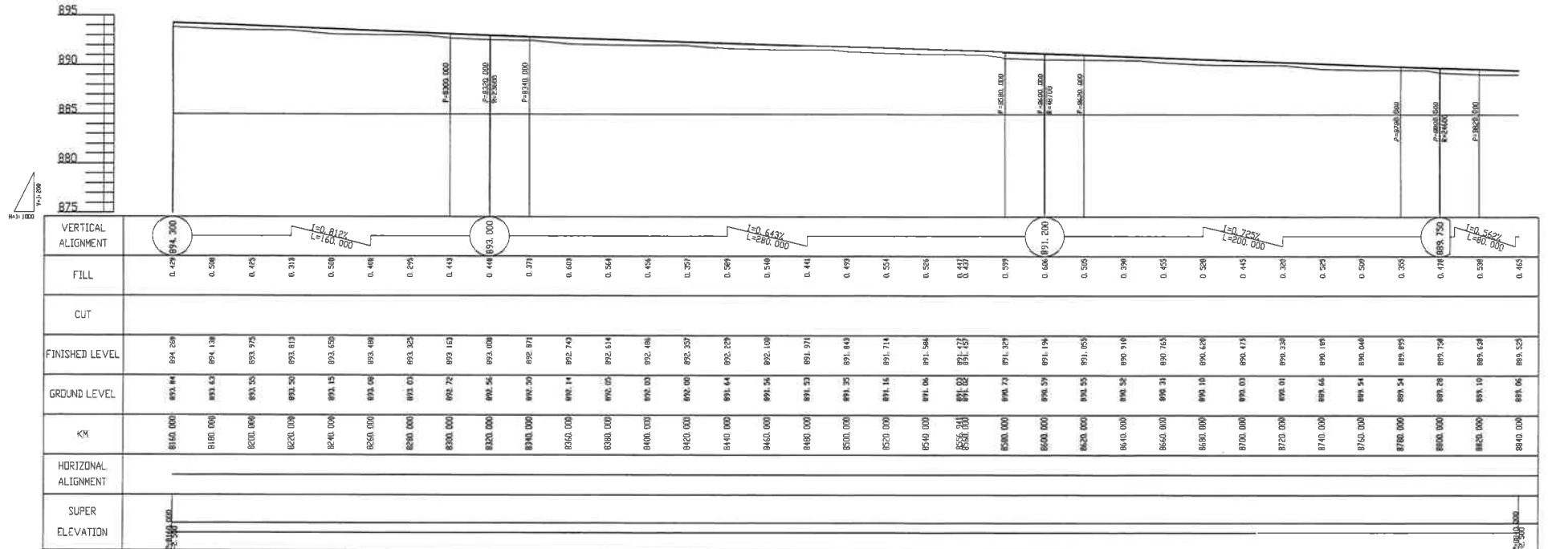
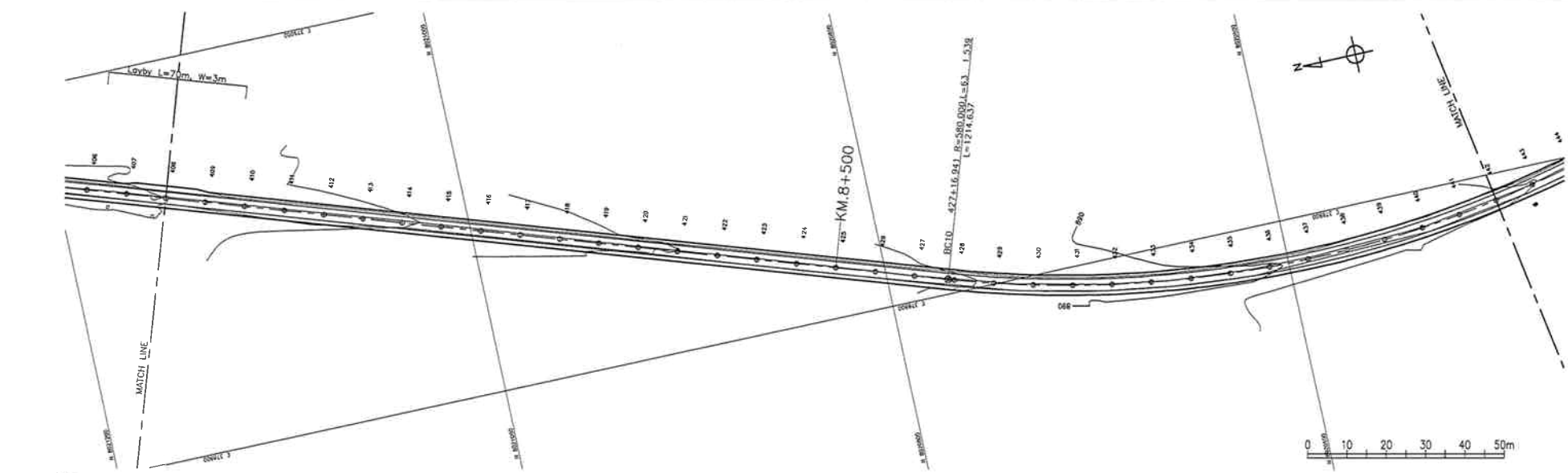


VERTICAL ALIGNMENT	FILL	CUT	FINISHED LEVEL	GROUND LEVEL	KM	HORIZONTAL ALIGNMENT	SUPER ELEVATION
	0.18		891.140	890.96	7480.000		
	0.50		891.125	890.54	7500.000		
	0.30		891.000	890.54	7520.000		
	0.34		891.000	890.71	7540.000		
	0.40		891.000	890.56	7560.000		
	0.415		890.985	890.57	7580.000		
	0.302		890.862	890.51	7600.000		
	0.433		890.553	890.07	7620.000		
	0.443		890.175	888.71	7640.000		
	0.458		889.788	888.33	7660.000		
	0.555		889.345	888.96	7680.000		
		0.789	889.292	890.24	7700.000		
		0.27	889.763	890.04	7720.000		
		0.125	889.975	890.10	7740.000		
	0.167		890.147	890.00	7760.000		
	0.208		890.258	890.00	7780.000		
	0.207		890.297	890.00	7800.000		
	0.240		890.190	890.30	7820.000		
	0.210		891.220	890.12	7840.000		
	0.200		891.370	891.22	7860.000		
	0.240		891.910	891.42	7880.000		
	0.242		892.252	891.74	7900.000		
	0.410		892.400	892.12	7920.000		
	0.410		892.250	892.34	7940.000		
	0.270		893.300	893.00	7960.000		
	0.400		893.050	893.25	7980.000		
	0.274		893.954	893.56	8000.000		
	0.207		894.447	893.64	8020.000		
	0.433		894.323	893.90	8040.000		
	0.458		894.448	893.99	8060.000		
	0.350		894.460	893.91	8080.000		
	0.340		894.420	893.84	8100.000		
	0.310		894.390	893.87	8120.000		
	0.450		894.310	893.87	8140.000		
	0.423		894.095	893.84	8160.000		

<ul style="list-style-type: none"> The Ministry of Local Government and Housing of The Republic of Zambia Japan International Cooperation Agency 	CONSULTANTS:	PROJECT NAME:	DRAWING TITLE:	Date: March 2008	DRAWING No.:
	Construction Project Consultants, INC. (CPC)	THE PROJECT FOR IMPROVEMENT OF LIVINGSTONE CITY ROADS	PLAN AND PROFILE (13/20) KM 7+480 - KM 8+160	Prepared by:	ZL BD D-13
				Checked by:	



- The Ministry of Local Government and Housing of The Republic of Zambia
- Japan International Cooperation Agency

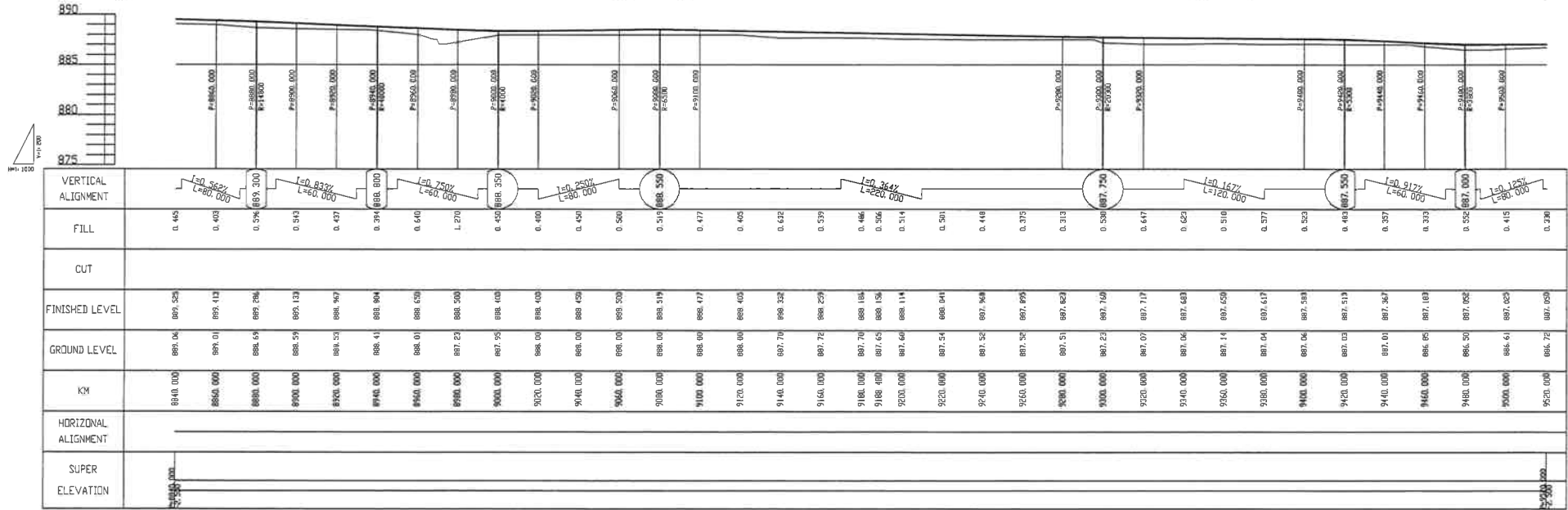
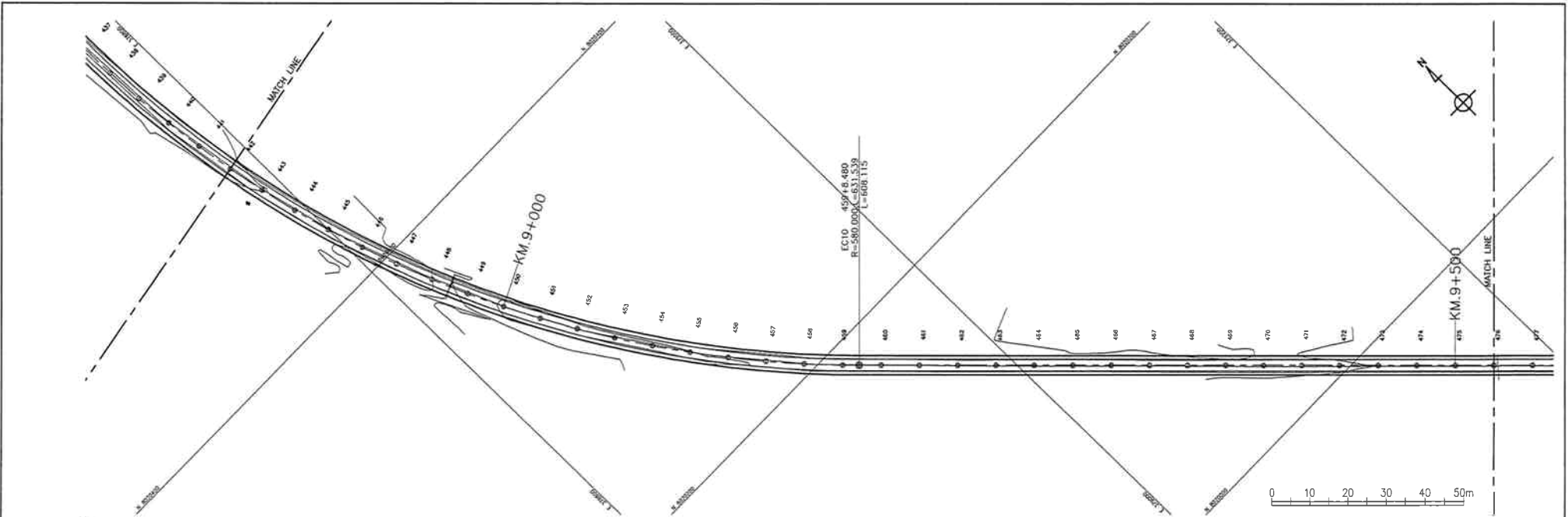
CONSULTANTS:
Construction Project Consultants, INC. (CPC)

PROJECT NAME:
THE PROJECT FOR IMPROVEMENT OF LIVINGSTONE CITY ROADS

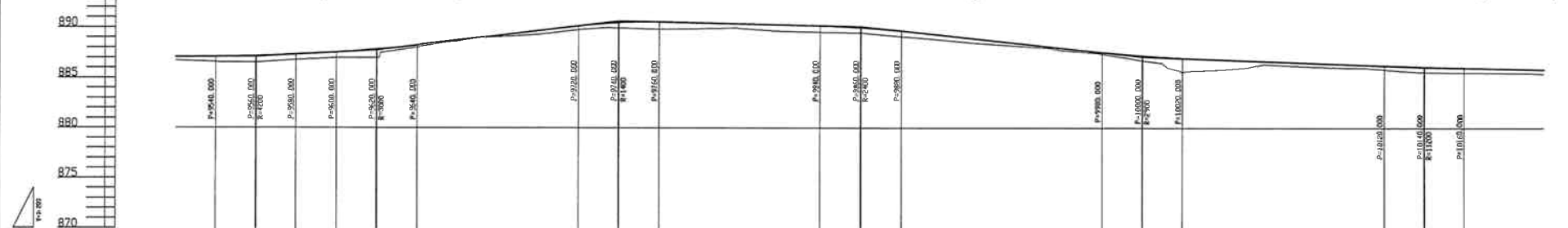
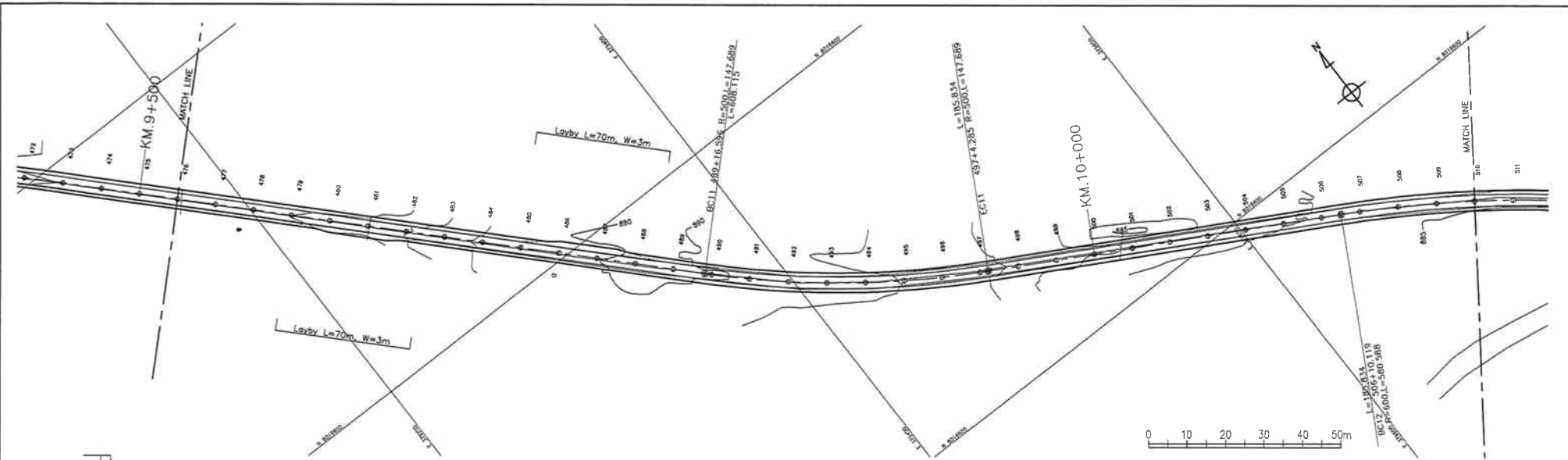
DRAWING TITLE:
PLAN AND PROFILE (14/20)
KM 8+160 - KM 8+840

Date: March 2008
Prepared by:
Checked by:

DRAWING No.:
ZL BD D-14

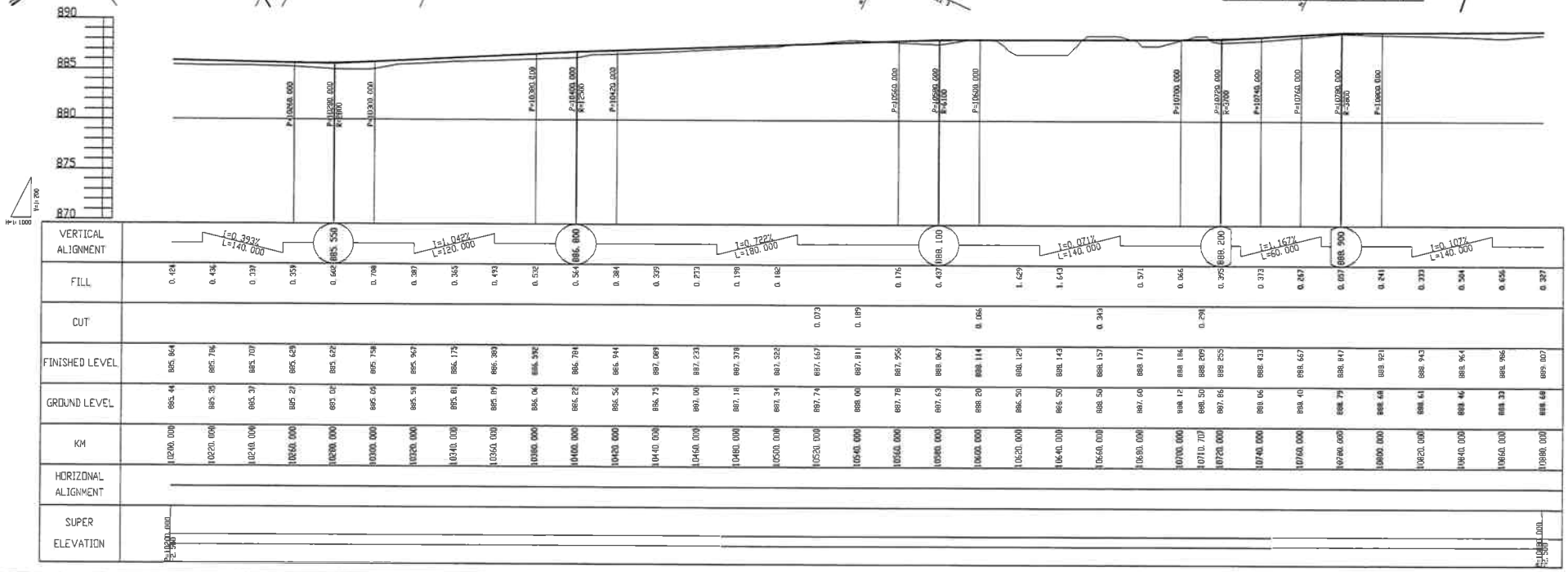
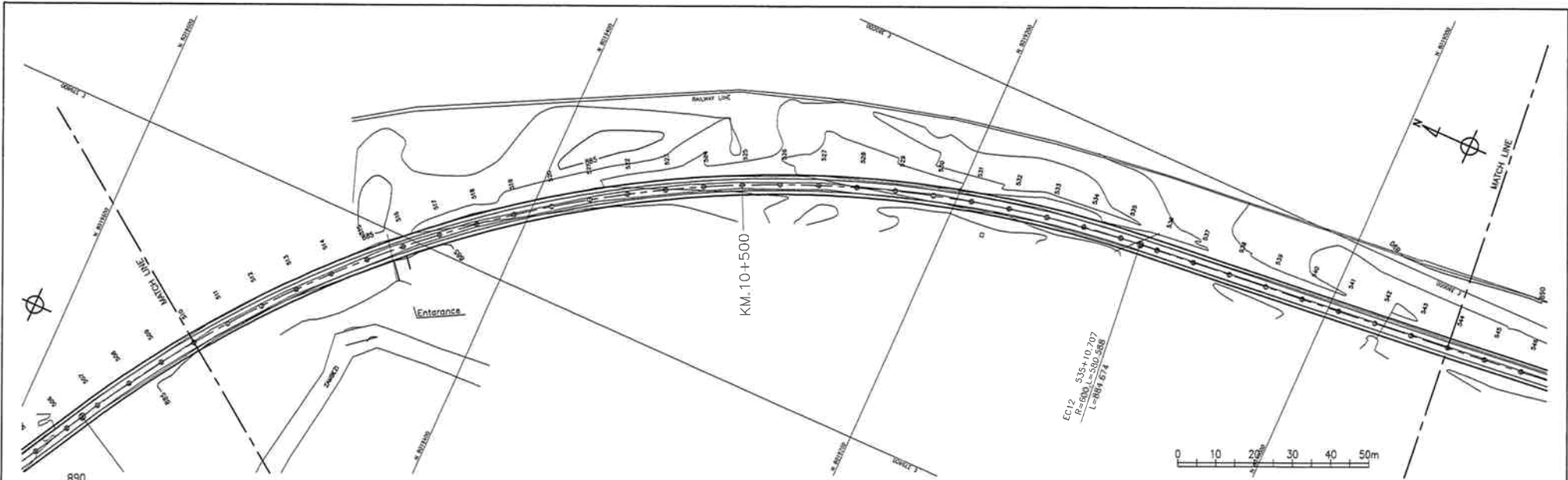


<ul style="list-style-type: none"> The Ministry of Local Government and Housing of The Republic of Zambia Japan International Cooperation Agency 	CONSULTANTS:	PROJECT NAME:	DRAWING TITLE:	Date: March 2008	DRAWING No.:
	Construction Project Consultants, INC. (CPC)	THE PROJECT FOR IMPROVEMENT OF LIVINGSTONE CITY ROADS	PLAN AND PROFILE (15/20) KM 8+840 - KM 9+520	Prepared by:	ZL BD D-15
				Checked by:	

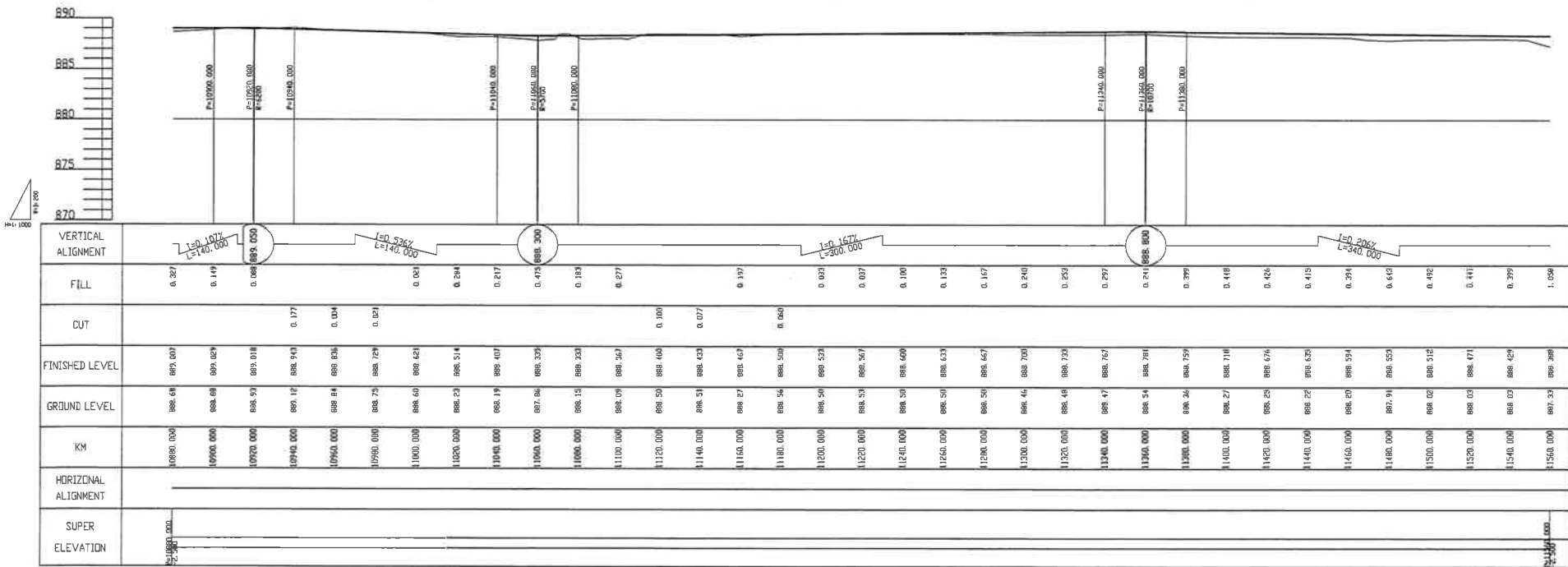
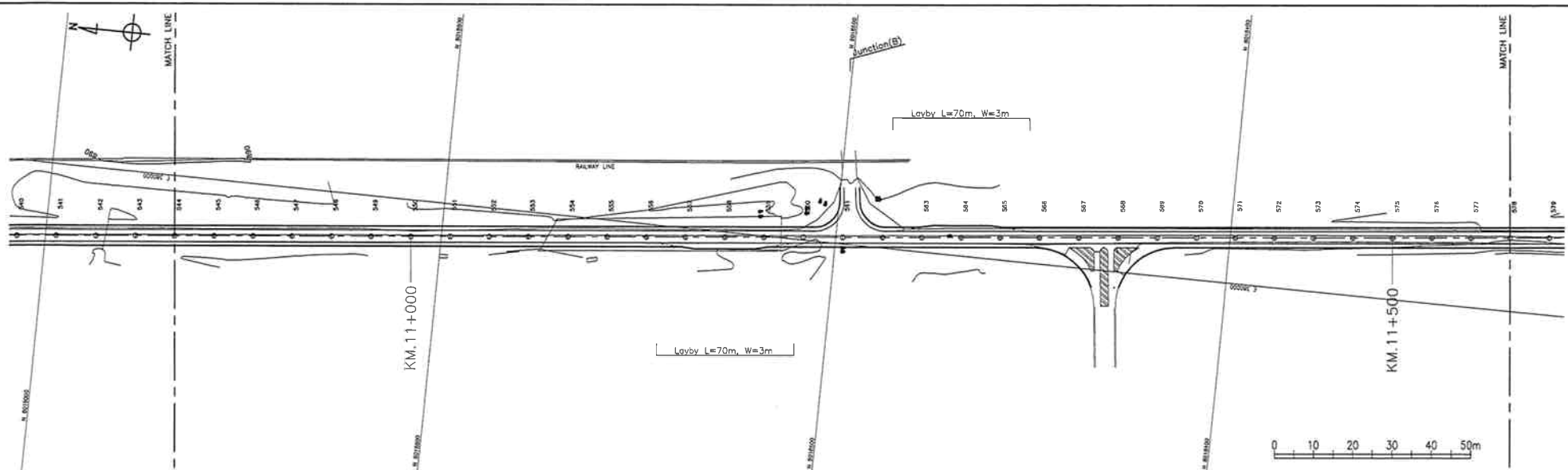


VERTICAL ALIGNMENT	FILL	CUT	FINISHED LEVEL	GROUND LEVEL	KM	HORIZONTAL ALIGNMENT	SUPER ELEVATION
$L=0.125\%$ $L=300.000$	0.396		887.020	886.72	9520.000		
	0.506		887.025	886.37	9540.000		
$L=1.093\%$ $L=240.000$	0.648		887.149	886.50	9560.000		
	0.827		887.317	886.70	9580.000		
	0.561		887.533	886.97	9600.000		
	0.827		887.817	886.90	9620.000		
	0.813		888.230	888.02	9640.000		
	0.137		888.717	888.54	9660.000		
	0.138		889.298	888.07	9680.000		
	0.263		889.661	889.21	9700.000		
	0.377		890.167	889.70	9720.000		
	0.334		890.306	889.95	9740.000		
	0.718		890.359	889.94	9760.000		
	0.377		890.467	889.80	9780.000		
	0.411		890.391	889.90	9800.000		
	0.623		890.374	889.94	9820.000		
	0.623		890.280	889.65	9840.000		
	0.616		890.192	889.55	9860.000		
	0.528		890.018	889.45	9880.000		
	0.559		889.670	889.11	9900.000		
	0.477		889.257	888.78	9920.000		
	0.296		888.654	888.45	9940.000		
	0.224		888.114	888.18	9960.000		
	0.204		888.524	888.12	9980.000		
	0.223		887.950	887.77	10000.000		
	0.191		887.571	887.38	10020.000		
	0.468		887.218	886.75	10040.000		
	1.380		887.000	885.62	10060.000		
	1.060		886.650	885.70	10080.000		
	0.320		886.700	886.38	10100.000		
	0.290		886.550	886.16	10120.000		
	0.350		886.000	886.05	10140.000		
	0.390		886.250	885.87	10160.000		
	0.479		886.170	885.68	10180.000		
	0.520		886.118	885.50	10200.000		
	0.461		886.021	885.56	10220.000		
	0.423		885.943	885.52	10240.000		
	0.424		885.864	885.44	10260.000		

<ul style="list-style-type: none"> The Ministry of Local Government and Housing of The Republic of Zambia Japan International Cooperation Agency 	CONSULTANTS:	PROJECT NAME:	DRAWING TITLE:	Date: March 2008	DRAWING No.:
	Construction Project Consultants, INC. (CPC)	THE PROJECT FOR IMPROVEMENT OF LIVINGSTONE CITY ROADS	PLAN AND PROFILE (16/20) KM 9+520 - KM 10+200	Prepared by:	ZL BD D-16
				Checked by:	



<ul style="list-style-type: none"> The Ministry of Local Government and Housing of The Republic of Zambia Japan International Cooperation Agency 	CONSULTANTS:	PROJECT NAME:	DRAWING TITLE:	Date: March 2008	DRAWING No.:
	Construction Project Consultants, INC. (CPC)	THE PROJECT FOR IMPROVEMENT OF LIVINGSTONE CITY ROADS	PLAN AND PROFILE (17/20) KM 10+200 - KM 10+880	Prepared by:	ZL BD D-17
				Checked by:	



- The Ministry of Local Government and Housing of The Republic of Zambia
- Japan International Cooperation Agency

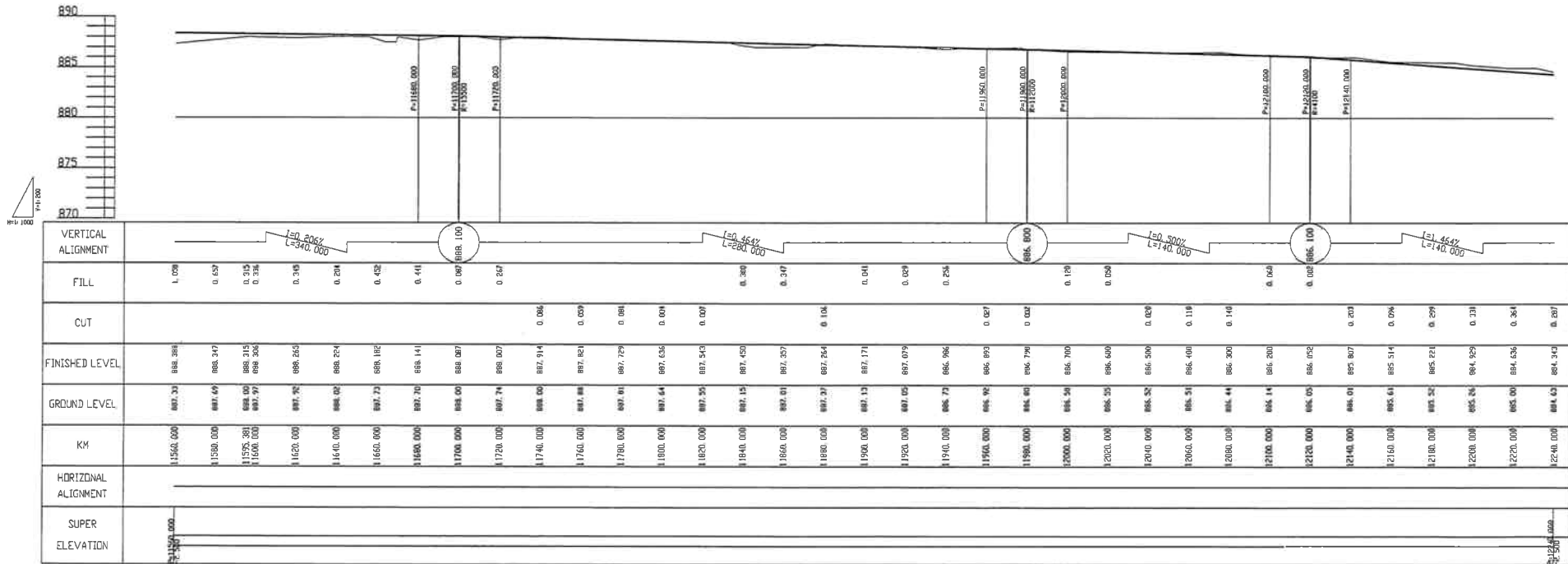
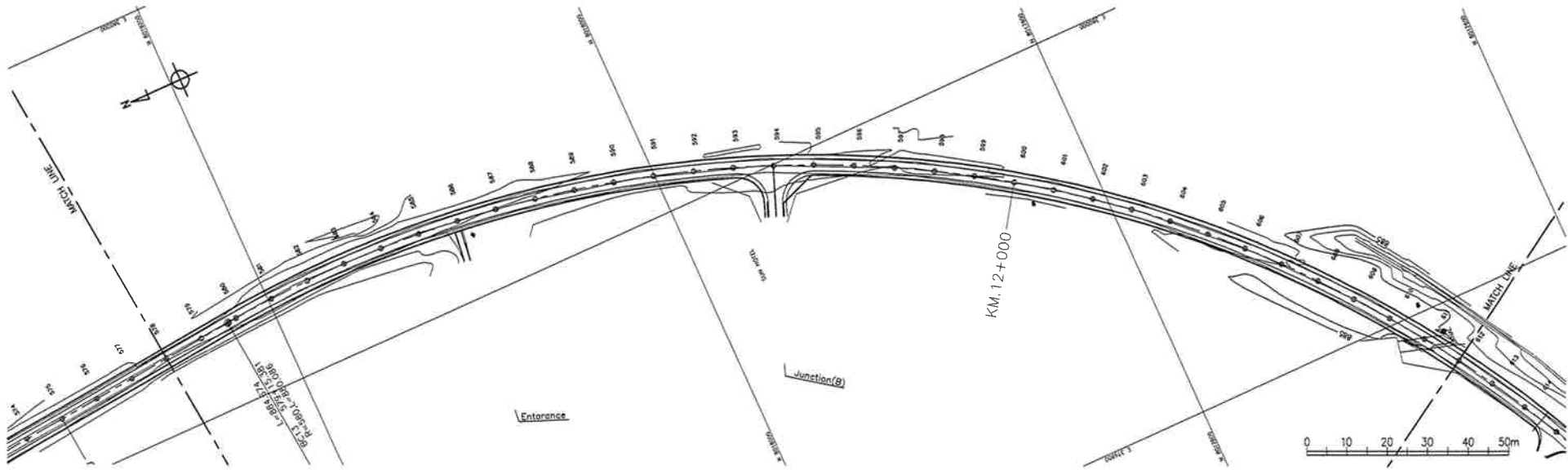
CONSULTANTS:
Construction Project Consultants, INC. (CPC)

PROJECT NAME:
THE PROJECT FOR IMPROVEMENT OF LIVINGSTONE CITY ROADS

DRAWING TITLE:
PLAN AND PROFILE (18/20)
KM 10+880 - KM 11+560

Date: March 2008
Prepared by:
Checked by:

DRAWING No.:
ZL BD D-18



- The Ministry of Local Government and Housing of The Republic of Zambia
- Japan International Cooperation Agency

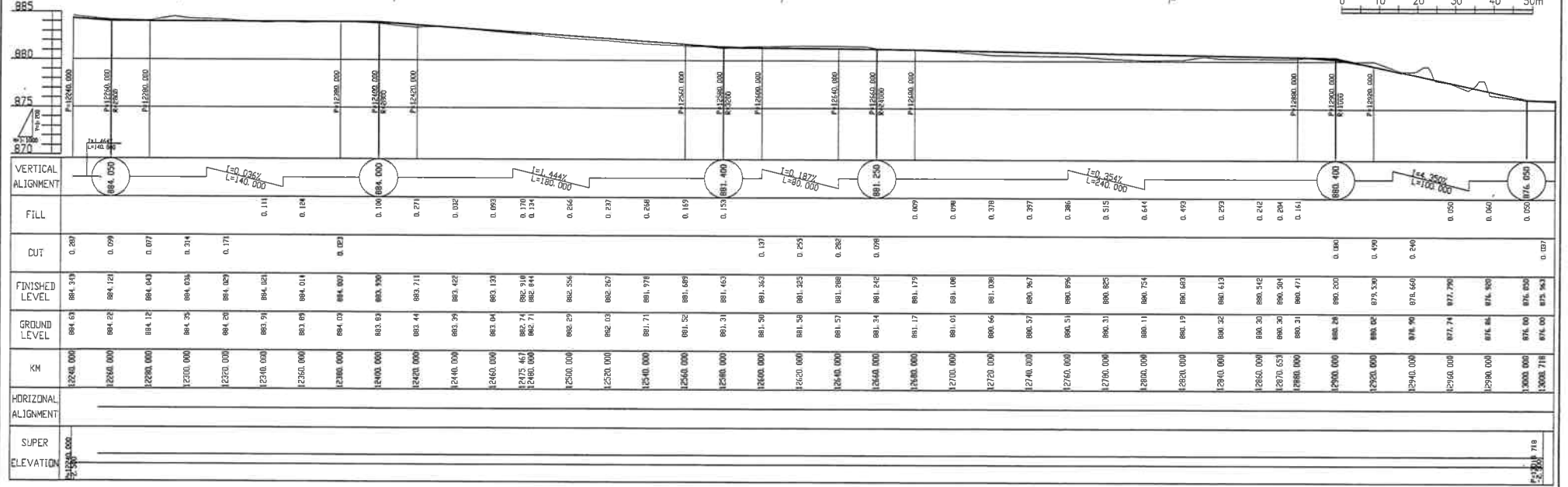
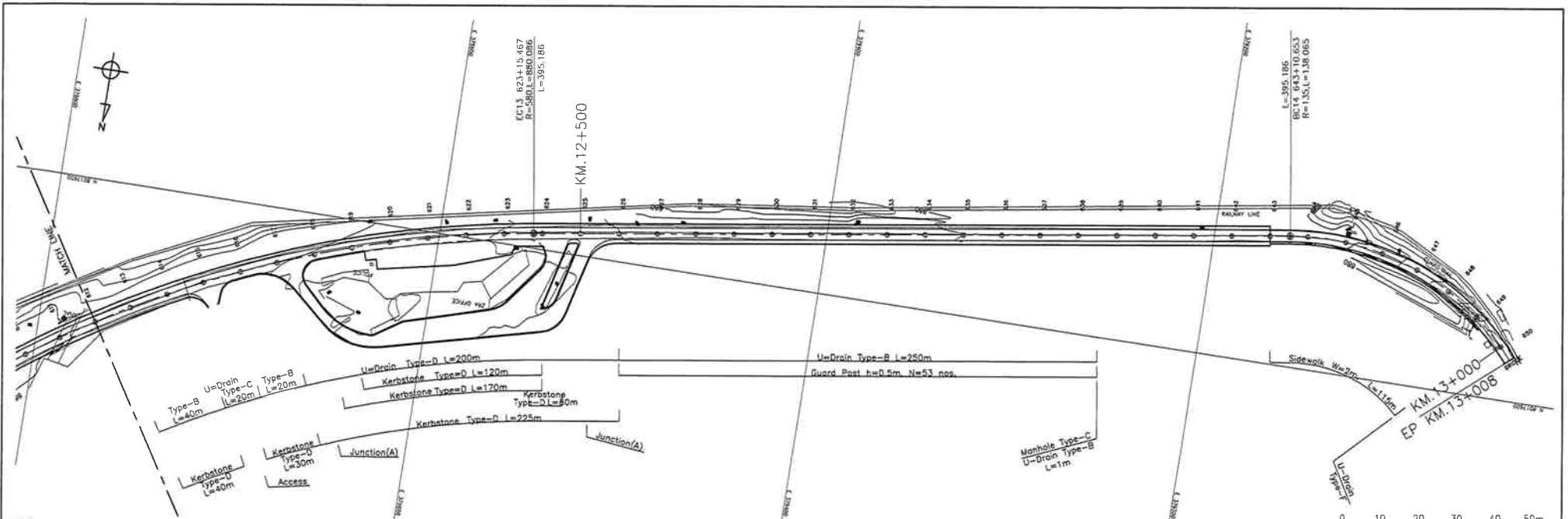
CONSULTANTS:
Construction Project Consultants, INC. (CPC)

PROJECT NAME:
THE PROJECT FOR IMPROVEMENT OF LIVINGSTONE CITY ROADS

DRAWING TITLE:
PLAN AND PROFILE (19/20)
KM 11+560 - KM 12+240

Date: March 2008
Prepared by:
Checked by:

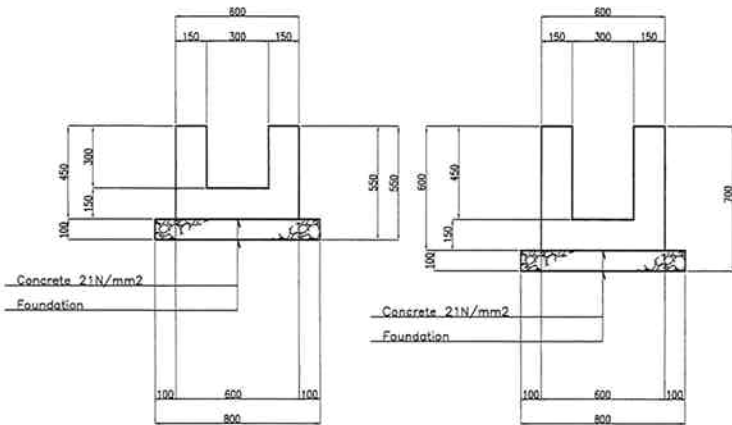
DRAWING No.:
ZL BD D-19



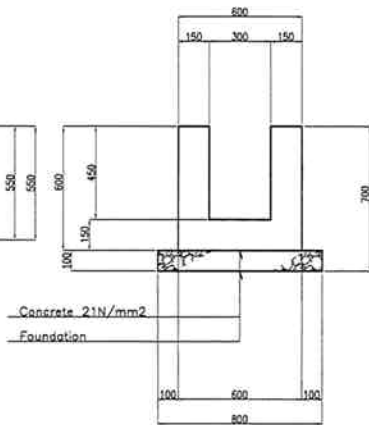
<ul style="list-style-type: none"> The Ministry of Local Government and Housing of The Republic of Zambia Japan International Cooperation Agency 	CONSULTANTS:	PROJECT NAME:	DRAWING TITLE:	Date: March 2008	DRAWING No.:
	Construction Project Consultants, INC. (CPC)	THE PROJECT FOR IMPROVEMENT OF LIVINGSTONE CITY ROADS	PLAN AND PROFILE (20/20) KM 12+240 - KM 13+008	Prepared by:	ZL BD D-20
				Checked by:	

U-DRAIN

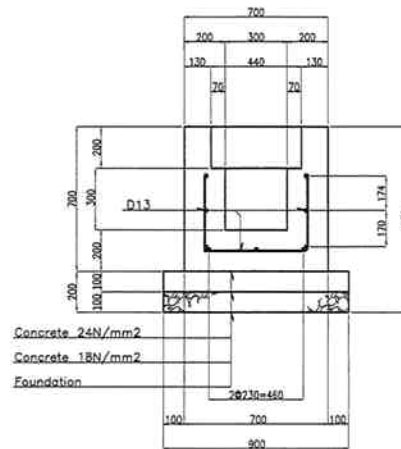
U-DRAIN
TYPE-A
SCALE B



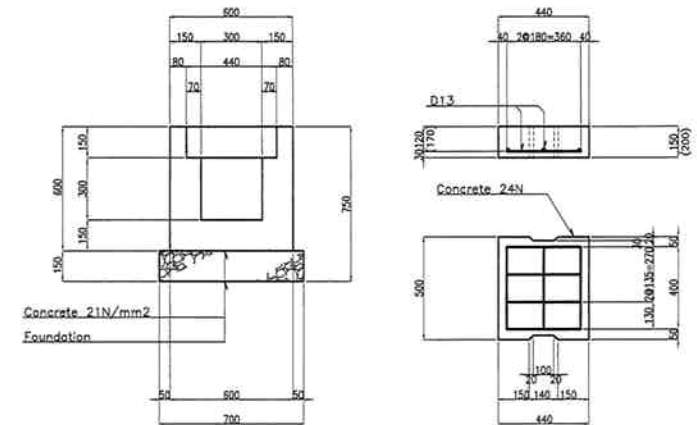
U-DRAIN
TYPE-B
SCALE B



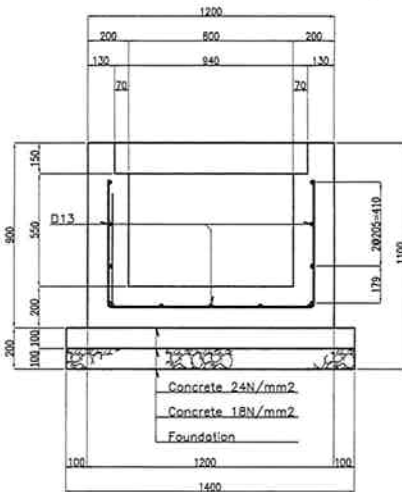
U-DRAIN
TYPE-D
SCALE B



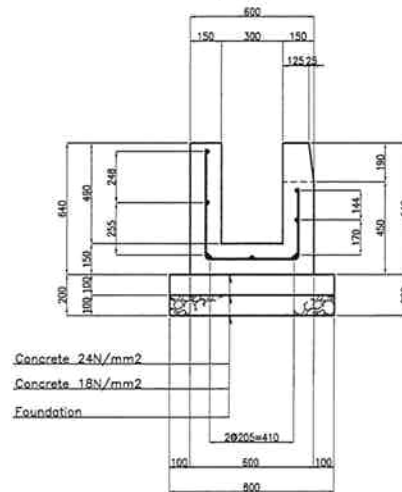
U-DRAIN
TYPE-C
SCALE B



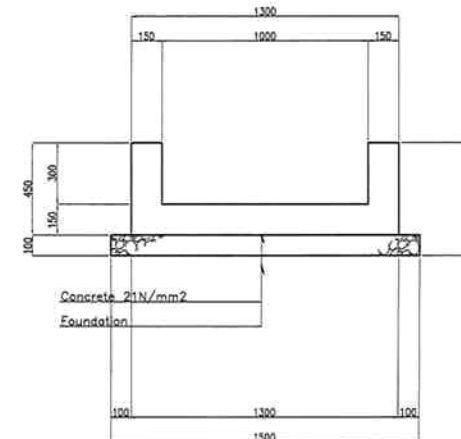
U-DRAIN
TYPE-F
SCALE B



U-DRAIN
TYPE-E
SCALE B



U-DRAIN
TYPE-G
SCALE B



SCALE B 0 1m

Note: Dimensions with () for Heavy Load use.

- The Ministry of Local Government and Housing of The Republic of Zambia
- Japan International Cooperation Agency

CONSULTANTS:
Construction Project Consultants, INC. (CPC)

PROJECT NAME:
THE PROJECT FOR IMPROVEMENT OF LIVINGSTONE CITY ROADS

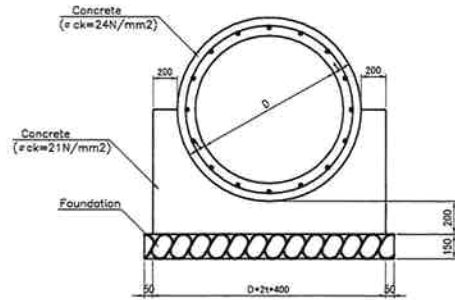
DRAWING TITLE:
DRAINAGE U-DRAIN

Date: March 2008
Prepared by:
Checked by:

DRAWING No.:
ZL BD E-1

REINFORCED CONCRETE PIPE

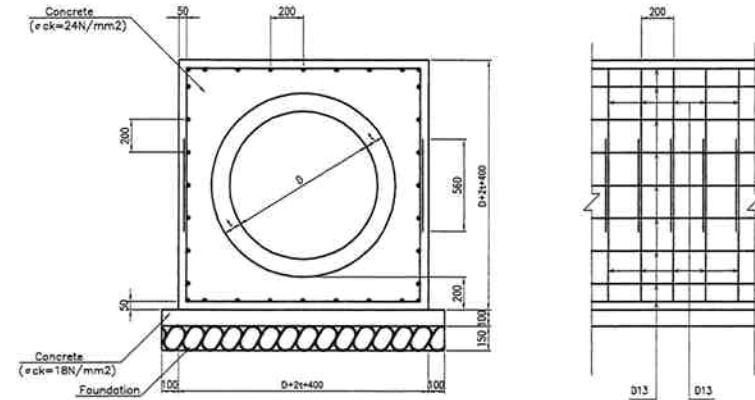
180° ENCASEMENT TYPE



DIMENSION LIST

TYPE	D
D450	450
D600	600
D900	900
D1000	1,000

360° ENCASEMENT TYPE



DIMENSION LIST

TYPE	D
D450	450
D600	600
D900	900
D1000	1,000

SCALE 0 0.5 1m

- The Ministry of Local Government and Housing of The Republic of Zambia
- Japan International Cooperation Agency

CONSULTANTS:
Construction Project Consultants, INC. (CPC)

PROJECT NAME:
THE PROJECT FOR IMPROVEMENT OF LIVINGSTONE CITY ROADS

DRAWING TITLE:
DRAINAGE REINFORCED CONCRETE PIPE

Date: March 2008
Prepared by:
Checked by:

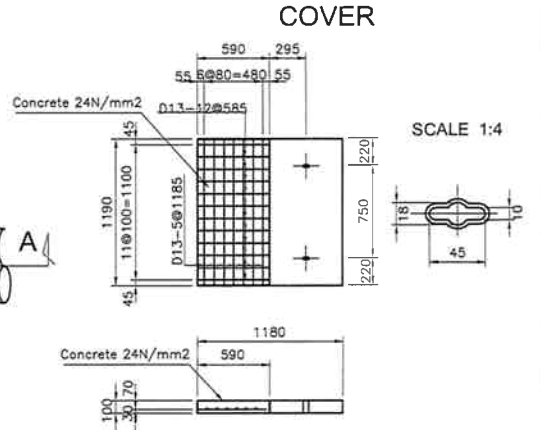
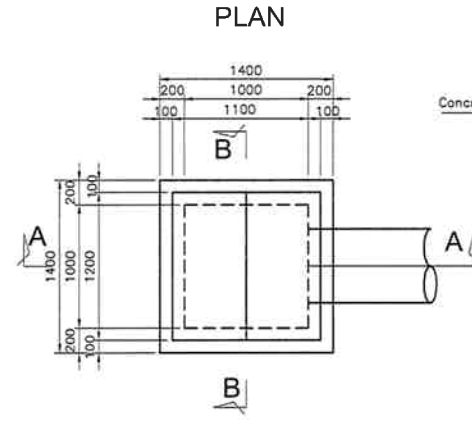
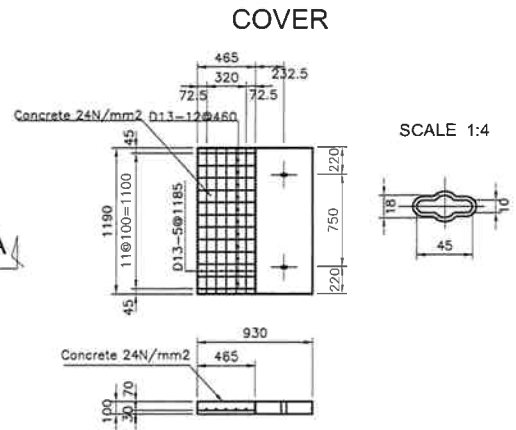
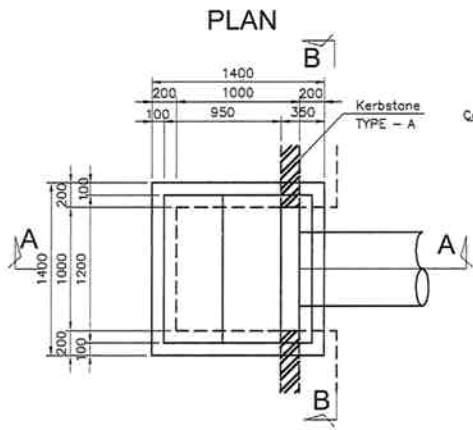
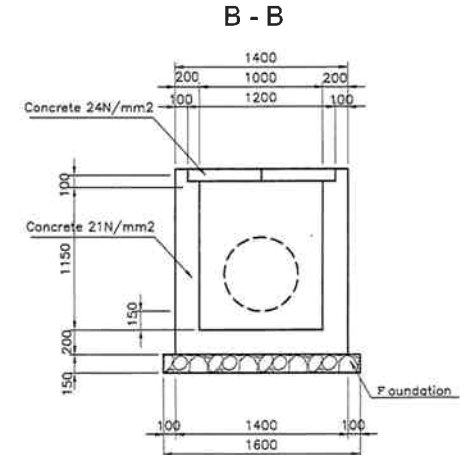
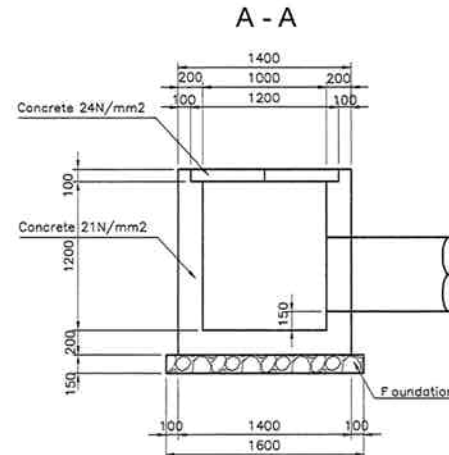
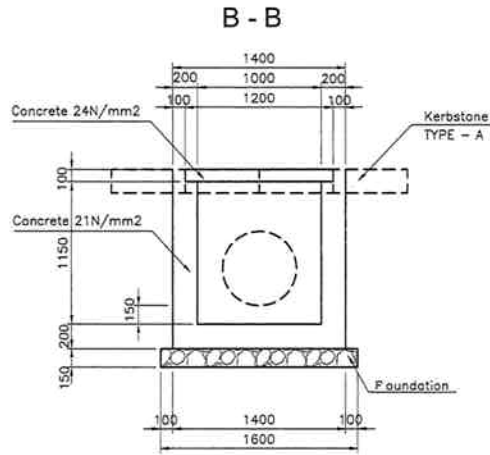
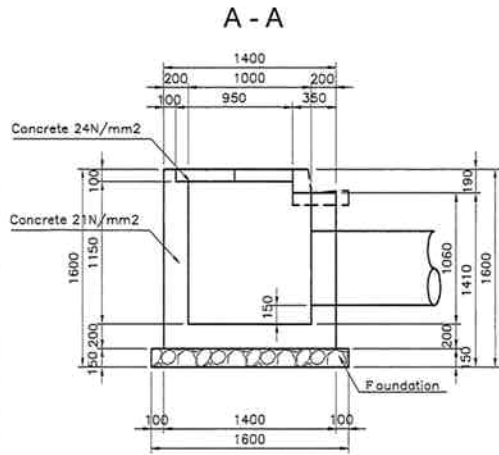
DRAWING No.:
ZL BD E-2

CATCH PIT

TYPE - A

SCALE 1:40

TYPE - B



- The Ministry of Local Government and Housing of The Republic of Zambia
- Japan International Cooperation Agency

CONSULTANTS:
Construction Project Consultants, INC. (CPC)

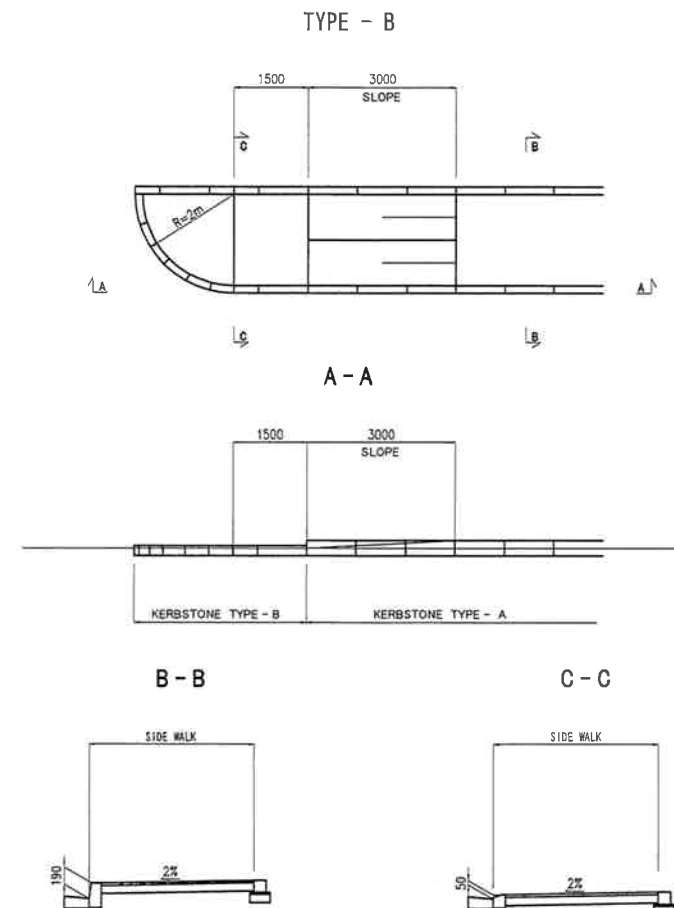
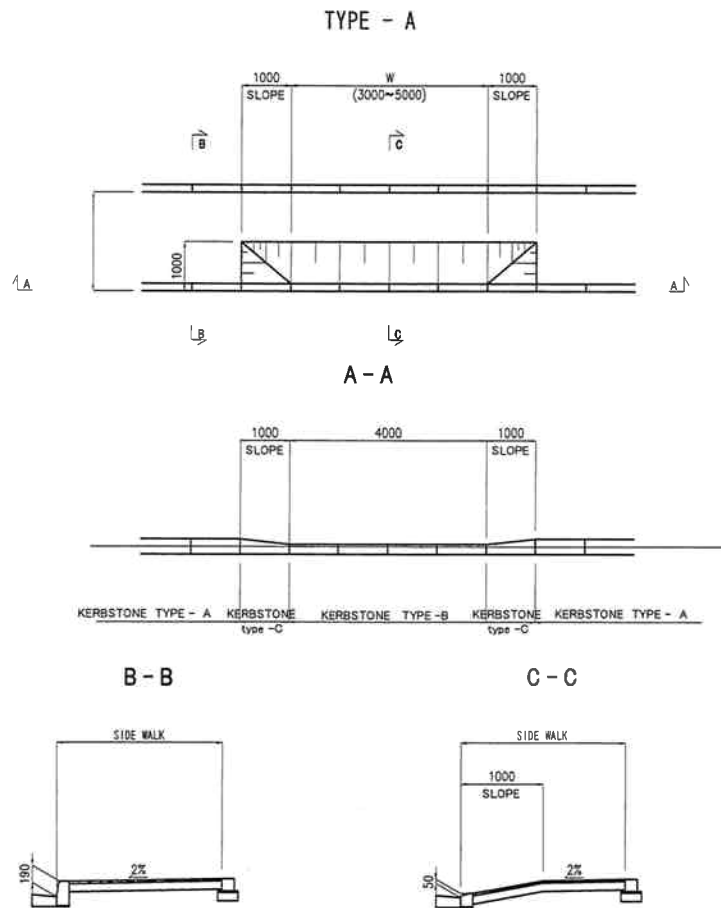
PROJECT NAME:
THE PROJECT FOR IMPROVEMENT OF LIVINGSTONE CITY ROADS

DRAWING TITLE:
DRAINAGE CATCH PIT

Date: March 2008
Prepared by:
Checked by:

DRAWING No.:
ZL BD E-3

WALKWAY ACCESS

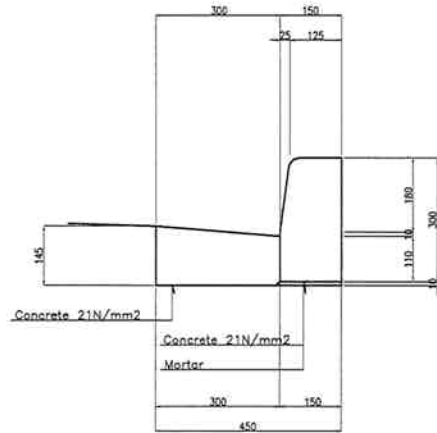


1:100 SCALE 0 1 2m
 1:60 SCALE 0 1 2m

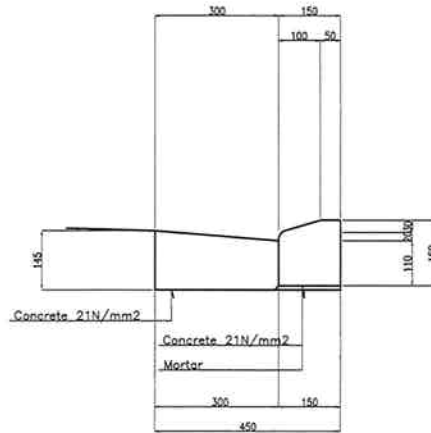
<ul style="list-style-type: none"> ● The Ministry of Local Government and Housing of The Republic of Zambia ● Japan International Cooperation Agency 	CONSULTANTS:	PROJECT NAME:	DRAWING TITLE:	Date: March 2008	DRAWING No.:
	Construction Project Consultants, INC. (CPC)	THE PROJECT FOR IMPROVEMENT OF LIVINGSTONE CITY ROADS	INCIDENTAL WORKS-1 WALKWAY ACCESS	Prepared by:	Checked by:

KERBSTONE

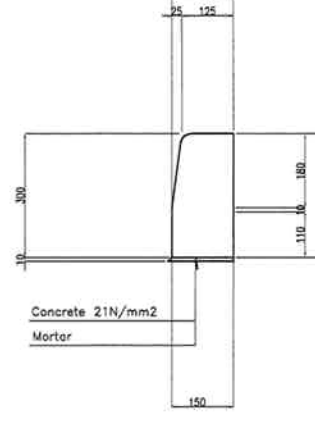
**KERBSTONE
TYPE-A**



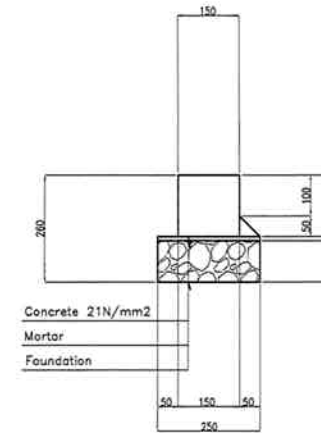
**KERBSTONE
TYPE-B**



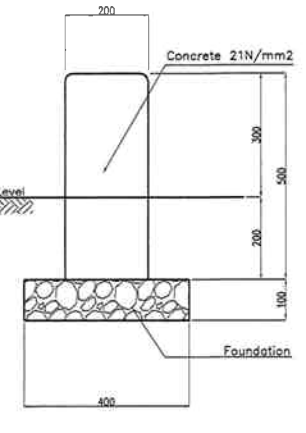
**KERBSTONE
TYPE-C**



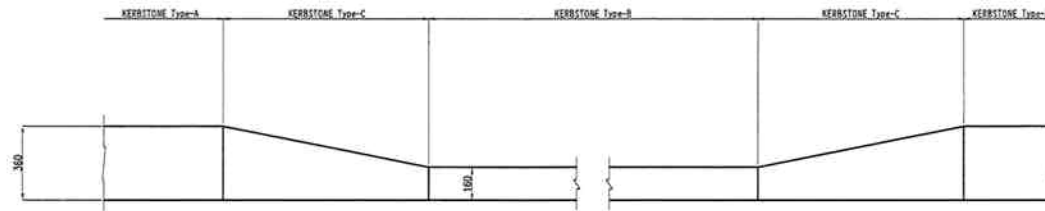
**KERBSTONE
TYPE-E**



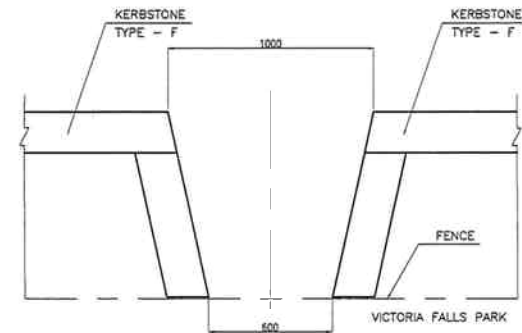
**KERBSTONE
TYPE-F**



**KERBSTONE
TYPE-C**



**PLAN
TYPE-F**



SCALE A 0.5m

- The Ministry of Local Government and Housing of The Republic of Zambia
- Japan International Cooperation Agency

CONSULTANTS:
Construction Project Consultants, INC. (CPC)

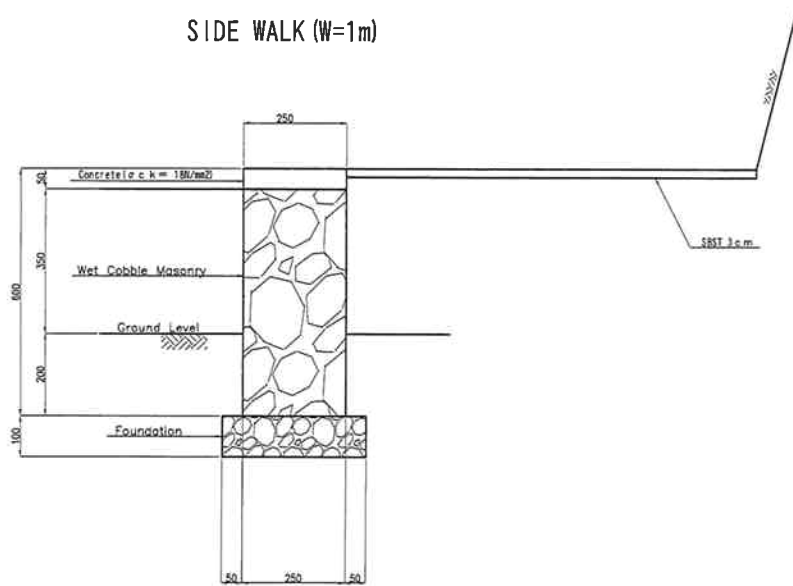
PROJECT NAME:
THE PROJECT FOR IMPROVEMENT OF LIVINGSTONE CITY ROADS

DRAWING TITLE:
INCIDENTAL WORKS-2 KERBSTONE

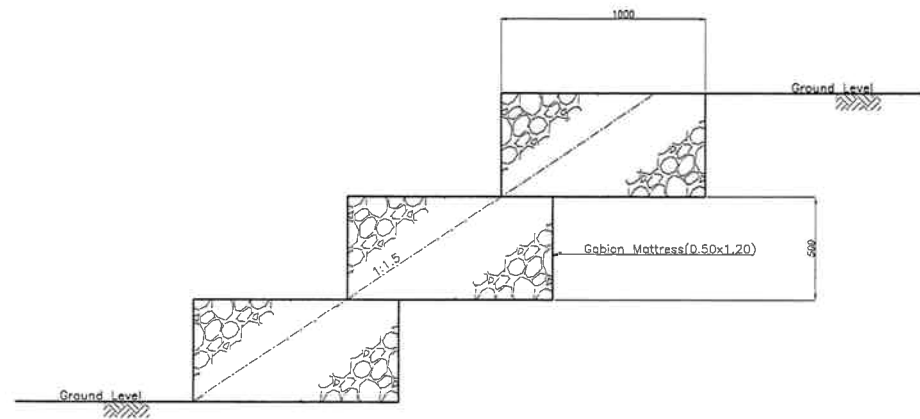
Date: March 2008
Prepared by:
Checked by:

DRAWING No.:
ZL BD F-2

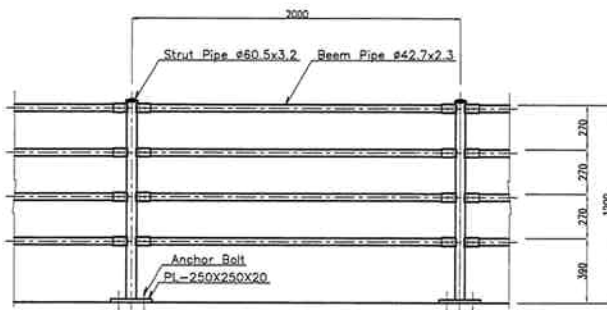
SIDE WALK (W=1m)



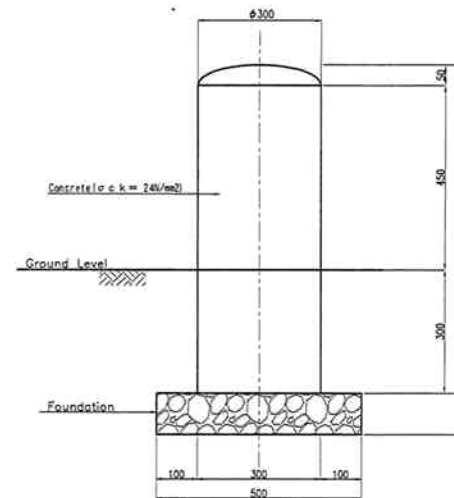
MAT GABIONS



GUARD FENCE (BRIDGE)



GUARD POST



- The Ministry of Local Government and Housing of The Republic of Zambia
- Japan International Cooperation Agency

CONSULTANTS:
Construction Project Consultants, INC. (CPC)

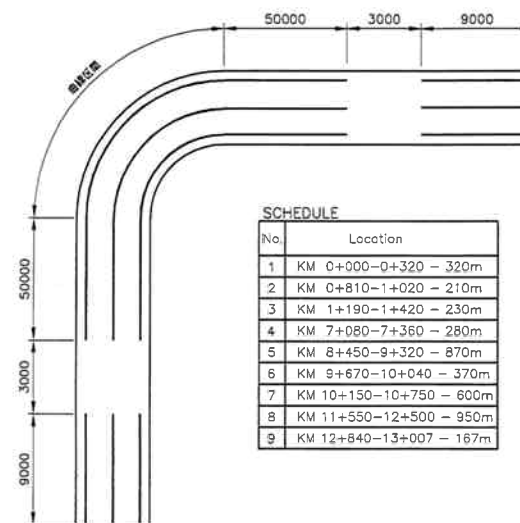
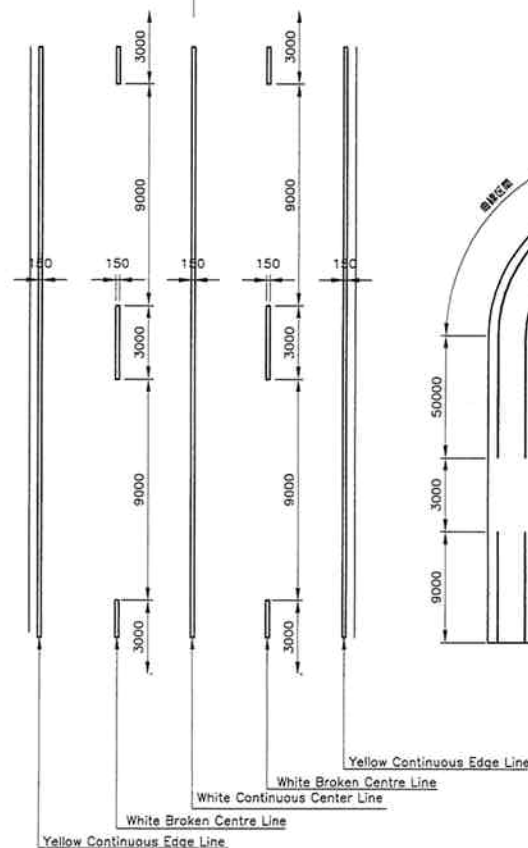
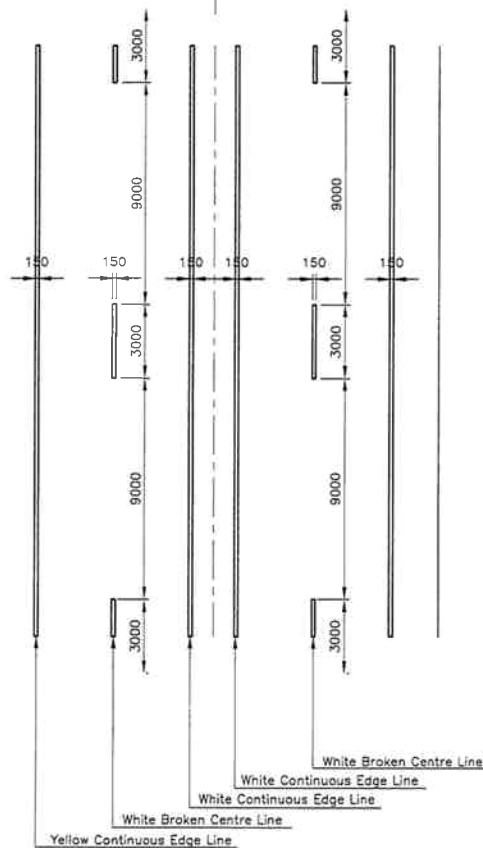
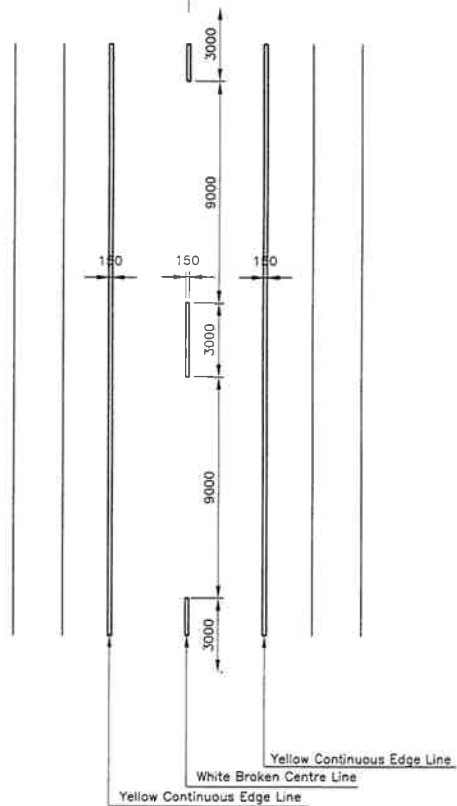
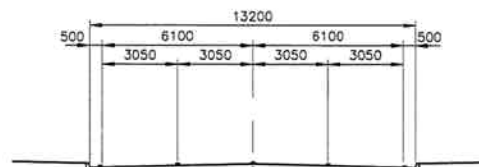
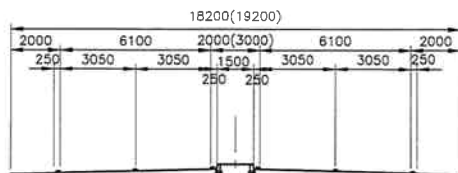
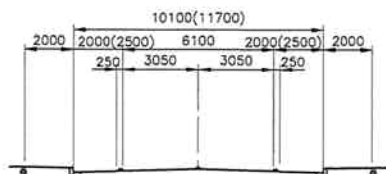
PROJECT NAME:
THE PROJECT FOR IMPROVEMENT OF LIVINGSTONE CITY ROADS

DRAWING TITLE:
INCIDENTAL WORKS-3 STRUCTURES

Date: March 2008
Prepared by:
Checked by:

DRAWING No.:
ZL BD F-3

ROAD MARKING



SCHEDULE

No.	Location
1	KM 0+000-0+320 - 320m
2	KM 0+810-1+020 - 210m
3	KM 1+190-1+420 - 230m
4	KM 7+080-7+360 - 280m
5	KM 8+450-9+320 - 870m
6	KM 9+670-10+040 - 370m
7	KM 10+150-10+750 - 600m
8	KM 11+550-12+500 - 950m
9	KM 12+840-13+007 - 167m

- The Ministry of Local Government and Housing of The Republic of Zambia
- Japan International Cooperation Agency

CONSULTANTS:

Construction Project Consultants, INC. (CPC)

PROJECT NAME:

THE PROJECT FOR IMPROVEMENT OF LIVINGSTONE CITY ROADS

DRAWING TITLE:

INCIDENTAL WORKS-4 ROAD MARKING

Date: March 2008

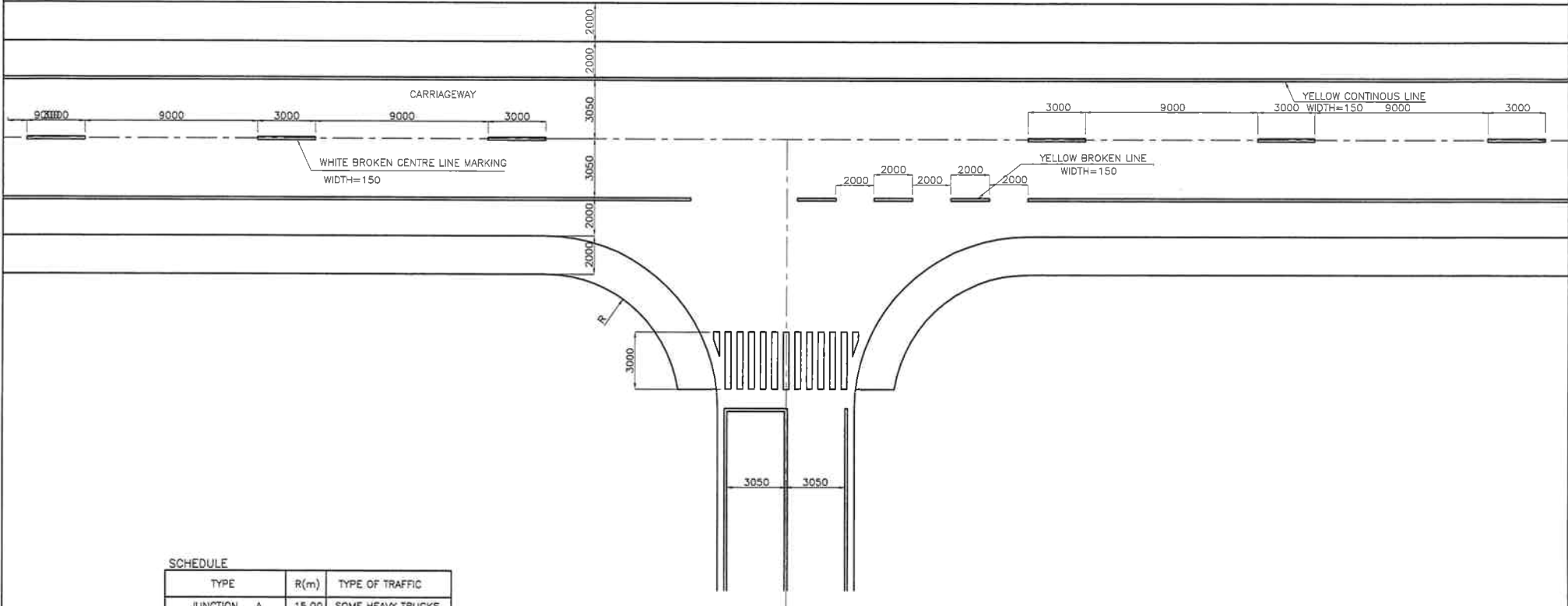
Prepared by:

Checked by:

DRAWING No.:

ZL BD F-4

JUNCTION LAYOUT AND ROAD MARKING



SCHEDULE

TYPE	R(m)	TYPE OF TRAFFIC
JUNCTION A	15.00	SOME HEAVY TRUCKS
JUNCTION B	8.00	SOME SMALL TRUCKS
JUNCTION C	6.00	LIGHT GOODS
ACCESS	4.00	PASSENGER CARS

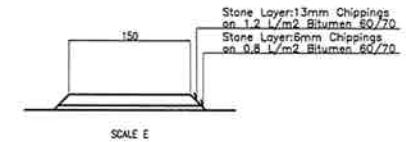
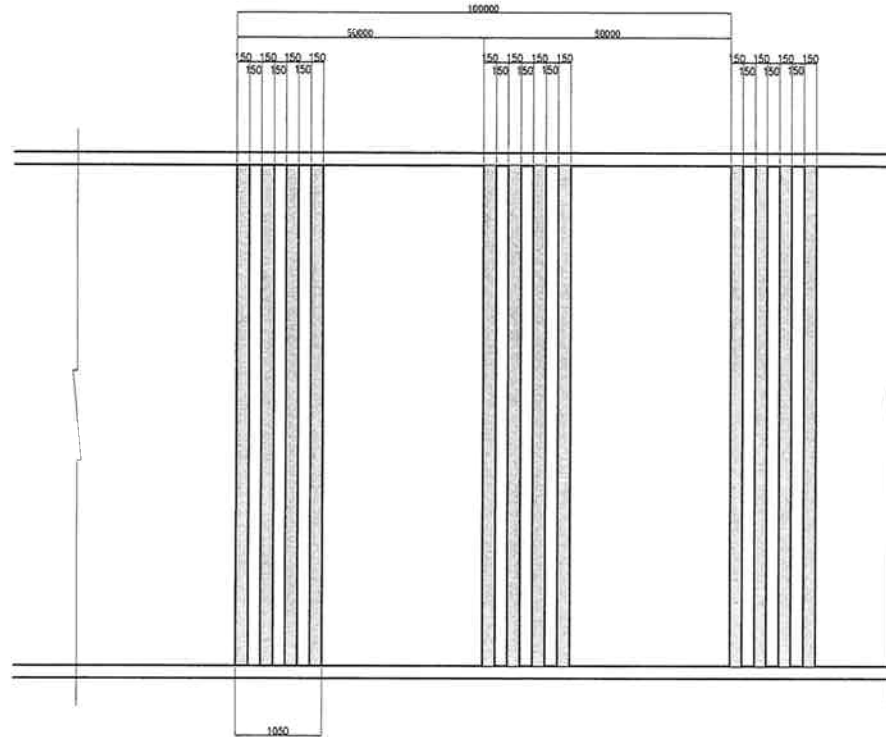
NOTE
 1. ALL DIMENSIONS IN MILLIMETERS UNLESS OTHERWISE INDICATED
 2. LOCATION OF WALKWAY DIFFERS FOR ROAD

<ul style="list-style-type: none"> The Ministry of Local Government and Housing of The Republic of Zambia Japan International Cooperation Agency 	CONSULTANTS:	PROJECT NAME:	DRAWING TITLE:	Date: March 2008	DRAWING No.:
	Construction Project Consultants, INC. (CPC)	THE PROJECT FOR IMPROVEMENT OF LIVINGSTONE CITY ROADS	INCIDENTAL WORKS-5 JUNCTION LAYOUT AND ROAD MARKING	Prepared by:	ZL BD F-5
			Checked by:		

HUMP

RUMBLE STRIP HUMP

SCALE D



SCHEDULE

No.	Location
1	KM 0+280 - 100m
2	KM 0+800 - 100m
3	KM 1+370 - 100m
4	KM 3+200 - 100m
5	KM 3+330 - 100m
6	KM 5+000 - 100m



- The Ministry of Local Government and Housing of The Republic of Zambia
- Japan International Cooperation Agency

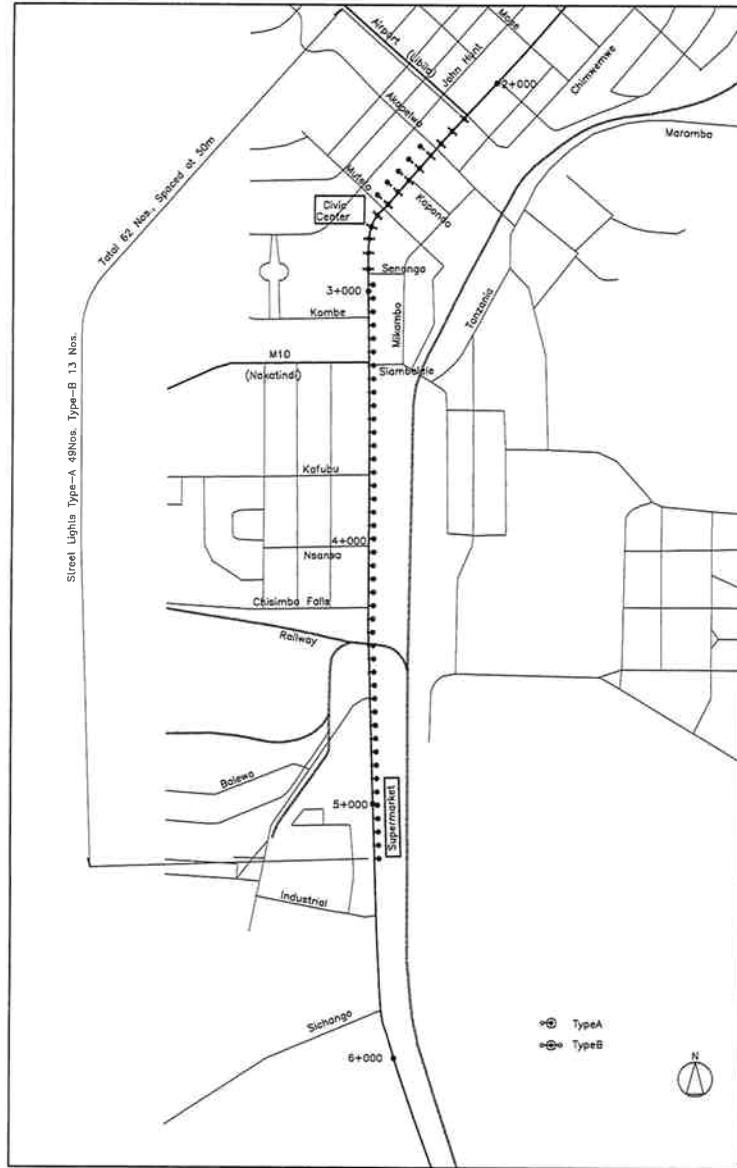
CONSULTANTS:
 Construction Project Consultants, INC. (CPC)

PROJECT NAME:
 THE PROJECT FOR IMPROVEMENT OF LIVINGSTONE CITY ROADS

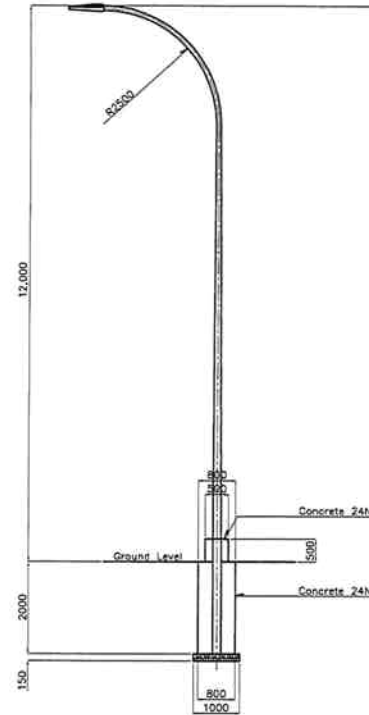
DRAWING TITLE:
 INCIDENTAL WORKS-6 HUMP

Date: March 2008
 Prepared by:
 Checked by:

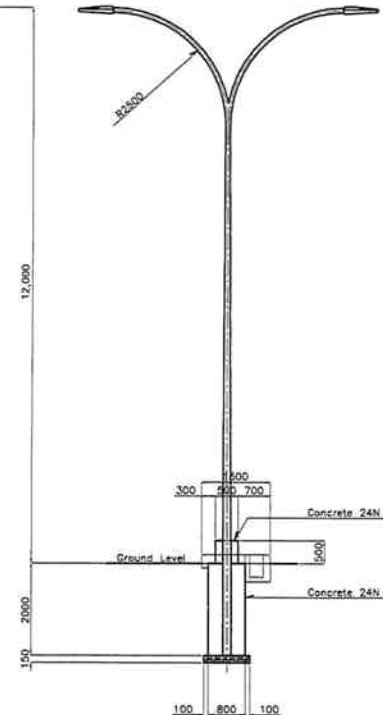
DRAWING No.:
 ZL BD F-6



LAYOUT
NON SCALE



STREET LIGHT
Type A
SCALE A



STREET LIGHT
Type B
SCALE A

- The Ministry of Local Government and Housing of The Republic of Zambia
- Japan International Cooperation Agency

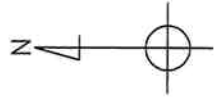
CONSULTANTS:
Construction Project Consultants, INC. (CPC)

PROJECT NAME:
THE PROJECT FOR IMPROVEMENT OF LIVINGSTONE CITY ROADS

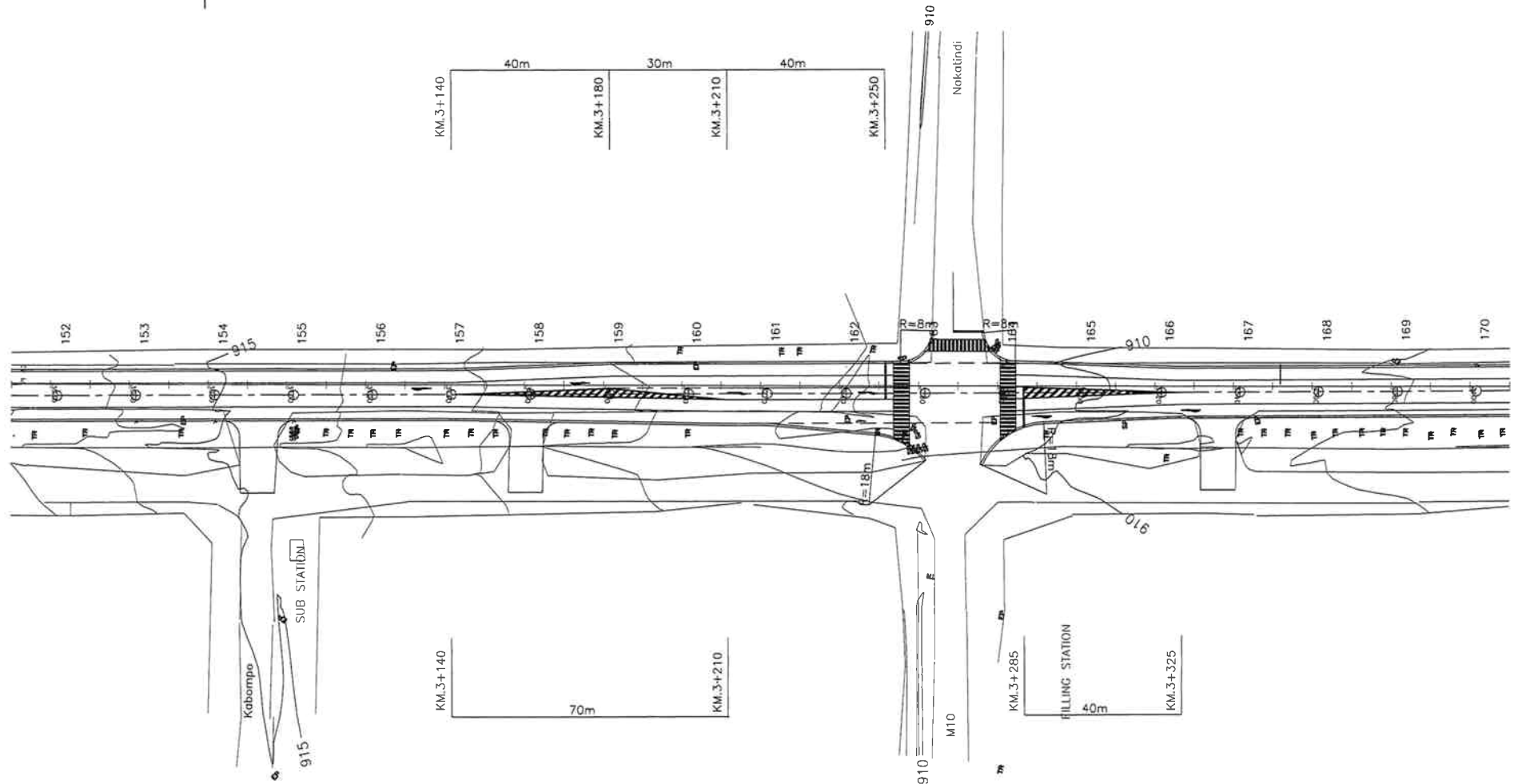
DRAWING TITLE:
INCIDENTAL WORKS-7 STREET LIGHT

Date: March 2008
Prepared by:
Checked by:

DRAWING No.:
ZL BD F-7



MAJOR JUNCTION DETAIL (M10 JUNCTION)



<ul style="list-style-type: none"> The Ministry of Local Government and Housing of The Republic of Zambia Japan International Cooperation Agency 	CONSULTANTS:	PROJECT NAME:	DRAWING TITLE:	Date: March 2008	DRAWING No.:
	Construction Project Consultants, INC. (CPC)	THE PROJECT FOR IMPROVEMENT OF LIVINGSTONE CITY ROADS	MAJOR JUNCTION DETAIL M10 JUNCTION	Prepared by:	ZL BD G-1
			Checked by:		