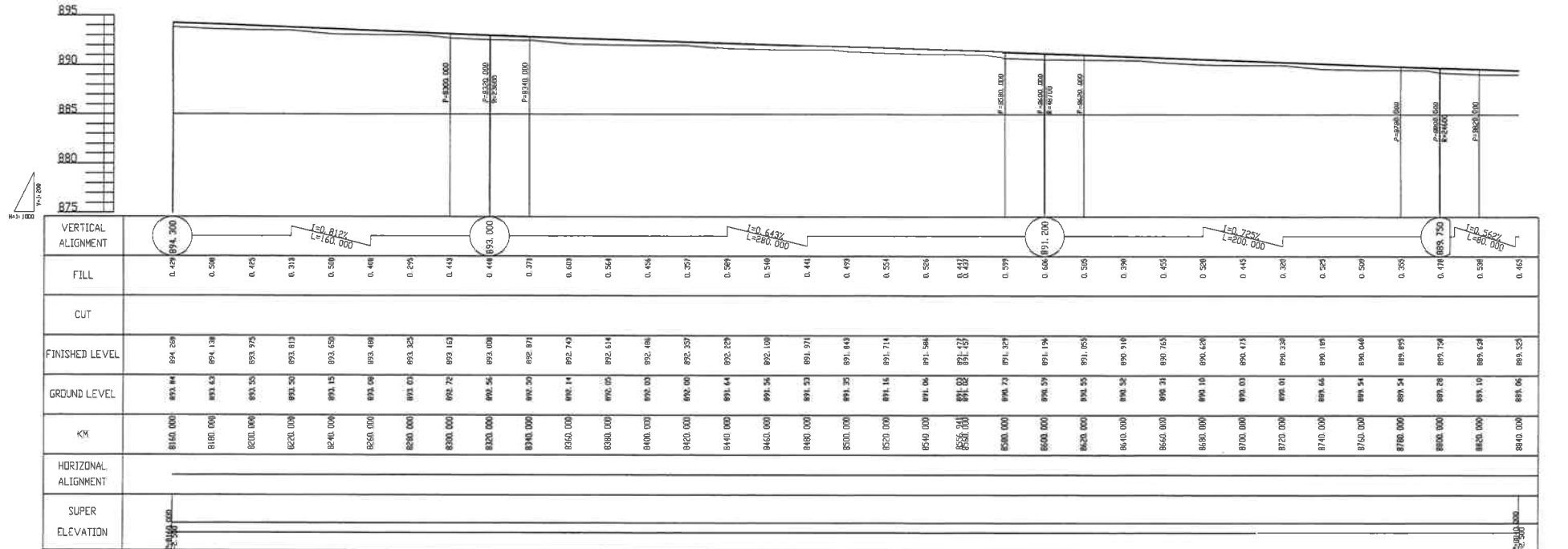
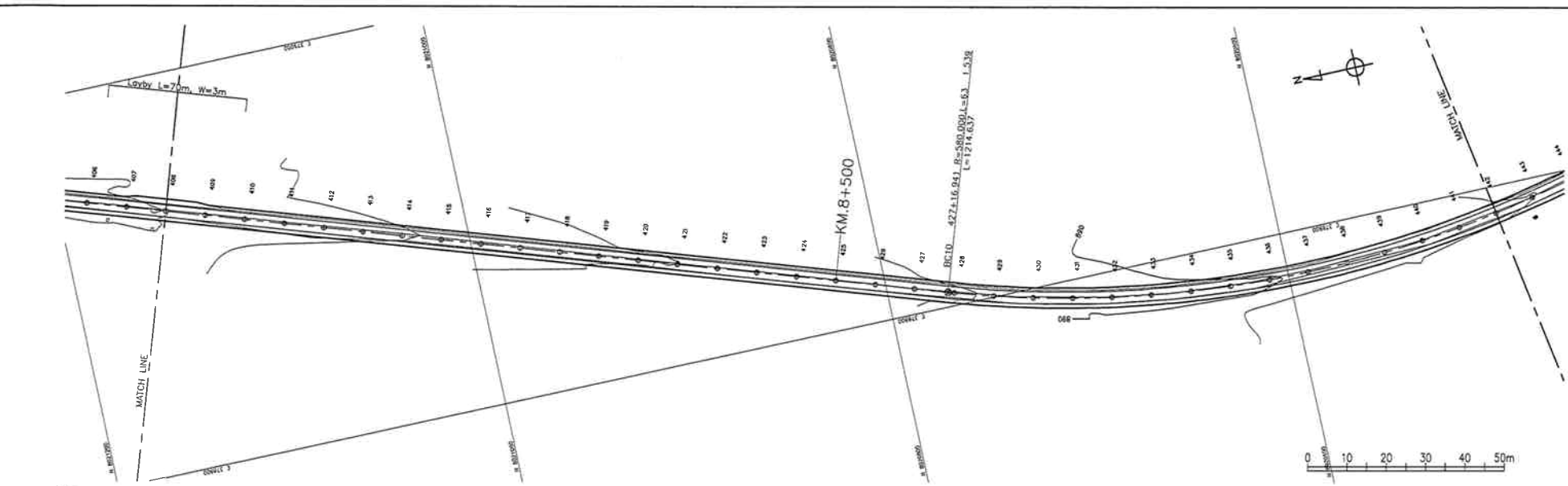


<ul style="list-style-type: none"> The Ministry of Local Government and Housing of The Republic of Zambia Japan International Cooperation Agency 	CONSULTANTS:	PROJECT NAME:	DRAWING TITLE:	Date: March 2008	DRAWING No.:
	Construction Project Consultants, INC. (CPC)	THE PROJECT FOR IMPROVEMENT OF LIVINGSTONE CITY ROADS	PLAN AND PROFILE (13/20) KM 7+480 - KM 8+160	Prepared by:	ZL BD D-13
				Checked by:	



- The Ministry of Local Government and Housing of The Republic of Zambia
- Japan International Cooperation Agency

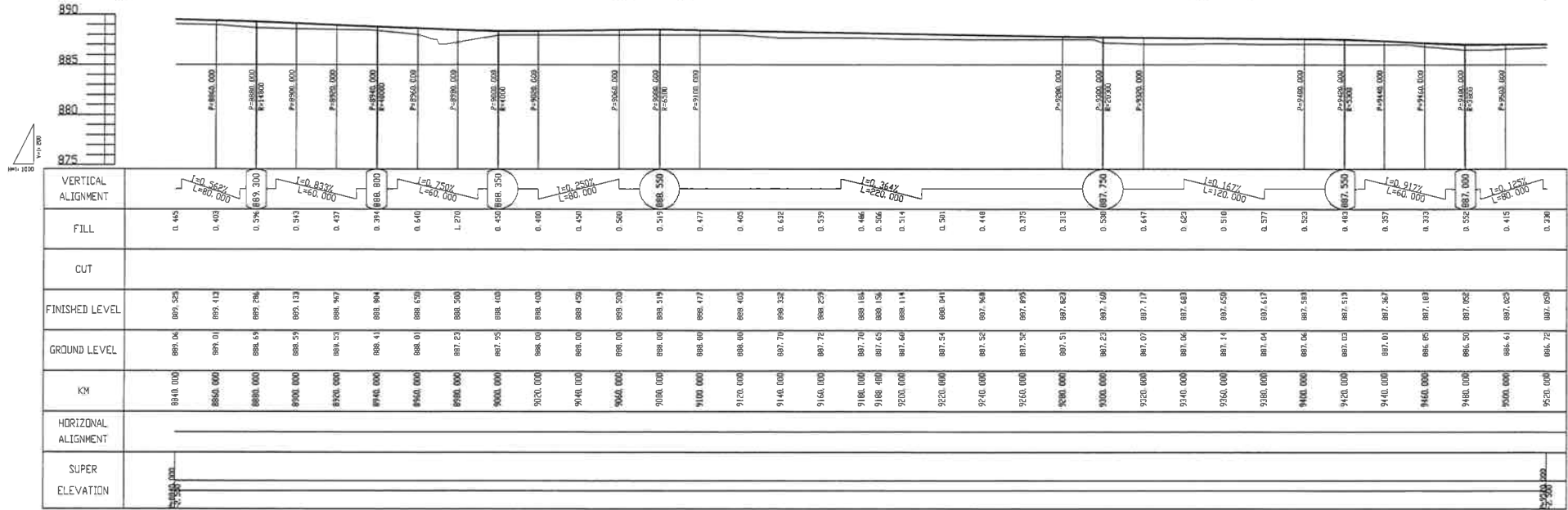
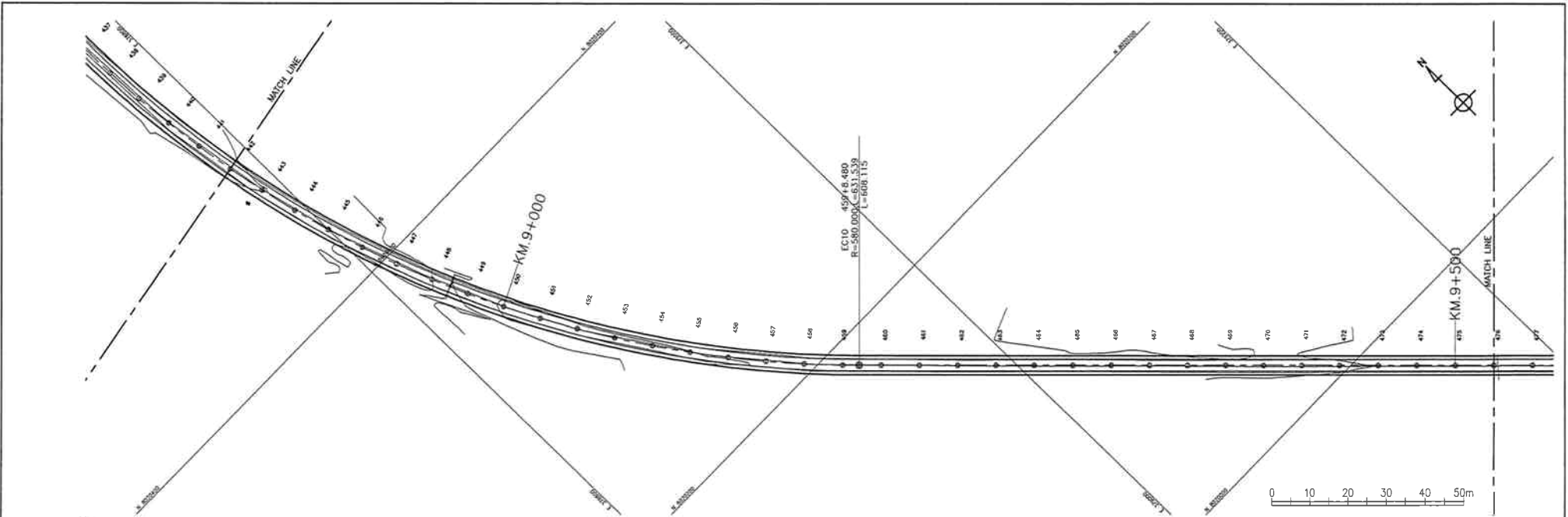
CONSULTANTS:
Construction Project Consultants, INC. (CPC)

PROJECT NAME:
THE PROJECT FOR IMPROVEMENT OF LIVINGSTONE CITY ROADS

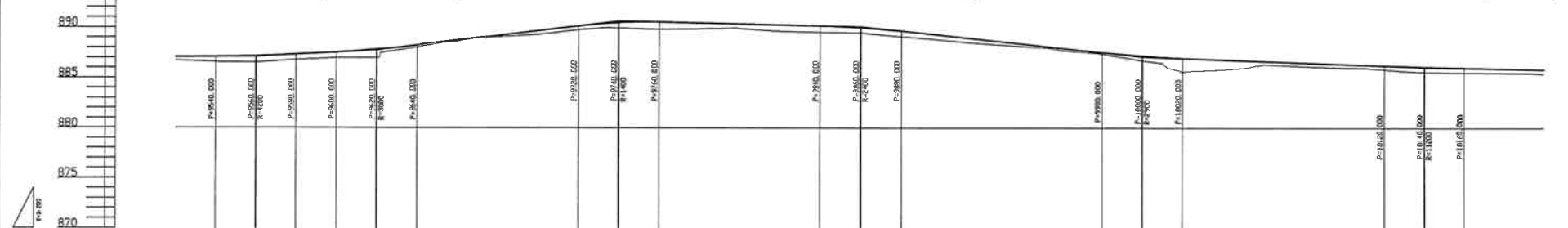
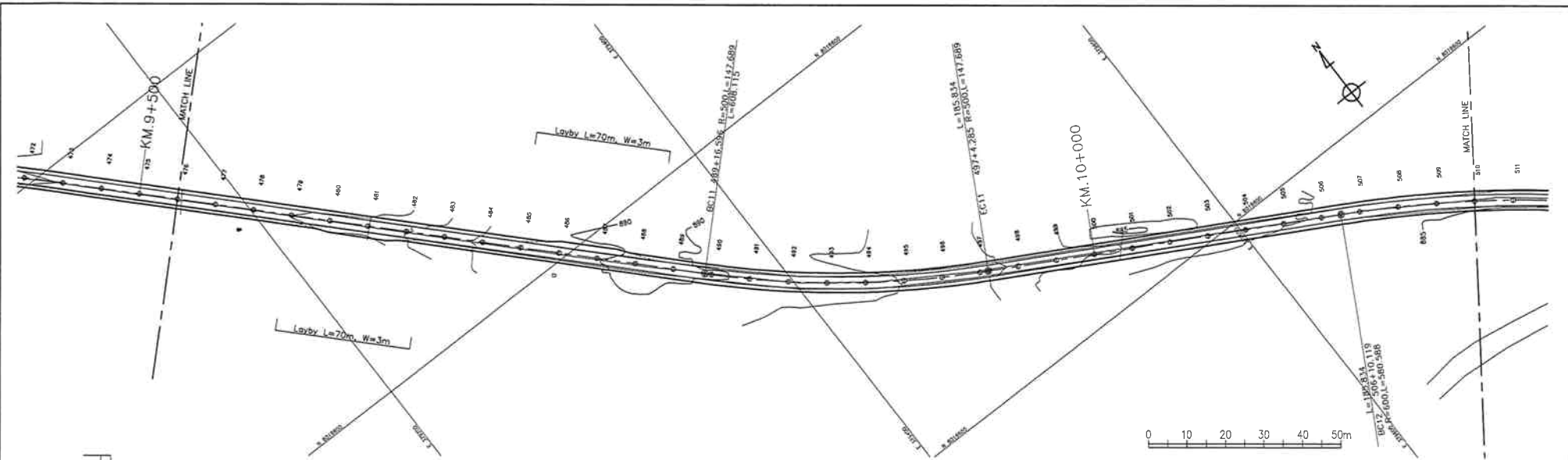
DRAWING TITLE:
PLAN AND PROFILE (14/20)
KM 8+160 - KM 8+840

Date: March 2008
Prepared by:
Checked by:

DRAWING No.:
ZL BD D-14

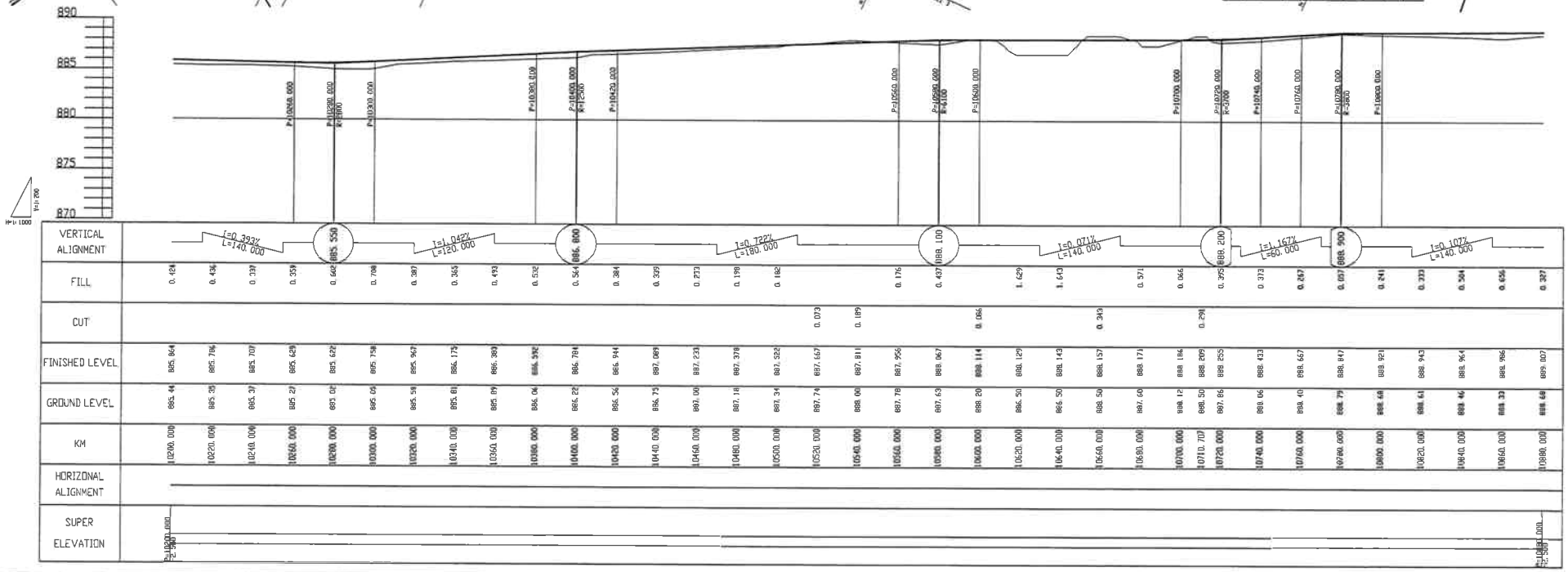
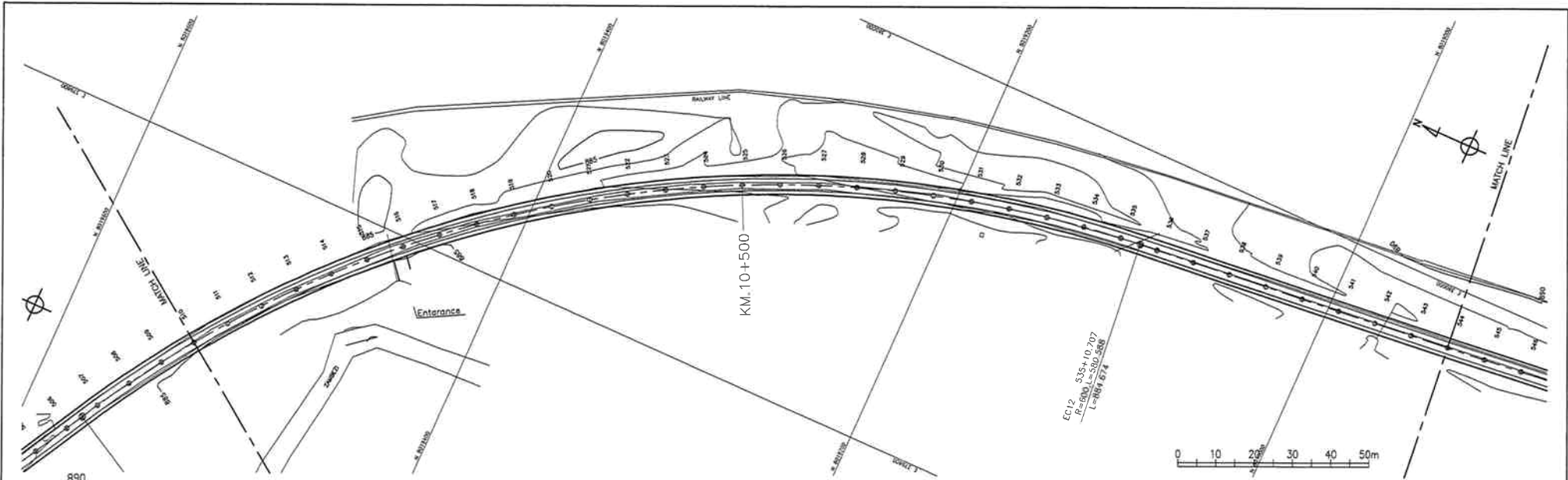


<ul style="list-style-type: none"> The Ministry of Local Government and Housing of The Republic of Zambia Japan International Cooperation Agency 	CONSULTANTS:	PROJECT NAME:	DRAWING TITLE:	Date: March 2008	DRAWING No.:
	Construction Project Consultants, INC. (CPC)	THE PROJECT FOR IMPROVEMENT OF LIVINGSTONE CITY ROADS	PLAN AND PROFILE (15/20) KM 8+840 - KM 9+520	Prepared by:	ZL BD D-15
				Checked by:	

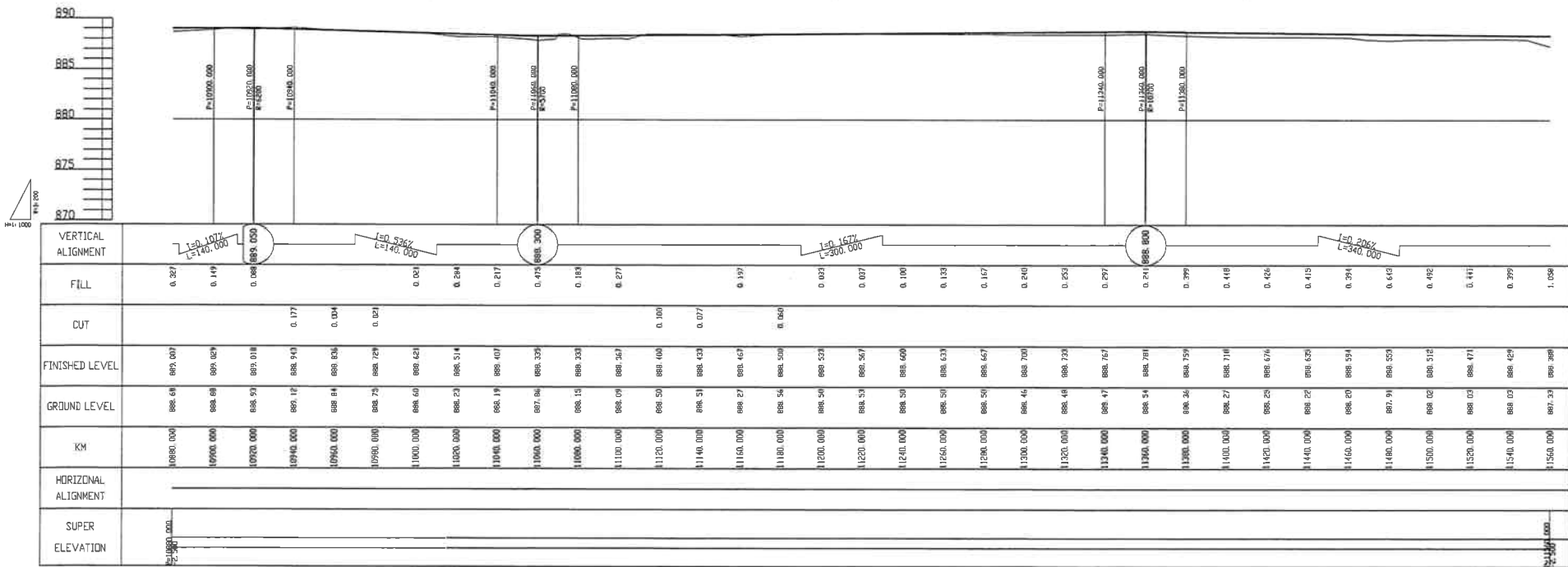
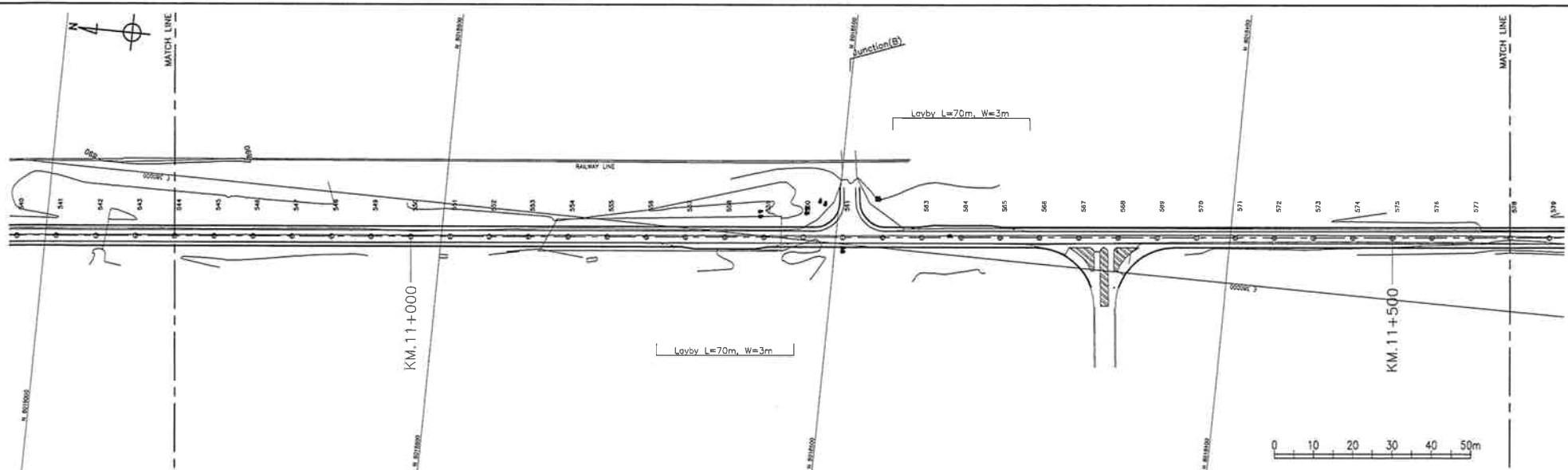


VERTICAL ALIGNMENT	FILL	CUT	FINISHED LEVEL	GROUND LEVEL	KM	HORIZONTAL ALIGNMENT	SUPER ELEVATION
$L=0.125\%$ $L=300.000$	0.396		887.020	886.72	9520.000		
	0.500		887.025	886.57	9540.000		
$L=1.093\%$ $L=240.000$	0.648		887.149	886.50	9560.000		
	0.527		887.317	886.71	9580.000		
	0.561		887.533	886.97	9600.000		
	0.827		887.817	886.91	9620.000		
	0.813		888.230	888.02	9640.000		
	0.137		888.717	888.54	9660.000		
	0.138		889.298	888.07	9680.000		
	0.263		889.661	889.21	9700.000		
	0.377		890.167	889.71	9720.000		
	0.334		890.306	889.95	9740.000		
	0.718		890.359	889.94	9760.000		
	0.377		890.467	889.81	9780.000		
	0.411		890.391	889.90	9800.000		
	0.623		890.374	889.94	9820.000		
	0.631		890.281	889.65	9840.000		
	0.616		890.192	889.55	9860.000		
	0.528		890.018	889.45	9880.000		
	0.559		889.671	889.11	9900.000		
	0.477		889.257	888.78	9920.000		
	0.396		888.654	888.45	9940.000		
	0.254		888.114	888.18	9960.000		
	0.254		888.524	888.12	9980.000		
	0.223		887.951	887.77	10000.000		
	0.191		887.571	887.38	10020.000		
	0.468		887.218	886.75	10040.000		
	1.380		887.000	885.62	10060.000		
	1.060		886.650	885.71	10080.000		
	0.320		886.700	886.38	10100.000		
	0.290		886.550	886.16	10120.000		
	0.350		886.000	886.05	10140.000		
	0.390		886.250	885.87	10160.000		
	0.479		886.171	885.68	10180.000		
	0.520		886.118	885.51	10200.000		
	0.461		886.021	885.56	10220.000		
	0.423		885.943	885.52	10240.000		
	0.424		885.864	885.44	10260.000		

<ul style="list-style-type: none"> The Ministry of Local Government and Housing of The Republic of Zambia Japan International Cooperation Agency 	CONSULTANTS:	PROJECT NAME:	DRAWING TITLE:	Date: March 2008	DRAWING No.:
	Construction Project Consultants, INC. (CPC)	THE PROJECT FOR IMPROVEMENT OF LIVINGSTONE CITY ROADS	PLAN AND PROFILE (16/20) KM 9+520 - KM 10+200	Prepared by:	ZL BD D-16
				Checked by:	



<ul style="list-style-type: none"> The Ministry of Local Government and Housing of The Republic of Zambia Japan International Cooperation Agency 	CONSULTANTS:	PROJECT NAME:	DRAWING TITLE:	Date: March 2008	DRAWING No.:
	Construction Project Consultants, INC. (CPC)	THE PROJECT FOR IMPROVEMENT OF LIVINGSTONE CITY ROADS	PLAN AND PROFILE (17/20) KM 10+200 - KM 10+880	Prepared by:	ZL BD D-17
				Checked by:	



• The Ministry of Local Government and Housing of The Republic of Zambia
 • Japan International Cooperation Agency

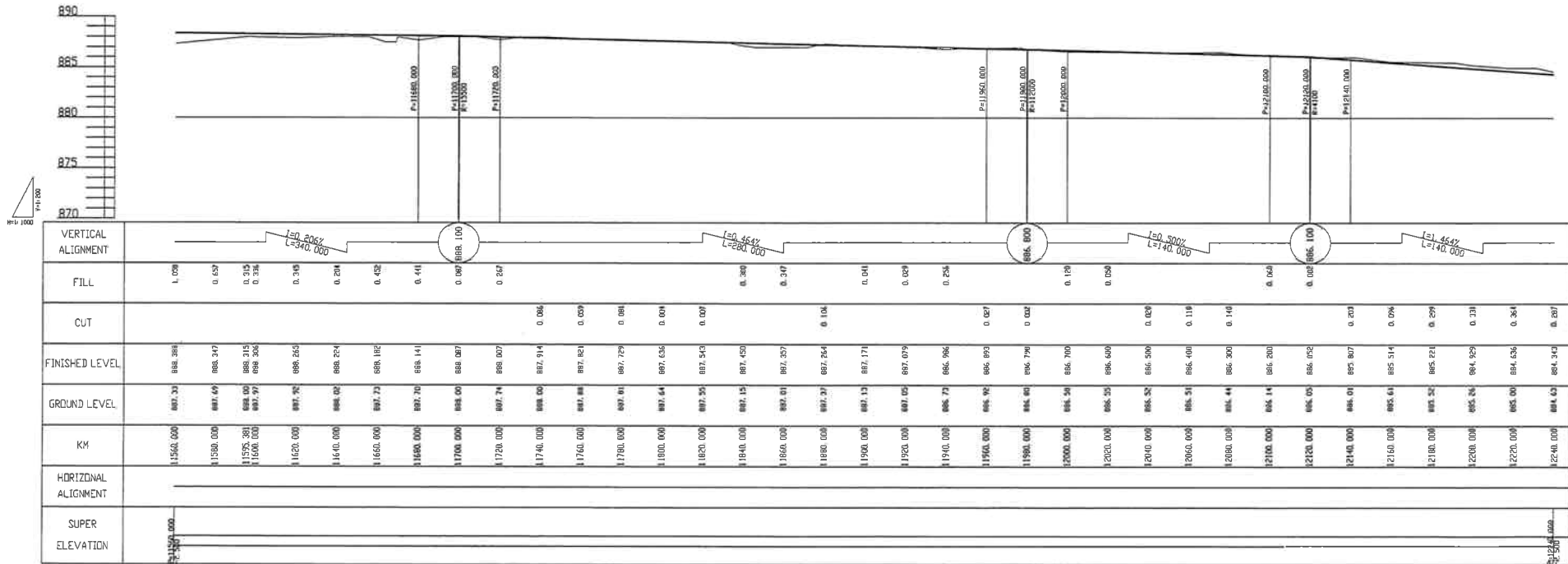
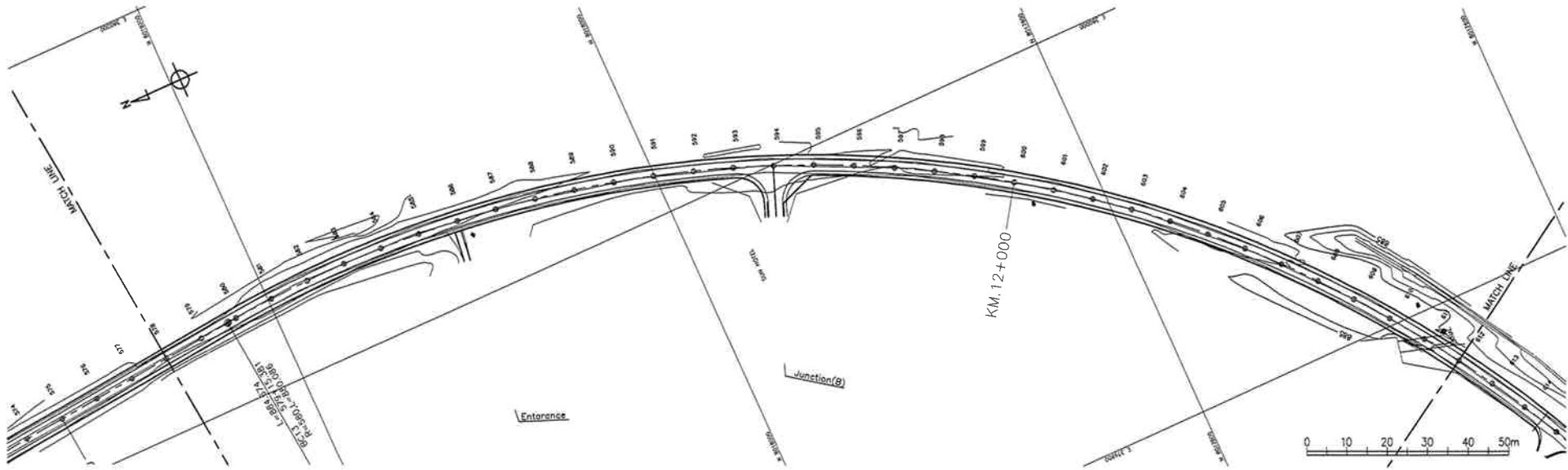
CONSULTANTS:
 Construction Project Consultants, INC. (CPC)

PROJECT NAME:
 THE PROJECT FOR IMPROVEMENT OF LIVINGSTONE CITY ROADS

DRAWING TITLE:
 PLAN AND PROFILE (18/20)
 KM 10+880 - KM 11+560

Date: March 2008
 Prepared by:
 Checked by:

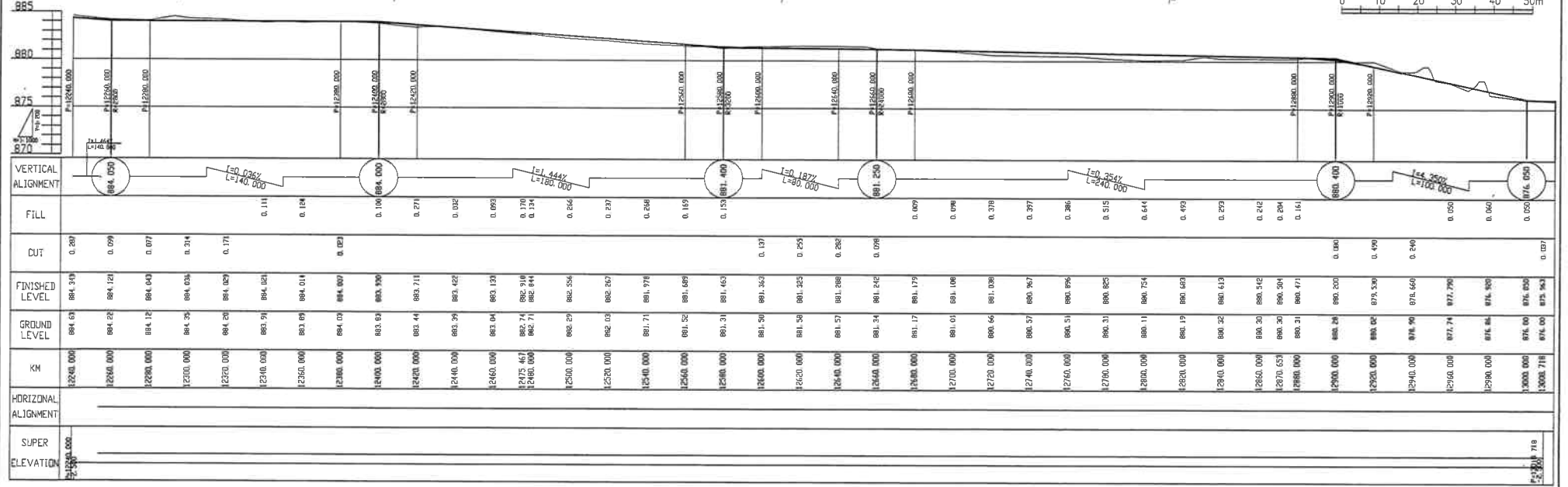
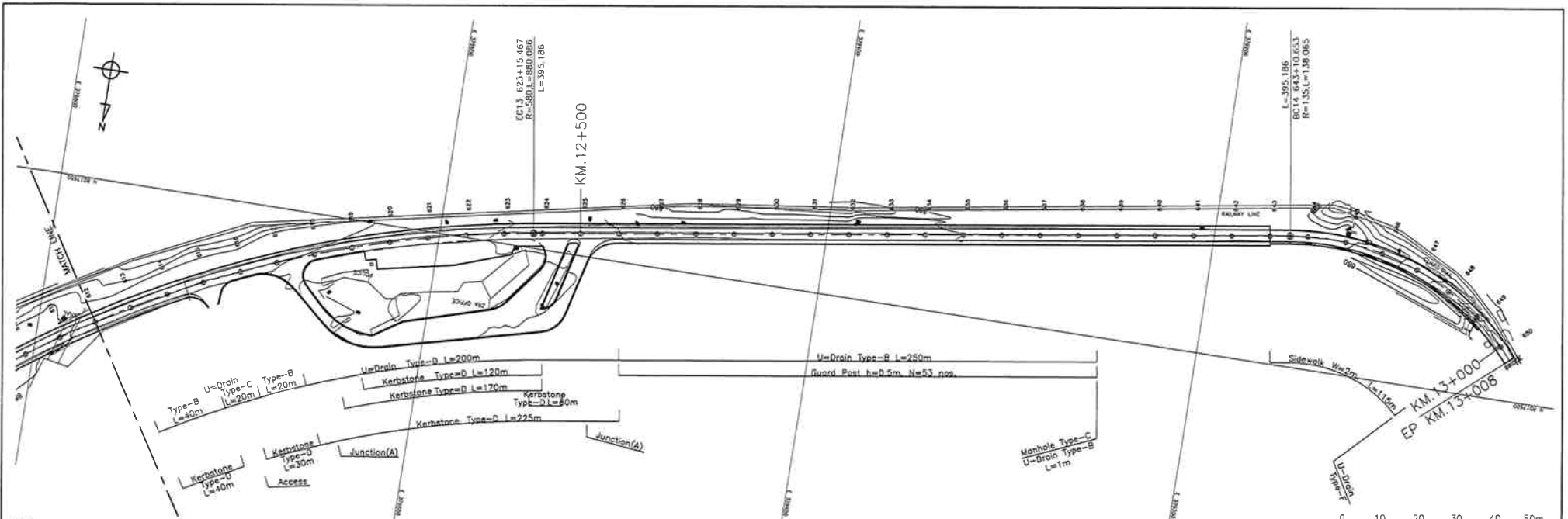
DRAWING No.:
 ZL BD D-18



VERTICAL ALIGNMENT	FILL	CUT	FINISHED LEVEL	GROUND LEVEL	KM	HORIZONTAL ALIGNMENT	SUPER ELEVATION
	1.009		888.398	887.30	11560.000		
	0.637		888.317	887.67	11580.000		
	0.315		888.315	888.00	11595.381		
	0.338		888.306	887.97	11600.000		
	0.348		888.265	887.92	11620.000		
	0.204		888.224	888.02	11640.000		
	0.432		888.182	887.73	11660.000		
	0.441		888.141	887.70	11680.000		
	0.087		888.097	888.00	11700.000		
	0.262		888.027	887.74	11720.000		
		0.086	887.914	888.00	11740.000		
		0.029	887.821	887.88	11760.000		
		0.081	887.729	887.61	11780.000		
		0.001	887.636	887.64	11800.000		
		0.007	887.543	887.35	11820.000		
		0.300	887.450	887.15	11840.000		
		0.347	887.357	887.01	11860.000		
		0.104	887.264	887.31	11880.000		
			887.171	887.13	11900.000		
		0.028	887.079	887.05	11920.000		
		0.258	886.986	886.73	11940.000		
		0.027	886.893	886.95	11960.000		
		0.028	886.799	886.81	11980.000		
			886.706	886.58	12000.000		
		0.128	886.613	886.35	12020.000		
		0.058	886.520	886.25	12040.000		
		0.027	886.427	886.20	12060.000		
		0.118	886.334	886.11	12080.000		
		0.141	886.241	886.00	12100.000		
		0.164	886.148	885.88	12120.000		
		0.027	886.055	885.82	12140.000		
		0.094	885.962	885.81	12160.000		
		0.259	885.869	885.72	12180.000		
		0.131	885.776	885.56	12200.000		
		0.264	885.683	885.00	12220.000		
		0.287	885.590	884.63	12240.000		

- The Ministry of Local Government and Housing of The Republic of Zambia
- Japan International Cooperation Agency

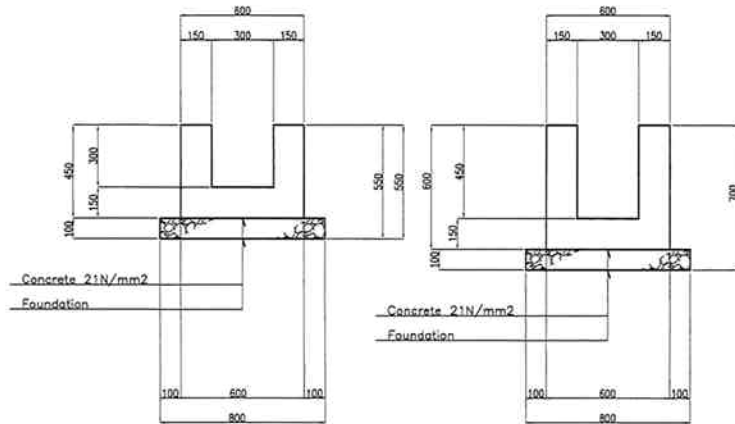
CONSULTANTS:	PROJECT NAME:	DRAWING TITLE:	Date: March 2008	DRAWING No.:
Construction Project Consultants, INC. (CPC)	THE PROJECT FOR IMPROVEMENT OF LIVINGSTONE CITY ROADS	PLAN AND PROFILE (19/20) KM 11+560 - KM 12+240	Prepared by:	ZL BD D-19
			Checked by:	



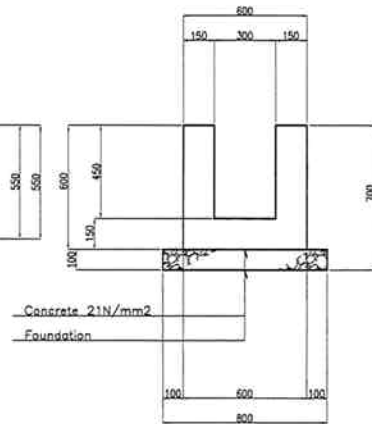
<ul style="list-style-type: none"> • The Ministry of Local Government and Housing of The Republic of Zambia • Japan International Cooperation Agency 	CONSULTANTS:	PROJECT NAME:	DRAWING TITLE:	Date: March 2008	DRAWING No.:
	Construction Project Consultants, INC. (CPC)	THE PROJECT FOR IMPROVEMENT OF LIVINGSTONE CITY ROADS	PLAN AND PROFILE (20/20) KM 12+240 - KM 13+008	Prepared by:	ZL BD D-20
				Checked by:	

U-DRAIN

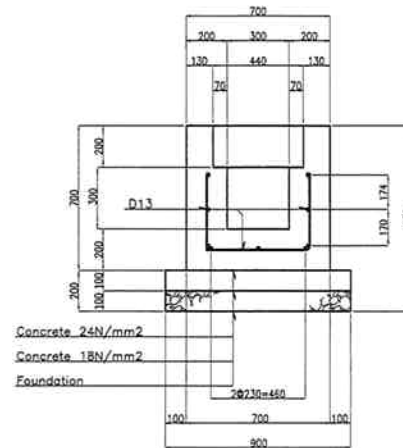
U-DRAIN
TYPE-A
SCALE B



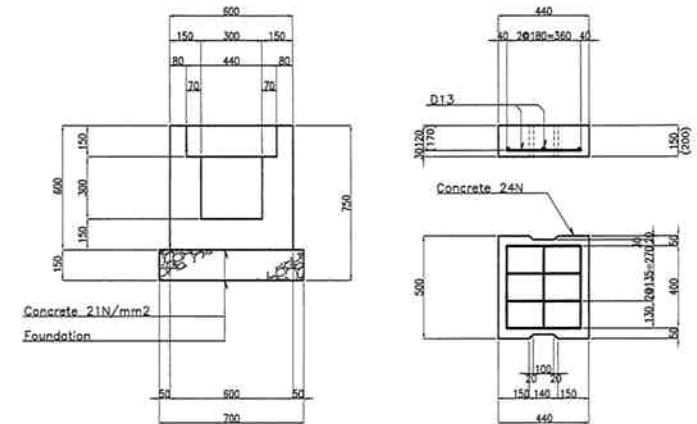
U-DRAIN
TYPE-B
SCALE B



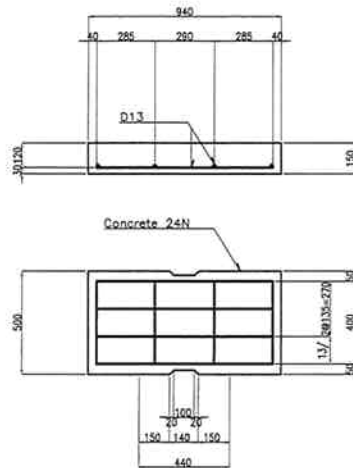
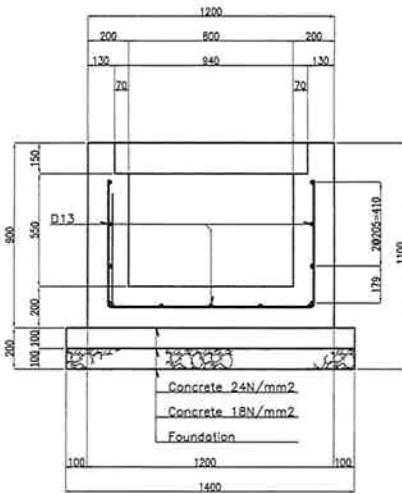
U-DRAIN
TYPE-D
SCALE B



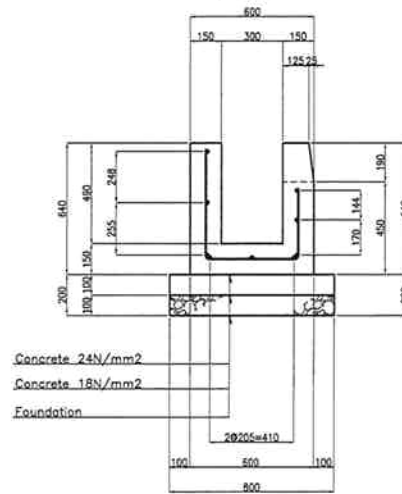
U-DRAIN
TYPE-C
SCALE B



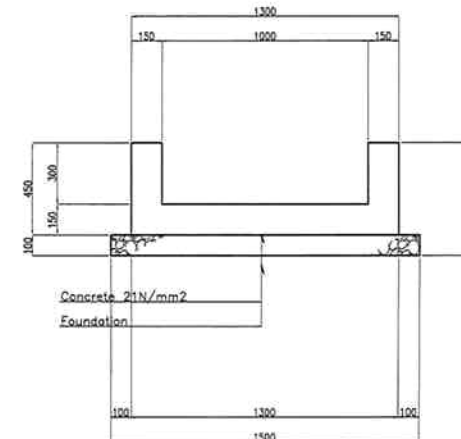
U-DRAIN
TYPE-F
SCALE B



U-DRAIN
TYPE-E
SCALE B



U-DRAIN
TYPE-G
SCALE B



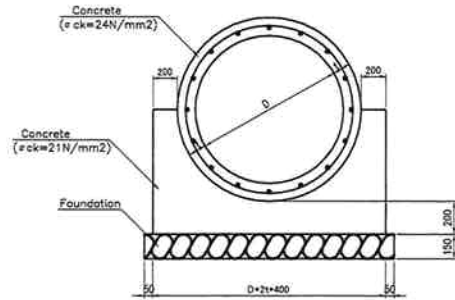
SCALE B 0 1m

Note: Dimensions with () for Heavy Load use.

<ul style="list-style-type: none"> The Ministry of Local Government and Housing of The Republic of Zambia Japan International Cooperation Agency 	CONSULTANTS:	PROJECT NAME:	DRAWING TITLE:	Date: March 2008	DRAWING No.:
	Construction Project Consultants, INC. (CPC)	THE PROJECT FOR IMPROVEMENT OF LIVINGSTONE CITY ROADS	DRAINAGE U-DRAIN	Prepared by:	ZL BD E-1
				Checked by:	

REINFORCED CONCRETE PIPE

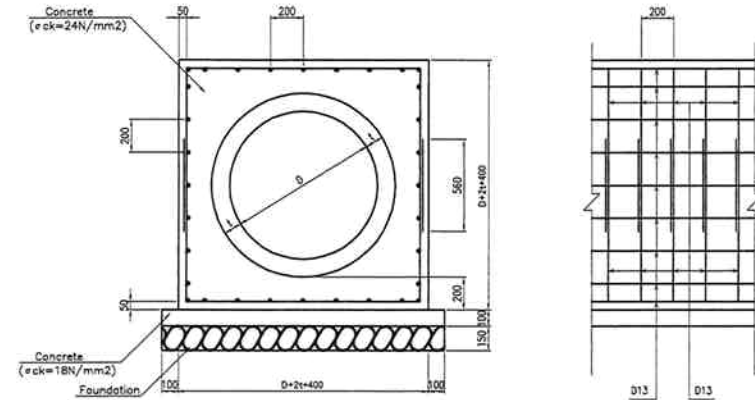
180° ENCASEMENT TYPE



DIMENSION LIST

TYPE	D
D450	450
D600	600
D900	900
D1000	1,000

360° ENCASEMENT TYPE



DIMENSION LIST

TYPE	D
D450	450
D600	600
D900	900
D1000	1,000

SCALE 0 0.5 1m

- The Ministry of Local Government and Housing of The Republic of Zambia
- Japan International Cooperation Agency

CONSULTANTS:
Construction Project Consultants, INC. (CPC)

PROJECT NAME:
THE PROJECT FOR IMPROVEMENT OF LIVINGSTONE CITY ROADS

DRAWING TITLE:
DRAINAGE REINFORCED CONCRETE PIPE

Date: March 2008
Prepared by:
Checked by:

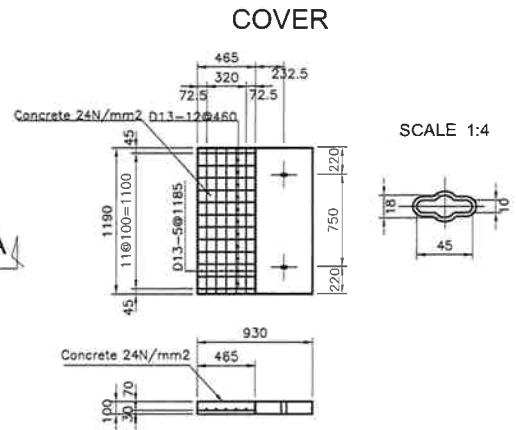
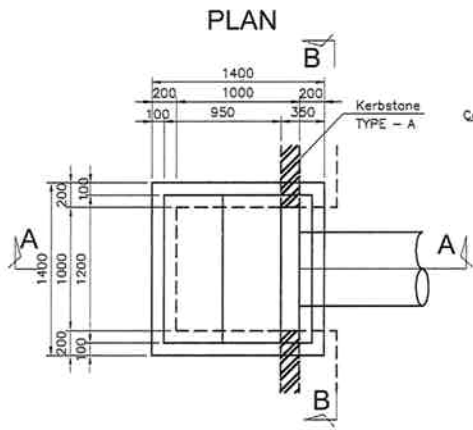
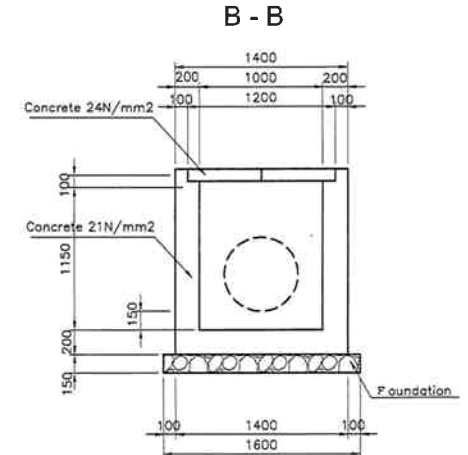
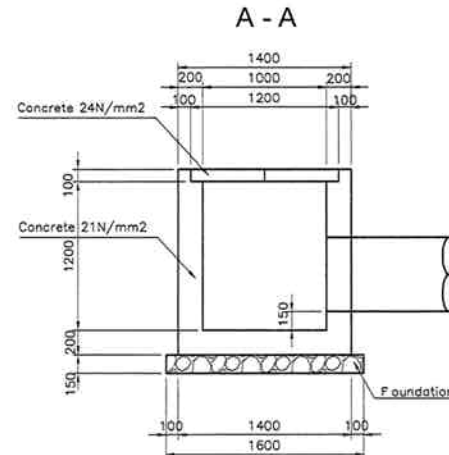
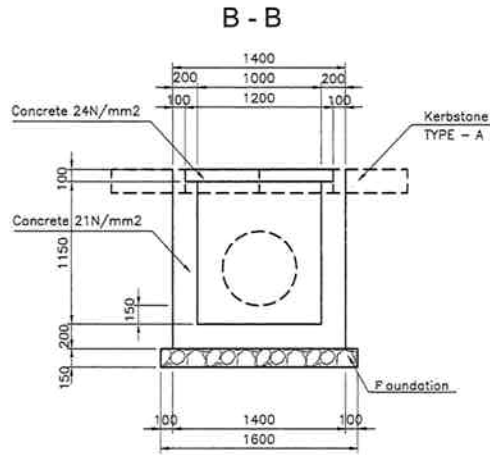
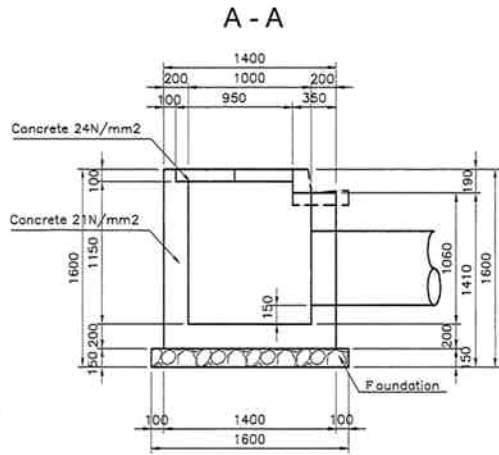
DRAWING No.:
ZL BD E-2

CATCH PIT

TYPE - A

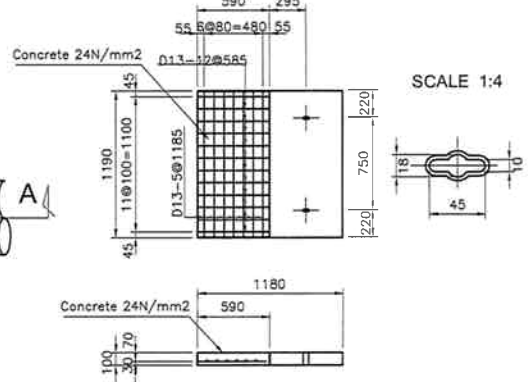
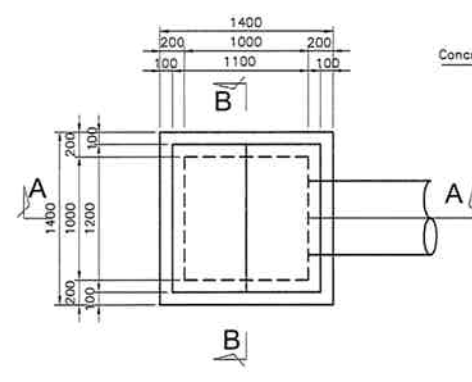
SCALE 1:40

TYPE - B



PLAN

COVER



- The Ministry of Local Government and Housing of The Republic of Zambia
- Japan International Cooperation Agency

CONSULTANTS:
Construction Project Consultants, INC. (CPC)

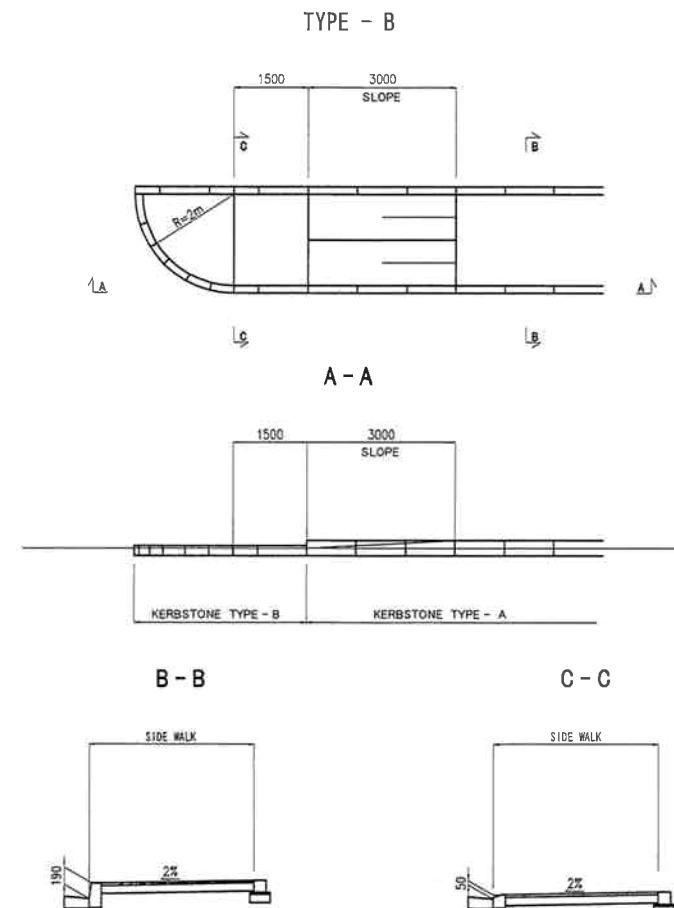
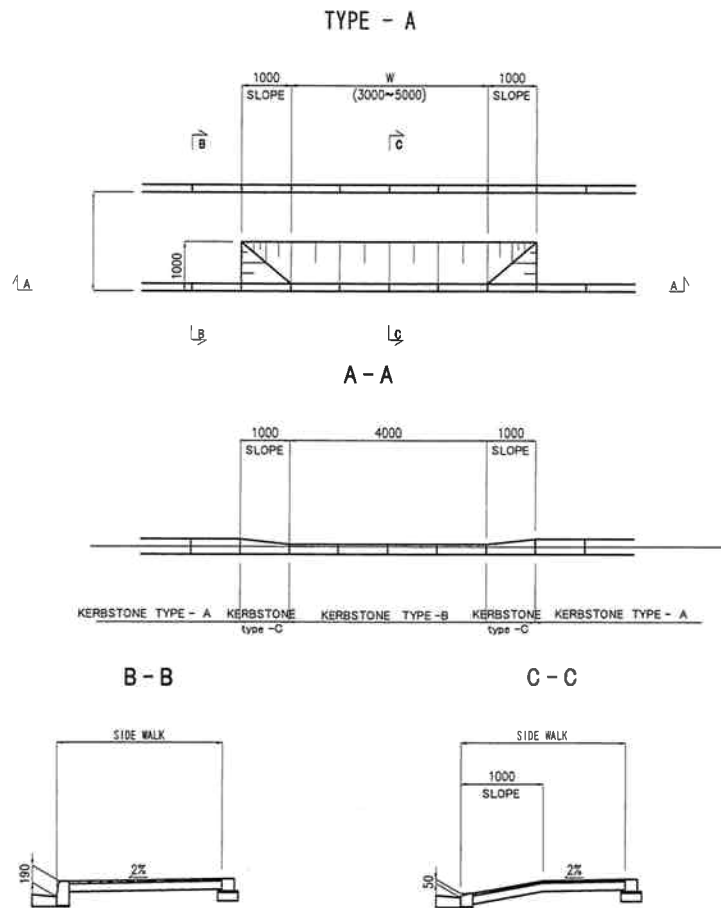
PROJECT NAME:
THE PROJECT FOR IMPROVEMENT OF LIVINGSTONE CITY ROADS

DRAWING TITLE:
DRAINAGE CATCH PIT

Date: March 2008
Prepared by:
Checked by:

DRAWING No.:
ZL BD E-3

WALKWAY ACCESS

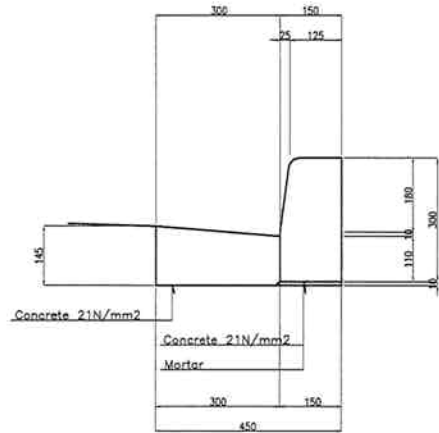


1:100 SCALE 0 1 2m
 1:60 SCALE 0 1 2m

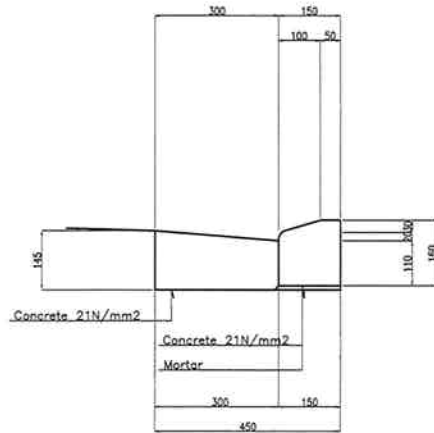
<ul style="list-style-type: none"> ● The Ministry of Local Government and Housing of The Republic of Zambia ● Japan International Cooperation Agency 	CONSULTANTS:	PROJECT NAME:	DRAWING TITLE:	Date: March 2008	DRAWING No.:
	Construction Project Consultants, INC. (CPC)	THE PROJECT FOR IMPROVEMENT OF LIVINGSTONE CITY ROADS	INCIDENTAL WORKS-1 WALKWAY ACCESS	Prepared by:	Checked by:

KERBSTONE

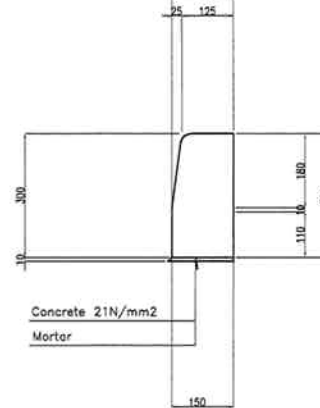
**KERBSTONE
TYPE-A**



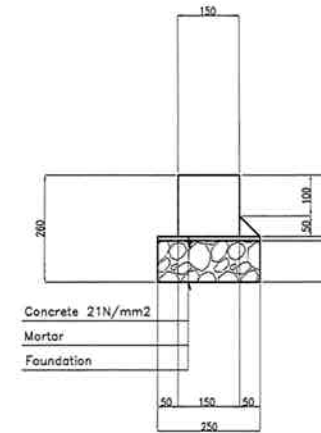
**KERBSTONE
TYPE-B**



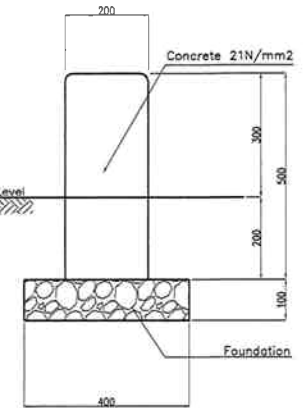
**KERBSTONE
TYPE-C**



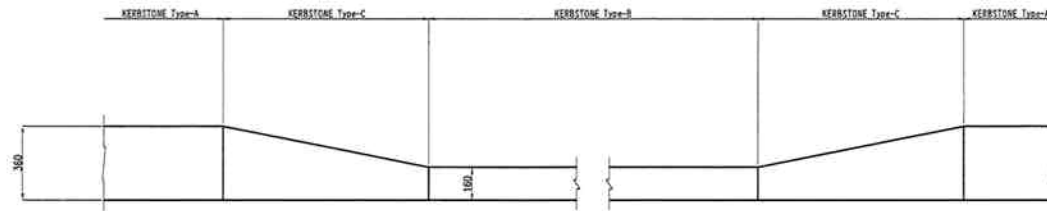
**KERBSTONE
TYPE-E**



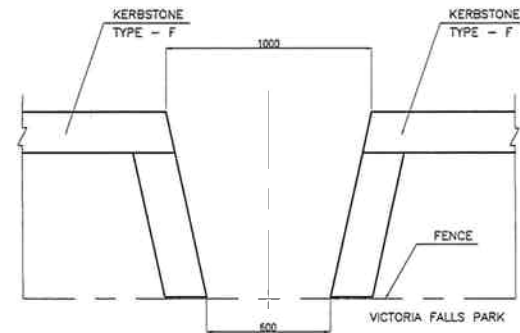
**KERBSTONE
TYPE-F**



**KERBSTONE
TYPE-C**



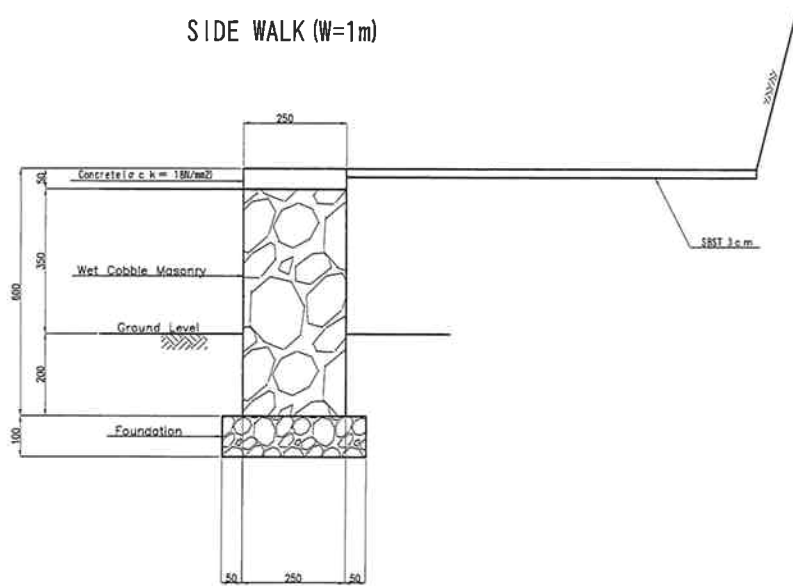
**PLAN
TYPE-F**



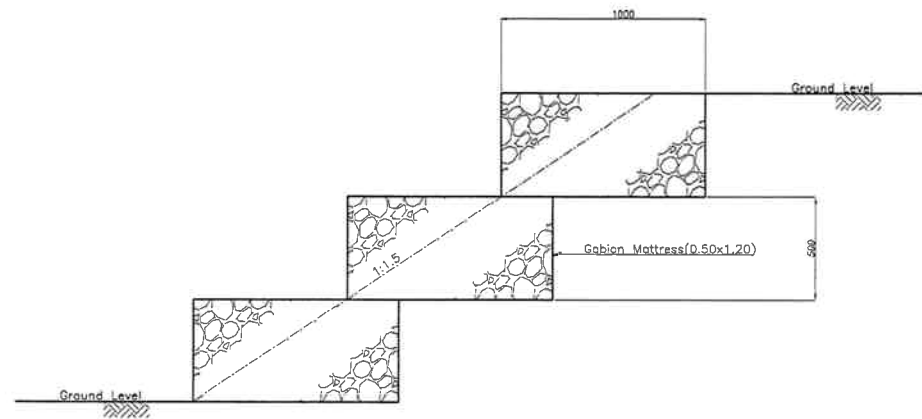
SCALE A 0.5m

<ul style="list-style-type: none"> The Ministry of Local Government and Housing of The Republic of Zambia Japan International Cooperation Agency 	CONSULTANTS:	PROJECT NAME:	DRAWING TITLE:	Date: March 2008	DRAWING No.:
	Construction Project Consultants, INC. (CPC)	THE PROJECT FOR IMPROVEMENT OF LIVINGSTONE CITY ROADS	INCIDENTAL WORKS-2 KERBSTONE	Prepared by: Checked by:	ZL BD F-2

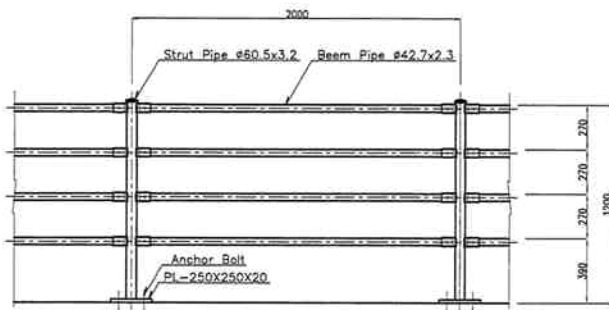
SIDE WALK (W=1m)



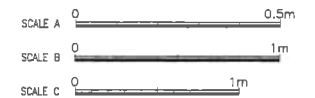
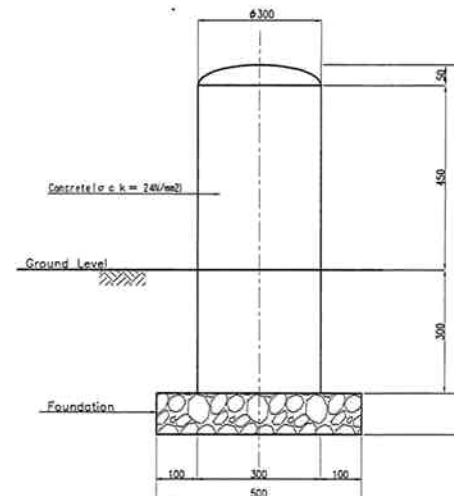
MAT GABIONS



GUARD FENCE (BRIDGE)



GUARD POST



- The Ministry of Local Government and Housing of The Republic of Zambia
- Japan International Cooperation Agency

CONSULTANTS:
Construction Project Consultants, INC. (CPC)

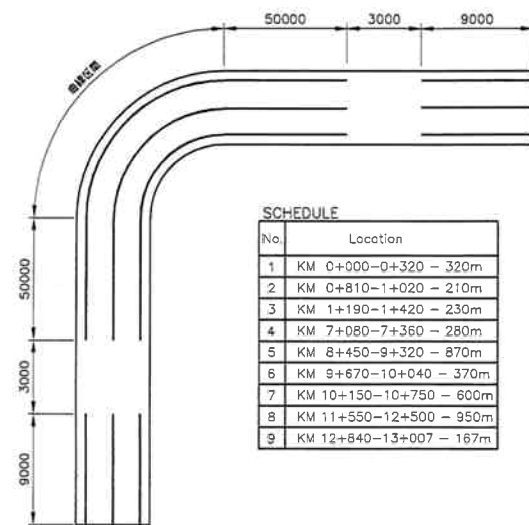
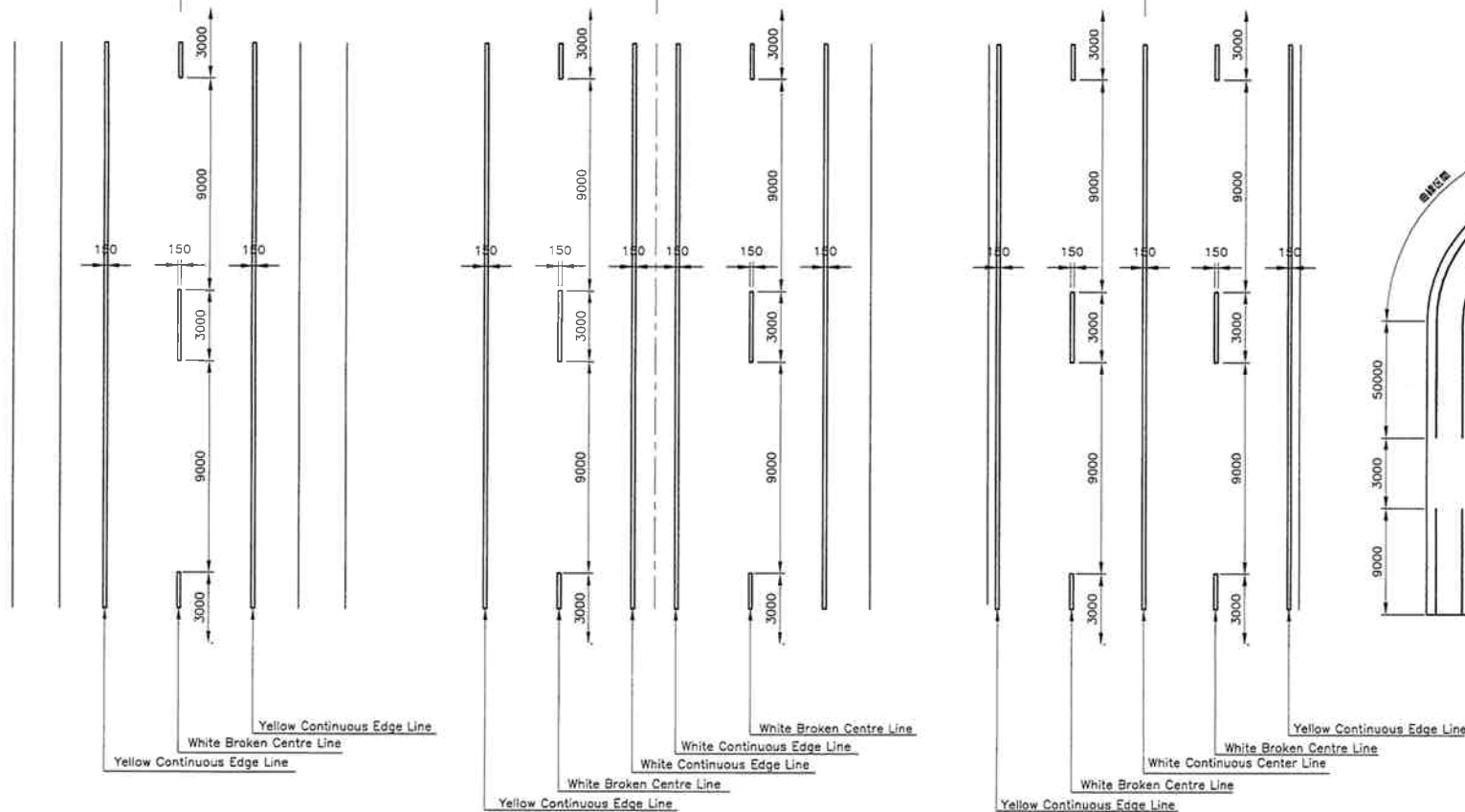
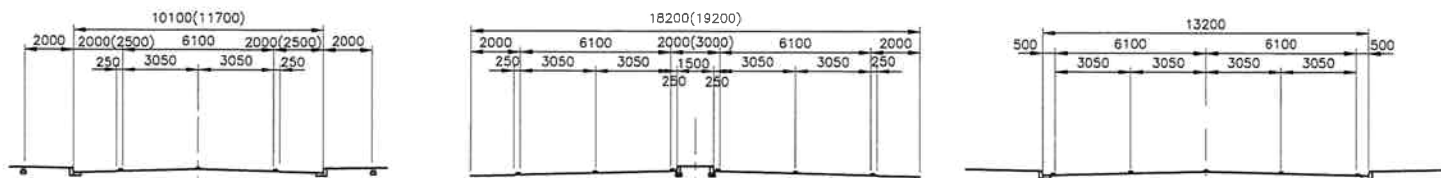
PROJECT NAME:
THE PROJECT FOR IMPROVEMENT OF LIVINGSTONE CITY ROADS

DRAWING TITLE:
INCIDENTAL WORKS-3 STRUCTURES

Date: March 2008
Prepared by:
Checked by:

DRAWING No.:
ZL BD F-3

ROAD MARKING



SCHEDULE

No.	Location
1	KM 0+000-0+320 - 320m
2	KM 0+810-1+020 - 210m
3	KM 1+190-1+420 - 230m
4	KM 7+080-7+360 - 280m
5	KM 8+450-9+320 - 870m
6	KM 9+670-10+040 - 370m
7	KM 10+150-10+750 - 600m
8	KM 11+550-12+500 - 950m
9	KM 12+840-13+007 - 167m

- The Ministry of Local Government and Housing of The Republic of Zambia
- Japan International Cooperation Agency

CONSULTANTS:

Construction Project Consultants, INC. (CPC)

PROJECT NAME:

THE PROJECT FOR IMPROVEMENT OF LIVINGSTONE CITY ROADS

DRAWING TITLE:

INCIDENTAL WORKS-4 ROAD MARKING

Date: March 2008

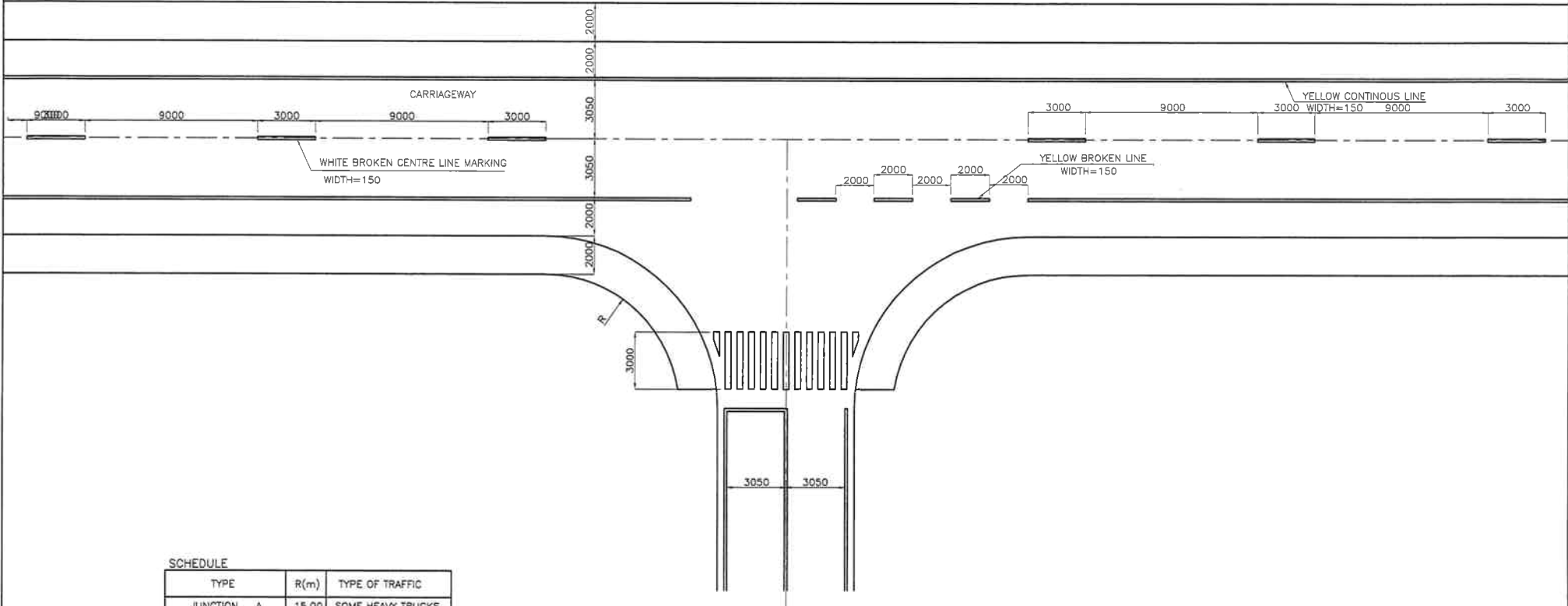
Prepared by:

Checked by:

DRAWING No.:

ZL BD F-4

JUNCTION LAYOUT AND ROAD MARKING



SCHEDULE

TYPE	R(m)	TYPE OF TRAFFIC
JUNCTION A	15.00	SOME HEAVY TRUCKS
JUNCTION B	8.00	SOME SMALL TRUCKS
JUNCTION C	6.00	LIGHT GOODS
ACCESS	4.00	PASSENGER CARS

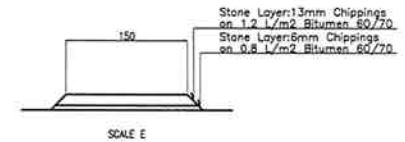
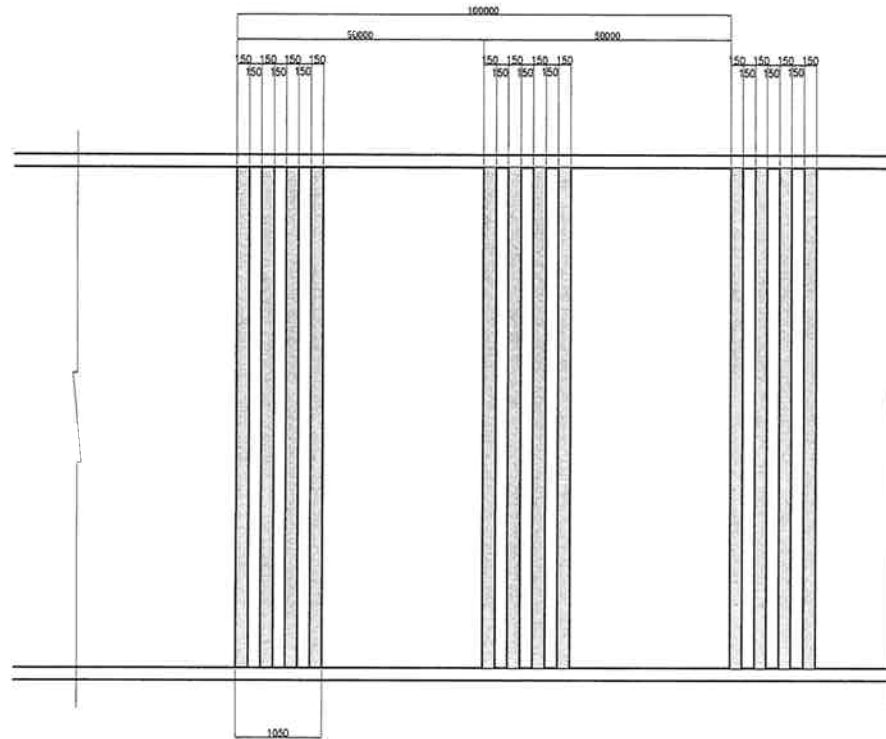
NOTE
 1. ALL DIMENSIONS IN MILLIMETERS UNLESS OTHERWISE INDICATED
 2. LOCATION OF WALKWAY DIFFERS FOR ROAD

<ul style="list-style-type: none"> The Ministry of Local Government and Housing of The Republic of Zambia Japan International Cooperation Agency 	CONSULTANTS:	PROJECT NAME:	DRAWING TITLE:	Date: March 2008	DRAWING No.:
	Construction Project Consultants, INC. (CPC)	THE PROJECT FOR IMPROVEMENT OF LIVINGSTONE CITY ROADS	INCIDENTAL WORKS-5 JUNCTION LAYOUT AND ROAD MARKING	Prepared by:	ZL BD F-5
				Checked by:	

HUMP

RUMBLE STRIP HUMP

SCALE D



SCALE E

SCHEDULE

No.	Location
1	KM 0+280 - 100m
2	KM 0+800 - 100m
3	KM 1+370 - 100m
4	KM 3+200 - 100m
5	KM 3+330 - 100m
6	KM 5+000 - 100m



- The Ministry of Local Government and Housing of The Republic of Zambia
- Japan International Cooperation Agency

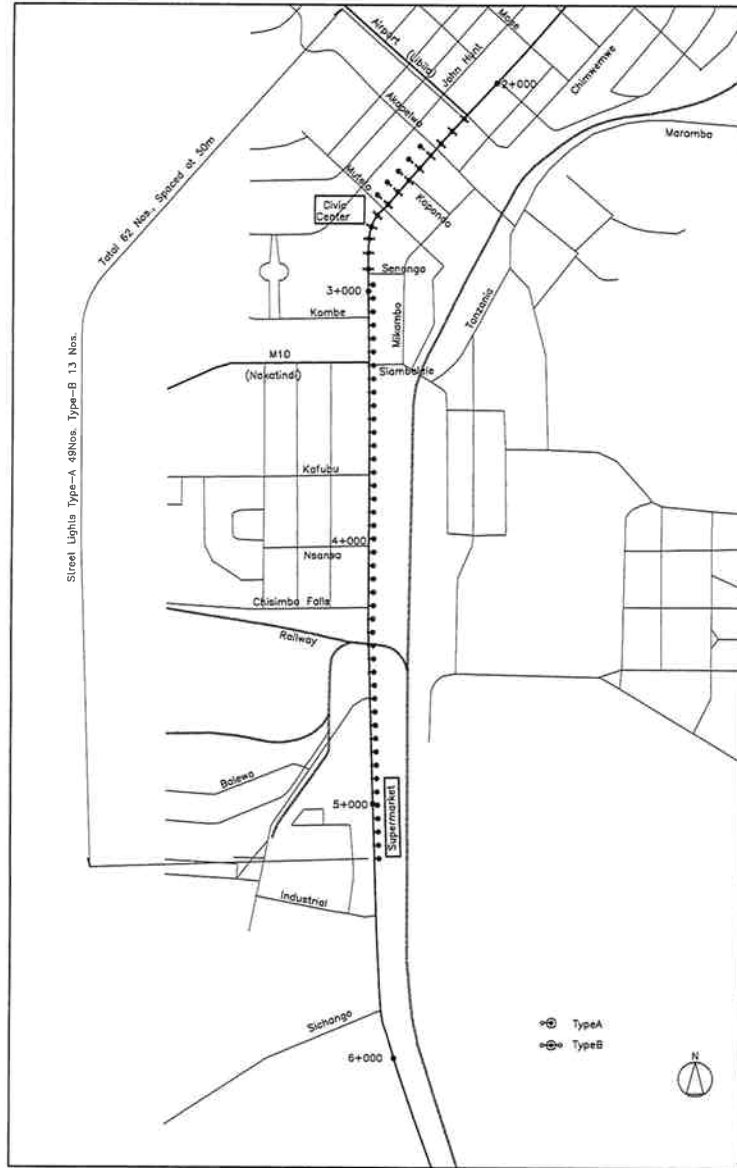
CONSULTANTS:
Construction Project Consultants, INC. (CPC)

PROJECT NAME:
THE PROJECT FOR IMPROVEMENT OF LIVINGSTONE CITY ROADS

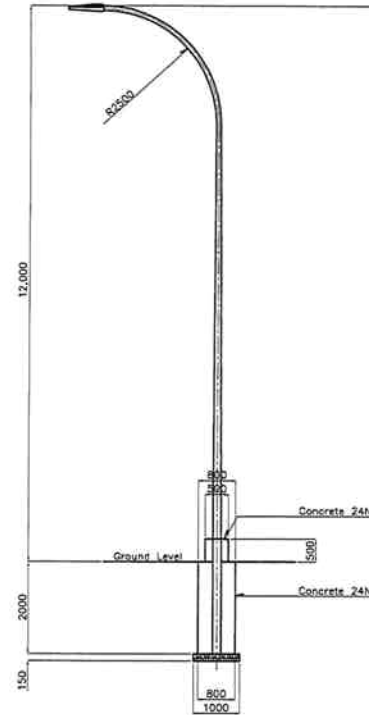
DRAWING TITLE:
INCIDENTAL WORKS-6 HUMP

Date: March 2008
Prepared by:
Checked by:

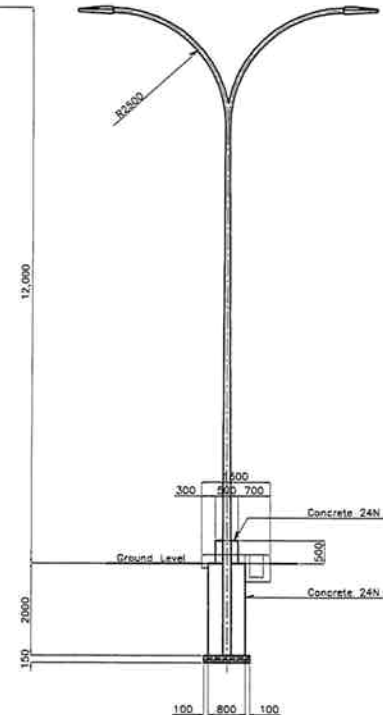
DRAWING No.:
ZL BD F-6



LAYOUT
NON SCALE



STREET LIGHT
Type A
SCALE A



STREET LIGHT
Type B
SCALE A

SCALE A 0 5m

- The Ministry of Local Government and Housing of The Republic of Zambia
- Japan International Cooperation Agency

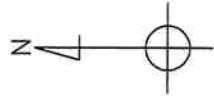
CONSULTANTS:
Construction Project Consultants, INC. (CPC)

PROJECT NAME:
THE PROJECT FOR IMPROVEMENT OF LIVINGSTONE CITY ROADS

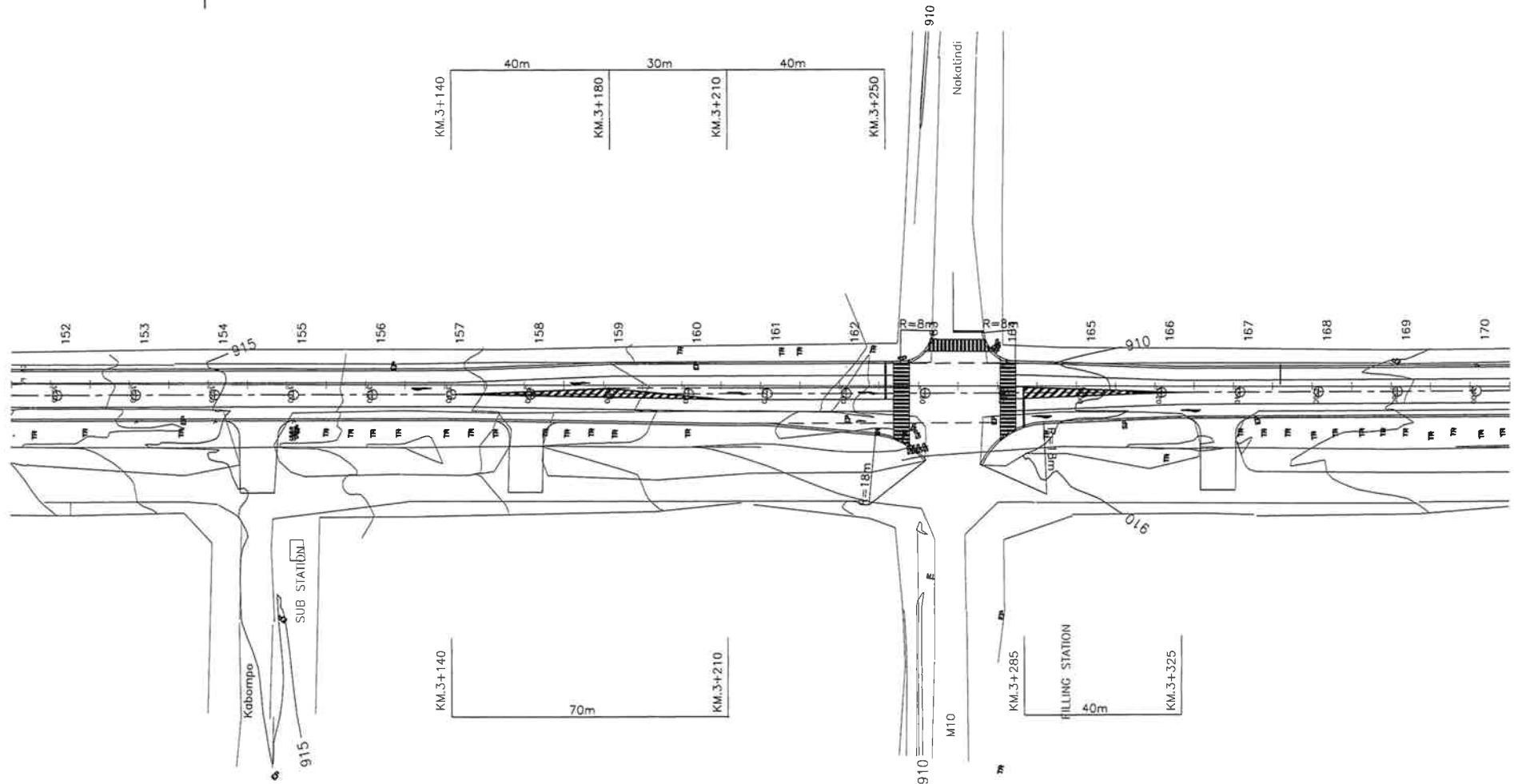
DRAWING TITLE:
INCIDENTAL WORKS-7 STREET LIGHT

Date: March 2008
Prepared by:
Checked by:

DRAWING No.:
ZL BD F-7



MAJOR JUNCTION DETAIL (M10 JUNCTION)



<ul style="list-style-type: none"> The Ministry of Local Government and Housing of The Republic of Zambia Japan International Cooperation Agency 	CONSULTANTS:	PROJECT NAME:	DRAWING TITLE:	Date: March 2008	DRAWING No.:
	Construction Project Consultants, INC. (CPC)	THE PROJECT FOR IMPROVEMENT OF LIVINGSTONE CITY ROADS	MAJOR JUNCTION DETAIL M10 JUNCTION	Prepared by:	ZL BD G-1
			Checked by:		