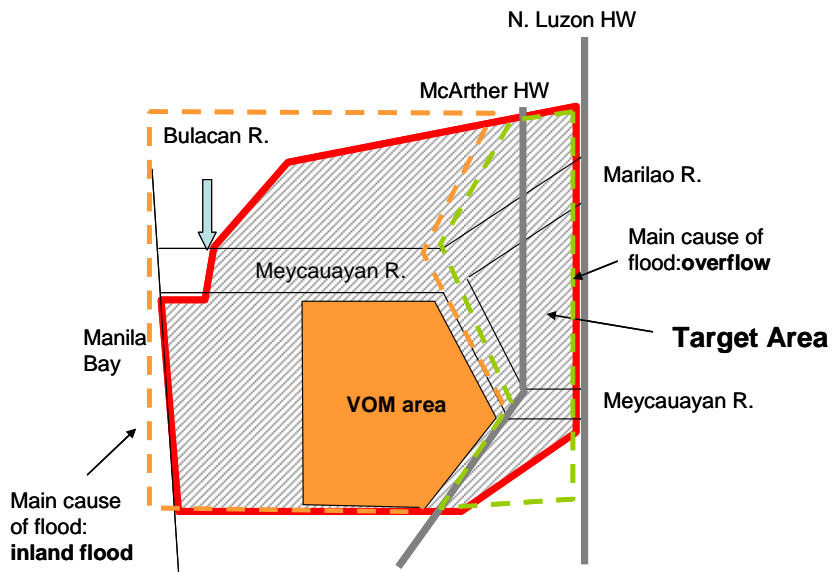


THE STUDY ON THE NATIONWIDE FLOOD RISK ASSESSMENT AND THE FLOOD MITIGATION PLAN FOR THE SELECTED AREAS IN THE REPUBLIC OF THE PHILIPPINES

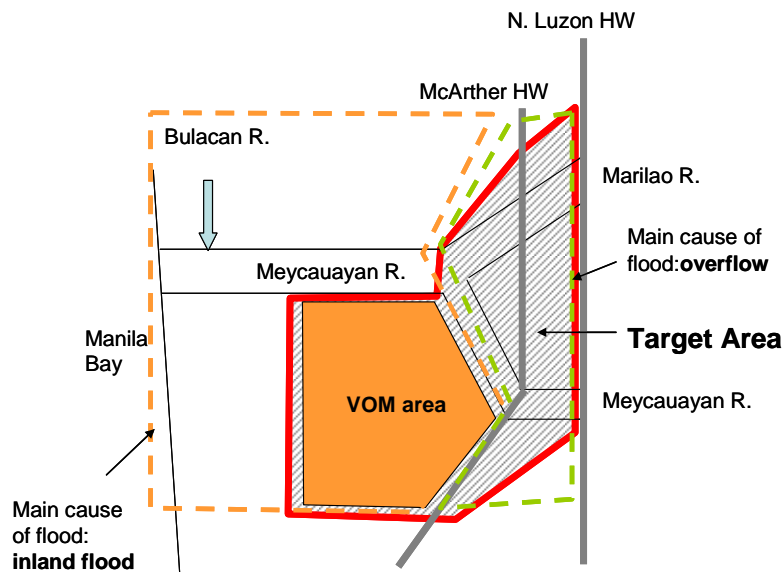
JAPAN INTERNATIONAL COOPERATION AGENCY

Fig. 5-5

Features of River Basin (Meycauayan)



Case-1



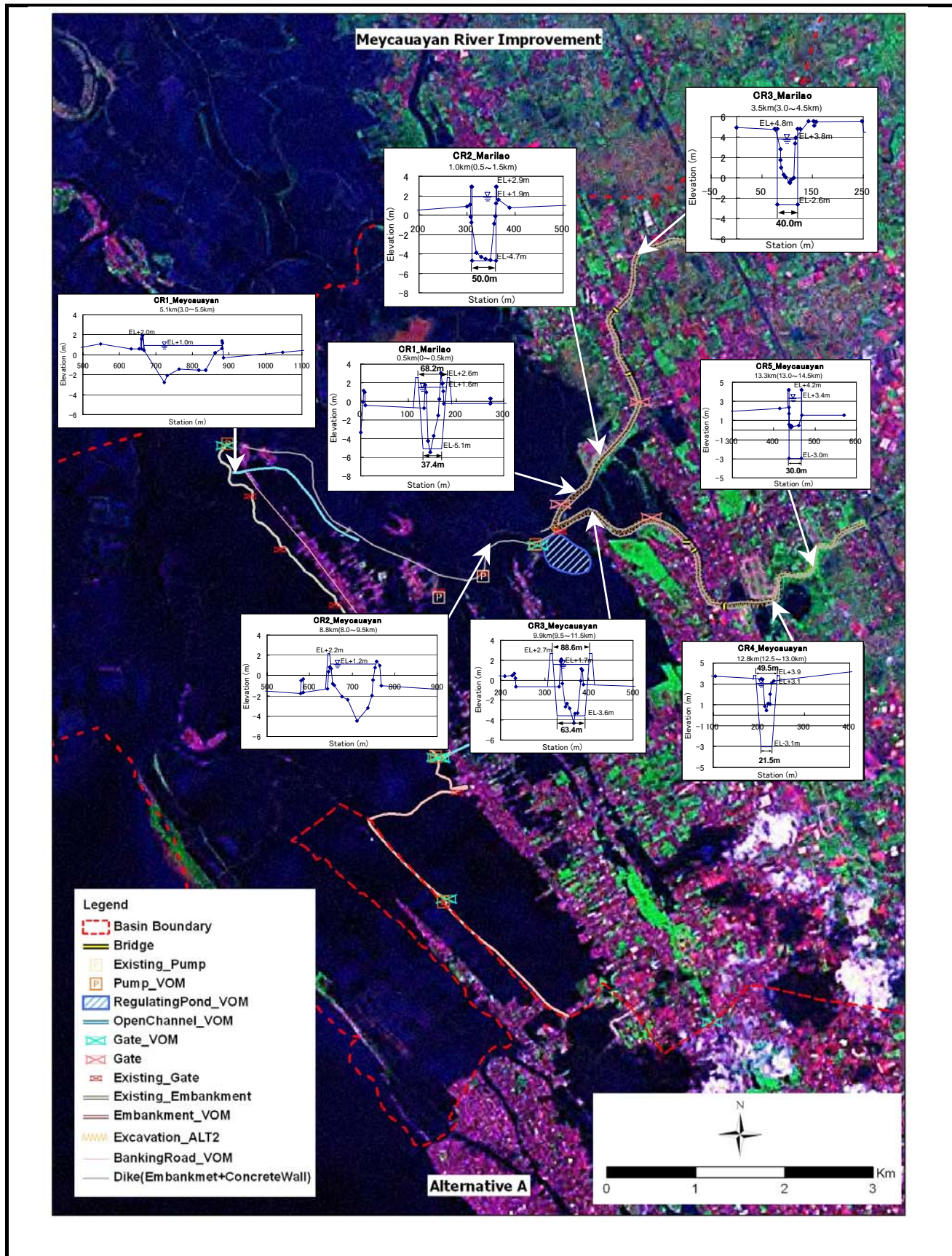
Case-2

THE STUDY ON THE NATIONWIDE FLOOD RISK ASSESSMENT AND THE FLOOD MITIGATION PLAN FOR THE SELECTED AREAS IN THE REPUBLIC OF THE PHILIPPINES

JAPAN INTERNATIONAL COOPERATION AGENCY

Fig. 5-6

Alternatives for Target Area to be Protected



THE STUDY ON THE NATIONWIDE FLOOD RISK ASSESSMENT AND THE FLOOD MITIGATION PLAN FOR THE SELECTED AREAS IN THE REPUBLIC OF THE PHILIPPINES

JAPAN INTERNATIONAL COOPERATION AGENCY

Fig. 5-7

Optimum Plan (Meycauayan)

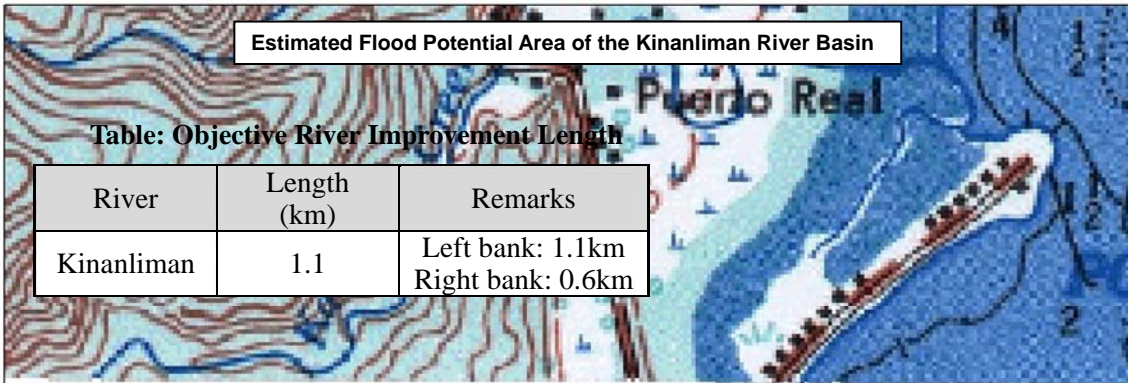
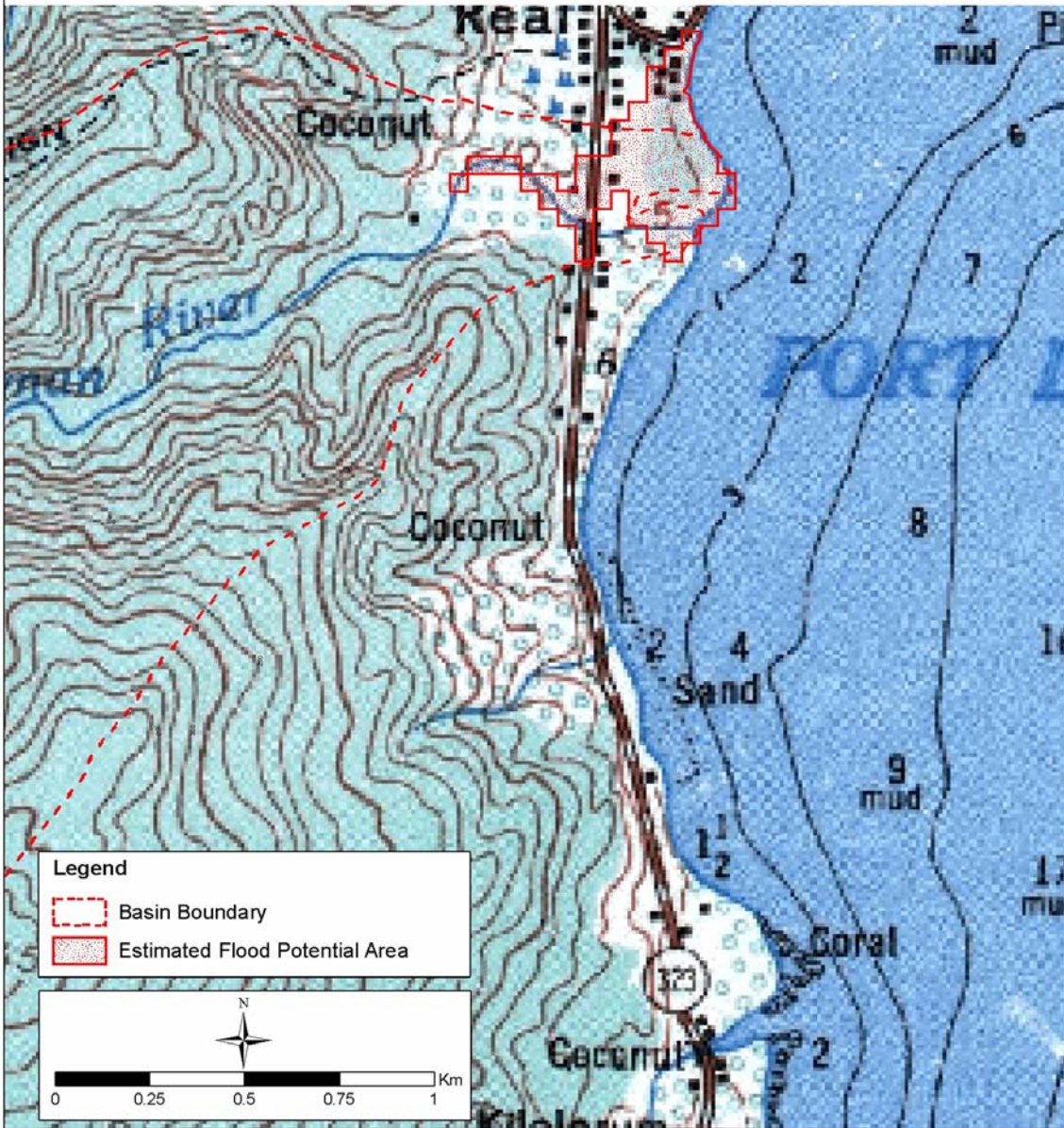


Table: Objective River Improvement Length

River	Length (km)	Remarks
Kinanliman	1.1	Left bank: 1.1km Right bank: 0.6km

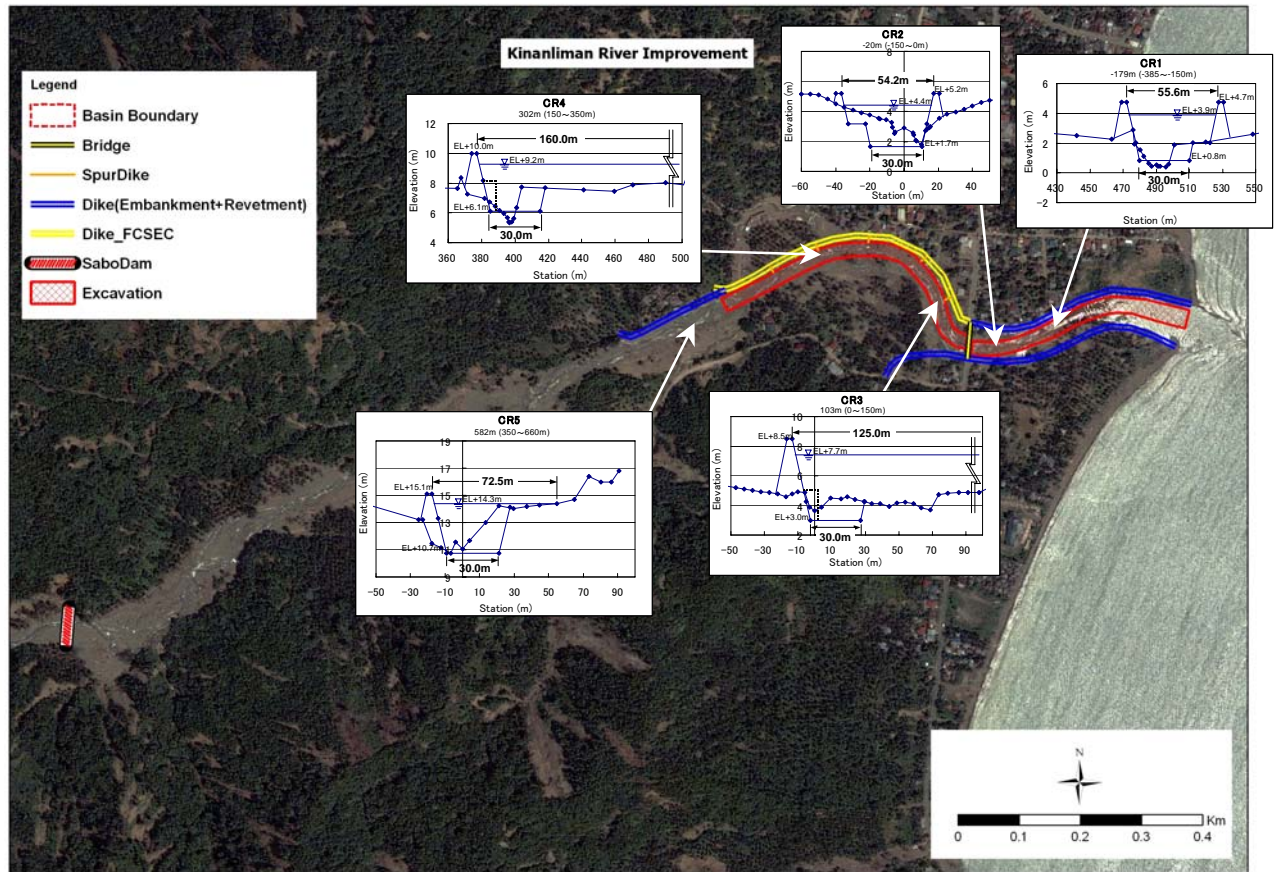


THE STUDY ON THE NATIONWIDE FLOOD RISK ASSESSMENT AND THE FLOOD MITIGATION PLAN FOR THE SELECTED AREAS IN THE REPUBLIC OF THE PHILIPPINES

JAPAN INTERNATIONAL COOPERATION AGENCY

Fig. 5-8

Features of River Basin (Kinanliman)

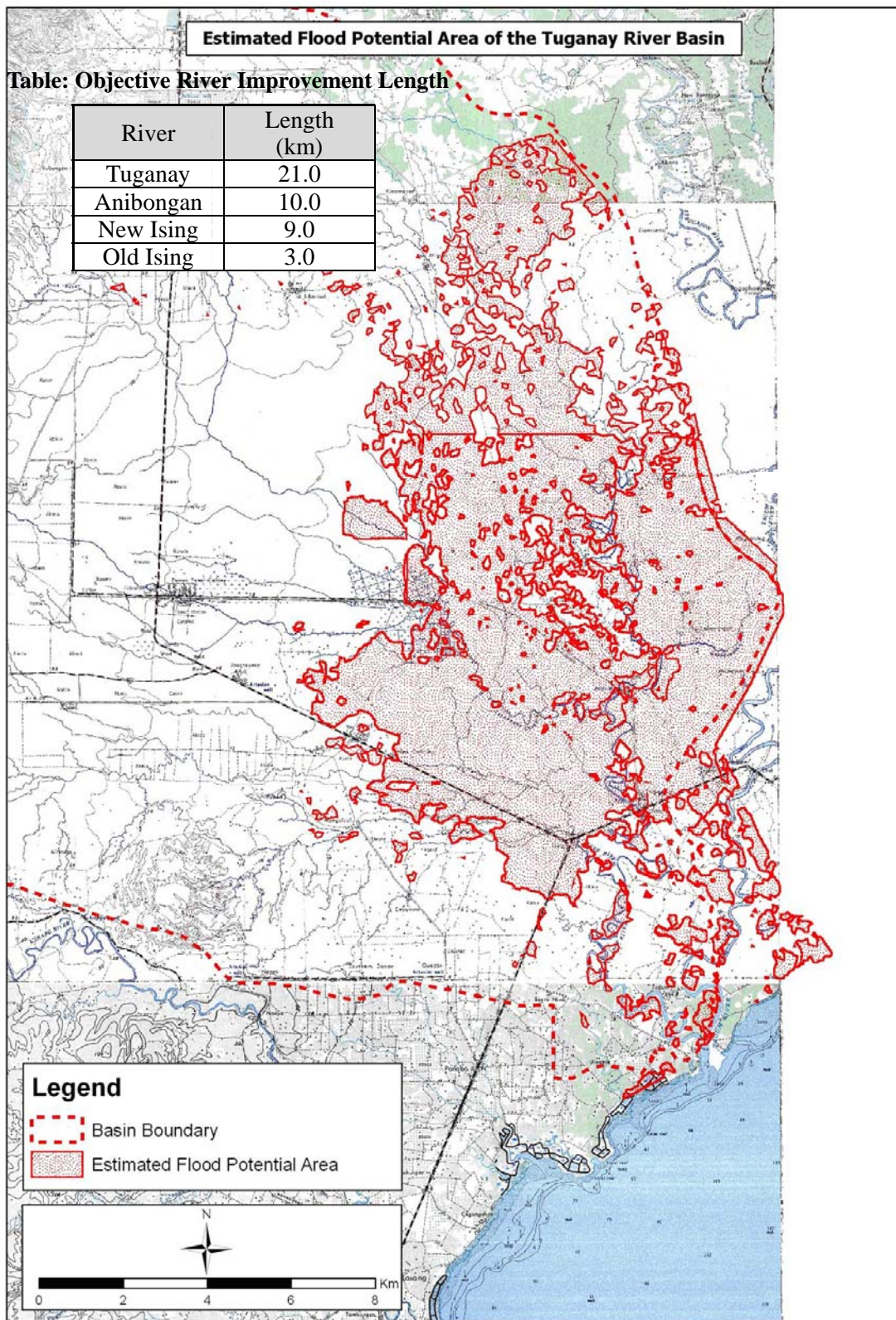


THE STUDY ON THE NATIONWIDE FLOOD RISK ASSESSMENT AND THE FLOOD MITIGATION PLAN FOR THE SELECTED AREAS IN THE REPUBLIC OF THE PHILIPPINES

JAPAN INTERNATIONAL COOPERATION AGENCY

Fig. 5-9

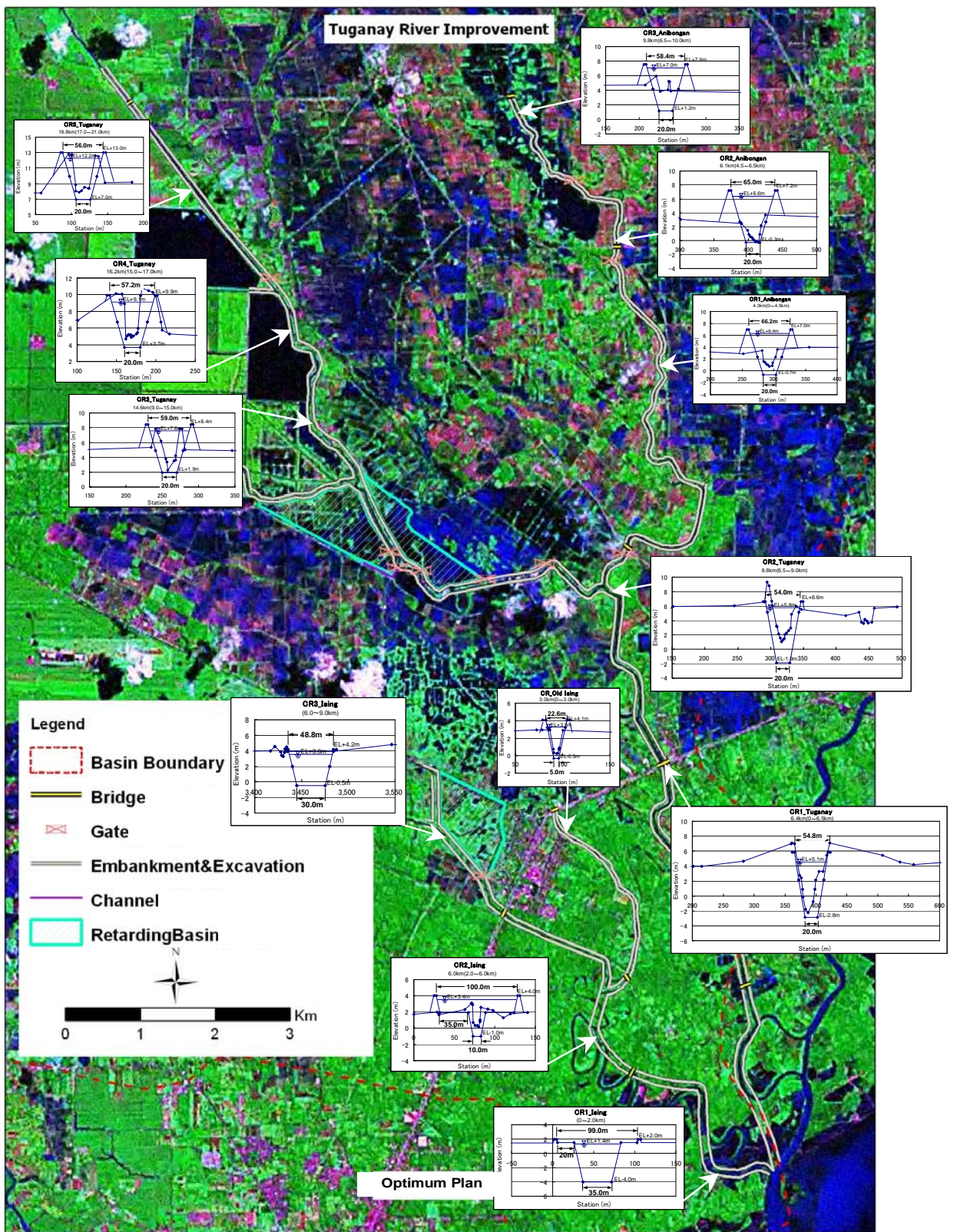
Optimum Plan (Kinanliman)



THE STUDY ON THE NATIONWIDE FLOOD RISK ASSESSMENT AND THE FLOOD MITIGATION PLAN FOR THE SELECTED AREAS IN THE REPUBLIC OF THE PHILIPPINES

Fig. 5-10
Features of River Basin (Tuganay)

JAPAN INTERNATIONAL COOPERATION AGENCY

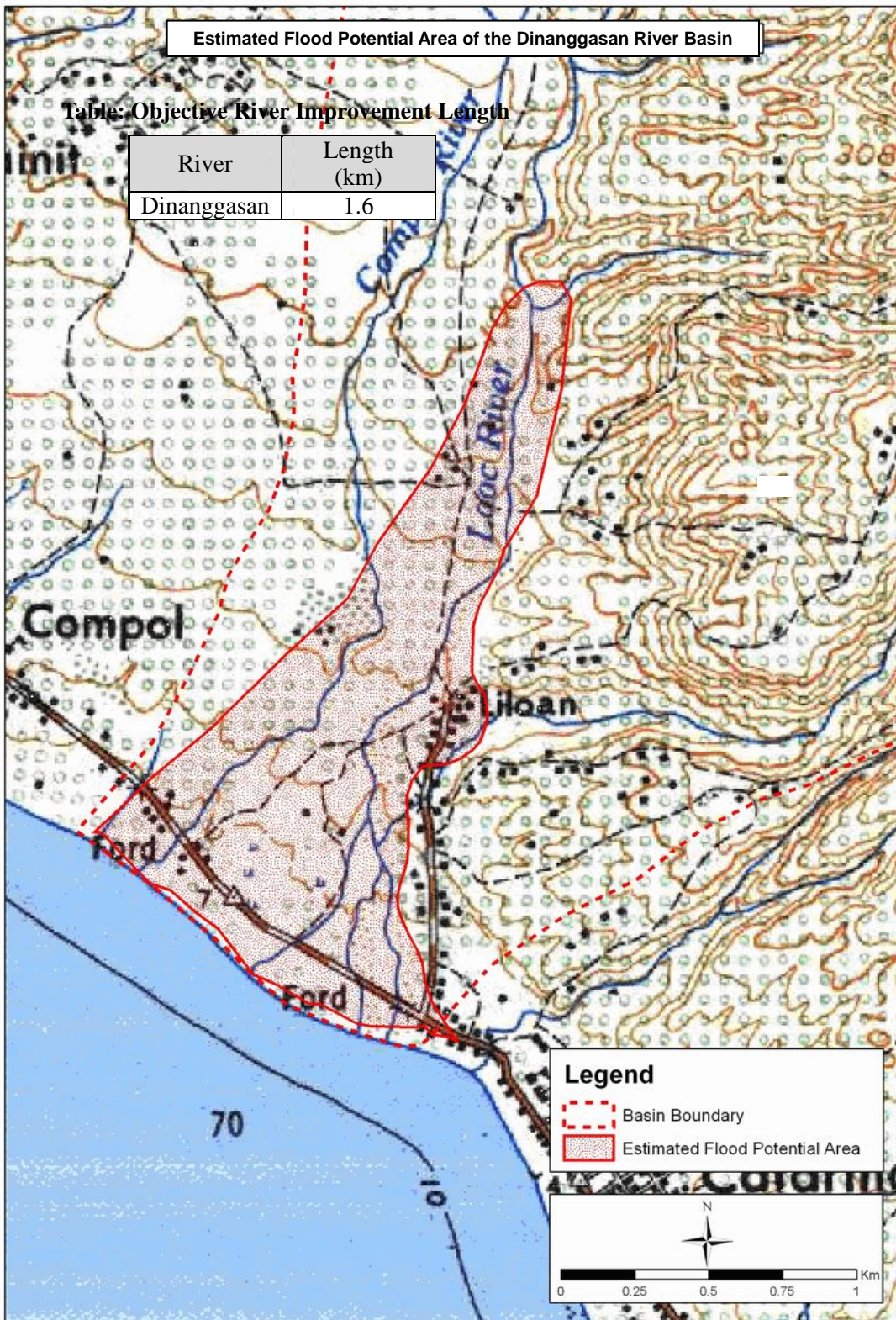


THE STUDY ON THE NATIONWIDE FLOOD RISK ASSESSMENT AND THE FLOOD MITIGATION PLAN FOR THE SELECTED AREAS IN THE REPUBLIC OF THE PHILIPPINES

JAPAN INTERNATIONAL COOPERATION AGENCY

Fig. 5-11

Optimum Plan (Tuganay)

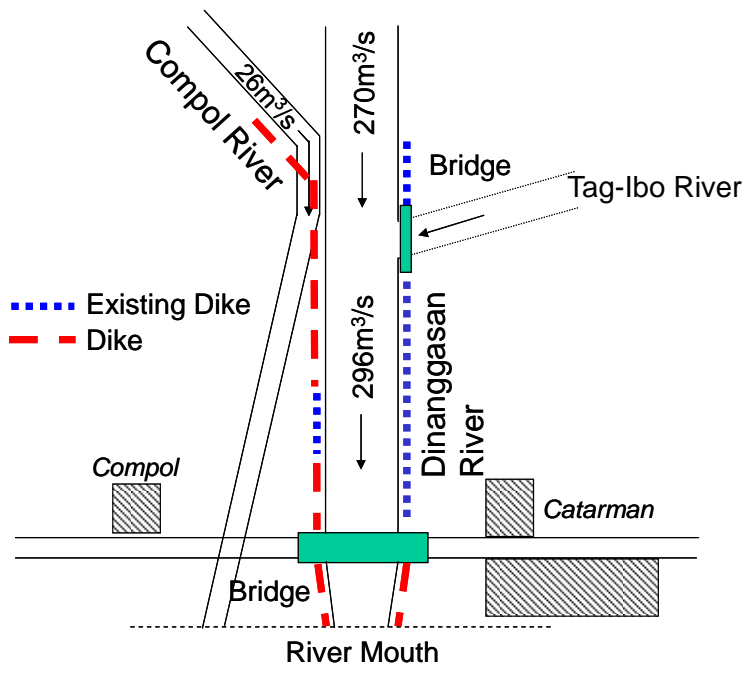


THE STUDY ON THE NATIONWIDE FLOOD RISK ASSESSMENT AND THE FLOOD MITIGATION PLAN FOR THE SELECTED AREAS IN THE REPUBLIC OF THE PHILIPPINES

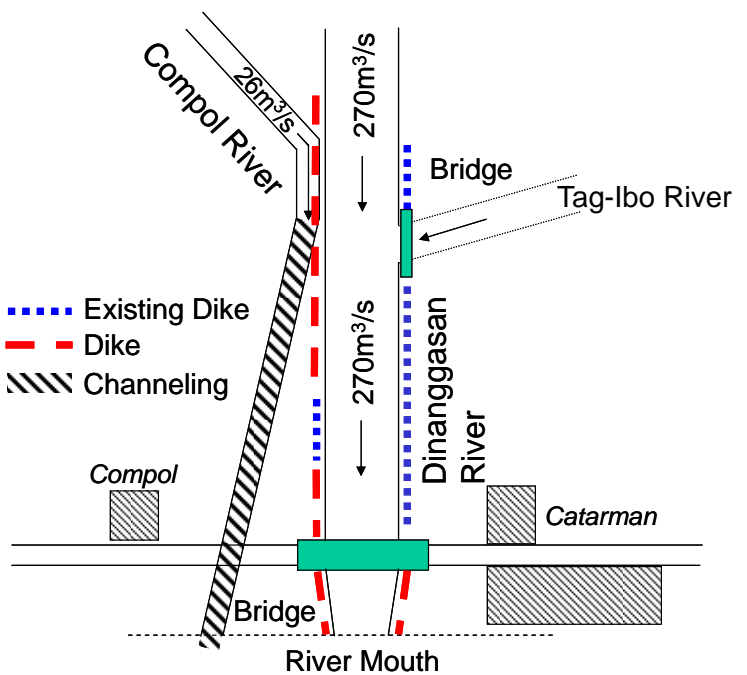
JAPAN INTERNATIONAL COOPERATION AGENCY

Fig. 5-12

Features of River Basin (Dinanggasan)



Case-1



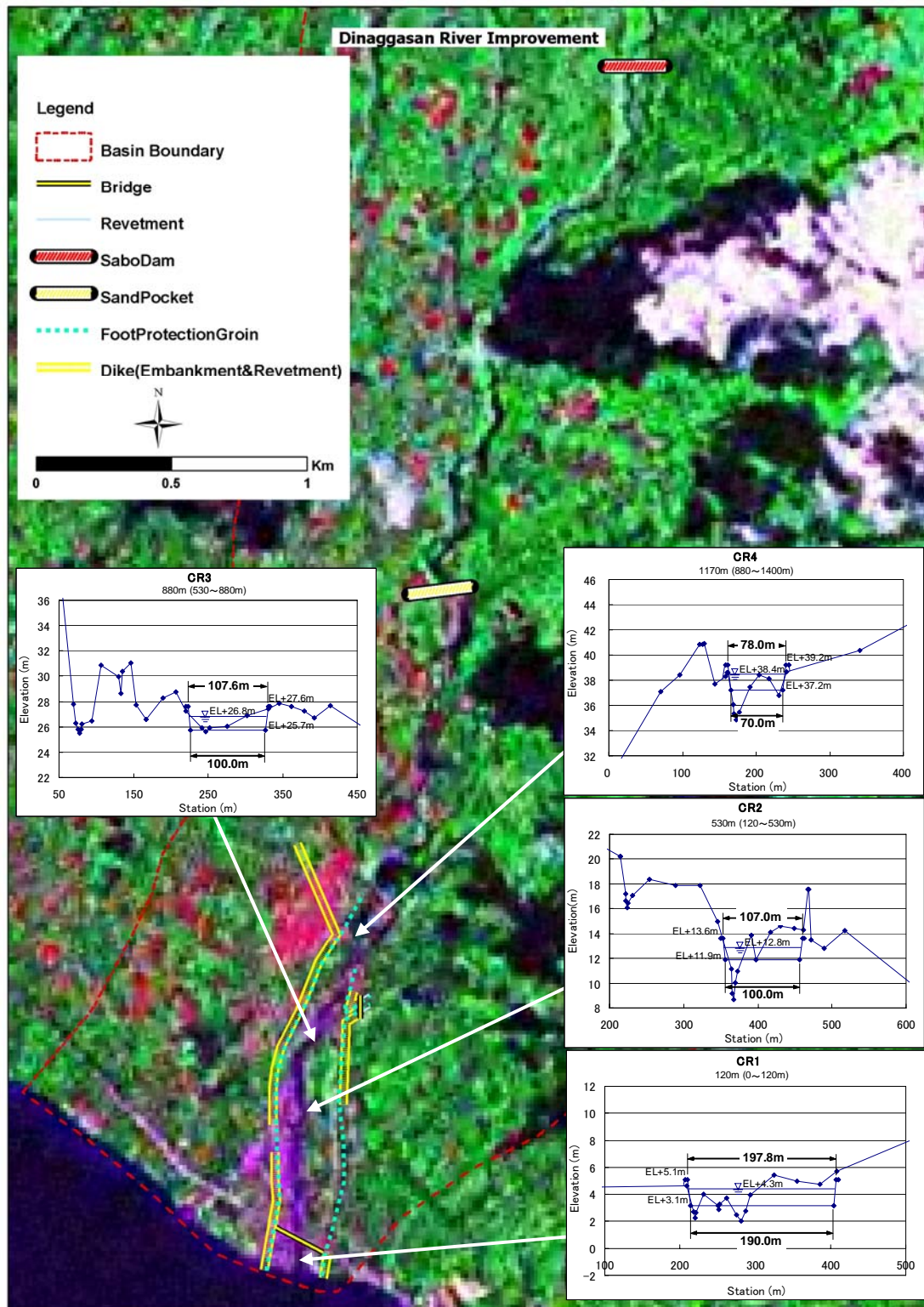
Case-2

THE STUDY ON THE NATIONWIDE FLOOD RISK ASSESSMENT AND THE FLOOD MITIGATION PLAN FOR THE SELECTED AREAS IN THE REPUBLIC OF THE PHILIPPINES

JAPAN INTERNATIONAL COOPERATION AGENCY

Fig. 5-13

Alternative Cases (Dinanggasan)



THE STUDY ON THE NATIONWIDE FLOOD RISK ASSESSMENT AND THE FLOOD MITIGATION PLAN FOR THE SELECTED AREAS IN THE REPUBLIC OF THE PHILIPPINES

JAPAN INTERNATIONAL COOPERATION AGENCY

Fig. 5-14

Optimum Plan (Dinaggasan)