



Attachment 2
Sector Improvement Plan

WATER AND SANITATION

NOVEMBER 2004

PROJECT INFORMATION SHEET



WATER AND SANITATION

NOVEMBER 2004

PROJECT INFORMATION SHEET



SUMMARY PROPOSED NEW PROJECT FOR WATER SUPPLY AND SANITATION SECTOR

Title of Project	Responsibility
Rural Water Supply and Sanitation Access-Phase I	MTC & PW
Rural Water Supply and Sanitation Access – Phase II	MTC & PW
Dili Sewerage / Drainage Improvements	MTC & PW
District-Main Towns Sewerage Improvements	MTC & PW
Tibar Solid Waste Disposal Site Improvement	MTC & PW
Urban Water Demand Management Review	MTC&PW
Review of Water Sanitation Strategies and Policy Issues	MTC&PW
Dili Urban Water Supply Headwork and Transmission	MTC&PW
Dili Urban Water Supply Distribution	MTC&PW
District Main Towns Urban Water Supplies	MTC&PW

- MTC&PW: Ministry of Transportation, Communication and Public Works



Attachment 3

Schematic Drawing of Dili Water Supply

Code	Description
WT-1	Water Treatment Plant
WT-2	Water Treatment Plant
WT-3	Water Treatment Plant
WT-4	Water Treatment Plant
WT-5	Water Treatment Plant
WT-6	Water Treatment Plant
WT-7	Water Treatment Plant
WT-8	Water Treatment Plant
WT-9	Water Treatment Plant
WT-10	Water Treatment Plant

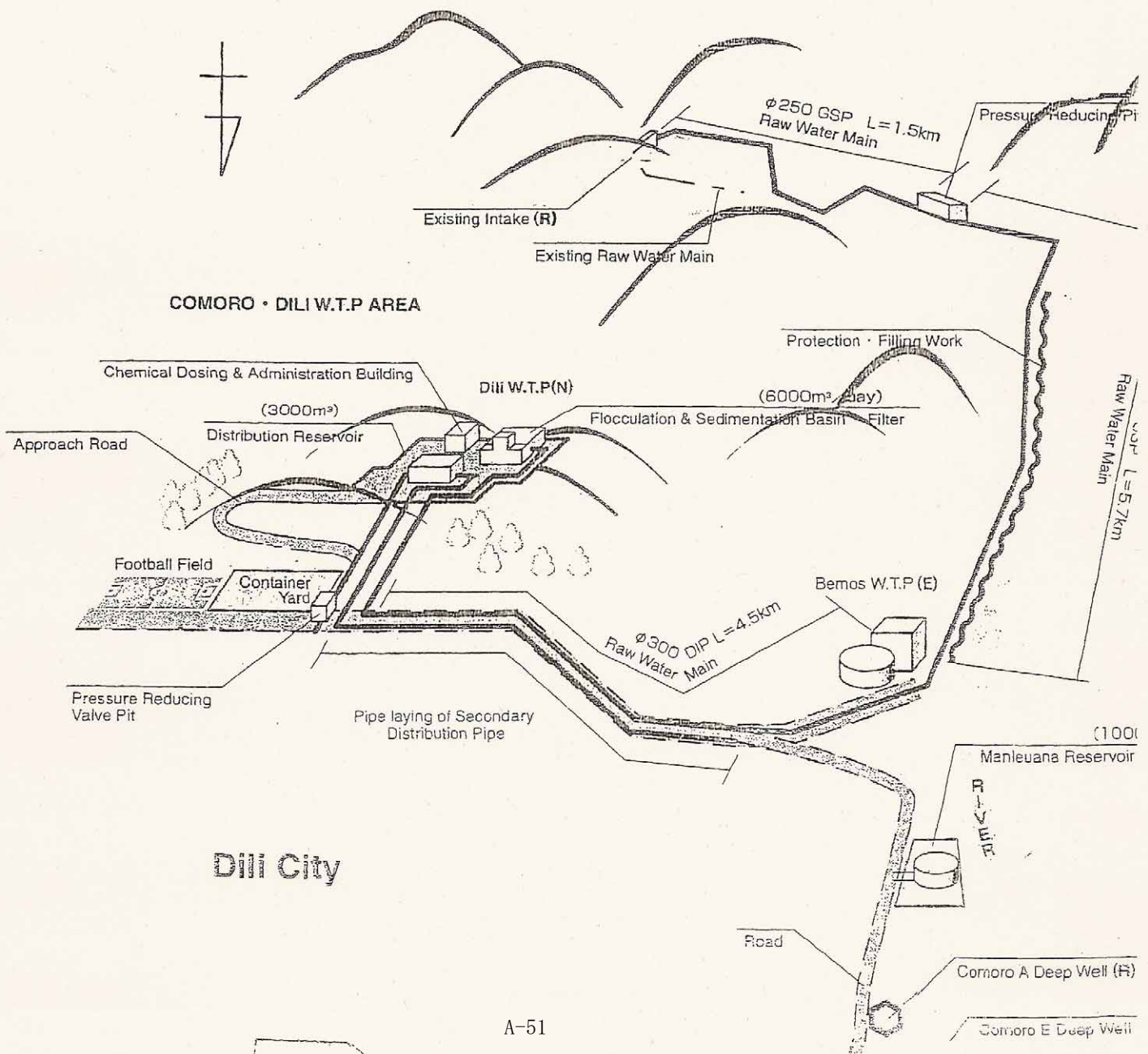
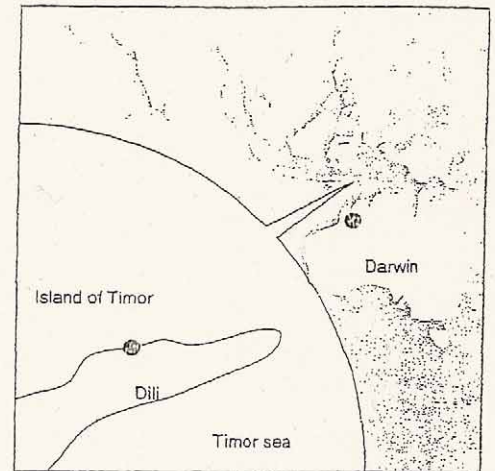
Particulars of the Works

- 1) Raw Water Main Works
- 2) Water Treatment Plant Works
- 3) Service Reservoir Works
- 4) Rising & Distribution Main Works
- 5) Deep Well Upgrade Works
- 6) Approach Road to Water Treatment Plant and Reservoir
- 7) Power Line to Water Treatment Plant

Construction Period

4th December 2001 to 31st July, 2003

Location of EAST TIMOR



Attachment 4

Temperature and Rainfall Data for 2004.

2004 Temperature and Rainfall Data (For Dili, Timor Leste)

	Average Temperature	Total Rainfall (mm)
Jan	29.0	37.7
Feb	28.3	518.3
Mar	28.1	181.3
Apr	28.7	85.3
May	28.3	155.5
Jun	27.4	11.3
Jul	27.2	15.7
Aug	27.3	0.0
Sep	28.7	0.0
Oct	29.3	28.0
Nov	28.4	22.7
Dec	28.4	134.8

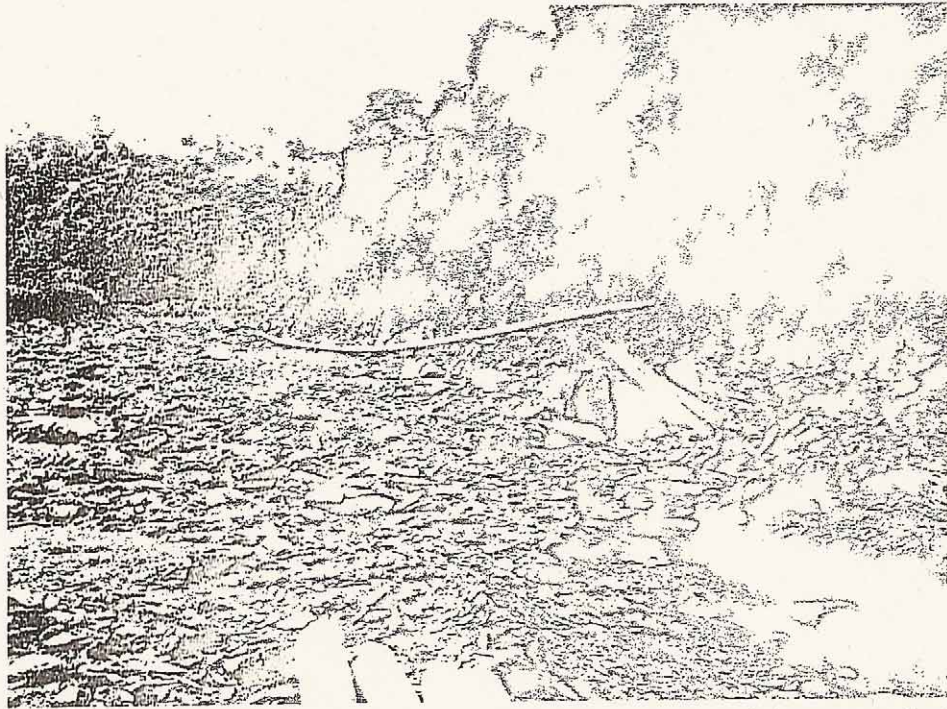
	Average High Temperature	Average Low Temperature
Jan	32.5	25.5
Feb	31.5	25.0
Mar	31.8	24.4
Apr	32.7	24.6
May	32.2	24.3
Jun	31.8	23.0
Jul	31.9	22.5
Aug	29.9	24.7
Sep	32.1	25.2
Oct	32.8	25.8
Nov	31.7	25.0
Dec	32.5	24.3

Attachment 5

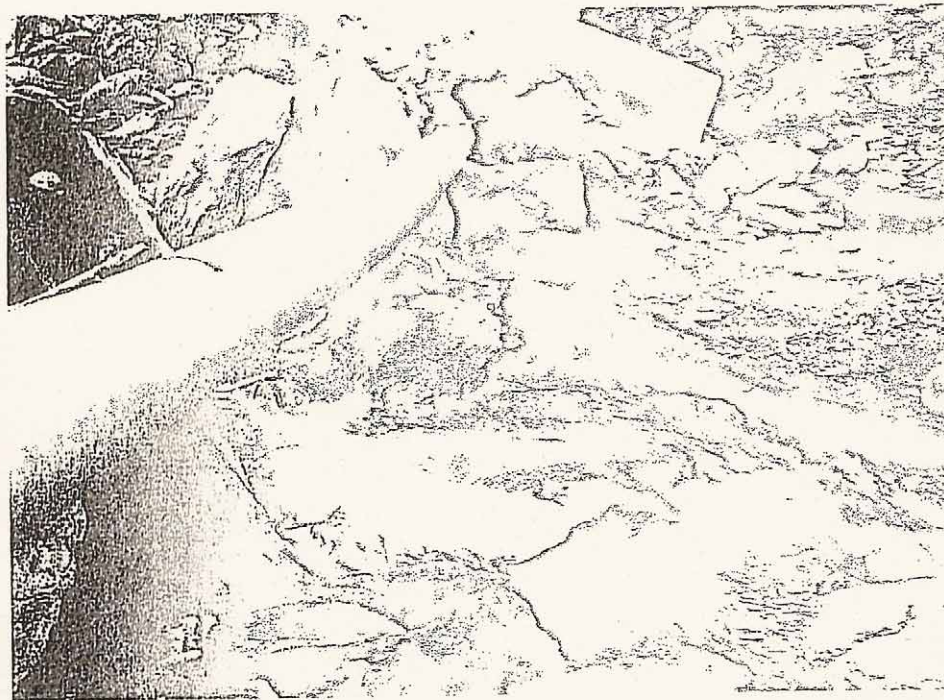
Site Photographs

Month	Average Temperature (F)	Relative Humidity (%)
Jan	32.1	75.1
Feb	35.2	78.2
Mar	38.3	81.3
Apr	41.4	84.4
May	44.5	87.5
Jun	47.6	90.6
Jul	50.7	93.7
Aug	53.8	96.8
Sep	56.9	99.9
Oct	60.0	103.0
Nov	63.1	106.1
Dec	66.2	109.2

Month	Average High Temperature (F)	Average Low Temperature (F)
Jan	35.0	29.0
Feb	38.0	32.0
Mar	41.0	35.0
Apr	44.0	38.0
May	47.0	41.0
Jun	50.0	44.0
Jul	53.0	47.0
Aug	56.0	50.0
Sep	59.0	53.0
Oct	62.0	56.0
Nov	65.0	59.0
Dec	68.0	62.0



The water supply pipeline has become exposed due to erosion of the stream bed.



The forces of nature have pushed rocks up against the water pipeline.

