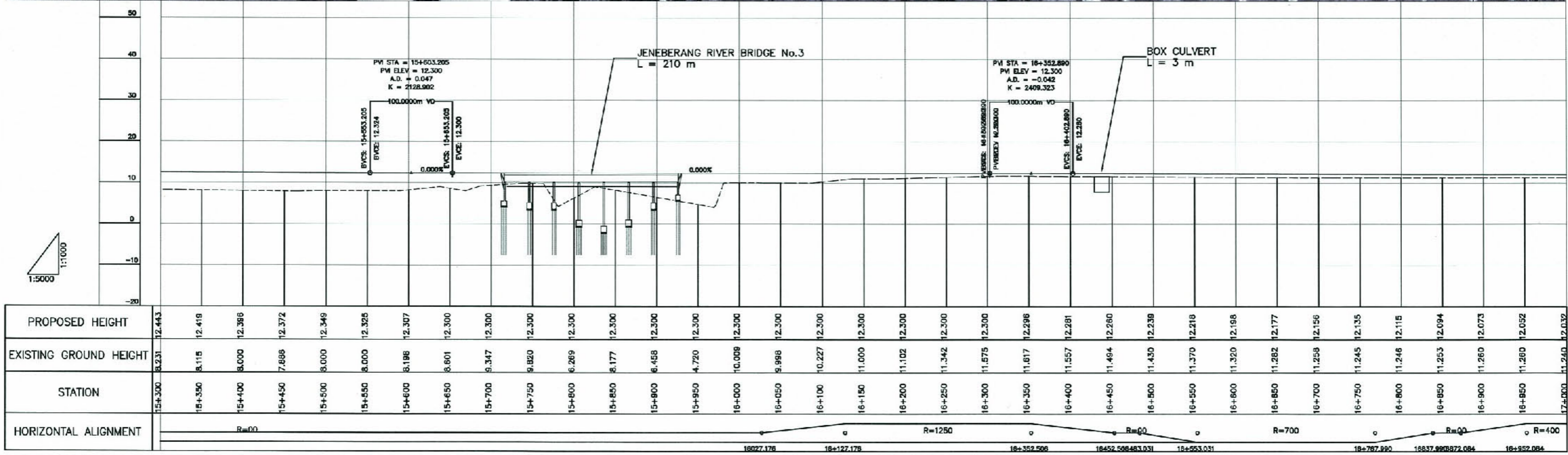
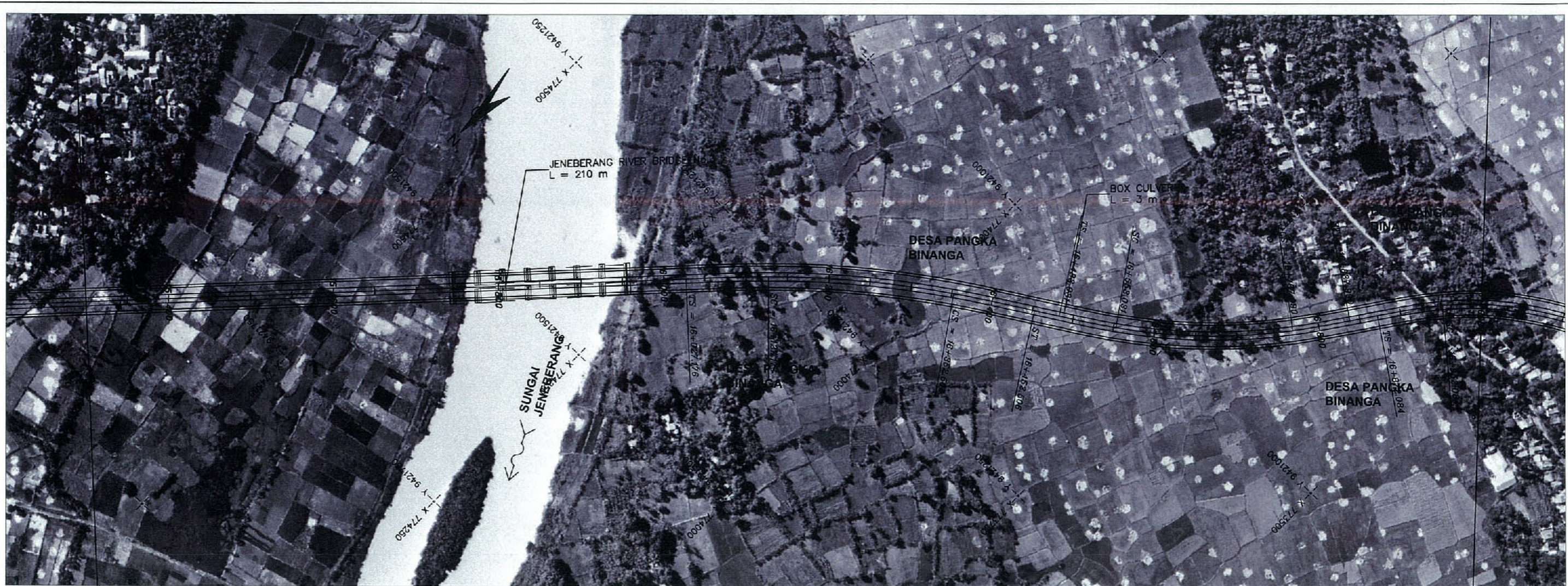
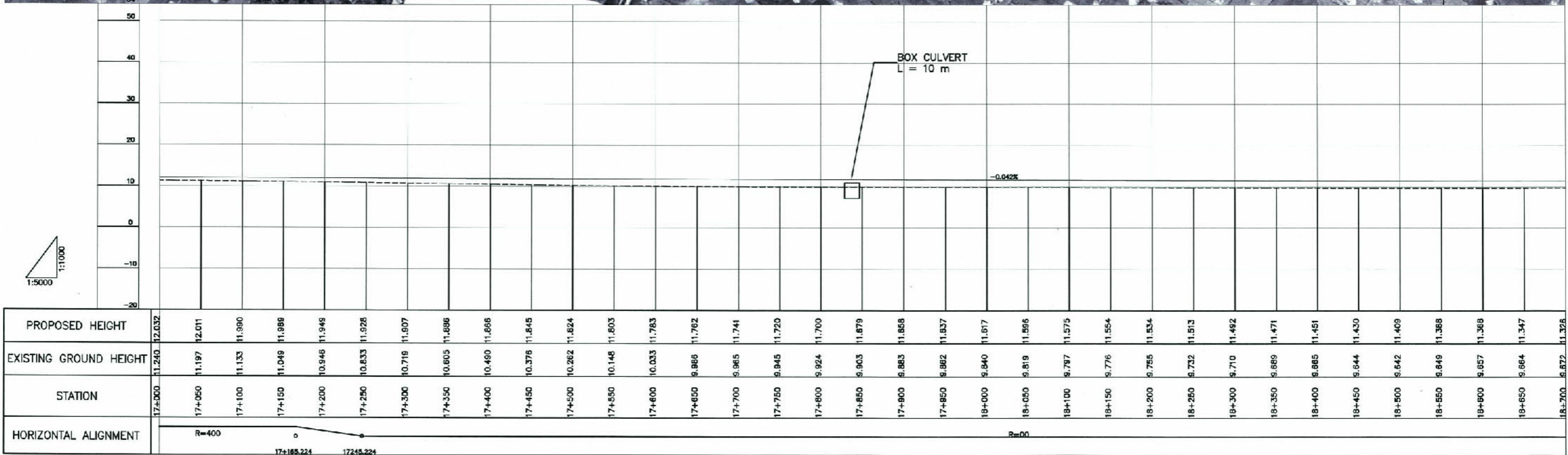
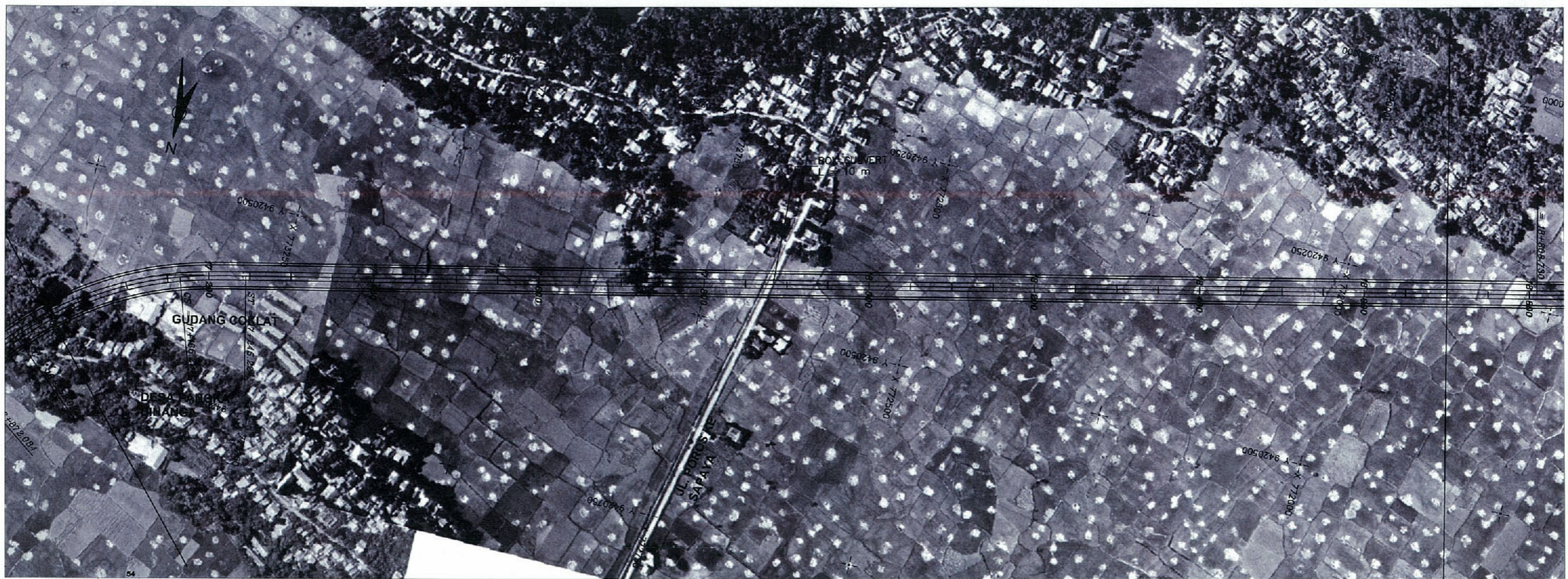


	PROJECT TITLE:	ROAD NAME TITLE:	DRAWING NO.
	THE STUDY ON ARTERIAL ROAD NETWORK DEVELOPMENT PLAN FOR SULAWESI ISLAND AND FEASIBILITY STUDY ON PRIORITY ARTERIAL ROAD IN SOUTH SULAWESI PROVINCE IN INDONESIA	OUTER RING ROAD	PP-09
		PLAN AND PROFILE	DATE: MARCH 2008
	SCALE =	1 / 5,000 H, 1/1,000 V	





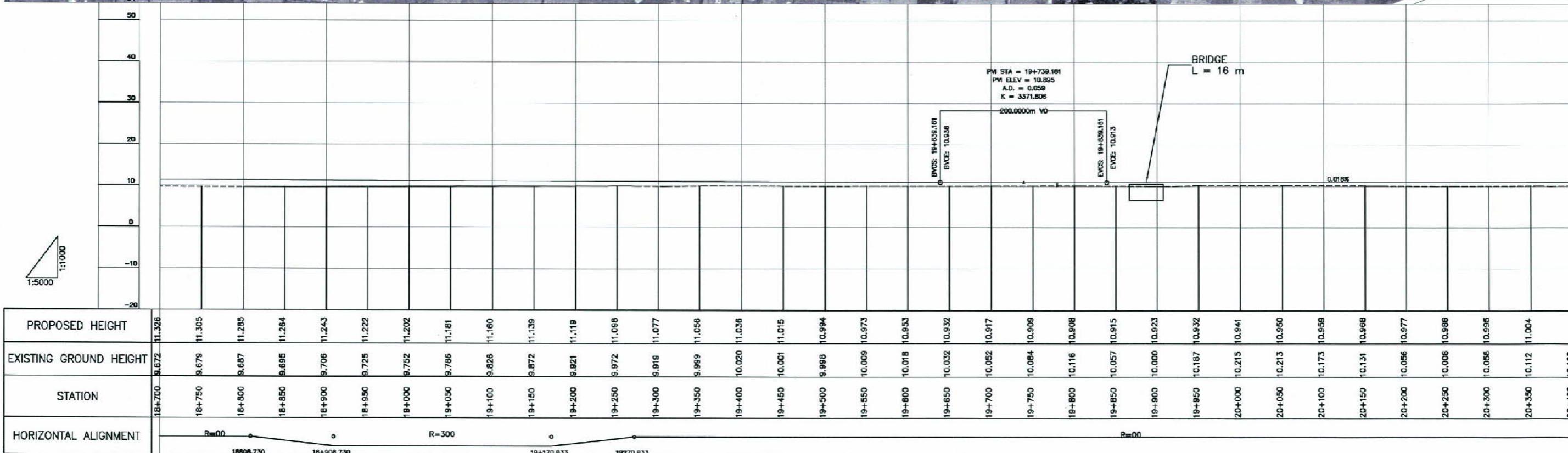
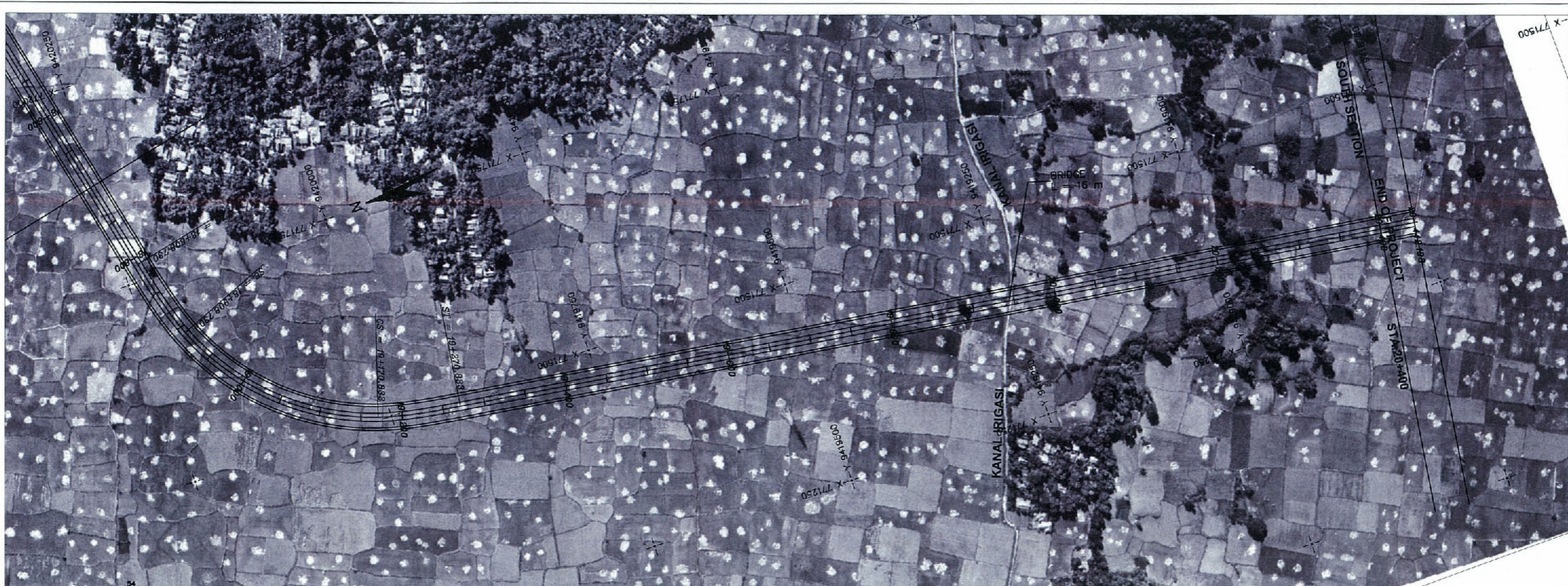
JICA JAPAN INTERNATIONAL COOPERATION AGENCY

NIPPON KOEI CO., LTD. JOINT VENTURE WITH **KRI** INTERNATIONAL Corporation **ALMEC** ALMEC Corporation

PROJECT TITLE:
THE STUDY ON ARTERIAL ROAD NETWORK DEVELOPMENT PLAN FOR SULAWESI ISLAND AND
FEASIBILITY STUDY ON PRIORITY ARTERIAL ROAD IN SOUTH SULAWESI PROVINCE IN INDONESIA

ROAD NAME TITLE : OUTER RING ROAD
DRAWING TITLE : PLAN AND PROFILE
SCALE = 1 / 5,000 H, 1/1,000 V

DRAWING NO. PP-11
DATE: MARCH 2008



	PROJECT TITLE:	ROAD NAME TITLE :	DRAWING NO.
	THE STUDY ON ARTERIAL ROAD NETWORK DEVELOPMENT PLAN FOR SULAWESI ISLAND AND FEASIBILITY STUDY ON PRIORITY ARTERIAL ROAD IN SOUTH SULAWESI PROVINCE IN INDONESIA	OUTER RING ROAD	PP-12
		PLAN AND PROFILE	DATE: MARCH 2008
		SCALE =	1 / 5,000 H, 1/1,000 V