

JICA JAPAN INTERNATIONAL COOPERATION AGENCY

NIPPON KOEI CO., LTD. IN JOINT VENTURE WITH **KRI** INTERNATIONAL Corporation **ALMEC** ALMEC Corporation

PROJECT TITLE:
 THE STUDY ON ARTERIAL ROAD NETWORK DEVELOPMENT PLAN FOR SULAWESI ISLAND AND
 FEASIBILITY STUDY ON PRIORITY ARTERIAL ROAD IN SOUTH SULAWESI PROVINCE IN INDONESIA

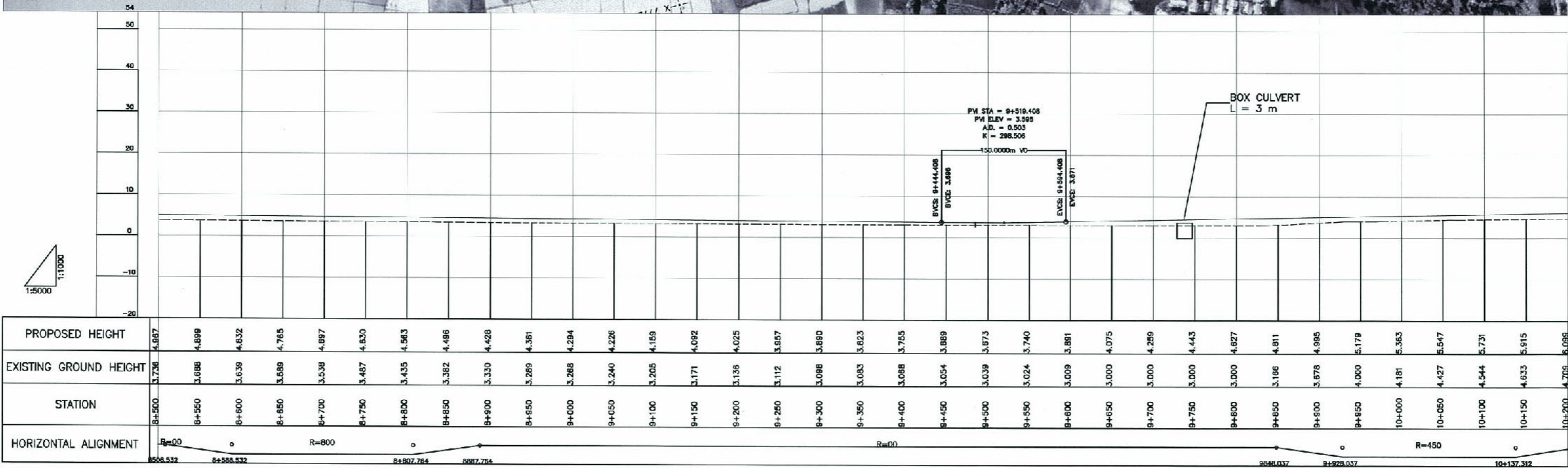
ROAD NAME TITLE : OUTER RING ROAD

DRAWING TITLE : PLAN AND PROFILE

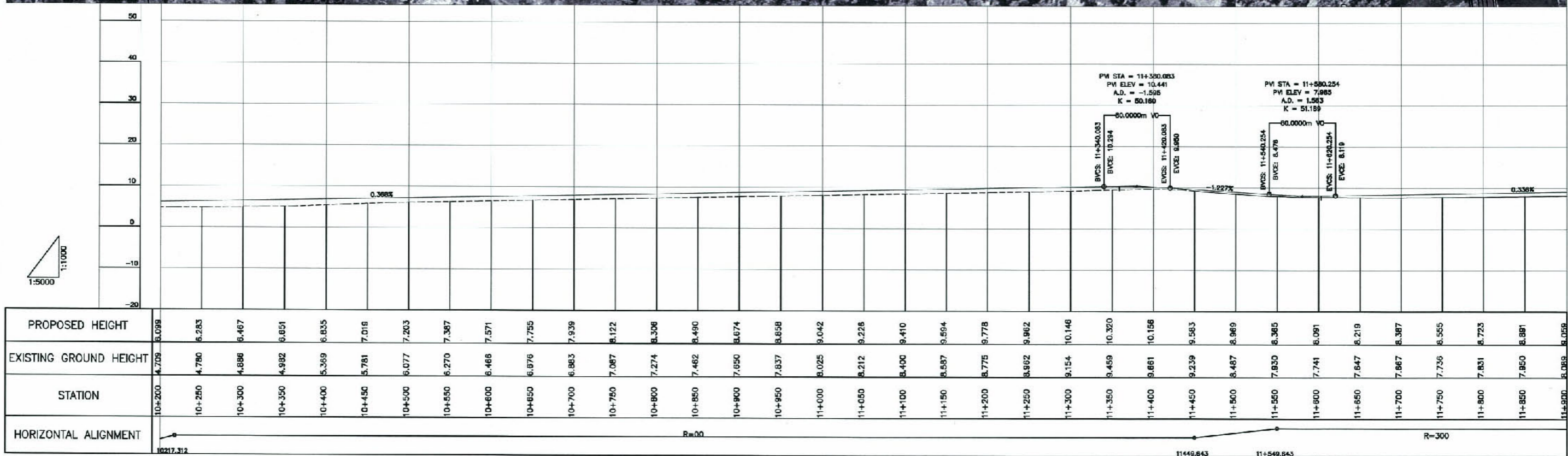
SCALE = 1 / 5,000 H, 1/1,000 V

DRAWING NO. PP-05

DATE: MARCH 2008



	PROJECT TITLE: THE STUDY ON ARTERIAL ROAD NETWORK DEVELOPMENT PLAN FOR SULAWESI ISLAND AND FEASIBILITY STUDY ON PRIORITY ARTERIAL ROAD IN SOUTH SULAWESI PROVINCE IN INDONESIA	ROAD NAME TITLE : OUTER RING ROAD	DRAWING NO.: PP-06
	DRAWING TITLE : PLAN AND PROFILE	SCALE = 1 / 5,000 H, 1/1,000 V	DATE: MARCH 2008
	DATE: MARCH 2008		

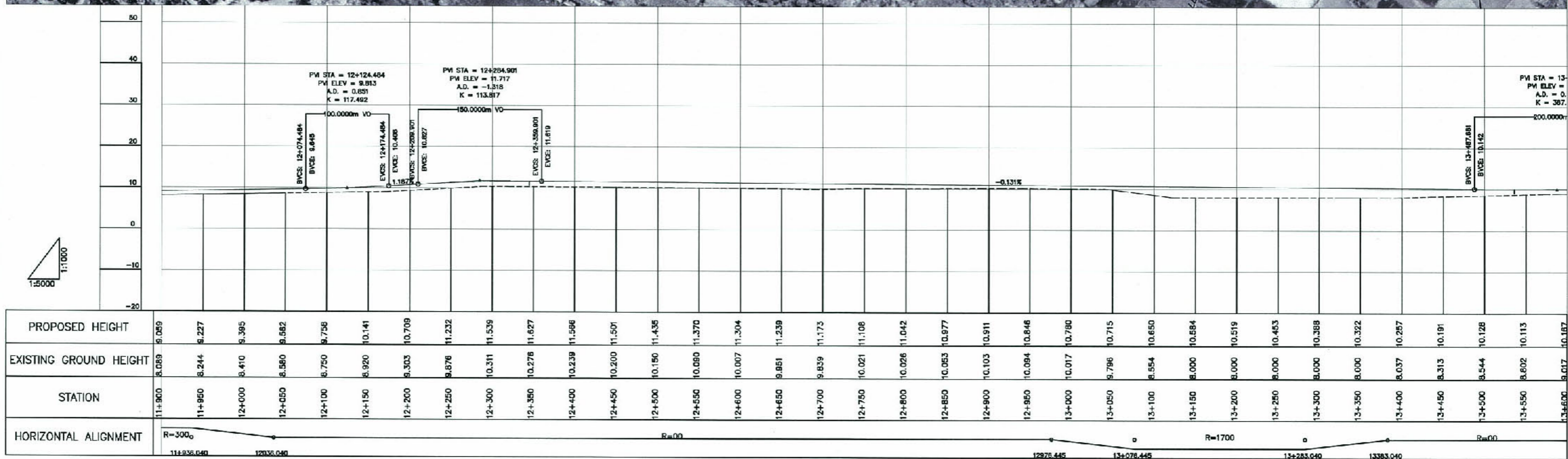


JICA JAPAN INTERNATIONAL COOPERATION AGENCY
 NIPPON KOEI CO., LTD. JOINT VENTURE WITH KRI INTERNATIONAL Corporation ALMEC ALMEC Corporation

PROJECT TITLE:
 THE STUDY ON ARTERIAL ROAD NETWORK DEVELOPMENT PLAN FOR SULAWESI ISLAND AND
 FEASIBILITY STUDY ON PRIORITY ARTERIAL ROAD IN SOUTH SULAWESI PROVINCE IN INDONESIA

ROAD NAME TITLE : OUTER RING ROAD
 DRAWING TITLE : PLAN AND PROFILE
 SCALE = 1 / 5,000 H, 1/1,000 V

DRAWING NO. PP-07
 DATE: MARCH 2008



	PROJECT TITLE:	ROAD NAME TITLE :	DRAWING NO.
	THE STUDY ON ARTERIAL ROAD NETWORK DEVELOPMENT PLAN FOR SULAWESI ISLAND AND FEASIBILITY STUDY ON PRIORITY ARTERIAL ROAD IN SOUTH SULAWESI PROVINCE IN INDONESIA	OUTER RING ROAD	PP-08
		SCALE =	DATE: MARCH 2008