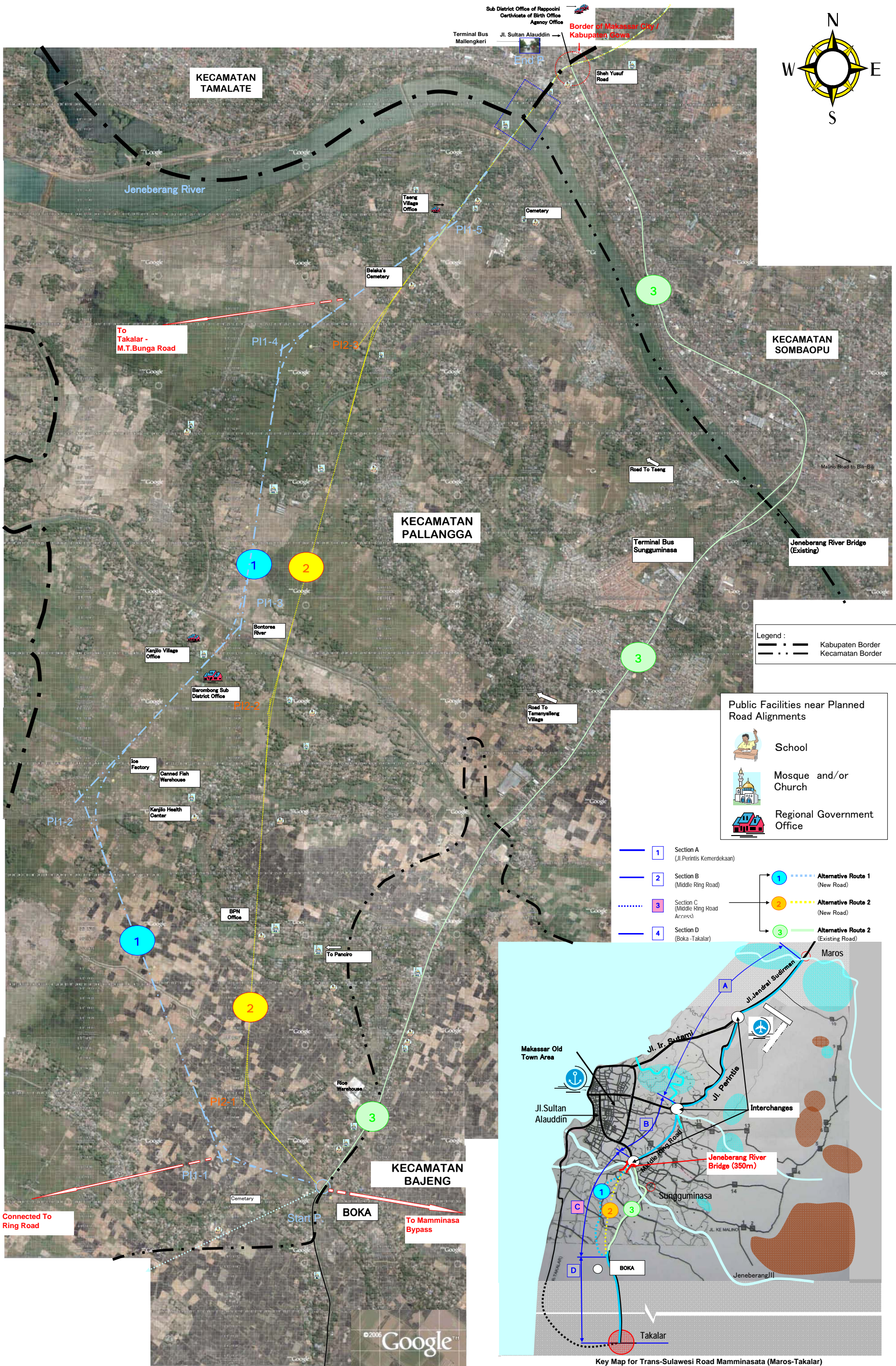
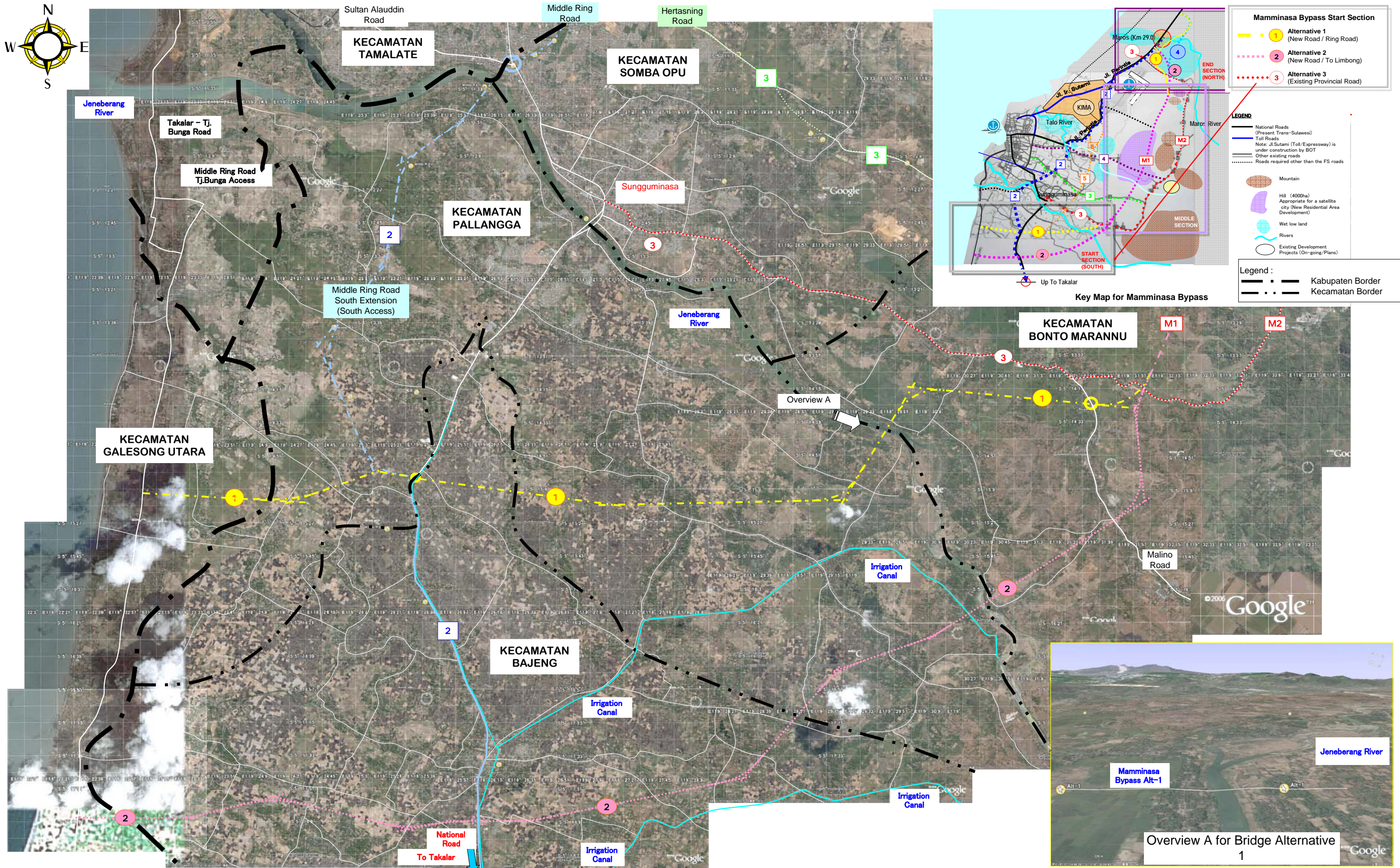
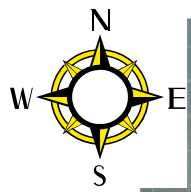


***APPENDIX-A***

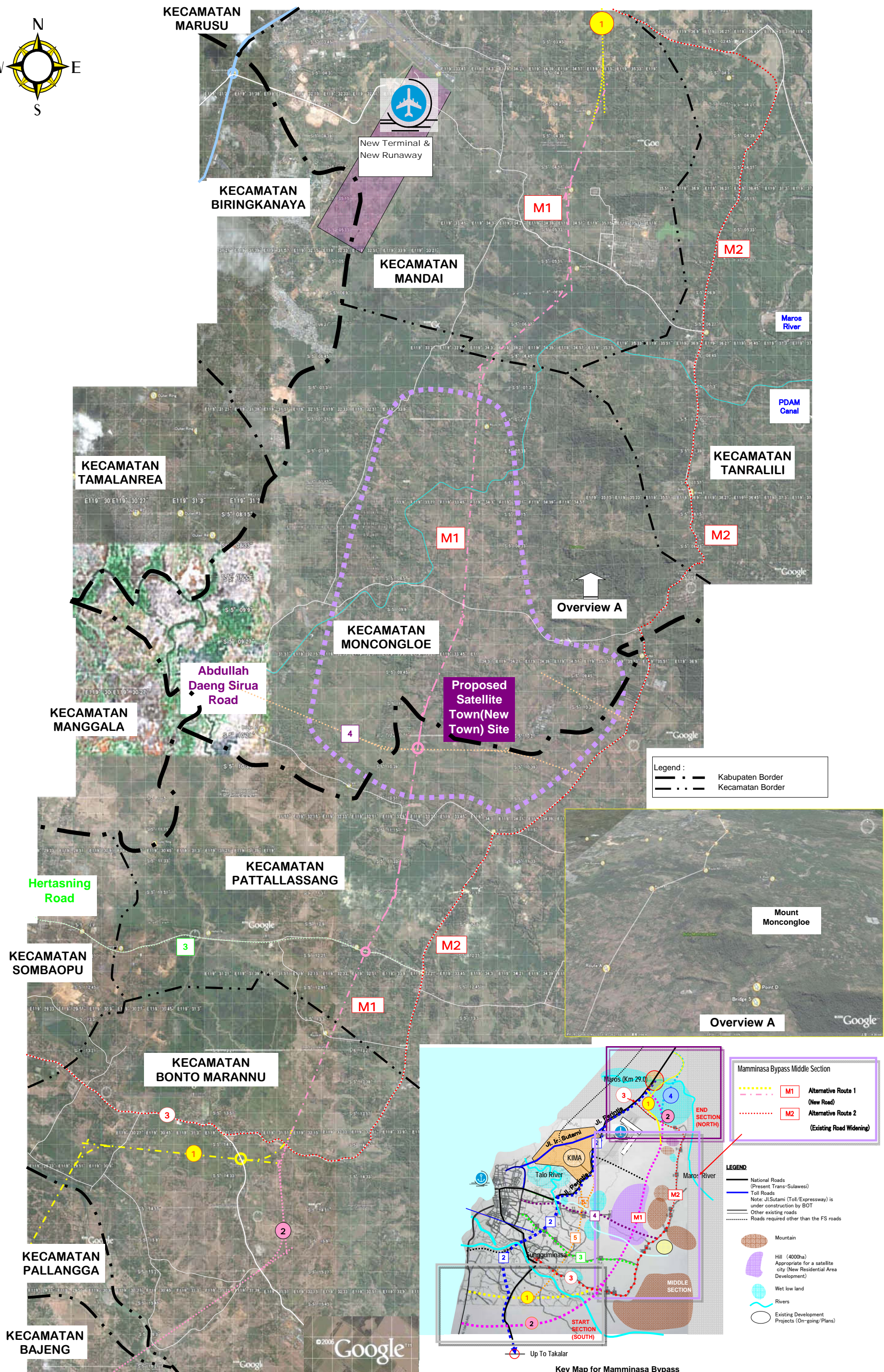
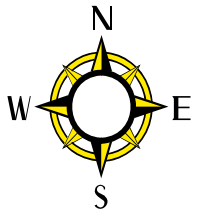
***ALTERNATIVE ROUTE STUDY MAPS FOR THE F/S ROADS***



Attachment 1 Alternative Route Study for Trans-Sulawesi Road Mamminasata Section, C-Section



Attachment 2 Alternative Routes Mamminasa Bypass Start (South) Section



Legend :  
 - - - Kabupaten Border  
 - - - Kecamatan Border

Mamminasata Bypass Middle Section  
 - - - M1 Alternative Route 1 (New Road)  
 - - - M2 Alternative Route 2 (Existing Road Widening)

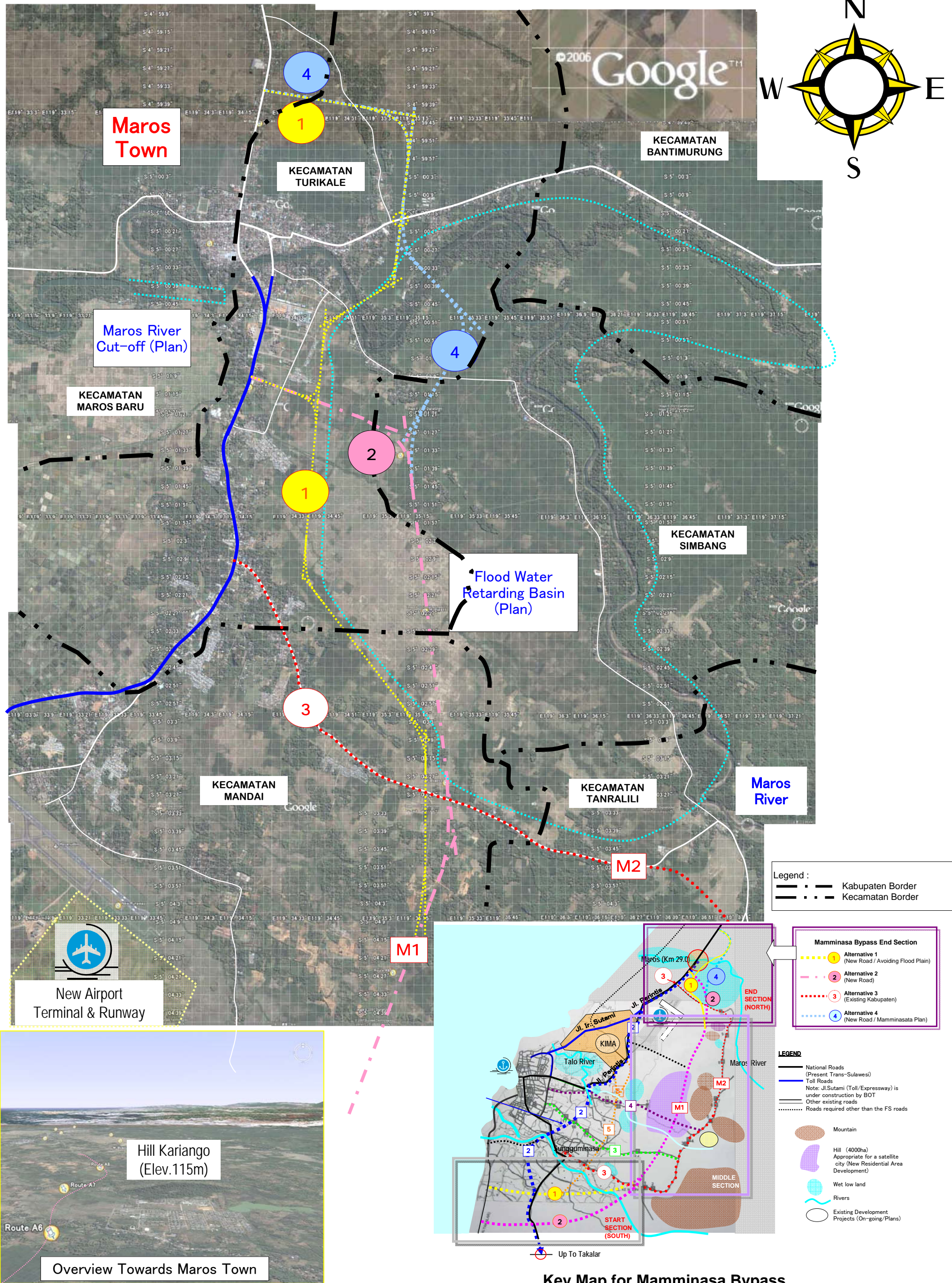
LEGEND  
 - National Roads (Present Trans-Sulawesi)  
 - Toll Roads  
 - Note: Jl.Sutami (Toll/Expressway) is under construction by BOT  
 - Other existing roads  
 - Roads required other than the FS roads

Mountain  
 Hill (4000ha) Appropriate for a satellite city (New Residential Area Development)  
 Wet low land  
 Rivers  
 Existing Development Projects (On-going/Plans)

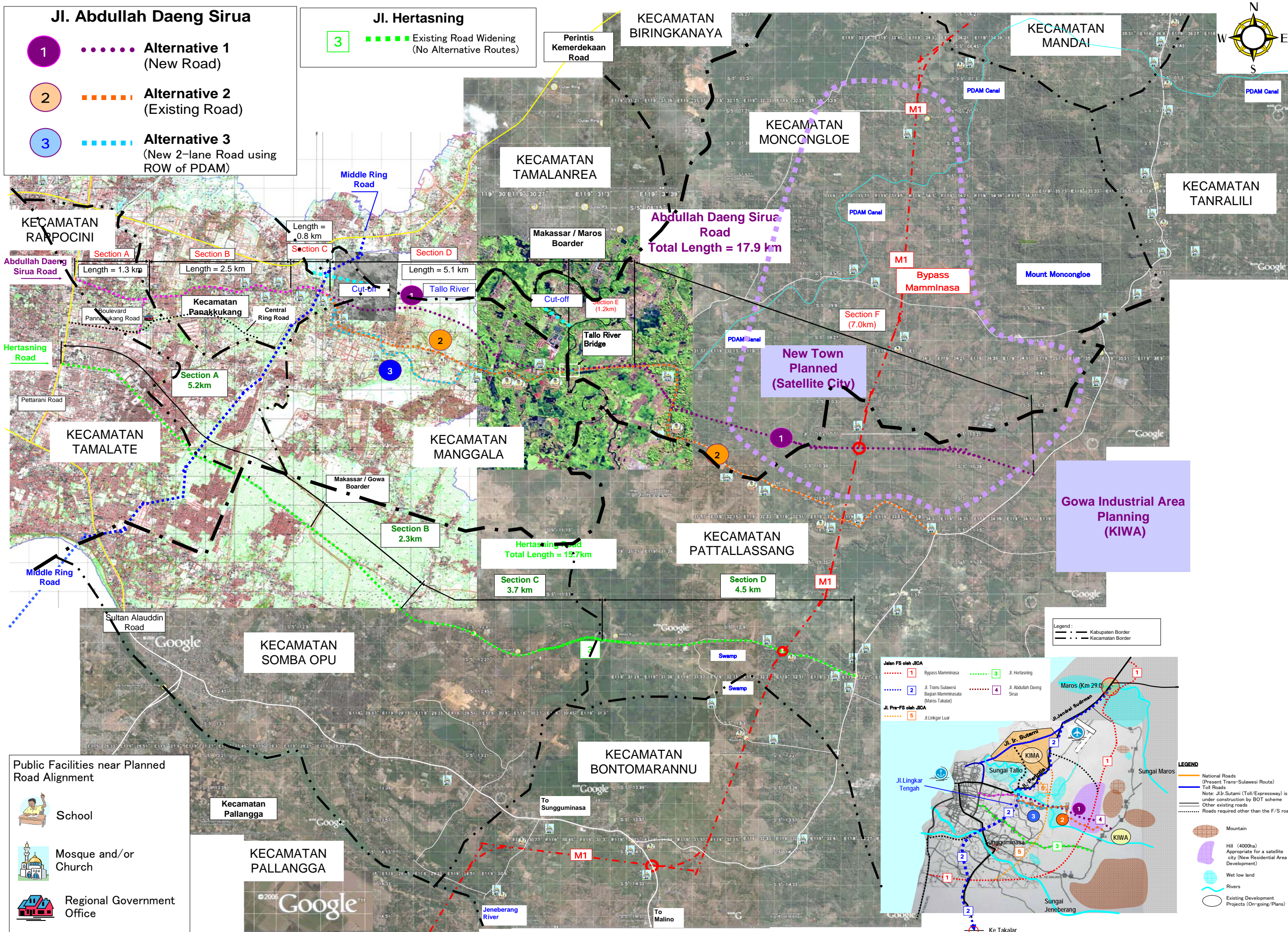


Key Map for Mamminasata Bypass

Attachment 3 Alternative Routes for Mamminasata Bypass Middle Section



Attachment 4 Alternative Routes for Mamminasa Bypass End (North) Section

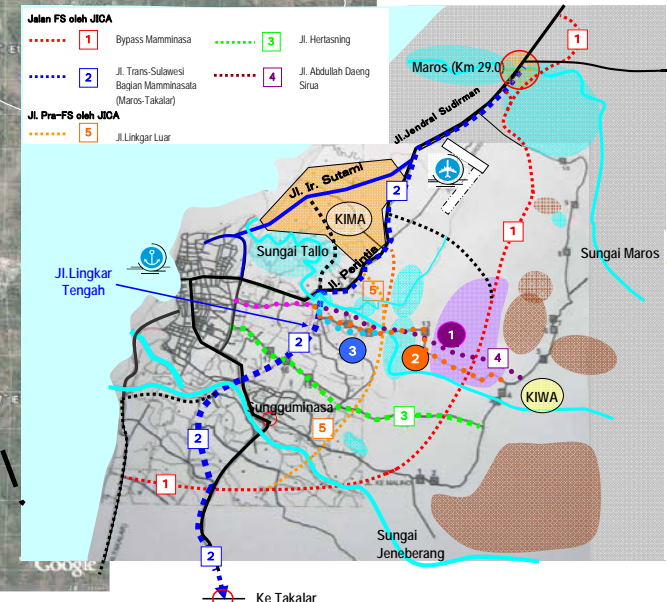
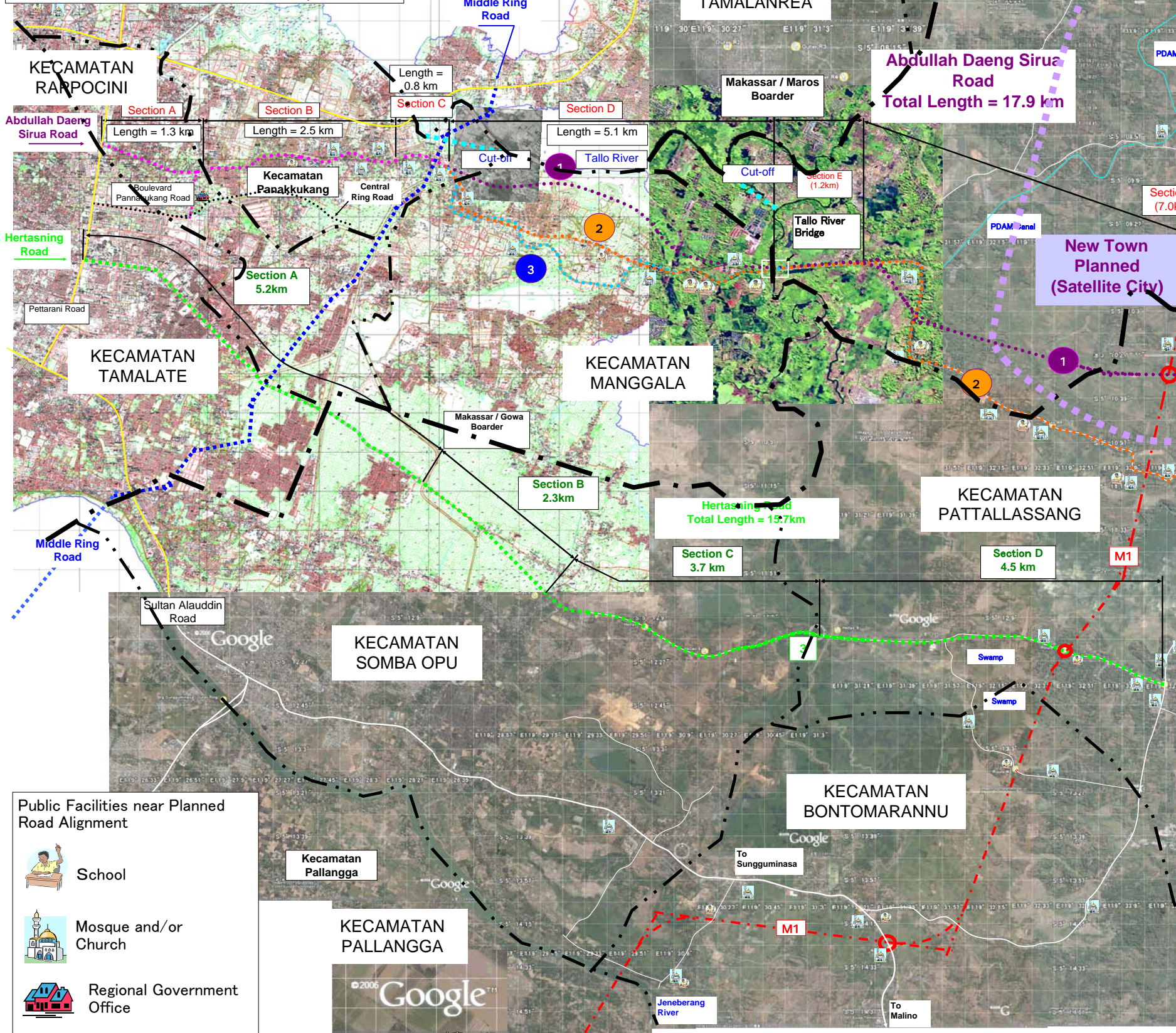


### Jl. Abdullah Daeng Sirua

- 1** Alternative 1 (New Road)
- 2** Alternative 2 (Existing Road)
- 3** Alternative 3 (New 2-lane Road using ROW of PDAM)

### Jl. Hertasning

- 3** Existing Road Widening (No Alternative Routes)



### Public Facilities near Planned Road Alignment

- School
- Mosque and/or Church
- Regional Government Office

Attachment 5 Alternative Routes Abdullah Daeng Sirua Road