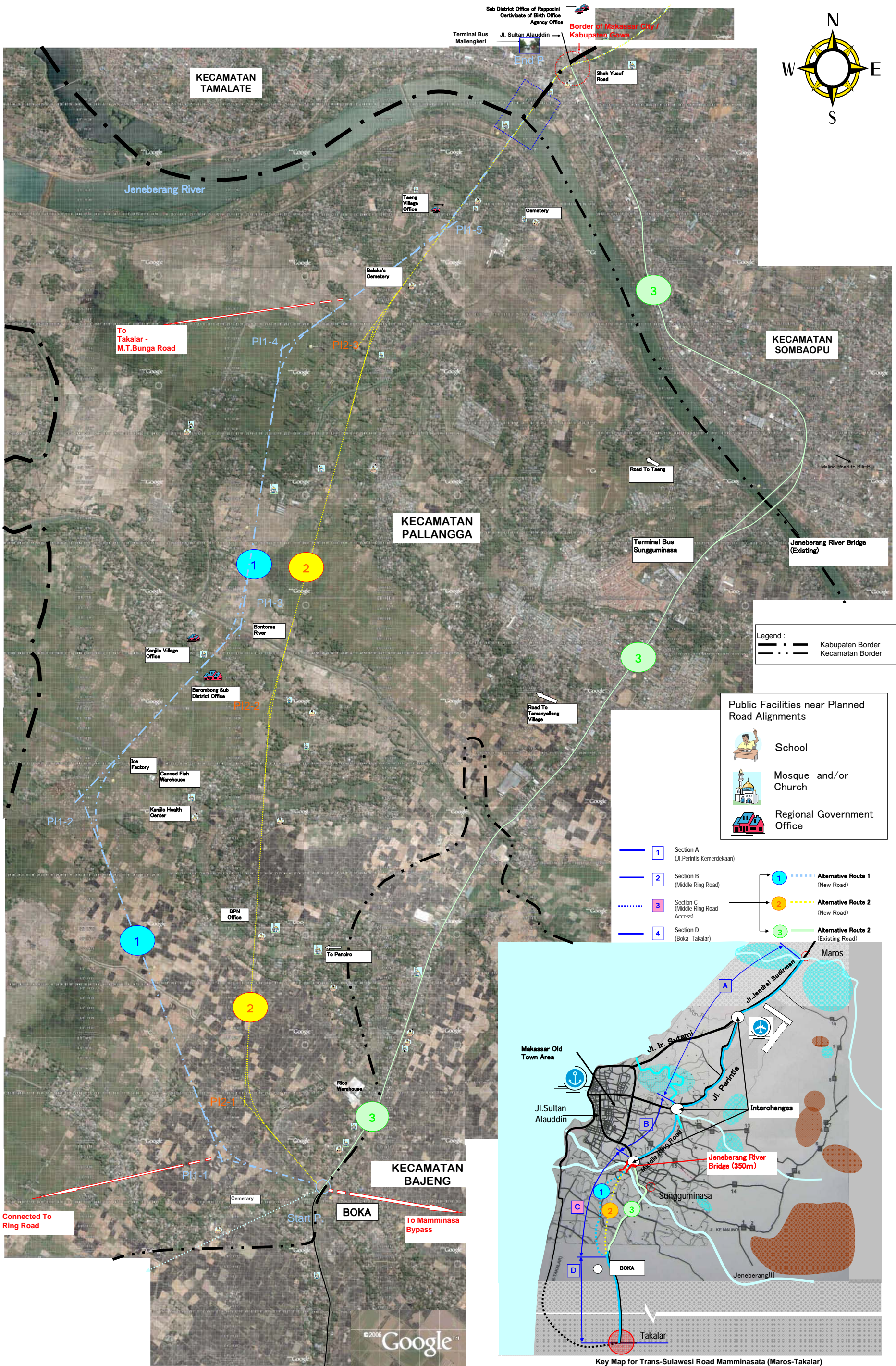
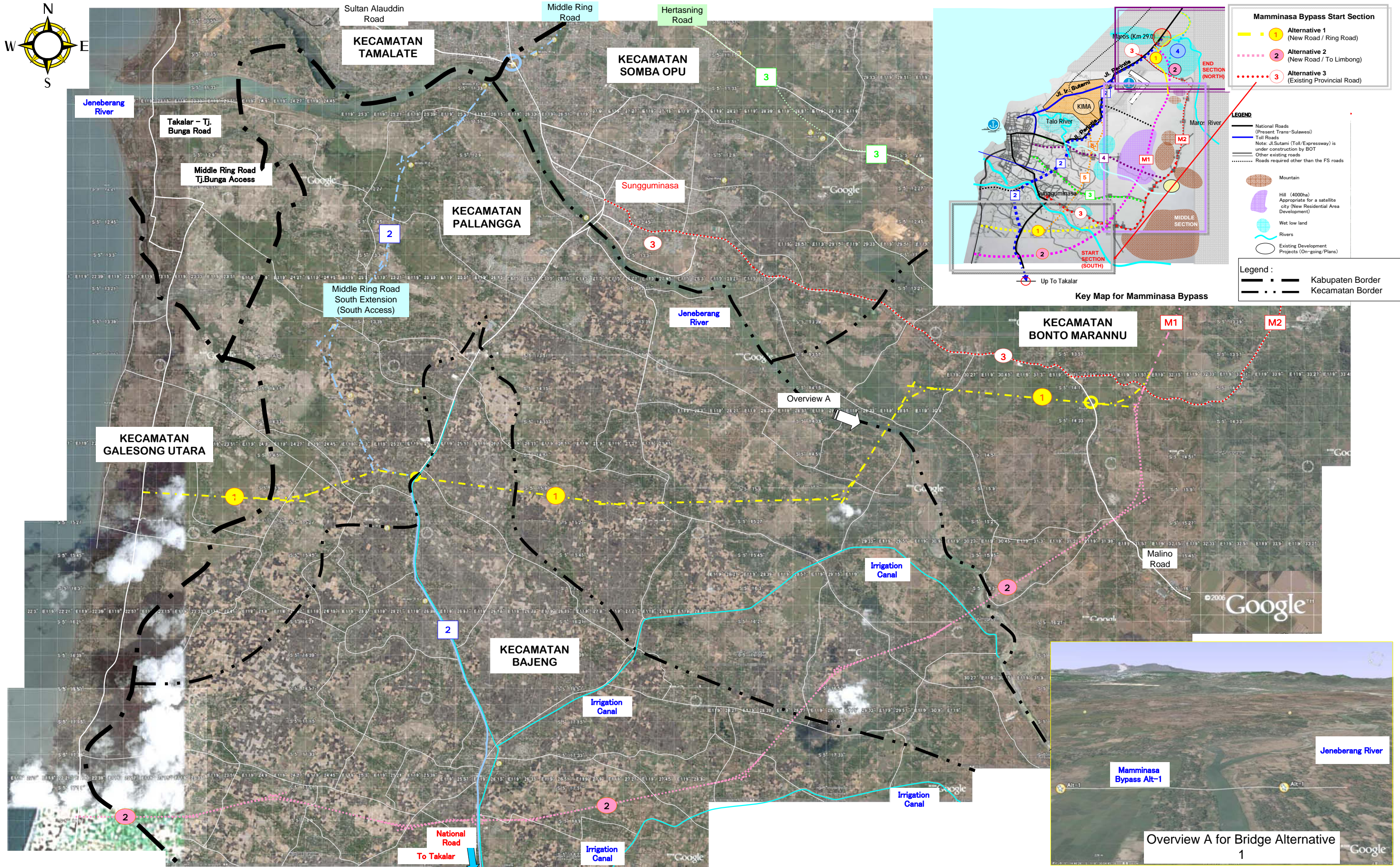
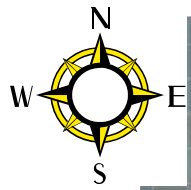


APPENDIX-A

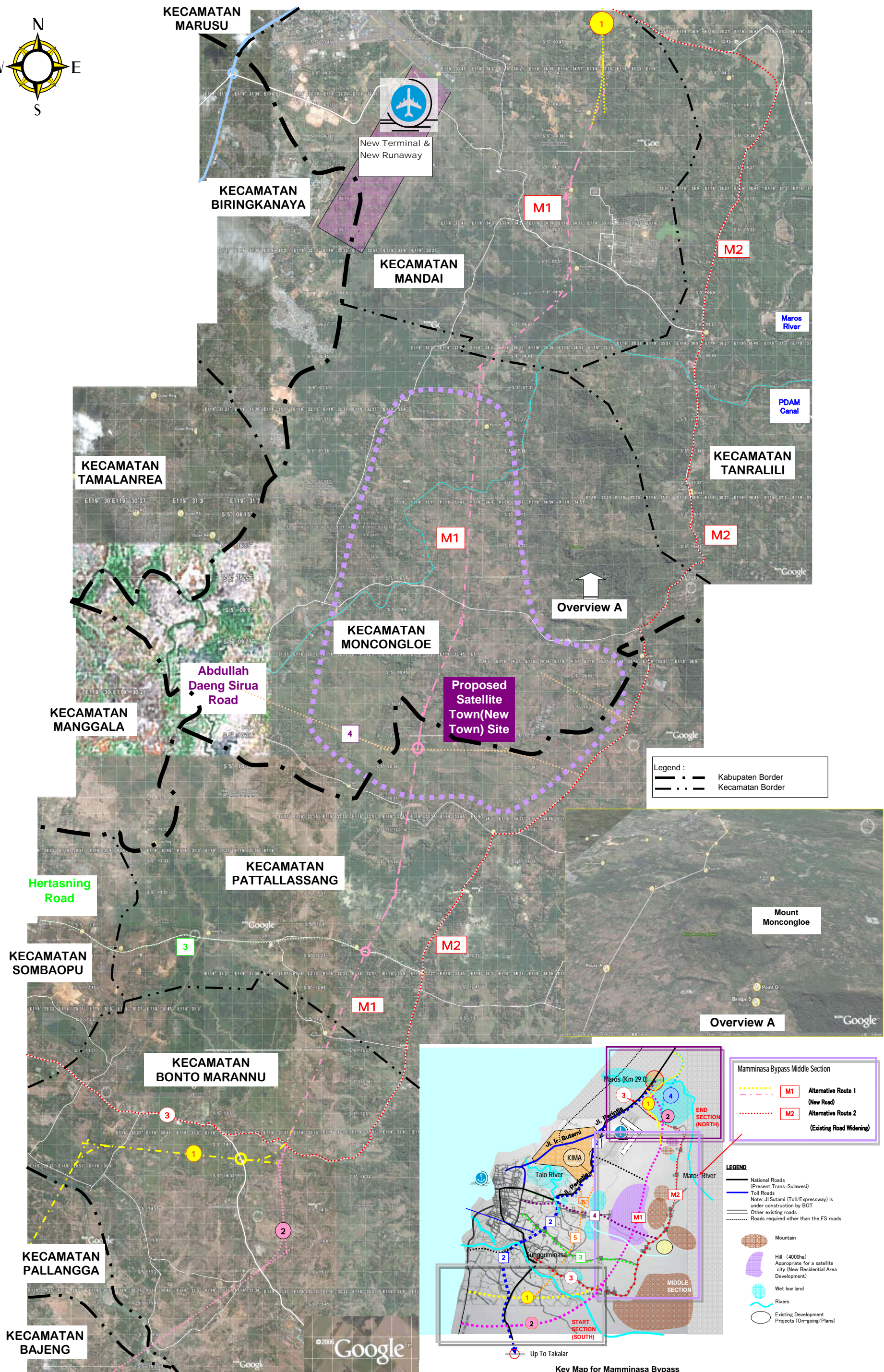
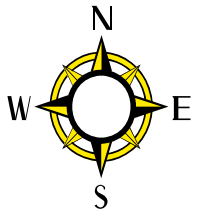
ALTERNATIVE ROUTE STUDY MAPS FOR THE F/S ROADS



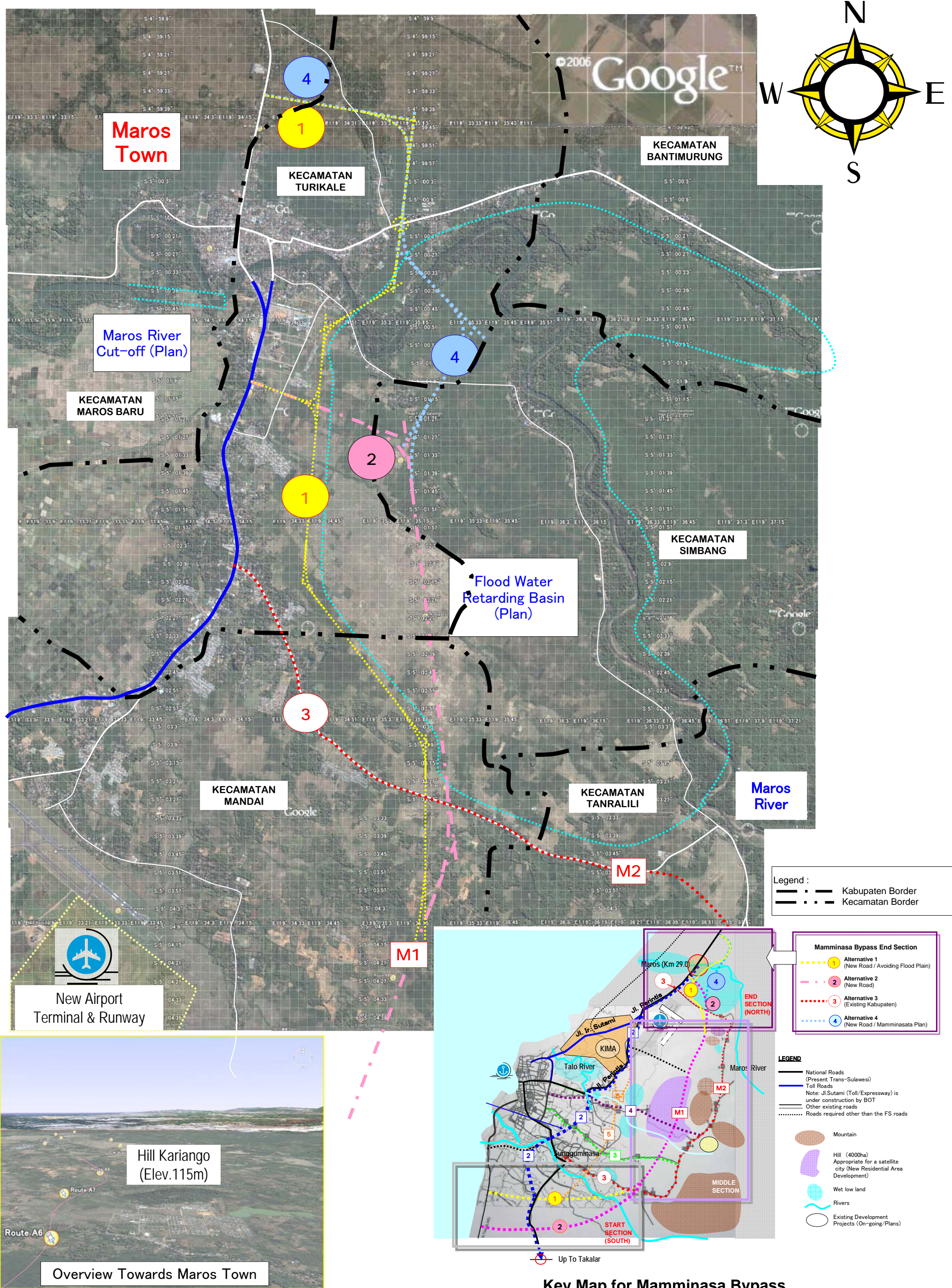
Attachment 1 Alternative Route Study for Trans-Sulawesi Road Mamminasata Section, C-Section



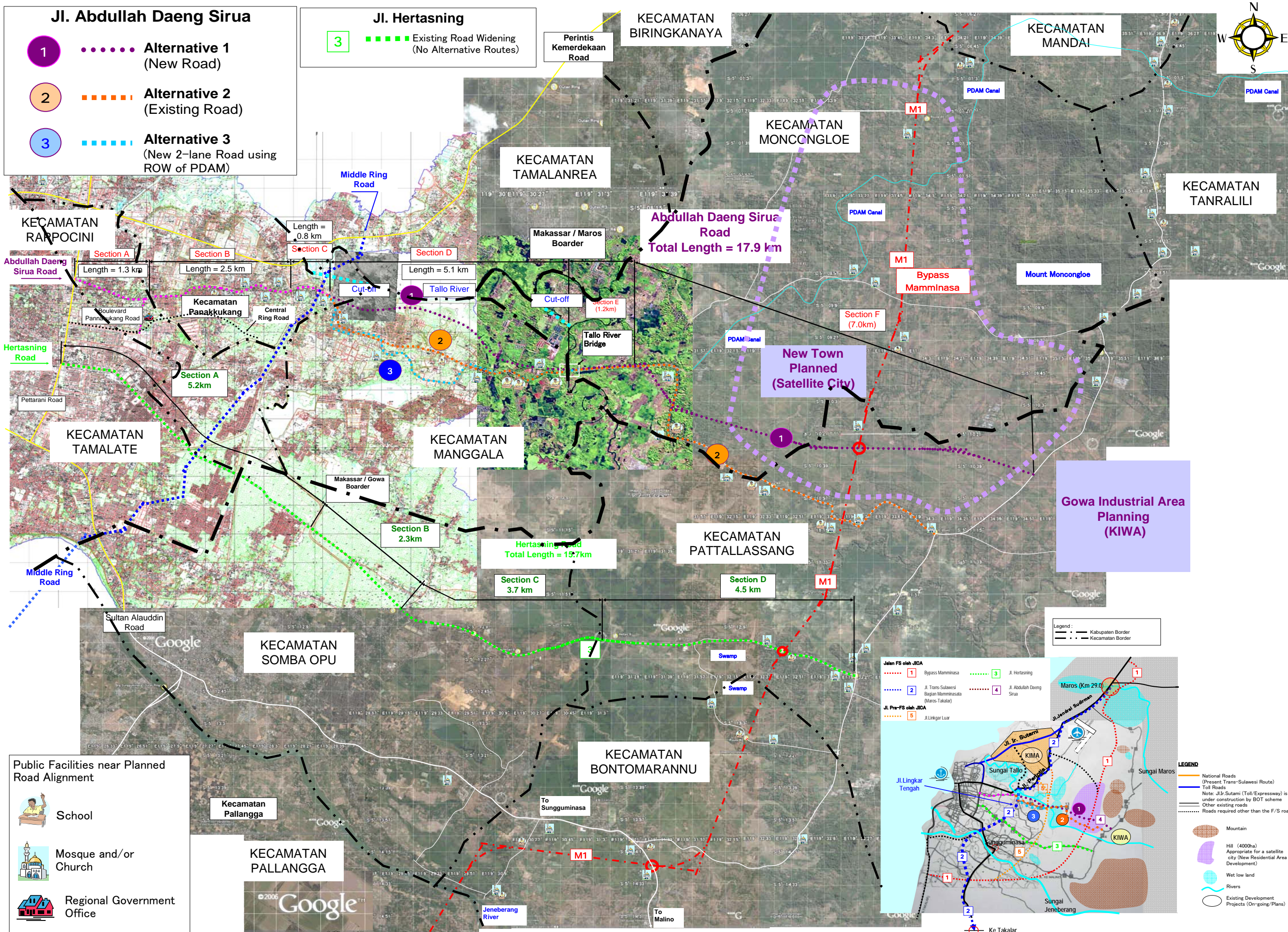
Attachment 2 Alternative Routes Mamminasa Bypass Start (South) Section



Attachment 3 Alternative Routes for Mamminasa Bypass Middle Section

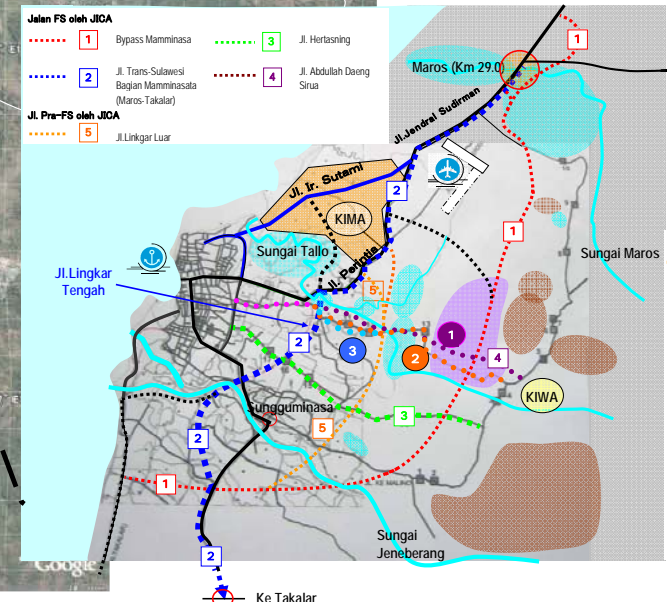
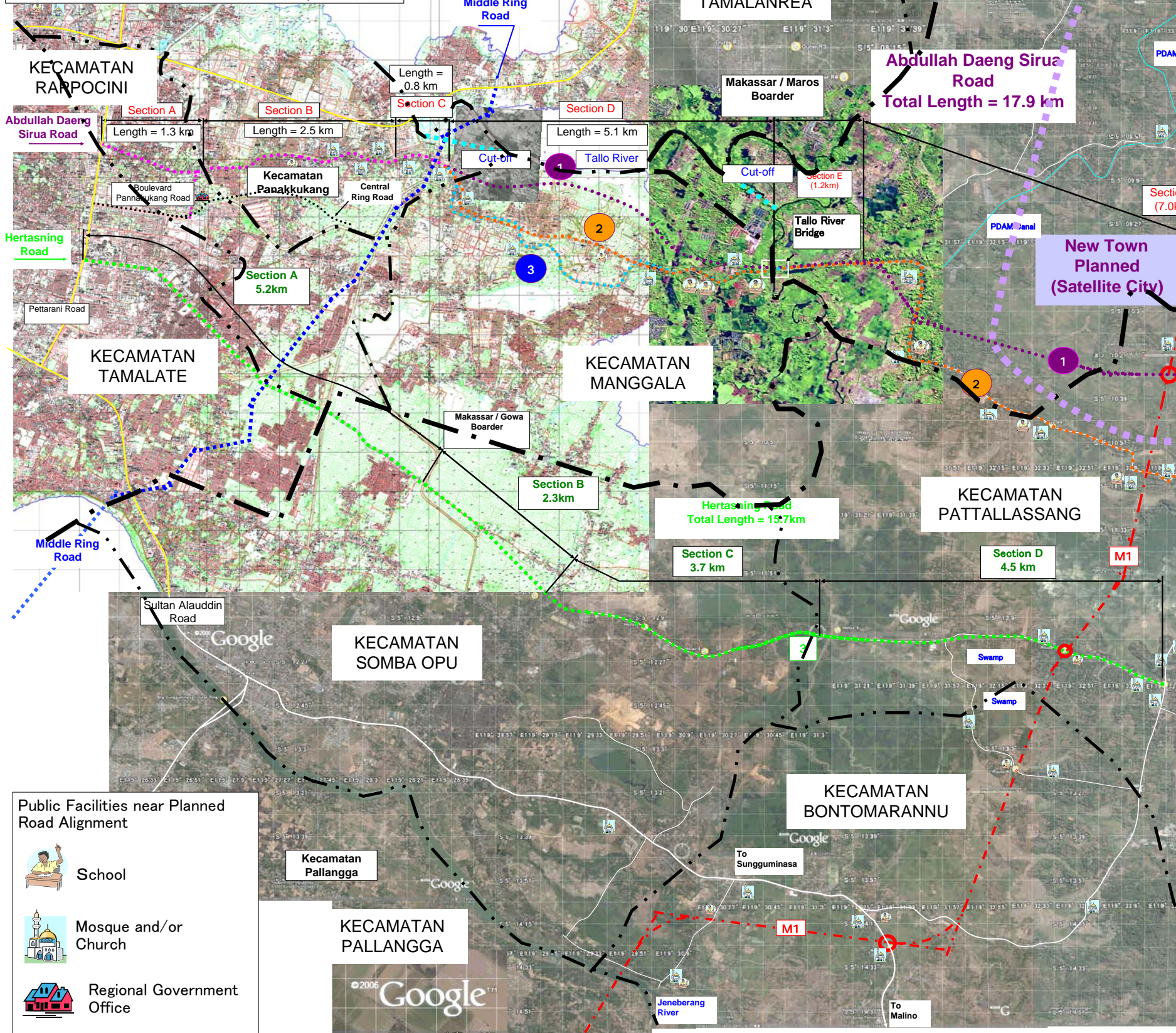


Attachment 4 Alternative Routes for Mamminasa Bypass End (North) Section



- Jl. Abdullah Daeng Sirua**
- 1 Alternative 1 (New Road)
 - 2 - - - - - Alternative 2 (Existing Road)
 - 3 - - - - - Alternative 3 (New 2-lane Road using ROW of PDAM)

- Jl. Hertasning**
- 3 - - - - - Existing Road Widening (No Alternative Routes)



Attachment 5 Alternative Routes Abdullah Daeng Sirua Road

APPENDIX-B

BORING LOGS AND GEOLOGICAL CROSS SECTIONS
FOR MAJOR BRIDGES

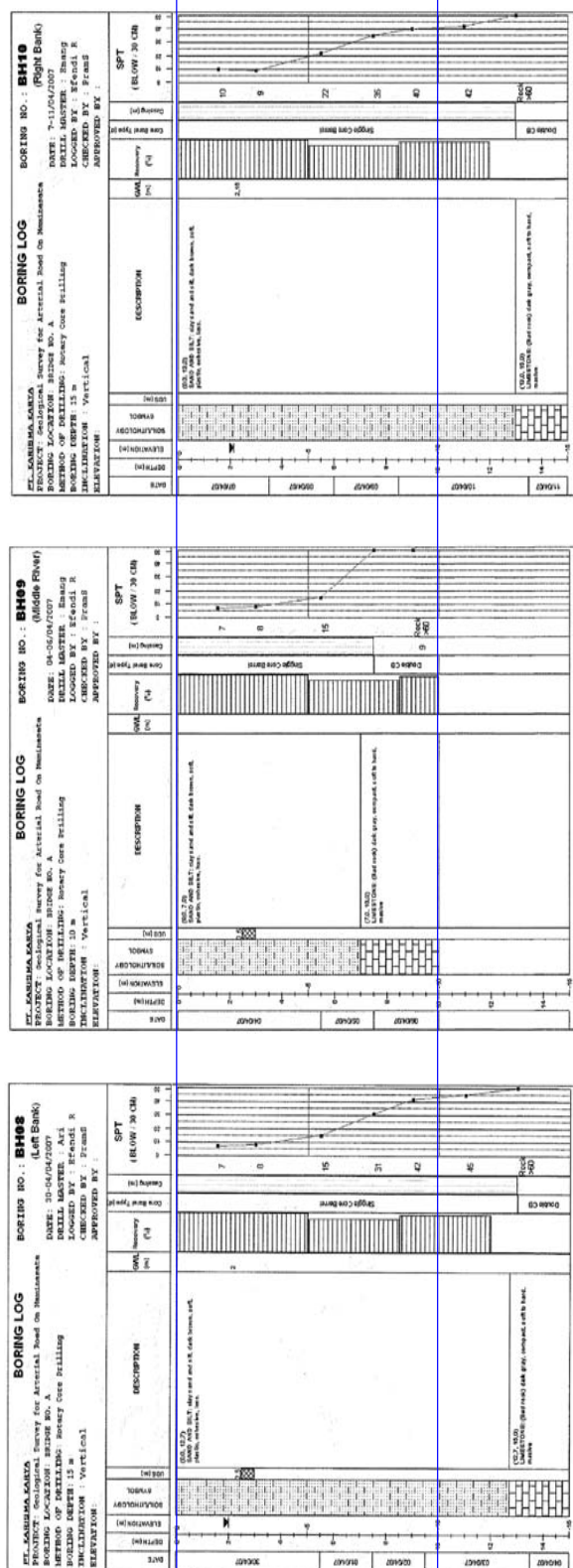
Appendix B Boring Logs and Geological Cross Sections for Major Bridges

Appendix B.1: Maros Bridge (Bridge No.1-5) on Mamminasa Bypass

Appendix B.2: Jeneberang No.1 Bridge (Bridge No. 1-31) on Mamminasa Bypass

Appendix B.3: Tallo Bridge (Bridge Number 2-6) on Trans-Sulawesi Mamminasata Road

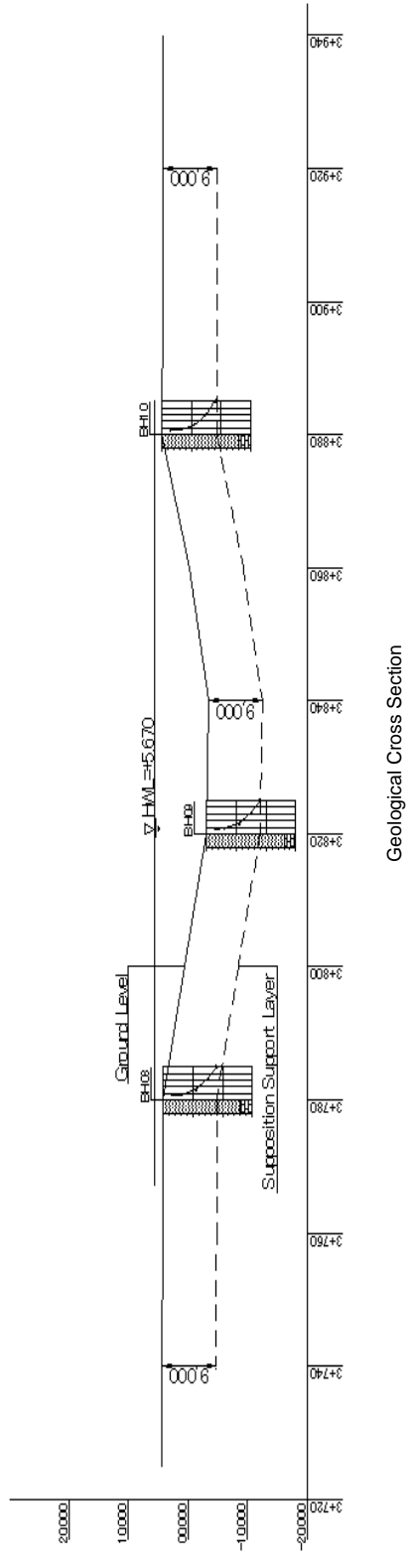
Appendix B.4: Jeneberang No.2 Bridge (Bridge No. 2-11) on Trans-Sulawesi Mamminasata Road



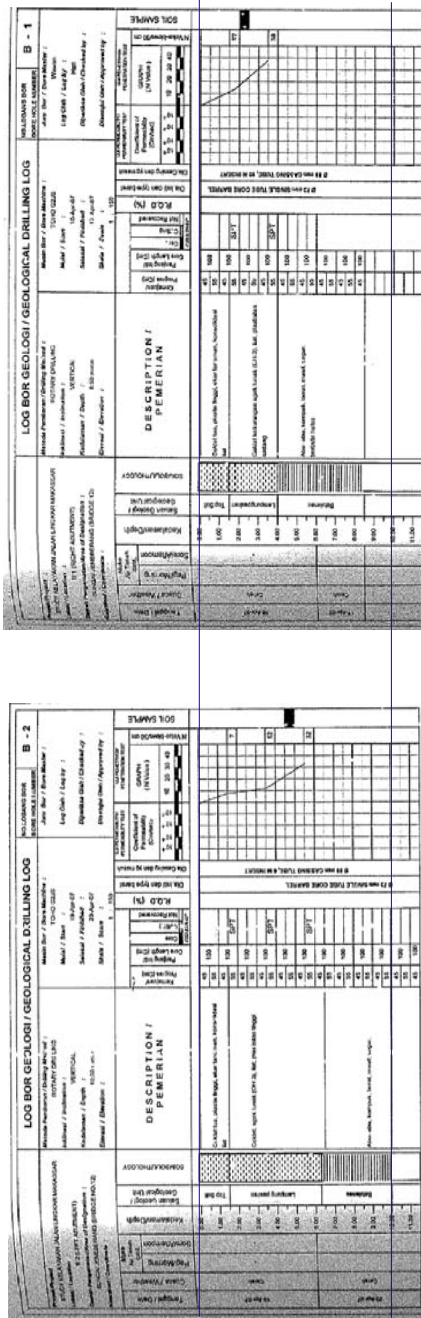
Bore Hole No.10 at Right Bank

Bore Hole No.09 at River Center

Bore Hole No.08 at Left Bank

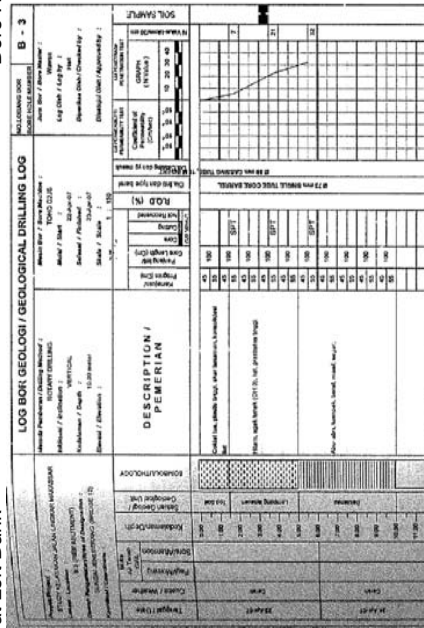


Appendix B.1 Boring Logs and Geological Cross Section
 for Maros Bridge on Mamminasa Bypass

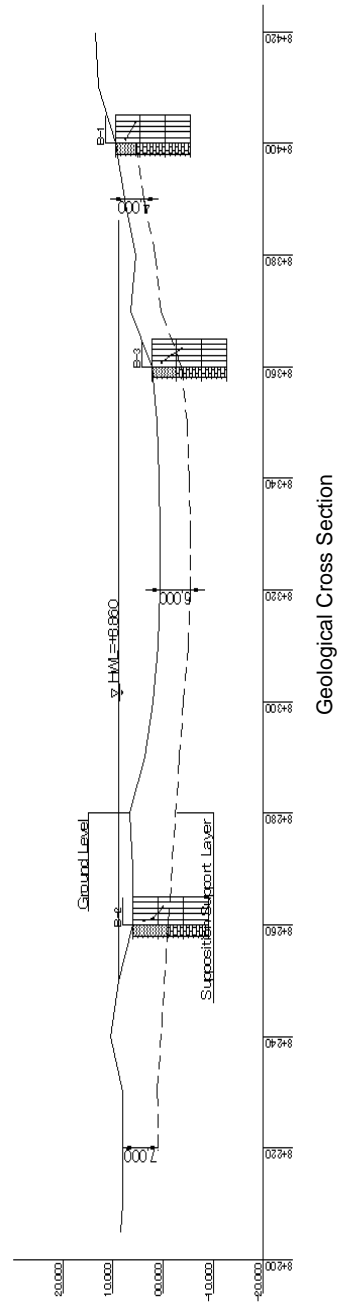


Bore Hole No.01 at Right Bank

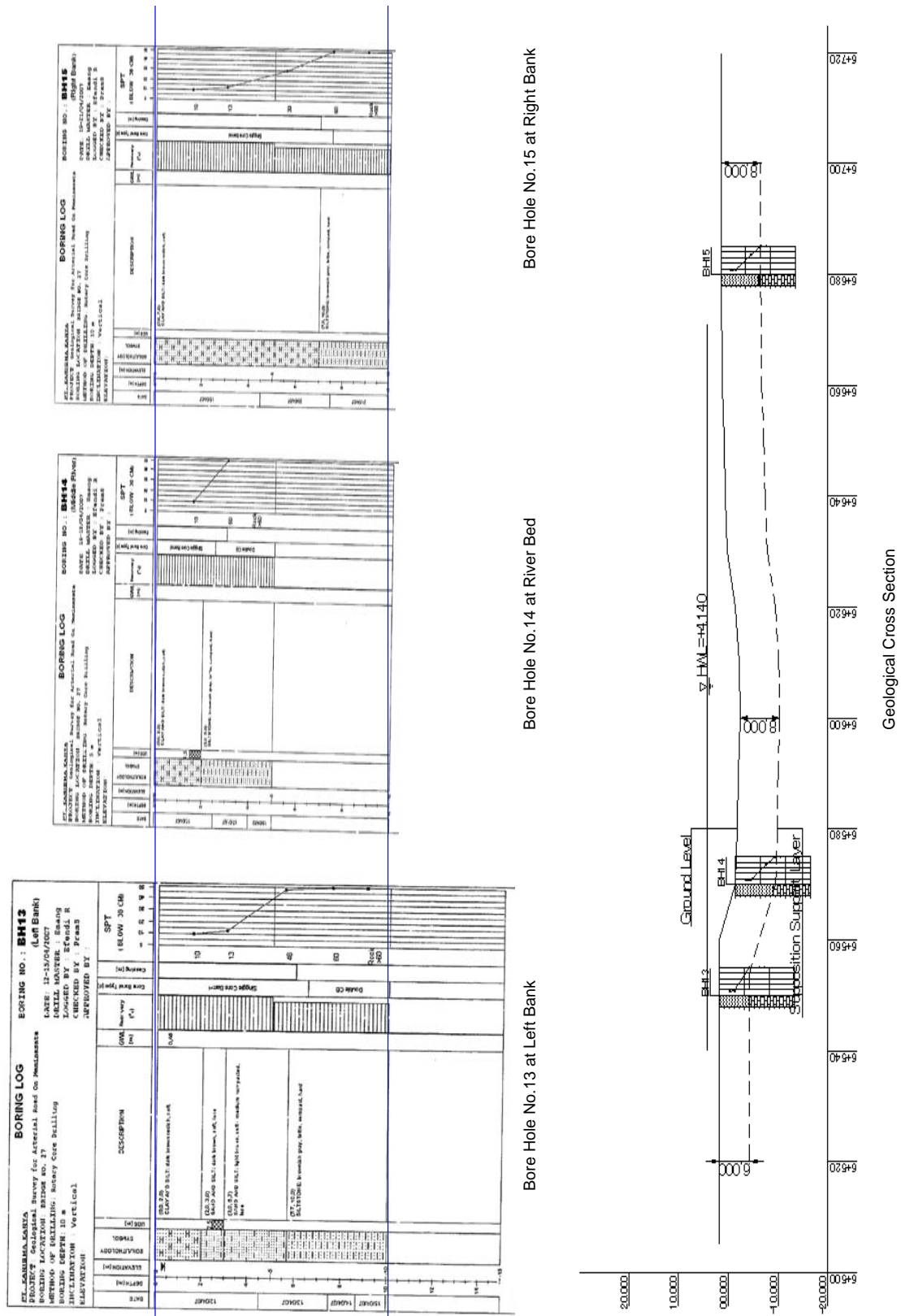
Bore Hole No.02 at Left Bank



Bore Hole No.03 at River Center



Appendix B.2 Boring Logs and Geological Cross Section
 for Jeneberang No.1 Bridge on Mamminasa Bypass



Appendix B.3 Boring Logs and Geological Cross Section
 for Tallo Bridge on Trans-Sulawesi Mamminasata Road



Appendix B.4 Boring Logs and Geological Cross Section
 for Jeneberang No.2 Bridge on Trans-Sulawesi Mamminasata Road