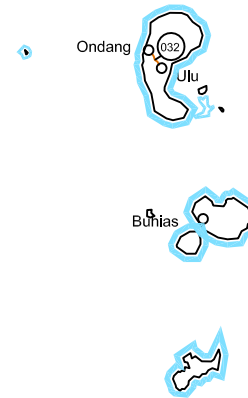
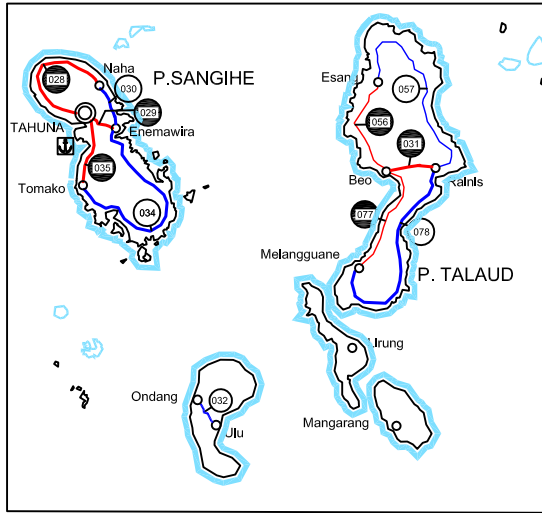
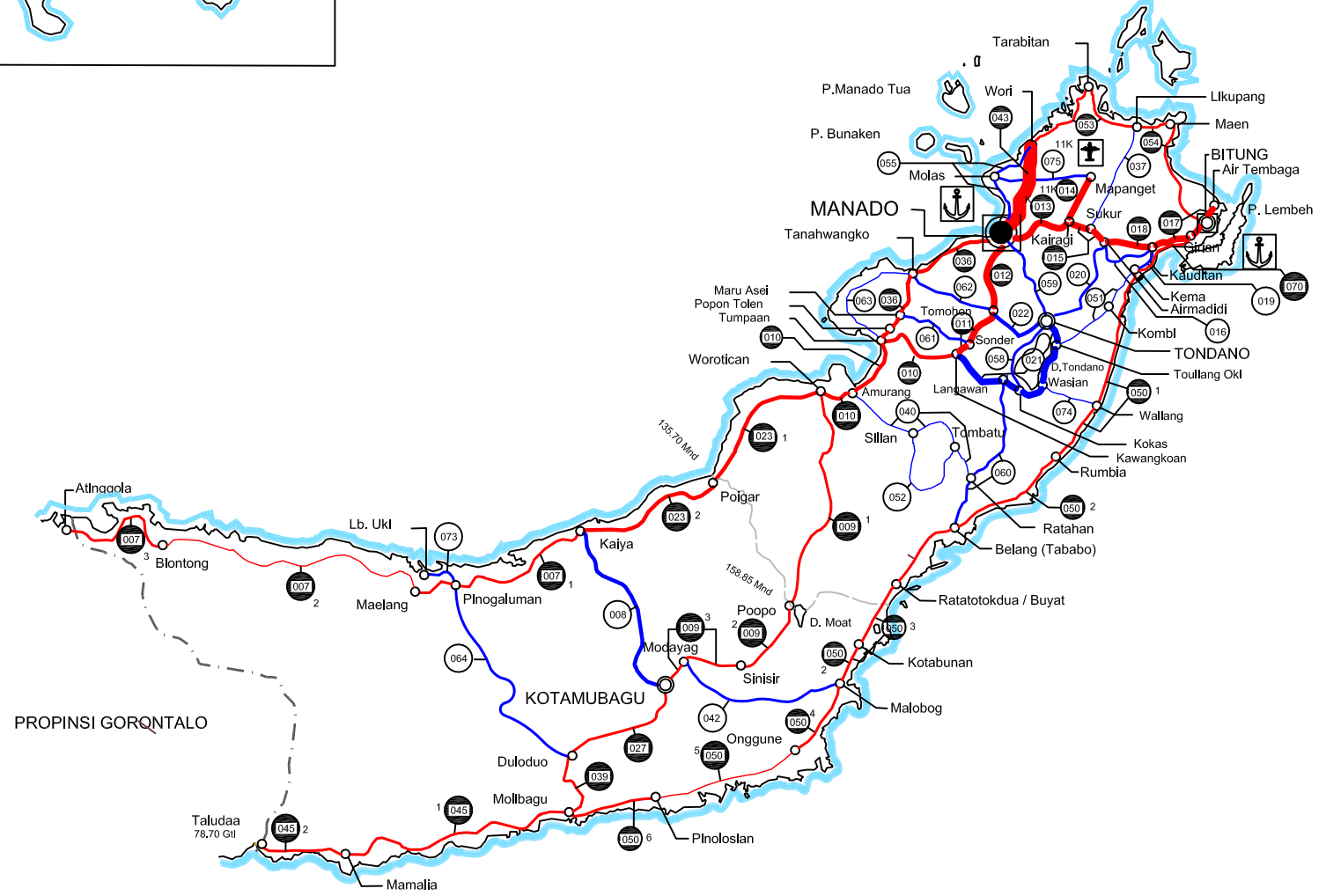


(3) ROAD WIDTH CONDITION



BASE MAP : LAMPIRAN 23A.
 KEPUTUSAN MENTERI PERMUKIMAN DAN PRASARANA WILAYAH
 NOMOR : 376 / KPTS / M / 2004
 TANGGAL : 19 OKTOBER 2004

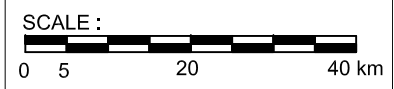
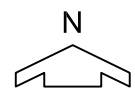
NORTH SULAWESI PROVINCE (50)



LEGEND

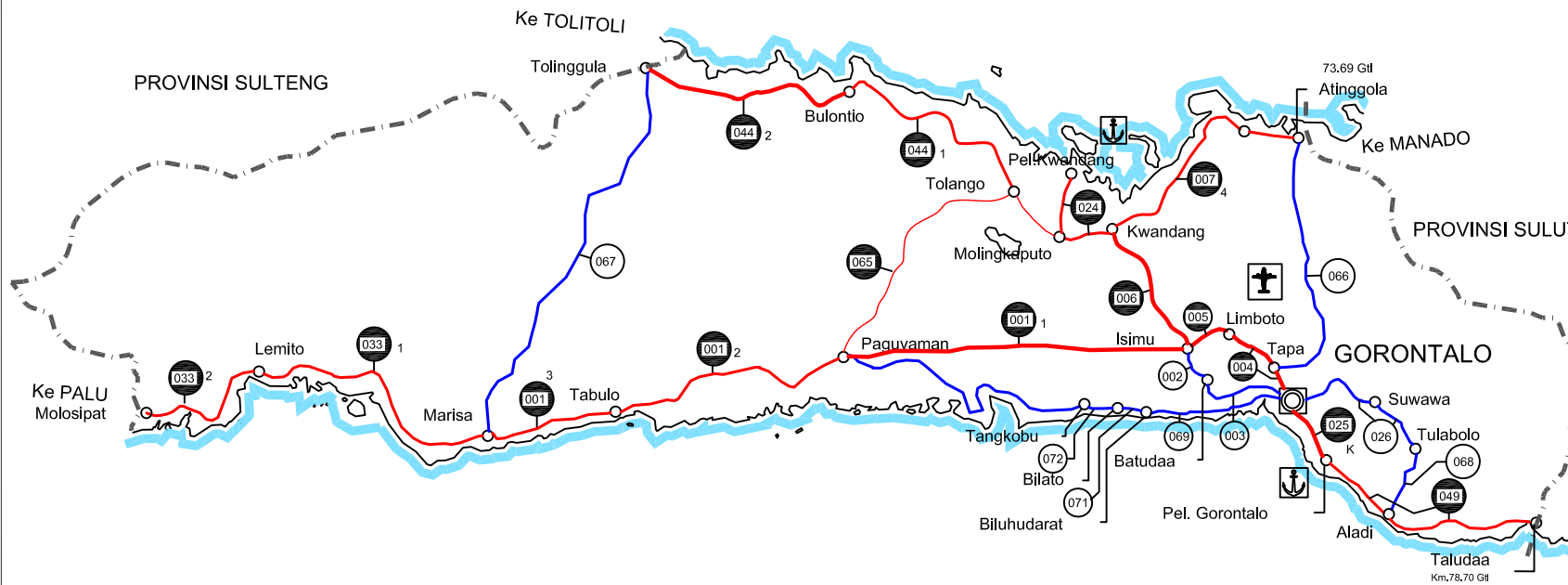
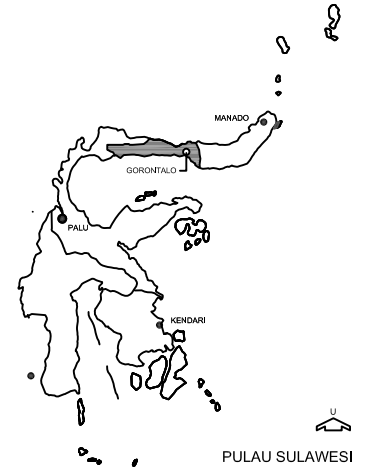
NATIONAL ROAD	PROVINCIAL ROAD
10.0m <= W	10.0m <= W
7.0m <= W < 10.0m	7.0m <= W < 10.0m
5.5m <= W < 7.0m	5.5m <= W < 7.0m
4.5m <= W < 5.5m	4.5m <= W < 5.5m
W < 4.5m	W < 4.5m

- BOUNDARY OF PROVINCE
- BOUNDARY OF DISTRICT (KABUPATEN)
- CAPITAL CITY OF PROVINCE
- CITY
- CENTER OF DISTRICT (KABUPATEN)
- CENTER OF SUB-DISTRICT (KECAMATAN)
- AIRPORT
- PORT
- LINK NUMBER



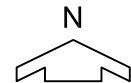
BASE MAP : LAMPIRAN 24A.
 KEPUTUSAN MENTERI PERMUKIMAN DAN
 PRASARANA WILAYAH
 NOMOR : 376 / KPTS / M / 2004.
 TANGGAL : 19 OKTOBER 2004

GORONTALO PROVINCE (51)



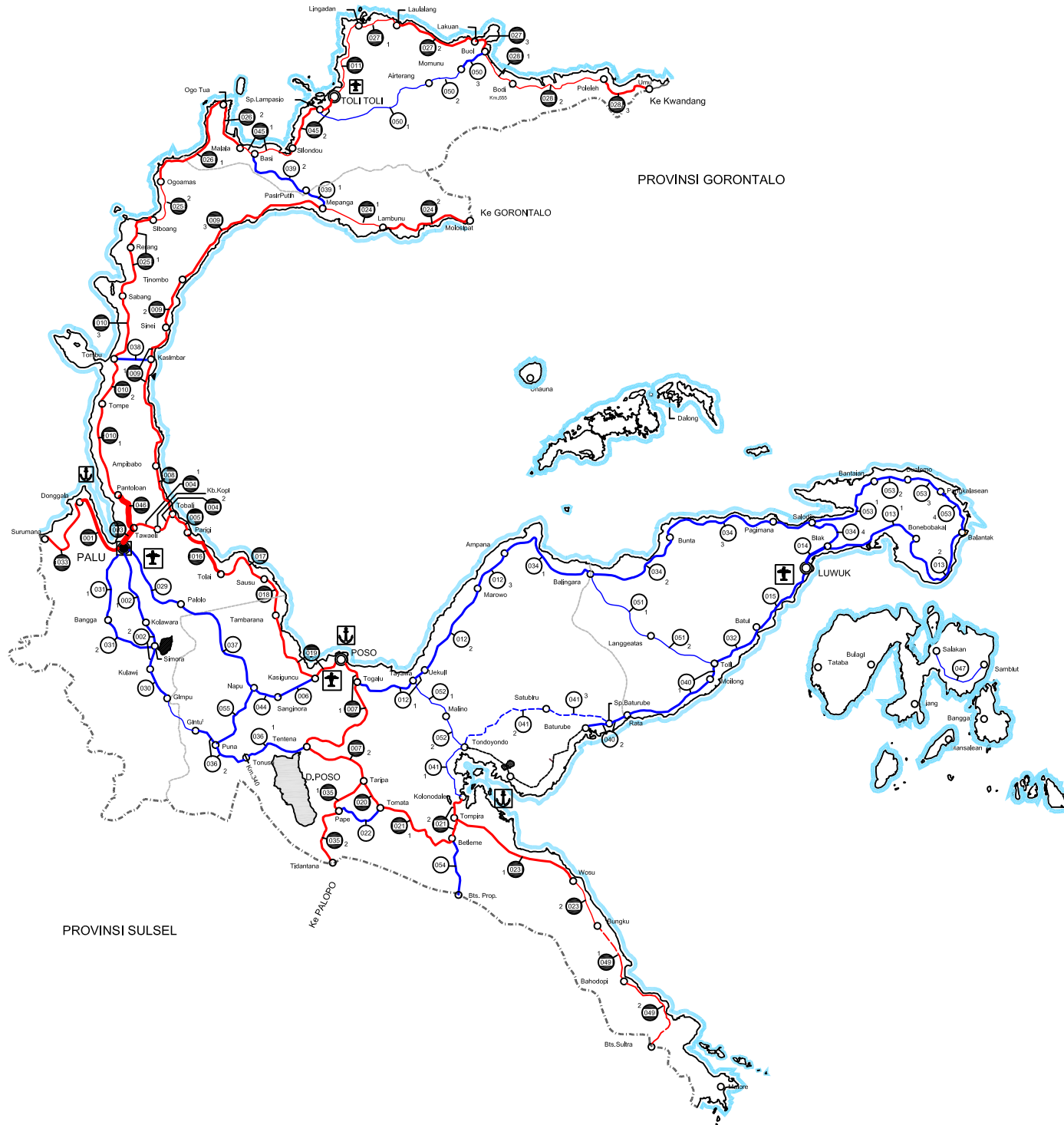
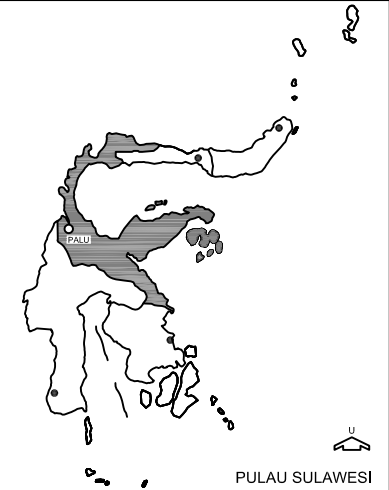
LEGEND

- | NATIONAL ROAD | | PROVINCIAL ROAD | |
|---------------|-------------------|-----------------|-------------------|
| | 10.0m =< W | | 10.0m =< W |
| | 7.0m =< W < 10.0m | | 7.0m =< W < 10.0m |
| | 5.5m =< W < 7.0m | | 5.5m =< W < 7.0m |
| | 4.5m =< W < 5.5m | | 4.5m =< W < 5.5m |
| | W < 4.5m | | W < 4.5m |
-
- BOUNDARY OF PROVINCE
 - BOUNDARY OF DISTRICT (KABUPATEN)
 - CAPITAL CITY OF PROVINCE
 - CITY
 - CENTER OF DISTRICT (KABUPATEN)
 - CENTER OF SUB-DISTRICT (KECAMATAN)
 - AIRPORT
 - PORT
 - LINK NUMBER



BASE MAP : LAMPIRAN 25A.
 KEPUTUSAN MENTERI PERMUKIMAN DAN
 PRASARANA WILAYAH
 NOMOR : 376 / KPTS / M / 2004
 TANGGAL : 19 OKTOBER 2004

CENTRAL SULAWESI PROVINCE (52)

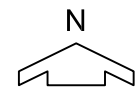


LEGEND

NATIONAL ROAD	PROVINCIAL ROAD
10,0m ≤ W	10,0m ≤ W
7,0m ≤ W < 10,0m	7,0m ≤ W < 10,0m
5,5m ≤ W < 7,0m	5,5m ≤ W < 7,0m
4,5m ≤ W < 5,5m	4,5m ≤ W < 5,5m
W < 4,5m	W < 4,5m
NO DATA	NO DATA

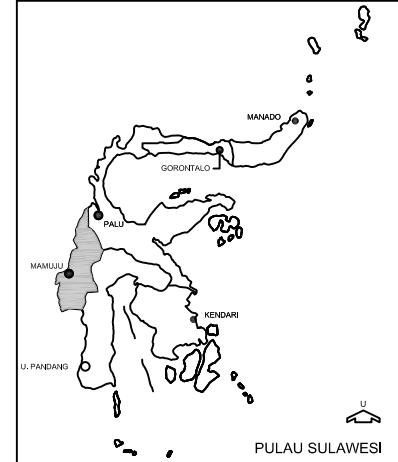
BOUNDARY OF PROVINCE
 BOUNDARY OF DISTRICT (KABUPATEN)

- CAPITAL CITY OF PROVINCE
- CITY
- CENTER OF DISTRICT (KABUPATEN)
- CENTER OF SUB-DISTRICT (KECAMATAN)
- AIRPORT
- PORT
- LINK NUMBER

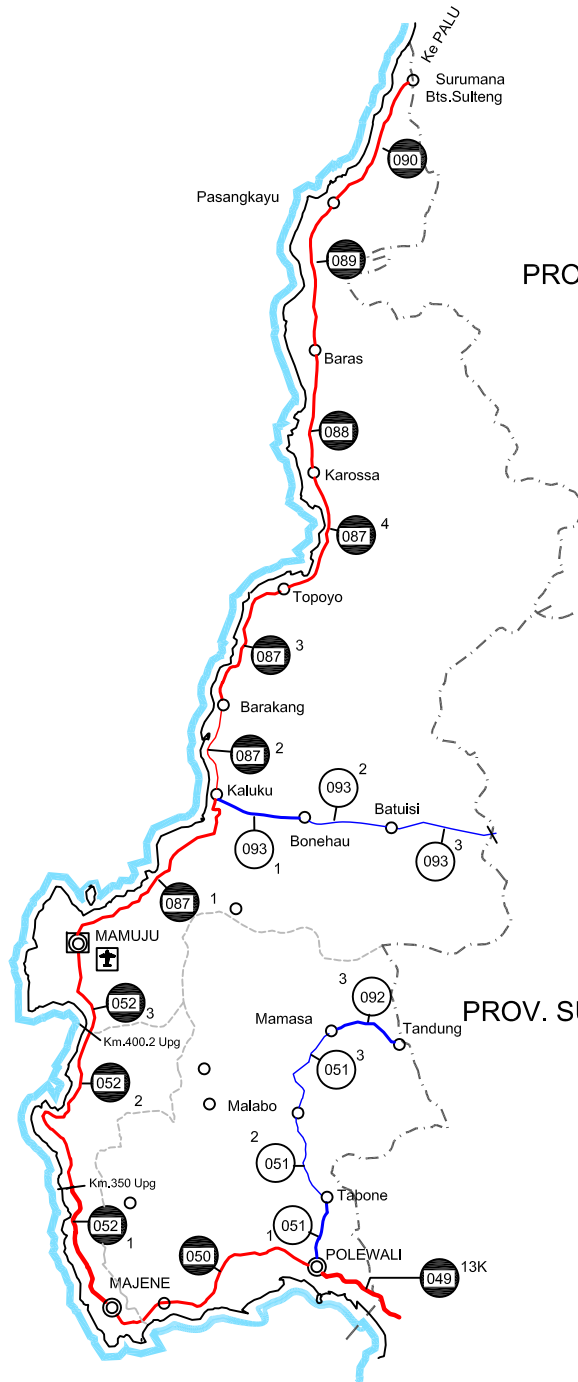


BASE MAP : LAMPIRAN 26A.
 KEPUTUSAN MENTERI PERMUKIMAN DAN PRASARANA WILAYAH
 NOMOR : 376 / KPTS / M / 2004
 TANGGAL : 19 OKTOBER 2004

WEST SULAWESI PROVINCE (53)



PROVINSI SULAWESI TENGAH

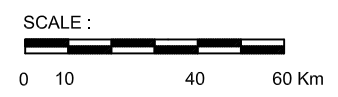
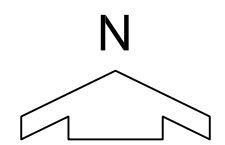


PROV. SULAWESI SELATAN

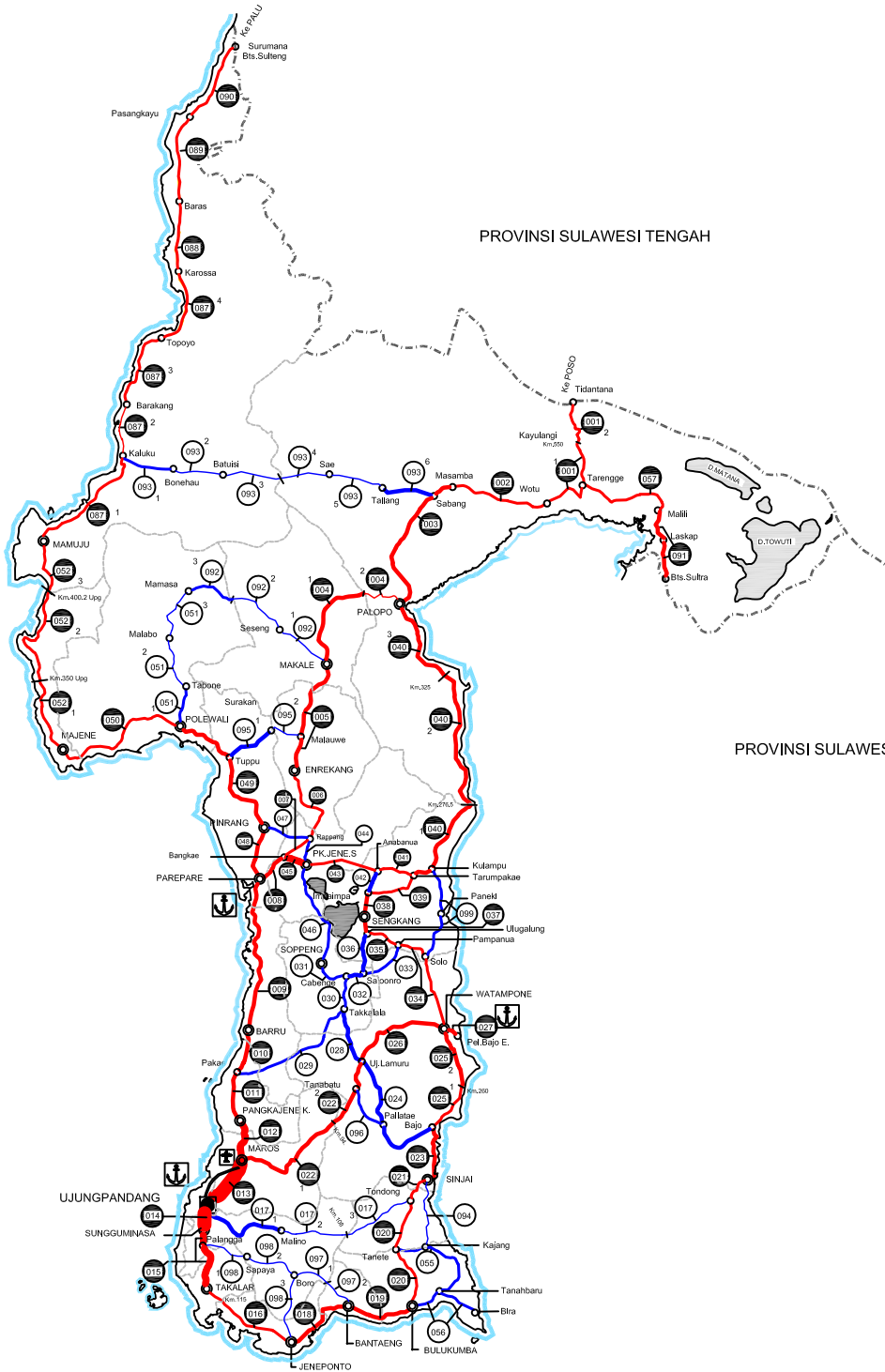
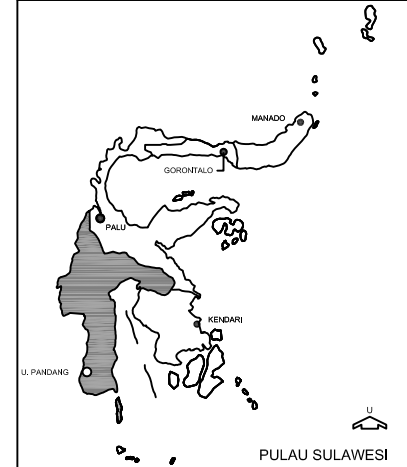
LEGEND

NATIONAL ROAD	PROVINCIAL ROAD
10.0m ≦ W	10.0m ≦ W
7.0m ≦ W < 10.0m	7.0m ≦ W < 10.0m
5.5m ≦ W < 7.0m	5.5m ≦ W < 7.0m
4.5m ≦ W < 5.5m	4.5m ≦ W < 5.5m
W < 4.5m	W < 4.5m
NO DATA	NO DATA

- BOUNDARY OF PROVINCE
- BOUNDARY OF DISTRICT (KABUPATEN)
- CAPITAL CITY OF PROVINCE
- CITY
- CENTER OF DISTRICT (KABUPATEN)
- CENTER OF SUB-DISTRICT (KECAMATAN)
- AIRPORT
- PORT
- LINK NUMBER



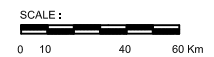
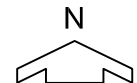
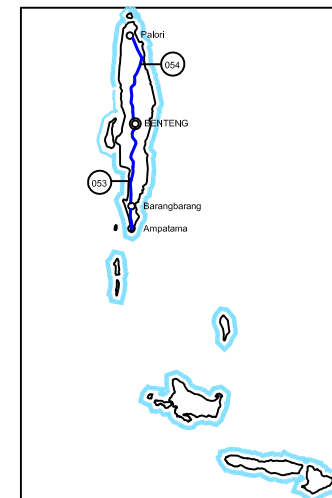
SOUTH SULAWESI PROVINCE (54)



LEGEND

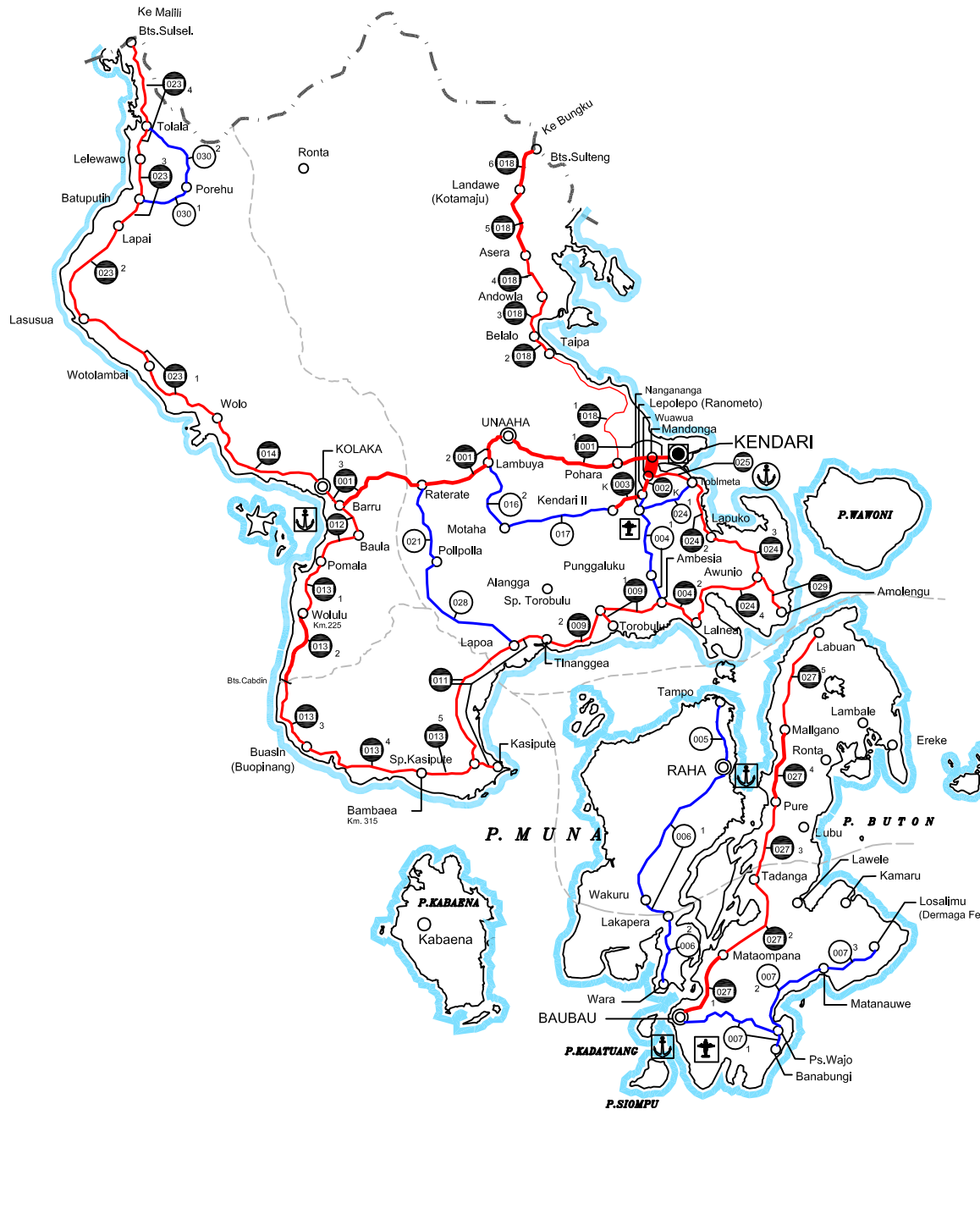
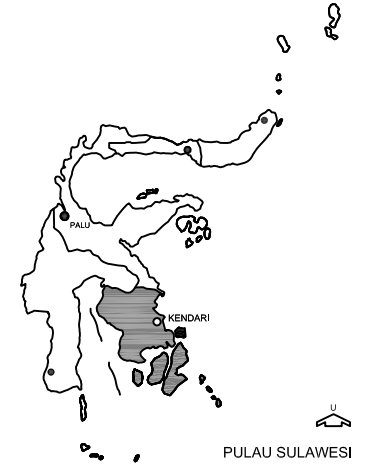
NATIONAL ROAD	PROVINCIAL ROAD
10,0m =< W	10,0m =< W
7,0m =< W < 10,0m	7,0m =< W < 10,0m
5,5m =< W < 7,0m	5,5m =< W < 7,0m
4,5m =< W < 5,5m	4,5m =< W < 5,5m
W < 4,5m	W < 4,5m
NO DATA	NO DATA

- BOUNDARY OF PROVINCE
- BOUNDARY OF DISTRICT (KABUPATEN)
- CAPITAL CITY OF PROVINCE
- CITY
- CENTER OF DISTRICT (KABUPATEN)
- CENTER OF SUB-DISTRICT (KECAMATAN)
- AIRPORT
- PORT
- LINK NUMBER



BASE MAP : LAMPIRAN 27A.
 KEPUTUSAN MENTERI PERMUKIMAN DAN
 PRASARANA WILAYAH
 NOMOR : 376 / KPTS / M / 2004
 TANGGAL : 19 OKTOBER 2004

SOUTHEAST SULAWESI PROVINCE (56)



LEGEND

NATIONAL ROAD	PROVINCIAL ROAD
10.0m <= W	10.0m <= W
7.0m <= W < 10.0m	7.0m <= W < 10.0m
5.5m <= W < 7.0m	5.5m <= W < 7.0m
4.5m <= W < 5.5m	4.5m <= W < 5.5m
W < 4.5m	W < 4.5m
NO DATA	NO DATA

- BOUNDARY OF PROVINCE
- BOUNDARY OF DISTRICT (KABUPATEN)
- CAPITAL CITY OF PROVINCE
- CITY
- CENTER OF DISTRICT (KABUPATEN)
- CENTER OF SUB-DISTRICT (KECAMATAN)
- AIRPORT
- PORT
- LINK NUMBER

