

Figure 2.4 Plan for Metric Artery Roads and a Bus Terminal

### (3) River culverts and underpasses

There exists a plan to cover the river flowing along the east-west road to the north of the project area to create on-street parking spaces (Figure 2.5). This would affect the traffic flow in the project area as well. There are one underpass for vehicles and three pedestrian underpasses crossing the Sixth Tishreen street. They will need to be planned as part of the district planning as the flow of traffic and pedestrians would change significantly.

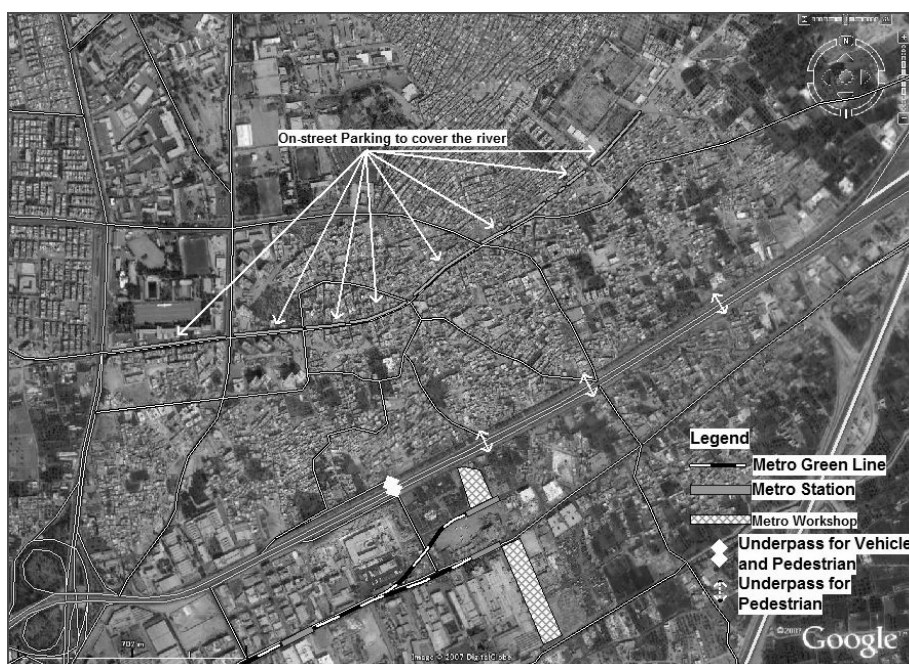


Figure 2.5 Plan for River Culverts and Existing Underpasses