

Appendix for Chapter 15

Appendix 15.1 Current Service Ratio

Appendix 15.2 Distribution of Current Service Ratio

Appendix 15.3 Contents of Questionnaire Survey for Poverty Survey 2006

Appendix 15.4 Data from “Poverty Survey 2006”

Appendix 15.5 Poverty Distribution Map

Appendix 15.6 Water Charge in Community Water Supply System

Appendix 15.1 Current Service Ratio

		Total Populatio n person	PDAM Yogyakarta			PDAM Sleman			Community System			Total		
			No. Conc.	Served Pop.	Service Ratio	No. Conc.	Served Pop.	Service Ratio	No. Conc.	Served Pop.	Service Ratio	No. Conc.	Served Pop.	Service Ratio
			nos.	person	%	nos.	person	%	nos.	person	%	nos.	person	%
20000	Sleman Regency	960,803	4,865	24,325	2.5%	18,994	94,970	9.9%	5,564	19,532	2.0%	29,423	138,827	14.4%
20101	Sumberahayu	5,722		0	0.0%	0	0	0.0%	0	0	0.0%	0	0	0.0%
20102	Sumpersari	6,873		0	0.0%	0	0	0.0%	140	700	10.2%	140	700	10.2%
20103	Sumberagung	10,139		0	0.0%	215	1,073	10.6%	0	0	0.0%	215	1,073	10.6%
20104	Sumberarum	6,053		0	0.0%	0	0	0.0%	0	0	0.0%	0	0	0.0%
20201	Sendangmulyo	6,537		0	0.0%	0	0	0.0%	50	250	3.8%	50	250	3.8%
20202	Sendangarum	3,237		0	0.0%	0	0	0.0%	0	0	0.0%	0	0	0.0%
20203	Sendangrejo	7,100		0	0.0%	20	99	1.4%	0	0	0.0%	20	99	1.4%
20204	Sendangagung	3,506		0	0.0%	158	788	22.5%	0	0	0.0%	158	788	22.5%
20205	Sendangsari	7,228		0	0.0%	0	0	0.0%	40	200	2.8%	40	200	2.8%
20301	Margodadi	7,133		0	0.0%	0	0	0.0%	0	0	0.0%	0	0	0.0%
20302	Margoluwih	8,173		0	0.0%	0	0	0.0%	80	400	4.9%	80	400	4.9%
20303	Margomulyo	10,076		0	0.0%	0	0	0.0%	0	0	0.0%	0	0	0.0%
20304	Margoagung	8,248		0	0.0%	0	0	0.0%	0	0	0.0%	0	0	0.0%
20305	Margokaton	6,238		0	0.0%	0	0	0.0%	50	250	4.0%	50	250	4.0%
20401	Sidorejo	5,668		0	0.0%	0	0	0.0%	75	375	6.6%	75	375	6.6%
20402	Siduluhur	8,774		0	0.0%	286	1,430	16.3%	0	0	0.0%	286	1,430	16.3%
20403	Sidomulyo	5,474		0	0.0%	0	0	0.0%	0	0	0.0%	0	0	0.0%
20404	Sidoagung	7,398		0	0.0%	215	1,073	14.5%	0	0	0.0%	215	1,073	14.5%
20405	Sidokarto	8,664		0	0.0%	518	2,591	29.9%	0	0	0.0%	518	2,591	29.9%
20406	Sidoarum	13,799		0	0.0%	518	2,591	18.8%	0	0	0.0%	518	2,591	18.8%
20407	Sidomoyo	6,433		0	0.0%	518	2,591	40.3%	0	0	0.0%	518	2,591	40.3%
20501	Balecatuur	17,225		0	0.0%	433	2,166	12.6%	150	750	4.4%	583	2,916	16.9%
20502	Ambarketawang	19,424		0	0.0%	606	3,030	15.6%	0	0	0.0%	606	3,030	15.6%
20503	Banyuraden	16,247		0	0.0%	433	2,166	13.3%	0	0	0.0%	433	2,166	13.3%
20504	Nogotirto	17,576		0	0.0%	433	2,166	12.3%	0	0	0.0%	433	2,166	12.3%
20505	Trihanggo	14,657	7	35	0.2%	325	1,625	11.1%	0	0	0.0%	332	1,660	11.3%
20601	Tirtoadi	7,948		0	0.0%	42	211	2.7%	0	0	0.0%	42	211	2.7%
20602	Sumberadi	12,302		0	0.0%	616	3,082	25.0%	0	0	0.0%	616	3,082	25.0%
20603	Tlogoadi	10,262		0	0.0%	253	1,266	12.3%	60	300	2.9%	313	1,566	15.3%
20604	Sendangadi	13,443		0	0.0%	981	4,905	36.5%	0	0	0.0%	981	4,905	36.5%
20605	Sinduadi	42,561	1,019	5,095	12.0%	916	4,580	10.8%	0	0	0.0%	1,935	9,675	22.7%
20701	Caturtunggal	86,177	1,092	5,460	6.3%	1,115	5,577	6.5%	0	0	0.0%	2,207	11,037	12.8%
20702	Maguwoharjo	35,982		0	0.0%	663	3,316	9.2%	50	250	0.7%	713	3,566	9.9%
20703	Condongcatur	53,294	1,148	5,740	10.8%	1,422	7,110	13.3%	0	0	0.0%	2,570	12,850	24.1%
20801	Sendangtirto	12,705		0	0.0%	111	554	4.4%	0	0	0.0%	111	554	4.4%
20802	Tegalirto	8,695		0	0.0%	192	961	11.1%	0	0	0.0%	192	961	11.1%
20803	Jogotirto	7,752		0	0.0%	0	0	0.0%	0	0	0.0%	0	0	0.0%
20804	Kalitirto	10,612		0	0.0%	303	1,515	14.3%	0	0	0.0%	303	1,515	14.3%
20901	Sumberharjo	11,516		0	0.0%	0	0	0.0%	200	1,000	8.7%	200	1,000	8.7%
20902	Wukirharjo	2,204		0	0.0%	0	0	0.0%	300	1,500	68.1%	300	1,500	68.1%
20903	Gayamharjo	3,939		0	0.0%	0	0	0.0%	0	0	0.0%	0	0	0.0%
20904	Sambirojo	4,596		0	0.0%	0	0	0.0%	577	2,885	62.8%	577	2,885	62.8%
20905	Madurojo	9,921		0	0.0%	0	0	0.0%	0	0	0.0%	0	0	0.0%
20906	Bokoharjo	10,124		0	0.0%	347	1,736	17.1%	0	0	0.0%	347	1,736	17.1%
21001	Purwomartani	28,531		0	0.0%	1,164	5,821	20.4%	0	0	0.0%	1,164	5,821	20.4%
21002	Tirtomartani	12,906		0	0.0%	149	744	5.8%	0	0	0.0%	149	744	5.8%
21003	Tamanmartani	12,708		0	0.0%	0	0	0.0%	0	0	0.0%	0	0	0.0%
21004	Selomartani	9,517		0	0.0%	52	259	2.7%	0	0	0.0%	52	259	2.7%
21101	Wedomartani	22,900		0	0.0%	727	3,637	15.9%	0	0	0.0%	727	3,637	15.9%
21102	Widodomartani	6,317		0	0.0%	268	1,339	21.2%	0	0	0.0%	268	1,339	21.2%
21103	Bimomartani	5,351		0	0.0%	402	2,009	37.5%	0	0	0.0%	402	2,009	37.5%
21104	Sindumartani	6,319		0	0.0%	536	2,678	42.4%	0	0	0.0%	536	2,678	42.4%
21105	Umbulmartani	9,251	298	1,490	16.1%	231	1,155	12.5%	0	0	0.0%	529	2,645	28.6%
21201	Sariharjo	18,998		0	0.0%	416	2,082	11.0%	0	0	0.0%	416	2,082	11.0%
21202	Donoharjo	7,013		0	0.0%	388	1,938	27.6%	60	300	4.3%	448	2,238	31.9%
21203	Sardonoharjo	15,673	336	1,680	10.7%	204	1,022	6.5%	0	0	0.0%	540	2,702	17.2%
21204	Sukoharjo	12,190	280	1,400	11.5%	244	1,222	10.0%	50	250	2.1%	574	2,872	23.6%
21205	Sinduharjo	16,165	685	3,425	21.2%	204	1,022	6.3%	0	0	0.0%	889	4,447	27.5%
21206	Minomartani	13,567		0	0.0%	0	0	0.0%	0	0	0.0%	0	0	0.0%
21301	Caturharjo	11,427		0	0.0%	147	733	6.4%	0	0	0.0%	147	733	6.4%
21302	Triharjo	13,664		0	0.0%	183	916	6.7%	0	0	0.0%	183	916	6.7%
21303	Tridadi	12,261		0	0.0%	1,002	5,008	40.8%	0	0	0.0%	1,002	5,008	40.8%
21304	Pandowharjo	8,746		0	0.0%	183	916	10.5%	0	0	0.0%	183	916	10.5%
21305	Trimulyo	7,466		0	0.0%	0	0	0.0%	0	0	0.0%	0	0	0.0%

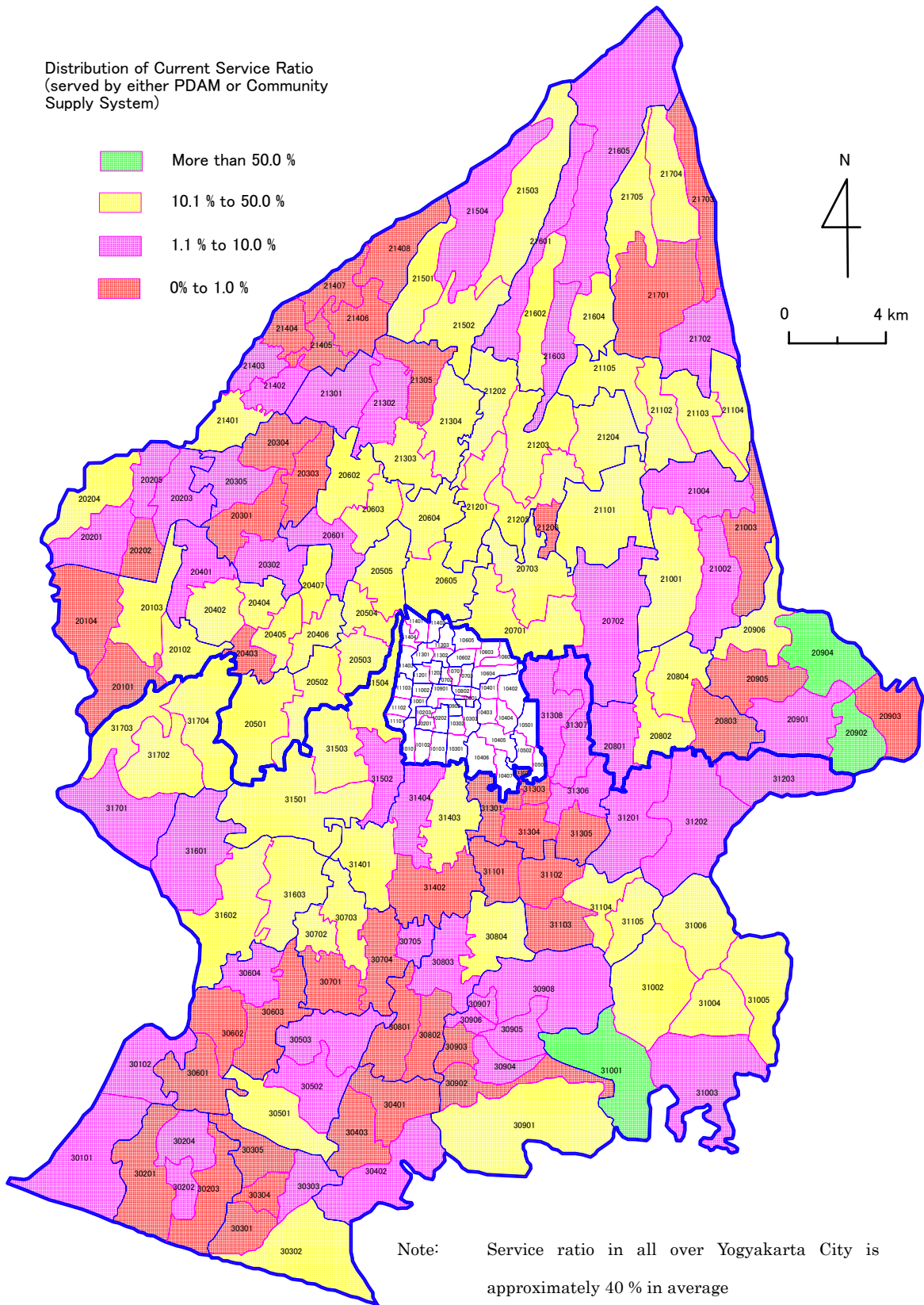
	Total Populatio n	PDAM Yogyakarta			PDAM Sleman			Community System			Total		
		No. Conc.	Served Pop.	Service Ratio	No. Conc.	Served Pop.	Service Ratio	No. Conc.	Served Pop.	Service Ratio	No. Conc.	Served Pop.	Service Ratio
		person	nos.	person	%	nos.	person	%	nos.	person	%	nos.	person
21401 Banyurejo	6,675		0	0.0%	158	788	11.8%	0	0	0.0%	158	788	11.8%
21402 Tambakrejo	3,987		0	0.0%	39	197	4.9%	0	0	0.0%	39	197	4.9%
21403 Sumberejo	3,682		0	0.0%	20	99	2.7%	0	0	0.0%	20	99	2.7%
21404 Pondokrejo	5,153		0	0.0%	0	0	0.0%	0	0	0.0%	0	0	0.0%
21405 Mororejo	4,358		0	0.0%	0	0	0.0%	0	0	0.0%	0	0	0.0%
21406 Margorejo	9,173		0	0.0%	0	0	0.0%	0	0	0.0%	0	0	0.0%
21407 Lumbungrejo	6,651		0	0.0%	0	0	0.0%	0	0	0.0%	0	0	0.0%
21408 Merdikorejo	5,480		0	0.0%	0	0	0.0%	0	0	0.0%	0	0	0.0%
21501 Bangunkerto	7,664		0	0.0%	0	0	0.0%	240	1,200	15.7%	240	1,200	15.7%
21502 Donokerto	7,017		0	0.0%	228	1,142	16.3%	0	0	0.0%	228	1,142	16.3%
21503 Girikerto	6,669		0	0.0%	0	0	0.0%	420	2,100	31.5%	420	2,100	31.5%
21504 Wonokerto	8,600		0	0.0%	57	286	3.3%	90	450	5.2%	147	736	8.6%
21601 Purwobinangun	6,790		0	0.0%	0	0	0.0%	80	400	5.9%	80	400	5.9%
21602 Candibinangun	4,862		0	0.0%	0	0	0.0%	450	2,250	46.3%	450	2,250	46.3%
21603 Harjobinangun	3,971		0	0.0%	57	286	7.2%	0	0	0.0%	57	286	7.2%
21604 Pakembinangun	5,449		0	0.0%	228	1,142	21.0%	260	1,300	23.9%	488	2,442	44.8%
21605 Hargobinangun	7,236		0	0.0%	0	0	0.0%	70	350	4.8%	70	350	4.8%
21701 Wukirsari	8,398		0	0.0%	0	0	0.0%	0	0	0.0%	0	0	0.0%
21702 Argomulyo	6,423		0	0.0%	67	335	5.2%	0	0	0.0%	67	335	5.2%
21703 Glagaharjo	3,213		0	0.0%	0	0	0.0%	0	0	0.0%	0	0	0.0%
21704 Kepuharjo	2,725		0	0.0%	0	0	0.0%	902	902	33.1%	902	902	33.1%
21705 Umbulharjo	4,022		0	0.0%	0	0	0.0%	1,170	1,170	29.1%	1,170	1,170	29.1%
30101 Poncosari	11,136		0	0.0%	117	585	5.2%	70	350	3.1%	187	935	8.4%
30102 Trimurti	16,307		0	0.0%	117	585	3.6%	0	0	0.0%	117	585	3.6%
30201 Gadinghari	8,861		0	0.0%	12	58	0.7%	0	0	0.0%	12	58	0.7%
30202 Gadingharjo	3,310		0	0.0%	23	117	3.5%	0	0	0.0%	23	117	3.5%
30203 Srigading	9,135		0	0.0%	4	19	0.2%	0	0	0.0%	4	19	0.2%
30204 Murtigading	7,430		0	0.0%	117	585	7.9%	0	0	0.0%	117	585	7.9%
30301 Tirtoharjo	2,538		0	0.0%	0	0	0.0%	0	0	0.0%	0	0	0.0%
30302 Parangtritis	7,265		0	0.0%	39	195	2.7%	140	700	9.6%	179	895	12.3%
30303 Donotirto	7,298		0	0.0%	17	87	1.2%	0	0	0.0%	17	87	1.2%
30304 Tirtosari	3,679		0	0.0%	4	22	0.6%	0	0	0.0%	4	22	0.6%
30305 Tirtomulyo	6,284		0	0.0%	4	22	0.3%	0	0	0.0%	4	22	0.3%
30401 Seloharjo	9,756		0	0.0%	0	0	0.0%	0	0	0.0%	0	0	0.0%
30402 Panjangrejo	8,545		0	0.0%	28	141	1.6%	0	0	0.0%	28	141	1.6%
30403 Srihandono	11,942		0	0.0%	11	54	0.5%	0	0	0.0%	11	54	0.5%
30501 Sidomulyo	11,136	325	1,625	14.6%	15	76	0.7%	0	0	0.0%	340	1,701	15.3%
30502 Mulyodadi	10,163		0	0.0%	28	141	1.4%	0	0	0.0%	28	141	1.4%
30503 Sumbermulyo	13,961		0	0.0%	43	217	1.6%	0	0	0.0%	43	217	1.6%
30601 Caturharjo	10,087		0	0.0%	0	0	0.0%	0	0	0.0%	0	0	0.0%
30602 Triharjo	11,917		0	0.0%	0	0	0.0%	0	0	0.0%	0	0	0.0%
30603 Gilangharjo	13,970		0	0.0%	7	33	0.2%	0	0	0.0%	7	33	0.2%
30604 Wijirejo	9,854		0	0.0%	77	384	3.9%	0	0	0.0%	77	384	3.9%
30701 Palbapang	11,987		0	0.0%	11	54	0.5%	0	0	0.0%	11	54	0.5%
30702 Ringinharjo	6,840		0	0.0%	341	1,706	24.9%	0	0	0.0%	341	1,706	24.9%
30703 Bantul	14,522		0	0.0%	730	3,649	25.1%	0	0	0.0%	730	3,649	25.1%
30704 Tirirenggo	15,586		0	0.0%	0	0	0.0%	0	0	0.0%	0	0	0.0%
30705 Sapdodadi	5,719		0	0.0%	15	74	1.3%	0	0	0.0%	15	74	1.3%
30801 Patalan	10,588		0	0.0%	4	22	0.2%	0	0	0.0%	4	22	0.2%
30802 Canden	9,884		0	0.0%	0	0	0.0%	0	0	0.0%	0	0	0.0%
30803 Sumberagung	12,629		0	0.0%	59	297	2.4%	0	0	0.0%	59	297	2.4%
30804 Trimulyo	15,043		0	0.0%	598	2,989	19.9%	70	350	2.3%	668	3,339	22.2%
30901 Selopamioro	12,608		0	0.0%	0	0	0.0%	495	2,475	19.6%	495	2,475	19.6%
30902 Sriharjo	7,634		0	0.0%	0	0	0.0%	0	0	0.0%	0	0	0.0%
30903 Kebonagung	3,122		0	0.0%	0	0	0.0%	0	0	0.0%	0	0	0.0%
30904 Karangtengah	4,479		0	0.0%	6	30	0.7%	70	350	7.8%	76	380	8.5%
30905 Girirejo	4,108		0	0.0%	9	45	1.1%	0	0	0.0%	9	45	1.1%
30906 Karangtalun	2,632		0	0.0%	45	223	8.5%	0	0	0.0%	45	223	8.5%
30907 Imogiri	3,471		0	0.0%	45	223	6.4%	0	0	0.0%	45	223	6.4%
30908 Wukirsari	15,035		0	0.0%	45	223	1.5%	0	0	0.0%	45	223	1.5%

		Total Populatio n person	PDAM Yogyakarta			PDAM Sleman			Community System			Total		
			No. Conc.	Served Pop.	Service Ratio	No. Conc.	Served Pop.	Service Ratio	No. Conc.	Served Pop.	Service Ratio	No. Conc.	Served Pop.	Service Ratio
			nos.	person	%	nos.	person	%	nos.	person	%	nos.	person	%
31001	Mangunan	4,093	0	0.0%	0	0	0.0%	599	2,995	73.2%	599	2,995	73.2%	
31002	Muntuk	7,439	0	0.0%	0	0	0.0%	225	1,125	15.1%	225	1,125	15.1%	
31003	Dlingo	5,294	0	0.0%	97	486	9.2%	0	0	0.0%	97	486	9.2%	
31004	Temuwuh	6,347	0	0.0%	216	1,081	17.0%	50	250	3.9%	266	1,331	21.0%	
31005	Jatimulyo	5,844	0	0.0%	216	1,081	18.5%	277	1,385	23.7%	493	2,466	42.2%	
31006	Terong	5,115	0	0.0%	11	54	1.1%	175	875	17.1%	186	929	18.2%	
31101	Wonokromo	12,386	0	0.0%	0	0	0.0%	0	0	0.0%	0	0	0.0%	
31102	Pleret	10,476	0	0.0%	0	0	0.0%	0	0	0.0%	0	0	0.0%	
31103	Segoroyoso	7,132	0	0.0%	0	0	0.0%	0	0	0.0%	0	0	0.0%	
31104	Bawuran	4,979	0	0.0%	0	0	0.0%	170	850	17.1%	170	850	17.1%	
31105	Wonolelo	3,953	0	0.0%	0	0	0.0%	120	600	15.2%	120	600	15.2%	
31201	Sitimulyo	13,643	0	0.0%	0	0	0.0%	130	650	4.8%	130	650	4.8%	
31202	Srimulyo	13,799	0	0.0%	118	588	4.3%	120	600	4.3%	238	1,188	8.6%	
31203	Srimartani	12,752	0	0.0%	118	588	4.6%	100	500	3.9%	218	1,088	8.5%	
31301	Tamanan	10,341	0	0.0%	0	0	0.0%	0	0	0.0%	0	0	0.0%	
31302	Jagalan	3,061	0	0.0%	0	0	0.0%	0	0	0.0%	0	0	0.0%	
31303	Singosaren	3,151	0	0.0%	0	0	0.0%	0	0	0.0%	0	0	0.0%	
31304	Wirokerten	10,813	0	0.0%	0	0	0.0%	0	0	0.0%	0	0	0.0%	
31305	Jambidan	7,356	0	0.0%	0	0	0.0%	0	0	0.0%	0	0	0.0%	
31306	Potorono	9,518	0	0.0%	24	118	1.2%	0	0	0.0%	24	118	1.2%	
31307	Baturetno	13,705	0	0.0%	106	529	3.9%	0	0	0.0%	106	529	3.9%	
31308	Banguntapan	39,484	0	0.0%	106	529	1.3%	0	0	0.0%	106	529	1.3%	
31401	Pendowoharjo	19,938	0	0.0%	602	3,012	15.1%	0	0	0.0%	602	3,012	15.1%	
31402	Timbulharjo	18,686	0	0.0%	15	74	0.4%	0	0	0.0%	15	74	0.4%	
31403	Bangunharjo	25,988	0	0.0%	697	3,487	13.4%	0	0	0.0%	697	3,487	13.4%	
31404	Panggunharjo	31,083	0	0.0%	537	2,687	8.6%	0	0	0.0%	537	2,687	8.6%	
31501	Bangunjiwo	22,290	0	0.0%	1,040	5,199	23.3%	340	1,700	7.6%	1,380	6,899	31.0%	
31502	Tirtonimolo	20,761	0	0.0%	98	492	2.4%	0	0	0.0%	98	492	2.4%	
31503	Tamantirto	19,640	0	0.0%	490	2,451	12.5%	0	0	0.0%	490	2,451	12.5%	
31504	Ngestiharjo	34,436	0	0.0%	1,106	5,532	16.1%	0	0	0.0%	1,106	5,532	16.1%	
31601	Triwidadi	9,287	0	0.0%	0	0	0.0%	77	385	4.1%	77	385	4.1%	
31602	Sendangsari	10,109	0	0.0%	145	725	7.2%	70	350	3.5%	215	1,075	10.6%	
31603	Guwosari	9,918	0	0.0%	507	2,536	25.6%	40	200	2.0%	547	2,736	27.6%	
31701	Argodadi	9,634	0	0.0%	0	0	0.0%	150	750	7.8%	150	750	7.8%	
31702	Argorejo	11,401	0	0.0%	605	3,024	26.5%	30	150	1.3%	635	3,174	27.8%	
31703	Argosari	7,522	0	0.0%	151	756	10.1%	40	200	2.7%	191	956	12.7%	
31704	Argomulyo	13,450	0	0.0%	756	3,781	28.1%	40	200	1.5%	796	3,981	29.6%	

Source:

Estimation by JICA Study Team based on available information provided by PDAMs, PUs and interview with community people concerned.

Appendix 15.2 Distribution of Current Service Ratio



Appendix 15.3 Contents of Questionnaire Survey for Poverty Survey 2006 (English Translation)

1. Head of Household Name:

2. a. Total Family:
 b. Family Members:

3. Floor square of house m²

4. Floor type of house
 - a. low quality Floor made from soil/bamboo/wood
 - b. high quality Cement/Ceramic/wood

5. Wall type of house
 - a. low quality Bamboo/sago palm/wood
 - b. high quality wood / wall

6. Water Closet (Toilet)
 - a. Together/public/others
 - b. Own (private)

7. Drinking water source
 - a. well or unprotect water resource/river/rain water
 - b. bottled water/tap/pump/well or protect water source

8. Main Lighting
 - a. not electricity
 - b. electricity (PLN or non PLN)

9. Kinds of materials that used to daily cook?
 - a. Wood/Charcoal
 - b. Kerosene
 - c. Gas/Electricity

10. How many times per week the household buying meet/chicken/milk?
 - a. Never
 - b. One time
 - c. Two times and more

11. How many times per day the members of household eating?
- One
 - Two
 - Three and more
12. Regularly, how many new clothes those buy every members of household in a year?
- Never buying every last one year
 - One set
 - Two sets and more
13. If members of household ware sick, whether they have ability to go to polyclinic?
- Yes
 - No
14. Head of Household main work
- Plant rice and *palawija* (crops planted as second crop in dry season)
 - Plantation/Agriculture
 - Animal Husbandry
 - Fishery
 - Industry
 - Trading
 - Transportation
 - Service
 - Others
 - Not Working
15. Highest education level that finished by the head of household.
- Elementary School and below
 - Junior School
 - Senior High School and above
16. Whether the household own these things that the value is minimum Rp 500.000,00?
- | | | |
|---------------|--------|--------|
| a. Saving | 1. Yes | 2. No |
| b. Gold | 1. Yes | 2. No. |
| c. Color TV | 1. Yes | 2. No |
| d. Livestock | 1. Yes | 2. No |
| e. Motorcycle | 1. Yes | 2. No |

17. Is there any children (0-4 years old) in the house?

- a. Yes,persons
- b. No

18. Is there any family members age 6-18 years old in the house?

- a. Yes
- b. No (see question number 19)

If answer "Yes", still study :

Elementary	:persons
Junior School	:persons
High School	:persons

, not study :persons

19. Participation in Family Planning Program for female in 10-49 year marriage

- a. Still joining family planning program
- b. Not followed family planning program
- c. There is no one female in 10-49 year marriage in the family

20. Whether the household ever got business credit last year?

- a. Yes
- b. No

Appendix 15.4 Data from “Poverty Survey 2006”

	Code	Name of Desa/Kelurahan	Pop. in 2005	Estimated Nos. of HH	Nos of HH rated as Poor				HH rated as Poor (%)			
					Poverty Level			Total	Poverty Level			Total
					Somewhat Poor	Poor	Very Poor		Somewhat Poor	Poor	Very Poor	
(a)	(a)/5	(b)	(c)	(d)	(b) + (c) + (d)	(x)	(y)	(z)	(x) + (y) + (z)			
1	10101	Gedongkiwo	12,651	2,530	300	305	7	612	11.9	12.1	0.3	24.3
2	10102	Suryodiningratan	10,975	2,195	246	250	4	500	11.2	11.4	0.2	22.8
3	10103	Mantrijeron	9,923	1,985	164	204	7	375	8.3	10.3	0.4	19.0
4	10201	Patehan	5,058	1,012	143	162	6	311	14.1	16.0	0.6	30.7
5	10202	Panembahan	7,839	1,568	155	193	11	359	9.9	12.3	0.7	22.9
6	10203	Kadipaten	6,233	1,247	91	159	9	259	7.3	12.8	0.7	20.8
7	10301	Brontokusuman	11,649	2,330	239	227	21	487	10.3	9.7	0.9	20.9
8	10302	Keparakan	8,866	1,773	247	263	7	517	13.9	14.8	0.4	29.1
9	10303	Wirogunan	11,536	2,307	289	345	13	647	12.5	15.0	0.6	28.1
10	10401	Semaki	6,058	1,212	102	116	18	236	8.4	9.6	1.5	19.5
11	10402	Muja-muju	11,843	2,369	145	162	9	316	6.1	6.8	0.4	13.3
12	10403	Tahunan	10,787	2,157	157	216	20	393	7.3	10.0	0.9	18.2
13	10404	Warungboto	11,073	2,215	127	191	20	338	5.7	8.6	0.9	15.2
14	10405	Pandeyan	13,567	2,713	220	205	4	429	8.1	7.6	0.1	15.8
15	10406	Sorosutan	17,240	3,448	373	368	9	750	10.8	10.7	0.3	21.8
16	10407	Giwangan	7,042	1,408	204	209	2	415	14.5	14.8	0.1	29.4
17	10501	Rejowinangun	11,425	2,285	195	139	0	334	8.5	6.1	0.0	14.6
18	10502	Prenggan	10,909	2,182	252	290	9	551	11.5	13.3	0.4	25.2
19	10503	Purbayan	8,974	1,795	209	236	5	450	11.6	13.1	0.3	25.0
20	10601	Demangan	10,243	2,049	108	114	1	223	5.3	5.6	0.0	10.9
21	10602	Kotabaru	2,818	564	46	62	5	113	8.2	11.0	0.9	20.1
22	10603	Klitren	11,301	2,260	176	115	4	295	7.8	5.1	0.2	13.1
23	10604	Baciro	12,748	2,550	245	319	7	571	9.6	12.5	0.3	22.4
24	10605	Terban	10,350	2,070	181	274	2	457	8.7	13.2	0.1	22.0
25	10701	Suryatmajan	4,391	878	123	176	29	328	14.0	20.0	3.3	37.3
26	10702	Tegalpanggung	7,955	1,591	239	403	9	651	15.0	25.3	0.6	40.9
27	10703	Bausaran	6,294	1,259	191	228	11	430	15.2	18.1	0.9	34.2
28	10801	Gunungketur	4,576	915	106	107	2	215	11.6	11.7	0.2	23.5
29	10802	Purwokinanti	5,905	1,181	131	147	2	280	11.1	12.4	0.2	23.7
30	10901	Ngupasan	4,453	891	75	177	18	270	8.4	19.9	2.0	30.3
31	10902	Prawirodirjan	9,175	1,835	275	461	17	753	15.0	25.1	0.9	41.0
32	11001	Notoprajan	7,951	1,590	172	177	9	358	10.8	11.1	0.6	22.5
33	11002	Ngampilan	9,098	1,820	143	271	22	436	7.9	14.9	1.2	24.0
34	11101	Patangpuluhan	7,010	1,402	126	155	8	289	9.0	11.1	0.6	20.7
35	11102	Wirobrajan	10,093	2,019	139	246	4	389	6.9	12.2	0.2	19.3
36	11103	Pakuncen	10,293	2,059	194	218	5	417	9.4	10.6	0.2	20.2
37	11201	Pringgokusuman	10,636	2,127	404	437	3	844	19.0	20.5	0.1	39.6
38	11202	Sosromenduran	5,850	1,170	198	162	7	367	16.9	13.8	0.6	31.3
39	11301	Bumijo	10,302	2,060	204	335	11	550	9.9	16.3	0.5	26.7
40	11302	Gowongan	6,620	1,324	44	345	12	401	3.3	26.1	0.9	30.3
41	11303	Cokrodiningratan	8,534	1,707	210	219	5	434	12.3	12.8	0.3	25.4
42	11401	Kricak	13,396	2,679	330	549	20	899	12.3	20.5	0.7	33.5
43	11402	Karangwaru	10,208	2,042	202	254	8	464	9.9	12.4	0.4	22.7
44	11403	Tegalrejo	9,505	1,901	236	394	5	635	12.4	20.7	0.3	33.4
45	11404	Bener	4,979	996	126	204	3	333	12.7	20.5	0.3	33.5
46	20101	Sumberahayu	5,722	1,144	106	258	39	403	9.3	22.6	3.4	35.3
47	20102	Sumbersari	6,873	1,375	134	326	67	527	9.7	23.7	4.9	38.3
48	20103	Sumberagung	10,139	2,028	194	361	60	615	9.6	17.8	3.0	30.4
49	20104	Sumberarum	6,053	1,211	115	322	71	508	9.5	26.6	5.9	42.0
50	20201	Sendangmulyo	6,537	1,307	105	565	61	731	8.0	43.2	4.7	55.9
51	20202	Sendangarum	3,237	647	68	155	35	258	10.5	24.0	5.4	39.9
52	20203	Sendangrejo	7,100	1,420	152	556	86	794	10.7	39.2	6.1	56.0
53	20204	Sendangagung	3,506	886	124	625	137	886	14.0	70.5	15.5	100.0
54	20205	Sendangsari	7,228	1,446	59	224	207	490	4.1	15.5	14.3	33.9
55	20301	Margodadi	7,133	1,427	132	430	212	774	9.3	30.1	14.9	54.3
56	20302	Margoluwih	8,173	1,635	271	489	70	830	16.6	29.9	4.3	50.8
57	20303	Margomulyo	10,076	2,015	110	644	230	984	5.5	32.0	11.4	48.9
58	20304	Margoagung	8,248	1,650	135	462	301	898	8.2	28.0	18.2	54.4
59	20305	Margokaton	6,238	1,248	65	221	52	338	5.2	17.7	4.2	27.1
60	20401	Sidorejo	5,668	1,134	100	217	4	321	8.8	19.1	0.4	28.3
61	20402	Sidoluhur	8,774	1,755	126	326	42	494	7.2	18.6	2.4	28.2
62	20403	Sidomulyo	5,474	1,095	89	327	32	448	8.1	29.9	2.9	40.9
63	20404	Sidoagung	7,398	1,480	136	284	34	454	9.2	19.2	2.3	30.7
64	20405	Sidokarto	8,664	1,733	159	222	54	435	9.2	12.8	3.1	25.1
65	20406	Sidoarum	13,799	2,760	163	348	51	562	5.9	12.6	1.8	20.3
66	20407	Sidomoyo	6,433	1,287	125	347	36	508	9.7	27.0	2.8	39.5
67	20501	Balecatat	17,225	3,445	178	409	198	785	5.2	11.9	5.7	22.8
68	20502	Ambarketawang	19,424	3,885	319	328	33	680	8.2	8.4	0.8	17.4
69	20503	Banyuraden	16,247	3,249	175	381	81	637	5.4	11.7	2.5	19.6
70	20504	Nogotirto	17,576	3,515	329	303	30	662	9.4	8.6	0.9	18.9
71	20505	Trihanggo	14,657	2,931	282	277	19	578	9.6	9.5	0.6	19.7
72	20601	Tirtoadi	7,948	1,590	238	365	104	707	15.0	23.0	6.5	44.5
73	20602	Sumberadi	12,302	2,460	202	587	289	1,078	8.2	23.9	11.7	43.8
74	20603	Tlogoadi	10,262	2,052	274	395	33	702	13.4	19.2	1.6	34.2
75	20604	Sendangadi	13,443	2,689	285	397	106	788	10.6	14.8	3.9	29.3
76	20605	Sinduadi	42,561	8,512	600	454	63	1,117	7.0	5.3	0.7	13.0
77	20701	Caturtunggal	86,177	17,235	563	399	48	1,010	3.3	2.3	0.3	5.9
78	20702	Maguwoharjo	35,982	7,196	333	441	83	857	4.6	6.1	1.2	11.9
79	20703	Condongcatur	53,294	10,659	295	314	34	643	2.8	2.9	0.3	6.0
80	20801	Sendangtirto	12,705	2,541	328	313	43	684	12.9	12.3	1.7	26.9
81	20802	Tegaltirto	8,695	1,739	101	245	123	469	5.8	14.1	7.1	27.0
82	20803	Jogotirto	7,752	1,550	429	282	9	720	27.7	18.2	0.6	46.5
83	20804	Kalitirto	10,612	2,122	212	327	65	604	10.0	15.4	3.1	28.5

	Code	Name of Desa/Kelrahan	Pop. in 2005	Estimated Nos. of HH	Nos of HH rated as Poor				HH rated as Poor (%)			
					Poverty Level			Total	Poverty Level			Total
					Somewhat Poor	Poor	Very Poor		Somewhat Poor	Poor	Very Poor	
(a)	(a)/5	(b)	(c)	(d)	(b) + (c) + (d)	(x)	(y)	(z)	(x) + (y) + (z)			
84	20901	Sumberharjo	11,516	2,303	198	375	176	749	8.6	16.3	7.6	32.5
85	20902	Wukirharjo	2,204	441	15	184	163	362	3.4	41.7	37.0	82.1
86	20903	Gayamharjo	3,939	788	43	410	147	600	5.5	52.0	18.7	76.2
87	20904	Sambirojo	4,596	919	71	348	105	524	7.7	37.9	11.4	57.0
88	20905	Madurojo	9,921	1,984	200	477	107	784	10.1	24.0	5.4	39.5
89	20906	Bokoharjo	10,124	2,025	250	362	90	702	12.3	17.9	4.4	34.6
90	21001	Purwomartani	28,531	5,706	383	662	94	1,139	6.7	11.6	1.6	19.9
91	21002	Tirtomartani	12,906	2,581	193	495	161	849	7.5	19.2	6.2	32.9
92	21003	Tamanmartani	12,708	2,542	233	422	134	789	9.2	16.6	5.3	31.1
93	21004	Selomartani	9,517	1,903	163	465	103	731	8.6	24.4	5.4	38.4
94	21101	Wedomartani	22,900	4,580	307	481	45	833	6.7	10.5	1.0	18.2
95	21102	Widodomartani	6,317	1,263	102	351	46	499	8.1	27.8	3.6	39.5
96	21103	Bimomartani	5,351	1,070	102	287	162	551	9.5	26.8	15.1	51.4
97	21104	Sindumartani	6,319	1,264	108	352	92	552	8.5	27.8	7.3	43.6
98	21105	Umbulmartani	9,251	1,850	138	277	56	471	7.5	15.0	3.0	25.5
99	21201	Sariharjo	18,998	3,800	193	140	31	364	5.1	3.7	0.8	9.6
100	21202	Donoharjo	7,013	1,403	110	191	25	326	7.8	13.6	1.8	23.2
101	21203	Sardonoharjo	15,673	3,135	139	268	65	472	4.4	8.5	2.1	15.0
102	21204	Sukoharjo	12,190	2,438	82	386	107	575	3.4	15.8	4.4	23.6
103	21205	Sinduharjo	16,165	3,233	114	172	35	321	3.5	5.3	1.1	9.9
104	21206	Minomartani	13,567	2,713	75	88	15	178	2.8	3.2	0.6	6.6
105	21301	Caturharjo	11,427	2,285	187	800	450	1,437	8.2	35.0	19.7	62.9
106	21302	Triharjo	13,664	2,733	278	678	375	1,331	10.2	24.8	13.7	48.7
107	21303	Tridadi	12,261	2,452	410	456	85	951	16.7	18.6	3.5	38.8
108	21304	Pandowoharjo	8,746	1,749	164	520	129	813	9.4	29.7	7.4	46.5
109	21305	Trimulyo	7,466	1,493	106	351	75	532	7.1	23.5	5.0	35.6
110	21401	Banyurejo	6,675	1,335	33	326	186	545	2.5	24.4	13.9	40.8
111	21402	Tambakrejo	3,987	797	15	327	99	441	1.9	41.0	12.4	55.3
112	21403	Sumberejo	3,682	736	61	169	140	370	8.3	23.0	19.0	50.3
113	21404	Pondokrejo	5,153	1,031	68	352	163	583	6.6	34.1	15.8	56.5
114	21405	Mororejo	4,358	872	54	346	111	511	6.2	39.7	12.7	58.6
115	21406	Margorejo	9,173	1,835	191	395	49	635	10.4	21.5	2.7	34.6
116	21407	Lumbungrejo	6,651	1,330	92	233	45	370	6.9	17.5	3.4	27.8
117	21408	Merdikorejo	5,480	1,096	106	348	80	534	9.7	31.8	7.3	48.8
118	21501	Bangunkerto	7,664	1,533	89	311	137	537	5.8	20.3	8.9	35.0
119	21502	Donokerto	7,017	1,403	156	384	54	594	11.1	27.4	3.8	42.3
120	21503	Girikerto	6,669	1,334	104	319	79	502	7.8	23.9	5.9	37.6
121	21504	Wonokerto	8,600	1,720	69	308	90	467	4.0	17.9	5.2	27.1
122	21601	Purwobinangun	6,790	1,358	38	113	10	161	2.8	8.3	0.7	11.8
123	21602	Candibinangun	4,862	972	108	157	19	284	11.1	16.2	2.0	29.3
124	21603	Harjobinangun	3,971	794	115	159	40	314	14.5	20.0	5.0	39.5
125	21604	Pakembinangun	5,449	1,090	88	123	17	228	8.1	11.3	1.6	21.0
126	21605	Hargobinangun	7,236	1,447	62	214	91	367	4.3	14.8	6.3	25.4
127	21701	Wukirsari	8,398	1,680	143	769	298	1,210	8.5	45.8	17.7	72.0
128	21702	Argomulyo	6,423	1,285	187	503	115	805	14.6	39.1	8.9	62.6
129	21703	Glagaharjo	3,213	643	70	327	26	423	10.9	50.9	4.0	65.8
130	21704	Kepuharjo	2,725	545	73	175	23	271	13.4	32.1	4.2	49.7
131	21705	Umbulharjo	4,022	804	88	289	33	410	10.9	35.9	4.1	50.9
132	30101	Poncosari	11,136	2,227	373	577	65	1,015	16.7	25.9	2.9	45.5
133	30102	Trimurti	16,307	3,261	490	815	129	1,434	15.0	25.0	4.0	44.0
134	30201	Gadingsari	8,861	1,772	259	625	144	1,028	14.6	35.3	8.1	58.0
135	30202	Gadingharjo	3,310	662	36	162	108	306	5.4	24.5	16.3	46.2
136	30203	Srigading	9,135	1,827	201	417	140	758	11.0	22.8	7.7	41.5
137	30204	Murtigading	7,430	1,486	360	498	42	900	24.2	33.5	2.8	60.5
138	30301	Tirtohargo	2,538	508	5	80	72	157	1.0	15.7	14.2	30.9
139	30302	Parangtritis	7,265	1,453	22	158	87	267	1.5	10.9	6.0	18.4
140	30303	Donotirto	7,298	1,460	161	214	47	422	11.0	14.7	3.2	28.9
141	30304	Tirtosari	3,679	736	62	167	83	312	8.4	22.7	11.3	42.4
142	30305	Tirtomulyo	6,284	1,257	66	326	92	484	5.3	25.9	7.3	38.5
143	30401	Seloharjo	9,756	1,951	275	550	63	888	14.1	28.2	3.2	45.5
144	30402	Panjangrejo	8,545	1,709	268	363	46	677	15.7	21.2	2.7	39.6
145	30403	Srihandono	11,942	2,388	335	531	134	1,000	14.0	22.2	5.6	41.8
146	30501	Sidomulyo	11,136	2,227	216	572	191	979	9.7	25.7	8.6	44.0
147	30502	Mulyodadi	10,163	2,033	261	475	134	870	12.8	23.4	6.6	42.8
148	30503	Sumbermulyo	13,961	2,792	406	610	90	1,106	14.5	21.8	3.2	39.5
149	30601	Caturharjo	10,087	2,017	474	695	75	1,244	23.5	34.5	3.7	61.7
150	30602	Triharjo	11,917	2,383	253	761	105	1,119	10.6	31.9	4.4	46.9
151	30603	Gilangharjo	13,970	2,794	268	952	362	1,582	9.6	34.1	13.0	56.7
152	30604	Wijirejo	9,854	1,971	296	508	31	835	15.0	25.8	1.6	42.4
153	30701	Palbapang	11,987	2,397	315	460	77	852	13.1	19.2	3.2	35.5
154	30702	Ringinharjo	6,840	1,368	171	244	78	493	12.5	17.8	5.7	36.0
155	30703	Bantul	14,522	2,904	270	677	52	999	9.3	23.3	1.8	34.4
156	30704	Trirenggo	15,586	3,117	280	511	237	1,028	9.0	16.4	7.6	33.0
157	30705	Sapodadi	5,719	1,144	140	326	14	480	12.2	28.5	1.2	41.9
158	30801	Patalan	10,588	2,118	227	461	80	768	10.7	21.8	3.8	36.3
159	30802	Canden	9,884	1,977	210	341	174	725	10.6	17.2	8.8	36.6
160	30803	Sumberagung	12,629	2,526	310	411	94	815	12.3	16.3	3.7	32.3
161	30804	Trimulyo	15,043	3,009	243	571	130	944	8.1	19.0	4.3	31.4

	Code	Name of Desa/Kelurahan	Pop. in 2005	Estimated Nos. of HH	Nos of HH rated as Poor				HH rated as Poor (%)			
					Poverty Level			Total	Poverty Level			Total
					Somewhat Poor	Poor	Very Poor		Somewhat Poor	Poor	Very Poor	
(a)	(a)/5	(b)	(c)	(d)	(b) + (c) + (d)	(x)	(y)	(z)	(x) + (y) + (z)			
162	30901	Selopamioro	12,608	2,522	300	946	463	1,709	11.9	37.5	18.4	67.8
163	30902	Sriharjo	7,634	1,527	267	367	63	697	17.5	24.0	4.1	45.6
164	30903	Kebonagung	3,122	624	98	135	43	276	15.7	21.6	6.9	44.2
165	30904	Karangtengah	4,479	896	194	323	69	586	21.7	36.0	7.7	65.4
166	30905	Girirejo	4,108	822	131	236	27	394	15.9	28.7	3.3	47.9
167	30906	Karangtalun	2,632	526	94	119	17	230	17.9	22.6	3.2	43.7
168	30907	Imogiri	3,471	694	74	155	26	255	10.7	22.3	3.7	36.7
169	30908	Wukirsari	15,035	3,007	565	864	109	1,538	18.8	28.7	3.6	51.1
170	31001	Mangunan	4,093	819	38	294	42	374	4.6	35.9	5.1	45.6
171	31002	Muntuk	7,439	1,488	120	569	80	769	8.1	38.2	5.4	51.7
172	31003	Dlingo	5,294	1,059	134	310	33	477	12.7	29.3	3.1	45.1
173	31004	Temuwuh	6,347	1,269	64	370	38	472	5.0	29.2	3.0	37.2
174	31005	Jatimulyo	5,844	1,169	64	574	25	663	5.5	49.1	2.1	56.7
175	31006	Terong	5,115	1,023	146	352	33	531	14.3	34.4	3.2	51.9
176	31101	Wonokromo	12,386	2,477	370	497	83	950	14.9	20.1	3.4	38.4
177	31102	Pleret	10,476	2,095	514	439	59	1,012	24.5	21.0	2.8	48.3
178	31103	Segoroyoso	7,132	1,426	182	347	49	578	12.8	24.3	3.4	40.5
179	31104	Bawuran	4,979	996	186	382	48	616	18.7	38.4	4.8	61.9
180	31105	Wonolelo	3,953	791	252	282	32	566	31.9	35.7	4.0	71.6
181	31201	Sitimulyo	13,643	2,729	527	614	110	1,251	19.3	22.5	4.0	45.8
182	31202	Srimulyo	13,799	2,760	751	550	243	1,544	27.2	19.9	8.8	55.9
183	31203	Srimartani	12,752	2,550	284	878	240	1,402	11.1	34.4	9.4	54.9
184	31301	Tamanan	10,341	2,068	402	394	36	832	19.4	19.1	1.7	40.2
185	31302	Jagalan	3,061	612	133	112	6	251	21.7	18.3	1.0	41.0
186	31303	Singosaren	3,151	630	133	65	12	210	21.1	10.3	1.9	33.3
187	31304	Wirokerten	10,813	2,163	284	388	57	729	13.1	17.9	2.6	33.6
188	31305	Jambidan	7,356	1,471	281	335	79	695	19.1	22.8	5.4	47.3
189	31306	Potorono	9,518	1,904	226	331	32	589	11.9	17.4	1.7	31.0
190	31307	Baturetno	13,705	2,741	457	305	43	805	16.7	11.1	1.6	29.4
191	31308	Banguntapan	39,484	7,897	1,039	349	26	1,414	13.2	4.4	0.3	17.9
192	31401	Pendowoharjo	19,938	3,988	586	449	92	1,127	14.7	11.3	2.3	28.3
193	31402	Timbulharjo	18,686	3,737	660	804	50	1,514	17.7	21.5	1.3	40.5
194	31403	Bangunharjo	25,988	5,198	472	1,244	162	1,878	9.1	23.9	3.1	36.1
195	31404	Panggungharjo	31,083	6,217	727	613	79	1,419	11.7	9.9	1.3	22.9
196	31501	Bangunjiwo	22,290	4,458	256	1,023	477	1,756	5.7	22.9	10.7	39.3
197	31502	Tirtonimolo	20,761	4,152	483	932	76	1,491	11.6	22.4	1.8	35.8
198	31503	Tamantirto	19,640	3,928	418	698	63	1,179	10.6	17.8	1.6	30.0
199	31504	Ngestiharjo	34,436	6,887	835	648	45	1,528	12.1	9.4	0.7	22.2
200	31601	Triwidadi	9,287	1,857	134	455	93	682	7.2	24.5	5.0	36.7
201	31602	Sendangsari	10,109	2,022	403	474	81	958	19.9	23.4	4.0	47.3
202	31603	Guwosari	9,918	1,984	216	390	56	662	10.9	19.7	2.8	33.4
203	31701	Argodadi	9,634	1,927	199	730	275	1,204	10.3	37.9	14.3	62.5
204	31702	Argorejo	11,401	2,280	147	400	62	609	6.4	17.5	2.7	26.6
205	31703	Argosari	7,522	1,504	175	440	127	742	11.6	29.3	8.4	49.3
206	31704	Argomulyo	13,450	2,690	214	457	64	735	8.0	17.0	2.4	27.4

* "HH" stands for "household"

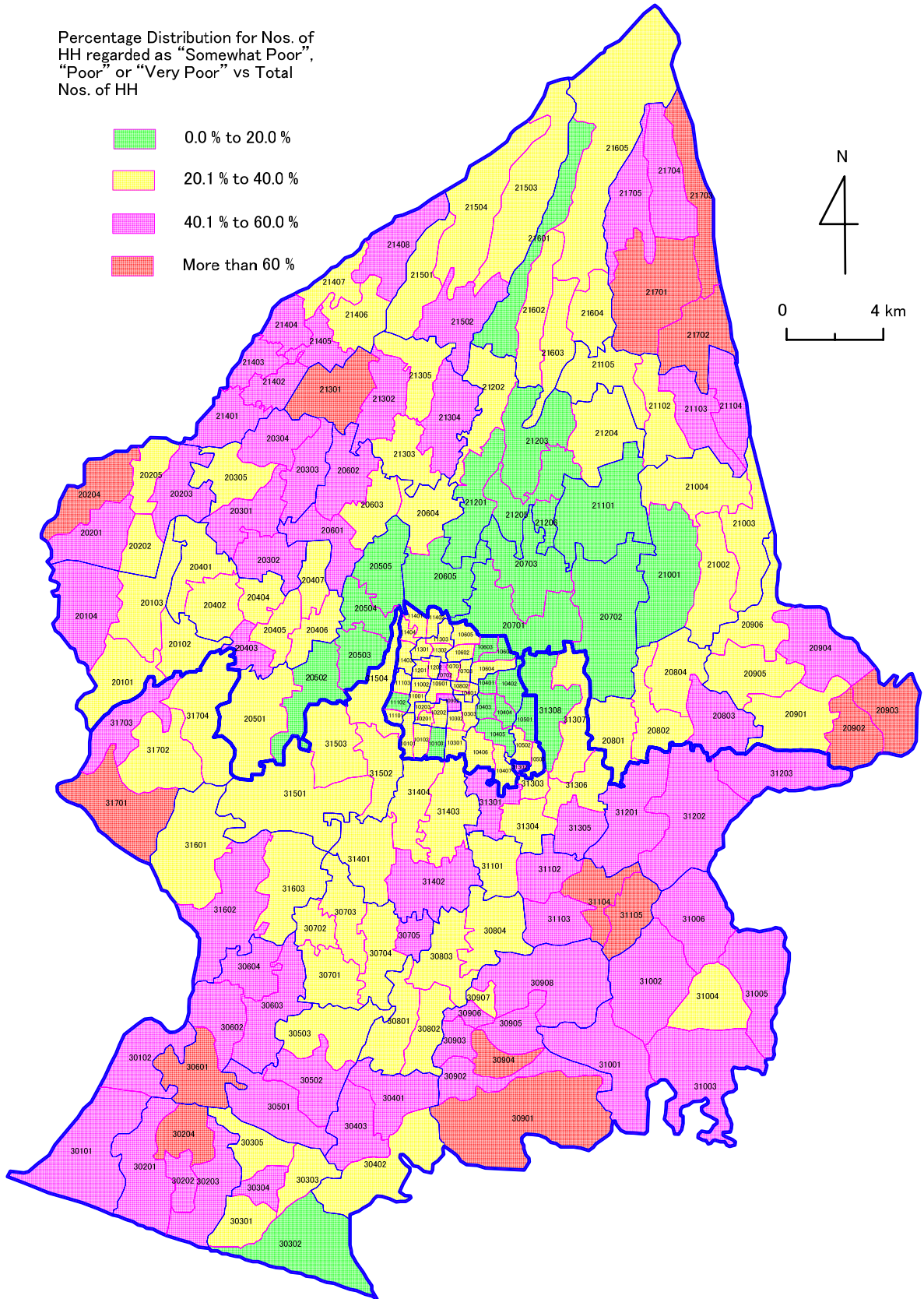
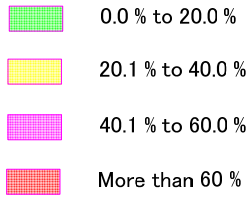
* Numbers of total HH in each Kelurahan/Desa are estimated based on nationwide sensus conducted in 2005, assuming that there are 5 persons in each HH on average.

* Number of total HH in "xxxxxx" is compensated (because if the total number of poverty group is multiplied by 5 persons, it surpasses the census data)

* Number of HH rated as "somewhat poor", "poor" or "very poor" is based on the data from "Poverty Survey in 2006"

Appendix 15.5 Poverty Distribution Map

Percentage Distribution for Nos. of HH regarded as "Somewhat Poor", "Poor", or "Very Poor" vs Total Nos. of HH



Appendix 15.6 Water Charge in Community Water Supply System

ID No. in Map	Kabupaten	Kecamatan	Desa	Name of System	Contact Person	Tariff Structure	Rp. 10m ³ /month
7	Bantul	Dlingo	Mangunan	Kanigoro	Mr. Wardani 081-518-87983	Meter in some HH For HH which has meter: Rp.500 /m ³ No registration fee	5,000
10	Bantul	Dlingo	Mangunan	Lemahabang	Mr. Ngatio 085-292-596487	Approx. Rp.15,000/HH/month No registration fee Interviewee told he used 125m ³ /month recently	15,000
11	Bantul	Dlingo	Mangunan	Mangunan	Mr. Arief 081-215-22185	Meter in each HH Rp.2,800 /month for Basic Charge + Rp.1000/m ³	12,800
20	Bantul	Dlingo	Terong	Rejosari		Registration fee: Rp 5,000Rp./HH Rp. 1,000/month as a fixed rate Water revenue is sufficient for normal O&M	1,000
22	Bantul	Dlingo	Terong	Terong I	Mr. Ribut, WO 085-292-024445	Meter in each HH Rp/10,000 for 1st 10m ³ Rp.1,250/m ³ for 10~20m ³ Rp.1,500/m ³ for 20~30m ³ Unit price steps up Rp.250 every 10m ³	10,000
33	Bantul	Kasihlan	Bangunjiwo	Bangen Bibis	Mr. Sarji, Leader of WO, 081-229-67972, (0274)788-3022	Registration fee: Rp.100,000Rp./HH House connection installation borne by HH Collected according to electricity consumption Rp.8,000~10,000/HH 50 % amount for O&M of water supply facility Collected by WO leader Constructed by PU O&M by co	10,000
45	Bantul	Pajangan	Triwidadi	Jojoran		Registration fee: None Fixed charge: Rp.15,000/month Revenue is sufficient for daily O&M	15,000
48	Bantul	Piyungan	Sitimulyo	Pagergunun	Mr. Subiana, WO 085-228-976420	Registration fee: None House connection installation borne by HH Fixed charge: Rp.5,000/month Collected by WO leader	5,000
61	Bantul	Sedayu	Argorejo	Metes	Mr. Sutiman, WO 081-392-536627	Registration fee: non House connection installation borne by HH Rp.4,000 per supply to one HU (it takes 7h for filling one HU)	13,000
79	Sleman	Pakem	Candibinang	Nepen	Mr. Widodo, Leader of Village & WO 081-667-2064	Registration: Rp.50,000 Fixed Rate: Rp.2,000/month/HH	2,000
94	Sleman	Seyengan	Margoluwih	Klangkapan II	Mr. Suratijo, & Mr. Dukuh 0274-788-6173	Registration: Rp.200,000 Fixed Rate: Rp.5,000/month/HH	5,000
95	Sleman	Turi	Bangunkerto	Bangunsari I	Mr. Nurikhwan, WO 081-7545-2943	Registration: Rp.50,000 Fixed Rate: Rp.1,000/month/HH	1,000
104	Yogyakarta	Jetis	Code Utara	UAB Titra Kencana		Meter in each HH Registration: Rp.600,000 Rp.9,000 for 1st 15m ³ plus, Rp.700/m ³ for 15~30m ³ Rp.1000/m ³ for more than 30m ³	9,000

Average 7,985

Note:

PDAM Sleman
PDAM Bantul

Rp. 1,500/m³ for first 10m³ (for Category A1)
Rp. 1,000/m³ for first 10m³ (for Category A1)