

Figure 2.5.21 Registered Maximal Values of Indicator Parameters in Groundwater

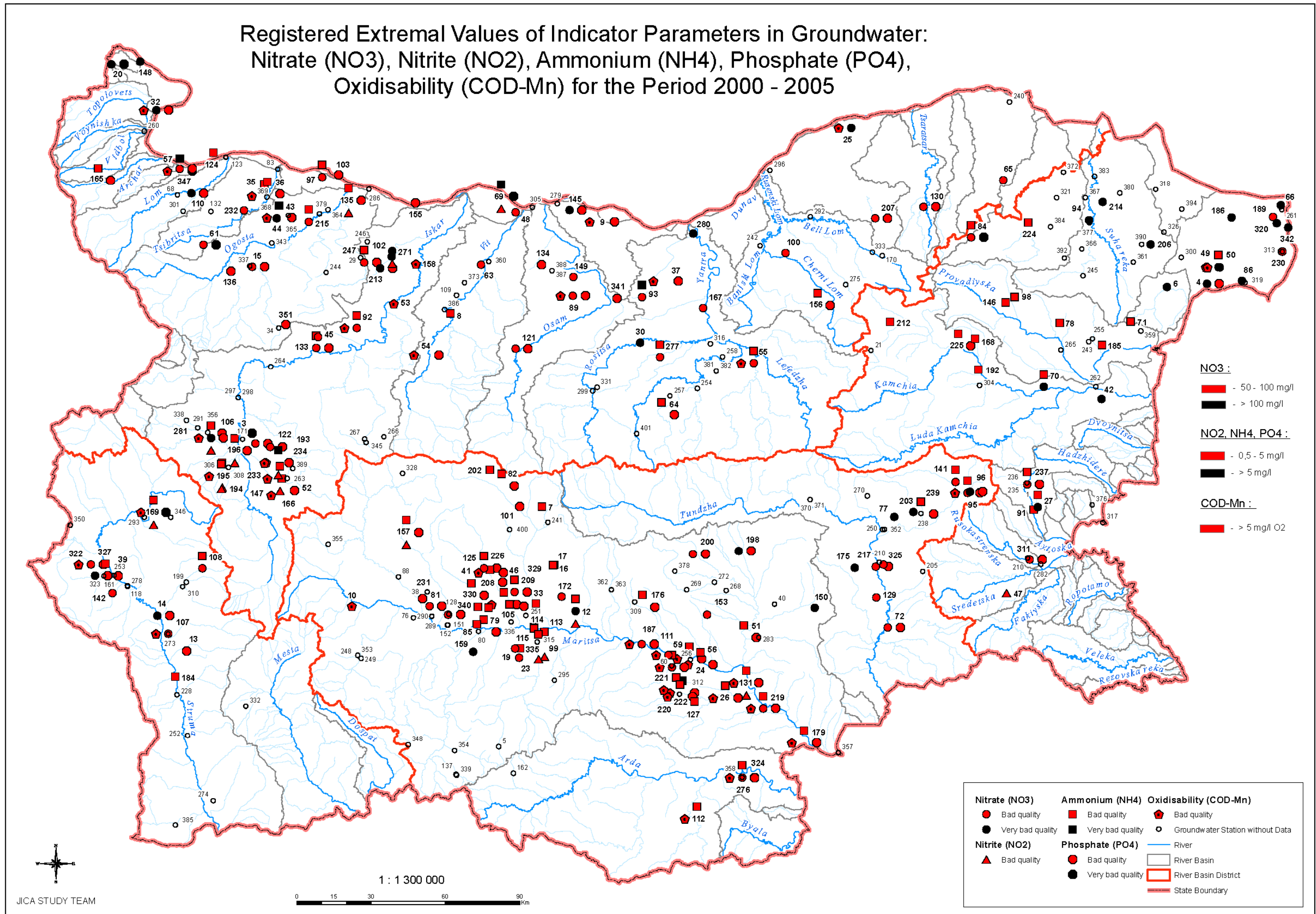


Figure 2.5.22 Registered Maximal Values of Indicator Parameters in Groundwater

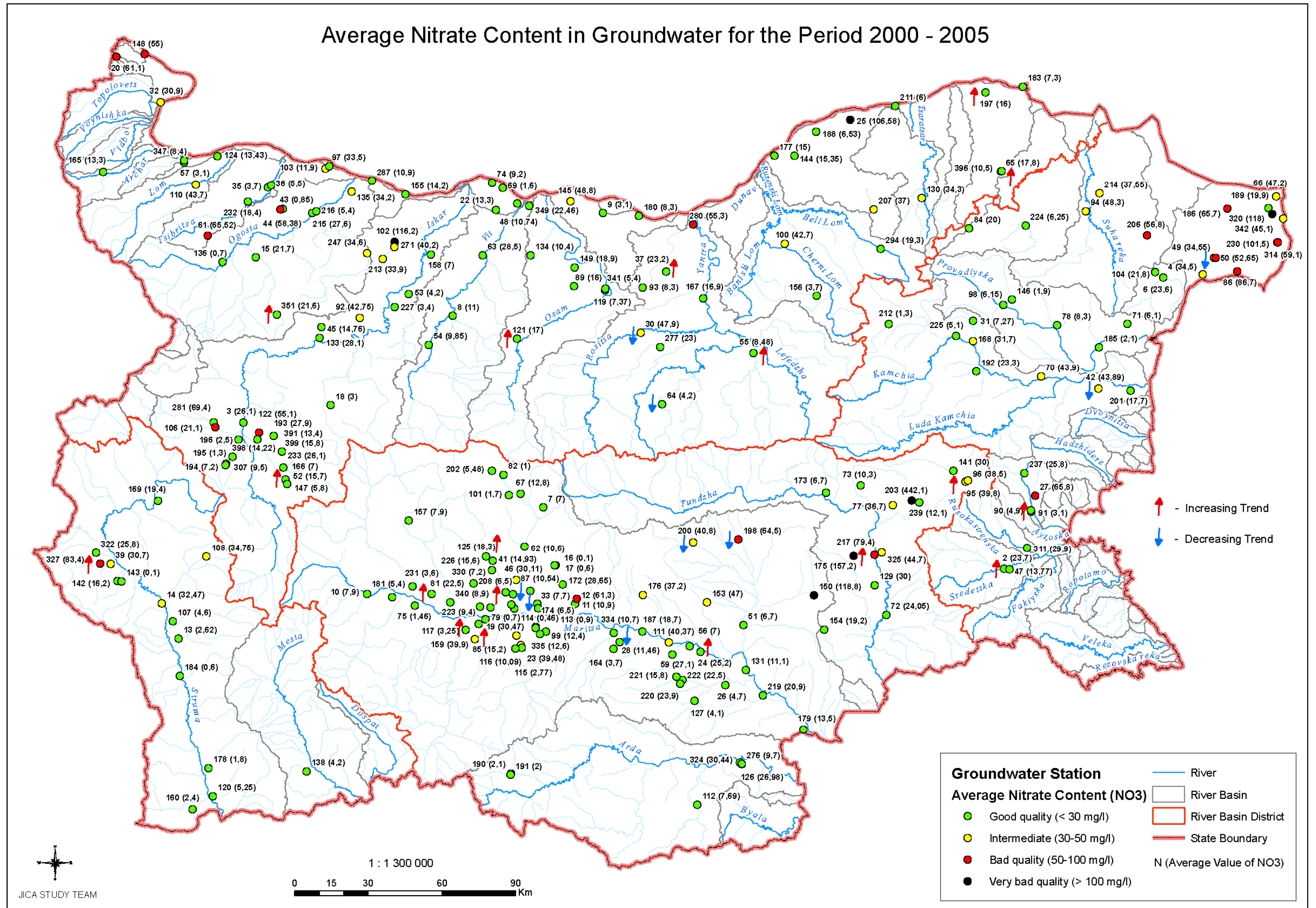


Figure 2.5.23 Average Nitrate Content in Groundwater for the Period 2000 - 2005

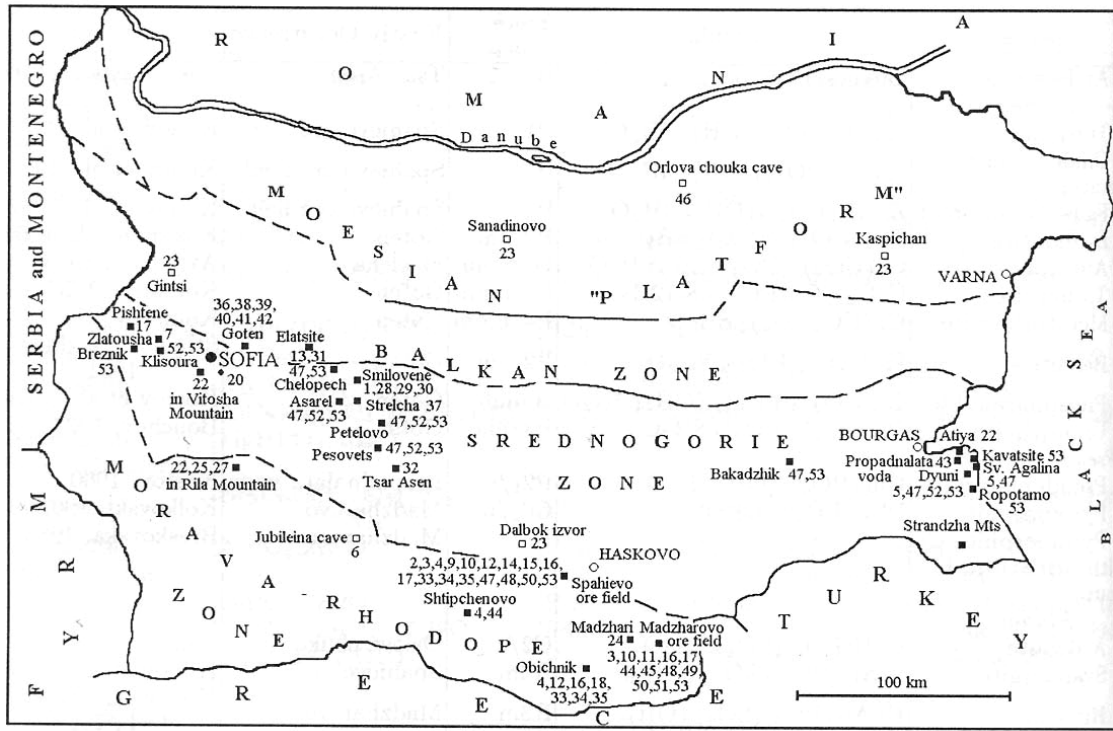


Figure 2.5.24 Main Occurrences of Phosphate Minerals in Bulgaria (A.Y. Kunov, 2005)

■	- in magmatic, metamorphic, pegmatitic and hydrothermally altered rocks
□	- in phosphorites and in caves
◇	- in diagenetic conditions

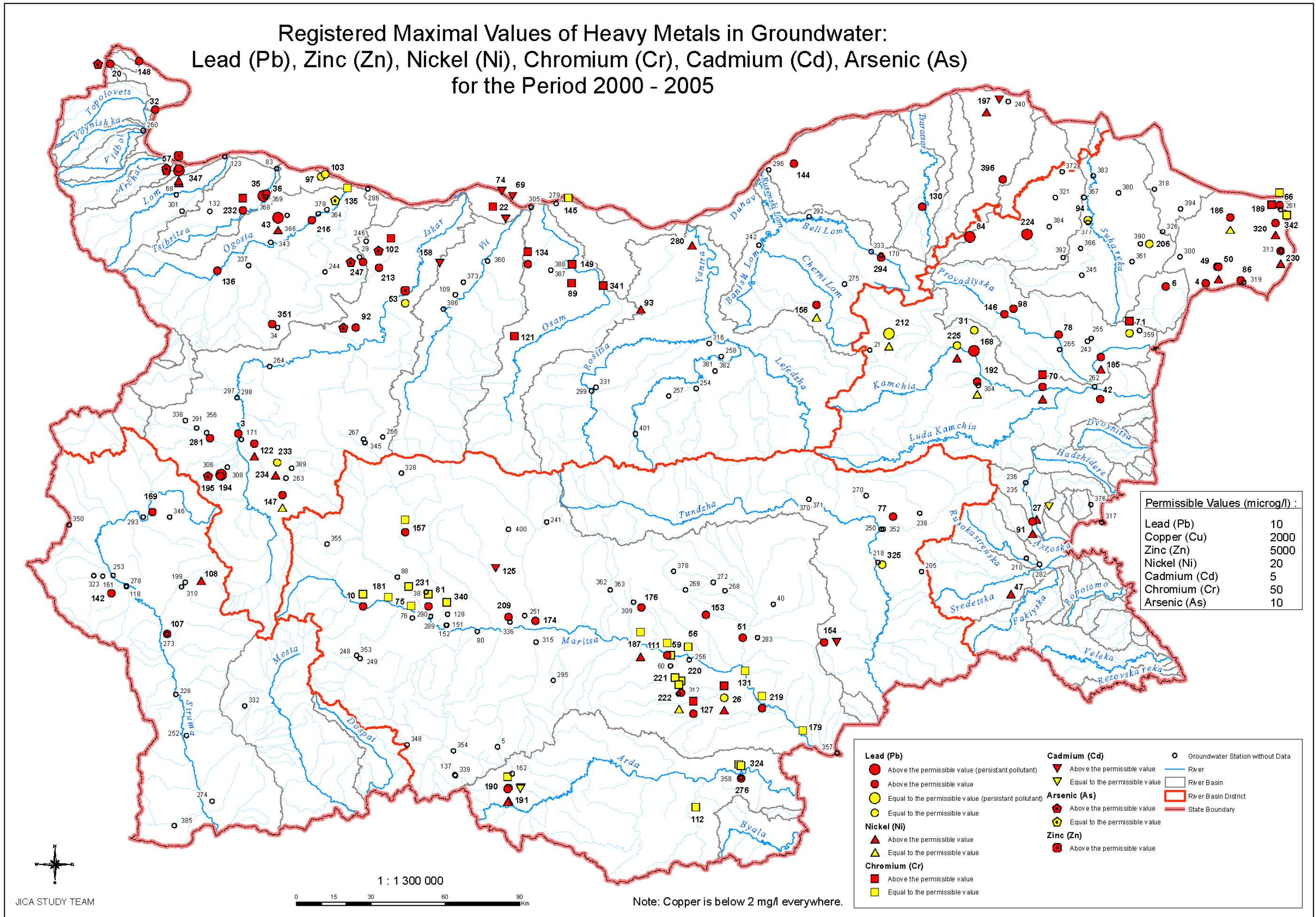


Figure 2.5.25 Registered Maximal Values of Heavy Metals in Groundwater



Figure 2.5.26 Manganese Content in Groundwater (Kehajov, 1986)

1 – below 0.010 mg/l	3 – from 0.030 mg/l to 0.050 mg/l
2 – from 0.010 mg/l to 0.030 mg/l	4 – above 0.050 mg/l

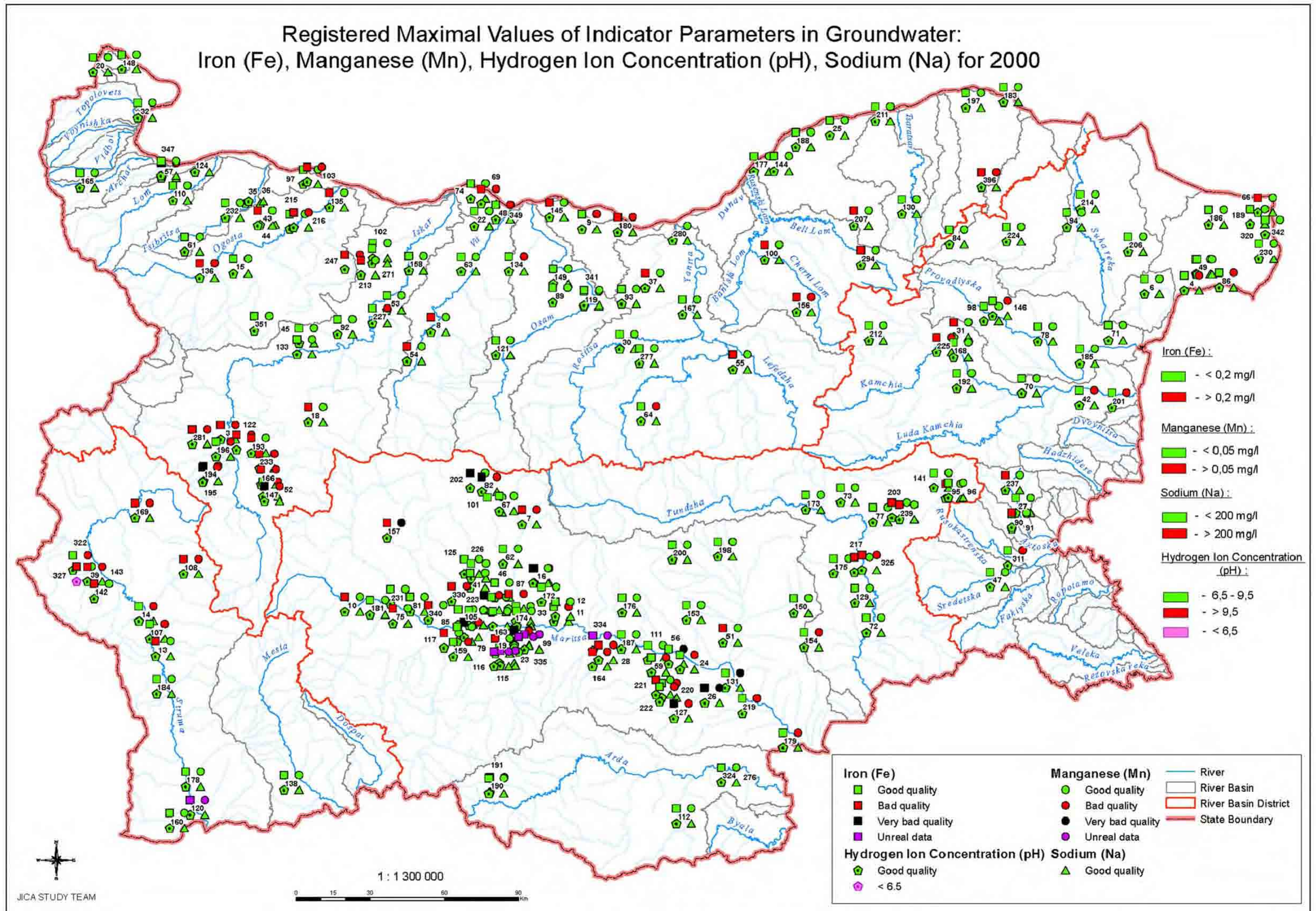


Figure 2.5.27 Registered Maximal Values of Heavy Metals in Groundwater

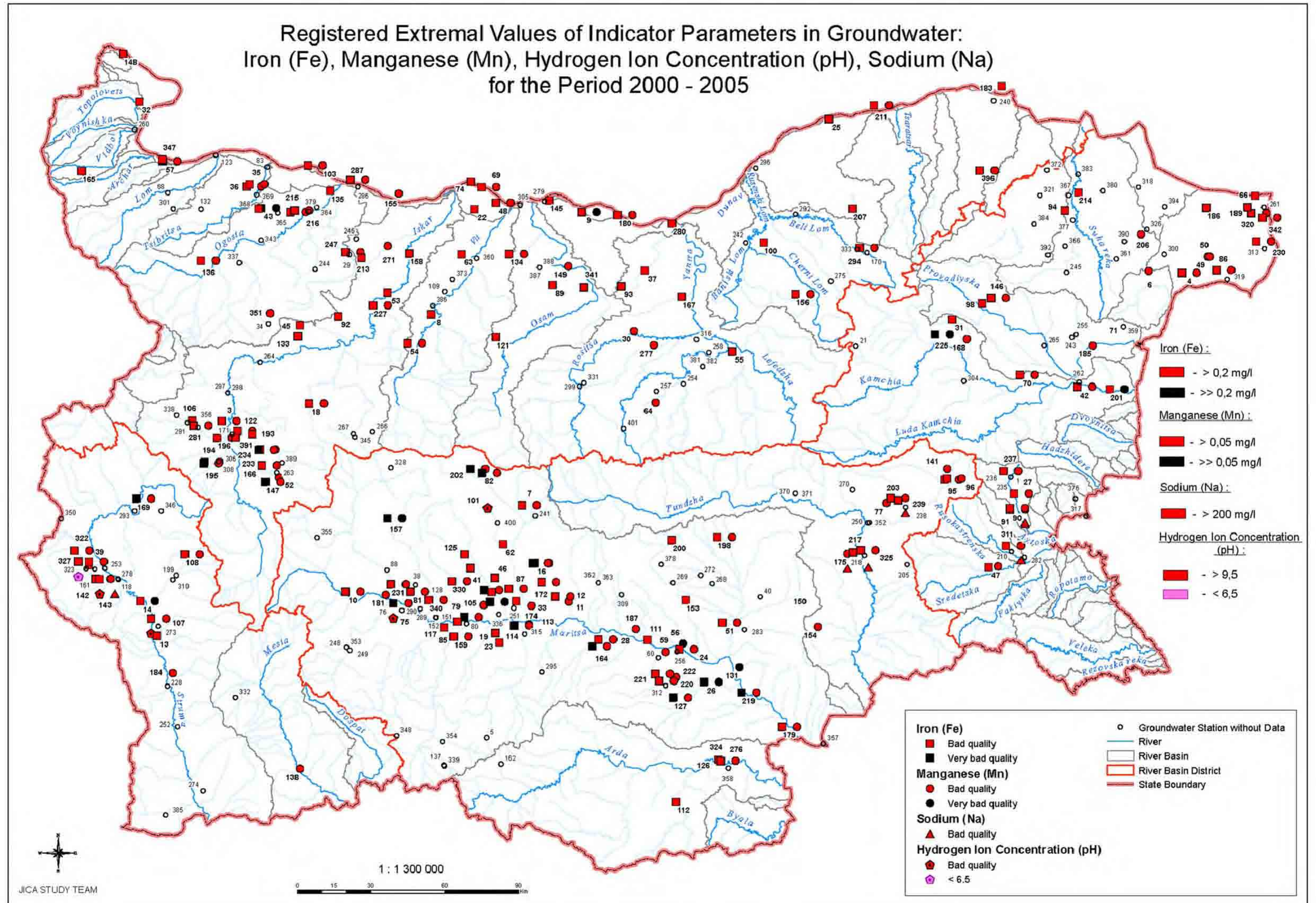


Figure 2.5.28 Registered Maximal Values of Heavy Metals in Groundwater

DUMMY

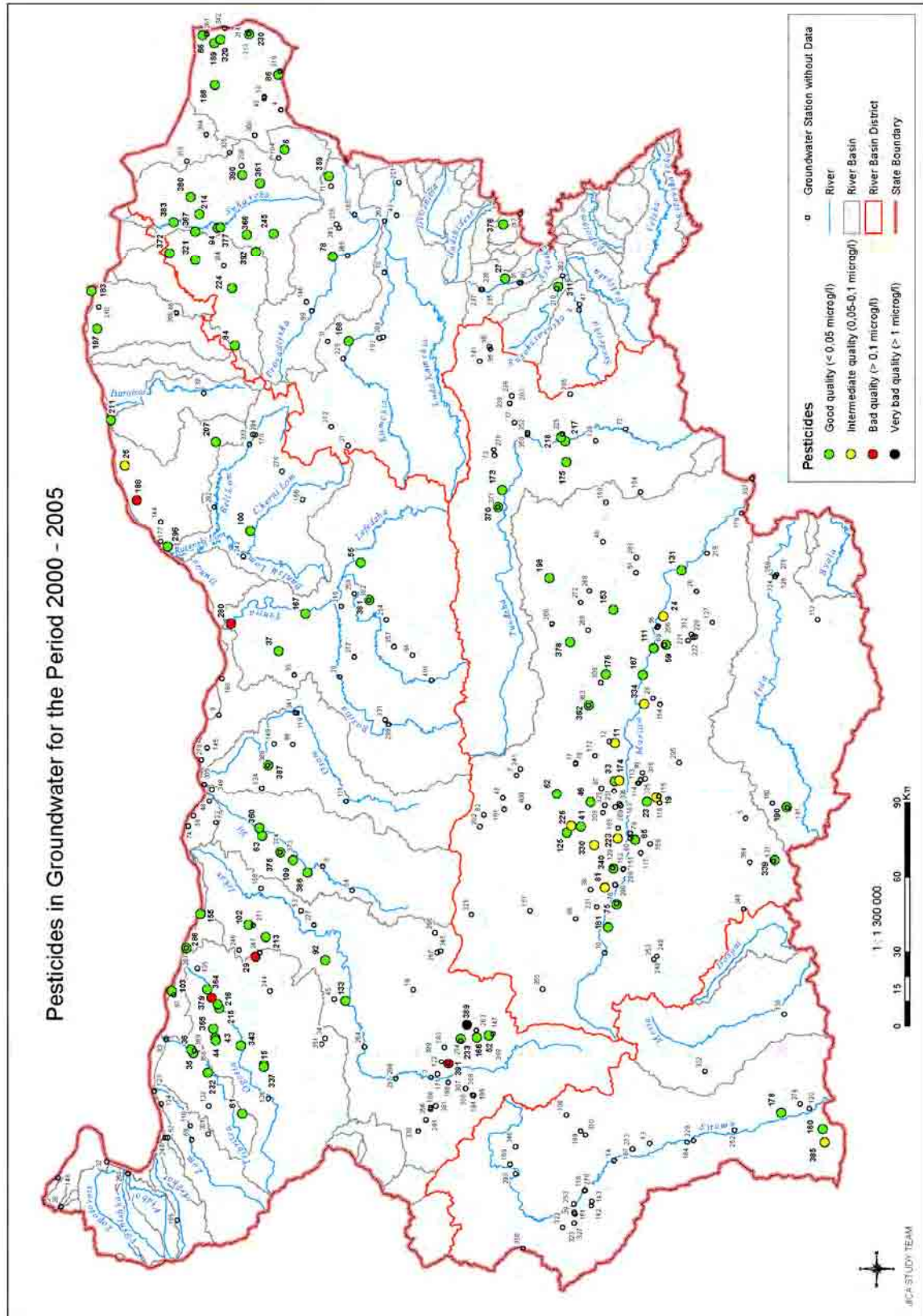


Figure 2.5.29 Pesticides in Groundwater for the Period 2000 - 2005

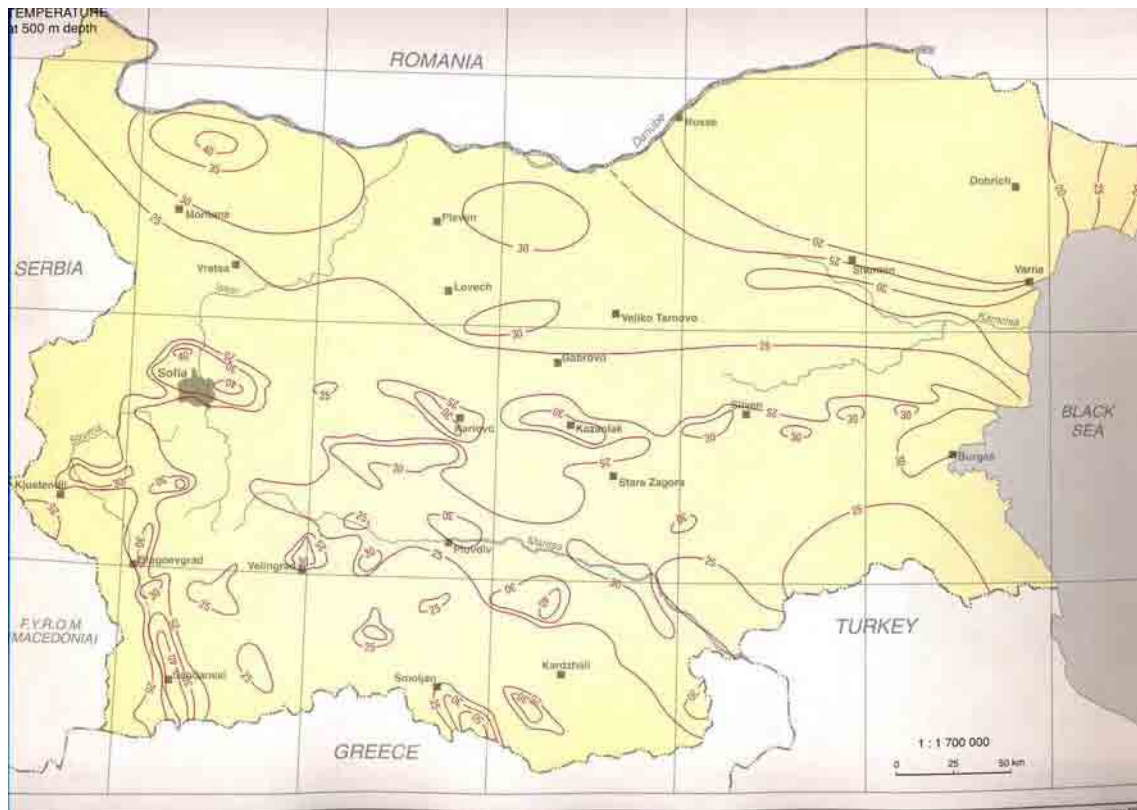


Figure 2.5.30 Temperature of Groundwater at 500 m Depth (Atlas, 2002)

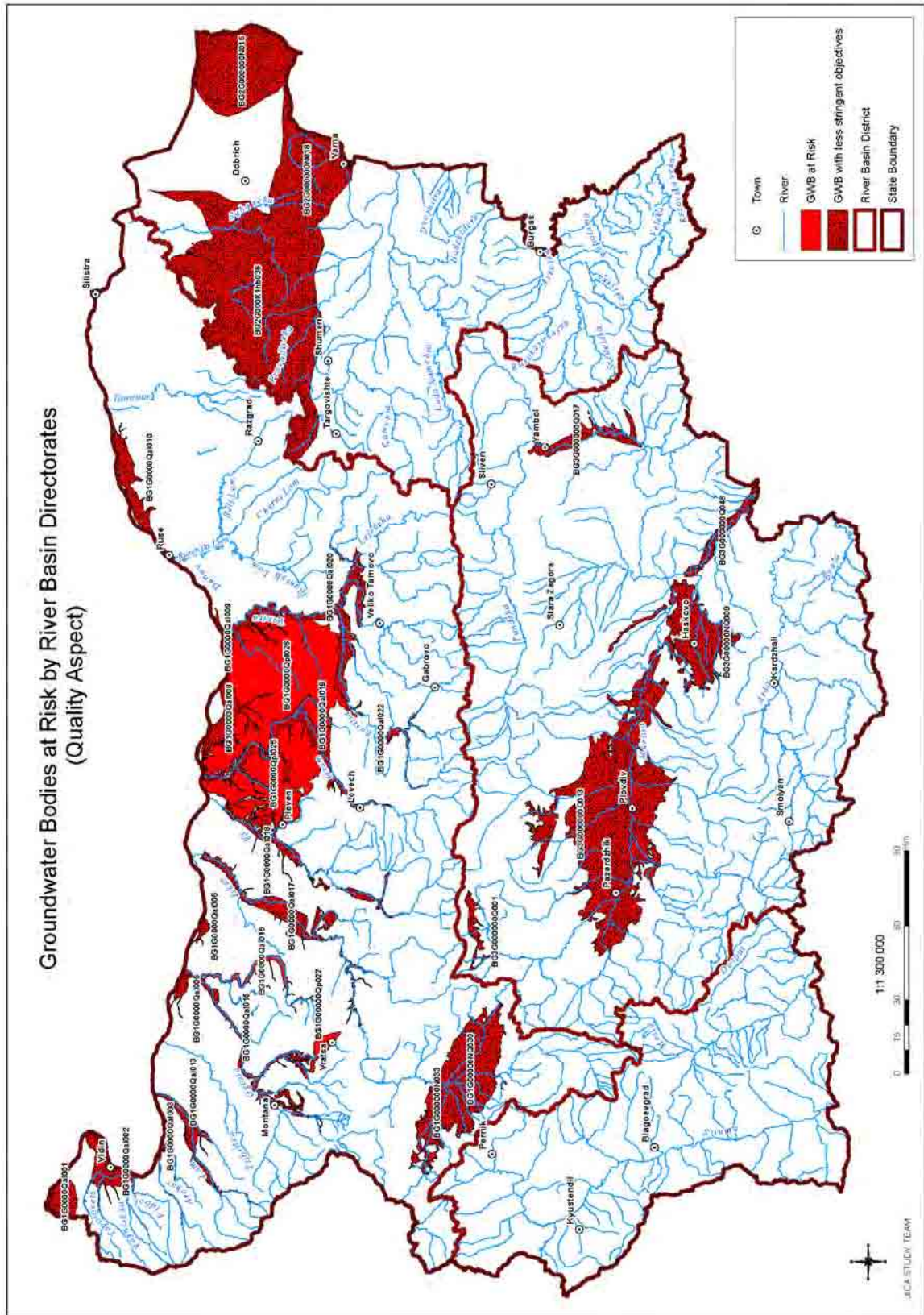


Figure 2.5.31 Groundwater Bodies at Risk by River Basin Directorates (Quantity Aspect)

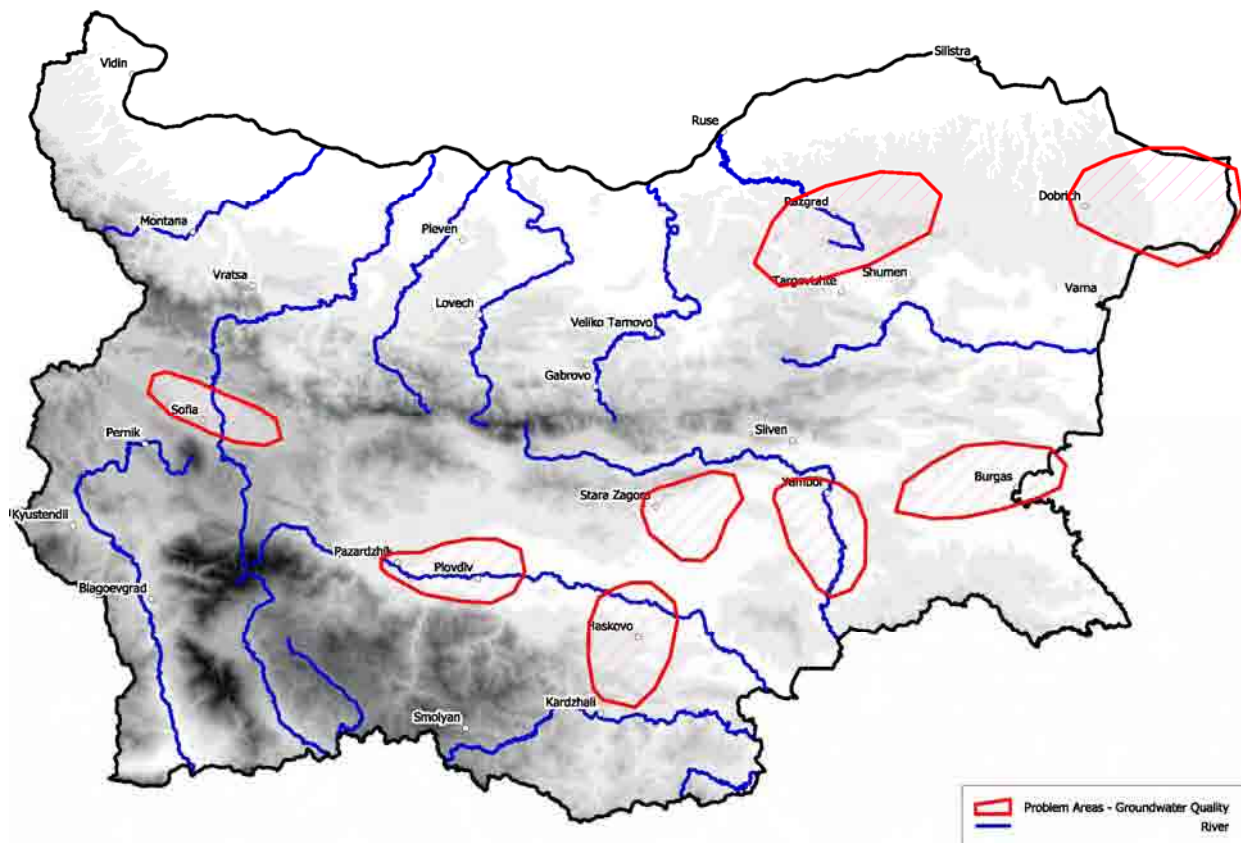


Figure 2.5.32 Problematic area in terms of groundwater quality