

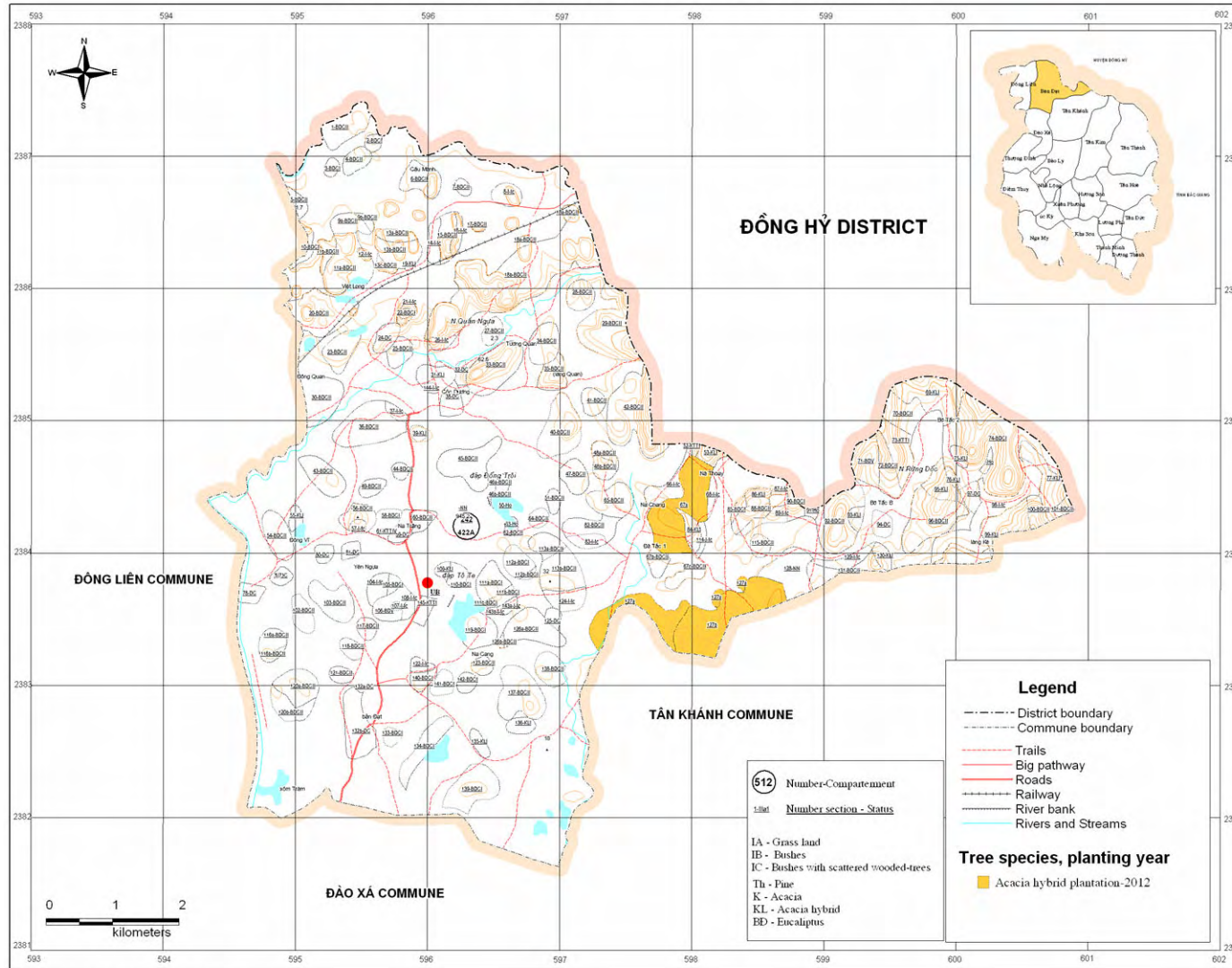
Commune: Bàn Đát

Year of plantation: Yr. 6<sup>th</sup>

Year of harvesting: Yr. 13<sup>th</sup>

Village	Block	Plot no.	Status of land use	Selected specie	Area (ha)	No. of Seedlings	Standing volume (m3)	Sale volume (m3)	Distance skidding (m)
Đà Tắc 1	242	127a	Euca. II	A.hybrid	12.6	23,008	1814	1270	150
Đà Tắc 1	242	127b	Euca. II	A.hybrid	22.2	40,537	3197	2238	300
Đà Tắc 1	242	67a	Euca. II	A.hybrid	19	34,694	2736	1915	200
Total					53.80	75,231	5,933	4,153	

# Plantation plan for 2012 in Ban Dat Commune



*This map is the result of field modification (November 2005) of forest resource and forest land change monitoring in year 2004. Topographical map: UTM, scale 1:25,000 based on a contour line map from the Government Office. Land parcel boundary is tentative drawing on the information collected in 2005 and based on results of ground truth with GPS check in February - 2006.*

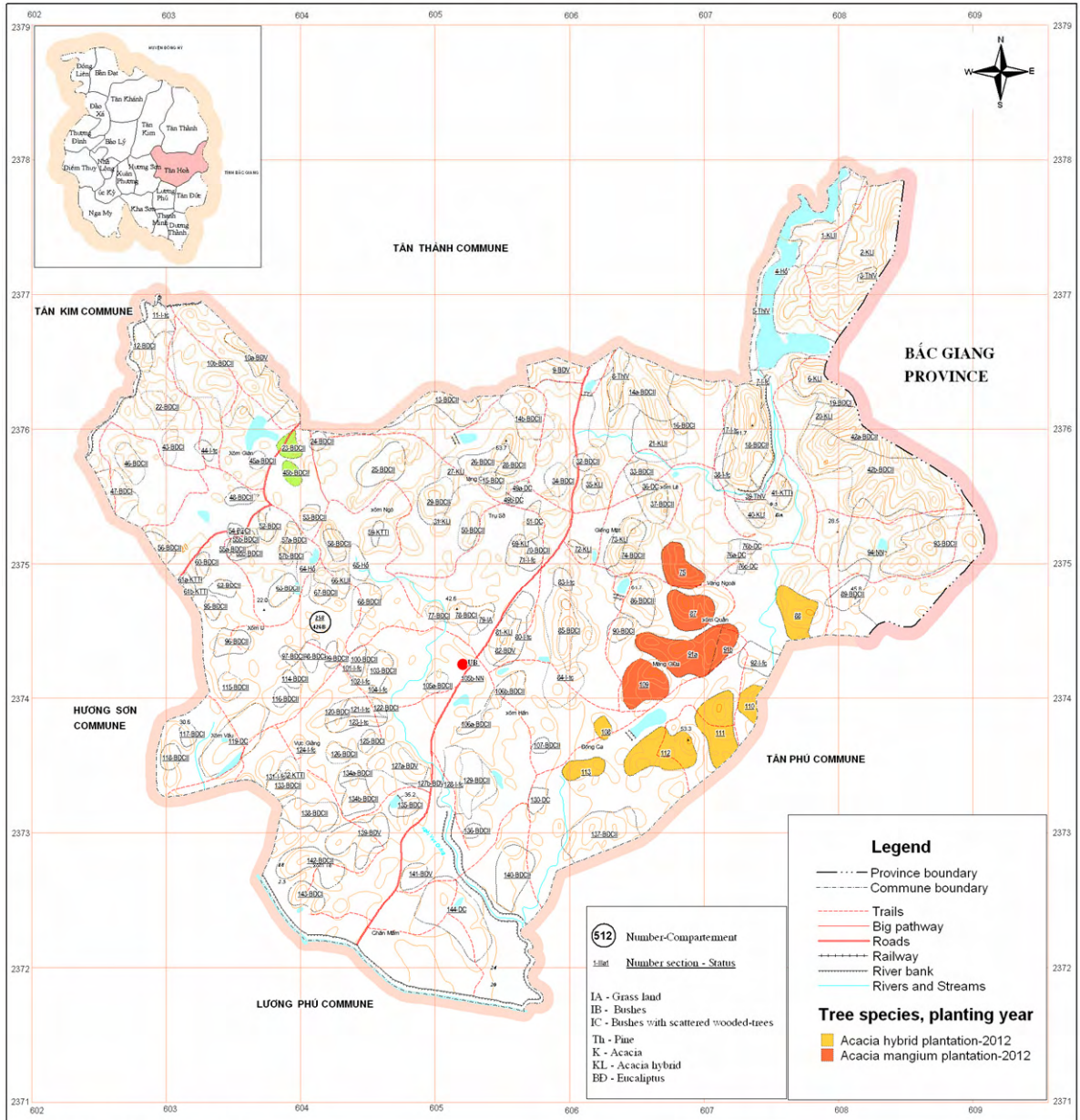
Commune: Tan Hoa

Year of plantation: Yr. 6<sup>th</sup>

Year of harvesting: Yr. 13<sup>th</sup>

Village	Block	Plot no.	Status of land use	Selected specie	Area (ha)		No. of Seedlings		Standing volume (m3)	Sale volume (m3)	Distance skidding (m)
					A. hybrid	A. mangium	A. hybrid	A. mangium			
Đồng cá	258	110	Euca. II	A.hybrid	3.2		5,843		525	367	100
Đồng cá	258	111	Euca. II	A.hybrid	11.56		21,109		1896	1327	200
Đồng cá	258	112	Euca. II	A.hybrid	12.83		23,428		2104	1473	200
Đồng cá	258	113	Euca. II	A.hybrid	3.84		7,012		553	387	150
Đồng Cá	258	108	Euca. II	A.hybrid	1.7		3,104		245	171	50
Xóm trại giữa	258	88	Euca. I	A.hybrid	8.14		14,864		1335	934	200
Xóm trại giữa	258	109	Euca. II	A.mangium		9.24		16,872	970	679	150
Xóm trại giữa	258	75	Euca. II	A.mangium		7.26		13,257	762	534	200
Xóm trại giữa	258	87	Euca. II	A.mangium		8.19		14,955	860	602	200
Xóm trại giữa	258	91a	Euca. II	A.mangium		14.24		26,002	1495	1047	200
Xóm trại giữa	258	91b	Euca. II	A.mangium		3.61		6,592	379	265	50
Sub-Total					41.27	42.54	75,359	77,678	11,124	7,786	
Total						83.81		153,037			

## Plantation plan for 2012 in Tan Hoa Commune



(This map is the result of field modification (November, 2005) of forest resource and forest land change monitoring in year 2004. Topographical map: UTM, scale 1:25 000. Based on a contour line map from the Government Office.) Village boundary is tentative drawing based on the information collected in 2005. Land parcel boundary is tentative drawing on the information collected in 2003 and based on results of ground truths with GPS check in February - 2006.)

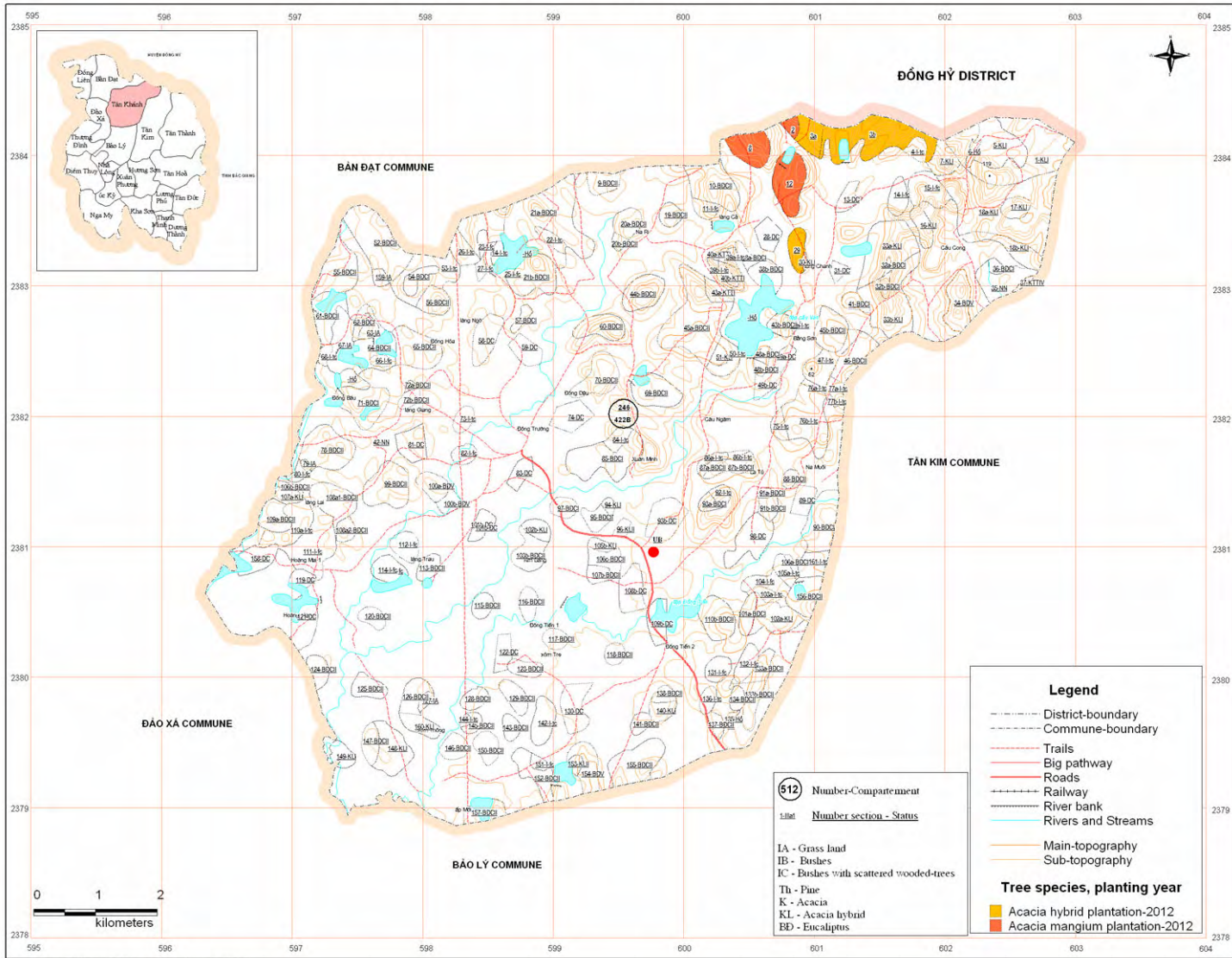
Commune: Tan Khanh

Year of plantation: Yr. 6<sup>th</sup>

Year of harvesting: Yr. 13<sup>th</sup>

Village	Block	Plot no.	Status of land use	Selected specie	Area (ha)		No. of Seedlings		Standing volume (m3)	Sale volume (m3)	Distance skidding (m)
					A. hybrid	A. mangium	A. hybrid	A. mangium			
Làng chanh	246	29	Euca. I	A.hybrid	3.6		6,574		590	413	100
Làng chanh	246	12	Euca. II	A.mangium		9.4		17,164	818	572	200
Làng chanh	246	3a	Euca. II	A.hybrid	4.7		8,582		771	540	150
Làng chanh	246	3b	Euca. II	A.hybrid	17.7		32,320		2903	2032	300
Làng chanh	246	8	Euca. II	A.mangium		6.7		12,234	583	408	150
Làng chanh	246	2	IA	A.mangium		1.5		2,739	131	91	100
Sub-Total					26	17.6	47476	32137.6	5,796	4,056	
Total						43.60		79,614			

# Plantation plan for 2012 in Tan Khanh Commune



This map is the result of field modification (in November 2005) of forest resource and forest land change monitoring in year 2004. Topographical map, UTM, scale 1:25,000 based on a contour line map from the Government Office. Land parcel boundary is tentative drawing on the information collected in 2005 and based on results of ground tracks with GPS check in February - 2006.

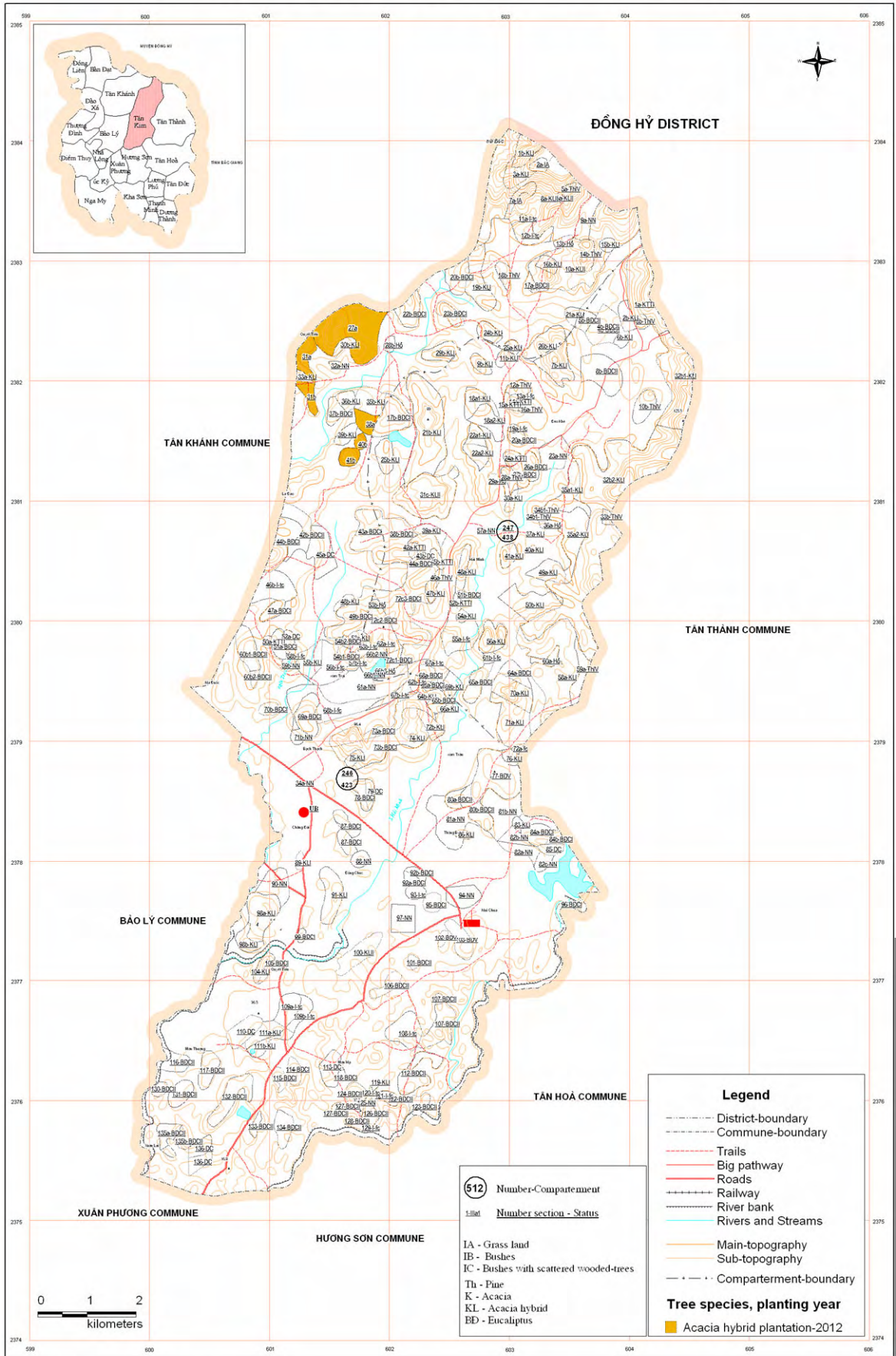
Commune: Tan Kim

Year of plantation: Yr. 6<sup>th</sup>

Year of harvesting: Yr. 13<sup>th</sup>

Village	Block	Plot no.	Status of land use	Selected specie	Area (ha)	No. of Seedlings	Standing volume (m3)	Sale volume (m3)	Distance skidding (m)
Quyết tiên	246	27a	Euca. I	A.hybrid	18.87	34,457	2717	1902	350
Quyết tiên	246	31a	Euca. I	A.hybrid	3.71	6,774	534	374	150
Quyết tiên	246	31b	Euca. I	A.hybrid	2.48	4,528	357	250	50
Quyết tiên	246	38a	Euca. I	A.hybrid	2.75	5,022	396	277	100
Quyết tiên	246	40b	Euca. I	A.hybrid	1.09	1,990	157	110	100
Quyết tiên	246	41b	Euca. I	A.hybrid	2.29	4,182	330	231	100
Total					31.19	56,953	4,491	3,144	

# Plantation plan for 2012 in Tan Kim Commune



(This map is the result by field modification (november 2003) of forest resource and forest land change monitoring in year 2004 Topographical map: UTM, scale 1:23,000 based on a contour line map from the Government's Office) Land parcel boundary is tentative drawing on the information collected in 2005 and based on results of ground truths with GPS check in February - 2006)



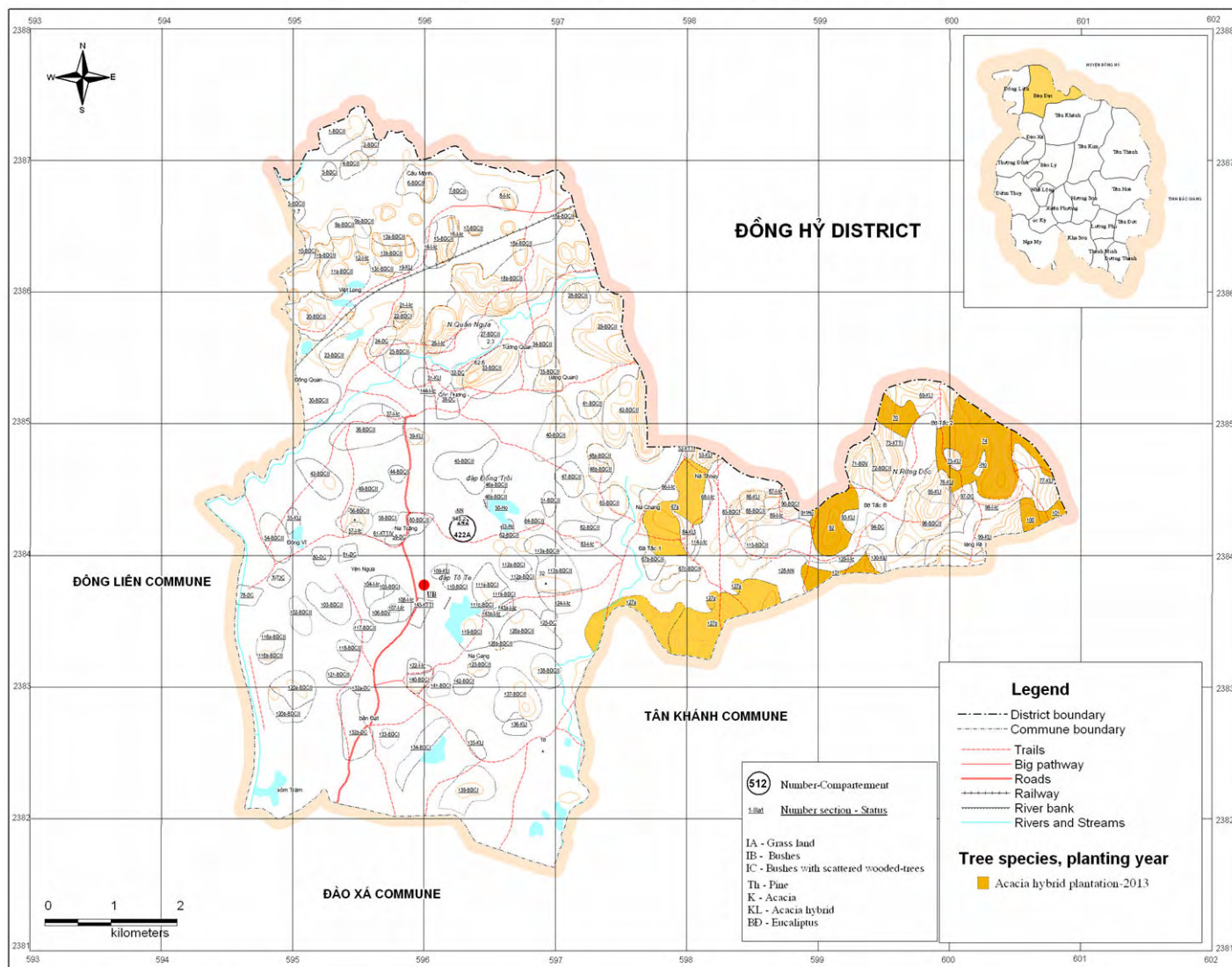
Commune: Bàn Đạt

Year of plantation: Yr. 7<sup>th</sup>

Year of harvesting: Yr. 14<sup>th</sup>

Village	Block	Plot no.	Status of land use	Selected specie	Area (ha)	No. of Seedlings	Standing volume (m3)	Sale volume (m3)	Distance skidding (m)
Bờ tấp B	242	131	Euca. II	A.hybrid	5.1	9,313	734	514	100
Bờ tấp B	242	92	Euca. II	A.hybrid	12.1	22,095	1742	1220	200
Làng Khê	242	74	Euca. I	A.hybrid	33.7	61,536	4853	3397	300
Làng Khê	242	100	Euca. II	A.hybrid	3	5,478	432	302	150
Làng Khê	242	101	Euca. II	A.hybrid	2	3,652	288	202	150
Làng Khê	242	70	Euca. II	A.hybrid	6.3	11,504	907	635	200
Total					62.20	113,577	8,956	6,270	

# Plantation plan for 2013 in Ban Dat Commune



*This map is the result of field modification (November 2005) of forest resource and forest land change monitoring in year 2004. Topographical map: UTM, scale 1:25,000 based on a contour line map from the Government Office. Land parcel boundary is tentative drawing on the information collected in 2005 and based on results of ground truth with GPS check in February - 2006.*

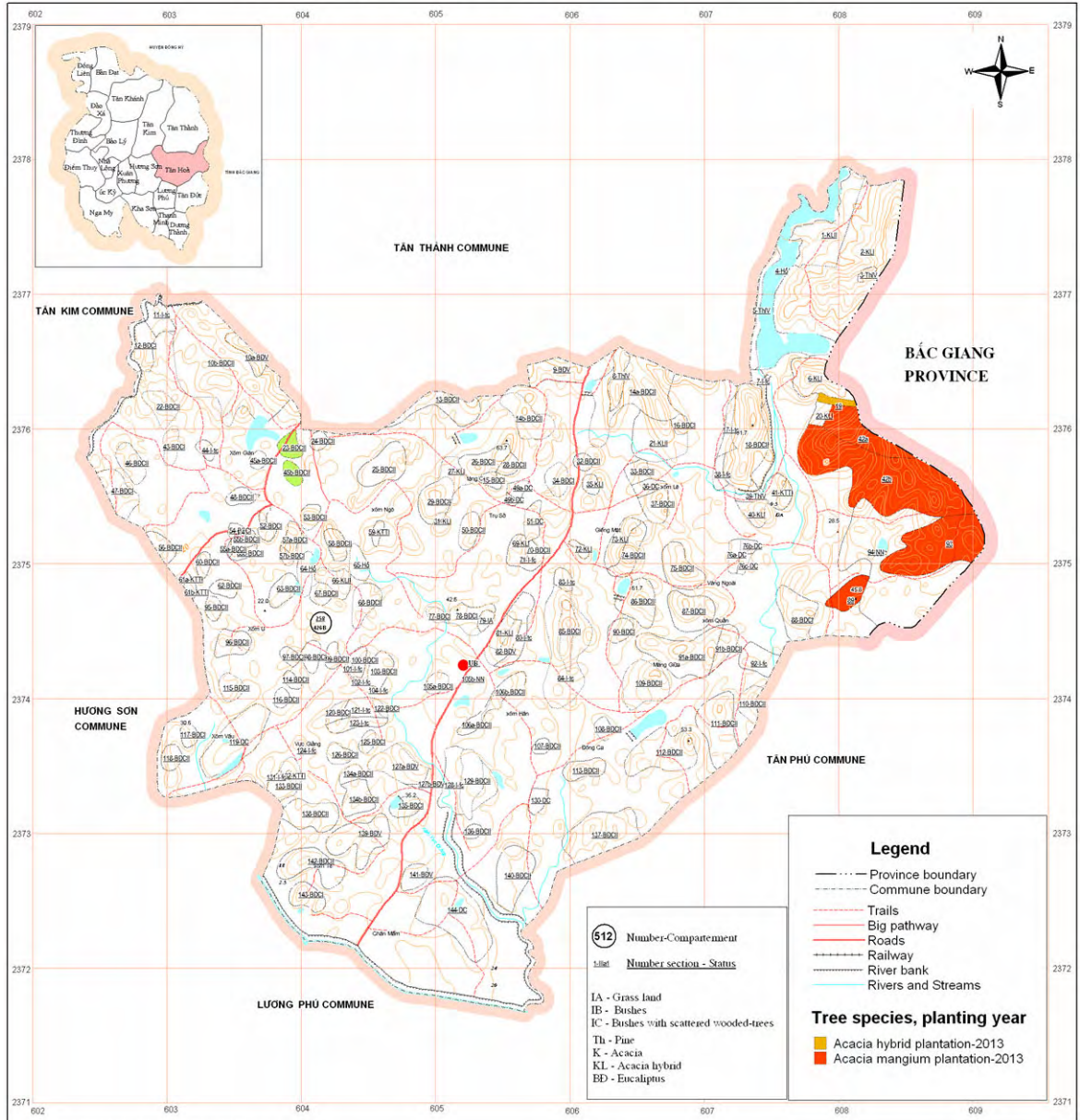
Commune: Tan Hoa

Year of plantation: Yr. 7<sup>th</sup>

Year of harvesting: Yr. 14<sup>th</sup>

Village	Block	Plot no.	Status of land use	Selected specie	Area (ha)		No. of Seedlings		Standing volume (m3)	Sale volume (m3)	Distance skidding (m)
					A. hybrid	A. mangium	A. hybrid	A. mangium			
Xóm vàng ngoài	258	42a	Euca. II	A.mangium		10.54	19,246		1107	775	350
Xóm vàng ngoài	258	42b	Euca. II	A.mangium		43.08	78,664		4523	3166	350
Xóm vàng ngoài	258	89	Euca. II	A.mangium		4.66	8,509		489	343	100
Xóm vàng ngoài	258	93	Euca. II	A.mangium		22.69	41,432		2382	1668	250
Xóm vàng ngoài	258	19	Euca. I	A.hybrid	1.56		2,849		225	157	250
Sub-Total					1.56	80.97	150699.78	0	8,726	6,109	
Total						82.53		150,700			

# Plantation plan for 2013 in Tan Hoa Commune



(This maps the result by field modification (November 2005) of forest resource and forest land change monitoring in year 2004. Topographical map: UTM, scale 1:25 000 based on a contour line map from the Government Office). Village boundary is tentative drawing based on the information collected in 2005. Land parcel boundary is tentative drawing on the information collected in 2005 and based on results of ground truths with GPS check in February - 2006).

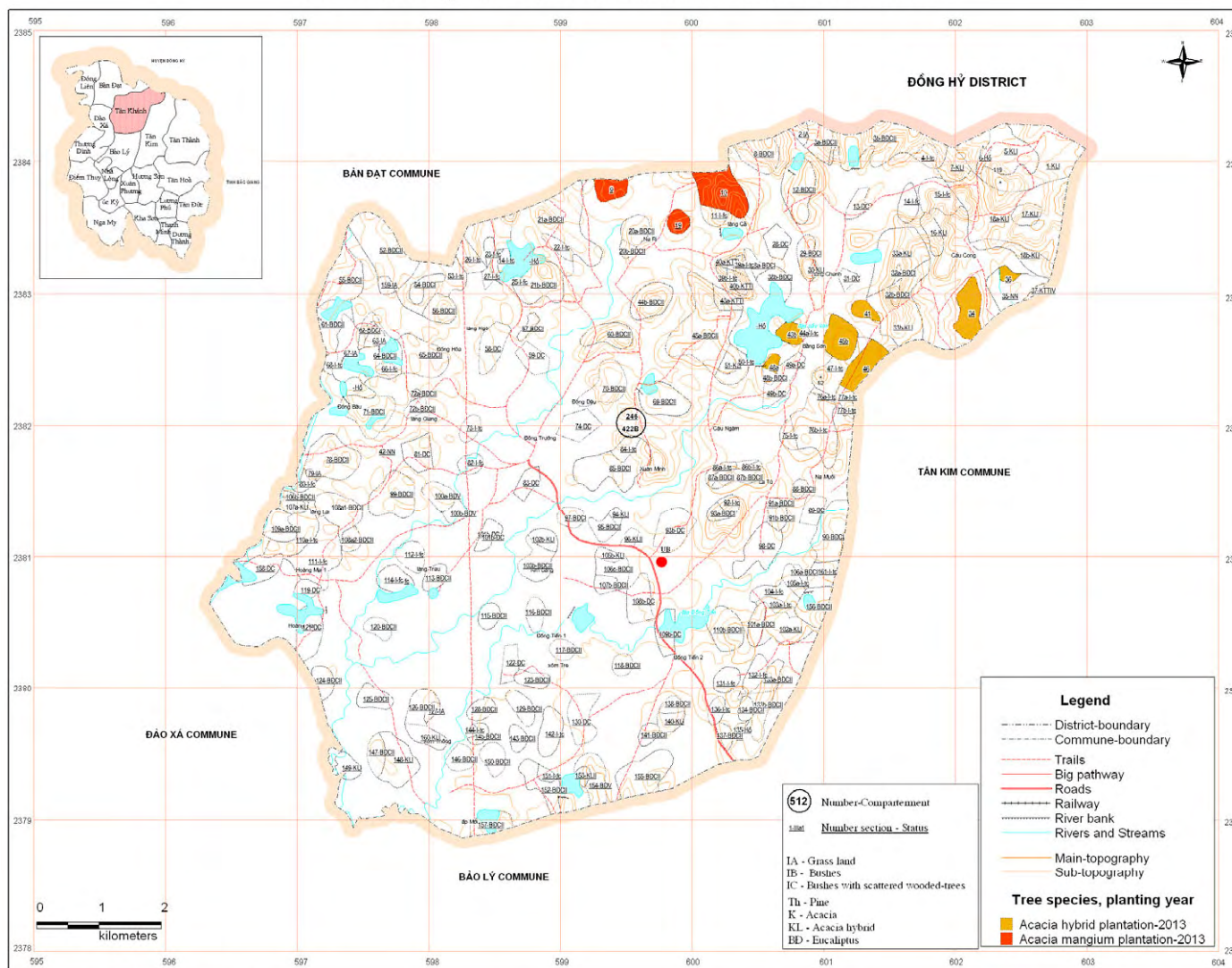
Commune: Tan Khanh

Year of plantation: Yr. 7<sup>th</sup>

Year of harvesting: Yr. 14<sup>th</sup>

Village	Block	Plot no.	Status of land use	Selected specie	Area (ha)		No. of Seedlings		Standing volume (m3)	Sale volume (m3)	Distance skidding (m)
					A. hybrid	A. mangium	A. hybrid	A. mangium			
Băng Sơn	246	41	Euca. I	A.hybrid	2.2		4,017		317	222	100
Băng Sơn	246	48a	Euca. I	A.hybrid	1.2		2,191		173	121	50
Băng Sơn	246	43b	Euca. II	A.hybrid	2.8		5,113		403	282	100
Băng Sơn	246	45b	Euca. II	A.hybrid	6.7		12,234		965	675	200
Băng Sơn	246	46	Euca. II	A.hybrid	6.2		11,321		893	625	150
Cầu công	246	36	Euca. I	A.hybrid	1.3		2,374		187	131	200
Cầu công	246	34	Euca. V	A.hybrid	7		12,782		1008	706	250
Làng cả	246	10	Euca. II	A.mangium		10.2		18,625	887	621	250
Làng cả	246	19	Euca. II	A.mangium		2.5		4,565	218	152	100
Làng cả	246	9	Euca. II	A.mangium		3.6		6,574	313	219	150
Sub-Total					27.4	16.3	50,032	29,764	2,613	1,829	
Total						43.70		79,796			

# Plantation plan for 2013 in Tan Khanh Commune



This map is the result by field modification (in November 2005) of forest resource and forest land change monitoring in year 2004. Topographical map: UTM, scale 1:25 000 based on a contour line map from the Government Office. Land parcel boundary is tentative drawing on the information collected in 2005 and based on results of ground truth with GPS check in February - 2006.