

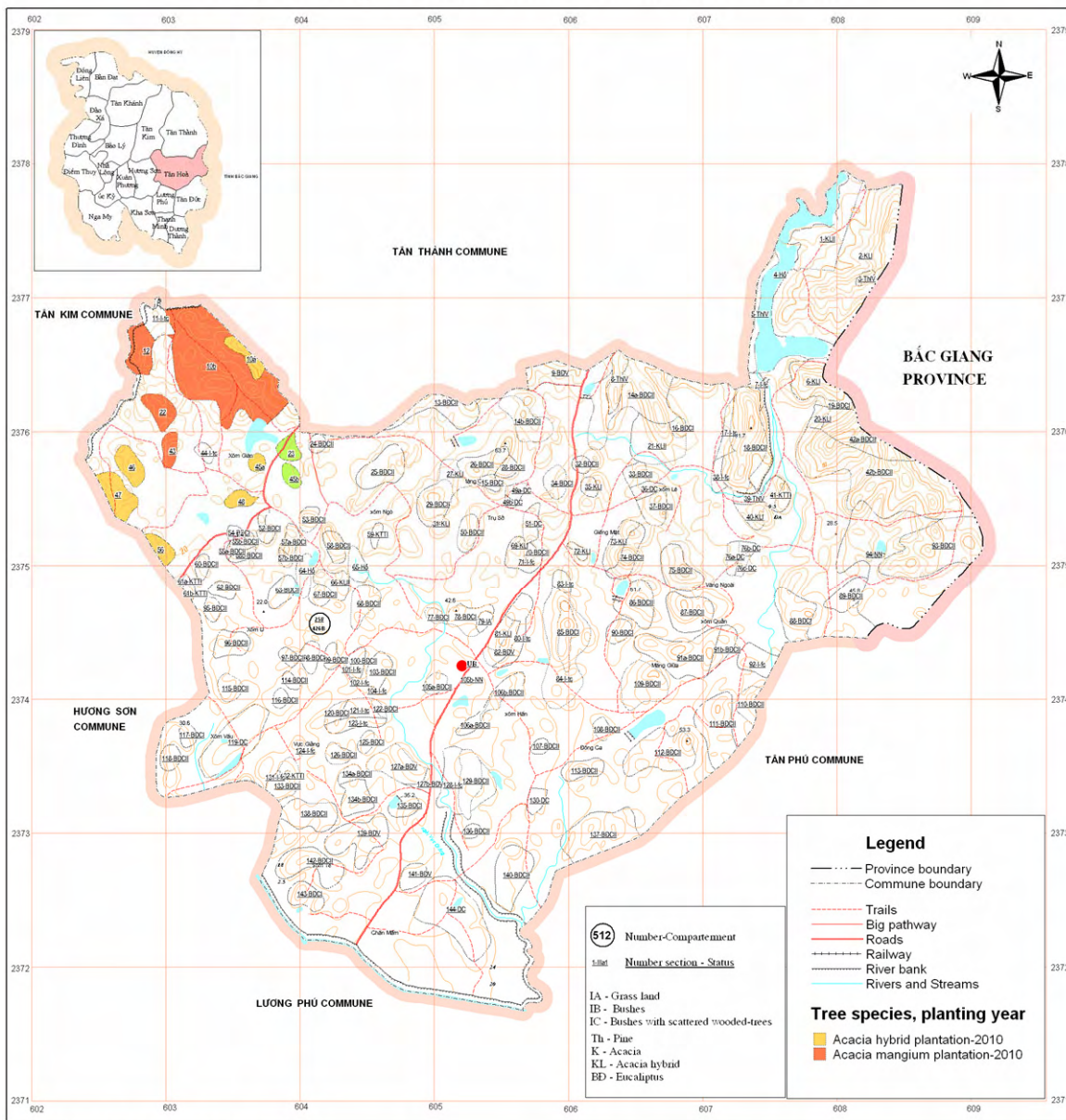
Commune: Tan Hoa

Year of plantation: Yr. 4<sup>th</sup>

Year of harvesting: Yr. 11<sup>th</sup>

| Village   | Block | Plot no. | Status of land use | Selected specie | Area (ha) |            | No. of Seedlings |            | Standing volume (m3) | Sale volume (m3) | Distance skidding (m) |
|-----------|-------|----------|--------------------|-----------------|-----------|------------|------------------|------------|----------------------|------------------|-----------------------|
|           |       |          |                    |                 | A. hybrid | A. mangium | A. hybrid        | A. mangium |                      |                  |                       |
| Xóm Giàn  | 258   | 12       | Euca. I            | A.mangium       |           | 6.17       |                  | 11,266     | 648                  | 453              | 250                   |
| Xóm Giàn  | 258   | 43       | Euca. I            | A.mangium       |           | 2.6        |                  | 4,748      | 273                  | 191              | 150                   |
| Xóm Giàn  | 258   | 47       | Euca. I            | A.hybrid        | 6.21      |            | 11,339           |            | 894                  | 626              | 100                   |
| Xóm Giàn  | 258   | 10b      | Euca. II           | A.mangium       |           | 43.48      |                  | 79,394     | 4565                 | 3196             | 300                   |
| Xóm Giàn  | 258   | 22       | Euca. II           | A.mangium       |           | 4.37       |                  | 7,980      | 459                  | 321              | 200                   |
| Xóm Giàn  | 258   | 45a      | Euca. II           | A.hybrid        | 1.36      |            | 2,483            |            | 223                  | 156              | 100                   |
| Xóm Giàn  | 258   | 46       | Euca. II           | A.hybrid        | 4.28      |            | 7,815            |            | 616                  | 431              | 200                   |
| Xóm Giàn  | 258   | 48       | Euca. II           | A.hybrid        | 2.24      |            | 4,090            |            | 367                  | 257              | 100                   |
| Xóm Giàn  | 258   | 56       | Euca. II           | A.hybrid        | 2.72      |            | 4,967            |            | 446                  | 312              | 150                   |
| Xóm Giàn  | 258   | 10a      | BDV                | A.mangium       |           | 3.19       |                  | 5,825      | 335                  | 234              | 300                   |
| Sub-total |       |          |                    |                 | 16.8      | 59.8       | 30,695.1         | 109,213.1  |                      |                  |                       |
| Total     |       |          |                    |                 |           | 76.62      |                  | 139,908    | 8,826.00             | 6,177.00         |                       |

# Plantation plan for 2010 in Tan Hoa Commune



*(This maps the results by final modification (November 2005) of forest resources and forest land change monitoring in year 2004. Topographical map: UTM, scale 1:25,000 based on a contour line map from the Government Office). Village boundary is tentative drawing based on the information collected in 2005. Land parcel boundary is tentative drawing on the information collected in 2005 and based on results of ground truths with GPS check in February - 2006.*

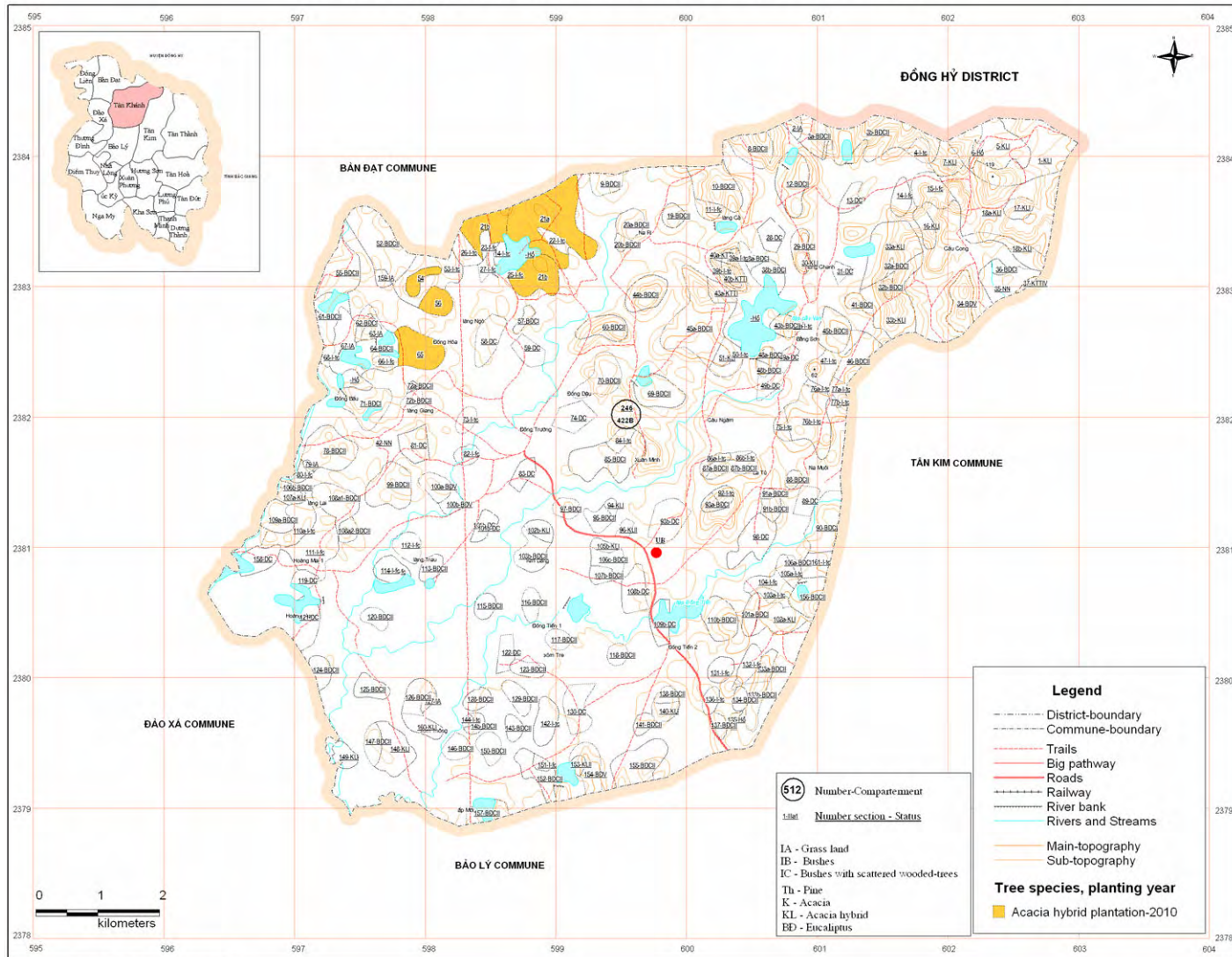
Commune: Tan Khanh

Year of plantation: Yr. 4<sup>th</sup>

Year of harvesting: Yr. 11<sup>th</sup>

| Village  | Block | Plot no. | Status of land use | Selected specie | Area (ha) | No. of Seedlings | Standing volume (m3) | Sale volume (m3) | Distance skidding (m) |
|----------|-------|----------|--------------------|-----------------|-----------|------------------|----------------------|------------------|-----------------------|
| Làng Ngò | 246   | 54       | Euca. I            | A.hybrid        | 2.7       | 4,930            | 389                  | 272              | 150                   |
| Làng Ngò | 246   | 21a      | Euca. II           | A.hybrid        | 24.9      | 45,467           | 4084                 | 2859             | 250                   |
| Làng Ngò | 246   | 21b      | Euca. II           | A.hybrid        | 16        | 29,216           | 2304                 | 1613             | 200                   |
| Làng Ngò | 246   | 56       | Euca. II           | A.hybrid        | 4.2       | 7,669            | 605                  | 423              | 150                   |
| Làng Ngò | 246   | 65       | Euca. II           | A.hybrid        | 9.1       | 16,617           | 1310                 | 917              | 150                   |
| Total    |       |          |                    |                 | 56.9      | 103,899          | 8,692                | 6,084            |                       |

# Plantation plan for 2010 in Tan Khanh Commune



This map is the result of field modification (November 2005) of forest resource and forest land change monitoring in year 2004. Topographical map: UTM scale 1:25,000 based on a contour line map from the Government Office. Land parcel boundaries: tentative drawing on the information collected in 2005 and based on results of ground truths with GPS check in February - 2006.

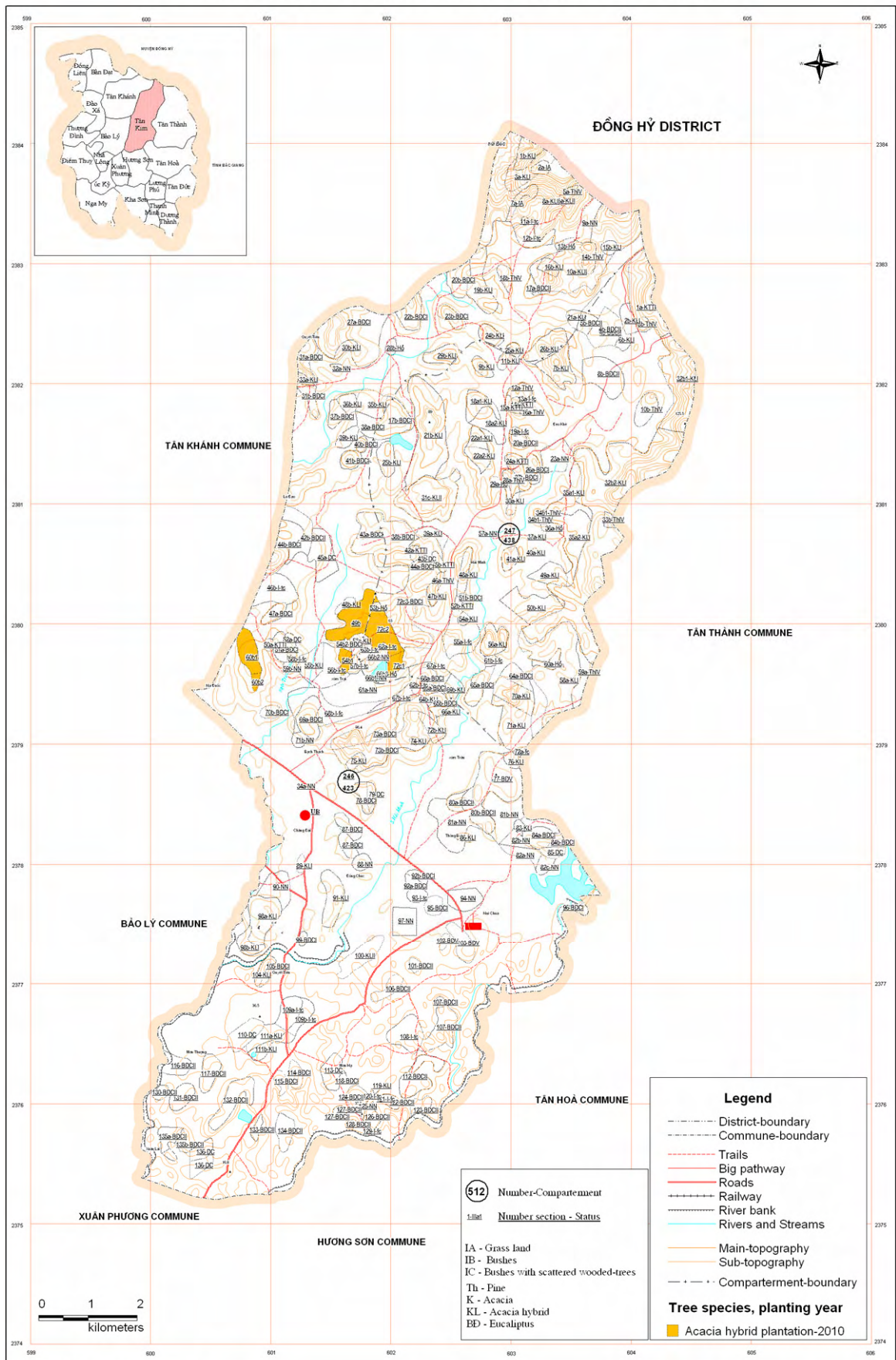
Commune: Tan Kim

Year of plantation: Yr. 4<sup>th</sup>

Year of harvesting: Yr. 11<sup>th</sup>

| Village  | Block | Plot no. | Status of land use | Selected specie | Area (ha) | No. of Seedlings | Standing volume (m3) | Sale volume (m3) | Distance skidding (m) |
|----------|-------|----------|--------------------|-----------------|-----------|------------------|----------------------|------------------|-----------------------|
| Xóm Trại | 246   | 49b      | Euca. I            | A.hybrid        | 8.3       | 15,156           | 1195                 | 837              | 250                   |
| Xóm Trại | 246   | 54b1     | Euca. I            | A.hybrid        | 1.89      | 3,451            | 310                  | 217              | 100                   |
| Xóm Trại | 247   | 72c1     | Euca. I            | A.hybrid        | 1.88      | 3,433            | 308                  | 216              | 200                   |
| Xóm Trại | 247   | 72c2     | Euca. I            | A.hybrid        | 7.05      | 12,873           | 1015                 | 711              | 250                   |
| Xóm Trại | 246   | 60b1     | Euca. II           | A.hybrid        | 5.03      | 9,185            | 825                  | 577              | 200                   |
| Xóm Trại | 246   | 60b2     | Euca. II           | A.hybrid        | 0.81      | 1,479            | 133                  | 93               | 200                   |
| Total    |       |          |                    |                 | 24.96     | 45,577           | 3,786                | 2,651            |                       |

# Plantation plan for 2010 in Tan Kim Commune



(This map is the result of field modification (november 2005) of forest resources and forest land change monitoring in year 2004. Topographical map: UTM, scale 1:25.000 based on a contour line map from the Government Office) Land parcel boundary is sensitive drawing on the information collected in 2005 and based on results of ground truth with GPS check in february - 2006)

Commune: Bàn Đát

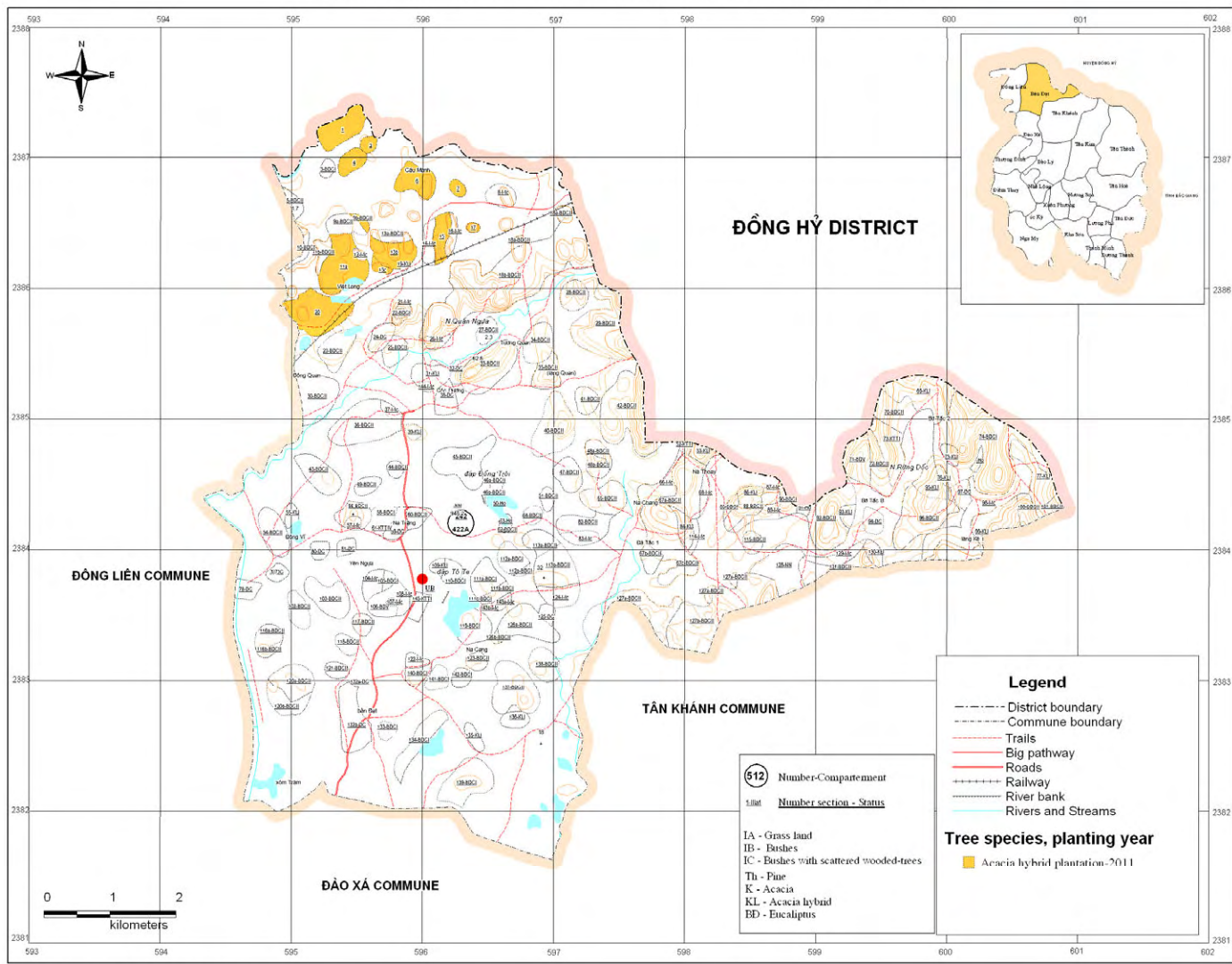
Year of plantation: Yr. 5<sup>h</sup>

Year of harvesting: Yr. 12<sup>th</sup>

06

| Village  | Block | Plot no. | Status of land use | Selected specie | Area (ha) | No. of Seedlings | Standing volume (m3) | Sale volume (m3) | Distance skidding |
|----------|-------|----------|--------------------|-----------------|-----------|------------------|----------------------|------------------|-------------------|
| Cầu mành | 242   | 2        | Euca. I            | A.hybrid        | 1.4       | 2,556            | 230                  | 161              | 50                |
| Cầu mành | 242   | 1        | Euca. II           | A.hybrid        | 7.2       | 13,147           | 1181                 | 827              | 200               |
| Cầu mành | 242   | 11a      | Euca. II           | A.hybrid        | 11.8      | 21,547           | 1699                 | 1189             | 300               |
| Cầu mành | 242   | 13b      | Euca. II           | A.hybrid        | 5.9       | 10,773           | 850                  | 595              | 250               |
| Cầu mành | 242   | 13c      | Euca. II           | A.hybrid        | 1.1       | 2,009            | 158                  | 111              | 250               |
| Cầu mành | 242   | 15       | Euca. II           | A.hybrid        | 4         | 7,304            | 576                  | 403              | 150               |
| Cầu mành | 242   | 17       | Euca. II           | A.hybrid        | 0.6       | 1,096            | 98                   | 69               | 50                |
| Cầu mành | 242   | 20       | Euca. II           | A.hybrid        | 12.2      | 22,277           | 1757                 | 1230             | 250               |
| Cầu mành | 242   | 4        | Euca. II           | A.hybrid        | 3.2       | 5,843            | 525                  | 367              | 150               |
| Cầu mành | 242   | 6        | Euca. II           | A.hybrid        | 5.9       | 10,773           | 968                  | 677              | 200               |
| Cầu mành | 242   | 7        | Euca. II           | A.hybrid        | 1.3       | 2,374            | 213                  | 149              | 100               |
| Cầu mành | 242   | 9b       | Euca. II           | A.hybrid        | 0.8       | 1,461            | 115                  | 81               | 50                |
|          |       |          |                    |                 | 55.4      | 101,160          | 8,370                | 5,859            |                   |

# Plantation plan for 2011 in Ban Dat Commune



*This map is the result of field modification (November 2005) of forest resource and forest land change monitoring in year 2004. Topographical map: UTM, scale 1:25,000 based on a contour line map from the Government Office. Land parcel boundary is tentative drawing on the information stated in 2005 and based on results of ground truths with GPS check in February - 2006.*



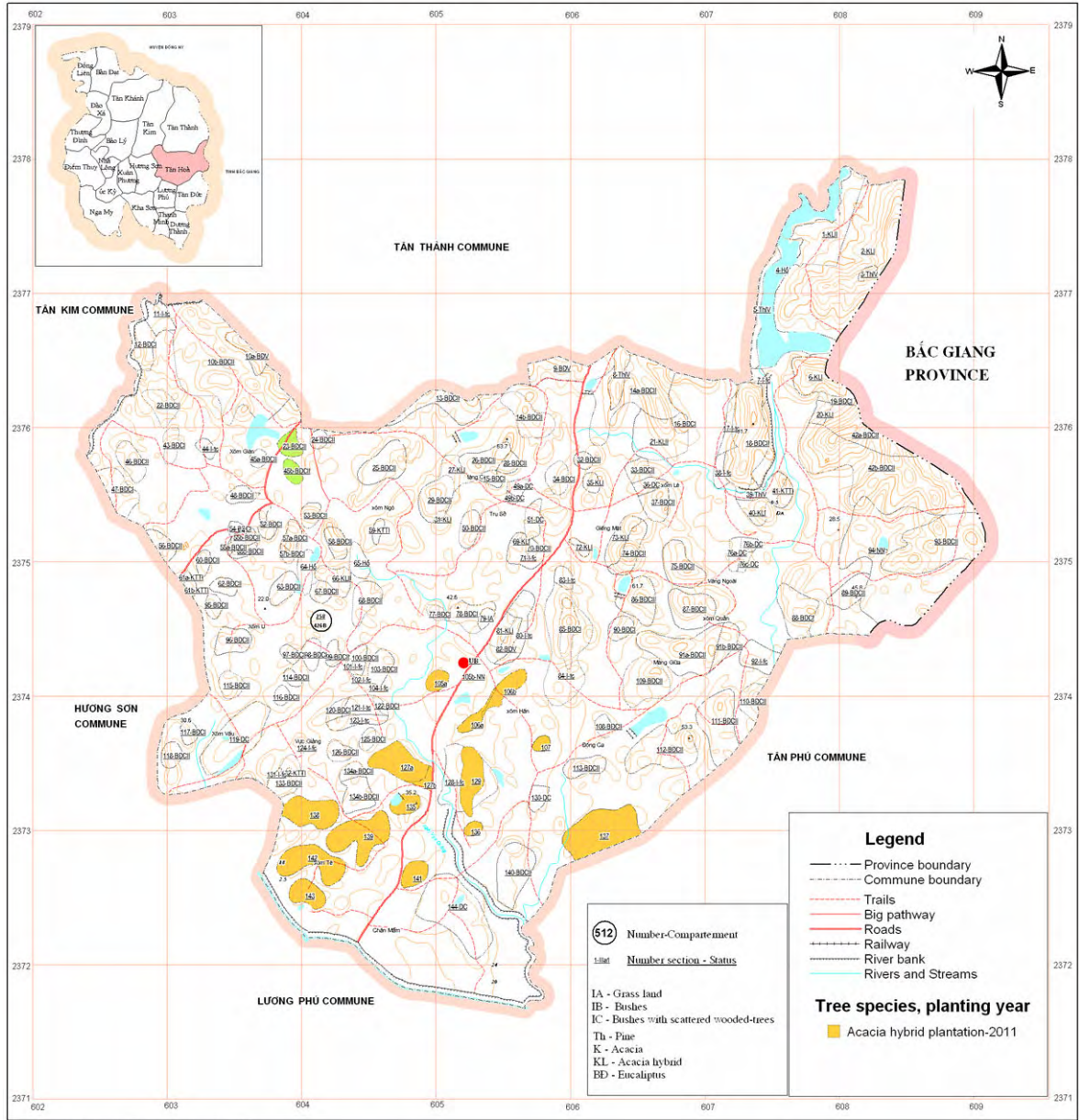
Commune: Tan Hoa

Year of plantation: Yr. 5<sup>h</sup>

Year of harvesting: Yr. 12<sup>th</sup>

| Village         | Block | Plot no. | Status of land use | Selected specie | Area (ha) | No. of Seedlings | Standing volume (m3) | Sale volume (m3) | Distance skidding (m) |
|-----------------|-------|----------|--------------------|-----------------|-----------|------------------|----------------------|------------------|-----------------------|
| Xóm Hân         | 258   | 105a     | Euca. II           | A.hybrid        | 2.1       | 3,835            | 344                  | 241              | 100                   |
| Xóm Hân         | 258   | 106a     | Euca. II           | A.hybrid        | 1.99      | 3,634            | 287                  | 201              | 150                   |
| Xóm Hân         | 258   | 106b     | Euca. II           | A.hybrid        | 3.69      | 6,738            | 531                  | 372              | 150                   |
| Xóm Hân         | 258   | 107      | Euca. II           | A.hybrid        | 1.25      | 2,283            | 180                  | 126              | 50                    |
| Xóm Hân         | 258   | 129      | Euca. II           | A.hybrid        | 6.5       | 11,869           | 936                  | 655              | 200                   |
| Xóm Hân         | 258   | 136      | Euca. II           | A.hybrid        | 1.18      | 2,155            | 170                  | 119              | 50                    |
| Xóm Hân         | 258   | 137      | Euca. II           | A.hybrid        | 14.67     | 26,787           | 2406                 | 1684             | 250                   |
| Xóm hân         | 258   | 127a     | Euca. V            | A.hybrid        | 7.73      | 14,115           | 1113                 | 779              | 200                   |
| Xóm hân         | 258   | 127b     | Euca. V            | A.hybrid        | 1.2       | 2,191            | 173                  | 121              | 50                    |
| Xóm thanh lương | 258   | 141      | Euca. V            | A.hybrid        | 3.04      | 5,551            | 499                  | 349              | 100                   |
| Xóm tè          | 258   | 135      | Euca. I            | A.hybrid        | 2.91      | 5,314            | 477                  | 334              | 100                   |
| Xóm tè          | 258   | 143      | Euca. I            | A.hybrid        | 4.11      | 7,505            | 592                  | 414              | 100                   |
| Xóm tè          | 258   | 138      | Euca. II           | A.hybrid        | 7.63      | 13,932           | 1099                 | 769              | 200                   |
| Xóm tè          | 258   | 142      | Euca. II           | A.hybrid        | 8.89      | 16,233           | 1280                 | 896              | 200                   |
| Xóm tè          | 258   | 139      | Euca. V            | A.hybrid        | 10.22     | 18,662           | 1472                 | 1030             | 150                   |
| Total           |       |          |                    |                 | 77.11     | 140,803          | 11,559               | 8,090            |                       |

# Plantation plan for 2011 in Tan Hoa Commune



*(This map is the result of field modification (November 2005) of forest resources and forest land change monitoring in year 2004. Topographical map: UTM, scale 1:25,000 based on a contour line map from the Government Office.)*  
*Village boundary is tentative drawing based on the information collected in 2005.*  
*Land parcel boundary is tentative drawing on the information collected in 2005 and based on results of ground truth with GPS check in February - 2006.*

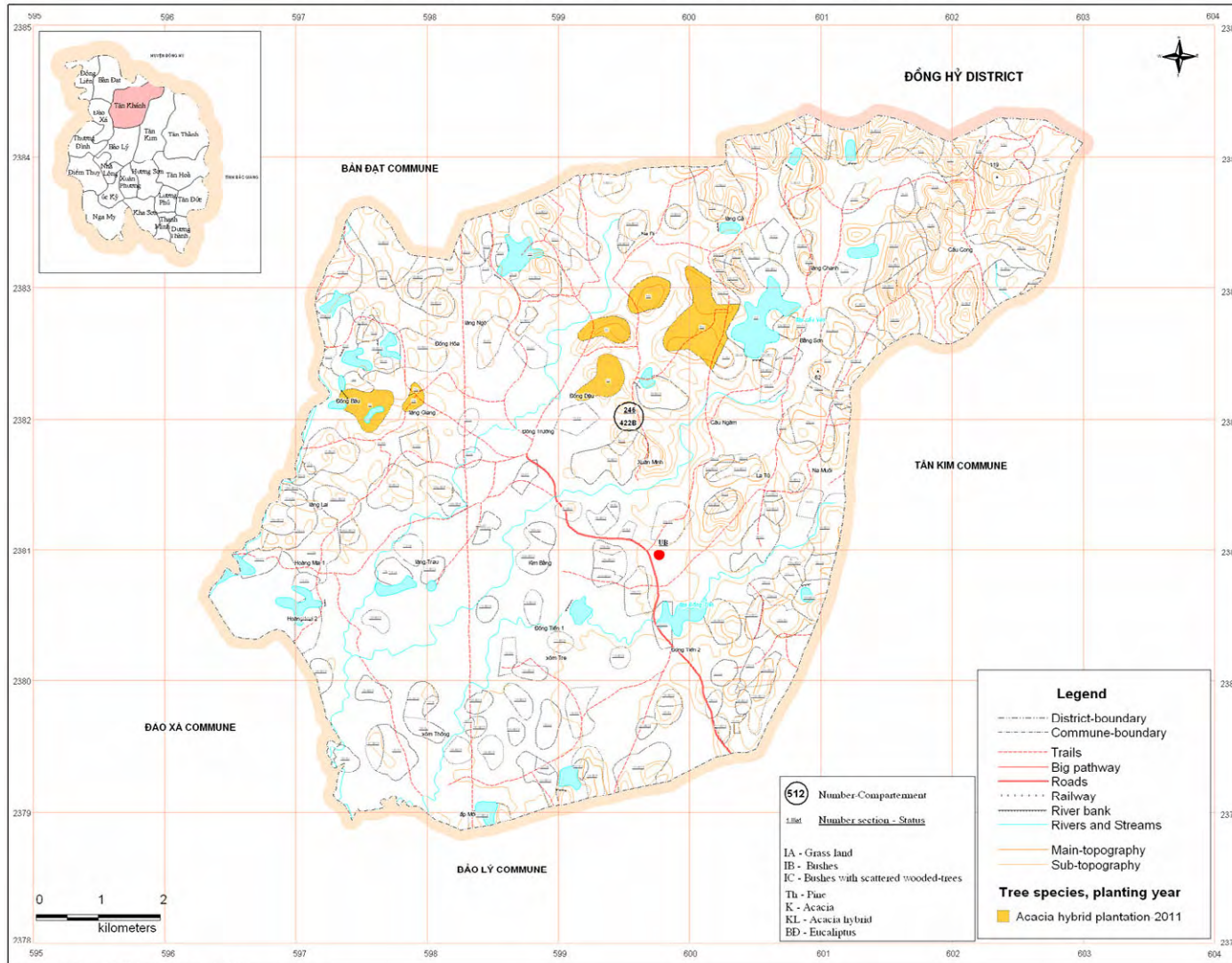
Commune: Tan Khanh

Year of plantation: Yr. 5<sup>h</sup>

Year of harvesting: Yr. 12<sup>th</sup>

| Village    | Block | Plot no. | Status of land use | Selected specie | Area (ha) | No. of Seedlings | Standing volume (m3) | Sale volume (m3) | Distance skidding (m) |
|------------|-------|----------|--------------------|-----------------|-----------|------------------|----------------------|------------------|-----------------------|
| Đông Dậu   | 246   | 44b      | Euca. II           | A.hybrid        | 6.7       | 12,234           | 1099                 | 769              | 150                   |
| Đông Dậu   | 246   | 45a      | Euca. II           | A.hybrid        | 21.4      | 39,076           | 3510                 | 2457             | 200                   |
| Đông Dậu   | 246   | 60       | Euca. II           | A.hybrid        | 5.8       | 10,591           | 951                  | 666              | 150                   |
| Đông Dậu   | 246   | 70       | Euca. II           | A.hybrid        | 7.6       | 13,878           | 1246                 | 872              | 200                   |
| Làng Giang | 246   | 71       | Euca. I            | A.hybrid        | 9.2       | 16,799           | 1325                 | 927              | 250                   |
| Làng Giang | 246   | 72a      | Euca. II           | A.hybrid        | 0.5       | 913              | 72                   | 50               | 50                    |
| Làng Giang | 246   | 72b      | Euca. II           | A.hybrid        | 1.8       | 3,287            | 295                  | 207              | 50                    |
| Total      |       |          |                    |                 | 53        | 96,778           | 8,498                | 5,948            |                       |

# Plantation plan for 2011 in Tan Khanh Commune



This map is the result of field modification (November 2005) of forest resource and forest land change monitoring in year 2004. Topographical map: UTM scale: 1:25,000 based on a contour line map from the Government Office. Land parcel boundary is tentative drawing on the information collected in 2005 and based on results of ground truths with GPS check in February - 2006.

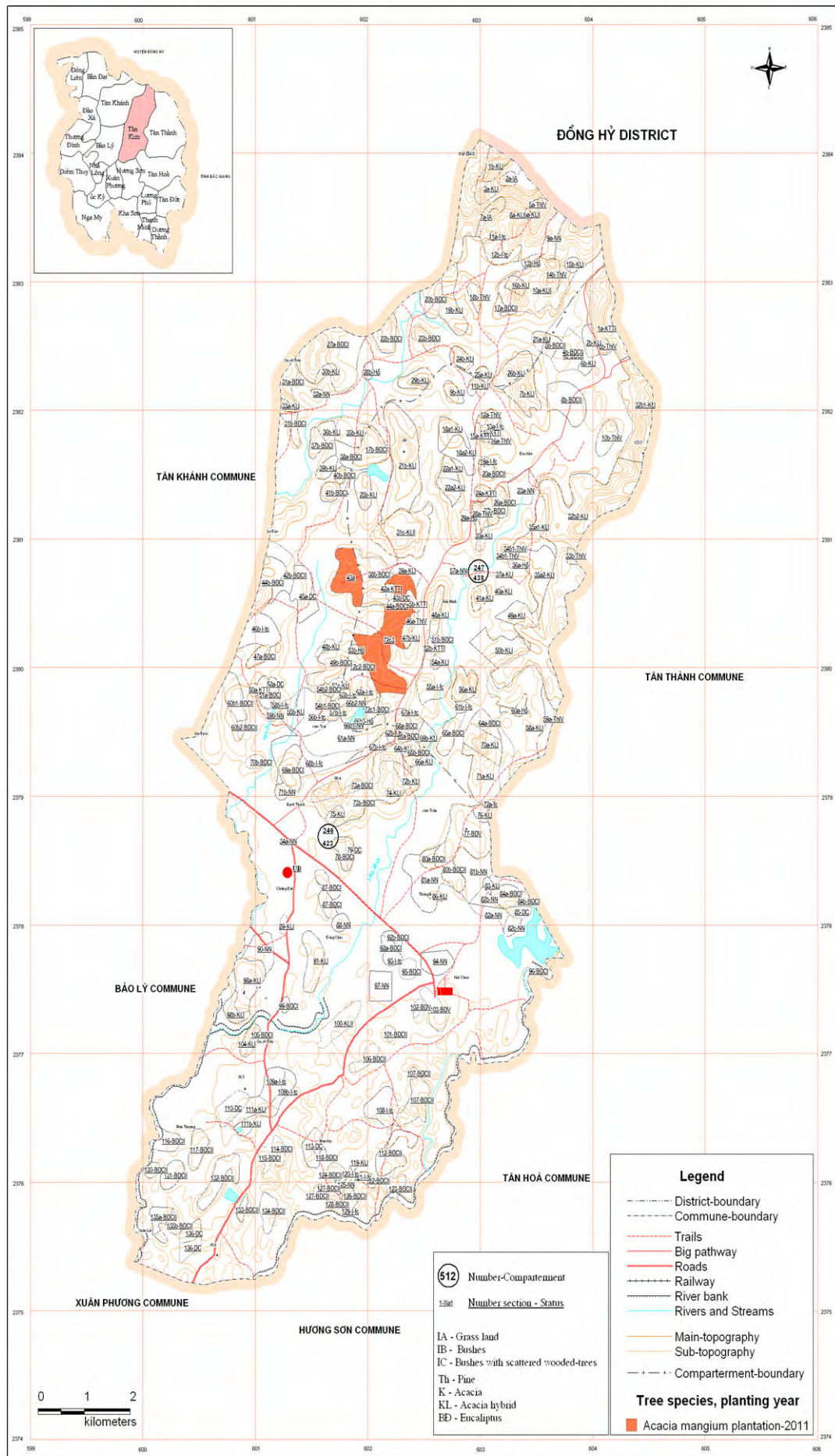
Commune: Tan Kim

Year of plantation: Yr. 5<sup>h</sup>

Year of harvesting: Yr. 12<sup>th</sup>

| Village  | Block | Plot no. | Status of land use | Selected specie | Area (ha) | No. of Seedlings | Standing volume (m3) | Sale volume (m3) | Distance skidding (m) |
|----------|-------|----------|--------------------|-----------------|-----------|------------------|----------------------|------------------|-----------------------|
| Hải Minh | 246   | 43a      | Euca. I            | A.mangium       | 8.3       | 15,156           | 722                  | 505              | 200                   |
| Hải Minh | 247   | 72c3     | Euca. I            | A.mangium       | 21.61     | 39,460           | 1880                 | 1316             | 250                   |
| Total    |       |          |                    |                 | 29.91     | 54,616           | 2,602                | 1,821            |                       |

# Plantation plan for 2011 in Tan Kim Commune



(This map is the result by field modification (November 2005) of forest resource and forest land change monitoring in year 2004. Topographical map: UTM, scale 1:25,000 based on a contour line map from the Government Office). Land parcel boundary is tentative drawing on the information collected in 2005 and based on results of ground checks with GPS check in February - 2006)