

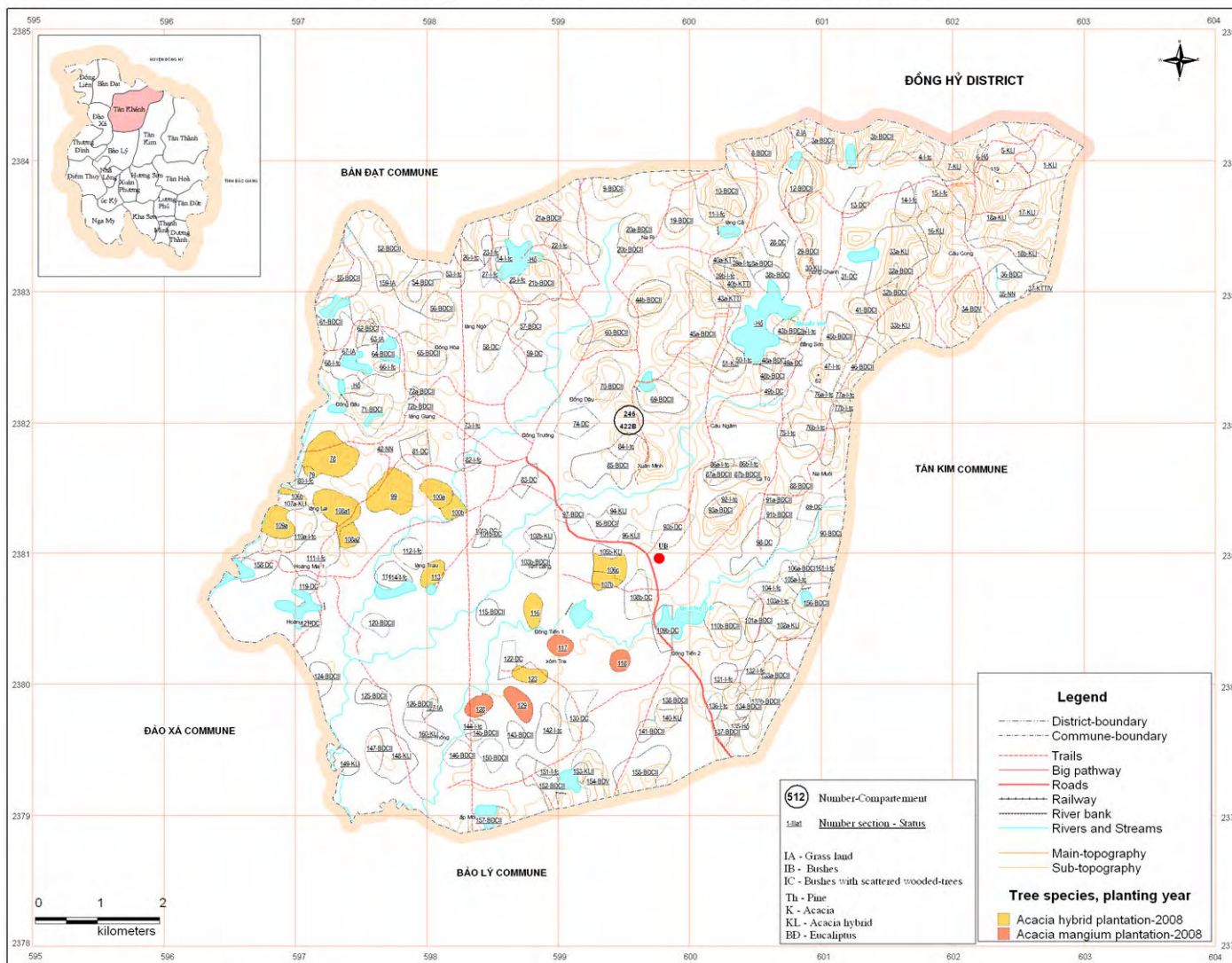
Commune: Tan Khanh

Year of plantation: Yr. 2nd

Year of harvesting: Yr. 9th

Village	Block	Plot no.	Status of land use	Selected specie	Area (ha)		No. of Seedlings		Standing volume (m3)	Sale volume (m3)	Distance skidding
					A. hybrid	A. mangium	A. hybrid	A. mangium			
Kim băng	246	106c	Euca. II	A.hybrid	3.6		6,574		590	413	150
Kim băng	246	107b	Euca. II	A.hybrid	2.3		4,200		377	264	50
Kim băng	246	116	Euca. II	A.hybrid	2.9		5,295		476	333	100
Làng Lát	246	106b	Euca. II	A.hybrid	0.9		1,643		130	91	150
Làng Lát	246	108a1	Euca. II	A.hybrid	7.6		13,878		1094	766	200
Làng Lát	246	108a2	Euca. II	A.hybrid	2.3		4,200		377	264	100
Làng Lát	246	109a	Euca. II	A.hybrid	4.7		8,582		677	474	200
Làng Lát	246	78	Euca. II	A.hybrid	10.3		18,808		1483	1038	150
Làng Lát	246	99	Euca. II	A.hybrid	9.5		17,347		1368	958	150
Làng Lát	246	79	IA	A.hybrid	0.5		913		72	50	100
Làng Trâu	246	113	Euca. II	A.hybrid	2.8		5,113		459	321	50
Làng Trâu	246	100a	Euca. V	A.hybrid	3.9		7,121		562	393	200
Làng Trâu	246	100b	Euca. V	A.hybrid	2.3		4,200		377	264	50
Xóm tre	246	117	Euca. II	A.mangium		2.5		4,565	218	152	100
Xóm tre	246	118	Euca. II	A.mangium		2.2		4,017	191	134	100
Xóm tre	246	123	Euca. II	A.hybrid	2.9		5,295		476	333	100
Xóm tre	246	128	Euca. II	A.mangium		2.7		4,930	235	164	100
Xóm tre	246	129	Euca. II	A.mangium		3.6		6,574	313	219	100
Sub-total					56.5	11.0	103,169	20,086	9,475.00	6,631.00	
Total						67.50		123,255			

Plantation plan for 2008 in Tan Khanh Commune



This map is the result of field modification (in november 2005) of forest resource and forest land change monitoring in year 2004. Topographical map: 1:75,000, scale 1:25,000 based on a contour line map from the Government Office. Land parcel boundary is tentative drawing on the information collected in 2005 and based on results of ground truth with GPS check in february - 2006.

Commune: Tan Kim

Year of plantation: Yr. 2nd

Year of harvesting: Yr. 9th

Village	Block	Plot no.	Status of land use	Selected specie	Area (ha)	No. of Seedlings	Standing volume (m3)	Sale volume (m3)	Distance skidding (m)
Đông Chúc	246	87b	Euca. I	A.hybrid	2.35	4,291	385	270	100
Đông Chúc	246	99	Euca. I	A.hybrid	0.7	1,278	115	80	50
Mon thượng	246	130	Euca. II	A.hybrid	1.38	2,520	226	158	100
Mon thượng	246	131	Euca. II	A.hybrid	3.38	6,172	554	388	150
Mon thượng	246	132	Euca. II	A.hybrid	6.52	11,906	1069	748	150
Núi chùa	246	101	Euca. II	A.hybrid	0.89	1,625	146	102	50
Núi chùa	246	106	Euca. II	A.hybrid	2.65	4,839	435	304	100
Núi chùa	246	102	Euca. V	A.hybrid	0.82	1,497	134	94	100
Núi chùa	246	103	Euca. V	A.hybrid	4.35	7,943	713	499	150
Thôn Bông	246	84a	Euca. I	A.hybrid	3.56	6,501	513	359	100
Thôn Bông	246	84b	Euca. I	A.hybrid	1.2	2,191	173	121	100
Thôn Bông	246	80b	Euca. II	A.hybrid	4.5	8,217	648	454	100
Total					32.3	58,980	5,111	3,577	

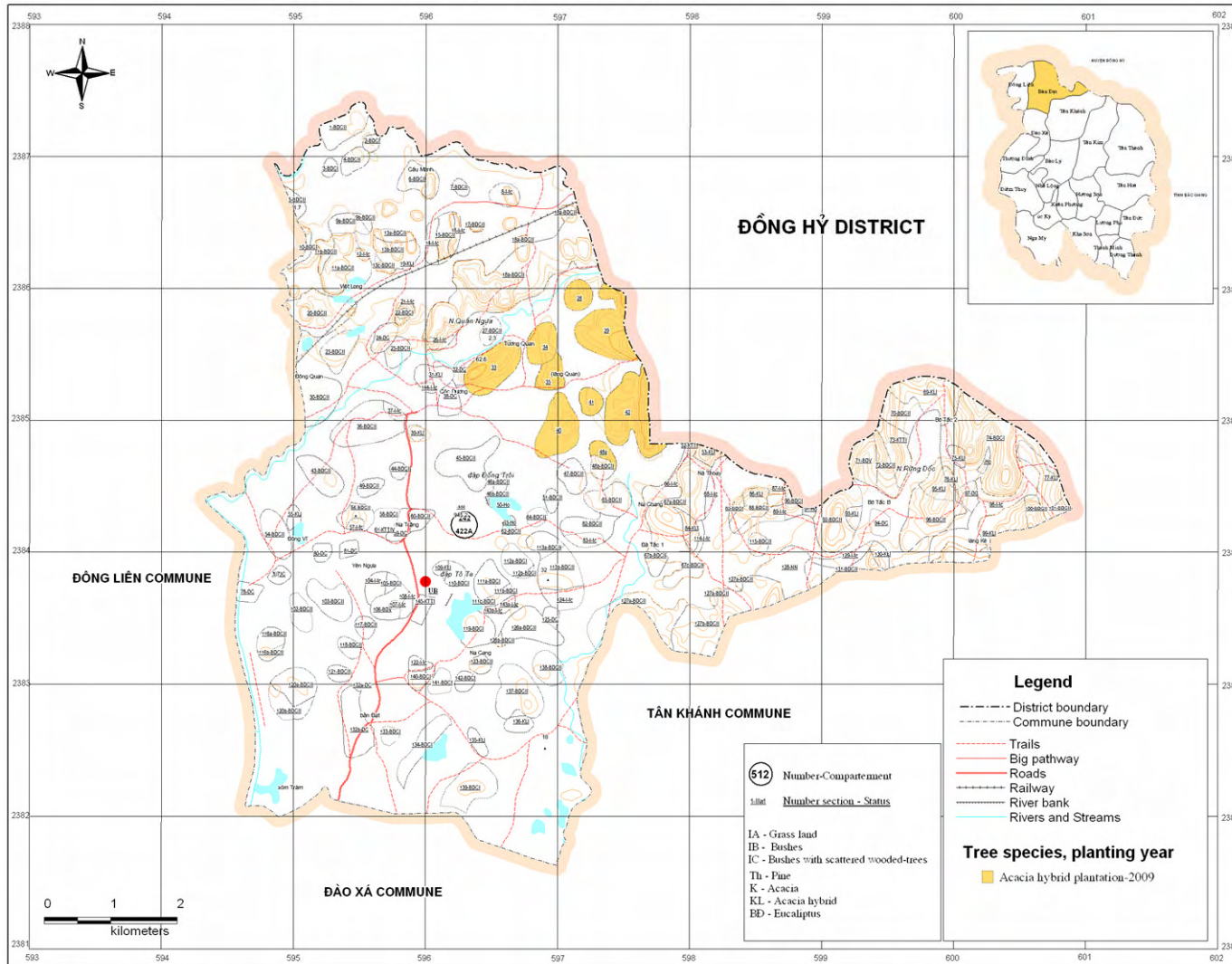
Commune: Bàn Đạt

Year of plantation: Yr. 3rd

Year of harvesting: Yr. 10th

Village	Block	Plot no.	Status of land use	Selected specie	Area (ha)	No. of Seedlings	Standing volume (m3)	Sale volume (m3)	Distance skidding (m)
Làng quan	242	28	Euca. II	A.hybrid	4.1	7,487	590	413	150
Làng quan	242	29	Euca. II	A.hybrid	15.1	27,573	2174	1522	350
Làng quan	242	33	Euca. II	A.hybrid	11.3	20,634	1627	1139	200
Làng quan	242	34	Euca. II	A.hybrid	6	10,956	864	605	200
Làng quan	242	35	Euca. II	A.hybrid	4.3	7,852	705	494	200
Làng quan	242	40	Euca. II	A.hybrid	11.1	20,269	1598	1119	300
Làng quan	242	41	Euca. II	A.hybrid	3	5,478	432	302	150
Làng quan	242	42	Euca. II	A.hybrid	17.3	31,590	2491	1744	350
Làng quan	242	48a	Euca. II	A.hybrid	2.2	4,017	317	222	100
Total					74.4	135,854	10,798	7,560	

Plantation plan for 2009 in Ban Dat Commune



This maps the results by filed modification (november 2005) of forest resource and forest land change monitoring in year 2004. Topographical map: UTM, scale 1:25 000 based on a contour line map from the Government Office. Land parcel boundary is tentative drawing on the information colated in 2003 and based on results of ground truths with GPS check in february - 2006.

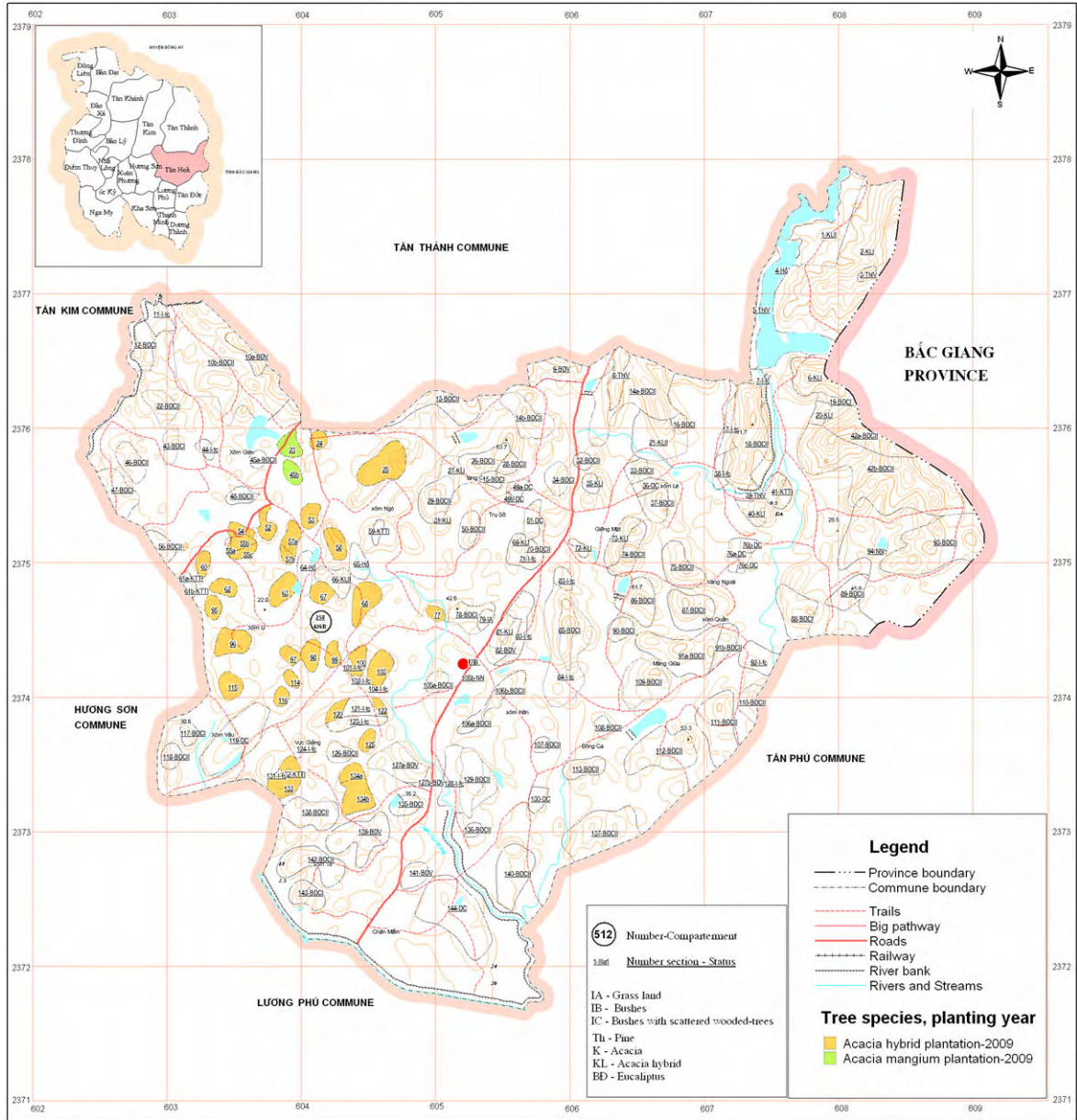
Commune: Tan Hoa

Year of plantation: Yr. 3rd

Year of harvesting: Yr. 10th

Village	Block	Plot no.	Status of land use	Selected specie	Area (ha)		No. of Seedlings		Standing volume (m3)	Sale volume (m3)	Distance skidding (m)
					A. hybrid	A. mangium	A. hybrid	A. mangium			
Xóm ngò	258	122	Euca. I	A.hybrid	0.86		1,570		124	87	50
Xóm Ngò	258	77	Euca. I	A.hybrid	1.23		2,246		177	124	50
Xóm ngò	258	100	Euca. II	A.hybrid	2.31		4,218		333	233	100
Xóm ngò	258	103	Euca. II	A.hybrid	3.72		6,793		536	375	150
Xóm Ngò	258	23	Euca. II	A.mangium		2.57		4,693	270	189	50
Xóm Ngò	258	24	Euca. II	A.hybrid	1.43		2,611		235	164	50
Xóm Ngò	258	25	Euca. II	A.hybrid	7.6		13,878		1246	872	200
Xóm Ngò	258	45b	Euca. II	A.mangium		1.95		3,561	205	143	50
Xóm Ngò	258	53	Euca. II	A.hybrid	2.16		3,944		311	218	100
Xóm Ngò	258	58	Euca. II	A.hybrid	2.97		5,423		428	299	100
Xóm U	258	52	Euca. I	A.hybrid	2.14		3,908		308	216	100
Xóm U	258	54	Euca. I	A.hybrid	1.41		2,575		203	142	50
Xóm U	258	57a	Euca. I	A.hybrid	2.4		4,382		346	242	100
Xóm U	258	57b	Euca. I	A.hybrid	0.96		1,753		138	97	100
Xóm U	258	98	Euca. I	A.hybrid	2.69		4,912		387	271	50
Xóm U	258	114	Euca. II	A.hybrid	1.2		2,191		173	121	50
Xóm U	258	115	Euca. II	A.hybrid	2.89		5,277		474	332	100
Xóm U	258	116	Euca. II	A.hybrid	1.34		2,447		193	135	50
Xóm U	258	55a	Euca. II	A.hybrid	0.29		530		48	33	50
Xóm U	258	55b	Euca. II	A.hybrid	1.73		3,159		284	199	50
Xóm U	258	55c	Euca. II	A.hybrid	1.3		2,374		213	149	50
Xóm U	258	60	Euca. II	A.hybrid	1.7		3,104		279	195	50
Xóm U	258	62	Euca. II	A.hybrid	2.1		3,835		344	241	50
Xóm U	258	63	Euca. II	A.hybrid	3.54		6,464		581	406	100
Xóm U	258	67	Euca. II	A.hybrid	2.25		4,109		324	227	100
Xóm U	258	68	Euca. II	A.hybrid	4.83		8,820		696	487	50
Xóm U	258	95	Euca. II	A.hybrid	1.82		3,323		298	209	50
Xóm U	258	96	Euca. II	A.hybrid	4.4		8,034		722	505	100
Xóm U	258	97	Euca. II	A.hybrid	1.52		2,776		219	153	50
Xóm U	258	99	Euca. II	A.hybrid	1.82		3,323		262	183	50
Xóm Vầu	258	125	Euca. I	A.hybrid	1.55		2,830		223	156	50
Xóm vầu	258	133	Euca. II	A.hybrid	4.85		8,856		795	557	150
Xóm vầu	258	134a	Euca. II	A.hybrid	1.87		3,415		269	188	150
Xóm vầu	258	134b	Euca. II	A.hybrid	5.01		9,148		721	505	150
Xóm vầu	258	120	Euca. I	A.hybrid	1.57		2,867		226	158	100
Sub-total					79.5	4.5	145,094	8,254	6,697.00	4,686.00	
Total						83.98		153,347			

Plantation plan for 2009 in Tan Hoa Commune



(This map is the result by field modification (November 2005) of forest resource and forest land change monitoring in year 2004. Topographical map: UTM, scale 1:25 000 based on a contour line map from the Government Office.) Village boundary is tentative drawing based on the information collected in 2005. Land parcel boundary is tentative drawing on the information collected in 2003 and based on results of ground truths with GPS check in February - 2006.)

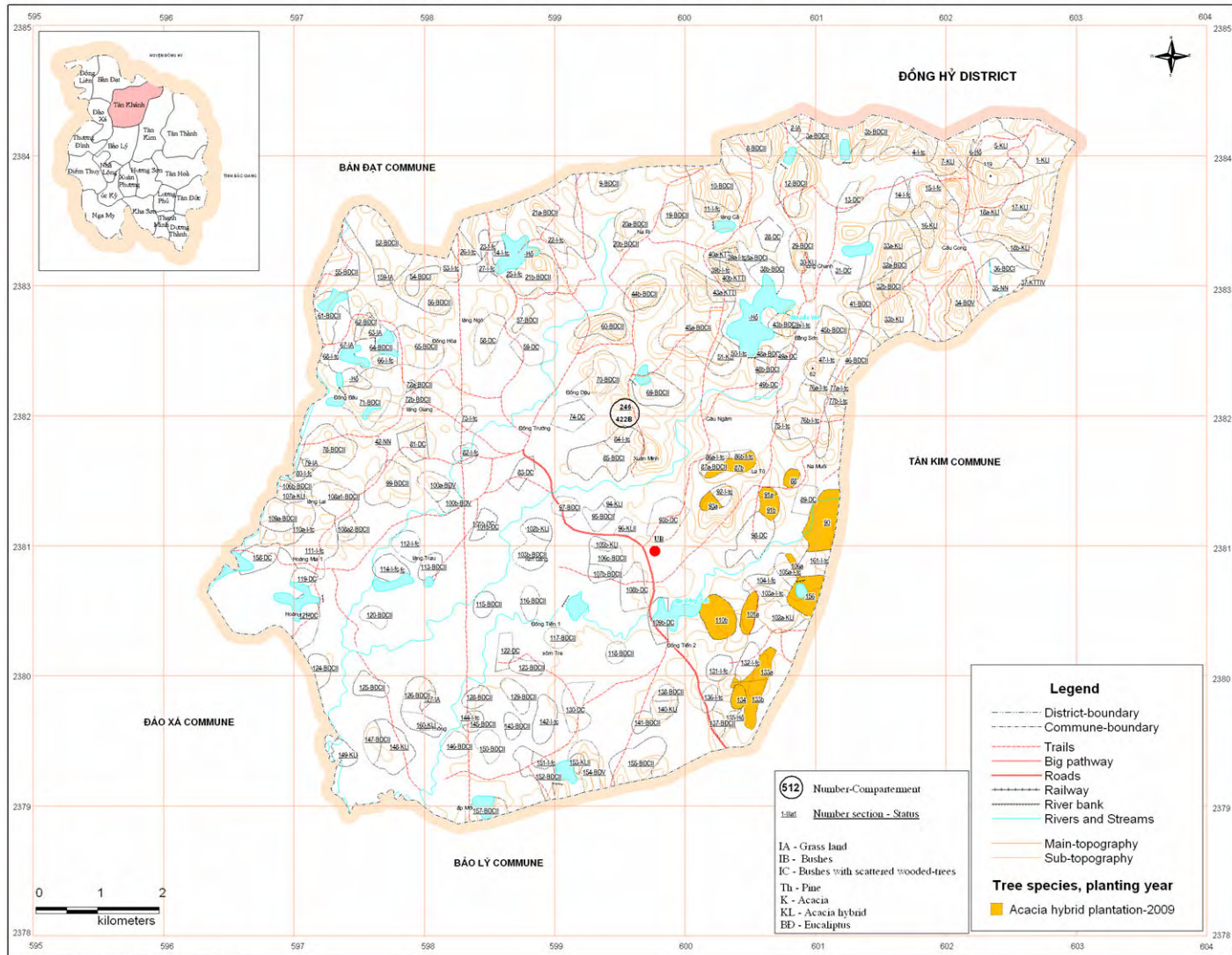
Commune: Tan Khanh

Year of plantation: Yr. 3rd

Year of harvesting: Yr. 10th

Village	Block	Plot no.	Status of land use	Selected specie	Area (ha)	No. of Seedlings	Standing volume (m3)	Sale volume (m3)	Distance skidding
Đông tiến 2	246	101a	Euca. I	A.hybrid	3	5,478	432	302	50
Đông tiến 2	246	106a	Euca. I	A.hybrid	0.9	1,643	130	91	100
Đông tiến 2	246	110b	Euca. II	A.hybrid	7.2	13,147	1037	726	200
Đông tiến 2	246	133a	Euca. II	A.hybrid	3.2	5,843	461	323	150
Đông tiến 2	246	133b	Euca. II	A.hybrid	4.5	8,217	738	517	200
Đông tiến 2	246	134	Euca. II	A.hybrid	1.8	3,287	295	207	200
Đông tiến 2	246	156	Euca. II	A.hybrid	6.1	11,139	878	615	200
La Tú	246	90	Euca. I	A.hybrid	9.6	17,530	1382	968	200
La Tú	246	93a	Euca. I	A.hybrid	1.6	2,922	262	184	150
La Tú	246	87b	Euca. II	A.hybrid	3.7	6,756	607	425	150
La Tú	246	88	Euca. II	A.hybrid	1.3	2,374	213	149	50
La Tú	246	91a	Euca. II	A.hybrid	0.8	1,461	131	92	50
La Tú	246	91b	Euca. II	A.hybrid	2.3	4,200	331	232	100
Total					46	83,996	6,897	4,831	

Plantation plan for 2009 in Tan Khanh Commune



This maps the results by final modification (November 2005) of forest resource and forest land change monitoring in year 2004. Topographical map: UTM, scale 1:25,000 based on a contour line map from the Government Office. Land parcel boundary is tentative drawing on the information collected in 2005 and based on results of ground truths with GPS check in February - 2006.

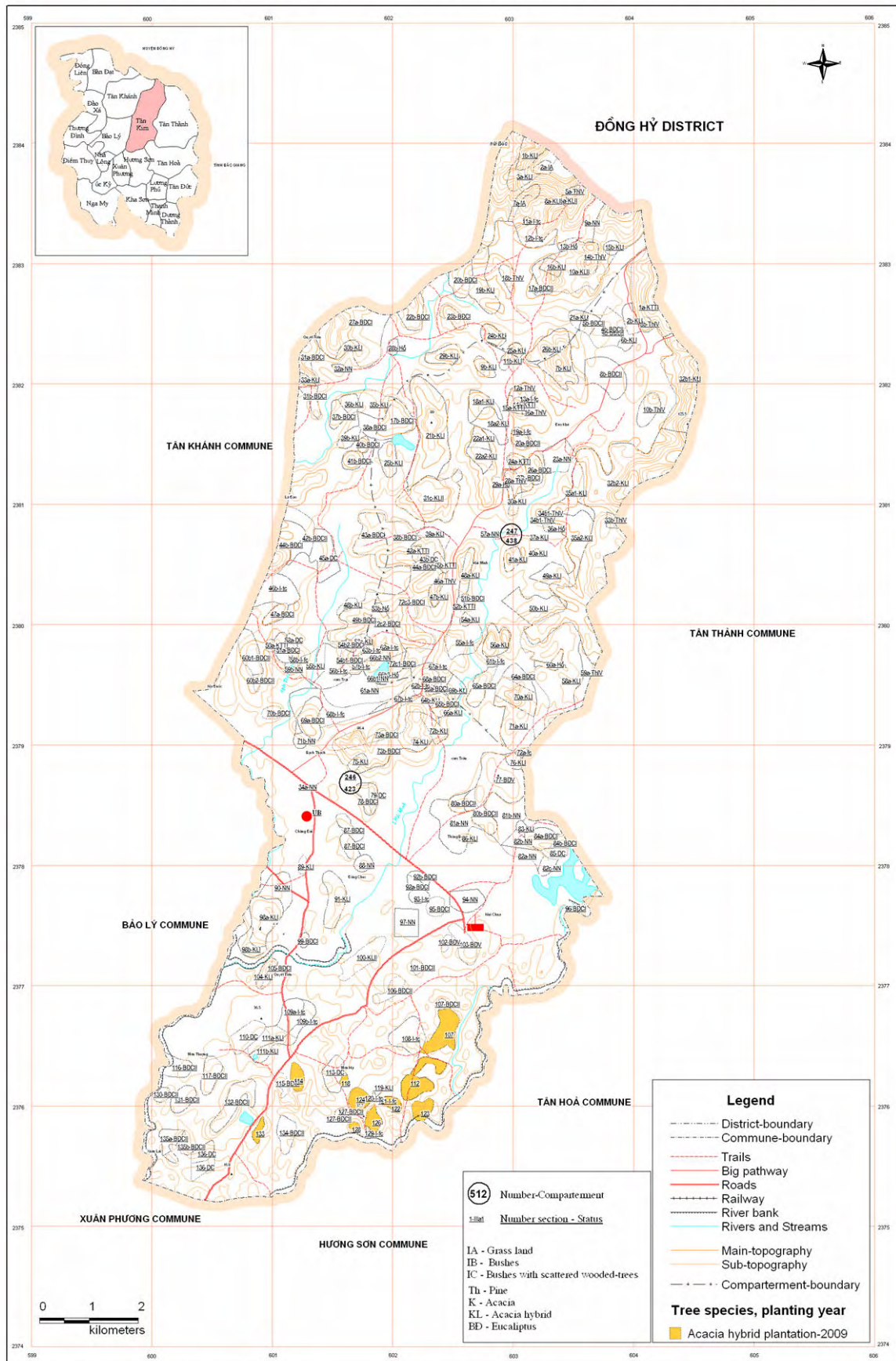
Commune: Tan Kim

Year of plantation: Yr. 3rd

Year of harvesting: Yr. 10th

Village	Block	Plot no.	Status of land use	Selected specie	Area (ha)	No. of Seedlings	Standing volume (m3)	Sale volume (m3)	Distance skidding
mon hã	246	114	Euca. I	A.hybrid	2.21	4,035	362	254	100
mon hã	246	118	Euca. I	A.hybrid	0.44	803	63	44	50
mon hã	246	107b	Euca. II	A.hybrid	6.3	11,504	907	635	200
mon hã	246	112	Euca. II	A.hybrid	6.18	11,285	890	623	150
mon hã	246	122	Euca. II	A.hybrid	1.33	2,429	192	134	100
mon hã	246	123	Euca. II	A.hybrid	2.49	4,547	359	251	100
mon hã	246	124	Euca. II	A.hybrid	2.8	5,113	403	282	100
mon hã	246	126	Euca. II	A.hybrid	2.03	3,707	292	205	100
mon hã	246	128	Euca. II	A.hybrid	0.46	840	66	46	100
mon hã	246	133	Euca. II	A.hybrid	1.06	1,936	174	122	50
Total					25.30	46,198	3,708	2,596	

Plantation plan for 2009 in Tan Kim Commune



(This map is the result of field modification (november 2005) of forest resource and forest land change monitoring in year 2004
 Topographical map: UTM, scale 1:75,000
 based on a contour line map from the Government Office)
 Land parcel boundary is tentative drawing on the information collected in 2005 and based on results of ground checks with GPS check in February - 2006)

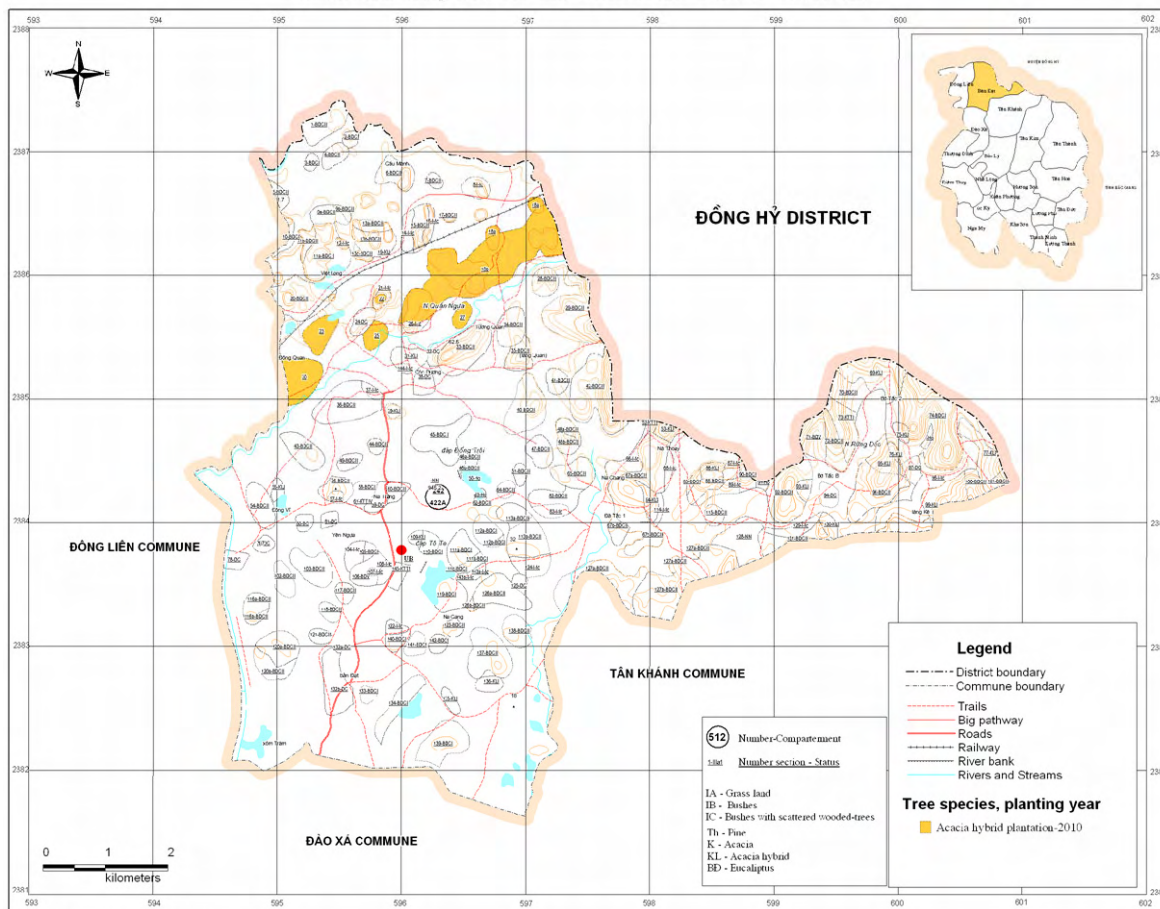
Commune: Bàn Đạt

Year of plantation: Yr. 4th

Year of harvesting: Yr. 11th

Village	Block	Plot no.	Status of land use	Selected specie	Area (ha)	No. of Seedlings	Standing volume (m3)	Sale volume (m3)	Distance skidding (m)
Đông quan	242	22	Euca. I	A.hybrid	0.5	913	72	50	50
Đông quan	242	18a	Euca. II	A.hybrid	1.9	3,469	274	192	300
Đông quan	242	18b	Euca. II	A.hybrid	46	83,996	6624	4637	300
Đông quan	242	23	Euca. II	A.hybrid	5.7	10,408	821	575	200
Đông quan	242	25	Euca. II	A.hybrid	3.3	6,026	475	333	150
Đông quan	242	27	Euca. II	A.hybrid	2.3	4,200	331	232	100
Đông quan	242	30	Euca. II	A.hybrid	9.2	16,799	1325	927	200
Total					68.9	125,811	9,922	6,946	

Plantation plan for 2010 in Ban Dat Commune



This maps the results by field modification (November 2003) of forest resource and forest land change monitoring in year 2004. Topographical map: 1:25,000 based on a contour line map from the Government Office. Land parcel boundary is tentative drawing on the information related to 2003 and based on results of ground tracks with GPS check in February - 2006.