

**The Study on Master Plan for Promotion
of Mining Industry
in
Republic of Serbia
Final Report
(Summary)**

March 2008

**Japan International Cooperation Agency
Economic Development Department**

ED
JR
08-025

Preface

In response to a request from the Government of the Republic of Serbia, the Government of Japan decided to carry out the Master Plan Study for Promoting the Mining Industry of Serbia. The study was implemented by JICA, the Japan International Cooperation Agency.

For a total of 6 times between December 2006 and March 2008, JICA dispatched to Serbia survey teams comprised of members from Mitsui Mineral Development Engineering Co., Ltd., including Team Leader Yuji Nishikawa; RTT Mining.; Overseas Vocational Training Association; and MESCO.

On-site surveys were conducted with the cooperation of relevant Serbian government officials, then the team members returned to their respective home countries where they worked to complete this report.

It is our hope that the present report will help to promote this study and serve as a vehicle for strengthening friendly relations between Japan and Serbia.

In closing, we would like to express our sincere gratitude to everyone who helped to make this report possible.

March 2008

Seiichi NAGATSUKA
Vice President
Japan International Cooperation Agency

Seiichi NAGATSUKA
Vice President
Japan International Cooperation Agency

Letter of Transmittal

It is with great pleasure that we submit to you this final report on the Master Plan Study on Promotion of the Mining Industry in the Republic of Serbia.

This study was conducted by Mitsui Mineral Development Engineering Co., Ltd. under contract with your organization for a 16-month period from December 2006 to March 2008. This report was written to provide a road map for the sustainable development of the mining industry in Serbia and to compile mining sector investment policies into a Master Plan that is compatible with a market economy..

The Master Plan proposes measures for rebuilding the mining sector, strategies for modernizing mine operations and management, measures for countering pollution from mining activities, practical strategies for attracting foreign and domestic investment in the Serbian mining sector, guidelines for development, and an effective action program for mining promotion. Promoting exploration and development, and the mining industry in general, and attracting investment from both foreign and domestic sources, are very important to the overall social and economic development of the Republic of Serbia. As such, it is our expressed desire that the Serbian Government make it a top priority to bring this plan to fruition.

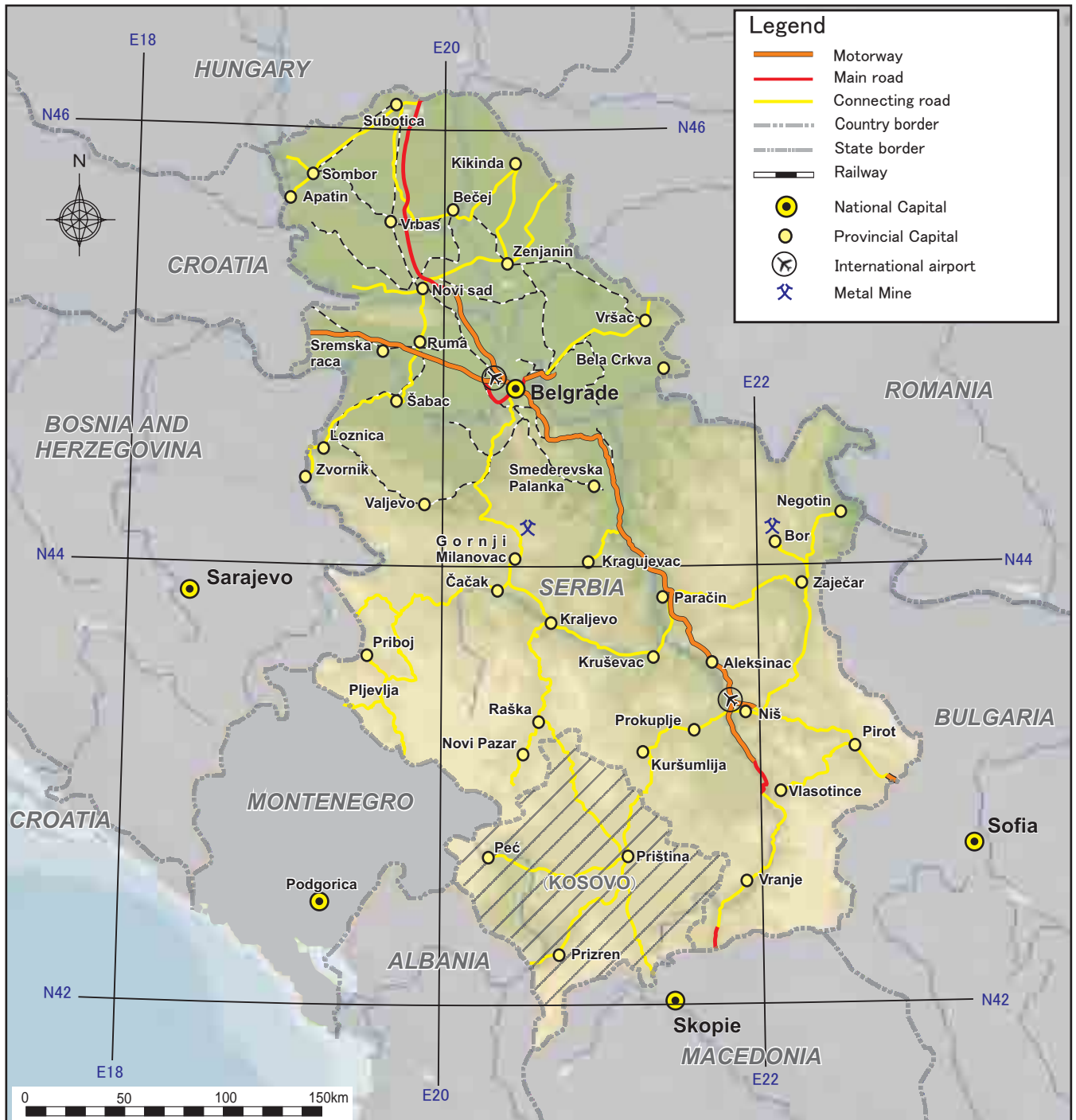
In closing, we would like to express our sincere gratitude to your organization, the Japanese Ministry of Foreign Affairs, and the Ministry of Economy, Trade and Industry for your support and guidance with this project. We would also like to thank the Serbian Government, the Ministry of Mining and Energy, the Ministry of Environmental Protection, the Ministry of Finance, the Japanese Embassy in Serbia, the JICA-Balkan Office, and everyone else who provided their services to assist us with the study.

March 2008

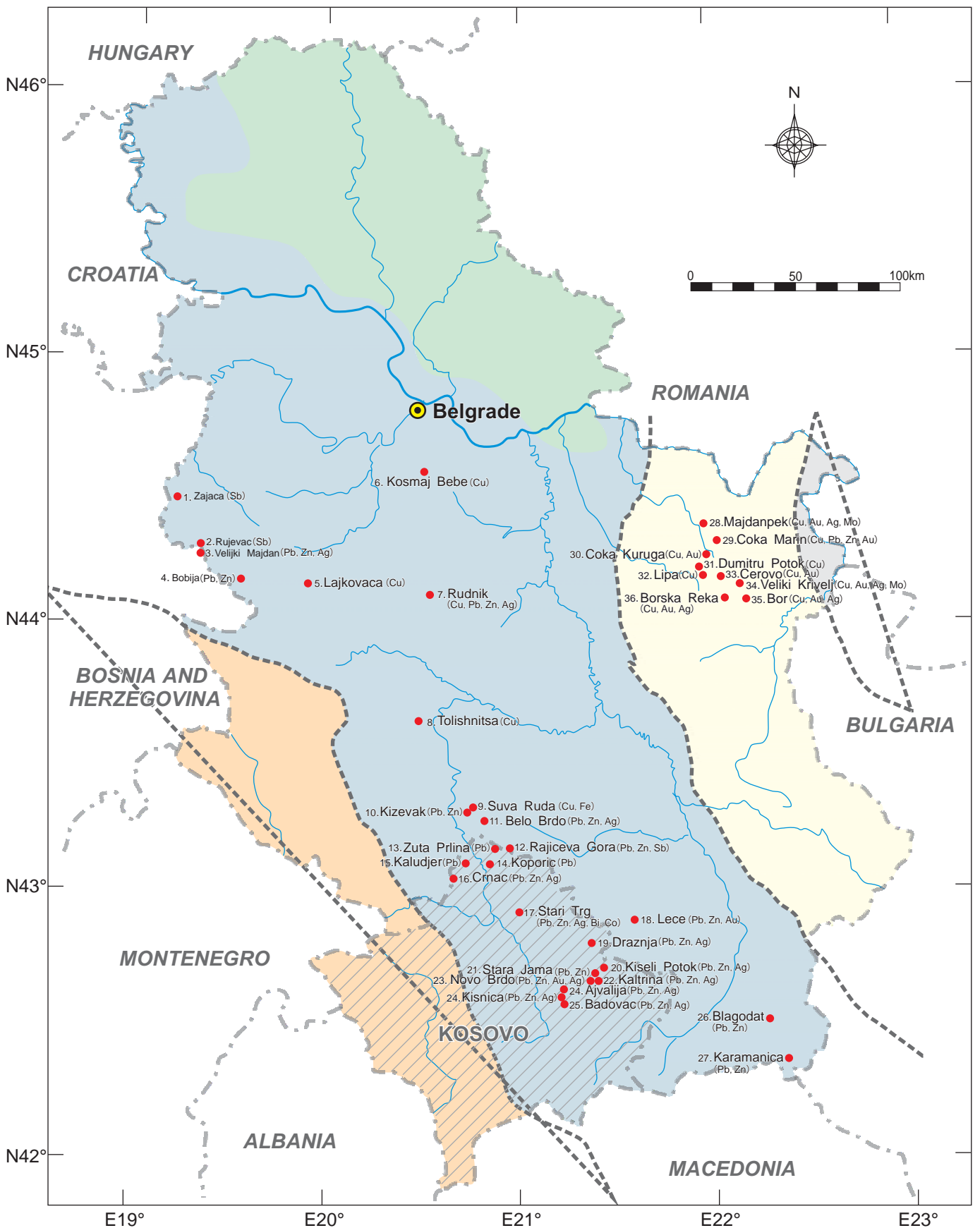
Yuji Nishikawa
Team Leader
Survey Team for the Master Plan Study for Promoting
the Mining Industry of the Republic of Serbia





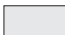

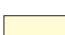

Republic of Serbia



Location Map of the Republic of Serbia

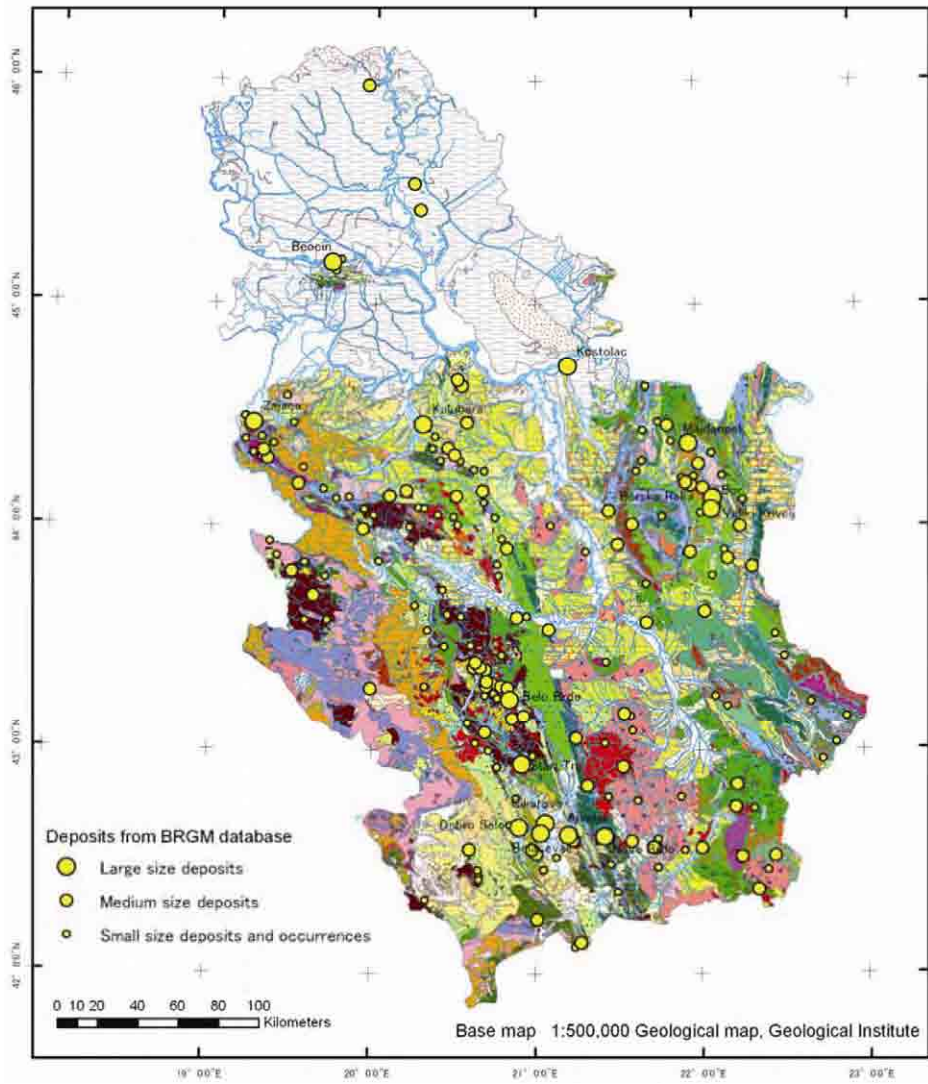


Metallogenic province

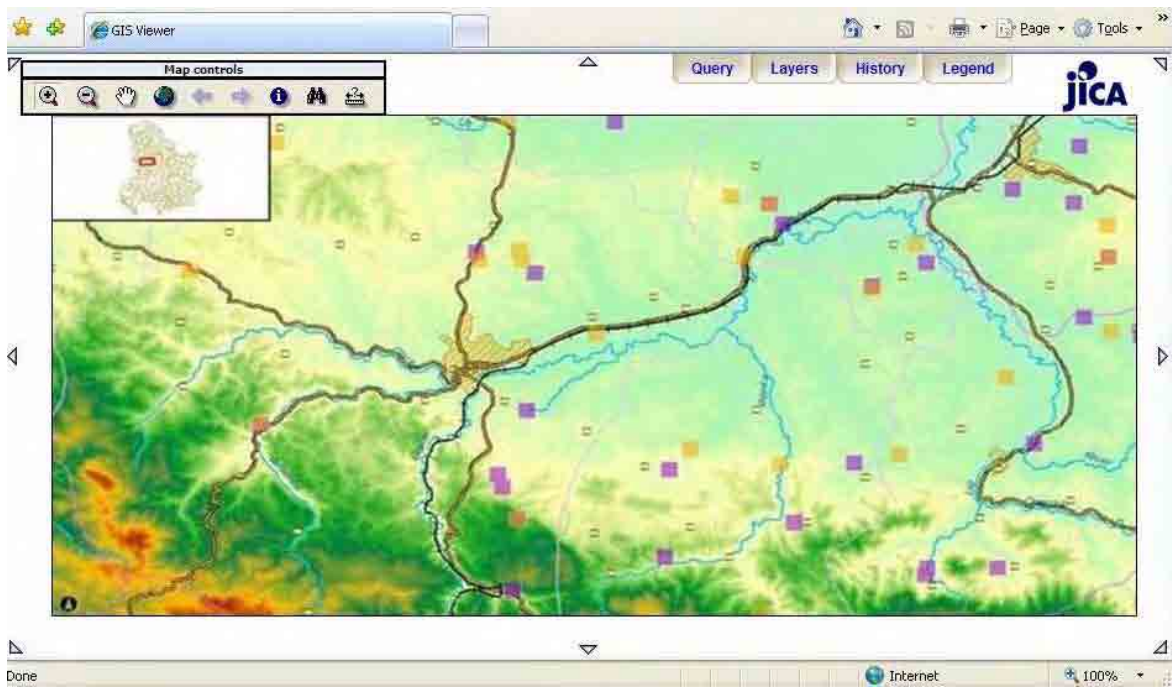
- | | |
|--|---|
|  Oil-gas province |  Serbo-Macedonian |
|  Dacian |  Dinaric |
|  Carpatho-Balkanian |  Base Metals Mineral Deposits
(Medium to Large Scale) |

(after Geological Atlas of Serbia 1:2,000,000 No14-Metallogenic map and map of ore formations, 2002)

Major Mineral Deposits in the Republic of Serbia



Geological information for GIS database with mineral deposits and occurrences from the BRGM's database



New designed web-GIS window for the MEM website