

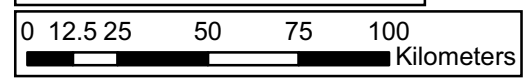
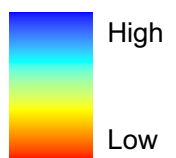
Basic Index

1. Borehole Yield (m³/h)
2. Drilling Depth (m)
3. Static Water Level (m)
4. Water Quality (EC)
5. Water Quality (Fluoride)

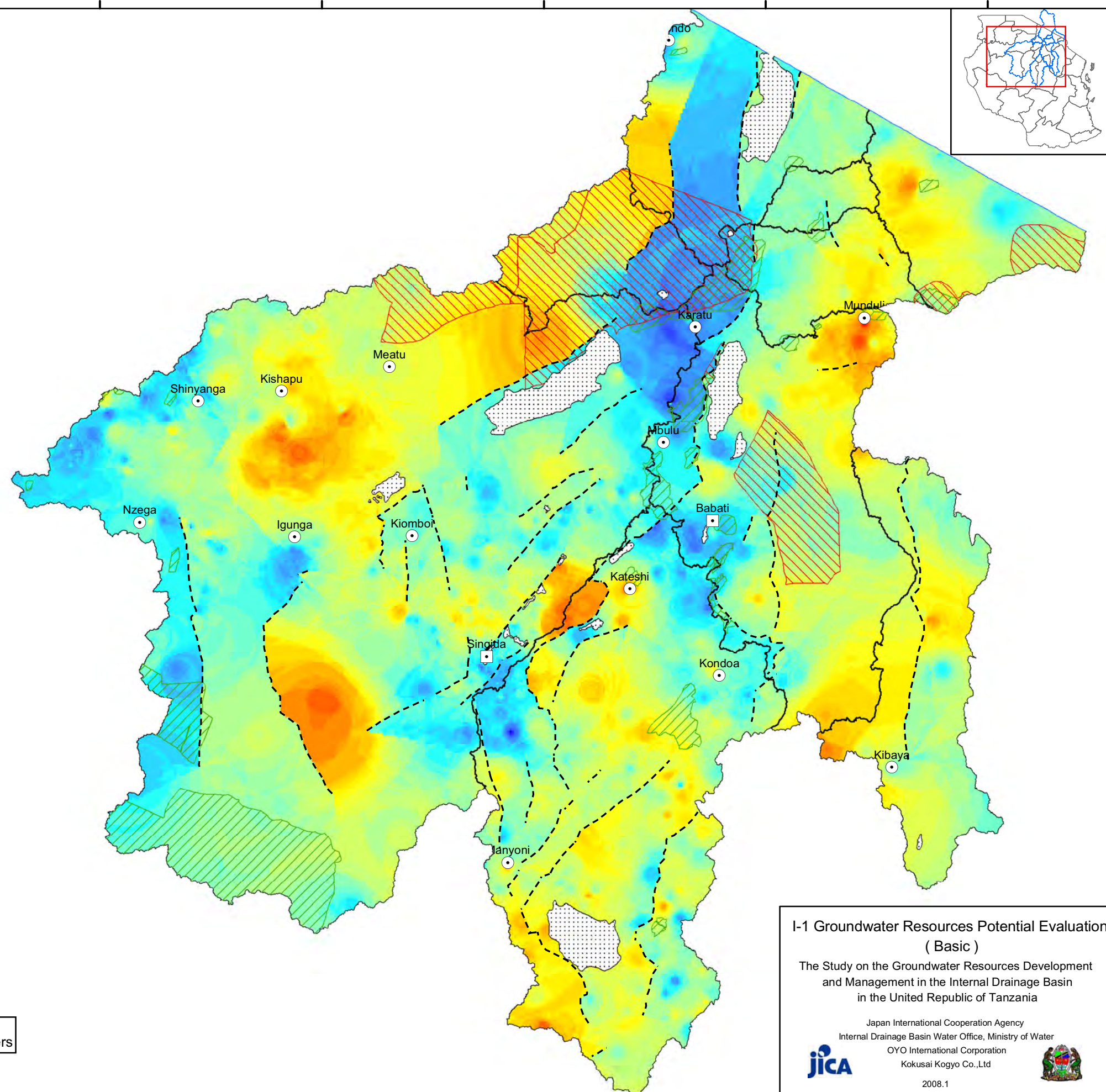
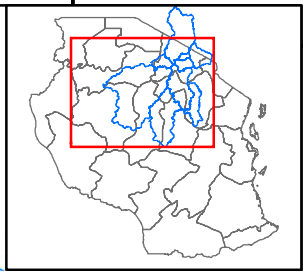
Legend

- ▣ Region Capital
- District Capital
- - - Major Fault
- ▨ Lake
- ▨ National Park
- ▨ Forest Reserve
- ▭ Sub Basin

Potential Evaluation



Coordinate System: Geographic, Arc 1960 (Spheroid:Clarke 1880)



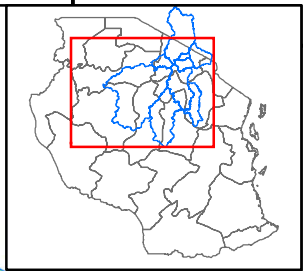
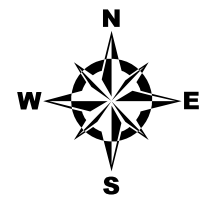
I-1 Groundwater Resources Potential Evaluation (Basic)

The Study on the Groundwater Resources Development and Management in the Internal Drainage Basin in the United Republic of Tanzania

Japan International Cooperation Agency
Internal Drainage Basin Water Office, Ministry of Water
OYO International Corporation
Kokusai Kogyo Co.,Ltd



2008.1

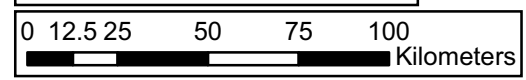


Legend

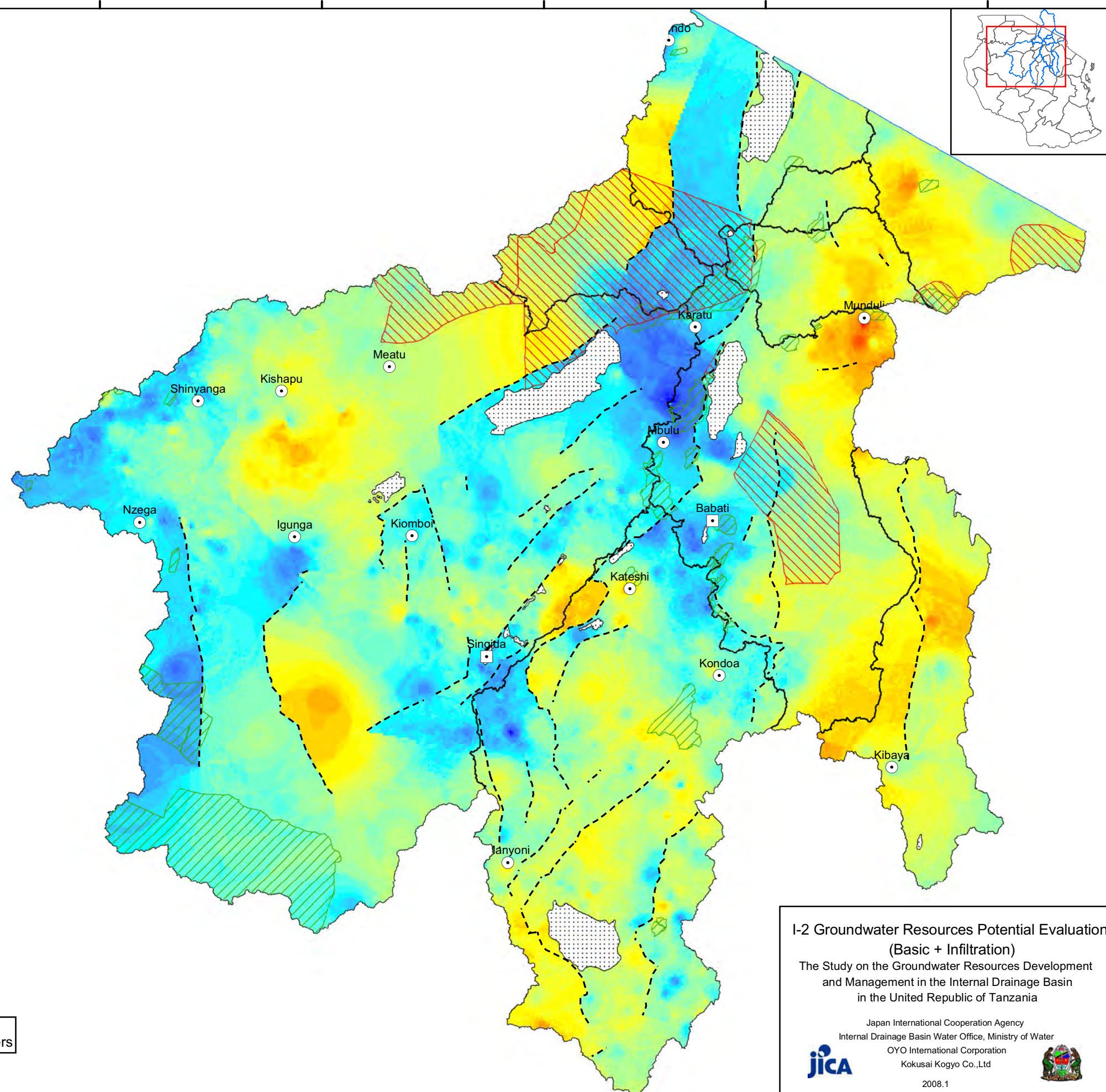
- ▣ Region Capital
- District Capital
- - - Major Fault
- ▨ Lake
- ▨ National Park
- ▨ Forest Reserve
- ▭ Sub Basin

Potential Evaluation

High
Low



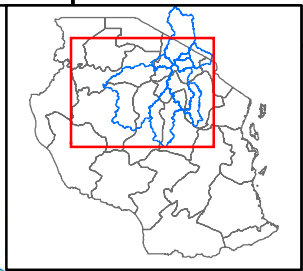
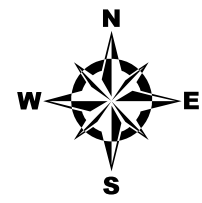
Coordinate System: Geographic, Arc 1960 (Spheroid: Clarke 1880)






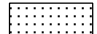



**I-2 Groundwater Resources Potential Evaluation
(Basic + Infiltration)**
The Study on the Groundwater Resources Development
and Management in the Internal Drainage Basin
in the United Republic of Tanzania

Japan International Cooperation Agency
Internal Drainage Basin Water Office, Ministry of Water
OYO International Corporation
Kokusai Kogyo Co., Ltd


2008.1



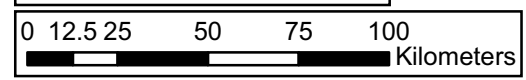
Legend

-  Region Capital
-  District Capital
-  Major Fault
-  Lake
-  National Park
-  Forest Reserve
-  Sub Basin

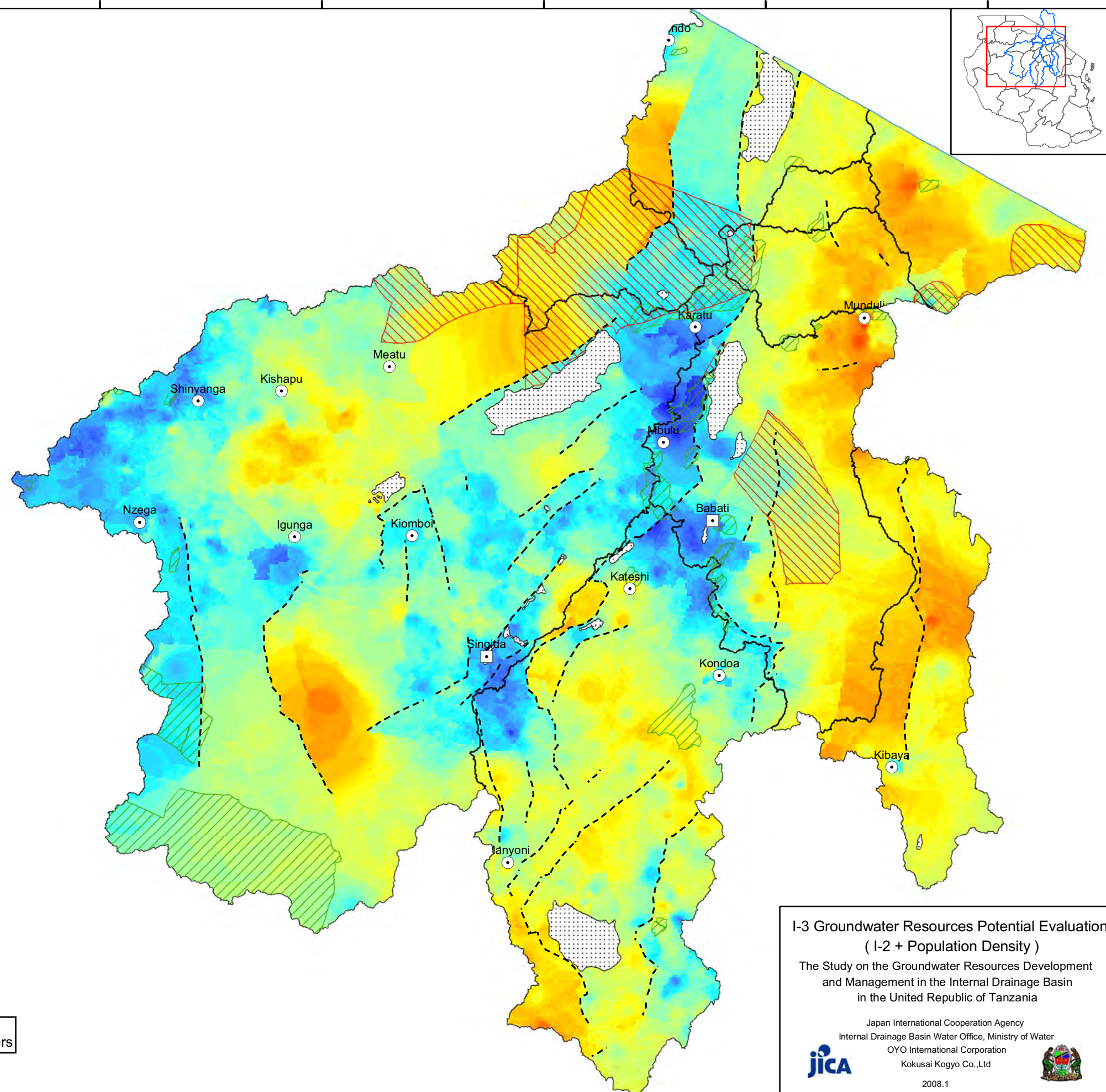
Potential Evaluation



High
Low




Coordinate System: Geographic, Arc 1960 (Spheroid:Clarke 1880)



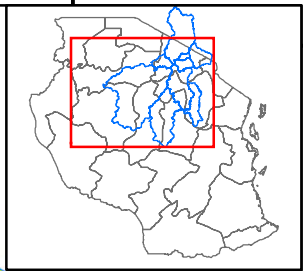
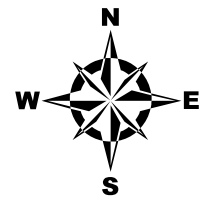
**I-3 Groundwater Resources Potential Evaluation
(I-2 + Population Density)**

The Study on the Groundwater Resources Development
and Management in the Internal Drainage Basin
in the United Republic of Tanzania

Japan International Cooperation Agency
Internal Drainage Basin Water Office, Ministry of Water
OYO International Corporation
Kokusai Kogyo Co.,Ltd



2008.1

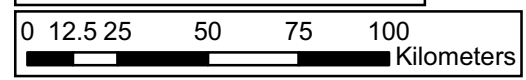


Legend

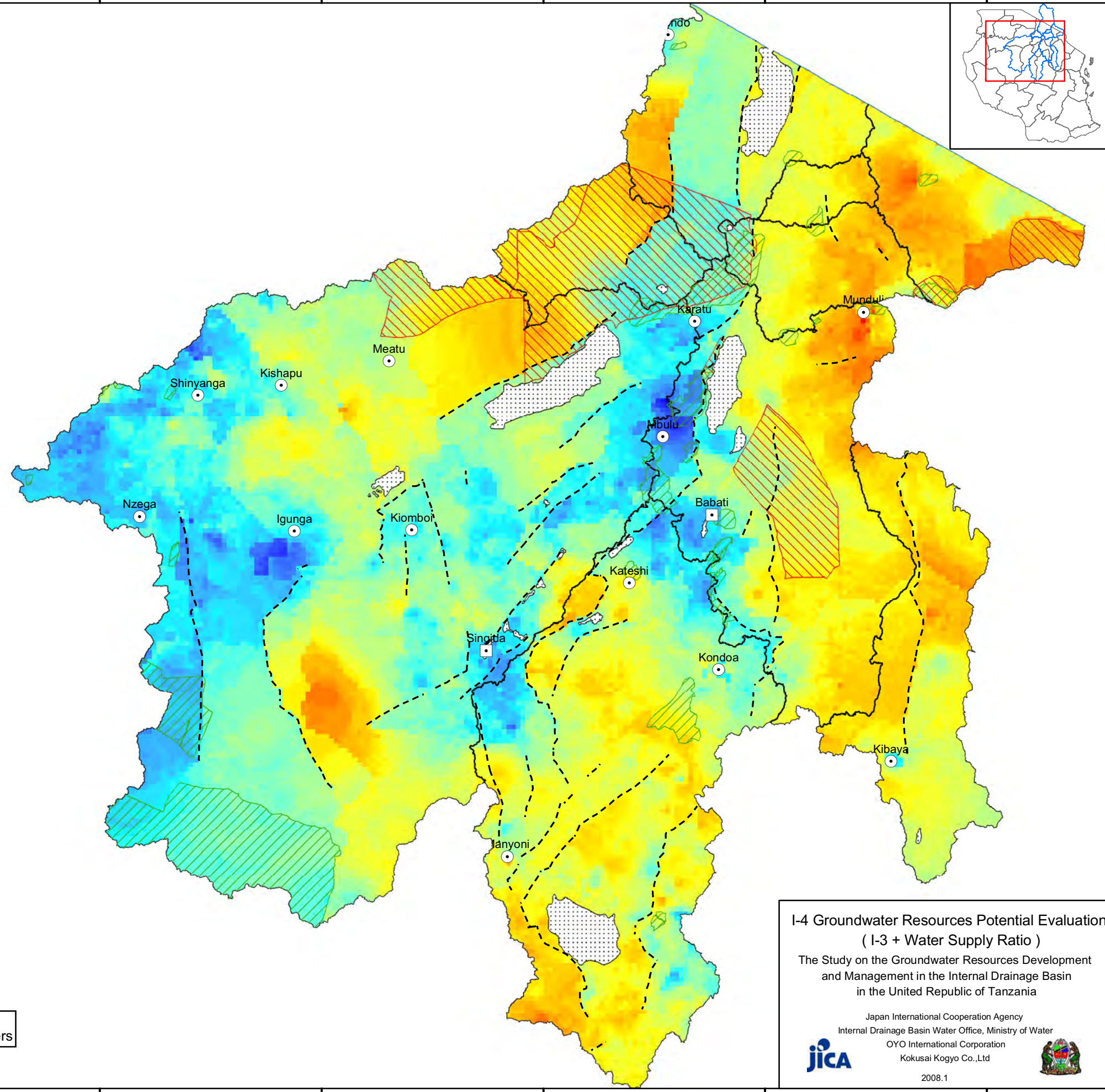
- ▣ Region Capital
- District Capital
- - - Major Fault
- ▨ Lake
- ▨ National Park
- ▨ Forest Reserve
- ▭ Sub Basin

Potential Evaluation

High
Low



Coordinate System: Geographic, Arc 1960 (Spheroid: Clarke 1880)

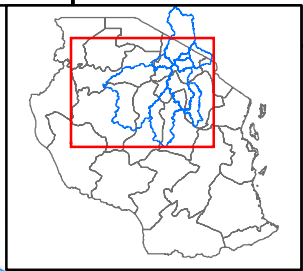
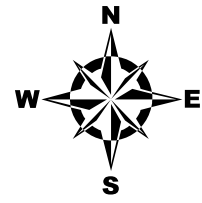


I-4 Groundwater Resources Potential Evaluation
(I-3 + Water Supply Ratio)

The Study on the Groundwater Resources Development and Management in the Internal Drainage Basin in the United Republic of Tanzania

Japan International Cooperation Agency
Internal Drainage Basin Water Office, Ministry of Water
OYO International Corporation
Kokusai Kogyo Co.,Ltd

2008.1

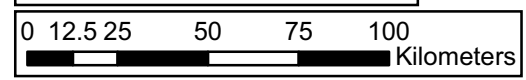


Legend

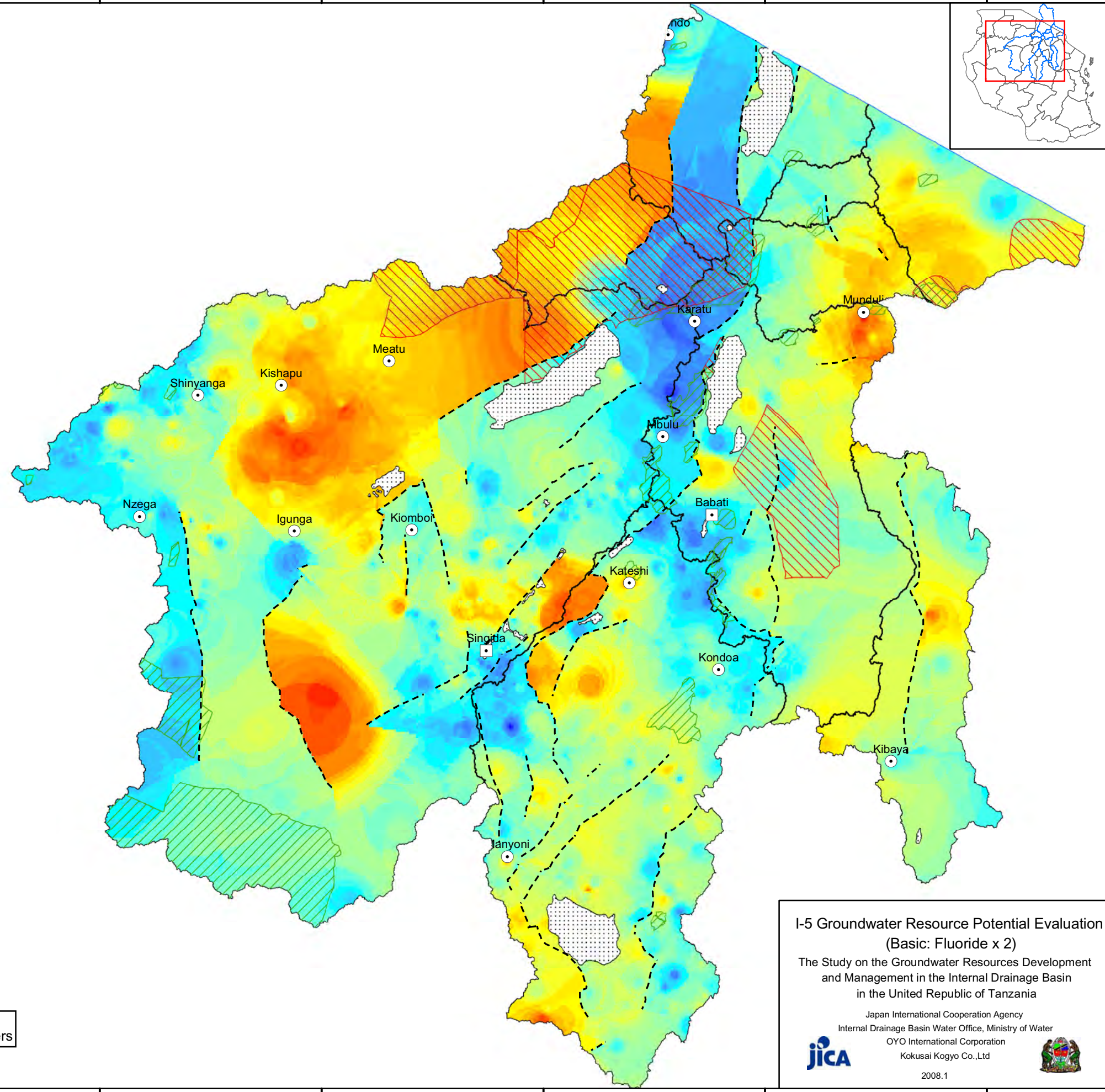
- ▣ Region Capital
- District Capital
- - - Major Fault
- ▨ Lake
- ▨ National Park
- ▨ Forest Reserve
- ▭ Sub Basin

Potential Evaluation

High
Low



Coordinate System: Geographic, Arc 1960 (Spheroid: Clarke 1880)



I-5 Groundwater Resource Potential Evaluation
(Basic: Fluoride x 2)

The Study on the Groundwater Resources Development and Management in the Internal Drainage Basin in the United Republic of Tanzania

Japan International Cooperation Agency
Internal Drainage Basin Water Office, Ministry of Water
OYO International Corporation
Kokusai Kogyo Co., Ltd

2008.1