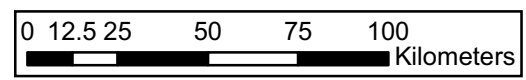


Legend

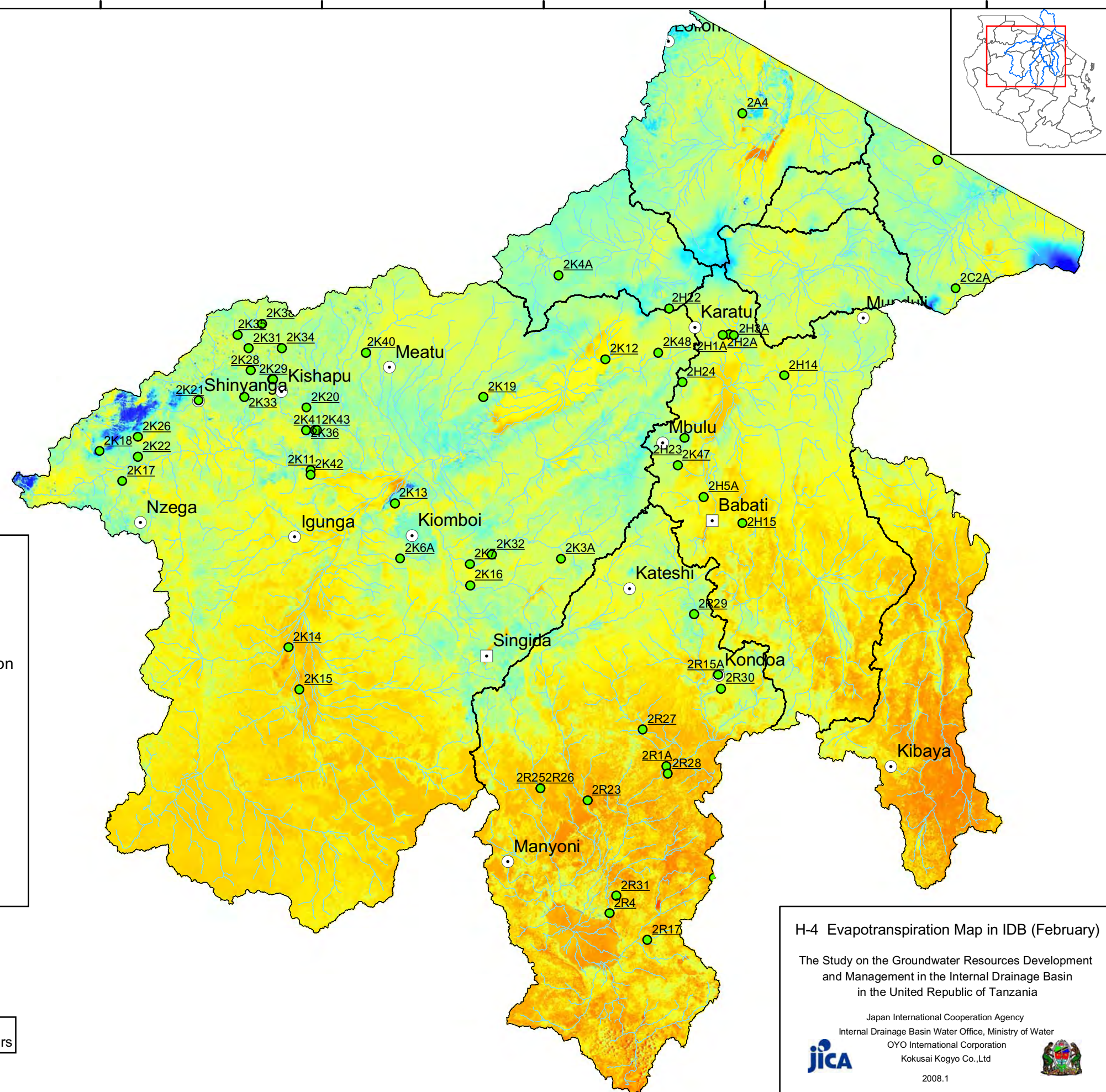
- Region Capital
- District Capital
- Hydrometric Gauging Station
- Stream
- ▭ Sub Basin

Evapotranspiration (mm/month)

High : 80
Low : 20



Coordinate System: Geographic, Arc 1960 (Spheroid:Clarke 1880)

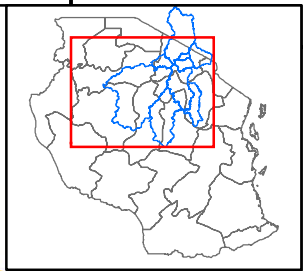
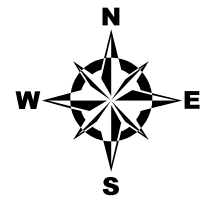


H-4 Evapotranspiration Map in IDB (February)

The Study on the Groundwater Resources Development and Management in the Internal Drainage Basin in the United Republic of Tanzania

Japan International Cooperation Agency
Internal Drainage Basin Water Office, Ministry of Water
OYO International Corporation
Kokusai Kogyo Co., Ltd

2008.1

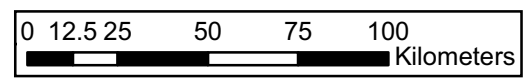


Legend

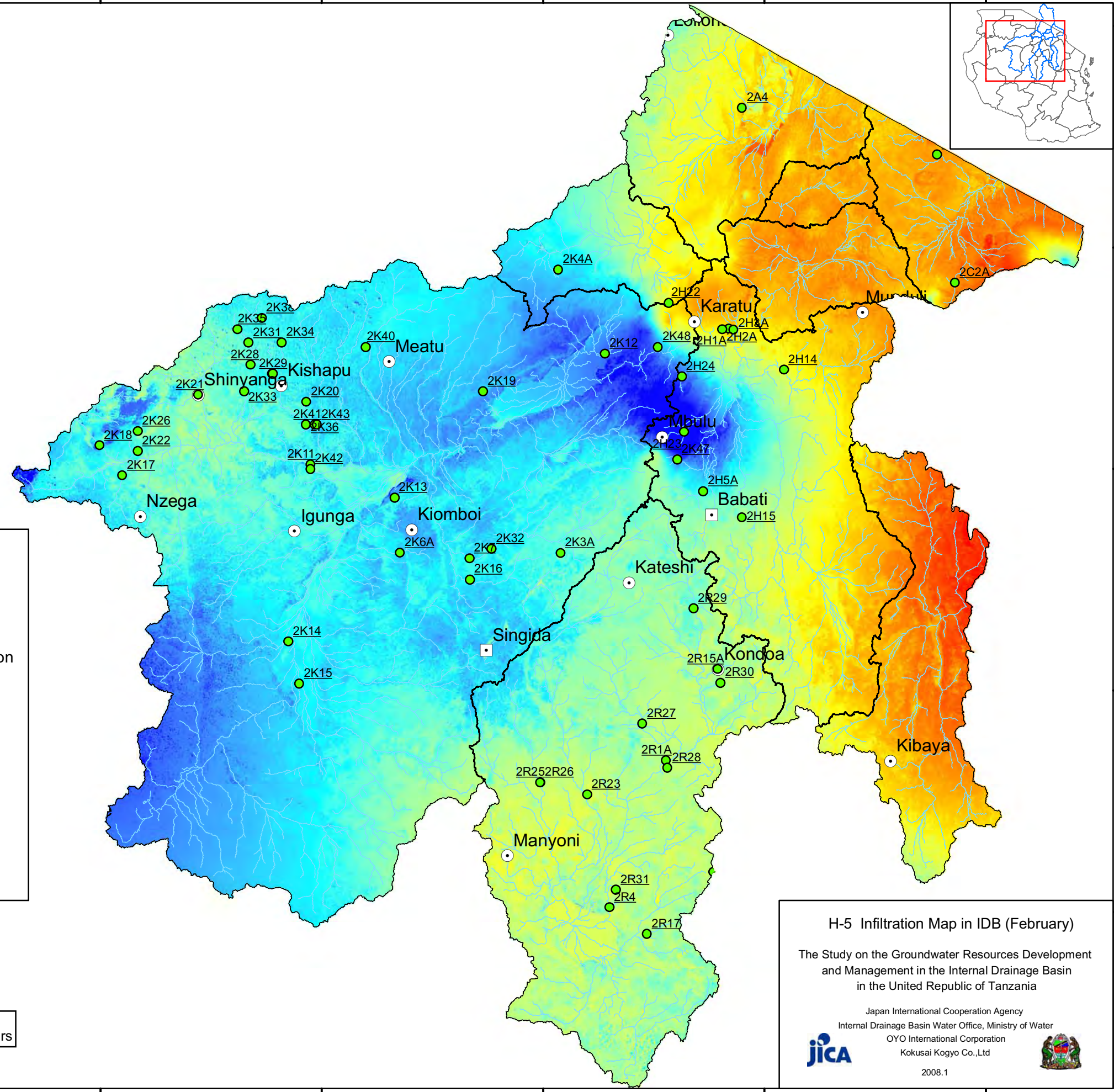
- Region Capital
- District Capital
- Hydrometric Gauging Station
- Stream
- Sub Basin

Infiltration (mm/month)

100
0



Coordinate System: Geographic, Arc 1960 (Spheroid:Clarke 1880)

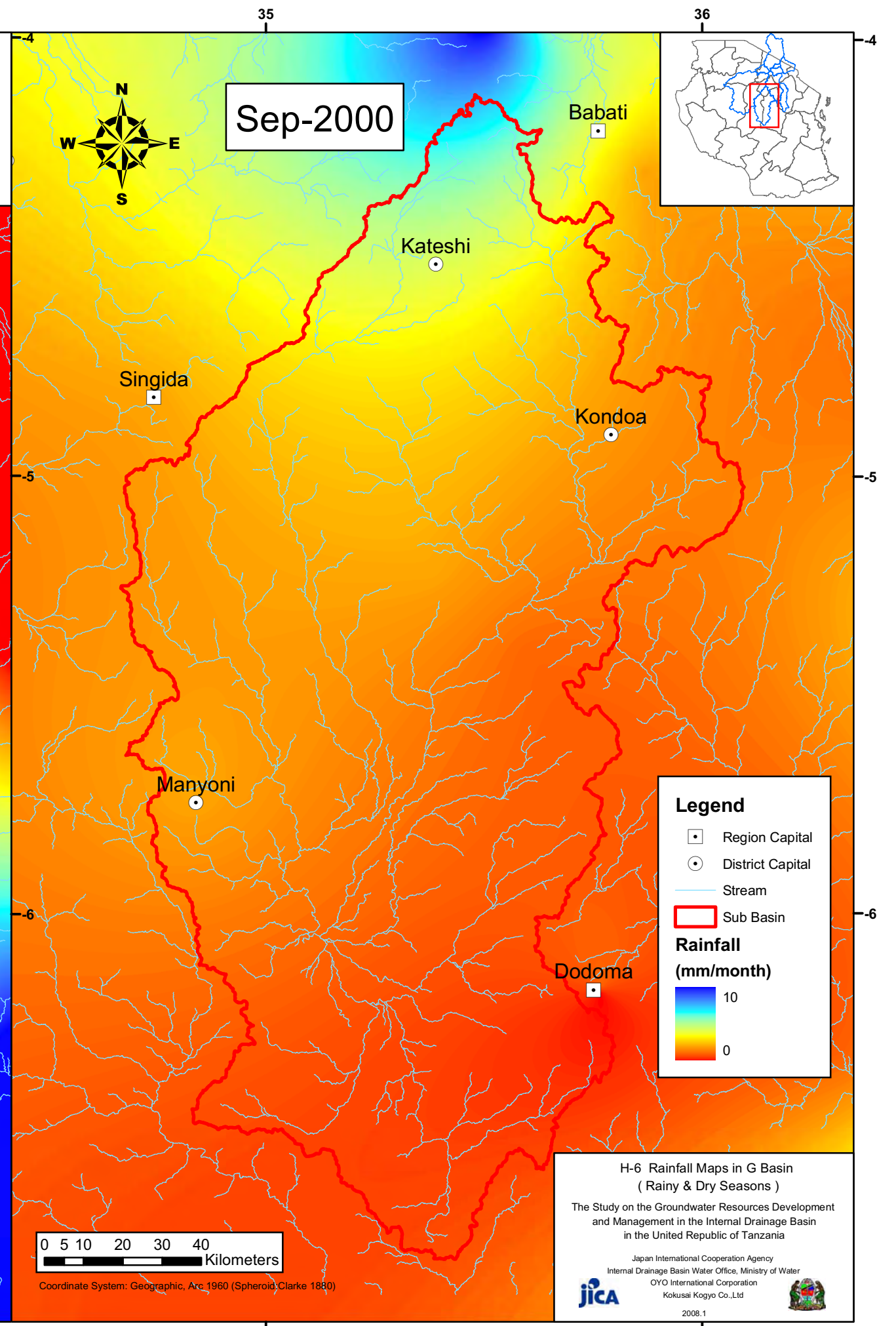
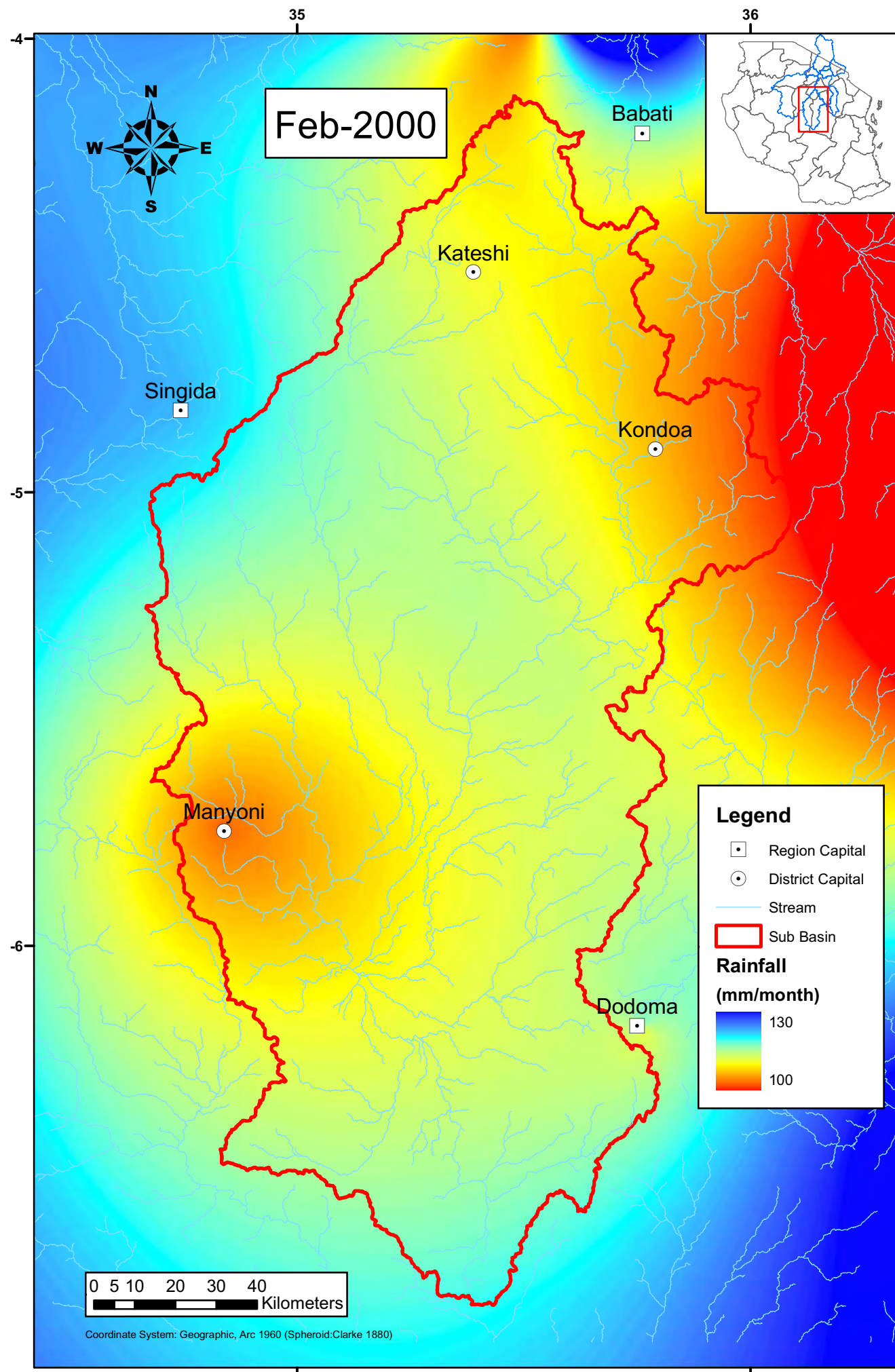


H-5 Infiltration Map in IDB (February)

The Study on the Groundwater Resources Development and Management in the Internal Drainage Basin in the United Republic of Tanzania

Japan International Cooperation Agency
Internal Drainage Basin Water Office, Ministry of Water
OYO International Corporation
Kokusai Kogyo Co., Ltd

2008.1



H-6 Rainfall Maps in G Basin
(Rainy & Dry Seasons)

The Study on the Groundwater Resources Development and Management in the Internal Drainage Basin in the United Republic of Tanzania

Japan International Cooperation Agency
Internal Drainage Basin Water Office, Ministry of Water
OYO International Corporation
Kokusai Kogyo Co., Ltd

2008.1