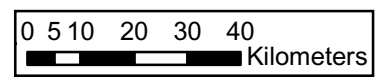


Legend

- Productivity**
- Excellent (over 20 m3/h)
 - Very good (10 - 20 m3/h)
 - Good (8 - 15 m3/h)
 - Fair A (5 - 10 m3/h)
 - Fair B (3 - 7 m3/h)
 - Fair C (2 - 4 m3/h)
 - Poor (1 - 3 m3/h)
 - Very poor (0.5 - 1.5 m3/h)

- Undevelopable
- Lake, Swamp

- Geological Unit**
- Cenozoic Sediment
 - Volcanic Rock
 - Pyroclastic Sediment
 - Granite
 - Bukoban
 - Usagaran
 - Nyanzian
 - Dodoman
 - Mbuga Clay
 - Sub Basin
 - Major Fault
 - Groundwater Flow
 - Static Water Level (m)
 - Fluoride (mg/l)
 - District



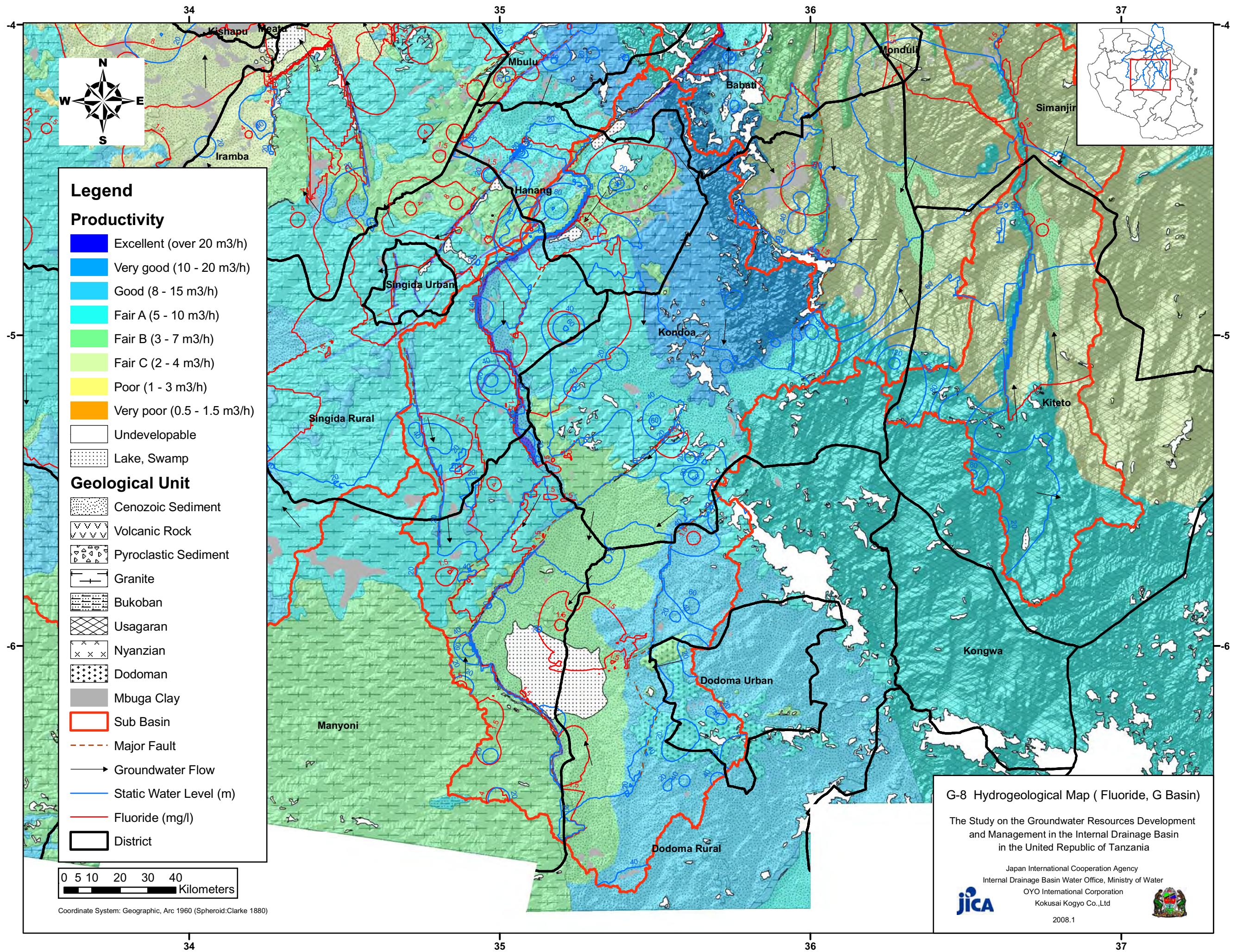
Coordinate System: Geographic, Arc 1960 (Spheroid:Clarke 1880)

G-7 Hydrogeological Map (Fluoride, A Basin)

The Study on the Groundwater Resources Development and Management in the Internal Drainage Basin in the United Republic of Tanzania

Japan International Cooperation Agency
 Internal Drainage Basin Water Office, Ministry of Water
 OYO International Corporation
 Kokusai Kogyo Co.,Ltd
 2008.1





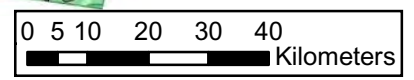
Legend

Productivity

- Excellent (over 20 m³/h)
- Very good (10 - 20 m³/h)
- Good (8 - 15 m³/h)
- Fair A (5 - 10 m³/h)
- Fair B (3 - 7 m³/h)
- Fair C (2 - 4 m³/h)
- Poor (1 - 3 m³/h)
- Very poor (0.5 - 1.5 m³/h)
- Undevelopable
- Lake, Swamp

Geological Unit

- Cenozoic Sediment
- Volcanic Rock
- Pyroclastic Sediment
- Granite
- Bukoban
- Usagaran
- Nyanzian
- Dodoman
- Mbuga Clay
- Sub Basin
- Major Fault
- Groundwater Flow
- Static Water Level (m)
- Fluoride (mg/l)
- District



Coordinate System: Geographic, Arc 1960 (Spheroid: Clarke 1880)

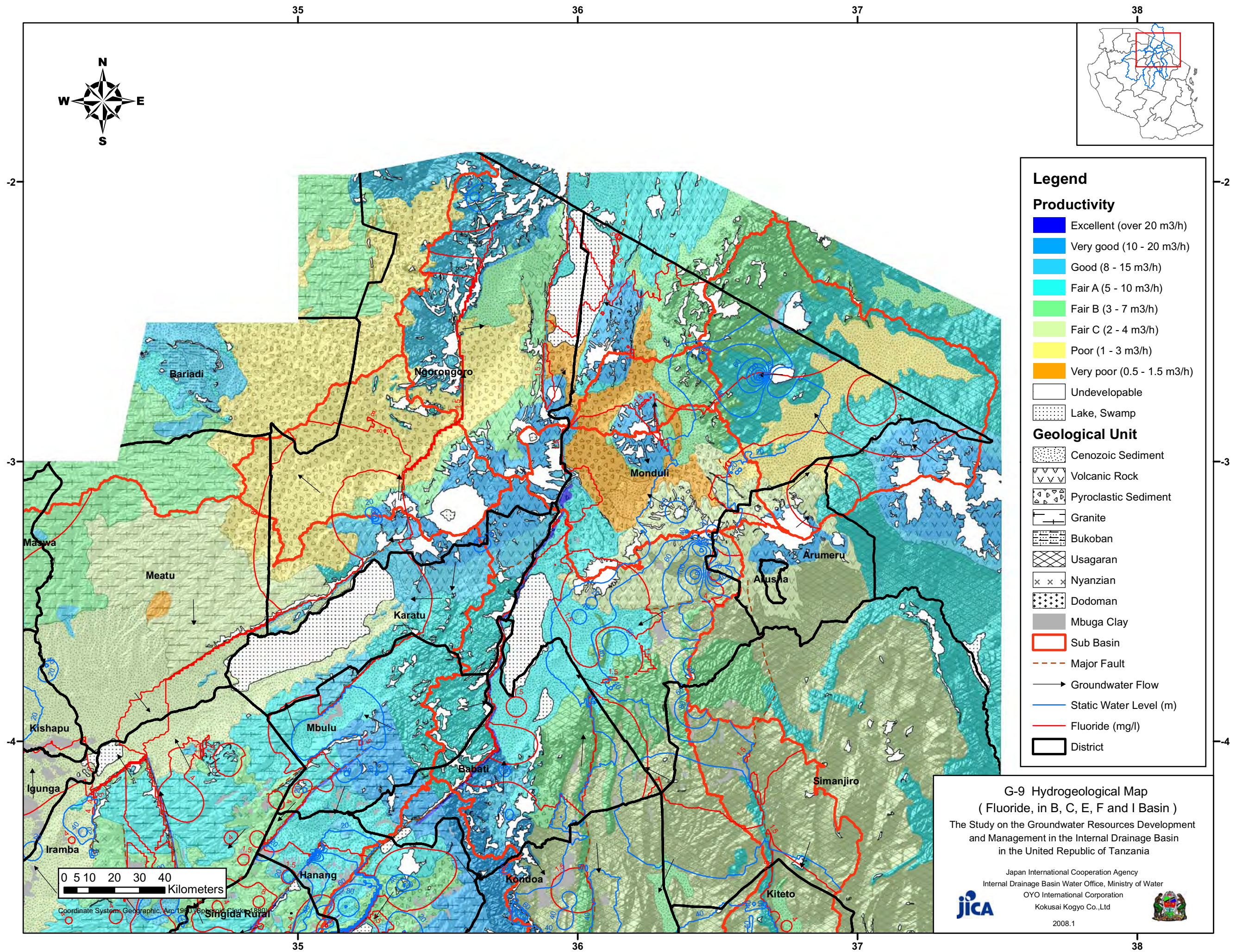
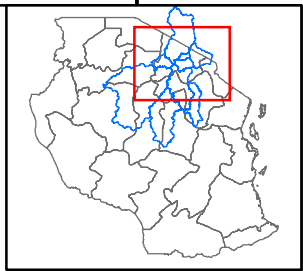
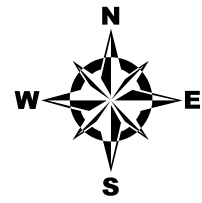
G-8 Hydrogeological Map (Fluoride, G Basin)

The Study on the Groundwater Resources Development and Management in the Internal Drainage Basin in the United Republic of Tanzania

Japan International Cooperation Agency
 Internal Drainage Basin Water Office, Ministry of Water
 OYO International Corporation
 Kokusai Kogyo Co., Ltd



2008.1



Legend

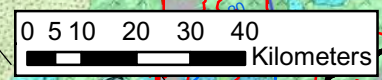
Productivity

- Excellent (over 20 m³/h)
- Very good (10 - 20 m³/h)
- Good (8 - 15 m³/h)
- Fair A (5 - 10 m³/h)
- Fair B (3 - 7 m³/h)
- Fair C (2 - 4 m³/h)
- Poor (1 - 3 m³/h)
- Very poor (0.5 - 1.5 m³/h)

- Undevelopable
- Lake, Swamp

Geological Unit

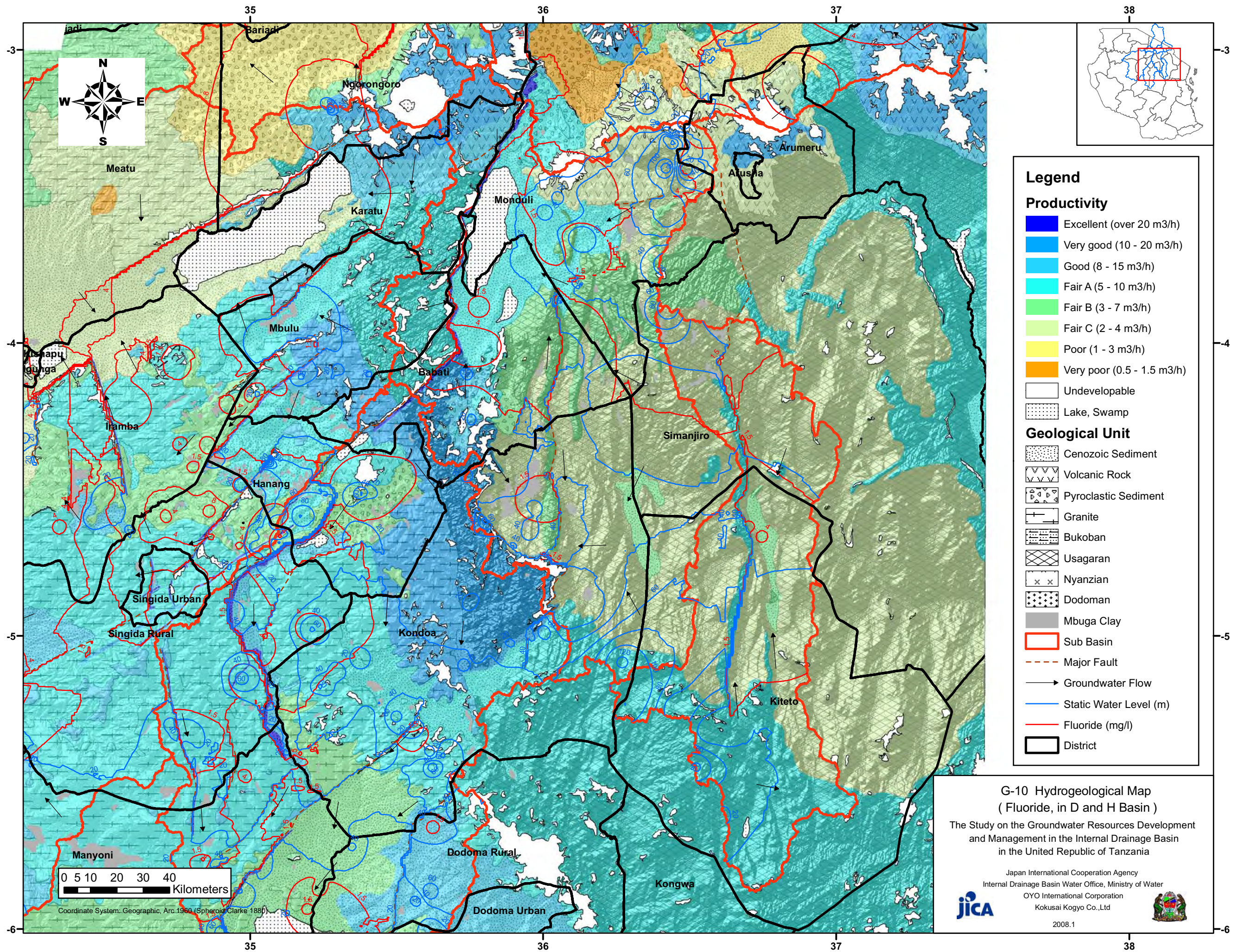
- Cenozoic Sediment
- Volcanic Rock
- Pyroclastic Sediment
- Granite
- Bukoban
- Usagaran
- Nyanzian
- Dodoman
- Mbuga Clay
- Sub Basin
- Major Fault
- Groundwater Flow
- Static Water Level (m)
- Fluoride (mg/l)
- District



G-9 Hydrogeological Map
(Fluoride, in B, C, E, F and I Basin)
The Study on the Groundwater Resources Development and Management in the Internal Drainage Basin in the United Republic of Tanzania

Japan International Cooperation Agency
Internal Drainage Basin Water Office, Ministry of Water
OYO International Corporation
Kokusai Kogyo Co., Ltd

2008.1



Legend

- Productivity**
- Excellent (over 20 m³/h)
 - Very good (10 - 20 m³/h)
 - Good (8 - 15 m³/h)
 - Fair A (5 - 10 m³/h)
 - Fair B (3 - 7 m³/h)
 - Fair C (2 - 4 m³/h)
 - Poor (1 - 3 m³/h)
 - Very poor (0.5 - 1.5 m³/h)
 - Undevelopable
 - Lake, Swamp
- Geological Unit**
- Cenozoic Sediment
 - Volcanic Rock
 - Pyroclastic Sediment
 - Granite
 - Bukoban
 - Usagaran
 - Nyanzian
 - Dodoman
 - Mbuga Clay
 - Sub Basin
 - Major Fault
 - Groundwater Flow
 - Static Water Level (m)
 - Fluoride (mg/l)
 - District

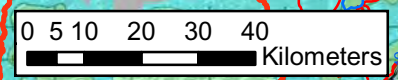
**G-10 Hydrogeological Map
(Fluoride, in D and H Basin)**

The Study on the Groundwater Resources Development and Management in the Internal Drainage Basin in the United Republic of Tanzania

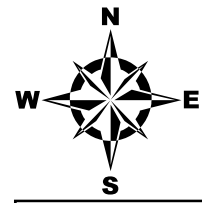
Japan International Cooperation Agency
Internal Drainage Basin Water Office, Ministry of Water
OYO International Corporation
Kokusai Kogyo Co.,Ltd



2008.1



Coordinate System: Geographic, Arc 1960 (Spheroid: Clarke 1880)



Legend

Productivity

(m³/h)

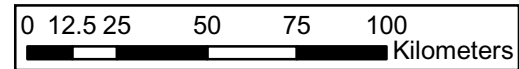
- > 20
- 10 - 20
- 8 - 15
- 5 - 10
- 3 - 7
- 2 - 4
- 1 - 3
- 0.5 - 1.5

- Undevelopable
- Lake, Swamp

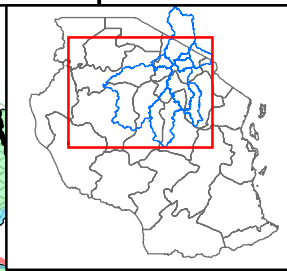
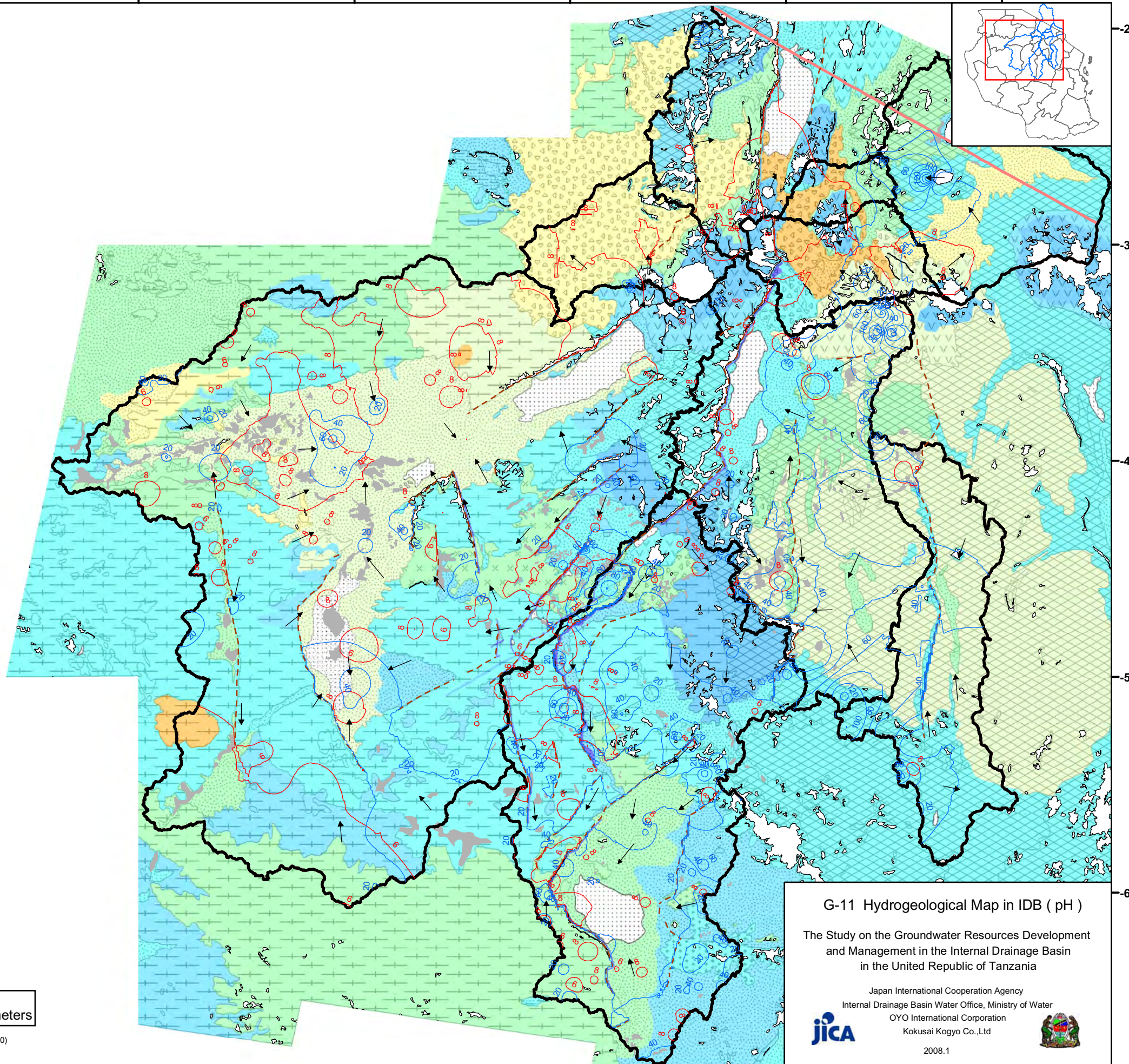
Geological Unit

- Cenozoic Sediment
- Volcanic Rock
- Pyroclastic Sediment
- Granite
- Bukoban
- Usagaran
- Nyanzian
- Dodoman
- Mbuga Clay

- Sub Basin
- Major Fault
- Groundwater Flow
- Static Water Level (m)
- pH



Coordinate System: Geographic, Arc 1960 (Spheroid: Clarke 1880)



G-11 Hydrogeological Map in IDB (pH)

The Study on the Groundwater Resources Development and Management in the Internal Drainage Basin in the United Republic of Tanzania

Japan International Cooperation Agency
Internal Drainage Basin Water Office, Ministry of Water
OYO International Corporation
Kokusai Kogyo Co., Ltd



2008.1