

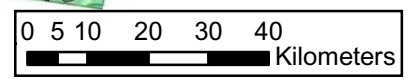
Legend

Productivity

- Excellent (over 20 m³/h)
- Very good (10 - 20 m³/h)
- Good (8 - 15 m³/h)
- Fair A (5 - 10 m³/h)
- Fair B (3 - 7 m³/h)
- Fair C (2 - 4 m³/h)
- Poor (1 - 3 m³/h)
- Very poor (0.5 - 1.5 m³/h)
- Undevelopable
- Lake, Swamp

Geological Unit

- Cenozoic Sediment
- Volcanic Rock
- Pyroclastic Sediment
- Granite
- Bukoban
- Usagaran
- Nyanzian
- Dodoman
- Mbuga Clay
- Sub Basin
- Major Faults
- Groundwater Flow
- Static Water Level (m)
- EC (mS/m)
- District



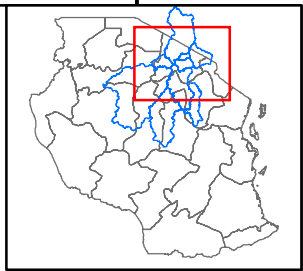
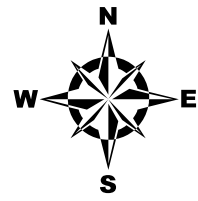
Coordinate System: Geographic, Arc 1960 (Spheroid:Clarke 1880)

G-3 Hydrogeological Map (G Basin)

The Study on the Groundwater Resources Development and Management in the Internal Drainage Basin in the United Republic of Tanzania

Japan International Cooperation Agency
Internal Drainage Basin Water Office, Ministry of Water
OYO International Corporation
Kokusai Kogyo Co.,Ltd

2008.1



Legend

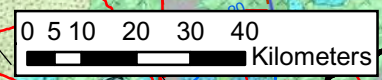
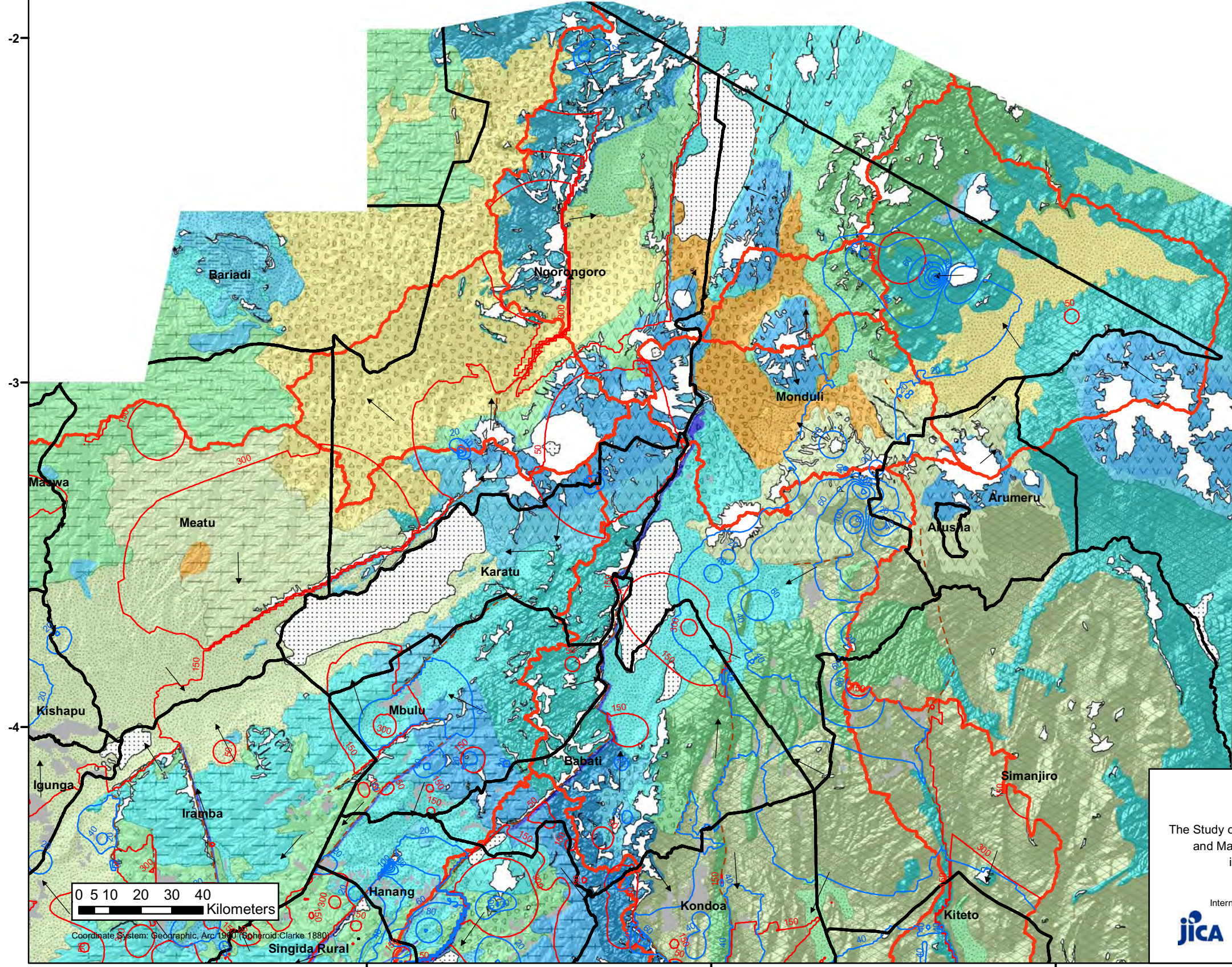
Productivity

- Excellent (over 20 m³/h)
- Very good (10 - 20 m³/h)
- Good (8 - 15 m³/h)
- Fair A (5 - 10 m³/h)
- Fair B (3 - 7 m³/h)
- Fair C (2 - 4 m³/h)
- Poor (1 - 3 m³/h)
- Very poor (0.5 - 1.5 m³/h)

Undevelopable
Lake, Swamp

Geological Unit

- Cenozoic Sediment
- Volcanic Rock
- Pyroclastic Sediment
- Granite
- Bukoban
- Usagaran
- Nyanzian
- Dodoman
- Mbuga Clay
- Sub Basin
- Major Faults
- Groundwater Flow
- Static Water Level (m)
- EC (mS/m)
- District



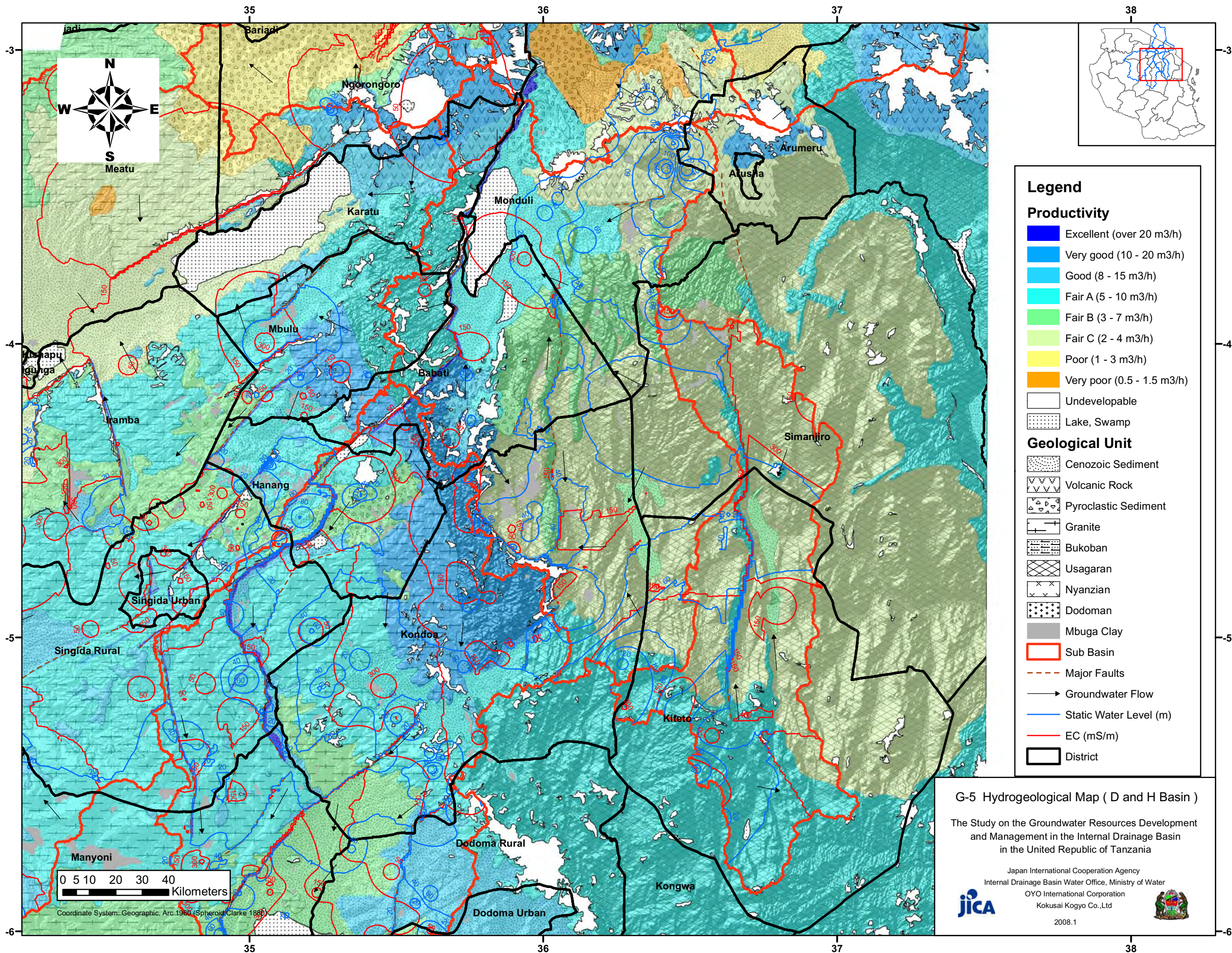
Coordinate System: Geographic, Arc 1960 (Spheroid: Clarke 1880)

G-4 Hydrogeological Map
(B, C, E, F and I Basin)

The Study on the Groundwater Resources Development and Management in the Internal Drainage Basin in the United Republic of Tanzania

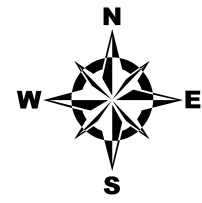
Japan International Cooperation Agency
Internal Drainage Basin Water Office, Ministry of Water
OYO International Corporation
Kokusai Kogyo Co.,Ltd

2008.1



0 5 10 20 30 40
Kilometers

Coordinate System: Geographic, Arc 1960 (Spheroid: Clarke 1880)



Legend

Productivity

- Excellent (over 20 m³/h)
- Very good (10 - 20 m³/h)
- Good (8 - 15 m³/h)
- Fair A (5 - 10 m³/h)
- Fair B (3 - 7 m³/h)
- Fair C (2 - 4 m³/h)
- Poor (1 - 3 m³/h)
- Very poor (0.5 - 1.5 m³/h)

- Undevelopable

- Lake, Swamp

Geological Unit

- Cenozoic Sediment
- Volcanic Rock
- Pyroclastic Sediment
- Granite
- Bukoban
- Usagaran
- Nyanzian
- Dodoman
- Mbuga Clay

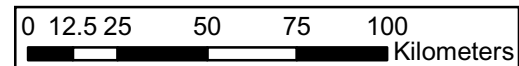
- Sub Basin

- Major Faults

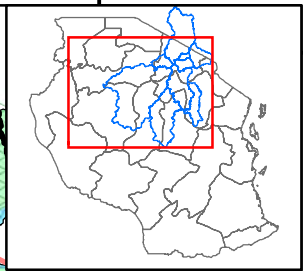
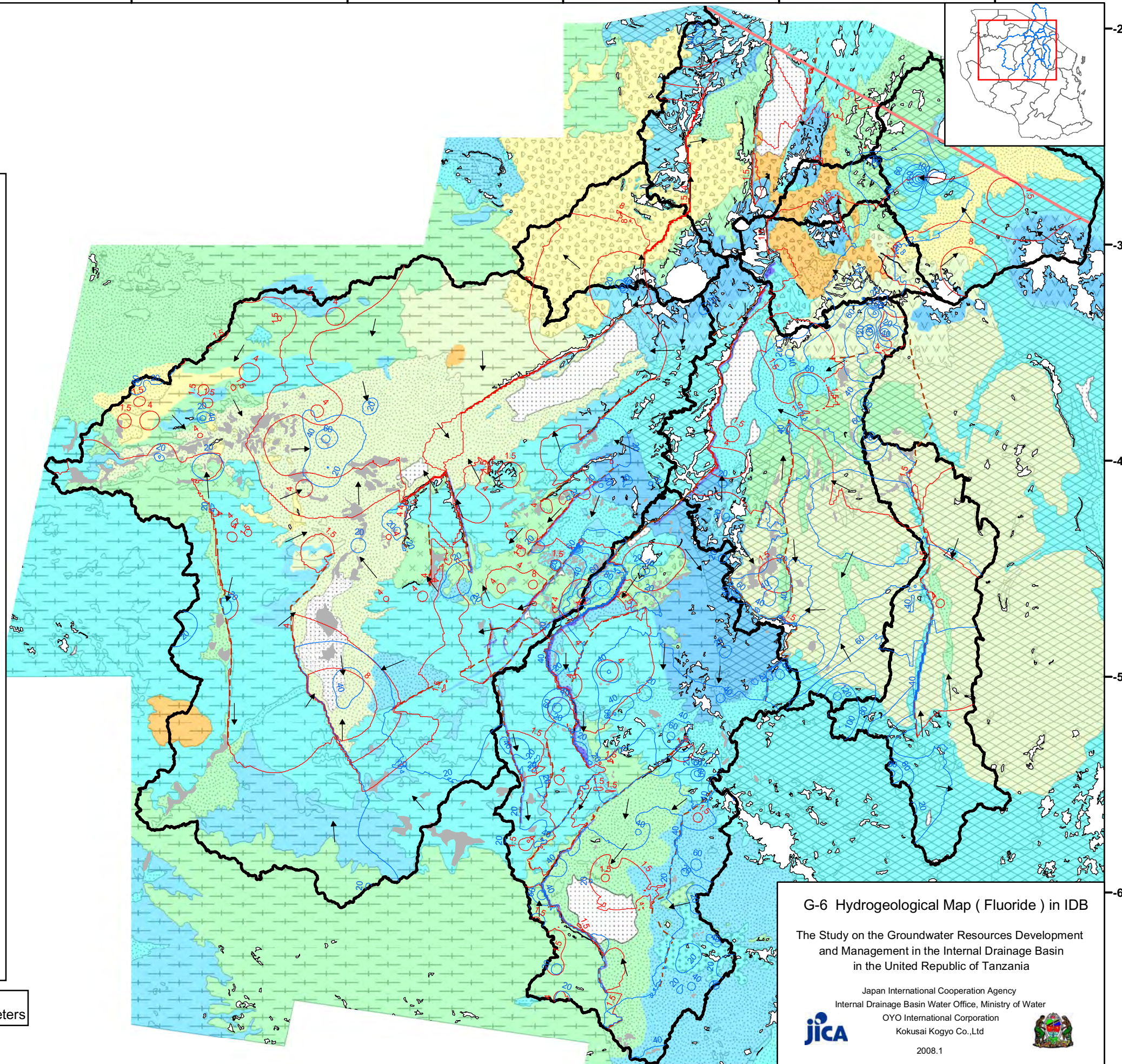
- Groundwater Flow

- Static Water Level (m)

- Fluoride (mg/l)



Coordinate System: Geographic, Arc 1960 (Spheroid: Clarke 1880)



G-6 Hydrogeological Map (Fluoride) in IDB
The Study on the Groundwater Resources Development and Management in the Internal Drainage Basin in the United Republic of Tanzania

Japan International Cooperation Agency
Internal Drainage Basin Water Office, Ministry of Water
OYO International Corporation
Kokusai Kogyo Co., Ltd



2008.1