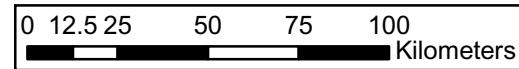


**Legend**

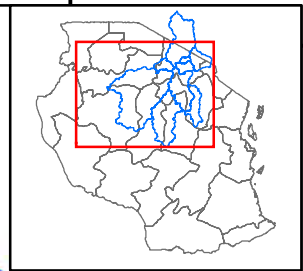
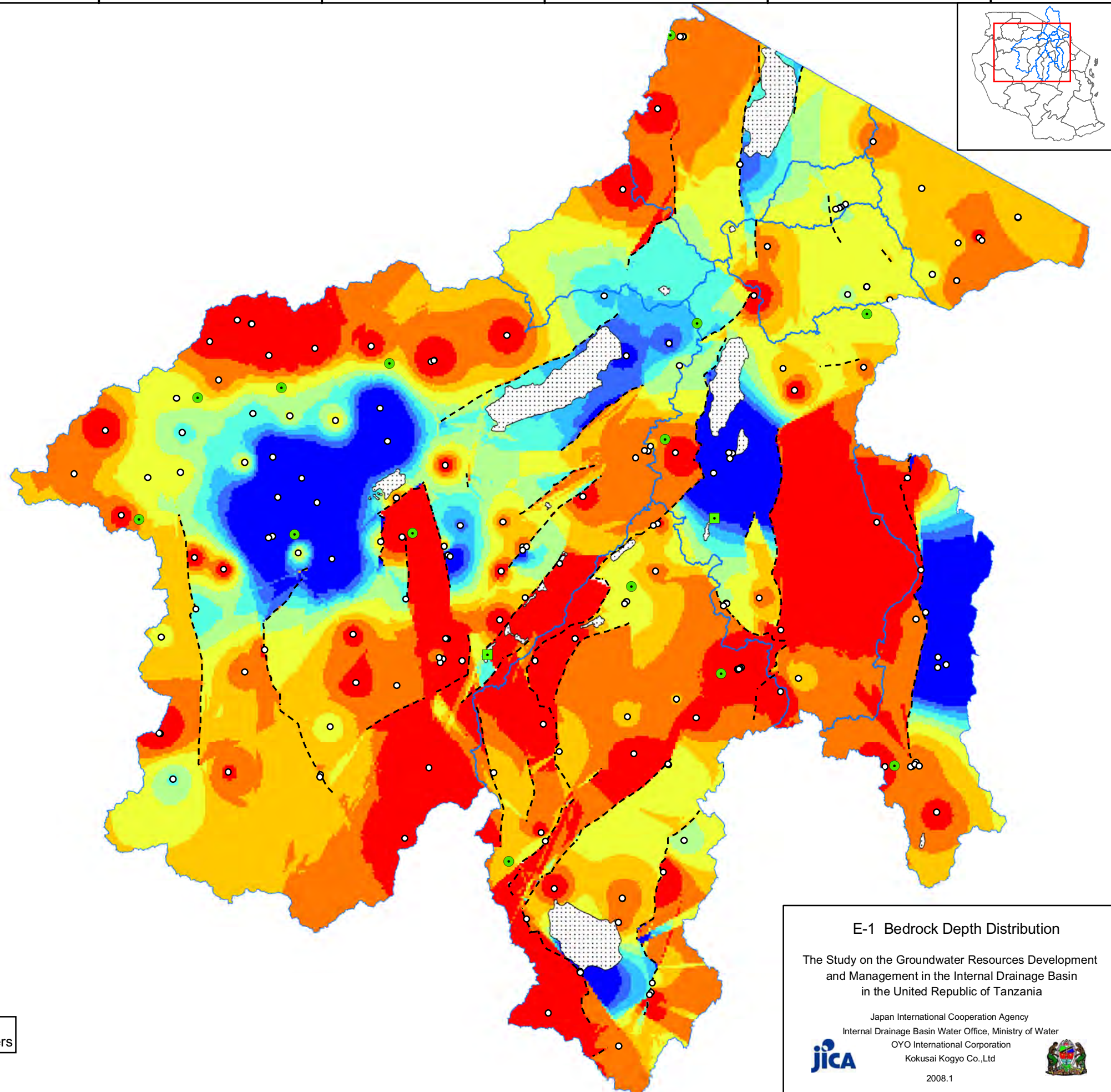
- Region Capital
- District Capital
- Geophysical Survey Point
- - - Major Fault
- Lake
- Sub Basin

**Bedrock Depth (m)**

- - 20
- 20 - 30
- 30 - 40
- 40 - 60
- 60 - 80
- 80 - 100
- 100 - 120
- 120 - 140
- 140 -



Coordinate System: Geographic, Arc 1960 (Spheroid:Clarke 1880)



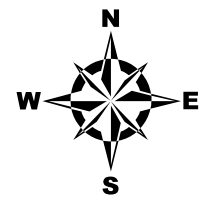
**E-1 Bedrock Depth Distribution**

The Study on the Groundwater Resources Development and Management in the Internal Drainage Basin in the United Republic of Tanzania

Japan International Cooperation Agency  
Internal Drainage Basin Water Office, Ministry of Water  
OYO International Corporation  
Kokusai Kogyo Co., Ltd



2008.1

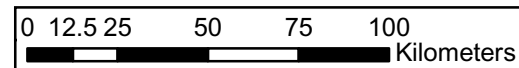


**Legend**

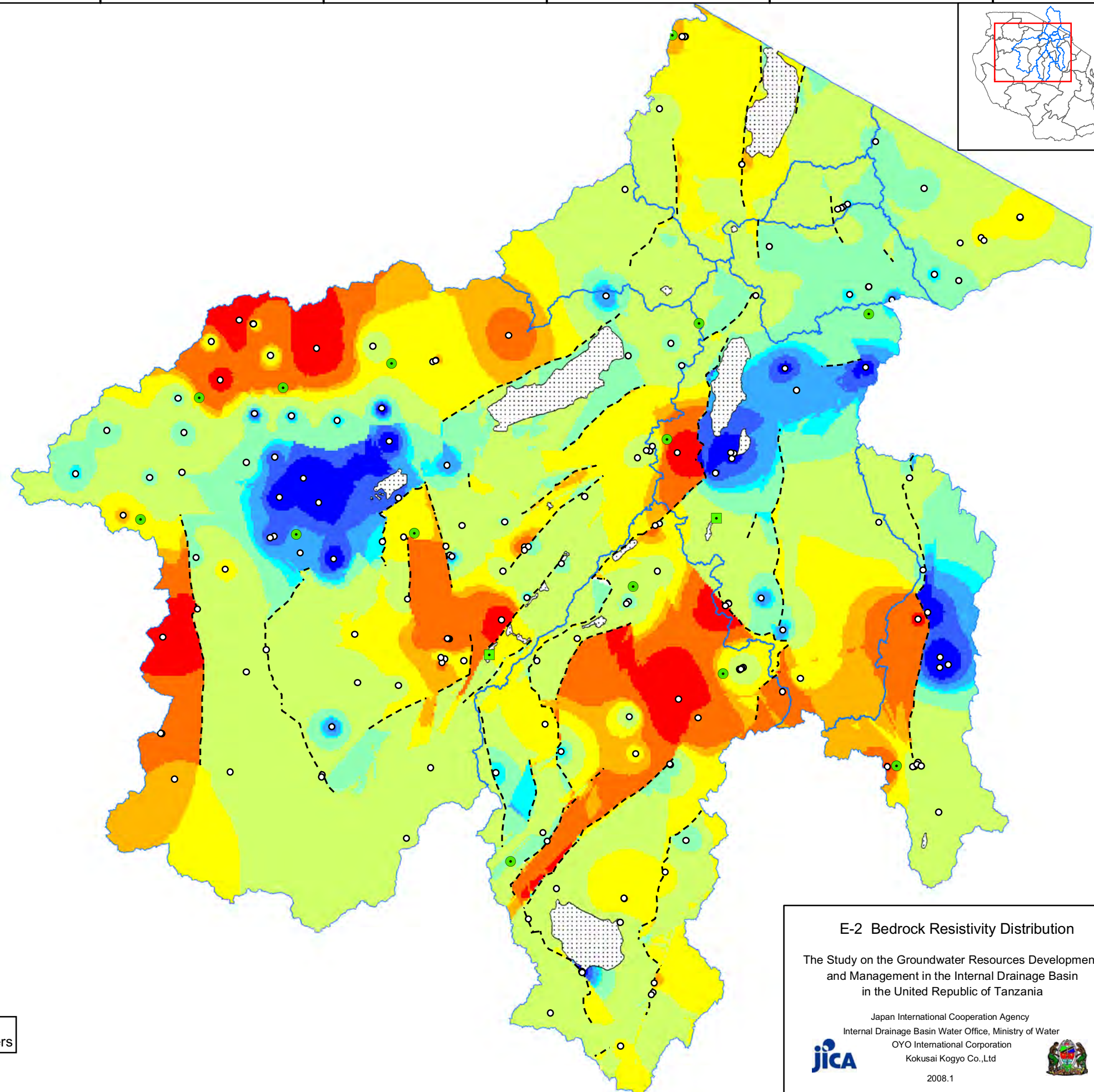
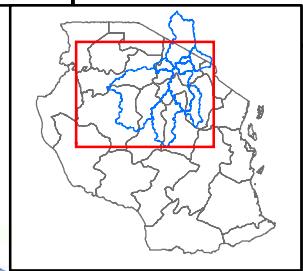
- Region Capital
- District Capital
- Geophysical Survey Point
- Major Fault
- Lake
- Sub Basin

**Bedrock Resistivity  
(Ohm-m)**

- 30
- 30 - 50
- 50 - 80
- 80 - 100
- 100 - 200
- 200 - 500
- 500 - 800
- 800 - 1,000
- 1,000 - 2,000
- 2,000 -



Coordinate System: Geographic, Arc 1960 (Spheroid:Clarke 1880)



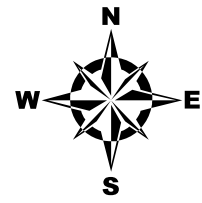
**E-2 Bedrock Resistivity Distribution**

The Study on the Groundwater Resources Development and Management in the Internal Drainage Basin in the United Republic of Tanzania

Japan International Cooperation Agency  
Internal Drainage Basin Water Office, Ministry of Water  
OYO International Corporation  
Kokusai Kogyo Co., Ltd



2008.1

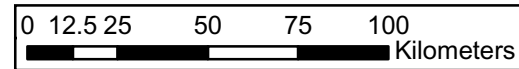


### Legend

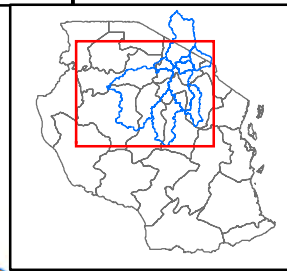
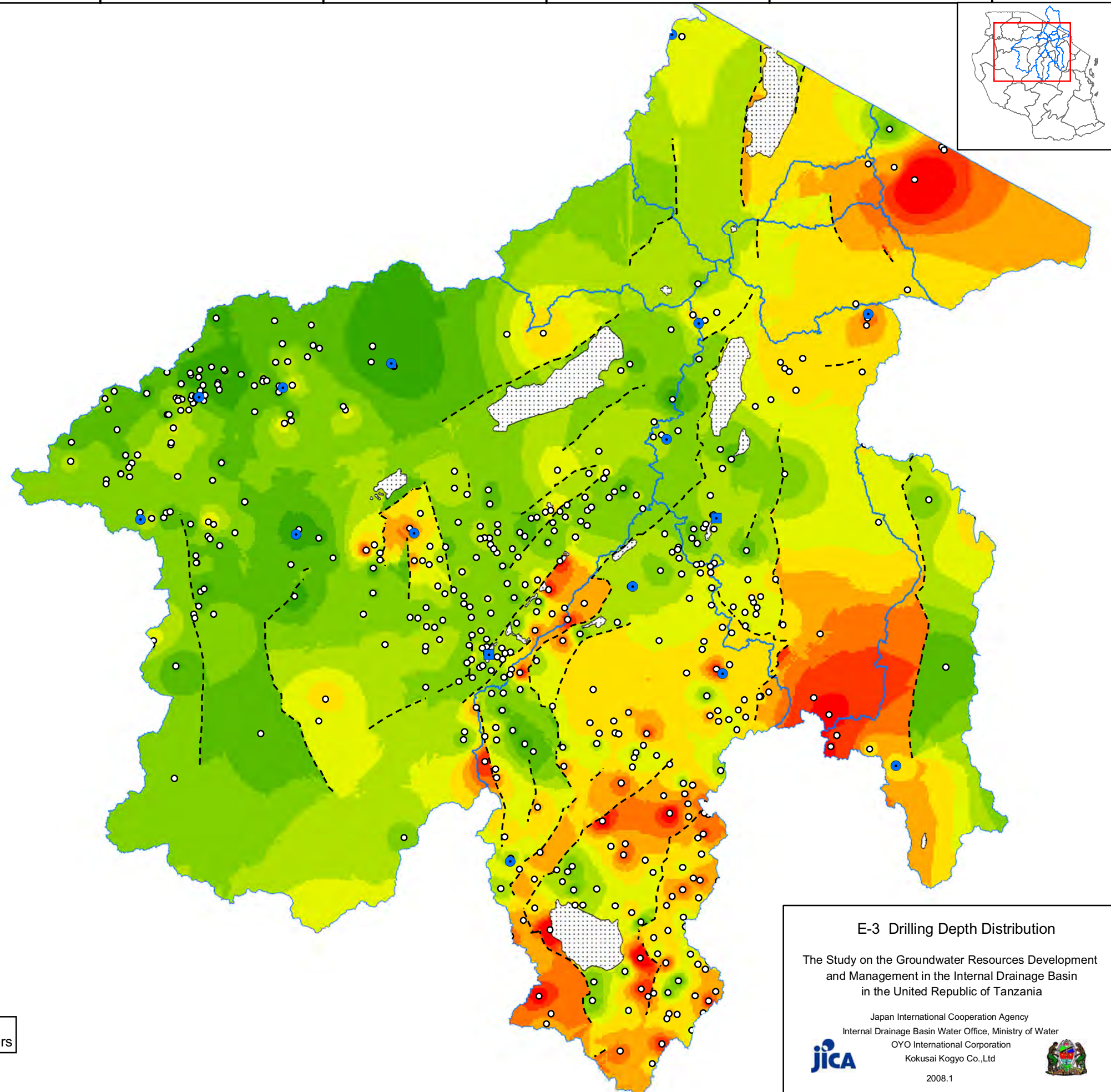
- Region Capital
- District Capital
- Borehole Location
- Major Fault
- Lake
- Sub Basin

### Drilling Depth (m)

- 20
- 20 - 40
- 40 - 60
- 60 - 80
- 80 - 100
- 100 - 120
- 120 - 140
- 140 - 160
- 160 - 180
- 180 -



Coordinate System: Geographic, Arc 1960 (Spheroid: Clarke 1880)

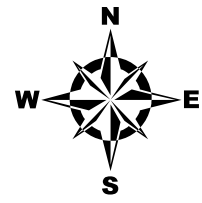


**E-3 Drilling Depth Distribution**







The Study on the Groundwater Resources Development and Management in the Internal Drainage Basin in the United Republic of Tanzania

Japan International Cooperation Agency  
Internal Drainage Basin Water Office, Ministry of Water  
OYO International Corporation  
Kokusai Kogyo Co., Ltd

2008.1

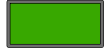












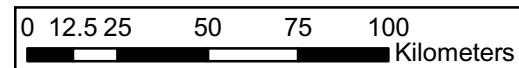
### Legend

-  Region Capital
-  District Capital
-  Well Location
-  Major Fault
-  Lake
-  Sub Basin

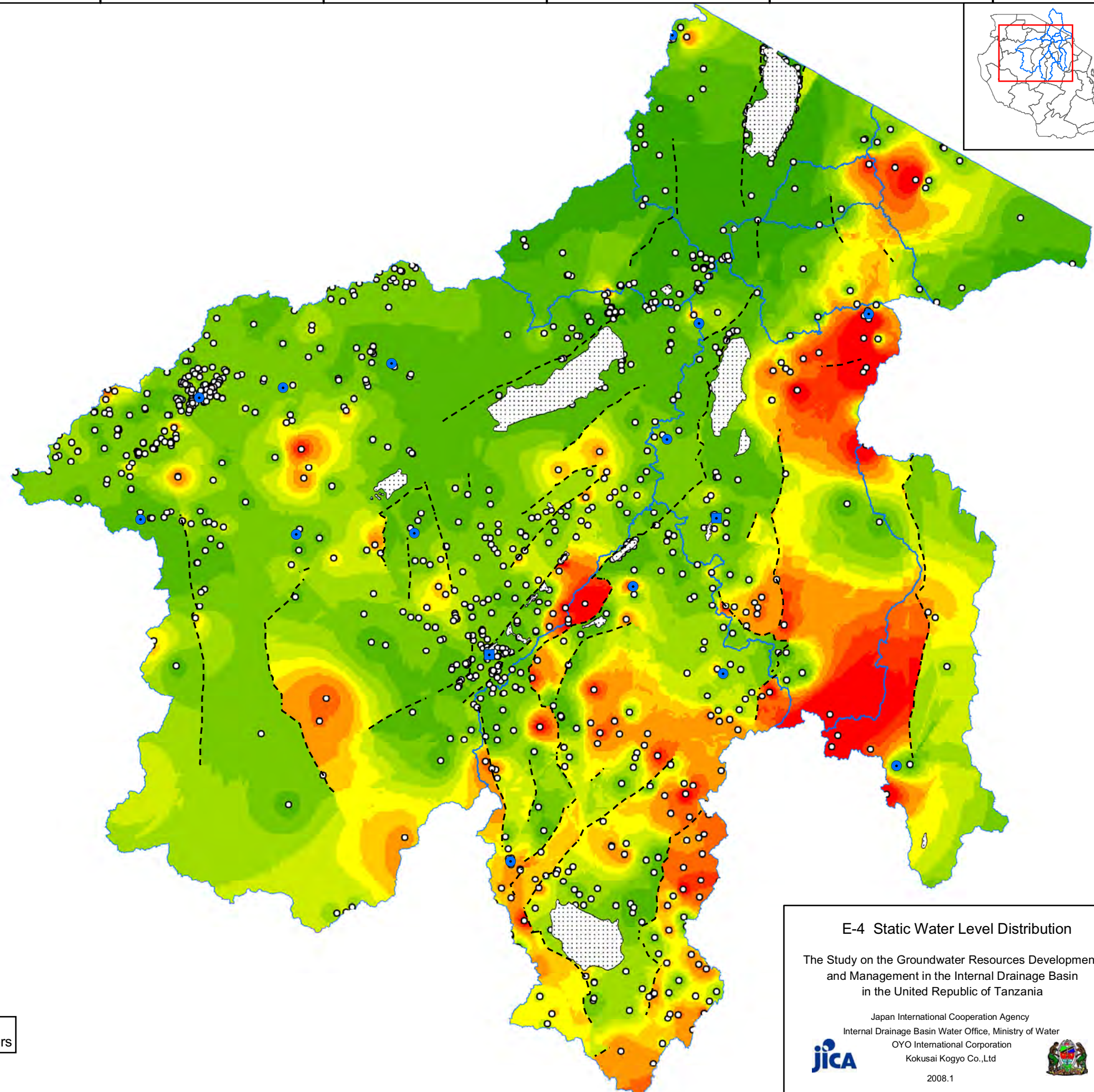
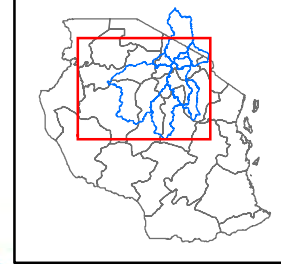
### Static Water Level

(m)

-  - 0
-  0 - 5
-  5 - 10
-  10 - 15
-  15 - 20
-  20 - 25
-  25 - 30
-  30 - 40
-  40 - 50
-  50 - 60
-  60 -



Coordinate System: Geographic, Arc 1960 (Spheroid: Clarke 1880)



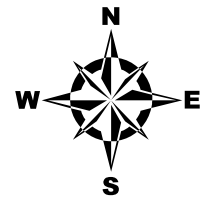
### E-4 Static Water Level Distribution

The Study on the Groundwater Resources Development and Management in the Internal Drainage Basin in the United Republic of Tanzania

Japan International Cooperation Agency  
Internal Drainage Basin Water Office, Ministry of Water  
OYO International Corporation  
Kokusai Kogyo Co., Ltd



2008.1



### Legend

- Region Capital
- District Capital
- Borehole Location

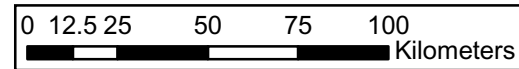
----- Major Fault

Lake

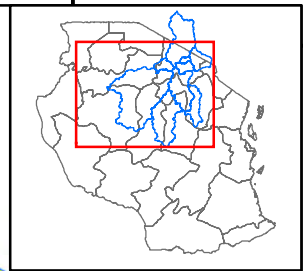
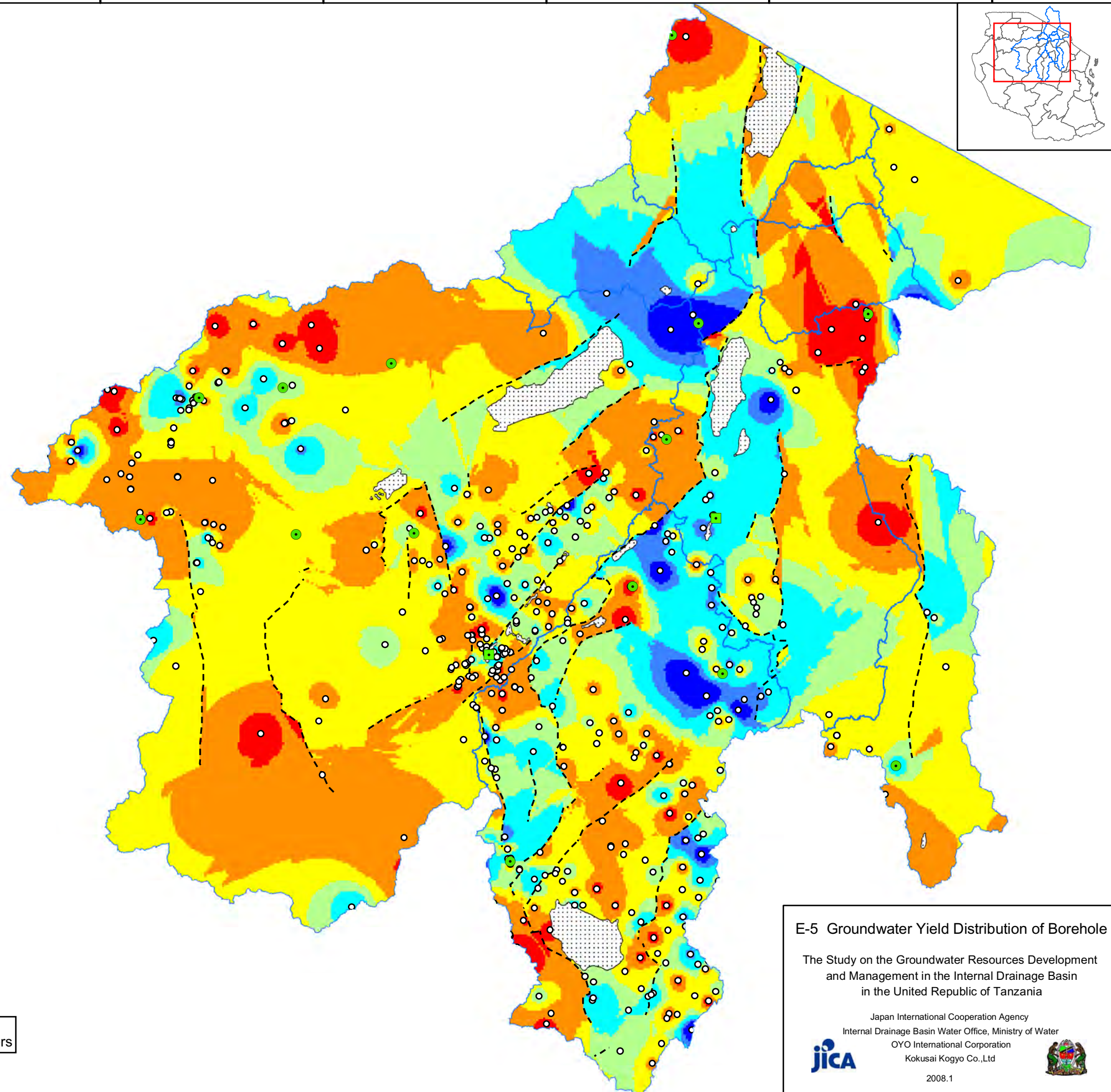
Sub Basin

#### Yield (m<sup>3</sup>/h)

- - 2.5
- 2.5 - 5
- 5.0 - 7.5
- 7.5 - 10
- 10 - 15
- 15 - 20
- 20 -



Coordinate System: Geographic, Arc 1960 (Spheroid: Clarke 1880)



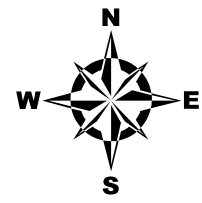
### E-5 Groundwater Yield Distribution of Borehole

The Study on the Groundwater Resources Development and Management in the Internal Drainage Basin in the United Republic of Tanzania

Japan International Cooperation Agency  
Internal Drainage Basin Water Office, Ministry of Water  
OYO International Corporation  
Kokusai Kogyo Co., Ltd



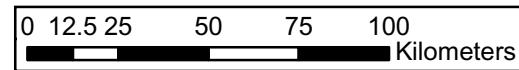
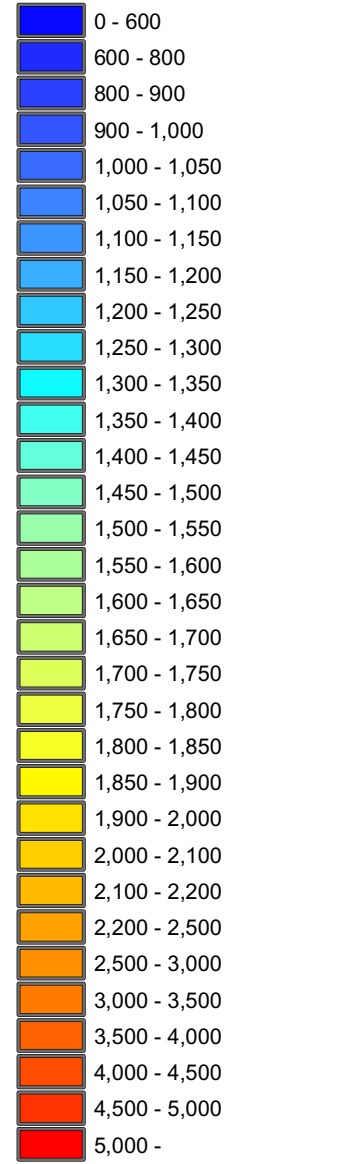
2008.1



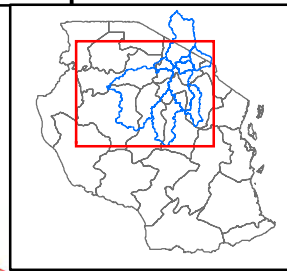
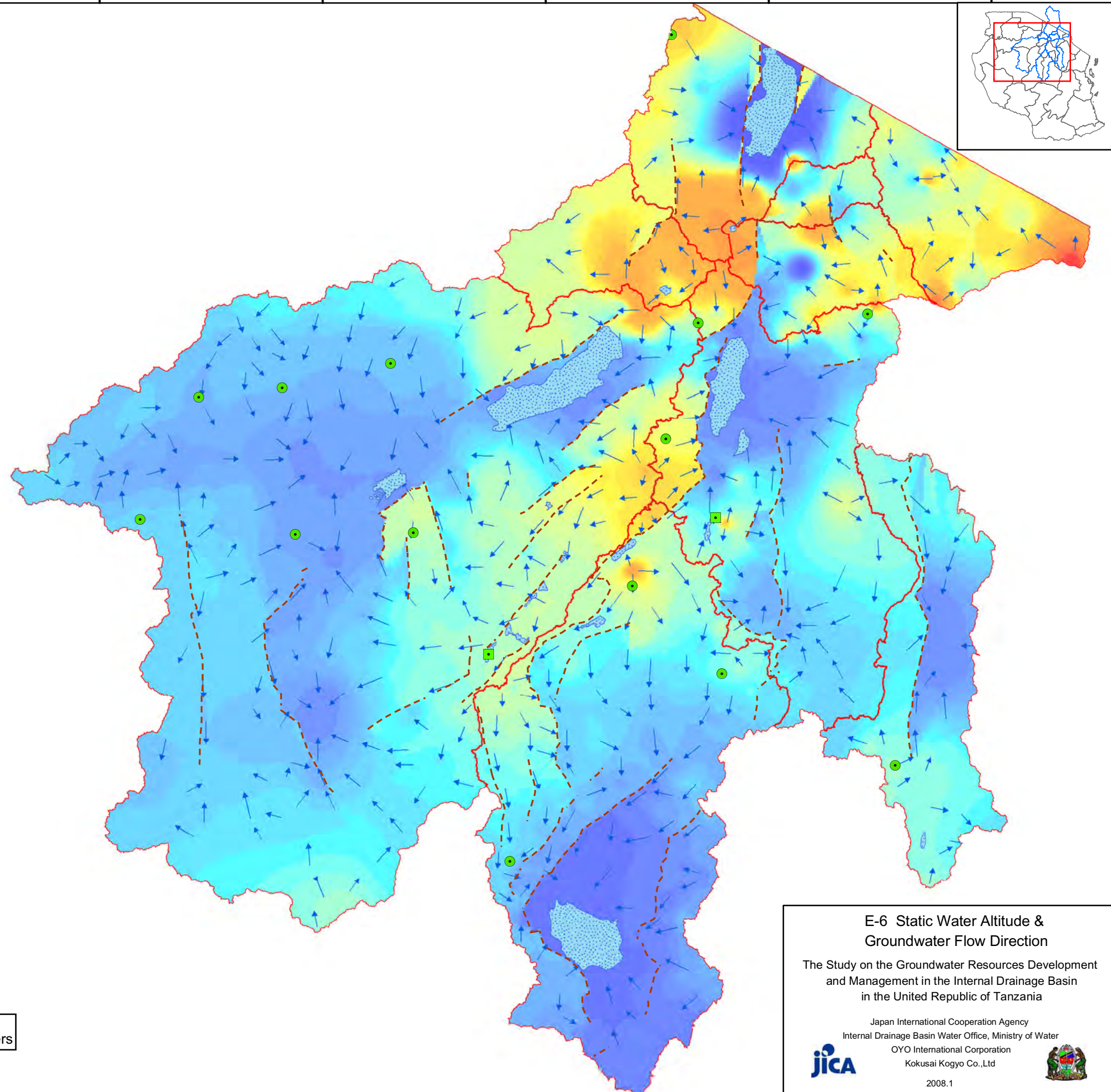
**Legend**

- Region Capital
- District Capital
- - - Major Fault
- Lake
- Groundwater Flow
- Sub Basin

**Static Water Altitude (m)**



Coordinate System: Geographic, Arc 1960 (Spheroid: Clarke 1880)



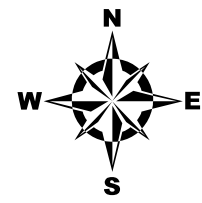
**E-6 Static Water Altitude & Groundwater Flow Direction**

The Study on the Groundwater Resources Development and Management in the Internal Drainage Basin in the United Republic of Tanzania

Japan International Cooperation Agency  
Internal Drainage Basin Water Office, Ministry of Water  
OYO International Corporation  
Kokusai Kogyo Co., Ltd



2008.1

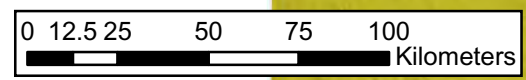


### Legend

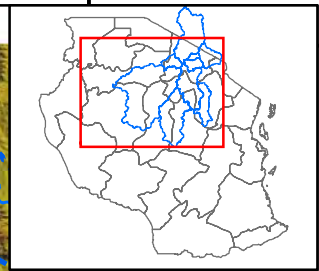
- Region Capital
- District Capital
- - - Major Fault
- River
- Lake
- ⋯ Sub Basin

### Sampling Point

- Fluoride (mg/l)
- 0.0 - 1.5
  - 1.5 - 4.0
  - 4.0 - 8.0
  - 8.0 -



Coordinate System: Geographic, Arc 1960 (Spheroid: Clarke 1880)

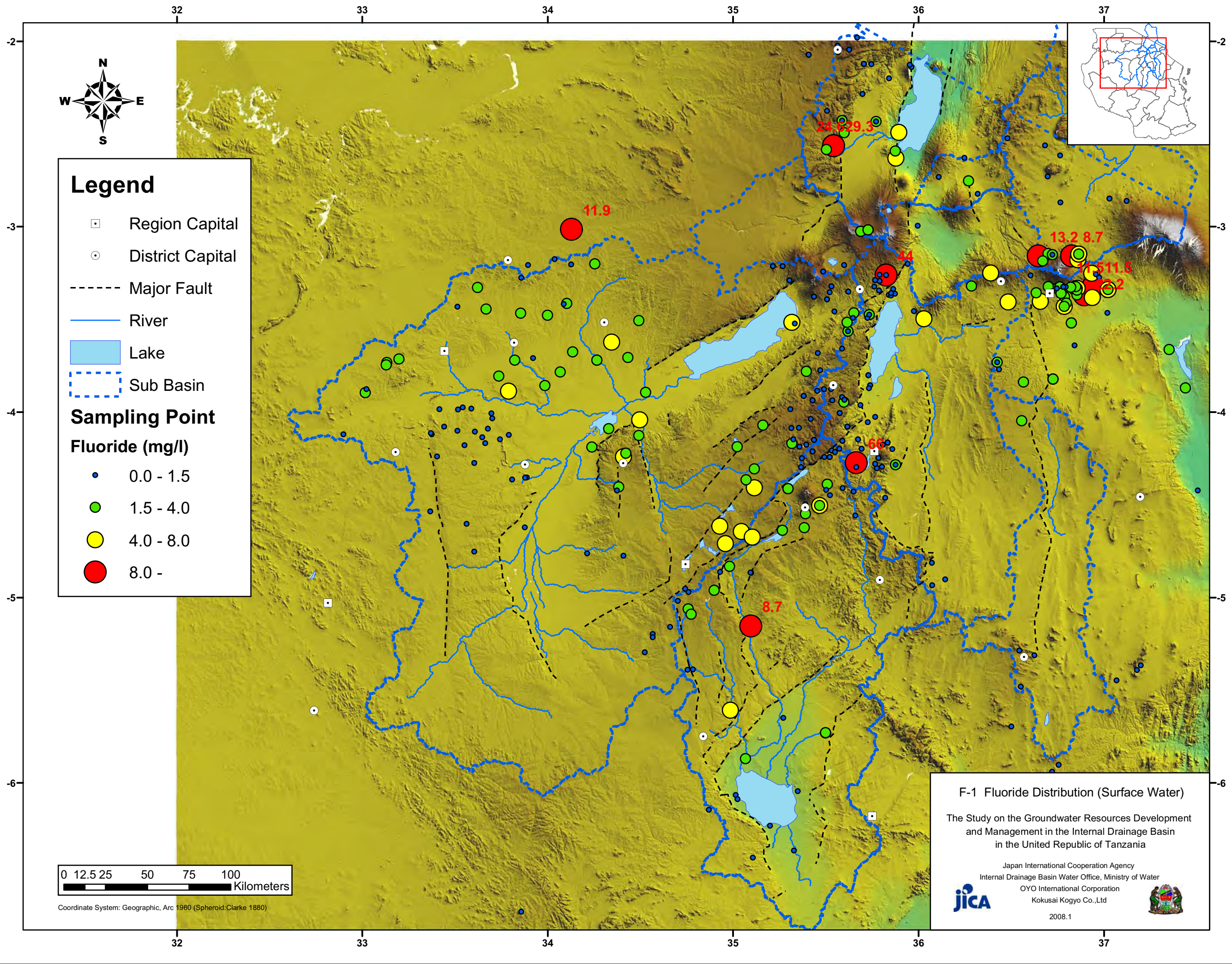


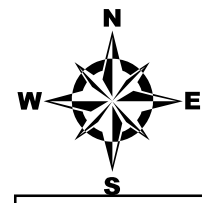
**F-1 Fluoride Distribution (Surface Water)**

The Study on the Groundwater Resources Development and Management in the Internal Drainage Basin in the United Republic of Tanzania

Japan International Cooperation Agency  
Internal Drainage Basin Water Office, Ministry of Water  
OYO International Corporation  
Kokusai Kogyo Co., Ltd

2008.1





### Legend

- Region Capital
- District Capital
- Major Fault
- Lake
- Sub Basin

### Sampling Point (mg/l)

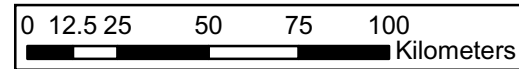
- 0.0 - 1.5
- 1.5 - 4.0
- 4.0 - 8.0
- 8.0 -

### Fluoride Contour (mg/l)

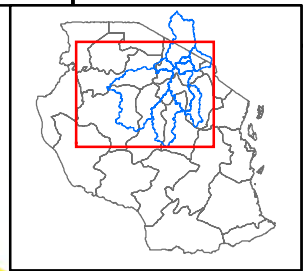
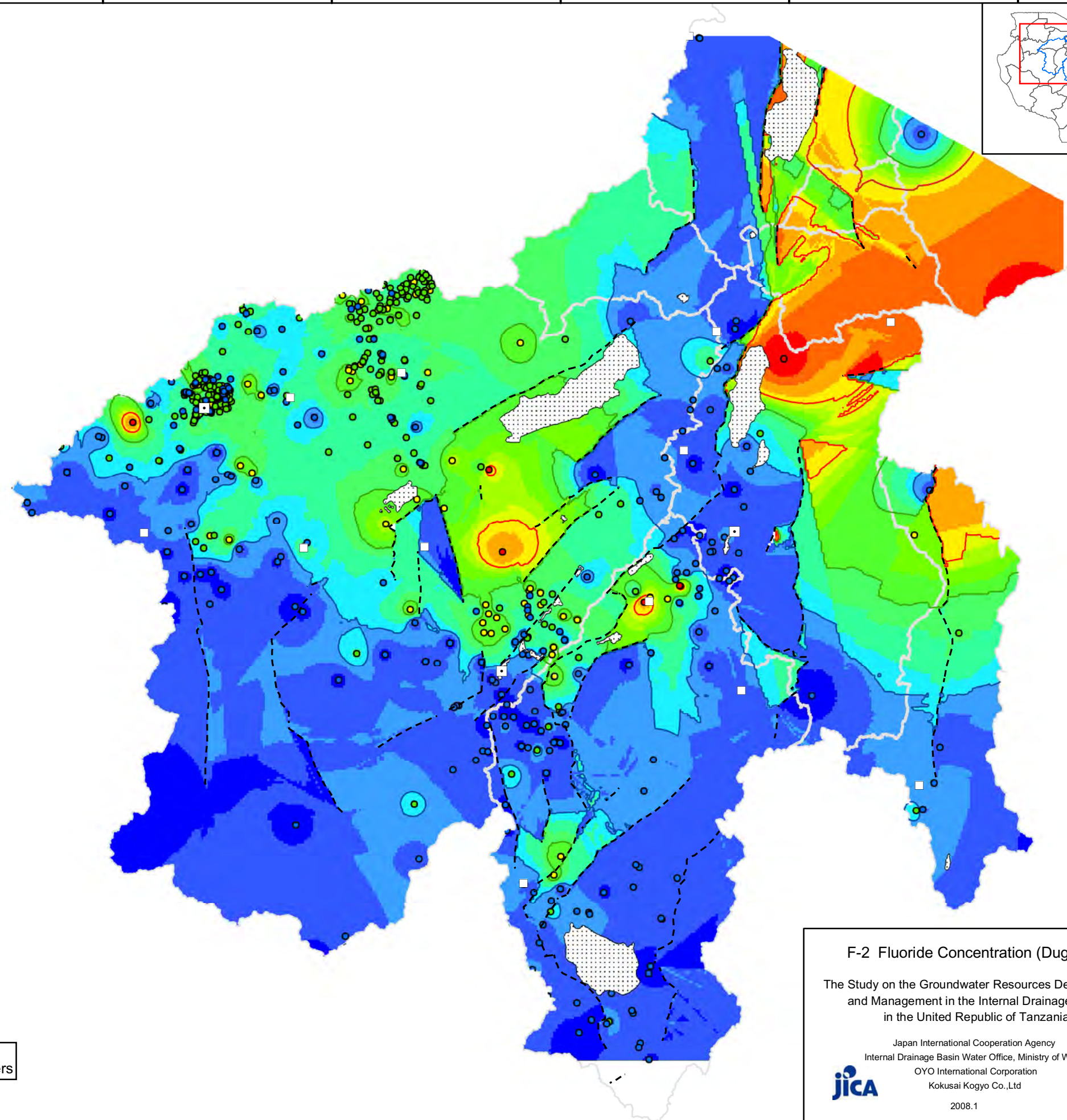
- 1.5
- 4.0
- 8.0

### Fluoride (mg/l)

- 0.0 - 0.5
- 0.5 - 1.0
- 1.0 - 1.5
- 1.5 - 2.0
- 2.0 - 3.0
- 3.0 - 4.0
- 4.0 - 5.0
- 5.0 - 6.0
- 6.0 - 7.0
- 7.0 - 8.0
- 8.0 - 10.0
- 10.0 - 15.0
- 15.0 - 20.0
- 20.0 -



Coordinate System: Geographic, Arc 1960 (Spheroid:Clarke 1880)



### F-2 Fluoride Concentration (Dug well )

The Study on the Groundwater Resources Development and Management in the Internal Drainage Basin in the United Republic of Tanzania

Japan International Cooperation Agency  
Internal Drainage Basin Water Office, Ministry of Water  
OYO International Corporation  
Kokusai Kogyo Co.,Ltd



2008.1