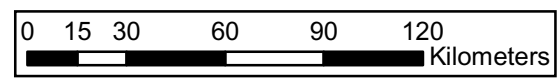


### Legend

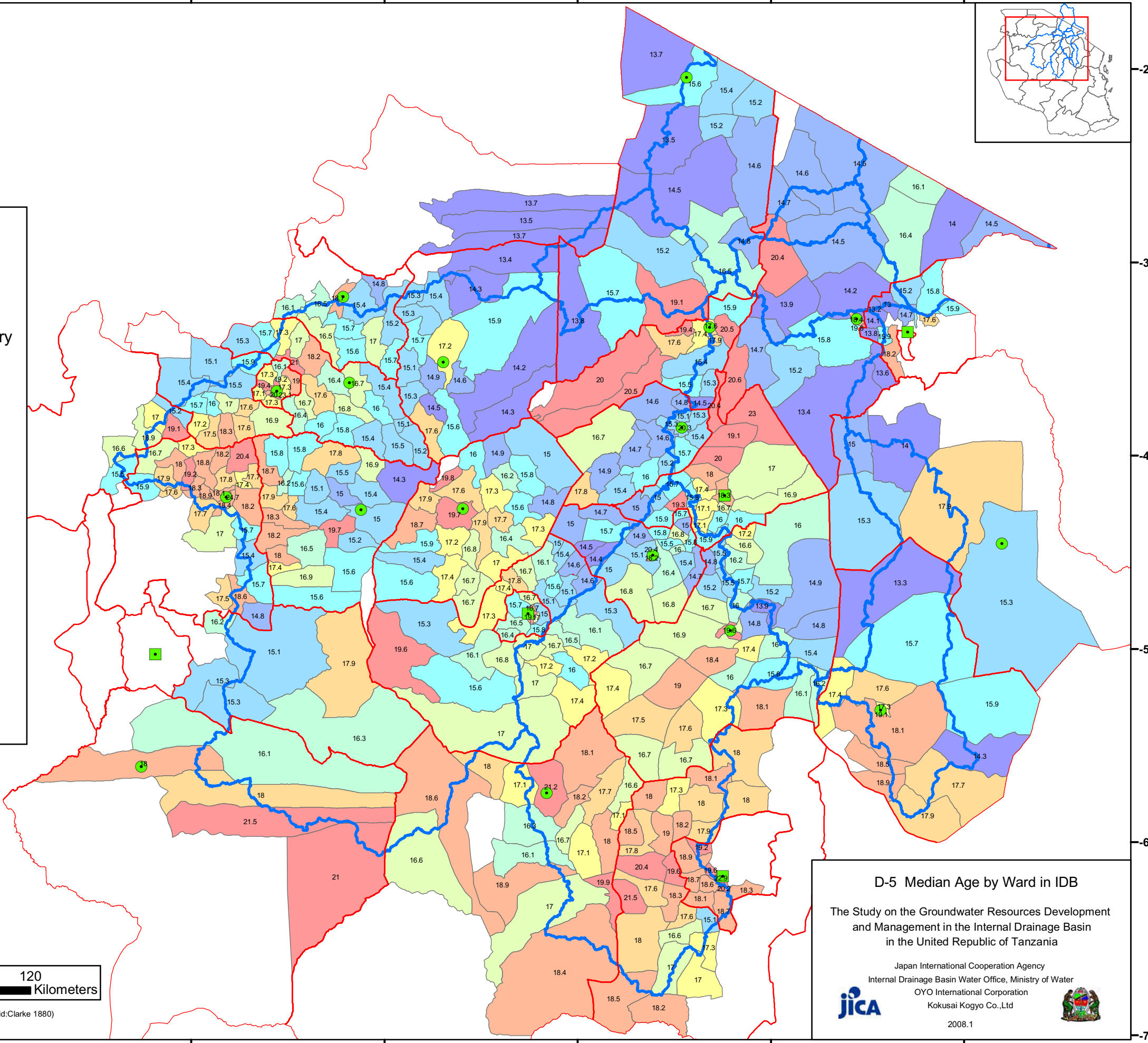
- Region Capital
- District Capital
- District Boundary
- Sub Basin

### Median Age

- 14.5
- 14.5 - 15.0
- 15.0 - 15.5
- 15.5 - 16.0
- 16.0 - 16.5
- 16.5 - 17.0
- 17.0 - 17.5
- 17.5 - 18.0
- 18.0 - 19.0
- 19.0 - 25.0



Coordinate System: Geographic, Arc 1960 (Spheroid: Clarke 1880)

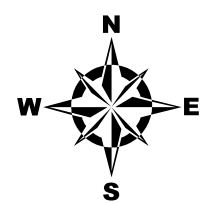
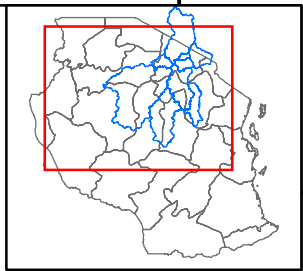


**D-5 Median Age by Ward in IDB**

The Study on the Groundwater Resources Development  
and Management in the Internal Drainage Basin  
in the United Republic of Tanzania

Japan International Cooperation Agency  
Internal Drainage Basin Water Office, Ministry of Water  
OYO International Corporation  
Kokusai Kogyo Co., Ltd

2008.1



**Legend**

- Region Capital
- District Capital
- ▭ Region Boundary
- ▭ District Boundary
- ▭ Sub Basin

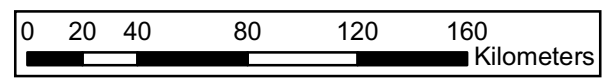
**Life Condition**

- Size of 50 %
- Literate Ratio
- Electric Ratio
- Toilet Ratio

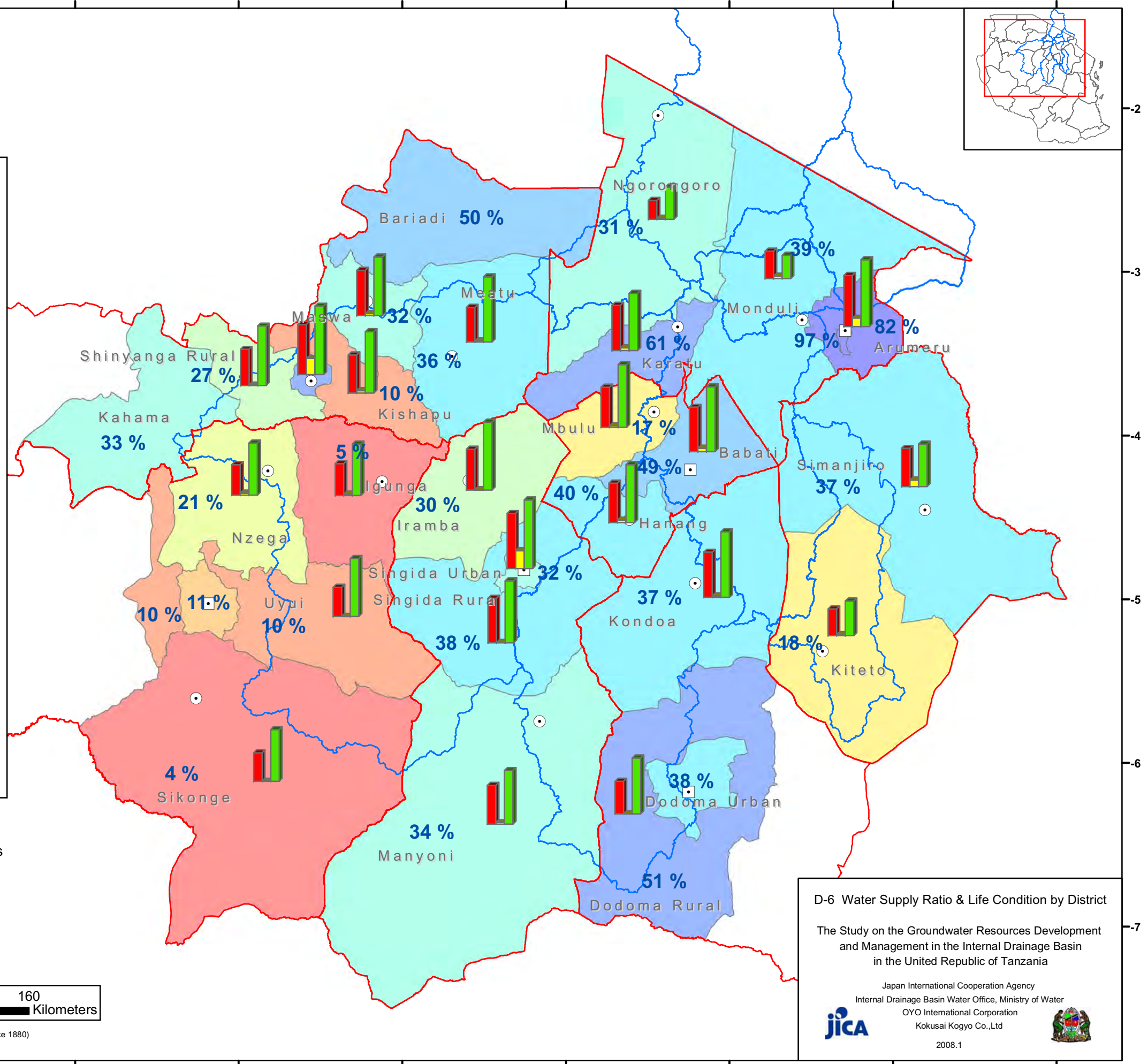
**Water Supply Ratio (%)**

- 4.0 - 5.0
- 5.0 - 10.0
- 10.0 - 15.0
- 15.0 - 20.0
- 20.0 - 25.0
- 25.0 - 30.0
- 30.0 - 35.0
- 35.0 - 40.0
- 40.0 - 50.0
- 50.0 - 75.0
- 75.0 - 100.0

Reference:  
Households with  
access to improved water sources  
(WaterAid, 2005)



Coordinate System: Geographic, Arc 1960 (Spheroid:Clarke 1880)

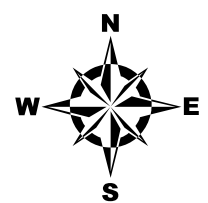
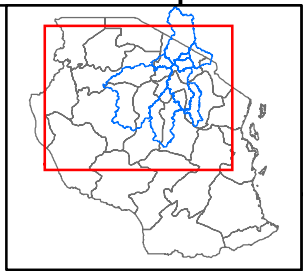


**D-6 Water Supply Ratio & Life Condition by District**

The Study on the Groundwater Resources Development and Management in the Internal Drainage Basin in the United Republic of Tanzania

Japan International Cooperation Agency  
Internal Drainage Basin Water Office, Ministry of Water  
OYO International Corporation  
Kokusai Kogyo Co., Ltd

2008.1



### Legend

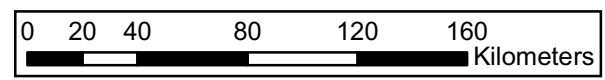
- Region Capital
- District Capital
- Region Boundary
- District Boundary
- Sub Basin

### Irrigation Potential (ha)

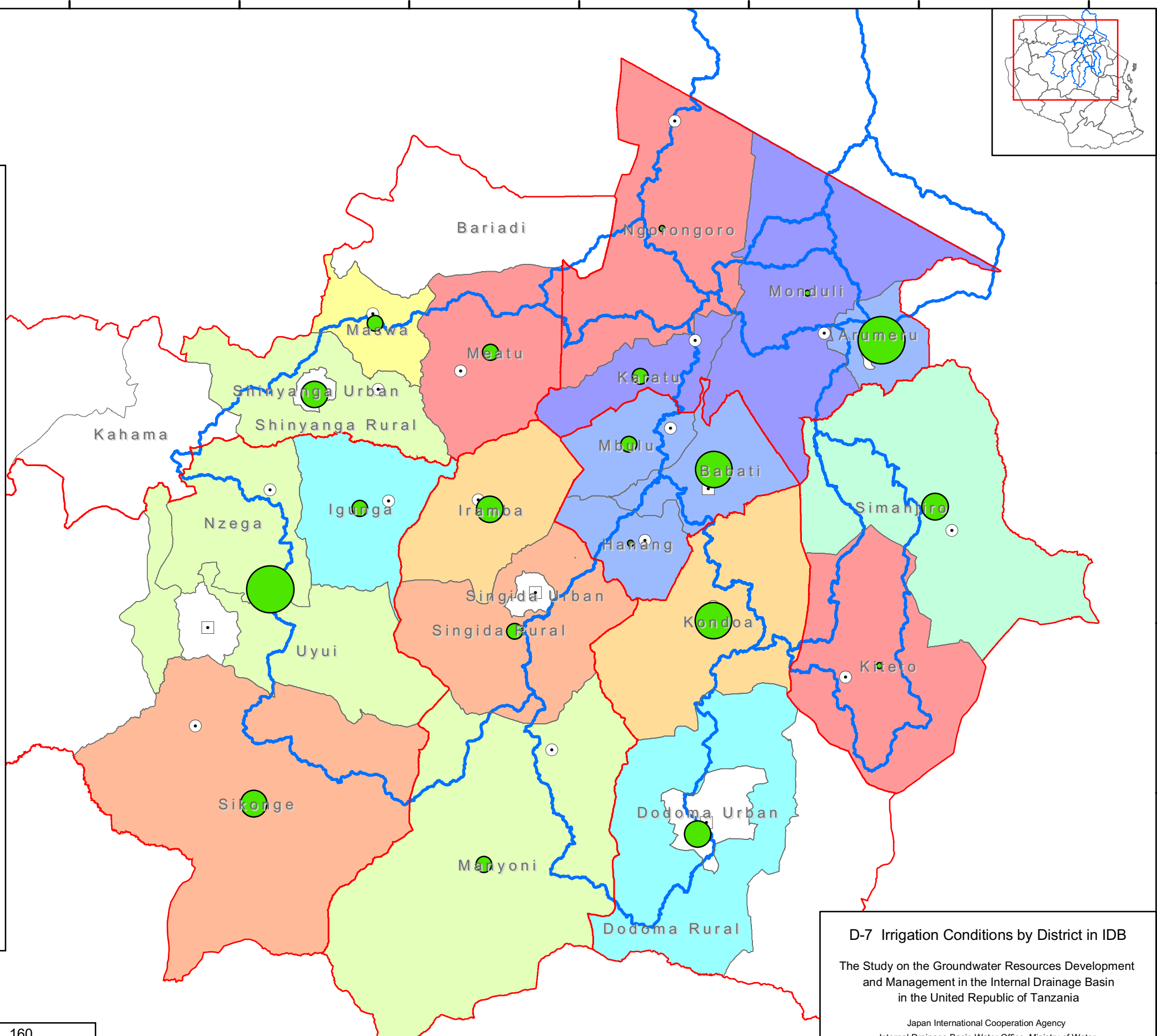
- 0 - 1500
- 1500 - 5000
- 5000 - 10000
- 10000 - 15000
- 15000 - 70000

### Developed Ratio (%)

- 0.0
- 0.0 - 1.5
- 1.5 - 2.0
- 2.0 - 7.5
- 7.5 - 15
- 15.0 - 25.0
- 25.0 - 30.0
- 30.0 - 35.0
- 35.0 - 60.0
- 60.0 - 100.0



Coordinate System: Geographic, Arc 1960 (Spheroid:Clarke 1880)



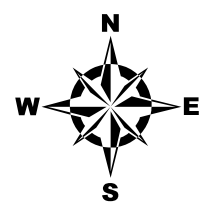
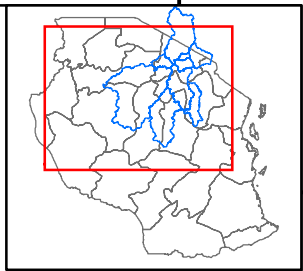
**D-7 Irrigation Conditions by District in IDB**

The Study on the Groundwater Resources Development and Management in the Internal Drainage Basin in the United Republic of Tanzania

Japan International Cooperation Agency  
Internal Drainage Basin Water Office, Ministry of Water  
OYO International Corporation  
Kokusai Kogyo Co.,Ltd

**JICA**

2008.1



**Legend**

- Region Capital
- District Capital
- ▭ Region Boundary
- ▭ District Boundary
- ▭ Sub Basin

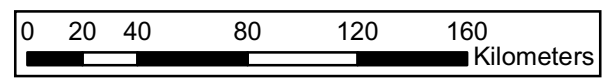
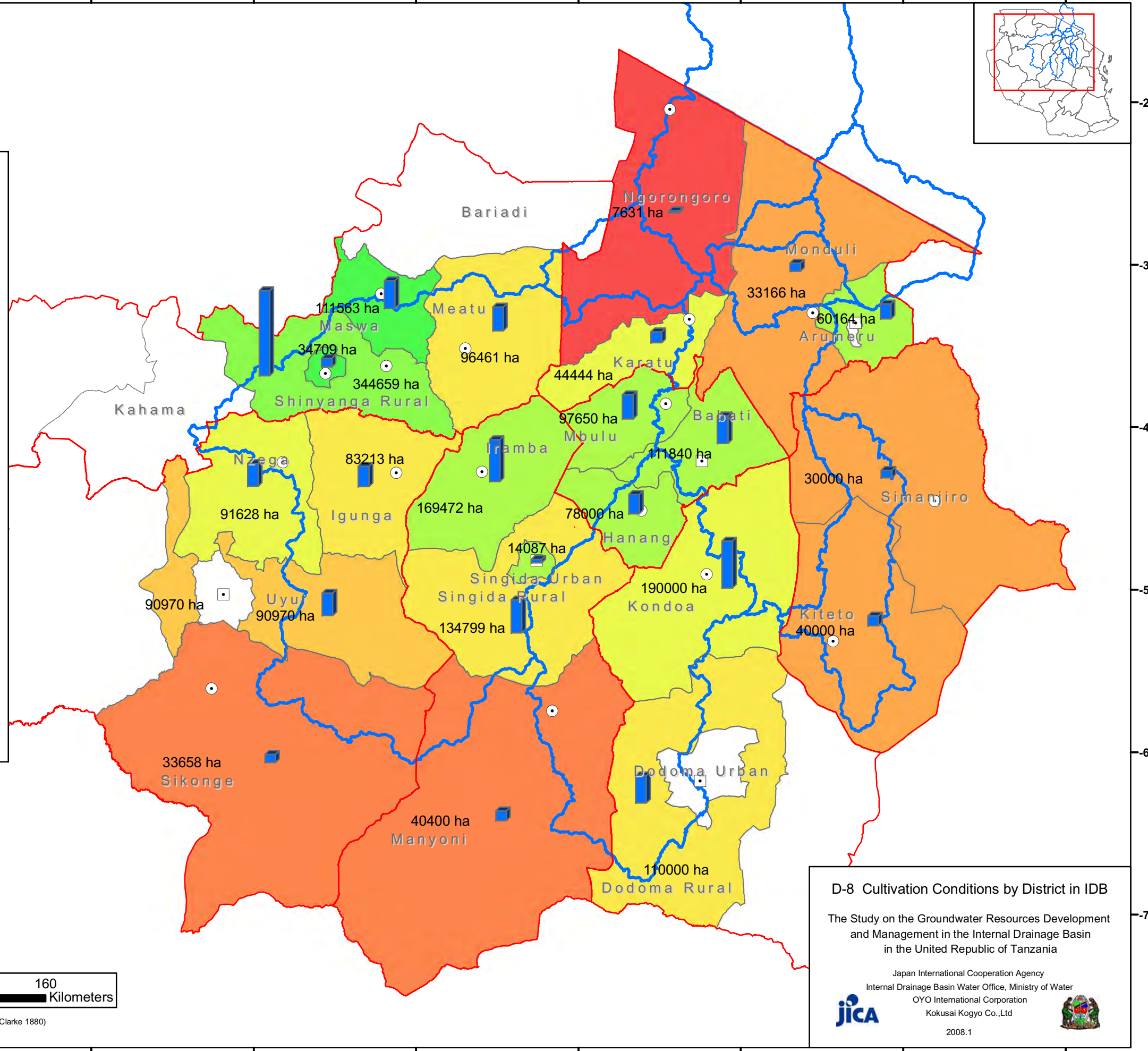
**Cultivated Area (ha)**

▭ Size of 170,000 ha

▭ Cultivated

**Cultivated Ratio (%)**

- 0.0 - 1.0
- 1.0 - 1.5
- 1.5 - 2.5
- 2.5 - 7.5
- 7.5 - 10
- 10.0 - 15.0
- 15.0 - 20.0
- 20.0 - 25.0
- 25.0 - 40.0
- 40.0 - 65.0



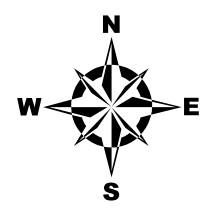
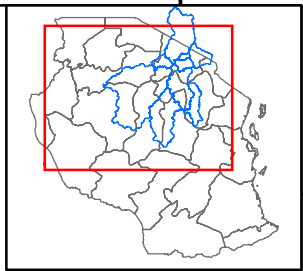
Coordinate System: Geographic, Arc 1960 (Spheroid:Clarke 1880)

**D-8 Cultivation Conditions by District in IDB**

The Study on the Groundwater Resources Development and Management in the Internal Drainage Basin in the United Republic of Tanzania

Japan International Cooperation Agency  
 Internal Drainage Basin Water Office, Ministry of Water  
 OYO International Corporation  
 Kokusai Kogyo Co.,Ltd

2008.1



**Legend**

- Region Capital
- District Capital
- ▭ Region Boundary
- ▭ District Boundary
- ▭ Sub Basin

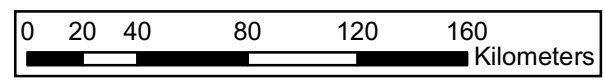
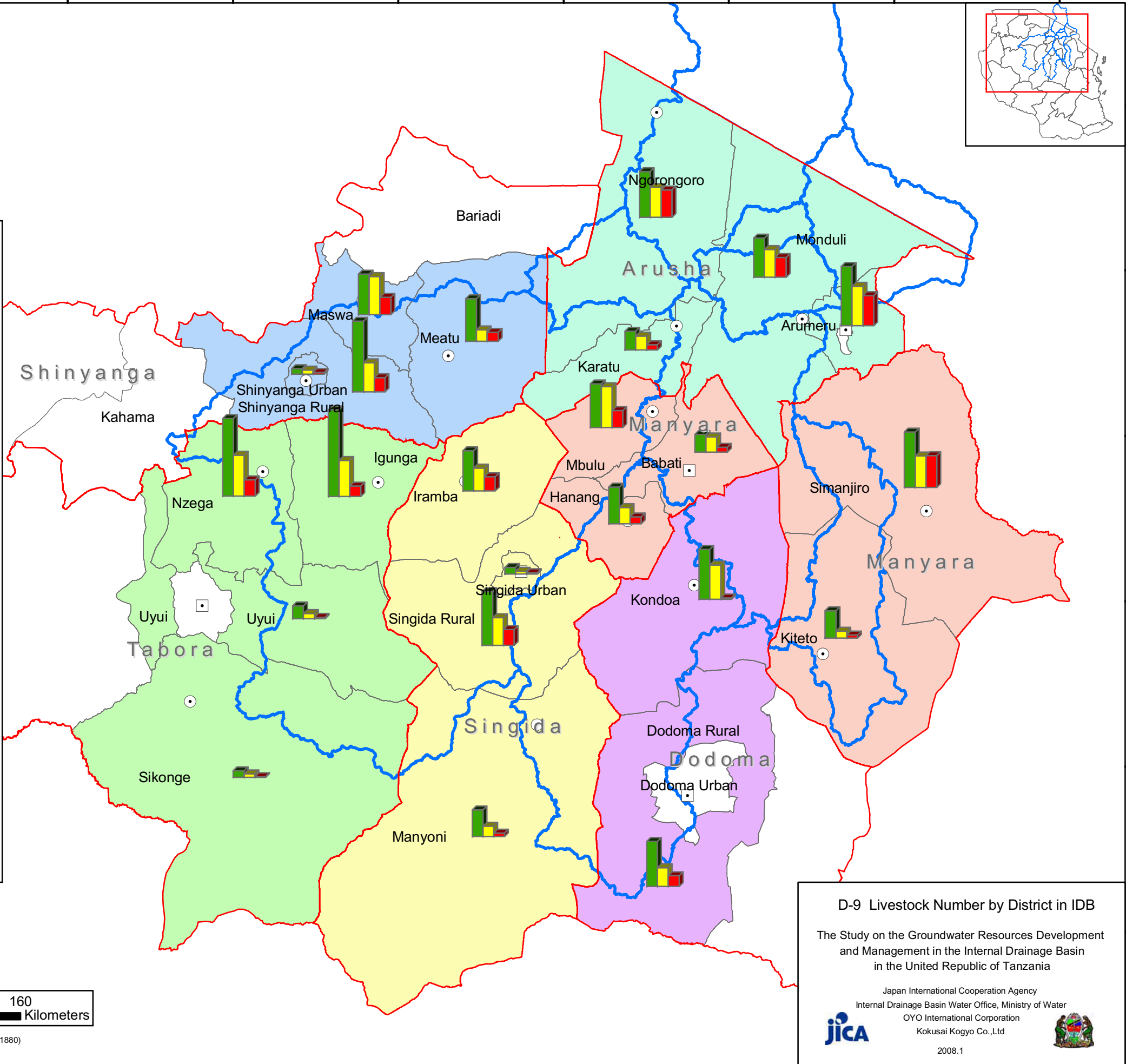
**Livestock Number**

Size of 360,000

- Cattle
- Goat
- Sheep

**Region**

- Arusha
- Dodoma
- Manyara
- Shinyanga
- Singida
- Tabora



Coordinate System: Geographic, Arc 1960 (Spheroid:Clarke 1880)

**D-9 Livestock Number by District in IDB**

The Study on the Groundwater Resources Development and Management in the Internal Drainage Basin in the United Republic of Tanzania

Japan International Cooperation Agency  
Internal Drainage Basin Water Office, Ministry of Water  
OYO International Corporation  
Kokusai Kogyo Co.,Ltd

2008.1