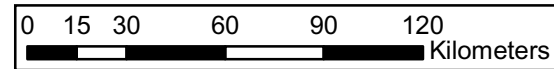


Legend

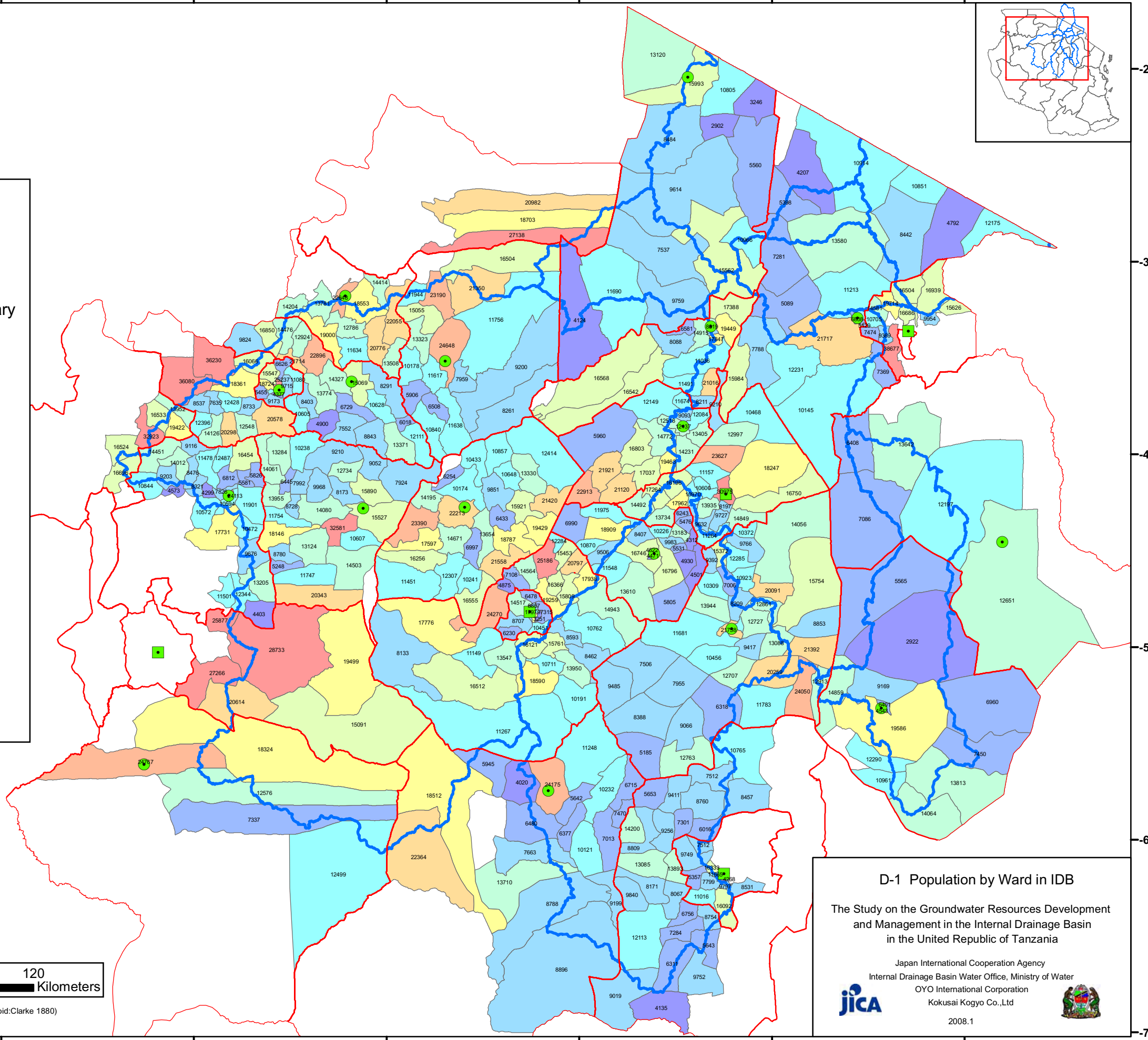
- Region Capital
- District Capital
- District Boundary
- Sub Basin

Population (Person)

- 2500 - 5000
- 5001 - 7500
- 7501 - 10000
- 10001 - 12500
- 12501 - 15000
- 15001 - 17500
- 17501 - 20000
- 20001 - 22500
- 22501 - 25000
- 25001 - 40000



Coordinate System: Geographic, Arc 1960 (Spheroid:Clarke 1880)



D-1 Population by Ward in IDB

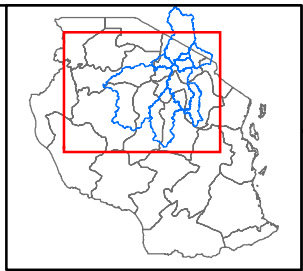
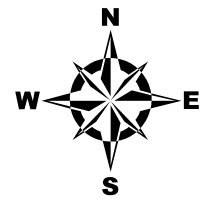
The Study on the Groundwater Resources Development and Management in the Internal Drainage Basin in the United Republic of Tanzania

Japan International Cooperation Agency
Internal Drainage Basin Water Office, Ministry of Water
OYO International Corporation
Kokusai Kogyo Co., Ltd



2008.1

31 32 33 34 35 36 37

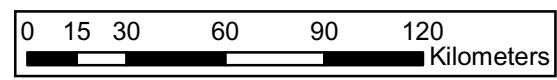
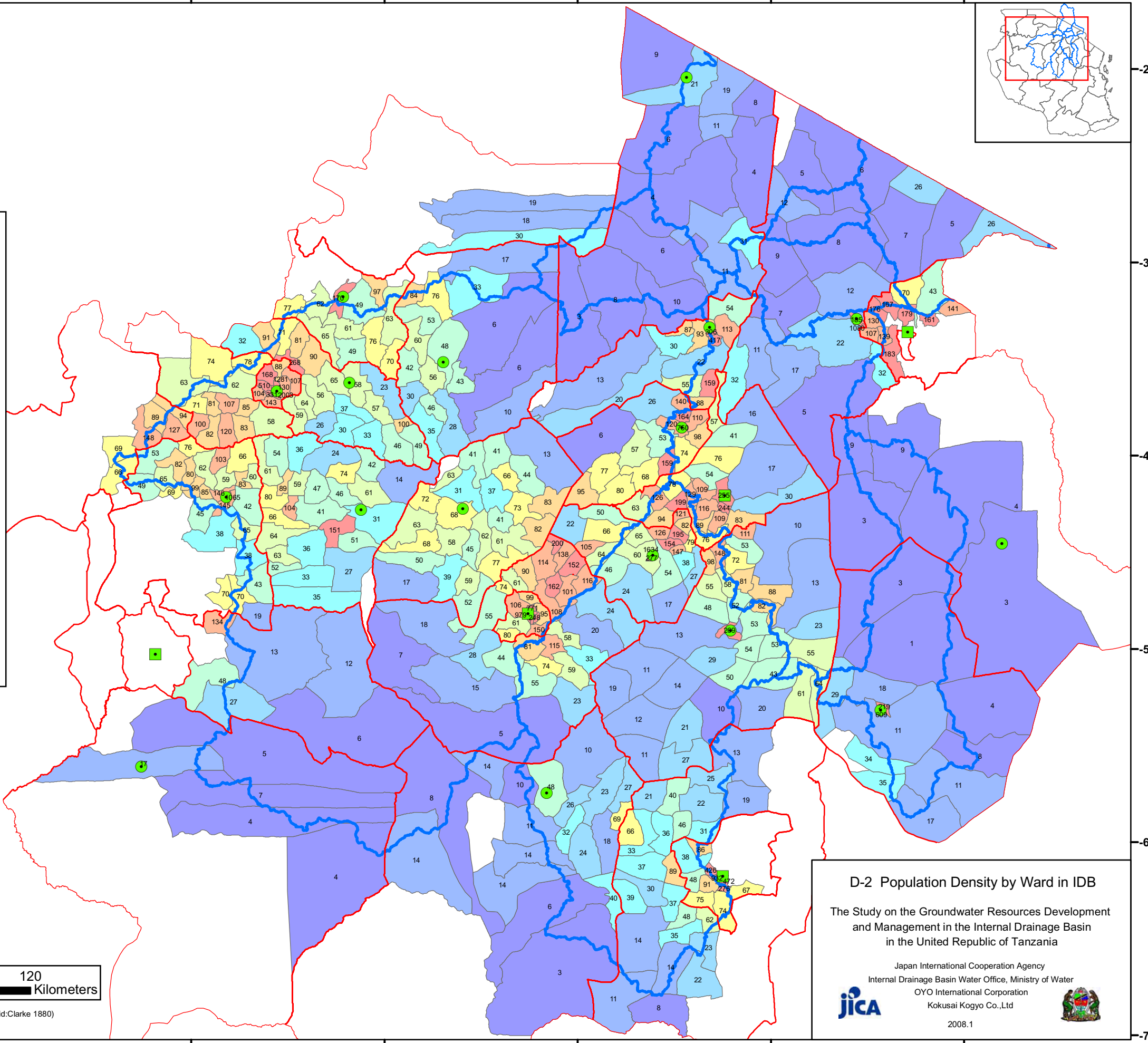


Legend

- Region Capital
- District Capital
- District Boundary
- Sub Basin

**Population Density
(person/km²)**

- 0 - 10
- 10 - 20
- 20 - 30
- 30 - 40
- 40 - 55
- 55 - 65
- 65 - 80
- 80 - 100
- 100 - 150
- 150 - 2500



Coordinate System: Geographic, Arc 1960 (Spheroid:Clarke 1880)

D-2 Population Density by Ward in IDB

The Study on the Groundwater Resources Development and Management in the Internal Drainage Basin in the United Republic of Tanzania

Japan International Cooperation Agency
Internal Drainage Basin Water Office, Ministry of Water
OYO International Corporation
Kokusai Kogyo Co.,Ltd

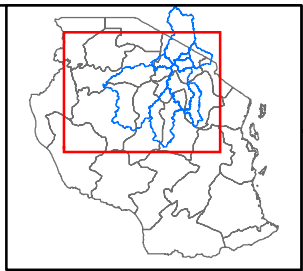
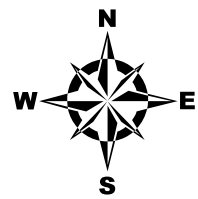
JICA

2008.1

-2
-3
-4
-5
-6
-7

-2
-3
-4
-5
-6
-7

31 32 33 34 35 36 37

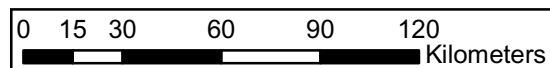


Legend

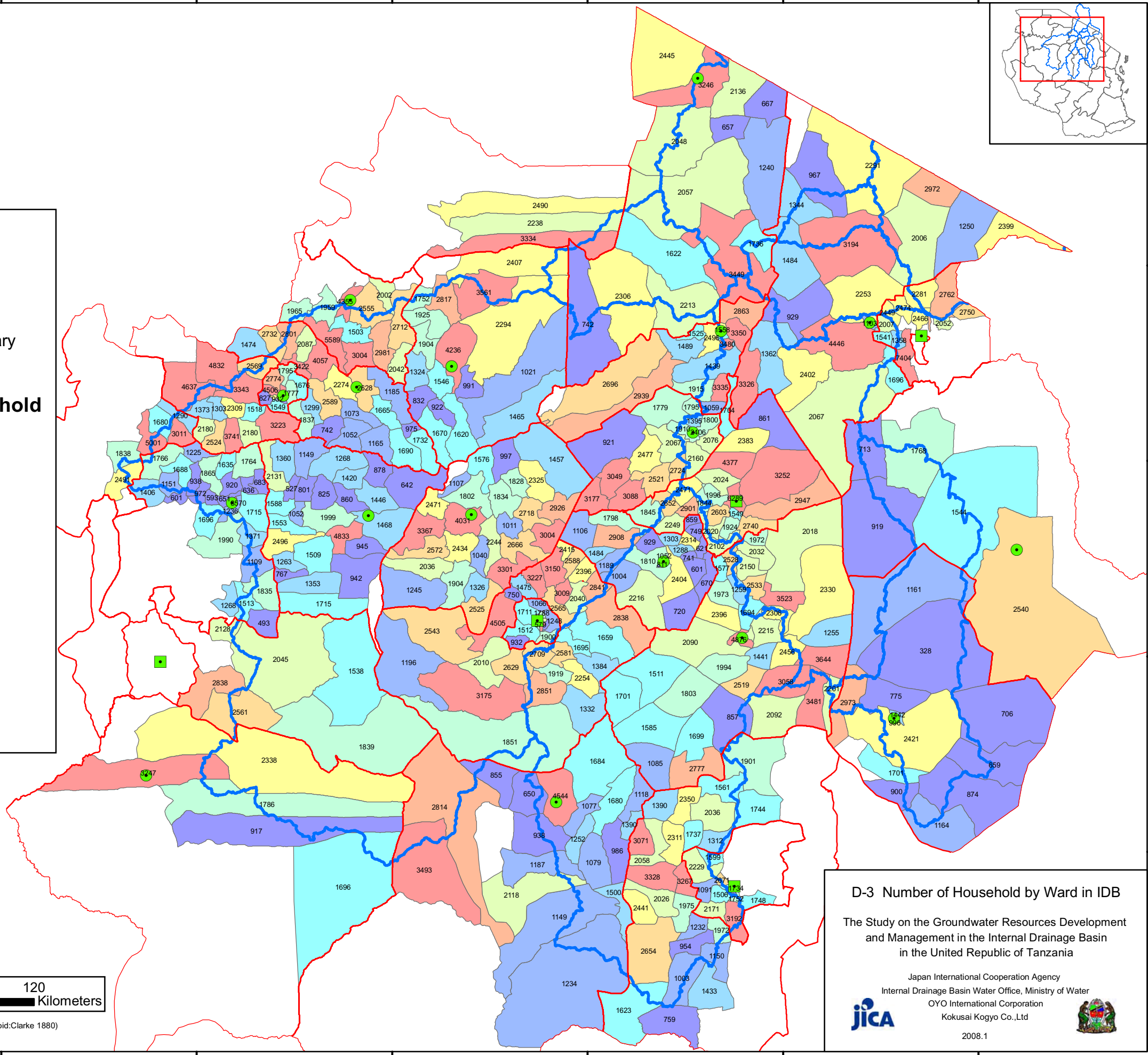
- Region Capital
- District Capital
- District Boundary
- Sub Basin

Number of Household

- 0 - 1000
- 1000 - 1250
- 1250 - 1500
- 1500 - 1750
- 1750 - 2000
- 2000 - 2250
- 2250 - 2500
- 2500 - 2750
- 2750 - 3000
- 3000 - 7500



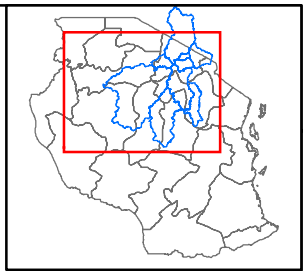
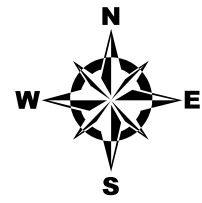
Coordinate System: Geographic, Arc 1960 (Spheroid:Clarke 1880)



D-3 Number of Household by Ward in IDB
The Study on the Groundwater Resources Development and Management in the Internal Drainage Basin in the United Republic of Tanzania

Japan International Cooperation Agency
Internal Drainage Basin Water Office, Ministry of Water
OYO International Corporation
Kokusai Kogyo Co., Ltd

2008.1

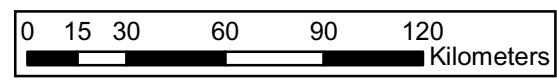


Legend

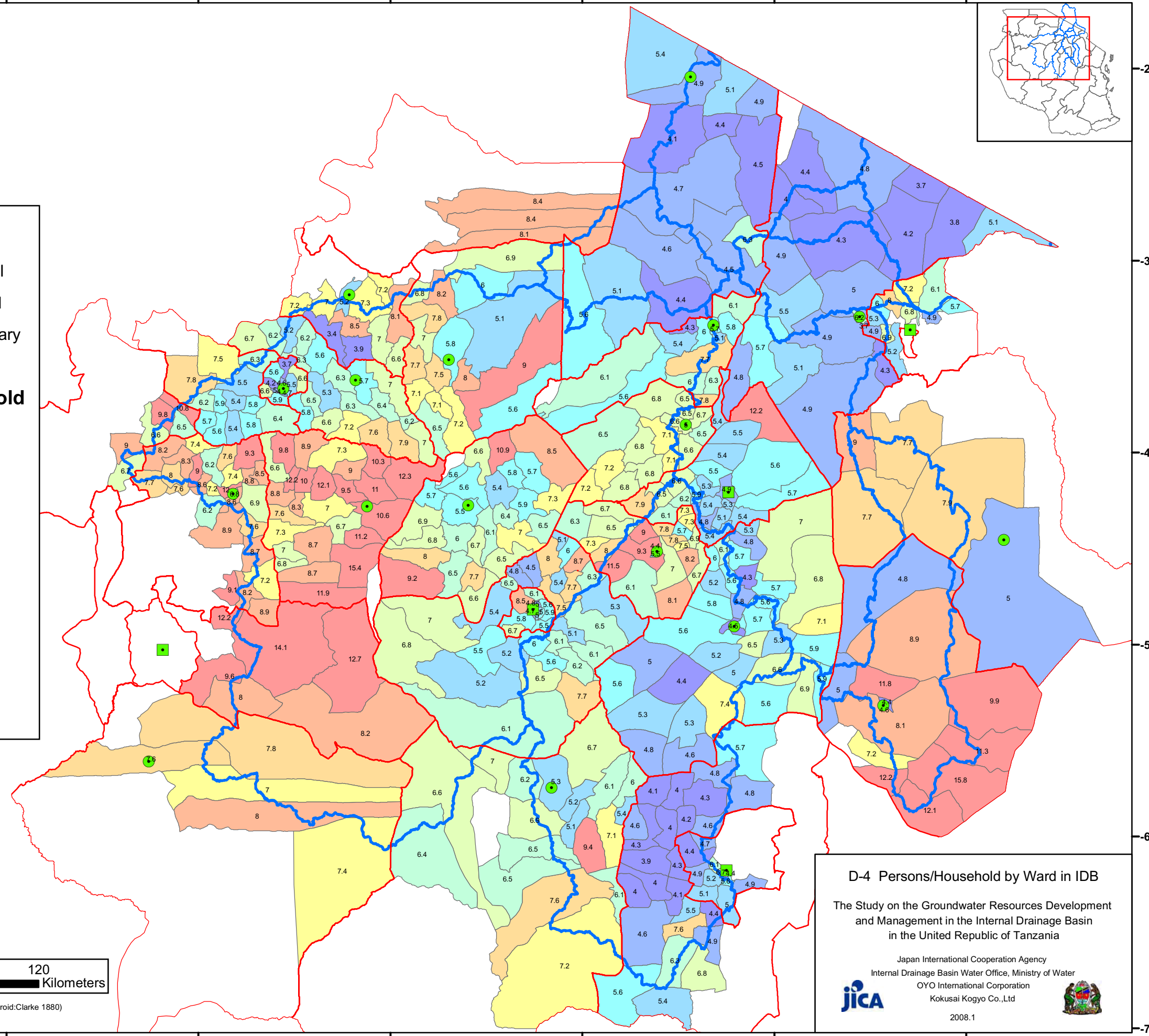
- Region Capital
- District Capital
- District Boundary
- Sub Basin

Persons/Household

- 0 - 4.5
- 4.5 - 5.0
- 5.0 - 5.5
- 5.5 - 6.0
- 6.0 - 6.5
- 6.5 - 7.0
- 7.0 - 7.5
- 7.5 - 8.0
- 8.0 - 9.0
- 9.0 -



Coordinate System: Geographic, Arc 1960 (Spheroid: Clarke 1880)



D-4 Persons/Household by Ward in IDB

The Study on the Groundwater Resources Development and Management in the Internal Drainage Basin in the United Republic of Tanzania

Japan International Cooperation Agency
Internal Drainage Basin Water Office, Ministry of Water
OYO International Corporation
Kokusai Kogyo Co., Ltd



2008.1