

Legend

- Lake
- Sub Basin
- Fault

Elevation (m)

High : 5870

Low : 0


A-6 Three Dimensional Topographic Image of IDB

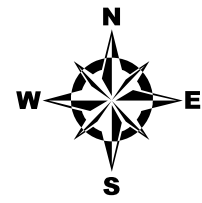
The Study on the Groundwater Resources Development and Management in the Internal Drainage Basin in the United Republic of Tanzania

Japan International Cooperation Agency
Internal Drainage Basin Water Office, Ministry of Water
OYO International Corporation
Kokusai Kogyo Co.,Ltd

jica

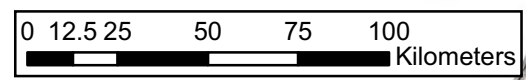
2008.1



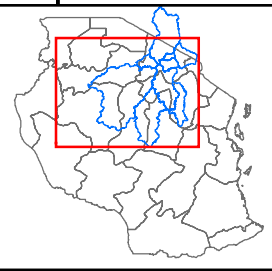


Legend

- Region Capital
- District Capital
- Other City
- Lake
- Region Boundary
- Sub Basin
- Railway
- Main Road
- Local Road
- Minor Road



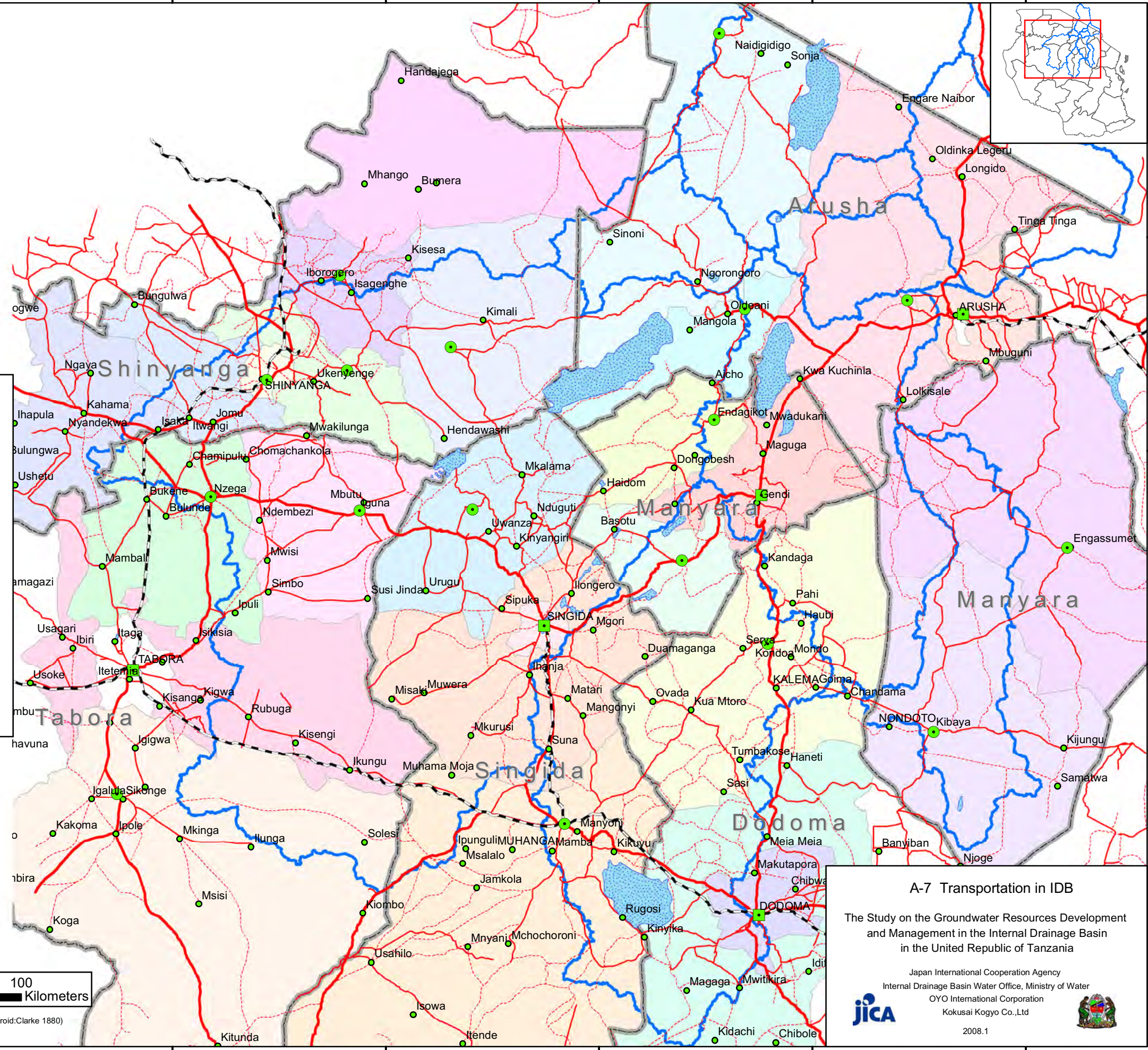
Coordinate System: Geographic, Arc 1960 (Spheroid: Clarke 1880)

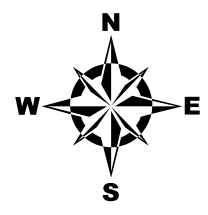
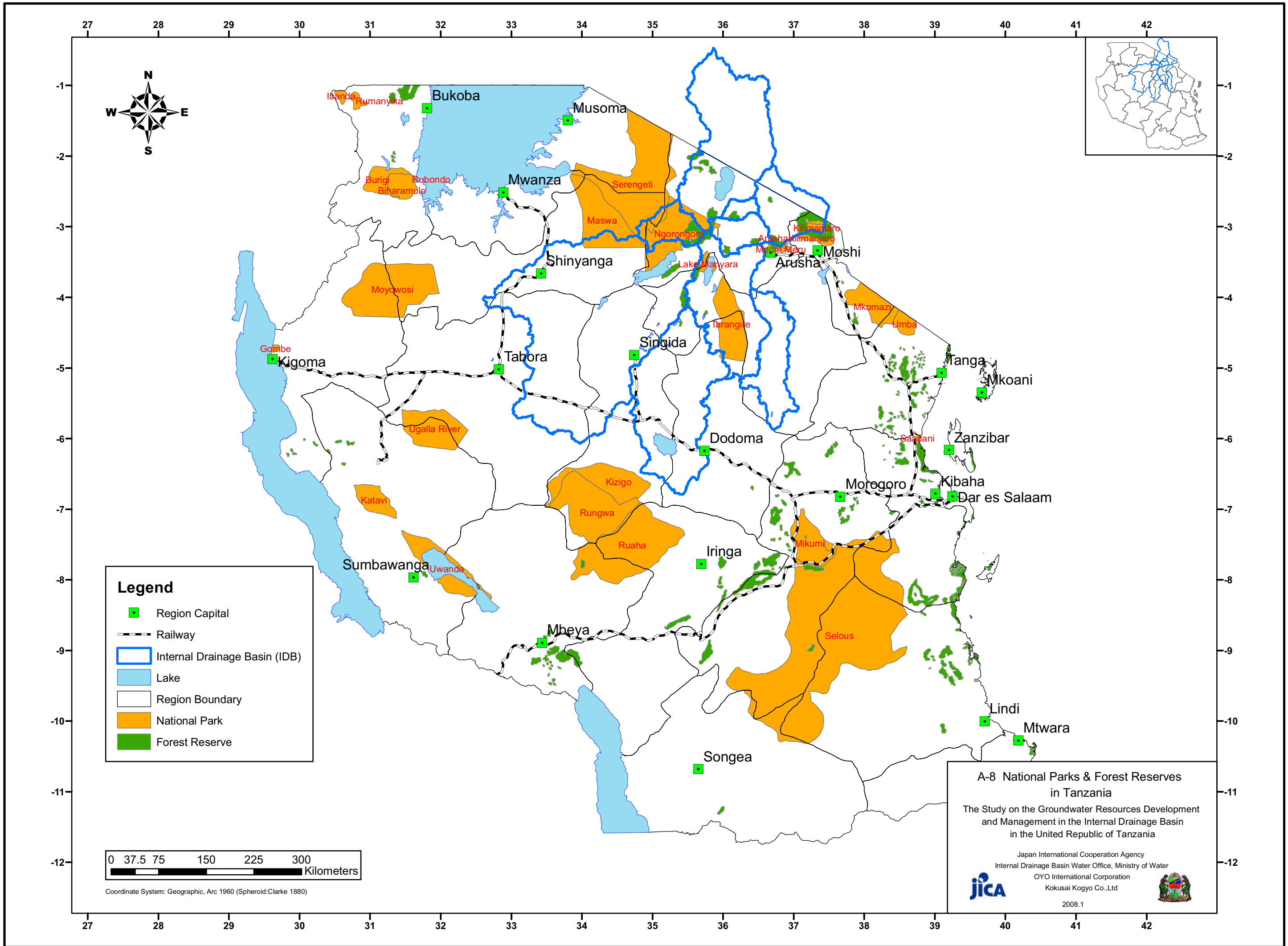


A-7 Transportation in IDB
The Study on the Groundwater Resources Development and Management in the Internal Drainage Basin in the United Republic of Tanzania

Japan International Cooperation Agency
Internal Drainage Basin Water Office, Ministry of Water
OYO International Corporation
Kokusai Kogyo Co., Ltd

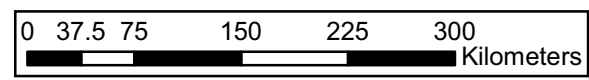
2008.1





Legend

- Region Capital
- Railway
- Internal Drainage Basin (IDB)
- Lake
- Region Boundary
- National Park
- Forest Reserve



Coordinate System: Geographic, Arc 1960 (Spheroid: Clarke 1880)

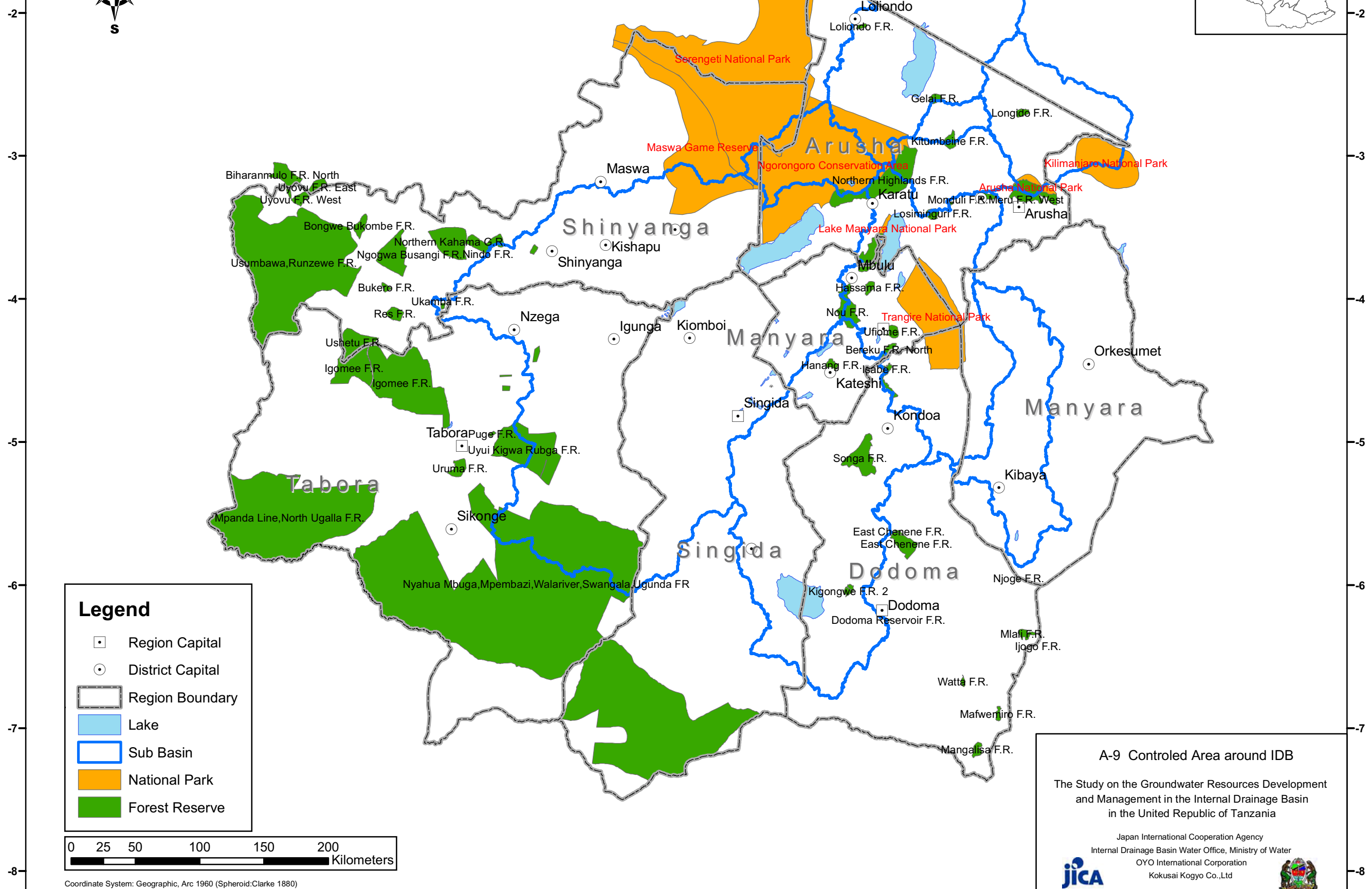
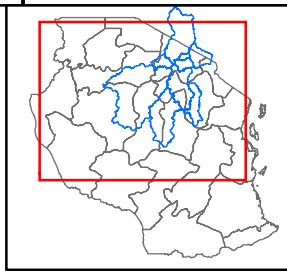
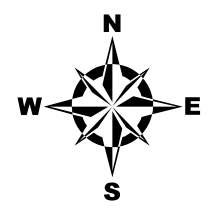
**A-8 National Parks & Forest Reserves
in Tanzania**

The Study on the Groundwater Resources Development
and Management in the Internal Drainage Basin
in the United Republic of Tanzania

Japan International Cooperation Agency
Internal Drainage Basin Water Office, Ministry of Water
OYO International Corporation
Kokusai Kogyo Co., Ltd

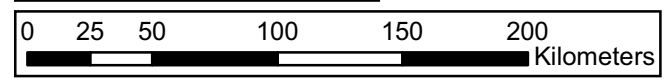
2008.1

30 31 32 33 34 35 36 37 38 39



Legend

- Region Capital
- District Capital
- ▭ Region Boundary
- Lake
- ▭ Sub Basin
- National Park
- Forest Reserve



Coordinate System: Geographic, Arc 1960 (Spheroid:Clarke 1880)

A-9 Controlled Area around IDB

The Study on the Groundwater Resources Development and Management in the Internal Drainage Basin in the United Republic of Tanzania

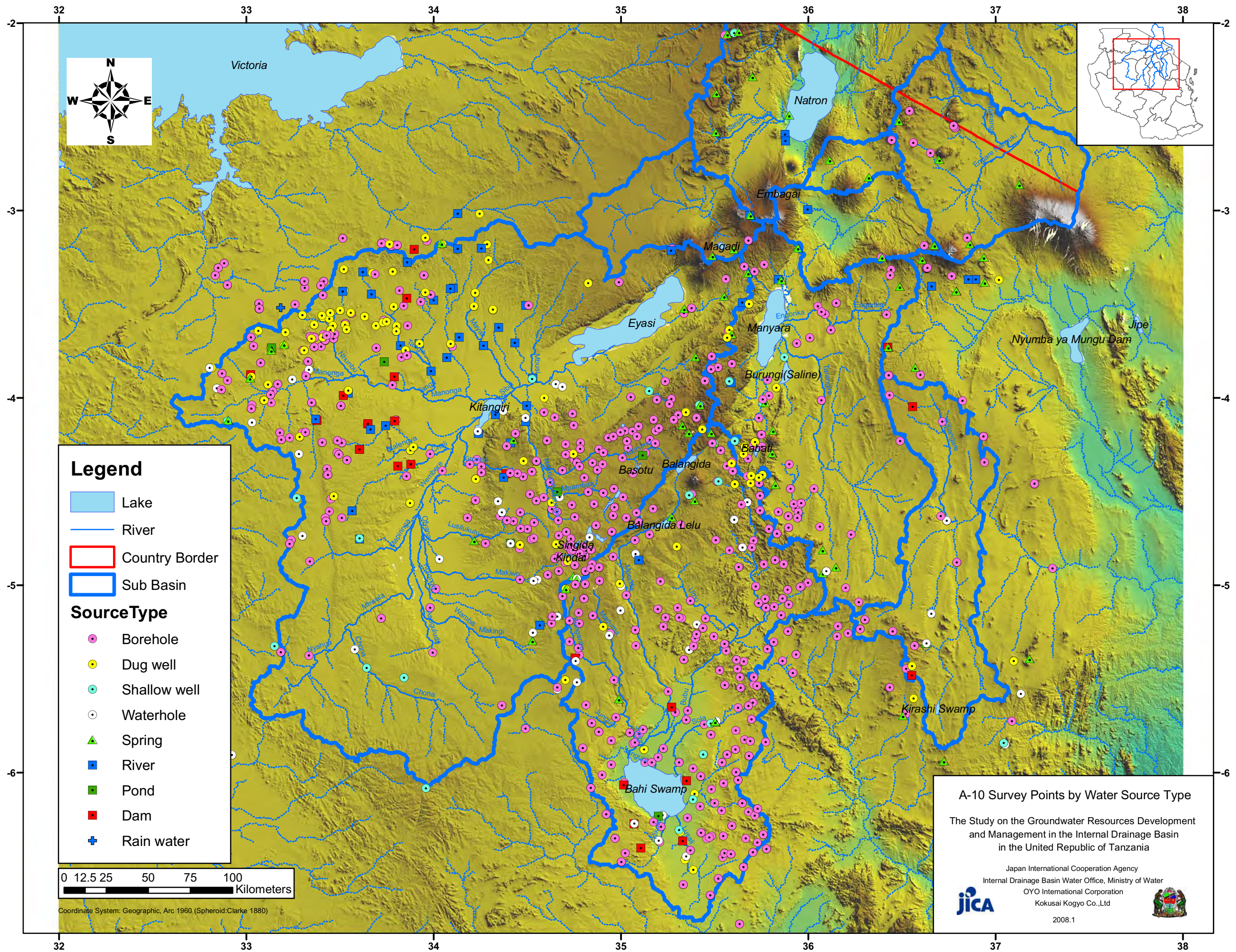
Japan International Cooperation Agency
Internal Drainage Basin Water Office, Ministry of Water
OYO International Corporation
Kokusai Kogyo Co., Ltd

JICA

2008.1



30 31 32 33 34 35 36 37 38 39

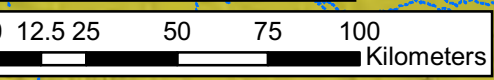


Legend

- Lake
- River
- Country Border
- Sub Basin

Source Type

- Borehole
- Dug well
- Shallow well
- Waterhole
- Spring
- River
- Pond
- Dam
- Rain water



Coordinate System: Geographic, Arc 1960 (Spheroid: Clarke 1880)

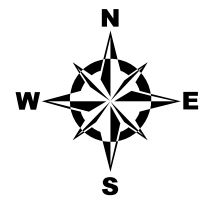
A-10 Survey Points by Water Source Type

The Study on the Groundwater Resources Development and Management in the Internal Drainage Basin in the United Republic of Tanzania

Japan International Cooperation Agency
 Internal Drainage Basin Water Office, Ministry of Water
 OYO International Corporation
 Kokusai Kogyo Co., Ltd

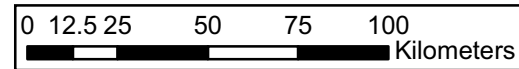


2008.1

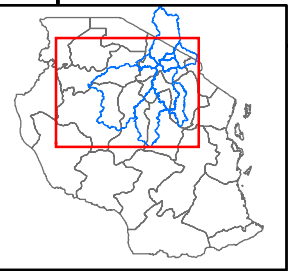


Legend

- WQ Survey (Rainy)
- WQ Survey (Dry)
- WQ Lab Analysis (Dry)
- Inventory Survey (Rainy)
- ⊕ Test Drilling Point
- Lake
- Region Boundary
- Sub Basin
- Railway
- Road**
- Main Road
- Local Road
- - - Minor Road



Coordinate System: Geographic, Arc 1960 (Spheroid:Clarke 1880)



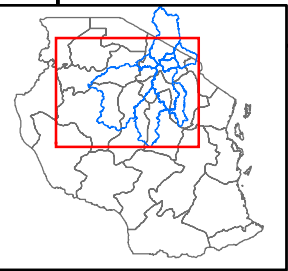
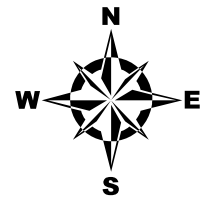
A-11 Survey Points for Water Quality Analysis

The Study on the Groundwater Resources Development and Management in the Internal Drainage Basin in the United Republic of Tanzania

Japan International Cooperation Agency
Internal Drainage Basin Water Office, Ministry of Water
OYO International Corporation
Kokusai Kogyo Co., Ltd

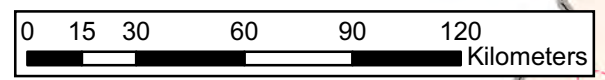


2008.1



Legend

- Lake
- Region Boundary
- Sub Basin
- Railway
- Road**
 - Main Road
 - Local Road
 - Minor Road
- Inventory Survey

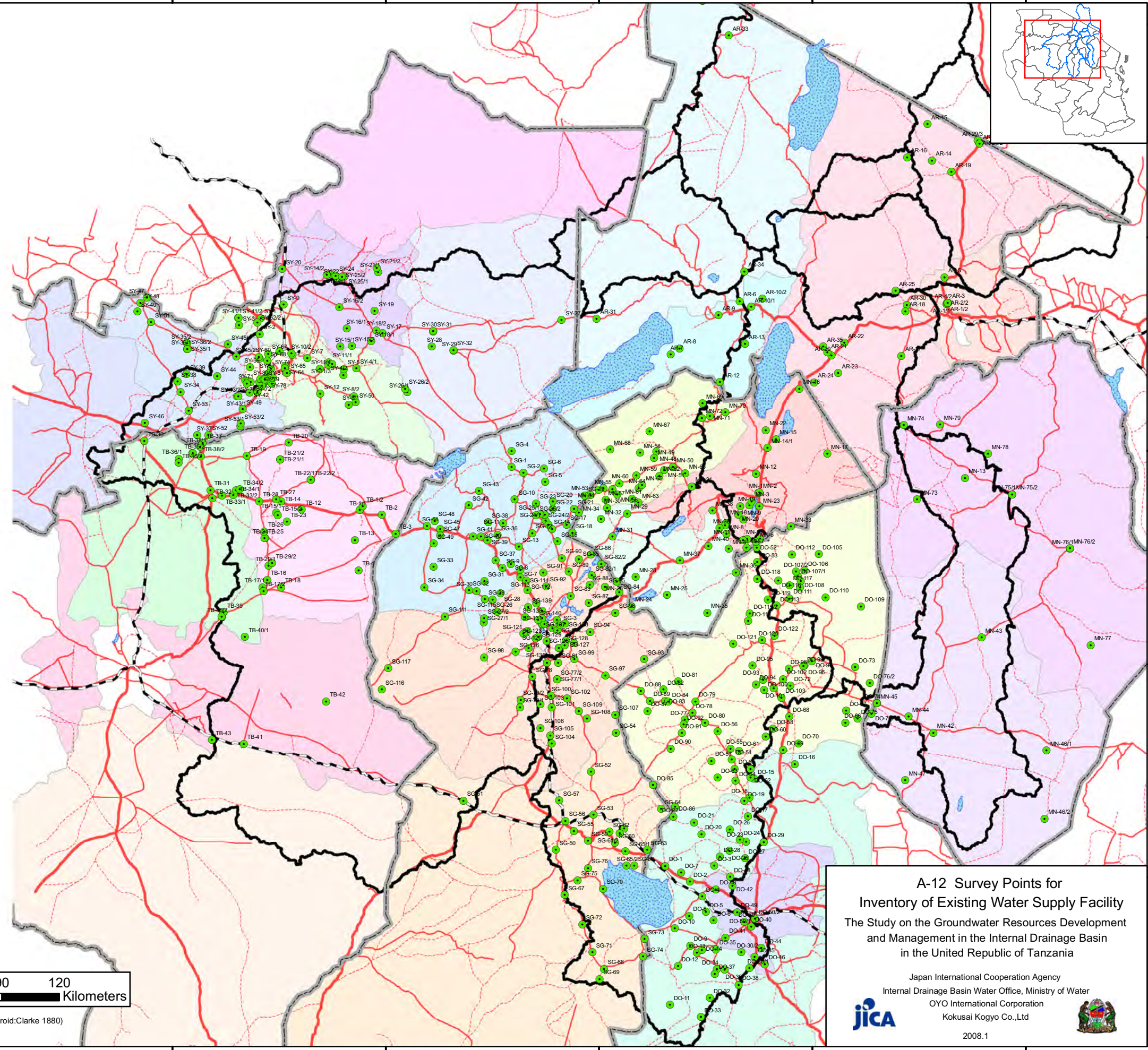


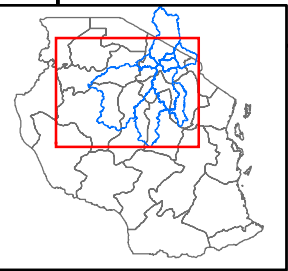
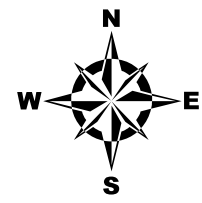
Coordinate System: Geographic, Arc 1960 (Spheroid:Clarke 1880)

**A-12 Survey Points for
Inventory of Existing Water Supply Facility**
The Study on the Groundwater Resources Development
and Management in the Internal Drainage Basin
in the United Republic of Tanzania

Japan International Cooperation Agency
Internal Drainage Basin Water Office, Ministry of Water
OYO International Corporation
Kokusai Kogyo Co.,Ltd

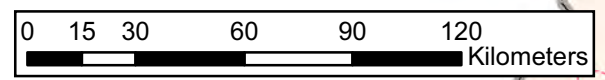
2008.1





Legend

- Socio-Economic Survey
- Dental Fluorosis Survey
- Lake
- Region Boundary
- Sub Basin
- Railway
- Road**
- Main Road
- Local Road
- Minor Road



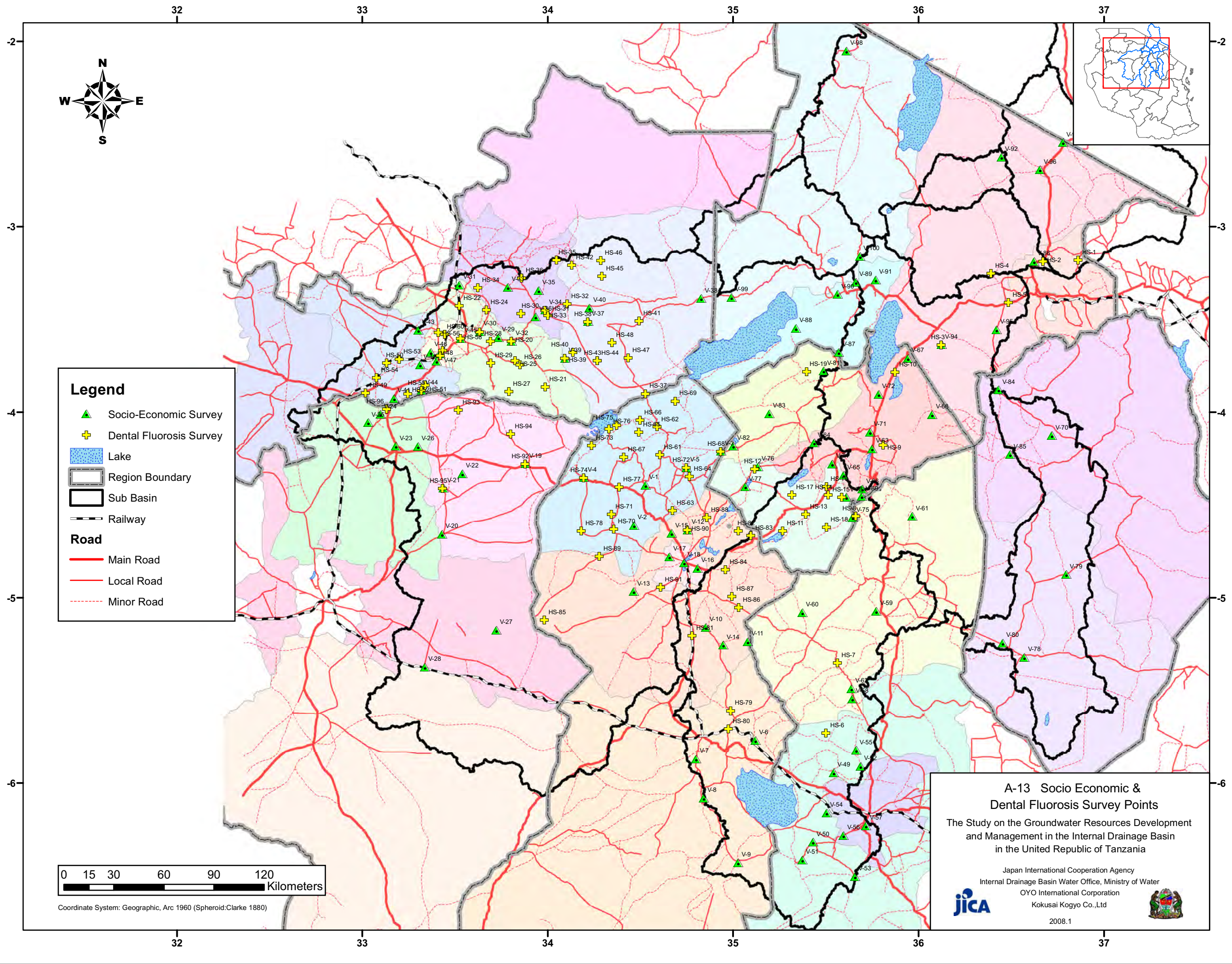
Coordinate System: Geographic, Arc 1960 (Spheroid:Clarke 1880)

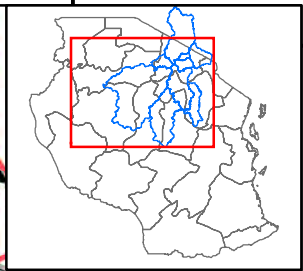
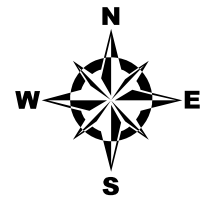
A-13 Socio Economic & Dental Fluorosis Survey Points

The Study on the Groundwater Resources Development and Management in the Internal Drainage Basin in the United Republic of Tanzania

Japan International Cooperation Agency
Internal Drainage Basin Water Office, Ministry of Water
OYO International Corporation
Kokusai Kogyo Co.,Ltd

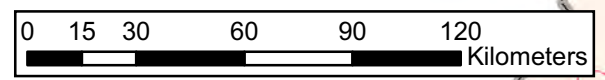
2008.1





Legend

- ⊕ Test Drilling Point
- Geophysical Survey
- Lake
- ▭ Region Boundary
- ▭ Sub Basin
- Railway
- Road**
- Main Road
- Local Road
- Minor Road



Coordinate System: Geographic, Arc 1960 (Spheroid:Clarke 1880)

A-14 Geophysical & Test Drilling Survey Points

The Study on the Groundwater Resources Development and Management in the Internal Drainage Basin in the United Republic of Tanzania

Japan International Cooperation Agency
Internal Drainage Basin Water Office, Ministry of Water
OYO International Corporation
Kokusai Kogyo Co.,Ltd

2008.1

