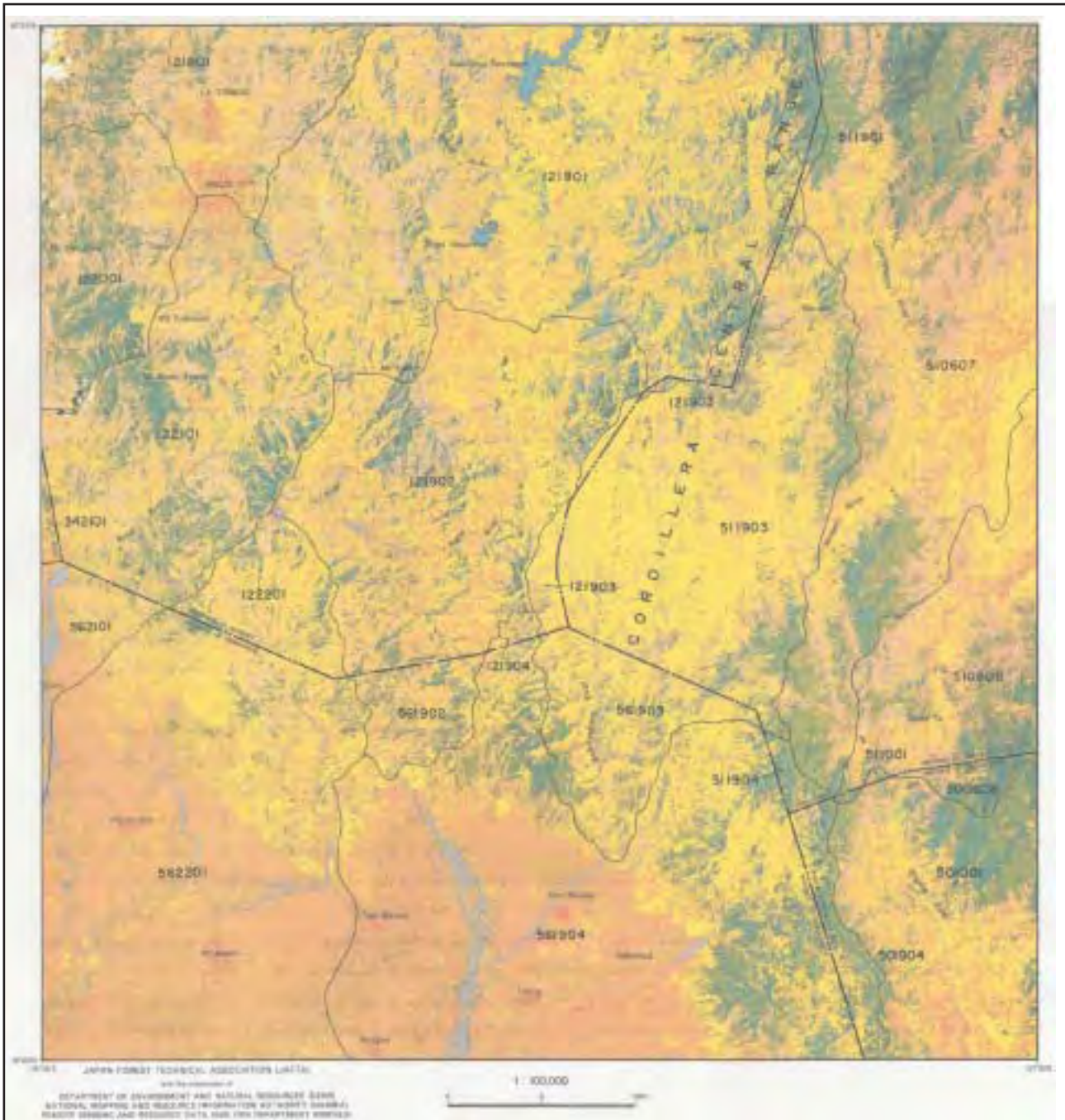
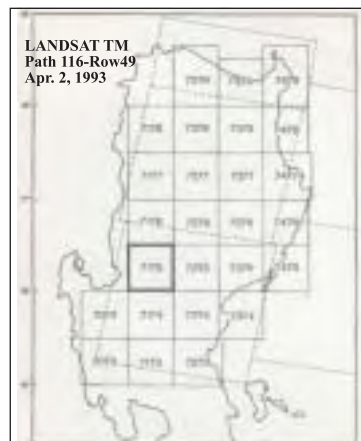


*The Feasibility Study of the Flood Control Project for
the Lower Cagayan River in the Republic of the Philippines
Final Report
Data Book*

***WM-1 Land Use and Forest Type Map
in Cagayan River Basin***



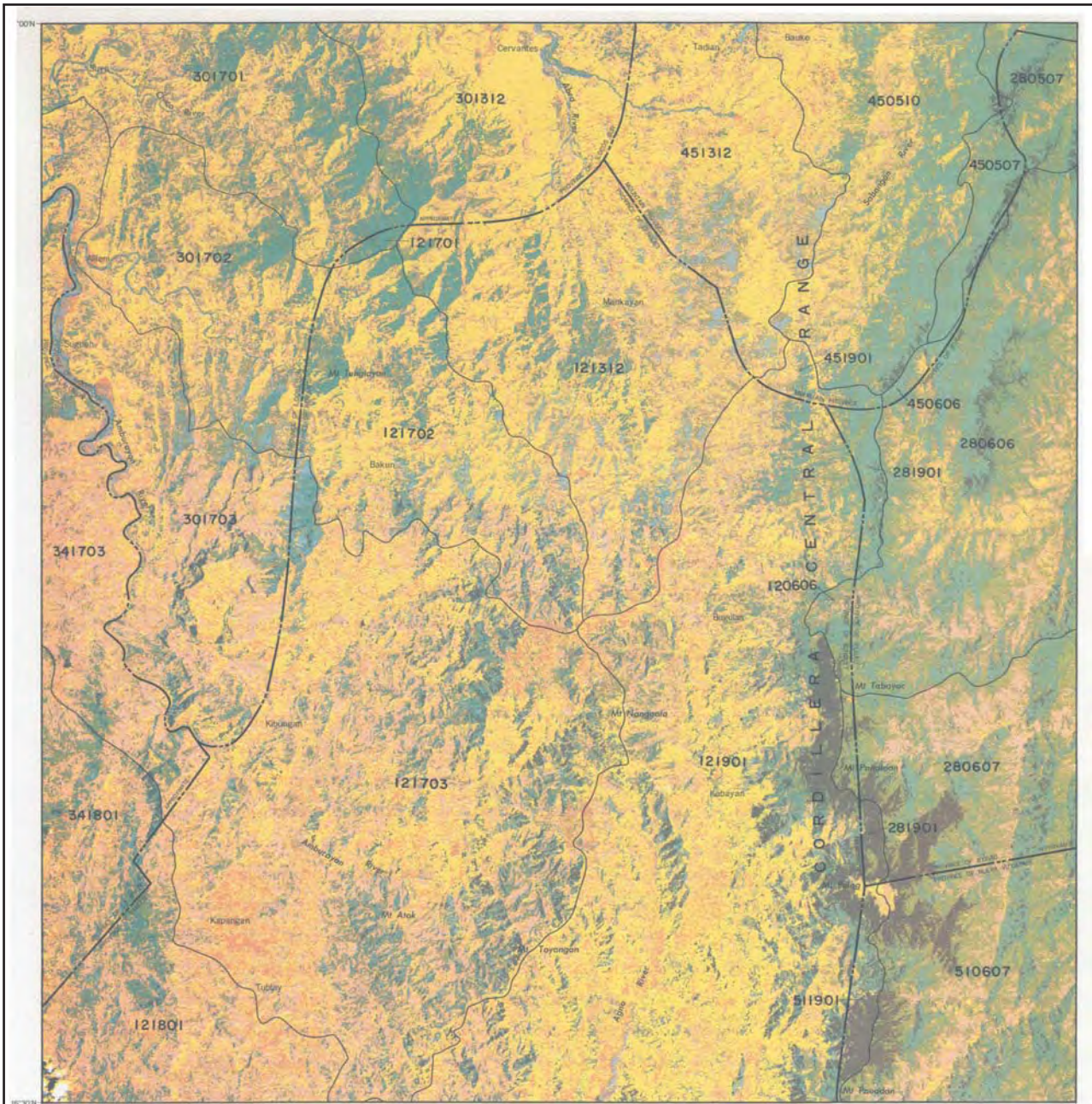
INFORMATION SYSTEM DEVELOPMENT PROJECT
FOR THE MANAGEMENT OF TROPICAL FOREST
(Source: Land Use and Forest Type Map)



*The Feasibility Study of the Flood Control Project
for the Lower Cagayan River
in the Republic of the Philippines*

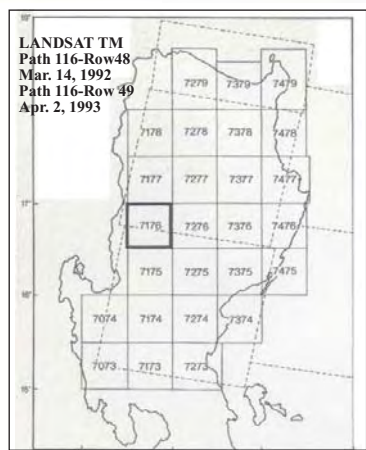
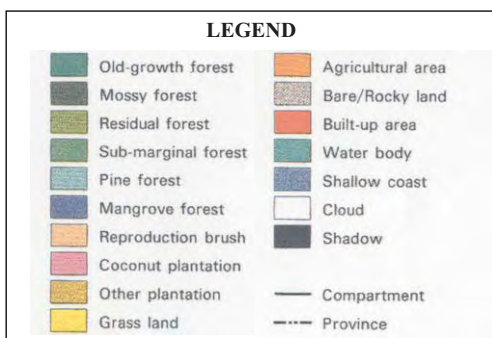
JAPAN INTERNATIONAL COOPERATION AGENCY

**Land Use and Forest Type Map
7175 San Nicolas**



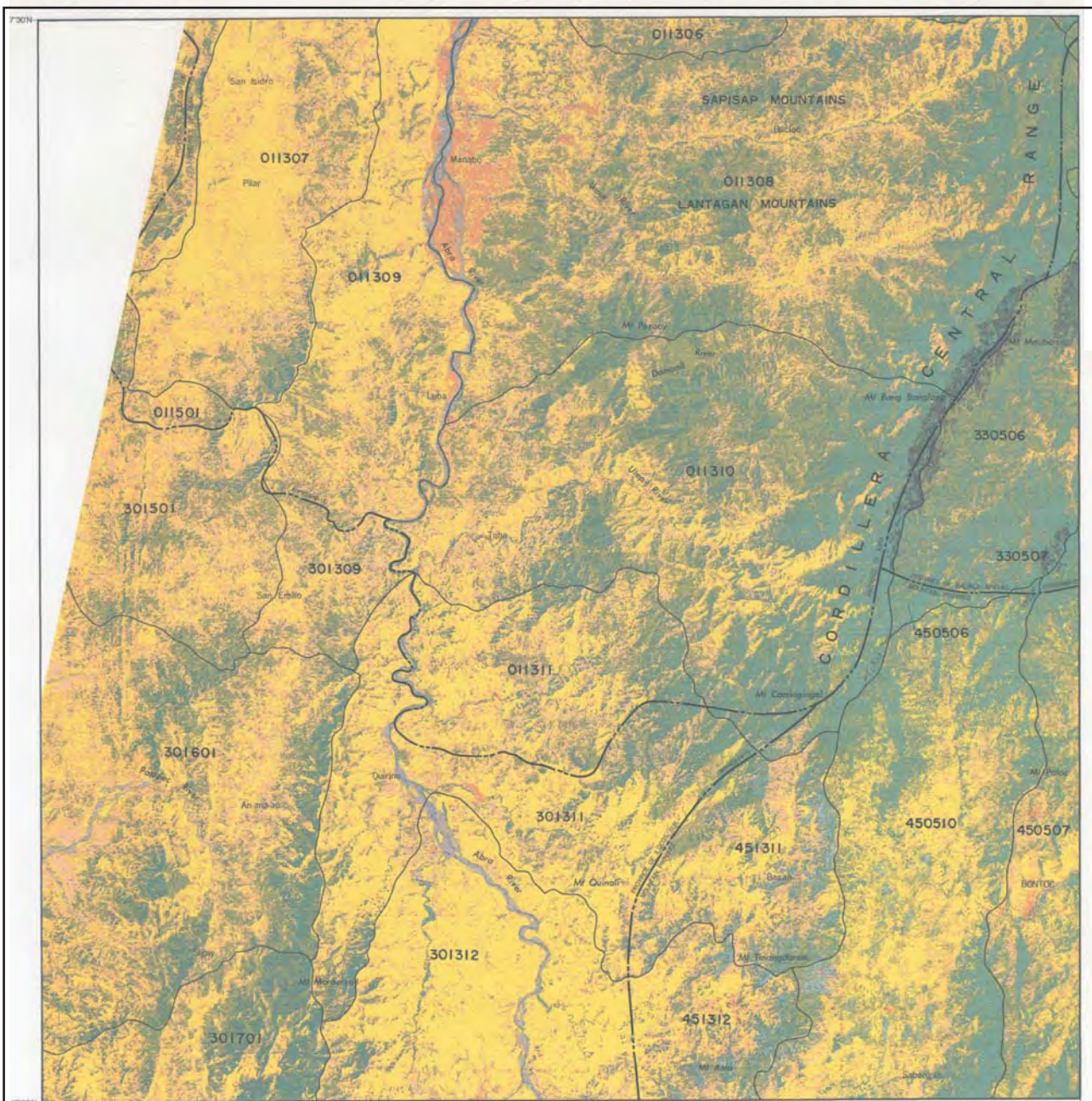
16°30'N 120°30'E JAPAN FOREST TECHNICAL ASSOCIATION (JAFTA) with the cooperation of DEPARTMENT OF ENVIRONMENT AND NATURAL RESOURCES (DENR) NATIONAL MAPPING AND RESOURCE INFORMATION AUTHORITY (NAMRIA) REMOTE SENSING AND RESOURCE DATA ANALYSIS DEPARTMENT (RSRDAD) 1:100,000 0 5 10km 121°00'E

INFORMATION SYSTEM DEVELOPMENT PROJECT FOR THE MANAGEMENT OF TROPICAL FOREST (Source: Land Use and Forest Type Map)



The Feasibility Study of the Flood Control Project for the Lower Cagayan River in the Republic of the Philippines
 JAPAN INTERNATIONAL COOPERATION AGENCY

Figure
Land Use and Forest Type Map
7176 Kabayan

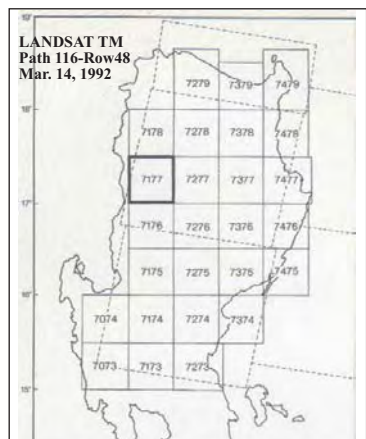


JAPAN FOREST TECHNICAL ASSOCIATION (JAFTA)
with the cooperation of
DEPARTMENT OF ENVIRONMENT AND NATURAL RESOURCES (DENR)
NATIONAL MAPPING AND RESOURCE INFORMATION AUTHORITY (NAMRIA)
BIOMASS MONITORING AND RESOURCE DATA ANALYSIS DEPARTMENT (BSRDAD)



INFORMATION SYSTEM DEVELOPMENT PROJECT
FOR THE MANAGEMENT OF TROPICAL FOREST
(Source: Land Use and Forest Type Map)

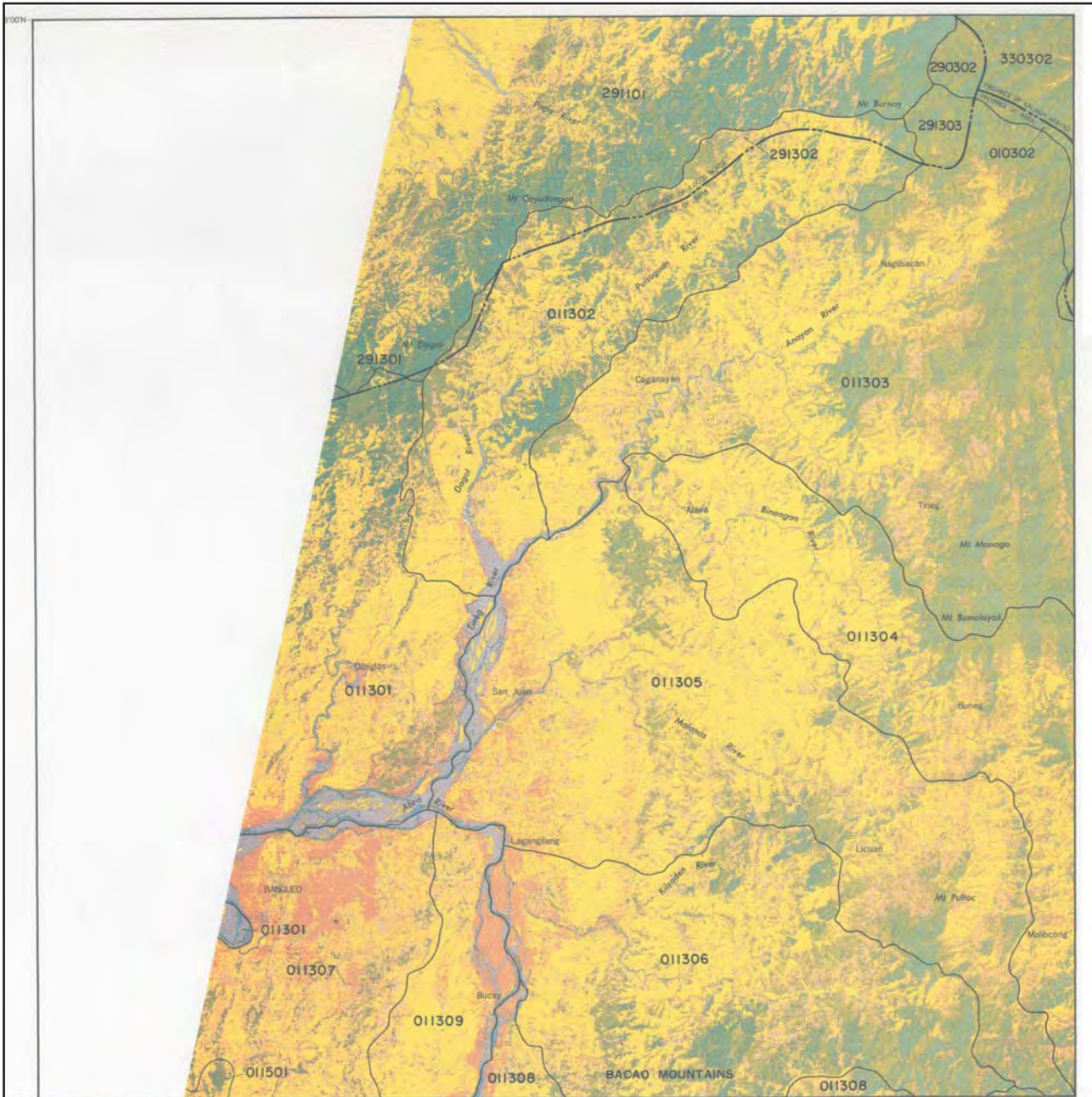
LEGEND			
	Old-growth forest		Agricultural area
	Mossy forest		Bare/Rocky land
	Residual forest		Built-up area
	Sub-marginal forest		Water body
	Pine forest		Shallow coast
	Mangrove forest		Cloud
	Reproduction brush		Shadow
	Coconut plantation		Compartment
	Other plantation		Province
	Grass land		



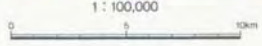
*The Feasibility Study of the Flood Control Project
for the Lower Cagayan River
in the Republic of the Philippines*

Figure

**Land Use and Forest Type Map
7177 Bontoc**

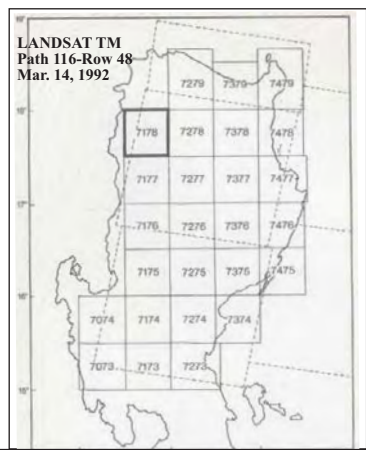


JAPAN FOREST TECHNICAL ASSOCIATION (JAFTA)
with the cooperation of
DEPARTMENT OF ENVIRONMENT AND NATURAL RESOURCES (DENR)
NATIONAL MAPPING AND RESOURCE INFORMATION AUTHORITY (NAMRIA)
REMOTE SENSING AND RESOURCE DATA ANALYSIS DEPARTMENT (RSRDA)



INFORMATION SYSTEM DEVELOPMENT PROJECT
FOR THE MANAGEMENT OF TROPICAL FOREST
(Source: Land Use and Forest Type Map)

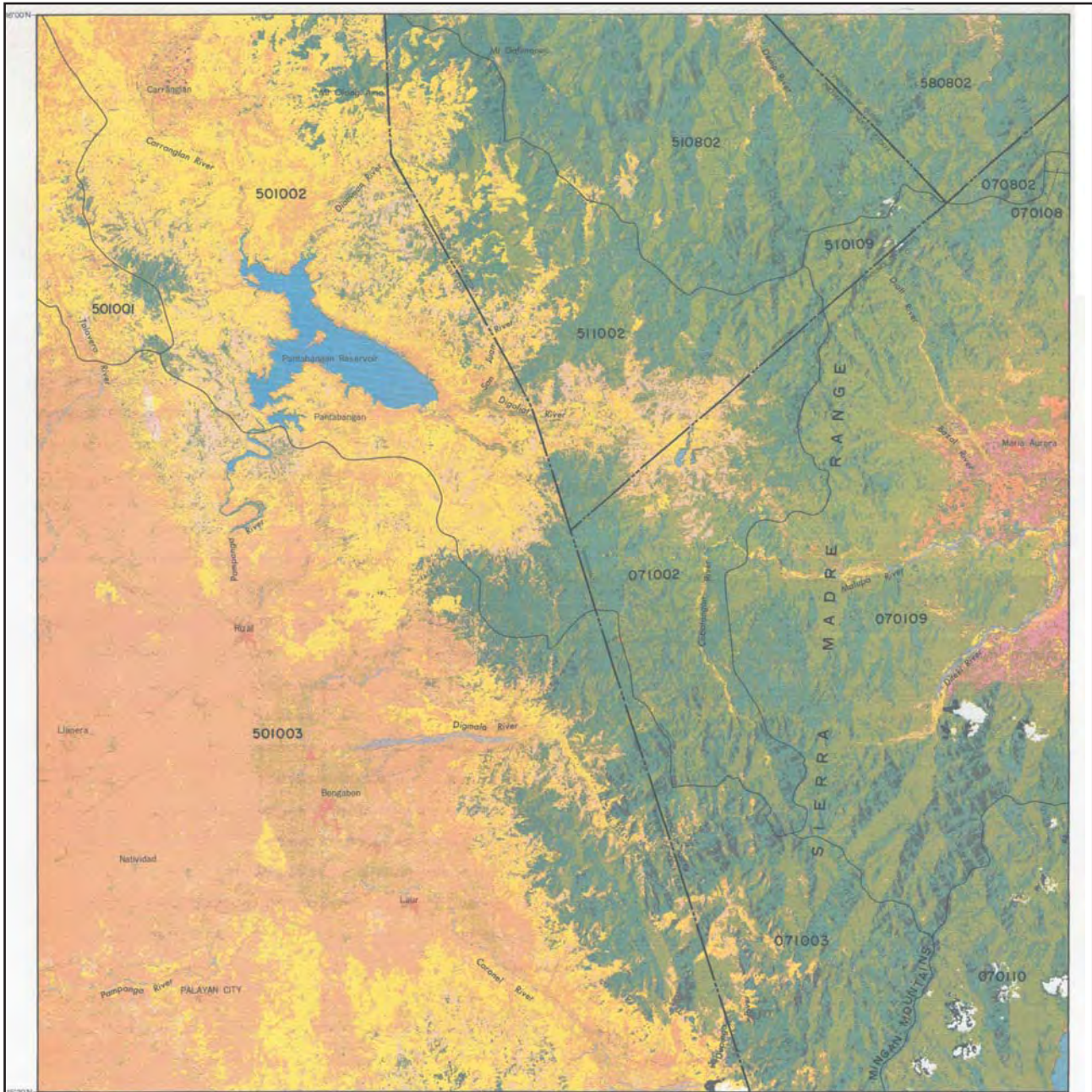
LEGEND			
	Old-growth forest		Agricultural area
	Mossy forest		Bare/Rocky land
	Residual forest		Built-up area
	Sub-marginal forest		Water body
	Pine forest		Shallow coast
	Mangrove forest		Cloud
	Reproduction brush		Shadow
	Coconut plantation		Compartment
	Other plantation		Province
	Grass land		



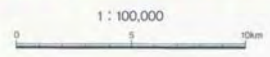
*The Feasibility Study of the Flood Control Project
for the Lower Cagayan River
in the Republic of the Philippines*

JAPAN INTERNATIONAL COOPERATION AGENCY

Figure
Land Use and Forest Type Map
7178 Bangued



JAPAN FOREST TECHNICAL ASSOCIATION (JAFTA)
 with the cooperation of
 DEPARTMENT OF ENVIRONMENT AND NATURAL RESOURCES (DENR)
 NATIONAL MAPPING AND RESOURCE INFORMATION AUTHORITY (NAMRIA)
 REMOTE SENSING AND RESOURCE DATA ANALYSIS DEPARTMENT (RSRAD)



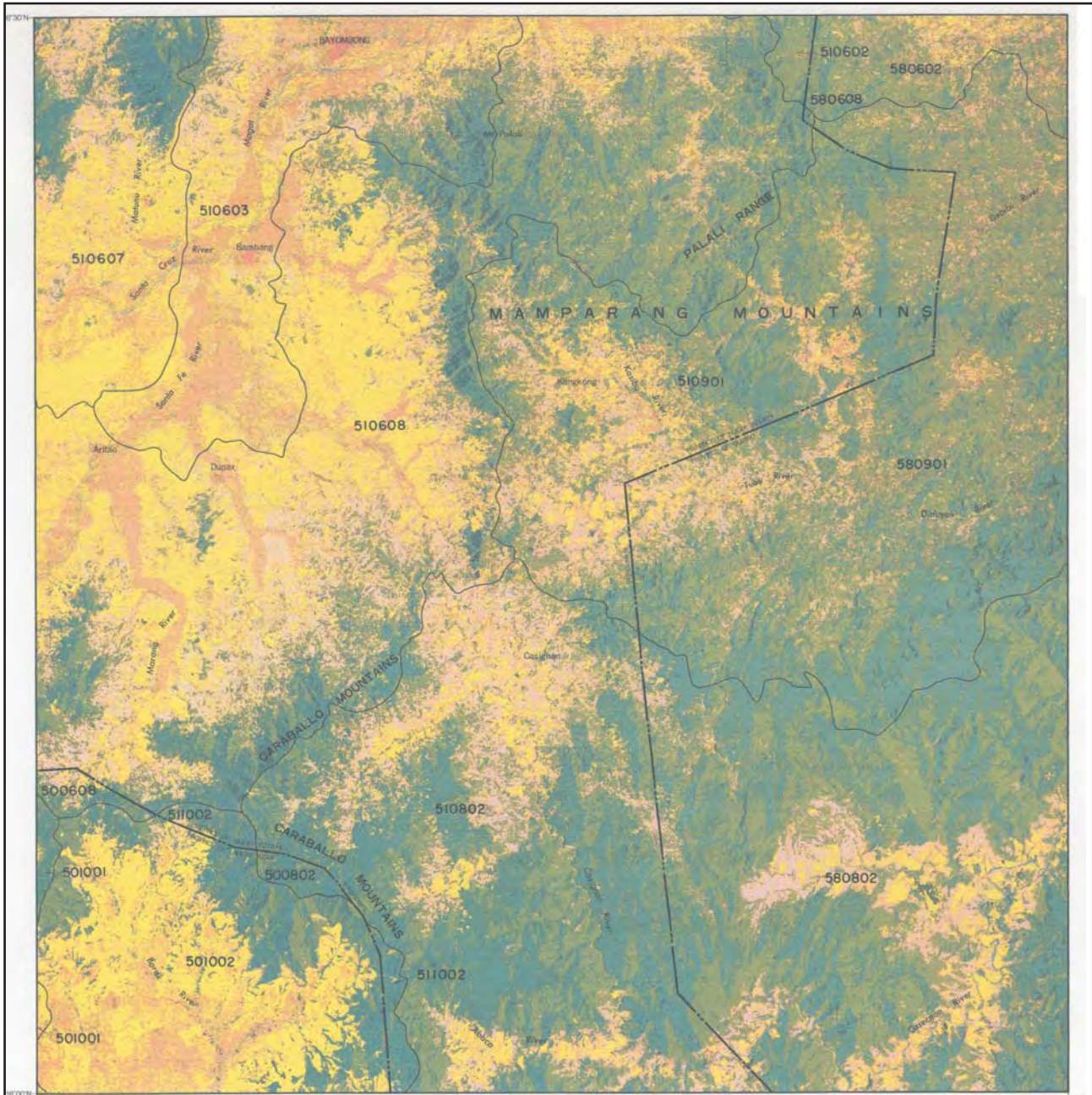
**INFORMATION SYSTEM DEVELOPMENT PROJECT
 FOR THE MANAGEMENT OF TROPICAL FOREST
 (Source: Land Use and Forest Type Map)**

LEGEND			
	Old-growth forest		Agricultural area
	Mossy forest		Bare/Rocky land
	Residual forest		Built-up area
	Sub-marginal forest		Water body
	Pine forest		Shallow coast
	Mangrove forest		Cloud
	Reproduction brush		Shadow
	Coconut plantation		Compartment
	Other plantation		Province
	Grass land		



*The Feasibility Study of the Flood Control Project
 for the Lower Cagayan River
 in the Republic of the Philippines*

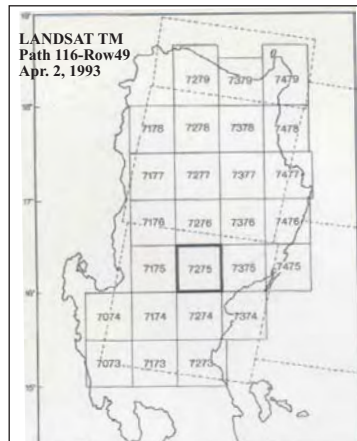
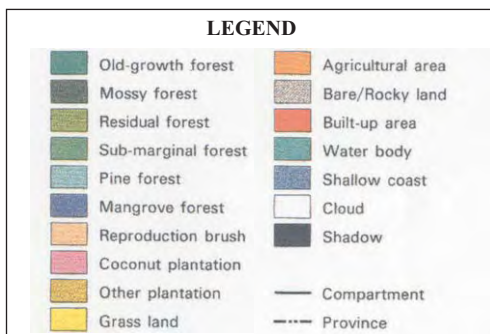
Figure
Land Use and Forest Type Map
7274 Pantabangan



JAPAN FOREST TECHNICAL ASSOCIATION (JAFTA)
with the cooperation of
DEPARTMENT OF ENVIRONMENT AND NATURAL RESOURCES (DENR)
NATIONAL MAPPING AND RESOURCE INFORMATION AUTHORITY (NAMRIA)
REMOTE SENSING AND RESOURCE DATA ANALYSIS DEPARTMENT (RSRDAD)



INFORMATION SYSTEM DEVELOPMENT PROJECT
FOR THE MANAGEMENT OF TROPICAL FOREST
(Source: Land Use and Forest Type Map)

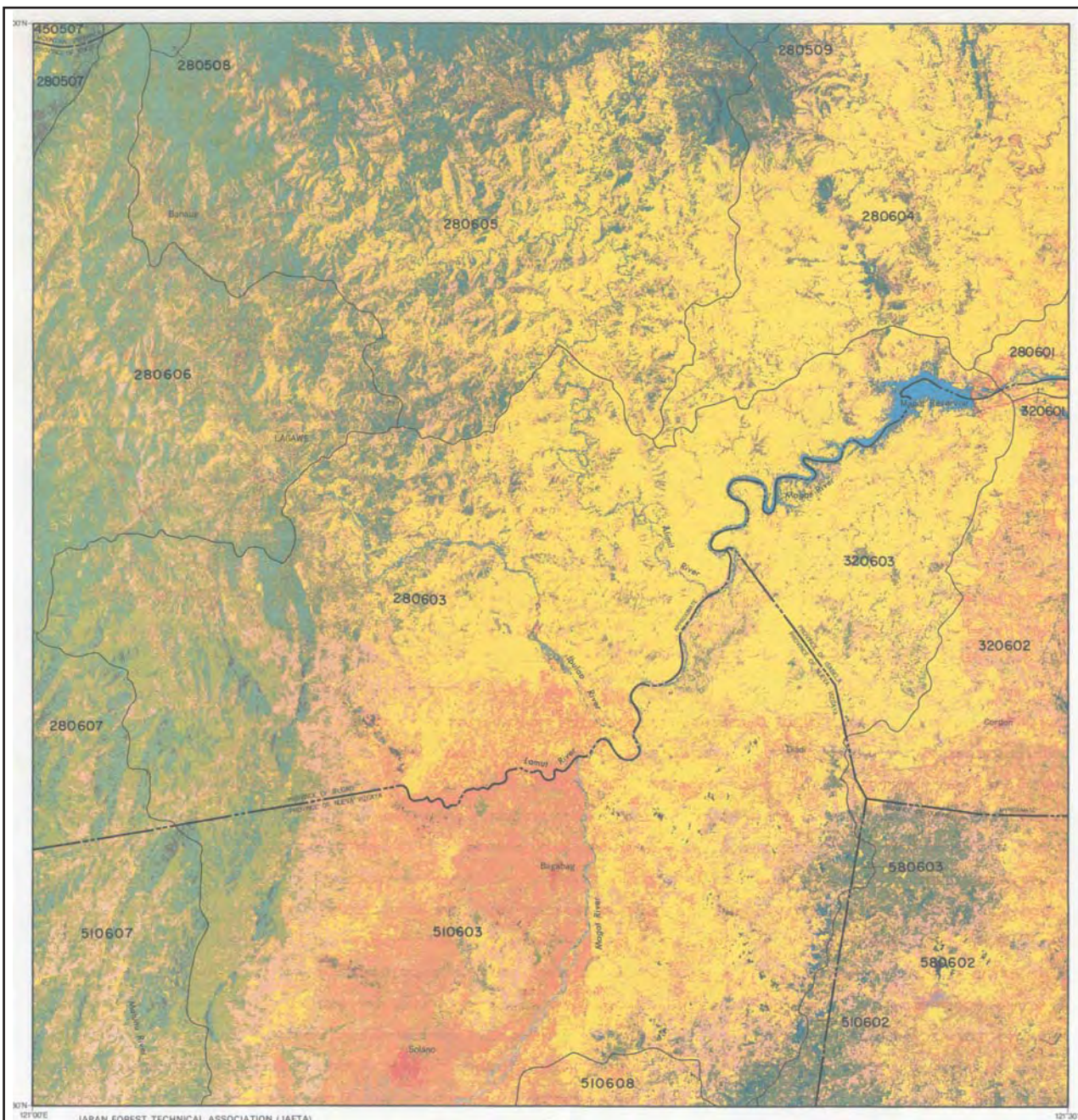


*The Feasibility Study of the Flood Control Project
for the Lower Cagayan River
in the Republic of the Philippines*

JAPAN INTERNATIONAL COOPERATION AGENCY

Figure

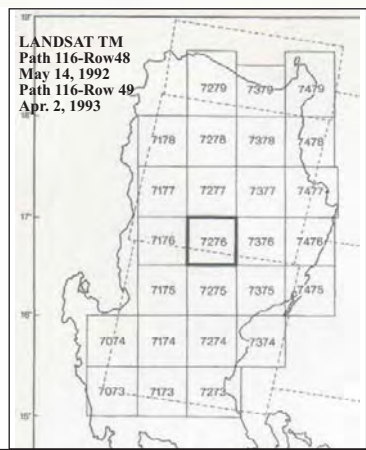
**Land Use and Forest Type Map
7275 Bayombong**



JAPAN FOREST TECHNICAL ASSOCIATION (JAFTA)
 with the cooperation of
 DEPARTMENT OF ENVIRONMENT AND NATURAL RESOURCES (DENR)
 NATIONAL MAPPING AND RESOURCE INFORMATION AUTHORITY (NAMRIA)
 REMOTE SENSING AND RESOURCE DATA ANALYSIS DEPARTMENT (RSRDAI)

**INFORMATION SYSTEM DEVELOPMENT PROJECT
 FOR THE MANAGEMENT OF TROPICAL FOREST
 (Source: Land Use and Forest Type Map)**

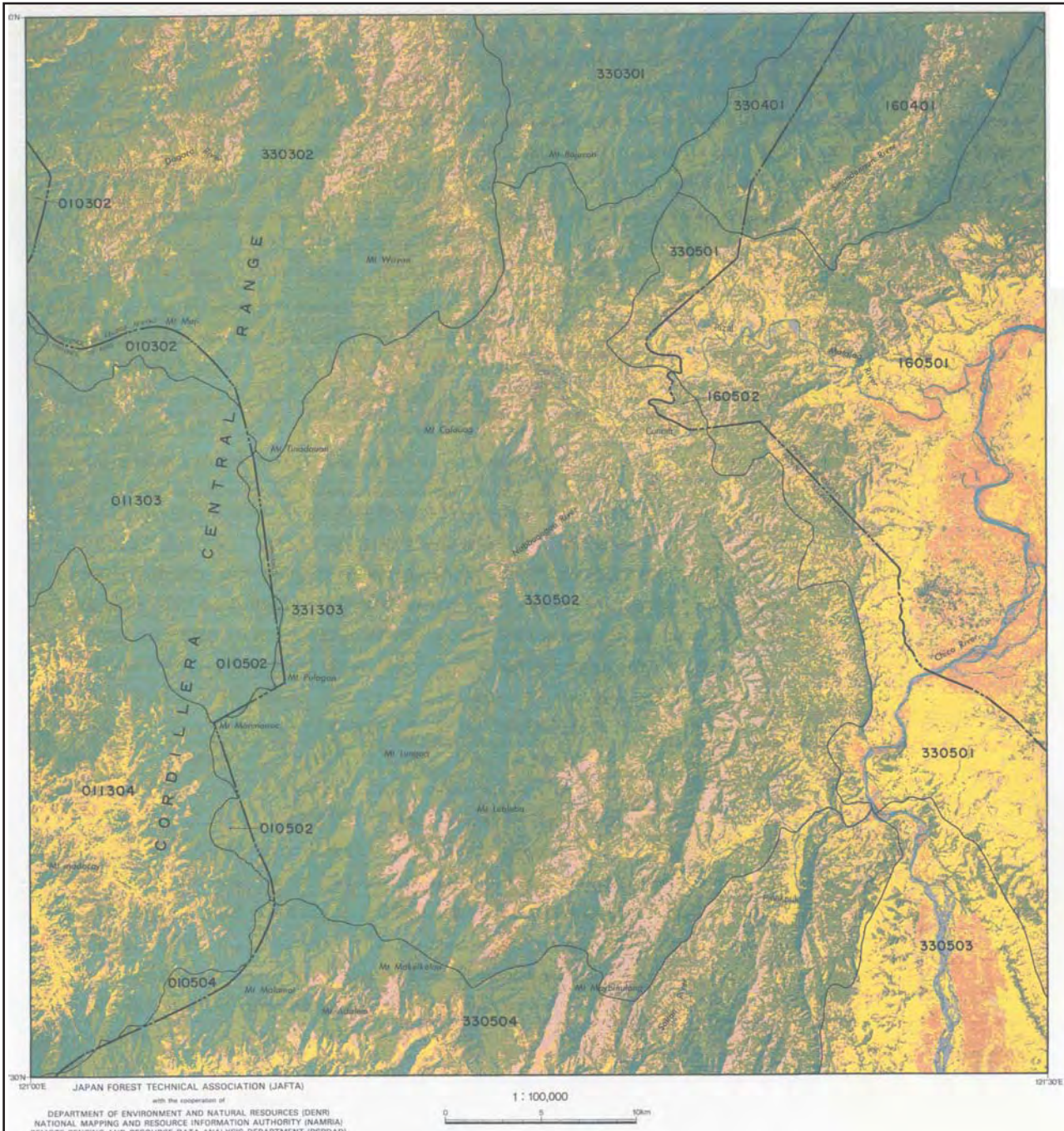
LEGEND	
	Old-growth forest
	Mossy forest
	Residual forest
	Sub-marginal forest
	Pine forest
	Mangrove forest
	Reproduction brush
	Coconut plantation
	Other plantation
	Grass land
	Agricultural area
	Bare/Rocky land
	Built-up area
	Water body
	Shallow coast
	Cloud
	Shadow
	Compartment
	Province



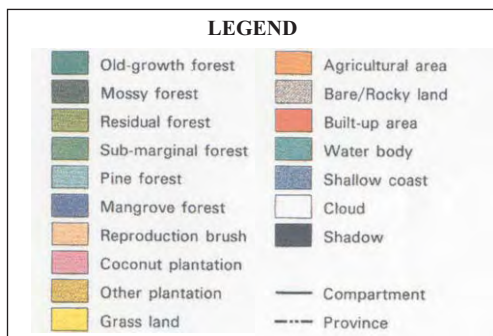
LANDSAT TM
 Path 116-Row 48
 May 14, 1992
 Path 116-Row 49
 Apr. 2, 1993

*The Feasibility Study of the Flood Control Project
 for the Lower Cagayan River
 in the Republic of the Philippines*
 JAPAN INTERNATIONAL COOPERATION AGENCY

Figure
Land Use and Forest Type Map
7276 Cordon



INFORMATION SYSTEM DEVELOPMENT PROJECT
FOR THE MANAGEMENT OF TROPICAL FOREST
(Source: Land Use and Forest Type Map)



*The Feasibility Study of the Flood Control Project
for the Lower Cagayan River
in the Republic of the Philippines*

Figure

**Land Use and Forest Type Map
7278 Tuao**

JAPAN INTERNATIONAL COOPERATION AGENCY