

2.2.3 Basic Design Drawings

Basic Design Drawings are shown in the following pages.

The major components of this project are as shown in Table 2.2.3-1.

Table 2.2.3-1 Major Components of the Project

Item		Outline	Major Works	
			Whole Project (Stage-1 to 3)	Stage-3
Road Improvement	Widening	Existing carriageway average width 6.5m is too small against the traffic which is mixed with 4-wheel and 2-wheel vehicles, and causing traffic accidents.	Road Length 55.98km (Sta. 0+000~55+980) (4-Lane: 1.800km, 2-Lane: 54.180km)	Road Length 11.2km (Sta. 1+900~13+100) 2-Lane: 11.2km
	Grade Rise	Existing road average grade is only 30cm above the flood in 2000. The flood overflowed at 3 sections totally 1,100m	Almost all sections will be grade raised.	Almost all sections will be up-graded.
	Pavement	6.5m wide carriageway was paved. Pavement was damaged by floods.	Pavement on carriageway, sidewalk and shoulder for 55.98 km.	Pavement on carriageway, sidewalk and shoulder for 11.2 km
Widening of Road Shoulder	Market Area	Lack of parking lane along markets is causing traffic jams.	3 nos.	1 nos.
	Bus Stop / Evacuation Space	Bus stop space and evacuation space for livestock during floods.	20 nos.	5 nos.
	School / Hospital	Groups of student pedestrians are causing traffic jams.	School : 31 nos. Hospital: 9 nos.	School : 5 nos. Hospital : 2 nos.
Bridge Construction		Bailey bridges are narrow and causing traffic jams.	3 bridges, 240.6m (68.8+103.0+68.8m) (2 replacement, 1 new)	—
Culvert		Existing 4 culverts are clogged with mud. Inadequate opening is causing flood level high and disturbing water fertilizes farms.	9 nos.	—
			Pipe culvert: 2 nos.	—
			Box culvert: 7 nos.	—
			(Total Length: Pipe culvert= 50.1m, Box culvert= 107.1m)	—
Road Drainage Facility		Lack of road drainage facility is causing traffic jams and traffic accidents.	Side Ditch: 2,230m Criss Pipe: 5,045m	Side Ditch: 220m —
Revetment/Riverbed Protection	Revetment	Slope erosions are occurring at inlet/outlet of openings.		—
	Riverbed Protection	Riverbed scouring is occurring at inlet/outlet of openings.	Bridge: 3 nos. Culvert: 9 nos.	—
Measures for Slope Erosion	Greenbelt	Slope erosion is occurring where current hits, road bends and bridge exists and wave is strong.	Length: 2,800m	—
	Wet Masonry	Slope around culverts are being eroded.	Length: 1,060m	—
Measures for Soft Ground	Replacement by Qualified Soil	Embankment for road widening on soft ground will cause unequal settlement.	Mekong side: 16.52km, Colmatage side: 44.96km	Mekong side: 10.15km, Colmatage side: 9.86km
	Replacement by Sand	Underwater soft soil will be replaced by sand	Mekong side: 0.80km, Colmatage: 1.72km	Mekong side: 1.05km, Colmatage: 1.34km
Intersection Improvement		Traffic jams and traffic accidents are occurring frequent at Chbar Ampov Intersection. Traffic jams are occurring at Tiger Beer Intersection.	2 locations Chbar Ampov Intersection and Tiger Beer Intersection	1 location Tiger Beer Intersection
Ancillary Facilities	Retaining Wall	Instead of embankment slope, retaining wall will be installed to minimize resettlement. (Sta. 0+300~Sta. 1+000)	Masonry Wall: 1,635m, RCL Retaining Wall: 1,166m	—
	Road Marking & Traffic Sign	Road marking and traffic signs will be installed for the traffic safety.	Centerline, lane line & edge line and 39 crosswalks Regulatory sign: 20 nos., Warnig sign: 112 nos., Guide sign: 21 nos.	Centerline, lane line & edge line and 14 Crosswalks Warnig sign: 22 nos.
	Median Strip	Median strip will be installed for traffic safety.	Total length: 1,688m	—
	Curb	Curb will be installed for traffic safety.	Total length: 16,800m	Total length: 8,304m
	Guardrail	Guardrail will be installed at approach of bridges and culverts.	Mekong side: 180m, Colmatage side: 180m	—
	Guide Post	Guide posts will be installed at curbs, culverts and at embankments are higher than 5m.	1,010 nos.	190 nos.

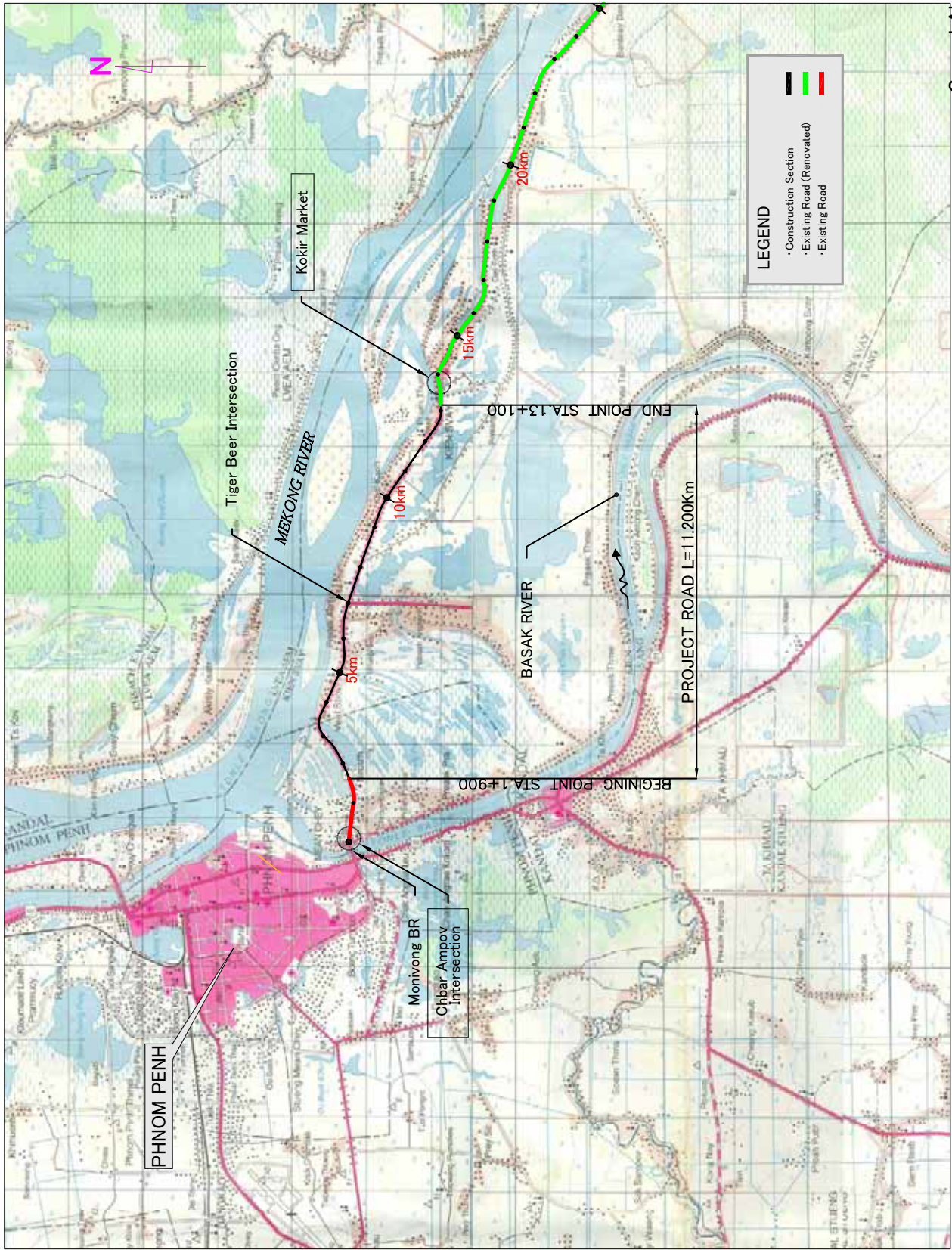
IMPLEMENTATION REVIEW STUDY
ON
THE PROJECT FOR IMPROVEMENT
OF NATIONAL ROAD NO.1 (PHNOM PENH-NEAK LOEUNG SECTION)
IN
THE KINGDOM OF CAMBODIA

JAPAN INTERNATIONAL COOPERATION AGENCY
KATAHIRA & ENGINEERS INTERNATIONAL

CONTENTS OF DRAWINGS

1) LOCATION MAP	G - 1
2) KEY PLAN	G - 2
3) IP COORDINATE	G - 3
4) TYPICAL CROSS SECTIONS	G - 4
5) PLAN & PROFILE	PL - 1 ~ 17
6) CROSS SECTION	CS - 1 ~ 40
7) ROAD DRAINAGE	DR - 1
8) REPLACEMENT OF EXISTING GROUND	M - 1
9) DETAILS OF BUS BAY	M - 2
10) WIDENING OF SIDEWALK (SHOULDER) (MARKET, SCHOOL & HEALTH CENTER)	M - 3
11) DETAILS OF CURB (LOCATIONAL)	M - 4
13) DETAILS OF RUMBLE STRIPS	M - 5
14) SCHEDULE OF ROAD SIGNS	M - 6
15) DETAILS OF GUIDE POST AND KILOMETER POST	M - 7
16) DETAILS OF CONNECTING ROADS	M - 8 ~ 9
17) DETAILS OF TRUCK SCALE	M - 10
18) STANDARD PAVEMENT AND PEDESTRIAN CROSSING	M - 11

TOTAL 73 Sheets



MINISTRY OF
PUBLIC WORKS AND TRANSPORT
(MPWT)

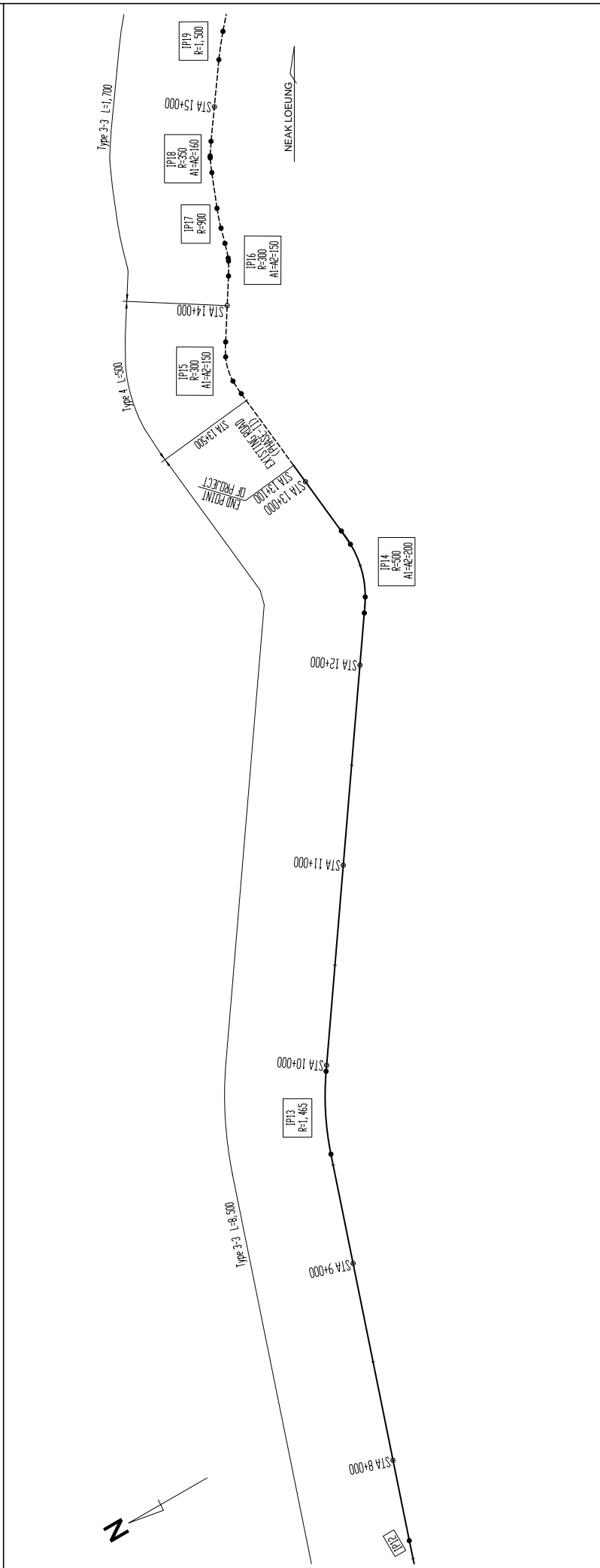
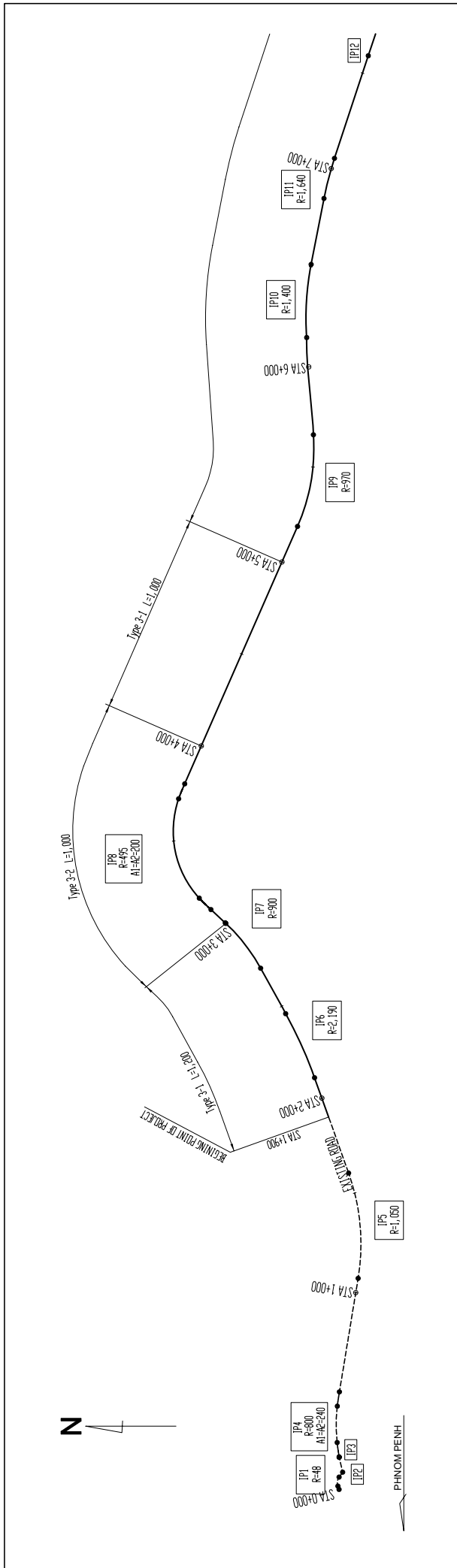
IMPLEMENTATION REVIEW STUDY ON THE PROJECT
FOR THE IMPROVEMENT OF NATIONAL ROAD NO.1
(PHNOM PENH-NEAK LOEUNG SECTION)
IN THE KINGDOM OF CAMBODIA

JAPAN INTERNATIONAL COOPERATION AGENCY
KATAHIRA & ENGINEERS INTERNATIONAL

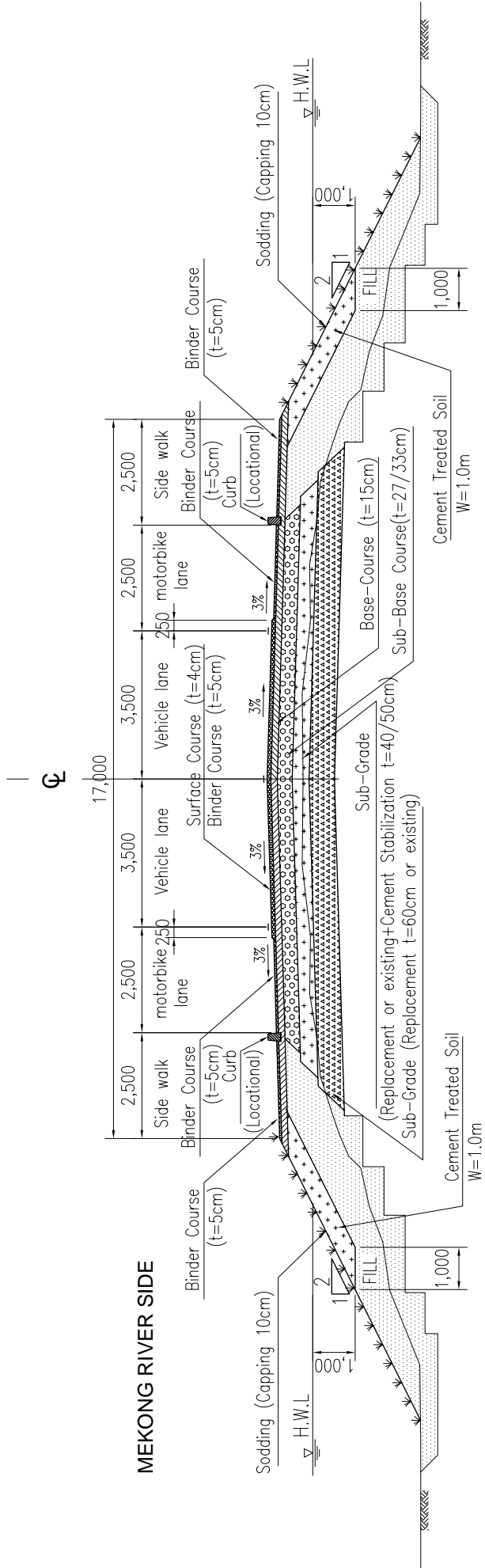
TITLE : PROJECT LAYOUT

SCALE
1/5,000

Drawing No.
Sheet No.
G-1



MINISTRY OF PUBLIC WORKS AND TRANSPORT (MPWT)	IMPLEMENTATION REVIEW STUDY ON THE PROJECT FOR THE IMPROVEMENT OF NATIONAL ROAD NO.1 (PHNOM PENH-NEAK LOEUNG SECTION) IN THE KINGDOM OF CAMBODIA	JAPAN INTERNATIONAL COOPERATION AGENCY KATAHIRA & ENGINEERS INTERNATIONAL	TITLE : KEY PLAN	SCALE	Drawing No.
				1/10,000	Sheet No. G-2



Type 3 2-LANES SECTION (STA. 1+900 ~ 13+100)

PAVEMENT STRUCTURE COMPOSITION

TYPE	STATION	SURFACE COURSE	BINDER COURSE	BASE COURSE	SUB-BASE COURSE	SUB GRADE CEMENT REPLACEMENT
3-1	1+900 to 3+000	40	50	150	330	500
3-2	3+000 to 4+000	40	50	150	330	400
3-1	4+000 to 5+000	40	50	150	330	500
3-3	5+000 to 13+100	40	50	150	270	400

MINISTRY OF
PUBLIC WORKS AND TRANSPORT
(MPWT)

IMPLEMENTATION REVIEW STUDY ON THE PROJECT
FOR THE IMPROVEMENT OF NATIONAL ROAD NO.1
(PHNOM PENH-NEAK LOEUNG SECTION)
IN THE KINGDOM OF CAMBODIA

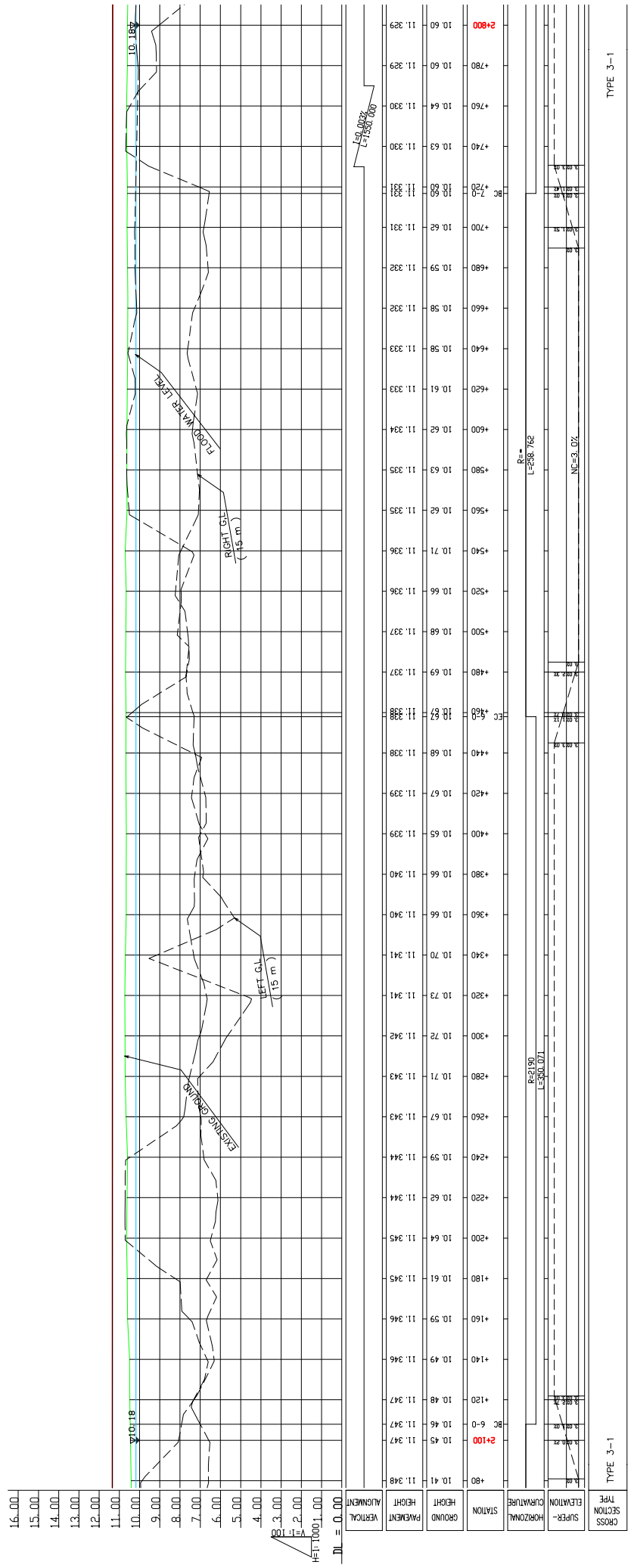
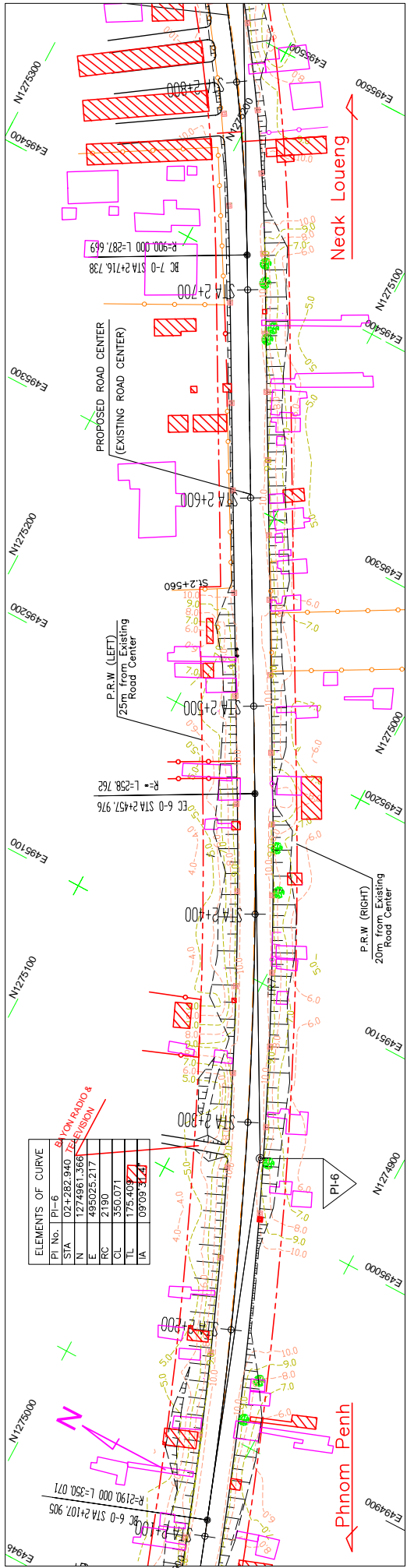
JAPAN INTERNATIONAL COOPERATION AGENCY
KATAHIRA & ENGINEERS INTERNATIONAL

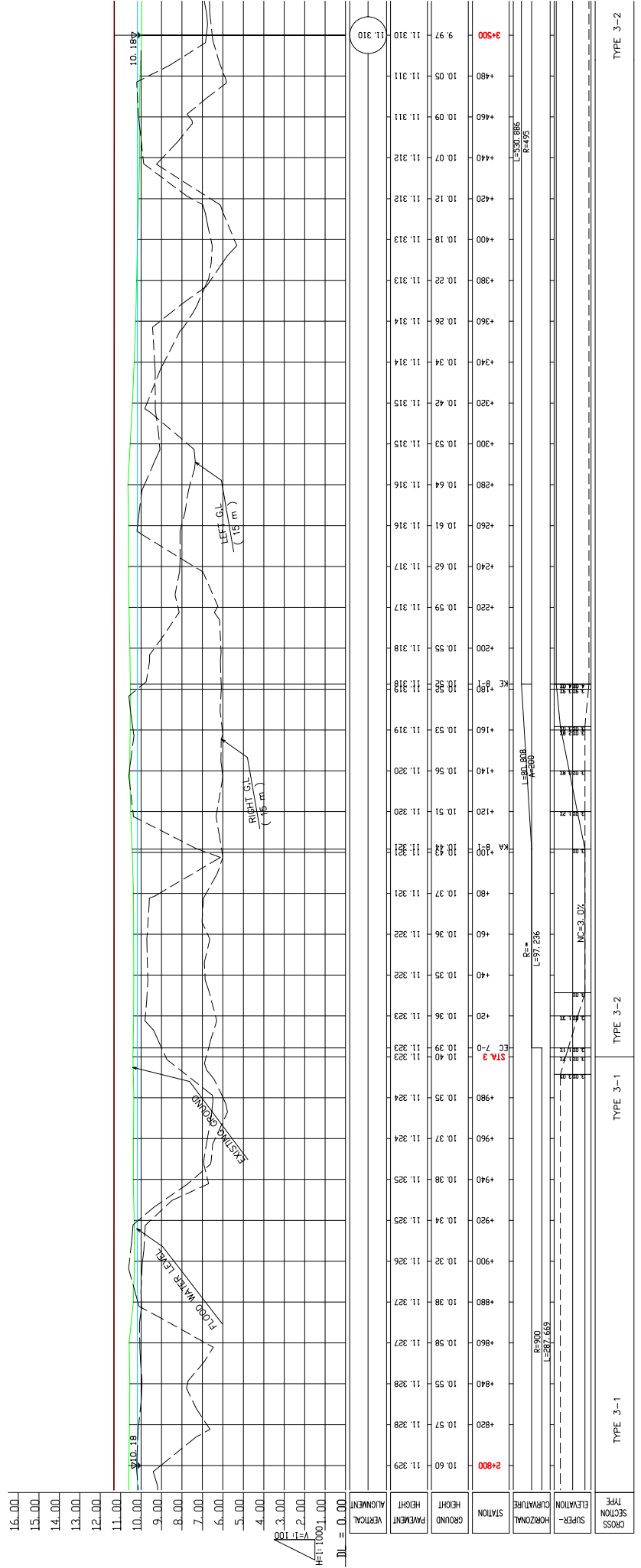
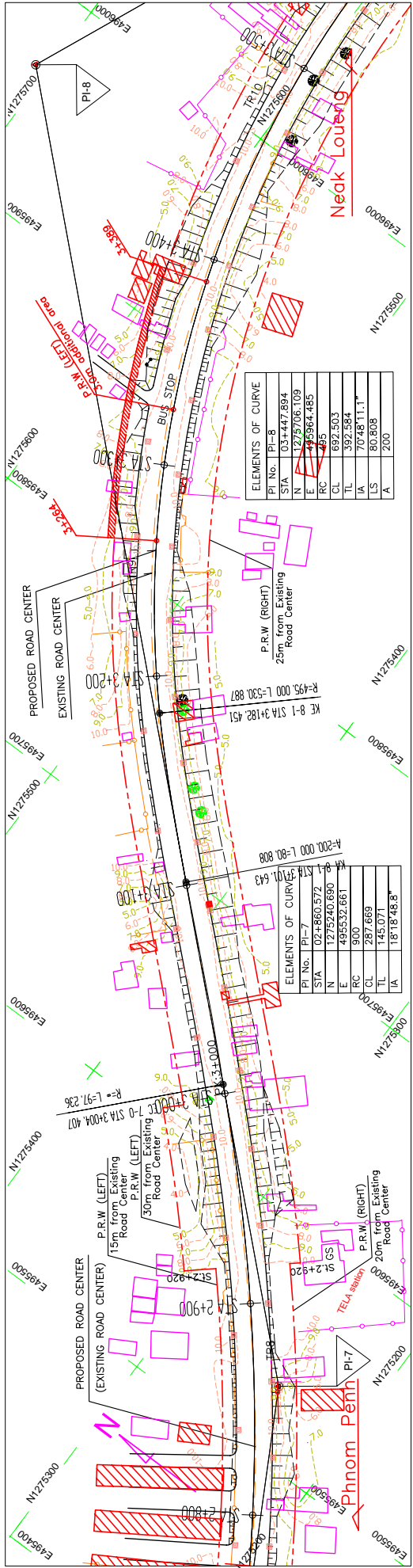
TITLE:
TYPICAL CROSS SECTION

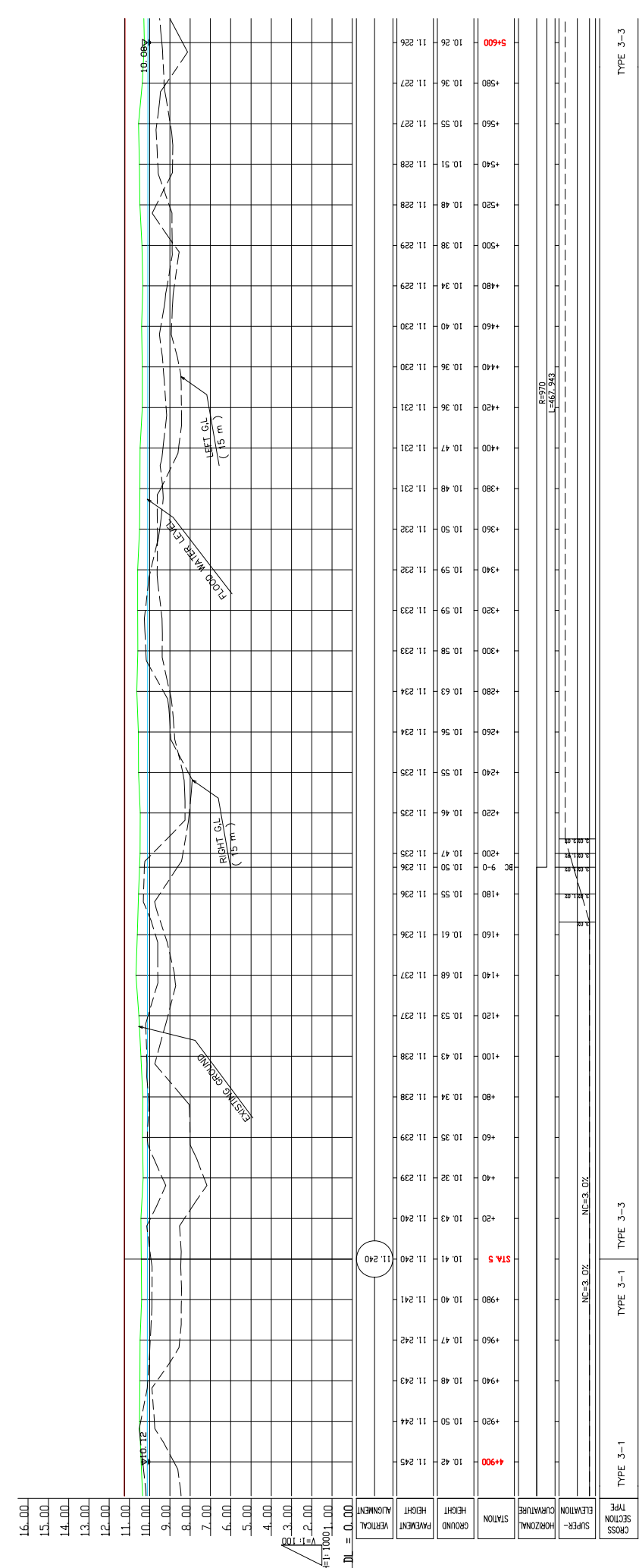
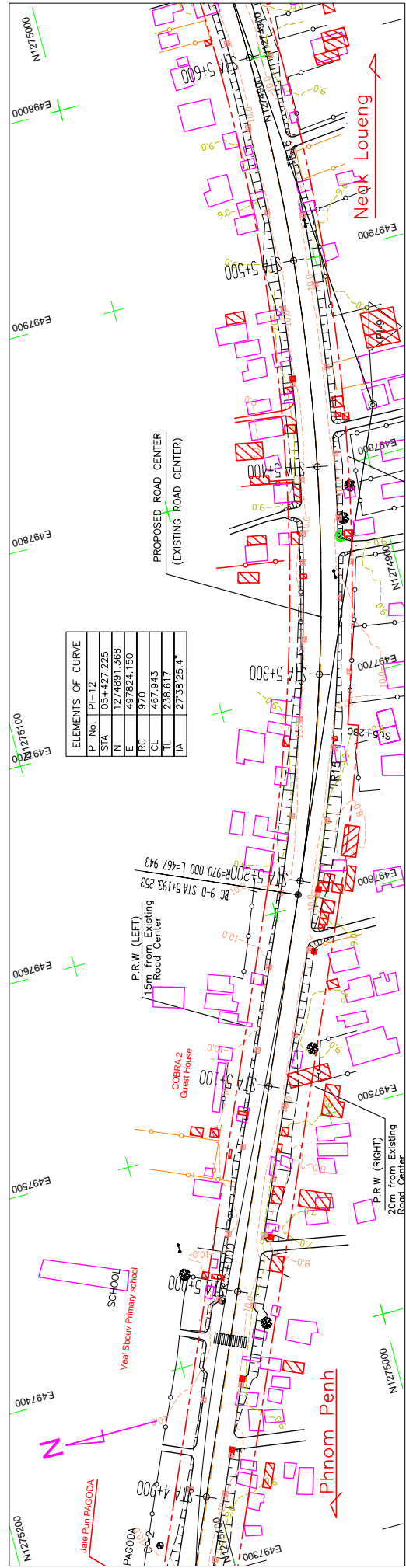
SCALE
1:50

Drawing No.

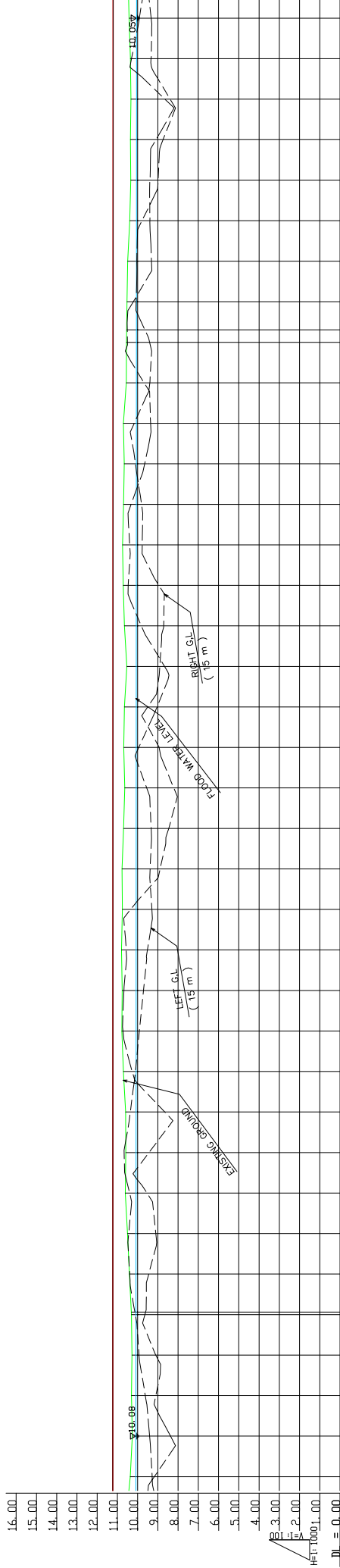
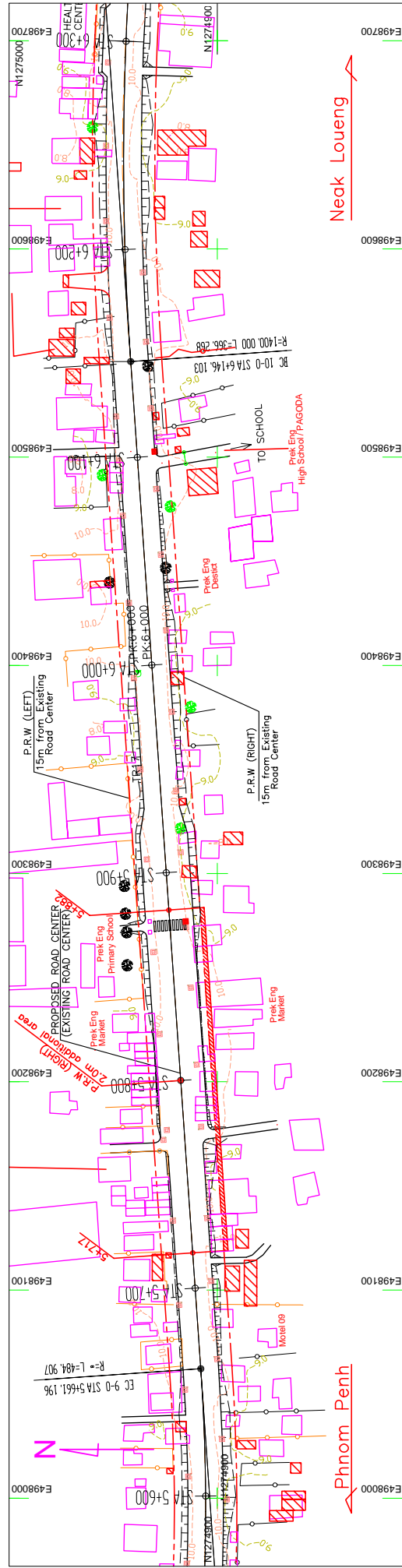
Sheet No.
G-4







CROSS SECTION TYPE	TYPE 3-1		TYPE 3-3		TYPE 3-3
	TYPE 3-1	TYPE 3-3	TYPE 3-1	TYPE 3-3	
MINISTRY OF PUBLIC WORKS AND TRANSPORT (MPWT)	IMPLEMENTATION REVIEW STUDY ON THE PROJECT FOR THE IMPROVEMENT OF NATIONAL ROAD NO.1 (PHNOM PENH-NEAK LOEUNG SECTION) IN THE KINGDOM OF CAMBODIA				JAPAN INTERNATIONAL COOPERATION AGENCY KATAHIRA & ENGINEERS INTERNATIONAL
TITLE :	PLAN AND PROFILE (STA. 4+900 - STA. 5+600)				
SCALE	H=1/1000 V=1/100				Drawing No.
					Sheet No. PL-6



CROSS SECTION TYPE	STATION	GROUND HEIGHT	PAVEMENT HEIGHT	ALIGNMENT
	11.227	10.36	11.226	11.227
	11.226	10.28	11.226	11.226
	11.225	10.40	11.225	11.225
	11.224	10.61	11.224	11.224
	11.223	10.58	11.223	11.223
	11.222	10.70	11.222	11.222
	11.221	10.78	11.221	11.221
	11.220	10.75	11.221	11.221
	11.219	10.63	11.219	11.219
	11.218	10.65	11.218	11.218
	11.217	10.71	11.217	11.217
	11.216	10.66	11.216	11.216
	11.215	10.70	11.215	11.215
	11.214	10.54	11.214	11.214
	11.213	10.49	11.213	11.213
	11.212	10.33	11.212	11.212
	11.211	10.35	11.211	11.211
	11.210	10.42	11.211	11.211

MINISTRY OF PUBLIC WORKS AND TRANSPORT (MPWT)

IMPLEMENTATION REVIEW STUDY ON THE PROJECT FOR THE IMPROVEMENT OF NATIONAL ROAD NO.1 (PHNOM PENH-NEAK LOEUNG SECTION) IN THE KINGDOM OF CAMBODIA

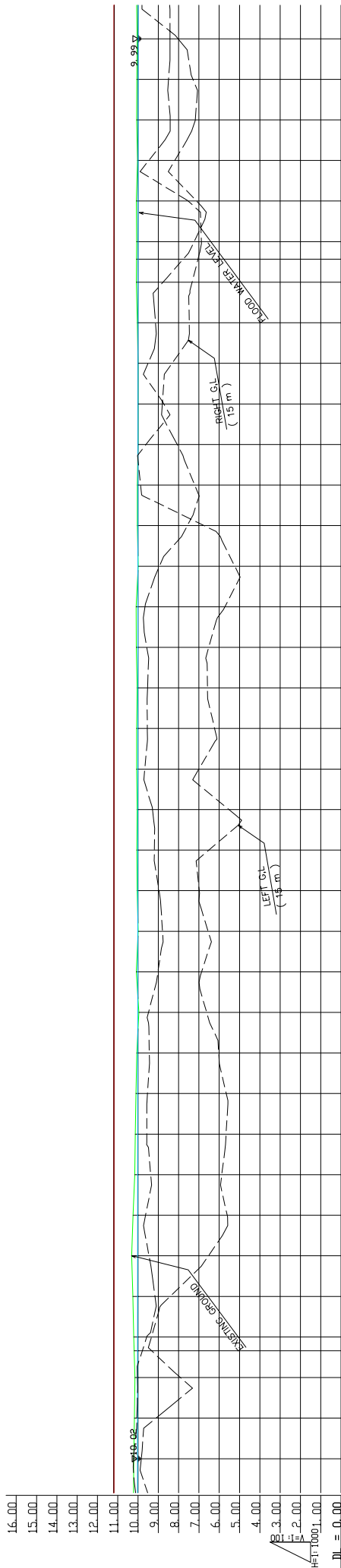
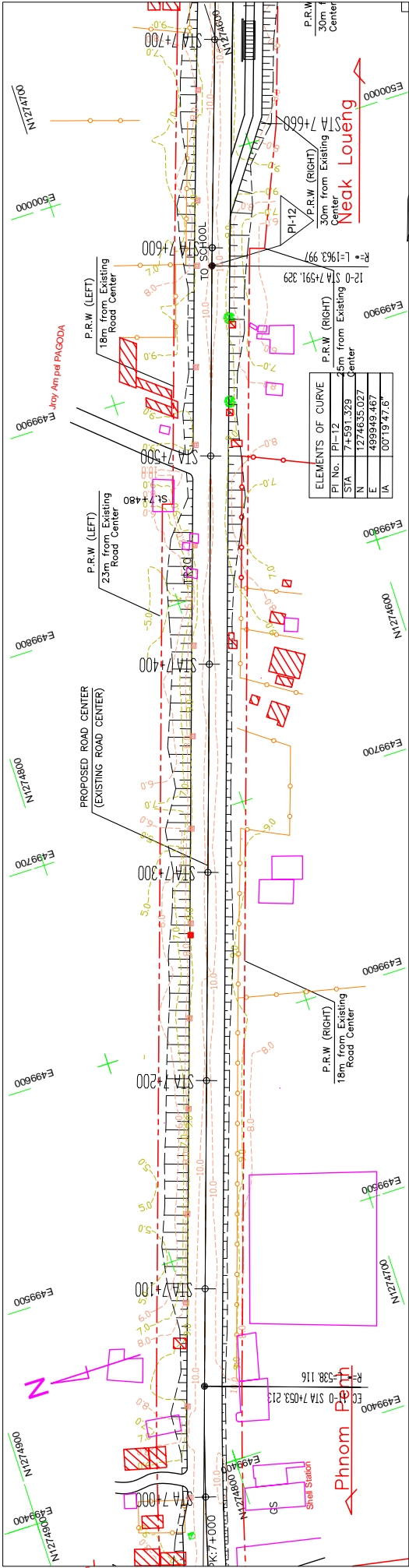
JAPAN INTERNATIONAL COOPERATION AGENCY KATAHIRA & ENGINEERS INTERNATIONAL

TITLE : PLAN AND PROFILE (STA.5+600—STA.6+300)

SCALE H=1/1000 V=1/100

Drawing No. Sheet No. PL-7

TYPE 3-3



CROSS SECTION TYPE	ELEVATION	STATION	GROUND HEIGHT	PAVEMENT HEIGHT	ALIGNMENT VERTICAL
TYPE 3-3	11.195	10 21	11.194	11.194	0.00
	11.194	10 18	11.194	11.194	0.00
	11.194	10 15	11.194	11.194	0.00
	11.194	10 19	11.194	11.194	0.00
	11.194	10 21	11.194	11.194	0.00
	11.193	10 25	11.193	11.193	0.00
	11.192	10 16	11.192	11.192	0.00
	11.192	10 24	11.192	11.192	0.00
	11.191	10 10	11.191	11.191	0.00
	11.190	10 06	11.190	11.190	0.00
TYPE 3-3	9.96	11 190	11.189	11.189	1.22
	9.96	10 08	11.189	11.189	1.22
	9.96	11 189	11.189	11.189	1.22
	9.96	10 04	11.188	11.188	1.22
	9.96	11 188	11.188	11.188	1.22
	9.96	10 06	11.188	11.188	1.22
	9.96	11 188	11.188	11.188	1.22
	9.96	10 09	11.185	11.185	1.22
	9.96	11 185	11.185	11.185	1.22
	9.96	10 03	11.184	11.184	1.22
TYPE 3-3	11.184	10 03	11.184	11.184	0.00
	11.184	10 03	11.184	11.184	0.00
	11.184	10 00	11.183	11.183	0.00
	11.183	10 00	11.183	11.183	0.00
	11.183	10 00	11.183	11.183	0.00
	11.182	10 03	11.182	11.182	0.00
	11.182	10 08	11.182	11.182	0.00
	11.182	10 07	11.182	11.182	0.00
	11.181	10 07	11.181	11.181	0.00
	11.181	10 08	11.181	11.181	0.00
TYPE 3-3	11.180	10 02	11.180	11.180	0.00
	11.180	10 07	11.180	11.180	0.00
	11.180	10 06	11.180	11.180	0.00
	11.180	10 06	11.180	11.180	0.00
	11.179	10 04	11.179	11.179	0.00

MINISTRY OF PUBLIC WORKS AND TRANSPORT (MPWT)

IMPLEMENTATION REVIEW STUDY ON THE PROJECT FOR THE IMPROVEMENT OF NATIONAL ROAD NO.1 (PHNOM PENH-NEAK LOEUNG SECTION) IN THE KINGDOM OF CAMBODIA

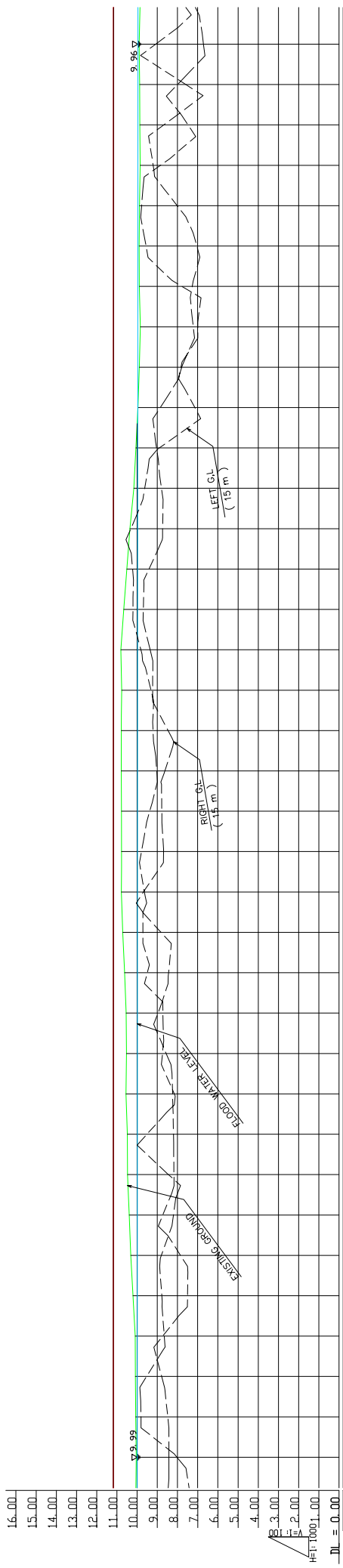
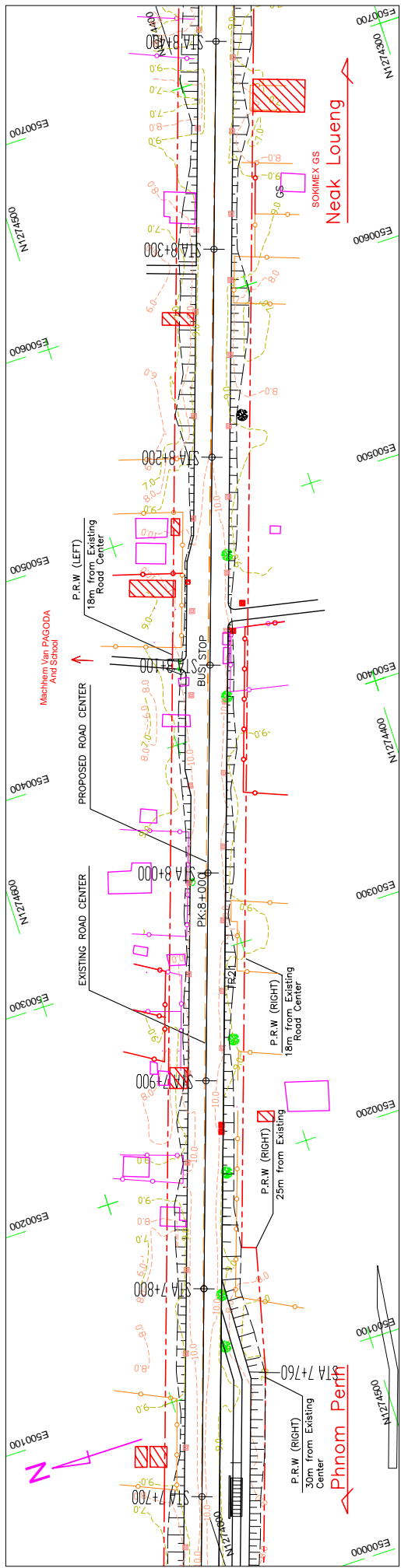
JAPAN INTERNATIONAL COOPERATION AGENCY KATAHIRA & ENGINEERS INTERNATIONAL

TITLE : PLAN AND PROFILE (STA.7+000—STA.7+700)

SCALE H=1/1000 V=1/100

Drawing No. Sheet No. PL-9

TYPE 3-3



CROSS SECTION TYPE	SUPER-ELEVATION	HORIZONTAL	STATION	GROUND HEIGHT	PAVEMENT HEIGHT	VERTICAL ALIGNMENT
			7+00	11.179		0.00
			7+20	11.179		0.00
			7+40	11.178		0.00
			7+60	11.178		0.00
			7+80	11.177		0.00
			8+00	11.174		0.00
			8+20	11.176		0.00
			8+40	11.176		0.00
			8+60	11.175		0.00
			8+80	11.175		0.00
			9+00	11.175		0.00
			9+20	11.174		0.00
			9+40	11.174		0.00
			9+60	11.173		0.00
			9+80	11.173		0.00
			10+00	11.170		0.00
			10+20	11.170		0.00
			10+40	11.171		0.00
			10+60	11.171		0.00
			10+80	11.171		0.00
			11+00	11.170		0.00
			11+20	11.170		0.00
			11+40	11.169		0.00
			11+60	11.169		0.00
			11+80	11.168		0.00
			12+00	11.168		0.00
			12+20	11.167		0.00
			12+40	11.167		0.00
			12+60	11.166		0.00
			12+80	11.166		0.00
			13+00	11.165		0.00
			13+20	11.165		0.00
			13+40	11.164		0.00
			13+60	11.164		0.00
			13+80	11.164		0.00
			14+00	11.163		0.00

MINISTRY OF PUBLIC WORKS AND TRANSPORT (MPWT)

IMPLEMENTATION REVIEW STUDY ON THE PROJECT FOR THE IMPROVEMENT OF NATIONAL ROAD NO.1 (PHNOM PENH-NEAK LOEUNG SECTION) IN THE KINGDOM OF CAMBODIA

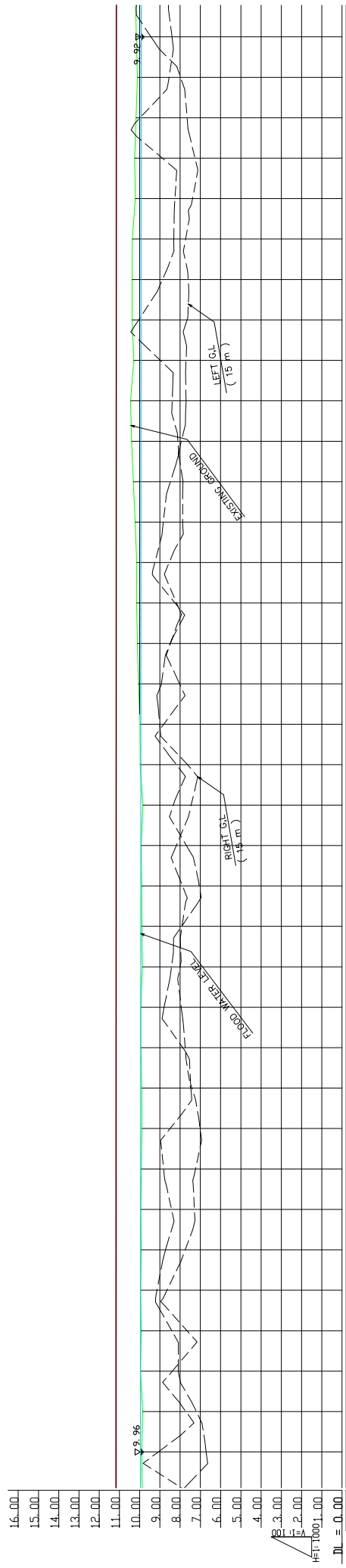
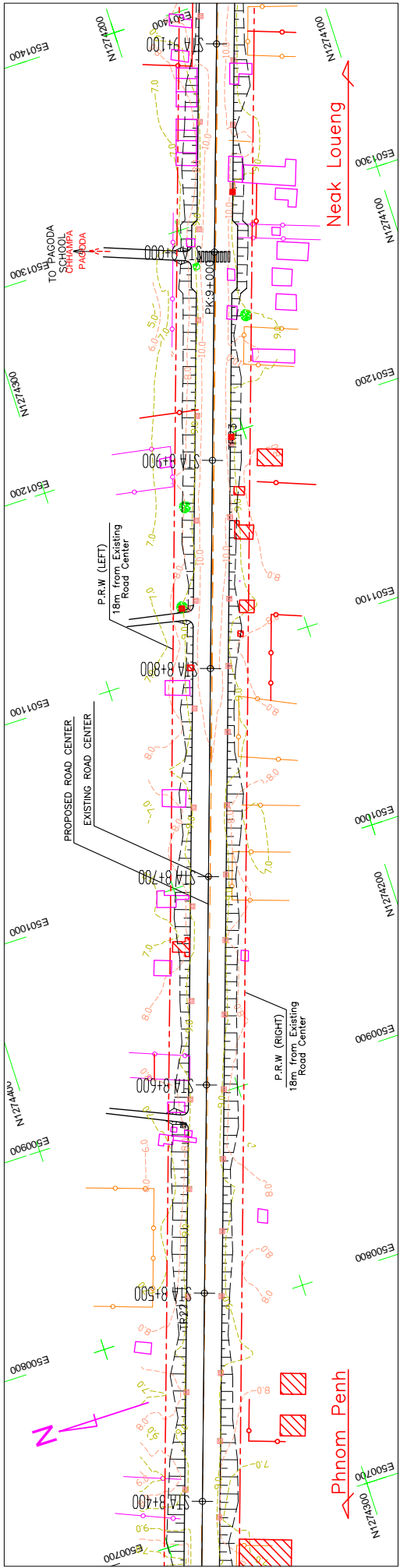
JAPAN INTERNATIONAL COOPERATION AGENCY KATAHIRA & ENGINEERS INTERNATIONAL

TITLE : PLAN AND PROFILE (STA.7+700 – STA.8+400)

SCALE: H=1/1000, V=1/100

Drawing No. Sheet No. PL-10

TYPE 3-3



CROSS SECTION TYPE	SUPER-ELEVATION	HORIZONTAL	STATION	GROUND HEIGHT	PAVEMENT HEIGHT	ALIGNMENT VERTICAL
			8+400	9.90	11.163	
				9.85	11.163	
				9.96	11.162	
				9.92	11.162	
				9.95	11.161	
				9.92	11.161	
				9.94	11.161	
				9.91	11.160	
				9.89	11.160	
				9.90	11.159	
				9.94	11.159	
				9.89	11.158	
				9.86	11.158	
				9.89	11.157	
				9.92	11.157	
				9.84	11.156	
				9.97	11.156	
				9.98	11.155	
				9.76	11.155	
				9.80	11.154	
				9.82	11.154	
				9.14	11.153	
				9.22	11.153	
				9.29	11.151	
				9.37	11.151	
				9.37	11.150	
				9.36	11.150	
				9.20	11.149	
				9.24	11.149	
				9.18	11.148	
				9.11	11.148	
				9.16	11.147	
				9.10	11.147	

MINISTRY OF PUBLIC WORKS AND TRANSPORT (MPWT)

IMPLEMENTATION REVIEW STUDY ON THE PROJECT FOR THE IMPROVEMENT OF NATIONAL ROAD NO.1 (PHNOM PENH-NEAK LOEUNG SECTION) IN THE KINGDOM OF CAMBODIA

JAPAN INTERNATIONAL COOPERATION AGENCY KATAHIRA & ENGINEERS INTERNATIONAL

TITLE : PLAN AND PROFILE (STA.8+400 – STA.9+100)

SCALE: H=1/1000, V=1/100

Drawing No. _____

Sheet No. PL-11

TYPE 3--3

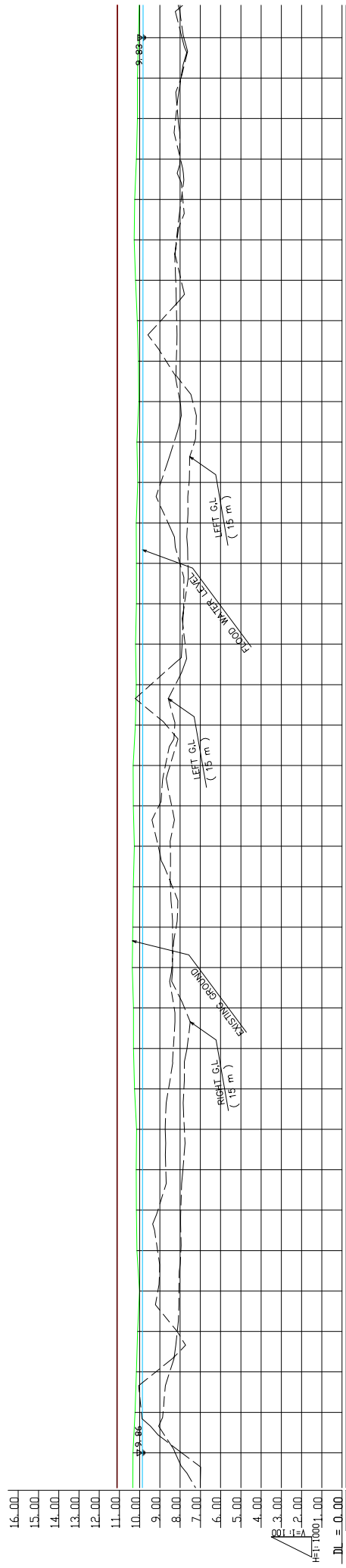
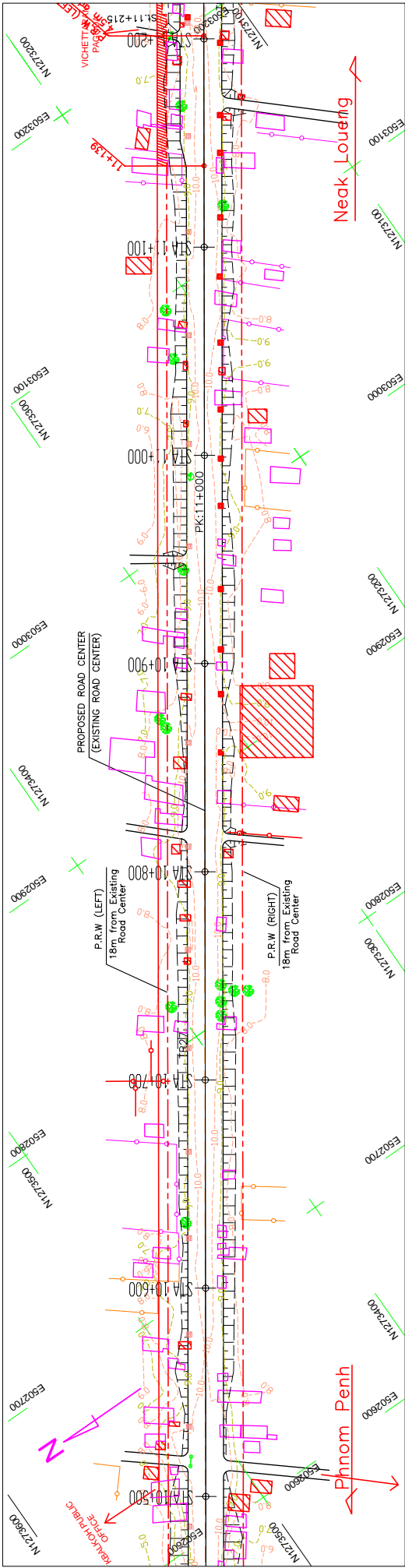
TYPE 3--3

NC=3.0%

NC=3.0%

NC=3.0%

R= L=1363.997



CROSS SECTION TYPE	STATION	GROUND HEIGHT	PAVEMENT HEIGHT	ALIGNMENT VERTICAL
	10+500	10.33	11.16	
	10+520	10.23	11.115	
	10+540	10.16	11.115	
	10+560	10.10	11.115	
	10+580	10.01	11.114	
	10+600	10.13	11.114	
	10+620	10.16	11.113	
	10+640	10.17	11.113	
	10+660	10.15	11.112	
	10+680	10.25	11.112	
	10+700	10.30	11.111	
	10+720	10.30	11.111	
	10+740	10.36	11.110	
	10+760	10.34	11.110	
	10+780	10.31	11.110	
	10+800	10.26	11.109	
	10+820	10.31	11.109	
	10+840	10.32	11.108	
	10+860	10.21	11.108	
	10+880	10.17	11.107	
	10+900	10.20	11.107	
	10+920	10.16	11.106	
	10+940	10.16	11.106	
	10+960	10.17	11.106	
	10+980	10.09	11.105	
	10+1000	10.13	11.105	
	10+1020	10.27	11.102	
	10+1040	10.04	11.104	
	10+1060	10.06	11.104	
	10+1080	10.12	11.103	
	10+1100	10.20	11.103	
	10+1120	10.24	11.102	
	10+1140	10.11	11.101	
	10+1160	10.11	11.101	
	10+1180	10.11	11.101	
	10+1200	10.06	11.100	
	10+1220	10.11	11.100	
	10+1240	10.11	11.100	
	10+1260	10.06	11.100	
	10+1280	10.06	11.100	
	10+1300	10.06	11.100	

MINISTRY OF PUBLIC WORKS AND TRANSPORT (MPWT)

IMPLEMENTATION REVIEW STUDY ON THE PROJECT FOR THE IMPROVEMENT OF NATIONAL ROAD NO.1 (PHNOM PENH-NEAK LOEUNG SECTION) IN THE KINGDOM OF CAMBODIA

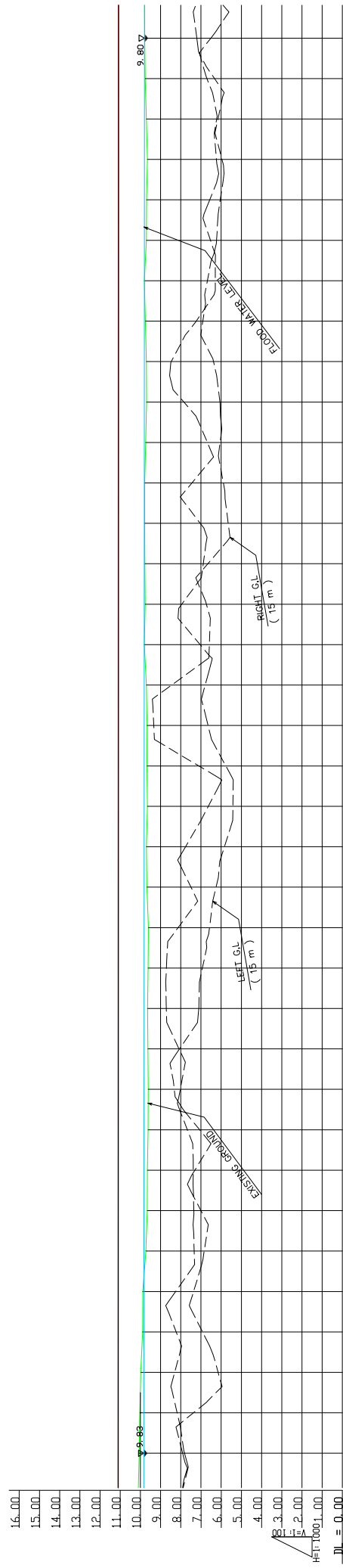
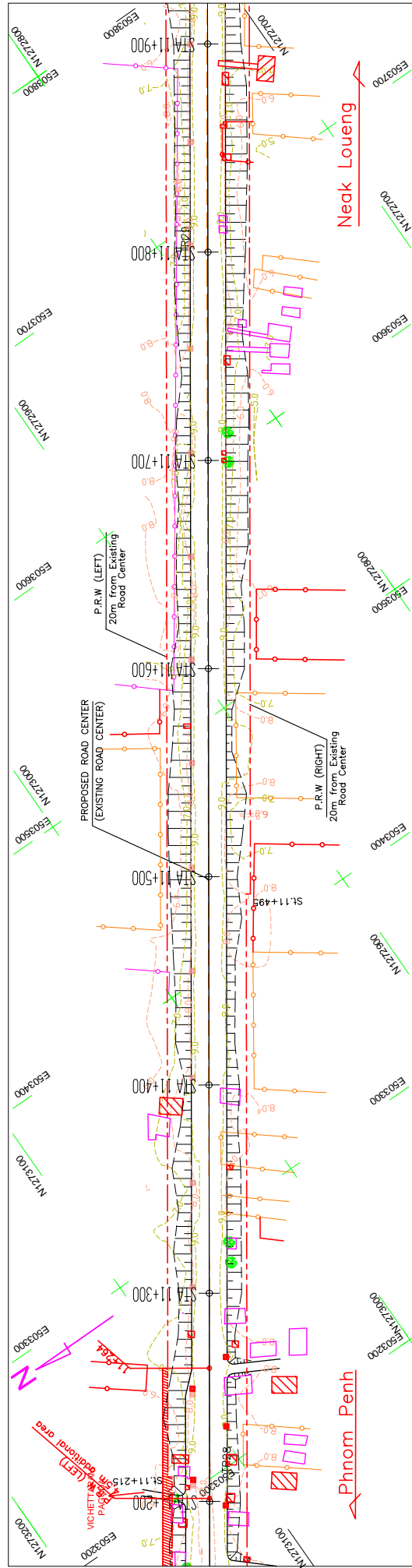
JAPAN INTERNATIONAL COOPERATION AGENCY KATAHIRA & ENGINEERS INTERNATIONAL

TITLE : PLAN AND PROFILE (STA.10+500 – STA.11+200)

SCALE H=1/1000 V=1/100

Drawing No. Sheet No. PL-14

TYPE 3-3



CROSS SECTION TYPE	ELEVATION	HORIZONTAL	STATION	GROUND HEIGHT	PAVEMENT HEIGHT	VERTICAL ALIGNMENT
NC-3.02	11+200	10.06	11.100	10.06	11.100	0.00
		9.98	11.099	9.98	11.099	0.00
		9.89	11.099	9.89	11.099	0.00
		9.88	11.098	9.88	11.098	0.00
		9.73	11.098	9.73	11.098	0.00
		9.66	11.097	9.66	11.097	0.00
		9.65	11.097	9.65	11.097	0.00
		9.62	11.095	9.62	11.095	0.00
		9.64	11.095	9.64	11.095	0.00
		9.62	11.095	9.62	11.095	0.00
		9.60	11.094	9.60	11.094	0.00
		9.68	11.094	9.68	11.094	0.00
		11.094	11.094	11.094	11.094	0.00
		9.68	11.092	9.68	11.092	0.00
		11.092	11.092	11.092	11.092	0.00
		9.67	11.092	9.67	11.092	0.00
		9.56	11.092	9.56	11.092	0.00
		9.70	11.092	9.70	11.092	0.00
		11.092	11.092	11.092	11.092	0.00
		9.65	11.093	9.65	11.093	0.00
		9.68	11.093	9.68	11.093	0.00
		11.093	11.093	11.093	11.093	0.00
		9.69	11.088	9.69	11.088	0.00
		9.70	11.088	9.70	11.088	0.00
		9.74	11.089	9.74	11.089	0.00
		9.76	11.089	9.76	11.089	0.00
		9.69	11.088	9.69	11.088	0.00
		9.69	11.086	9.69	11.086	0.00
		9.69	11.086	9.69	11.086	0.00
		9.70	11.087	9.70	11.087	0.00
		9.70	11.087	9.70	11.087	0.00
		9.80	11.087	9.80	11.087	0.00
		9.75	11.087	9.75	11.087	0.00
		9.80	11.087	9.80	11.087	0.00
		9.80	11.087	9.80	11.087	0.00
		9.69	11.086	9.69	11.086	0.00
		9.76	11.085	9.76	11.085	0.00
		9.76	11.085	9.76	11.085	0.00
		9.79	11.084	9.79	11.084	0.00
		11+900	11.084	11+900	11.084	0.00

MINISTRY OF PUBLIC WORKS AND TRANSPORT (MPWT)

IMPLEMENTATION REVIEW STUDY ON THE PROJECT FOR THE IMPROVEMENT OF NATIONAL ROAD NO.1 (PHNOM PENH-NEAK LOEUNG SECTION) IN THE KINGDOM OF CAMBODIA

JAPAN INTERNATIONAL COOPERATION AGENCY KATAHIRA & ENGINEERS INTERNATIONAL

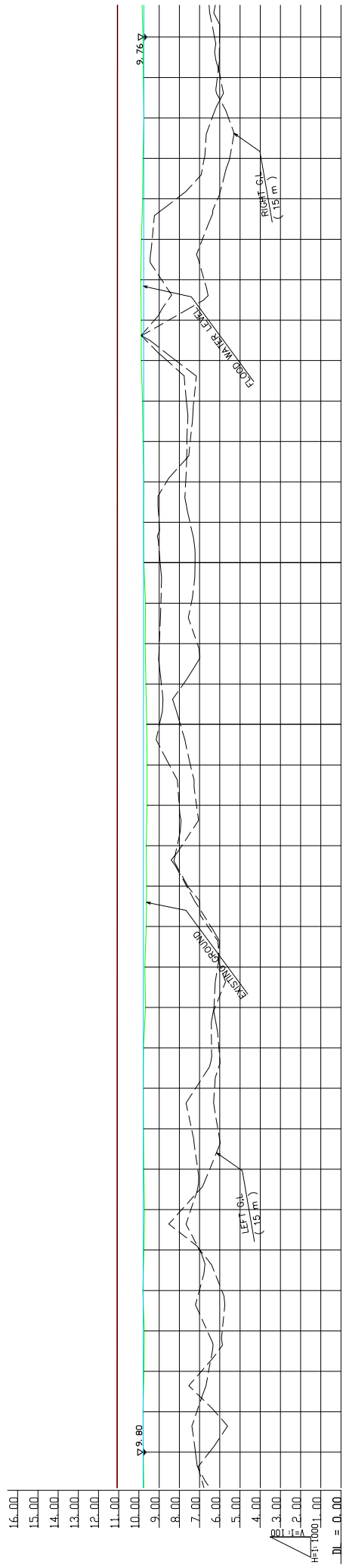
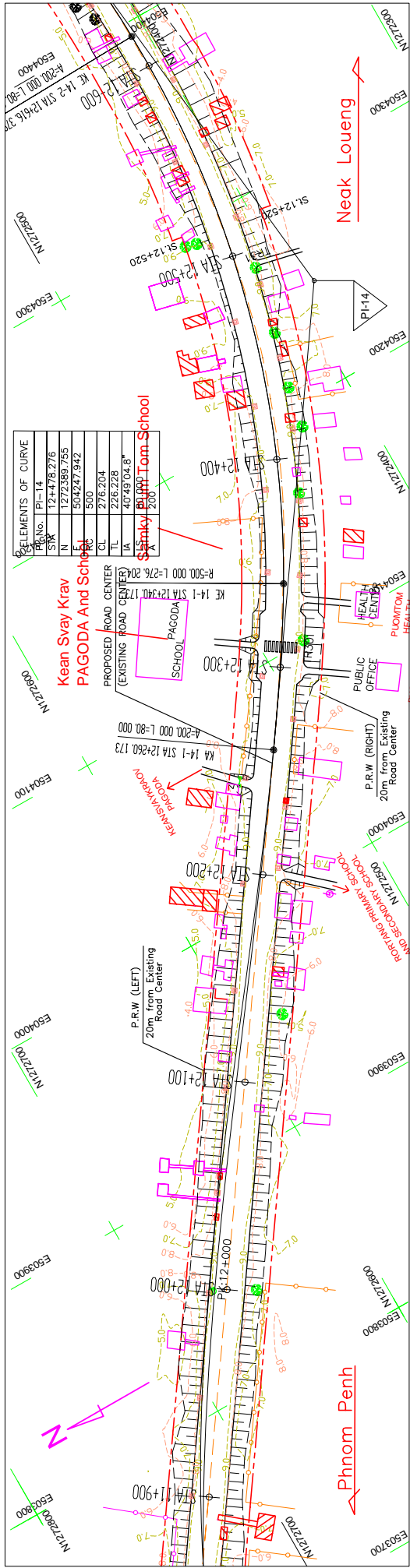
TITLE : PLAN AND PROFILE (STA.11+200—STA.11+900)

SCALE H=1/1000 V=1/100

Drawing No. Sheet No. PL-15

TYPE 3-3

NC-3.02



CROSS SECTION TYPE	STATION	GROUND ELEVATION	PAVEMENT HEIGHT	ALIGNMENT
NC-3_02	11+900	9.79	11.084	11.084
NC-3_02	11+920	9.80	11.084	11.084
NC-3_02	11+940	9.75	11.083	11.083
NC-3_02	11+960	9.74	11.083	11.083
NC-3_02	11+980	9.81	11.082	11.082
NC-3_02	11+1000	9.78	11.080	11.080
NC-3_02	11+1200	9.68	11.079	11.079
NC-3_02	11+1400	9.71	11.079	11.079
NC-3_02	11+1600	9.64	11.078	11.078
NC-3_02	11+1800	9.63	11.078	11.078
NC-3_02	11+2000	9.64	11.078	11.078
NC-3_02	11+2200	9.60	11.077	11.077
NC-3_02	11+2400	9.60	11.077	11.077
NC-3_02	11+2600	9.63	11.076	11.076
NC-3_02	11+2800	9.66	11.076	11.076
NC-3_02	11+3000	9.69	11.075	11.075
NC-3_02	11+3200	9.68	11.075	11.075
NC-3_02	11+3400	9.76	11.074	11.074
NC-3_02	11+3600	9.78	11.074	11.074
NC-3_02	11+3800	9.76	11.073	11.073
NC-3_02	11+4000	9.80	11.073	11.073
NC-3_02	11+4200	9.83	11.073	11.073
NC-3_02	11+4400	9.89	11.072	11.072
NC-3_02	11+4600	9.89	11.072	11.072
NC-3_02	11+4800	9.91	11.071	11.071
NC-3_02	11+5000	9.88	11.071	11.071
NC-3_02	11+5200	9.82	11.070	11.070
NC-3_02	11+5400	9.80	11.070	11.070
NC-3_02	11+5600	9.75	11.069	11.069
NC-3_02	11+5800	9.79	11.069	11.069
NC-3_02	11+6000	9.80	11.069	11.069

MINISTRY OF PUBLIC WORKS AND TRANSPORT (MPWT)

IMPLEMENTATION REVIEW STUDY ON THE PROJECT FOR THE IMPROVEMENT OF NATIONAL ROAD NO.1 (PHNOM PENH-NEAK LOEUNG SECTION) IN THE KINGDOM OF CAMBODIA

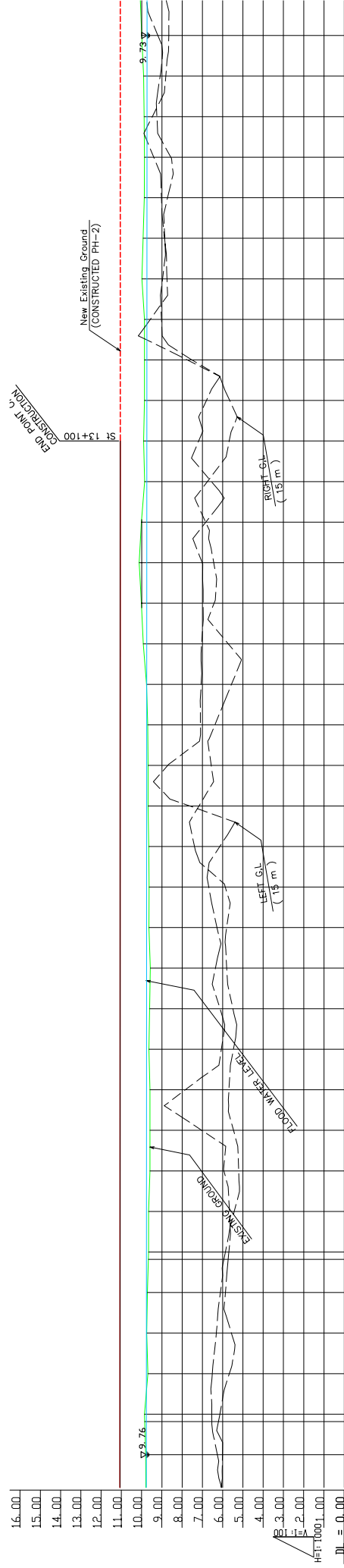
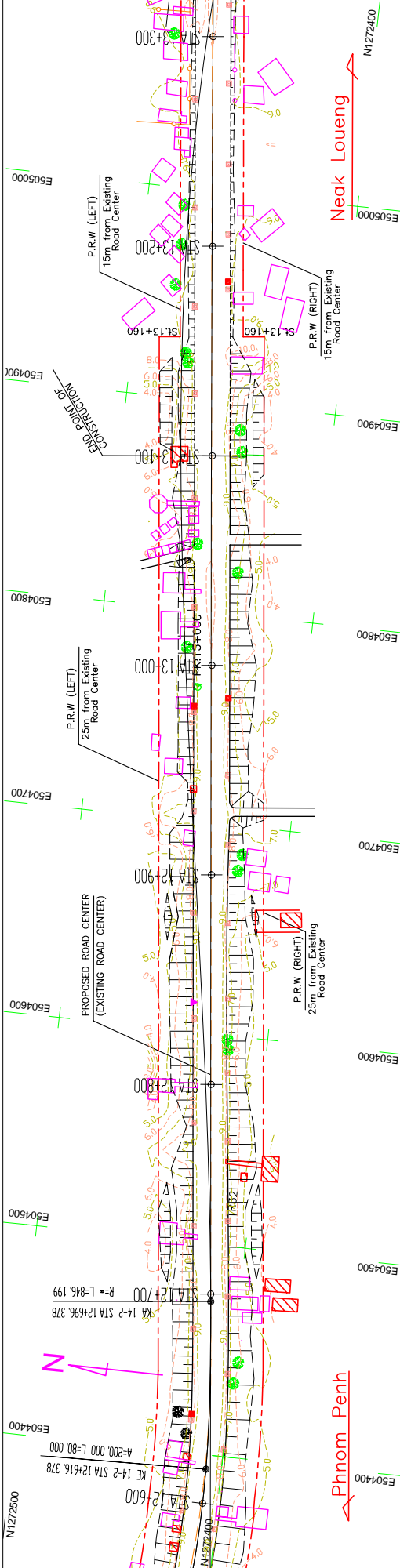
JAPAN INTERNATIONAL COOPERATION AGENCY KATAHIRA & ENGINEERS INTERNATIONAL

TITLE : PLAN AND PROFILE (STA. 11+900 – STA. 12+600)

SCALE H=1/1000 V=1/100

Drawing No. Sheet No. PL-16

TYPE 3-3



CROSS SECTION TYPE	ELEVATION	HORIZONTAL	STATION	GROUND HEIGHT	PAVEMENT HEIGHT	VERTICAL ALIGNMENT
12+600	9.80	11.069	11.069	9.80	11.069	11.069
12+700	9.85	11.068	11.068	9.85	11.068	11.068
12+800	9.90	11.067	11.067	9.90	11.067	11.067
12+900	9.95	11.066	11.066	9.95	11.066	11.066
13+000	10.00	11.065	11.065	10.00	11.065	11.065
13+100	10.05	11.064	11.064	10.05	11.064	11.064
13+200	10.10	11.063	11.063	10.10	11.063	11.063
13+300	10.15	11.062	11.062	10.15	11.062	11.062
13+400	10.20	11.061	11.061	10.20	11.061	11.061
13+500	10.25	11.060	11.060	10.25	11.060	11.060
13+600	10.30	11.059	11.059	10.30	11.059	11.059
13+700	10.35	11.058	11.058	10.35	11.058	11.058
13+800	10.40	11.057	11.057	10.40	11.057	11.057
13+900	10.45	11.056	11.056	10.45	11.056	11.056
14+000	10.50	11.055	11.055	10.50	11.055	11.055
14+100	10.55	11.054	11.054	10.55	11.054	11.054
14+200	10.60	11.053	11.053	10.60	11.053	11.053
14+300	10.65	11.052	11.052	10.65	11.052	11.052
14+400	10.70	11.051	11.051	10.70	11.051	11.051
14+500	10.75	11.050	11.050	10.75	11.050	11.050
14+600	10.80	11.049	11.049	10.80	11.049	11.049
14+700	10.85	11.048	11.048	10.85	11.048	11.048
14+800	10.90	11.047	11.047	10.90	11.047	11.047
14+900	10.95	11.046	11.046	10.95	11.046	11.046
15+000	11.00	11.045	11.045	11.00	11.045	11.045

MINISTRY OF PUBLIC WORKS AND TRANSPORT (MPWT)

IMPLEMENTATION REVIEW STUDY ON THE PROJECT FOR THE IMPROVEMENT OF NATIONAL ROAD NO.1 (PHNOM PENH-NEAK LOEUNG SECTION) IN THE KINGDOM OF CAMBODIA

JAPAN INTERNATIONAL COOPERATION AGENCY KATAHIRA & ENGINEERS INTERNATIONAL

TITLE : PLAN AND PROFILE (STA. 12+600—STA. 13+300)

SCALE H=1/1000 V=1/100

Drawing No. Sheet No. PL-17

TYPE 3-3 TYPE 3-3 TYPE 3-3