

Station	Accumulative Length	Ground Height	Proposal Height	Gradient
NO.263+760	263+760.0	631.46	631.802	
NO.263+800	263+800.0	631.38	631.617	$i=0.463\%$ $L=697.774m$
NO.263+900	263+900.0	631.30	631.154	
NO.264+000	264+000.0	631.31	630.692	
NO.264+100	264+100.0	630.39	630.097	
NO.264+200	264+200.0	628.99	628.975	$i=1.571\%$ $L=285.148m$
NO.264+300	264+300.0	627.43	627.430	
NO.264+400	264+400.0	625.74	626.271	
NO.264+500	264+500.0	626.16	626.268	$i=-0.773\%$ $L=83.870m$

JICA JAPAN INTERNATIONAL COOPERATION AGENCY

ANE NATIONAL ROAD ADMINISTRATION

REMARKS:

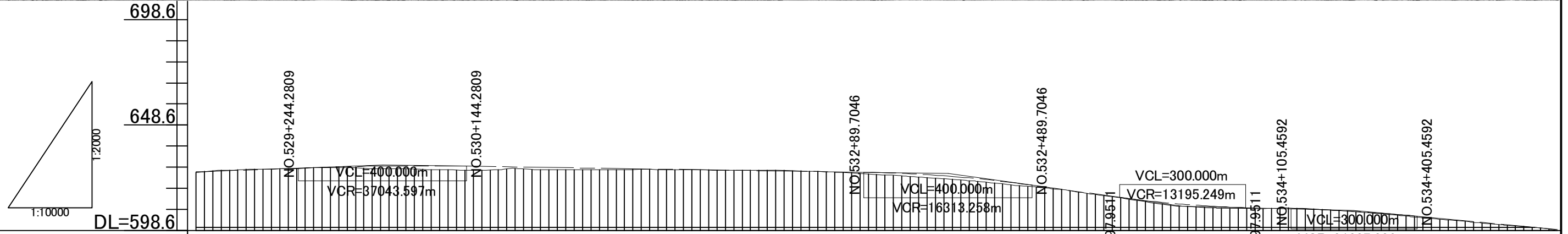
THE STUDY ON UPGRADING OF NAMPULA - CUAMBA ROAD

ORIENTAL CONSULTANTS CO., LTD.
JAPAN ENGINEERING CONSULTANTS CO., LTD.

DRAWING TITLE
Plan and Profile (88/115)

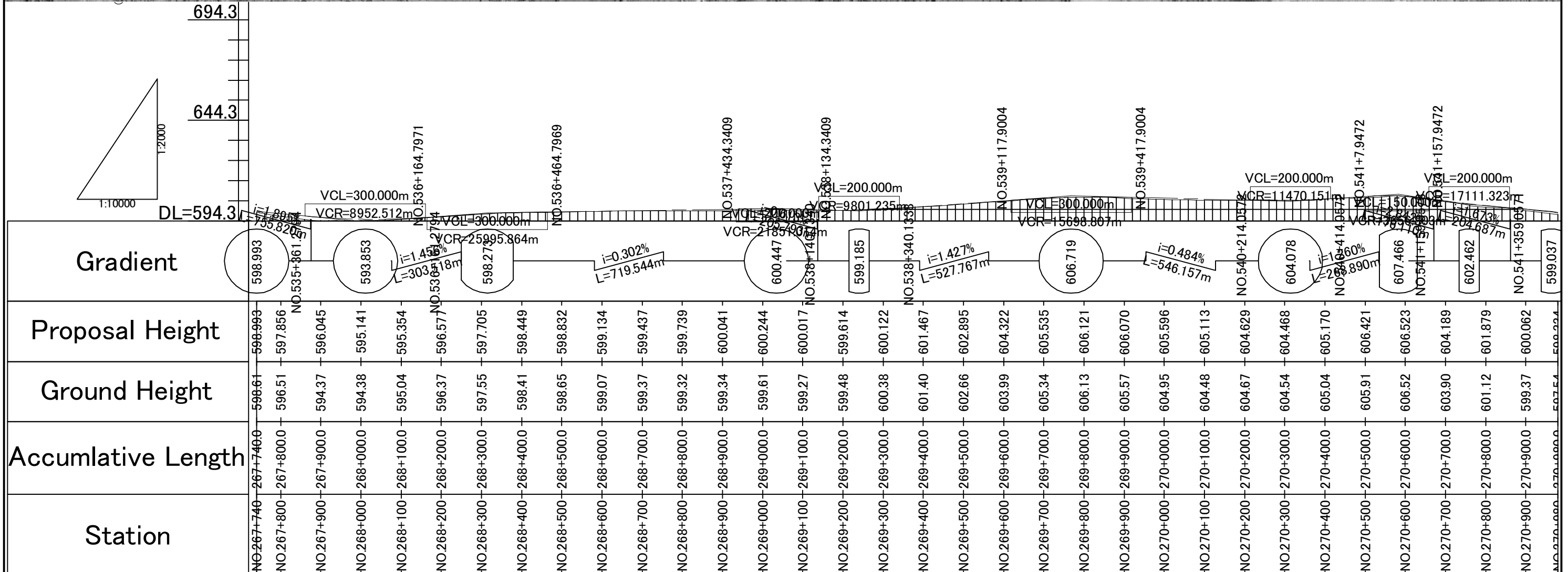
NAME	PREPARED BY	CHECKED BY	APPROVED BY
SIGNATURE			
DATE			

SCALE	SHEET NO.	DRAWING NO.	REV. NO.
1: 10,000		89	-



Station	Accumulative Length	Ground Height	Proposal Height	Gradient
NO.264+500	264+500.0	626.16	626.268	626.253
NO.264+600	264+600.0	627.33	627.026	$i=0.773\%$ $L=528.151m$
NO.264+700	264+700.0	627.81	627.798	629.686
NO.264+800	264+800.0	628.43	628.529	$i=0.307\%$ $L=1345.424m$
NO.264+900	264+900.0	628.09	629.017	
NO.265+000	265+000.0	627.84	629.234	
NO.265+100	265+100.0	627.31	629.181	
NO.265+200	265+200.0	627.17	628.901	
NO.265+300	265+300.0	627.46	628.594	
NO.265+400	265+400.0	627.28	628.287	
NO.265+500	265+500.0	627.47	627.980	
NO.265+600	265+600.0	627.43	627.673	
NO.265+700	265+700.0	627.31	627.366	
NO.265+800	265+800.0	627.10	627.059	
NO.265+900	265+900.0	627.06	626.751	
NO.266+000	266+000.0	626.39	626.444	
NO.266+100	266+100.0	625.35	626.134	
NO.266+200	266+200.0	624.19	625.457	
NO.266+300	266+300.0	622.77	624.168	$i=2.759\%$ $L=558.247m$
NO.266+400	266+400.0	621.05	622.265	
NO.266+500	266+500.0	619.14	619.753	
NO.266+600	266+600.0	616.81	616.994	
NO.266+700	266+700.0	613.96	614.235	
NO.266+800	266+800.0	611.00	611.870	
NO.266+900	266+900.0	609.48	610.263	
NO.267+000	267+000.0	608.99	609.414	$i=3.486\%$ $L=487.508m$
NO.267+100	267+100.0	609.29	608.929	
NO.267+200	267+200.0	608.24	608.233	
NO.267+300	267+300.0	606.81	607.069	
NO.267+400	267+400.0	604.96	605.435	
NO.267+500	267+500.0	603.22	603.540	
NO.267+600	267+600.0	601.38	601.646	
NO.267+700	267+700.0	599.71	599.751	
NO.267+800	267+800.0	599.21	599.251	
NO.267+900	267+900.0	598.71	598.751	
NO.268+000	268+000.0	598.21	598.251	

JAPAN INTERNATIONAL COOPERATION AGENCY NATIONAL ROAD ADMINISTRATION	REMARKS:	THE STUDY ON UPGRADING OF NAMPULA - CUAMBA ROAD			
		ORIENTAL CONSULTANTS CO., LTD. JAPAN ENGINEERING CONSULTANTS CO., LTD.		DRAWING TITLE Plan and Profile (89/115)	
		PREPARED BY	CHECKED BY	APPROVED BY	SCALE
		NAME			1: 10,000
		SIGNATURE			SHEET NO.
		DATE			DRAWING NO.
					REV. NO.
					90
					-



Station	Accumulative Length	Ground Height	Proposal Height	Gradient
NO.267+740	267+740.0	598.61	598.993	598.993
NO.267+800	267+800.0	596.51	597.856	597.856
NO.267+900	267+900.0	594.37	596.045	596.045
NO.268+000	268+000.0	594.38	595.141	593.853
NO.268+100	268+100.0	595.04	595.354	595.354
NO.268+200	268+200.0	596.37	596.577	596.577
NO.268+300	268+300.0	597.55	597.705	597.705
NO.268+400	268+400.0	598.41	598.449	598.449
NO.268+500	268+500.0	598.65	598.832	598.832
NO.268+600	268+600.0	599.07	599.134	599.134
NO.268+700	268+700.0	599.37	599.437	599.437
NO.268+800	268+800.0	599.32	599.739	599.739
NO.268+900	268+900.0	599.34	600.041	600.041
NO.269+000	269+000.0	599.61	600.244	600.244
NO.269+100	269+100.0	599.27	600.017	600.017
NO.269+200	269+200.0	599.48	599.614	599.614
NO.269+300	269+300.0	600.38	600.122	600.122
NO.269+400	269+400.0	601.40	601.467	601.467
NO.269+500	269+500.0	602.66	602.895	602.895
NO.269+600	269+600.0	603.99	604.322	604.322
NO.269+700	269+700.0	605.34	605.535	605.535
NO.269+800	269+800.0	606.13	606.121	606.121
NO.269+900	269+900.0	605.57	606.070	606.070
NO.270+000	270+000.0	604.95	605.596	605.596
NO.270+100	270+100.0	604.48	605.113	605.113
NO.270+200	270+200.0	604.67	604.629	604.629
NO.270+300	270+300.0	604.54	604.468	604.468
NO.270+400	270+400.0	605.04	605.170	605.170
NO.270+500	270+500.0	605.91	606.421	606.421
NO.270+600	270+600.0	606.52	606.523	606.523
NO.270+700	270+700.0	603.90	604.189	604.189
NO.270+800	270+800.0	601.12	601.879	601.879
NO.270+900	270+900.0	599.37	600.062	600.062
NO.270+999	270+999.0	597.54	599.294	599.294

JICA JAPAN INTERNATIONAL COOPERATION AGENCY

ANR NATIONAL ROAD ADMINISTRATION

REMARKS:

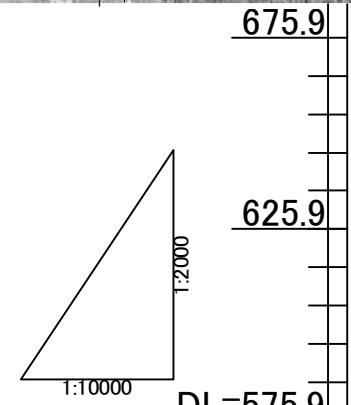
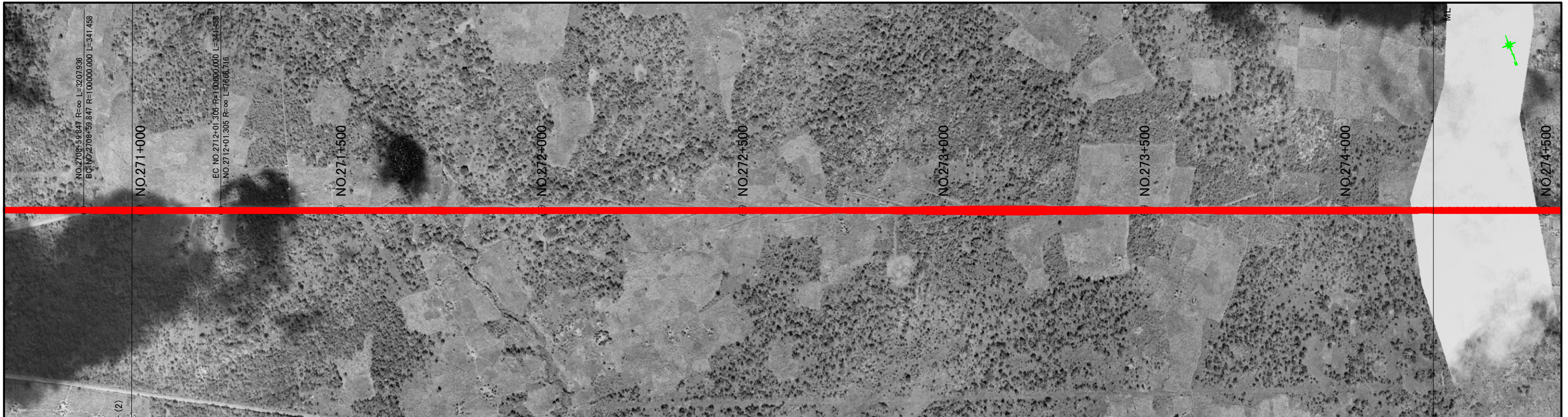
THE STUDY ON UPGRADING OF NAMPULA - CUAMBA ROAD

ORIENTAL CONSULTANTS CO., LTD.
JAPAN ENGINEERING CONSULTANTS CO., LTD.

DRAWING TITLE
Plan and Profile (90/115)

NAME	PREPARED BY	CHECKED BY	APPROVED BY
SIGNATURE			
DATE			

SCALE	SHEET NO.	DRAWING NO.	REV. NO.
1: 10,000		91	-



Station	Accumulative Length	Ground Height	Proposal Height	Gradient
NO.271+000	271+000.0	597.54	599.33	598.558
NO.271+100	271+100.0	594.58	595.020	i=2.948% L=837.651m
NO.271+200	271+200.0	591.73	592.072	
NO.271+300	271+300.0	588.83	589.124	NO.543+126.3948
NO.271+400	271+400.0	585.90	586.176	
NO.271+500	271+500.0	582.91	583.228	574.343
NO.271+600	271+600.0	580.11	580.280	
NO.271+700	271+700.0	577.10	577.707	NO.543+476.3948
NO.271+800	271+800.0	575.91	576.471	
NO.271+900	271+900.0	576.51	576.619	i=1.899% L=1489.012m
NO.272+000	272+000.0	577.86	578.114	
NO.272+100	272+100.0	579.39	580.013	NO.545+490.4072
NO.272+200	272+200.0	581.24	581.912	
NO.272+300	272+300.0	583.40	583.811	VCL=600.000m VCR=21889.315m
NO.272+400	272+400.0	585.49	585.710	
NO.272+500	272+500.0	587.56	587.608	NO.547+90.4072
NO.272+600	272+600.0	589.66	589.507	
NO.272+700	272+700.0	591.46	591.406	602.617
NO.272+800	272+800.0	592.92	593.305	
NO.272+900	272+900.0	594.21	595.204	i=0.842% L=929.593m
NO.273+000	273+000.0	595.45	597.101	
NO.273+100	273+100.0	596.58	598.727	504.709
NO.273+200	273+200.0	597.76	599.897	
NO.273+300	273+300.0	598.67	600.610	
NO.273+400	273+400.0	599.54	600.866	
NO.273+500	273+500.0	599.90	600.665	
NO.273+600	273+600.0	599.51	600.010	
NO.273+700	273+700.0	598.30	599.168	
NO.273+800	273+800.0	597.31	598.325	
NO.273+900	273+900.0	596.53	597.483	
NO.274+000	274+000.0	595.55	596.641	
NO.274+100	274+100.0	594.95	595.799	
NO.274+200	274+200.0	594.91	594.957	

JICA JAPAN INTERNATIONAL COOPERATION AGENCY

ANR NATIONAL ROAD ADMINISTRATION

REMARKS:

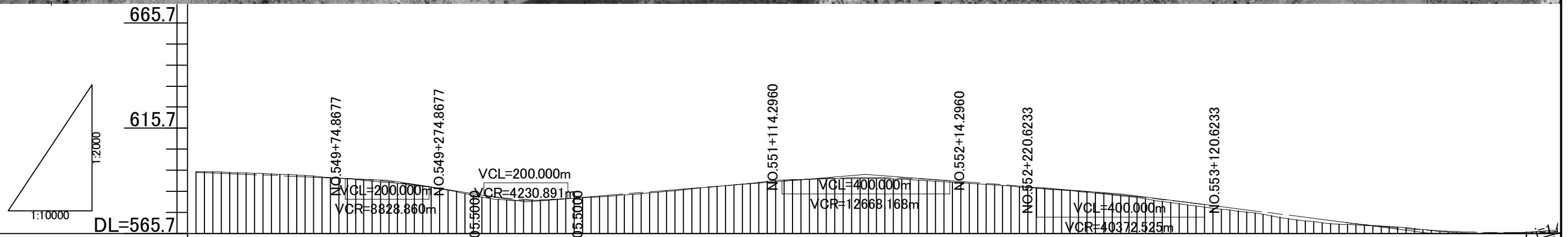
THE STUDY ON UPGRADING OF NAMPULA - CUAMBA ROAD

ORIENTAL CONSULTANTS CO., LTD.
JAPAN ENGINEERING CONSULTANTS CO., LTD.

DRAWING TITLE
Plan and Profile (91/115)

PREPARED BY	CHECKED BY	APPROVED BY
NAME		
SIGNATURE		
DATE		

SCALE	SHEET NO.	DRAWING NO.	REV. NO.
1: 10,000		92	-



Station	Ground Height	Proposal Height	Gradient	Accumulative Length
NO.274+220	594.94	594.788		274+220.0
NO.274+300	594.70	594.114	$i=0.842\%$ $L=1384.461m$	274+300.0
NO.274+400	593.98	593.272		274+400.0
NO.274+500	592.90	592.430		274+500.0
NO.274+600	591.36	591.552		274+600.0
NO.274+700	589.52	589.859	$i=3.108\%$ $L=330.632m$	274+700.0
NO.274+800	586.98	587.069		274+800.0
NO.274+900	582.94	583.961		274+900.0
NO.275+000	581.43	581.909		275+000.0
NO.275+100	582.29	582.217		275+100.0
NO.275+200	583.42	583.833		275+200.0
NO.275+300	584.95	585.453		275+300.0
NO.275+400	586.90	587.072	$i=1.620\%$ $L=808.796m$	275+400.0
NO.275+500	588.75	588.692		275+500.0
NO.275+600	590.73	590.312		275+600.0
NO.275+700	591.61	591.641		275+700.0
NO.275+800	591.83	592.190		275+800.0
NO.275+900	591.39	591.949		275+900.0
NO.276+000	590.32	590.918	$i=1.538\%$ $L=606.327m$	276+000.0
NO.276+100	588.94	589.389		276+100.0
NO.276+200	587.47	587.851		276+200.0
NO.276+300	585.99	586.235		276+300.0
NO.276+400	584.12	584.376		276+400.0
NO.276+500	581.44	582.270		276+500.0
NO.276+600	578.78	579.917		276+600.0
NO.276+700	576.32	577.393	$i=2.529\%$ $L=834.883m$	276+700.0
NO.276+800	573.31	574.865		276+800.0
NO.276+900	570.70	572.336		276+900.0
NO.277+000	569.55	569.873		277+000.0
NO.277+100	568.33	567.973		277+100.0
NO.277+200	566.27	566.737		277+200.0
NO.277+300	565.96	566.166		277+300.0
NO.277+400	566.47	566.260		277+400.0

JAPAN INTERNATIONAL COOPERATION AGENCY
 NATIONAL ROAD ADMINISTRATION

REMARKS:

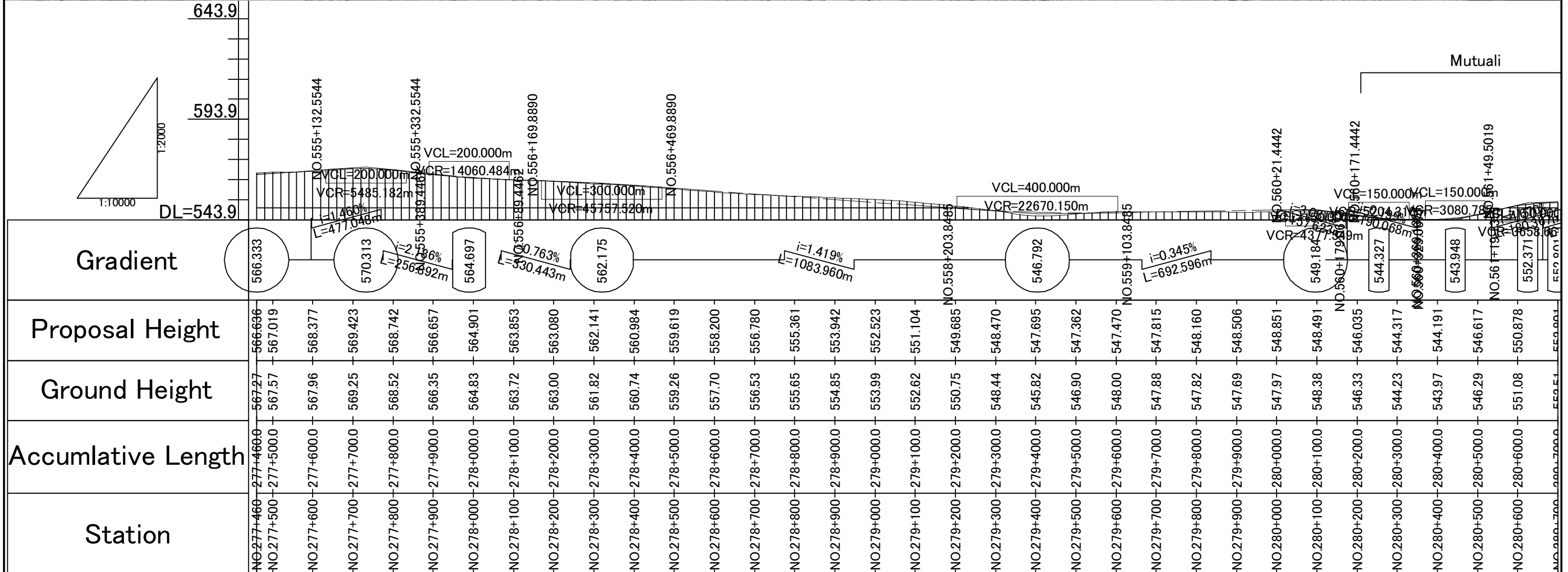
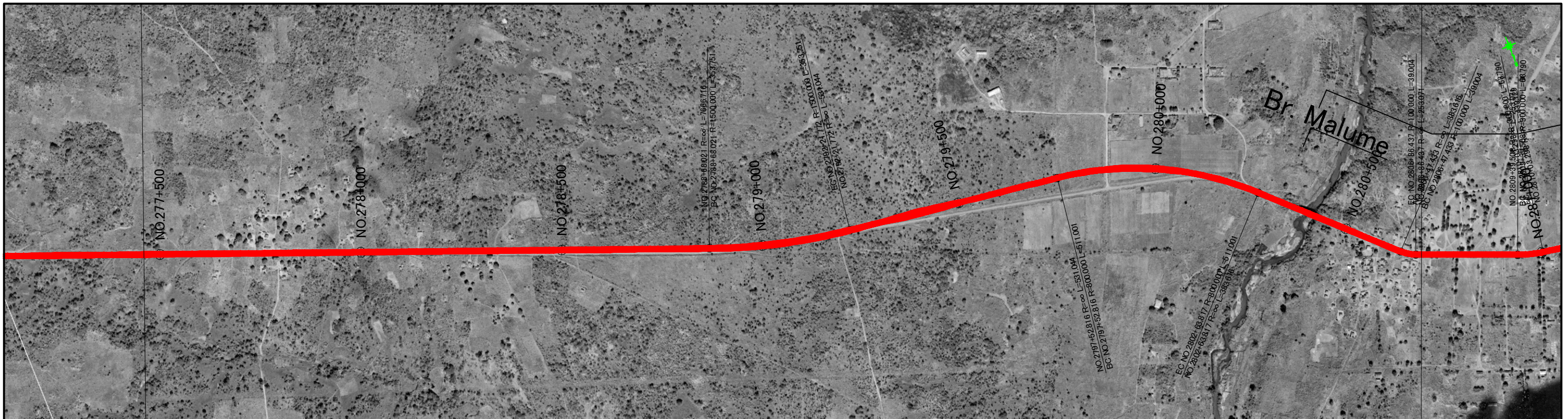
THE STUDY ON UPGRADING OF NAMPULA - CUAMBA ROAD

ORIENTAL CONSULTANTS CO., LTD.
 JAPAN ENGINEERING CONSULTANTS CO., LTD.

DRAWING TITLE
Plan and Profile (92/115)

NAME	PREPARED BY	CHECKED BY	APPROVED BY
SIGNATURE			
DATE			

SCALE	SHEET NO.	DRAWING NO.	REV. NO.
1: 10,000		93	-



Station	Accumulative Length	Ground Height	Proposal Height	Gradient
NO.277+460	277+460.0	567.27	566.696	566.333
NO.277+500	277+500.0	567.57	567.019	
NO.277+600	277+600.0	567.96	568.377	
NO.277+700	277+700.0	569.25	569.423	
NO.277+800	277+800.0	568.52	568.742	
NO.277+900	277+900.0	566.35	566.657	
NO.278+000	278+000.0	564.83	564.901	
NO.278+100	278+100.0	563.72	563.853	
NO.278+200	278+200.0	563.00	563.080	
NO.278+300	278+300.0	561.82	562.141	
NO.278+400	278+400.0	560.74	560.984	
NO.278+500	278+500.0	559.26	559.619	
NO.278+600	278+600.0	557.70	558.200	
NO.278+700	278+700.0	556.53	556.780	
NO.278+800	278+800.0	555.65	555.361	
NO.278+900	278+900.0	554.85	553.942	
NO.279+000	279+000.0	553.99	552.523	
NO.279+100	279+100.0	552.62	551.104	
NO.279+200	279+200.0	550.75	549.685	
NO.279+300	279+300.0	548.44	548.470	
NO.279+400	279+400.0	545.82	547.695	
NO.279+500	279+500.0	546.90	547.362	
NO.279+600	279+600.0	548.00	547.470	
NO.279+700	279+700.0	547.88	547.815	
NO.279+800	279+800.0	547.82	548.160	
NO.279+900	279+900.0	547.69	548.506	
NO.280+000	280+000.0	547.97	548.851	
NO.280+100	280+100.0	548.38	548.491	
NO.280+200	280+200.0	546.33	546.035	
NO.280+300	280+300.0	544.23	544.317	
NO.280+400	280+400.0	543.97	544.191	
NO.280+500	280+500.0	546.29	546.617	
NO.280+600	280+600.0	551.08	550.878	
NO.280+700	280+700.0	550.51	550.001	

JAPAN INTERNATIONAL COOPERATION AGENCY
 NATIONAL ROAD ADMINISTRATION

REMARKS:

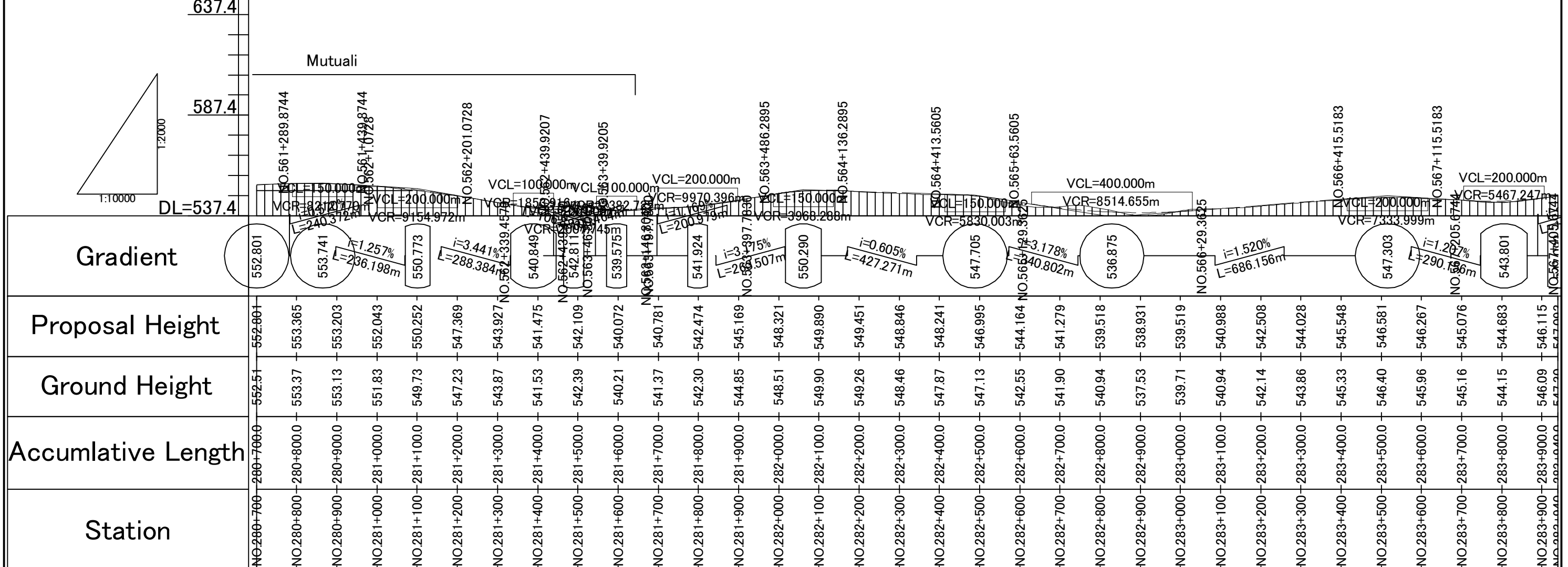
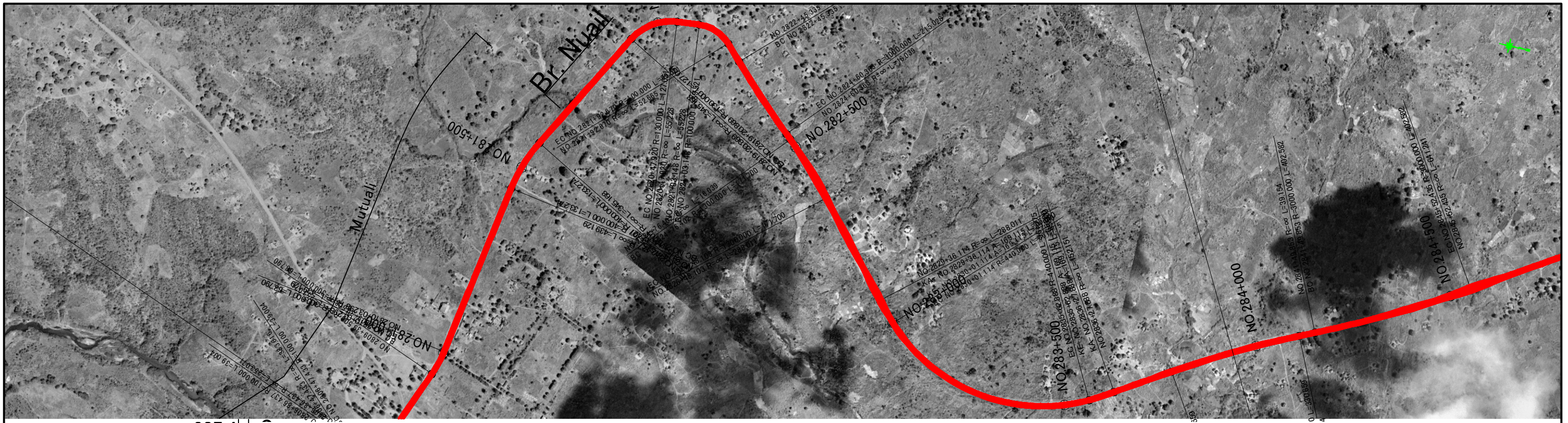
THE STUDY ON UPGRADING OF NAMPULA - CUAMBA ROAD

ORIENTAL CONSULTANTS CO., LTD.
 JAPAN ENGINEERING CONSULTANTS CO., LTD.

DRAWING TITLE
Plan and Profile (93/115)

PREPARED BY	CHECKED BY	APPROVED BY
NAME		
SIGNATURE		
DATE		

SCALE	SHEET NO.	DRAWING NO.	REV. NO.
1: 10,000		94	-

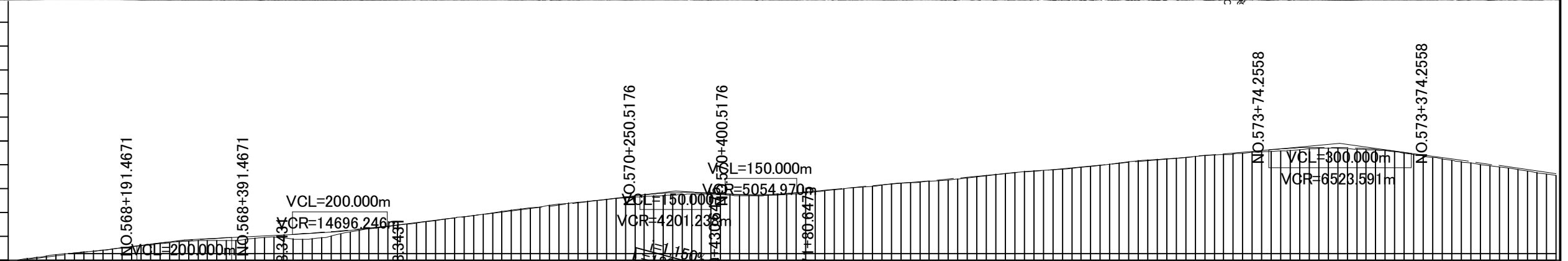
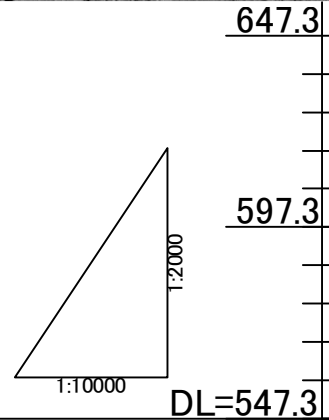
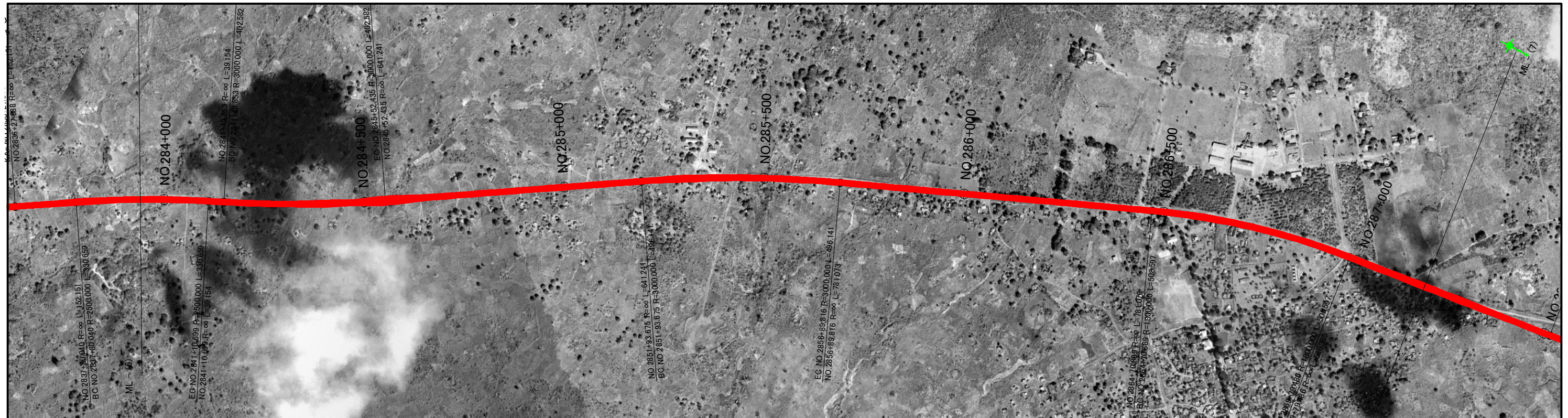


Station	Accumulative Length	Ground Height	Proposal Height	Gradient
NO.280+700	280+700.0	552.51	552.801	552.801
NO.280+800	280+800.0	553.37	553.365	553.741
NO.280+900	280+900.0	553.13	553.203	553.741
NO.281+000	281+000.0	551.83	552.043	550.773
NO.281+100	281+100.0	549.73	550.252	550.773
NO.281+200	281+200.0	547.23	547.369	550.773
NO.281+300	281+300.0	543.87	543.927	550.773
NO.281+400	281+400.0	541.53	541.475	550.773
NO.281+500	281+500.0	542.39	542.109	550.773
NO.281+600	281+600.0	540.21	540.072	550.773
NO.281+700	281+700.0	541.37	540.781	550.773
NO.281+800	281+800.0	542.30	542.474	550.773
NO.281+900	281+900.0	544.85	545.169	550.773
NO.282+000	282+000.0	548.51	548.321	550.773
NO.282+100	282+100.0	549.90	549.890	550.773
NO.282+200	282+200.0	549.26	549.451	550.773
NO.282+300	282+300.0	548.46	548.846	550.773
NO.282+400	282+400.0	547.87	548.241	550.773
NO.282+500	282+500.0	547.13	546.995	550.773
NO.282+600	282+600.0	542.55	544.164	550.773
NO.282+700	282+700.0	541.90	541.279	550.773
NO.282+800	282+800.0	540.94	539.518	550.773
NO.282+900	282+900.0	537.53	538.931	550.773
NO.283+000	283+000.0	539.71	539.519	550.773
NO.283+100	283+100.0	540.94	540.988	550.773
NO.283+200	283+200.0	542.14	542.508	550.773
NO.283+300	283+300.0	543.86	544.028	550.773
NO.283+400	283+400.0	545.33	545.548	550.773
NO.283+500	283+500.0	546.40	546.581	550.773
NO.283+600	283+600.0	545.96	546.267	550.773
NO.283+700	283+700.0	545.16	545.076	550.773
NO.283+800	283+800.0	544.15	544.683	550.773
NO.283+900	283+900.0	546.09	546.115	550.773
NO.284+000	284+000.0	547.90	547.000	550.773

JAPAN INTERNATIONAL COOPERATION AGENCY
 NATIONAL ROAD ADMINISTRATION

REMARKS:

THE STUDY ON UPGRADING OF NAMPULA - CUAMBA ROAD
 ORIENTAL CONSULTANTS CO., LTD.
 JAPAN ENGINEERING CONSULTANTS CO., LTD.
 DRAWING TITLE: Plan and Profile (94/115)
 SCALE: 1: 10,000
 SHEET NO.: 95
 DRAWING NO.: 95
 REV. NO.: -





Station	Accumulative Length	Ground Height	Proposal Height	Gradient
NO.283+940	283+940.0	547.30	547.093	DL=547.3
NO.284+000	284+000.0	548.99	548.563	$i=2.451\%$ $L=485.793m$
NO.284+100	284+100.0	551.11	551.014	
NO.284+200	284+200.0	553.30	553.463	
NO.284+300	284+300.0	555.27	555.507	
NO.284+400	284+400.0	555.56	556.857	$i=1.059\%$ $L=326.800m$
NO.284+500	284+500.0	556.59	557.916	
NO.284+600	284+600.0	557.32	559.202	
NO.284+700	284+700.0	560.82	561.157	
NO.284+800	284+800.0	563.37	563.566	
NO.284+900	284+900.0	565.93	565.986	$i=2.420\%$ $L=707.174m$
NO.285+000	285+000.0	568.75	568.406	
NO.285+100	285+100.0	571.19	570.826	
NO.285+200	285+200.0	573.15	573.246	
NO.285+300	285+300.0	574.40	575.375	
NO.285+400	285+400.0	574.86	575.427	
NO.285+500	285+500.0	574.32	574.753	
NO.285+600	285+600.0	575.51	575.927	
NO.285+700	285+700.0	577.58	577.744	
NO.285+800	285+800.0	579.56	579.561	
NO.285+900	285+900.0	580.93	581.378	
NO.286+000	286+000.0	583.22	583.195	$i=1.817\%$ $L=1218.608m$
NO.286+100	286+100.0	584.95	585.012	
NO.286+200	286+200.0	586.67	586.829	
NO.286+300	286+300.0	589.06	588.647	
NO.286+400	286+400.0	590.45	590.464	
NO.286+500	286+500.0	591.84	592.281	
NO.286+600	286+600.0	593.08	594.047	
NO.286+700	286+700.0	594.24	594.703	
NO.286+800	286+800.0	593.48	593.826	
NO.286+900	286+900.0	590.97	591.467	
NO.287+000	287+000.0	588.01	588.686	$i=2.782\%$ $L=455.744m$
NO.287+100	287+100.0	585.33	585.904	
NO.287+100	287+100.0	589.70	589.670	

REMARKS:

 JAPAN INTERNATIONAL COOPERATION AGENCY
 NATIONAL ROAD ADMINISTRATION

THE STUDY ON UPGRADING OF NAMPULA - CUAMBA ROAD

 ORIENTAL CONSULTANTS CO., LTD.
 JAPAN ENGINEERING CONSULTANTS CO., LTD.

DRAWING TITLE
Plan and Profile (95/115)

PREPARED BY	CHECKED BY	APPROVED BY
NAME		
SIGNATURE		
DATE		

SCALE	SHEET NO.	DRAWING NO.	REV. NO.
1: 10,000		96	-