

JICA JAPAN INTERNATIONAL COOPERATION AGENCY

ANR NATIONAL ROAD ADMINISTRATION

REMARKS:

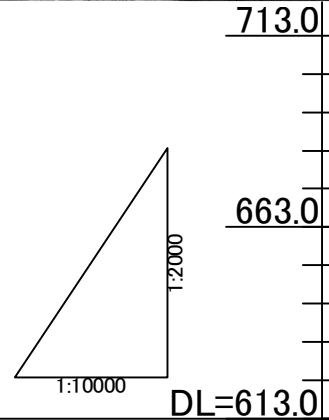
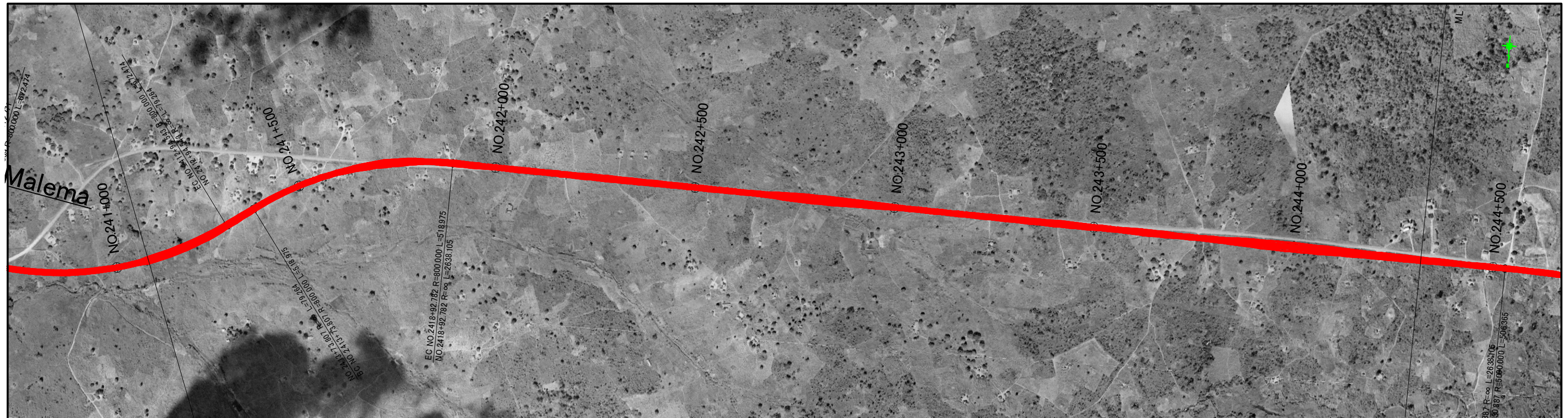
THE STUDY ON UPGRADING OF NAMPULA - CUAMBA ROAD

ORIENTAL CONSULTANTS CO., LTD.
JAPAN ENGINEERING CONSULTANTS CO., LTD.

DRAWING TITLE
Plan and Profile (80/115)

NAME	PREPARED BY	CHECKED BY	APPROVED BY
SIGNATURE			
DATE			

SCALE	SHEET NO.	DRAWING NO.	REV. NO.
1: 10,000		81	-



Station	Ground Height	Proposal Height	Gradient	Remarks
NO.241+000	613.46	609.699		
NO.241+200	615.09	611.948	$i=1.875\%$ $L=747.370m$	
NO.241+300	615.88	613.823		
NO.241+400	616.37	615.697		
NO.241+500	617.30	617.445		
NO.241+600	618.32	618.505		
NO.241+700	617.30	618.937	$i=0.366\%$ $L=515.577m$	
NO.241+800	618.26	619.303		
NO.241+900	621.13	619.669		
NO.242+000	619.97	620.083		
NO.242+100	620.58	620.938		
NO.242+200	623.11	622.275		
NO.242+300	625.09	623.699		
NO.242+400	626.06	625.124	$i=1.425\%$ $L=900.259m$	
NO.242+500	626.96	626.549		
NO.242+600	627.97	627.974		
NO.242+700	628.37	629.398		
NO.242+800	628.25	630.823		
NO.242+900	630.58	632.418		
NO.243+000	633.93	634.413		
NO.243+100	636.78	636.810		
NO.243+200	639.83	639.437	$i=2.628\%$ $L=766.384m$	
NO.243+300	643.02	642.065		
NO.243+400	646.30	644.694		
NO.243+500	647.97	647.322		
NO.243+600	649.11	649.951		
NO.243+700	651.87	652.302		
NO.243+800	653.21	653.715		
NO.243+900	652.05	654.438		
NO.244+000	652.11	655.134	$i=0.696\%$ $L=595.779m$	
NO.244+100	653.52	655.830		
NO.244+200	655.00	656.525		
NO.244+300	655.98	657.221		

JICA JAPAN INTERNATIONAL COOPERATION AGENCY

ANE NATIONAL ROAD ADMINISTRATION

REMARKS:

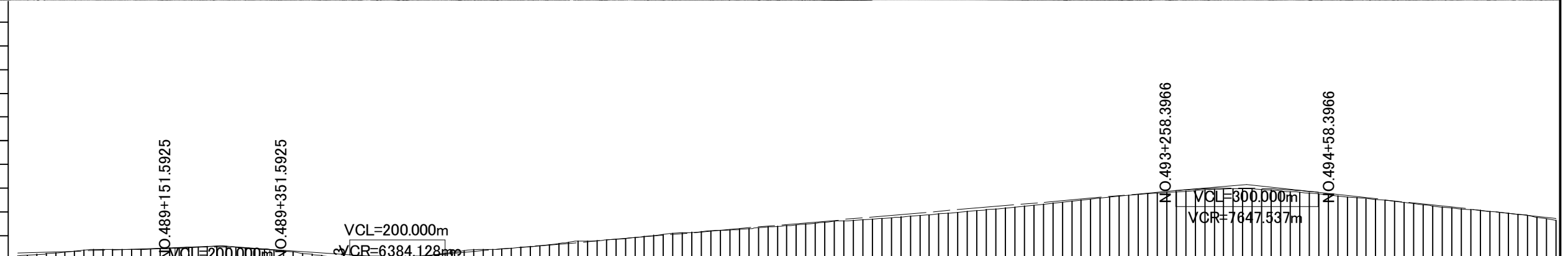
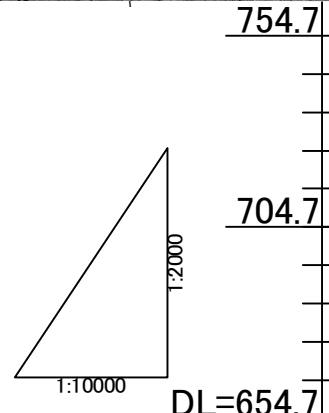
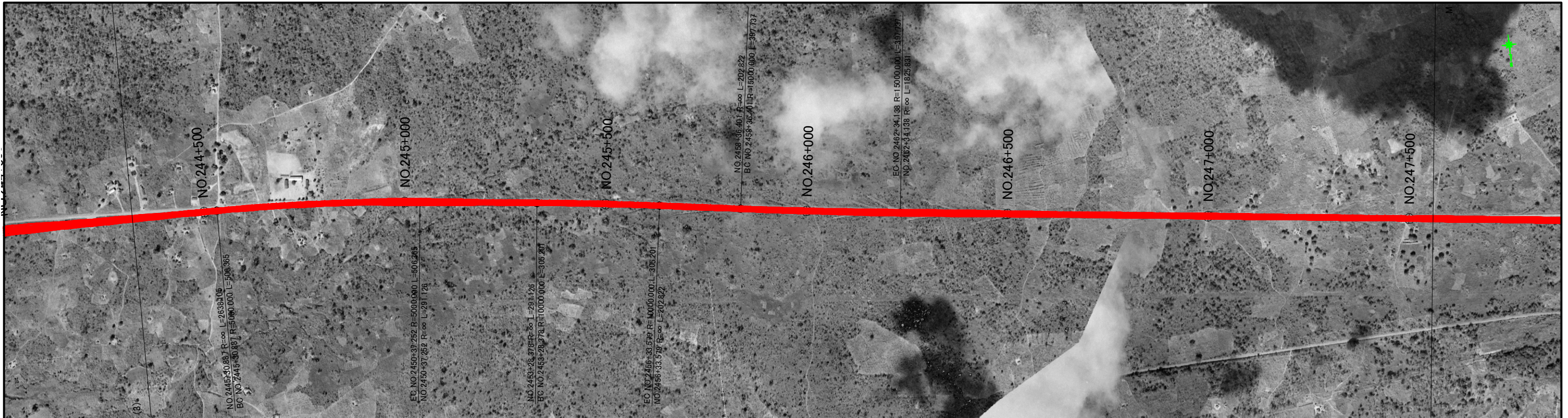
THE STUDY ON UPGRADING OF NAMPULA - CUAMBA ROAD

ORIENTAL CONSULTANTS CO., LTD.
JAPAN ENGINEERING CONSULTANTS CO., LTD.

DRAWING TITLE
Plan and Profile (81/115)

NAME	PREPARED BY	CHECKED BY	APPROVED BY
SIGNATURE			
DATE			

SCALE	SHEET NO.	DRAWING NO.	REV. NO.
1: 10,000		82	-



Station	Accumulative Length	Ground Height	Proposal Height	Gradient
NO.244+320	244+320.0	656.24	657.360	657.360
NO.244+400	244+400.0	657.37	657.917	$i=0.696\%$ $L=1027.372m$
NO.244+500	244+500.0	658.96	658.612	
NO.244+600	244+600.0	659.02	659.308	
NO.244+700	244+700.0	659.84	659.881	
NO.244+800	244+800.0	659.41	659.546	
NO.244+900	244+900.0	657.83	658.286	
NO.245+000	245+000.0	655.54	656.887	$i=1.399\%$ $L=368.026m$
NO.245+100	245+100.0	655.07	655.994	
NO.245+200	245+200.0	656.66	656.637	
NO.245+300	245+300.0	658.93	658.340	
NO.245+400	245+400.0	660.13	660.074	
NO.245+500	245+500.0	662.44	661.807	
NO.245+600	245+600.0	663.51	663.541	
NO.245+700	245+700.0	665.62	665.275	
NO.245+800	245+800.0	666.92	667.008	
NO.245+900	245+900.0	668.33	668.742	
NO.246+000	246+000.0	669.97	670.476	$i=1.734\%$ $L=1788.778m$
NO.246+100	246+100.0	671.43	672.209	
NO.246+200	246+200.0	672.97	673.943	
NO.246+300	246+300.0	674.55	675.676	
NO.246+400	246+400.0	676.34	677.410	
NO.246+500	246+500.0	678.42	679.144	
NO.246+600	246+600.0	680.48	680.877	
NO.246+700	246+700.0	682.36	682.611	
NO.246+800	246+800.0	683.74	684.231	
NO.246+900	246+900.0	684.51	684.767	
NO.247+000	247+000.0	683.27	683.995	
NO.247+100	247+100.0	681.52	682.029	
NO.247+200	247+200.0	679.67	679.840	$i=2.189\%$ $L=651.603m$
NO.247+300	247+300.0	677.25	677.651	
NO.247+400	247+400.0	675.35	675.462	
NO.247+500	247+500.0	673.22	673.272	

JICA JAPAN INTERNATIONAL COOPERATION AGENCY

ANR NATIONAL ROAD ADMINISTRATION

REMARKS:

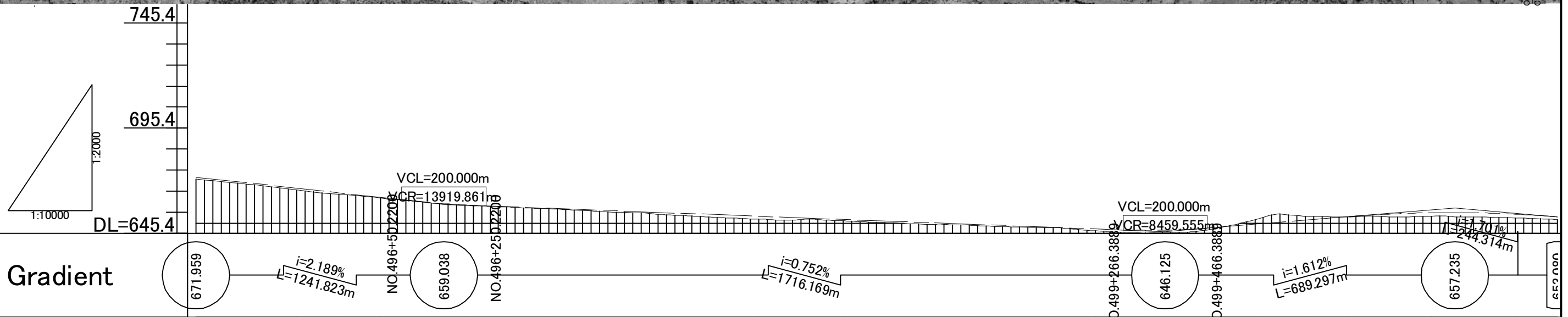
THE STUDY ON UPGRADING OF NAMPULA - CUAMBA ROAD

ORIENTAL CONSULTANTS CO., LTD.
JAPAN ENGINEERING CONSULTANTS CO., LTD.

DRAWING TITLE
Plan and Profile (82/115)

NAME	PREPARED BY	CHECKED BY	APPROVED BY
SIGNATURE			
DATE			

SCALE	SHEET NO.	DRAWING NO.	REV. NO.
1: 10,000		83	-



Station	Accumulative Length	Ground Height	Proposal Height
NO.247+500	247+500.0	671.20	671.959
NO.247+600	247+600.0	670.31	671.083
NO.247+700	247+700.0	668.29	668.894
NO.247+800	247+800.0	665.85	666.705
NO.247+900	247+900.0	663.74	664.516
NO.248+000	248+000.0	662.00	662.326
NO.248+100	248+100.0	660.06	660.226
NO.248+200	248+200.0	658.53	658.754
NO.248+300	248+300.0	657.76	657.911
NO.248+400	248+400.0	656.96	657.158
NO.248+500	248+500.0	655.95	656.406
NO.248+600	248+600.0	655.06	655.654
NO.248+700	248+700.0	653.89	654.901
NO.248+800	248+800.0	652.80	654.149
NO.248+900	248+900.0	652.00	653.396
NO.249+000	249+000.0	651.82	652.644
NO.249+100	249+100.0	651.24	651.892
NO.249+200	249+200.0	650.38	651.139
NO.249+300	249+300.0	649.53	650.387
NO.249+400	249+400.0	649.14	649.634
NO.249+500	249+500.0	648.37	648.882
NO.249+600	249+600.0	648.04	648.129
NO.249+700	249+700.0	646.46	647.377
NO.249+800	249+800.0	645.42	646.691
NO.249+900	249+900.0	645.69	646.927
NO.250+000	250+000.0	648.15	648.279
NO.250+100	250+100.0	652.85	649.890
NO.250+200	250+200.0	653.40	651.502
NO.250+300	250+300.0	653.12	653.114
NO.250+400	250+400.0	653.06	654.431
NO.250+500	250+500.0	653.42	655.087
NO.250+600	250+600.0	653.12	655.080
NO.250+700	250+700.0	652.65	654.411
NO.250+800	250+800.0	651.99	652.970

JICA JAPAN INTERNATIONAL COOPERATION AGENCY

ANR NATIONAL ROAD ADMINISTRATION

REMARKS:

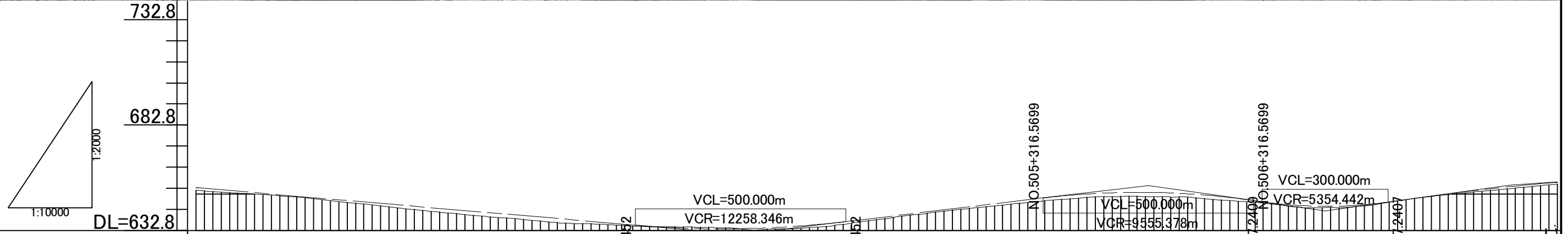
THE STUDY ON UPGRADING OF NAMPULA - CUAMBA ROAD

ORINTAL CONSULTANTS CO., LTD.
JAPAN ENGINEERING CONSULTANTS CO., LTD.

DRAWING TITLE
Plan and Profile (83/115)

NAME	PREPARED BY	CHECKED BY	APPROVED BY
SIGNATURE			
DATE			

SCALE	SHEET NO.	DRAWING NO.	REV. NO.
1: 10,000		84	-



Station	Ground Height	Proposal Height	Gradient	Accumulative Length
NO.250+800	651.83	653.079	653.080	250+800.0
NO.250+900	650.46	651.380		250+900.0
NO.251+000	649.23	649.679		251+000.0
NO.251+100	647.38	647.978		251+100.0
NO.251+200	645.29	646.278		251+200.0
NO.251+300	643.11	644.577		251+300.0
NO.251+400	641.10	642.876		251+400.0
NO.251+500	639.19	641.176	$i=1.701\%$ $L=1540.459m$	251+500.0
NO.251+600	637.60	639.475		251+600.0
NO.251+700	636.01	637.775		251+700.0
NO.251+800	635.30	636.074		251+800.0
NO.251+900	634.53	634.492		251+900.0
NO.252+000	634.27	633.638		252+000.0
NO.252+100	633.51	633.600		252+100.0
NO.252+200	633.49	634.379		252+200.0
NO.252+300	634.68	635.972		252+300.0
NO.252+400	637.46	638.264		252+400.0
NO.252+500	639.99	640.642		252+500.0
NO.252+600	642.41	643.020		252+600.0
NO.252+700	644.38	645.399		252+700.0
NO.252+800	646.45	647.777	$i=2.378\%$ $L=970.425m$	252+800.0
NO.252+900	648.12	649.791		252+900.0
NO.253+000	648.91	650.773		253+000.0
NO.253+100	648.75	650.708		253+100.0
NO.253+200	647.85	649.597		253+200.0
NO.253+300	646.35	647.439	$i=2.856\%$ $L=420.60m$	253+300.0
NO.253+400	644.30	644.967		253+400.0
NO.253+500	643.69	644.218		253+500.0
NO.253+600	644.89	645.337		253+600.0
NO.253+700	647.92	647.956	$i=2.748\%$ $L=41.458m$	253+700.0
NO.253+800	650.20	650.616		253+800.0
NO.253+900	652.14	652.941		253+900.0
NO.254+000	654.02	654.918		254+000.0
NO.254+100	654.79	655.611		254+100.0

JAPAN INTERNATIONAL COOPERATION AGENCY
 NATIONAL ROAD ADMINISTRATION

REMARKS:

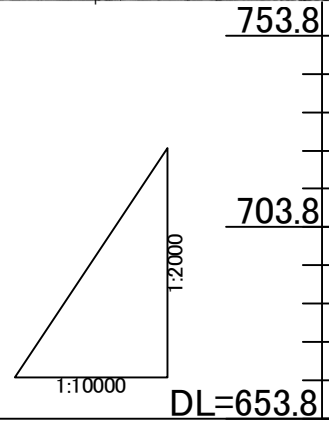
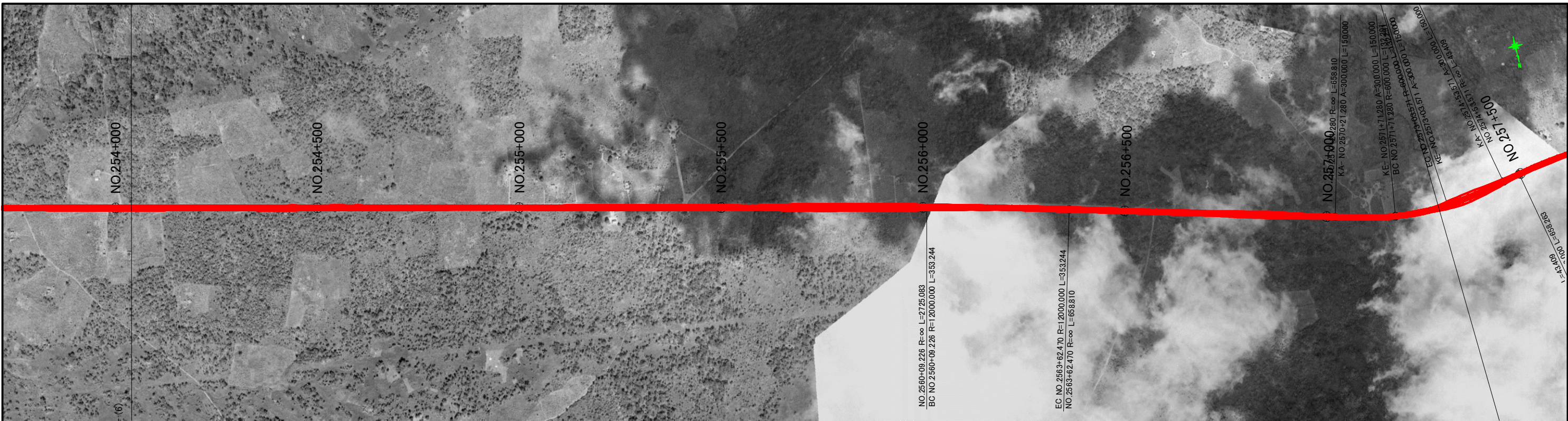
THE STUDY ON UPGRADING OF NAMPULA - CUAMBA ROAD

ORIENTAL CONSULTANTS CO., LTD.
 JAPAN ENGINEERING CONSULTANTS CO., LTD.

DRAWING TITLE
Plan and Profile (84/115)

NAME	PREPARED BY	CHECKED BY	APPROVED BY
SIGNATURE			
DATE			

SCALE	SHEET NO.	DRAWING NO.	REV. NO.
1: 10,000		85	-



Station	Accumulative Length	Ground Height	Proposal Height	Gradient
NO.254+040	254+040.0	654.73	655.611	655.748
NO.254+100	254+100.0	655.85	656.546	
NO.254+200	254+200.0	657.39	657.913	
NO.254+300	254+300.0	658.65	659.267	
NO.254+400	254+400.0	659.82	660.620	
NO.254+500	254+500.0	661.27	661.974	
NO.254+600	254+600.0	662.60	663.327	
NO.254+700	254+700.0	664.12	664.680	
NO.254+800	254+800.0	665.71	666.034	
NO.254+900	254+900.0	667.18	667.387	
NO.255+000	255+000.0	668.94	668.741	
NO.255+100	255+100.0	670.67	670.094	
NO.255+200	255+200.0	672.48	671.447	
NO.255+300	255+300.0	674.16	672.801	
NO.255+400	255+400.0	675.46	674.154	
NO.255+500	255+500.0	676.23	675.508	
NO.255+600	255+600.0	676.39	676.861	
NO.255+700	255+700.0	676.11	677.906	
NO.255+800	255+800.0	676.31	678.135	
NO.255+900	255+900.0	675.67	677.541	
NO.256+000	256+000.0	674.75	676.123	
NO.256+100	256+100.0	673.55	674.190	
NO.256+200	256+200.0	672.26	672.250	
NO.256+300	256+300.0	670.86	670.309	
NO.256+400	256+400.0	669.04	668.369	
NO.256+500	256+500.0	666.69	666.428	
NO.256+600	256+600.0	664.13	664.488	
NO.256+700	256+700.0	662.04	662.547	
NO.256+800	256+800.0	659.33	660.626	
NO.256+900	256+900.0	657.78	659.029	
NO.257+000	257+000.0	657.56	657.844	
NO.257+100	257+100.0	656.53	656.763	
NO.257+200	257+200.0	655.29	655.683	
NO.257+300	257+300.0	653.76	654.010	

JAPAN INTERNATIONAL COOPERATION AGENCY
 NATIONAL ROAD ADMINISTRATION

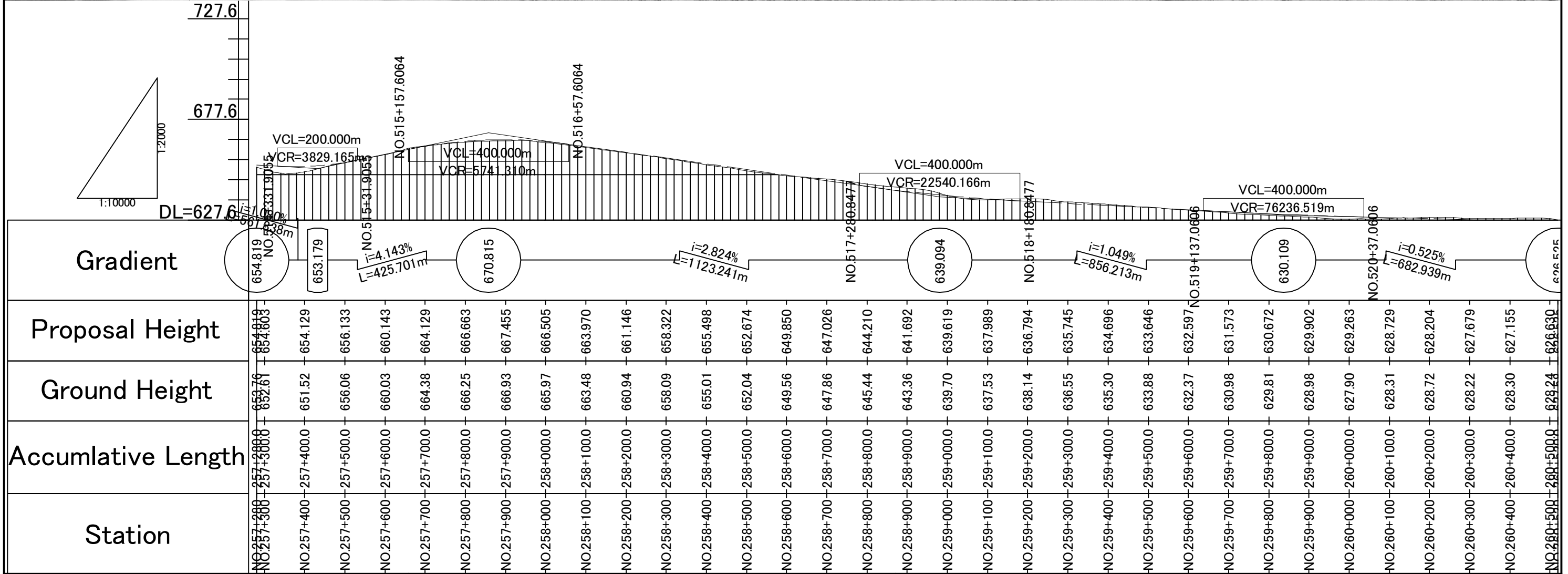
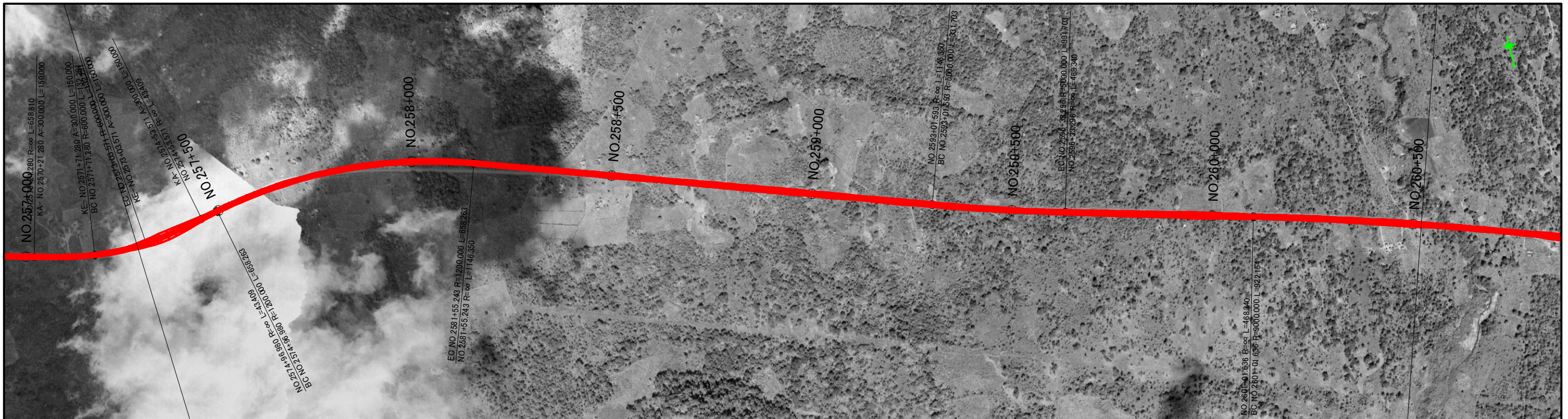
REMARKS:

THE STUDY ON UPGRADING OF NAMPULA - CUAMBA ROAD
 ORIENTAL CONSULTANTS CO., LTD.
 JAPAN ENGINEERING CONSULTANTS CO., LTD.

PREPARED BY			CHECKED BY			APPROVED BY		
NAME								
SIGNATURE								
DATE								

DRAWING TITLE: Plan and Profile (85/115)

SCALE	SHEET NO.	DRAWING NO.	REV. NO.
1: 10,000	86	86	-



Station	Accumulative Length	Ground Height	Proposal Height
NO.257+000	257+000	652.79	654.819
NO.257+100	257+100	652.61	654.803
NO.257+200	257+200	651.52	654.129
NO.257+300	257+300	656.06	656.133
NO.257+400	257+400	660.03	660.143
NO.257+500	257+500	664.38	664.129
NO.257+600	257+600	666.25	666.663
NO.257+700	257+700	666.93	667.455
NO.257+800	257+800	665.97	666.505
NO.257+900	257+900	663.48	663.970
NO.258+000	258+000	660.94	661.146
NO.258+100	258+100	658.09	658.322
NO.258+200	258+200	655.01	655.498
NO.258+300	258+300	652.04	652.674
NO.258+400	258+400	649.56	649.850
NO.258+500	258+500	647.86	647.026
NO.258+600	258+600	645.44	644.210
NO.258+700	258+700	643.36	641.692
NO.258+800	258+800	639.70	639.619
NO.258+900	258+900	637.53	637.989
NO.259+000	259+000	638.14	636.794
NO.259+100	259+100	636.55	635.745
NO.259+200	259+200	635.30	634.696
NO.259+300	259+300	633.88	633.646
NO.259+400	259+400	632.37	632.597
NO.259+500	259+500	630.98	631.573
NO.259+600	259+600	629.81	630.672
NO.259+700	259+700	628.98	629.902
NO.259+800	259+800	627.90	629.263
NO.259+900	259+900	628.31	628.729
NO.260+000	260+000	628.72	628.204
NO.260+100	260+100	628.22	627.679
NO.260+200	260+200	628.30	627.155
NO.260+300	260+300	628.24	626.630
NO.260+400	260+400	628.24	626.630
NO.260+500	260+500	628.24	626.630

JICA JAPAN INTERNATIONAL COOPERATION AGENCY

ANE NATIONAL ROAD ADMINISTRATION

REMARKS:

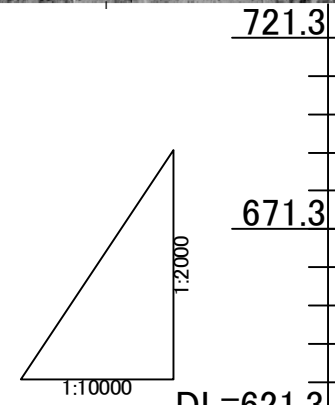
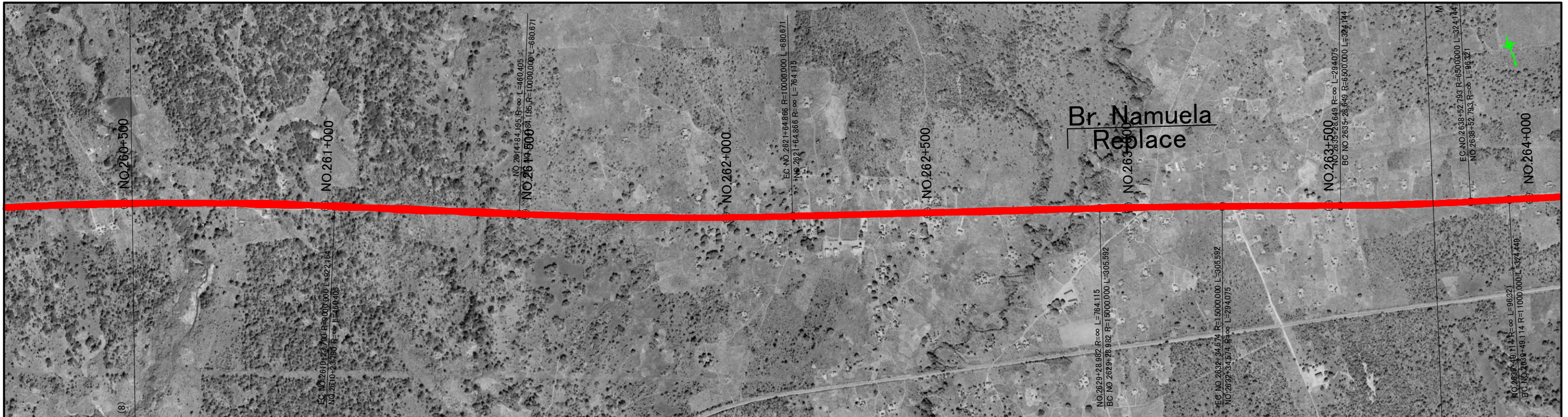
THE STUDY ON UPGRADING OF NAMPULA - CUAMBA ROAD

ORINTAL CONSULTANTS CO., LTD.
JAPAN ENGINEERING CONSULTANTS CO., LTD.

DRAWING TITLE
Plan and Profile (86/115)

NAME	PREPARED BY	CHECKED BY	APPROVED BY
SIGNATURE			
DATE			

SCALE	SHEET NO.	DRAWING NO.	REV. NO.
1: 10,000		87	-



Station	Accumulative Length	Ground Height	Proposal Height	Gradient
NO.260+520	260+520.0	627.58	626.525	
NO.260+600	260+600.0	626.24	626.105	
NO.260+700	260+700.0	625.78	625.580	
NO.260+800	260+800.0	624.48	625.056	
NO.260+900	260+900.0	623.31	624.531	
NO.261+000	261+000.0	623.57	624.006	
NO.261+100	261+100.0	623.48	623.481	
NO.261+200	261+200.0	625.39	622.956	
NO.261+300	261+300.0	623.33	622.639	
NO.261+400	261+400.0	621.45	622.748	
NO.261+500	261+500.0	622.85	623.285	
NO.261+600	261+600.0	623.88	624.250	
NO.261+700	261+700.0	625.02	625.435	
NO.261+800	261+800.0	626.07	626.620	
NO.261+900	261+900.0	627.50	627.805	
NO.262+000	262+000.0	628.80	628.799	
NO.262+100	262+100.0	629.07	629.183	
NO.262+200	262+200.0	628.47	628.943	
NO.262+300	262+300.0	628.15	628.269	
NO.262+400	262+400.0	627.94	627.580	
NO.262+500	262+500.0	627.51	626.892	
NO.262+600	262+600.0	625.69	626.387	
NO.262+700	262+700.0	625.35	626.187	
NO.262+800	262+800.0	625.56	626.112	
NO.262+900	262+900.0	626.61	626.887	
NO.263+000	263+000.0	630.90	629.535	
NO.263+100	263+100.0	630.40	630.754	
NO.263+200	263+200.0	630.59	630.479	
NO.263+300	263+300.0	630.63	630.953	
NO.263+400	263+400.0	632.68	632.548	
NO.263+500	263+500.0	632.82	632.999	
NO.263+600	263+600.0	631.98	632.542	
NO.263+700	263+700.0	631.50	632.079	
NO.263+800	263+800.0	631.46	631.000	

JAPAN INTERNATIONAL COOPERATION AGENCY
 NATIONAL ROAD ADMINISTRATION

REMARKS:

THE STUDY ON UPGRADING OF NAMPULA - CUAMBA ROAD

ORIENTAL CONSULTANTS CO., LTD.
 JAPAN ENGINEERING CONSULTANTS CO., LTD.

DRAWING TITLE
Plan and Profile (87/115)

NAME	PREPARED BY	CHECKED BY	APPROVED BY
SIGNATURE			
DATE			

SCALE	SHEET NO.	DRAWING NO.	REV. NO.
1: 10,000	88	88	-