

Station	Accumulative Length	Ground Height	Proposal Height
NO.201+960	201+960.0	631.65	630.012
NO.202+000	202+000.0	632.75	630.812
NO.202+100	202+100.0	635.37	632.810
NO.202+200	202+200.0	637.24	634.808
NO.202+300	202+300.0	639.30	636.806
NO.202+400	202+400.0	641.34	638.805
NO.202+500	202+500.0	643.18	640.803
NO.202+600	202+600.0	644.88	642.801
NO.202+700	202+700.0	646.69	644.799
NO.202+800	202+800.0	648.22	646.798
NO.202+900	202+900.0	649.71	648.796
NO.203+000	203+000.0	651.35	650.794
NO.203+100	203+100.0	653.04	652.792
NO.203+200	203+200.0	654.13	654.791
NO.203+300	203+300.0	655.37	656.789
NO.203+400	203+400.0	657.27	658.787
NO.203+500	203+500.0	658.93	660.786
NO.203+600	203+600.0	661.04	662.784
NO.203+700	203+700.0	663.08	664.782
NO.203+800	203+800.0	665.00	666.780
NO.203+900	203+900.0	666.98	668.779
NO.204+000	204+000.0	668.89	670.777
NO.204+100	204+100.0	670.98	672.775
NO.204+200	204+200.0	673.07	674.696
NO.204+300	204+300.0	675.09	675.954
NO.204+400	204+400.0	675.87	676.430
NO.204+500	204+500.0	676.08	676.201
NO.204+600	204+600.0	675.75	675.852
NO.204+700	204+700.0	675.27	675.503
NO.204+800	204+800.0	674.92	675.153
NO.204+900	204+900.0	674.27	674.804
NO.205+000	205+000.0	674.16	674.495
NO.205+100	205+100.0	674.75	674.341
NO.205+200	205+200.0	674.91	674.250

Gradient

630.012

$i=1.998\%$
 $L=2872.931m$

676.881

$i=0.349\%$
 $L=874.622m$

673.826

JICA JAPAN INTERNATIONAL COOPERATION AGENCY

ANR NATIONAL ROAD ADMINISTRATION

REMARKS:

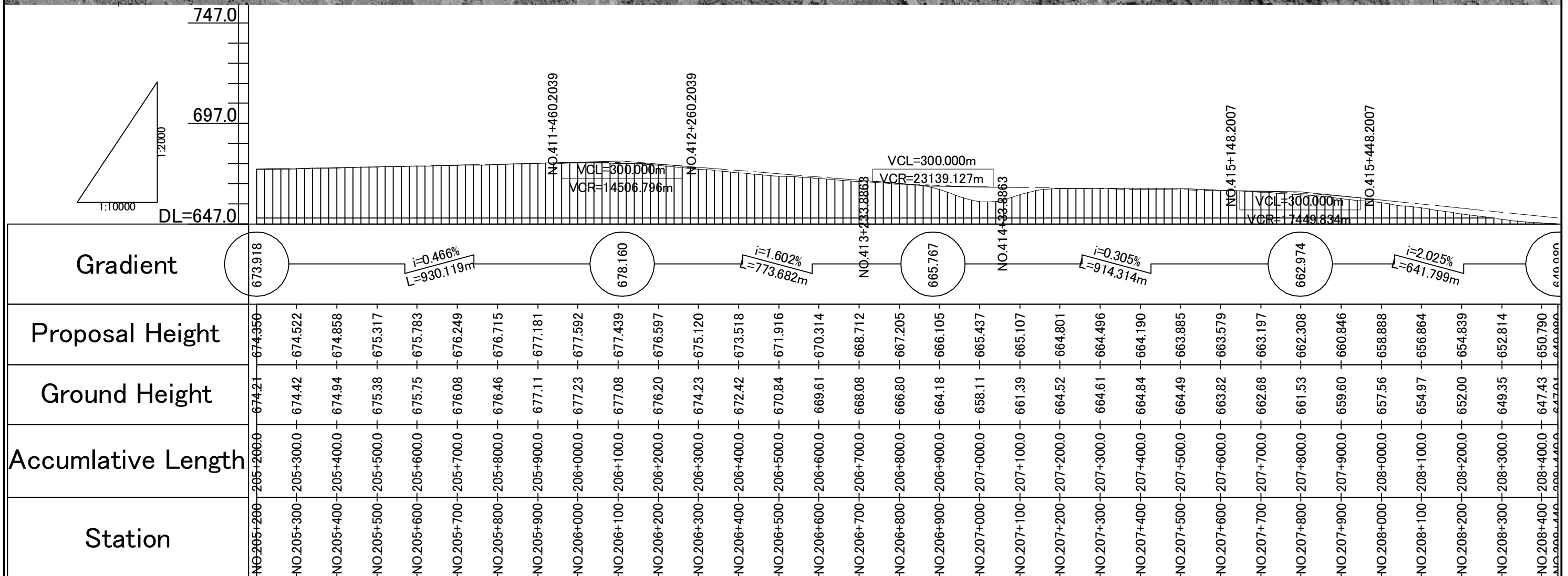
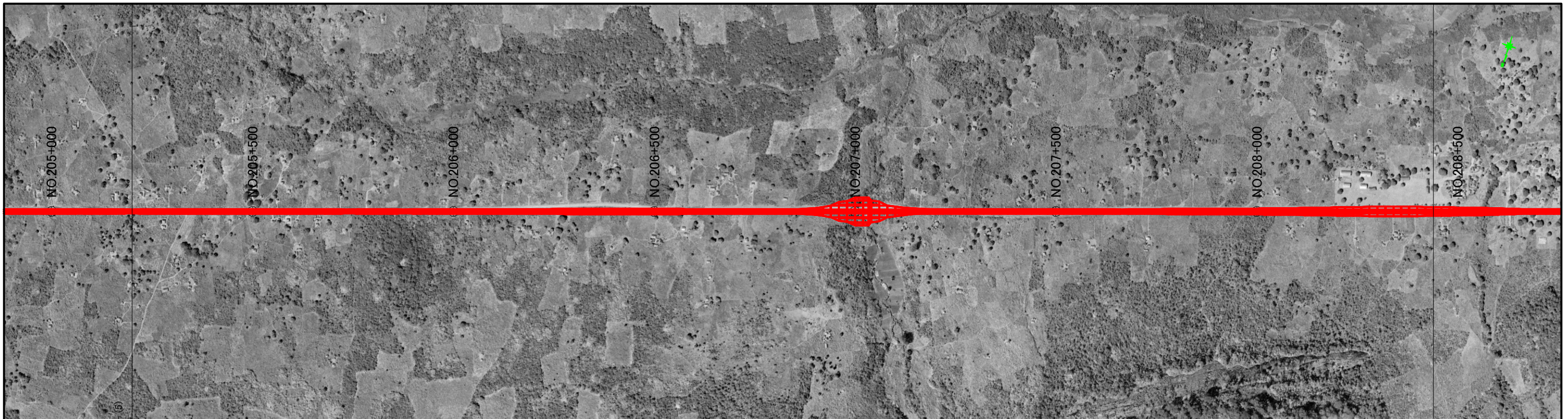
THE STUDY ON UPGRADING OF NAMPULA - CUAMBA ROAD

ORINTAL CONSULTANTS CO., LTD.
JAPAN ENGINEERING CONSULTANTS CO., LTD.

DRAWING TITLE
Plan and Profile (68/115)

NAME	PREPARED BY	CHECKED BY	APPROVED BY
SIGNATURE			
DATE			

SCALE	SHEET NO.	DRAWING NO.	REV. NO.
1: 10,000		69	-



JICA JAPAN INTERNATIONAL COOPERATION AGENCY

ANR NATIONAL ROAD ADMINISTRATION

REMARKS:

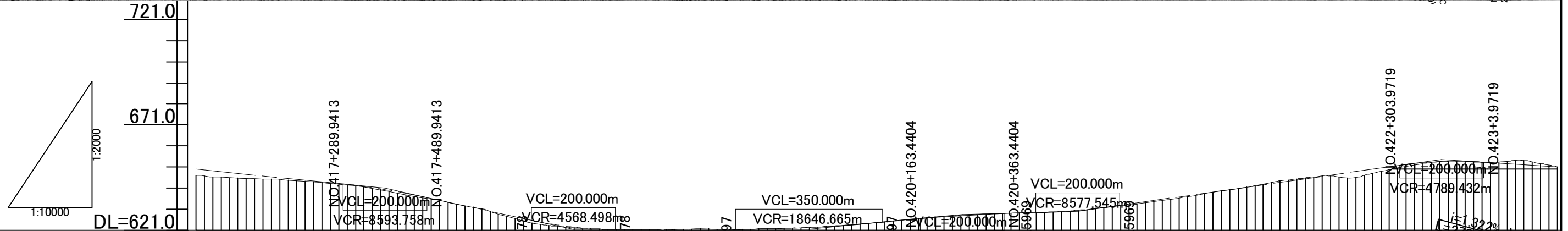
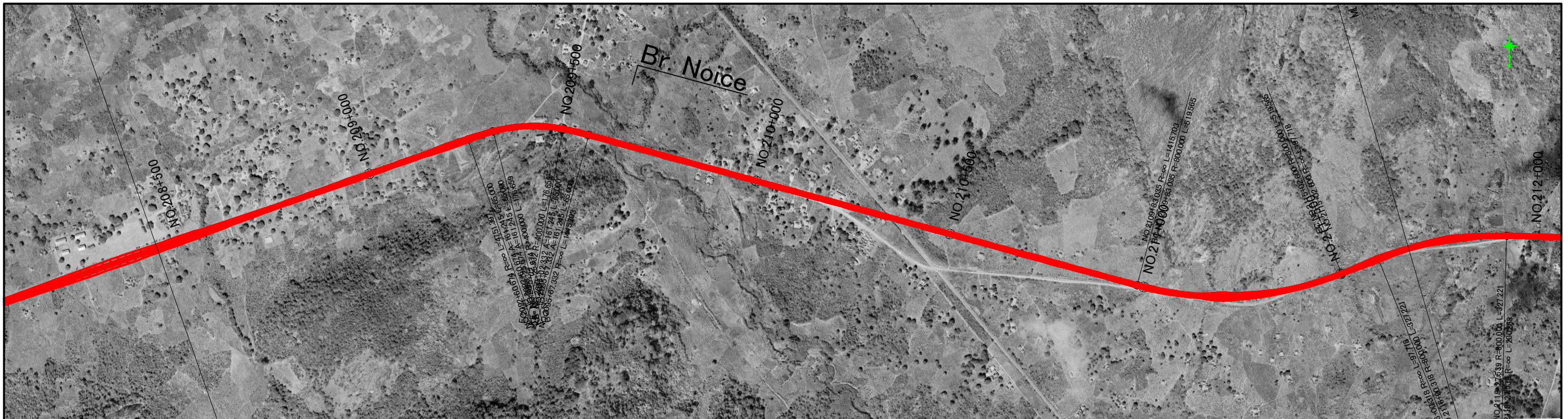
THE STUDY ON UPGRADING OF NAMPULA - CUAMBA ROAD

ORIENTAL CONSULTANTS CO., LTD.
JAPAN ENGINEERING CONSULTANTS CO., LTD.

DRAWING TITLE
Plan and Profile (69/115)

NAME	PREPARED BY	CHECKED BY	APPROVED BY
SIGNATURE			
DATE			

SCALE	SHEET NO.	DRAWING NO.	REV. NO.
1: 10,000	70	70	-



Station	Ground Height	Proposal Height	Gradient
NO.208+440	647.01	649.980	649.980
NO.208+500	646.14	648.765	$i=2.025\%$ $L=1091.741m$
NO.208+600	645.12	646.740	640.870
NO.208+700	644.28	644.716	$i=4.352\%$ $L=448.077m$
NO.208+800	642.28	642.685	621.370
NO.208+900	639.34	639.962	$i=0.026\%$ $L=560.642m$
NO.209+000	635.74	636.080	621.515
NO.209+100	631.84	631.729	$i=1.903\%$ $L=364.281m$
NO.209+200	626.37	627.377	628.457
NO.209+300	622.81	623.445	$i=0.504\%$ $L=275.256m$
NO.209+400	621.32	621.544	629.892
NO.209+500	621.21	621.412	$i=2.853\%$ $L=865.375m$
NO.209+600	621.38	621.438	654.585
NO.209+700	621.37	621.464	
NO.209+800	621.60	621.646	
NO.209+900	622.26	622.350	
NO.210+000	623.47	623.589	
NO.210+100	625.23	625.347	
NO.210+200	627.04	627.203	
NO.210+300	628.14	628.509	
NO.210+400	629.16	629.169	
NO.210+500	629.70	629.911	
NO.210+600	631.79	631.731	
NO.210+700	633.93	634.498	
NO.210+800	636.89	637.351	
NO.210+900	640.22	640.205	
NO.211+000	643.63	643.058	
NO.211+100	646.24	645.911	
NO.211+200	646.02	648.765	
NO.211+300	650.50	651.618	
NO.211+400	653.49	653.509	
NO.211+500	653.10	653.313	
NO.211+600	654.01	651.992	
NO.211+900	651.10	650.024	

JAPAN INTERNATIONAL COOPERATION AGENCY
 NATIONAL ROAD ADMINISTRATION

REMARKS:

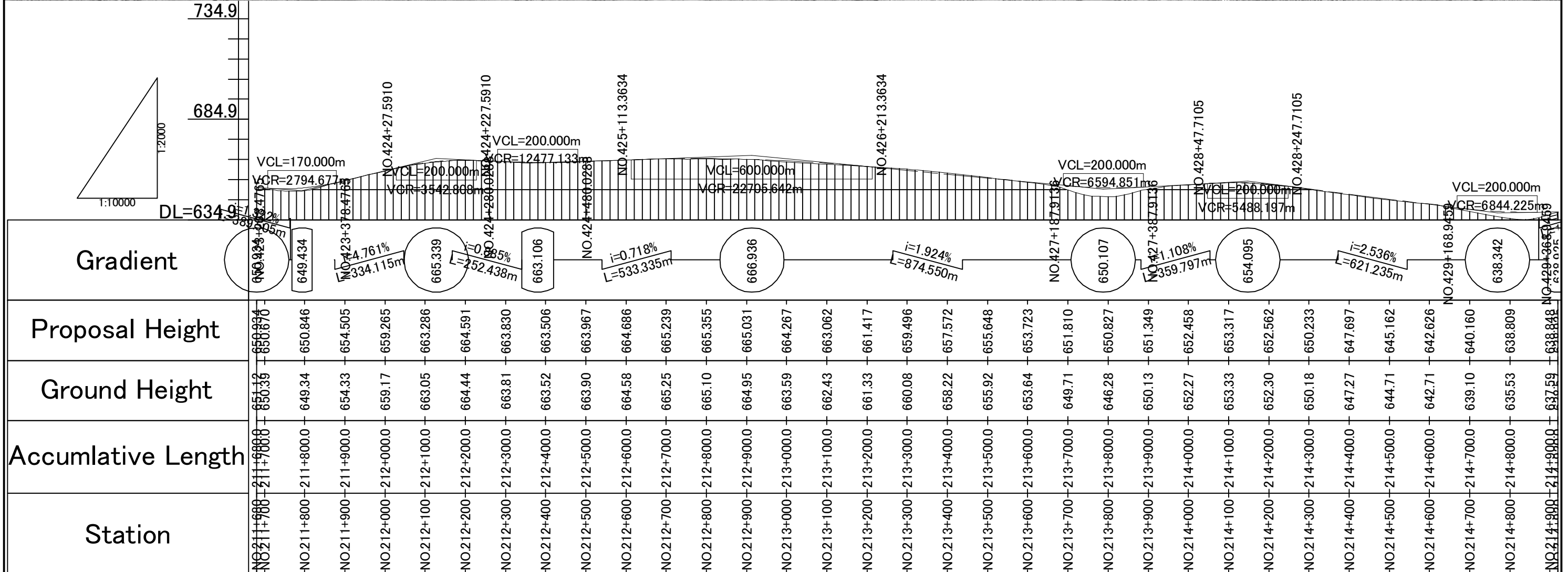
THE STUDY ON UPGRADING OF NAMPULA - CUAMBA ROAD

ORIENTAL CONSULTANTS CO., LTD.
 JAPAN ENGINEERING CONSULTANTS CO., LTD.

DRAWING TITLE
Plan and Profile (70/115)

PREPARED BY	CHECKED BY	APPROVED BY
NAME		
SIGNATURE		
DATE		

SCALE	SHEET NO.	DRAWING NO.	REV. NO.
1: 10,000	71		-



Station	Accumulative Length	Ground Height	Proposal Height
NO.211+800	211+800.0	651.39	650.894
NO.211+900	211+900.0	654.33	654.505
NO.212+000	212+000.0	659.17	659.265
NO.212+100	212+100.0	663.05	663.286
NO.212+200	212+200.0	664.44	664.591
NO.212+300	212+300.0	663.81	663.830
NO.212+400	212+400.0	663.52	663.506
NO.212+500	212+500.0	663.90	663.967
NO.212+600	212+600.0	664.58	664.686
NO.212+700	212+700.0	665.25	665.239
NO.212+800	212+800.0	665.10	665.355
NO.212+900	212+900.0	664.95	665.031
NO.213+000	213+000.0	663.59	664.267
NO.213+100	213+100.0	662.43	663.062
NO.213+200	213+200.0	661.33	661.417
NO.213+300	213+300.0	660.08	659.496
NO.213+400	213+400.0	658.22	657.572
NO.213+500	213+500.0	655.92	655.648
NO.213+600	213+600.0	653.64	653.723
NO.213+700	213+700.0	649.71	651.810
NO.213+800	213+800.0	646.28	650.827
NO.213+900	213+900.0	650.13	651.349
NO.214+000	214+000.0	652.27	652.458
NO.214+100	214+100.0	653.33	653.317
NO.214+200	214+200.0	652.30	652.562
NO.214+300	214+300.0	650.18	650.233
NO.214+400	214+400.0	647.27	647.697
NO.214+500	214+500.0	644.71	645.162
NO.214+600	214+600.0	642.71	642.626
NO.214+700	214+700.0	639.10	640.160
NO.214+800	214+800.0	635.53	638.809
NO.214+900	214+900.0	637.59	638.848

JAPAN INTERNATIONAL COOPERATION AGENCY
 NATIONAL ROAD ADMINISTRATION

REMARKS:

THE STUDY ON UPGRADING OF NAMPULA - CUAMBA ROAD

ORIENTAL CONSULTANTS CO., LTD.
 JAPAN ENGINEERING CONSULTANTS CO., LTD.

DRAWING TITLE
Plan and Profile (71/115)

NAME	PREPARED BY	CHECKED BY	APPROVED BY
SIGNATURE			
DATE			

SCALE	SHEET NO.	DRAWING NO.	REV. NO.
1: 10,000		72	-