

Station	Proposal Height	Ground Height	Accumulative Length
NO.189+000	582.302	580.62	189+000.0
NO.189+100	583.343	582.07	189+100.0
NO.189+200	584.385	582.94	189+200.0
NO.189+300	585.427	583.94	189+300.0
NO.189+400	586.468	586.01	189+400.0
NO.189+500	587.510	587.68	189+500.0
NO.189+600	588.552	589.25	189+600.0
NO.189+700	589.593	589.65	189+700.0
NO.189+800	590.635	589.47	189+800.0
NO.189+900	591.676	589.77	189+900.0
NO.190+000	592.718	591.28	190+000.0
NO.190+100	593.760	594.01	190+100.0
NO.190+200	594.801	594.63	190+200.0
NO.190+300	595.803	596.06	190+300.0
NO.190+400	595.345	599.67	190+400.0
NO.190+500	592.763	595.05	190+500.0
NO.190+600	589.475	588.95	190+600.0
NO.190+700	586.500	584.59	190+700.0
NO.190+800	584.885	584.50	190+800.0
NO.190+900	584.397	585.62	190+900.0
NO.191+000	583.993	584.44	191+000.0
NO.191+100	583.588	583.52	191+100.0
NO.191+200	583.324	582.87	191+200.0
NO.191+300	585.127	584.60	191+300.0
NO.191+400	589.471	590.11	191+400.0
NO.191+500	594.325	595.95	191+500.0
NO.191+600	594.975	595.13	191+600.0
NO.191+700	590.770	590.36	191+700.0
NO.191+800	586.242	585.95	191+800.0
NO.191+900	581.715	581.64	191+900.0
NO.192+000	579.132	579.00	192+000.0
NO.192+100	580.658	580.65	192+100.0
NO.192+200	584.350	584.13	192+200.0
NO.192+300	585.997	585.70	192+300.0

JICA JAPAN INTERNATIONAL COOPERATION AGENCY

ANR NATIONAL ROAD ADMINISTRATION

REMARKS:

THE STUDY ON UPGRADING OF NAMPULA - CUAMBA ROAD

ORIENTAL CONSULTANTS CO., LTD.

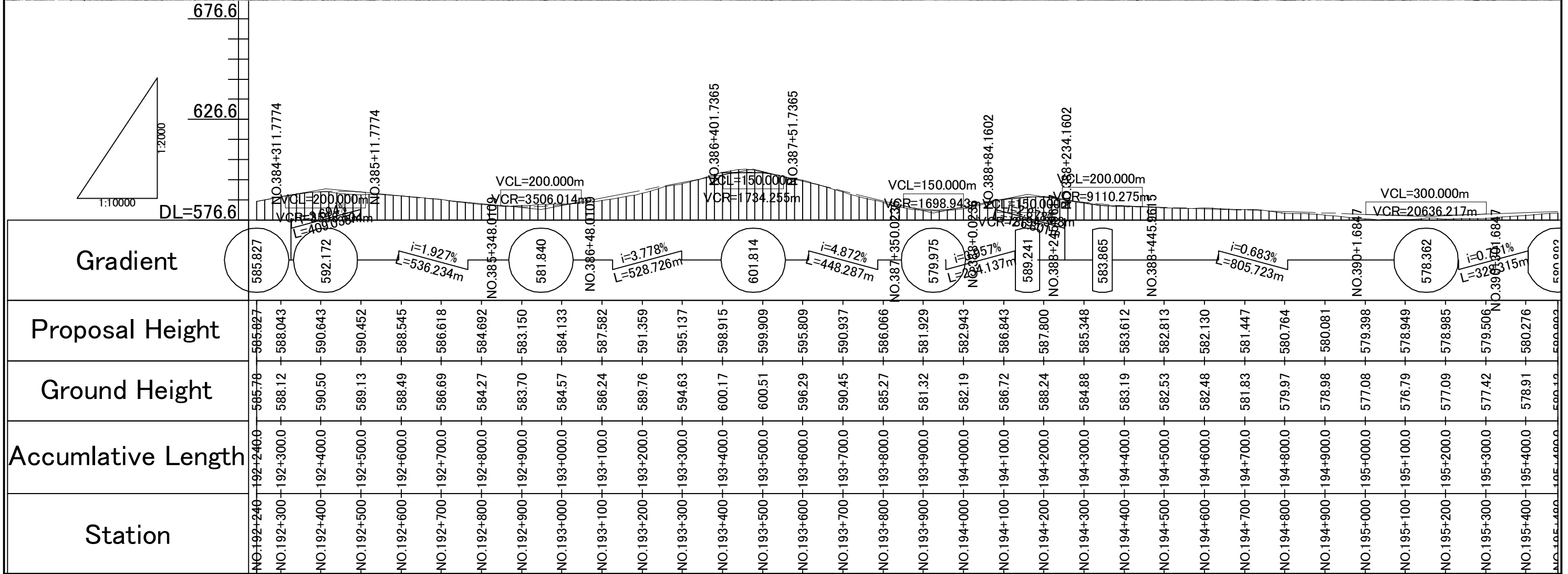
JAPAN ENGINEERING CONSULTANTS CO., LTD.

DRAWING TITLE

Plan and Profile (64/115)

PREPARED BY	CHECKED BY	APPROVED BY
NAME		
SIGNATURE		
DATE		

SCALE	SHEET NO.	DRAWING NO.	REV. NO.
1: 10,000		65	-



JICA JAPAN INTERNATIONAL COOPERATION AGENCY

ANR NATIONAL ROAD ADMINISTRATION

REMARKS:

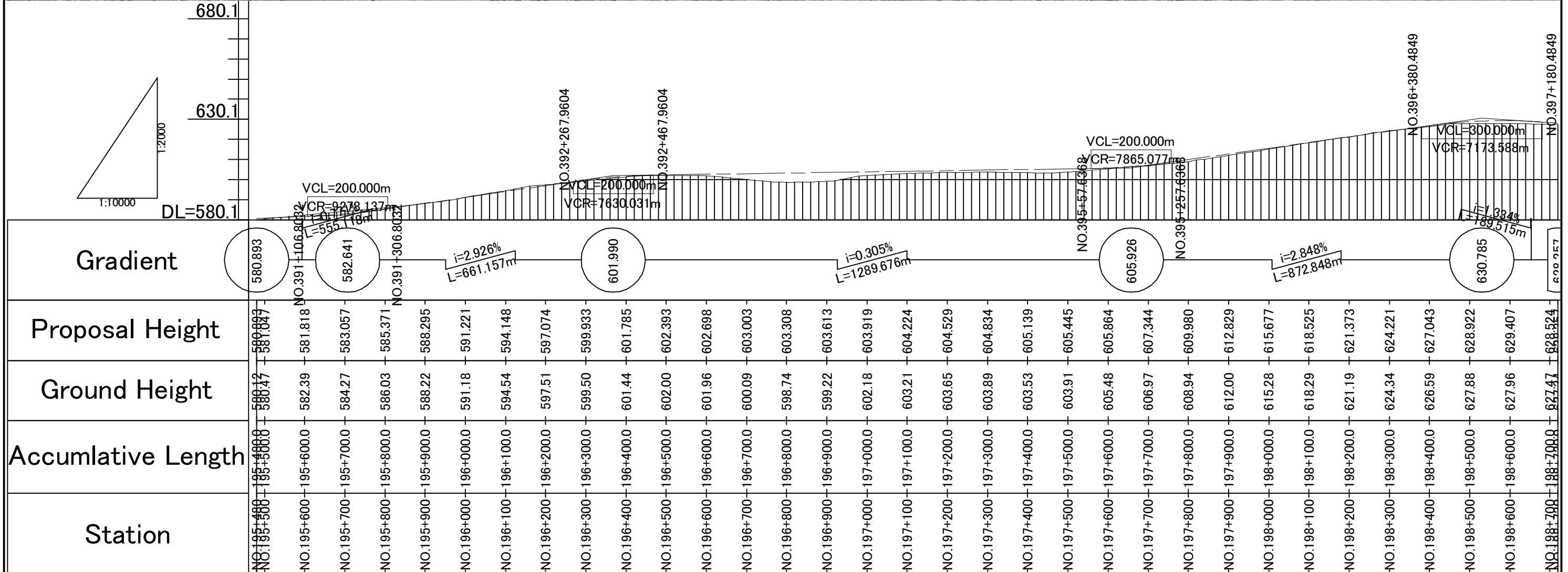
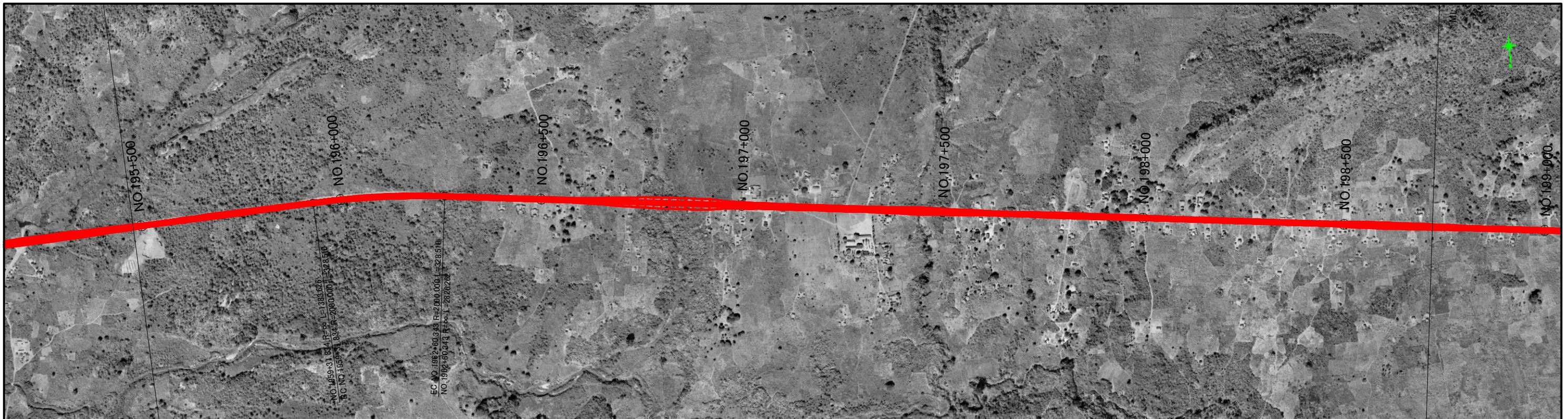
THE STUDY ON UPGRADING OF NAMPULA - CUAMBA ROAD

ORIENTAL CONSULTANTS CO., LTD.
JAPAN ENGINEERING CONSULTANTS CO., LTD.

DRAWING TITLE
Plan and Profile (65/115)

NAME	PREPARED BY	CHECKED BY	APPROVED BY
SIGNATURE			
DATE			

SCALE	SHEET NO.	DRAWING NO.	REV. NO.
1: 10,000		66	-



Station	Accumulative Length	Ground Height	Proposal Height	Gradient
NO.195+500	195+500.0	580.47	580.893	DL=580.1
NO.195+600	195+600.0	582.39	581.818	VCL=200.000m CR=9278.137m VCR=7630.031m L=555.16m
NO.195+700	195+700.0	584.27	583.057	601.990
NO.195+800	195+800.0	586.03	585.371	i=2.926% L=661.157m
NO.195+900	195+900.0	588.22	588.295	605.926
NO.196+000	196+000.0	591.18	591.221	i=0.305% L=1289.676m
NO.196+100	196+100.0	594.54	594.148	630.785
NO.196+200	196+200.0	597.51	597.074	VCL=200.000m CR=7865.077m VCR=7173.588m L=872.848m
NO.196+300	196+300.0	599.50	599.933	NO.392+267.9604
NO.196+400	196+400.0	601.44	601.785	NO.392+467.9604
NO.196+500	196+500.0	602.00	602.393	
NO.196+600	196+600.0	601.96	602.698	
NO.196+700	196+700.0	600.09	603.003	
NO.196+800	196+800.0	598.74	603.308	
NO.196+900	196+900.0	599.22	603.613	
NO.197+000	197+000.0	602.18	603.919	
NO.197+100	197+100.0	603.21	604.224	
NO.197+200	197+200.0	603.65	604.529	
NO.197+300	197+300.0	603.89	604.834	
NO.197+400	197+400.0	603.53	605.139	
NO.197+500	197+500.0	603.91	605.445	
NO.197+600	197+600.0	605.48	605.864	
NO.197+700	197+700.0	606.97	607.344	
NO.197+800	197+800.0	608.94	609.980	
NO.197+900	197+900.0	612.00	612.829	
NO.198+000	198+000.0	615.28	615.677	
NO.198+100	198+100.0	618.29	618.525	
NO.198+200	198+200.0	621.19	621.373	
NO.198+300	198+300.0	624.34	624.221	
NO.198+400	198+400.0	626.59	627.043	
NO.198+500	198+500.0	627.88	628.922	
NO.198+600	198+600.0	627.96	629.407	
NO.198+700	198+700.0	627.47	628.524	

JICA JAPAN INTERNATIONAL COOPERATION AGENCY

ANR NATIONAL ROAD ADMINISTRATION

REMARKS:

THE STUDY ON UPGRADING OF NAMPULA - CUAMBA ROAD

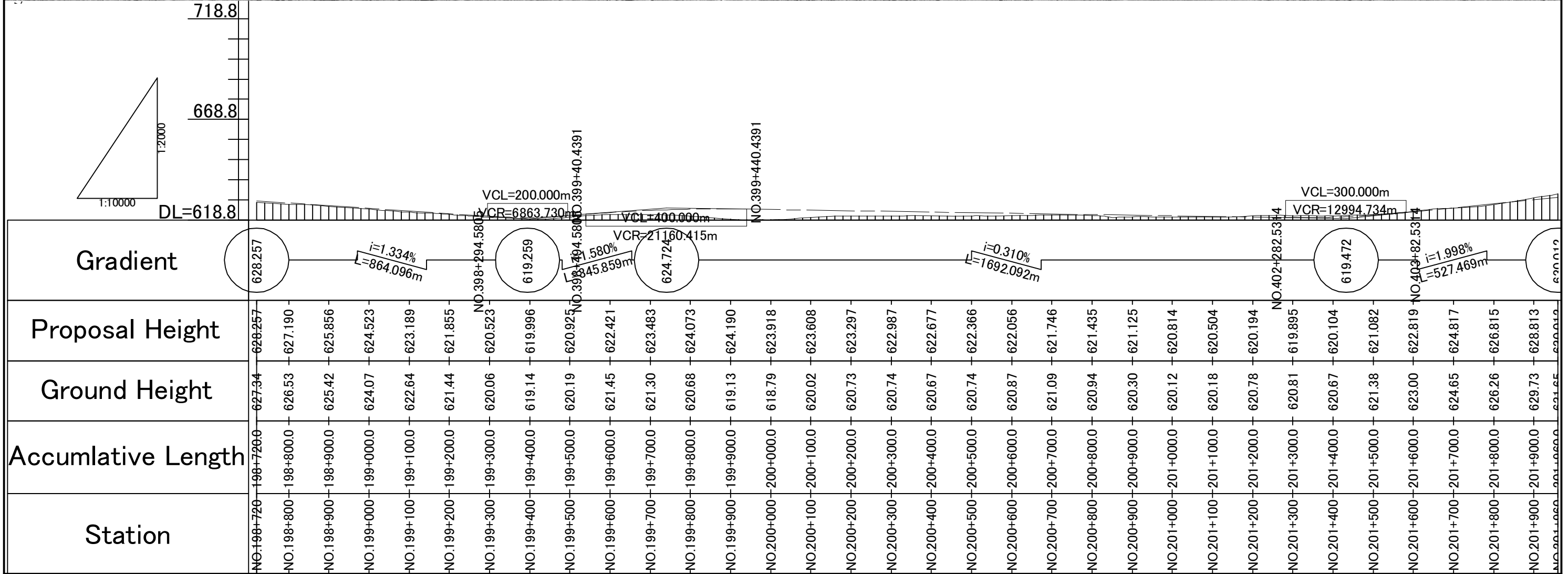
ORIENTAL CONSULTANTS CO., LTD.

JAPAN ENGINEERING CONSULTANTS CO., LTD.

DRAWING TITLE: Plan and Profile (66/115)

PREPARED BY	CHECKED BY	APPROVED BY
NAME		
SIGNATURE		
DATE		

SCALE	SHEET NO.	DRAWING NO.	REV. NO.
1: 10,000	67		-





Station	Accumulative Length	Ground Height	Proposal Height
NO.198+720	198+720.0	627.34	628.257
NO.198+800	198+800.0	626.53	627.190
NO.198+900	198+900.0	625.42	625.856
NO.199+000	199+000.0	624.07	624.523
NO.199+100	199+100.0	622.64	623.189
NO.199+200	199+200.0	621.44	621.855
NO.199+300	199+300.0	620.06	620.523
NO.199+400	199+400.0	619.14	619.996
NO.199+500	199+500.0	620.19	620.925
NO.199+600	199+600.0	621.45	622.421
NO.199+700	199+700.0	621.30	623.483
NO.199+800	199+800.0	620.68	624.073
NO.199+900	199+900.0	619.13	624.190
NO.200+000	200+000.0	618.79	623.918
NO.200+100	200+100.0	620.02	623.608
NO.200+200	200+200.0	620.73	623.297
NO.200+300	200+300.0	620.74	622.987
NO.200+400	200+400.0	620.67	622.677
NO.200+500	200+500.0	620.74	622.366
NO.200+600	200+600.0	620.87	622.056
NO.200+700	200+700.0	621.09	621.746
NO.200+800	200+800.0	620.94	621.435
NO.200+900	200+900.0	620.30	621.125
NO.201+000	201+000.0	620.12	620.814
NO.201+100	201+100.0	620.18	620.504
NO.201+200	201+200.0	620.78	620.194
NO.201+300	201+300.0	620.81	619.895
NO.201+400	201+400.0	620.67	620.104
NO.201+500	201+500.0	621.38	621.082
NO.201+600	201+600.0	623.00	622.819
NO.201+700	201+700.0	624.65	624.817
NO.201+800	201+800.0	626.26	626.815
NO.201+900	201+900.0	629.73	628.813
NO.202+000	202+000.0	631.45	630.410

 JAPAN INTERNATIONAL COOPERATION AGENCY
 NATIONAL ROAD ADMINISTRATION

REMARKS:

THE STUDY ON UPGRADING OF NAMPULA - CUAMBA ROAD

 ORIENTAL CONSULTANTS CO., LTD.
 JAPAN ENGINEERING CONSULTANTS CO., LTD.

DRAWING TITLE
Plan and Profile (67/115)

NAME	PREPARED BY	CHECKED BY	APPROVED BY
SIGNATURE			
DATE			

SCALE	SHEET NO.	DRAWING NO.	REV. NO.
1: 10,000		68	-