

Station	Accumulative Length	Ground Height	Proposal Height	Gradient
NO.164+240	164+240.0	606.42	605.893	605.893
NO.164+300	164+300.0	605.58	605.293	$i=1.001\%$ $L=475.858m$
NO.164+400	164+400.0	603.67	604.292	NO.329+209.355
NO.164+500	164+500.0	602.89	603.291	602.197
NO.164+600	164+600.0	603.01	602.705	$i=1.019\%$ $L=543.603m$
NO.164+700	164+700.0	602.61	603.125	NO.330+52.9586
NO.164+800	164+800.0	603.76	604.139	VCL=200.000m VCR=24486.121m
NO.164+900	164+900.0	605.56	605.158	NO.330+299.355
NO.165+000	165+000.0	604.43	606.176	607.735
NO.165+100	165+100.0	605.37	607.150	$i=1.019\%$ $L=2160.914m$
NO.165+200	165+200.0	607.67	607.772	608.171
NO.165+300	165+300.0	607.93	608.037	$i=4.851\%$ $L=354.945m$
NO.165+400	165+400.0	609.80	609.973	NO.331+148.9945
NO.165+500	165+500.0	614.45	614.524	VCL=150.000m VCR=3580.724m
NO.165+600	165+600.0	619.23	619.375	NO.331+298.9945
NO.165+700	165+700.0	623.74	623.863	625.391
NO.165+800	165+800.0	626.09	625.894	$i=0.682\%$ $L=362.598m$
NO.165+900	165+900.0	626.10	626.556	NO.332+236.5930
NO.166+000	166+000.0	627.14	627.397	VCL=300.000m VCR=11232.666m
NO.166+100	166+100.0	629.09	629.069	627.792
NO.166+200	166+200.0	631.50	631.631	NO.332+418.2160
NO.166+300	166+300.0	634.59	634.905	VCL=500.000m VCR=7281.899m
NO.166+400	166+400.0	638.05	638.238	NO.333+418.2160
NO.166+500	166+500.0	640.70	641.112	647.177
NO.166+600	166+600.0	641.95	642.635	$i=3.533\%$ $L=811.784m$
NO.166+700	166+700.0	642.13	642.785	NO.167+400
NO.166+800	166+800.0	641.86	641.562	
NO.166+900	166+900.0	638.82	638.965	
NO.167+000	167+000.0	635.59	635.455	
NO.167+100	167+100.0	632.21	631.921	
NO.167+200	167+200.0	628.45	628.388	
NO.167+300	167+300.0	624.75	624.855	
NO.167+400	167+400.0	621.33	621.321	
NO.167+500	167+500.0	619.40	619.405	

JICA JAPAN INTERNATIONAL COOPERATION AGENCY

ANE NATIONAL ROAD ADMINISTRATION

REMARKS:

THE STUDY ON UPGRADING OF NAMPULA - CUAMBA ROAD

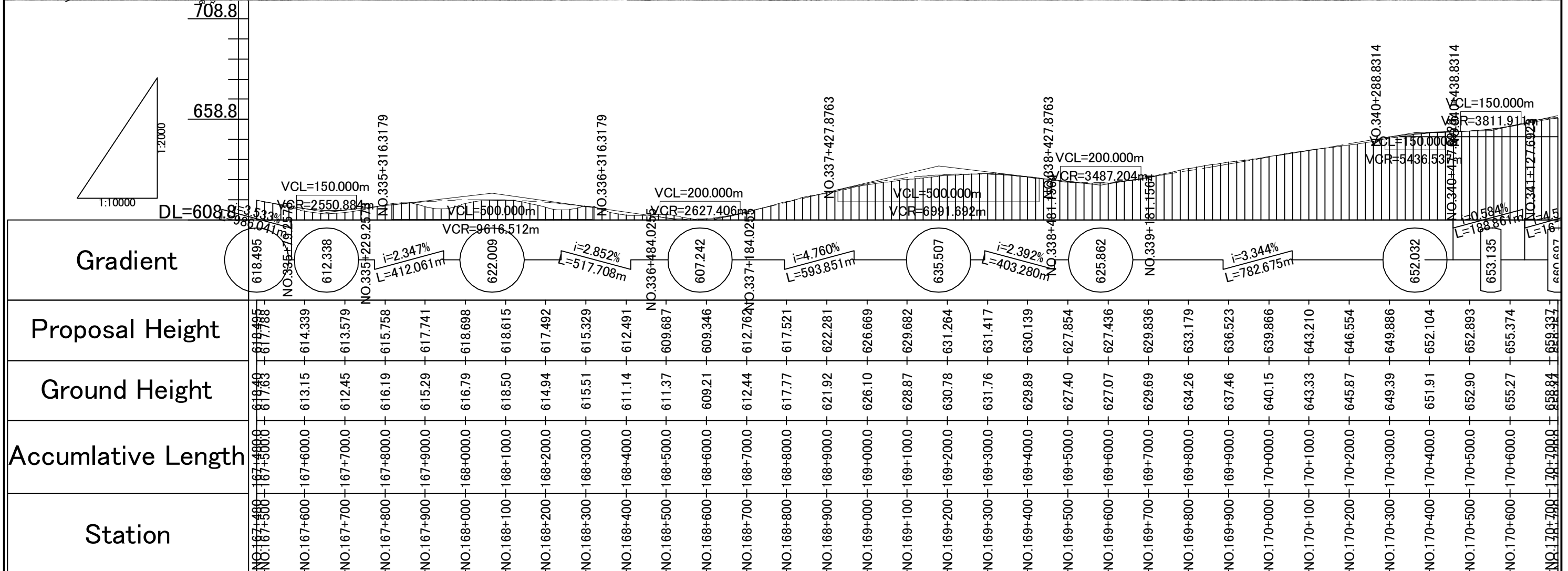
ORIENTAL CONSULTANTS CO., LTD.

JAPAN ENGINEERING CONSULTANTS CO., LTD.

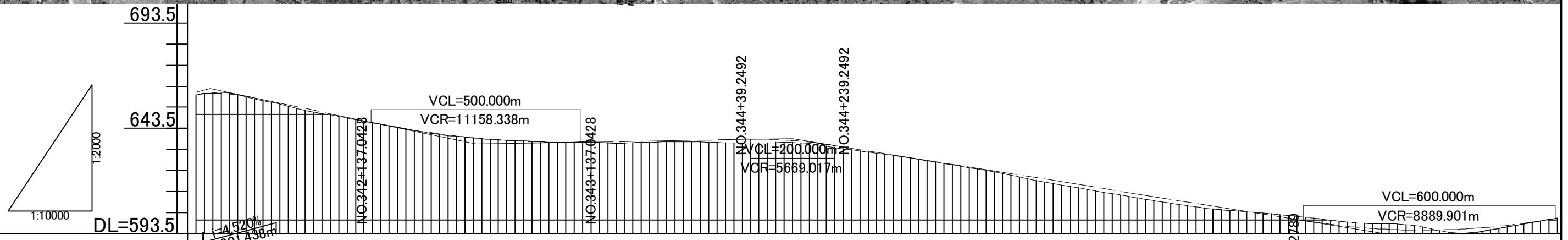
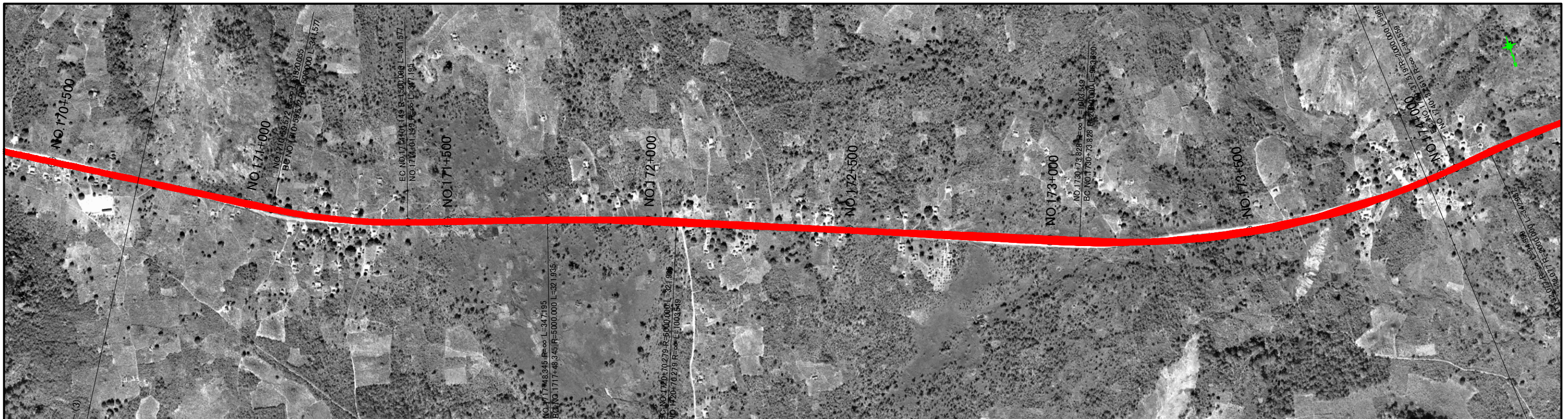
DRAWING TITLE: Plan and Profile (56/115)

PREPARED BY	CHECKED BY	APPROVED BY
NAME		
SIGNATURE		
DATE		

SCALE	SHEET NO.	DRAWING NO.	REV. NO.
1: 10,000		57	-

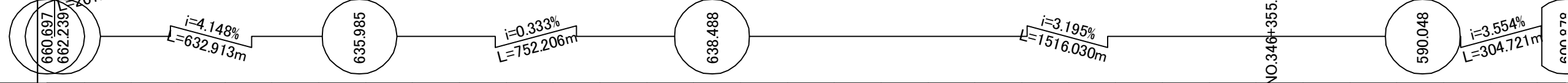


JAPAN INTERNATIONAL COOPERATION AGENCY NATIONAL ROAD ADMINISTRATION	REMARKS:	THE STUDY ON UPGRADING OF NAMPULA - CUAMBA ROAD			
		ORIENTAL CONSULTANTS CO., LTD. JAPAN ENGINEERING CONSULTANTS CO., LTD.		DRAWING TITLE Plan and Profile (57/115)	
		PREPARED BY	CHECKED BY	APPROVED BY	SCALE 1: 10,000
		NAME			SHEET NO. 58
		SIGNATURE			DRAWING NO. -
		DATE			REV. NO. -



Station	Accumulative Length	Ground Height	Proposal Height
NO.170+720	170+720.0	659.44	659.757
NO.170+800	170+800.0	660.30	659.702
NO.170+900	170+900.0	655.81	656.188
NO.171+000	171+000.0	651.15	652.040
NO.171+100	171+100.0	647.59	647.892
NO.171+200	171+200.0	643.90	643.922
NO.171+300	171+300.0	640.49	640.786
NO.171+400	171+400.0	638.49	638.546
NO.171+500	171+500.0	637.42	637.202
NO.171+600	171+600.0	636.73	636.755
NO.171+700	171+700.0	636.48	637.026
NO.171+800	171+800.0	636.84	637.359
NO.171+900	171+900.0	637.00	637.692
NO.172+000	172+000.0	636.53	638.025
NO.172+100	172+100.0	636.64	638.032
NO.172+200	172+200.0	635.60	636.411
NO.172+300	172+300.0	632.66	633.352
NO.172+400	172+400.0	629.96	630.157
NO.172+500	172+500.0	626.67	626.962
NO.172+600	172+600.0	623.47	623.766
NO.172+700	172+700.0	619.36	620.571
NO.172+800	172+800.0	615.86	617.376
NO.172+900	172+900.0	612.36	614.181
NO.173+000	173+000.0	609.11	610.986
NO.173+100	173+100.0	606.10	607.790
NO.173+200	173+200.0	604.09	604.595
NO.173+300	173+300.0	602.42	601.400
NO.173+400	173+400.0	600.29	598.317
NO.173+500	173+500.0	598.29	596.188
NO.173+600	173+600.0	597.69	595.183
NO.173+700	173+700.0	594.14	595.303
NO.173+800	173+800.0	595.27	596.548
NO.173+900	173+900.0	598.82	598.918
NO.172+900	172+900.0	600.76	600.970

Gradient



JICA JAPAN INTERNATIONAL COOPERATION AGENCY

ANR NATIONAL ROAD ADMINISTRATION

REMARKS:

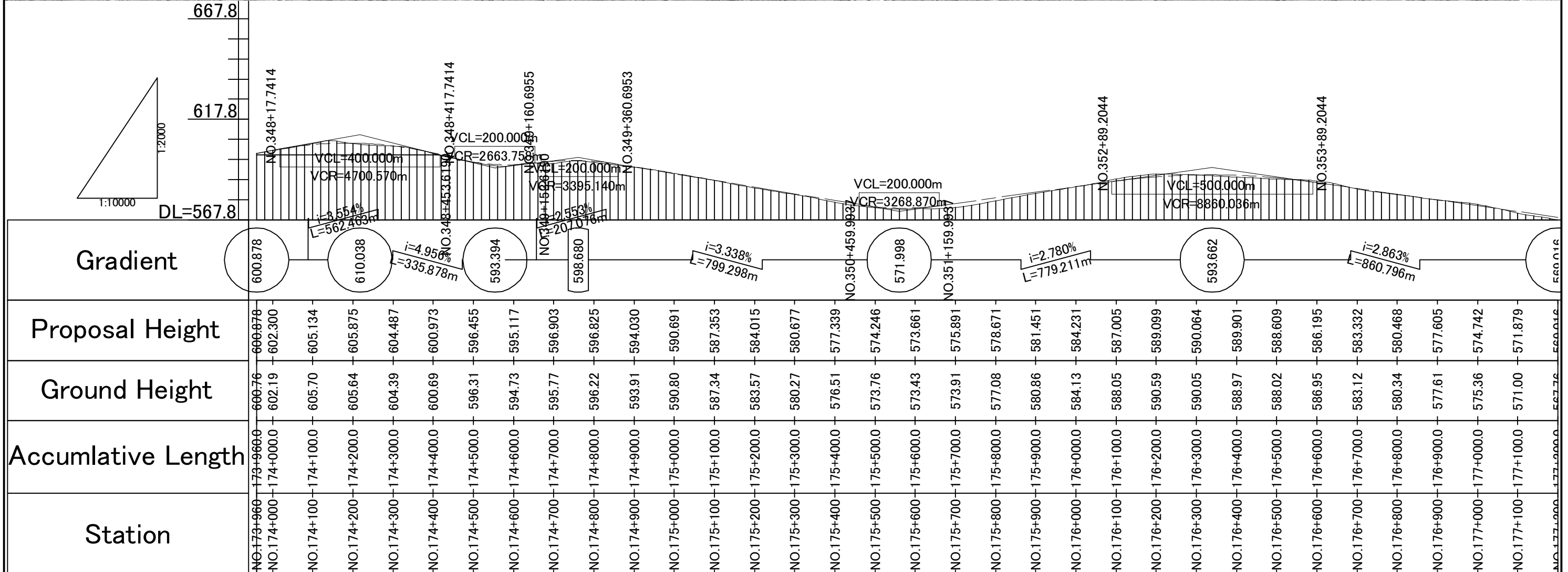
THE STUDY ON UPGRADING OF NAMPULA - CUAMBA ROAD

ORIENTAL CONSULTANTS CO., LTD.
JAPAN ENGINEERING CONSULTANTS CO., LTD.

DRAWING TITLE
Plan and Profile (58/115)

NAME	PREPARED BY	CHECKED BY	APPROVED BY
SIGNATURE			
DATE			

SCALE	SHEET NO.	DRAWING NO.	REV. NO.
1: 10,000		59	-



Station	Accumulative Length	Ground Height	Proposal Height
NO.173+960	173+960.0	600.76	600.878
NO.174+000	174+000.0	602.19	602.300
NO.174+100	174+100.0	605.70	605.134
NO.174+200	174+200.0	605.64	605.875
NO.174+300	174+300.0	604.39	604.487
NO.174+400	174+400.0	600.69	600.973
NO.174+500	174+500.0	596.31	596.455
NO.174+600	174+600.0	594.73	595.117
NO.174+700	174+700.0	595.77	596.903
NO.174+800	174+800.0	596.22	596.825
NO.174+900	174+900.0	593.91	594.030
NO.175+000	175+000.0	590.80	590.691
NO.175+100	175+100.0	587.34	587.353
NO.175+200	175+200.0	583.57	584.015
NO.175+300	175+300.0	580.27	580.677
NO.175+400	175+400.0	576.51	577.339
NO.175+500	175+500.0	573.76	574.246
NO.175+600	175+600.0	573.43	573.661
NO.175+700	175+700.0	573.91	575.891
NO.175+800	175+800.0	577.08	578.671
NO.175+900	175+900.0	580.86	581.451
NO.176+000	176+000.0	584.13	584.231
NO.176+100	176+100.0	588.05	587.005
NO.176+200	176+200.0	590.59	589.099
NO.176+300	176+300.0	590.05	590.064
NO.176+400	176+400.0	588.97	589.901
NO.176+500	176+500.0	588.02	588.609
NO.176+600	176+600.0	586.95	586.195
NO.176+700	176+700.0	583.12	583.332
NO.176+800	176+800.0	580.34	580.468
NO.176+900	176+900.0	577.61	577.605
NO.177+000	177+000.0	575.36	574.742
NO.177+100	177+100.0	571.00	571.879
NO.177+200	177+200.0	567.76	569.016

JAPAN INTERNATIONAL COOPERATION AGENCY
 NATIONAL ROAD ADMINISTRATION

REMARKS:

THE STUDY ON UPGRADING OF NAMPULA - CUAMBA ROAD

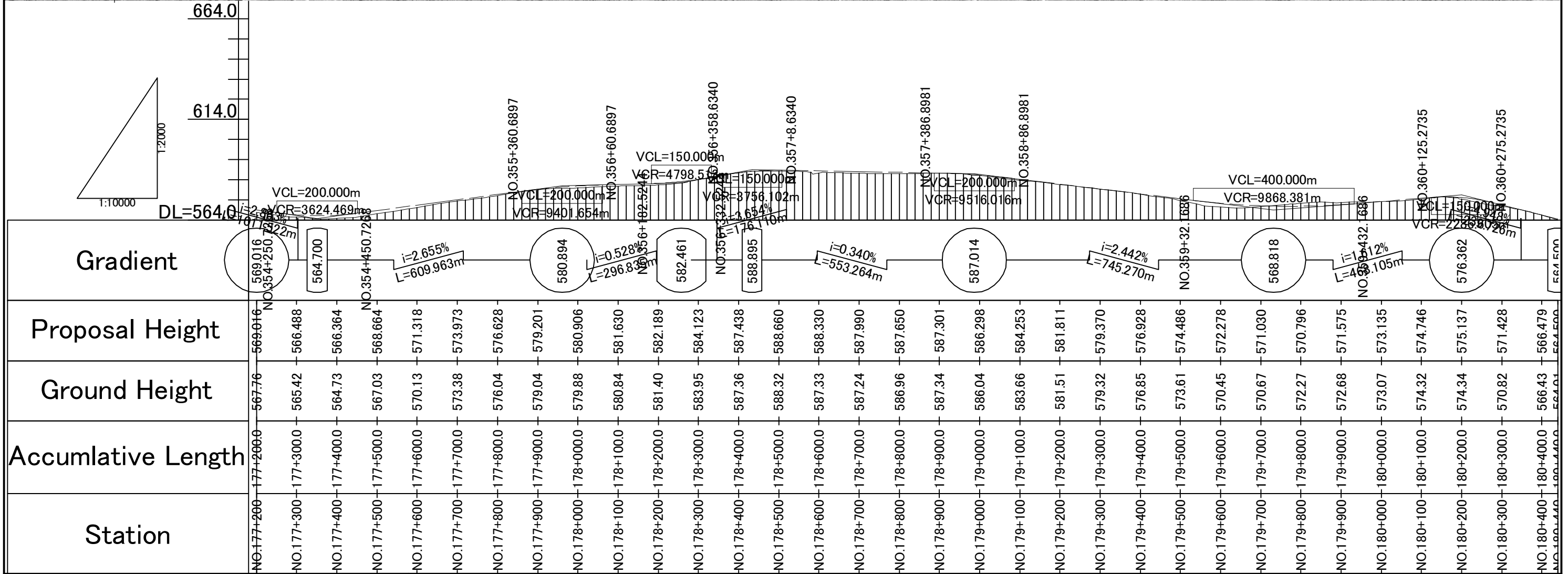
ORIENTAL CONSULTANTS CO., LTD.
 JAPAN ENGINEERING CONSULTANTS CO., LTD.

DRAWING TITLE

Plan and Profile (59/115)

NAME	PREPARED BY	CHECKED BY	APPROVED BY
SIGNATURE			
DATE			

SCALE	SHEET NO.	DRAWING NO.	REV. NO.
1: 10,000		60	-



JICA JAPAN INTERNATIONAL COOPERATION AGENCY

ANE NATIONAL ROAD ADMINISTRATION

REMARKS:

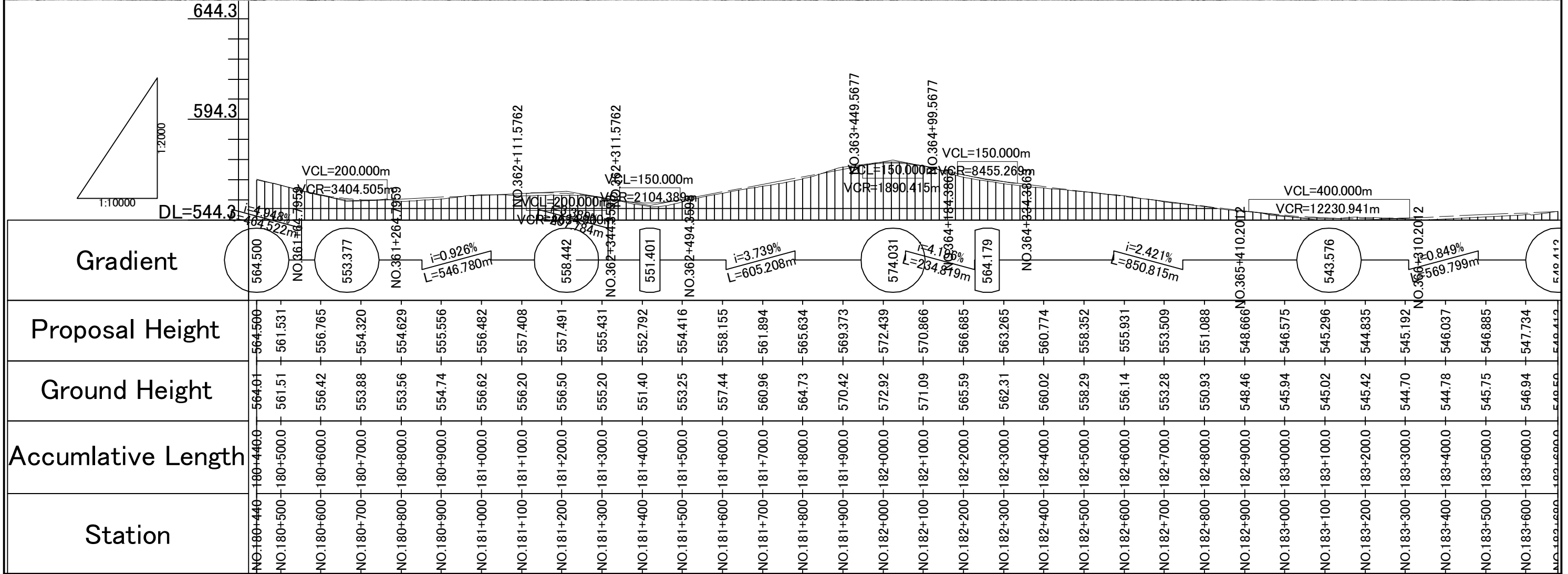
THE STUDY ON UPGRADING OF NAMPULA - CUAMBA ROAD

ORIENTAL CONSULTANTS CO., LTD.
JAPAN ENGINEERING CONSULTANTS CO., LTD.

DRAWING TITLE
Plan and Profile (60/115)

NAME	PREPARED BY	CHECKED BY	APPROVED BY
SIGNATURE			
DATE			

SCALE	SHEET NO.	DRAWING NO.	REV. NO.
1: 10,000		61	-



JICA JAPAN INTERNATIONAL COOPERATION AGENCY

ANE NATIONAL ROAD ADMINISTRATION

REMARKS:

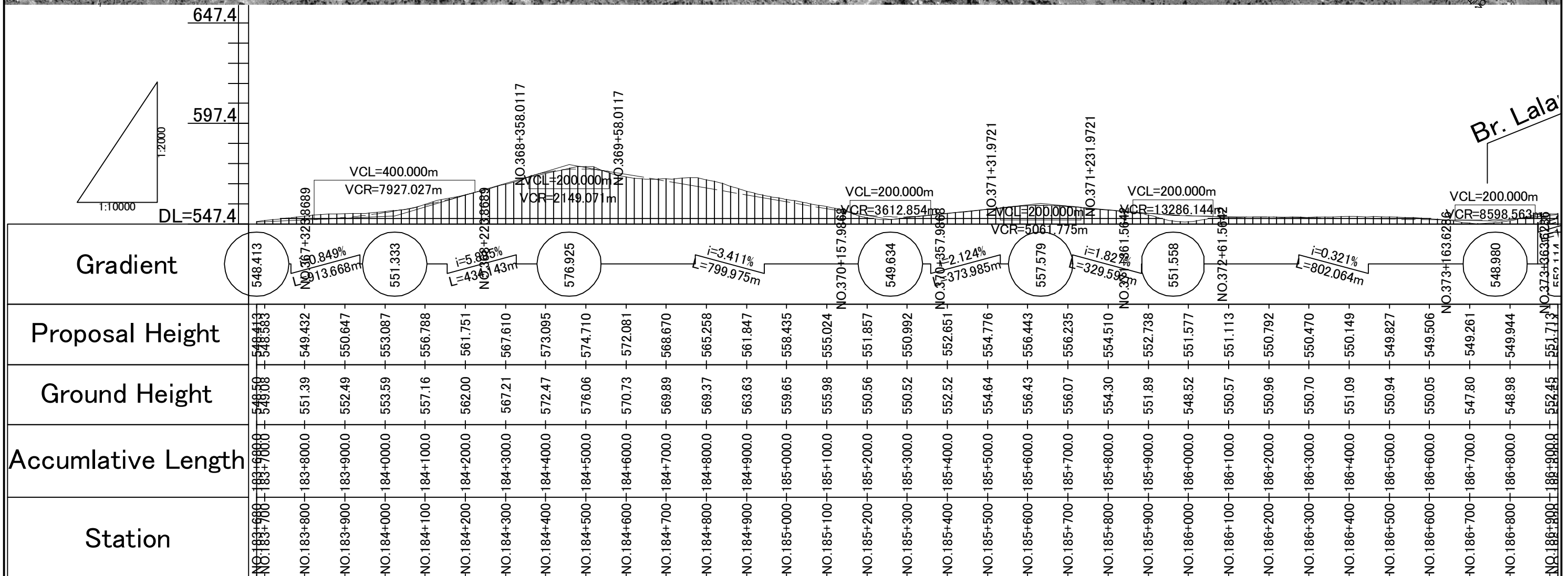
THE STUDY ON UPGRADING OF NAMPULA - CUAMBA ROAD

ORIENTAL CONSULTANTS CO., LTD.
JAPAN ENGINEERING CONSULTANTS CO., LTD.

DRAWING TITLE
Plan and Profile (61/115)

NAME	PREPARED BY	CHECKED BY	APPROVED BY
SIGNATURE			
DATE			

SCALE	SHEET NO.	DRAWING NO.	REV. NO.
1: 10,000		62	-



JICA JAPAN INTERNATIONAL COOPERATION AGENCY

ANE NATIONAL ROAD ADMINISTRATION

REMARKS:

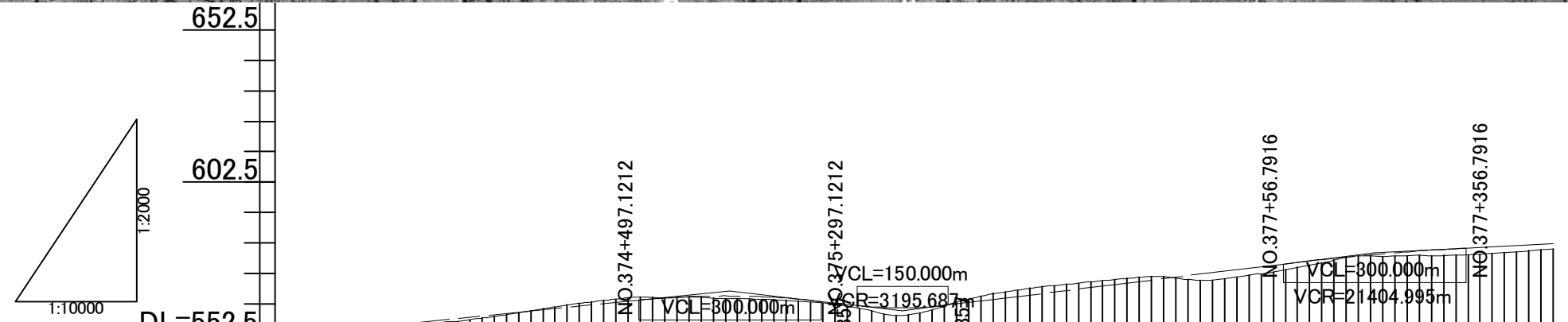
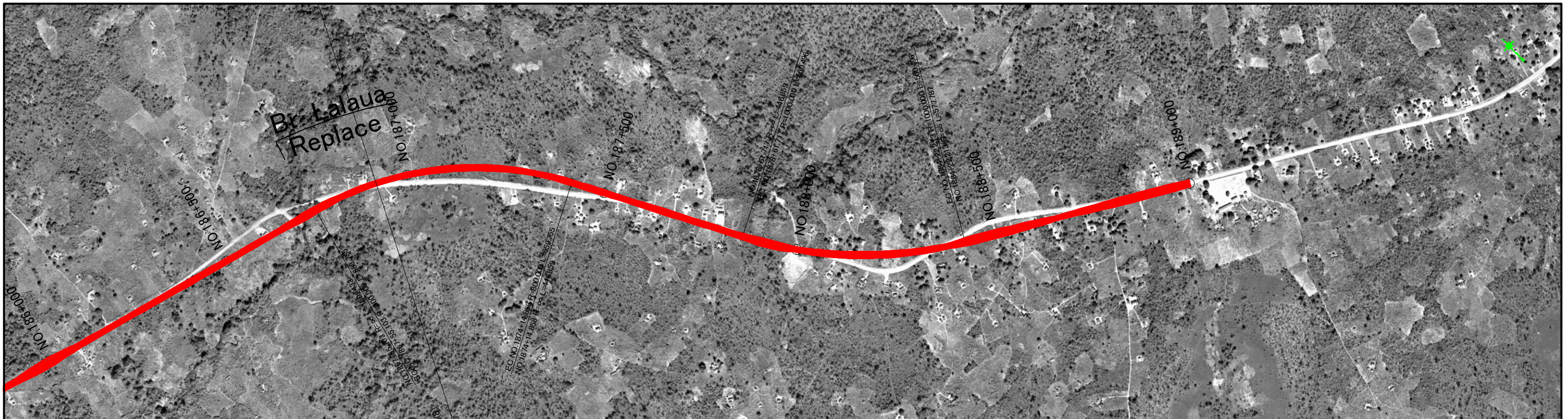
THE STUDY ON UPGRADING OF NAMPULA - CUAMBA ROAD

ORINTAL CONSULTANTS CO., LTD.
JAPAN ENGINEERING CONSULTANTS CO., LTD.

DRAWING TITLE
Plan and Profile (62/115)

NAME	PREPARED BY	CHECKED BY	APPROVED BY
SIGNATURE			
DATE			

SCALE	SHEET NO.	DRAWING NO.	REV. NO.
1: 10,000		63	-



Station	Ground Height	Proposal Height	Gradient	Accumulative Length
NO.186+920	552.52	552.114	552.114	186+920.0
NO.187+000	553.23	553.718	i=2.004% L=883.493m	187+000.0
NO.187+100	554.83	555.722		187+100.0
NO.187+200	556.76	557.727	i=2.25% L=284.014m	187+200.0
NO.187+300	559.55	559.731		187+300.0
NO.187+400	562.66	561.736	i=2.443% L=775.656m	187+400.0
NO.187+500	564.79	563.739		187+500.0
NO.187+600	564.60	564.994	i=1.042% L=293.208m	187+600.0
NO.187+700	564.03	564.830		187+700.0
NO.187+800	562.74	563.248	566.689	187+800.0
NO.187+900	559.20	561.299	560.297	187+900.0
NO.188+000	561.86	561.985	NO.376+6	188+000.0
NO.188+100	566.36	564.423	NO.375+297.1212	188+100.0
NO.188+200	568.92	566.866	NO.374+497.1212	188+200.0
NO.188+300	570.87	569.309	NO.377+56.7916	188+300.0
NO.188+400	570.49	571.752	NO.377+356.7916	188+400.0
NO.188+500	571.94	574.195		188+500.0
NO.188+600	575.17	576.595		188+600.0
NO.188+700	578.29	578.603		188+700.0
NO.188+800	578.36	580.143		188+800.0
NO.188+900	579.07	581.260		188+900.0
NO.189+000	580.62	582.302		189+000.0

JAPAN INTERNATIONAL COOPERATION AGENCY
 NATIONAL ROAD ADMINISTRATION

REMARKS:

THE STUDY ON UPGRADING OF NAMPULA - CUAMBA ROAD

ORIENTAL CONSULTANTS CO., LTD.
 JAPAN ENGINEERING CONSULTANTS CO., LTD.

DRAWING TITLE
Plan and Profile (63/115)

PREPARED BY	CHECKED BY	APPROVED BY	SCALE	SHEET NO.	DRAWING NO.	REV. NO.
NAME			1: 10,000		64	-
SIGNATURE						
DATE						