



Gradient	621.008	$i=0.329\%$ $L=340.000m$	620.749
Proposal Height	620.899	620.928	620.749
Ground Height	621.12	621.01	620.50
Accumulative Length	118+660.0	118+700.0	119+000.0
Station	NO.118+660	NO.118+700	NO.119+000

 JAPAN INTERNATIONAL COOPERATION AGENCY
 NATIONAL ROAD ADMINISTRATION

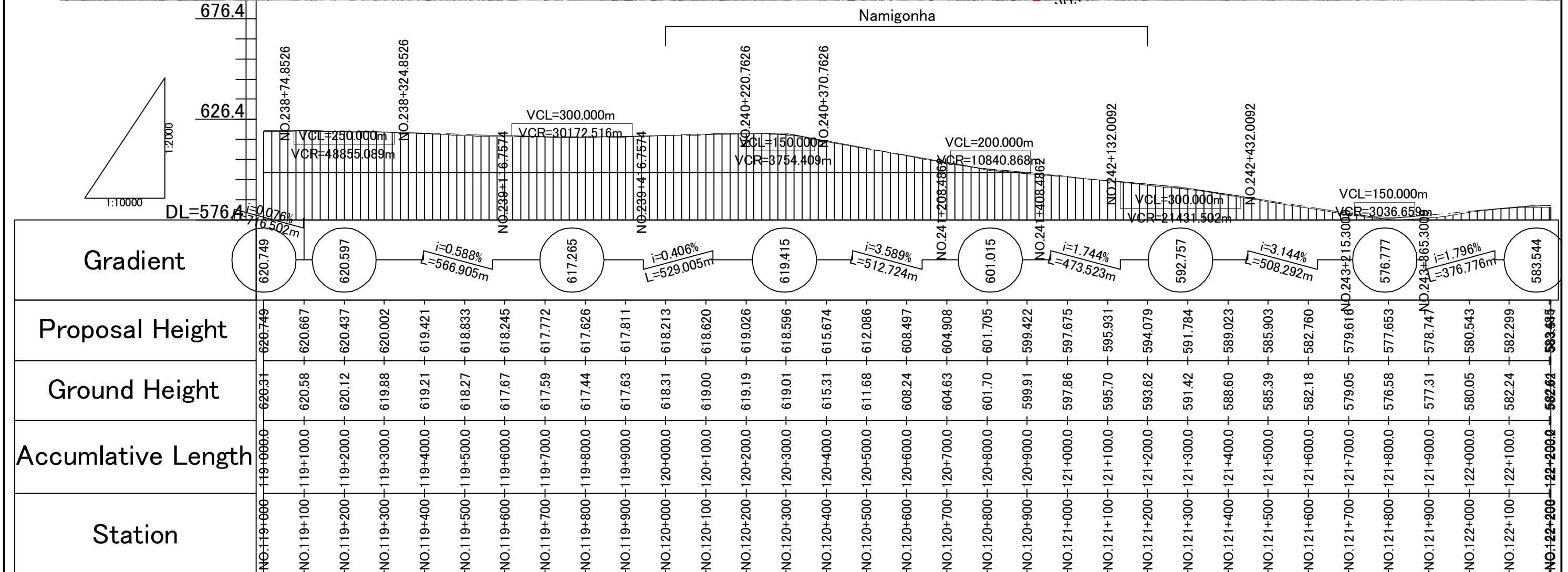
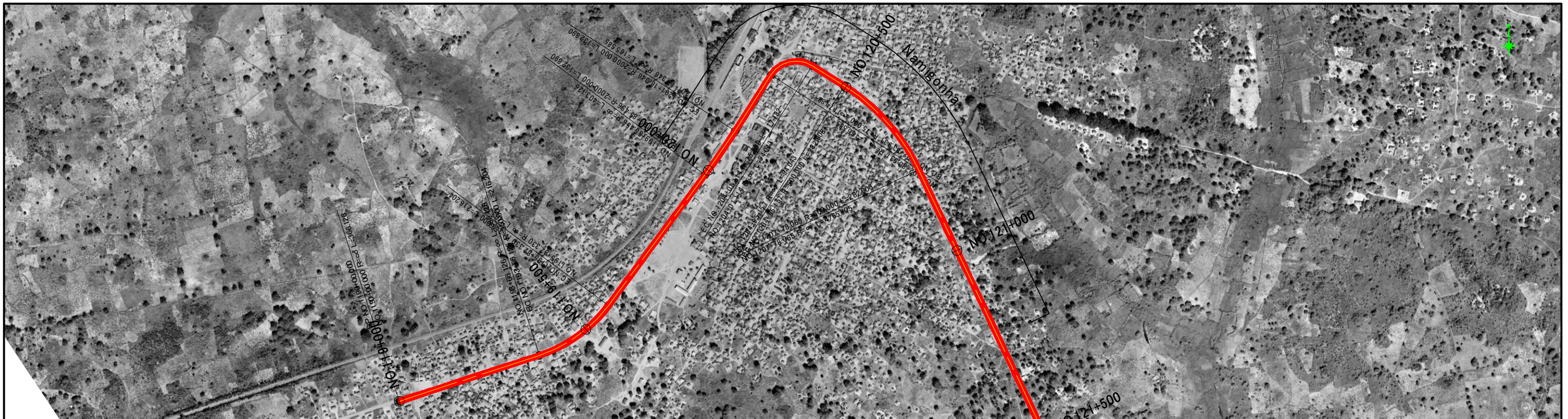
REMARKS:

THE STUDY ON UPGRADING OF NAMPULA - CUAMBA ROAD

 ORIENTAL CONSULTANTS CO., LTD.
 JAPAN ENGINEERING CONSULTANTS CO., LTD.

DRAWING TITLE
Plan and Profile (40/115)

PREPARED BY	CHECKED BY	APPROVED BY	SCALE	SHEET NO.	DRAWING NO.	REV. NO.
NAME			1: 10,000	41		-
SIGNATURE						
DATE						



JICA JAPAN INTERNATIONAL COOPERATION AGENCY

ANE NATIONAL ROAD ADMINISTRATION

REMARKS:

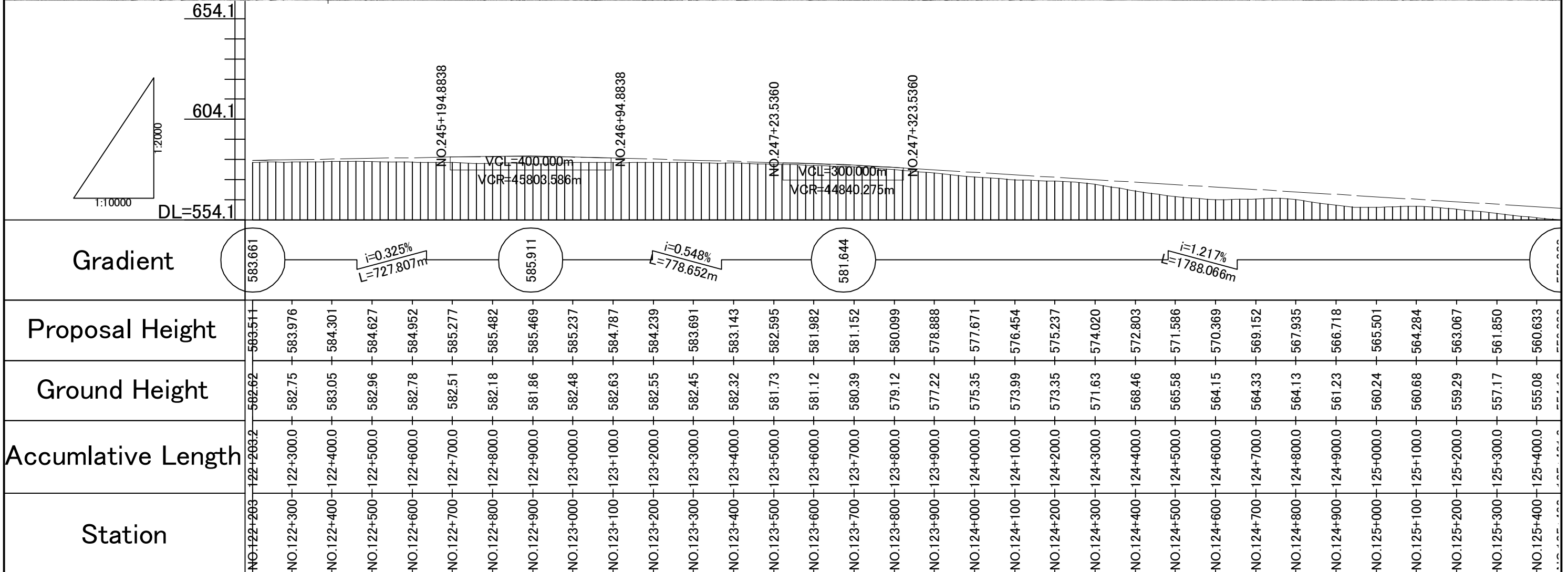
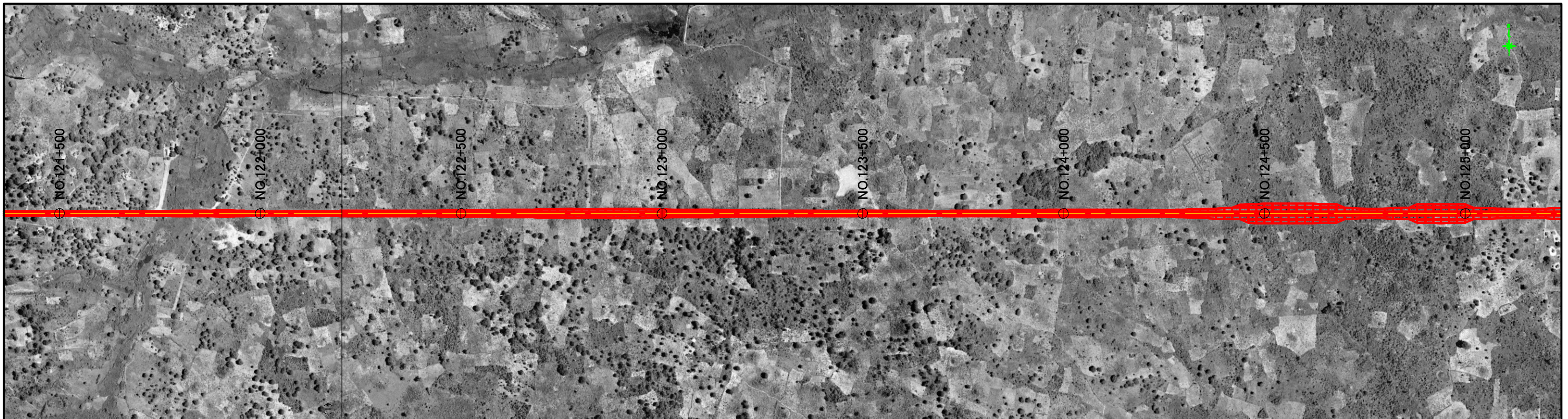
THE STUDY ON UPGRADING OF NAMPULA - CUAMBA ROAD

ORINTAL CONSULTANTS CO., LTD.
JAPAN ENGINEERING CONSULTANTS CO., LTD.

DRAWING TITLE
Plan and Profile (41/115)

NAME	PREPARED BY	CHECKED BY	APPROVED BY
SIGNATURE			
DATE			

SCALE	SHEET NO.	DRAWING NO.	REV. NO.
1: 10,000		42	-



JAPAN INTERNATIONAL COOPERATION AGENCY
 NATIONAL ROAD ADMINISTRATION

REMARKS:

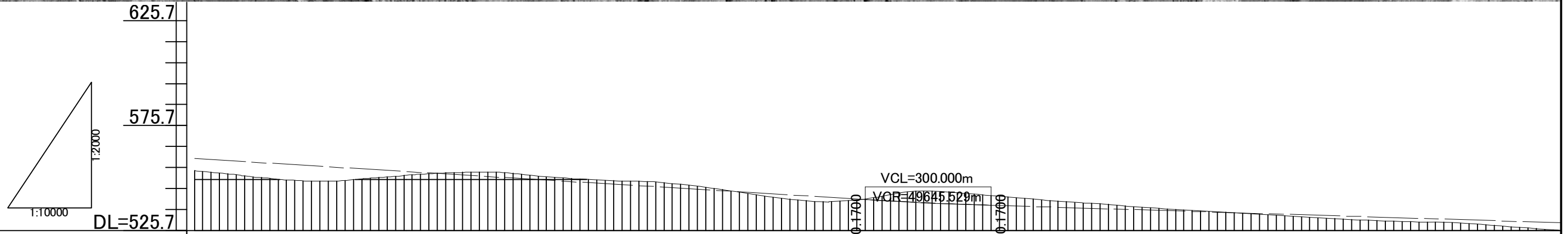
THE STUDY ON UPGRADING OF NAMPULA - CUAMBA ROAD

ORIENTAL CONSULTANTS CO., LTD.
 JAPAN ENGINEERING CONSULTANTS CO., LTD.

DRAWING TITLE
Plan and Profile (42/115)

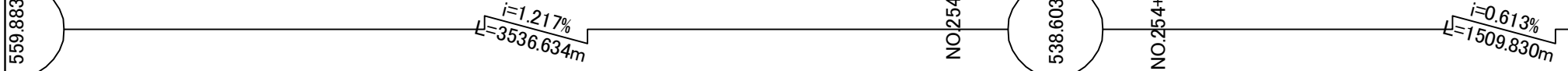
NAME	PREPARED BY	CHECKED BY	APPROVED BY
SIGNATURE			
DATE			

SCALE	SHEET NO.	DRAWING NO.	REV. NO.
1: 10,000	43	43	-



Station	Accumulative Length	Ground Height	Proposal Height
NO.125+462	125+461.6	554.16	559.883
NO.125+500	125+500.0	553.46	559.416
NO.125+600	125+600.0	551.21	558.199
NO.125+700	125+700.0	549.55	556.982
NO.125+800	125+800.0	549.27	555.765
NO.125+900	125+900.0	550.84	554.548
NO.126+000	126+000.0	552.48	553.331
NO.126+100	126+100.0	553.35	552.114
NO.126+200	126+200.0	553.25	550.897
NO.126+300	126+300.0	551.23	549.680
NO.126+400	126+400.0	549.96	548.463
NO.126+500	126+500.0	549.17	547.246
NO.126+600	126+600.0	548.05	546.029
NO.126+700	126+700.0	545.71	544.812
NO.126+800	126+800.0	542.63	543.595
NO.126+900	126+900.0	540.16	542.378
NO.127+000	127+000.0	539.57	541.161
NO.127+100	127+100.0	541.96	539.960
NO.127+200	127+200.0	544.37	538.924
NO.127+300	127+300.0	543.29	538.089
NO.127+400	127+400.0	541.60	537.440
NO.127+500	127+500.0	539.93	536.827
NO.127+600	127+600.0	538.58	536.214
NO.127+700	127+700.0	537.04	535.601
NO.127+800	127+800.0	535.66	534.989
NO.127+900	127+900.0	534.53	534.376
NO.128+000	128+000.0	533.35	533.763
NO.128+100	128+100.0	532.14	533.151
NO.128+200	128+200.0	531.10	532.538
NO.128+300	128+300.0	530.22	531.925
NO.128+400	128+400.0	529.70	531.312
NO.128+500	128+500.0	528.93	530.700
NO.128+600	128+600.0	527.44	530.087
NO.128+700	128+700.0	525.96	529.474

Gradient



JICA JAPAN INTERNATIONAL COOPERATION AGENCY

ANR NATIONAL ROAD ADMINISTRATION

REMARKS:

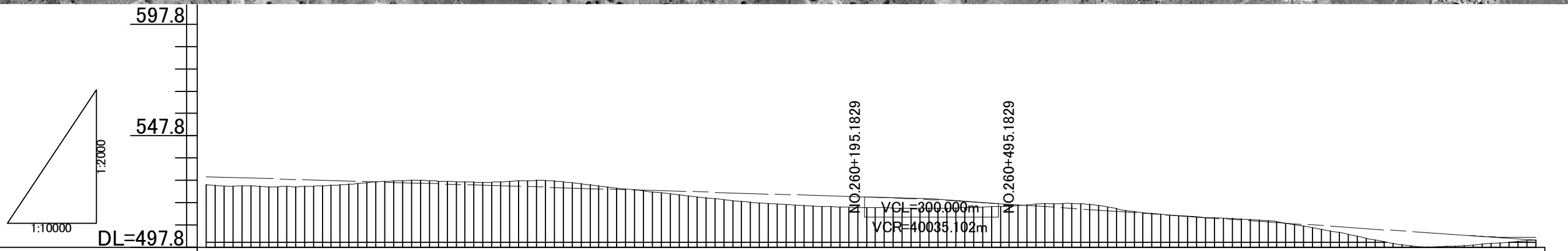
THE STUDY ON UPGRADING OF NAMPULA - CUAMBA ROAD

ORINTAL CONSULTANTS CO., LTD.
JAPAN ENGINEERING CONSULTANTS CO., LTD.

DRAWING TITLE
Plan and Profile (43/115)

NAME	PREPARED BY	CHECKED BY	APPROVED BY
SIGNATURE			
DATE			

SCALE	SHEET NO.	DRAWING NO.	REV. NO.
1: 10,000		44	-



Station	Accumulative Length	Ground Height	Proposal Height	Gradient
NO.128+720	128+720.0	525.72	529.352	i=0.613% L=3135.013m
NO.128+800	128+800.0	525.32	528.861	
NO.128+900	128+900.0	524.99	528.249	519.393
NO.129+000	129+000.0	525.45	527.636	
NO.129+100	129+100.0	527.04	527.023	i=1.362% L=1354.817m
NO.129+200	129+200.0	527.71	526.410	
NO.129+300	129+300.0	526.93	525.798	500.940
NO.129+400	129+400.0	527.31	525.185	
NO.129+500	129+500.0	527.44	524.572	
NO.129+600	129+600.0	525.19	523.959	
NO.129+700	129+700.0	522.98	523.347	
NO.129+800	129+800.0	520.79	522.734	
NO.129+900	129+900.0	518.62	522.121	
NO.130+000	130+000.0	517.08	521.509	
NO.130+100	130+100.0	516.00	520.896	
NO.130+200	130+200.0	515.51	520.283	
NO.130+300	130+300.0	515.21	519.533	
NO.130+400	130+400.0	515.35	518.534	
NO.130+500	130+500.0	516.07	517.285	
NO.130+600	130+600.0	517.23	515.923	
NO.130+700	130+700.0	516.95	514.561	
NO.130+800	130+800.0	513.70	513.199	
NO.130+900	130+900.0	511.82	511.836	
NO.131+000	131+000.0	510.78	510.474	
NO.131+100	131+100.0	509.61	509.112	
NO.131+200	131+200.0	506.59	507.750	
NO.131+300	131+300.0	502.65	506.388	
NO.131+400	131+400.0	498.86	505.026	
NO.131+500	131+500.0	498.13	503.664	
NO.131+600	131+600.0	499.47	502.434	
NO.131+700	131+700.0	500.94	502.126	

REMARKS:

JICA JAPAN INTERNATIONAL COOPERATION AGENCY

ANE NATIONAL ROAD ADMINISTRATION

THE STUDY ON UPGRADING OF NAMPULA - CUAMBA ROAD

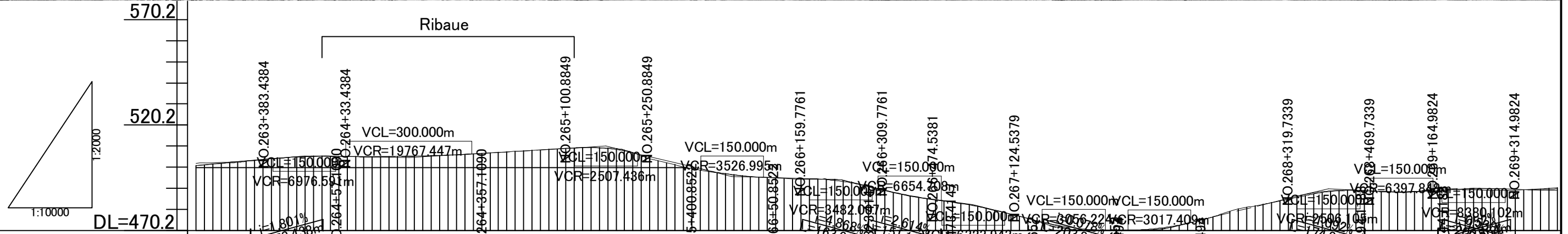
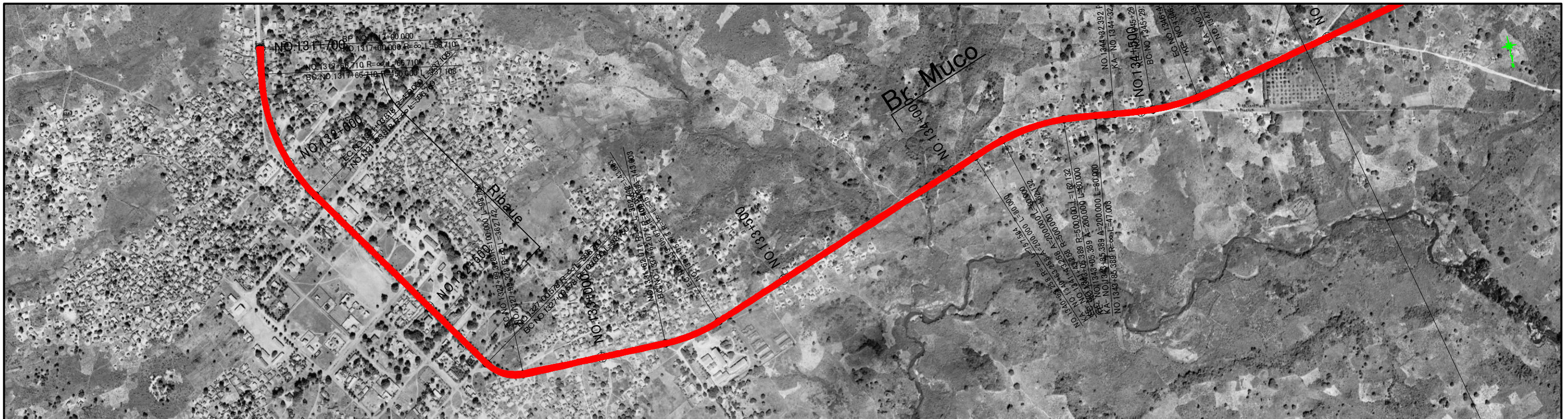
ORIENTAL CONSULTANTS CO., LTD.
JAPAN ENGINEERING CONSULTANTS CO., LTD.

DRAWING TITLE

Plan and Profile (44/115)

	PREPARED BY	CHECKED BY	APPROVED BY
NAME			
SIGNATURE			
DATE			

SCALE	SHEET NO.	DRAWING NO.	REV. NO.
1: 10,000		45	-



Station	Ground Height	Proposal Height	Gradient
NO.131+700	500.95	502.072	500.948
NO.131+800	502.48	502.874	505.603
NO.131+900	504.46	504.531	$i=1.801\%$ $L=258.438m$
NO.132+000	505.38	505.378	$i=0.349\%$ $L=248.671m$
NO.132+100	505.07	505.156	504.736
NO.132+200	505.39	505.277	$i=1.169\%$ $L=468.776m$
NO.132+300	505.91	505.904	510.215
NO.132+400	506.91	506.990	$i=4.813\%$ $L=299.967m$
NO.132+500	508.12	508.159	495.776
NO.132+600	509.26	509.328	$i=0.560\%$ $L=258.924m$
NO.132+700	508.98	508.538	494.325
NO.132+800	503.21	504.241	486.358
NO.132+900	498.80	499.427	482.408
NO.133+000	496.17	496.007	$i=4.956\%$ $L=239.107m$
NO.133+100	494.79	495.080	470.484
NO.133+200	494.58	494.288	470.325
NO.133+300	490.92	491.136	475.582
NO.133+400	486.44	486.722	480.475
NO.133+500	483.55	483.651	485.368
NO.133+600	479.69	479.844	488.976
NO.133+700	474.71	474.905	488.856
NO.133+800	470.40	471.138	488.637
NO.133+900	470.42	470.397	489.664
NO.134+000	471.01	471.445	490.238
NO.134+100	475.56	475.582	490.129
NO.134+200	481.08	480.475	
NO.134+300	485.08	485.368	
NO.134+400	488.66	488.976	
NO.134+500	488.73	488.856	
NO.134+600	488.67	488.637	
NO.134+700	489.83	489.664	
NO.134+800	489.19	489.901	
NO.134+900	489.81	489.519	
NO.134+000	490.49	490.027	

REMARKS:

JAPAN INTERNATIONAL COOPERATION AGENCY
 NATIONAL ROAD ADMINISTRATION

THE STUDY ON UPGRADING OF NAMPULA - CUAMBA ROAD

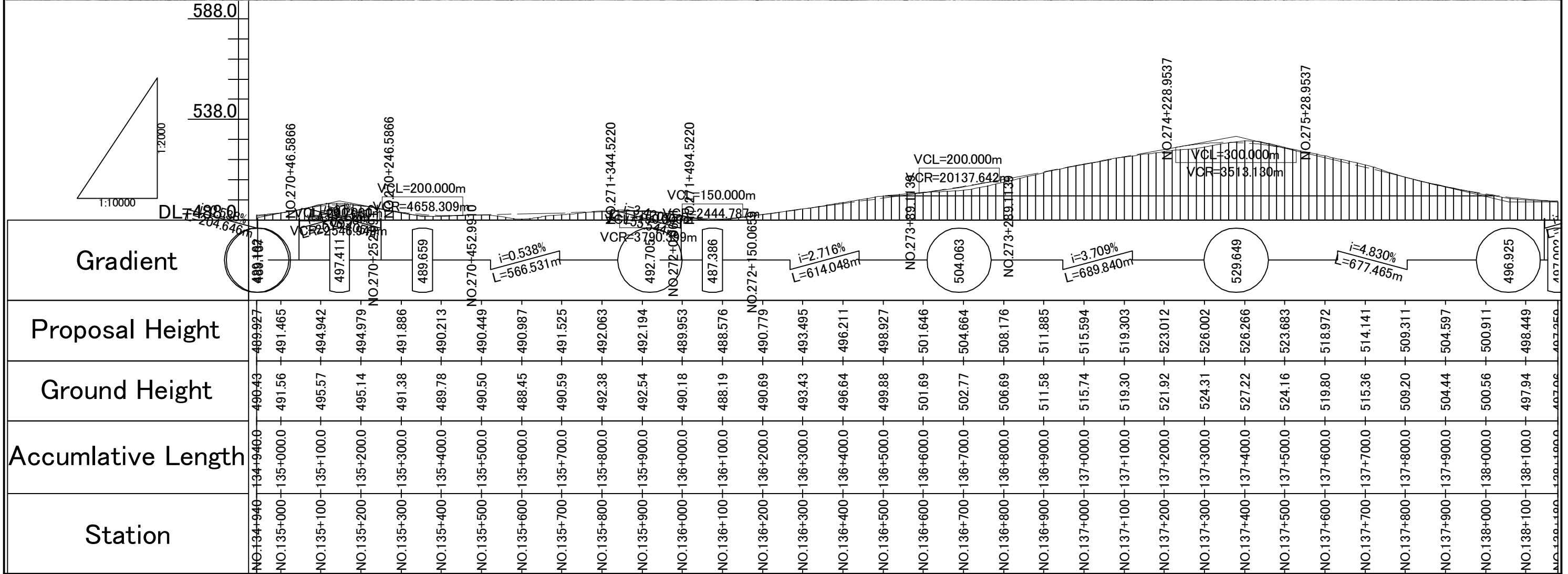
ORIENTAL CONSULTANTS CO., LTD.
 JAPAN ENGINEERING CONSULTANTS CO., LTD.

DRAWING TITLE

Plan and Profile (45/115)

NAME	PREPARED BY	CHECKED BY	APPROVED BY
SIGNATURE			
DATE			

SCALE	SHEET NO.	DRAWING NO.	REV. NO.
1: 10,000		46	-



Station	Accumulative Length	Ground Height	Proposal Height
NO.134+940	134+940.0	490.43	489.927
NO.135+000	135+000.0	491.56	491.465
NO.135+100	135+100.0	495.57	494.942
NO.135+200	135+200.0	495.14	494.979
NO.135+300	135+300.0	491.38	491.886
NO.135+400	135+400.0	489.78	490.213
NO.135+500	135+500.0	490.50	490.449
NO.135+600	135+600.0	488.45	490.987
NO.135+700	135+700.0	490.59	491.525
NO.135+800	135+800.0	492.38	492.063
NO.135+900	135+900.0	492.54	492.194
NO.136+000	136+000.0	490.18	489.953
NO.136+100	136+100.0	488.19	488.576
NO.136+200	136+200.0	490.69	490.779
NO.136+300	136+300.0	493.43	493.495
NO.136+400	136+400.0	496.64	496.211
NO.136+500	136+500.0	499.88	498.927
NO.136+600	136+600.0	501.69	501.646
NO.136+700	136+700.0	502.77	504.664
NO.136+800	136+800.0	506.69	508.176
NO.136+900	136+900.0	511.58	511.885
NO.137+000	137+000.0	515.74	515.594
NO.137+100	137+100.0	519.30	519.303
NO.137+200	137+200.0	521.92	523.012
NO.137+300	137+300.0	524.31	526.002
NO.137+400	137+400.0	527.22	526.266
NO.137+500	137+500.0	524.16	523.683
NO.137+600	137+600.0	519.80	518.972
NO.137+700	137+700.0	515.36	514.141
NO.137+800	137+800.0	509.20	509.311
NO.137+900	137+900.0	504.44	504.597
NO.138+000	138+000.0	500.56	500.911
NO.138+100	138+100.0	497.94	498.449
NO.138+200	138+200.0	497.06	497.250

JICA JAPAN INTERNATIONAL COOPERATION AGENCY

ANR NATIONAL ROAD ADMINISTRATION

REMARKS:

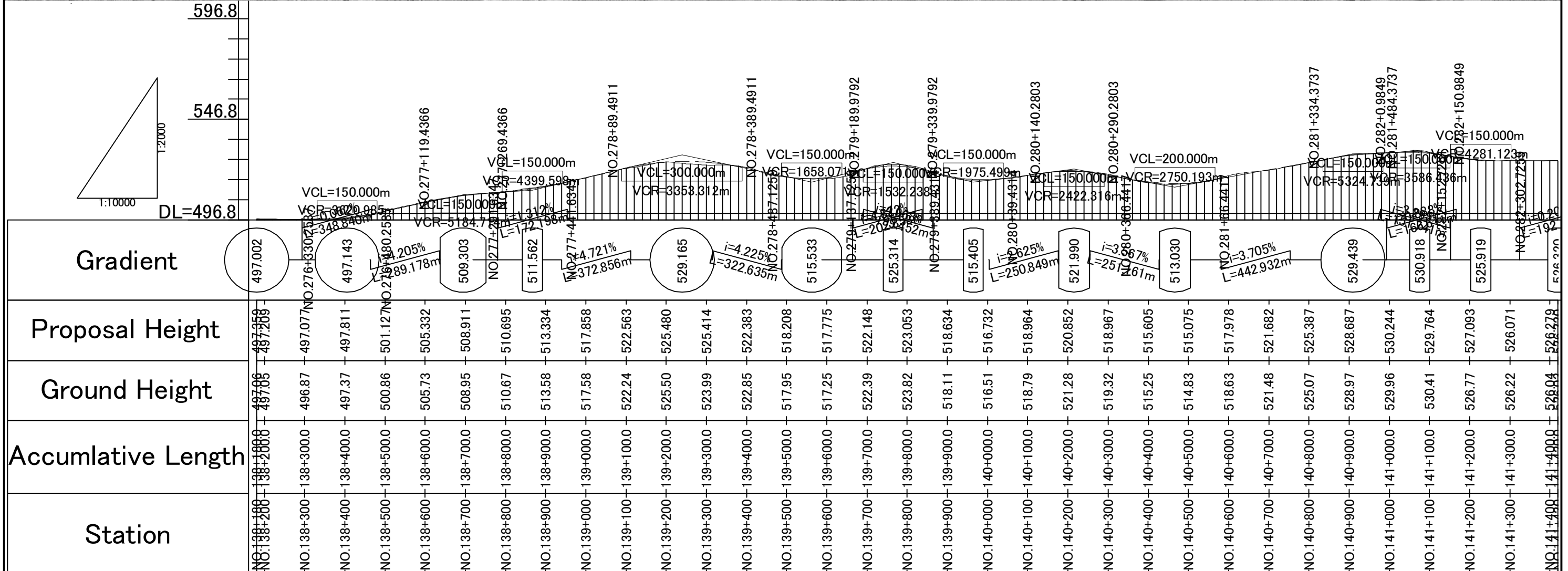
THE STUDY ON UPGRADING OF NAMPULA - CUAMBA ROAD

ORIENTAL CONSULTANTS CO., LTD.
JAPAN ENGINEERING CONSULTANTS CO., LTD.

DRAWING TITLE
Plan and Profile (46/115)

NAME	PREPARED BY	CHECKED BY	APPROVED BY
SIGNATURE			
DATE			

SCALE	SHEET NO.	DRAWING NO.	REV. NO.
1: 10,000		47	-



Station	Accumulative Length	Ground Height	Proposal Height	Gradient
NO.138+200	138+200	497.05	497.259	497.002
NO.138+300	138+300	496.87	497.077	348.840m
NO.138+400	138+400	497.37	497.811	497.143
NO.138+500	138+500	500.86	501.127	2.05%
NO.138+600	138+600	505.73	505.332	480.258m
NO.138+700	138+700	508.95	508.911	509.303
NO.138+800	138+800	510.67	510.695	NO.277+291.99
NO.138+900	138+900	513.58	513.334	511.562
NO.139+000	139+000	517.58	517.858	NO.277+411.63
NO.139+100	139+100	522.24	522.563	4.721%
NO.139+200	139+200	525.50	525.480	NO.278+89.4911
NO.139+300	139+300	523.99	525.414	529.165
NO.139+400	139+400	522.85	522.383	i=4.225%
NO.139+500	139+500	517.95	518.208	L=322.635m
NO.139+600	139+600	517.25	517.775	515.533
NO.139+700	139+700	522.39	522.148	NO.279+137.59
NO.139+800	139+800	523.82	523.053	525.314
NO.139+900	139+900	518.11	518.634	NO.279+339.9792
NO.140+000	140+000	516.51	516.732	515.405
NO.140+100	140+100	518.79	518.964	i=2.25%
NO.140+200	140+200	521.28	520.852	L=250.849m
NO.140+300	140+300	519.32	518.967	521.990
NO.140+400	140+400	515.25	515.605	i=3.67%
NO.140+500	140+500	514.83	515.075	L=251.961m
NO.140+600	140+600	518.63	517.978	513.030
NO.140+700	140+700	521.48	521.682	NO.281+166.44
NO.140+800	140+800	525.07	525.387	i=3.705%
NO.140+900	140+900	528.97	528.687	L=442.932m
NO.141+000	141+000	529.96	530.244	529.439
NO.141+100	141+100	530.41	529.764	530.918
NO.141+200	141+200	526.77	527.093	NO.282+0.9849
NO.141+300	141+300	526.22	526.071	NO.281+484.3737
NO.141+400	141+400	526.04	526.279	525.919

JICA JAPAN INTERNATIONAL COOPERATION AGENCY

ANR NATIONAL ROAD ADMINISTRATION

REMARKS:

THE STUDY ON UPGRADING OF NAMPULA - CUAMBA ROAD

ORIENTAL CONSULTANTS CO., LTD.

JAPAN ENGINEERING CONSULTANTS CO., LTD.

DRAWING TITLE: Plan and Profile (47/115)

PREPARED BY	CHECKED BY	APPROVED BY
NAME		
SIGNATURE		
DATE		

SCALE	SHEET NO.	DRAWING NO.	REV. NO.
1: 10,000		48	-