

JICA JAPAN INTERNATIONAL COOPERATION AGENCY

ANR NATIONAL ROAD ADMINISTRATION

REMARKS:

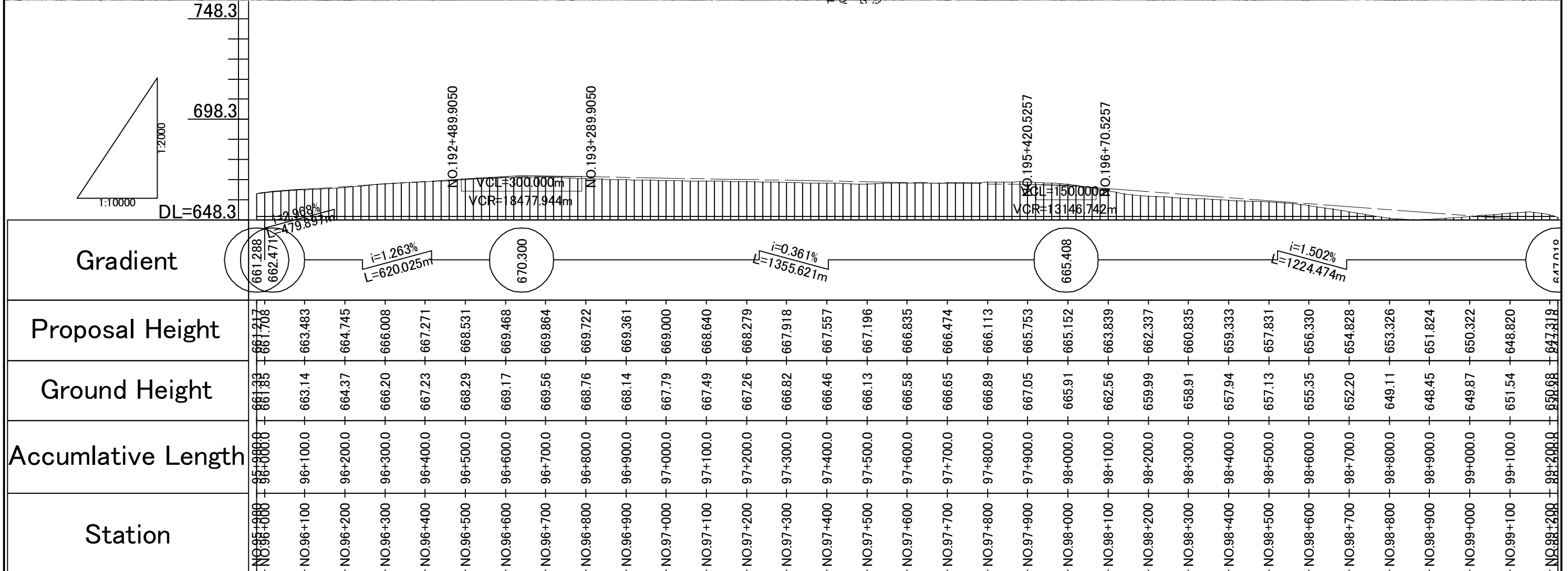
THE STUDY ON UPGRADING OF NAMPULA - CUAMBA ROAD

ORIENTAL CONSULTANTS CO., LTD.
JAPAN ENGINEERING CONSULTANTS CO., LTD.

DRAWING TITLE
Plan and Profile (32/115)

NAME	PREPARED BY	CHECKED BY	APPROVED BY
SIGNATURE			
DATE			

SCALE	SHEET NO.	DRAWING NO.	REV. NO.
1: 10,000		33	-



Station	Accumulative Length	Ground Height	Proposal Height
NO.95+000	95+000.0	661.88	661.217
NO.96+100	96+100.0	663.14	663.483
NO.96+200	96+200.0	664.37	664.745
NO.96+300	96+300.0	666.20	666.008
NO.96+400	96+400.0	667.23	667.271
NO.96+500	96+500.0	668.29	668.531
NO.96+600	96+600.0	669.17	669.468
NO.96+700	96+700.0	669.56	669.864
NO.96+800	96+800.0	668.76	669.722
NO.96+900	96+900.0	668.14	669.361
NO.97+000	97+000.0	667.79	669.000
NO.97+100	97+100.0	667.49	668.640
NO.97+200	97+200.0	667.26	668.279
NO.97+300	97+300.0	666.82	667.918
NO.97+400	97+400.0	666.46	667.557
NO.97+500	97+500.0	666.13	667.196
NO.97+600	97+600.0	666.58	666.835
NO.97+700	97+700.0	666.65	666.474
NO.97+800	97+800.0	666.89	666.113
NO.97+900	97+900.0	667.05	665.753
NO.98+000	98+000.0	665.91	665.152
NO.98+100	98+100.0	662.56	663.839
NO.98+200	98+200.0	659.99	662.337
NO.98+300	98+300.0	658.91	660.835
NO.98+400	98+400.0	657.94	659.333
NO.98+500	98+500.0	657.13	657.831
NO.98+600	98+600.0	655.35	656.330
NO.98+700	98+700.0	652.20	654.828
NO.98+800	98+800.0	649.11	653.326
NO.98+900	98+900.0	648.45	651.824
NO.99+000	99+000.0	649.87	650.322
NO.99+100	99+100.0	651.54	648.820
NO.99+200	99+200.0	650.68	647.319

JICA JAPAN INTERNATIONAL COOPERATION AGENCY

ANR NATIONAL ROAD ADMINISTRATION

REMARKS:

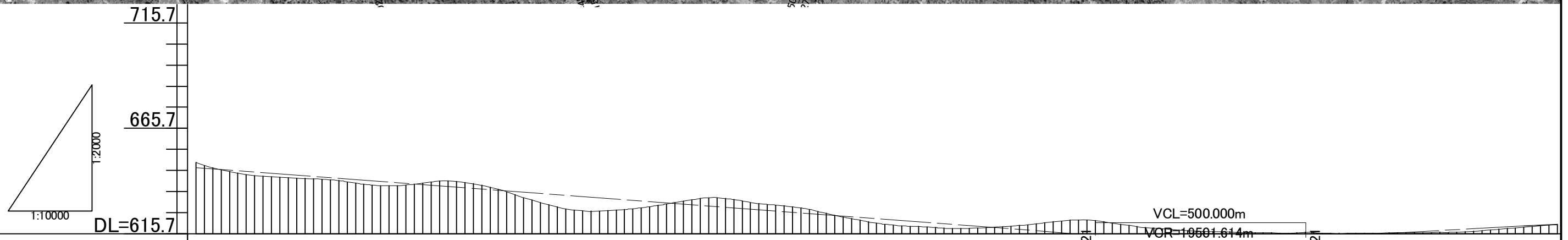
THE STUDY ON UPGRADING OF NAMPULA - CUAMBA ROAD

ORIENTAL CONSULTANTS CO., LTD.
JAPAN ENGINEERING CONSULTANTS CO., LTD.

DRAWING TITLE
Plan and Profile (33/115)

NAME	PREPARED BY	CHECKED BY	APPROVED BY
SIGNATURE			
DATE			

SCALE	SHEET NO.	DRAWING NO.	REV. NO.
1: 10,000		34	-





Station	Accumulative Length	Ground Height	Proposal Height	Gradient
NO.99+220	99+220.0	649.40	647.018	647.018
NO.99+300	99+300.0	645.09	645.817	
NO.99+400	99+400.0	642.57	644.315	i=1.502% L=3614.966m
NO.99+500	99+500.0	641.70	642.813	
NO.99+600	99+600.0	639.63	641.311	NO.202+360.492
NO.99+700	99+700.0	638.38	639.809	
NO.99+800	99+800.0	640.55	638.307	611.117
NO.99+900	99+900.0	638.63	636.806	
NO.100+000	100+000.0	632.72	635.304	i=1.062% L=849.508m
NO.100+100	100+100.0	627.45	633.802	
NO.100+200	100+200.0	626.60	632.300	NO.203+360.492
NO.100+300	100+300.0	628.46	630.798	
NO.100+400	100+400.0	631.70	629.296	620.120
NO.100+500	100+500.0	631.81	627.795	
NO.100+600	100+600.0	629.21	626.293	NO.201+120
NO.100+700	100+700.0	626.17	624.791	
NO.100+800	100+800.0	622.01	623.289	NO.201+120
NO.100+900	100+900.0	619.35	621.787	
NO.101+000	101+000.0	618.25	620.285	NO.201+120
NO.101+100	101+100.0	618.48	618.783	
NO.101+200	101+200.0	619.86	617.282	NO.201+120
NO.101+300	101+300.0	622.03	615.780	
NO.101+400	101+400.0	620.71	614.318	NO.201+120
NO.101+500	101+500.0	618.25	613.275	
NO.101+600	101+600.0	616.88	612.745	NO.201+120
NO.101+700	101+700.0	616.24	612.728	
NO.101+800	101+800.0	615.90	613.223	NO.201+120
NO.101+900	101+900.0	615.82	614.191	
NO.102+000	102+000.0	615.78	615.253	NO.201+120
NO.102+100	102+100.0	616.16	616.315	
NO.102+200	102+200.0	616.22	617.378	NO.201+120
NO.102+300	102+300.0	617.42	618.440	
NO.102+400	102+400.0	619.03	619.487	NO.201+120
NO.102+500	102+500.0	620.01	620.519	

 JAPAN INTERNATIONAL COOPERATION AGENCY
 NATIONAL ROAD ADMINISTRATION

REMARKS:

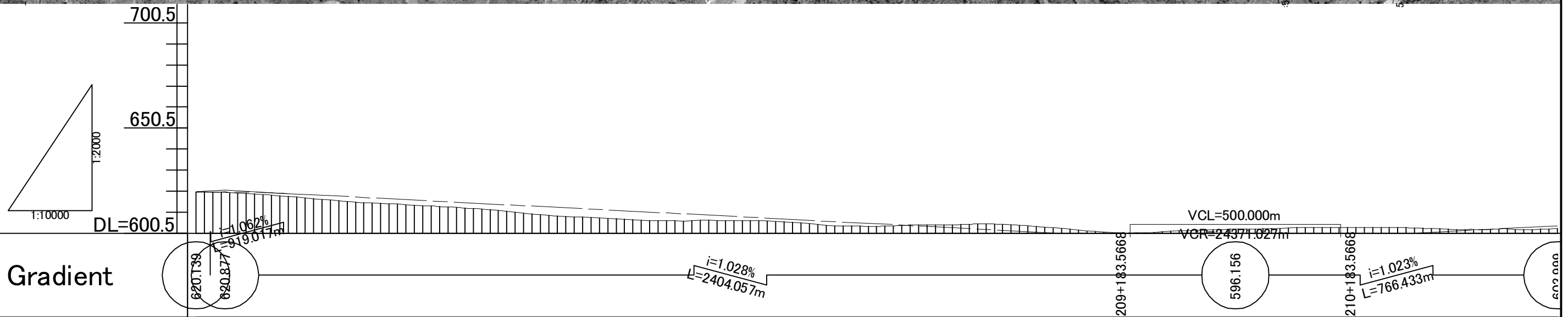
THE STUDY ON UPGRADING OF NAMPULA - CUAMBA ROAD

 ORIENTAL CONSULTANTS CO., LTD.
 JAPAN ENGINEERING CONSULTANTS CO., LTD.

DRAWING TITLE
Plan and Profile (34/115)

PREPARED BY	CHECKED BY	APPROVED BY
NAME		
SIGNATURE		
DATE		

SCALE	SHEET NO.	DRAWING NO.	REV. NO.
1: 10,000		35	-



Station	Accumulative Length	Ground Height	Proposal Height
NO.102+460	102+460.0	620.01	619.913
NO.102+500	102+500.0	620.03	620.058
NO.102+600	102+600.0	619.10	619.932
NO.102+700	102+700.0	617.61	619.124
NO.102+800	102+800.0	615.90	618.096
NO.102+900	102+900.0	614.58	617.067
NO.103+000	103+000.0	613.57	616.039
NO.103+100	103+100.0	612.45	615.011
NO.103+200	103+200.0	610.84	613.982
NO.103+300	103+300.0	608.96	612.954
NO.103+400	103+400.0	607.88	611.926
NO.103+500	103+500.0	606.89	610.897
NO.103+600	103+600.0	606.48	609.869
NO.103+700	103+700.0	606.53	608.841
NO.103+800	103+800.0	606.31	607.812
NO.103+900	103+900.0	605.39	606.784
NO.104+000	104+000.0	603.88	605.756
NO.104+100	104+100.0	603.87	604.727
NO.104+200	104+200.0	604.47	603.699
NO.104+300	104+300.0	604.70	602.671
NO.104+400	104+400.0	604.45	601.643
NO.104+500	104+500.0	602.97	600.614
NO.104+600	104+600.0	601.27	599.586
NO.104+700	104+700.0	600.63	598.563
NO.104+800	104+800.0	601.66	597.807
NO.104+900	104+900.0	602.27	597.462
NO.105+000	105+000.0	602.60	597.527
NO.105+100	105+100.0	603.13	598.002
NO.105+200	105+200.0	603.27	598.880
NO.105+300	105+300.0	603.22	599.905
NO.105+400	105+400.0	602.69	600.929
NO.105+500	105+500.0	602.28	601.952
NO.105+600	105+600.0	602.24	602.975
NO.105+700	105+700.0	600.95	600.000

JICA JAPAN INTERNATIONAL COOPERATION AGENCY

ANR NATIONAL ROAD ADMINISTRATION

REMARKS:

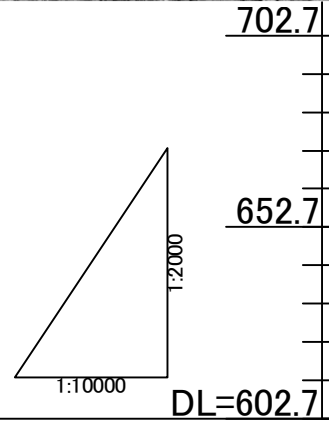
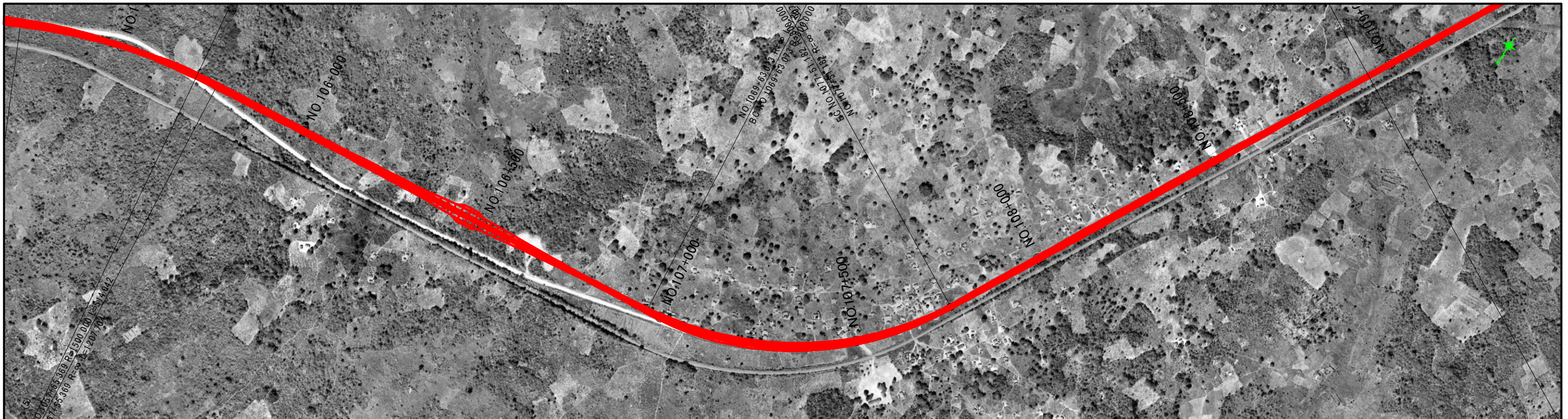
THE STUDY ON UPGRADING OF NAMPULA - CUAMBA ROAD

ORINTAL CONSULTANTS CO., LTD.
JAPAN ENGINEERING CONSULTANTS CO., LTD.

DRAWING TITLE
Plan and Profile (35/115)

NAME	PREPARED BY	CHECKED BY	APPROVED BY
SIGNATURE			
DATE			

SCALE	SHEET NO.	DRAWING NO.	REV. NO.
1: 10,000		36	-





Station	Accumulative Length	Ground Height	Proposal Height	Gradient
NO.105+700	105+700.0	602.65	603.999	603.999
NO.105+800	105+800.0	603.80	605.022	$i=1.023\%$ $L=1926.417m$
NO.105+900	105+900.0	604.76	606.045	
NO.106+000	106+000.0	605.90	607.069	615.869
NO.106+100	106+100.0	606.94	608.092	
NO.106+200	106+200.0	607.20	609.115	$i=0.325\%$ $L=1999.687m$
NO.106+300	106+300.0	607.70	610.139	
NO.106+400	106+400.0	606.49	611.162	609.375
NO.106+500	106+500.0	607.07	612.185	
NO.106+600	106+600.0	610.11	613.208	
NO.106+700	106+700.0	612.77	614.122	
NO.106+800	106+800.0	614.78	614.768	
NO.106+900	106+900.0	615.11	615.144	
NO.107+000	107+000.0	613.79	615.251	
NO.107+100	107+100.0	612.58	615.088	
NO.107+200	107+200.0	611.89	614.765	
NO.107+300	107+300.0	611.80	614.440	
NO.107+400	107+400.0	611.68	614.115	
NO.107+500	107+500.0	611.92	613.790	
NO.107+600	107+600.0	612.16	613.466	
NO.107+700	107+700.0	612.67	613.141	
NO.107+800	107+800.0	613.33	612.816	
NO.107+900	107+900.0	613.76	612.492	
NO.108+000	108+000.0	613.74	612.167	
NO.108+100	108+100.0	614.47	611.842	
NO.108+200	108+200.0	613.74	611.517	
NO.108+300	108+300.0	613.38	611.193	
NO.108+400	108+400.0	613.19	610.868	
NO.108+500	108+500.0	612.73	610.543	
NO.108+600	108+600.0	611.57	610.218	
NO.108+700	108+700.0	610.36	609.894	
NO.108+800	108+800.0	609.85	609.615	
NO.108+900	108+900.0	609.73	609.797	
NO.109+000	109+000.0	610.10	610.097	

 JAPAN INTERNATIONAL COOPERATION AGENCY
 NATIONAL ROAD ADMINISTRATION

REMARKS:

THE STUDY ON UPGRADING OF NAMPULA - CUAMBA ROAD

 ORIENTAL CONSULTANTS CO., LTD.
 JAPAN ENGINEERING CONSULTANTS CO., LTD.

DRAWING TITLE
Plan and Profile (36/115)

NAME	PREPARED BY	CHECKED BY	APPROVED BY
SIGNATURE			
DATE			

SCALE	SHEET NO.	DRAWING NO.	REV. NO.
1: 10,000		37	-





Station	Accumulative Length	Ground Height	Proposal Height	Gradient
NO.108+940	108+940.0	610.10	610.027	610.016
NO.109+000	109+000.0	610.70	610.495	$i=0.798\%$ $L=630.063m$
NO.109+100	109+100.0	612.06	611.293	614.403
NO.109+200	109+200.0	612.44	612.091	$i=1.170\%$ $L=1287.971m$
NO.109+300	109+300.0	612.85	612.889	599.328
NO.109+400	109+400.0	613.30	613.568	$i=1.402\%$ $L=1362.451m$
NO.109+500	109+500.0	613.37	613.642	618.434
NO.109+600	109+600.0	612.59	613.061	
NO.109+700	109+700.0	611.76	611.942	
NO.109+800	109+800.0	609.99	610.771	
NO.109+900	109+900.0	608.35	609.601	
NO.110+000	110+000.0	607.52	608.431	
NO.110+100	110+100.0	606.92	607.260	
NO.110+200	110+200.0	605.81	606.090	
NO.110+300	110+300.0	605.22	604.919	
NO.110+400	110+400.0	604.62	603.749	
NO.110+500	110+500.0	603.04	602.578	
NO.110+600	110+600.0	600.55	601.408	
NO.110+700	110+700.0	599.47	600.269	
NO.110+800	110+800.0	599.10	600.029	
NO.110+900	110+900.0	599.77	601.043	
NO.111+000	111+000.0	601.26	602.445	
NO.111+100	111+100.0	603.14	603.848	
NO.111+200	111+200.0	605.23	605.250	
NO.111+300	111+300.0	606.88	606.652	
NO.111+400	111+400.0	608.55	608.055	
NO.111+500	111+500.0	610.33	609.457	
NO.111+600	111+600.0	611.59	610.859	
NO.111+700	111+700.0	613.07	612.262	
NO.111+800	111+800.0	614.38	613.664	
NO.111+900	111+900.0	615.10	615.065	
NO.112+000	112+000.0	616.25	616.370	
NO.112+100	112+100.0	617.58	617.512	
NO.112+200	112+200.0	619.22	619.207	

 JAPAN INTERNATIONAL COOPERATION AGENCY
 NATIONAL ROAD ADMINISTRATION

REMARKS:

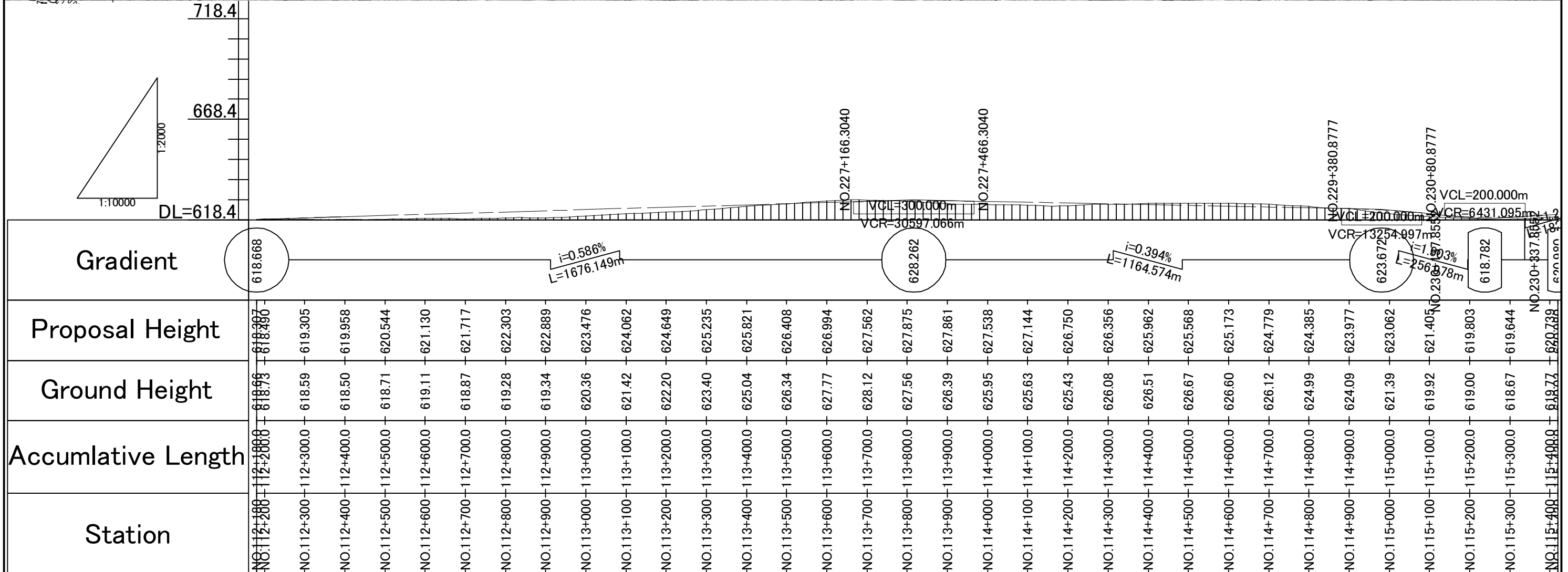
THE STUDY ON UPGRADING OF NAMPULA - CUAMBA ROAD

 ORIENTAL CONSULTANTS CO., LTD.
 JAPAN ENGINEERING CONSULTANTS CO., LTD.

DRAWING TITLE
Plan and Profile (37/115)

NAME	PREPARED BY	CHECKED BY	APPROVED BY
SIGNATURE			
DATE			

SCALE	SHEET NO.	DRAWING NO.	REV. NO.
1: 10,000		38	-



JICA JAPAN INTERNATIONAL COOPERATION AGENCY

ANR NATIONAL ROAD ADMINISTRATION

REMARKS:

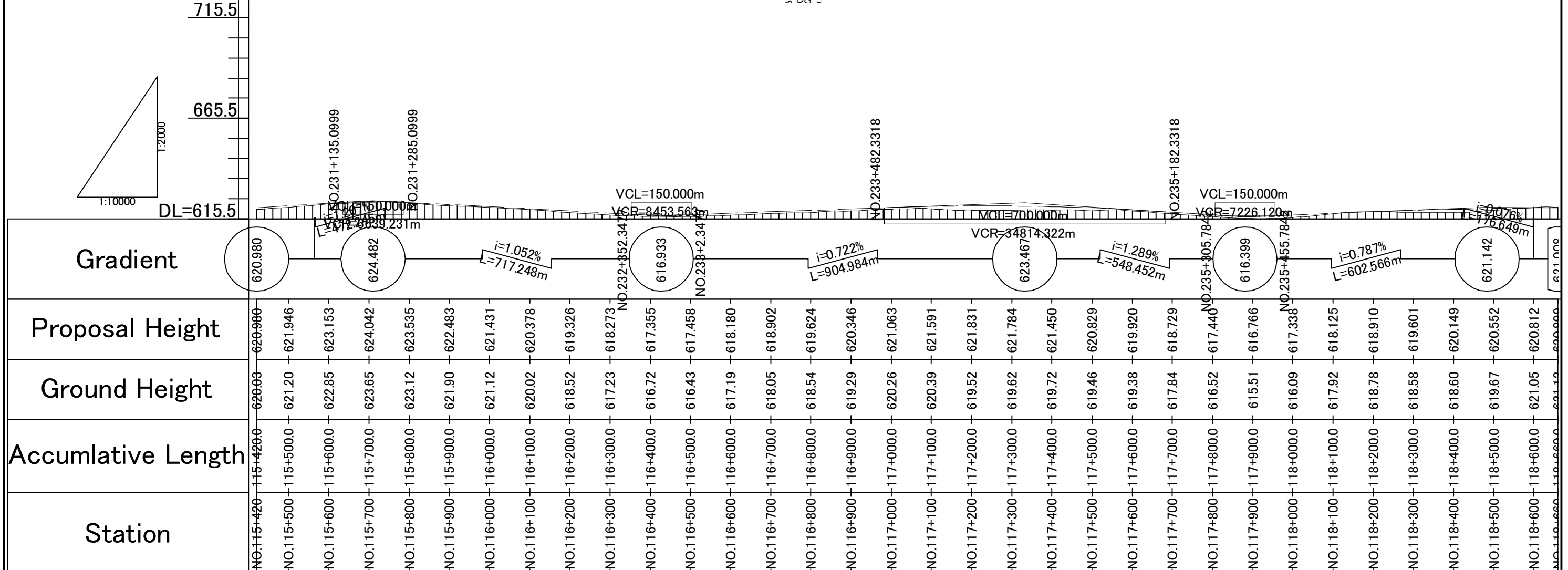
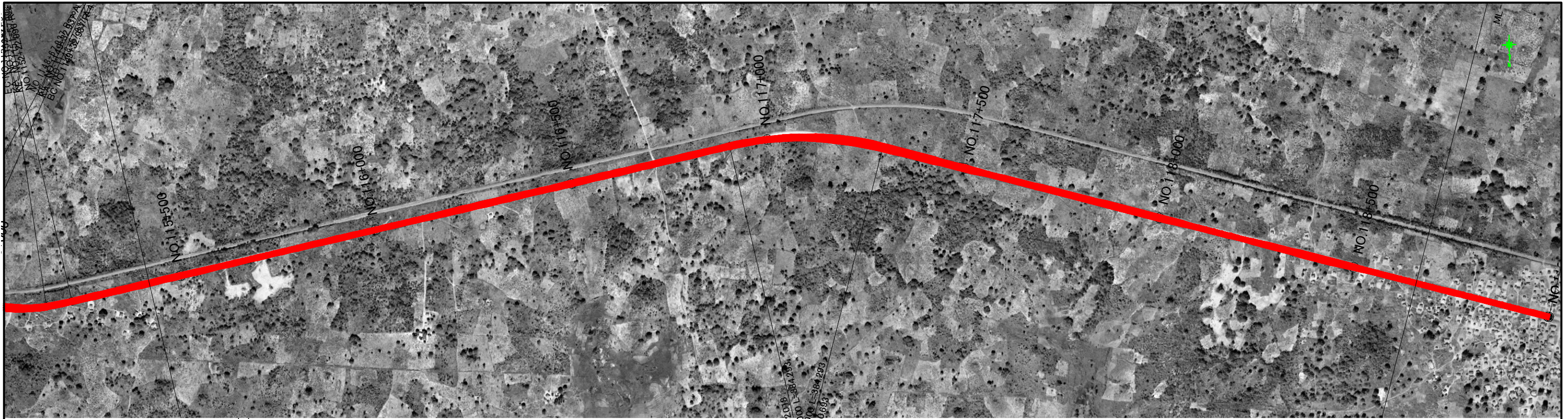
THE STUDY ON UPGRADING OF NAMPULA - CUAMBA ROAD

ORIENTAL CONSULTANTS CO., LTD.
JAPAN ENGINEERING CONSULTANTS CO., LTD.

DRAWING TITLE
Plan and Profile (38/115)

NAME	PREPARED BY	CHECKED BY	APPROVED BY
SIGNATURE			
DATE			

SCALE	SHEET NO.	DRAWING NO.	REV. NO.
1: 10,000		39	-



JICA JAPAN INTERNATIONAL COOPERATION AGENCY

ANR NATIONAL ROAD ADMINISTRATION

REMARKS:

THE STUDY ON UPGRADING OF NAMPULA - CUAMBA ROAD

ORINTAL CONSULTANTS CO., LTD.
JAPAN ENGINEERING CONSULTANTS CO., LTD.

DRAWING TITLE
Plan and Profile (39/115)

NAME	PREPARED BY	CHECKED BY	APPROVED BY
SIGNATURE			
DATE			

SCALE	SHEET NO.	DRAWING NO.	REV. NO.
1: 10,000	40	40	-