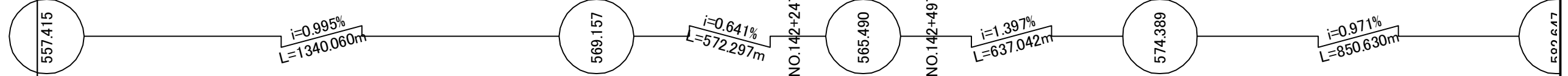


Station	Accumulative Length	Ground Height	Proposal Height
NO.69+620	69+620.0	556.52	557.602
NO.69+700	69+700.0	557.36	558.213
NO.69+800	69+800.0	558.69	559.206
NO.69+900	69+900.0	560.73	560.201
NO.70+000	70+000.0	562.42	561.196
NO.70+100	70+100.0	563.51	562.191
NO.70+200	70+200.0	563.76	563.186
NO.70+300	70+300.0	564.30	564.181
NO.70+400	70+400.0	565.48	565.176
NO.70+500	70+500.0	566.31	566.171
NO.70+600	70+600.0	567.15	567.166
NO.70+700	70+700.0	567.05	568.093
NO.70+800	70+800.0	566.78	568.543
NO.70+900	70+900.0	567.05	568.448
NO.71+000	71+000.0	567.35	567.875
NO.71+100	71+100.0	567.05	567.235
NO.71+200	71+200.0	566.52	566.594
NO.71+300	71+300.0	566.40	566.066
NO.71+400	71+400.0	566.42	566.262
NO.71+500	71+500.0	567.49	567.273
NO.71+600	71+600.0	568.46	568.670
NO.71+700	71+700.0	570.26	570.067
NO.71+800	71+800.0	570.75	571.464
NO.71+900	71+900.0	572.15	572.861
NO.72+000	72+000.0	573.99	574.197
NO.72+100	72+100.0	573.74	575.268
NO.72+200	72+200.0	574.51	576.239
NO.72+300	72+300.0	576.21	577.210
NO.72+400	72+400.0	578.38	578.181
NO.72+500	72+500.0	580.45	579.152
NO.72+600	72+600.0	582.09	580.122
NO.72+700	72+700.0	582.47	581.093
NO.72+800	72+800.0	582.39	582.064
NO.72+900	72+900.0	581.95	580.422

Gradient



**JICA** JAPAN INTERNATIONAL COOPERATION AGENCY

**ANR** NATIONAL ROAD ADMINISTRATION

REMARKS:

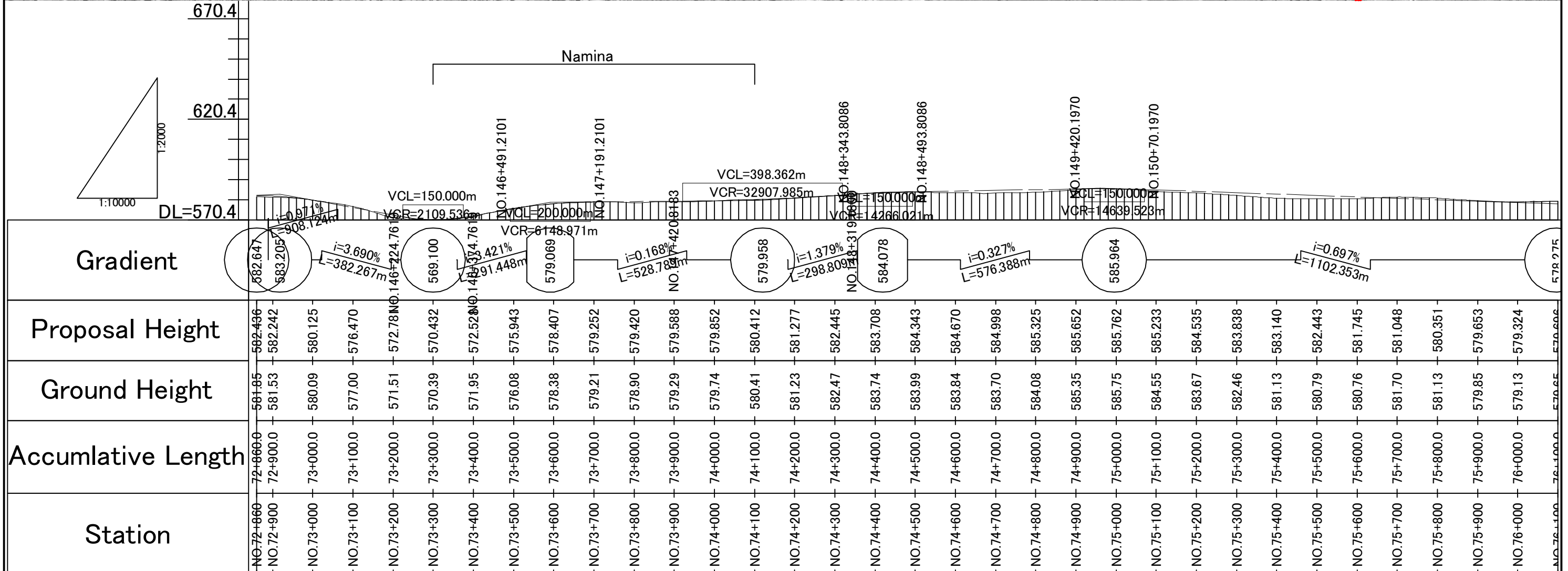
**THE STUDY ON UPGRADING OF NAMPULA - CUAMBA ROAD**

ORINTAL CONSULTANTS CO., LTD.  
JAPAN ENGINEERING CONSULTANTS CO., LTD.

DRAWING TITLE  
**Plan and Profile (24/115)**

NAME	PREPARED BY	CHECKED BY	APPROVED BY
SIGNATURE			
DATE			

SCALE	SHEET NO.	DRAWING NO.	REV. NO.
1: 10,000		25	-



Station	Accumulative Length	Ground Height	Proposal Height	Gradient
NO.72+660	72+660.0	581.85	582.436	582.641
NO.72+900	72+900.0	581.53	582.242	583.205
NO.73+000	73+000.0	580.09	580.125	580.124
NO.73+100	73+100.0	577.00	576.470	577.000
NO.73+200	73+200.0	571.51	572.780	572.780
NO.73+300	73+300.0	570.39	570.432	570.390
NO.73+400	73+400.0	571.95	572.520	571.950
NO.73+500	73+500.0	576.08	575.943	574.760
NO.73+600	73+600.0	578.38	578.407	579.069
NO.73+700	73+700.0	579.21	579.252	579.252
NO.73+800	73+800.0	578.90	579.420	578.900
NO.73+900	73+900.0	579.29	579.588	579.290
NO.74+000	74+000.0	579.74	579.852	579.740
NO.74+100	74+100.0	580.41	580.412	580.410
NO.74+200	74+200.0	581.23	581.277	581.230
NO.74+300	74+300.0	582.47	582.445	582.445
NO.74+400	74+400.0	583.74	583.708	583.708
NO.74+500	74+500.0	583.99	584.343	584.078
NO.74+600	74+600.0	583.84	584.670	584.670
NO.74+700	74+700.0	583.70	584.998	584.998
NO.74+800	74+800.0	584.08	585.325	585.325
NO.74+900	74+900.0	585.35	585.652	585.652
NO.75+000	75+000.0	585.75	585.762	585.762
NO.75+100	75+100.0	584.55	585.233	585.233
NO.75+200	75+200.0	583.67	584.535	584.535
NO.75+300	75+300.0	582.46	583.838	583.838
NO.75+400	75+400.0	581.13	583.140	583.140
NO.75+500	75+500.0	580.79	582.443	582.443
NO.75+600	75+600.0	580.76	581.745	581.745
NO.75+700	75+700.0	581.70	581.048	581.048
NO.75+800	75+800.0	581.13	580.351	580.351
NO.75+900	75+900.0	579.85	579.653	579.653
NO.76+000	76+000.0	579.13	579.324	579.324
NO.76+100	76+100.0	570.65	570.604	570.604

**JICA** JAPAN INTERNATIONAL COOPERATION AGENCY

**ANE** NATIONAL ROAD ADMINISTRATION

REMARKS:

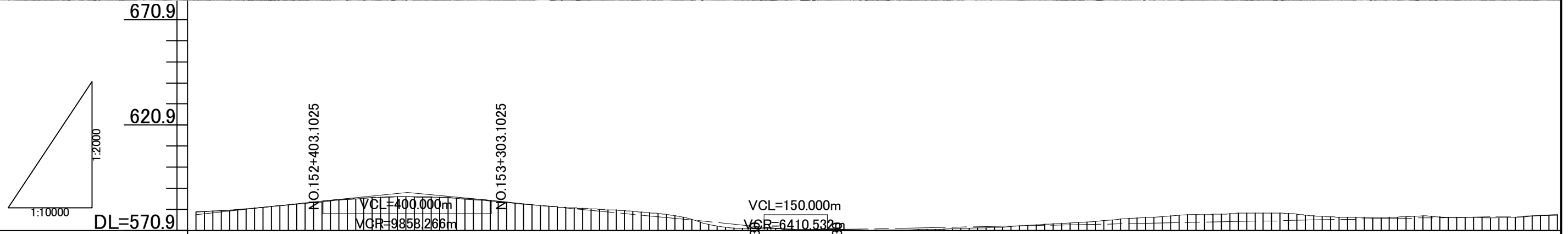
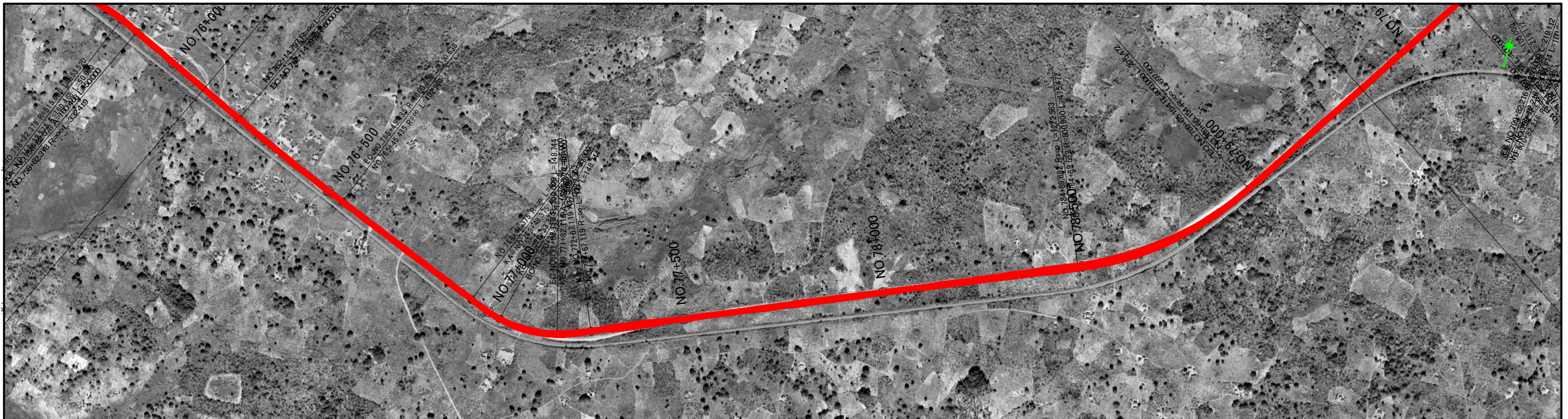
**THE STUDY ON UPGRADING OF NAMPULA - CUAMBA ROAD**

ORINTAL CONSULTANTS CO., LTD.  
JAPAN ENGINEERING CONSULTANTS CO., LTD.

DRAWING TITLE  
Plan and Profile (25/115)

NAME	PREPARED BY	CHECKED BY	APPROVED BY
SIGNATURE			
DATE			

SCALE	SHEET NO.	DRAWING NO.	REV. NO.
1: 10,000		26	-





Station	Accumulative Length	Ground Height	Proposal Height	Gradient
NO.76+100	76+100.0	579.65	579.696	578.327
NO.76+200	76+200.0	580.76	580.770	i=2.109% L=505.553m
NO.76+300	76+300.0	582.49	582.545	
NO.76+400	76+400.0	584.42	584.654	
NO.76+500	76+500.0	586.05	586.287	
NO.76+600	76+600.0	586.75	586.905	i=1.949% L=924.290m
NO.76+700	76+700.0	586.30	586.510	
NO.76+800	76+800.0	584.76	585.100	
NO.76+900	76+900.0	582.91	583.152	
NO.77+000	77+000.0	581.51	581.203	VCL=150.000m MGR=6410.532m
NO.77+100	77+100.0	580.46	579.255	
NO.77+200	77+200.0	578.88	577.306	
NO.77+300	77+300.0	574.79	575.358	
NO.77+400	77+400.0	571.82	573.409	570.927
NO.77+500	77+500.0	571.47	571.637	
NO.77+600	77+600.0	571.37	571.211	
NO.77+700	77+700.0	570.88	571.602	
NO.77+800	77+800.0	571.10	571.994	i=0.391% L=1812.607m
NO.77+900	77+900.0	571.61	572.385	
NO.78+000	78+000.0	572.26	572.776	
NO.78+100	78+100.0	573.53	573.168	
NO.78+200	78+200.0	574.61	573.559	579.020
NO.78+300	78+300.0	576.20	573.950	
NO.78+400	78+400.0	577.42	574.342	
NO.78+500	78+500.0	578.31	574.733	
NO.78+600	78+600.0	579.15	575.124	579.020
NO.78+700	78+700.0	578.86	575.515	
NO.78+800	78+800.0	577.25	575.907	
NO.78+900	78+900.0	576.79	576.298	
NO.79+000	79+000.0	577.65	576.689	579.020
NO.79+100	79+100.0	576.94	577.081	
NO.79+200	79+200.0	576.87	577.472	
NO.79+300	79+300.0	578.00	577.863	

 JAPAN INTERNATIONAL COOPERATION AGENCY  
 NATIONAL ROAD ADMINISTRATION

REMARKS:

**THE STUDY ON UPGRADING OF NAMPULA - CUAMBA ROAD**

 ORIENTAL CONSULTANTS CO., LTD.  
 JAPAN ENGINEERING CONSULTANTS CO., LTD.

DRAWING TITLE

Plan and Profile (26/115)

NAME	PREPARED BY	CHECKED BY	APPROVED BY
SIGNATURE			
DATE			

SCALE	SHEET NO.	DRAWING NO.	REV. NO.
1: 10,000		27	-



Station	Accumulative Length	Ground Height	Proposal Height	Gradient
NO.79+340	79+340.0	578.27	578.020	578.020
NO.79+400	79+400.0	578.65	578.255	$i=0.391\%$ $L=2508.240m$
NO.79+500	79+500.0	579.05	578.646	580.742
NO.79+600	79+600.0	579.34	579.037	$i=2.381\%$ $L=1484.134m$
NO.79+700	79+700.0	579.59	579.429	545.402
NO.79+800	79+800.0	579.77	579.820	$i=3.259\%$ $L=6267.28m$
NO.79+900	79+900.0	579.94	580.202	565.784
NO.80+000	80+000.0	579.50	579.998	$i=0.759\%$ $L=433.806m$
NO.80+100	80+100.0	578.47	578.871	562.400
NO.80+200	80+200.0	577.20	576.828	
NO.80+300	80+300.0	573.68	574.447	
NO.80+400	80+400.0	570.07	572.066	
NO.80+500	80+500.0	567.09	569.685	
NO.80+600	80+600.0	565.04	567.303	
NO.80+700	80+700.0	563.15	564.922	
NO.80+800	80+800.0	561.36	562.541	
NO.80+900	80+900.0	559.80	560.160	
NO.81+000	81+000.0	558.06	557.778	
NO.81+100	81+100.0	556.07	555.397	
NO.81+200	81+200.0	554.17	553.016	
NO.81+300	81+300.0	552.57	550.937	
NO.81+400	81+400.0	550.97	549.779	
NO.81+500	81+500.0	549.52	549.560	
NO.81+600	81+600.0	549.50	550.280	
NO.81+700	81+700.0	551.11	551.940	
NO.81+800	81+800.0	554.45	554.538	
NO.81+900	81+900.0	558.51	557.774	
NO.82+000	82+000.0	560.63	561.026	
NO.82+100	82+100.0	562.87	563.560	
NO.82+200	82+200.0	564.01	564.757	
NO.82+300	82+300.0	562.57	564.616	
NO.82+400	82+400.0	561.65	563.857	
NO.82+500	82+500.0	561.48	563.097	
NO.82+500	82+500.0	559.55	562.400	

REMARKS:

JAPAN INTERNATIONAL COOPERATION AGENCY  
 NATIONAL ROAD ADMINISTRATION

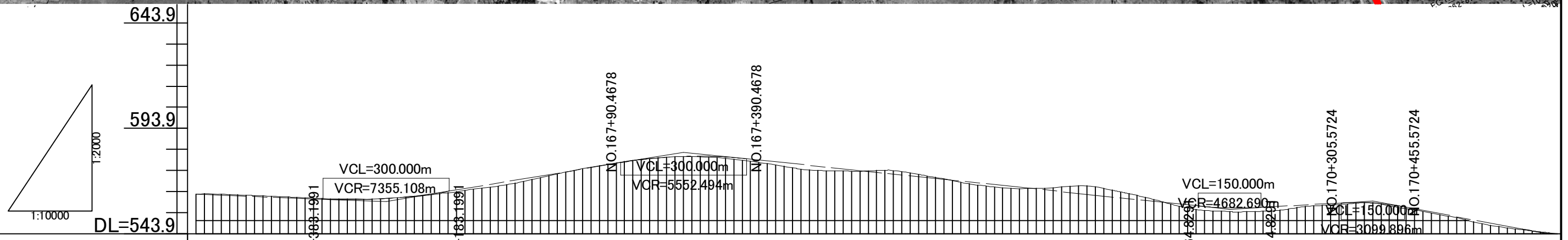
**THE STUDY ON UPGRADING OF NAMPULA - CUAMBA ROAD**

ORIENTAL CONSULTANTS CO., LTD.  
 JAPAN ENGINEERING CONSULTANTS CO., LTD.

DRAWING TITLE  
Plan and Profile (27/115)

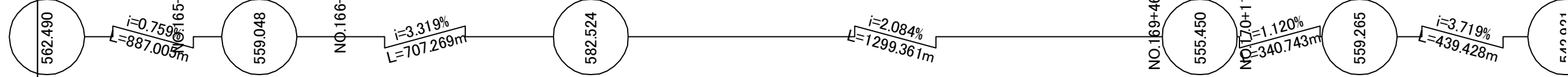
NAME	PREPARED BY	CHECKED BY	APPROVED BY
SIGNATURE			
DATE			

SCALE	SHEET NO.	DRAWING NO.	REV. NO.
1: 10,000		28	-



Station	Accumulative Length	Ground Height	Proposal Height
NO.82+680	82+680.0	562.55	562.490
NO.82+700	82+700.0	562.338	562.490
NO.82+800	82+800.0	561.24	561.578
NO.82+900	82+900.0	560.43	560.078
NO.83+000	83+000.0	560.26	560.227
NO.83+100	83+100.0	561.49	561.735
NO.83+200	83+200.0	563.76	564.584
NO.83+300	83+300.0	566.43	567.903
NO.83+400	83+400.0	570.37	571.223
NO.83+500	83+500.0	574.63	574.542
NO.83+600	83+600.0	578.05	577.853
NO.83+700	83+700.0	580.23	580.100
NO.83+800	83+800.0	580.19	580.546
NO.83+900	83+900.0	578.17	579.200
NO.84+000	84+000.0	575.08	577.116
NO.84+100	84+100.0	573.64	575.032
NO.84+200	84+200.0	573.76	572.949
NO.84+300	84+300.0	571.95	570.865
NO.84+400	84+400.0	568.22	568.781
NO.84+500	84+500.0	565.65	566.698
NO.84+600	84+600.0	565.46	564.614
NO.84+700	84+700.0	566.54	562.530
NO.84+800	84+800.0	562.84	560.447
NO.84+900	84+900.0	557.85	558.363
NO.85+000	85+000.0	554.59	556.412
NO.85+100	85+100.0	554.38	556.147
NO.85+200	85+200.0	556.21	557.243
NO.85+300	85+300.0	557.65	558.362
NO.85+400	85+400.0	557.97	558.044
NO.85+500	85+500.0	554.36	554.823
NO.85+600	85+600.0	550.47	551.104
NO.85+700	85+700.0	546.56	547.384
NO.85+800	85+800.0	544.29	544.018

Gradient



**JICA** JAPAN INTERNATIONAL COOPERATION AGENCY

**ANR** NATIONAL ROAD ADMINISTRATION

REMARKS:

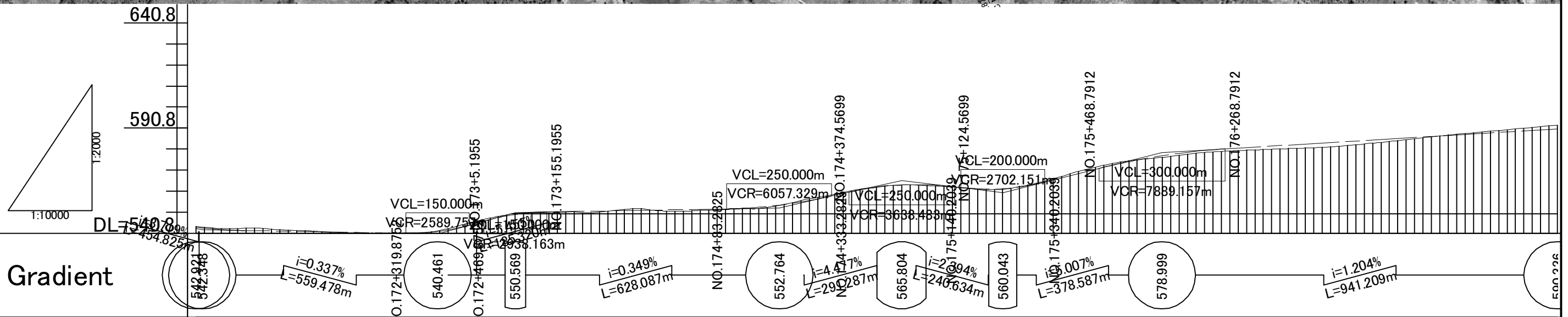
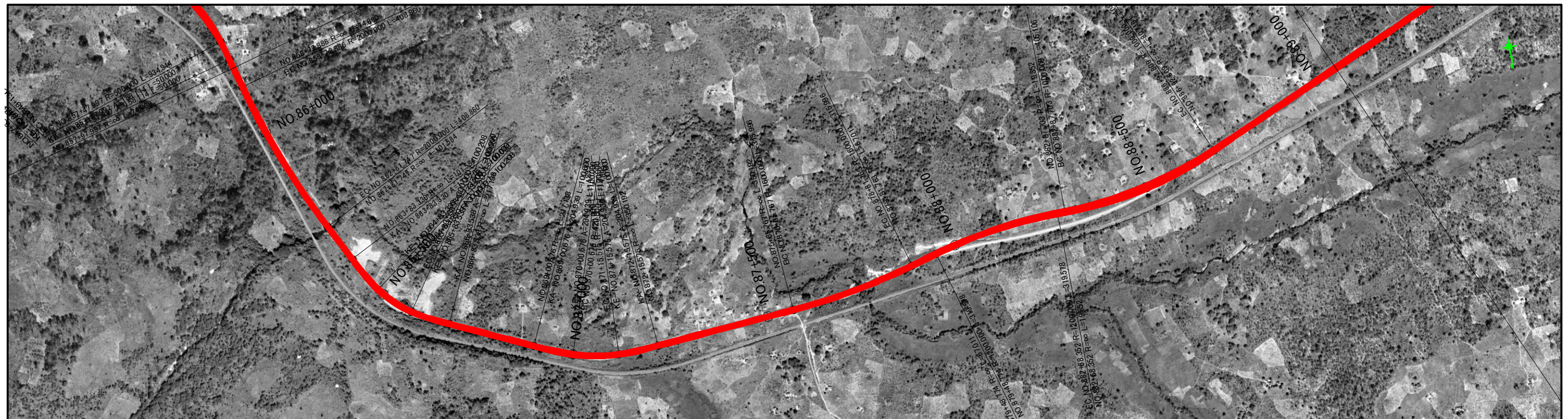
**THE STUDY ON UPGRADING OF NAMPULA - CUAMBA ROAD**

ORIENTAL CONSULTANTS CO., LTD.  
JAPAN ENGINEERING CONSULTANTS CO., LTD.

DRAWING TITLE  
Plan and Profile (28/115)

NAME	PREPARED BY	CHECKED BY	APPROVED BY
SIGNATURE			
DATE			

SCALE	SHEET NO.	DRAWING NO.	REV. NO.
1: 10,000		29	-



Station	Accumulative Length	Ground Height	Proposal Height
NO.85+020	85+020.0	543.88	543.526
NO.85+900	85+900.0	542.83	542.236
NO.86+000	86+000.0	542.66	541.793
NO.86+100	86+100.0	541.74	541.456
NO.86+200	86+200.0	540.86	541.118
NO.86+300	86+300.0	540.78	540.78
NO.86+400	86+400.0	542.02	541.683
NO.86+500	86+500.0	547.07	546.195
NO.86+600	86+600.0	550.48	550.120
NO.86+700	86+700.0	550.75	550.988
NO.86+800	86+800.0	551.11	551.338
NO.86+900	86+900.0	551.84	551.687
NO.87+000	87+000.0	551.34	552.036
NO.87+100	87+100.0	552.22	552.409
NO.87+200	87+200.0	553.69	553.860
NO.87+300	87+300.0	557.81	556.961
NO.87+400	87+400.0	561.60	561.258
NO.87+500	87+500.0	563.62	563.661
NO.87+600	87+600.0	562.91	563.317
NO.87+700	87+700.0	561.57	561.667
NO.87+800	87+800.0	563.68	563.336
NO.87+900	87+900.0	568.97	568.044
NO.88+000	88+000.0	573.85	572.989
NO.88+100	88+100.0	576.41	576.967
NO.88+200	88+200.0	578.78	579.677
NO.88+300	88+300.0	580.02	581.182
NO.88+400	88+400.0	580.80	582.386
NO.88+500	88+500.0	581.51	583.591
NO.88+600	88+600.0	583.17	584.795
NO.88+700	88+700.0	585.14	586.000
NO.88+800	88+800.0	587.48	587.204
NO.88+900	88+900.0	589.23	588.409
NO.89+000	89+000.0	591.04	589.613

**JICA** JAPAN INTERNATIONAL COOPERATION AGENCY

**ANE** NATIONAL ROAD ADMINISTRATION

REMARKS:

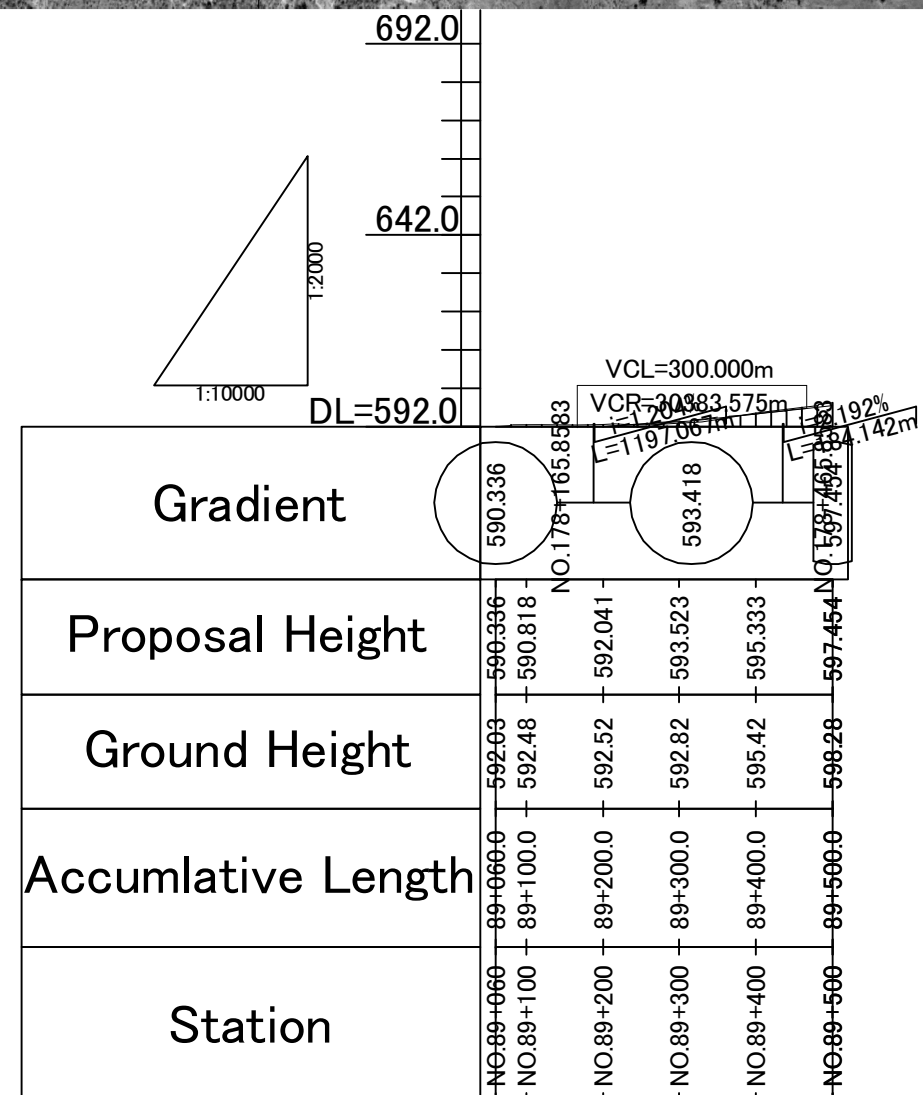
**THE STUDY ON UPGRADING OF NAMPULA - CUAMBA ROAD**

ORIENTAL CONSULTANTS CO., LTD.  
JAPAN ENGINEERING CONSULTANTS CO., LTD.

DRAWING TITLE  
Plan and Profile (29/115)

NAME	PREPARED BY	CHECKED BY	APPROVED BY
SIGNATURE			
DATE			

SCALE	SHEET NO.	DRAWING NO.	REV. NO.
1: 10,000		30	-



**JICA** JAPAN INTERNATIONAL COOPERATION AGENCY

**ANE** NATIONAL ROAD ADMINISTRATION

REMARKS:

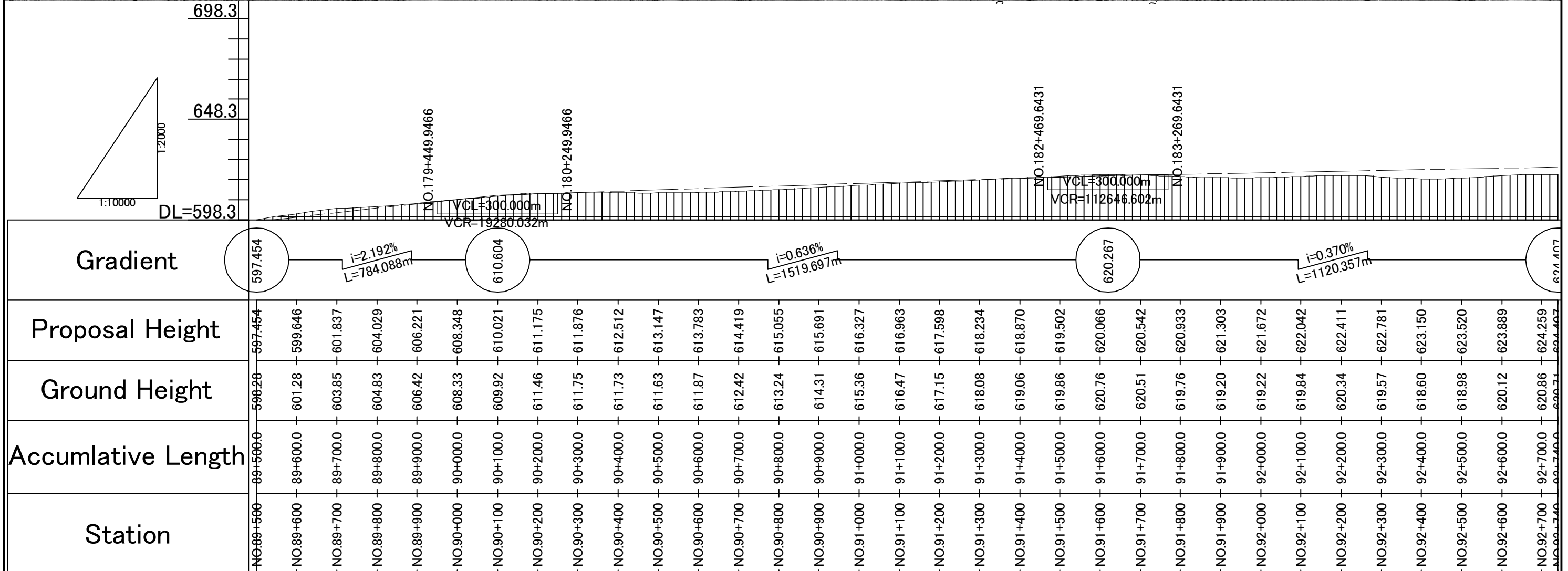
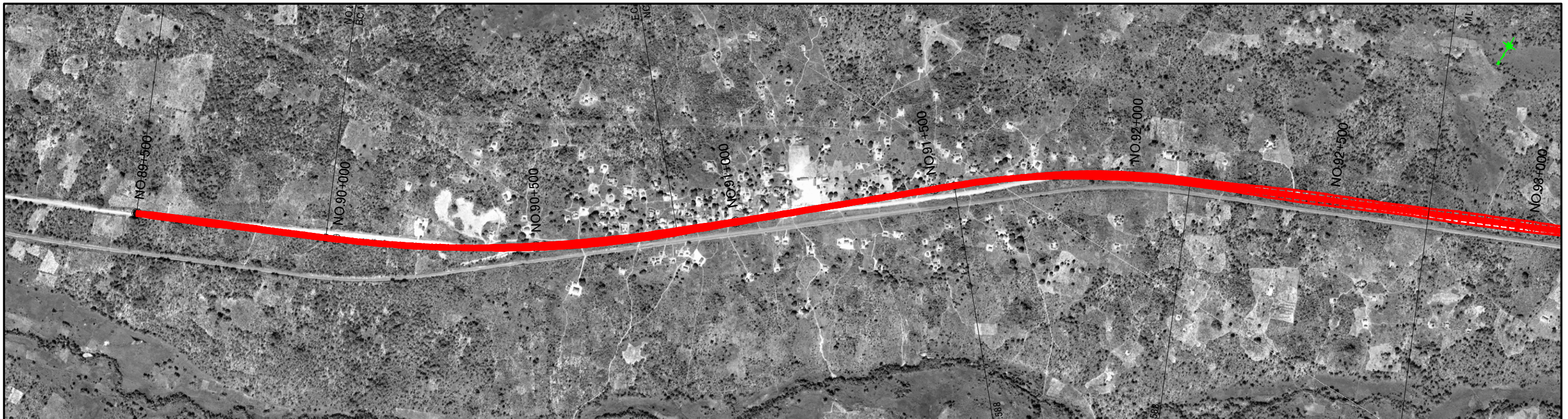
**THE STUDY ON UPGRADING OF NAMPULA - CUAMBA ROAD**

ORIENTAL CONSULTANTS CO., LTD.  
JAPAN ENGINEERING CONSULTANTS CO., LTD.

DRAWING TITLE  
**Plan and Profile (30/115)**

NAME	PREPARED BY	CHECKED BY	APPROVED BY
SIGNATURE			
DATE			

SCALE	SHEET NO.	DRAWING NO.	REV. NO.
1: 10,000		31	-



Station	Accumulative Length	Ground Height	Proposal Height	Gradient
NO.89+500	89+500.0	598.28	597.454	597.454
NO.89+600	89+600.0	601.28	599.646	
NO.89+700	89+700.0	603.85	601.837	
NO.89+800	89+800.0	604.83	604.029	
NO.89+900	89+900.0	606.42	606.221	
NO.90+000	90+000.0	608.33	608.348	
NO.90+100	90+100.0	609.92	610.021	
NO.90+200	90+200.0	611.46	611.175	
NO.90+300	90+300.0	611.75	611.876	
NO.90+400	90+400.0	611.73	612.512	
NO.90+500	90+500.0	611.63	613.147	
NO.90+600	90+600.0	611.87	613.783	
NO.90+700	90+700.0	612.42	614.419	
NO.90+800	90+800.0	613.24	615.055	
NO.90+900	90+900.0	614.31	615.691	
NO.91+000	91+000.0	615.36	616.327	
NO.91+100	91+100.0	616.47	616.963	
NO.91+200	91+200.0	617.15	617.598	
NO.91+300	91+300.0	618.08	618.234	
NO.91+400	91+400.0	619.06	618.870	
NO.91+500	91+500.0	619.86	619.502	
NO.91+600	91+600.0	620.76	620.066	
NO.91+700	91+700.0	620.51	620.542	
NO.91+800	91+800.0	619.76	620.933	
NO.91+900	91+900.0	619.20	621.303	
NO.92+000	92+000.0	619.22	621.672	
NO.92+100	92+100.0	619.84	622.042	
NO.92+200	92+200.0	620.34	622.411	
NO.92+300	92+300.0	619.57	622.781	
NO.92+400	92+400.0	618.60	623.150	
NO.92+500	92+500.0	618.98	623.520	
NO.92+600	92+600.0	620.12	623.889	
NO.92+700	92+700.0	620.86	624.259	
NO.92+800	92+800.0	620.71	624.628	
NO.92+900	92+900.0	620.71	624.997	

**JICA** JAPAN INTERNATIONAL COOPERATION AGENCY

**ANR** NATIONAL ROAD ADMINISTRATION

REMARKS:

**THE STUDY ON UPGRADING OF NAMPULA - CUAMBA ROAD**

ORINTAL CONSULTANTS CO., LTD.  
JAPAN ENGINEERING CONSULTANTS CO., LTD.

DRAWING TITLE  
Plan and Profile (31/115)

NAME	PREPARED BY	CHECKED BY	APPROVED BY
SIGNATURE			
DATE			

SCALE	SHEET NO.	DRAWING NO.	REV. NO.
1: 10,000		32	-