

Station	Accumulative Length	Ground Height	Proposal Height	Gradient
NO.46+200	46+200.0	440.67	439.853	439.776
NO.46+300	46+300.0	442.90	441.828	NO.92+324.9705
NO.46+400	46+400.0	444.23	444.286	443.879
NO.46+500	46+500.0	448.35	448.101	NO.93+70.8239
NO.46+600	46+600.0	452.56	452.169	454.257
NO.46+700	46+700.0	452.56	453.531	NO.94+50.0260
NO.46+800	46+800.0	452.03	452.625	NO.94+220.8239
NO.46+900	46+900.0	453.64	453.126	451.216
NO.47+000	47+000.0	455.44	455.326	NO.94+89.3665
NO.47+100	47+100.0	459.30	459.006	464.445
NO.47+200	47+200.0	462.71	462.312	NO.94+389.3665
NO.47+300	47+300.0	462.78	464.639	464.445
NO.47+400	47+400.0	463.58	465.994	NO.96+62.6892
NO.47+500	47+500.0	465.66	466.958	NO.96+212.6892
NO.47+600	47+600.0	466.78	467.922	473.107
NO.47+700	47+700.0	467.82	468.886	467.662
NO.47+800	47+800.0	469.70	469.851	NO.97+139.9930
NO.47+900	47+900.0	470.60	470.815	467.662
NO.48+000	48+000.0	471.38	471.779	NO.97+439.9930
NO.48+100	48+100.0	471.58	472.660	483.013
NO.48+200	48+200.0	471.34	472.577	483.013
NO.48+300	48+300.0	470.99	471.752	483.013
NO.48+400	48+400.0	471.00	470.917	483.013
NO.48+500	48+500.0	469.30	470.083	483.013
NO.48+600	48+600.0	467.85	469.248	483.013
NO.48+700	48+700.0	468.01	468.661	483.013
NO.48+800	48+800.0	468.82	469.341	483.013
NO.48+900	48+900.0	471.18	471.398	483.013
NO.49+000	49+000.0	474.36	474.583	483.013
NO.49+100	49+100.0	477.70	477.613	483.013
NO.49+200	49+200.0	479.96	480.046	483.013
NO.49+300	49+300.0	481.67	481.881	483.013
NO.49+400	49+400.0	482.42	483.118	483.013
NO.49+500	49+500.0	483.118	483.118	483.013

JICA JAPAN INTERNATIONAL COOPERATION AGENCY

ANE NATIONAL ROAD ADMINISTRATION

REMARKS:

THE STUDY ON UPGRADING OF NAMPULA - CUAMBA ROAD

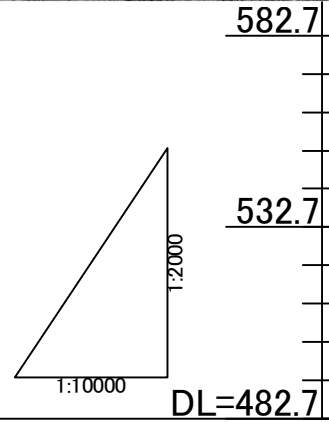
ORIENTAL CONSULTANTS CO., LTD.

JAPAN ENGINEERING CONSULTANTS CO., LTD.

DRAWING TITLE: Plan and Profile (16/115)

NAME	PREPARED BY	CHECKED BY	APPROVED BY
SIGNATURE			
DATE			

SCALE	SHEET NO.	DRAWING NO.	REV. NO.
1: 10,000		17	-



Station	Accumulative Length	Ground Height	Proposal Height	Gradient
NO.49+440	49+440.0	482.73	483.446	483.575
NO.49+500	49+500.0	483.04	483.757	i=0.305% L=977.784m
NO.49+600	49+600.0	483.03	484.064	
NO.49+700	49+700.0	483.24	484.369	NO.100+133.5950
NO.49+800	49+800.0	483.27	484.674	
NO.49+900	49+900.0	483.74	484.979	485.997
NO.50+000	50+000.0	484.00	485.284	
NO.50+100	50+100.0	484.97	485.590	NO.100+333.5950
NO.50+200	50+200.0	485.48	486.190	
NO.50+300	50+300.0	487.28	488.051	507.467
NO.50+400	50+400.0	490.47	490.955	
NO.50+500	50+500.0	494.01	493.935	NO.101+379.2020
NO.50+600	50+600.0	497.25	496.914	
NO.50+700	50+700.0	499.66	499.893	NO.102+29.2020
NO.50+800	50+800.0	502.46	502.873	
NO.50+900	50+900.0	504.92	505.813	507.467
NO.51+000	51+000.0	506.94	507.510	
NO.51+100	51+100.0	507.68	507.851	507.467
NO.51+200	51+200.0	508.02	508.115	
NO.51+300	51+300.0	508.41	508.378	i=2.979% L=720.607m
NO.51+400	51+400.0	509.21	508.642	
NO.51+500	51+500.0	508.80	508.906	NO.101+150.0000
NO.51+600	51+600.0	508.60	509.169	
NO.51+700	51+700.0	508.25	509.433	VCR=5523.466m
NO.51+800	51+800.0	508.47	509.697	
NO.51+900	51+900.0	509.29	509.960	i=0.264% L=1725.798m
NO.52+000	52+000.0	510.34	510.224	
NO.52+100	52+100.0	511.10	510.488	512.017
NO.52+200	52+200.0	510.92	510.751	
NO.52+300	52+300.0	510.05	511.015	511.015
NO.52+400	52+400.0	509.47	511.279	
NO.52+500	52+500.0	509.33	511.542	511.542
NO.52+600	52+600.0	510.36	511.793	
NO.53+000	53+000.0	511.41	511.015	512.017

JAPAN INTERNATIONAL COOPERATION AGENCY
 NATIONAL ROAD ADMINISTRATION

REMARKS:

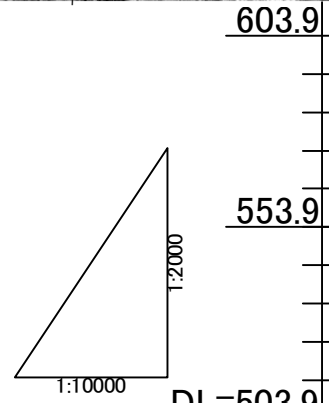
THE STUDY ON UPGRADING OF NAMPULA - CUAMBA ROAD

ORIENTAL CONSULTANTS CO., LTD.
 JAPAN ENGINEERING CONSULTANTS CO., LTD.

DRAWING TITLE
Plan and Profile (17/115)

NAME	PREPARED BY	CHECKED BY	APPROVED BY
SIGNATURE			
DATE			

SCALE	SHEET NO.	DRAWING NO.	REV. NO.
1: 10,000	18	18	-



Station	Accumulative Length	Ground Height	Proposal Height	Gradient	Remarks
NO.52+800	52+800.0	511.78	511.935		
NO.52+900	52+900.0	511.48	511.832	i=0.26% L=1750.998m	
NO.53+000	53+000.0	511.31	511.704		
NO.53+100	53+100.0	511.08	511.575		
NO.53+200	53+200.0	511.31	511.173		
NO.53+300	53+300.0	509.75	509.870	i=1.569% L=366.208m	
NO.53+400	53+400.0	507.65	508.301		
NO.53+500	53+500.0	506.73	506.739		
NO.53+600	53+600.0	505.85	506.206		
NO.53+700	53+700.0	507.11	507.115		
NO.53+800	53+800.0	508.13	508.169		
NO.53+900	53+900.0	508.85	509.081		
NO.54+000	54+000.0	508.58	508.597		
NO.54+100	54+100.0	507.08	507.125		
NO.54+200	54+200.0	505.45	505.647		
NO.54+300	54+300.0	504.32	504.169		
NO.54+400	54+400.0	504.04	503.926		
NO.54+500	54+500.0	505.75	506.149		
NO.54+600	54+600.0	508.24	508.510		
NO.54+700	54+700.0	509.16	509.834		
NO.54+800	54+800.0	509.01	510.078		
NO.54+900	54+900.0	508.47	509.522		
NO.55+000	55+000.0	508.55	508.923		
NO.55+100	55+100.0	508.64	508.325		
NO.55+200	55+200.0	508.61	507.726		
NO.55+300	55+300.0	508.33	507.128		
NO.55+400	55+400.0	507.19	506.529		
NO.55+500	55+500.0	505.65	505.931		
NO.55+600	55+600.0	505.45	505.763		
NO.55+700	55+700.0	505.59	506.425		
NO.55+800	55+800.0	506.97	507.223		
NO.55+900	55+900.0	507.76	508.021		

JAPAN INTERNATIONAL COOPERATION AGENCY
 NATIONAL ROAD ADMINISTRATION

REMARKS:

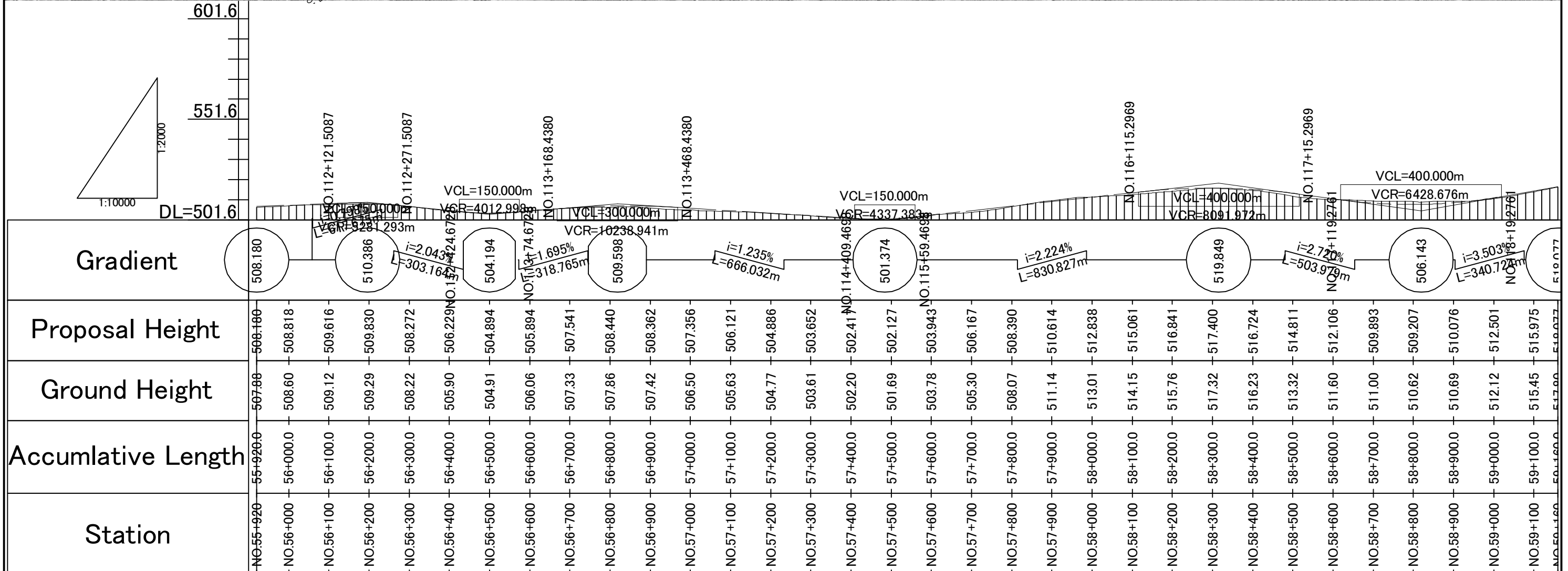
THE STUDY ON UPGRADING OF NAMPULA - CUAMBA ROAD

ORIENTAL CONSULTANTS CO., LTD.
 JAPAN ENGINEERING CONSULTANTS CO., LTD.

DRAWING TITLE
Plan and Profile (18/115)

NAME	PREPARED BY	CHECKED BY	APPROVED BY
SIGNATURE			
DATE			

SCALE	SHEET NO.	DRAWING NO.	REV. NO.
1: 10,000		19	-



Station	Accumulative Length	Ground Height	Proposal Height	Gradient
NO.55+920	55+920.0	507.88	508.180	508.180
NO.56+000	56+000.0	508.60	508.818	510.386
NO.56+100	56+100.0	509.12	509.616	$i=2.043\%$ $L=303.164m$
NO.56+200	56+200.0	509.29	509.830	$i=1.695\%$ $L=318.765m$
NO.56+300	56+300.0	508.22	508.272	$i=1.235\%$ $L=666.032m$
NO.56+400	56+400.0	505.90	506.229	$i=2.224\%$ $L=830.827m$
NO.56+500	56+500.0	504.91	504.894	$i=2.720\%$ $L=503.979m$
NO.56+600	56+600.0	506.06	505.894	$i=3.503\%$ $L=340.722m$
NO.56+700	56+700.0	507.33	507.541	509.598
NO.56+800	56+800.0	507.86	508.440	501.374
NO.56+900	56+900.0	507.42	508.362	509.849
NO.57+000	57+000.0	506.50	507.356	506.143
NO.57+100	57+100.0	505.63	506.121	519.077
NO.57+200	57+200.0	504.77	504.886	
NO.57+300	57+300.0	503.61	503.652	
NO.57+400	57+400.0	502.20	502.417	
NO.57+500	57+500.0	501.69	502.127	
NO.57+600	57+600.0	503.78	503.943	
NO.57+700	57+700.0	505.30	506.167	
NO.57+800	57+800.0	508.07	508.390	
NO.57+900	57+900.0	511.14	510.614	
NO.58+000	58+000.0	513.01	512.838	
NO.58+100	58+100.0	514.15	515.061	
NO.58+200	58+200.0	515.76	516.841	
NO.58+300	58+300.0	517.32	517.400	
NO.58+400	58+400.0	516.23	516.724	
NO.58+500	58+500.0	513.32	514.811	
NO.58+600	58+600.0	511.60	512.106	
NO.58+700	58+700.0	511.00	509.893	
NO.58+800	58+800.0	510.62	509.207	
NO.58+900	58+900.0	510.69	510.076	
NO.59+000	59+000.0	512.12	512.501	
NO.59+100	59+100.0	515.45	515.975	
NO.59+160	59+160.0	517.60	519.077	

JAPAN INTERNATIONAL COOPERATION AGENCY
 NATIONAL ROAD ADMINISTRATION

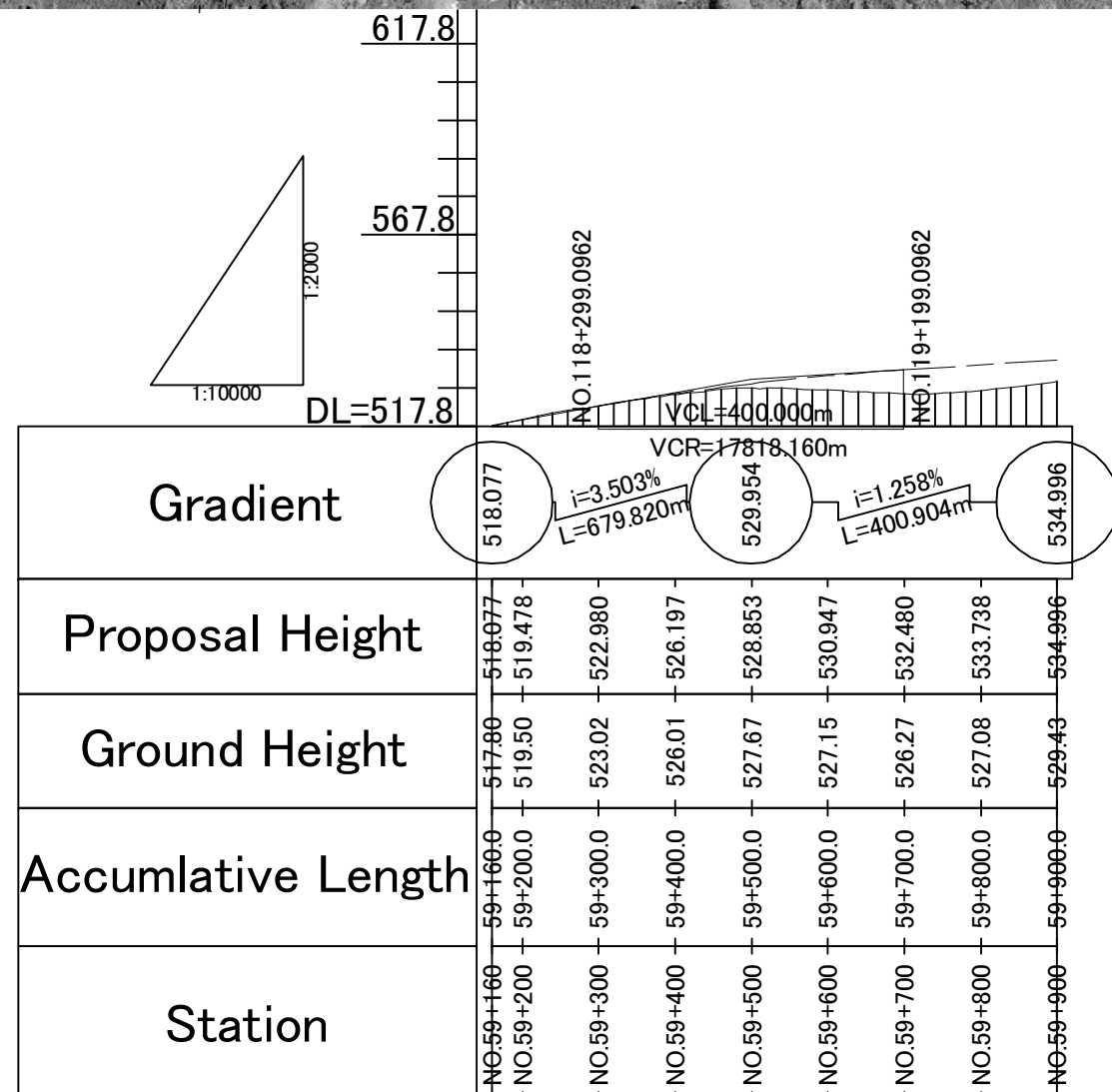
REMARKS:

THE STUDY ON UPGRADING OF NAMPULA - CUAMBA ROAD
 ORIENTAL CONSULTANTS CO., LTD.
 JAPAN ENGINEERING CONSULTANTS CO., LTD.

NAME	PREPARED BY	CHECKED BY	APPROVED BY
SIGNATURE			
DATE			

DRAWING TITLE: Plan and Profile (19/115)

SCALE	SHEET NO.	DRAWING NO.	REV. NO.
1: 10,000		20	-



Station	Accumulative Length	Ground Height	Proposal Height	Gradient
NO.59+160	59+160.0	517.80	518.077	518.077
NO.59+200	59+200.0	519.50	519.478	
NO.59+300	59+300.0	523.02	522.980	
NO.59+400	59+400.0	526.01	526.197	
NO.59+500	59+500.0	527.67	528.853	
NO.59+600	59+600.0	527.15	530.947	
NO.59+700	59+700.0	526.27	532.480	
NO.59+800	59+800.0	527.08	533.738	
NO.59+900	59+900.0	529.43	534.996	534.996

JICA JAPAN INTERNATIONAL COOPERATION AGENCY

ANE NATIONAL ROAD ADMINISTRATION

REMARKS:

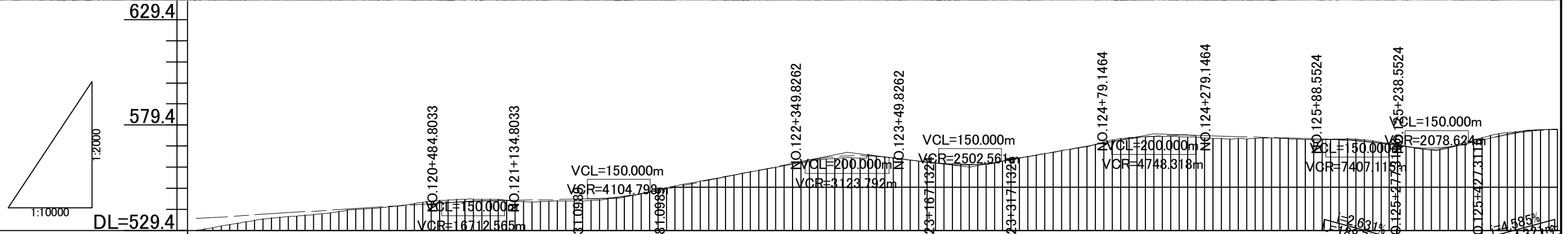
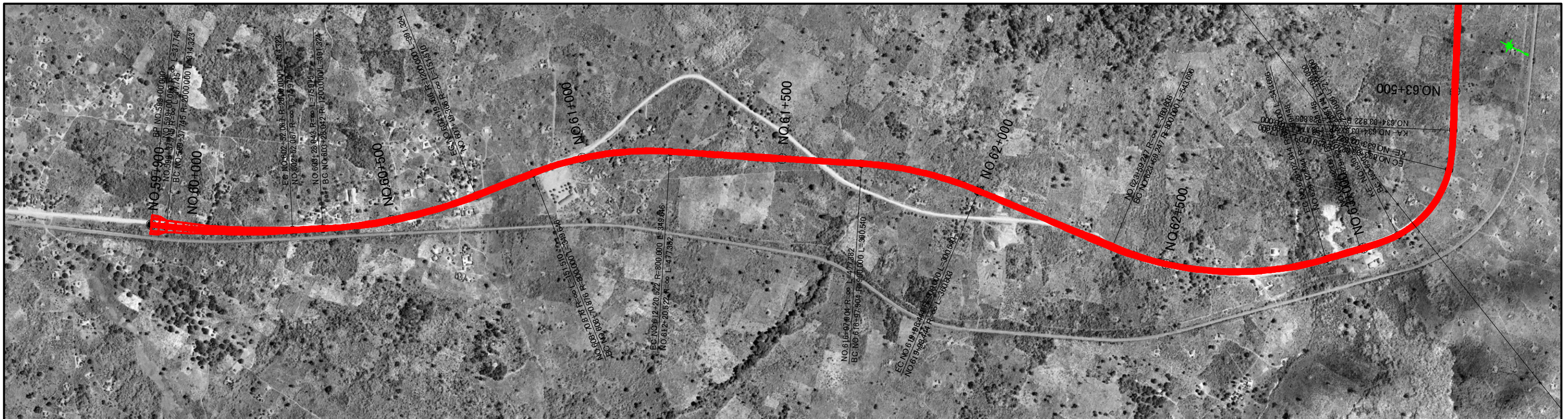
THE STUDY ON UPGRADING OF NAMPULA - CUAMBA ROAD

ORINTAL CONSULTANTS CO., LTD.
JAPAN ENGINEERING CONSULTANTS CO., LTD.

DRAWING TITLE
Plan and Profile (20/115)

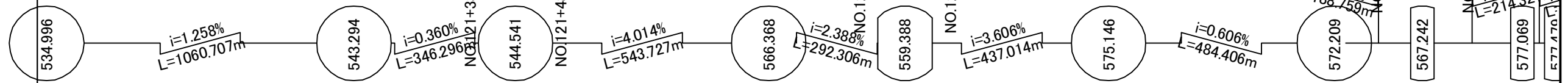
NAME	PREPARED BY	CHECKED BY	APPROVED BY
SIGNATURE			
DATE			

SCALE	SHEET NO.	DRAWING NO.	REV. NO.
1: 10,000		21	-



Station	Accumulative Length	Ground Height	Proposal Height
NO.59+000	59+000.0	529.43	534.996
NO.60+000	60+000.0	532.80	536.253
NO.60+100	60+100.0	535.58	537.511
NO.60+200	60+200.0	537.22	538.769
NO.60+300	60+300.0	539.53	540.026
NO.60+400	60+400.0	541.50	541.284
NO.60+500	60+500.0	543.84	542.535
NO.60+600	60+600.0	544.13	543.402
NO.60+700	60+700.0	543.00	543.799
NO.60+800	60+800.0	543.37	544.159
NO.60+900	60+900.0	544.98	545.097
NO.61+000	61+000.0	548.76	548.310
NO.61+100	61+100.0	552.75	552.325
NO.61+200	61+200.0	556.45	556.339
NO.61+300	61+300.0	560.11	560.354
NO.61+400	61+400.0	563.26	563.965
NO.61+500	61+500.0	565.30	564.773
NO.61+600	61+600.0	562.81	562.782
NO.61+700	61+700.0	561.06	560.610
NO.61+800	61+800.0	561.25	561.533
NO.61+900	61+900.0	565.11	565.080
NO.62+000	62+000.0	568.47	568.686
NO.62+100	62+100.0	572.95	572.246
NO.62+200	62+200.0	574.00	574.360
NO.62+300	62+300.0	573.28	574.413
NO.62+400	62+400.0	572.85	573.807
NO.62+500	62+500.0	572.87	573.200
NO.62+600	62+600.0	572.58	572.585
NO.62+700	62+700.0	571.86	571.150
NO.62+800	62+800.0	568.57	568.742
NO.62+900	62+900.0	569.95	569.608
NO.63+000	63+000.0	575.22	574.004
NO.63+100	63+100.0	577.06	577.023
NO.63+140	63+140.0	577.00	577.470

Gradient



JICA JAPAN INTERNATIONAL COOPERATION AGENCY

ANR NATIONAL ROAD ADMINISTRATION

REMARKS:

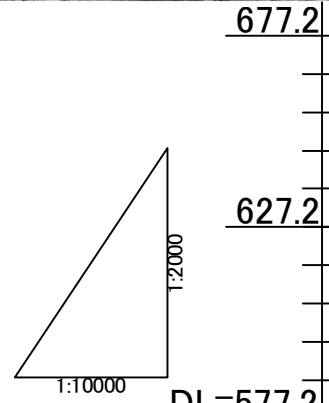
THE STUDY ON UPGRADING OF NAMPULA - CUAMBA ROAD

ORIENTAL CONSULTANTS CO., LTD.
JAPAN ENGINEERING CONSULTANTS CO., LTD.

DRAWING TITLE
Plan and Profile (21/115)

NAME	PREPARED BY	CHECKED BY	APPROVED BY
SIGNATURE			
DATE			

SCALE	SHEET NO.	DRAWING NO.	REV. NO.
1: 10,000		22	-



Station	Accumulative Length	Ground Height	Proposal Height	Gradient
NO.63+140	63+140.0	577.22	577.479	577.479
NO.63+200	63+200.0	577.26	577.815	
NO.63+300	63+300.0	578.21	578.461	
NO.63+400	63+400.0	580.86	580.032	
NO.63+500	63+500.0	583.27	582.287	
NO.63+600	63+600.0	585.41	584.548	
NO.63+700	63+700.0	587.71	586.810	
NO.63+800	63+800.0	588.69	589.071	
NO.63+900	63+900.0	590.56	591.332	
NO.64+000	64+000.0	592.01	592.279	
NO.64+100	64+100.0	590.69	590.683	
NO.64+200	64+200.0	588.11	587.857	
NO.64+300	64+300.0	585.70	585.031	
NO.64+400	64+400.0	582.03	582.206	
NO.64+500	64+500.0	579.53	580.003	
NO.64+600	64+600.0	579.01	580.082	
NO.64+700	64+700.0	579.50	580.914	
NO.64+800	64+800.0	579.73	581.745	
NO.64+900	64+900.0	581.69	582.576	
NO.65+000	65+000.0	583.39	583.408	
NO.65+100	65+100.0	583.91	584.239	
NO.65+200	65+200.0	584.51	585.070	
NO.65+300	65+300.0	584.91	585.819	
NO.65+400	65+400.0	584.43	585.656	
NO.65+500	65+500.0	583.07	584.807	
NO.65+600	65+600.0	582.00	583.951	
NO.65+700	65+700.0	581.79	583.094	
NO.65+800	65+800.0	581.58	582.238	
NO.65+900	65+900.0	581.89	581.383	
NO.66+000	66+000.0	582.08	580.710	
NO.66+100	66+100.0	582.46	580.337	
NO.66+200	66+200.0	582.42	580.265	
NO.66+300	66+300.0	581.72	580.493	
NO.66+400	66+400.0	580.00	580.000	

JAPAN INTERNATIONAL COOPERATION AGENCY
 NATIONAL ROAD ADMINISTRATION

REMARKS:

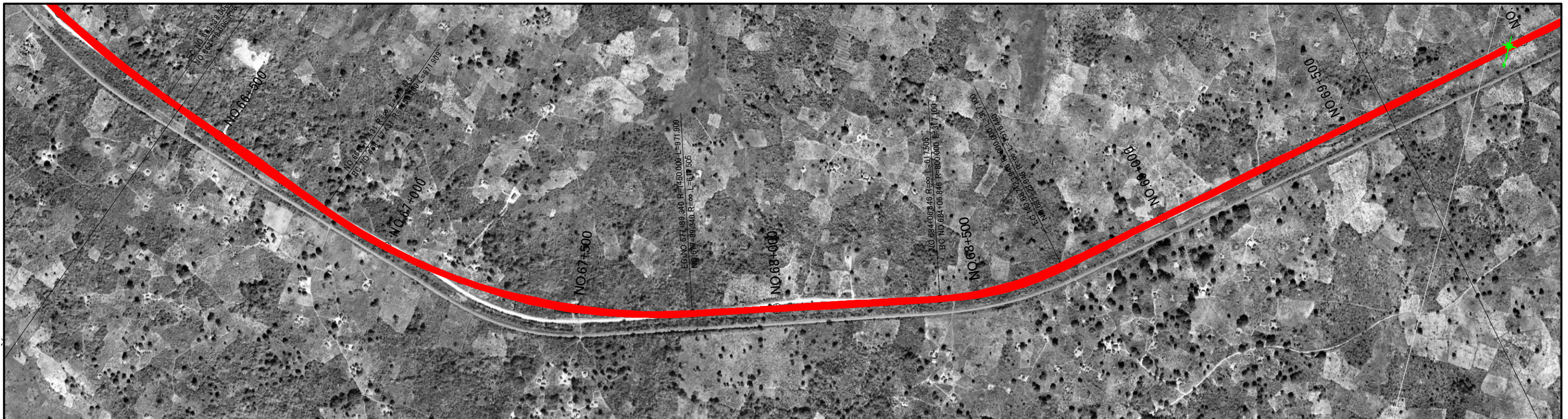
THE STUDY ON UPGRADING OF NAMPULA - CUAMBA ROAD

ORIENTAL CONSULTANTS CO., LTD.
 JAPAN ENGINEERING CONSULTANTS CO., LTD.

DRAWING TITLE
Plan and Profile (22/115)

NAME	PREPARED BY	CHECKED BY	APPROVED BY
SIGNATURE			
DATE			

SCALE	SHEET NO.	DRAWING NO.	REV. NO.
1: 10,000		23	-





Station	Accumulative Length	Ground Height	Proposal Height
NO.66+300	66+300.0	580.58	580.892
NO.66+400	66+400.0	580.33	581.026
NO.66+500	66+500.0	580.10	581.665
NO.66+600	66+600.0	579.85	582.311
NO.66+700	66+700.0	581.32	582.956
NO.66+800	66+800.0	582.59	583.601
NO.66+900	66+900.0	583.24	584.247
NO.67+000	67+000.0	584.26	584.892
NO.67+100	67+100.0	585.02	585.532
NO.67+200	67+200.0	585.13	585.408
NO.67+300	67+300.0	583.65	584.204
NO.67+400	67+400.0	581.17	582.890
NO.67+500	67+500.0	580.12	581.576
NO.67+600	67+600.0	579.43	580.262
NO.67+700	67+700.0	579.47	578.948
NO.67+800	67+800.0	578.11	577.634
NO.67+900	67+900.0	576.54	576.320
NO.68+000	68+000.0	575.39	575.006
NO.68+100	68+100.0	575.05	573.692
NO.68+200	68+200.0	573.92	572.378
NO.68+300	68+300.0	571.95	571.064
NO.68+400	68+400.0	570.19	569.750
NO.68+500	68+500.0	567.18	568.436
NO.68+600	68+600.0	564.98	567.122
NO.68+700	68+700.0	563.54	565.808
NO.68+800	68+800.0	562.94	564.494
NO.68+900	68+900.0	562.50	563.180
NO.69+000	69+000.0	562.15	561.866
NO.69+100	69+100.0	561.33	560.552
NO.69+200	69+200.0	560.74	559.238
NO.69+300	69+300.0	559.54	558.112
NO.69+400	69+400.0	557.73	557.444
NO.69+500	69+500.0	557.11	557.239
NO.69+600	69+600.0	556.44	557.485

 JAPAN INTERNATIONAL COOPERATION AGENCY
 NATIONAL ROAD ADMINISTRATION

REMARKS:

THE STUDY ON UPGRADING OF NAMPULA - CUAMBA ROAD

 ORIENTAL CONSULTANTS CO., LTD.
 JAPAN ENGINEERING CONSULTANTS CO., LTD.

DRAWING TITLE

Plan and Profile (23/115)

NAME	PREPARED BY	CHECKED BY	APPROVED BY
SIGNATURE			
DATE			

SCALE	SHEET NO.	DRAWING NO.	REV. NO.
1: 10,000		24	-