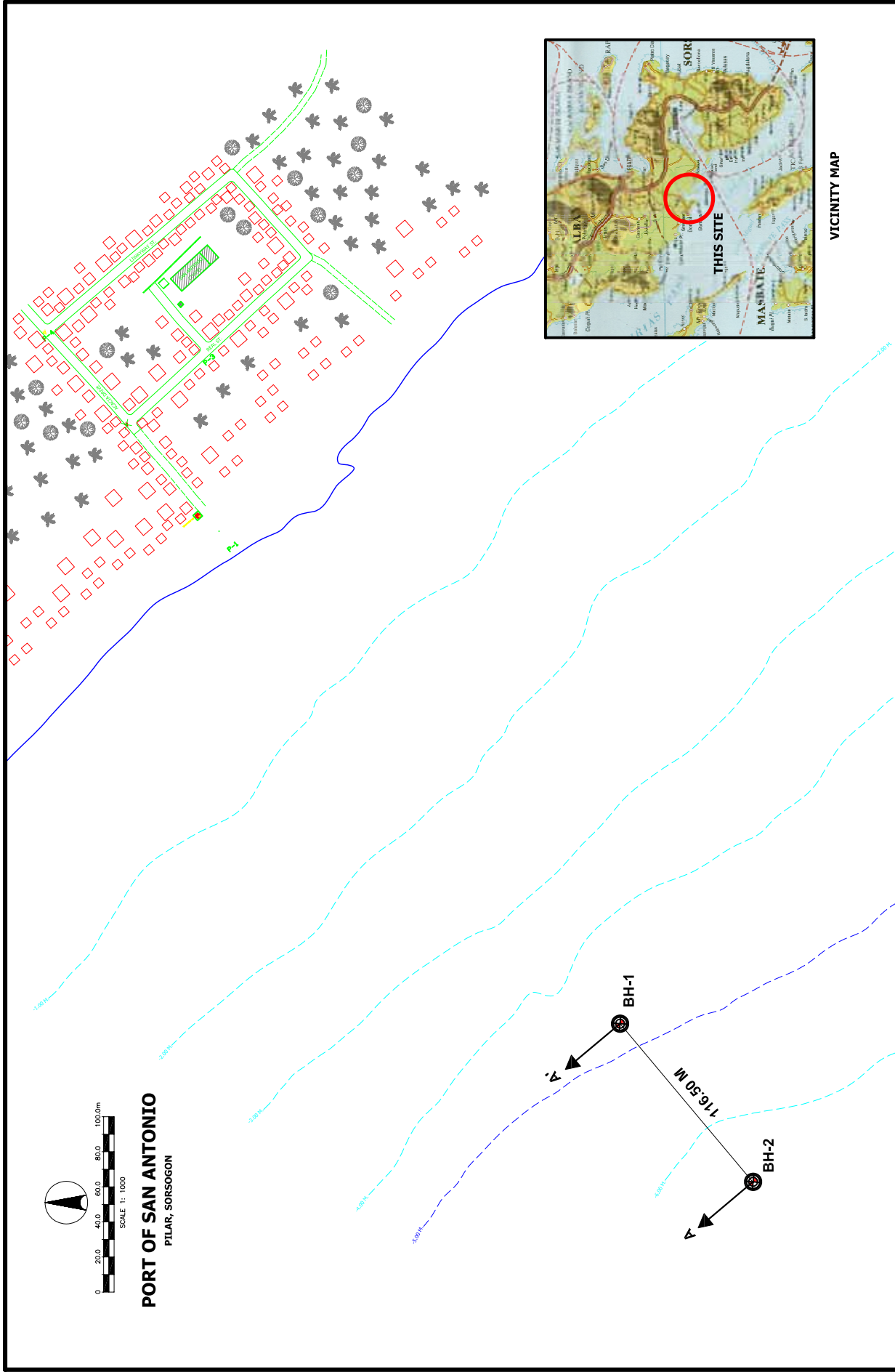


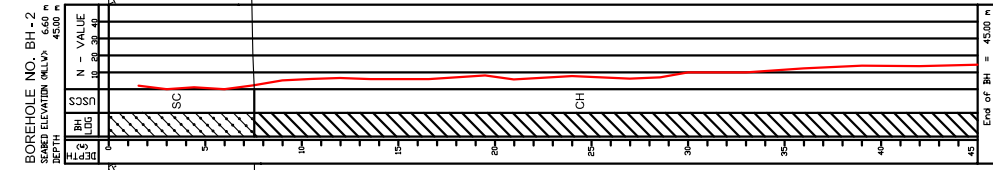
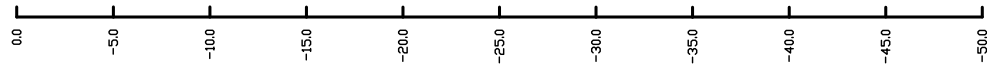
Soil Investigation Results



VICINITY MAP

The Overseas Coastal Area Dev't of Japan Pacific Consultants International (PCI)	CONTRACTOR Technotest incorporated	PROJECT NAME THE FEASIBILITY STUDY FOR THE DEVT. OF ROAD ROAD TERMINAL SYSTEM FOR MOBILITY ENHANCEMENT IN THE REPUBLIC OF THE PHILIPPINES	DRAWING TITLE FIGURE 2 BOREHOLE LOCATION PLAN SAN ANTONIO, PILAR, SORSOGON	PREPARED BY : DENNIS CALDERON	CHECKED BY : MANUEL T. VILLAFUERTE	APPROVED BY : JOSE LEOPOLDO P. FAJARDO	SHEET NO 1
---	---	--	---	----------------------------------	---------------------------------------	---	---------------

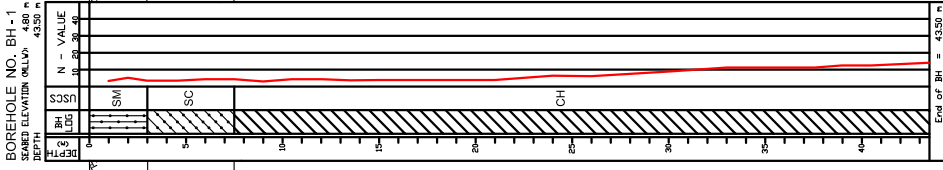
ELEV. IN METERS



BOREHOLE NO. BH-2
SEABED ELEVATION (MLLW) 45.00 m
DEPTH 45.00 m
N - VALUE

SC CH

End of BH = 45.00 m



BOREHOLE NO. BH-1
SEABED ELEVATION (MLLW) 43.30 m
DEPTH 43.30 m
N - VALUE

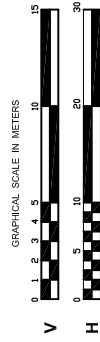
SC CH

End of BH = 43.30 m

Greenish gray Silty SAND

Dark gray, very soft Clayey SAND

Greenish gray to dark gray,
very soft to firm CLAY



	<p>JICA Study Team</p>	<p>CONTRACTOR</p>	<p>Technotest INCORPORATED</p>	<p>PROJECT NAME THE FEASIBILITY STUDY FOR THE DEVT. OF ROAD ROAD TERMINAL SYSTEM FOR MOBILITY ENHANCEMENT IN THE REPUBLIC OF THE PHILIPPINES</p>	<p>DRAWING TITLE FIGURE 3 SOIL PROFILE A - A' PORT OF SAN ANTONIO, PILAR, SORSOGON</p>	<p>PREPARED BY: DENNIS CALDERON</p>	<p>CHECKED BY: MANUEL T. VILLAFUERTE</p>	<p>APPROVED BY: JOSE LEOPOLDO P. FAJARDO</p>	<p>SHT. NO 1</p>
--	------------------------	-------------------	---	--	--	---	--	--	----------------------

FINAL BOREHOLE LOG AND SUMMARY OF TEST RESULTS

A - 1a

PROJECT: FSDRRTSMERP	Elev. (MLLW) -4.80	Depth of Water: 6.30 m
LOCATION: Port of San Antonio, Pilar, Sorsogon	Weather: F A I R	Date Measured: 13 Jun. 2007
BH NO.: BH-1	DATE DRILLED: Jun. 11 - 13, 2007	Time Measured: 5:00 AM
	Northing: 1424387.00	
	Easting: 569357.00	

DEPTH (m)	SAMPLE NO.	RECOVERY (%)	LOG SYMBOL	CLASSIFICATION	ROD	DESCRIPTION	BLOWS (SPT)			STANDARD PENETRATION TEST (SPT)				Natural Moisture Content, %	Specific Gravity	Atterberg Limits		UCT, q_p , kg/cm ²	CONSO. TEST		SIEVE ANALYSIS % PASSING			
							15 cm	15 cm	15 cm	N-VALUE						LL, %	PI, %		Compression Index, Cc	Precon. Press. P _c , kg/cm ²	4	10	40	200
1	SS-1	56	⊗	SM		Silty SAND; greenish gray; fine to very fine grained sand; considerable non-plastic fines; VERY LOOSE TO LOOSE.	2	2	1	10	20	30	40	29	2.61					100	97	90	40	
2	SS-2	56	⊗	SM		Silty SAND; greenish gray; fine to very fine grained sand; considerable non-plastic fines; VERY LOOSE.	2	3	2															
3	SS-3	44	⊗	SM			1	1	2															
4	SS-4	67	⊗	SC		Clayey SAND; dark gray; fine to very fine grained; traces of shell and coralline limestone fragments; moderate to low plasticity; VERY SOFT.	2	1	2					33	2.7					89	82	64	31	
5	SS-5	56	⊗	SC			2	1	2															
6	SS-6	56	⊗	SC			2	2	2															
7																								
8	SS-7	56	⊗	SC			3	2	2															
9	SS-8	44	⊗	CH		CLAY; greenish gray; with fine to very fine grained sand; traces of shell fragments; high plasticity; VERY SOFT.	2	2	1					45	2.6					96	95	88	56	



LEGEND:

- SS - Split Spoon Sample
- ⊗ WS - Wash Sample
- ▨ UDS - Undisturbed Sample
- ▤ CR - Core Sample

FINAL BOREHOLE LOG AND SUMMARY OF TEST RESULTS

A - 1d

PROJECT: FSDRRTSMERP	Elev. (MLLW) -4.80	Depth of Water: 6.30 m
LOCATION: Port of San Antonio, Pilar, Sorsogon	Weather: F A I R	Date Measured: 13 Jun. 2007
BH NO.: BH-1	DATE DRILLED: Jun. 11 - 13, 2007	Time Measured: 5:00 AM
	Northing: 1424387.00	
	Easting: 569357.00	

DEPTH (m)	SAMPLE NO.	RECOVERY (%)	LOG SYMBOL	CLASSIFICATION	ROD	DESCRIPTION	BLOWS (SPT)			STANDARD PENETRATION TEST (SPT)				Natural Moisture Content, %	Specific Gravity	Atterberg Limits		UCT, q_p , kg/cm ²	CONSO. TEST		SIEVE ANALYSIS % PASSING			
							15 cm	15 cm	15 cm	N-VALUE						LL, %	PI, %		Compression Index, Cc	Precon. Press. P _c , kg/cm ²	4	10	40	200
31	SS-23	89				CLAY; dark gray; traces of decayed wood fragments; high plasticity; FIRM.	5	5	5	10	20	30	40	74	2.56	82	52			100	99	99	97	
33	SS-24	84					5	5	6	10	20	30	40											
35	SS-25	89		CH			5	6	5	10	20	30	40											
36	SS-26	89					5	5	6	10	20	30	40	66	2.58	66	36							
37	SS-27	89					6	5	6	10	20	30	40											
39	SS-28	89					7	6	7	10	20	30	40	39	2.61	44	20							



LEGEND:

- SS - Split Spoon Sample
- UDS - Undisturbed Sample
- WS - Wash Sample
- CR - Core Sample

FINAL BOREHOLE LOG AND SUMMARY OF TEST RESULTS

A - 1e

PROJECT: FSDRRTSMERP	Elev. (MLLW) -4.80	Depth of Water: 6.30 m
LOCATION: Port of San Antonio, Pilar, Sorsogon	Weather: F A I R	Date Measured: 13 Jun. 2007
BH NO.: BH-1 DATE DRILLED: Jun. 11 - 13, 2007	Northing: 1424387.00	Time Measured: 5:00 AM
	Easting: 569357.00	

DEPTH (m)	SAMPLE NO.	RECOVERY (%)	LOG SYMBOL	CLASSIFICATION	ROD	DESCRIPTION	BLOWS (SPT)			STANDARD PENETRATION TEST (SPT)				Natural Moisture Content, %	Specific Gravity	Atterberg Limits		UCT, q _p , kg/cm ²	CONSO. TEST		SIEVE ANALYSIS % PASSING						
							15 cm	15 cm	15 cm	N-VALUE						LL, %	Pl, %		Compression Index, C _c	Precon. Press. P _c , kg/cm ²	4	10	40	200			
41	SS-29	78		CH		CLAY; brownish gray; traces of friable tuff fragments; high plasticity; FIRM.	6	6	6	10	20	30	40														
42	SS-30	78		CH			6	6	7																		
44	SS-31	67					END OF BORING 43.50 M	6	7	7																	

Technotest
 Technotest Center, 893 EDSA, Q.C.
 Tel. Nos.: 9242004/9242007 FAX: 9242156



MACHINE: CATHEAD/CONCOR
 DRILLER: D. DE LUNA
 SUPERVISOR: D. SINON

LEGEND:

- SS - Split Spoon Sample
- WS - Wash Sample
- UDS - Undisturbed Sample
- CR - Core Sample

FINAL BOREHOLE LOG AND SUMMARY OF TEST RESULTS

A - 2a

PROJECT: FSDRRTSMERP
 LOCATION: Port of San Antonio, Pilar, Sorsogon
 BH NO.: BH-2 DATE DRILLED: Jun. 14 - 15, 2007

Elev. (MLLW) -6.60
 Weather: F A I R
 Northing: 1424311.50
 Easting: 569266.80

Depth of Water: 7.50 m
 Date Measured: 15 Jun. 2007
 Time Measured: 1:00 PM

DEPTH (m)	SAMPLE NO.	RECOVERY (%)	LOG SYMBOL	CLASSIFICATION	ROD	DESCRIPTION	BLOWS (SPT)			STANDARD PENETRATION TEST (SPT)				Natural Moisture Content, %	Specific Gravity	Atterberg Limits		UCT, q_u , kg/cm ²	CONSO. TEST		SIEVE ANALYSIS % PASSING				
							15 cm	15 cm	15 cm	N-VALUE						LL, %	PI, %		Compression Index, Cc	Precon. Press. P _c , kg/cm ²	4	10	40	200	
1	SS-1	67		SC		Clayey SAND; dark gray; fine to very fine grained sand; moderate to low plasticity; VERY LOOSE	1	1	1	10	20	30	40	43	2.61	44	20			99	96	85	44		
3	SS-2						1	0	0																
4	SS-3	67					1	1	0																
6	SS-4	62					1	0	0																
7	SS-5	78					1	1	1	10	20	30	40	45	2.62										
9	SS-6	78		CH		CLAY; dark gray; traces of shell fragments; high plasticity; SOFT.	2	2	3					63	2.59					91	89	89	87		



LEGEND:

- SS - Split Spoon Sample
- UDS - Undisturbed Sample
- WS - Wash Sample
- CR - Core Sample

FINAL BOREHOLE LOG AND SUMMARY OF TEST RESULTS

A - 2b

PROJECT: FSDRRTSMERP
 LOCATION: Port of San Antonio, Pilar, Sorsogon
 BH NO.: BH-2 DATE DRILLED: Jun. 14 - 15, 2007

Elev. (MLLW) -6.60
 Weather: F A I R
 Northing: 1424311.50
 Easting: 569266.80

Depth of Water: 7.50 m
 Date Measured: 15 Jun. 2007
 Time Measured: 1:00 PM

DEPTH (m)	SAMPLE NO.	RECOVERY (%)	LOG SYMBOL	CLASSIFICATION	ROD	DESCRIPTION	BLOWS (SPT)			STANDARD PENETRATION TEST (SPT)				Natural Moisture Content, %	Specific Gravity	Atterberg Limits		UCT, q_p , kg/cm ²	CONSO. TEST		SIEVE ANALYSIS % PASSING																													
							15 cm	15 cm	15 cm	N-VALUE						LL, %	Pl, %		Compression Index, C _c	Precon. Press. P _c , kg/cm ²	4	10	40	200																										
										10	20	30	40																																					
11	SS-7	67					3	3	3	3																																								
12	SS-8	67					3	4	3	3																																								
13	SS-9	67					4	3	3	3																																								
15	SS-10	78			CH	CLAY; greenish gray; traces of shell fragments; high plasticity; SOFT.	3	3	3	3	70	2.50						100	99	98	83																													
16	SS-11	78					3	3	3	3																																								
18	SS-12	67					3	4	3	3																																								
19	SS-13	78					3	4	4	3	80	2.51																																						

Technotest
 Incorporated
 Technotest Center, 893 EDSA, Q.C.
 Tel. Nos.: 9242004/9242007 FAX: 9242156



MACHINE: CATHEAD/CONCOR
 DRILLER: D. DE LUNA
 SUPERVISOR: D. SINON

LEGEND:
 ■ SS - Split Spoon Sample ⊗ WS - Wash Sample
 ◼ UDS - Undisturbed Sample ▨ CR - Core Sample

FINAL BOREHOLE LOG AND SUMMARY OF TEST RESULTS

A - 2c

PROJECT: <u>FSDRRTSMERP</u>			Elev. (MLLW) <u>-6.60</u>	Depth of Water: <u>7.50 m</u>
LOCATION: <u>Port of San Antonio, Pilar, Sorsogon</u>			Weather: <u>F A I R</u>	Date Measured: <u>15 Jun. 2007</u>
BH NO.: <u>BH-2</u>		DATE DRILLED: <u>Jun. 14 - 15, 2007</u>	Northing: <u>1424311.50</u>	Time Measured: <u>1:00 PM</u>
			Easting: <u>569266.80</u>	

DEPTH (m)	SAMPLE NO.	RECOVERY (%)	LOG SYMBOL	CLASSIFICATION	ROD	DESCRIPTION	BLOWS (SPT)			STANDARD PENETRATION TEST (SPT)				Natural Moisture Content, %	Specific Gravity	Atterberg Limits		UCT, q_p , kg/cm ²	CONSO. TEST		SIEVE ANALYSIS % PASSING					
							15 cm	15 cm	15 cm	N-VALUE						LL, %	PI, %		Compression Index, Cc	Precon. Pres. P _c , kg/cm ²	4	10	40	200		
21	SS-14	67	☐				4	3	3	•																
22																										
23	SS-15	78	☐				4	3	4	•	67	2.5	78	53							100	99	94			
24	SS-16	67	☐				3	4	4	•																
25				CH		CLAY; greenish gray; high plasticity; SOFT.																				
26	SS-17	67	☐				3	4	3	•																
27	SS-18	78	☐				4	3	3	•	68	2.5	76	43												
28																										
29	SS-19	78	☐				4	3	4	•																
30	SS-20	82	☐			CLAY; greenish gray; high plasticity; FIRM.	4	5	5	•	83	2.50	90	59												

Technotest
Technotest Center, 893 EDSA, Q.C.
 Tel. Nos.: 9242004/9242007 FAX: 9242156



MACHINE: CATHEAD/CONCOR
 DRILLER: D. DE LUNA
 SUPERVISOR: D. SINON

- LEGEND:
- SS - Split Spoon Sample
 - UDS - Undisturbed Sample
 - WS - Wash Sample
 - CR - Core Sample

FINAL BOREHOLE LOG AND SUMMARY OF TEST RESULTS

A - 2d

PROJECT: FSDRRTSMERP	Elev. (MLLW) -6.60	Depth of Water: 7.50 m
LOCATION: Port of San Antonio, Pilar, Sorsogon	Weather: FAIR	Date Measured: 15 Jun. 2007
BH NO.: BH-2	DATE DRILLED: Jun. 14 - 15, 2007	Time Measured: 1:00 PM
	Northing: 1424311.50	
	Easting: 569266.80	

DEPTH (m)	SAMPLE NO.	RECOVERY (%) SAMPLE	LOG SYMBOL	CLASSIFICATION	ROD	DESCRIPTION	BLOWS (SPT)			STANDARD PENETRATION TEST (SPT) N-VALUE 10 20 30 40	Natural Moisture Content, %	Specific Gravity	Atterberg Limits		UCT, q_u , kg/cm ²	CONSO. TEST Compression Index, C _c	Precon. Press. P _c , kg/cm ²	SIEVE ANALYSIS % PASSING			
							15 cm	15 cm	15 cm				LL, %	Pl, %				4	10	40	200
31	SS-21	67					5	5	5												
32																					
33	SS-22	67					6	5	6												
34																					
35				CH		CLAY; greenish gray; high plasticity; FIRM.															
36	SS-23	67					6	6	6												
37																					
38																					
39	SS-24	67					6	7	7												



LEGEND:

- SS - Split Spoon Sample
- WS - Wash Sample
- UDS - Undisturbed Sample
- CR - Core Sample

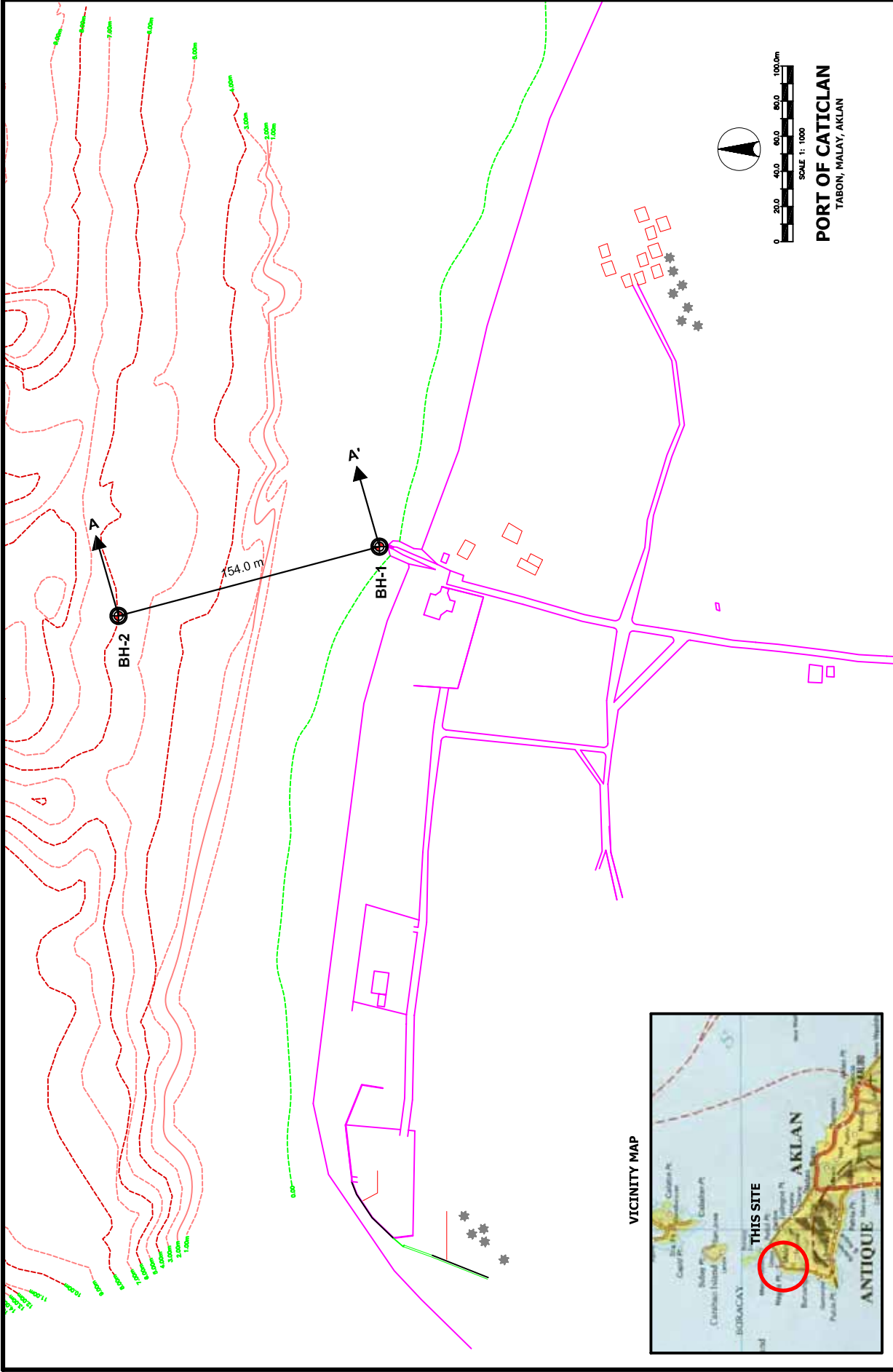
FINAL BOREHOLE LOG AND SUMMARY OF TEST RESULTS

A - 2e

PROJECT: FSDRRTSMERP	Elev. (MLLW): -6.60	Depth of Water: 7.50 m
LOCATION: Port of San Antonio, Pilar, Sorsogon	Weather: F A I R	Date Measured: 15 Jun. 2007
BH NO.: BH-2	DATE DRILLED: Jun. 14 - 15, 2007	Time Measured: 1:00 PM
	Northing: 1424311.50	
	Easting: 569266.80	

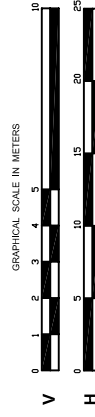
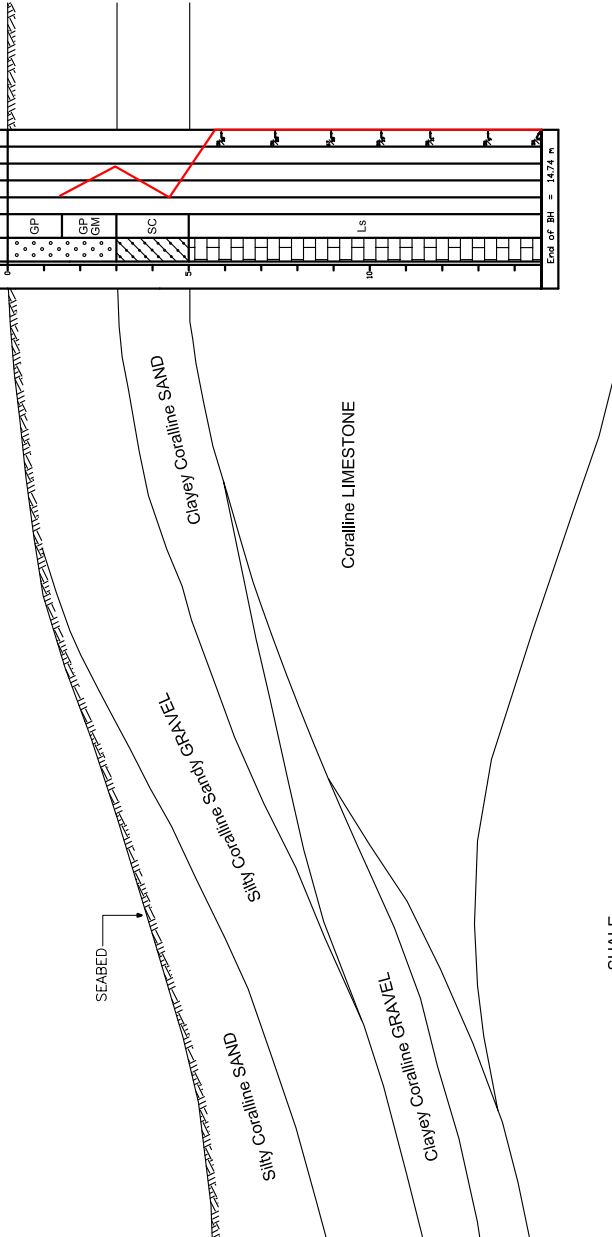
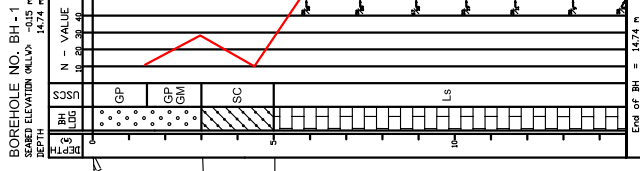
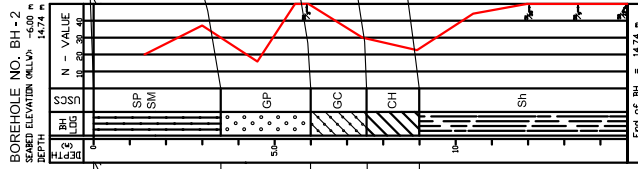
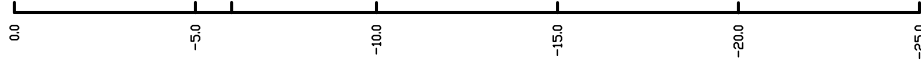
DEPTH (m)	SAMPLE NO.	RECOVERY (%) SAMPLE	LOG SYMBOL	CLASSIFICATION	ROD	DESCRIPTION	BLOWS (SPT)			STANDARD PENETRATION TEST (SPT)				Natural Moisture Content, %	Specific Gravity	Atterberg Limits		UCT, q_u , kg/cm ²	CONSO. TEST		SIEVE ANALYSIS % PASSING				
							15 cm	15 cm	15 cm	N-VALUE						LL, %	PI, %		Compression Index, C _c	Precon. Pres., P _c , kg/cm ²	4	10	40	200	
41						CLAY; brownish gray; traces of friable tuff fragments; high plasticity; FIRM.																			
42	SS-25	62			CH			7	6	7	10	20	30	40											
43																									
44																									
45	SS-26	67				END OF BORING 45.00 M		6	7	7	74		2.6							99	99	97	93		
46																									
47																									
48																									
49																									





	The Overseas Coastal Area Dev't of Japan Pacific Consultants International (PCI)	JICA Study Team Technotest incorporated	PROJECT NAME THE FEASIBILITY STUDY FOR THE DEVT. OF ROAD ROAD TERMINAL SYSTEM FOR MOBILITY ENHANCEMENT IN THE REPUBLIC OF THE PHILIPPINES	DRAWING TITLE FIGURE 2 BOREHOLE LOCATION PLAN PORT OF CATICLAN, TABON, MALAY, AKLAN	PREPARED BY: DENNIS CALDERON	CHECKED BY: MANUEL T. VILLAFUERTE	APPROVED BY: JOSE LEOPOLDO P. FAJARDO	SHEET NO 1
--	---	--	--	--	---------------------------------	--------------------------------------	--	---------------

ELEV. IN METERS



The Overseas Coastal Area Dev't of Japan
 Pacific Consultants International (PCI)

Technotest
 incorporated

CONTRACTOR

PROJECT NAME
 THE FEASIBILITY STUDY FOR THE DEVT.
 OF ROAD ROAD TERMINAL SYSTEM FOR
 MOBILITY ENHANCEMENT IN THE
 REPUBLIC OF THE PHILIPPINES

DRAWING TITLE
 FIGURE 3
 SOIL PROFILE A - A'
 PORT OF CATICLAN, MALAY, Aklan

PREPARED BY:
 DENNIS CALDERON

CHECKED BY:
 MANUEL T. VILLAFUERTE

APPROVED BY:
 JOSE LEOPOLDO P. FAJARDO

FINAL BOREHOLE LOG AND SUMMARY OF TEST RESULTS

A - 1a

PROJECT: FSDRRTSMERP	Elev. (MLLW) -0.15	Depth of Water: 1.80 m
LOCATION: Port of Caticlan, Caticlan, Aklan	Weather: F A I R	Date Measured: 5 Jun. 2007
BH NO.: BH-1	DATE DRILLED: Jun. 4 - 5, 2007	Time Measured: 12:15 PM
	Northing: 1320535.50	
	Easting: 385960.40	

DEPTH (m)	SAMPLE NO.	RECOVERY (%)	LOG SYMBOL	CLASSIFICATION	ROD	DESCRIPTION	BLOWS (SPT)			STANDARD PENETRATION TEST (SPT)				Natural Moisture Content, %	Specific Gravity	Atterberg Limits		UCT, q_u , kg/cm ²	CONSO. TEST		SIEVE ANALYSIS % PASSING			
							15 cm	15 cm	15 cm	N-VALUE						LL, %	PI, %		Compress. Index, Cc	Precon. Press. P _c , kg/cm ²	4	10	40	200
1				GP		Silty Coralline Sandy GRAVEL; gray; coralline limestone fragments of sand to gravel size; negligible fines MEIDUM DENSE.	4	6	5	10	20	30	40	27										
	SS-1	4																						
2				GP		Clayey SAND; orange brown; consist of coralline particles and fragments; considerable moderately plastic fines; LOOSE	13	15	13	10	20	30	40	29	2.66					42	34	17	7	
	SS-2	67																						
3				SC		Clayey SAND; orange brown; consist of coralline particles and fragments; considerable moderately plastic fines; LOOSE	1	2	8	10	20	30	40	25	2.66	34	11			82	69	49	33	
	SS-3	60																						
4						Coralline LIMESTONE; dark brown to yellowish brown ; fine to coarse-grained; marly; highly weathered; poor to moderate cemented; weak in terms of rock strength.	30	45	5/3	10	20	30	40	20	2.66	27	9			90	83	66	39	
	SS-4	97																						
5						Coralline LIMESTONE; dark brown to yellowish brown ; fine to coarse-grained; marly; highly weathered; poor to moderate cemented; weak in terms of rock strength.	17	48	15/5	10	20	30	40	25	2.65									
	SS-5	71																						
6						Coralline LIMESTONE; dark brown to yellowish brown ; fine to coarse-grained; marly; highly weathered; poor to moderate cemented; weak in terms of rock strength.	14	22	45/3	10	20	30	40	15	2.66									
	SS-6	42																						
7				LMS																				
8																								
9																								

Technotest
Incorporated
Technotest Center, 893 EDSA, Q.C.
Tel. Nos.: 9242004/9242007 FAX: 9242156



MACHINE: TONE
DRILLER: E. LABRAMONTE
SUPERVISOR: D. CONTawe

LEGEND:

- SS - Split Spoon Sample
- WS - Wash Sample
- UDS - Undisturbed Sample
- CR - Core Sample

FINAL BOREHOLE LOG AND SUMMARY OF TEST RESULTS

A - 1b

PROJECT: FSDRRTSMERP	Elev. (MLLW) -0.15	Depth of Water: 1.80 m
LOCATION: Port of Caticlan, Caticlan, Aklan	Weather: F A I R	Date Measured: 5 Jun. 2007
BH NO.: BH-1	DATE DRILLED: Jun. 4 - 5, 2007	Time Measured: 12:15 PM
	Northing: 1320535.50	
	Easting: 385960.40	

DEPTH (m)	SAMPLE NO.	RECOVERY (%) SAMPLE	LOG SYMBOL	CLASSIFICATION	ROD	DESCRIPTION	BLOWS (SPT)			STANDARD PENETRATION TEST (SPT)				Natural Moisture Content, %	Specific Gravity	Atterberg Limits		UCT, q_u , kg/cm ²	CONSO. TEST			SIEVE ANALYSIS % PASSING			
							15 cm	15 cm	15 cm	N-VALUE						LL, %	Pl, %		Compression Index, Cc	Precon. Press. P _c , kg/cm ²	4	10	40	200	
										10	20	30	40												
11	SS-7	82		LMS		Coralline LIMESTONE; yellowish brown ; fine to coarse-grained; marly; highly weathered; poor cemented; weak in terms of rock strength.	27	37	16/4	53/9	12	2.66	28	10					84	69	46	27			
12	SS-8	73					50/11			50/11	14	2.66													
13	SS-9	78					50/9			50/9	17	2.65													
14	SS-10						50/2			50/2															
						END OF BORING 14.07 M																			



LEGEND:

- SS - Split Spoon Sample
- UDS - Undisturbed Sample
- WS - Wash Sample
- CR - Core Sample

FINAL BOREHOLE LOG AND SUMMARY OF TEST RESULTS

A - 2a

PROJECT: FSDRRTSMERP
 LOCATION: Port of Caticlan, Caticlan, Aklan
 BH NO.: BH-2 DATE DRILLED: Jun. 6 - 7, 2007

Elev. (MLLW) -6.00
 Weather: F A I R
 Northing: 1219964.60
 Easting: 519976.00

Depth of Water: 7.20 m
 Date Measured: 7 Jun. 2007
 Time Measured: 12:00 PM

DEPTH (m)	SAMPLE NO.	RECOVERY (%)	LOG SYMBOL	CLASSIFICATION	ROD	DESCRIPTION	BLOWS (SPT)			STANDARD PENETRATION TEST (SPT)				Natural Moisture Content, %	Specific Gravity	Atterberg Limits		UCT, q_u , kg/cm ²	CONSO. TEST		SIEVE ANALYSIS % PASSING				
							15 cm	15 cm	15 cm	N-VALUE						LL, %	PI, %		Compression Index, Cc	Precon. Press. P _c , kg/cm ²	4	10	40	200	
1	SS-1	87	[Symbol]	SP SM		Coralline Gravelly SAND; light gray; consists of sand to gravel-size coralline limestone fragments; little non-plastic fines; MEDIUM DENSE.	5	8	12	10	20	30	40	21	2.67										
3	SS-2	93	[Symbol]	SP SM			11	16	19	10	20	30	40	14	2.66						55	48	29	10	
5	SS-3	78	[Symbol]	GP		Coralline GRAVEL; yellowish white; fragments of corals and limestone; little sand; negligible plastic fines; VERY DENSE.	4	6	8	10	20	30	40	10	2.66										
6	SS-4	100	[Symbol]	GP			50/3			50/3				23	2.65					20	11	3	2		
6	CR-1	100	[Symbol]	GC	100	Clayey Coralline Sandy GRAVEL; yellowish brown; coralline limestone fragments with appreciable plastic fines; MEDIUM DENSE to DENSE.	CORING																		
7			[Symbol]	GC																					
8	SS-5	78	[Symbol]	CH		CLAY; yellowish brown; considerable fine sand; high plasticity; STIFF.	20	15	15	14	20	30	40	14	2.61	28	11			58	44	29	21		
9	SS-6	84	[Symbol]	Sh		SHALE; yellowish brown; fine grained; thickly-bedded; highly weathered; poorly cemented; weak in terms of rock strength.	8	10	12	21	20	30	40	21	2.65	54	27			100	99	90	56		



LEGEND:

- [Symbol] SS - Split Spoon Sample
- [Symbol] UDS - Undisturbed Sample
- [Symbol] WS - Wash Sample
- [Symbol] CR - Core Sample

FINAL BOREHOLE LOG AND SUMMARY OF TEST RESULTS

A - 2b

PROJECT: FSDRRTSMERP
LOCATION: Port of Caticlan, Caticlan, Aklan
BH NO.: BH-2 **DATE DRILLED:** Jun. 6 - 7, 2007

Elev. (MLLW) -6.00
 Weather: F A I R
 Northing: 1219964.60
 Easting: 519976.00

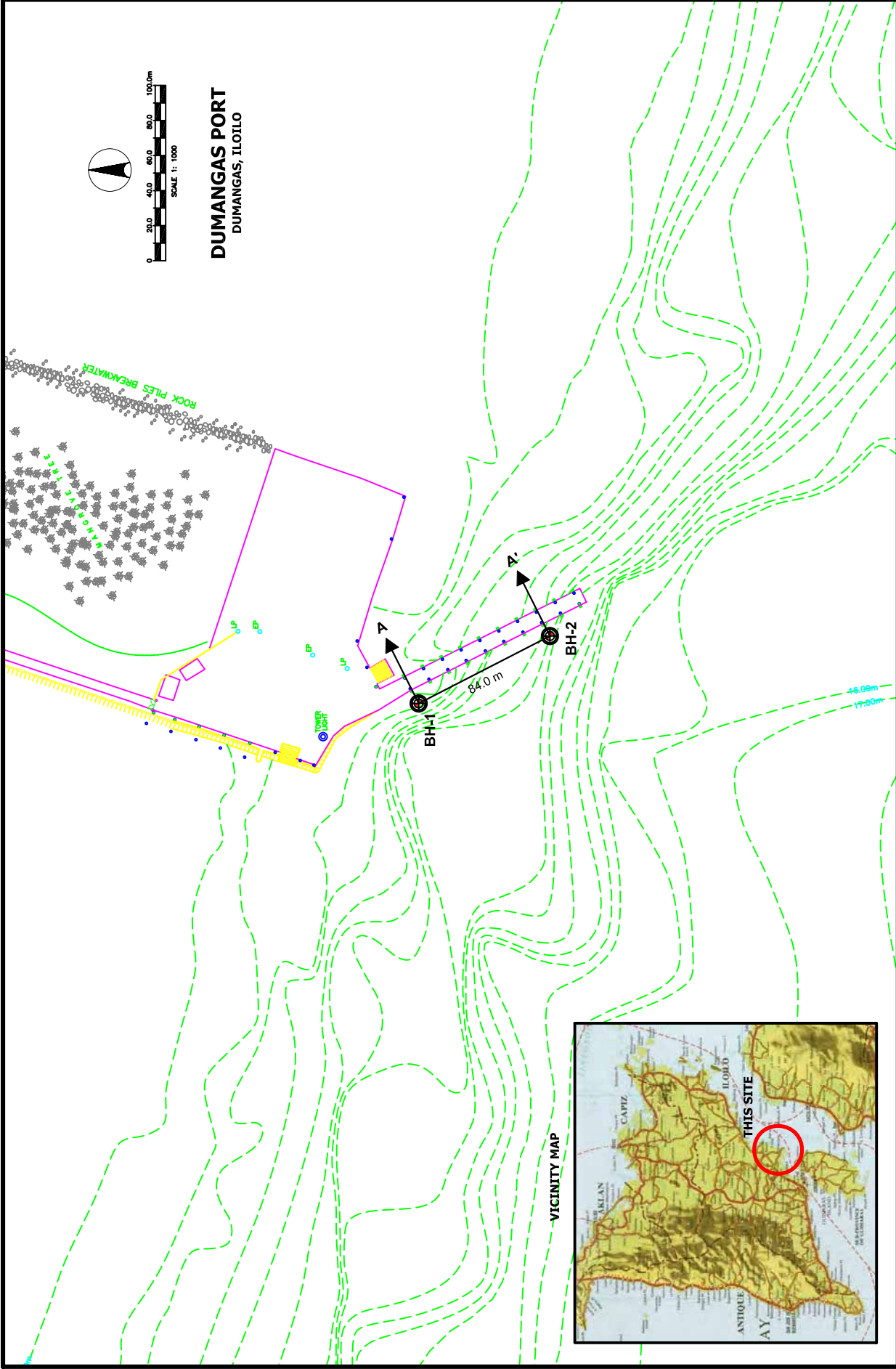
Depth of Water: 7.20 m
 Date Measured: 7 Jun. 2007
 Time Measured: 12:00 PM

DEPTH (m)	SAMPLE NO.	RECOVERY (%)	LOG SYMBOL	CLASSIFICATION	ROD	DESCRIPTION	BLOWS (SPT)			STANDARD PENETRATION TEST (SPT)				Natural Moisture Content, %	Specific Gravity	Atterberg Limits		UCT, q _p , kg/cm ²	CONSO. TEST		SIEVE ANALYSIS % PASSING			
							15 cm	15 cm	15 cm	N-VALUE						LL, %	Pl, %		Compression Index, C _c	Precon. Press. P _c , kg/cm ²	4	10	40	200
11.0	SS-7	100					13	18	26	61	30	20	2.60	71	44			99	97	83	53			
12.0	SS-8	67		Sh		SHALE; yellowish brown; fine grained; thickly-bedded; highly weathered; poorly cemented; weak in terms of rock strength.	24	28	23	61	30	21	2.61	69	41			99	98	90	61			
13.0	SS-9	62					41	50	9	50	9	14	2.61											
14.0	SS-10	100				END OF BORING 14.74 M	50	50	4	50	19	18	2.62											



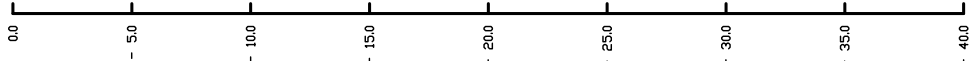
LEGEND:

- SS - Split Spoon Sample
- UDS - Undisturbed Sample
- WS - Wash Sample
- CR - Core Sample



	The Overseas Coastal Area Dev't of Japan Pacific Consultants International (PCI)	JICA Study Team		CONTRACTOR	PROJECT NAME THE FEASIBILITY STUDY FOR THE DEVT. OF ROAD ROAD TERMINAL SYSTEM FOR MOBILITY ENHANCEMENT IN THE REPUBLIC OF THE PHILIPPINES	DRAWING TITLE FIGURE 2 BOREHOLE LOCATION PLAN PORT OF DUMANGAS, DUMANGAS, ILOILO	PREPARED BY: DENNIS CALDERON	CHECKED BY: MANUEL T. VILLAFUERTE	APPROVED BY: JOSE LEOPOLDO P. FAJARDO	SHEET NO 1
--	---	-----------------	--	------------	--	---	---------------------------------	--------------------------------------	--	---------------

ELEV. IN METERS



BOREHOLE NO. BH-1

SEABED ELEVATION (MLVD) = -7.96 m

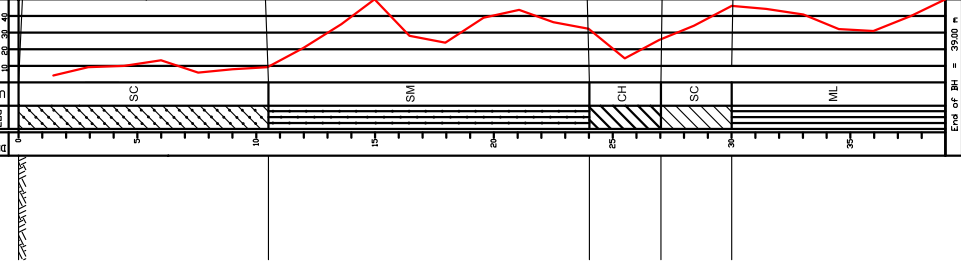
DEPTH

N - VALUE

LOG

SCS

End of BH = 39.0 m



BOREHOLE NO. BH-2

SEABED ELEVATION (MLVD) = -7.96 m

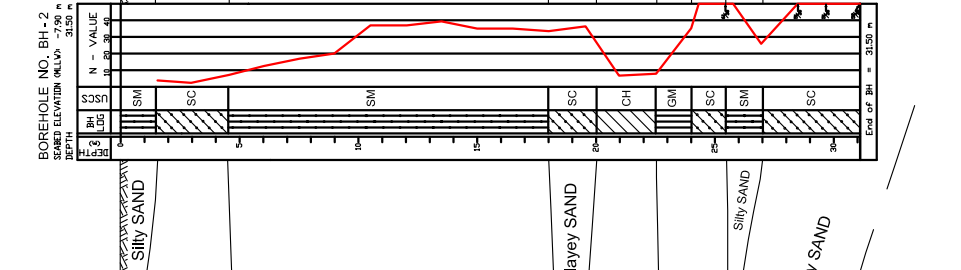
DEPTH

N - VALUE

LOG

SCS

End of BH = 31.50 m



SEABED

Loose Clayey SAND

Medium dense to dense
Silty very fine to fine SAND

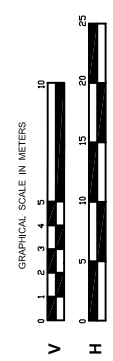
Medium stiff to stiff CLAY

Dense to very dense
Clayey SAND

Silty SAND

Dense Sandy SILT

Very dense Clayey SAND



JICA Study Team

The Overseas Coastal Area Dev't of Japan

Pacific Consultants International (PCI)

Technote
incorporated

THE FEASIBILITY STUDY FOR THE DEVT.
OF ROAD RO-RO TERMINAL SYSTEM FOR
MOBILITY ENHANCEMENT IN THE
REPUBLIC OF THE PHILIPPINES

FIGURE 3
SOIL PROFILE A-A'
PORT OF DUMANGAS, DUMANGAS, ILOILO

PREPARED BY:
DENNIS CALDERON

CHECKED BY:
MANUEL T. VILLAFUERTE

APPROVED BY:
JOSE LEOPOLDO P. FAJARDO

SHEET NO.
2

FINAL BOREHOLE LOG AND SUMMARY OF TEST RESULTS

A - 1a

PROJECT: FSDRRTSMERP	Elev. (MLLW) -3.60	Depth of Water: 4.56 m
LOCATION: Port of Dumangas, Dumangas, Iloilo	Weather: F A I R	Date Measured: 22 Jun. 2007
BH NO.: BH-1	DATE DRILLED: Jun. 21 - 22 2007	Time Measured: 2:00 PM
	Northing: 1191627.00	
	Easting: 467885.80	

DEPTH (m)	SAMPLE NO.	RECOVERY (%)	LOG SYMBOL	CLASSIFICATION	ROD	DESCRIPTION	BLOWS (SPT)			STANDARD PENETRATION TEST (SPT)				Natural Moisture Content, %	Specific Gravity	Atterberg Limits		UCT, q_u , kg/cm ²	CONSO. TEST		SIEVE ANALYSIS % PASSING			
							15 cm	15 cm	15 cm	N-VALUE						LL, %	PI, %		Compression Index, Cc	Precon. Press. P _c , kg/cm ²	4	10	40	200
1	SS-1	100	[Symbol]	SC		Clayey SAND; greenish gray; fine to very fine grained sand; moderate to low plasticity; VERY LOOSE TO LOOSE.	1	2	2	10	20	30	40	48	2.67	33	13				100	95	45	
3	SS-2	78	[Symbol]				2	3	6															
4	SS-3	71	[Symbol]					4	5	5														
6	SS-4	78	[Symbol]					7	7	6				22	2.66									
7	SS-5	67	[Symbol]				Clayey SAND; greenish gray; fine to very fine grained sand; moderate to low plasticity; LOOSE.	3	3	3														
9	SS-6	82	[Symbol]					3	4	4					38	2.66	32	12				100	100	99



LEGEND:

- [Symbol] SS - Split Spoon Sample
- [Symbol] WS - Wash Sample
- [Symbol] UDS - Undisturbed Sample
- [Symbol] CR - Core Sample

FINAL BOREHOLE LOG AND SUMMARY OF TEST RESULTS

A - 1b

PROJECT: FSDRRTSMERP
 LOCATION: Port of Dumangas, Dumangas, Iloilo
 BH NO.: BH-1 DATE DRILLED: Jun. 21 - 22 2007

Elev. (MLLW) -3.60
 Weather: F A I R
 Northing: 1191627.00
 Easting: 467885.80

Depth of Water: 4.56 m
 Date Measured: 22 Jun. 2007
 Time Measured: 2:00 PM

DEPTH (m)	SAMPLE NO.	RECOVERY (%)	LOG SYMBOL	CLASSIFICATION	ROD	DESCRIPTION	BLOWS (SPT)			STANDARD PENETRATION TEST (SPT)				Natural Moisture Content, %	Specific Gravity	Atterberg Limits		UCT, q_u , kg/cm ²	CONSO. TEST		SIEVE ANALYSIS % PASSING																				
							15 cm	15 cm	15 cm	N-VALUE						LL, %	Pl, %		Compression Index, Cc	Precon. Press. P _c , kg/cm ²	4	10	40	200																	
11.0	SS-7	62	[Symbol]	SC		Clayey SAND; greenish gray; fine to very fine grained sand; moderate plasticity; LOOSE.	4	4	5	10	20	30	40																												
12.0	SS-8	84	[Symbol]			Silty SAND; greenish gray; fine to very fine grained sand; appreciable non-plastic fines; MEDIUM DENSE TO VERY DENSE.	8	7	14	28				2.60							100	100	99	16																	
13.5	SS-9	53	[Symbol]					10	17	18																															
15.0	SS-10	62	[Symbol]	SM				15	23	27	26				2.62																										
16.5	SS-11	33	[Symbol]			Silty SAND; greenish gray; fine to very fine grained sand; appreciable non-plastic fines; MEDIUM DENSE TO DENSE.	10	15	13																																
18.0	SS-12	62	[Symbol]					8	10	14																															
19.0	SS-13	80	[Symbol]				13	19	20																																



FINAL BOREHOLE LOG AND SUMMARY OF TEST RESULTS

A - 1d

PROJECT: FSDRRTSMERP	Elev. (MLLW) -3.60	Depth of Water: 4.56 m
LOCATION: Port of Dumangas, Dumangas, Iloilo	Weather: F A I R	Date Measured: 22 Jun. 2007
BH NO.: BH-1	DATE DRILLED: Jun. 21 - 22 2007	Time Measured: 2:00 PM
	Northing: 1191627.00	
	Easting: 467885.80	

DEPTH (m)	SAMPLE NO.	RECOVERY (%)	LOG SYMBOL	CLASSIFICATION	ROD	DESCRIPTION	BLOWS (SPT)			STANDARD PENETRATION TEST (SPT)				Natural Moisture Content, %	Specific Gravity	Atterberg Limits		UCT, q_u , kg/cm ²	CONSO. TEST		SIEVE ANALYSIS % PASSING				
							15 cm	15 cm	15 cm	N-VALUE						LL, %	Pl, %		Compression Index, Cc	Precon. Press. P _c , kg/cm ²	4	10	40	200	
31	SS-21	84	[Symbol]			<p>Clayey SILT; greenish gray; with fine to very fine grained sand; low plasticity; HARD.</p>	19	20	23	10	20	30	40	50	2.65	39	10				98	98	98	58	
33	SS-22	44	[Symbol]				17	19	22																
35	SS-23	56	[Symbol]	ML			15	16	16																
36	SS-24	16	[Symbol]				<p>Sandy SILT; greenish gray; considerable amount of fine to very fine grained sand; slight to non-plastic fines; HARD.</p>	16	15	16															
37	SS-25	33	[Symbol]					18	20	20					52	2.59						100	100	100	64
39	SS-26	29	[Symbol]			END OF BORING 39.00 M	19	21	20																



LEGEND:

- [Symbol] SS - Split Spoon Sample
- [Symbol] WS - Wash Sample
- [Symbol] UDS - Undisturbed Sample
- [Symbol] CR - Core Sample

FINAL BOREHOLE LOG AND SUMMARY OF TEST RESULTS

A - 2a

PROJECT: FSDRRTSMERP	Elev. (MLLW) -7.90	Depth of Water: 8.50 m
LOCATION: Port of Dumangas, Dumangas, Iloilo	Weather: F A I R	Date Measured: 20 Jun. 2007
BH NO.: BH-2	DATE DRILLED: Jun. 19 - 20, 2007	Time Measured: 5:00 PM
	Northing: 1190552.00	
	Easting: 467924.00	

DEPTH (m)	SAMPLE NO.	RECOVERY (%)	LOG SYMBOL	CLASSIFICATION	ROD	DESCRIPTION	BLOWS (SPT)			STANDARD PENETRATION TEST (SPT)				Natural Moisture Content, %	Specific Gravity	Atterberg Limits		UCT, q_u , kg/cm ²	CONSO. TEST		SIEVE ANALYSIS % PASSING			
							15 cm	15 cm	15 cm	N-VALUE						LL, %	PI, %		Compression Index, Cc	Precon. Press. P _c , kg/cm ²	4	10	40	200
1				SM		Silty SAND; greenish gray; fine to medium grained sand; traces of shell fragments; slight to none plastic fines; VERY LOOSE.																		
1.5	SS-1	100					1	2	1	1	23	2.59									97	92	74	21
2.5				SC		Clayey SAND; light gray to gray; fine to very fine grained sand; moderate plasticity; VERY LOOSE TO LOOSE.																		
3	SS-2	93					1	1	1	1	20	2.57	38	15							100	100	100	68
4.5																								
4.5	SS-3	84					2	3	4	4														
6	SS-4	87					4	5	7	7	34	2.59												
7.5				SM		Silty SAND; gray to greenish gray; fine to very fine grained sand; moderate to low plasticity; MEDIUM DENSE.																		
7.5	SS-5	80					8	8	9	9														
9	SS-6	100					6	10	10	10	33	2.58									100	99	92	24

Technotest
 Incorporated
 Technotest Center, 893 EDSA, Q.C.
 Tel. Nos.: 9242004/9242007 FAX: 9242156



MACHINE: TONE
 DRILLER: E. LABRAMONTE
 SUPERVISOR: D. CONTAWA

LEGEND:
 SS - Split Spoon Sample
 WS - Wash Sample
 UDS - Undisturbed Sample
 CR - Core Sample

FINAL BOREHOLE LOG AND SUMMARY OF TEST RESULTS

A - 2b

PROJECT: FSDRRTSMERP	Elev. (MLLW) -7.90	Depth of Water: 8.50 m
LOCATION: Port of Dumangas, Dumangas, Iloilo	Weather: F A I R	Date Measured: 20 Jun. 2007
BH NO.: BH-2	DATE DRILLED: Jun. 19 - 20, 2007	Time Measured: 5:00 PM
	Northing: 1190552.00	
	Easting: 467924.00	

DEPTH (m)	SAMPLE NO.	RECOVERY (%)	LOG SYMBOL	CLASSIFICATION	ROD	DESCRIPTION	BLOWS (SPT)			STANDARD PENETRATION TEST (SPT)				Natural Moisture Content, %	Specific Gravity	Atterberg Limits		UCT, q _p , kg/cm ²	CONSO. TEST	SIEVE ANALYSIS % PASSING								
							15 cm	15 cm	15 cm	N-VALUE						LL, %	PI, %			Compression Index, C _c	Precon. Press. P _c , kg/cm ²	4	10	40	200			
10.5	SS-7	84	[Symbol]	SM		Silty SAND; greenish gray; fine to medium sand; none plastic fines; DENSE.	10	13	24	10	20	30	40															
12.0	SS-8	84	[Symbol]	SM																								
13.5	SS-9	89	[Symbol]	SM		Silty SAND; greenish gray; fine to very fine grained sand; appreciable non-plastic fines; DENSE.	9	17	22	9	20	30	40	31	2.58													
15.0	SS-10	49	[Symbol]	SM																								
16.5	SS-11	56	[Symbol]	SM																								
18.0	SS-12	49	[Symbol]	SM																								
19.0	SS-13	84	[Symbol]	SC		Clayey SAND; greenish gray; fine to very fine grained sand; moderate plasticity; DENSE.	11	15	22	11	20	30	40	36	2.61													

Technotest
 Technotest Center, 893 EDSA, Q.C.
 Tel. Nos.: 9242004/9242007 FAX: 9242156



MACHINE: TONE
 DRILLER: E. LABRAMONTE
 SUPERVISOR: D. CONTAWA

LEGEND:

- SS - Split Spoon Sample
- WS - Wash Sample
- UDS - Undisturbed Sample
- CR - Core Sample

FINAL BOREHOLE LOG AND SUMMARY OF TEST RESULTS

A - 2c

PROJECT: FSDRRTSMERP	Elev. (MLLW) -7.90	Depth of Water: 8.50 m
LOCATION: Port of Dumangas, Dumangas, Iloilo	Weather: F A I R	Date Measured: 20 Jun. 2007
BH NO.: BH-2	DATE DRILLED: Jun. 19 - 20, 2007	Time Measured: 5:00 PM
	Northing: 1190552.00	
	Easting: 467924.00	

DEPTH (m)	SAMPLE NO.	RECOVERY (%)	LOG SYMBOL	CLASSIFICATION	ROD	DESCRIPTION	BLOWS (SPT)			STANDARD PENETRATION TEST (SPT)				Natural Moisture Content, %	Specific Gravity	Atterberg Limits		UCT, q _p , kg/cm ²	CONSO. TEST		SIEVE ANALYSIS % PASSING				
							15 cm	15 cm	15 cm	N-VALUE						LL, %	Pl, %		Compression Index, C _c	Precon. Pres. P _c , kg/cm ²	4	10	40	200	
21	SS-14	58	[Symbol]	CH		CLAY; light gray; traces of sand; high plasticity; FIRM.	2	3	4																
22																									
23	SS-15	78	[Symbol]	GM		Silty Sandy GRAVEL; light gray; rounded to subrounded gravel; traces of decayed wood; slight to none plastic fines; DENSE.	4	4	4	61/30	46	2.6	39	18								100	76		
24	SS-16	11	[Symbol]	SC		Clayey SAND; greenish gray; fine to very fine grained sand; moderate to low plasticity; VERY DENSE.	23	23	22																
25																									
26	SS-17	71	[Symbol]	SM		Silty SAND; greenish gray; fine to very fine grained sand; appreciable non-plastic fines; MEDIUM DENSE.	25	25	36	61/30	40	2.6	39	16									100	47	
27	SS-18	71	[Symbol]	SM			14	13	13																
28																									
29	SS-19	11	[Symbol]	SC		Clayey SAND; greenish gray; fine to very fine grained sand; moderate to low plasticity; VERY DENSE.	19	24	27	51/30															
	SS-20	49	[Symbol]	SC			18	26	25	51/30	39	2.59	32	14										100	56

Technotest
 Technotest Center, 893 EDSA, Q.C.
 Tel. Nos.: 9242004/9242007 FAX: 9242156



MACHINE: TONE
 DRILLER: E. LABRAMONTE
 SUPERVISOR: D. CONTAWE

LEGEND:
 [Symbol] SS - Split Spoon Sample [Symbol] WS - Wash Sample
 [Symbol] UDS - Undisturbed Sample [Symbol] CR - Core Sample

FINAL BOREHOLE LOG AND SUMMARY OF TEST RESULTS

A - 2d

PROJECT: <u>FSDRRTSMERP</u>	Elev. (MLLW) <u>-7.90</u>	Depth of Water: <u>8.50 m</u>
LOCATION: <u>Port of Dumangas, Dumangas, Iloilo</u>	Weather: <u>F A I R</u>	Date Measured: <u>20 Jun. 2007</u>
BH NO.: <u>BH-2</u> DATE DRILLED: <u>Jun. 19 - 20, 2007</u>	Northing: <u>1190552.00</u>	Time Measured: <u>5:00 PM</u>
	Easting: <u>467924.00</u>	

DEPTH (m)	SAMPLE NO.	RECOVERY (%) SAMPLE	LOG SYMBOL	CLASSIFICATION	ROD	DESCRIPTION	BLOWS (SPT)			STANDARD PENETRATION TEST (SPT)				Natural Moisture Content, %	Specific Gravity	Atterberg Limits		UC _T , q _p , kg/cm ²	CONSO. TEST		SIEVE ANALYSIS % PASSING				
							15 cm	15 cm	15 cm	N-VALUE 10 20 30 40						LL, %	Pl, %		Compression Index, C _c	Precon. Press. P _c , kg/cm ²	4	10	40	200	
31	SS-21	16		SC		Clayey SAND; greenish gray; fine to very fine grained sand; moderate to low plasticity; VERY DENSE.																			
						END OF BORING 31.50 M	20	25	27				52												
32																									
33																									
34																									
35																									
36																									
37																									
38																									
39																									

