

付 図

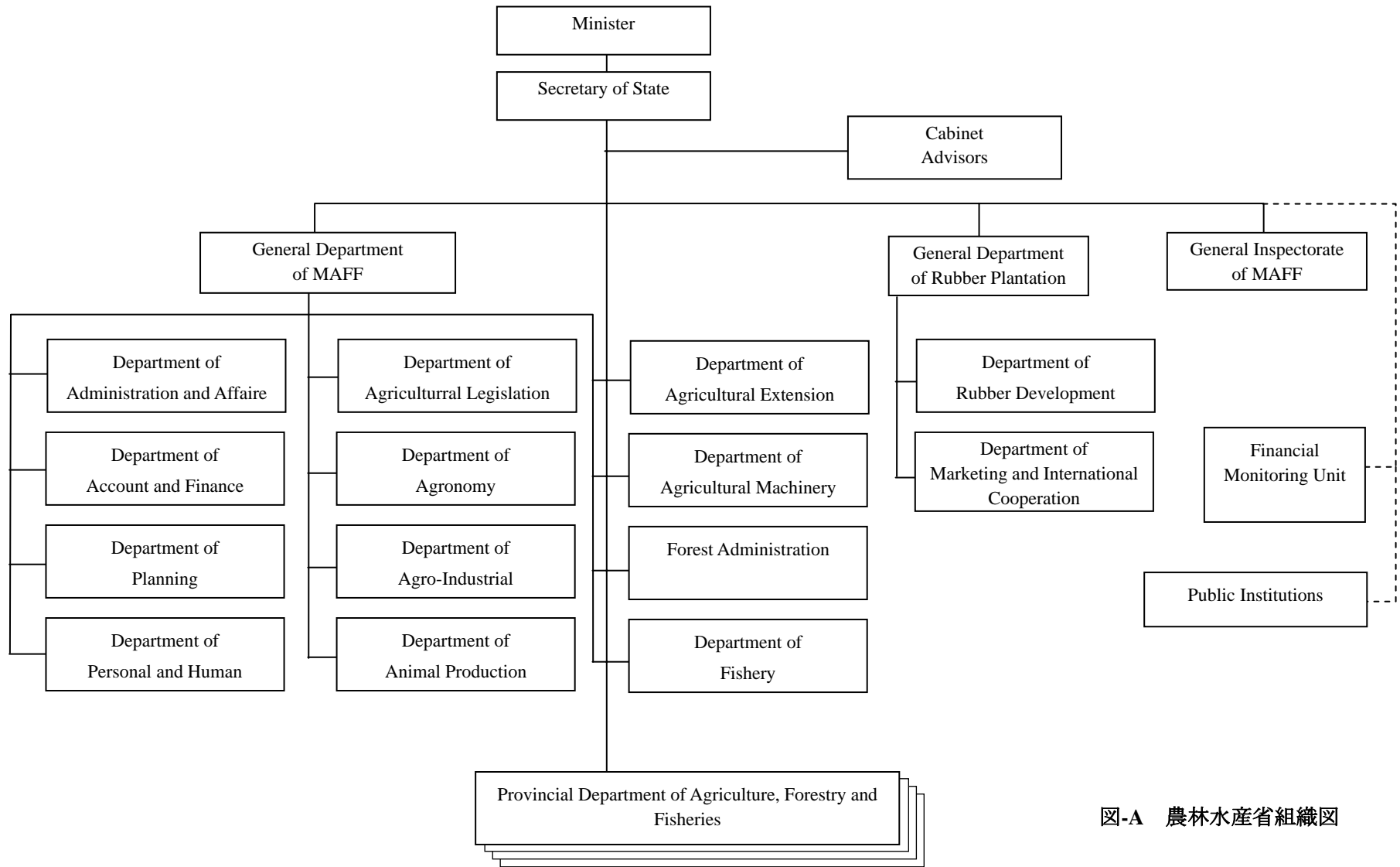


図-A 農林水産省組織図



図-B カンボジア全国地図

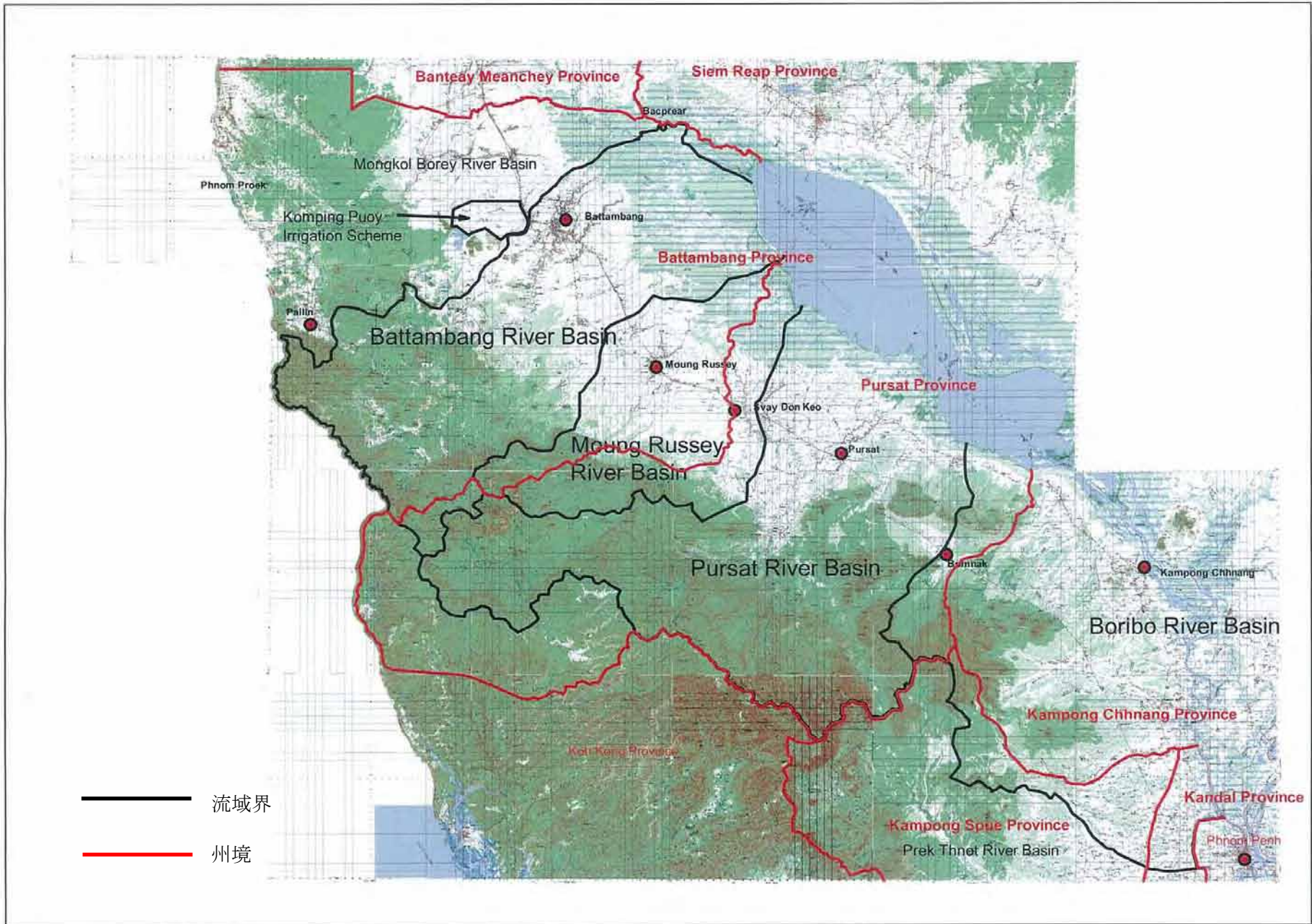


図-D 調査対象流域位置図及び行政界

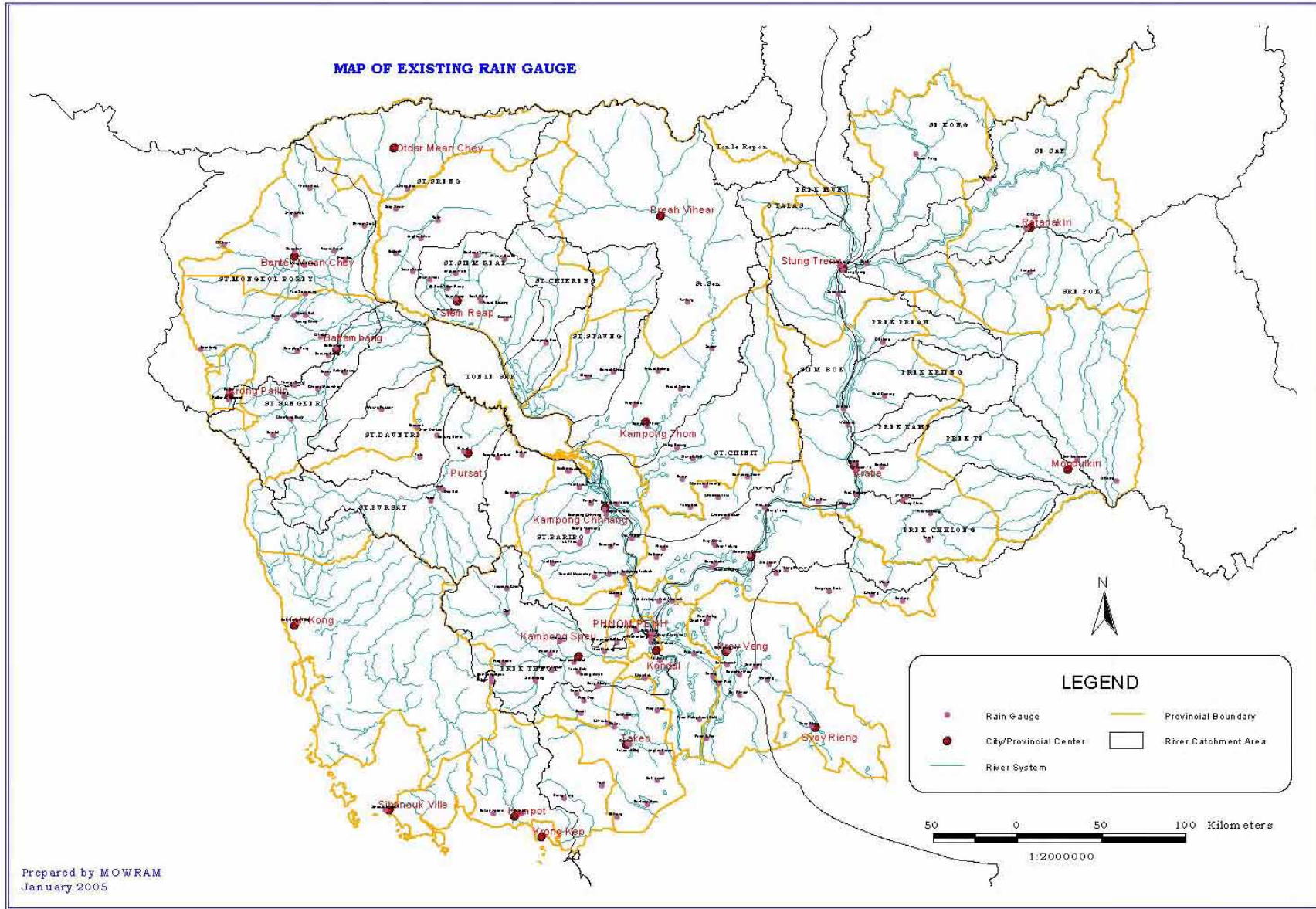


図-E 降水量観測所位置図

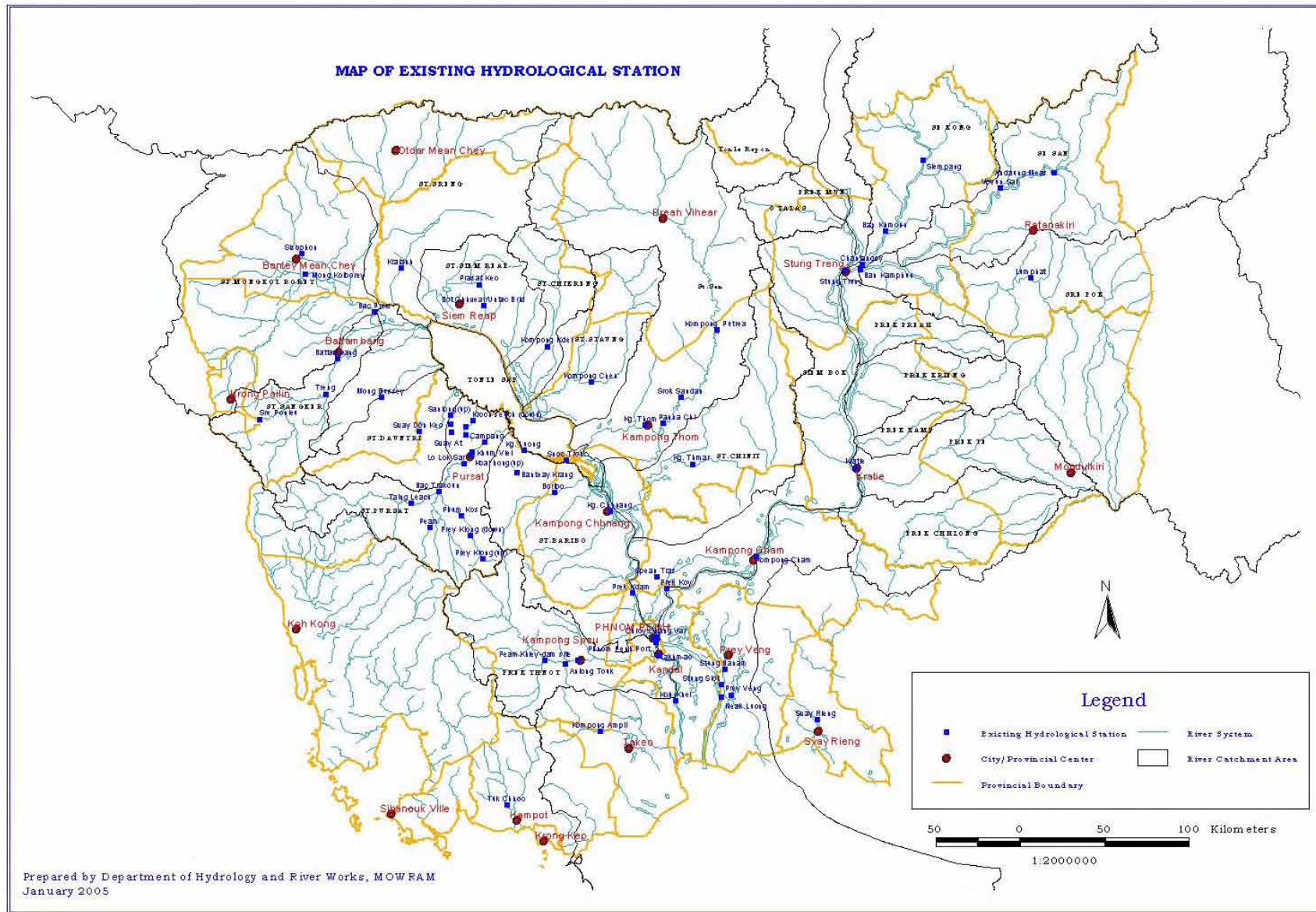


图-F 河川水位・流量観測所位置図

			1980	1981	1982	1983	1984	1985	1986	1987	1988	1989	1990	1991	1992	1993	1994	1995	1996	1997	1998	1999	2000	2001	2002	2003	2004	2005		
Battambang Province																														
1	Battambang		[Shaded bar from 1980 to 2005]																											
	他に14観測所があるが、データは未整理である。																													
Pursat Province																														
1	Boeung Kantout	Krakor																												
2	Dap Bat	Sampaomeas																												
3	Svay Don Keo	Bakan																												
4	Boeung Khina	Bakan																												
5	Krakor	Bornak																												
6	Kravanh	Kravanh																												
7	Peam	Kravanh																												
8	Phteah Rung	Kravanh																												
9	Phteah Rung(2)	Kravanh																												
10	Talo	Bakan																												
Kampong Chhnang Province																														
1	Kampong Chhunang	Kampong Chhunang																												
2	Boeung Po	Kampong Tralach																												
3	Kampong Tralach	Kampong Tralach																												
4	Rolea Phear	Rolea Phear																												
5	Pon leiy	Boribo																												
6	Pong Ro	Rolea B'ier																												
7	Prey Kiri	Chul Kiri																												
8	Sameaki	Sameakki-Mean Chey																												
9	Seitheiy	Sameakki-Mean Chey																												
10	Sraskeo	Boribo																												
11	Tang Krasang	Touek Phous																												
12	Touek Phous	Touek Phous																												
13	Trongel	Kampong Leng																												

図-G 降雨資料観測期間

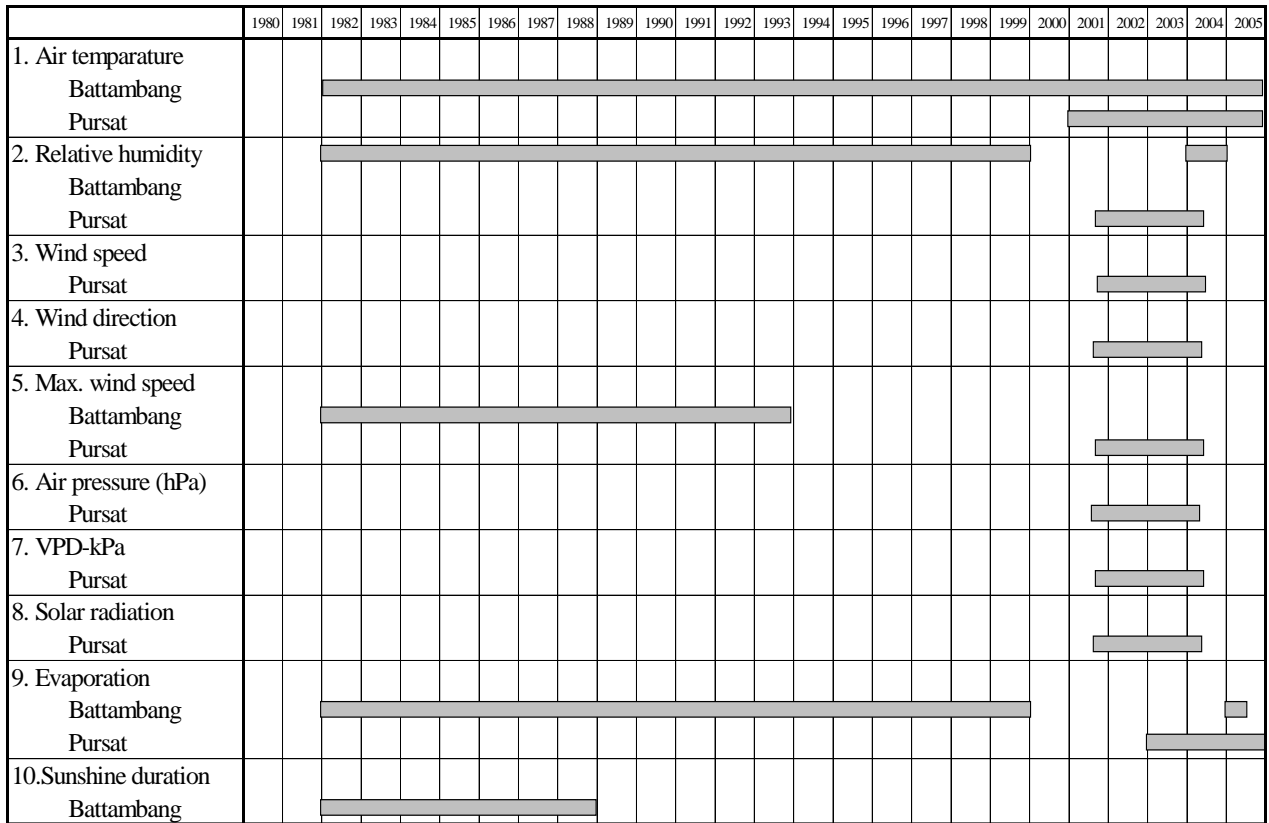


図-H 気象資料観測期間

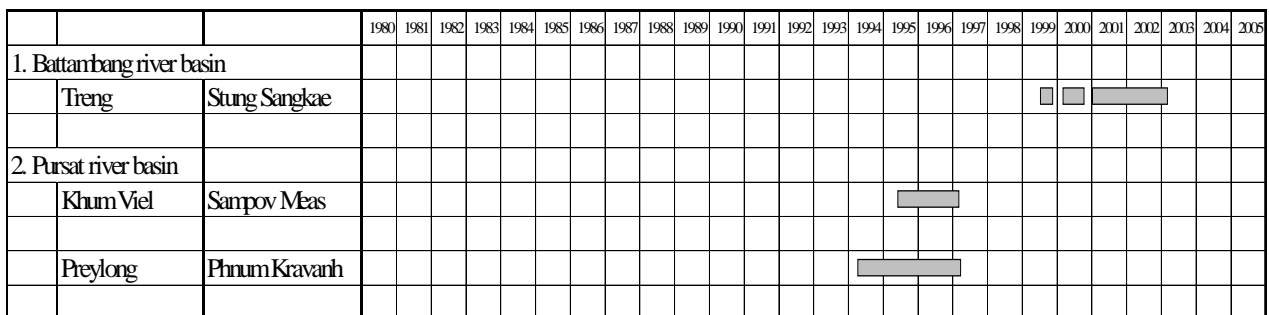
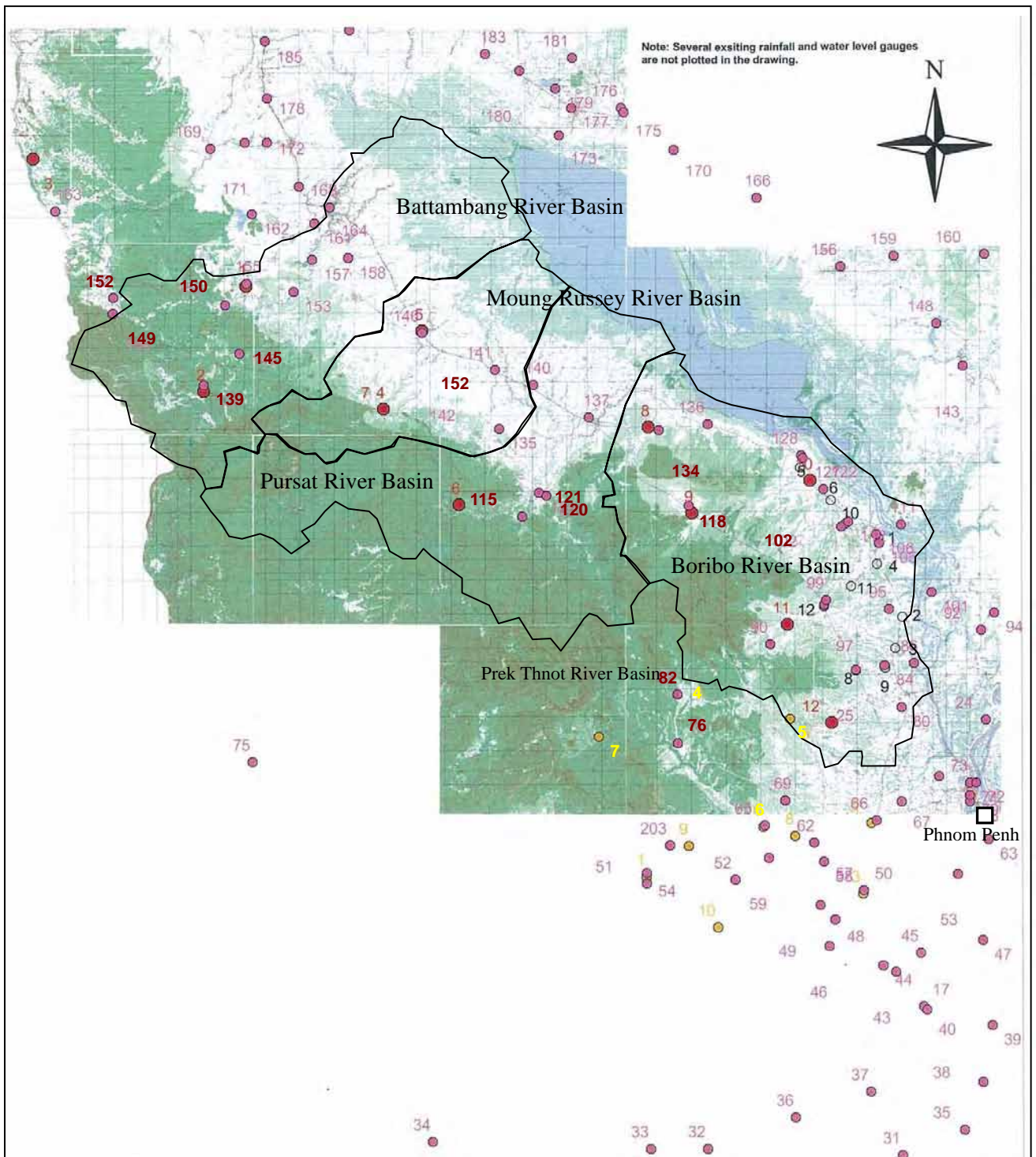


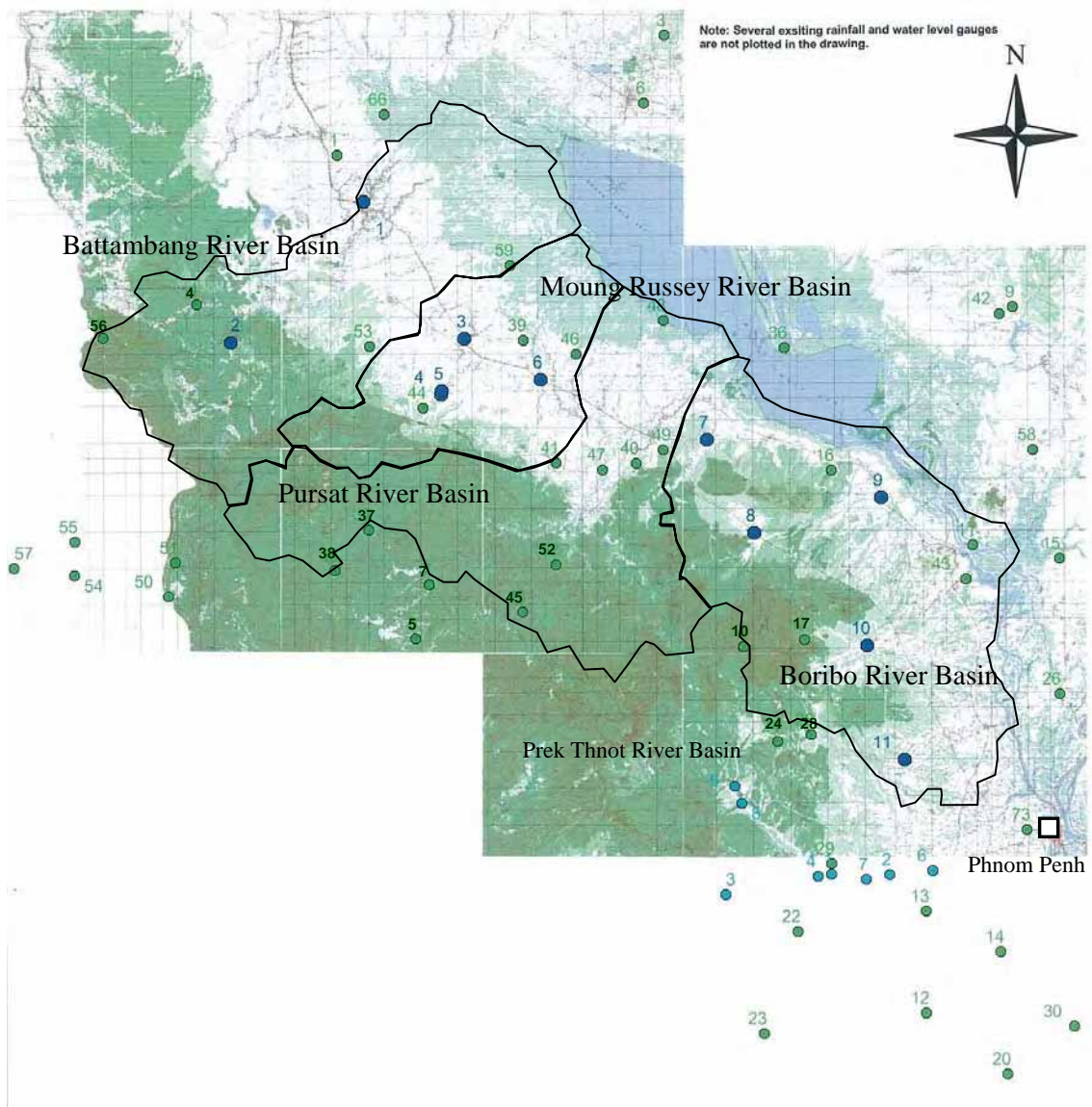
図-I 水文観測期間 (流量観測)



注：図中の番号は表に示す番号を示す。

- 既存雨量観測所
- プレクト・ノット川流域農業総合開発計画調査における雨量観測所
- 本調査における自記雨量計設置場所

図-J 降雨観測所位置図



注：図中の番号は表-に示す番号を示す。

- 既存流量観測所
- プレクト・ノット川流域農業総合開発計画調査における流量観測所
- 本調査における量水標設置場所

図-K 河川水位・流量観測所位置図

バタンバン (サンカイ川)

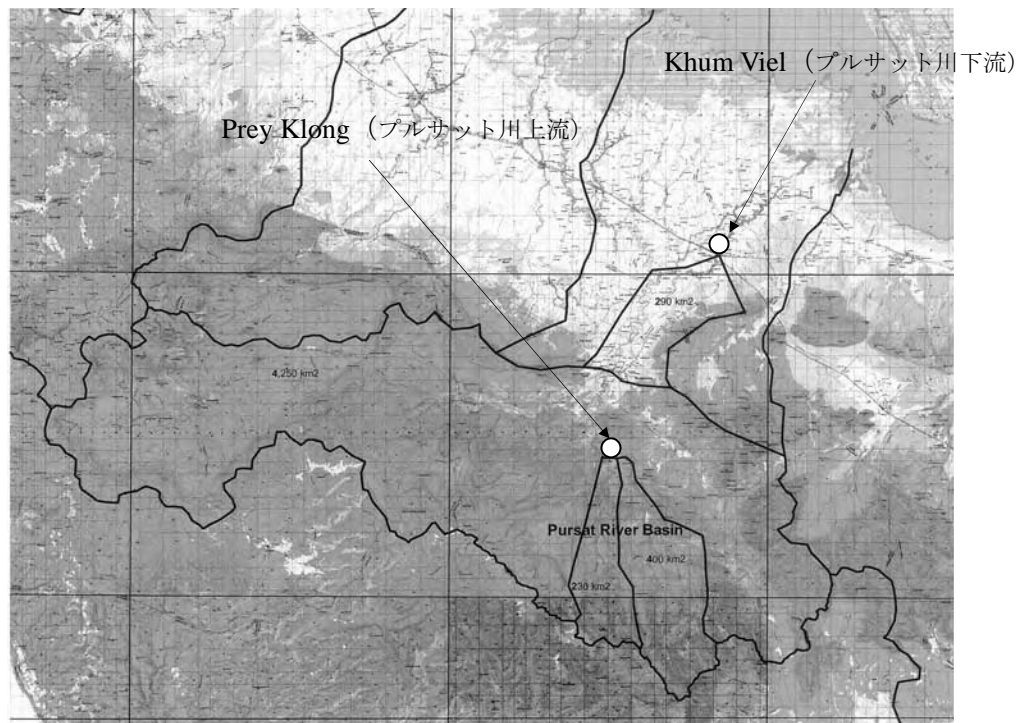
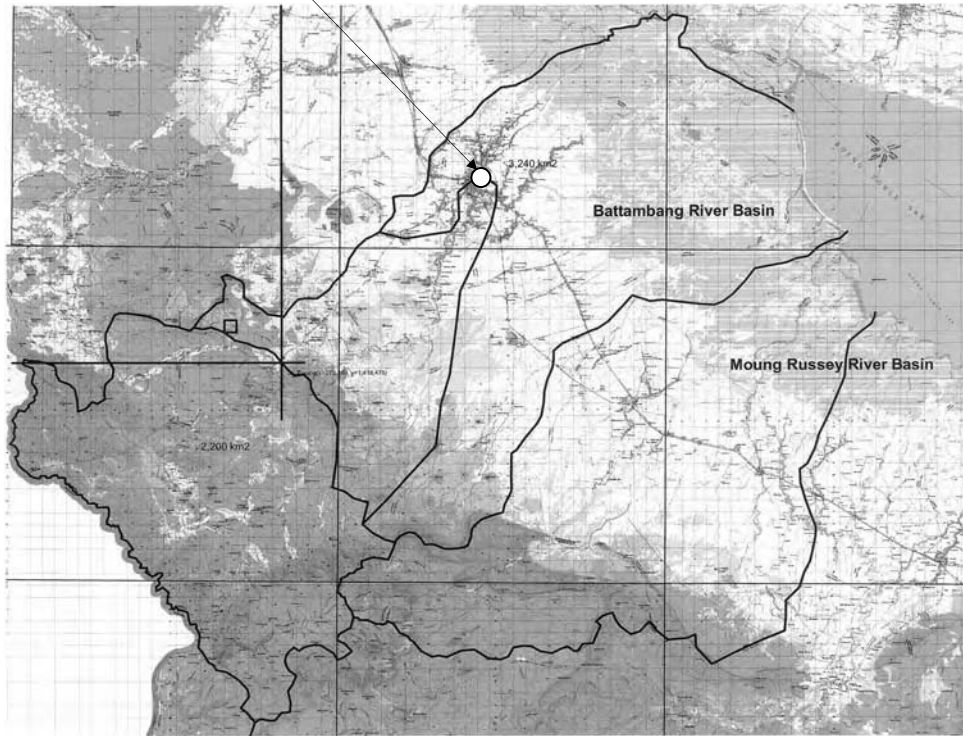
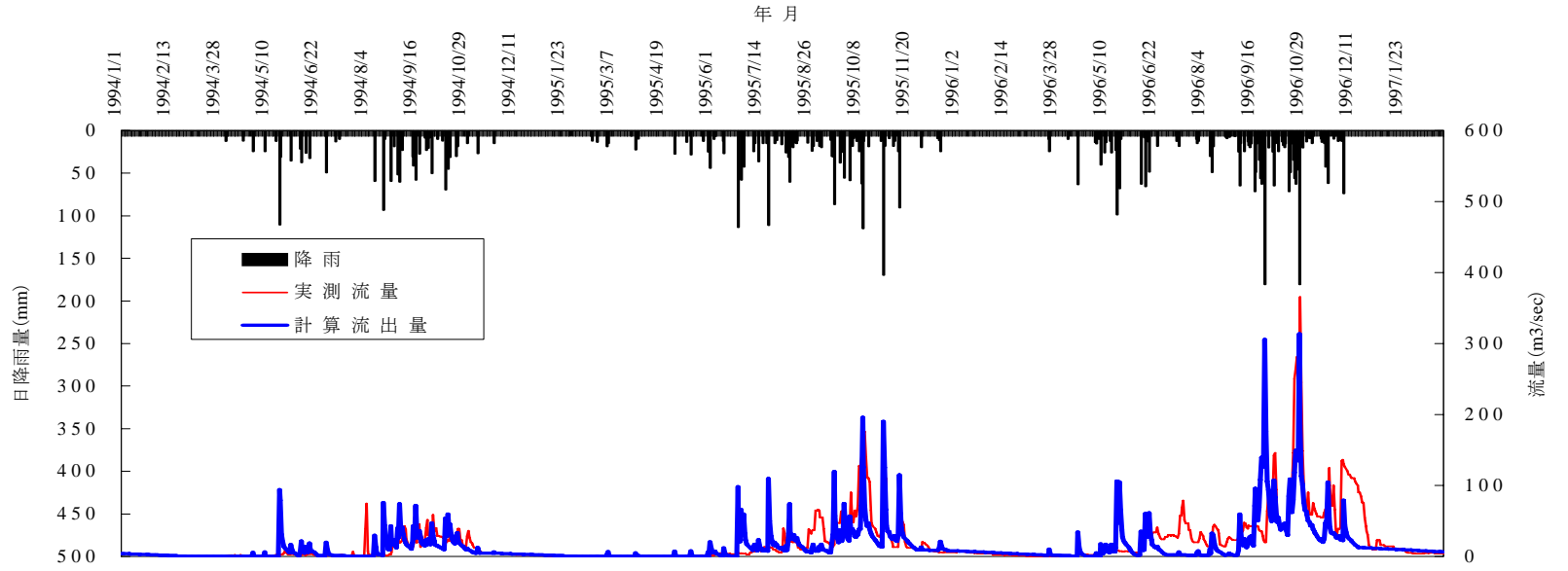


図-L 水文観測位置図 (流量観測)

流出解析結果
(プルサット川上流)



流出解析結果
(プルサット川下流)

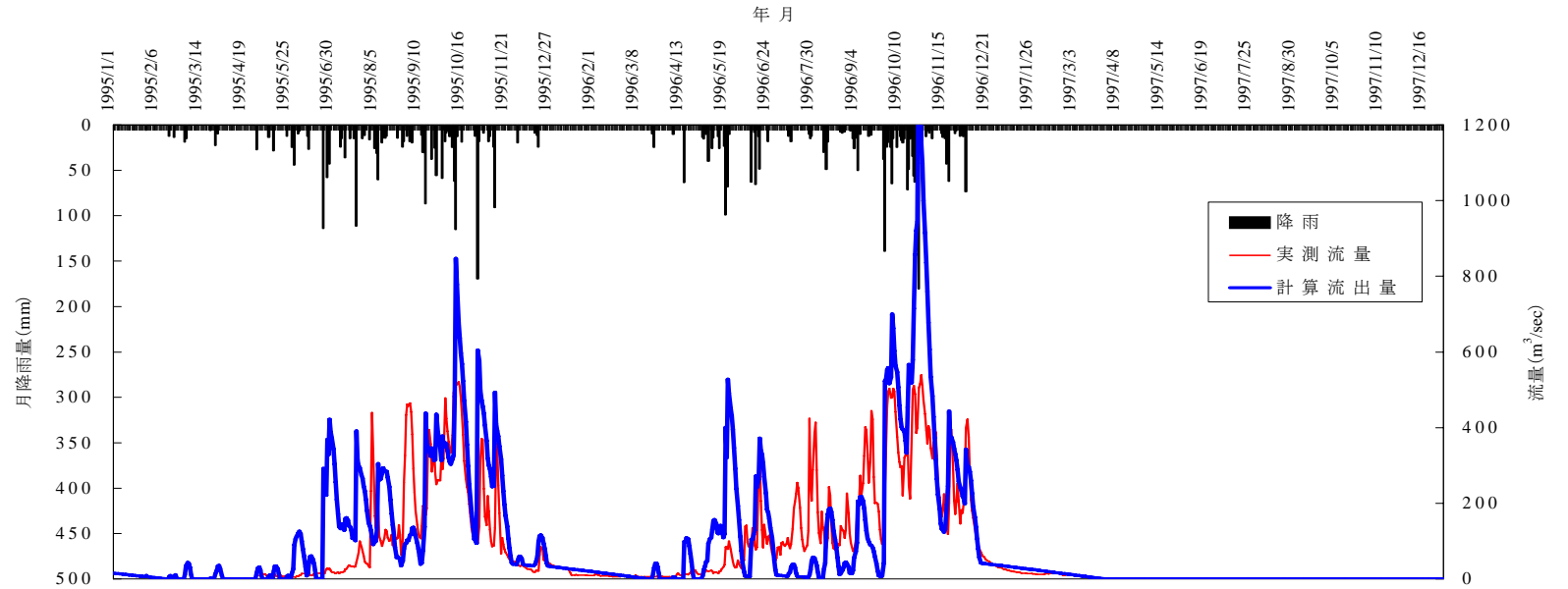
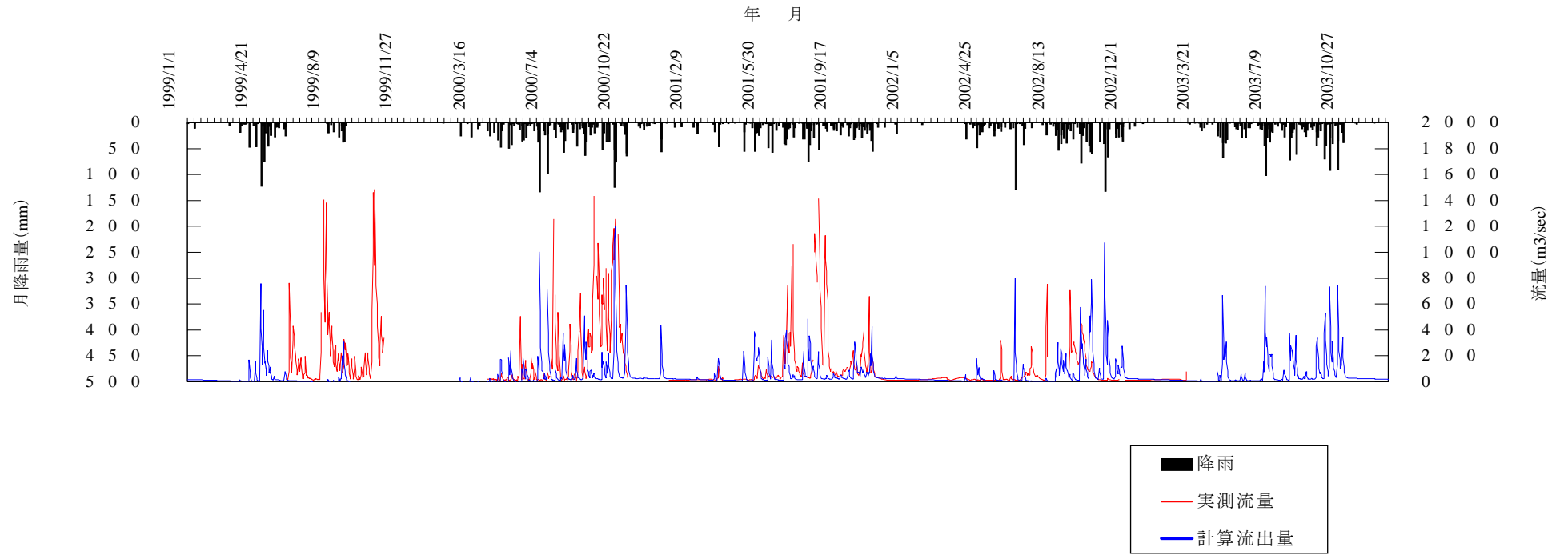


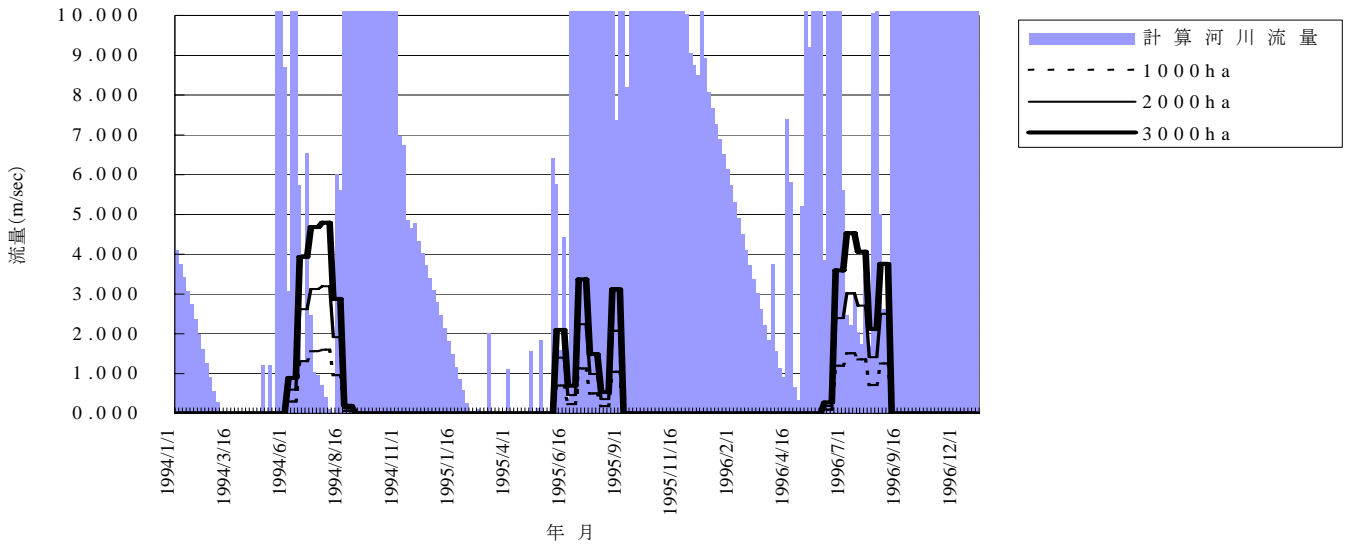
図-M.1 タンクモデルによる流出計算結果



流出解析結果 (サンカイ川下流、バットンバン)

図-M.2 タンクモデルによる流出計算結果

灌溉用水量



灌溉用水量

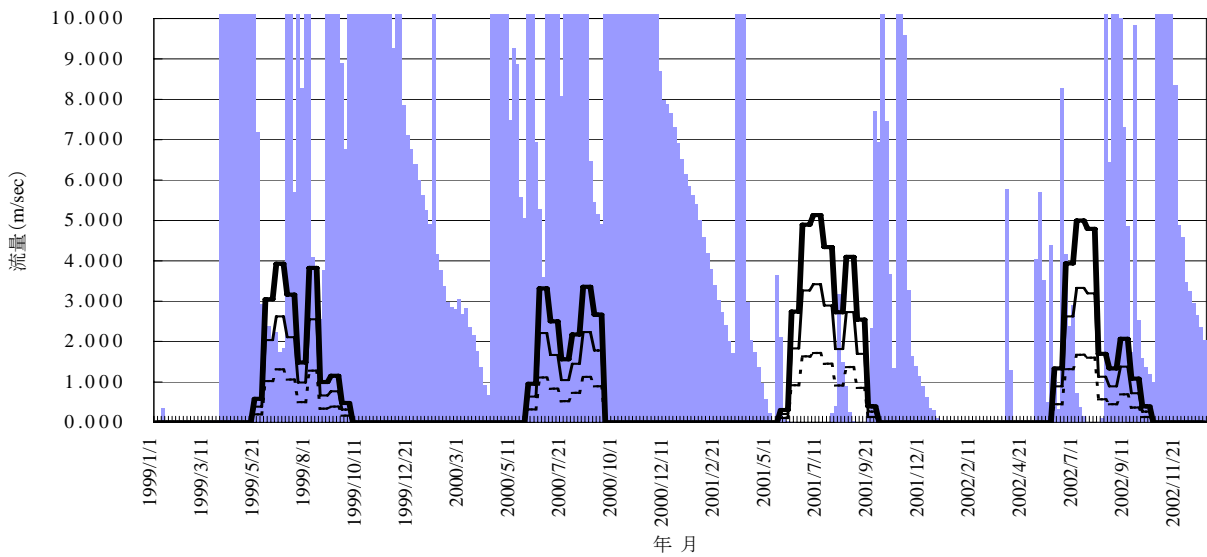


図-N 水収支計算例

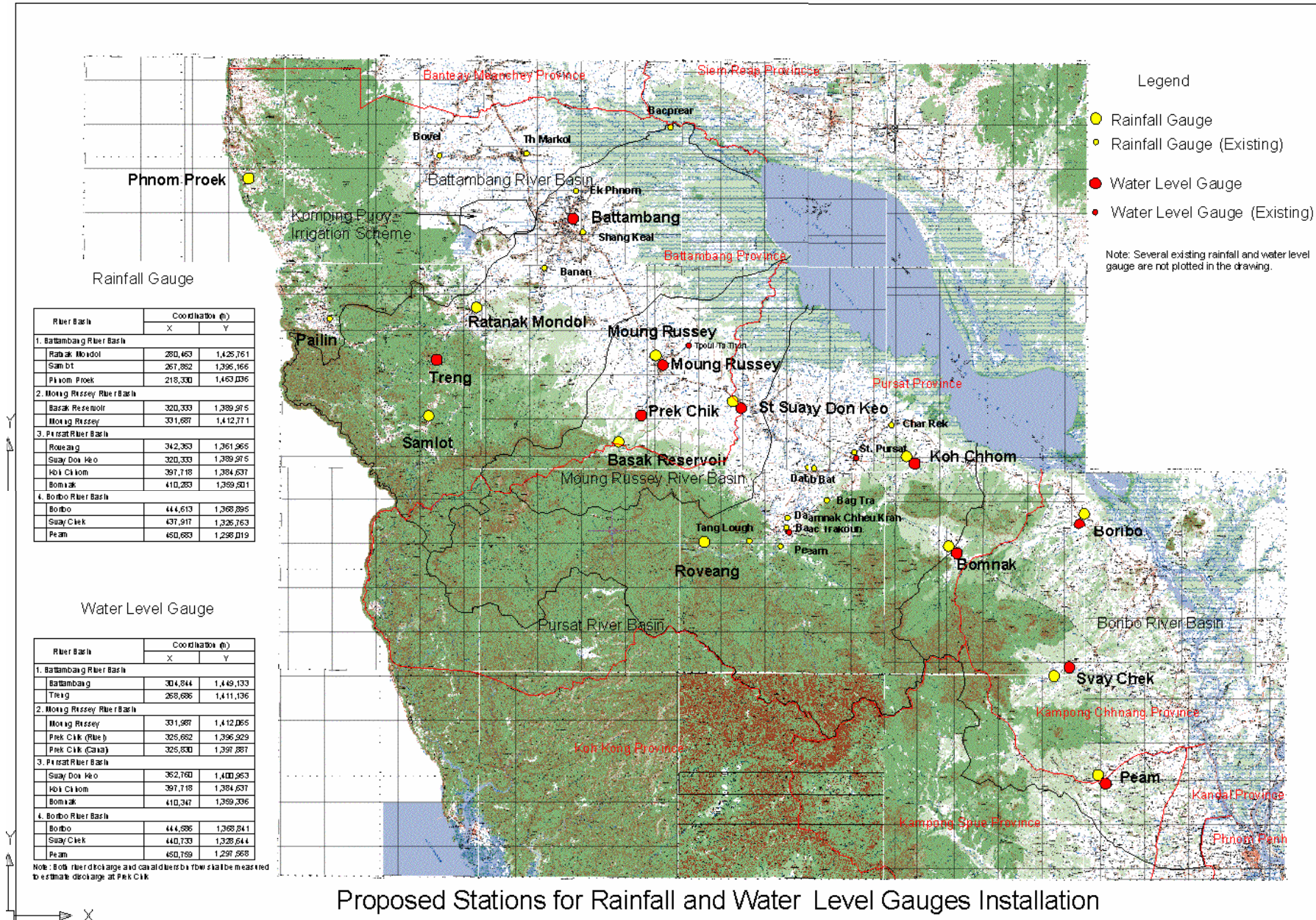


図-O 雨量及び河川水位・流量観測所位置図

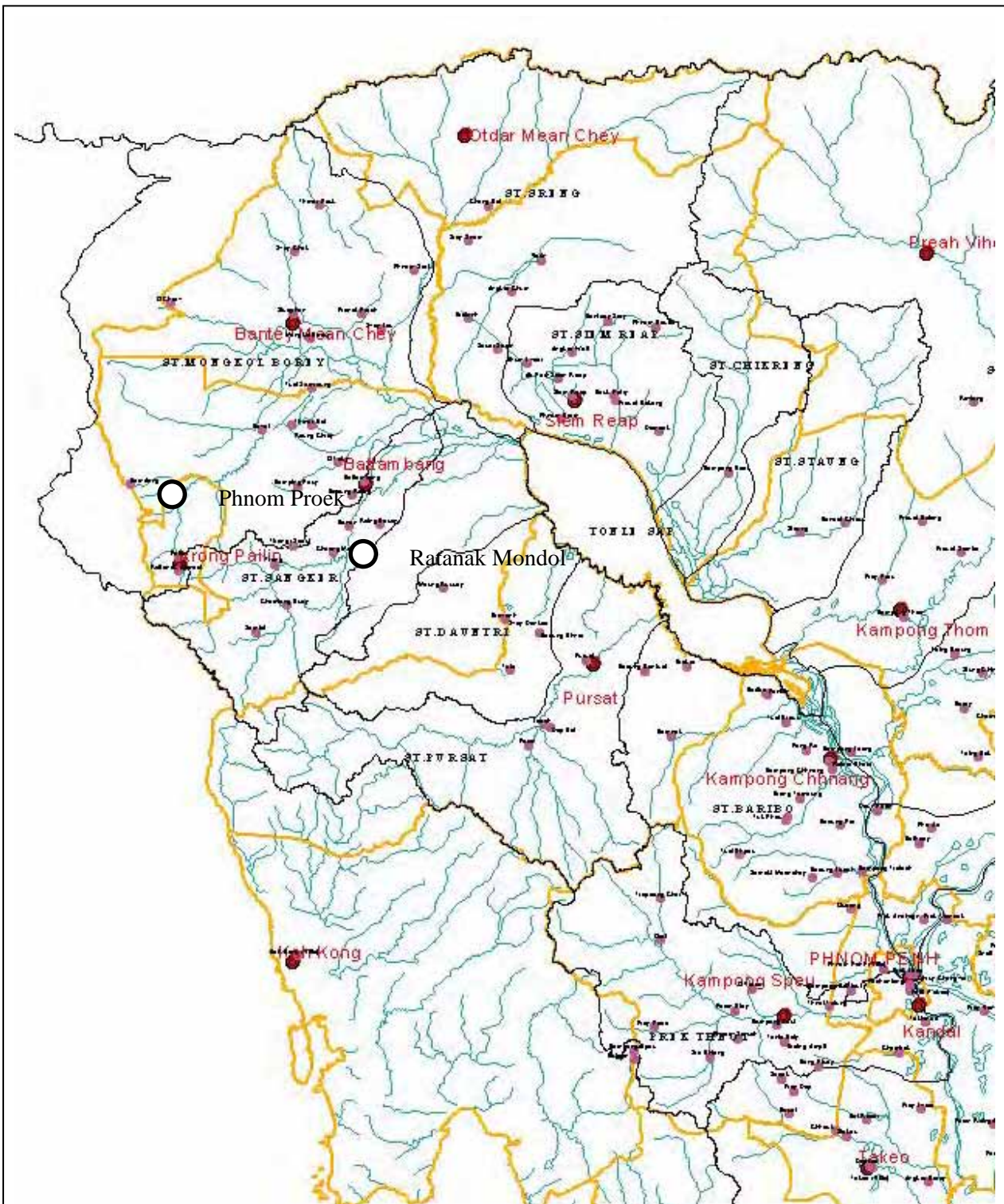


図-P 降水量観測所位置図（本格調査前）

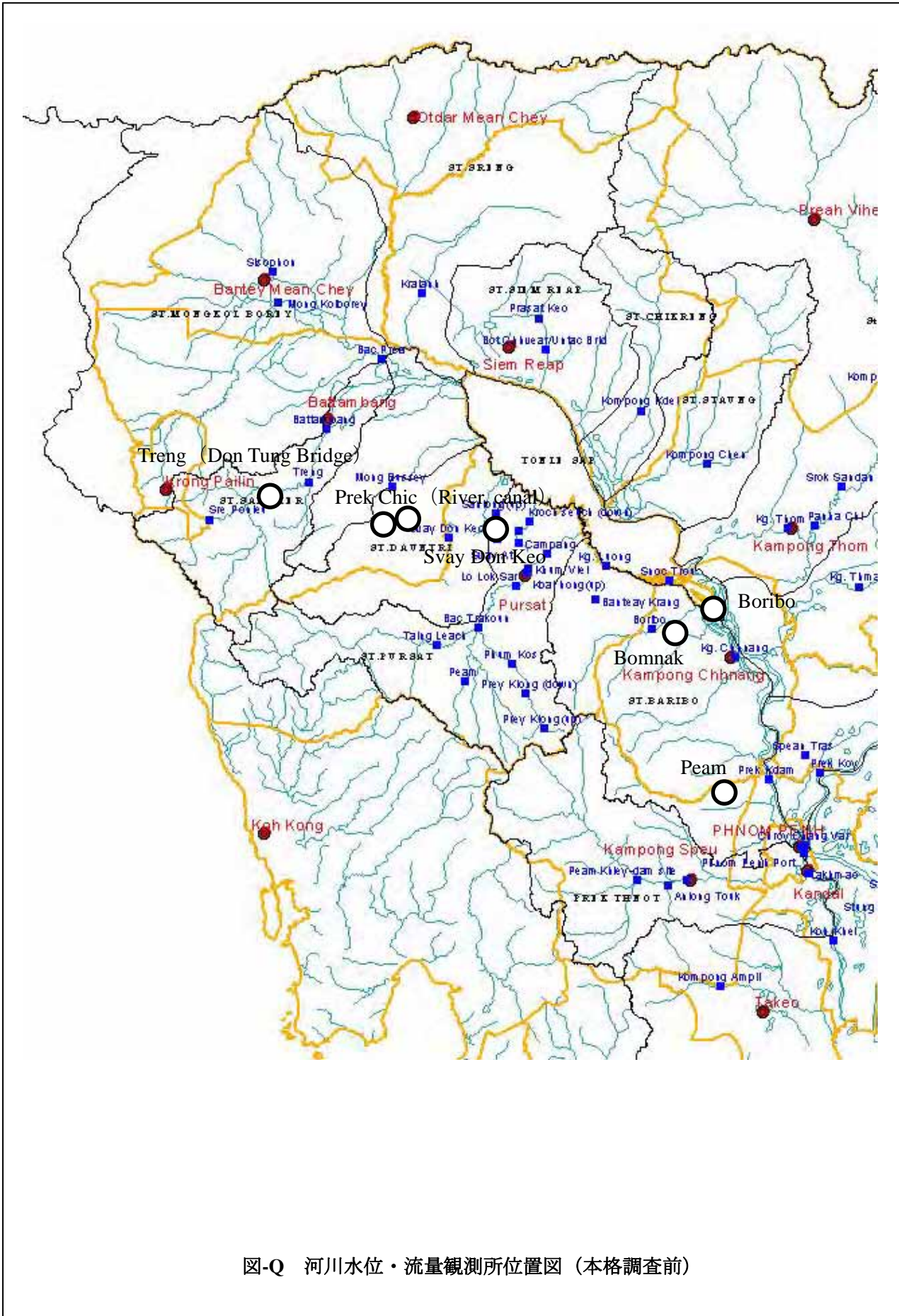
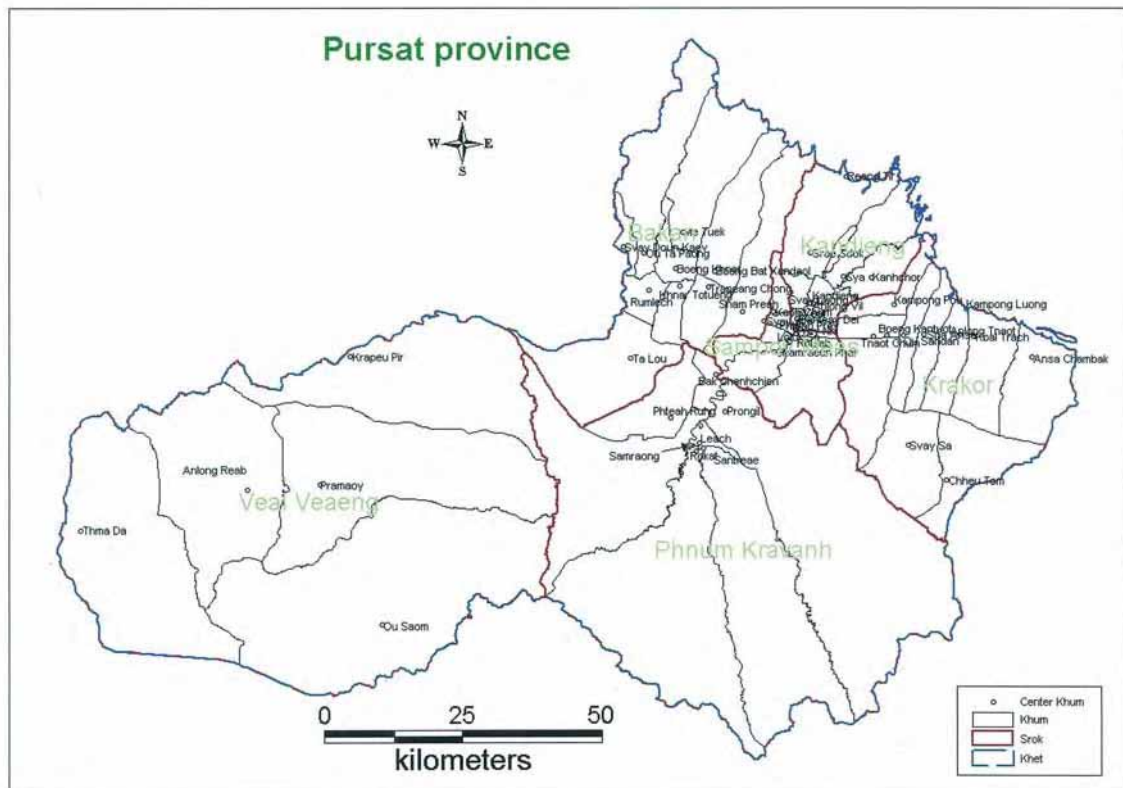
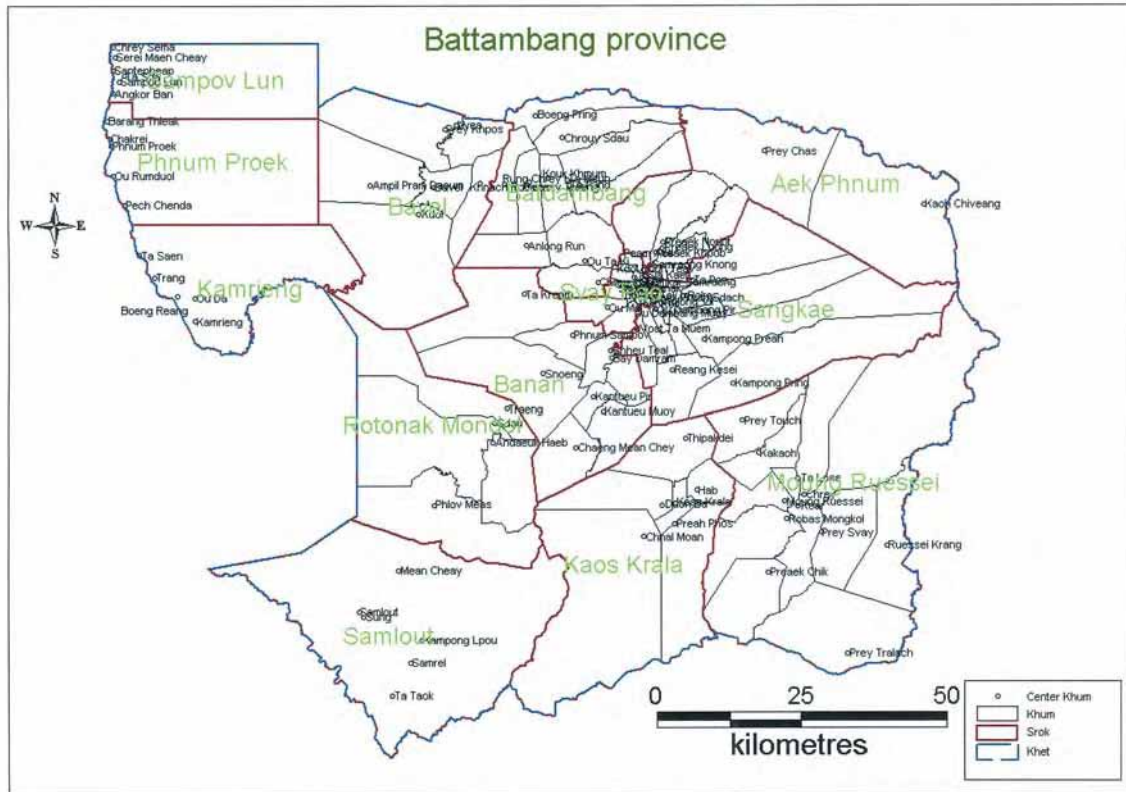
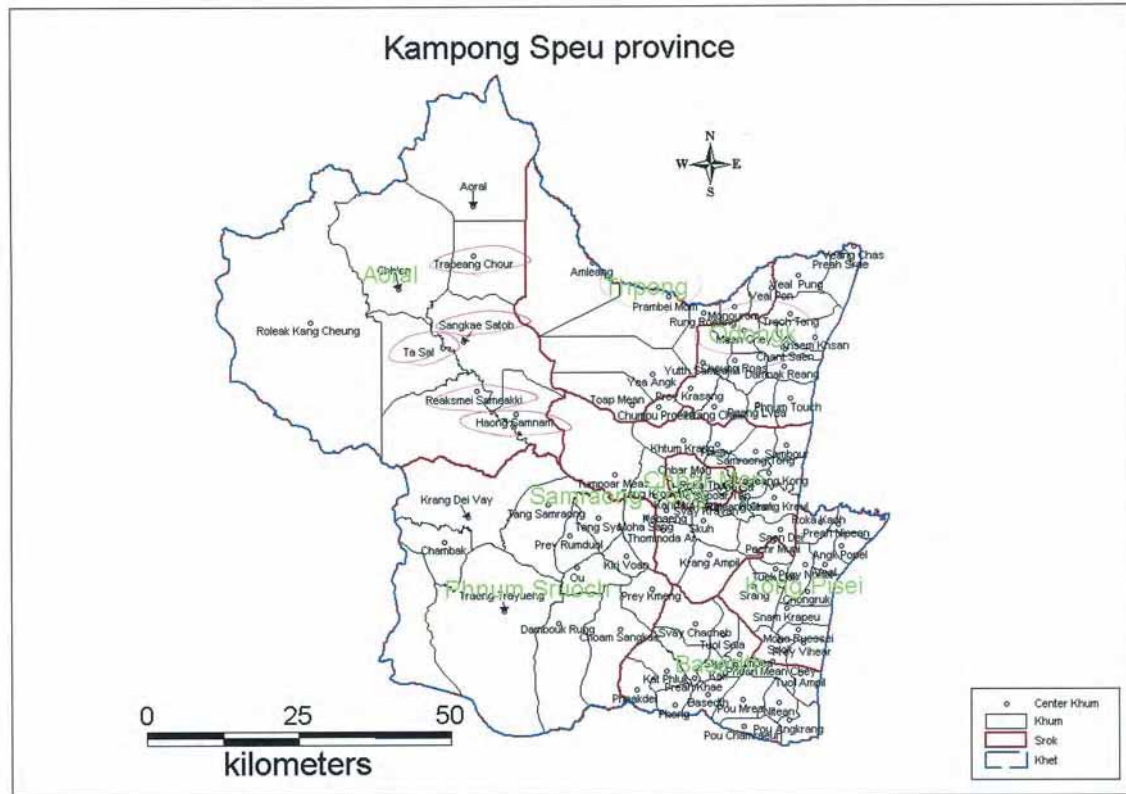
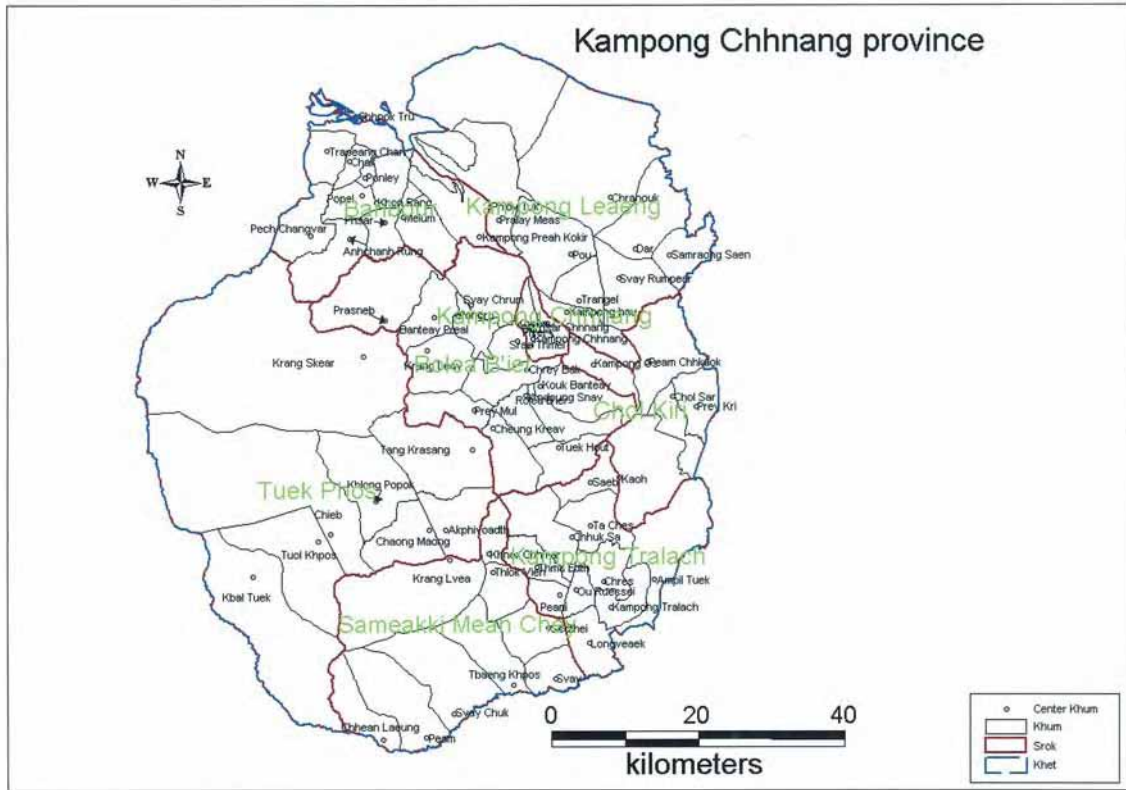


図-Q 河川水位・流量観測所位置図（本格調査前）





付 表

表-A 世界銀行グループの国別援助戦略 (CAS : Country Assistance Strategy) (CAS OBJECTIVE 2 : Improve natural resource management)

Increase access of local communities to benefits of land and forests

Longer-term Development Agenda		CAS Outcomes		Development Partner Interventions	
Strategic and Longer Term/Higher Order Country Outcomes	Governance Impediments to Outcome Attainment	CAS Outcomes and Indicators Expected to be Influenced	Intermediate Indicators of Progress toward CAS Outcomes	IDA/IFC/MPDF/ FIAS Interventions to Support Outcomes	Other Partners' Interventions
<p>Strengthen overall framework for management of land resources RGC will review idle and vacant state lands, as well as state lands illegally occupied by private entities - Rectangular Strategy</p> <p>Improve security of tenure and access to land RGC will create a favorable environment conducive to private sector enterprise by accelerating the distribution of land and the issuance of secure land titles - Rectangular Strategy</p>	<p>Lack of clear assessment, mapping, classification and registration of state lands (almost 80% of total land area) facilitates encroachment on forests, illegal sales and “land grabbing”</p> <ul style="list-style-type: none"> • All land titles destroyed under Khmer Rouge • Weak judicial system facilitates land grabbing by powerful groups, increasing vulnerability of local communities, particularly poor and indigenous groups • Allocation of state land for agriculture has favored large plantations (economic land concessions) over smallholders 	<p>A. Increased public access to information regarding status and use of state lands and local participation in state land use decisions</p> <ul style="list-style-type: none"> • Publicly accessible state land registry established by 2007 • Ten provincial land use classification and allocation maps completed by Provincial Land Use Allocation Committees with local participation <p>B. Increased number of poor Cambodians able to benefit from formal mechanisms for access to and secure ownership of private lands</p> <ul style="list-style-type: none"> • 30% of plots under 5 ha. registered • 75% of land disputes involving powerful interests – including state land and economic concessions - evaluated as decided fairly by civil society monitors of CC • Policy statement on government priorities in land allocation in 2005 • Proportion of state land allocated to social concessions relative to economic land concessions increases each year by 10% 	<p>Improving land use management</p> <ul style="list-style-type: none"> • State Land Management Subdecree enacted in 2005 • Completion of aerial photography program and orthophotomap production by 2006 • State land mapping completed for 10 provinces in 2007 • Land use assessment completed in 2008 <p>Improving land titling and regulatory framework</p> <ul style="list-style-type: none"> • One million plots titled through transparent, low cost systematic registration by 2007 • Indigenous Peoples Land Subdecree enacted in 2006 • 75% of cadastral commission cases resolved within 100 days at each level • Implementation of measures to enable equitable access, fair, just, timely and accountable judicial hearings on land • Agrarian structure seminar in 2005 • 10,000 qualified, landless households receive at least 3 ha. of productive land, resettlement and production support through community-based mechanisms by 2008 	<p>ONGOING PROJECTS: LMAP I; Forest Concession Management</p> <p>NEW LENDING: Land Allocation for Social & Economic Development; LMAP II SWAp; PRSCs</p> <p>AAA/OTHER: Rural Sector Note; PSIA Social Concessions; Social Concessions; Study; Access to Justice Note; Land Policy Note; Poverty-Environmental Nexus Study; Environmental Monitors; Forestry Policy Note</p> <ul style="list-style-type: none"> • GEF: Biodiversity and Protected Area • JSDF: Participatory Forestry <p>local, national and centralized forest</p> <ul style="list-style-type: none"> • ProFor: Support for technical studies • GEF Operation 	<p>ADB legal drafting; GTZ; Finland; AusAID; CIDA; JICA; DANIDA; DFID</p> <p>Land and Agriculture TWG donors – Japan; AusAid; AFD; AusAid; AFD; GTZ; Oxfam UK; NGO Forum, CDRI</p> <p>CIDA and GTZ support for Agrarian Structure Study</p>

<i>Longer-term Development Agenda</i>		<i>CAS Outcomes</i>		<i>Development Partner Interventions</i>	
Strategic and Longer Term/Higher Order Country Outcomes	Governance Impediments to Outcome Attainment	CAS Outcomes and Indicators Expected to be Influenced	Intermediate Indicators of Progress toward CAS Outcomes	IDA/IFC/MPDF/ FIAS Interventions to Support Outcomes	Other Partners' Interventions
<p>Improve management of forests to meet local, national and global needs RGC will ensure sustainable forest management based on: (i) the rational and strict monitoring of forest exploitation according to international best practices in forest management; (ii) protected area system to protect biodiversity and endangered species; and (iii) community forestry - Rectangular Strategy</p>	<p>Reduction of highly centralized forest concession system leaves strategic management vacuum which provides opportunity to increase role of local benefit sharing approaches to forest management Need to develop consistent and sustainable approach to PA management and to ensure greater oversight and control over protected areas system programs supported by INGOs</p>	<p>C. Strengthened systems for management of forest resources based on working with local communities</p> <ul style="list-style-type: none"> • Development of sustainable and equitable forest policies and improved frameworks for resolution of conflicts/disputes over implementation and regulation of forest management systems • 100% increase each year in forest area under local benefit sharing management • Protected Areas Law submitted to National Assembly • National Protected Areas System Plan adopted to guide consolidation of PA system • Five protected areas have completed management plans reflecting principles of the new PA Law such as boundary demarcation based on participatory processes, and co-management areas 	<p>Improving management of forests</p> <ul style="list-style-type: none"> • Technical secretariat of Forestry TWG supported to implement studies of forest management models, organizational options, legislative preparation • Monitoring system for forests and protected areas reestablished in FY05 and maintained • Pilot benefit sharing approaches to forestry, including community forestry, implemented in 2005/6, and evaluated with TWG by 2007 • Protected Areas management plan preparation manual completed in 2005 • Sustainable financing plan for PAs system completed in 2005 • Standard national ranger training programs initiated in 2005 		<p>Forestry TWG – JICA; DANIDA; FAO; DFID for Independent Forest Sector Review follow-up; USAID; DANIDA; DFID; WCS; CI; WWF; WildAid</p>

Source : Country assistance Strategy of the World Bank Group 2005-2008

表-B ADB の開発目標、実施事業

Item	Indicators		
	5 years ago (1999–2003)	Current (2004)	Next 5 years (2005–2009)
A. Sector Outcomes			
Agricultural GDP growth (% per annum)	2.8%	-2.7%	3.5% (SEDP II target)
Agricultural productivity growth	Stagnant	Slow	Improved
Rice yield (paddy ton/hectare; wet and dry season)	1.7	2.1	2.5
Farmers' income growth	Stagnant	Slow	Improved
Incidence of rural poverty	40%	40%	32%
Natural resources/environment	Under severe stress	Under severe stress	Regionally stabilized
Economic losses from floods and droughts	\$160 million (\$36 million) in 2000 (2001) with >3.5 million people affected in 2000 (2001)	[No major flood or droughts]	Significantly below 2001/ 2002 level for events of similar magnitude
Sector policy and institutional framework	Inadequate	Little progress towards market-oriented institutional environment	Significant progress towards market-oriented enabling environment
B. Sector Outputs			
Access to productive resources			
Land (land titling under new Land Law)	Disputed land rights	50,000 titles (as pilot)	1 million titles
Agricultural land under irrigation	<16%	16% (estimate)	24%
Sustainability of irrigation schemes	Focus on “hardware” (e.g. dams, canals etc.)	Decentralized management and cost recovery models under development	At least 50% of irrigation area under sustainable participatory management
Rural finance	Inadequate institutional framework, limited spatial coverage	Framework in place, spatial outreach improved	Financial institutions ensure adequate spatial coverage
Agricultural inputs (e.g., seeds, fertilizer)	Inadequate	Improved but quality problems persist	Input markets and quality management improved
Access to improved technology	Inadequate	At project level only	Broad-based
Access to domestic and export markets	Limited due to physical and institutional barriers	Limited due to physical and institutional barriers	Institutional and physical barriers reduced
Agricultural diversification	Inadequate	Limited (pilot project based)	Improved through better access to markets and emerging agro-industries
Management of natural resources	Unsustainable	Unsustainable	Improved (in particular in Tonle Sap Basin; IWRM and river basin approach)
Sector policies and institutions			
Policy and institutional framework	Policy framework outdated; institutions lack capacity to steer development; weak links between sector policies, strategies and investment plans	Reforms initiated (e.g. Land Law, Water Law and Policy, General Fisheries Plan, etc.) but regulatory framework and implementation weak	Policy reforms achieved, institutional efficiency improved and links between sector policies, strategies and investment plans strengthened
Information management	Collection, analysis and sharing of data is weak	Institutional capacity improved but quality of data still poor and weak linkage with planning	Data collection, analysis and sharing substantially improved and effectively supports sector planning

C. Sector Issues and Constraints	(i)	Need for effective policy and institutional environment for market-based agricultural growth and sustainable management of natural resources; and need for institutional capacity to implement reforms
	(ii)	Prevalence of low-value added, subsistence-oriented, mono-cropping rice farming systems (weak back- and forward linkages)
	(iii)	Inadequate access to and harmonized/integrated sustainable management of natural resources (e.g., land, water, fishing grounds, forests, aquatic ecosystems)
	(iv)	Inadequate access to effective rural financial services
	(v)	Weak farmer and community organizations unable to raise marketable surpluses or manage natural resources in a sustainable manner
	(vi)	Weak capacity and inadequate decentralization of agricultural institutions (e.g. research-extension linkage) and natural resources management institutions (e.g. management of water-related infrastructure)

D. Actions, Milestones, and Investments	By Issue	Schedule	By Agency (\$ million)		
			ADB	Others/ External	Gov't
Agricultural Policy and Institutions					
Agriculture Sector Development Program (Loan 2022)	Develop an institutional framework that promotes a private sector-based, market-oriented agriculture sector	2004–2006	25.0		
Supporting Policy and Institutional Reforms in the Agriculture Sector (ADTA 4228)	Strengthen MAFF and national research capacity, support to divestment of state-owned enterprises	2004–2007	1.0		0.18
Strengthening National Program Budgeting for the Agriculture Sector (ADTA)	Strengthen institutional capacity at MAFF in program budgeting at national and provincial levels	2005–2006	0.25		0.05
Formulating a Master Plan for National Agricultural Research (ADTA)	Provide strategic direction and identify priority research objectives	2004–2005	0.3		0.06
Capacity Strengthening in Advanced Agricultural Science and Technology in the GMS (GMS, RETA)	Create awareness and carry out training in biotechnology and food safety issues	2005–2007	1.0		GMS: 0.2
Action Plan for Gender Mainstreaming in the Agriculture Sector (ADTA)	Promote women's participation in market-based agricultural production through gender-responsive institutions and gender-equal access to agricultural support services	2005–2006	0.3		0.98
Capacity Building for the Inland Fisheries Research and Development Institute II (ADTA)	Build capacity for effective and relevant applied research	2005	0.3		
Enabling Activities to Implement the Stockholm Convention on Persistent Organic Pollutants (ADTA)	Develop a national implementation plan and build capacity for protection from organic pollutants, with special attention to a pesticides regulatory framework	2007	0.3		
Production and Marketing					
Agriculture Sector Development Project (Loan 2023)	Improve agricultural services for farmers and agro-industries in 4 provinces	2004–2008	4.7		1.18
Improving the Livelihood of Poor Farmers in Southern Cambodia (Grant JFPR; TA 9027)	Enable poor and vulnerable groups of farmers to benefit from improved agricultural services	2004–2008	1.8		

Agriculture Sector Development Support (PPTA)	Improve agricultural services (e.g., inputs, technology) at the local level and increase competitiveness of agricultural and agro-based products in domestic and international markets	2007	0.8		
Capacity Building for Promoting Sustainable Agricultural Development in the GMS (GMS; RETA)	Improve capacity of agricultural practitioners and farmers in production and marketing of non-rice food products	2004–2006	0.8		
Improving Poor Farmers' Livelihoods through Post-Harvest technology (GMS; Grant JFPR)	Reducing post-harvest losses through capacity building of intermediaries; targeting poor farmers	2005	0.75		
Improving Poor Farmers' Livelihoods through Rice Information Technology (GMS; Grant JFICT)	Reducing post-harvest losses through capacity building of intermediaries; targeting poor farmers	2005	1.0	IRRI: 0.15	GMS: 0.1
Transboundary Animal Disease (TAD) Control in the GMS (GMS, RETA)	Increase incomes of poor livestock farmers by developing a regional cooperation framework and implementing TAD control measures	2005–2009	2.0	FAO: 1.21	GMS: 0.19
Inland Fisheries Fish Processing Enterprise Development (PPTA)	Explore the untapped economic and employment generation potential of small-scale fish processing industries	2007	0.8		
Study of Inland Aquatic Resources Trade Patterns (TA)	Improve trade policies for poverty alleviation	2007	0.15		
Enhancing the Role of Women in Inland Fisheries (TA)	Identify ways to increase contribution of women to inland fisheries through improved access to human, social, and financial capital	2007	0.15		
Access to Land					
Implementation of Land Legislation – Phase II (TA 4181)	Drafting priority laws and implementing regulations; capacity building on legal and land matters and increase people's access to mechanisms to realize their rights under the law	2003–2005	0.6		0.11
Access to Water/Irrigation					
Stung Chinit Irrigation and Rural Infrastructure (Loan 1753)	Improve quality of life through provision of sustainable irrigation, agricultural extension, and rural infrastructure	2001–2006	16.0	AFD: 2.6	4.8
Northwest Irrigation Sector Project (Loan 2035)	Upgrade small- and medium-scale irrigation schemes applying an IWRM approach in a river basin context incl. empowerment of water user communities and agricultural extension measures; institutional capacity building	2004–2010	18.0	AFD: 3.7	6.9
Community Self-reliance and Flood Risk Reduction in the Tonle Sap Basin (ADTA)	To make disaster preparedness efforts more effective, paying special attention to the impact of flooding on women and girls	2004	0.3		
Flood Management (GMS: CAM/LAO/VIE, PPTA)	Prepare flood management loan by integrating country-specific flood management measures	2005	1.0	2.70	
Flood Management (GMS: CAM/LAO/VIE, Loan)	Reduce negative impacts of flood through investment projects in CAM, LAO and VIE	2006	85.0		GMS:26.8
Tonle Sap Watershed Management (PPTA)	Conservation and sustainable management of native vegetation in the watershed of the Tonle Sap to reduce land degradation, increase income and well-being, and reduce vulnerability	2006	0.8		
Irrigation and Water Resource	Evaluate ADB irrigation sector interventions	2006	0.5		

Management Sector Development (PPTA)	and prepare for a new sector project				
Irrigation Sector Development Project (Loan)	Upgrade irrigation schemes based on ADB irrigation sector interventions' experience and continue institutional support	2008	25.0	TBD	TBD
Rural Finance					
Rural Credit and Savings Support (Loan 1741)	Develop effective financial services in the rural areas which will provide poor households with better access to rural finance	2000–2005	20.0		RDB: 2.72 LFI: 3.84
Area Development					
Northwest Rural Development Project (Loan 1862)	Reduce rural poverty through rehabilitation of physical infrastructure (including roads) and support to community development	2003–2007	27.2		7.4 Beneficiaries: 0.13
Tonle Sap Environmental Management Project (Loan 1939)	To enhance systems and develop the capacity for natural resource management coordination and planning, community-based natural resource management, and biodiversity conservation in the TSBR	2002–2007	10.9	GEF: 3.2 UNDP: 0.6 3	3.9
Establishment of the Tonle Sap Basin Management Organization II, III, IV (TA)	Improve institutional and organizational arrangements for natural resource management	2004–2006	0.9		
Influence of Built Structures on the Fisheries of the Tonle Sap (TA)	Influence of built structures on the lake's hydrological regime and people's livelihoods	2005	0.3		
Tonle Sap Sustainable Livelihoods Project (Loan)	Sustain and improve livelihoods in the flooded area of the Tonle Sap	2006–2010	15.0		
Tonle Sap Low land Stabilization Project (Loan)	Manage natural resources in and around the transition area of the TSBR, with special attention to agriculture, forestry, and irrigation in support of sustainable livelihoods	2007/8	20.0		
<p>ADB = Asian Development Bank; AFTA = advisory technical assistance; AFD = Agence Française de Développement; CAM = Cambodia;</p> <p>FAO = Food and Agriculture Organization; GDP = gross domestic product;</p> <p>GEF = Global Environment Facility; GMS = Greater Mekong Subregion; Gov't = government;</p> <p>IRRI = International Rice Research Institute IWRM = Integrated Water Resources Management;</p> <p>JFICT = Japan Fund for Information and Communication Technology;</p> <p>JFPR = Japan Fund for Poverty Reduction; LAO = Lao People's Democratic Republic; LFI = Licensed Finance Institution;</p> <p>MAFF = Ministry of Agriculture, Forestry and Fisheries; PPTA = project preparatory technical assistance; RDB = Rural Development Bank;</p> <p>RETA = regional technical assistance;</p> <p>SEDP II = second socio-economic development plan; TA = technical assistance;</p> <p>TAD = transboundary animal disease; TBD = to be determined; TSBR = Tonle Sap Biosphere Reserve; UNDP = United Nations Development Program; VIE = Viet Nam.</p>					

Source : Country Strategy and Program, Cambodia 2005-2009, ADB

表-C バッタバン州の灌漑システム

No.	Irrigation System	Command Area Dry Season (ha)	Command Area Wet Season (ha)	Remarks
A	Monkul Borey River			
1	Tuol Torl Reservoir	---	---	
2	Bo vel Irrigation System	35,000	500	
3	Prey Khpors Dam	1,200	100	
4	Ni Kum Fllod Protection	300	---	
B	Kamping Puoy Hydraulic System			
5	Odaun Pov Canal	13,500	5,500	
6	Kamping Puoy Dike Rehabilitation Project	13,500	5,500	
7	Thvea Pram Bey Irrigation System	1,500	500	
8	Beung Krasa Irrigation System	3,000	1,000	
9	Bra Lay An Lorng Run Irrigation System	1,500	500	
10	O Taky Irrigation System	1,100	200	
11	Ang Pheas Irrigation System	---	3,200	
12	Kamping Puoy Pov Drainage	4,500	---	
13	Canal No.-3 of Irrigation System	3,200	1,000	
C	Steung Sang Ke			
14	Phum Leav Multi-purpose Project	87,000	---	
15	Kang Hot Dam	68,000	---	
16	Kang Hot Irrigation System	68,000	---	
17	Sala Ta An Dam	3,500	13,000	
18	Sala Ta An Irrigation System	3,500	13,000	
19	Stwung Chas Hydraulic System	1,500	8,000	
20	O Sra Lav Hydraulic System	4,500	1,200	
21	Flood Protection Dam	---	---	
22	No Rea Canal	1,500	8,000	
D	Steung Moug Russey			
23	Basak Reservoir	35,000	---	
24	Prek Chik Structure	25,000	1,000	
25	Pra Lay Prek Chik Irrigation System	25,000	1,000	
26	Ang Duon Try Hydraulic System	1,200	4,500	
E				
27	O Keas Kralor Hydraulic System	1,500	---	
28	Ang Chok Hydraulic System	1,500	---	
29	Rotanak Mondol District Hydraulic System	1,500	---	
F	Battambang Town Project			
30	Slope of Stream Protection Project	---	---	
31	Sewage System Project	---	---	
G	Groundwater Project	---	---	
32	Koas Kralor District	---	---	
33	Moug Russey District	---	---	
34	Sang Ke District	---	---	

Source : List of Sub-Project, Provincial Department of Water resources and Meteorology, Battambang

表-D プルサット州灌漑システム

No.	Project Name	Location		Land Use		Result	Estimation			Remarks	
		District	Commune	Wet season	Dry season		Total	US\$/ha	US\$/ben		---
I.	Pursat river										
1	Cha Rek Irrigation System	Kan Deang		6,700	1,000	26,750	1,525,750	228	57	2	
2	Domnak Ampit Irrigation System	Sampou Meas	Lalak Sor	13,000	550	52,023	2,015,000	155	39	1	
3	Wat Luong Irrigation System	-do-	-do-	7,300	100	25,110	1,131,500	155	45	6	
4	Tang Luoeh Basin	Kravanh Moun Tcur		Hydro-power 3,500 kV		240,441	2,640	---	11	5	Project in 1970
5	Sam Ruong Spillway	-do-	Samrang	Diversion dam		355,013	2,100,000	---	6	36	Project in 1970
6	Som Congret Dam	-do-	-do-	Hydro-power 17,000 kV		355,013	6,860,000	---	19	35	Project in 1970
7	Kbal Hong Irrigation System	Kandeang	Veal	2,000	130	41,428	1,668,000	120	40	17	
8	Chheur Tuak Irrigation System	Kavang	Sanre	1,200	60	---	209,761	---	---	7	
9	O Roka Irrigation System	Sompovemeas	Chamrenpal	1,970	70	4,550	161,540	82	36	8	
10	Bra Theav Spillway	-do-	-do-	400	30	6,050	60,000	---	---	34	
11	Phreah Ponley Irrigation System	Kvawang	Ptarong	1,000	50	13,200	190,000	190	14	10	
12	Damnak Ehhe Kram Irrigation System	-do-	Somrang	7,000	500	15,600	1,460,000	208	94	21	
13	Lalak Sor Stakon Irrigation System	Sampou Meas	Laklak Sor	350	350	4,427	65,900	188	15	45	
14	Kan Deang Stakon Irrigation System	Kandeang	Kandeang	700	150	3,250	65,100	93	20	23	
15	Tachap Basin	Banam	Banam Pur	5,340	---	13,247	85,000	---	---	12	
16	Fllod Protection System	Sampouneas	Laklak Sor	---	---	10,830	216,600	---	20	11	
II.	Tlea M river										
17	Tlea M Irrigation System	Kra Kor	Kantoutlak	1,700	30	11,258	204,400	12	18	4	
18	Tram Mneas Basin	-do-	Tnamgum	1,200	60	3,000	150,000	---	50	15	

19	Bak Nak Irrigation System	-do-	Chhetom	1,750	50	4,711	350,000	200	74	3	
20	Kamponglor Irrigation System	-do-	Konpong Pou	300	60	2,372	70,800	236	30	31	
21	Tompoang Kley Irrigation System	-do-	Kantoutlak	100	---	1,560	51,400	514	33	43	
22	Cham Ka Kroch Irrigation System	-do-	Svay Sor	300	---	1,750	65,600	218	37	28	
III.	Kra Kor river										
23	Salapong Irrigation System	Kra Kor	Kbal Trak	350	---	4,873	50,700	145	10	16	
24	Kochnop Irrigation System	-do-	-do-	1,000	---	4,500	67,450	67	15	14	
25	Banteay Krang Irrigation System	-do-	Onlongranat	600	---	1,871	63,600	106	34	41	
26	Kla Kra Peu Irrigation System	-do-	-do-	450	---	1,989	49,600	110	25	26	
IV.	Svay Don Keo river										
27	Kompong Irrigation System	Bakan	Svay Don Keo	1,500	---	4,580	101,696	68	22	18	World Bnak project
28	Baneam Brayal Irrigation System	-do-	O Ta Pong	300	---	6,602	69,900	233	11	19	
29	Raneam Chlech Basin	-do-	Snam Pr	472	90	6,520	55,000	---	---	20	
30	On Long Svay Irrigation System	-do-	Rom Lech	220	---	2,772	63,498	289	23	38	
V.	Beng Kla river										
31	Wat Leap Irrigation System	Ba Kbun	Metuk	335	170	2,524	43,500	130	30	43	
32	Koh Ksach Irrigation System	-do-	-do-	100	30	1,465	31,698	317	22	30	
33	Kroch Sach Irrigation System	-do-	Khna Torteng	132	---	1,887	30,800	233	16	32	
34	Kon Ter Basin	-do-	Metuk	382,73	73	2,940	97,310	255	33	42	
35	Wat Chrey Irrigation System	-do-	Khna Lake	400	---	2,131	102,000	255	48	9	
VI.	O Srang river										
36	Prey Ngey Irrigation System	Sam Pou Mea	Prey Ng Ey	1,200	---	5,124	53,000	44	10	22	
37	Knang Pospoul Basin	-do-	Prey Ng Ey	600	---	---	60,000	---	---	25	

38	Keo Mney Irrigation System	Kandeang	Banteau Dey	300	---	853	52,800	176	62	27	
VII.	O Nak Taro river										
39	Oamnak Kranh Irrigation System	Wrakorj Sna	On sa	450	---	1,513	74,400	165	49	24	
40	Damnak Kranh Irrigation System	-do-	-do-	400	---	950	61,400	154	65	29	
VIII.	O Ksachl river										
41	Ang Konh Irrigation System	Wrakorj Sna	On sa Chambak	1,200	40	3,063	60,000	50	20	17	
IX.	O Kbal river										
42	Kanseng Wrakorj Irrigation System	Wrakorj Sna	On sa Chambak	1,000	---	1,390	60,700	61	44	33	
X.	Various Water Resources										
43	Toul Kou Basin	Som Pou Neas	Koh Chom	722	90	477	80,000	97	147	13	
44	Beng Kou Basin	Ba Kan	Ota Pang	250	30	450	65,000	---	---	40	
45	On Long Koch	-do-	Beng Kna	700	100	---	60,000	---	---	39	
46	Kom Peng Basin	---	Krangal	500	100	3,505	100,000	200	29	44	
XI.	Peam river										
47	Peam Dam	Kravam					2,040,000			46	
XII.	Sang Key river										
48	Santre Earth Dam	Kravam					2,600,000			47	
XIII.	Groundwater										
49	Groundwater Development	Sam Pou mea								48	
50	-do-	Kandeang								49	
51	-do-	Kro Koh								50	
52	-do-	Baleam								51	
53	-do-	Kravam								52	
54	-do-	Veal Veng								53	
	Total			65,873	3,913		27,540,403				

Source : Ministry of Water Resources and Meteorology (July 17, 2002)

表-E コンポン・チュナム州の主要灌漑システム

No.	Irrigation System	Commune	Command Area Wet Season (ha)	Command Area Dry Season (ha)	Remarks
I.	Kampong Chhnang District				
1	Tnol Ampil	Kampong Chhnang	---	150/320	
II.	Naili Maiya				
1	Salong	Toeuk Huot		50/300	
2	Trapaeng	Kouk Banteay		/600	
3	Traseik Chrum Station	Kouk Banteay		0/450	
4	Korng Meas Station	Kouk Banteay		180/320	
5	Tumnup Kvap	Prosmeap	0/100		
6	Ta Bang	Pongrou	0/250		
7	Trapaeng Pou	Pongrou	50/50		
8	Mapheyi Usaphea	Svay Chrum		0/150	
9	Boeung Buan Mum	Svay Chrum		150/218	
10	Tamrek	Svay Chrum		150/180	
11	Thuu Koul	Banteay Preal	0/400		
12	Prapoan Prey Moan	Rolea ph-ear	495/944		
	Total		545/1,744	780/1,868	
III.	Toeuk Phos District				
1	Ta Pech	Akphiwat	0/100		
2	Anlung Teatein	Akphiwat	150/170		
3	Svay Cheik	Chaong Maong	330/660	6	
4	Kseitor (Reservoir)	Chaong Maong	250/300	0/45	
5	Ehi Prorng	Klong Popouk	1,500/2,185	0/50	
6	Ehong Rong	Klong Popouk	75/160	0/40	
7	Tumnup Komar	Klong Popouk	0/130	0	
8	Pak Ben	Tuol Kpos	420/621	0	
9	Ehak Teum	Tuol Kpos	100/430	0/75	
10	Antreut	Tuol Kpos	0/350	0	
11	O Spean	Tuol Kpos	45/50	0	
12	Rolung	Tuol Kpos	0/200	0/5	
13	Trapaeng Klong	Kbal Toeuk	0/1,500	0/28	
14	Ta Neam	Kbal Toeuk	50/134	0	
15	Chamka Tabou	Kbal Toeuk	0/170	0	
16	Teal Samras	Kbal Toeuk	0/135	0	
17	Tang Krasang	Trapaeng Krasang	1,680/1,680	50/140	
18	Kandoal Chrum	Trapaeng Krasang	90/790	0/15	
19	Ta Mom	Trapaeng Krasang	0/150	0	
20	Trapaeng Mluu	Krang Skea	100/120	0	
21	Steung Chrang	Krang Skea	420/450	0/20	
22	Phnum Domreiy	Krang Skea	0/250	0	
23	O Kanh Chram	Krang Skea	0/155	0	
	Total		5,210/10,890	50/424	
IV.	Boribo District				
1	O Rolus	Pich Changwa	0/1,050		
2	O Chanlos	Anchamh Rung	50/350		
3	Ar Chang	Anchamh Rung	60/5,292	0/238	
4	Kumreap	Trapaeng Chan	300/400		
5	O Reussey	Meil	0/45		
6	Bantry Tlouk	Psar	120/120	543/800	
	Total		530/7,257	543/1,038	

V.	Chulkiri District			
1	Takoy	Prey Kri		676/1,021
2	Tram Krabey	Prey Kri		304/1,000
3	Reussey Dankouch	Chulsa		97/120
4	Trey Pou	Chulsa		204
5	Prey Khmouch	Chulsa		85/115
6	Kat Kbaal	Chulsa		86/125
7	Veal Sra Nge Loeu	Peam Ehhkok		78/115
8	Anlung Meitreiy	Peam Ehhkok		47/80
9	Kbaal Domreiy	Kampong Ous		44/81
10	Traseik Chrun	Kampong Ous		57/80
11	Dei Krahorm	Koh Thkov		215/450
12	Kla Krab	Koh Thkov		96/165
13	Smaunh	Koh Thkov		52/85
14	Samaki	Koh Thkov		84/130
15	Rom Cheik	Koh Thkov		73/120
16	Raeng Kanteil	Koh Thkov		103/192
17	Kampong Chen	Koh Thkov		94/185
18	Boeung Krachabu	Koh Thkov		98/190
19	Kuu	Koh Thkov		190/250
20	Tumpear	Koh Thkov		107/155
	Total			2,678/4,424
VI.	Samaki Meanchey District			
1	Kdol	Peam	100/315	0/15
2	Ta vaiy	Svay Chuk	150/300	0/50
3	O Lvea	Thbeng Kpos	110/500	0/55
4	Thmor Puay	Peam	130/300	0/100
5	Yutsas	Svay	100/650	
6	Boeung Khna	Khna Chhma	300/1,200	0/600
7	Trapeung Sara-nghe	Khna Chhma	300/1,250	
8	Chumteav Chreing	Krang Lvea	320/500	0/100
9	Anloun Kreul	Tlouk Vean	30/300	
10	Traseik Kaung	Peam	150/250	0/60
11	Thmor Kamboa	Svay Chuk	100/150	0/30
12	Thuu Bakkor	Chna Chhma	100/125	0/15
13	Khna Kandal	Khna Chhma	30/250	50
14	Chamkar Cham	Khna Chhma	20/150	
15	Toul Klong	Khna Chhma	20/150	0/20
16	Anloun Priing	Khna Chhma	40/170	0/30
17	Anloun Krabao	Khna Chhma	30/150	0/20
18	Anloun Tra Kaav	Khna Chhma	20/150	0/10
19	Dach Samrek	Seitheiy	10/150	
20	O Wat Seitheiy	Seitheiy	18/140	0/10
	Total		2,078/12,230	0/1,165
VII.	Kampong Tralach District			
1	Anloun Puttrea	---	200/210	
2	Ta In	---		350/450
3	Chumneak Mon	---		70/70
4	Boeung Lang	---		190/216
5	Prek Sorlai	---		67/82
6	Kanleing Beiy	---		240/270
7	Boeung Kul	---		50/55
8	Prek Kandal	---		50/78
9	Thnorm	---		240/250
10	Sbor Touch	---	0/100	

11	Sbor Thom	---	0/50	
12	Anlounng Lorig	---	0/250	
13	Anlounng Tunleup	---	0/70	
14	Tumnup Komar	---		47/52
15	Ro Nhiev	---		20/55
16	Cheu Teal	---	0/160	
17	Tram Plouk	---	0/150	
18	Choi Toeuk	---	0/250	
19	Kanleing Kranh	---		60/60
20	Ta Meav	---		50/50
21	Ta Oung	---		80/100
22	Chan Keak	---		80/110
23	Ehroloung Mao	---	70/70	
24	O Ta Som	---	0/170	
25	O Krum	---	0/600	
26	Thmor Angkam	---	0/270	
27	Boeung Toteung	---		60/65
28	Kob Seis	---	1,200/1,200	
	Total		1,470/3,550	1,644/1,963
VIII.	Kampong Leng District			
1	Bror Yab	Pou	0	13/300
2	Ta But	Pou	20/50	0
3	Thmor Puak	Tra-ngel	0	193/300
4	bak Dav	Tra-ngel	30/200	0
5	Tumnup Kapoeu	Tra-ngel	20/50	0
6	Tumnup Srok	Svay Rompear	0	80/250
7	Ba Danh	Svay Rompear	0	75/170
8	Kanthou	Svay Rompear	0	0/70
9	Phnum Breich	Svay Rompear	45/150	0
10	O Ta Bun	Svay Rompear	35/50	0
11	Boeung Teup	Dar	0	25/50
12	P Trav	Dar	0	15/600
13	Pheak Nys	Dar	20/100	0
14	Ta So	Dar	15/100	0
15	Matthmor	Chror Nouk		70/170
16	Phnum Koung	Chror Nouk	35/50	0
17	Sdeiy Koang	Kampong Haov	0	80/150
18	Ksoa	Kampong Haov	0	250/350
19	Doun Uiet	Kampong Haov	0	35/100
20	Poutanoun	Kampong Haov	0	200/265
21	Boeung Kloung	Brorlaiy Meas	0	35/100
22	Boeung Prang	samrong Sen	0	35/150
	Total		220/750	1,106/3,025
	Total		10,053/36,421	6,951/14,227

Source : Provincial Department of Water resources and Meteorology, Kampong Chhnang

表-F コンボン・チュナン District 別灌漑面積

No.	Irrigation System	Command Area (ha)		Present condition of irrigation (Irrigable area by percent)		Remarks
		Wet	Dry	Wet	Dry	
1.	Biribo District	530/	7,257	543/	1,038	6 systems
2.	Chulkiri District	0/	0	2,678/	4,424	20 systems
3.	Samaki Meanchey District	2,078/	12,230	0/	1,165	20 systems
4.	Kampong Tralach District	1,470/	3,550	1,644/	1,963	28 systems
5.	Kampong Leaeng District	220/	750	1,106/	3,025	22 systems
6.	Kampong Chhnang District	0/	0	150/	320	1 system
7.	Rolea B'ier District	545/	1,744	780/	1,868	12 systems
8.	Tuek Phos District	5,210/	10,890	50/	424	23 systems
	Total	10,053	36,421	6,951/	14,227	132 systems

表-G コンボン・スプー District 別灌漑面積 (調査地域内)

No.	Irrigation System	Command Area (ha)		Present condition of irrigation (Irrigable area by percent)		Remarks
		Wet	Dry	Wet	Dry	
1.	Tpong District	373/	3,432	0/	110	25 systems
2.	Oral District	948/	1,163	10/	255	33 systems
3.	Odong District	1,430/	7,115	0/	500	12 systems
	Total	2,751/	11,710	10/	865	

Source: PDOWRAM, MOWRAM

表-H カンダール District 別灌漑面積 (調査地域内)

No.	Irrigation System	Command Area (ha)				Remarks
		Wet		Dry		
1.	Ponhea Lueu District	0/	4,600	445/	5,782	35 systems
2.	Angk Snuol District*	41/	10,950	11/	100	941 ha*
	Total	41/	15,550	456/	5,882	

Source: : PDOWRAM, MOWRAM

* The Agro Ecosystem Analysis Project (AusAID)

表-I 降水量觀測所一覽表 (水資源氣象省)

No.	Station No.	Location	Latitude	Longitude
1	130314	Bac Prea		
2	110516	Srey Santhor		
3	120514	Skoun		
4	120519	Krouch Chmar		
5	120610	Tomproong		
6	130528	Stung Treoung		
7	120427	Tpaung		
8	100417	Chumkiri		
9	620101	Kompong Thmar		
10	110522	Kompong Trabek		
11	130704	Bor Keo		
12	440103	Andoung Meas		
13	130302	Kralanh (Khum)		
14	440101	Bankompuon		
15	140305	Samroong Chongkal		
16	130329	Srok Pouk		
17	100420	Don Keo	10° 59' 31"	104° 47' 28"
18	110518	Peam Raing (Leuk Dek)	11° 7' 12"	105° 10' 48"
19	110520	Bar Phnom	11° 15' 0"	105° 24' 0"
20	110524	Peam Ror	11° 18' 36"	105° 16' 48"
21	110523	Mesaing	11° 19' 48"	105° 32' 60"
22	110521	Kampong Leav	11° 29' 24"	105° 20' 24"
23	110525	Pear Raing	11° 39' 36"	105° 13' 48"
24	110439	Prek Anchagn	11° 45' 0"	104° 57' 36"
25	110430	Samaki Meachey	11° 52' 55"	104° 36' 43"
26	130506	Seam Bork	13° 23' 24"	105° 56' 20"
27	130507	Tala Borivat	13° 32' 46"	105° 57' 18"
28	130605	Sesan	13° 33' 7"	106° 5' 46"
29	130705	O Chum	13° 47' 42"	107° 0' 58"
30	100406	Angtassom	10° 0' 0"	104° 40' 60"
31	100403	Kirivong	10° 36' 0"	104° 43' 60"
32	100401	Kampot	10° 37' 0"	104° 13' 0"
33	100404	Bokor/ Ferme	10° 37' 0"	104° 4' 0"
34	100303	Sihanouk Villa	10° 37' 60"	103° 28' 60"
35	100416	Bonteay Meas	10° 40' 0"	104° 54' 0"
36	100418	Dornng Tong	10° 42' 0"	104° 27' 0"
37	100412	Tanii	10° 46' 0"	104° 39' 0"
38	100421	Koh Andet	10° 47' 30"	104° 57' 0"
39	100419	Angkor Borey	10° 56' 30"	104° 58' 30"
40	100408	Takeo (Villa)	10° 58' 60"	104° 47' 60"
41	110508	Peam Chor	11° 1' 0"	105° 13' 0"
42	110503	Svay Rieng	11° 4' 60"	105° 46' 60"
43	110407	Slakou	11° 4' 60"	104° 43' 0"
44	110401	Chhouk	11° 5' 60"	104° 40' 60"
45	110410	Bat Rocar	11° 7' 60"	104° 46' 60"
46	110431	Baset	11° 9' 3"	104° 32' 26"
47	110446	Prey Lvear	11° 10' 0"	104° 57' 0"
48	110436	Prey Dop	11° 13' 17"	104° 33' 23"
49	110437	Sdock	11° 15' 36"	104° 31' 0"
50	110432	Kong Pisey	11° 17' 54"	104° 37' 54"
51	110421	Kirirom	11° 19' 0"	104° 3' 20"
52	110416	Sre Khlong	11° 19' 36"	104° 17' 26"

53	110448	Chambak	11° 20' 30"	104° 52' 60"
54	110404	Kompong Speu	11° 20' 38"	104° 3' 20"
55	110519	Saang	11° 21' 0"	105° 15' 0"
56	110512	Kamchay Mea	11° 21' 35"	105° 24' 0"
57	110403	Tonle Baty	11° 22' 27"	104° 31' 34"
58	110419	Kraing Amplil	11° 22' 27"	104° 31' 34"
59	110413	Phnom Srouch	11° 23' 3"	104° 22' 46"
60	110441	Samroong	11° 24' 0"	105° 28' 60"
61	110513	kanchreach	11° 24' 36"	105° 19' 47"
62	110438	Kampong Toul	11° 25' 30"	104° 30' 0"
63	110409	Takhmao	11° 25' 60"	104° 58' 0"
64	110514	Prey Veng	11° 28' 0"	105° 9' 0"
65	640103	Peam Kley	11° 28' 13"	104° 22' 8"
66	110423	Thnal Tetung	11° 28' 60"	104° 40' 0"
67	110402	Kompong Kantout	11° 31' 60"	104° 43' 60"
68	110408	Petit (Takeo)	11° 31' 60"	104° 55' 0"
69	110434	O Taroat	11° 32' 11"	104° 25' 25"
70	110425	Pochentong	11° 33' 0"	104° 55' 0"
71	110406	Oprek Leap	11° 34' 60"	104° 55' 0"
72	110426	Chruy Changvar	11° 34' 60"	104° 55' 60"
73	110411	Phnom Penh (Ville)	11° 36' 0"	104° 49' 60"
74	110505	Snail Pol	11° 37' 60"	105° 13' 0"
75	110303	Koh Kong (Ville)	11° 37' 60"	103° 0' 0"
76	110433	Oral	11° 41' 15"	104° 8' 16"
77	110511	Prek Tameak	11° 45' 0"	105° 1' 60"
78	110607	Kantroy	11° 45' 0"	106° 16' 60"
79	110606	Chalang	11° 46' 60"	106° 7' 0"
80	110415	Oudong	11° 46' 60"	104° 43' 60"
81	110515	Pongnear Krek	11° 48' 16"	105° 53' 6"
82	110445	Trapeang Chor	11° 49' 2"	104° 8' 13"
83	110605	Mimot	11° 50' 22"	106° 11' 24"
84	110429	Boeung Leach	11° 53' 37"	104° 41' 17"
85	110504	Chup	11° 54' 0"	105° 35' 60"
86	110405	Kompong Tralach	11° 54' 0"	104° 46' 0"
87	110428	Tbong Khmum	11° 55' 0"	105° 39' 3"
88	110506	Peam Chikang	11° 55' 60"	105° 15' 0"
89	110517	Sre Seam	11° 56' 50"	105° 33' 29"
90	110414	Tuol Khpos	11° 57' 0"	104° 22' 60"
91	110608	Kang Meas	11° 57' 2"	105° 16' 0"
92	110427	Batheay	11° 59' 15"	104° 56' 52"
93	120504	Kompong Cham	12° 0' 7"	105° 27' 0"
94	120408	Pha Ao	12° 1' 60"	104° 58' 60"
95	120411	Boeung Por	12° 2' 34"	104° 42' 0"
96	120511	Prey Totung	12° 3' 0"	105° 16' 0"
97	120420	Tuk Phos	12° 3' 17"	104° 31' 42"
98	120421	Prey Chhor	12° 3' 46"	105° 15' 29"
99	120407	Sdoc Ach Romes	12° 4' 0"	104° 31' 60"
100	120606	Snoul	12° 4' 29"	106° 25' 32"
101	120414	Doun Pean	12° 5' 16"	104° 48' 52"
102	120419	Krang Tamoung	12° 15' 40"	104° 34' 26"
103	120510	Chamcar Krauch	12° 12' 0"	105° 19' 59"
104	120604	Prek Chhlong	12° 13' 0"	106° 25' 60"
105	120416	Rolear Phear	12° 13' 3"	104° 40' 28"
106	120401	Kompong Chhnang	12° 14' 28"	104° 40' 0"
107	120502	Stung Trang	12° 15' 0"	105° 32' 24"

108	120506	Prek kak	12° 15' 0"	105° 31' 60"
109	120517	Taing Kok	12° 15' 7"	105° 7' 46"
110	120508	Chhlong	12° 15' 42"	105° 58' 0"
111	120415	Kompong Leang	12° 16' 0"	104° 43' 60"
112	120418	Pong Ro	12° 16' 28"	104° 35' 33"
113	120520	Cham Bac	12° 16' 52"	105° 49' 38"
114	120607	Svay Chras	12° 16' 60"	106° 16' 60"
115	120313	Peam	12° 17' 11"	103° 43' 20"
116	120612	Svay Chek	12° 18' 4"	106° 18' 19"
117	120509	Chamcar Leur	12° 18' 14"	105° 17' 4"
118	120406	Bamnak	12° 19' 0"	104° 10' 0"
119	120513	Prek Prasap	12° 19' 8"	106° 1' 60"
120	120304	Dap Bat	12° 20' 33"	103° 47' 13"
121	120306	Leach	12° 21' 0"	103° 46' 0"
122	120301	Tuol Krous	12° 21' 39"	104° 31' 34"
123	120507	Chamcar Andong	12° 22' 0"	105° 13' 0"
124	120703	P Raing	12° 22' 60"	107° 27' 0"
125	120503	Baray	12° 24' 14"	105° 5' 22"
126	120515	Kompong Seam	12° 25' 0"	105° 26' 34"
127	120417	Ponley	12° 26' 35"	104° 28' 16"
128	120410	Boribo	12° 27' 0"	104° 28' 0"
129	120602	Peam Te	12° 27' 11"	106° 2' 15"
130	120611	Kantout	12° 28' 1"	106° 10' 33"
131	120603	Kratie	12° 29' 13"	106° 1' 27"
132	120702	Sen Monorom	12° 30' 0"	107° 13' 60"
133	120423	Stung Chinit	12° 30' 36"	105° 8' 47"
134	120320	Beoung Kantuot	12° 31' 0"	104° 5' 13"
135	120309	Talo	12° 31' 7"	103° 39' 32"
136	120403	Krakor	12° 31' 56"	104° 13' 2"
137	120302	Pursat	12° 33' 0"	103° 54' 0"
138	120518	Taing Krasng	12° 34' 15"	105° 3' 25"
139	130215	Samlot	12° 37' 46"	102° 51' 48"
140	120426	Beoung Khnar	12° 38' 7"	103° 45' 2"
141	120312	Kravanh	12° 40' 29"	103° 38' 51"
142	581102	Svay Don Keo	12° 40' 29"	103° 38' 51"
143	120404	Kompong Thom	12° 41' 10"	104° 54' 0"
144	120551	Wat Tanak	12° 41' 24"	105° 59' 25"
145	120205	Chamlong Kuoy	12° 42' 48"	102° 57' 35"
146	120303	Maung Russey	12° 46' 14"	103° 27' 0"
147	120505	Sambor	12° 46' 46"	105° 58' 0"
148	120425	Prey Pros	12° 47' 54"	104° 49' 44"
149	120213	Rattanak Mondol	12° 49' 0"	102° 37' 0"
150	120206	Treng	12° 50' 25"	102° 55' 13"
151	120608	Kbal Domrey	12° 50' 32"	106° 11' 21"
152	120202	Pailin	12° 51' 31"	102° 37' 5"
153	120311	Cheang Meanchey	12° 52' 37"	103° 6' 16"
154	120516	Prasat Sambo	12° 53' 8"	105° 4' 35"
155	130406	Tbeng (Sdau)	12° 53' 53"	102° 58' 38"
156	120402	Staung	12° 56' 53"	104° 34' 19"
157	130301	Banan	12° 57' 41"	103° 9' 13"
158	120305	Raing Kesey	12° 58' 0"	103° 15' 0"
159	120424	Kondal Chrass	12° 58' 34"	104° 42' 52"
160	120422	Prasat Balang	12° 58' 51"	104° 57' 31"
161	130318	Boeung raing	13° 3' 25"	103° 9' 34"
162	130211	Komping Pouy	13° 4' 49"	102° 59' 27"

163	130210	Komrieng	13° 5' 4"	102° 27' 42"
164	130305	Battambang	13° 5' 60"	103° 12' 0"
165	130505	Sadan	13° 5' 60"	105° 15' 0"
166	130405	Kompong Kdei	13° 7' 48"	104° 20' 51"
167	130604	O Krieng	13° 7' 60"	106° 10' 60"
168	130304	O Taky	13° 9' 15"	103° 7' 2"
169	130208	Bovel	13° 15' 8"	102° 52' 37"
170	130404	Damdek	13° 15' 20"	104° 7' 30"
171	130212	Roung Chrey	13° 16' 6"	102° 58' 14"
172	130319	Thmar Kol	13° 16' 8"	103° 1' 49"
173	130324	Phnom Kram	13° 17' 38"	103° 49' 2"
174	130503	Rovieng	13° 21' 0"	105° 7' 0"
175	130321	Prasat Bakong	13° 21' 16"	103° 59' 27"
176	130312	Kauk Patry	13° 22' 0"	103° 58' 60"
177	130325	Siem Reap	13° 22' 0"	103° 50' 60"
178	130313	Tuol Samraung	13° 23' 7"	103° 1' 49"
179	130306	Air Port/ Seam Reap	13° 25' 5"	103° 48' 27"
180	130323	Khum Lvear	13° 27' 49"	103° 42' 37"
181	130310	Angkor Watt	13° 29' 58"	103° 51' 6"
182	130603	Lumphat	13° 30' 0"	106° 58' 60"
183	130311	Sasar Sdam	13° 30' 22"	103° 37' 1"
184	130501	Stung Treng	13° 31' 0"	105° 58' 0"
185	130315	Mongkol Borey	13° 32' 12"	103° 1' 23"
186	130327	Svay Leu	13° 34' 0"	103° 15' 0"
187	130403	Phnom Koulen	13° 34' 48"	104° 7' 1"
188	130307	Kralanh	13° 36' 15"	103° 31' 23"
189	130202	Sisophon	13° 36' 52"	102° 58' 13"
190	130316	Pranet Preah	13° 37' 0"	103° 10' 60"
191	130209	O Chrov	13° 38' 34"	102° 35' 2"
192	130320	Angkor Chum	13° 41' 7"	103° 39' 33"
193	130602	Ban Lung	13° 43' 60"	106° 58' 0"
194	130308	Phnom Srok	13° 45' 0"	103° 20' 60"
195	130328	Varin	13° 46' 60"	103° 45' 0"
196	130205	Svay Chek	13° 48' 12"	102° 58' 20"
197	130326	Srey Snam	13° 50' 35"	103° 31' 23"
198	130317	Thmar Pouk	13° 56' 57"	103° 3' 5"
199	130309	Chong Kal	13° 57' 0"	103° 34' 60"
200	140602	Vocun Sai	14° 0' 0"	106° 46' 0"
201	140603	Seam Pang	14° 7' 60"	106° 22' 0"
202	130322	Banteay Srey	13° 35' 53"	103° 57' 55"
203	110435	Prey Pdao	11° 25' 4"	104° 7' 2"

Source : Ministry of Water Resources and Meteorology

表-J プレクト・ノット川流域降水量観測所

No.	Station Name	Equipment	Location (UTM)		District/village
			Latitude	Longitude	
1	Kirirom	Automatic	1,252,931	396,882	Phnom Sruoch
2	Wat Kdey Lvea	-do-	1,268,598	462,114	Samrongtong
3	Kong Pisey	-do-	1,247,922	459,627	Kong Pisey
4	Trapeang Chour	-do-	1,306,348	405,995	Aoral
5	Thpong	-do-	1,299,115	438,559	Thpong
6	Peam Khley	-do-	1,267,566	430,740	Phnom Sruoch
7	Phum Chum	-do-	1,294,020	383,194	Aoral
8	Roleang Chrey	-do-	1,264,829	439,962	Samrongtong
9	Prey Kaniech	-do-	1,262,000	409,200	Phnom Sruoch
10	O Kon Trom	-do-	1,238,125	417,515	Phnom Sruoch

Source : Interim Report

表-K 水位觀測所一覽表 (水資源氣象省)

No.	Code	Station Name	River	Longitude	Latitude	Water Level	Discharge	Province
1	520101	Mong Kolborey	Mongkol Borey	103 01' 08"	13 30' 13"	62-3, 97-01-May04	62-63	B. Meanchey
2	530101	Sisophon	Sisophon	102 59' 53"	13 36' 50"	62, 97-01-May04	62-63	B. Meanchey
3	201107	Bac Prea	Tri. Grate lake	103 23' 57"	13 18' 31"	62-3, 99-01-Jun03		Battambang
4	550103	Sre Ponleu	Stung Sangker	102 46' 47"	12 43' 51"	64-6	64-66	Battambang
5	550101	Treng	Stung Sangker	103 08' 20"	12 52' 02"	63-73, 99-01-02	63-73	Battambang
6	550102	Battambang	Stung Sangker	103 11' 54"	13 03' 21"	62-63, 72-3, 81-88, 97-01-05	62	Battambang
7	551101	Mong Russey	St. Dauntry	103 26' 22"	12 51' 10"	2001-Aug05		Battambang
8	019802	Kompong Cham	Mekong	105 23' 15"	11 54' 33"	60-74, 81-01-Sep05	64-74	K. Cham
9	590101	Boribo	Stung Boribo	104 22' 49"	12 20' 51"	98-01-Aug05		K. Chhnang
10	020103	Kg. Chhnang	Tonle Sap	104 41' 09"	12 15' 01"	24-72, 81-86, 88, 94-01-Aug05		K. Chhnang
11	020108	Snoc Trou	Tonle Sap	104 26' 43"	12 31' 16"	62-63		K. Chhnang
12	640101	Anlong Touk	St. Prek Thnot	104 26' 36"	11 26' 07"	63-70	63-70	K. Speu
13	640102	Thnous Loung/Kg. Speu	St. Prek Thnot	104 30' 36"	11 27' 22"	97-8, 01-Aug05		K. Speu
14	640103	PeamKhley-dam site	St. Prek Thnot	104 19' 47"	11 27' 16"	96-01-Aug05	96-97	K. Speu
15	600101	Kompong Chen	Stung Staung	104 34' 56"	12 56' 14"	62-3, 97-01-Aug05	62-63	K. Thom
16	610101	Kg. Thom	Stung Sen	104 52' 22"	12 42' 27"	61-70, 81-01-Aug05	61-70	K. Thom
17	610103	Panha Chi	Stung Sen	104 58' 18"	12 43' 02"	00-01-Aug05		K. Thom
18	620101	Kg. Thmar	Stung Chinit	105 07' 51"	12 30' 03"	62-3, 97-01-Aug05	62, 00	K. Thom
19	640104	Srok Sandan		105 04' 05"	12 51' 29"	2001-Aug05		K. Thom
20	100001	Tuk Chhoo	Kamchay	104 07' 48"	10 40' 58"	2001-04		Kampot
21	019806	Neak Luong	Mekong	105 17' 03"	11 15' 39"	26-73, 87-01-04	65-71	Kandal
22	019910	Prek Koy	Prek Koy	104 59' 17"	11 50' 19"			Kandal
23	019911	Spean Tras	Prek Koy	104 56' 12"	11 54' 04"			Kandal
24	020102	Prek Kdam	Tonle Sap	104 48' 14"	11 48' 47"	60-73, 86-01-04	60-73	Kandal
25	033402	Koh Khel	Bassac	105 02' 23"	11 14' 22"	90-01-05		Kandal
26	110409	Takhmao	Bassac	104 56' 56"	11 28' 54"	2000		Kandal
27	014901	Kratie	Mekong	105 59' 13"	12 14' 23"	34-9, 41-56, 58-74, 80-01-05	24-70	Kratie
28	019801	Chroy Chang Var	Mekong	104 56' 19"	11 34' 48"	60-74, 83-9, 90-01-05	60-74	Phnom Penh
29	020101	Phnom Penh Port	Tonle Sap	104 55' 22"	11 34' 29"	62-63, 66-74, 93-01-05	90	Phnom Penh
30	033401	Bassac Chaktomouk	Bassac	104 55' 58"	11 33' 05"	60-1, 64-74, 80-01-05	64-74	Phnom Penh
31	610102	Kompong Putrea	Stung Sen	105 15' 48"	13 13' 02"	65-9, 99-01-Feb04	65-69	Preah Vihear
32	660101	Prey Veng	Prek Tatam	105 20' 30"	11 16' 14"	2001, 2004		Prey Veng
33	670101	Stung Banam	St. Banam	105 18' 13"	11 24' 29"	87		Prey Veng
34	019901	Stung Slot	Stung Slot	105 17' 02"	11 19' 31"	87-88, 01-02		Prey Veng
35	660101	Kompong Trabek	St.Kg.Trabek	105 20' 30"	11 16' 14"	2001-02, 04		Prey Veng
36	580101	Pursat	Stung Pursat	104 03' 15"	12 39' 45"	62-3, 72-4	62-3	Pursat
37	580102	Taing Leach	Stung Pursat	103 36' 13"	12 17' 18"	65-9	65-69	Pursat
38	580103	Bac Trakoun	Pursat	103 45' 08"	12 21' 12"	94-7, 01-03, 05		Pursat
39	580104	Khum Viel	Stung Pursat	103 44' 36"	12 10' 46"	95-7, 99-01-05	95-97	Pursat
40	580105	Lo Lok Sar	Stung Pursat	103 46' 53"	12 11' 28"	94-7, 01-Jun05		Pursat
41	580106	Phum Kos	Pursat	103 52' 41"	12 13' 28"	94-7		Pursat
42	580110	Kbal hong(up)	Pursat	104 04' 47"	12 40' 50"	94-7, 01-05		Pursat
43	580120	Kbal hong(down)	Stung Pursat	104 01' 42"	12 38' 11"	95, 99-01-05		Pursat
44	580201	Peam	Pursat	103 42' 21"	12 09' 36"	2001-05		Pursat

45	580301	Prey Klong(down)	Stung Pursat	103 55' 36"	12 07' 06"	94-7, 01-05	94-7	Pursat
46	580302	Prey Klong(up)	Stung Santre	103 13' 44"	12 30' 44"	94-7,01		Pursat
47	580310	Sanlong(up)	Pursat	103 48' 48"	12 45' 27"	95-7		Pursat
48	580320	Sanlong(down)	Pursat	103 48' 57"	12 42' 49"	95-7		Pursat
49	580330	Svay At	Pursat	103 48' 57"	12 40' 30"	94-7		Pursat
50	581101	Campang	St. Dauntry	102 52' 43"	12 11' 08"	95-7		Pursat
51	581102	Svay Don Keo	Pursat	102 52' 44"	12 46' 13"	62-3, 65-97, 01-05	62-3	Pursat
52	581210	Kroch seuch (up)	St. Dauntry	103 26' 41"	12 46' 13"	94-6		Pursat
53	581220	Kroch seuch (down)	St. Dauntry	103 56' 13"	12 43' 45"	95-7		Pursat
54	581310	Wat Liep(down)	Pursat	102 59' 29"	12 36' 11"	95-7		Pursat
55	581410	Wat Liep(up)	Pursat	102 59' 29"	12 39' 16"	95-7		Pursat
56	583010	Tlea Maam (1)	Pursat	102 52' 33"	12 05' 46"	94-7		Pursat
57	583020	Thlea Maam(up)	Pursat	102 59' 20"	12 42' 12"	94-7	94-7	Pursat
58	020106	Kg. Luong	Tonle Sap	104 12' 52"	12 34' 30"	24-65, 96-01-05		Pursat
59	583101	Banteay Krang	St. Krakor	103 32' 34"	12 57' 57"	94-7	94-7	Pursat
60	440102	Vooun Sai	Sesan	106 48' 45"	13 57' 58"	65-9, 2000-01-Jul04	65-69	Rattanakiri
61	440103	Andaung Meas	Sesan	107 06' 25"	14 02' 49"	2000-01-Jul04	65	Rattanakiri
62	450101	Lumphat	Sre Pork	106 31' 42"	13 32' 53"	65-70, 00-01-Jul04	65-69	Rattanakiri
63	560101	Bot Chhvear/Untac Bridge	Siem Reap	103 59' 44"	13 20' 39"	97-01-Jul04		Siem Reap
64	570101	Kompong Kdei	St. Chikreng	104 20' 21"	13 07' 36"	62-3, 97-01-Aug04	62-3	Siem Reap
65	540101	Kralanh	Stung Sreng	103 32' 35"	13 32' 36"	62, 97-01-Aug04	62-3	Siem Reap
66	560102	Prasat Keo	Great Lake	103 58' 15"	13 27' 19"	99-01-Aug04		Siem Reap
67	430101	Ban Khmoun	Sekong	106 11' 11"	13 44' 27"	61-70	61-70	Stung Treng
68	430102	Siempang	Sekong	106 23' 36"	14 07' 09"	65-8, 01-04	65-8	Stung Treng
69	430103	Chantangoy	Sekong	106 03' 30"	13 33' 45"	60, 92-01-04	60	Stung Treng
70	440101	Ban Kamphun	Sesan	106 02' 48"	13 32' 05"	60-70, 93-01-04	61-70	Stung Treng
71	014501	Stung Treng	Mekong	106 00' 59"	13 32' 42"	1910-70, 91-01-05	50-70, 90-96	Stung Treng
72	650101	Svay Rieng	Vai Ko	105 48' 13"	11 08' 12"	87-8, 01-02		Svay Rieng
73	680101	Kompong Ampil	Stung Takeo	104 37' 51"	11 04' 34"	2000/1/5		Takeo

Source : Ministry of Water Resources and Meteorology

表-L プレクト・ノット川流域流量観測所

No.	Station Name	Equipment	Location (UTM)		District/village
			Latitude	Longitude	
1	Peam Khley Bridge	Staff gauge	1,266,500	430,871	Phnom Sruoch
2	Thnuos Luong	Loggaer and staff gauge	1,266,357	446,561	Chbr Mon
3	Krang Chek	Loggaer and staff gauge	1,261,082	402,458	Phnom Sruoch
4	Cheneang Kpuos	Loggaer and staff gauge	1,265,906	427,244	Phnom Sruoch
5	Sangkea Tasal	Loggaer and staff gauge	1,290,500	405,000	Aoral
6	Trapeang Kchon	Loggaer and staff gauge	1,267,436	458,215	Samrongtong
7	Roleang Chrey	Staff gauge	1,265,095	440,236	Samrongtong
8	Prey Mean	Staff gauge	1,285,872	406,818	Aoral

Source : Interim Report

表-M.1 バッタバン月降水量 (mm)

Year	Jan.	Feb.	Mar.	Apr.	May	June	July	Aug.	Sept.	Oct.	Nov.	Dec.	Total
1981	0.0	13.5	12.3	301.9	150.7	69.0	145.3	112.5	135.2	82.5	212.8	0.5	1,236.2
1982	0.0	39.3	23.4	56.9	96.5	151.8	126.9	149.1	309.0	176.2	48.3	0.0	1,177.4
1983	0.3	0.0	53.7	0.6	111.6	131.7	167.8	191.3	183.3	383.1	147.6	4.6	1,375.6
1984	0.5	0.0	55.1	22.1	171.5	150.8	242.4	147.8	203.7	152.3	15.2	0.1	1,161.5
1985	43.1	56.8	57.1	137.9	222.4	101.4	212.3	124.7	348.4	213.9	66.4	0.0	1,584.4
1986	0.0	12.5	37.4	42.8	87.1	119.4	108.7	227.2	216.2	202.0	32.3	34.8	1,120.4
1987	0.0	0.0	52.6	61.5	48.1	126.6	81.1	211.1	242.0	78.5	380.9	0.0	1,282.4
1988	0.0	0.0	21.2	198.4	89.5	140.1	155.1	140.1	177.1	316.2	31.1	0.3	1,269.1
1989	16.9	12.5	160.7	79.7	206.0	70.7	98.5	378.6	254.3	179.7	57.7	0.0	1,515.3
1990	10.1	71.3	14.3	76.4	88.3	188.7	192.1	127.7	223.5	346.5	115.3	11.5	1,465.7
1991	0.0	0.0	69.2	32.6	203.8	62.3	136.4	170.0	182.7	243.2	48.1	1.0	1,149.3
1992	5.8	23.2	30.7	15.6	72.2	208.4	151.0	263.8	121.5	288.2	5.0	5.0	1,190.4
1993	3.5	24.8	24.2	27.3	100.7	170.0	150.8	143.8	281.7	350.3	66.3	10.4	1,353.8
1994	0.0	36.5	78.4	25.0	302.3	173.8	110.1	363.9	232.0	182.4	13.2	17.2	1,534.8
1995	0.0	9.3	27.0	74.7	134.8	100.4	175.8	183.7	347.6	278.0	26.7	7.3	1,365.3
1996	0.0	3.2	81.4	83.9	284.6	98.8	124.6	154.2	224.8	429.2	58.2	0.0	1,542.9
1997	3.2	15.1	0.8	57.0	164.6	156.9	205.4	242.1	295.7	141.0	11.6	0.0	1,293.4
1998	1.9	32.8	0.0	41.3	30.7	138.3	127.5	135.0	166.9	215.9	153.0	9.0	1,052.3
1999	9.2	0.0	23.2	144.5	131.9	116.4	123.2	180.6	397.6	104.9	16.3	8.3	1,256.0
2000	0.0	12.5	36.9	105.6	156.6	183.9	204.5	199.2	136.1	318.5	30.2	66.0	1,450.0
2001	11.9	23.6	72.7	52.9	146.5	192.8	102.5	185.9	89.8	163.9	87.2	16.5	1,146.2
2002	2.9	0.0	23.2	87.7	71.9	147.8	26.7	190.8	179.5	336.0	116.5	14.1	1,197.1
2003	0.0	0.0	28.5	197.4	77.8	172.1	110.8	198.5	189.1	252.4	2.8	0.0	1,229.4
2004	7.4	0.2	12.1	45.1	80.5	243.4	197.0	118.3	161.3	115.7	14.5	0.0	995.5
2005	0.0	0.0	0.0	0.0	0.0	0.0	134.3	92.6	227.5	316.4			770.8
Mean	4.7	15.5	39.8	78.8	129.2	136.6	144.4	185.3	221.1	234.7	73.2	8.6	1,271.9

出典：PDWRM Battambang, Department of Meteorology Phnom Penh

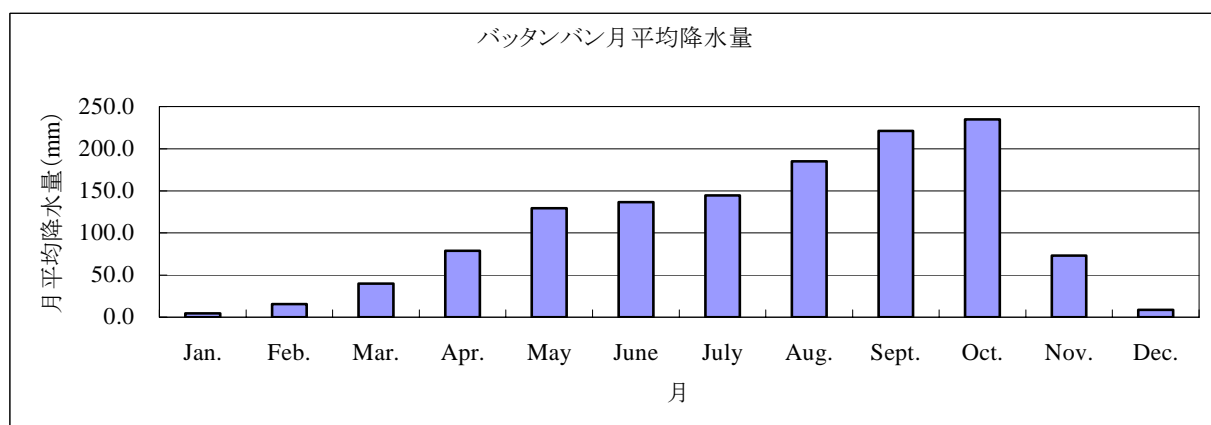
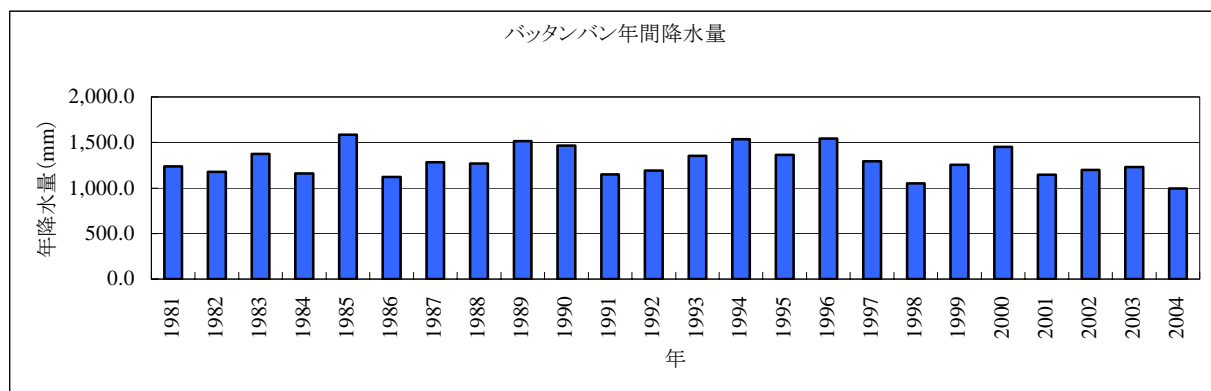


表-M.2 バッタバン月平均最高気温 (°C)

Year	Jan.	Feb.	Mar.	Apr.	May	June	July	Aug.	Sept.	Oct.	Nov.	Dec.	Maximum
1982	29.5	33.1	34.8	34.1	35.1	32.4	32.2	31.5	30.9	30.6	31.0	28.4	35.1
1983	30.6	33.3	36.0	38.1	35.6	34.3	32.7	31.5	31.8	30.0	29.8	-	38.1
1984	29.8	32.9	35.4	36.0	34.0	31.9	32.6	31.6	30.5	30.1	29.7	29.9	36.0
1985	30.7	33.4	34.5	34.7	32.6	31.4	31.5	32.0	31.3	30.7	30.6	29.7	34.7
1986	29.8	33.1	35.0	35.2	33.4	34.2	33.4	32.3	31.4	30.7	29.7	28.8	35.2
1987	30.8	32.9	35.0	35.0	34.0	34.0	34.2	32.8	31.3	30.5	30.2	-	35.0
1988	-	-	-	-	-	-	33.2	32.7	-	30.1	29.1	27.6	
1989	32.9	-	-	-	-	-	-	-	-	-	-	-	
1990	31.4	33.5	34.5	36.5	34.7	34.1	33.0	32.8	32.2	30.5	29.9	29.3	36.5
1991	31.6	33.1	36.0	36.1	34.9	33.0	32.0	31.5	31.3	29.5	29.3	29.7	36.1
1992	29.8	33.5	36.2	37.3	36.4	33.8	32.3	31.7	31.7	29.2	29.0	29.9	37.3
1993	30.3	32.5	34.3	35.9	35.9	34.2	32.7	32.2	24.6	30.3	-	-	35.9
1994	-	-	-	-	-	-	-	-	-	-	-	-	
1995	30.6	32.6	36.6	36.8	35.1	34.3	32.4	32.3	31.0	30.6	29.7	29.2	36.8
1996	31.5	32.7	36.1	34.8	33.7	33.1	32.4	32.5	31.3	31.1	30.2	29.2	36.1
1997	31.4	33.3	36.0	34.7	35.6	34.6	32.5	32.2	32.0	32.0	32.1	32.9	36.0
1998	34.4	36.5	38.7	39.1	38.6	37.1	34.8	33.2	32.6	31.7	30.2	31.0	39.1
1999	32.0	34.0	36.9	34.1	32.9	-	-	-	-	-	-	-	
2000	-	32.9	36.0	35.6	34.8	33.0	32.6	33.3	32.4	31.5	30.6	31.0	36.0
2001	33.4	33.6	33.7	36.1	34.8	34.6	35.3	33.1	33.3	31.7	28.4	30.8	36.1
2002	31.4	34.1	36.8	36.3	34.8	33.8	35.1	32.3	31.8	31.3	30.6	32.3	36.8
2003	31.0	34.1	34.6	36.4	34.4	34.9	-	-	-	-	-	-	
2004		32.9	35.7	36.4	34.8	33.1	32.7	32.6	31.5	30.9	31.4	30.4	36.4
Mean	31.2	33.4	35.6	36.0	34.8	33.8	33.0	32.3	31.3	30.7	30.1	30.0	36.0

出典：PDWRM Battambang, Department of Meteorology Phnom Penh

表-M.3 バッタバン月平均最低気温 (°C)

Year	Jan.	Feb.	Mar.	Apr.	May	June	July	Aug.	Sept.	Oct.	Nov.	Dec.	Minimum
1982	16.7	21.3	23.2	23.6	24.6	24.4	24.0	23.8	23.9	24.0	23.5	17.7	16.7
1983	18.5	21.0	23.4	25.5	24.9	24.3	23.9	24.6	24.2	24.6	21.6	-	18.5
1984	18.7	21.0	22.8	25.1	24.8	24.4	24.7	24.0	23.5	23.0	21.7	18.6	18.6
1985	18.2	21.1	23.0	23.9	23.5	25.0	23.3	23.5	23.6	23.0	22.2	19.0	18.2
1986	16.9	19.5	21.7	24.0	24.7	24.4	24.0	23.5	23.8	24.4	22.2	18.7	16.9
1987	18.5	20.3	22.6	24.4	-	25.4	24.9	24.0	24.2	23.9	24.0	-	18.5
1988	-	-	-	-	-	-	-	22.1	-	-	-	18.0	
1989	-	-	-	-	-	-	-	-	-	-	-	-	
1990	-	-	-	-	-	-	-	-	-	-	-	-	
1991	-	-	24.1	23.8	-	-	24.6	-	-	23.6	-	-	
1992	19.2	22.1	23.7	25.5	26.0	25.1	24.8	24.1	24.4	22.8	20.4	20.4	19.2
1993	19.0	19.2	23.4	24.6	25.0	25.1	25.3	24.4	24.6	24.2	-	-	19.0
1994	-	-	-	-	-	-	-	-	-	-	-	-	
1995	18.2	17.8	21.8	22.9	22.8	22.8	22.2	22.5	22.1	22.3	21.8	19.4	17.8
1996	19.8	20.8	23.2	24.7	24.6	24.9	23.7	24.4	24.5	24.3	23.4	19.5	19.5
1997	18.7	22.1	23.2	23.9	25.0	24.9	24.9	24.4	24.5	24.4	22.8	20.6	18.7
1998	20.5	23.4	24.8	25.6	26.3	25.8	25.0	24.5	24.5	24.1	22.2	19.7	19.7
1999	20.6	21.5	24.8	24.5	24.7	-	-	-	-	-	-	-	
2000	-	20.0	24.0	24.3	25.2	24.4	24.0	24.4	23.8	23.8	21.1	20.9	20.0
2001	21.5	22.1	24.1	25.4	25.7	25.7	25.4	24.4	24.5	23.6	23.6	19.8	19.8
2002	19.0	21.7	24.2	25.0	24.4	24.1	25.8	24.3	23.8	22.6	22.7	22.7	19.0
2003	18.6	21.2	24.0	25.4	25.6	25.1	-	-	-	-	-	-	
2004		22.2	25.3	25.7	26.5	25.3	25.4	25.7	25.1	24.2	23.3	19.0	
Mean	18.9	21.0	23.5	24.6	25.0	24.8	24.5	24.0	24.1	23.7	22.4	19.6	18.9

出典：PDWRM Battambang, Department of Meteorology Phnom Penh

表-M.4 バッタバン月平均気温 (°C)

Year	Jan.	Feb.	Mar.	Apr.	May	June	July	Aug.	Sept.	Oct.	Nov.	Dec.	Average
1982	23.1	27.2	29.0	28.9	29.9	28.4	28.1	27.7	27.4	27.3	27.3	23.1	27.3
1983	24.6	27.2	29.7	31.8	30.3	29.3	28.3	28.1	28.0	27.3	25.7		28.2
1984	24.3	27.0	29.1	30.6	29.4	28.2	28.7	27.8	27.0	26.6	25.7	24.3	27.4
1985	24.5	27.3	28.8	29.3	28.1	28.2	27.4	27.8	27.5	26.9	26.4	24.4	27.2
1986	23.4	26.3	28.4	29.6	29.1	29.3	28.7	27.9	27.6	27.6	26.0	23.8	27.3
1987	24.7	26.6	28.8	29.7		29.7	29.6	28.4	27.8	27.2	27.1		27.9
1988												22.8	
1989													
1990													
1991			30.1	30.0			28.3			26.6			
1992	24.5	27.8	30.0	31.4	31.2	29.5	28.6	27.9	28.1	26.0	24.7	25.2	27.9
1993	24.7	25.9	28.9	30.3	30.5	29.7	29.0	28.3	24.6	27.3			27.9
1994													
1995	24.4	25.2	29.2	29.9	29.0	28.6	27.3	27.4	26.6	26.5	25.8	24.3	27.0
1996	25.7	26.8	29.7	29.8	29.2	29.0	28.1	28.5	27.9	27.7	26.8	24.4	27.8
1997	25.1	27.7	29.6	29.3	30.3	29.8	28.7	28.3	28.3	28.2	27.5	26.8	28.3
1998	27.5	30.0	31.8	32.4	32.5	31.5	29.9	28.9	28.6	27.9	26.2	25.4	29.3
1999	26.3	27.8	30.9	29.3	28.8								28.6
2000		26.5	30.0	30.0	30.0	28.7	28.3	28.9	28.1	27.7	25.9	26.0	28.2
2001	27.5	27.9	28.9	30.8	30.3	30.2	30.4	28.8	28.9	27.7	26.0	25.3	28.5
2002	25.2	27.9	30.5	30.7	29.6	29.0	30.5	28.3	27.8	27.0	26.7	27.5	28.4
2003	24.8	27.7	29.3	30.9	30.0	30.0							
2004		27.6	30.5	31.1	30.7	29.2	29.1	29.2	28.3	27.6	27.4	24.7	28.6
2005													
Mean	25.1	27.2	29.6	30.3	29.9	29.3	28.7	28.2	27.7	27.2	26.3	24.8	27.8

出典：PDWRM Battambang, Department of Meteorology Phnom Penh

表-M.5 バッタバン月平均相対湿度 (%)

Year	Jan.	Feb.	Mar.	Apr.	May	June	July	Aug.	Sept.	Oct.	Nov.	Dec.	Average
1982	77	76	77	78	79	84	82	85	87	87	80	81	81
1983	77	75	71	66	74	78	85	87	89	89	86		80
1984	79	74	70	71	78	80	80	78	86	82	80	75	78
1985	71	73	68	74	82	82	83	80	84	86	83	77	79
1986	71	73	64	70	74	74	80	82	85	85	82	80	77
1987	71	67	66	72	83	75	73	84	88	88	87	-	78
1988	81	73	68	77		87	84	86	81	88	79	80	80
1989	74	72		69	78	83	82	85	86	87	81	78	80
1990	78	76	76	70	82	81	80	81	83	96	83	77	80
1991	75	46	71	69	79	80	82	82	85	87	84	79	77
1992	75	73	69	67	73	82	83	85	86	86	80	78	78
1993	75	70	74	76	80	83	82	80	85	88	-	-	79
1994	-	-	-	-	-	-	-	-	-	-	-	-	
1995	70	67	70	72	76	77	81	83	85	83	83	79	77
1996	72	64	68	77	80	80	83	84	86	85	84	77	78
1997	74	76	74	77	77	77	79	84	84	81	79	76	78
1998	72	68	62	64	64	69	74	78	78	78	79	76	72
1999	73	68	68	75	78	-	-	-	-	-	-	-	
1999	73	68	68	75	78	-	-	-	-	-	-	-	
2004		60	57	61	66	71	72	72	77	75	69	62	
Mean	74	69	69	72	77	79	80	82	84	85	81	77	78

出典：PDWRM Battambang, Department of Meteorology Phnom Penh

表-M.6 バッタバン月平均蒸発量 (mm/day)

Year	Jan.	Feb.	Mar.	Apr.	May	June	July	Aug.	Sept.	Oct.	Nov.	Dec.	Average
1982	4.5	5.2	5.6	5.6	6.4	5.1	4.5	3.8	3.9	4.0	3.3	4.7	4.68
1983	4.5	5.5	5.0	8.2	4.8	5.1	4.4	3.9	4.1	3.6	3.6	-	4.79
1984	3.4	4.4	4.7	4.8	5.0	4.0	4.6	4.2	3.4	3.8	3.5	3.5	4.11
1985	3.0	3.7	3.8	4.3	2.5	3.2	2.8	3.0	2.3	2.0	2.0	2.3	2.91
1986	4.0	4.9	4.3	4.2	4.6	4.6	4.2	3.3	2.2	2.0	2.2	-	3.68
1987	4.5	5.3	6.2	5.4	3.1	4.6	5.3	3.1	2.2	2	1.9	-	3.96
1988	-	-	-	-	-	-	2.7	2.5	2.1	-	3.3	2.1	2.54
1989	4.4	-	-	-	-	-	-	-	-	-	-	-	
1990	3.5	4.4	4.3	5.3	3.6	3.7	3.7	3.5	2.9	2.1	2.3	3.1	3.53
1991	4.1	4.7	5.4	3.6	3.1	3.3	3.5	3.3	2.1	1.8	2.7	3.7	3.44
1992	3.3	3.9	4.6	5.9	4.0	3.1	2.3	2.2	3	2.5	3.6	3.7	3.51
1993	4.3	5.3	5	5.5	4.7	4	3.7	3.6	2.4	2.1	-	-	4.06
1994	-	-	-	-	-	-	-	-	-	-	-	-	
1995	5.0	5.5	5.9	6.3	5.6	5.2	4.5	4.7	4.1	4.7	4.1	4.7	5.03
1996	4.4	4.9	5.6	4.3	5.5	4.7	4.0	4.4	3.5	4.9	4.0	3.8	4.50
1997	4.3	4.1	5.6	5.5	6.6	5.7	5.4	4.8	4.5	4.8	4.8	4.8	5.08
1998	5.2	5.2	5.7	5.6	5.7	5.5	5.1	4.7	4.7	3.7	3.8	4.3	4.93
1999	4.7	4.7	4.9	-	-	-	-	-	-	-	-	-	
2005	4.1	4.9	5.3	5.6	5.0	5.0	-	-	-	-	-	-	
Mean	4.2	4.8	5.1	5.3	4.7	4.4	4.0	3.7	3.2	3.1	3.2	3.7	4.12

出典：PDWRM Battambang, Department of Meteorology Phnom Penh

表-M.7 バッタバン月平均日照時間 (hr)

Year	Jan.	Feb.	Mar.	Apr.	May	June	July	Aug.	Sept.	Oct.	Nov.	Dec.	Average
1982	9.9	8.4	7.7	7.0	7.4	4.8	5.3	3.5	3.9	6.8	8.1	6.2	6.6
1983	9.6	9.8	8.6	8.9	7.1	6.2	7.0	4.9	5.4	4.8	7.8	-	7.3
1984	8.5	9.1	8.7	8.0	7.1	5.8	7.7	4.2	5.4	7.5	7.9	9.3	7.3
1985	9.5	8.9	8.7	7.8	8.0	4.6	6.0	6.6	6.0	6.9	7.5	9.6	7.5
1986	9.4	9.6	10.0	7.5	6.6	6.8	6.0	5.8	5.5	7.0	-	-	7.4
1987	-	-	-	-	-	-	-	-	5.3	6.7	5.9	8.8	
1988	10.1	8.2	8.8	6.8	7.5	-	-	-	6.8	-	6.9	-	
Mean	9.7	9.0	8.8	7.7	7.3	5.6	6.4	5.0	5.5	6.6	7.4	8.5	7.3

出典：PDWRM Battambang, Department of Meteorology Phnom Penh

表-M.8 バッタバン月平均風速 (m/sec)

Year	Jan.	Feb.	Mar.	Apr.	May	June	July	Aug.	Sept.	Oct.	Nov.	Dec.	Average
1982	0.97	1.16	1.27	1.85	1.70	2.35	2.86	2.48	1.48	0.89	1.15	1.14	1.61
1983	1.62	1.42	1.79	2.11	2.22	2.42	1.56	1.90	1.25	1.72	1.38	-	1.76
1984	1.31	1.78	1.56	1.32	1.60	2.22	1.53	1.94	1.89	1.13	1.03	1.28	1.55
1985	1.39	1.38	1.56	1.67	1.64	2.40	1.70	2.22	1.25	1.11	1.08	1.27	1.56
1986	1.52	1.70	1.84	1.56	2.56	2.55	2.19	2.00	1.19	1.20	1.22	1.62	1.76
1987	1.84	1.77	1.79	1.62	1.31	1.51	1.81	1.74	1.23	0.68	1.24	-	1.50
1988	0.75	1.09	1.52	1.22	-	1.48	1.11	1.08	0.88	0.75	1.23	1.63	1.16
1989	0.97	1.04	-	0.96	1.45	1.89	1.66	1.42	1.16	0.87	0.94	-	1.23
1990	1.22	1.38	1.28	-	1.60	2.06	2.16	1.75	1.55	1.61	1.17	1.32	1.55
1991	1.26	1.27	1.64	1.35	1.50	1.63	2.51	1.63	1.39	0.65	0.93	1.05	1.40
1992	1.48	1.35	1.99	1.67	0.67	1.46	1.97	1.49	1.87	2.98	1.85	0.98	1.65
1993	1.40	1.14	1.08	1.16	1.63	1.82	1.97	1.40	1.16	0.98	-	-	1.37
Mean	1.31	1.37	1.58	1.50	1.63	1.98	1.92	1.75	1.36	1.21	1.20	1.29	1.51

出典：PDWRM Battambang, Department of Meteorology Phnom Penh

表-M.9 プルサット月降水量 (mm)

Year	Jan.	Feb.	Mar	Apr	May	Jun	Jul	Aug	Sep	Oct	Nov	Dec	Total
1997	6.2	19.4	17.0	134.0	109.8	170.2	178.4	274.4	263.5	189.4	8.7	0.2	1,371.2
1998	0.0	35.2	0.1	64.2	42.2	198.2	109.4	192.3	280.2	203.9	151.2	9.4	1,286.3
1999	29.9	0.8	20.9	193.0	262.9	241.0	181.3	112.0	215.5	190.6	295.0	37.1	1,780.0
2000	2.5	6.9	36.0	182.4	285.8	214.9	153.6	237.1	146.9	411.5	37.5	25.5	1,740.6
2001	4.8	0.0	214.1	25.4	143.6	134.3	77.2	260.5	212.0	171.9	31.0	22.0	1,296.8
2002	0.0	0.0	31.5	208.6	82.7	102.0	65.7	316.3	198.0	253.2	139.3	11.6	1,408.9
2003	0.0	2.0	247.2	13.0	98.2	206.0	237.6	43.0	203.0	454.6	75.6	2.4	1,582.6
2004	2.0	9.8	48.4	65.5	175.8	148.8	233.4	105.3	257.6	101.2	26.4	0.0	1,174.2
2005	0.0	0.0	42.8	99.8	170.1	164.7	113.6	190.6	309.5	154.0	74.2	4.5	1,323.8
2006	0.0	6.5	88.5	101.8	89.7	63.4	-	-	-	-	-	-	-
Average	4.5	8.1	74.7	108.8	146.1	164.4	150.0	192.4	231.8	236.7	93.2	12.5	1,440.5

出典：PDWRM Pursat

観測所：Phteah Rung, Kravanh, Pursat Province

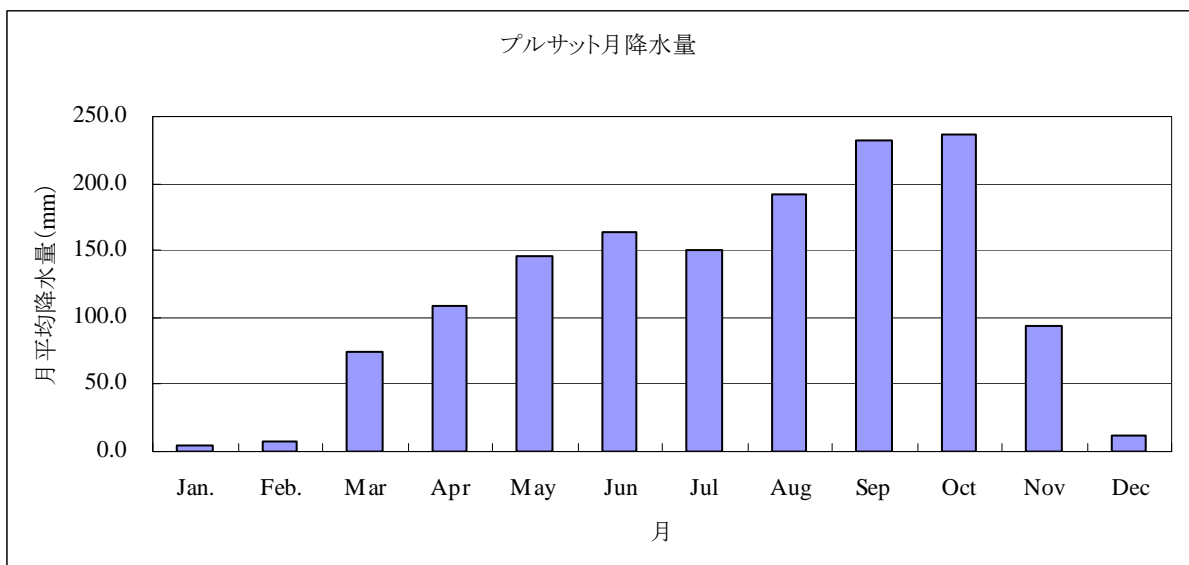
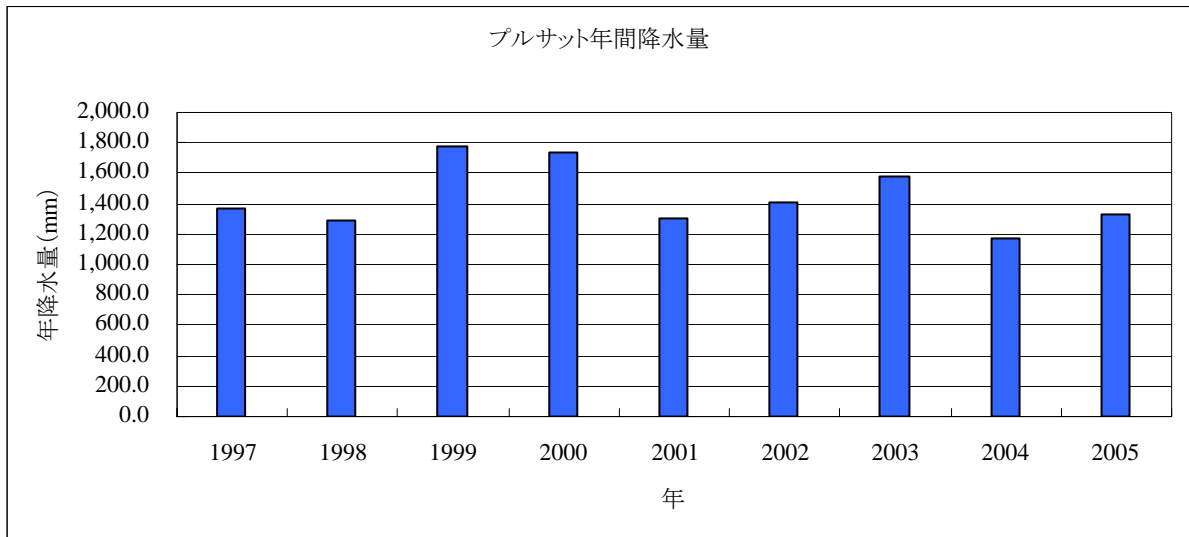


表-M.10 プルサット月降水量（プルサット州内の他の観測所資料）（mm）

観測所： Svay Don Keo, Bakan, Pursat Province

Year	Jan.	Feb.	Mar	Apr	May	Jun	Jul	Aug	Sep	Oct	Nov	Dec	Total
1999	-	-	-	-	-	119.9	118.3	123.9	101.6	132.9	225.6	25.2	-
2000	0.0	0.0	28.0	96.0	197.5	137.2	196.7	62.0	161.1	290.4	26.6	17.4	1,212.9
2001	0.0	0.0	118.8	53.2	137.0	87.5	118.5	111.0	49.4	247.1	94.3	6.8	1,023.6
2002	0.0	0.0	18.3	104.4	40.7	75.4	51.2	107.4	73.3	475.1	82.2	40.3	1,068.3
Average	0.0	0.0	55.0	84.5	125.1	105.0	121.2	101.1	96.4	286.4	107.2	22.4	1,101.6

出典：PDWRM Pursat

観測所： Boeung Khina, Bakan, Pursat Province

Year	Jan.	Feb.	Mar	Apr	May	Jun	Jul	Aug	Sep	Oct	Nov	Dec	Total
1994	-	-	-	75.0	155.1	86.4	44.3	162.0	349.6	133.3	0.2	0.6	-
1995	0.0	0.0	23.8	94.4	72.6	155.1	133.7	235.6	329.3	503.4	146.9	9.9	1,704.7
1996	0.0	14.7	0.0	166.9	50.8	186.1	153.9	187.8	149.4	430.3	118.2	45.9	1,504.0
1997	-	-	-	-	-	-	-	-	-	-	-	-	-
1998	-	-	-	-	-	-	-	-	-	-	-	-	-
1999	0.0	0.0	69.4	275.4	135.3	114.8	187.5	112.6	277.4	141.0	267.9	48.9	1,630.2
2000	0.0	8.8	59.1	60.8	128.0	196.4	334.2	37.5	187.0	754.7	45.5	28.0	1,840.0
2001	0.4	0.4	281.6	13.8	200.1	181.1	165.0	131.0	28.0	189.4	76.3	0.9	1,268.0
2002	0.2	0.0	11.7	296.0	59.4	17.4	11.2	134.0	48.7	266.9	77.2	7.0	929.7
Average	0.1	4.0	74.3	140.3	114.5	133.9	147.1	142.9	195.6	345.6	104.6	20.2	1,479.4

出典：PDWRM Pursat

観測所： Kravanh, Kravanh, Pursat Province

Year	Jan.	Feb.	Mar	Apr	May	Jun	Jul	Aug	Sep	Oct	Nov	Dec	Total
1994	-	-	-	41.0	177.8	139.0	19.0	243.4	293.0	192.7	34.8	0.0	1,140.7
1995	4.7	21.3	60.1	22.7	102.6	225.2	215.3	206.2	311.3	422.0	145.4	43.4	1,780.2
1996	0.0	0.0	28.7	72.6	286.4	179.5	56.4	111.9	318.5	658.8	200.2	71.8	1,984.8
1997	-	-	-	-	-	-	-	120.0	164.4	78.5	54.7	0.0	-
1998	-	-	-	-	-	-	26.0	187.2	392.8	349.9	99.2	15.0	-
1999	20.3	5.6	12.5	374.8	198.9	56.7	269.2	188.0	178.2	367.0	261.1	61.3	1,993.6
2000	0.0	62.2	41.3	430.7	142.2	194.8	298.9	152.0	165.1	446.6	108.6	26.9	2,069.3
2001	20.6	0.0	191.4	6.7	94.8	23.1	23.0	86.1	111.4	254.5	18.2	16.4	846.2
2002	0.0	0.0	57.4	32.7	139.2	144.0	6.8	279.5	100.6	388.0	140.0	0.0	1,288.2
Average	7.6	14.9	65.2	140.2	163.1	137.5	114.3	174.9	226.1	350.9	118.0	26.1	1,586.1

出典：PDWRM Pursat

観測所： Phteah Rung, Kravanh, Pursat Province

Year	Jan.	Feb.	Mar	Apr	May	Jun	Jul	Aug	Sep	Oct	Nov	Dec	Total
2000	-	-	-	-	-	-	112.8	244.7	242.1	405.8	59.8	63.0	-
2001	1.7	0.0	227.3	25.8	133.7	23.0	22.3	101.9	36.7	295.2	49.1	0.0	916.7
2002	0.0	0.0	31.8	41.5	49.4	43.1	3.2	98.7	52.6	149.5	30.3	8.0	508.1
Average	0.9	0.0	129.6	33.7	91.6	33.1	46.1	148.4	110.5	283.5	46.4	23.7	712.4

出典：PDWRM Pursat

観測所 : Boeung Kantout, Krakor, Pursat Province

Year	Jan.	Feb.	Mar	Apr	May	Jun	Jul	Aug	Sep	Oct	Nov	Dec	Total
1994	-	-	-	-	-	-	-	-	292.2	73.9	27.0	0.0	-
1995	0.0	0.0	25.0	111.8	127.5	148.1	195.3	172.7	276.1	346.4	78.3	45.5	1,526.7
1996	0.0	2.7	0.0	82.8	190.1	138.6	164.3	159.9	185.8	463.8	123.0	48.0	1,559.0
1997	-	-	-	-	-	-	-	-	-	-	-	-	-
1998	-	-	-	-	-	-	-	-	-	-	-	-	-
1999	-	-	-	-	-	329.2	157.0	141.4	188.5	299.2	407.6	67.0	1,589.9
2000	0.0	0.0	5.2	142.5	146.2	216.9	181.2	136.6	270.7	397.7	100.4	0.0	1,597.4
2001	0.0	0.0	182.7	0.0	253.8	264.8	169.5	221.3	238.7	128.3	28.8	19.1	1,507.0
2002	0.0	0.0	0.0	173.8	39.5	95.9	76.5	269.5	180.5	157.7	138.5	10.5	-
Average	0.0	0.0	62.6	105.4	146.5	226.7	146.1	192.2	219.6	245.7	168.8	24.2	1,564.8

出典: PDWRM Pursat

観測所 : Dap Bat, Sampaomeas, Pursat Province

Year	Jan.	Feb.	Mar	Apr	May	Jun	Jul	Aug	Sep	Oct	Nov	Dec	Total
2000	-	-	-	-	-	-	124.9	205.1	284.4	483.0	56.4	27.7	-
2001	0.0	0.0	189.3	15.0	125.5	88.4	54.3	163.4	135.0	184.3	24.7	0.0	979.9
2002	0.0	0.0	39.8	126.7	21.8	75.0	50.5	197.8	117.4	244.5	109.9	8.3	991.7
Average	0.0	0.0	114.6	70.9	73.7	81.7	76.6	188.8	178.9	303.9	63.7	12.0	985.8

出典: PDWRM Pursat

観測所 : Peam, Kravanh, Pursat Province

Year	Jan.	Feb.	Mar	Apr	May	Jun	Jul	Aug	Sep	Oct	Nov	Dec	Total
2000	-	-	-	-	-	-	179.3	224.1	213.1	451.0	89.1	31.8	-
2001	28.9	0.0	158.8	8.8	269.0	27.4	23.8	83.0	192.9	251.5	6.4	16.7	1,067.2
2002	0.0	0.0	37.3	82.2	161.0	86.5	22.5	193.7	155.3	326.5	0.0	0.0	1,065.0
Average	14.5	0.0	98.1	45.5	215.0	57.0	75.2	166.9	187.1	343.0	31.8	16.2	1,066.1

出典: PDWRM Pursat

観測所 : Talo, Bakan, Pursat Province

	Jan.	Feb.	Mar	Apr	May	Jun	Jul	Aug	Sep	Oct	Nov	Dec	Total
1999	-	-	-	-	-	147.7	106.2	122.8	216.5	141.4	134.7	16.0	885.3
2000	0.0	0.0	58.1	134.7	123.7	275.9	147.6	170.7	111.1	288.7	79.1	84.1	1,473.7
2001	0.0	0.0	96.1	59.7	104.5	49.1	130.3	127.5	197.1	226.7	0.0	0.0	991.0
2002	0.0	0.0	0.0	60.8	61.5	66.9	82.6	180.7	116.5	198.2	47.5	17.6	-
Average	0.0	0.0	51.4	85.1	96.6	134.9	116.7	150.4	160.3	213.8	65.3	29.4	1,116.7

出典: PDWRM Pursat

観測所 : Krakor, Bannak, Pursat Province

	Jan.	Feb.	Mar	Apr	May	Jun	Jul	Aug	Sep	Oct	Nov	Dec	Total
1999	-	-	-	-	-	161.0	138.4	140.7	265.7	211.0	332.1	80.9	-
2000	0.0	53.6	22.6	193.9	122.0	259.3	420.6	298.6	230.6	321.3	32.0	9.3	1,963.8
2001	18.2	10.8	21.0	11.5	33.3	177.7	215.5	542.7	102.8	164.6	144.8	17.5	1,460.4
2002	4.4	0.0	24.6	68.4	64.9	84.4	88.4	172.5	131.8	169.7	103.1	9.5	921.7
Average	7.5	21.5	22.7	91.3	73.4	170.6	215.7	288.6	182.7	216.7	153.0	29.3	1,448.6

出典: PDWRM Pursat

表-M.11 プルサット月平均最高気温 (°C)

Year	Jan.	Feb.	Mar.	Apr	May	Jun	Jul	Aug	Sep	Oct	Nov	Dec
2001	31.8	33.6	33.8	35.9	34.9	34.1	33.9	33.3	32.4	31.3	29.1	30.4
2002	31.3	33.3	35.4	35.7	35.4	35.2	36.1	33.3	32.7	32.1	31.3	31.7
2003	31.2	33.5	34.0	35.4	35.6	35.2	33.6	34.5	33.2	31.3	31.7	23.0
2004	31.8	33.2	36.2	37.1	-	-	-	-	-	-	-	-
2005	-	35.7	35.1	36.5	36.3	35.2	32.7	33.8	32.1	31.8	31.4	29.7
2006	32.6	34.2	35.8	34.5	34.3	36.1	-	-	-	-	-	-
Average	31.7	33.9	35.0	35.8	35.3	35.2	34.1	33.7	32.6	31.6	30.9	28.7

出典：PDWRM, Pursat

表-M.12 プルサット月平均最低気温 (°C)

Year	Jan.	Feb.	Mar.	Apr	May	Jun	Jul	Aug	Sep	Oct	Nov	Dec
2001	22.5	22.0	24.1	25.9	25.2	25.2	24.5	24.9	24.3	24.5	21.7	21.1
2002	19.5	21.3	23.8	24.5	24.7	24.7	24.6	23.8	24.1	23.5	23.3	29.7
2003	19.3	22.0	23.6	24.9	25.1	24.3	24.1	24.4	23.9	23.6	22.4	19.5
2004	20.6	21.2	24.1	24.7	-	-	-	-	-	-	-	-
2005	-	23.3	24.0	25.6	25.9	25.5	24.5	24.7	24.4	24.3	23.6	21.9
2006	21.9	23.3	24.3	24.8	24.9	24.9	-	-	-	-	-	-
Average	20.8	22.2	24.0	25.1	25.2	24.9	24.4	24.5	24.2	24.0	22.7	23.0

出典：PDWRM, Pursat

表-M.13 プルサット月平均相対湿度 (%)

Year	Jan.	Feb.	Mar.	Apr	May	Jun	Jul	Aug	Sep	Oct	Nov	Dec
2002	66.0	63.0	61.0	65.0	68.0	69.0	64.0	73.0	75.0	75.0	75.0	73.0
2003	65.0	63.0	68.0	66.0	66.0	67.0	72.0	69.0	73.0	76.0	73.0	69.0
Average	65.5	63.0	64.5	65.5	67.0	68.0	68.0	71.0	74.0	75.5	74.0	71.0

出典：PDWRM, Pursat

表-M.14 プルサット月平均風速 (m/sec)

Year	Jan.	Feb.	Mar.	Apr	May	Jun	Jul	Aug	Sep	Oct	Nov	Dec
2002	0.849	0.838	0.817	0.670	0.485	0.377	0.408	0.355	0.326	0.373	0.564	0.621
2003	0.753	0.730	0.544	0.532	0.484	0.366	0.385	0.380	0.307	0.592	0.435	0.545
Average	0.801	0.784	0.680	0.601	0.485	0.372	0.397	0.368	0.317	0.483	0.500	0.583

出典：PDWRM, Pursat

表-M.15 プルサット月平均蒸発量 (mm/sday)

Year	Jan.	Feb.	Mar.	Apr	May	Jun	Jul	Aug	Sep	Oct	Nov	Dec
2003	3.5	3.9	3.7	4.7	4.3	4.0	3.5	3.4	2.8	3.2	3.2	3.0
2004	-	-	-	-	-	-	-	-	-	-	-	-
2005	4.0	4.8	5.0	4.7	4.2	4.1	3.1	3.5	2.8	3.1	3.0	2.9
2006	3.6	4.7	4.6	4.2	4.0	-	-	-	-	-	-	-
Average	3.7	4.5	4.5	4.5	4.2	4.0	3.3	3.4	2.8	3.2	3.1	3.0

出典：PDWRM, Pursat

表-M.16 コンボン・チュナン月降水量 (mm)

Year	Jan.	Feb.	Mar	Apr	May	Jun	Jul	Aug	Sep	Oct	Nov	Dec	Total
1995	0.0	0.0	6.0	0.0	124.9	246.6	181.8	228.0	287.7	124.1	93.2	21.1	1,313.4
1996	0.2	6.0	0.0	118.6	97.7	236.3	340.4	162.4	266.5	201.7	148.0	30.4	1,608.2
1997	0.0	25.8	18.8	99.0	159.8	142.0	227.7	262.5	145.8	192.2	37.0	0.0	1,310.6
1998	0.0	10.2	0.0	42.5	65.8	87.0	257.8	252.8	482.5	202.4	111.3	0.0	1,512.3
1999	3.2	3.0	3.0	99.8	311.2	241.1	153.1	158.8	179.3	463.6	154.1	63.0	1,833.2
2000	27.5	73.0	444.5	111.5	178.0	212.0	190.5	149.0	171.0	14.5	12.0	0.0	1,583.5
2001	55.1	0.3	5.0	17.0	174.7	122.1	253.6	89.3	153.0	161.5	16.3	207.9	1,255.8
2002	0.0	0.0	21.8	0.0	53.8	136.2	241.4	244.2	284.4	48.7	117.6	12.0	1,160.1
2003	0.0	0.0	31.2	41.7	193.4	190.1	192.4	119.4	207.5	122.4	20.6	0.0	1,118.7
2004	10.0	0.0	0.0	4.5	114.8	246.9	193.0	240.3	293.7	138.0	7.7	0.0	1,248.9
2005	0.0	0.0	0.0	17.4	217.0	114.7	141.5	222.5	300.0	231.3	120.5	0.0	1,364.9
Average	8.7	10.8	48.2	50.2	153.7	179.5	215.7	193.6	251.9	172.8	76.2	30.4	1,391.8

出典：PDWRM, Kampong Chhnang

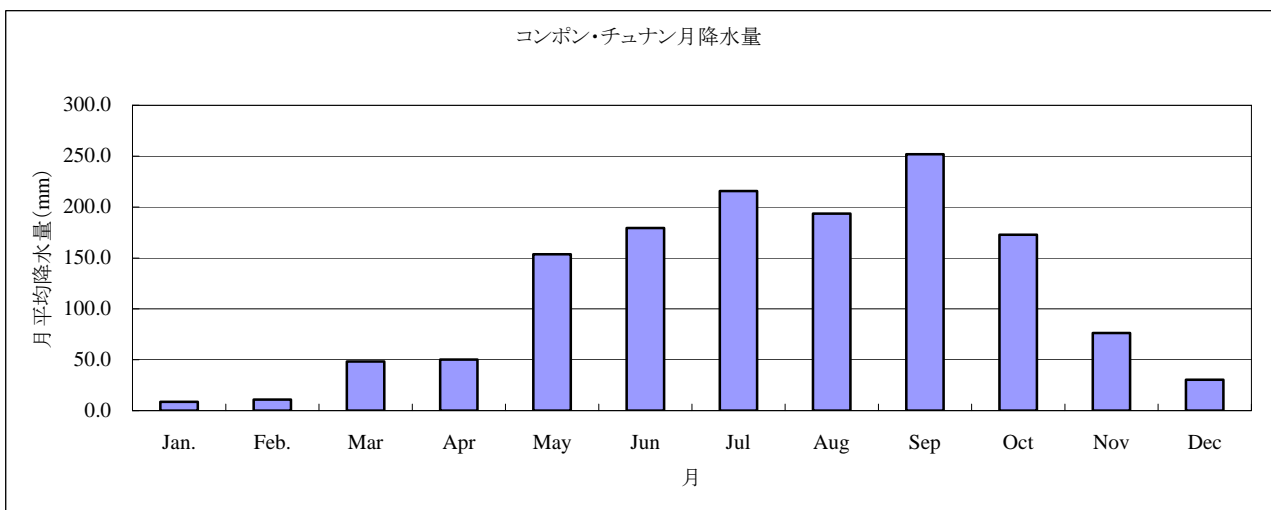
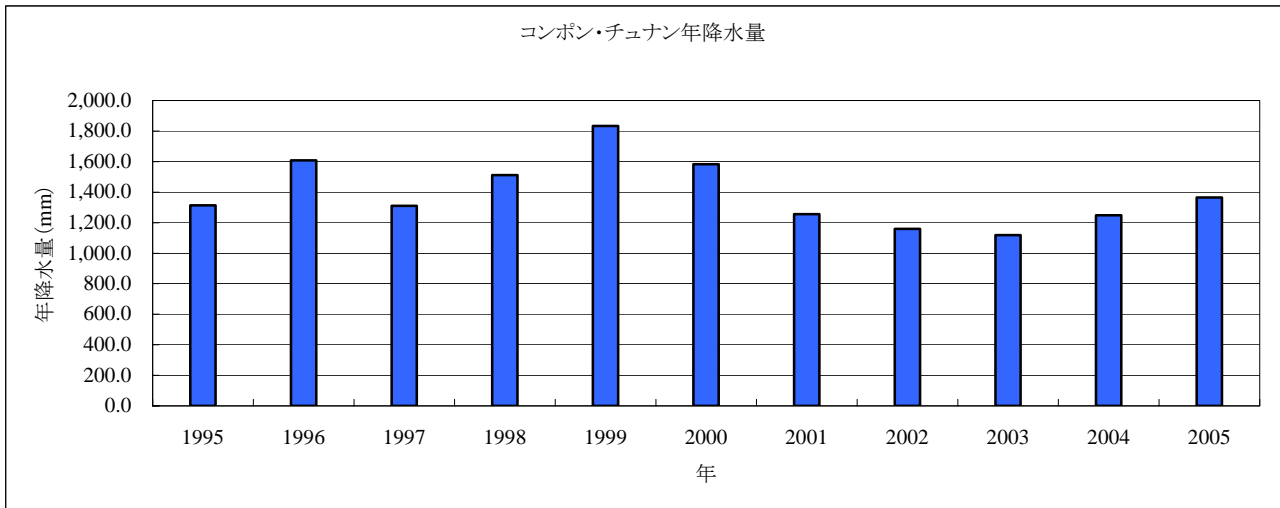


表-M.17 コンボン・チュナン月降水量（コンボン・チュナン州内の他の観測所資料）（mm）

観測所： Boeung Po, Kampong Chhnang Province

Year	Jan.	Feb.	Mar	Apr	May	Jun	Jul	Aug	Sep	Oct	Nov	Dec	Total
2000	-	-	-	-	-	-	139.3	263.7	150.4	243.5	69.2	23.2	-
2001	108.3	0.0	145.8	34.7	180.3	151.7	51.6	371.9	265.7	146.1	0.0	8.1	1,464.2
2002	0.0	0.0	0.0	72.6	132.0	108.6	131.4	273.3	306.1	132.9	68.4	79.1	1,304.4
2003	0.0	0.0	52.5	23.0	169.9	149.1	157.4	166.9	93.1	41.2	28.7	0.0	881.8
2004	0.0	0.0	0.0	14.2	39.5	216.4	196.3	340.8	153.3	190.6	44.5	0.0	1,195.7
2005	0.0	0.0	0.0	58.8	157.4	68.3	119.1	186.4	353.9	278.3	0.0	0.0	1,222.2
Average	21.7	0.0	39.7	40.7	135.8	138.8	132.5	267.2	220.4	172.1	35.1	18.4	1,213.7

出典：PDWRM, Kampong Chhnang

観測所： Kampong Tralach Dst

Year	Jan.	Feb.	Mar	Apr	May	Jun	Jul	Aug	Sep	Oct	Nov	Dec	Total
1995	-	-	-	-	244.3	236.7	74.5	160.1	376.8	-	41.6	44.7	-
1996	0.8	21.8	0.0	84.9	197.1	199.1	138.3	108.1	388.2	246.7	92.0	13.5	1,490.5
1997	0.0	22.6	0.0	65.6	223.7	130.1	79.0	162.7	246.7	205.1	23.8	0.0	1,159.3
1998	0.0	0.0	0.0	85.6	16.4	177.6	83.0	151.0	200.4	231.0	110.5	0.0	1,055.5
1999	0.0	39.8	0.0	97.9	243.3	108.6	209.0	166.8	255.9	194.4	102.0	40.8	1,458.5
2000	0.0	5.1	18.8	66.9	120.9	257.4	176.0	154.7	125.9	218.4	50.6	23.7	1,218.4
2001	98.1	0.0	138.6	12.0	96.7	123.8	195.5	239.1	228.2	181.6	10.6	11.3	1,335.5
2002	0.0	0.0	9.7	19.2	38.2	238.8	157.8	283.5	205.1	114.0	111.2	24.0	1,201.5
2003	0.0	0.0	27.2	80.8	239.3	132.1	166.4	53.9	385.7	157.2	21.6	8.2	1,272.4
2004	15.3	0.0	0.0	21.8	127.5	177.3	102.5	191.2	138.7	122.0	80.7	0.0	977.0
2005	0.0	0.0	0.0	99.7	94.8	55.3	129.9	221.6	236.7	391.9	43.0	0.0	1,272.9
Average	11.4	8.9	19.4	63.4	149.3	167.0	137.4	172.1	253.5	206.2	62.5	15.1	1,244.2

出典：PDWRM, Kampong Chhnang

観測所： Rolea Ph-ear, Kampong Chhnang

Year	Jan.	Feb.	Mar	Apr	May	Jun	Jul	Aug	Sep	Oct	Nov	Dec	Total
1995	0.0	39.0	-	14.0	71.0	-	254.0	253.0	359.0	171.5	66.0	-	-
1996	0.0	0.0	0.0	53.0	159.5	279.0	221.0	158.5	281.0	303.0	107.5	0.0	1,562.5
1997	0.0	43.0	5.0	74.0	138.0	118.0	277.5	236.0	164.0	225.0	0.0	0.0	1,280.5
1998	0.0	0.0	0.0	50.8	134.5	92.0	206.0	111.7	-	168.8	63.5	0.0	-
1999	0.0	0.0	2.0	142.0	320.5	218.8	150.3	89.5	216.5	390.0	164.0	75.5	1,769.1
2000	0.0	6.8	8.8	154.5	177.8	197.8	283.8	267.9	87.9	319.4	47.3	29.9	1,581.9
2001	90.4	0.0	153.5	5.2	138.0	104.6	125.2	349.1	116.8	219.7	14.8	7.9	1,325.2
2002	0.0	0.0	25.0	23.3	81.8	145.5	237.9	215.9	270.6	69.1	129.8	18.8	1,217.7
2003	0.0	0.0	24.2	10.7	174.9	196.8	228.2	118.7	238.1	201.3	10.0	0.0	1,202.9
2004	16.0	0.0	0.0	1.5	79.6	177.7	178.6	211.9	249.0	123.5	0.0	0.0	1,037.8
2005	0.0	0.0	0.0	21.5	195.3	120.5	108.3	189.1	290.7	204.2	116.5	0.0	1,246.1
Average	9.7	8.1	21.9	50.0	151.9	165.1	206.4	200.1	227.4	217.8	65.4	13.2	1,358.2

出典：PDWRM, Kampong Chhnang

観測所: Pon Leiy, Kampong Chhnang

Year	Jan.	Feb.	Mar	Apr	May	Jun	Jul	Aug	Sep	Oct	Nov	Dec	Total
1995	-	-	-	-	-	-	106.2	206.1	146.9	223.3	314.5	75.2	-
1996	0.0	0.0	0.0	51.3	275.4	192.1	197.2	159.3	280.8	214.1	240.3	0.0	1,610.5
1997	0.0	23.7	55.2	61.6	118.0	535.9	187.4	265.1	190.7	181.2	0.0	25.0	1,643.8
1998	0.0	19.0	15.0	36.5	84.9	154.6	118.1	138.7	389.1	157.1	175.4	19.0	1,307.4
1999	0.0	0.0	59.4	84.9	425.5	152.3	369.9	160.1	178.7	373.7	289.0	60.5	2,154.0
2000	0.0	0.0	0.0	90.4	113.5	191.6	269.3	240.9	209.6	424.8	41.6	21.9	1,603.6
2001	0.0	0.0	104.1	16.7	218.0	302.8	196.0	319.4	228.0	237.4	22.0	0.0	1,644.4
2002	0.0	0.0	64.7	18.0	75.5	212.0	145.1	289.0	338.3	98.9	95.9	29.7	1,367.1
2003	0.0	0.0	119.7	75.5	193.1	82.1	125.8	185.4	252.4	162.6	41.0	3.9	1,241.5
2004	-	-	-	-	78.2	384.6	233.5	335.7	187.0	210.0	41.4	0.0	-
2005	0.0	0.0	0.0	64.0	209.6	199.9	200.4	174.9	346.0	263.4	102.4	41.2	1,601.8
Average	0.0	4.7	46.5	55.4	179.2	240.8	195.4	225.0	249.8	231.5	124.0	25.1	1,574.9

出典: PDWRM, Kampong Chhnang

観測所: Pong Ro, Kampong Chhnang Province

Year	Jan.	Feb.	Mar	Apr	May	Jun	Jul	Aug	Sep	Oct	Nov	Dec	Total
2000	-	-	-	-	-	-	230.2	239.6	225.7	326.8	41.9	45.5	-
2001	12.3	0.6	108.2	0.8	190.1	155.5	89.4	329.5	240.0	111.1	56.8	1.4	1,295.7
2002	0.0	1.1	139.7	35.0	64.9	149.8	166.6	272.4	367.0	170.1	214.9	34.5	1,616.0
2003	0.0	0.0	32.6	43.1	115.4	171.7	225.2	73.7	311.2	88.1	15.1	0.0	1,076.1
2004	0.0	0.0	0.0	108.5	35.6	140.7	244.3	225.6	279.0	93.2	10.0	0.0	1,136.9
2005	0.0	0.0	0.0	59.9	139.8	80.0	155.3	72.3	210.3	118.7	55.1	0.0	891.4
Average	2.5	0.3	56.1	49.5	109.2	139.5	185.2	202.2	272.2	151.3	65.6	13.6	1,203.2

出典: PDWRM, Kampong Chhnang

観測所: Prey Kri, Kampong Chhnang Province

Year	Jan.	Feb.	Mar	Apr	May	Jun	Jul	Aug	Sep	Oct	Nov	Dec	Total
2000	-	-	-	-	-	-	-	381.4	280.7	533.7	66.2	39.3	-
2001	126.1	0.0	436.7	46.0	151.6	236.2	119.9	306.5	207.9	335.0	50.7	11.3	2,027.9
2002	91.0	194.3	206.3	430.4	342.2	266.3	128.8	155.0	24.8	8.9	0.0	0.0	1,848.0
2003	0.0	0.0	111.3	195.2	337.4	265.4	396.8	292.5	344.7	179.3	33.4	0.0	2,156.0
2004	0.0	0.0	0.0	43.7	150.9	286.5	68.6	334.6	214.4	361.9	14.8	0.0	1,475.4
2005	0.0	0.0	0.0	99.9	281.2	95.0	143.4	356.0	209.8	248.1	93.3	44.7	1,571.4
Average	43.4	38.9	150.9	163.0	252.7	229.9	171.5	304.3	213.7	277.8	43.1	15.9	1,815.7

出典: PDWRM, Kampong Chhnang

観測所: Samaki, Kampong Chhnang

Year	Jan.	Feb.	Mar	Apr	May	Jun	Jul	Aug	Sep	Oct	Nov	Dec	Total
1996	0.0	0.0	0.0	95.0	95.0	180.0	135.0	243.0	316.0	219.6	0.0	0.0	1,283.6
1997	0.0	0.0	0.0	39.0	119.0	34.0	73.0	418.0	405.0	231.0	0.0	0.0	1,319.0
1998	-	-	-	-	-	-	-	173.0	366.0	353.0	221.0	0.0	-
1999	0.0	0.0	15.0	35.0	267.0	117.0	201.0	40.0	275.0	-	301.0	70.0	-
2000	21.0	0.0	106.0	118.0	57.9	221.8	243.2	303.6	97.5	188.6	69.0	45.0	1,471.6
2001	90.0	0.0	71.0	24.0	132.0	149.0	90.0	242.0	261.0	255.0	0.0	0.0	1,314.0
2002	0.0	0.0	9.0	105.5	74.9	164.0	65.0	157.5	244.5	133.0	75.0	81.0	1,109.4
2003	0.0	0.0	55.0	67.5	167.0	74.0	102.0	87.5	252.0	198.5	20.5	0.0	1,024.0
2004	0.0	0.0	46.0	23.0	109.5	168.0	97.0	245.5	163.3	215.0	58.0	0.0	1,125.3
2005	0.0	0.0	0.0	116.0	95.5	29.0	66.5	82.3	360.5	276.4	0.0	0.0	1,026.2
Average	12.3	0.0	33.6	69.2	124.2	126.3	119.2	199.2	274.1	230.0	74.5	19.6	1,209.1

出典: PDWRM, Kampong Chhnang

観測所: Seitheiy, Kampong Chhnang Province

Year	Jan.	Feb.	Mar	Apr	May	Jun	Jul	Aug	Sep	Oct	Nov	Dec	Total
2000	-	-	-	-	-	-	-	253.0	168.4	283.6	130.7	79.7	-
2001	95.8	0.0	109.8	32.6	130.2	116.7	174.5	191.4	292.2	218.9	41.2	11.8	1,415.1
2002	0.0	0.0	0.0	15.1	109.2	163.8	93.8	213.8	307.5	139.1	100.1	78.6	1,221.0
2003	0.0	0.0	16.1	45.0	131.9	130.5	272.0	119.0	383.3	110.1	35.3	0.0	1,243.2
2004	0.0	0.0	0.0	36.6	-	203.8	44.6	276.3	191.3	185.3	51.0	0.0	-
2005	0.0	0.0	0.0	99.5	-	75.9	145.6	278.6	270.3	348.9	0.0	0.0	-
Average	19.2	0.0	25.2	45.8	123.8	138.1	146.1	222.0	268.8	214.3	59.7	28.4	1,293.1

出典: PDWRM, Kampong Chhnang

観測所: Sraskeo Village, Kampong Chhnang Province

Year	Jan.	Feb.	Mar	Apr	May	Jun	Jul	Aug	Sep	Oct	Nov	Dec	Total
2000	-	-	-	-	-	-	-	401.7	-	382.8	83.2	31.3	-
2001	2.4	0.3	185.1	3.8	242.4	345.2	172.8	521.1	366.2	228.5	18.6	12.1	2,098.5
2002	0.0	0.0	37.4	27.5	148.8	216.5	331.4	302.9	247.7	-	123.0	100.6	-
2003	0.0	0.0	0.0	19.0	101.8	251.5	150.4	326.7	246.4	102.3	12.7	0.0	1,210.8
2004	0.0	0.0	0.0	19.0	101.8	251.5	150.4	326.7	246.4	102.3	12.7	0.0	1,210.8
2005	0.0	0.0	0.0	46.8	151.4	174.9	231.6	136.8	258.5	205.2	122.0	20.6	1,347.8
Average	0.5	0.1	44.5	23.2	149.2	247.9	207.3	336.0	273.0	204.2	62.0	27.4	1,467.0

出典: PDWRM, Kampong Chhnang

観測所: Tang Krasang, Kampong Chhnang Province

Year	Jan.	Feb.	Mar	Apr	May	Jun	Jul	Aug	Sep	Oct	Nov	Dec	Total
2000	-	-	-	-	-	-	-	-	-	-	-	-	-
2001	72.5	0.0	158.7	0.0	200.7	180.1	165.2	391.6	383.1	200.9	17.7	11.1	1,781.6
2002	0.0	0.0	25.9	63.3	36.0	240.4	151.9	225.2	362.9	88.7	93.6	83.6	1,371.5
2003	0.0	0.0	31.2	133.4	303.7	223.7	265.3	213.6	324.3	132.7	41.3	0.0	1,669.2
2004	0.0	6.0	0.0	10.6	129.1	182.0	182.4	279.6	256.5	-	11.5	0.0	-
2005	0.0	0.0	0.0	23.3	149.3	50.2	271.3	195.4	372.4	238.9	11.5	11.5	1,323.8
Average	14.5	1.2	43.2	46.1	163.8	175.3	207.2	261.1	339.8	165.3	35.1	21.2	1,536.5

出典: PDWRM, Kampong Chhnang

観測所: Toeuk Phous, Kampong Chhnang

Year	Jan.	Feb.	Mar	Apr	May	Jun	Jul	Aug	Sep	Oct	Nov	Dec	Total
1995	-	-	0.0	15.0	128.5	140.0	145.8	201.0	189.7	104.2	85.5	0.0	-
1996	0.0	0.0	0.0	48.5	201.6	103.6	129.8	66.0	145.2	345.6	197.0	196.1	1,433.3
1997	0.0	75.0	45.0	54.2	90.0	138.0	132.0	199.5	401.0	356.0	0.0	0.0	1,490.7
1998	0.0	0.0	0.0	22.0	55.0	83.0	223.4	311.3	201.4	129.0	133.0	0.0	1,158.1
1999	0.0	0.0	8.0	105.0	297.0	180.0	109.0	192.0	497.0	301.0	194.1	80.0	1,963.1
2000	0.0	1.0	17.0	163.0	167.7	280.3	222.1	299.4	304.0	256.9	79.8	37.0	1,828.2
2001	63.0	0.0	175.0	9.5	162.7	144.2	125.2	331.8	437.0	189.7	16.8	8.6	1,663.5
2002	0.0	0.0	51.7	59.0	103.5	112.6	125.6	265.0	262.0	74.0	204.0	98.0	1,355.4
2003	0.0	0.0	25.0	168.5	313.0	113.0	221.0	129.0	338.0	130.5	10.0	0.0	1,448.0
2004	14.0	0.0	16.0	33.0	96.0	142.0	73.0	294.0	211.0	-	9.0	0.0	-
2005	0.0	0.0	7.0	30.0	171.0	165.0	173.0	191.0	382.0	223.0	0.0	0.0	1,342.0
Average	7.7	7.6	31.3	64.3	162.4	145.6	152.7	225.5	306.2	211.0	84.5	38.2	1,520.3

出典: PDWRM, Kampong Chhnang

観測所: Trongel, Kampong Chhnang

Year	Jan.	Feb.	Mar	Apr	May	Jun	Jul	Aug	Sep	Oct	Nov	Dec	Total
1995	0.0	0.0	2.4	137.5	-	296.2	205.9	271.7	291.1	207.0	124.7	0.0	-
1996	0.0	0.0	49.5	40.0	64.8	209.2	334.5	77.0	207.0	392.9	166.7	24.3	1,565.9
1997	0.0	129.0	29.5	97.3	80.6	88.4	265.1	-	343.7	195.5	28.0	0.0	-
1998	0.0	0.0	0.0	24.0	28.0	161.0	176.0	228.5	351.5	162.0	171.5	0.0	1,302.5
1999	5.0	0.0	51.0	-	202.0	156.0	131.0	147.0	124.5	398.5	181.0	54.7	-
2000	-	-	-	-	-	-	-	-	-	-	-	-	-
2001	9.0	1.5	193.0	33.0	241.0	212.0	41.0	333.5	271.0	428.0	15.5	3.5	1,782.0
2002	19.5	0.0	110.0	10.5	86.5	140.5	105.2	221.6	260.7	132.9	61.0	17.5	1,165.9
2003	0.0	0.0	93.7	52.5	274.2	173.5	210.7	168.5	206.7	67.0	12.0	0.0	1,258.8
2004	0.0	0.0	0.0	2.7	133.0	333.8	159.5	256.8	396.5	190.5	19.5	0.0	1,492.3
2005	0.0	0.0	14.5	9.5	-	65.0	173.0	188.5	264.2	-	122.0	24.5	-
Average	3.4	13.1	54.4	45.2	138.8	183.6	180.2	210.3	271.7	241.6	90.2	12.5	1,427.9

出典: PDWRM, Kampong Chhnang

表-N 気象水文観測所

Observation Sites of Rainfall		Observation Sites of Water Level	
I. Battambang river basin		I. Battambang river basin	
1.	Ratnak Mondol	1.	Battambang
2.	Samlot	2.	Treng
3.	Phnom Proek		
II. Moug Russey river basin		II. Moug Russey river basin	
4.	Basak Reservoir	3.	Moug Russey
5.	Moug Russey	4.	Prek Chik (River)
		5.	Prek Chik (Canal)
III. Pursat river basin		III. Pursat river basin	
6.	Roveang	6.	Svay Don Keo
7.	Svay Don Keo	7.	Koh Chhom
8.	Koh Chhom	8.	Bomnak
9.	Bomnak		
IV. Boribo river basin		IV. Boribo river basin	
10.	Boribo	9.	Boribo
11.	Svay Chek	10.	Svay Chek
12.	Peam	11.	Peam

表-O 早期に観測を開始する気象水文観測所

降雨観測所

No.	Province	Detailed site
1	Battambang	Phnom Proek
2		Ratanak Mondol
		Total 2 sites

河川水位及び流量観測所

No.	Province	Detailed Site
1	Battambang	Treng (Don Tung Bridge)
2		Prek Chic (River)
3		Prek Chic (Canal)
4	Pursat	Svay Don Keo
5		Bomnak
6	Kampong Chhnang	Boribo (National road bridge)
7		Peam
		Total 7 sites

表-R 農産物収穫面積・生産量

トウモロコシ (生食用)

州名	収穫面積 (ha)			単位生産量 (t/ha)			生産量 (t)		
	合計	雨期作	乾期作	合計	雨期作	乾期作	合計	雨期作	乾期作
1 バッタバン	490	453	37	4.03	4.18	2.27	1,977	1,893	84
2 プルサット	232	161	71	2.29	2.00	2.97	531	322	209
3 コンボン・チュナン	1,364	951	413	1.87	1.95	1.69	2,547	1,850	698
4 コンボン・スプー	133	133	0	0.71	0.71	0.00	94	94	0
5 カンダール	13	9	4	1.41	1.63	0.90	18	15	4
合計	2,232	1,707	525	2.32	2.44	1.90	5,168	4,174	995

トウモロコシ (飼料用)

州名	収穫面積 (ha)			単位生産量 (t/ha)			生産量 (t)		
	合計	雨期作	乾期作	合計	雨期作	乾期作	合計	雨期作	乾期作
1 バッタバン	449	335	114	4.99	4.79	5.55	2,239	1,606	633
2 プルサット	23	23	0	5.33	5.33	0.00	123	123	0
3 コンボン・チュナン	6	0	6	1.30	0.00	1.30	8	0	8
4 コンボン・スプー	5	5	0	0.73	0.73	0.00	4	4	0
5 カンダール	0	0	0	0.00	0.00	0.00	0	0	0
合計	483	363	120	4.91	4.77	5.34	2,373	1,732	641

キャッサバ

州名	収穫面積 (ha)			単位生産量 (t/ha)			生産量 (t)		
	合計	雨期作	乾期作	合計	雨期作	乾期作	合計	雨期作	乾期作
1 バッタバン	357	259	98	11.85	10.84	14.50	4,229	2,808	1,421
2 プルサット	175	143	32	5.84	6.02	5.05	1,023	861	162
3 コンボン・チュナン	460	383	77	4.42	4.19	5.56	2,033	1,604	428
4 コンボン・スプー	94	94	0	1.39	1.39	0.00	131	131	0
5 カンダール	13	7	6	9.00	11.57	6.00	117	81	36
合計	1,099	886	213	6.85	6.19	9.61	7,532	5,485	2,047

サツマイモ

州名	収穫面積 (ha)			単位生産量 (t/ha)			生産量 (t)		
	合計	雨期作	乾期作	合計	雨期作	乾期作	合計	雨期作	乾期作
1 バッタバン	209	110	99	7.18	8.21	6.03	1,500	903	597
2 プルサット	130	95	35	4.09	4.07	4.13	531	387	144
3 コンボン・チュナン	788	637	151	3.64	3.54	4.09	2,870	2,252	618
4 コンボン・スプー	133	133	0	1.12	1.12	0.00	149	149	0
5 カンダール	14	14	0	6.64	6.64	0.00	93	93	0
合計	1,274	989	285	4.04	3.83	4.77	5,143	3,785	1,358

野菜類

州名	収穫面積 (ha)			単位生産量 (t/ha)			生産量 (t)		
	合計	雨期作	乾期作	合計	雨期作	乾期作	合計	雨期作	乾期作
1 バッタバン	1,654	855	799	2.66	3.19	2.09	4,393	2,725	1,668
2 プルサット	386	220	166	6.17	6.05	6.34	2,383	1,329	1,055
3 コンボン・チュナン	3,614	792	2,822	3.45	3.60	3.41	12,476	2,850	9,626
4 コンボン・スプー	214	178	37	3.15	3.52	1.35	675	625	50
5 カンダール	35	13	22	2.44	3.08	2.07	86	40	46
合計	5,903	2,056	3,846	3.39	3.68	3.24	20,013	7,569	12,444

緑豆

州名	収穫面積 (ha)			単位生産量 (t/ha)			生産量 (t)		
	合計	雨期作	乾期作	合計	雨期作	乾期作	合計	雨期作	乾期作
1 バッタバン	1,668	1,291	377	0.71	0.80	0.40	1,180	1,030	149
2 プルサット	245	135	110	0.86	0.87	0.84	210	117	92
3 コンボン・チュナン	1,470	349	1,121	1.14	2.52	0.71	1,679	879	800
4 コンボン・スプー	412	412	0	1.15	1.15	0.00	473	473	0
5 カンダール	30	22	8	1.11	1.19	0.90	33	26	7
合計	3,825	2,209	1,616	0.93	1.14	0.65	3,574	2,526	1,048

ピーナッツ

州名	収穫面積 (ha)			単位生産量 (t/ha)			生産量 (t)		
	合計	雨期作	乾期作	合計	雨期作	乾期作	合計	雨期作	乾期作
1 バッタバン	2,802	1,765	1,037	1.54	2.02	0.72	4,322	3,571	751
2 プルサット	165	128	37	0.84	0.85	0.81	138	108	30
3 コンボン・チュナン	233	233	0	1.14	1.14	0.00	266	266	0
4 コンボン・スプー	278	278	0	1.46	1.46	0.00	406	406	0
5 カンダール	0	0	0	0.00	0.00	0.00	0	0	0
合計	3,478	2,404	1,074	1.48	1.81	0.73	5,132	4,352	781

ダイズ

州名	収穫面積 (ha)			単位生産量 (t/ha)			生産量 (t)		
	合計	雨期作	乾期作	合計	雨期作	乾期作	合計	雨期作	乾期作
1 バッタバン	1,607	899	708	2.13	2.29	1.92	3,417	2,058	1,359
2 プルサット	0	0	0	0.00	0.00	0.00	0	0	0
3 コンボン・チュナン	0	0	0	0.00	0.00	0.00	0	0	0
4 コンボン・スプー	0	0	0	0.00	0.00	0.00	0	0	0
5 カンダール	0	0	0	0.00	0.00	0.00	0	0	0
合計	1,607	899	708	2.13	2.29	1.92	3,417	2,058	1,359

ゴマ

州名	収穫面積 (ha)			単位生産量 (t/ha)			生産量 (t)		
	合計	雨期作	乾期作	合計	雨期作	乾期作	合計	雨期作	乾期作
1 バッタバン	943	802	141	0.60	0.64	0.40	568	511	56
2 プルサット	42	39	4	0.57	0.60	0.30	24	23	1
3 コンボン・チュナン	65	33	32	0.58	0.76	0.41	38	25	13
4 コンボン・スプー	0	0	0	0.00	0.00	0.00	0	0	0
5 カンダール	0	0	0	0.00	0.00	0.00	0	0	0
合計	1,050	873	177	0.60	0.64	0.40	630	559	71

サトウキビ

州名	収穫面積 (ha)			単位生産量 (t/ha)			生産量 (t)		
	合計	雨期作	乾期作	合計	雨期作	乾期作	合計	雨期作	乾期作
1 バッタバン	422	325	97	27.19	26.68	28.90	11,473	8,670	2,803
2 プルサット	149	128	21	19.72	17.59	33.07	2,929	2,251	678
3 コンボン・チュナン	152	125	27	17.99	17.98	18.04	2,727	2,240	487
4 コンボン・スプー	10	10	0	4.47	4.47	0.00	44	44	0
5 カンダール	0	0	0	0.00	0.00	0.00	0	0	0
合計	732	587	145	23.46	22.48	27.46	17,173	13,205	3,968

タバコ

州名	収穫面積 (ha)			単位生産量 (t/ha)			生産量 (t)		
	合計	雨期作	乾期作	合計	雨期作	乾期作	合計	雨期作	乾期作
1 バッターバン	7	7	0	0.77	0.77	0.00	5	5	0
2 プルサット	0	0	0	0.00	0.00	0.00	0	0	0
3 コンボン・チュナン	50	26	24	0.67	0.68	0.67	33	17	16
4 コンボン・スプー	0	0	0	0.00	0.00	0.00	0	0	0
5 カンダール	0	0	0	0.00	0.00	0.00	0	0	0
合計	57	33	24	0.68	0.70	0.67	39	23	16

ジュート

州名	収穫面積 (ha)			単位生産量 (t/ha)			生産量 (t)		
	合計	雨期作	乾期作	合計	雨期作	乾期作	合計	雨期作	乾期作
1 バッターバン	4	4	0	0.80	0.80	0.00	3	3	0
2 プルサット	0	0	0	0.00	0.00	0.00	0	0	0
3 コンボン・チュナン	24	12	12	0.72	0.69	0.75	17	8	9
4 コンボン・スプー	0	0	0	0.00	0.00	0.00	0	0	0
5 カンダール	0	0	0	0.00	0.00	0.00	0	0	0
合計	28	16	12	0.73	0.72	0.75	20	11	9

油脂作物

州名	収穫面積 (ha)			単位生産量 (t/ha)			生産量 (t)		
	合計	雨期作	乾期作	合計	雨期作	乾期作	合計	雨期作	乾期作
1 バッターバン	0	0	0	0.00	0.00	0.00	0	0	0
2 プルサット	0	0	0	0.00	0.00	0.00	0	0	0
3 コンボン・チュナン	10	0	10	1.03	0.00	1.03	10	0	10
4 コンボン・スプー	0	0	0	0.00	0.00	0.00	0	0	0
5 カンダール	0	0	0	0.00	0.00	0.00	0	0	0
合計	10	0	10	1.03	0.00	1.03	10	0	10