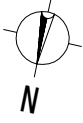


- : Power Cable
- : Telephone Cable
- : Water Pipe
- : Conflict Point

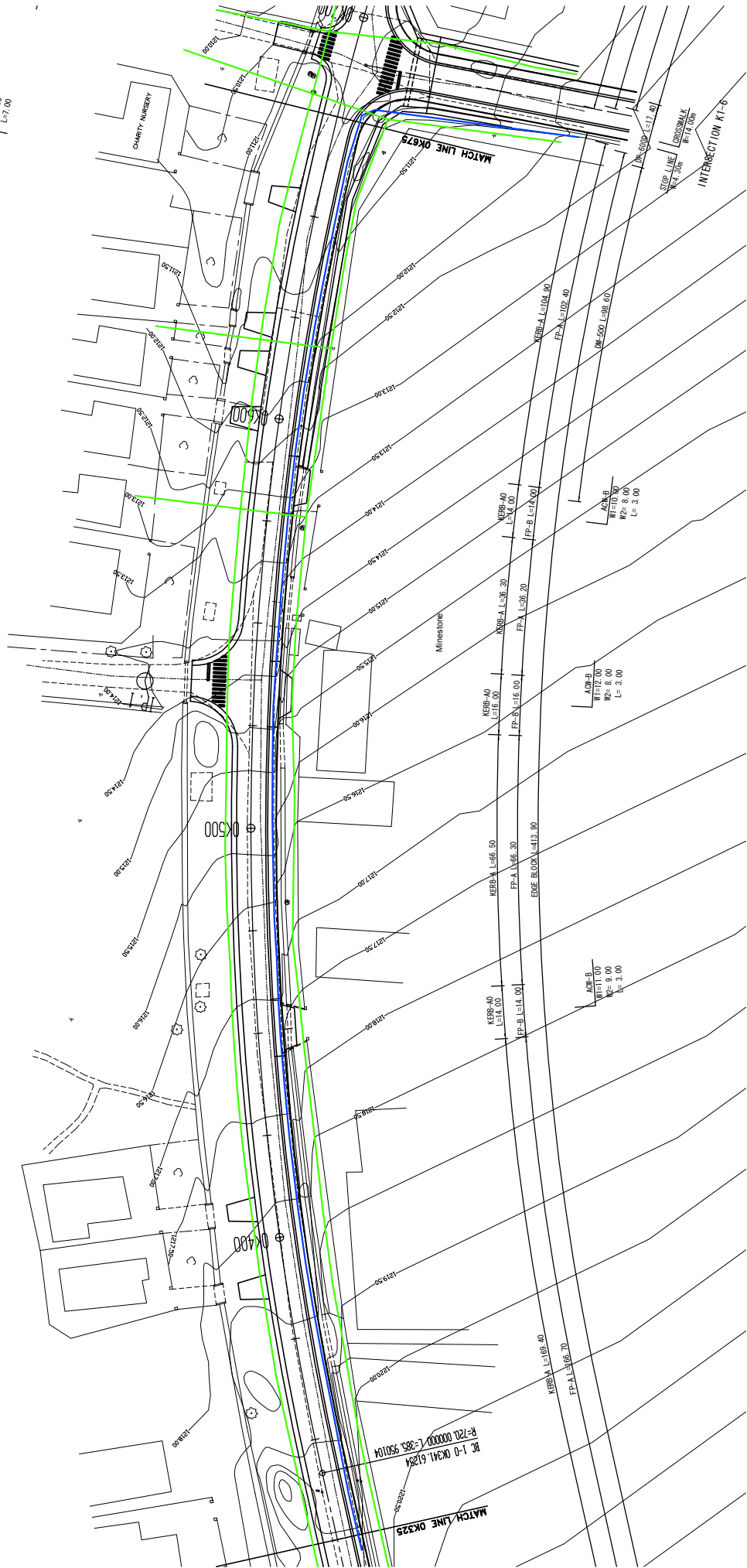


INTERSECTION K1-4

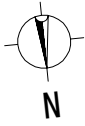
ACR-A	W1=6.00	W2=4.00	L=7.00
ACR-B	W1=6.00	W2=4.00	L=7.00

ACR-A	W1=6.00	W2=4.00	L=7.00
ACR-B	W1=6.00	W2=4.00	L=7.00

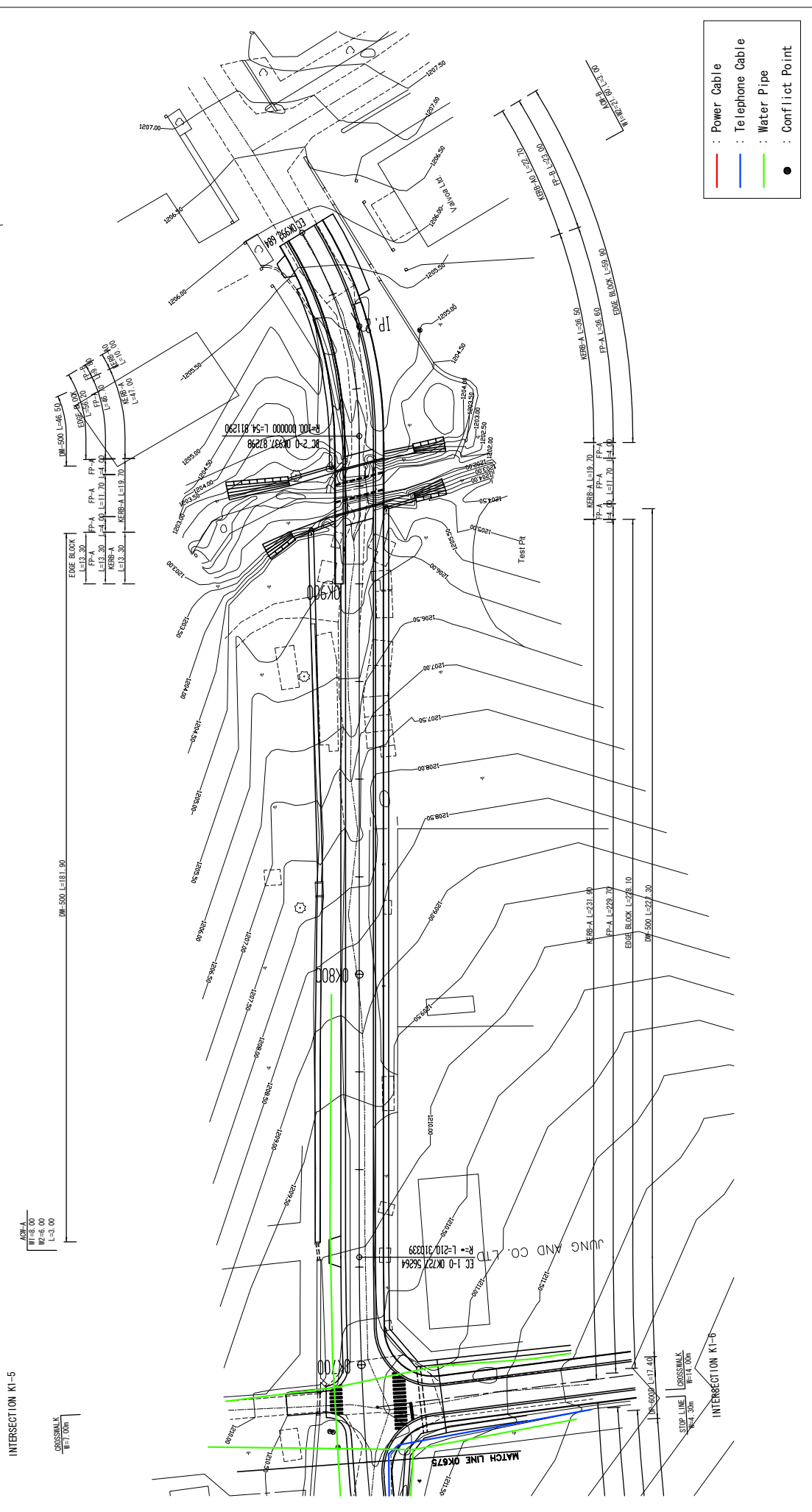
CROSSWALK	W=4.00m
STOP LINE	W=4.00m



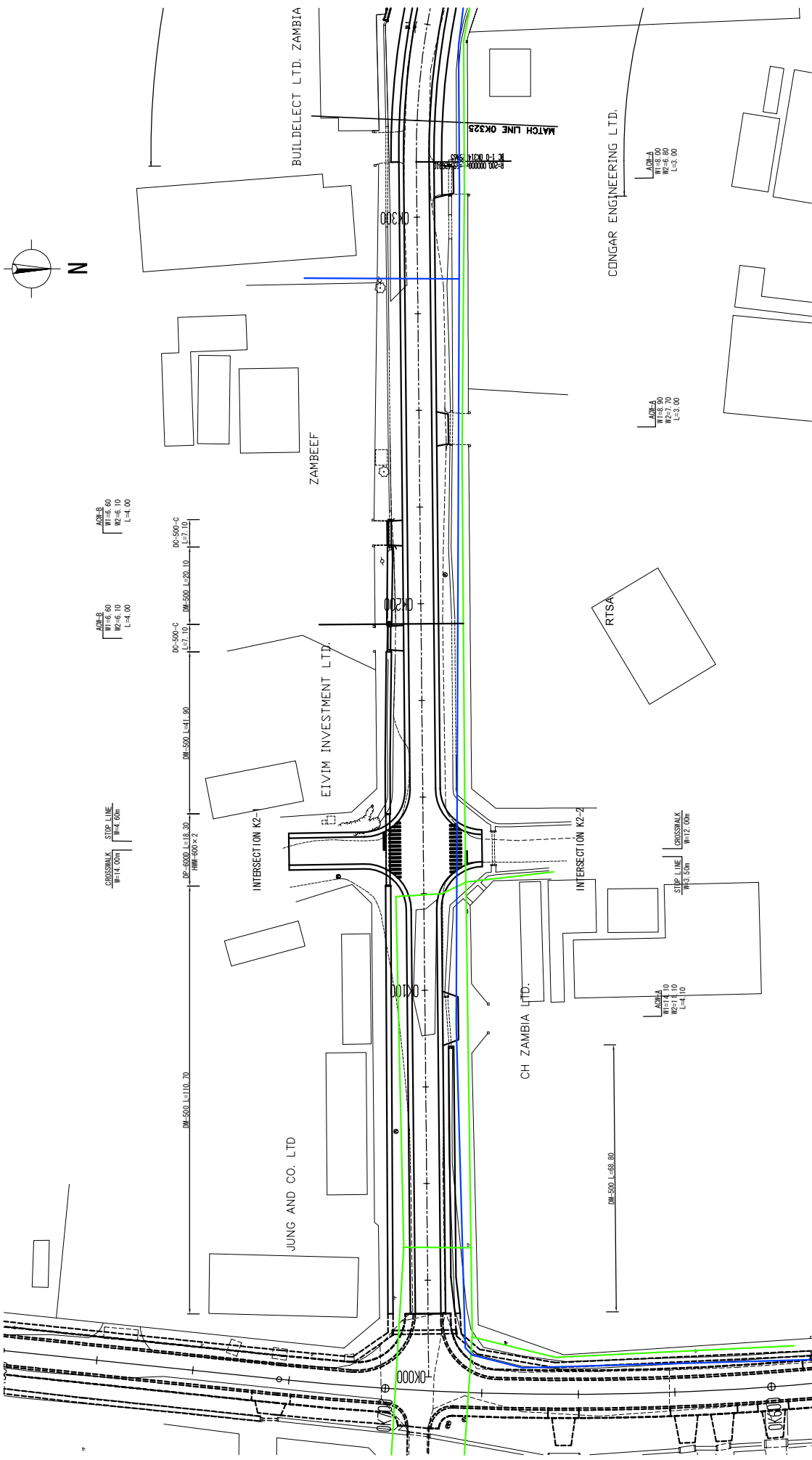
MINISTRY OF LOCAL GOVERNMENT AND HOUSING THE REPUBLIC OF ZAMBIA	BASIC DESIGN FOR THE PROJECT FOR IMPROVEMENT AND MAINTENANCE OF NDUOLA AND KITWE CITY ROADS IN THE REPUBLIC OF ZAMBIA	JAPAN INTERNATIONAL COOPERATION AGENCY (JICA)	PLAN	SCALE K1: DR. AGGREY AVENUE(2/3) S=1500	APPROVED	PREPARED / CHECKED	DATE	SHEET NO
					DATE	SUBMITTED		PL-39
						KATHIRKA & ENGINEERS INTERNATIONAL JAPAN ENGINEERING CONSULTANTS		



- : Power Cable
- : Telephone Cable
- : Water Pipe
- : Conflict Point

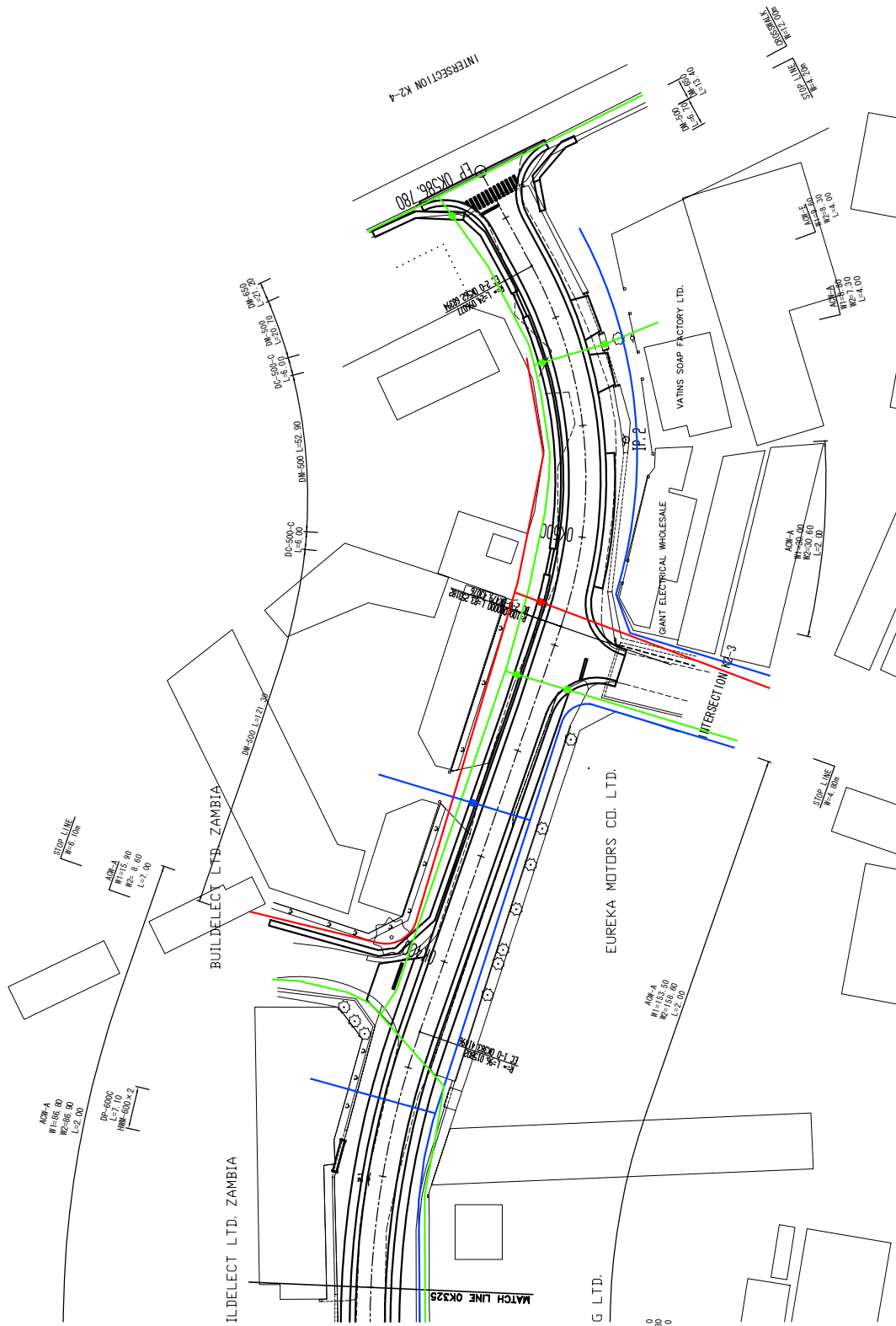
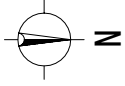


MINISTRY OF LOCAL GOVERNMENT AND HOUSING THE REPUBLIC OF ZAMBIA	JAPAN INTERNATIONAL COOPERATION AGENCY (JICA)	PLAN	SCALE	K1: DR. AGGREY AVENUE(3/3) S=1500	
				APPROVED	DATE
BASIC DESIGN FOR THE PROJECT FOR IMPROVEMENT AND MAINTENANCE OF NDOLE AND KITWE CITY ROADS IN THE REPUBLIC OF ZAMBIA				KATAHARA & ENGINEERS INTERNATIONAL JAPAN ENGINEERING CONSULTANTS	SHEET NO PL-40
		PREPARED	CHECKED	DATE	SHEET NO
		SUBMITTED	DATE	DATE	PL-40



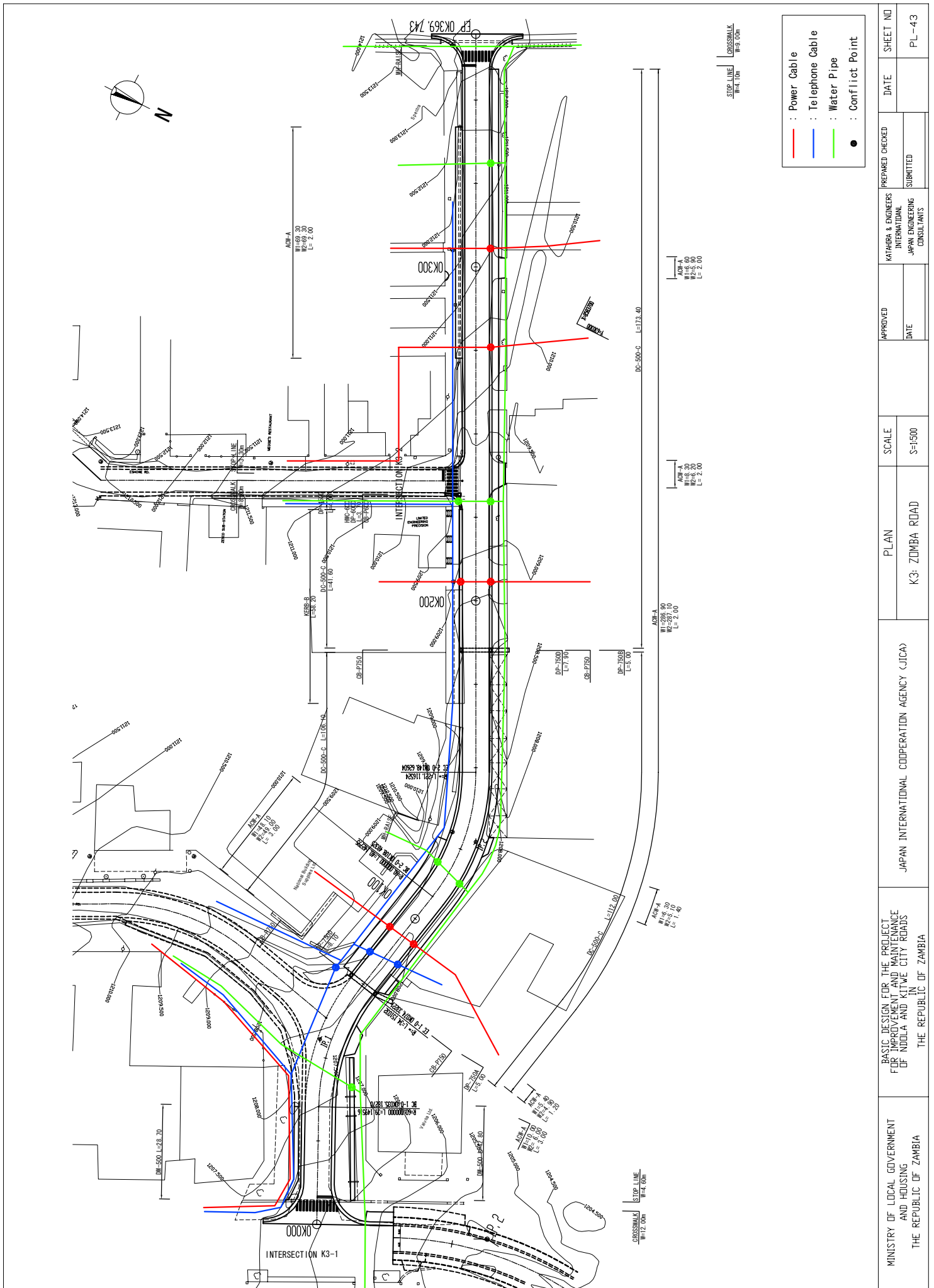
- : Power Cable
- : Telephone Cable
- : Water Pipe
- : Conflict Point

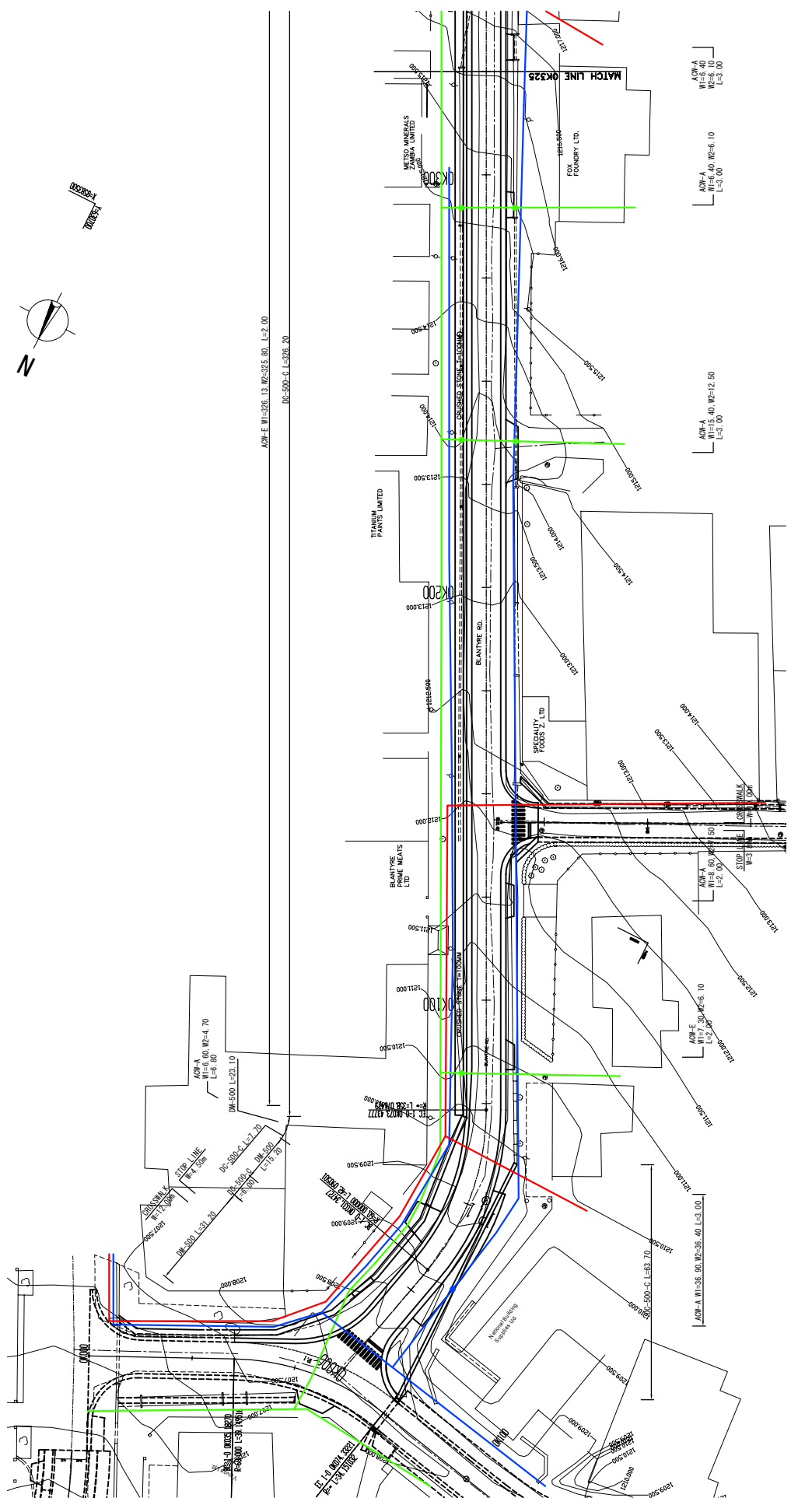
MINISTRY OF LOCAL GOVERNMENT AND HOUSING THE REPUBLIC OF ZAMBIA	JAPAN INTERNATIONAL COOPERATION AGENCY (JICA)	PLAN	SCALE	APPROVED	KATHARA & ENGINEERS INTERNATIONAL JAPAN ENGINEERING CONSULTANTS	PREPARED	DATE	SHEET NO
						CHECKED		
BASIC DESIGN FOR THE PROJECT FOR IMPROVEMENT AND MAINTENANCE OF NDUKA AND KITWE CITY ROADS IN THE REPUBLIC OF ZAMBIA		K2: EUCLID ROAD (1/2)	S=1:500					



- : Power Cable
- : Telephone Cable
- : Water Pipe
- : Conflict Point

MINISTRY OF LOCAL GOVERNMENT AND HOUSING THE REPUBLIC OF ZAMBIA	BASIC DESIGN FOR THE PROJECT FOR IMPROVEMENT AND MAINTENANCE OF NDUKA AND KITWE CITY ROADS IN THE REPUBLIC OF ZAMBIA	JAPAN INTERNATIONAL COOPERATION AGENCY (JICA)	PLAN K2: EUCLID ROAD (2/2)	SCALE S=1:500	APPROVED	DATE	SHEET NO
					DATE	PL-42	
					PREPARED	CHECKED	
					DATE	DATE	
					KATAHARA & ENGINEERS INTERNATIONAL JAPAN ENGINEERING CONSULTANTS		





- : Power Cable
- : Telephone Cable
- : Water Pipe
- : Conflict Point

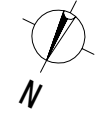
ADP-E WI-326.13 W2-325.80, L=2.00
DC-500-C L=326.20

ADP-A WI-40. W2=5.10
L=3.00

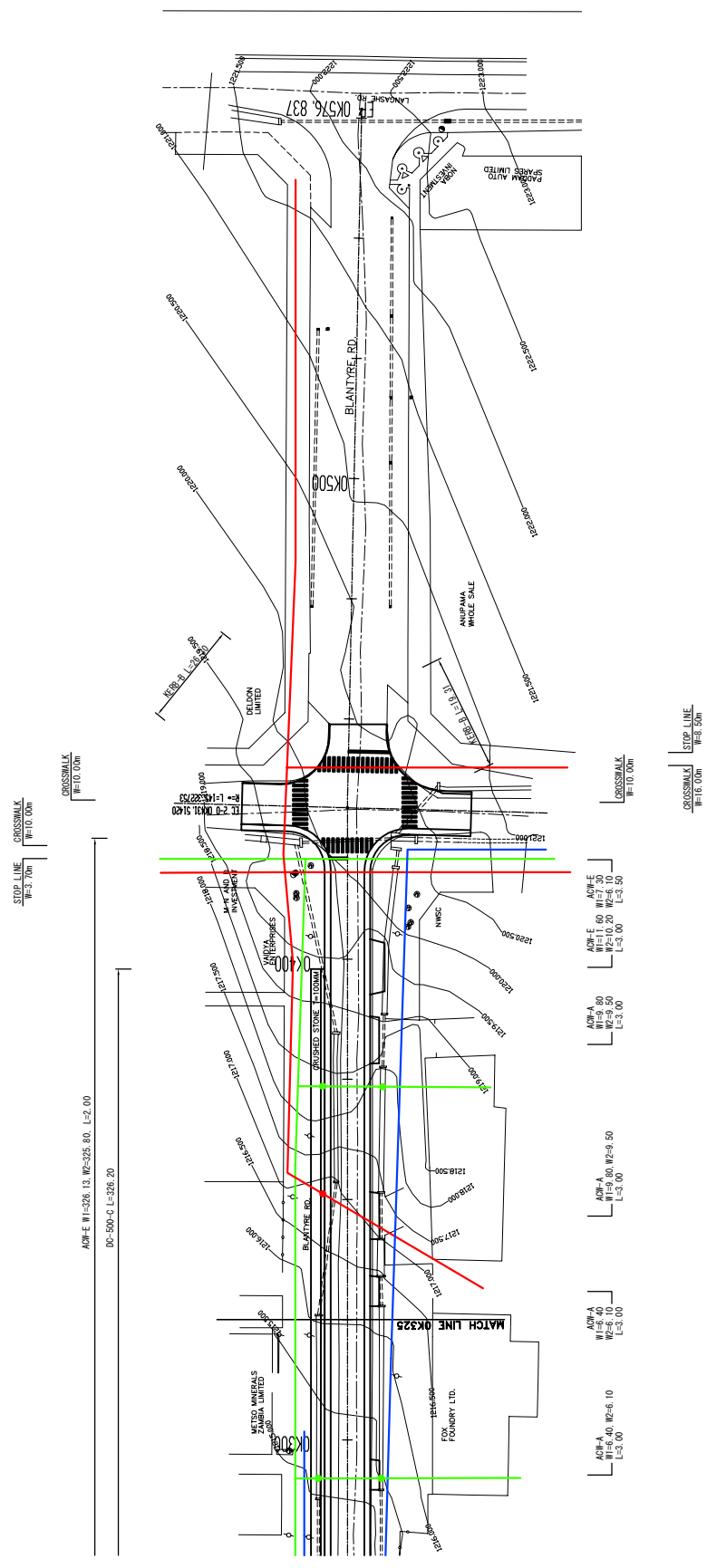
ADP-E WI-37.30 W2=6.10
L=2.00

ADP-A WI-38.80 W2=38.40 L=3.00
DC-500-C L=63.70

MINISTRY OF LOCAL GOVERNMENT AND HOUSING THE REPUBLIC OF ZAMBIA	BASIC DESIGN FOR THE PROJECT FOR IMPROVEMENT AND MAINTENANCE OF NDUOLA AND KITWE CITY ROADS IN THE REPUBLIC OF ZAMBIA	JAPAN INTERNATIONAL COOPERATION AGENCY (JICA)	PLAN	SCALE	APPROVED	KATAHARA & ENGINEERS INTERNATIONAL JAPAN ENGINEERING CONSULTANTS	PREPARED	DATE	SHEET NO
							CHECKED	DATE	PL-44
			K4: BLANTYRE ROAD (1/2)	S=1:500	DATE	CONSULTANTS	SUBMITTED		



0+000
100000

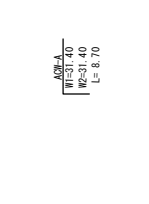
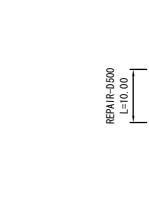
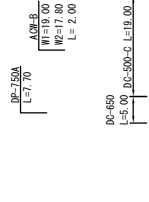
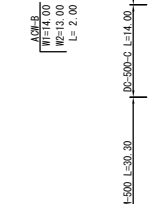
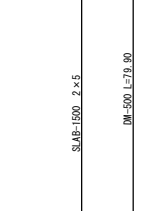
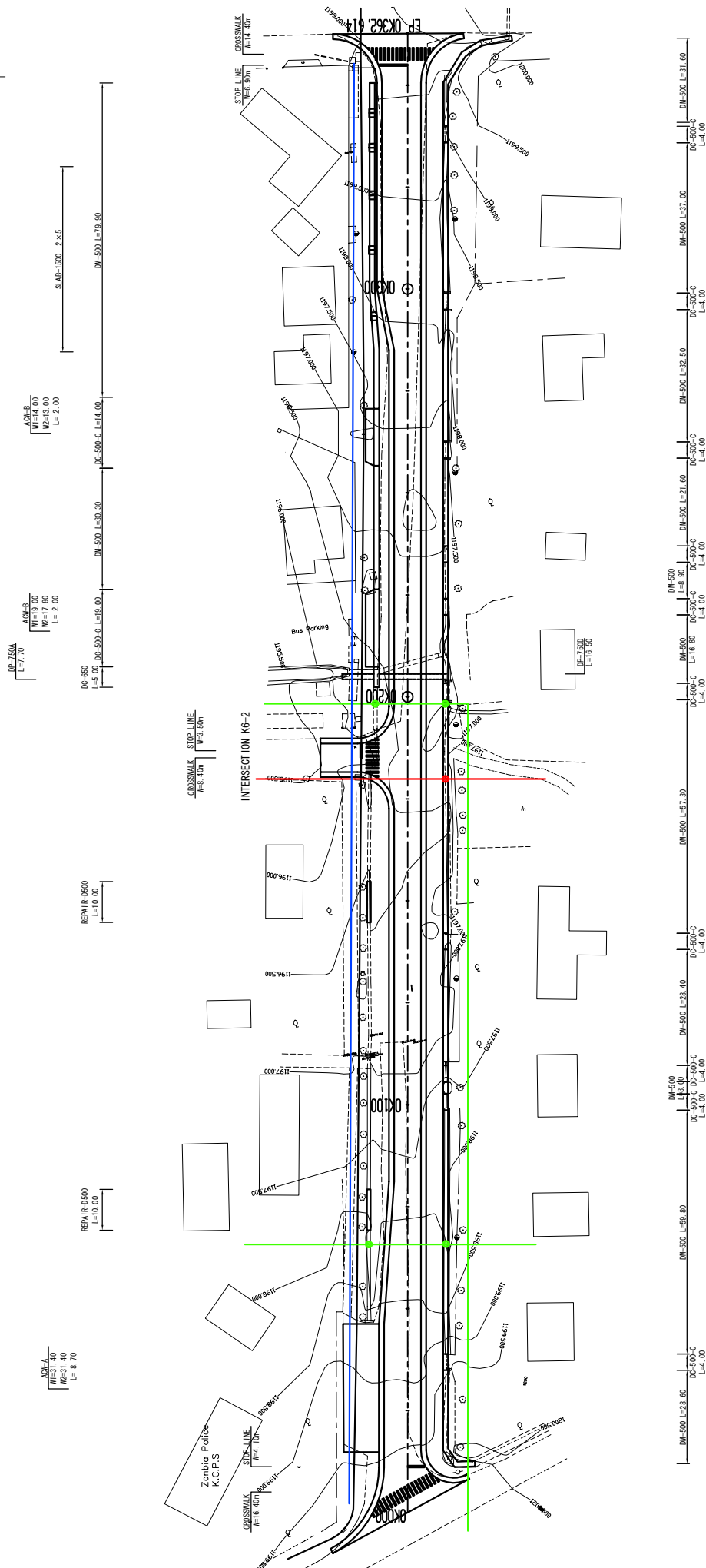
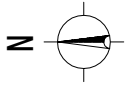


- : Power Cable
- : Telephone Cable
- : Water Pipe
- : Conflict Point

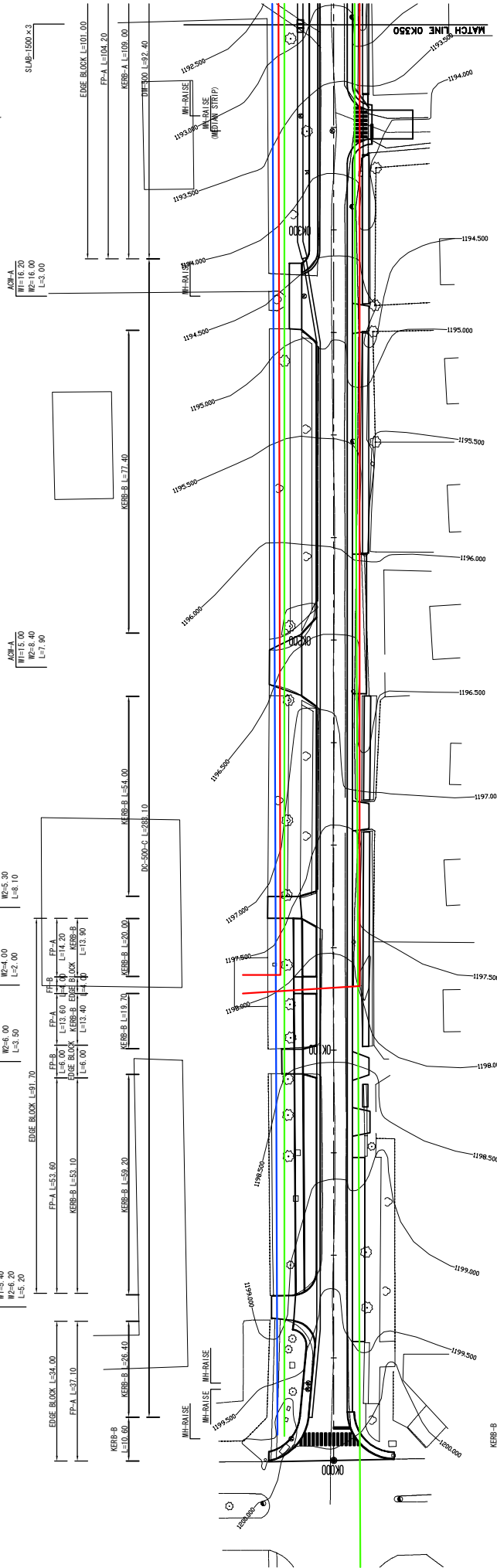
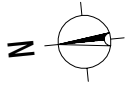
MINISTRY OF LOCAL GOVERNMENT AND HOUSING THE REPUBLIC OF ZAMBIA	BASIC DESIGN FOR THE PROJECT FOR IMPROVEMENT AND MAINTENANCE OF NDUWA AND KITWE CITY ROADS IN THE REPUBLIC OF ZAMBIA	JAPAN INTERNATIONAL COOPERATION AGENCY (JICA)	PLAN	SCALE S=1:500	APPROVED DATE	K4: BLANTYRE ROAD (2/2)	PREPARED: CHECKED	DATE	SHEET NO
							INTERNATIONAL JAPAN ENGINEERING CONSULTANTS	SUBMITTED	



MINISTRY OF LOCAL GOVERNMENT AND HOUSING THE REPUBLIC OF ZAMBIA	BASIC DESIGN FOR THE PROJECT FOR IMPROVEMENT AND MAINTENANCE OF NDOLE AND KITWE CITY ROADS IN THE REPUBLIC OF ZAMBIA		JAPAN INTERNATIONAL COOPERATION AGENCY (JICA)		PLAN	SCALE	APPROVED	PREPARED / CHECKED	DATE	SHEET NO
					K5: ESHOWE ROAD	S=1:500	DATE	SUBMITTED		PL-46

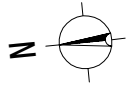


MINISTRY OF LOCAL GOVERNMENT AND HOUSING THE REPUBLIC OF ZAMBIA	JAPAN INTERNATIONAL COOPERATION AGENCY (JICA)	PLAN	SCALE S=1:500	APPROVED	PREPARED	DATE	SHEET NO
				DATE	DATE	DATE	PL-47
BASIC DESIGN FOR THE PROJECT FOR IMPROVEMENT AND MAINTENANCE OF NDUKA AND KITWE CITY ROADS IN THE REPUBLIC OF ZAMBIA		K6: MATUKA AVENUE		KATAHIRA & ENGINEERS INTERNATIONAL JAPAN ENGINEERING CONSULTANTS			

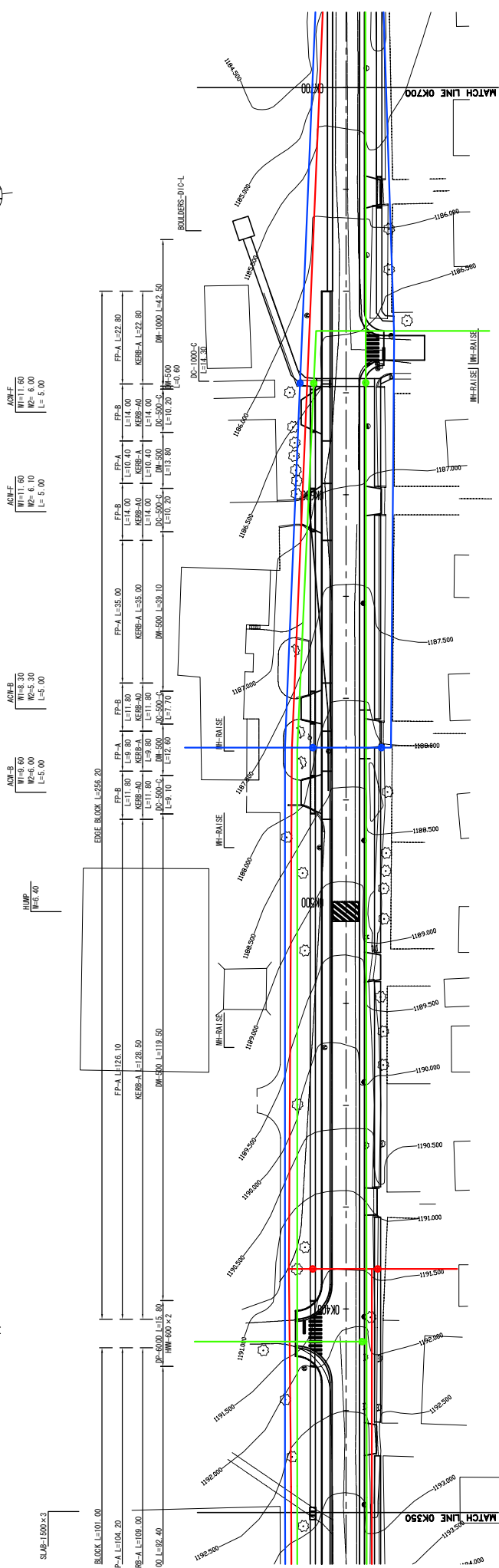


- : Power Cable
- : Telephone Cable
- : Water Pipe
- : Conflict Point

MINISTRY OF LOCAL GOVERNMENT AND HOUSING THE REPUBLIC OF ZAMBIA	BASIC DESIGN FOR THE PROJECT FOR IMPROVEMENT AND MAINTENANCE OF NDUOLA AND KITWE CITY ROADS IN THE REPUBLIC OF ZAMBIA	JAPAN INTERNATIONAL COOPERATION AGENCY (JICA)	PLAN	K7: KANTANTA STREET (1/77)	SCALE S=1:500	APPROVED	KATAHARA & ENGINEERS INTERNATIONAL JAPAN ENGINEERING CONSULTANTS	PREPARED	DATE	SHEET NO
						DATE		SUBMITTED		PL-48



CROSSWALK STOP LINE
W1=1.00M W2=3.20M



ACW-B
W1=9.60
W2=6.00
L=5.00

ACW-B
W1=9.60
W2=6.10
L=5.00

ACW-F
W1=11.60
W2=6.00
L=5.00

ACW-F
W1=11.60
W2=6.10
L=5.00

ACW-F
W1=8.70
W2=5.50
L=3.00

ACW-F
W1=7.40
W2=5.10
L=4.00

ACW-F
W1=8.70
W2=5.50
L=3.00

ACW-F
W1=8.70
W2=5.50
L=3.00

ACW-F
W1=7.40
W2=5.10
L=4.00

ACW-F
W1=8.70
W2=5.50
L=3.00

ACW-F
W1=7.40
W2=5.10
L=4.00

ACW-F
W1=8.70
W2=5.50
L=3.00

ACW-F
W1=7.40
W2=5.10
L=4.00

ACW-F
W1=8.70
W2=5.50
L=3.00

ACW-F
W1=7.40
W2=5.10
L=4.00

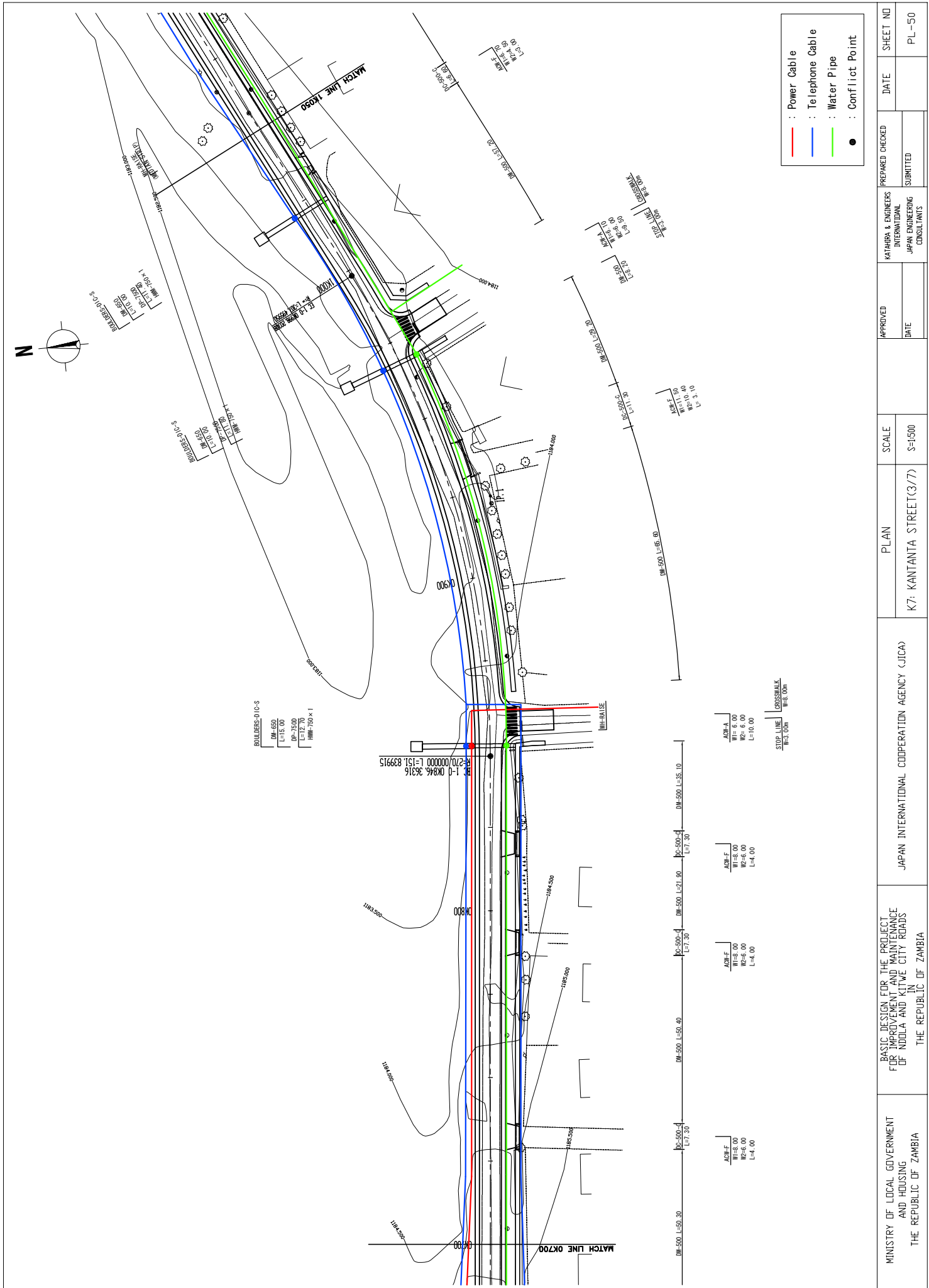
ACW-F
W1=8.70
W2=5.50
L=3.00

ACW-F
W1=7.40
W2=5.10
L=4.00

STOP LINE CROSSWALK
W=3.00M

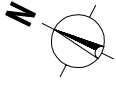
- : Power Cable
- : Telephone Cable
- : Water Pipe
- : Conflict Point

MINISTRY OF LOCAL GOVERNMENT AND HOUSING THE REPUBLIC OF ZAMBIA	BASIC DESIGN FOR THE PROJECT FOR IMPROVEMENT AND MAINTENANCE OF NDUOLA AND KITWE CITY ROADS IN THE REPUBLIC OF ZAMBIA	JAPAN INTERNATIONAL COOPERATION AGENCY (JICA)	PLAN	K7: KANTANTA STREET(2/7)	SCALE S=1:500	APPROVED	DATE
						KATAHIRA & ENGINEERS INTERNATIONAL JAPAN ENGINEERING CONSULTANTS	DATE
						PREPARED	CHECKED
						SUBMITTED	DATE
							SHEET NO
							PL-49



- : Power Cable
- : Telephone Cable
- : Water Pipe
- : Conflict Point

MINISTRY OF LOCAL GOVERNMENT AND HOUSING THE REPUBLIC OF ZAMBIA	JAPAN INTERNATIONAL COOPERATION AGENCY (JICA)	PLAN	SCALE	APPROVED	DATE	SHEET NO
					SUBMITTED	PL-50
BASIC DESIGN FOR THE PROJECT FOR IMPROVEMENT AND MAINTENANCE OF NIDOLA AND KITWE CITY ROADS IN THE REPUBLIC OF ZAMBIA		K7: KANTANTA STREET(3/7)	S=1:500	DATE		
JAPAN INTERNATIONAL COOPERATION AGENCY (JICA)				DATE		
KANTANTA & ENGINEERS INTERNATIONAL JAPAN ENGINEERING CONSULTANTS				DATE		



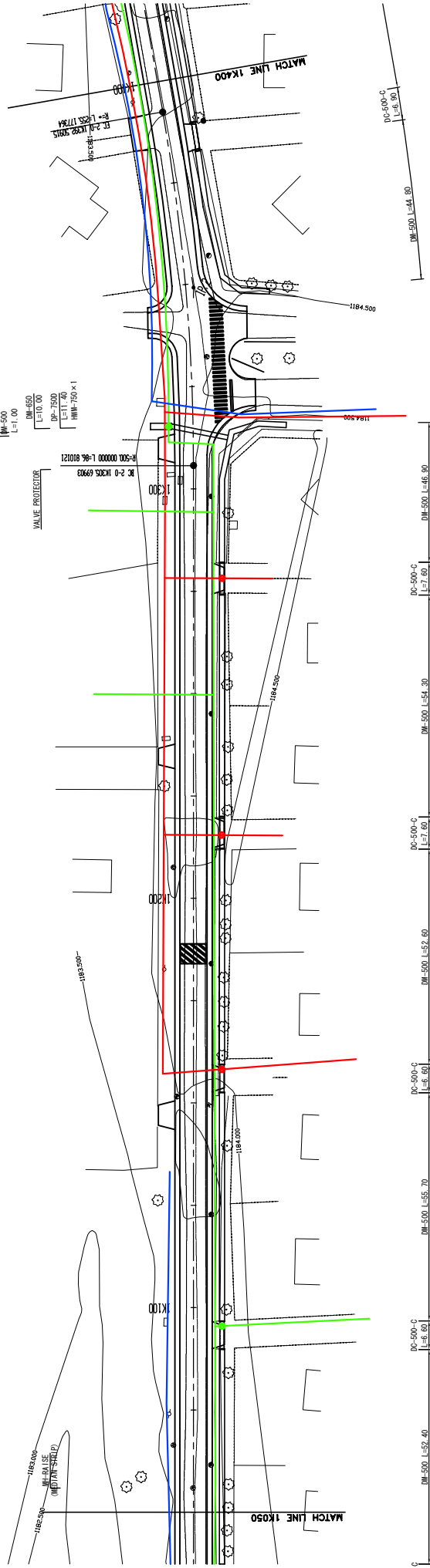
ADMF
W1=6.00
W2=7.00
L=4.00

ADMF
W1=7.00
W2=5.00
L=4.00

ADMF
W1=6.00
W2=4.00
L=4.00

HMP
H=2.40

ADMF
W1=7.00
W2=5.00
L=4.00



ADMF
W1=6.00
W2=5.00
L=2.90

ADMF
W1=7.70
W2=5.50
L=3.00

ADMF
W1=7.70
W2=5.50
L=3.00

ADMF
W1=6.70
W2=4.50
L=3.00

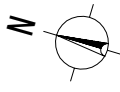
ADMF
W1=6.70
W2=4.50
L=3.00

STREET LINE
H=7.60m

CROSSWALK
W=30.00m

- : Power Cable
- : Telephone Cable
- : Water Pipe
- : Conflict Point

MINISTRY OF LOCAL GOVERNMENT AND HOUSING THE REPUBLIC OF ZAMBIA	BASIC DESIGN FOR THE PROJECT FOR IMPROVEMENT AND MAINTENANCE OF NDUKA AND KITWE CITY ROADS IN THE REPUBLIC OF ZAMBIA	JAPAN INTERNATIONAL COOPERATION AGENCY (JICA)	PLAN	K7: KANTANTA STREET(4/7)	SCALE S=1:500	APPROVED	KATAHARA & ENGINEERS INTERNATIONAL JAPAN ENGINEERING CONSULTANTS	PREPARED	CHECKED	DATE	SHEET NO
						DATE		SUBMITTED			PL-51



ACM-A
W1=5.50
W2=4.00
L=3.00

ACM-A
W1=6.00
W2=6.00
L=10.00
DM=650
DS=750D
L=13.50
HMM=750x1

ACM-F
W1=8.70
W2=6.30
L=4.00

ACM-F
W1=8.70
W2=6.30
L=4.00

ACM-F
W1=5.70
W2=3.30
L=4.00

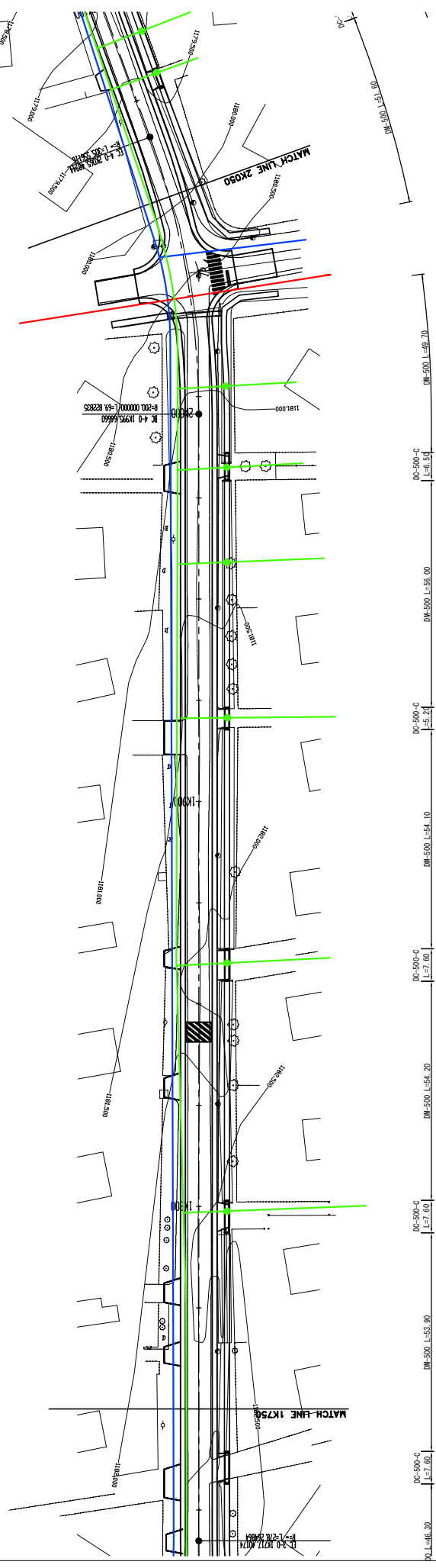
HUMP
H=6.30

ACM-F
W1=6.80
W2=4.80
L=4.00

ACM-F
W1=6.80
W2=4.80
L=4.00

ACM-F
W1=9.00
W2=4.00
L=4.00

ACM-F
W1=5.50
W2=4.00
L=3.50



ACM-A
W1=7.00
W2=1.00
L=10.00

ACM-F
W1=5.90
W2=4.70
L=5.00

ACM-F
W1=4.30
W2=4.70
L=5.00

ACM-F
W1=7.30
W2=7.10
L=5.00

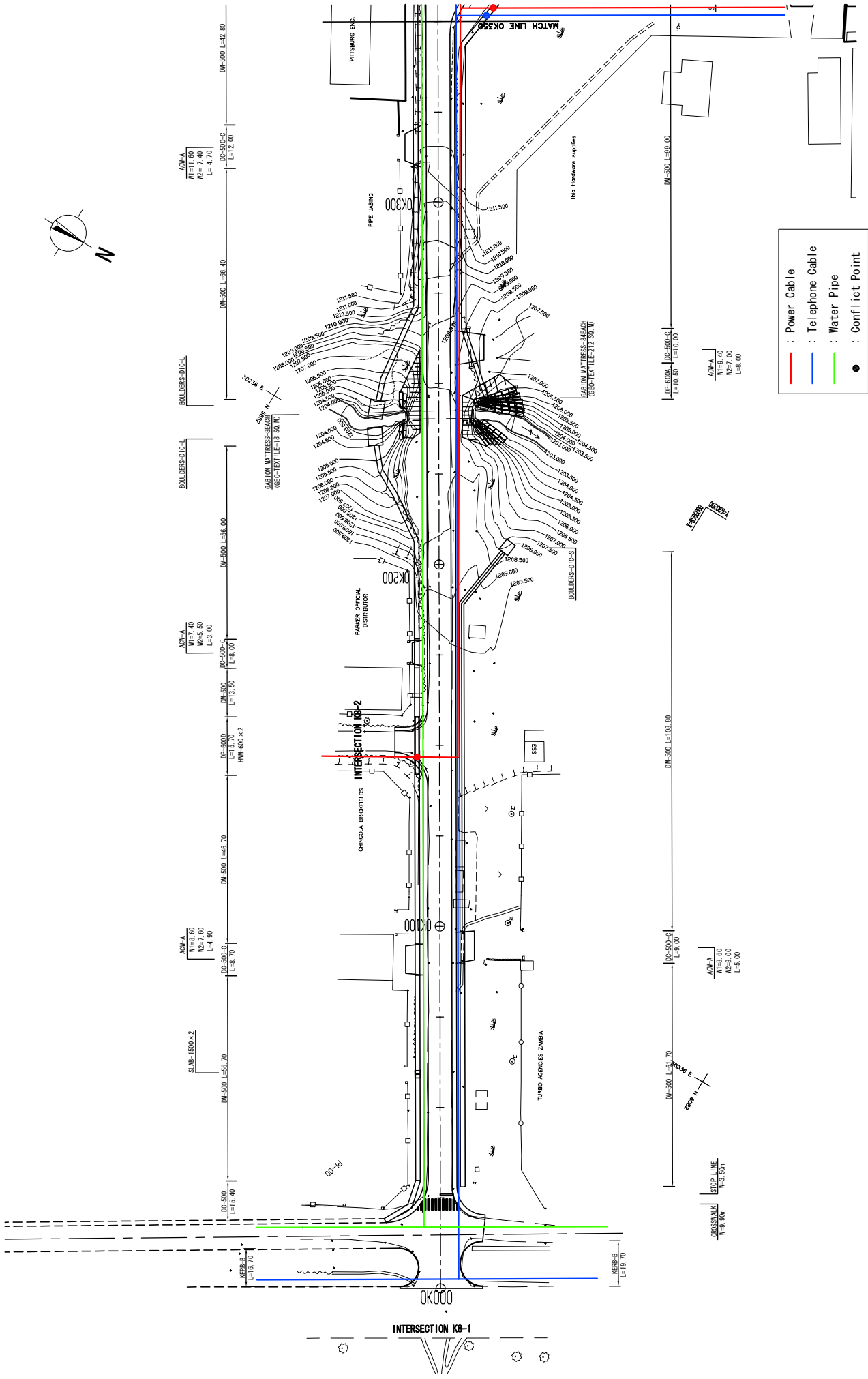
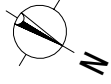
ACM-F
W1=7.30
W2=6.60
L=5.00

ACM-F
W1=7.30
W2=6.00
L=5.00

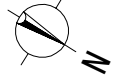
STOP LINE
W10.00M
CROSSWALK
W10.00M

- : Power Cable
- : Telephone Cable
- : Water Pipe
- : Conflict Point

MINISTRY OF LOCAL GOVERNMENT AND HOUSING THE REPUBLIC OF ZAMBIA	JAPAN INTERNATIONAL COOPERATION AGENCY (JICA)	PLAN	SCALE	APPROVED	KATHARA & ENGINEERS INTERNATIONAL JAPAN ENGINEERING CONSULTANTS	PREPARED	DATE	SHEET NO
						CHECKED		
BASIC DESIGN FOR THE PROJECT FOR IMPROVEMENT AND MAINTENANCE OF NIDOLA AND KITWE CITY ROADS IN THE REPUBLIC OF ZAMBIA		K7: KANTANTA STREET(6/77)		S=1:500				



MINISTRY OF LOCAL GOVERNMENT AND HOUSING THE REPUBLIC OF ZAMBIA	JAPAN INTERNATIONAL COOPERATION AGENCY (JICA)	PLAN	SCALE	APPROVED	PREPARED	DATE	SHEET NO
					DATE		
BASIC DESIGN FOR THE PROJECT FOR IMPROVEMENT AND MAINTENANCE OF NDUOLA AND KITWE CITY ROADS IN THE REPUBLIC OF ZAMBIA		K8: NATWANGE ROAD (1/3)		KATHARA & ENGINEERS INTERNATIONAL JAPAN ENGINEERING CONSULTANTS		PL-55	



STOP LINE
W=5.40m

DP-5000
L=10.00

SLAB 1500x2
DM-500 L=53.50

ACW-A
W1=9.00
W2=7.90
L=5.00

20936 E
20936 N

SLAB FIRE RAILWAY CROSSING
FOR GARRISEWAY W=9.10

STOP LINE
W=3.10m

DM-500
L=18.00

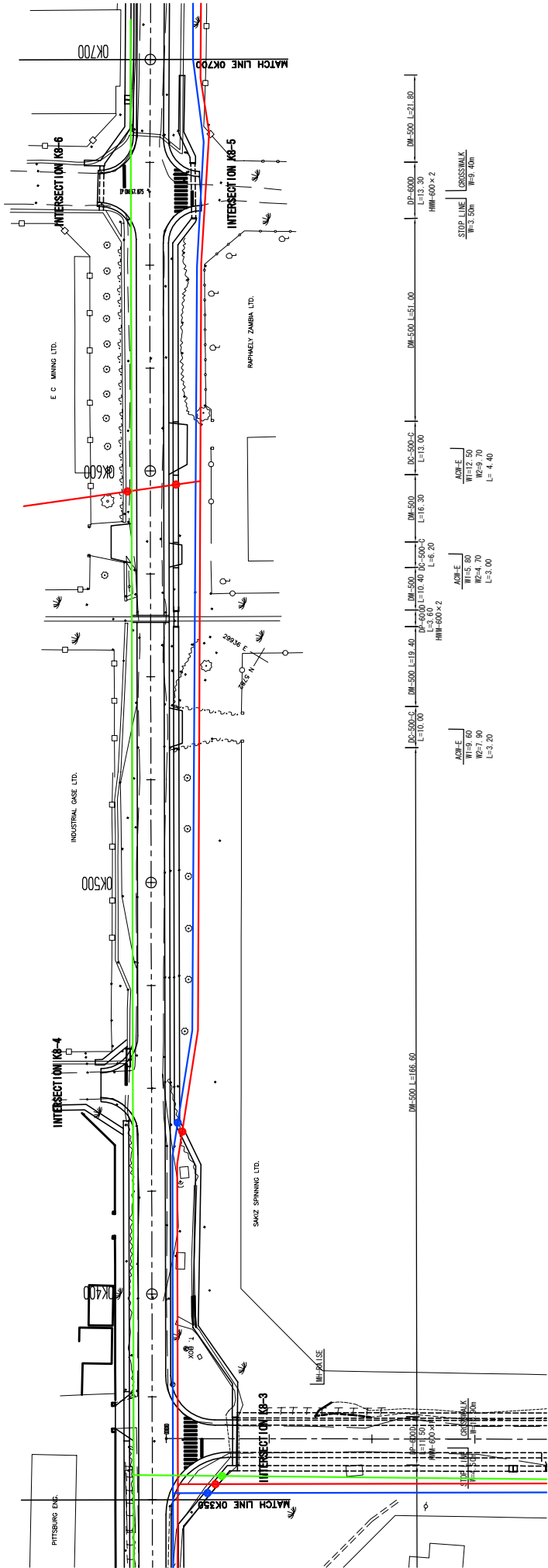
DP-5000
L=4.30
HM=600x1

ACW-A
W1=12.00
W2=5.50
L=4.40

DC-500-C
L=12.00

DM-500 L=42.80

DM-500 L=66.80



ACW-E
W1=5.00
W2=7.90
L=3.20

ACW-L
W1=5.00
W2=4.70
L=3.00

ACW-F
W1=5.00
W2=9.70
L=4.40

STOP LINE
W=3.50m

CROSSWALK
W=3.40m

DM-500 L=166.80

DC-500-C L=10.00

DM-500 L=19.40

DM-500 L=10.40

DC-500-C L=6.20

DM-500 L=16.30

DC-500-C L=13.00

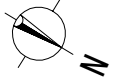
DM-500 L=51.00

DP-5000 L=13.30

DM-500 L=21.80

- : Power Cable
- : Telephone Cable
- : Water Pipe
- : Conflict Point

MINISTRY OF LOCAL GOVERNMENT AND HOUSING THE REPUBLIC OF ZAMBIA	JAPAN INTERNATIONAL COOPERATION AGENCY (JICA)	PLAN	SCALE	APPROVED	KATHARUKA & ENGINEERS INTERNATIONAL JAPAN ENGINEERING CONSULTANTS	PREPARED	DATE	SHEET NO
						CHECKED		
BASIC DESIGN FOR THE PROJECT FOR IMPROVEMENT AND MAINTENANCE OF NDUKA AND KITWE CITY ROADS IN THE REPUBLIC OF ZAMBIA		K8: NATWANGE ROAD (2/3)		S=1:500		DATE		



P. LINE
5.40m

STOP LINE
W=3.80m

CROSSWALK
W=3.80m

AKW-E
W1=7.20
W2=5.20
L=5.00

AKW-A
W1=9.60
W2=6.20
L=5.00

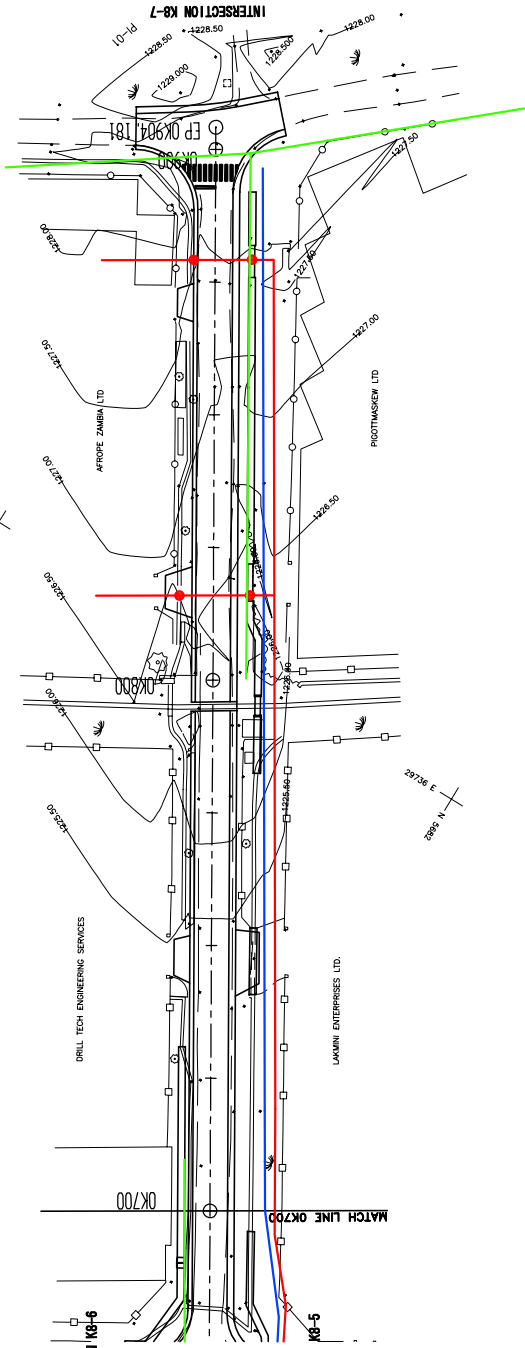
AKW-E
W1=8.80
W2=6.80
L=5.00

AKW-A
W1=9.60
W2=6.20
L=5.00

AKW-E
W1=8.80
W2=6.80
L=5.00

AKW-A
W1=9.60
W2=6.20
L=5.00

SLAB FOR RAILWAY CROSSING
FOR CARRIAGEWAY W=8.60



DM-500 L=51.80

DM-500 L=54.00

DM-500 L=19.10

DM-500 L=18.60

DM-500 L=52.60

DM-500 L=5

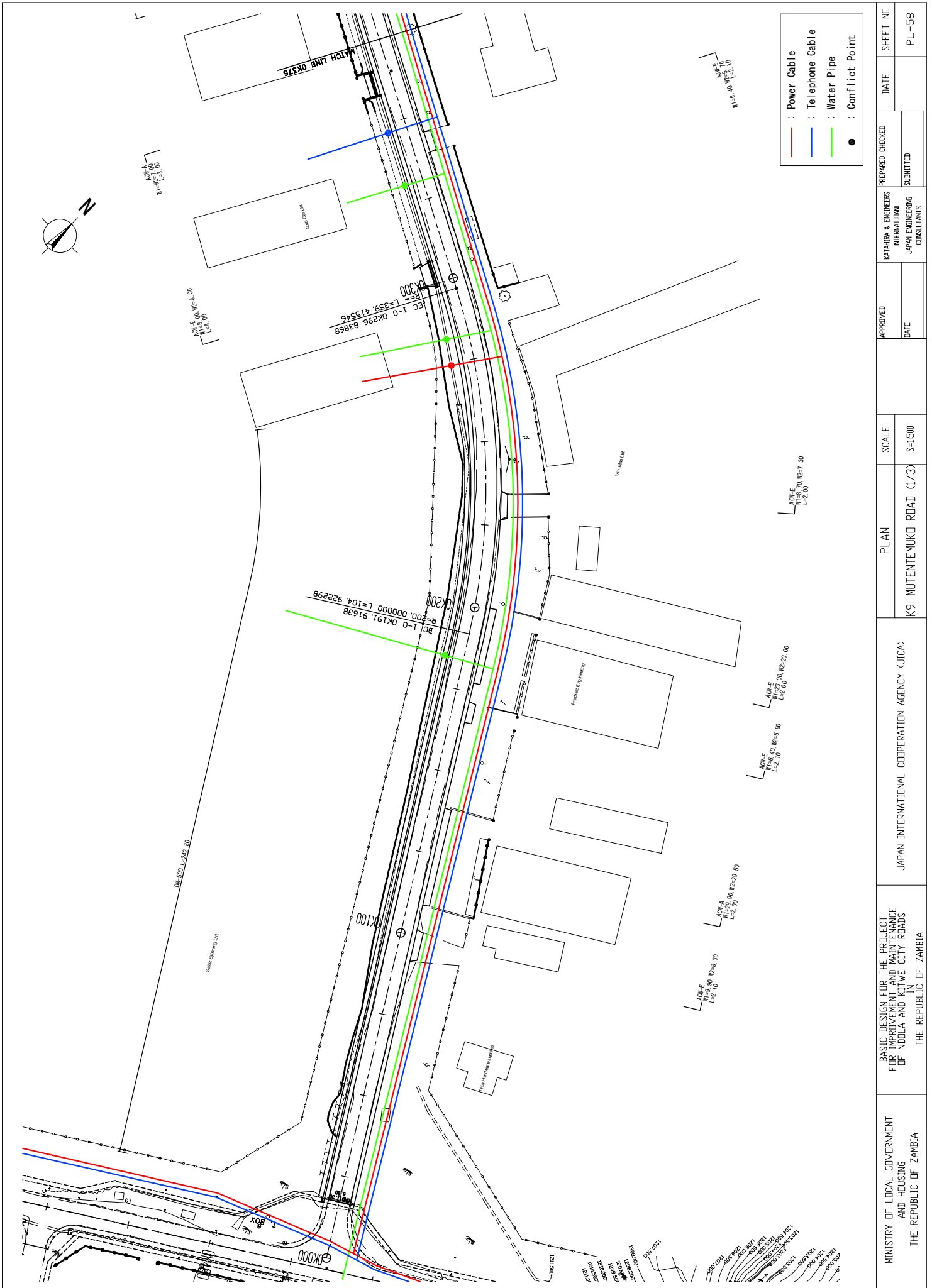
DM-500 L=51.80

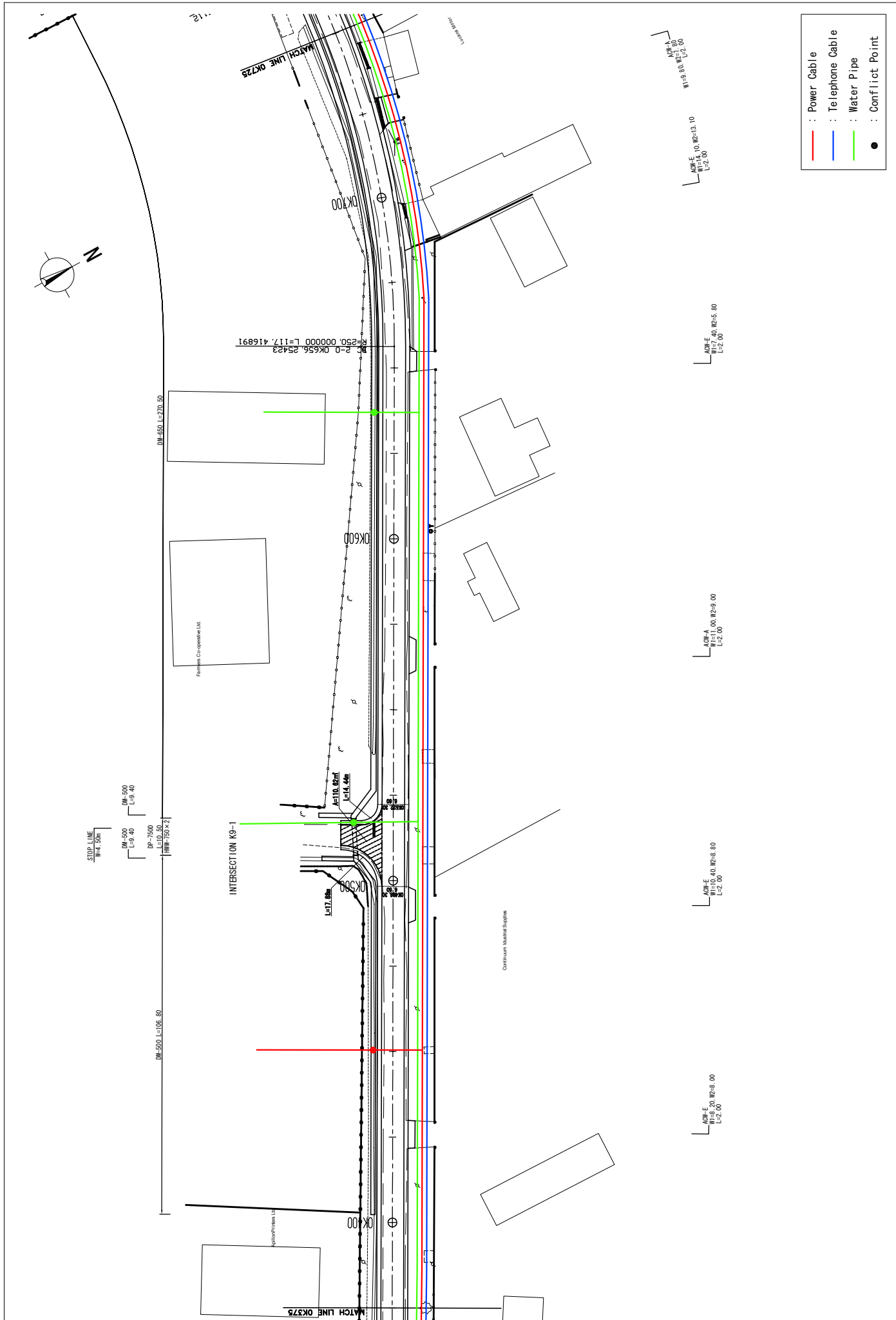
AKW-A
W1=8.80
W2=6.80
L=4.50

ALK
0m

- : Power Cable
- : Telephone Cable
- : Water Pipe
- : Conflict Point

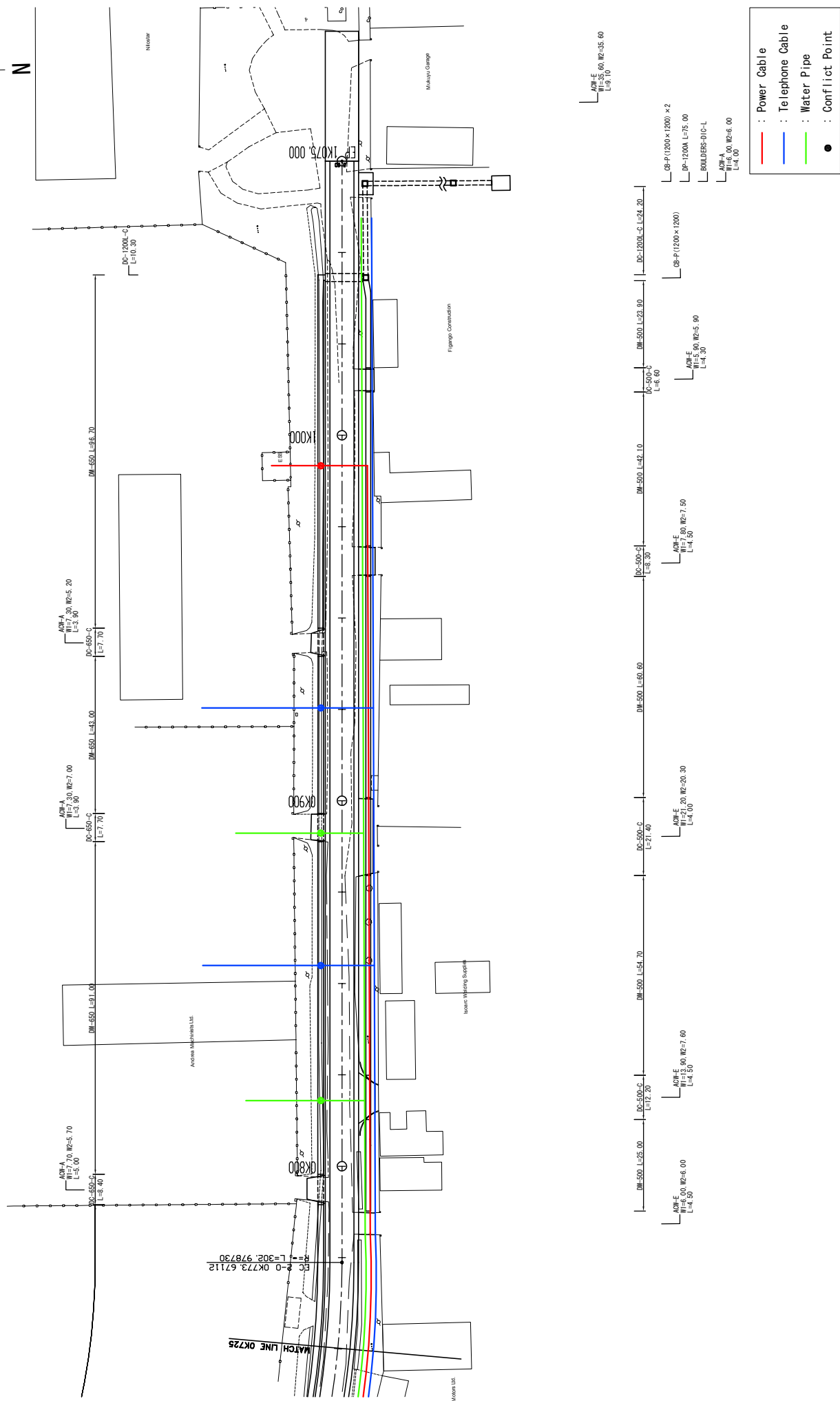
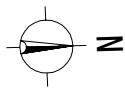
MINISTRY OF LOCAL GOVERNMENT AND HOUSING THE REPUBLIC OF ZAMBIA	BASIC DESIGN FOR THE PROJECT FOR IMPROVEMENT AND MAINTENANCE OF NIDOLA AND KITWE CITY ROADS IN THE REPUBLIC OF ZAMBIA	JAPAN INTERNATIONAL COOPERATION AGENCY (JICA)	PLAN	SCALE S=1/500	APPROVED DATE	KATAHARA & ENGINEERS INTERNATIONAL JAPAN ENGINEERING CONSULTANTS	PREPARED	CHECKED	DATE	SHEET NO
							SUBMITTED			PL-57





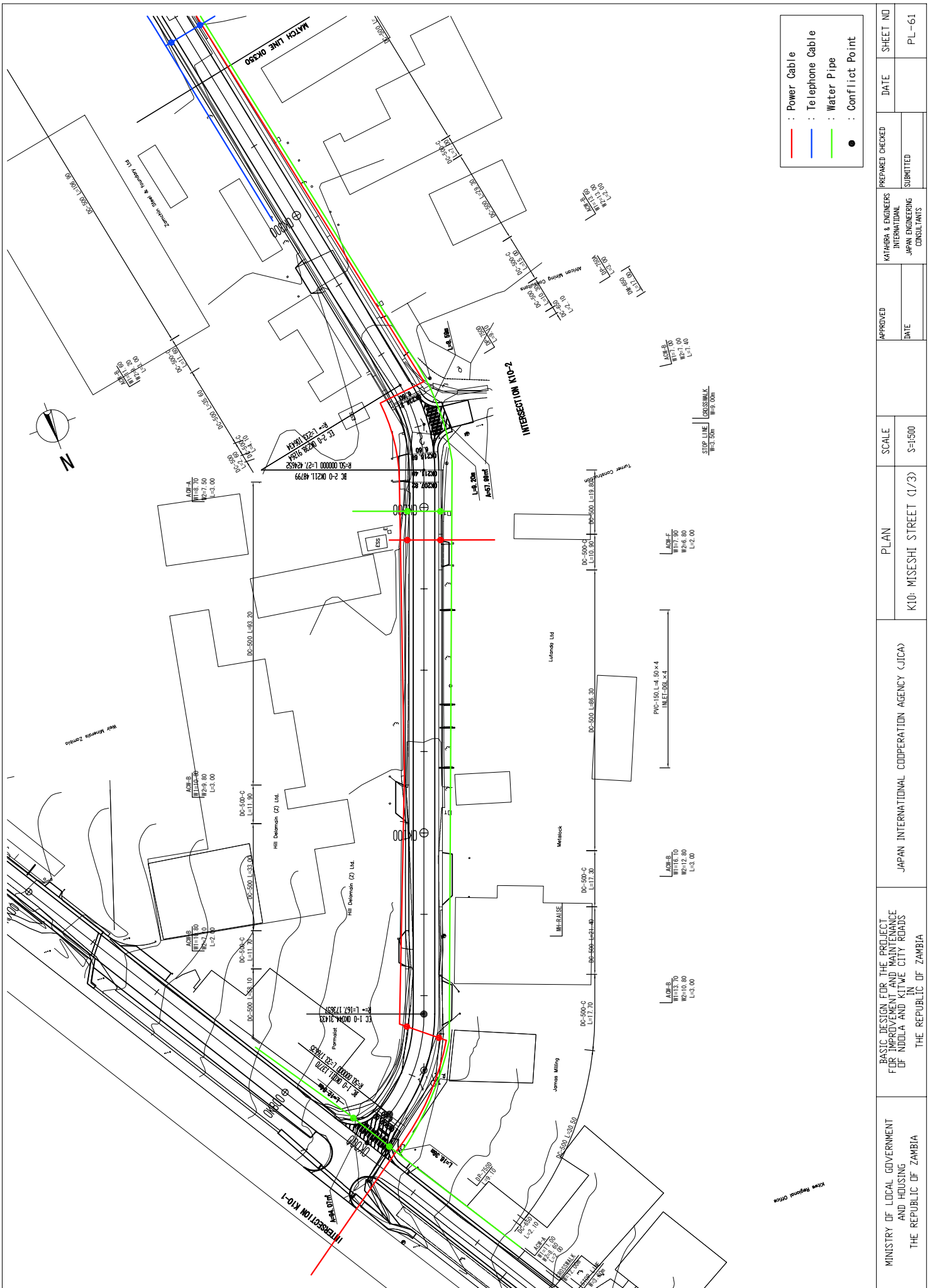
MINISTRY OF LOCAL GOVERNMENT AND HOUSING THE REPUBLIC OF ZAMBIA	BASIC DESIGN FOR THE PROJECT FOR IMPROVEMENT AND MAINTENANCE OF NDUOLA AND KITWE CITY ROADS IN THE REPUBLIC OF ZAMBIA	JAPAN INTERNATIONAL COOPERATION AGENCY (JICA)	PLAN K9: MUTENTEMUKO ROAD(2/3)	SCALE S=1:500	APPROVED	KATAHIRA & ENGINEERS INTERNATIONAL JAPAN ENGINEERING CONSULTANTS	PREPARED	DATE	SHEET NO
					DATE		SUBMITTED	PL-59	

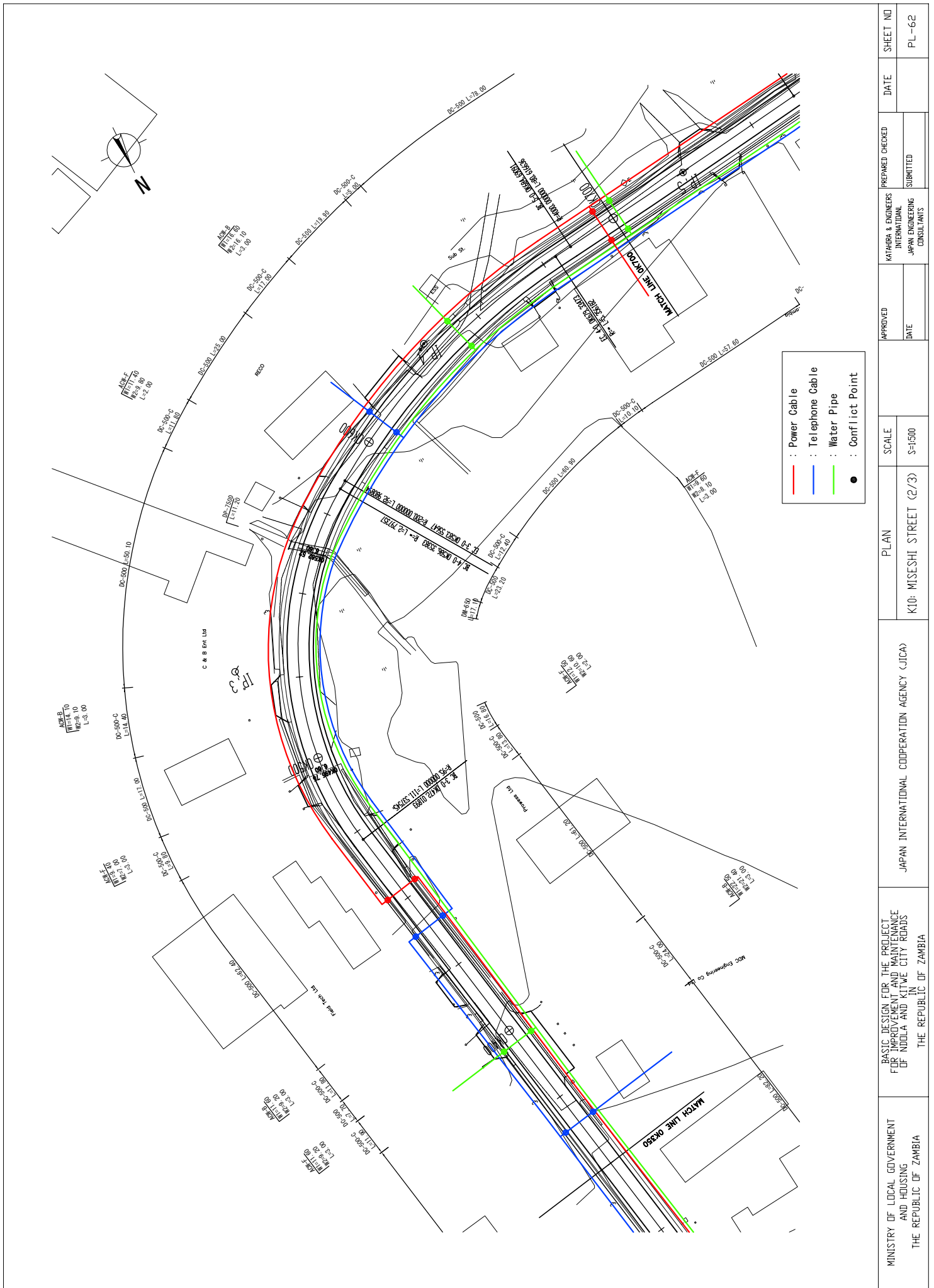
- : Power Cable
- : Telephone Cable
- : Water Pipe
- : Conflict Point



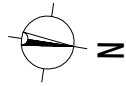
- : Power Cable
- : Telephone Cable
- : Water Pipe
- : Conflict Point

MINISTRY OF LOCAL GOVERNMENT AND HOUSING THE REPUBLIC OF ZAMBIA	JAPAN INTERNATIONAL COOPERATION AGENCY (JICA)	PLAN	SCALE	APPROVED	KATHARUKA & ENGINEERS INTERNATIONAL JAPAN ENGINEERING CONSULTANTS	PREPARED	CHECKED	DATE	SHEET NO
						SUBMITTED	DATE	PL-60	

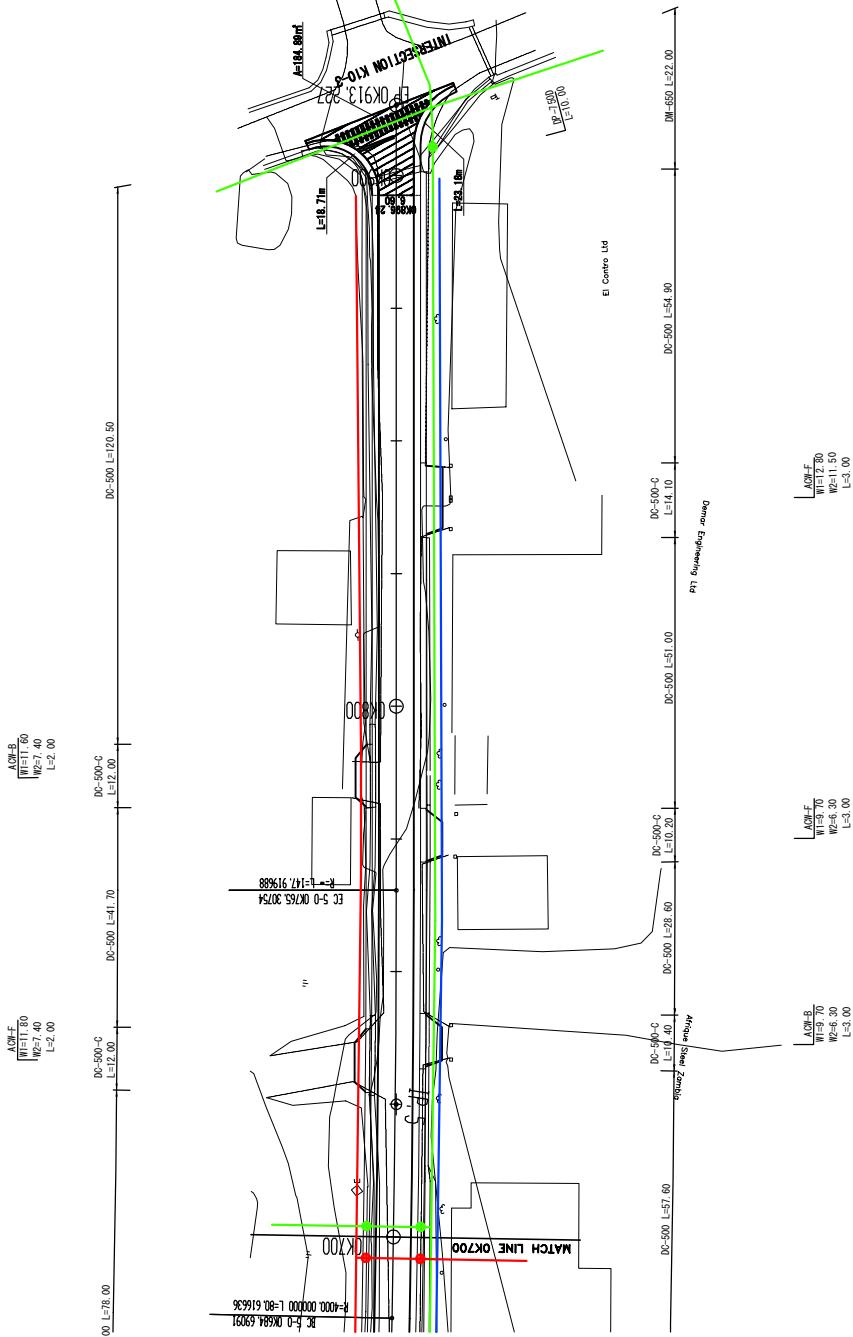




MINISTRY OF LOCAL GOVERNMENT AND HOUSING THE REPUBLIC OF ZAMBIA	BASIC DESIGN FOR THE PROJECT FOR IMPROVEMENT AND MAINTENANCE OF NDUKA AND KITWE CITY ROADS IN THE REPUBLIC OF ZAMBIA	JAPAN INTERNATIONAL COOPERATION AGENCY (JICA)	PLAN	K10: MISESHI STREET (2/3)	SCALE	S=1:500	APPROVED	DATE	KATAHARA & ENGINEERS INTERNATIONAL JAPAN ENGINEERING CONSULTANTS	PREPARED	SHEET NO
										CHECKED	
										SUBMITTED	DATE

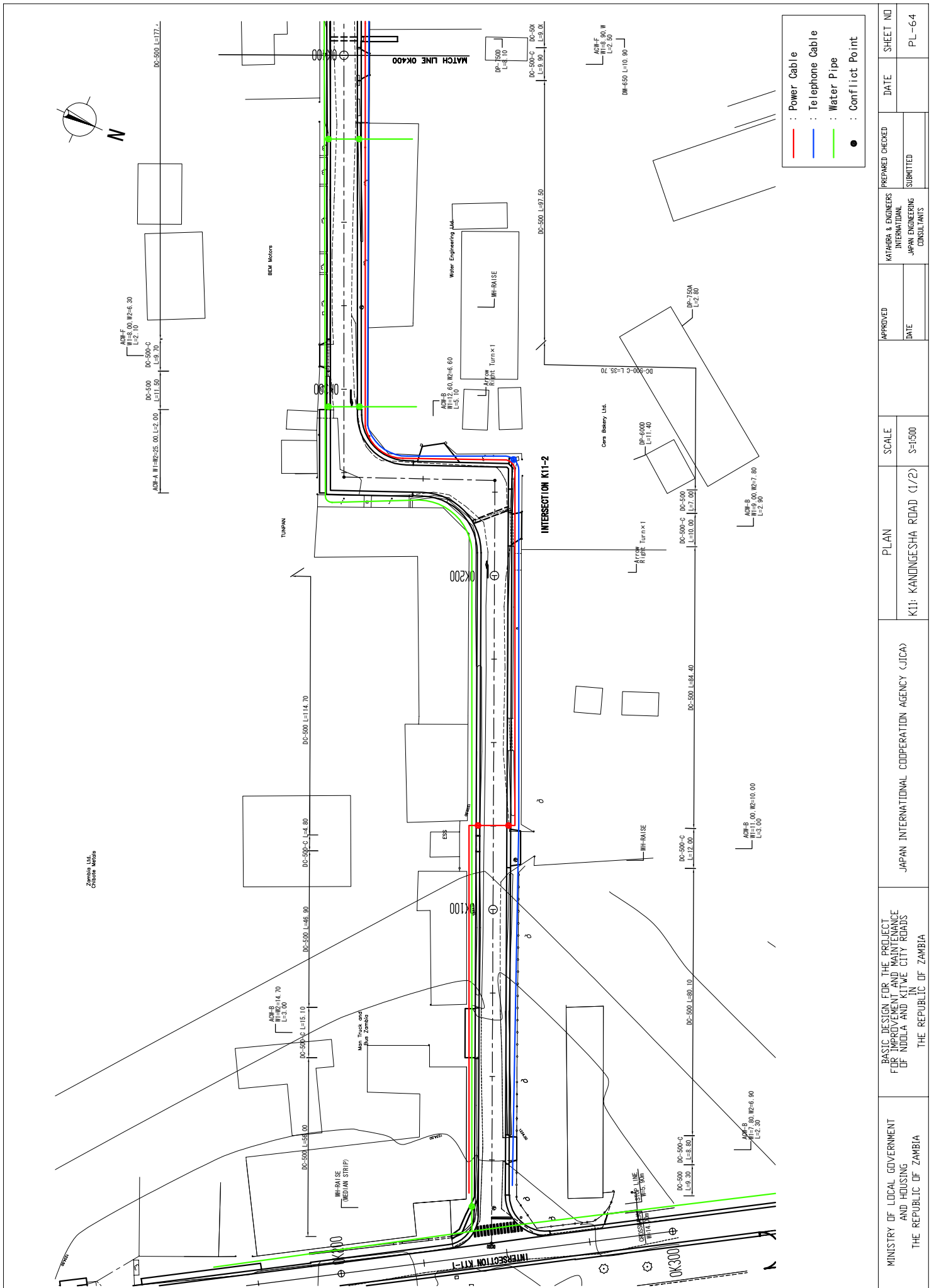


STOP LINE
W=7.00m
CROSSWALK
W=18.00m

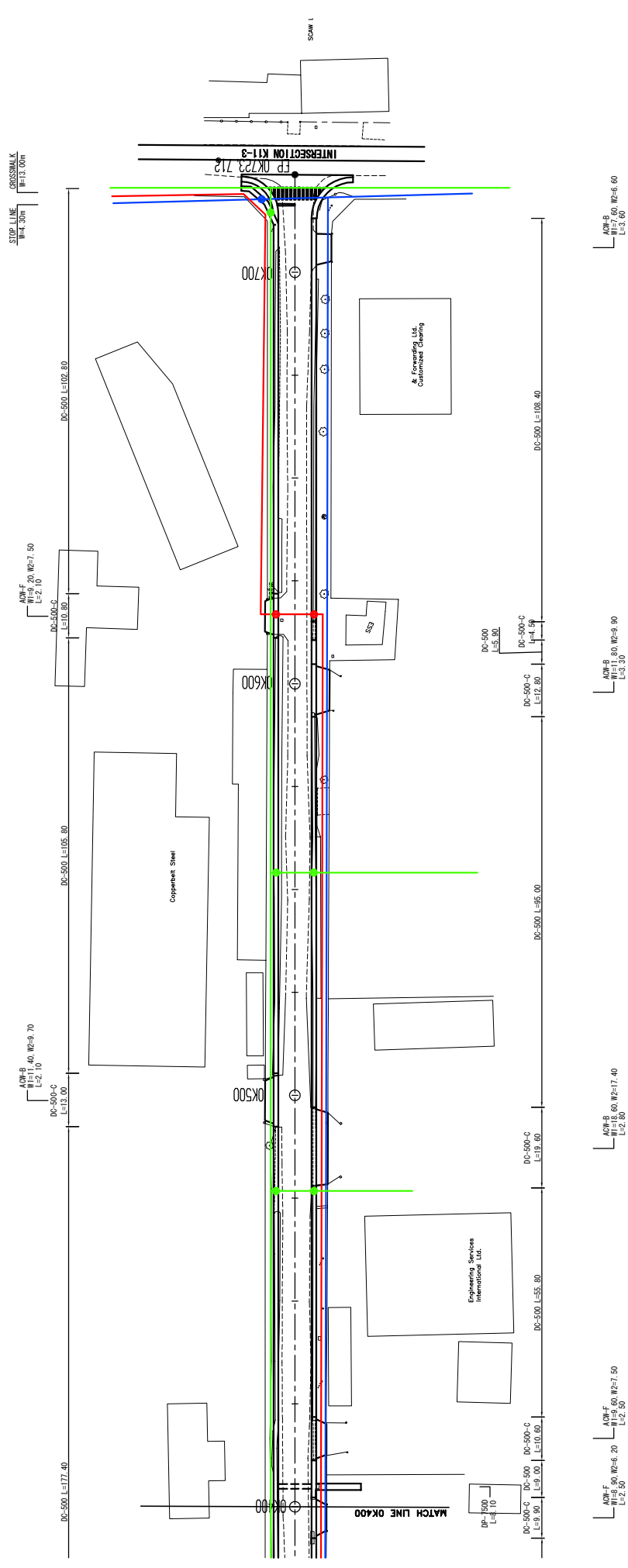
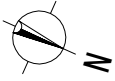


- : Power Cable
- : Telephone Cable
- : Water Pipe
- : Conflict Point

MINISTRY OF LOCAL GOVERNMENT AND HOUSING THE REPUBLIC OF ZAMBIA	BASIC DESIGN FOR THE PROJECT FOR IMPROVEMENT AND MAINTENANCE OF NDUKA AND KITWE CITY ROADS IN THE REPUBLIC OF ZAMBIA	JAPAN INTERNATIONAL COOPERATION AGENCY (JICA)	PLAN	SCALE S=1:500	APPROVED DATE	KATAHARA & ENGINEERS INTERNATIONAL JAPAN ENGINEERING CONSULTANTS	PREPARED	CHECKED	DATE	SHEET NO
							SUBMITTED			PL-63

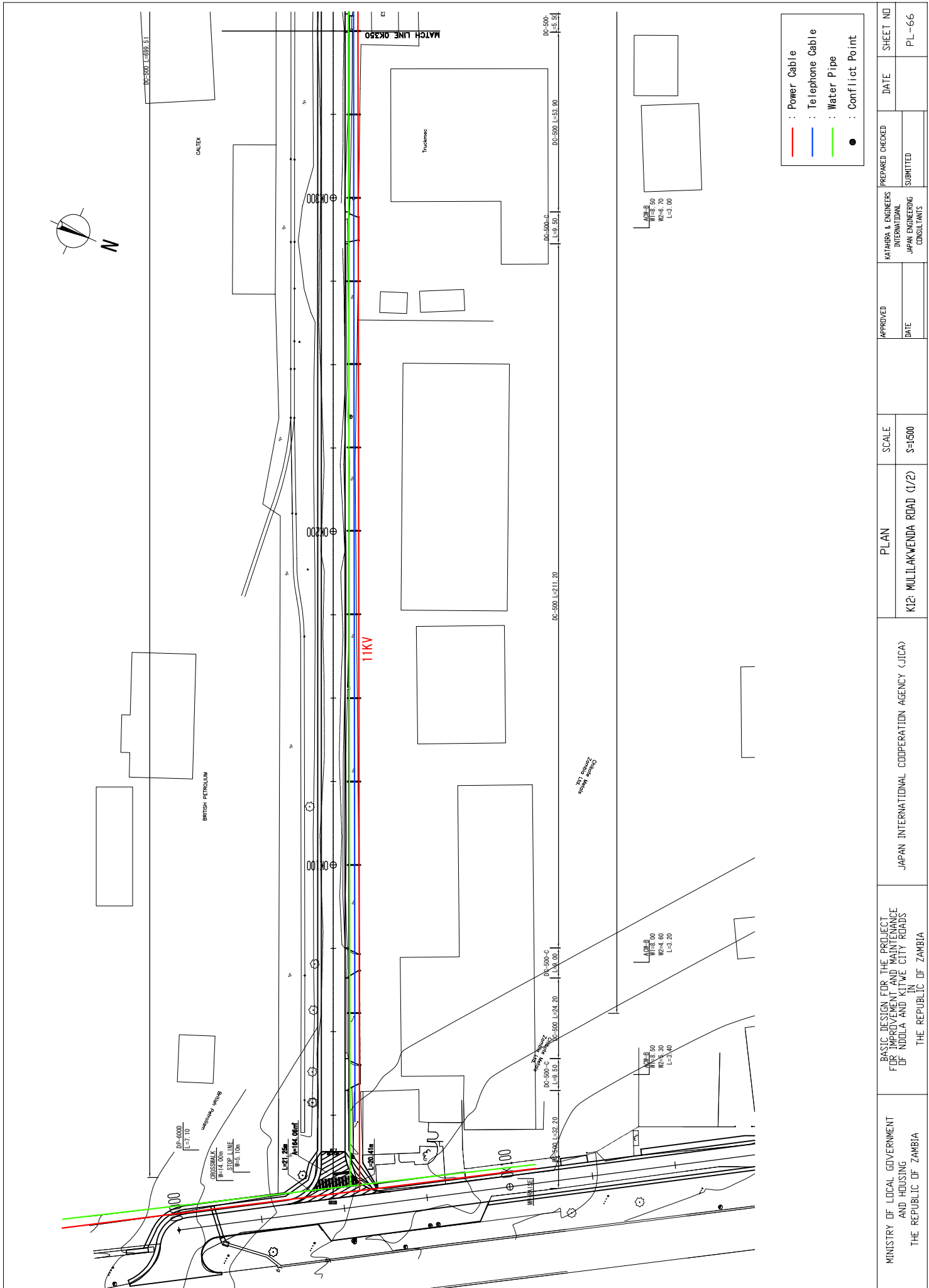


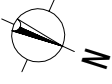
MINISTRY OF LOCAL GOVERNMENT AND HOUSING THE REPUBLIC OF ZAMBIA	JAPAN INTERNATIONAL COOPERATION AGENCY (JICA)	PLAN	SCALE	APPROVED	KATAHARA & ENGINEERS INTERNATIONAL JAPAN ENGINEERING CONSULTANTS	PREPARED	DATE	SHEET NO
						CHECKED		
K11- KANDAGESHA ROAD (1/2)				S-1500	DATE	DATE	PL-64	



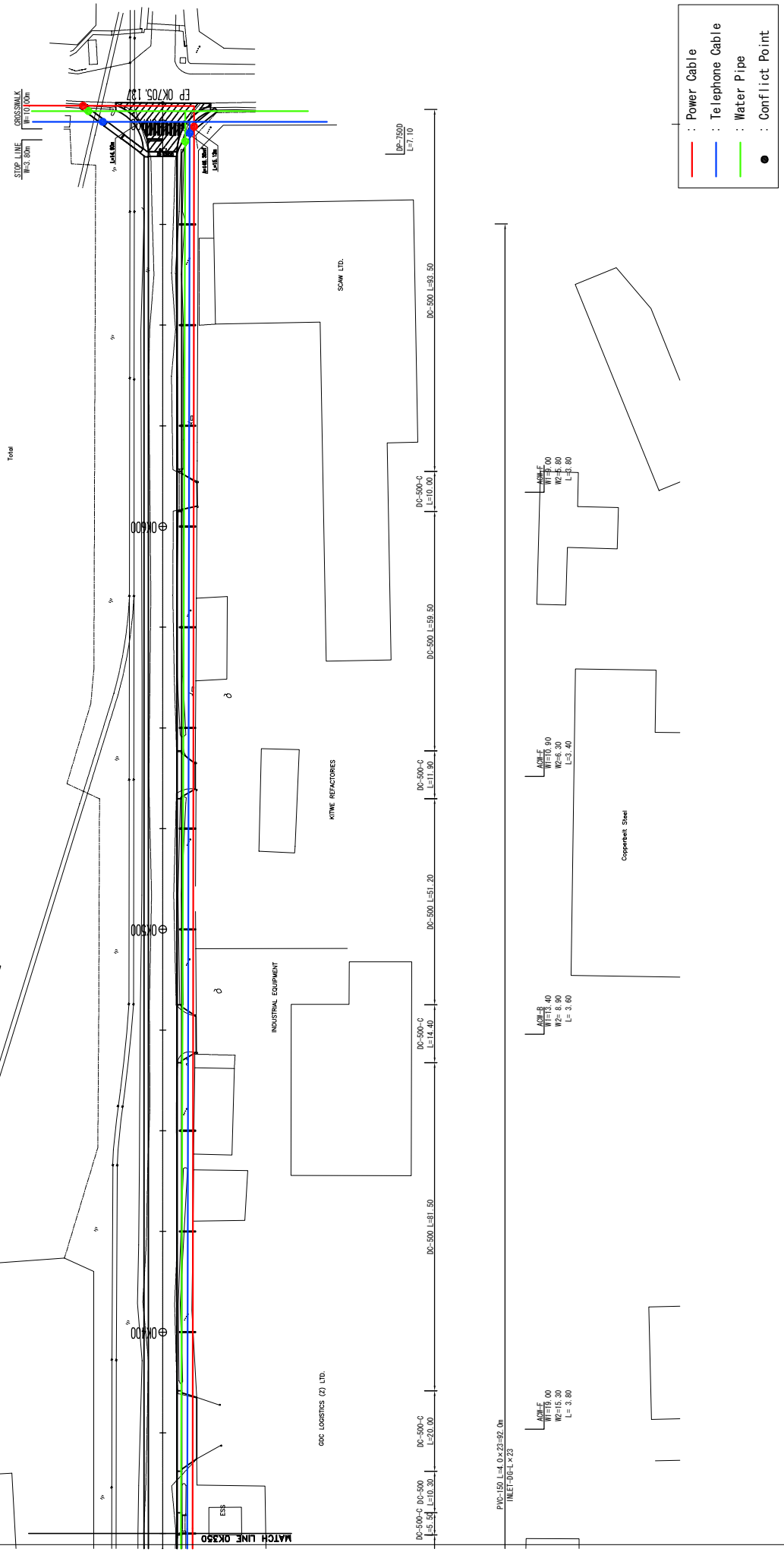
- : Power Cable
- : Telephone Cable
- : Water Pipe
- : Conflict Point

MINISTRY OF LOCAL GOVERNMENT AND HOUSING THE REPUBLIC OF ZAMBIA	BASIC DESIGN FOR THE PROJECT FOR IMPROVEMENT AND MAINTENANCE OF NDUKA AND KITWE CITY ROADS IN THE REPUBLIC OF ZAMBIA	JAPAN INTERNATIONAL COOPERATION AGENCY (JICA)	PLAN	SCALE	APPROVED	KATAHARA & ENGINEERS INTERNATIONAL JAPAN ENGINEERING CONSULTANTS	PREPARED	DATE	SHEET NO
							CHECKED	DATE	PL-65
			K11: KANDAGESHA ROAD (2/2)	S=1:500	DATE		SUBMITTED		



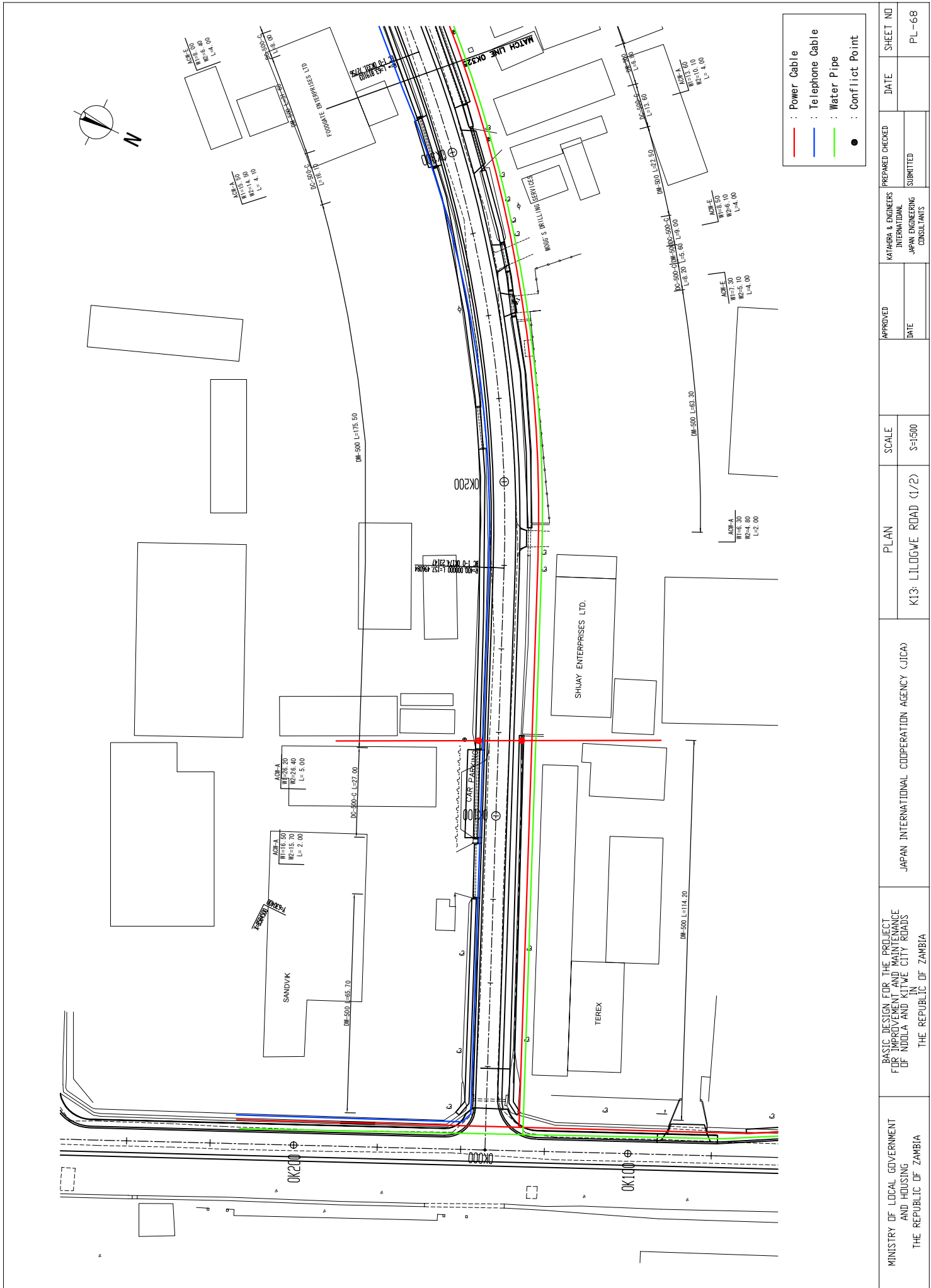


DC-450 DP-450 DP-450
 L=1.20 L=5.10 L=1.60
 DP-750 DP-750
 L=6.00 L=6.00
 HWC-750x2 HWC-750x2



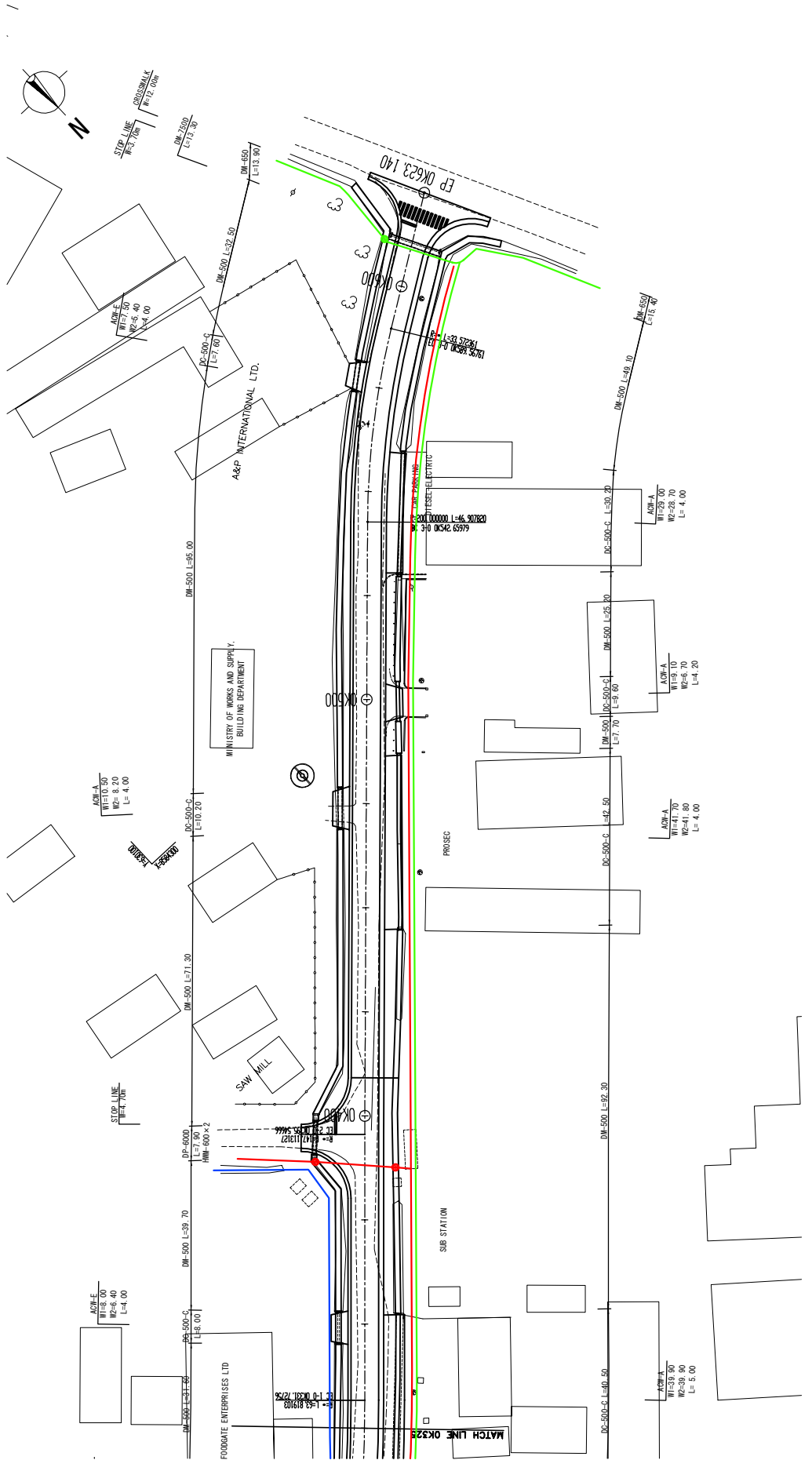
- : Power Cable
- : Telephone Cable
- : Water Pipe
- : Conflict Point

MINISTRY OF LOCAL GOVERNMENT AND HOUSING THE REPUBLIC OF ZAMBIA	JAPAN INTERNATIONAL COOPERATION AGENCY (JICA)	PLAN	SCALE	APPROVED	KATAHIRA & ENGINEERS INTERNATIONAL JAPAN ENGINEERING CONSULTANTS	PREPARED	DATE	SHEET NO
						CHECKED	DATE	PL-67
BASIC DESIGN FOR THE PROJECT FOR IMPROVEMENT AND MAINTENANCE OF NDUKA AND KITWE CITY ROADS IN THE REPUBLIC OF ZAMBIA		K12: MULILAKWENDA ROAD (2/2)		DATE		SUBMITTED		



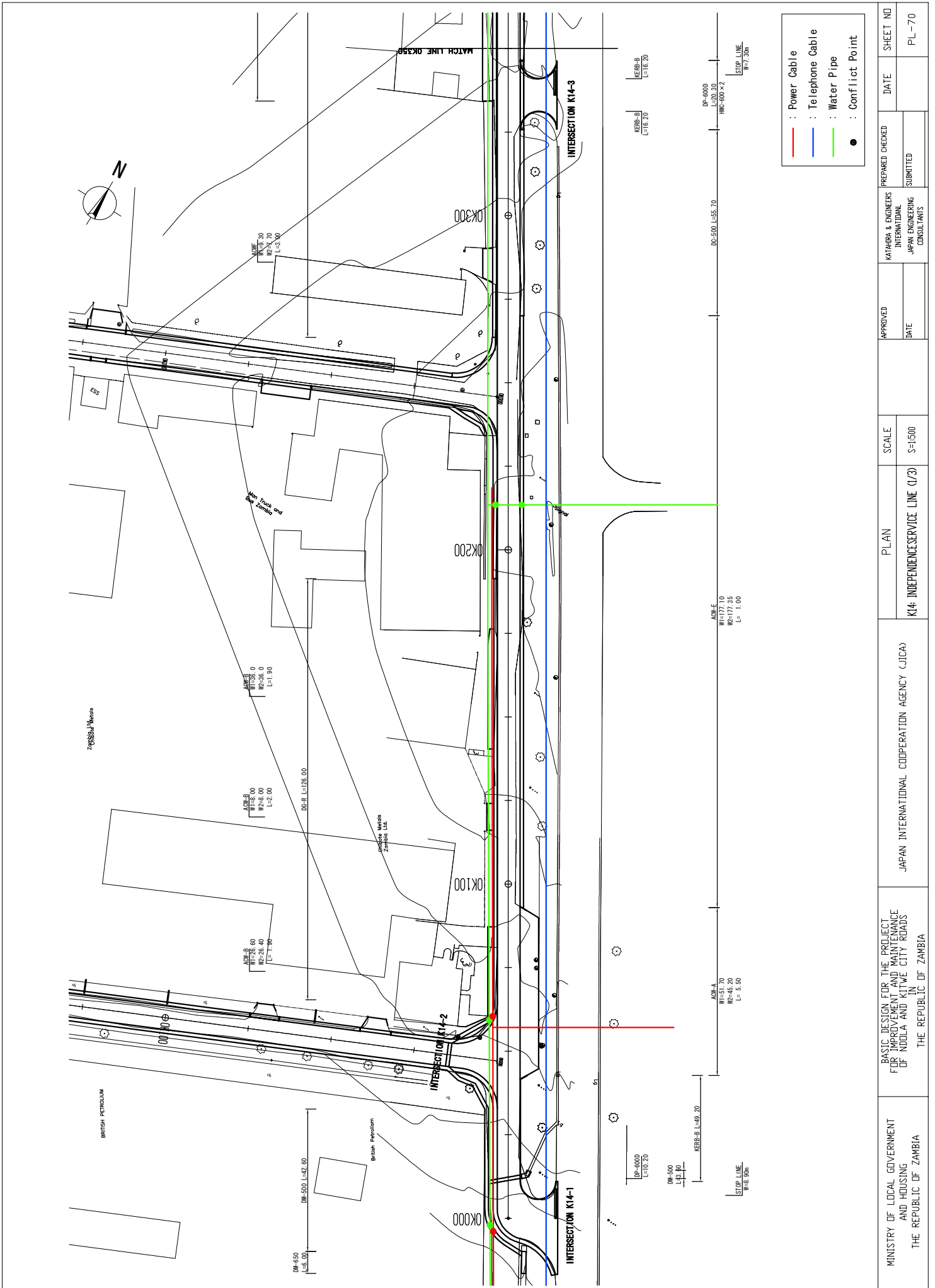
- : Power Cable
- : Telephone Cable
- : Water Pipe
- : Conflict Point

MINISTRY OF LOCAL GOVERNMENT AND HOUSING THE REPUBLIC OF ZAMBIA	BASIC DESIGN FOR THE PROJECT FOR IMPROVEMENT AND MAINTENANCE OF NDUKA AND KITWE CITY ROADS IN THE REPUBLIC OF ZAMBIA	JAPAN INTERNATIONAL COOPERATION AGENCY (JICA)	PLAN	SCALE	APPROVED	K13: LILGWE ROAD (1/2)	S=1:500	DATE	SHEET NO	PREPARED	DATE	SHEET NO
										CHECKED	DATE	PL-68
										KATAHARA & ENGINEERS INTERNATIONAL JAPAN ENGINEERING CONSULTANTS		
										SUBMITTED		



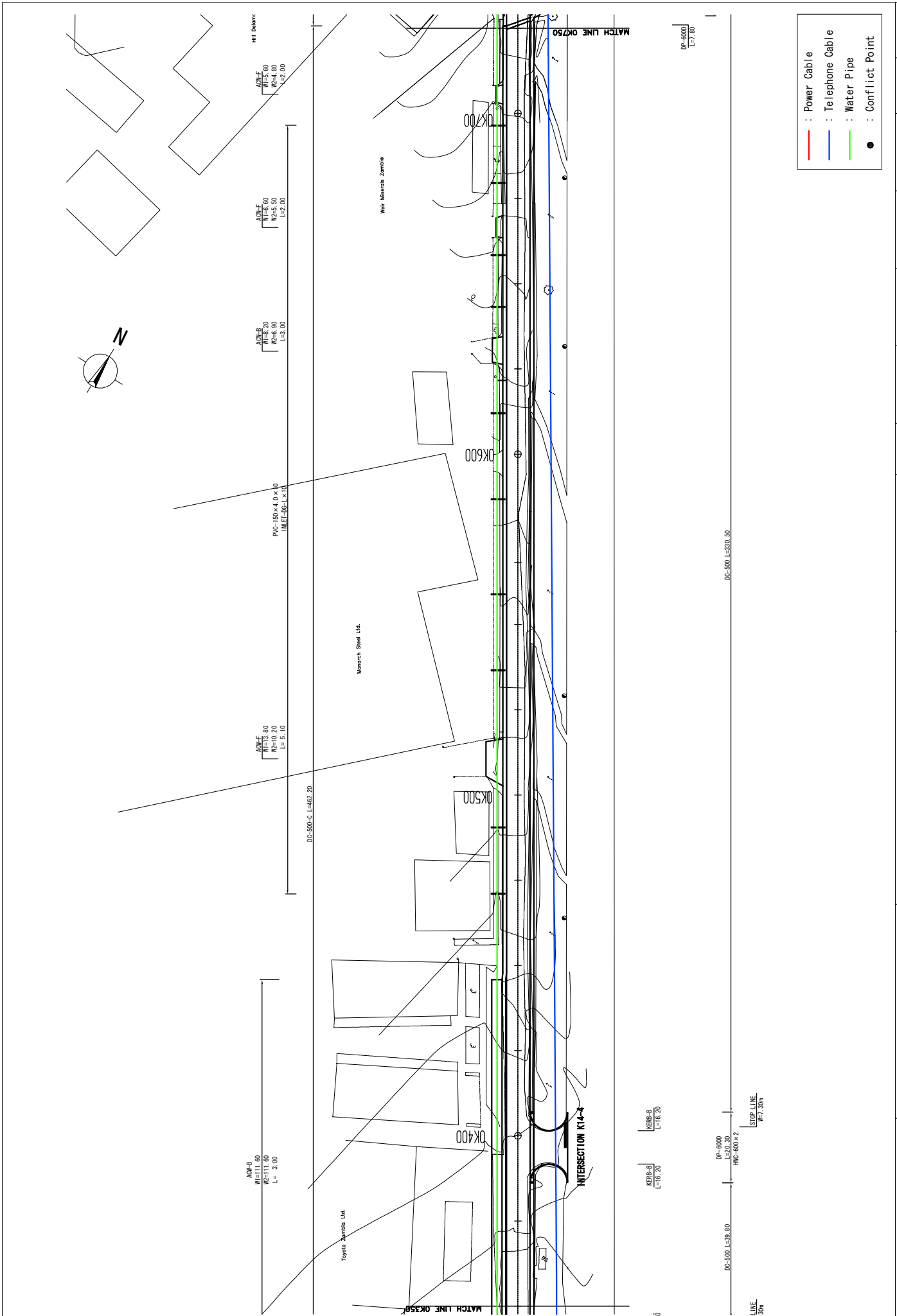
- : Power Cable
- : Telephone Cable
- : Water Pipe
- : Conflict Point

MINISTRY OF LOCAL GOVERNMENT AND HOUSING THE REPUBLIC OF ZAMBIA	BASIC DESIGN FOR THE PROJECT FOR IMPROVEMENT AND MAINTENANCE OF NIDOLA AND KITWE CITY ROADS IN THE REPUBLIC OF ZAMBIA	JAPAN INTERNATIONAL COOPERATION AGENCY (JICA)	PLAN	SCALE S=1:500	APPROVED DATE	KATAHARA & ENGINEERS INTERNATIONAL JAPAN ENGINEERING CONSULTANTS	PREPARED	DATE	SHEET NO
							CHECKED	DATE	PL-69

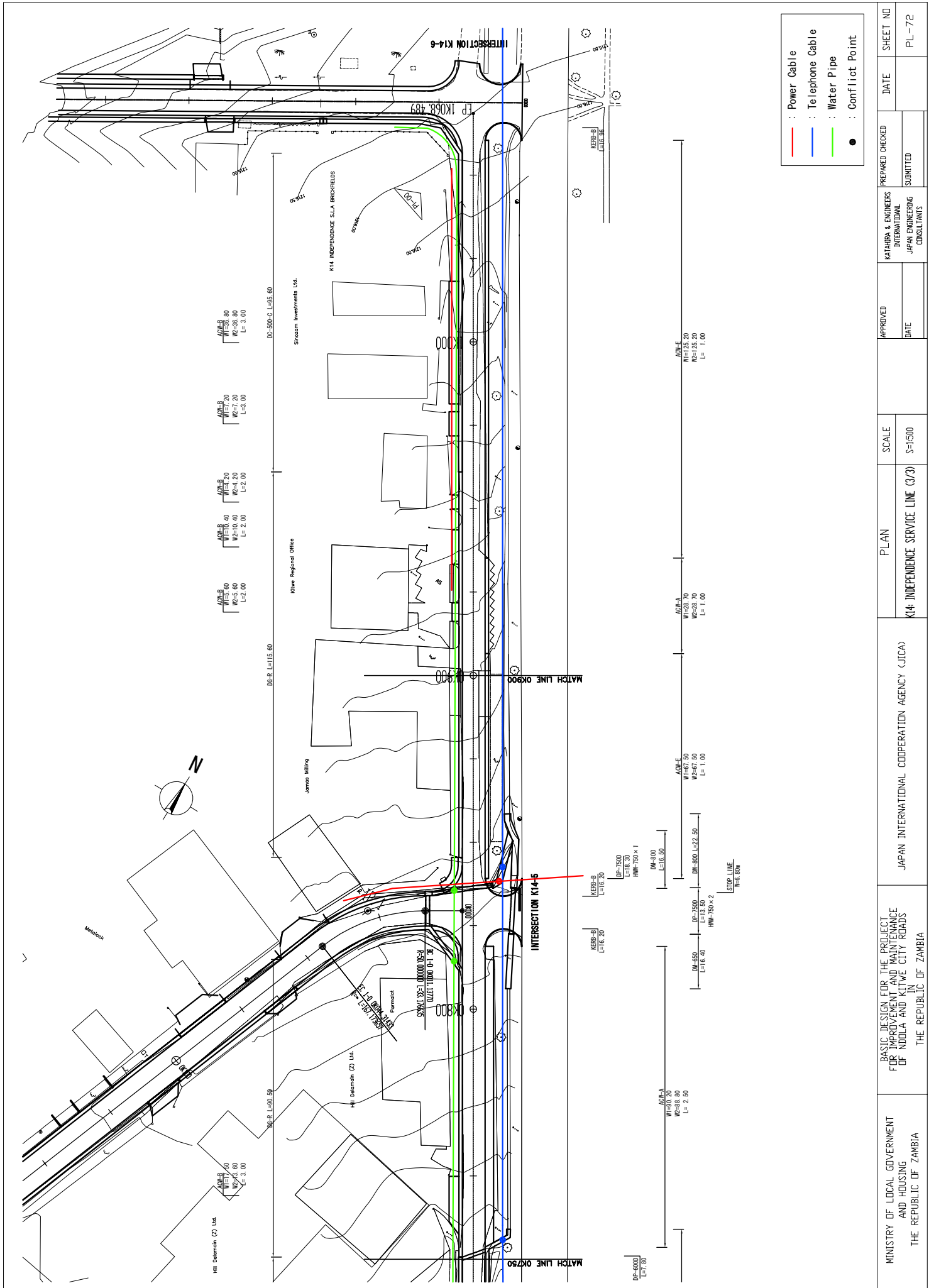


- : Power Cable
- : Telephone Cable
- : Water Pipe
- : Conflict Point

MINISTRY OF LOCAL GOVERNMENT AND HOUSING THE REPUBLIC OF ZAMBIA	BASIC DESIGN FOR THE PROJECT FOR IMPROVEMENT AND MAINTENANCE OF NDOULA AND KITWE CITY ROADS IN THE REPUBLIC OF ZAMBIA	JAPAN INTERNATIONAL COOPERATION AGENCY (JICA)	PLAN	SCALE	APPROVED		KATAHARA & ENGINEERS INTERNATIONAL JAPAN ENGINEERING CONSULTANTS	PREPARED / CHECKED	DATE	SHEET NO
					DATE					PL-70
			K14: INDEPENDENCE SERVICE LINE (1/3)	S=1:500						



MINISTRY OF LOCAL GOVERNMENT AND HOUSING THE REPUBLIC OF ZAMBIA	BASIC DESIGN FOR THE PROJECT FOR IMPROVEMENT AND MAINTENANCE OF NDUOLA AND KITWE CITY ROADS IN THE REPUBLIC OF ZAMBIA	JAPAN INTERNATIONAL COOPERATION AGENCY (JICA)	PLAN	SCALE	APPROVED	K14: INDEPENDENCE SERVICE LINE (2/3) S=1/500	DATE	PREPARED	SHEET NO
								CHECKED	PL-71
								KATAHARA & ENGINEERS INTERNATIONAL JAPAN ENGINEERING CONSULTANTS	
								DATE	



MINISTRY OF LOCAL GOVERNMENT AND HOUSING THE REPUBLIC OF ZAMBIA	BASIC DESIGN FOR THE PROJECT FOR IMPROVEMENT AND MAINTENANCE OF NDUKA AND KITWE CITY ROADS IN THE REPUBLIC OF ZAMBIA	JAPAN INTERNATIONAL COOPERATION AGENCY (JICA)	PLAN	SCALE S=1:500	APPROVED	KATAHARA & ENGINEERS INTERNATIONAL JAPAN ENGINEERING CONSULTANTS	PREPARED	DATE	SHEET NO
					DATE		SUBMITTED	PL-72	