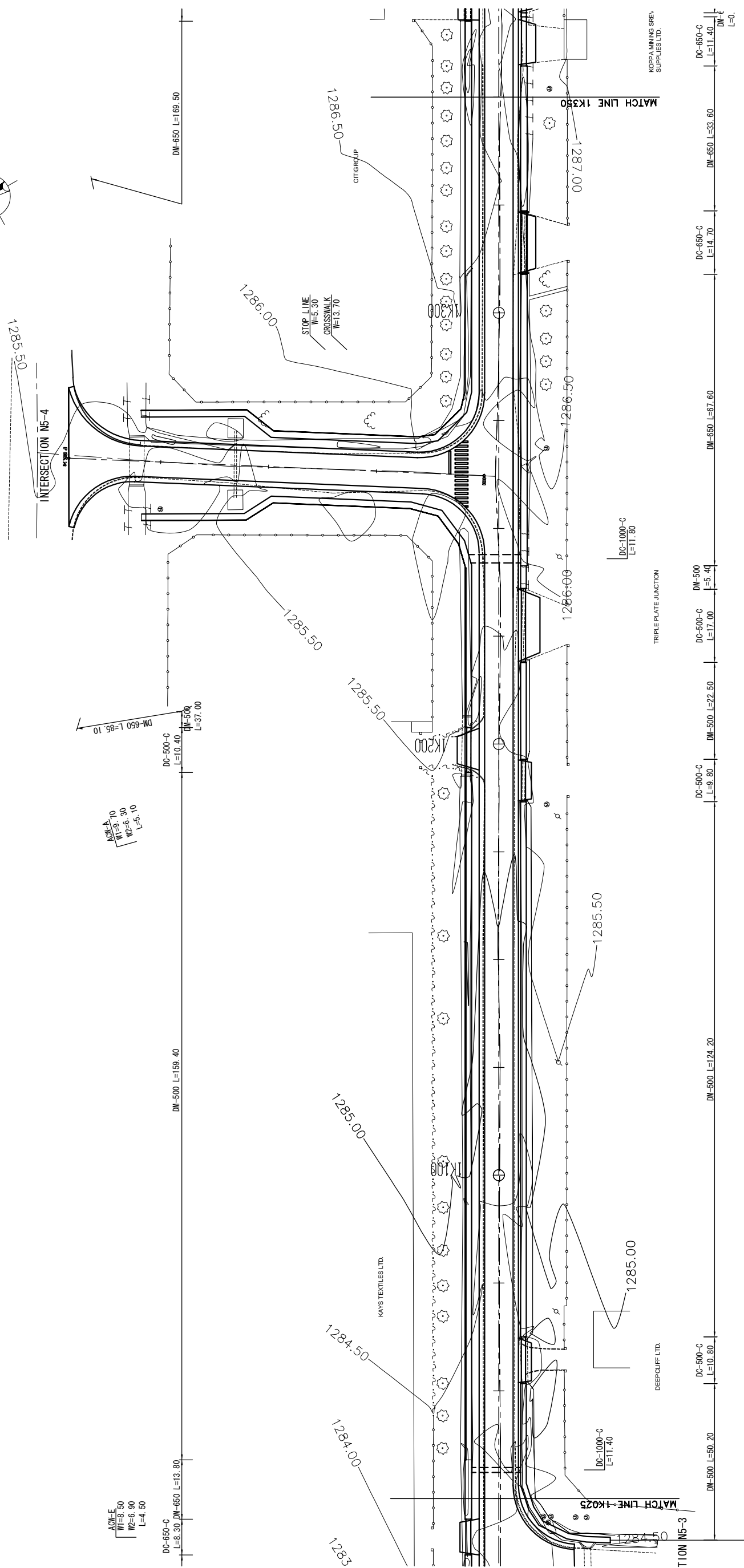
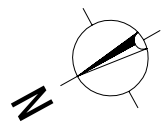
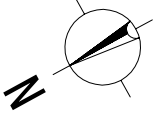


MINISTRY OF LOCAL GOVERNMENT AND HOUSING THE REPUBLIC OF ZAMBIA	JAPAN INTERNATIONAL COOPERATION AGENCY (JICA)	PLAN	SCALE	APPROVED	KATAHIRA & ENGINEERS INTERNATIONAL JAPAN ENGINEERING CONSULTANTS	PREPARED	DATE	SHEET NO
						CHECKED		
BASIC DESIGN FOR THE PROJECT FOR IMPROVEMENT AND MAINTENANCE OF NDOLA AND KITWE CITY ROADS IN THE REPUBLIC OF ZAMBIA		N5: ZAMBIA ROAD (3/7)		DATE	DATE	SUBMITTED		



AOW-E W1=8.50 W2=6.90 L=4.50	AOW-A W1=16.80 W2=12.80 L=5.00	AOW-A W1=16.80 W2=12.80 L=5.00	AOW-A W1=14.10 W2=12.00 L=4.00	AOW-A W1=10.50 W2=7.90 L=6.00
---------------------------------------	---	---	---	--

MINISTRY OF LOCAL GOVERNMENT AND HOUSING THE REPUBLIC OF ZAMBIA	BASIC DESIGN FOR THE PROJECT FOR IMPROVEMENT AND MAINTENANCE OF NDOLA AND KITWE CITY ROADS IN THE REPUBLIC OF ZAMBIA	JAPAN INTERNATIONAL COOPERATION AGENCY (JICA)	PLAN	SCALE S=1:500	APPROVED DATE	KATAHIRA & ENGINEERS INTERNATIONAL JAPAN ENGINEERING CONSULTANTS	PREPARED CHECKED	DATE	SHEET NO
							SUBMITTED		PL-16

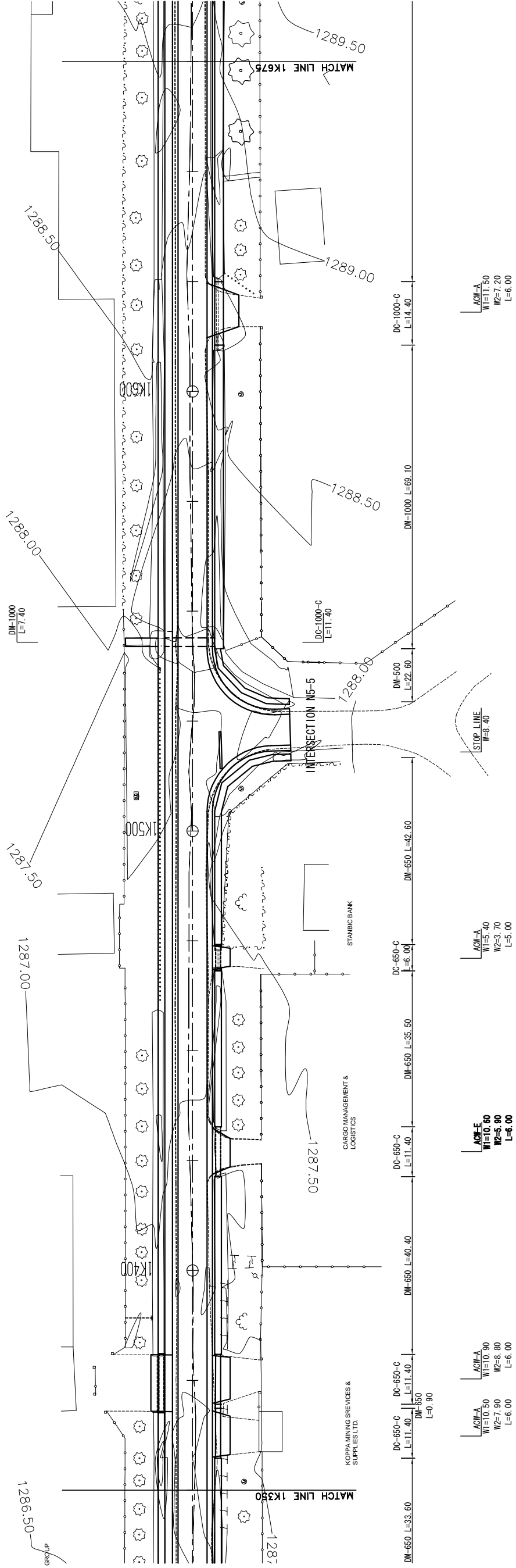


ACW-A
W=12.90
W2=12.90
L=4.90

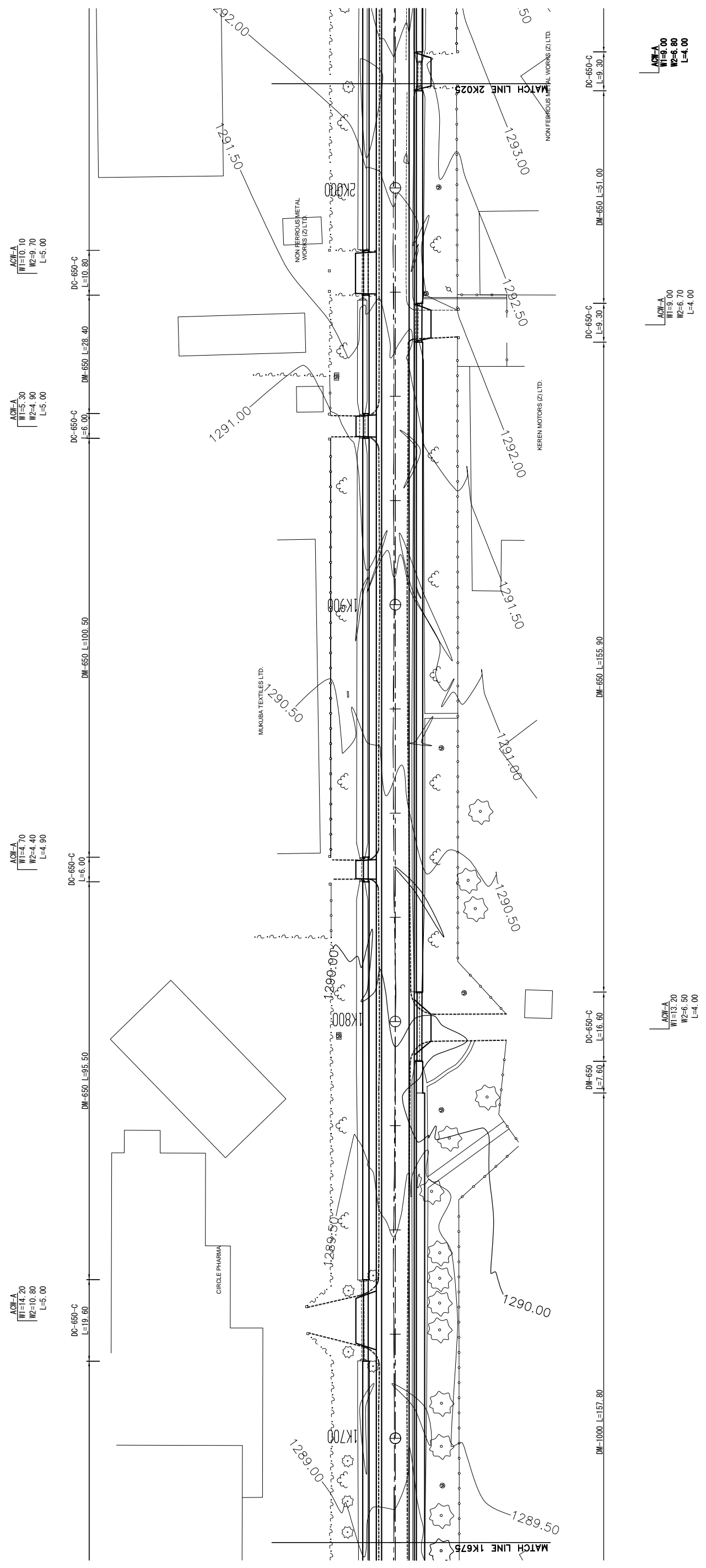
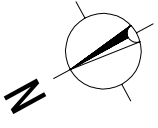
DC-650-C
L=13.50

DM-650 L=169.50

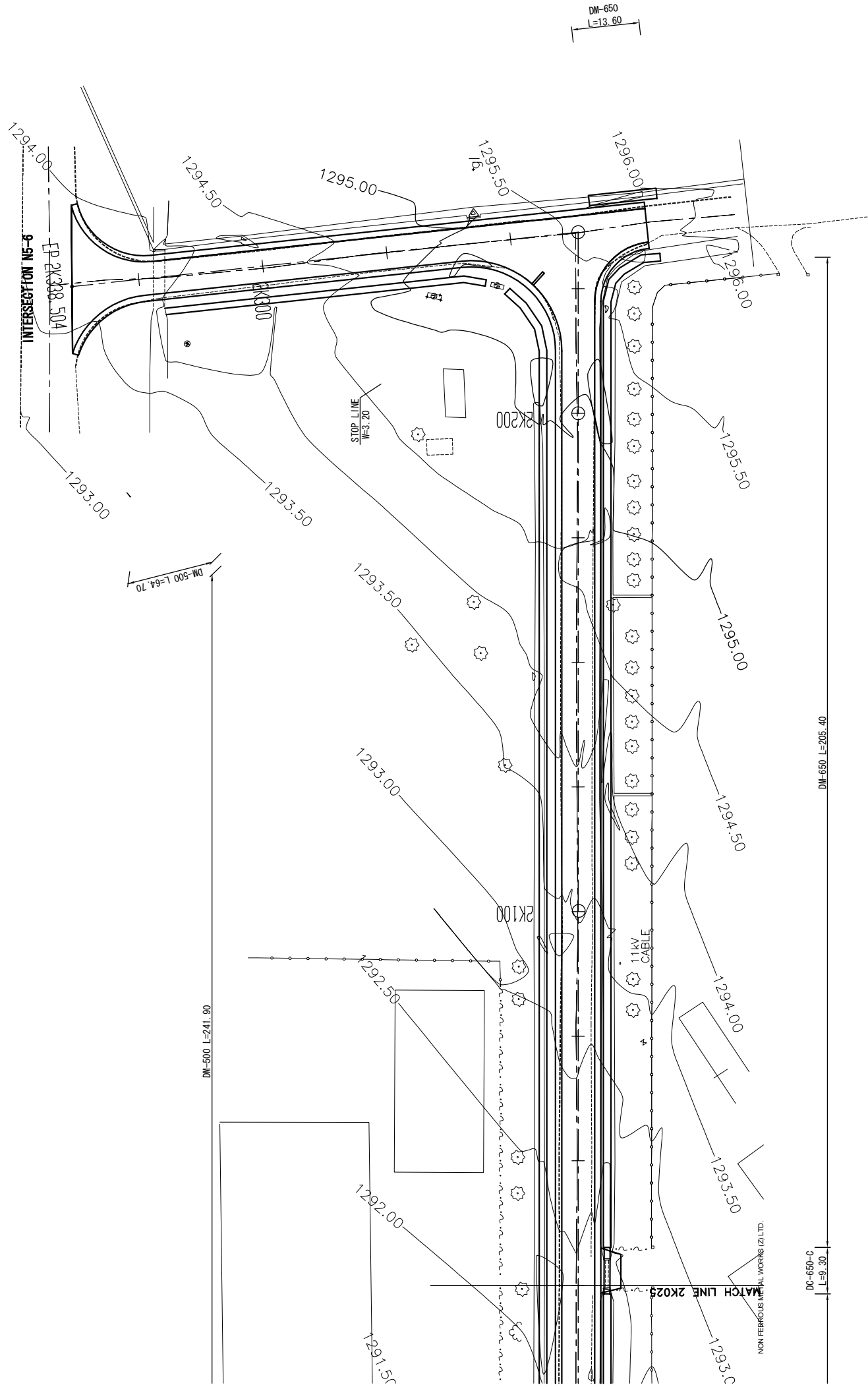
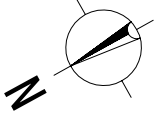
DM-650 L=337.50



MINISTRY OF LOCAL GOVERNMENT AND HOUSING THE REPUBLIC OF ZAMBIA	BASIC DESIGN FOR THE PROJECT FOR IMPROVEMENT AND MAINTENANCE OF NDOLA AND KITWE CITY ROADS IN THE REPUBLIC OF ZAMBIA	JAPAN INTERNATIONAL COOPERATION AGENCY (JICA)	PLAN	SCALE S=1:500	APPROVED DATE	KATAHIRA & ENGINEERS INTERNATIONAL JAPAN ENGINEERING CONSULTANTS	PREPARED CHECKED	DATE	SHEET NO PL-17
							SUBMITTED		



MINISTRY OF LOCAL GOVERNMENT AND HOUSING THE REPUBLIC OF ZAMBIA	JAPAN INTERNATIONAL COOPERATION AGENCY (JICA)	PLAN N5: ZAMBIA ROAD (6/7)	SCALE S=1:500	APPROVED DATE: _____	KATAHIRA & ENGINEERS INTERNATIONAL JAPAN ENGINEERING CONSULTANTS	PREPARED CHECKED SUBMITTED _____	DATE _____	SHEET NO PL-18
				BASIC DESIGN FOR THE PROJECT FOR IMPROVEMENT AND MAINTENANCE OF NDOLA AND KITWE CITY ROADS IN THE REPUBLIC OF ZAMBIA				



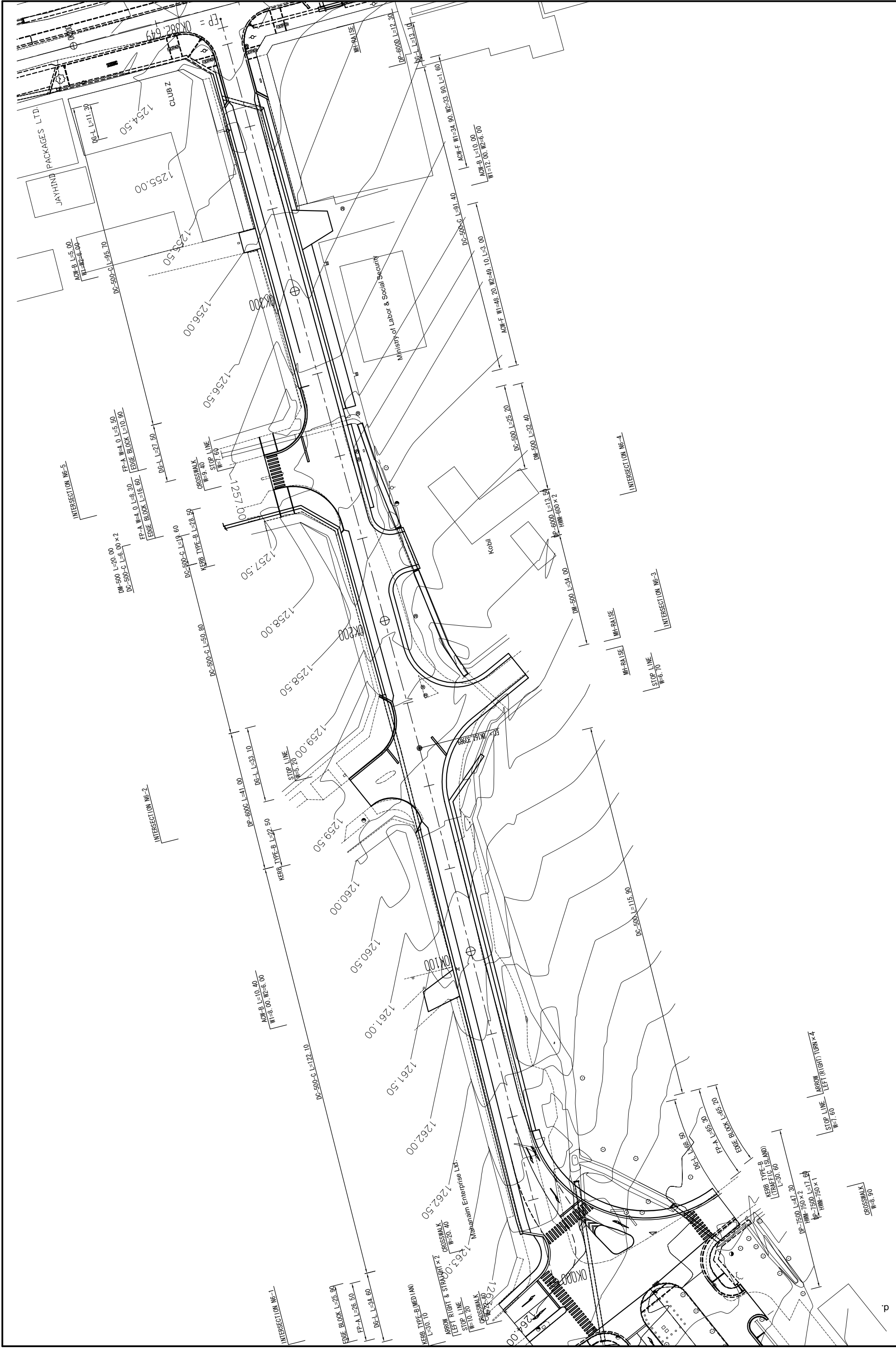
A=1
 W=8.00
 W=6.80
 L=4.00

DC-650-C
 L=9.30

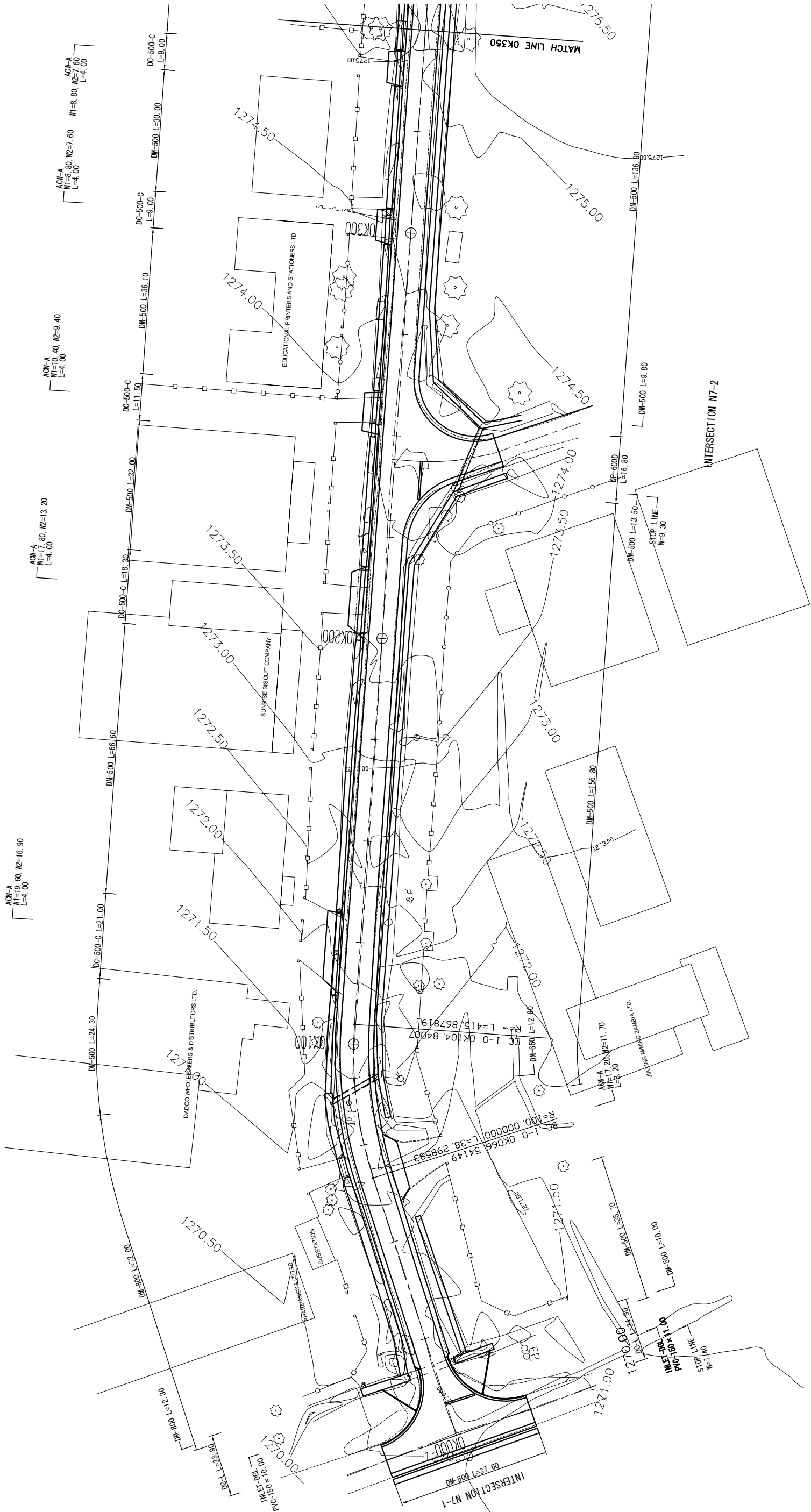
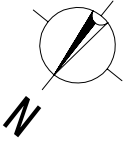
DM-650 L=205.40

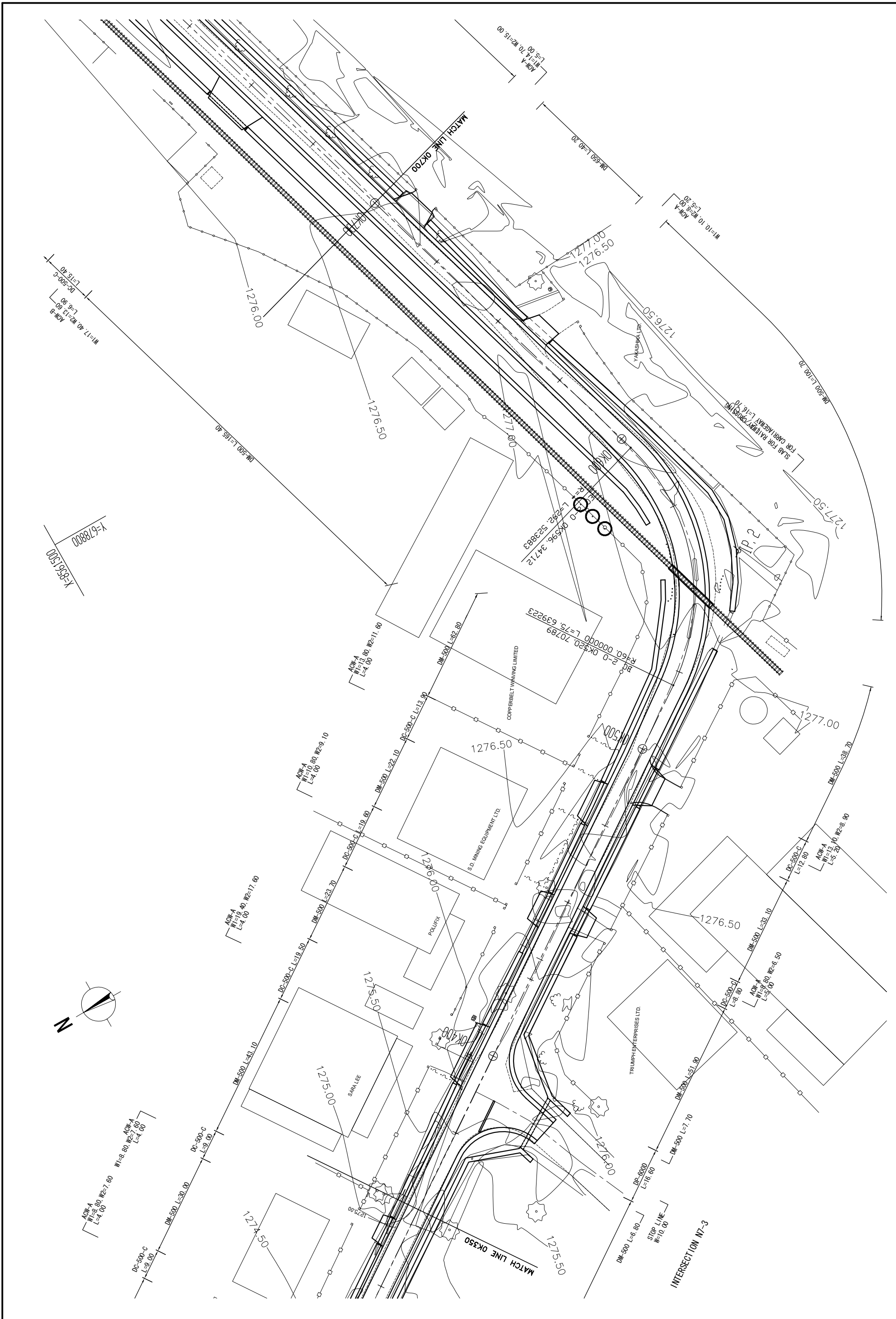
EXCEL TEXTILES MILLS

MINISTRY OF LOCAL GOVERNMENT AND HOUSING THE REPUBLIC OF ZAMBIA	BASIC DESIGN FOR THE PROJECT FOR IMPROVEMENT AND MAINTENANCE OF NDOLA AND KITWE CITY ROADS IN THE REPUBLIC OF ZAMBIA	JAPAN INTERNATIONAL COOPERATION AGENCY (JICA)	PLAN	SCALE S=1:500	APPROVED DATE	KATAHIRA & ENGINEERS INTERNATIONAL JAPAN ENGINEERING CONSULTANTS	PREPARED CHECKED	DATE	SHEET NO PL-19
							SUBMITTED		

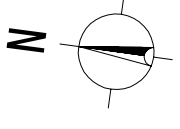


MINISTRY OF LOCAL GOVERNMENT AND HOUSING THE REPUBLIC OF ZAMBIA	BASIC DESIGN FOR THE PROJECT FOR IMPROVEMENT AND MAINTENANCE OF NDOLA AND KITWE CITY ROADS IN THE REPUBLIC OF ZAMBIA	JAPAN INTERNATIONAL COOPERATION AGENCY (JICA)	PLAN	SCALE S=1:500	APPROVED	KATAHIRA & ENGINEERS INTERNATIONAL JAPAN ENGINEERING CONSULTANTS	PREPARED CHECKED	DATE	SHEET NO PL-20
					DATE		SUBMITTED		





MINISTRY OF LOCAL GOVERNMENT AND HOUSING THE REPUBLIC OF ZAMBIA	BASIC DESIGN FOR THE PROJECT FOR IMPROVEMENT AND MAINTENANCE OF NDOLA AND KITWE CITY ROADS IN THE REPUBLIC OF ZAMBIA	JAPAN INTERNATIONAL COOPERATION AGENCY (JICA)	PLAN	SCALE S=1:500	APPROVED	KATAHIRA & ENGINEERS INTERNATIONAL JAPAN ENGINEERING CONSULTANTS	PREPARED CHECKED	DATE	SHEET NO PL-22
					DATE		SUBMITTED		



ACK-B
WI=18.00, W2=9.30
L=6.50
DM-500 L=9.50

ACK-F
WI=15.70, W2=13.90
L=7.40
DC-500-C L=15.40
DM-500 L=43.80

ACK-B
WI=17.40, W2=13.60
L=6.90
DC-500-C L=15.40

ACK-A
WI=25.90, W2=21.90
L=5.00
DC-650-C L=28.70

ACK-A
WI=14.70, W2=15.00
L=5.00

DM-500 L=25.00

MH-RAISE

PPERINVESTMENT LTD.

ZAMROCK AFRICA LTD.

END OF N7 ROAD
START OF N7 ROAD

BC 3-0 OK888, 87100
R=100.00000 L=90.993112

GOVERNMENT STORES DEPARTMENT

DM-650 L=270.80

277.00

1276.50

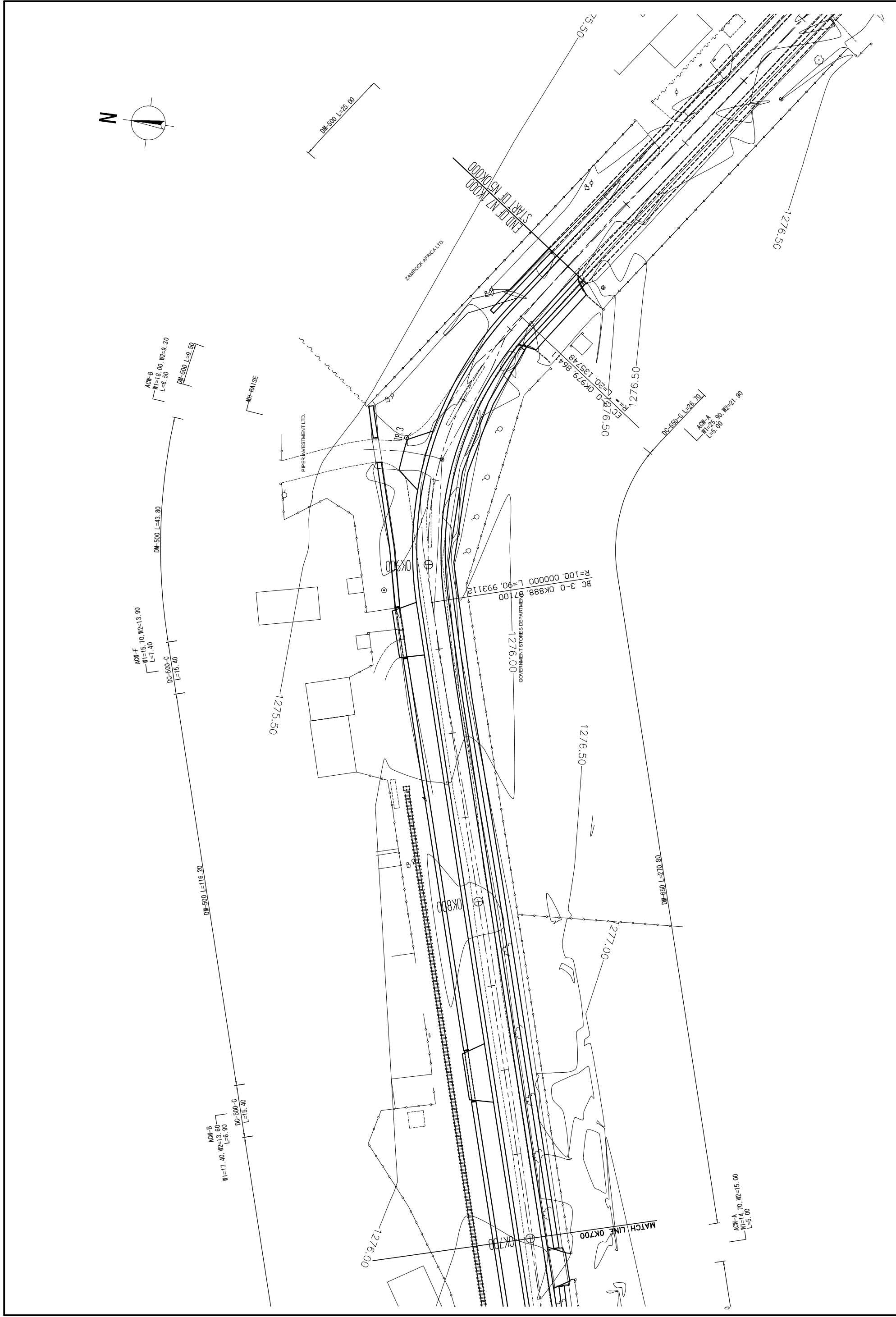
1276.50

1276.50

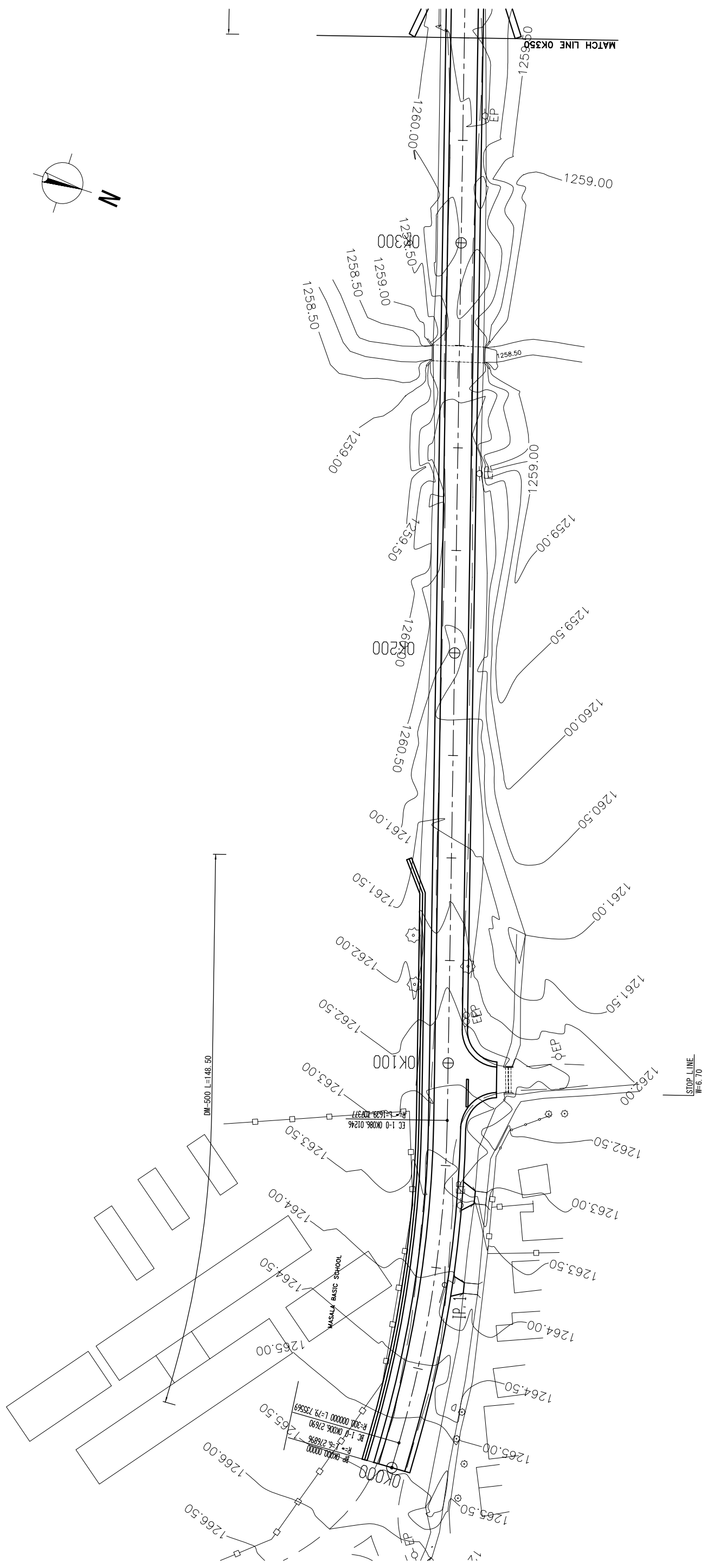
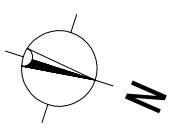
1276.00

OK700

MATCH LINE OK700



MINISTRY OF LOCAL GOVERNMENT AND HOUSING THE REPUBLIC OF ZAMBIA	BASIC DESIGN FOR THE PROJECT FOR IMPROVEMENT AND MAINTENANCE OF NDOLA AND KITWE CITY ROADS IN THE REPUBLIC OF ZAMBIA	JAPAN INTERNATIONAL COOPERATION AGENCY (JICA)	PLAN	SCALE S=1:500	APPROVED DATE	KATAHIRA & ENGINEERS INTERNATIONAL JAPAN ENGINEERING CONSULTANTS	PREPARED	SHEET NO
							CHECKED	DATE
							SUBMITTED	PL-23

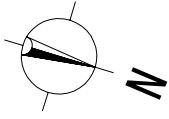


ACW-E
 W1=5.00
 W2=2.60
 L=2.90

STOP LINE
 W=6.70

ACW-E
 W1=7.00
 W2=3.10
 L=3.00

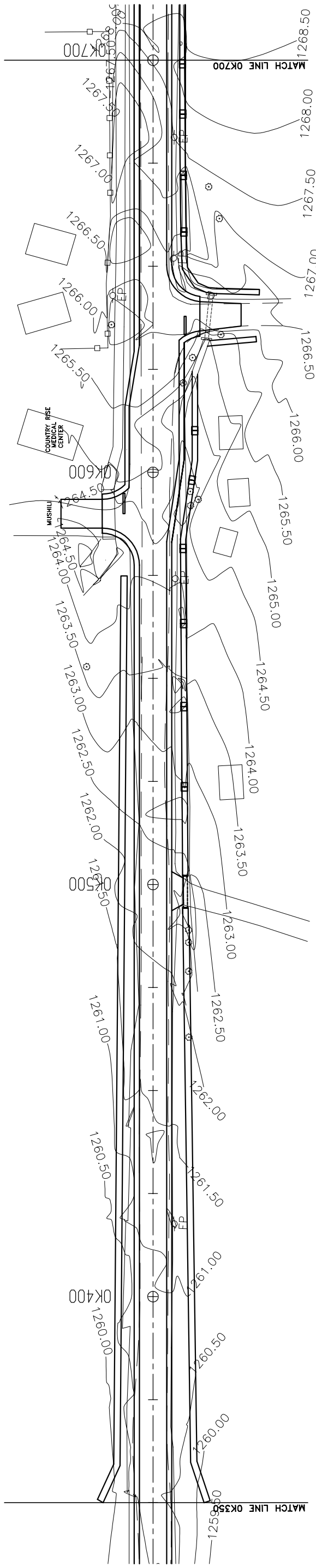
MINISTRY OF LOCAL GOVERNMENT AND HOUSING THE REPUBLIC OF ZAMBIA	BASIC DESIGN FOR THE PROJECT FOR IMPROVEMENT AND MAINTENANCE OF NDDLA AND KITWE CITY ROADS IN THE REPUBLIC OF ZAMBIA	JAPAN INTERNATIONAL COOPERATION AGENCY (JICA)	PLAN	SCALE S=1:500	APPROVED	KATAHIRA & ENGINEERS INTERNATIONAL JAPAN ENGINEERING CONSULTANTS	PREPARED CHECKED	DATE	SHEET NO PL-24
					DATE		SUBMITTED		



ACW-A
W1= 7.00
W2= 7.00
L=10.00

STOP LINE
W=4.50

DM-650 L=225.40



STOP LINE
W=4.50

ACW-A
W1= 7.10
W2= 5.50
L=10.00

DM-500
L=4.30

DP-6000
L=7.60

HWM-600 x 2

ACW-E
W1= 9.50
W2= 6.30
L=2.80

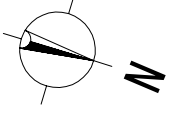
DM-650 L140.40

DM-500 L=122.50

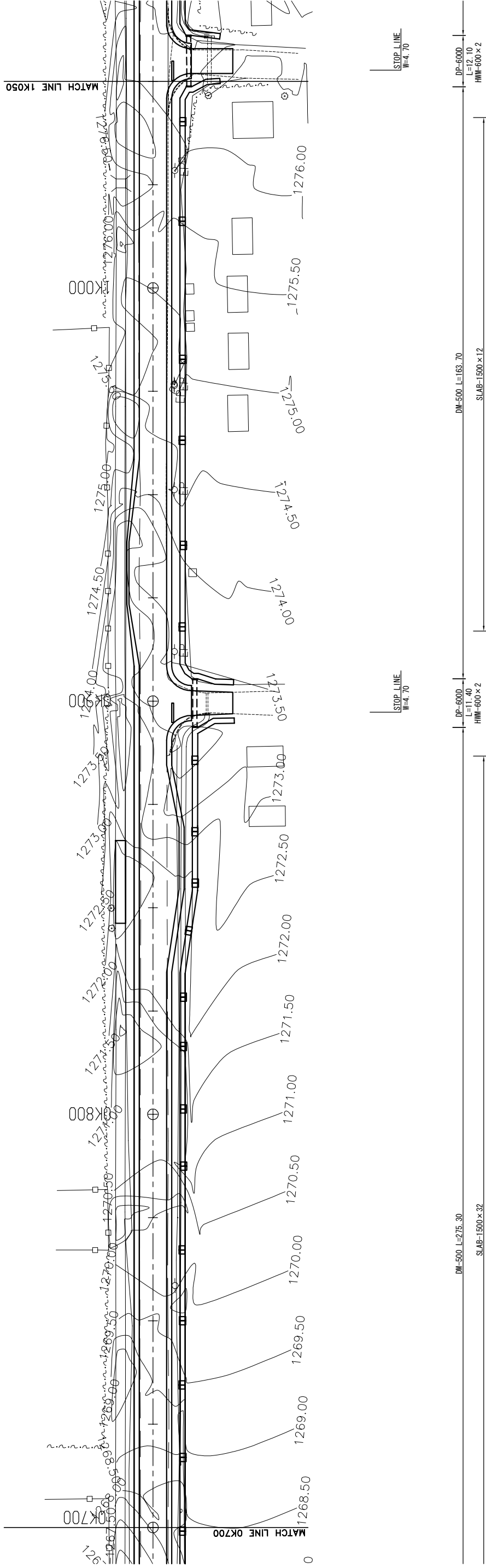
SI AB=1500 x 12

DM-500
L=11.90

MINISTRY OF LOCAL GOVERNMENT AND HOUSING THE REPUBLIC OF ZAMBIA	BASIC DESIGN FOR THE PROJECT FOR IMPROVEMENT AND MAINTENANCE OF NDDOLA AND KITWE CITY ROADS IN THE REPUBLIC OF ZAMBIA	JAPAN INTERNATIONAL COOPERATION AGENCY (JICA)	PLAN	SCALE S=1:500	APPROVED DATE	KATAHIRA & ENGINEERS INTERNATIONAL JAPAN ENGINEERING CONSULTANTS	PREPARED CHECKED	DATE	SHEET NO
							SUBMITTED		PL-25



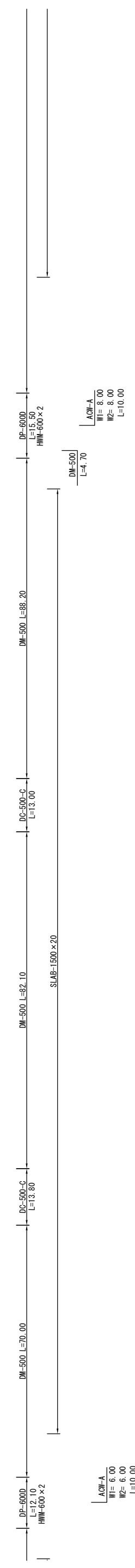
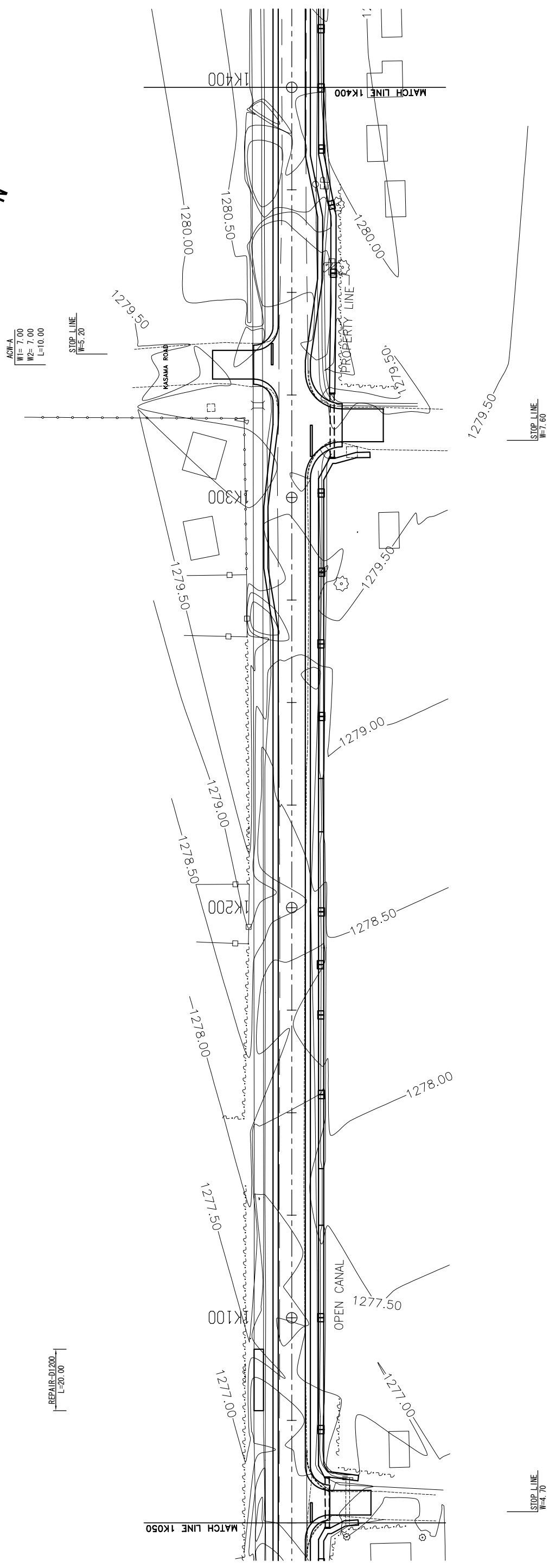
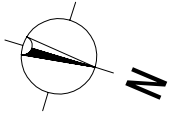
REPAIR-D1200
L=20.00



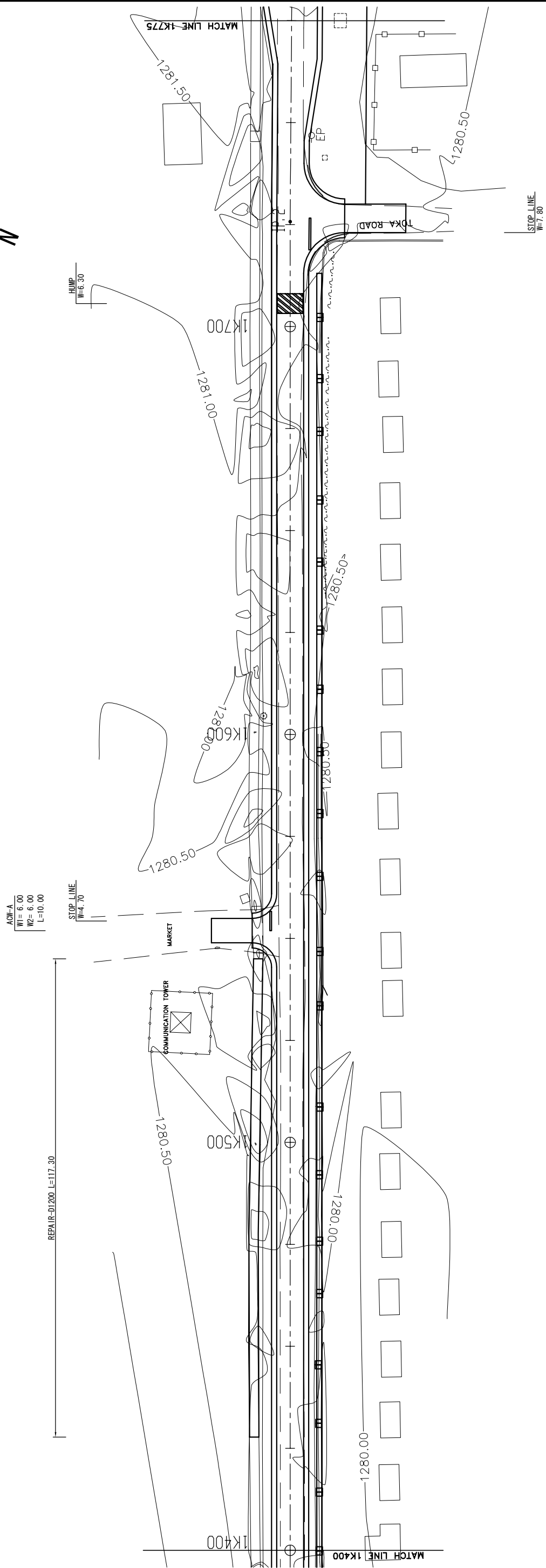
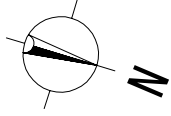
ADW-A
W1= 6.00
W2= 5.20
L=10.00

ADW-A
W1= 6.00
W2= 6.00
L=10.00

MINISTRY OF LOCAL GOVERNMENT AND HOUSING THE REPUBLIC OF ZAMBIA	BASIC DESIGN FOR THE PROJECT FOR IMPROVEMENT AND MAINTENANCE OF NDDOLA AND KITWE CITY ROADS IN THE REPUBLIC OF ZAMBIA	JAPAN INTERNATIONAL COOPERATION AGENCY (JICA)	PLAN	SCALE	APPROVED DATE	KATAHIRA & ENGINEERS INTERNATIONAL JAPAN ENGINEERING CONSULTANTS	PREPARED CHECKED	DATE	SHEET NO
				N8: CHAMBESHI ROAD (3/13)			S=1:500	SUBMITTED	PL-26



MINISTRY OF LOCAL GOVERNMENT AND HOUSING THE REPUBLIC OF ZAMBIA	BASIC DESIGN FOR THE PROJECT FOR IMPROVEMENT AND MAINTENANCE OF NDDOLA AND KITWE CITY ROADS IN THE REPUBLIC OF ZAMBIA	JAPAN INTERNATIONAL COOPERATION AGENCY (JICA)	PLAN	SCALE	APPROVED	KATAHIRA & ENGINEERS INTERNATIONAL JAPAN ENGINEERING CONSULTANTS	PREPARED CHECKED	DATE	SHEET NO
				N8: CHAMBESHI ROAD (4/13)			S=1:500	DATE	SUBMITTED



ACW-A
W1= 6.00
W2= 6.00
L=10.00

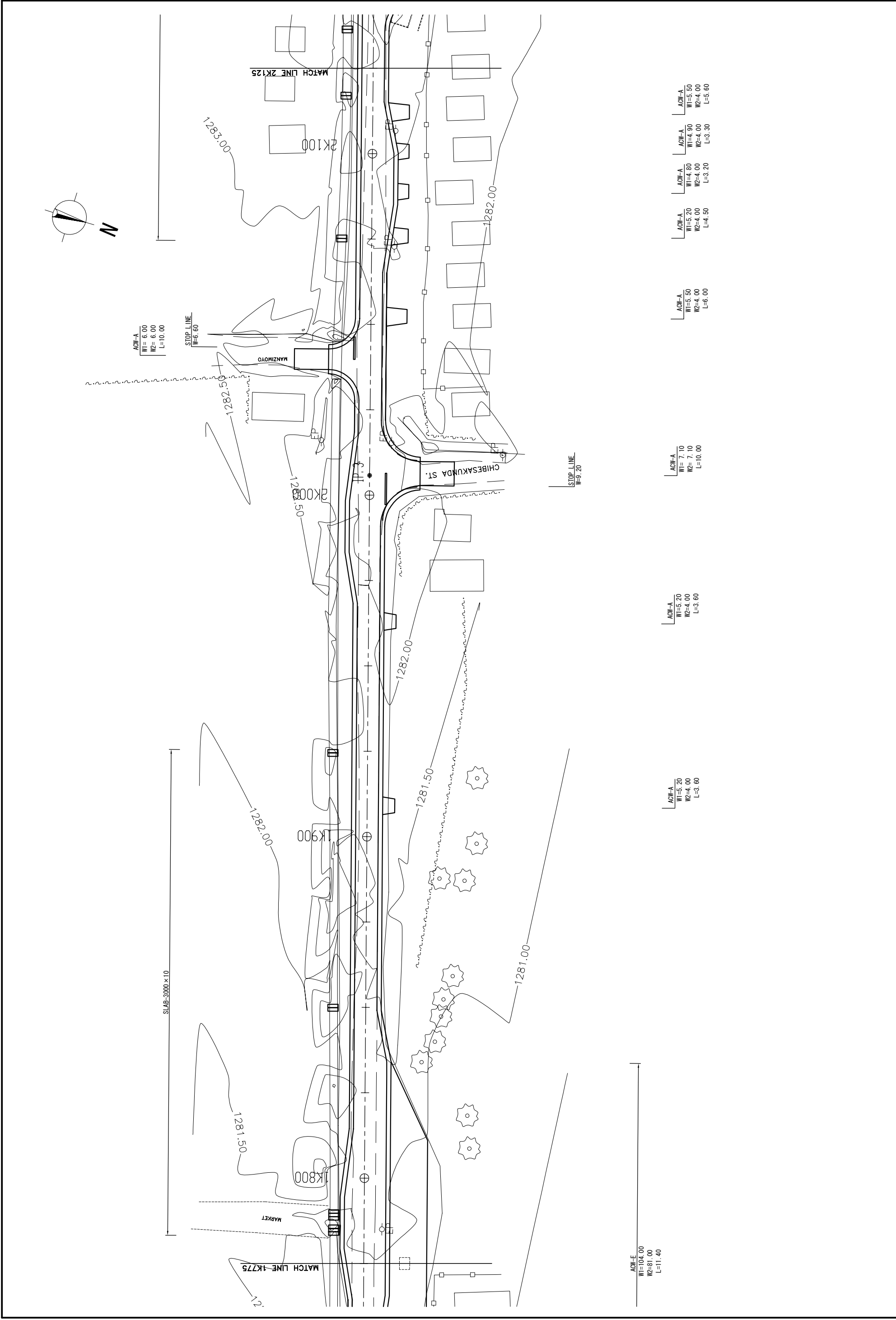
STOP LINE
W=4.70

DM-500 L=387.90
SLAB=1500x46

ACW-A
W1= 7.00
W2= 7.00
L=15.00

ACW-E
W1=104.0
W2=81.00
L=11.40

MINISTRY OF LOCAL GOVERNMENT AND HOUSING THE REPUBLIC OF ZAMBIA	BASIC DESIGN FOR THE PROJECT FOR IMPROVEMENT AND MAINTENANCE OF NDDOLA AND KITWE CITY ROADS IN THE REPUBLIC OF ZAMBIA	JAPAN INTERNATIONAL COOPERATION AGENCY (JICA)	PLAN	SCALE S=1:500	APPROVED DATE	KATAHIRA & ENGINEERS INTERNATIONAL JAPAN ENGINEERING CONSULTANTS	PREPARED CHECKED	DATE	SHEET NO
							SUBMITTED		PL-28



ACW-A
W1= 6.00
W2= 6.00
L=10.00

STOP LINE
W=6.60

STOP LINE
W=9.20

ACW-E
W1=104.00
W2=81.00
L=11.40

ACW-A
W1=5.20
W2=4.00
L=3.60

ACW-A
W1=5.20
W2=4.00
L=3.60

ACW-A
W1= 7.10
W2= 7.10
L=10.00

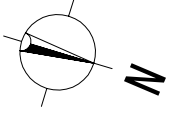
ACW-A
W1=5.50
W2=4.00
L=6.00

ACW-A
W1=5.20
W2=4.00
L=4.50

ACW-A
W1=4.80
W2=4.00
L=3.20

ACW-A
W1=5.50
W2=4.00
L=5.50

MINISTRY OF LOCAL GOVERNMENT AND HOUSING THE REPUBLIC OF ZAMBIA	BASIC DESIGN FOR THE PROJECT FOR IMPROVEMENT AND MAINTENANCE OF NDOLA AND KITWE CITY ROADS IN THE REPUBLIC OF ZAMBIA	JAPAN INTERNATIONAL COOPERATION AGENCY (JICA)	PLAN	SCALE S=1:500	APPROVED DATE	KATAHIRA & ENGINEERS INTERNATIONAL JAPAN ENGINEERING CONSULTANTS	PREPARED	DATE	SHEET NO
							CHECKED	DATE	PL-29
			N8: CHAMBESHI ROAD (6/13)						

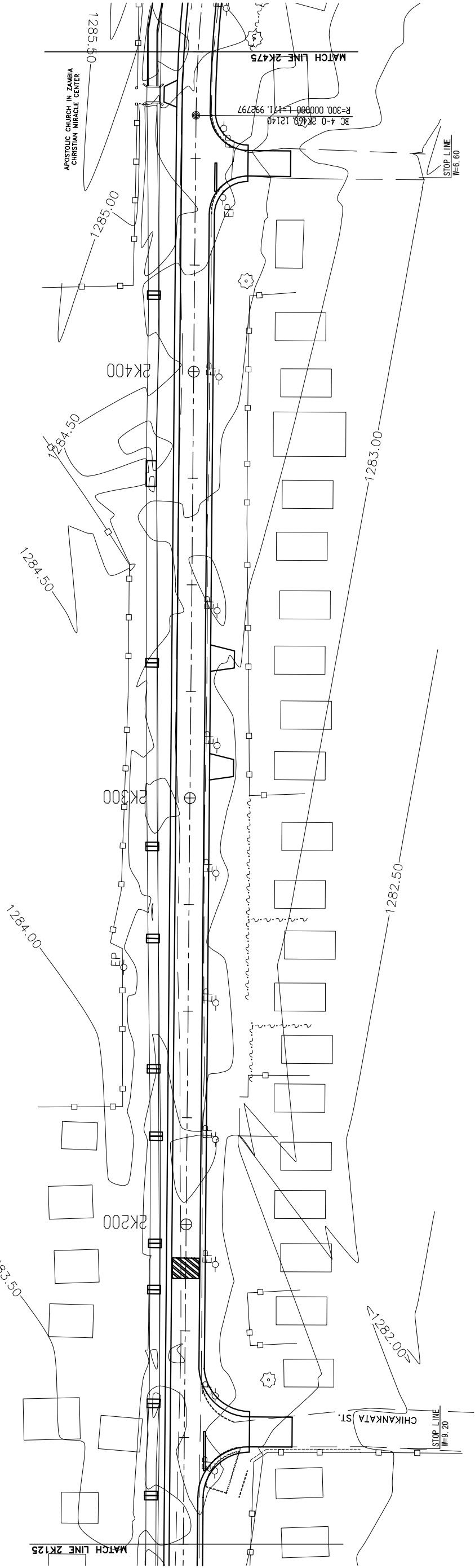


ACW-A
 W1=6.30
 W2=3.70
 L=3.00

SLAB-3000x24

REPAIR-D1200
 L=6.00

HUMP
 W=6.30



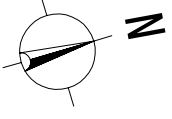
ACW-A
 W1=7.00
 W2=7.00
 L=10.00

ACW-A
 W1=6.20
 W2=4.00
 L=5.60

ACW-A
 W1=6.20
 W2=4.00
 L=5.60

ACW-A
 W1=6.00
 W2=6.00
 L=10.00

MINISTRY OF LOCAL GOVERNMENT AND HOUSING THE REPUBLIC OF ZAMBIA	BASIC DESIGN FOR THE PROJECT FOR IMPROVEMENT AND MAINTENANCE OF NDDOLA AND KITWE CITY ROADS IN THE REPUBLIC OF ZAMBIA	JAPAN INTERNATIONAL COOPERATION AGENCY (JICA)	PLAN	SCALE	APPROVED DATE	KATAHIRA & ENGINEERS INTERNATIONAL JAPAN ENGINEERING CONSULTANTS	PREPARED CHECKED	DATE	SHEET NO
				N8: CHAMBESHI ROAD (7/13)			S=1:500	SUBMITTED	



ACW-E
W1=4.00
W2=3.40
L=4.50

ACW-E
W1=4.00
W2=3.40
L=4.70

DM-1200-L L=152

DC-1200-C
L=4.00

DM-1200-L L=118.60

SL AB-3000x.50

DC-1200-C
L=4.00

DM-1200-L L=80.10

DM-1200-L L=10.80

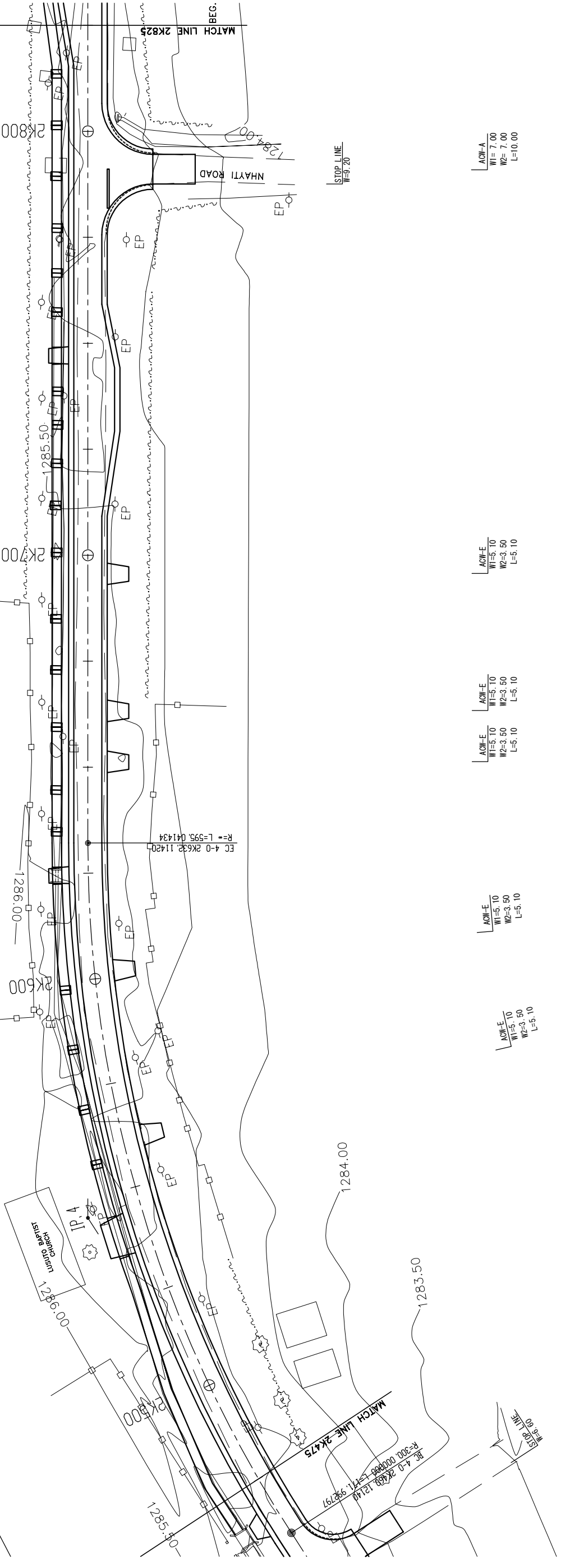
DM-1200-L L=10.80

ACW-A
W1=5.80
W2=3.30
L=5.10

DC-1200-C
L=3.00

DM-1200-L L=10.80

ACW-A
W1=5.80
W2=3.30
L=5.10



ACW-E
W1=5.10
W2=3.50
L=5.10

ACW-E
W1=5.10
W2=3.50
L=5.10

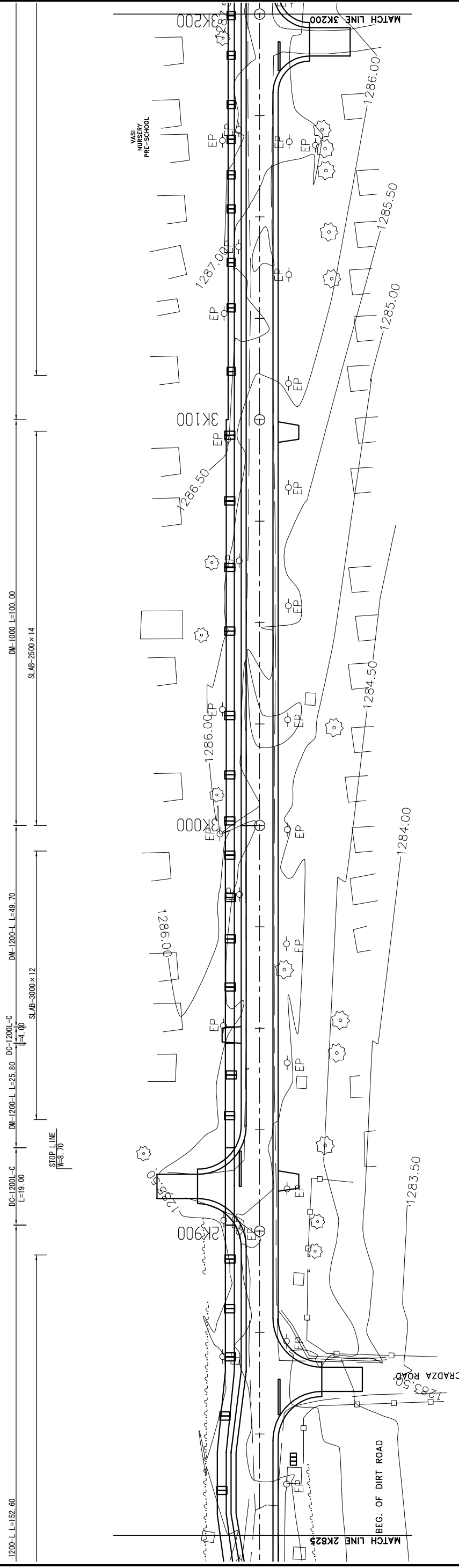
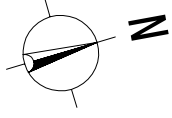
ACW-E
W1=5.10
W2=3.50
L=5.10

ACW-E
W1=5.10
W2=3.50
L=5.10

ACW-A
W1=7.00
W2=7.00
L=10.00

ACW-A
W1=5.80
W2=3.30
L=5.10

MINISTRY OF LOCAL GOVERNMENT AND HOUSING THE REPUBLIC OF ZAMBIA	BASIC DESIGN FOR THE PROJECT FOR IMPROVEMENT AND MAINTENANCE OF NDDOLA AND KITWE CITY ROADS IN THE REPUBLIC OF ZAMBIA	JAPAN INTERNATIONAL COOPERATION AGENCY (JICA)	PLAN	SCALE	APPROVED	KATAHIRA & ENGINEERS INTERNATIONAL JAPAN ENGINEERING CONSULTANTS	PREPARED	DATE	SHEET NO
				N8: CHAMBESHI ROAD (8/13)			DATE	SUBMITTED	



ACW-E
W1= 4.10
W2= 3.50
L= 2.40

ACW-A
W1= 6.00
W2= 6.00
L= 10.00

-1200-L L=152.60
DC-1200L-C L=19.00
DM-1200-L L=25.80
DM-1200-L L=49.70
DM-1000 L=100.00

SLAB-3000 x 12
SLAB-2500 x 14

STOP LINE W=8.70

STOP LINE W=8.70

STOP LINE W=7.10

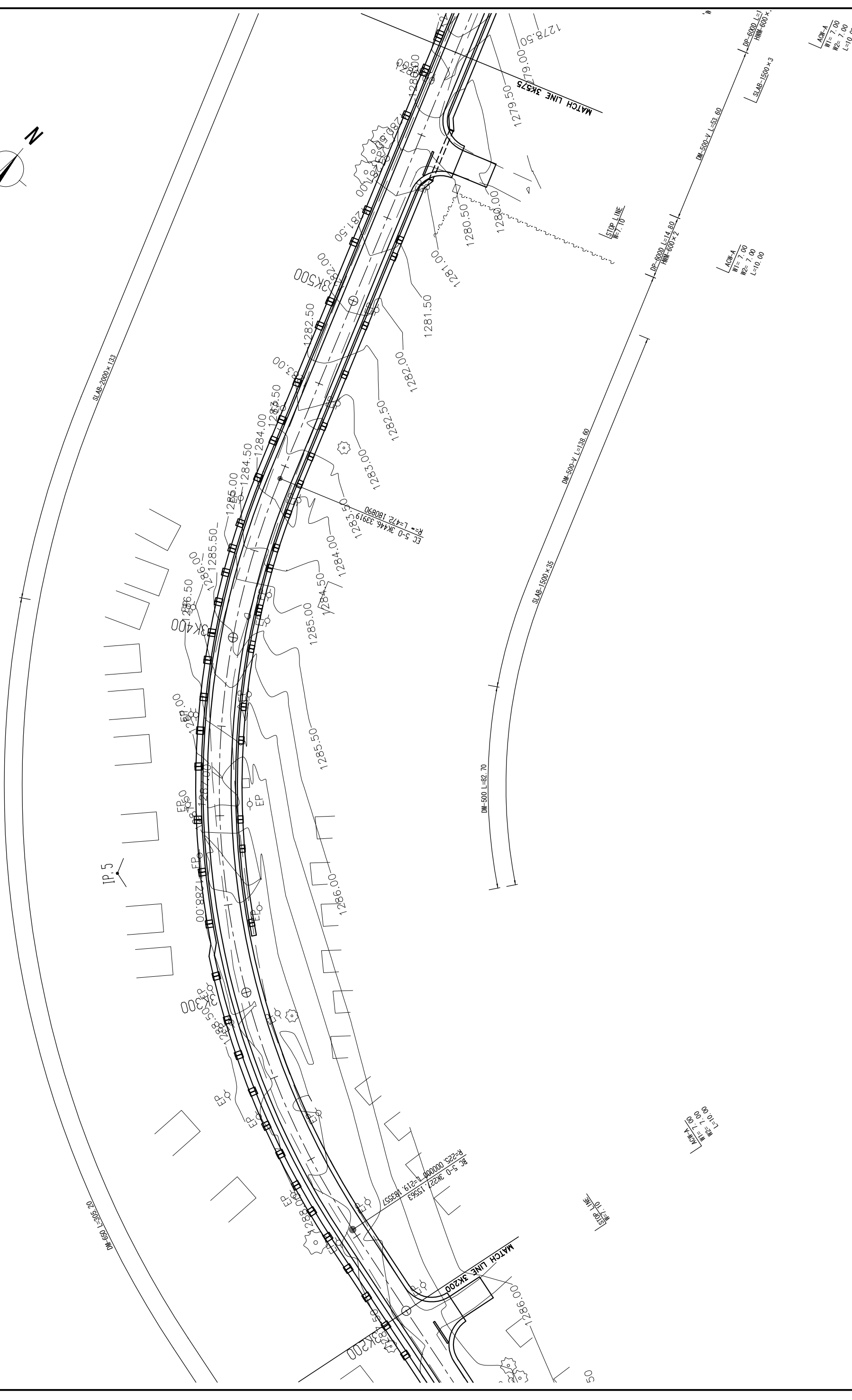
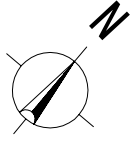
ACW-A
W1= 6.00
W2= 6.00
L= 10.00

ACW-E
W1= 5.10
W2= 3.50
L= 5.10

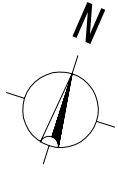
ACW-E
W1= 5.10
W2= 3.50
L= 5.10

ACW-A
W1= 7.00
W2= 7.00
L= 10.00

MINISTRY OF LOCAL GOVERNMENT AND HOUSING THE REPUBLIC OF ZAMBIA	BASIC DESIGN FOR THE PROJECT FOR IMPROVEMENT AND MAINTENANCE OF NDDOLA AND KITWE CITY ROADS IN THE REPUBLIC OF ZAMBIA	JAPAN INTERNATIONAL COOPERATION AGENCY (JICA)	PLAN	SCALE	APPROVED	KATAHIRA & ENGINEERS INTERNATIONAL JAPAN ENGINEERING CONSULTANTS	PREPARED CHECKED	DATE	SHEET NO
				N8: CHAMBESHI ROAD (9/13)			DATE	SUBMITTED	PL-32



MINISTRY OF LOCAL GOVERNMENT AND HOUSING THE REPUBLIC OF ZAMBIA	BASIC DESIGN FOR THE PROJECT FOR IMPROVEMENT AND MAINTENANCE OF NDOLA AND KITWE CITY ROADS IN THE REPUBLIC OF ZAMBIA	JAPAN INTERNATIONAL COOPERATION AGENCY (JICA)	PLAN	SCALE	APPROVED	KATAHIRA & ENGINEERS INTERNATIONAL JAPAN ENGINEERING CONSULTANTS	PREPARED CHECKED	DATE	SHEET NO
				S=1:500			DATE	SUBMITTED	PL-33



ACW-A
W1= 7.00
W2= 7.00
L=10.00

DM-500
L=17.60

DC-650-C
L=20.60

DM-650-Y L=71.10

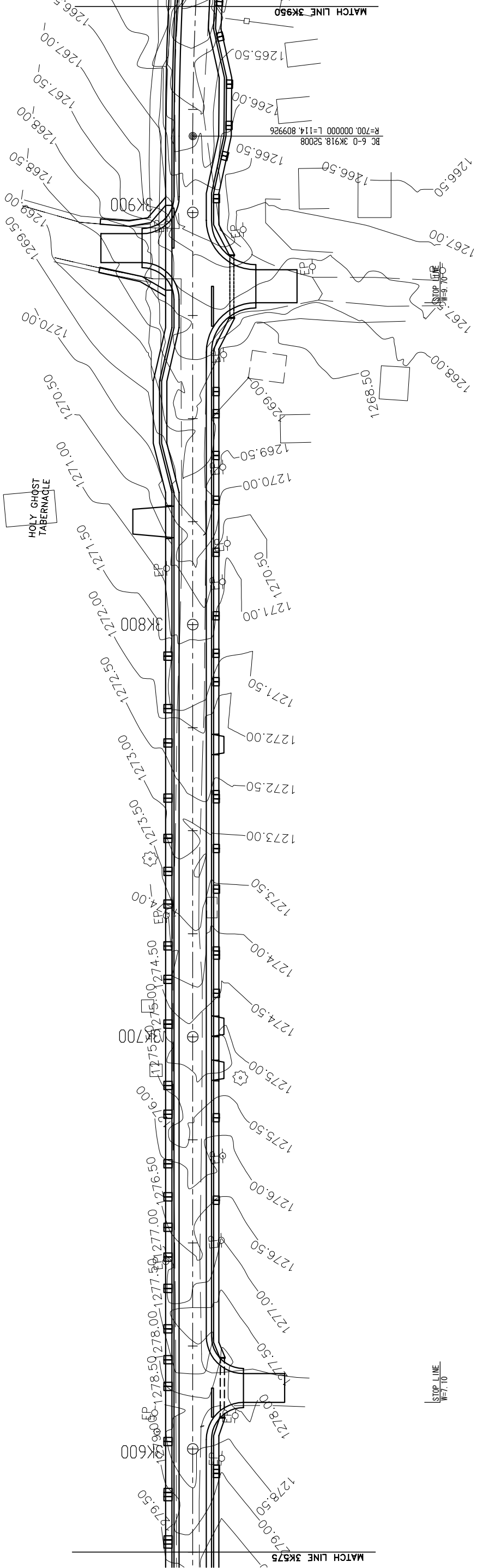
ACW-E
W1= 7.70
W2= 6.00
L=10.00

DC-650-C
L=8.00

DM-650-Y L=422.10

STOP LINE
W=9.70

HOLY GHOST
TABERNACLE



DM-500-Y L=53.60

DP-600 L=14.30
HWM-600 x 2

DM-500-Y L=67.50

DC-500-C
L=5.00 DM-500-Y L=5.00
HWM-600 x 2 L=5.70 HWM-600 x 2

DM-500-Y L=63.40

DP-500 L=5.00

DM-500-Y L=101.80

DP-600 L=15.00
HWM-600 x 2

DM-500-Y L=

ACW-A
W1= 7.00
W2= 7.00
L=10.00

ACW-E
W1=5.00
W2=4.00
L=3.00

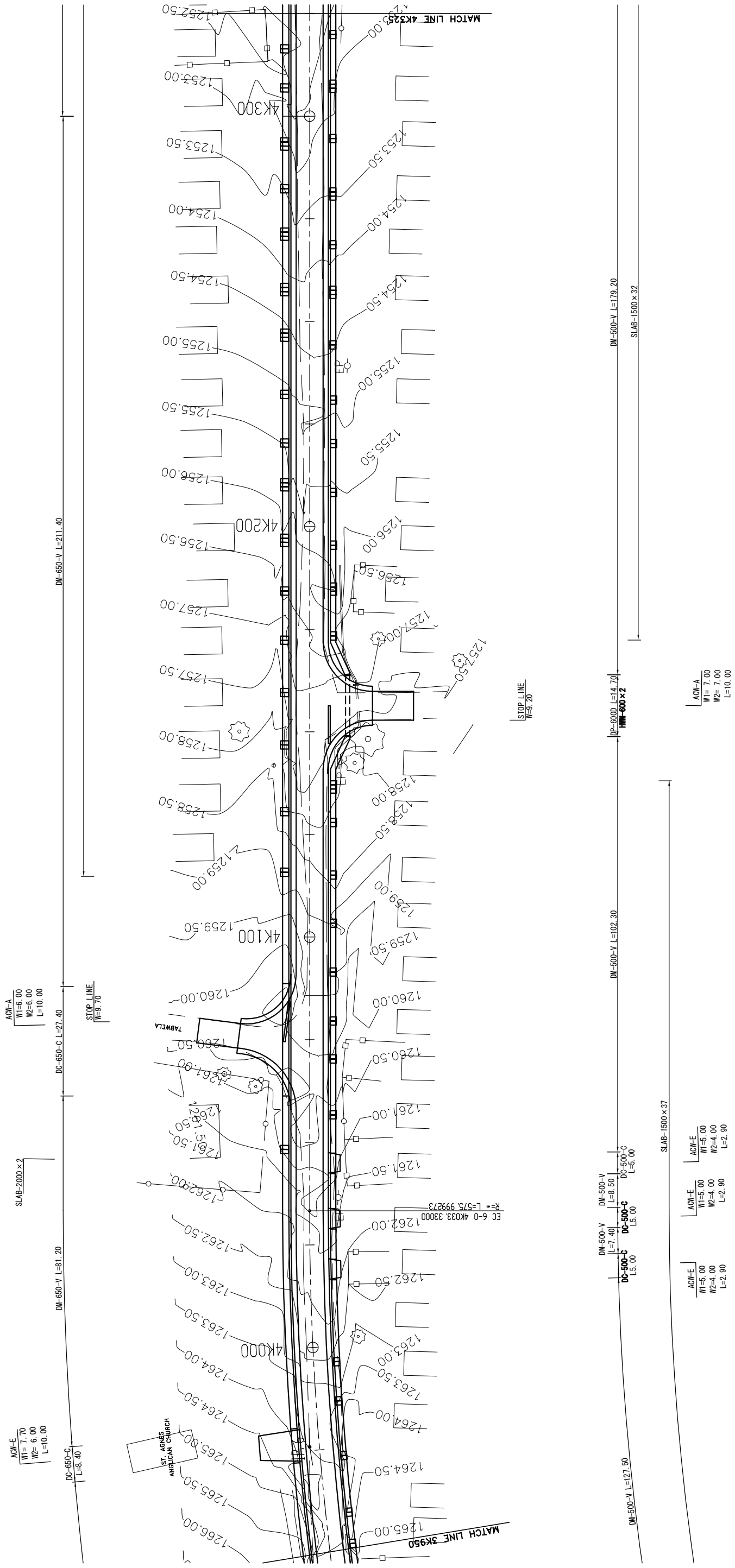
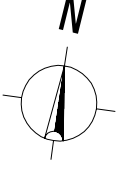
ACW-E
W1=5.00
W2=4.00
L=3.00

ACW-A
W1= 8.00
W2= 8.00
L=10.00

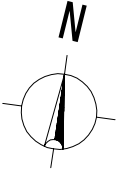
SLAB-1500 x 3

SLAB-1500 x 32

MINISTRY OF LOCAL GOVERNMENT AND HOUSING THE REPUBLIC OF ZAMBIA	BASIC DESIGN FOR THE PROJECT FOR IMPROVEMENT AND MAINTENANCE OF NDDOLA AND KITWE CITY ROADS IN THE REPUBLIC OF ZAMBIA	JAPAN INTERNATIONAL COOPERATION AGENCY (JICA)	PLAN	SCALE	APPROVED	KATAHIRA & ENGINEERS INTERNATIONAL JAPAN ENGINEERING CONSULTANTS	PREPARED CHECKED	DATE	SHEET NO
				S=1:500			DATE	SUBMITTED	PL-34

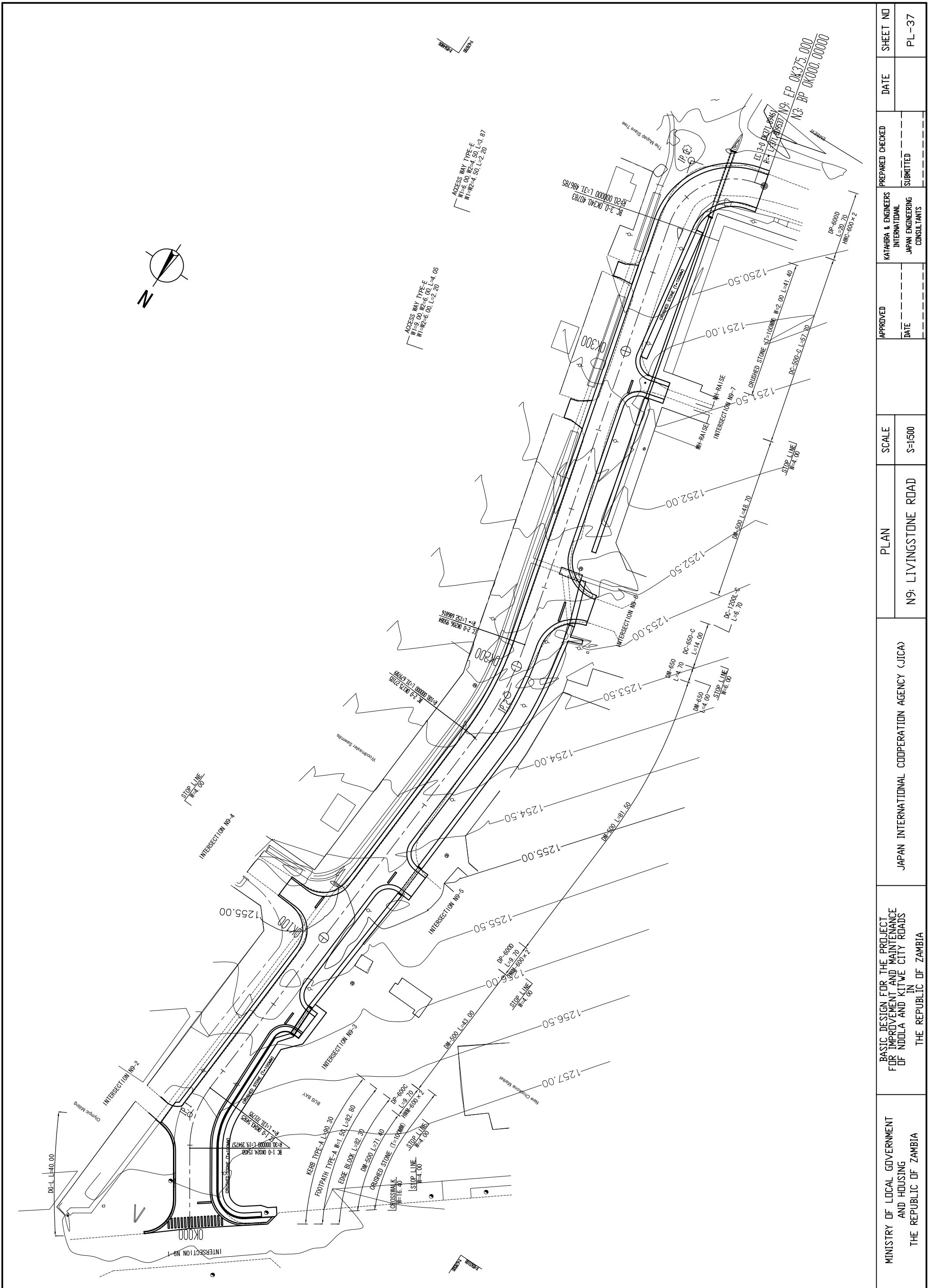


MINISTRY OF LOCAL GOVERNMENT AND HOUSING THE REPUBLIC OF ZAMBIA	BASIC DESIGN FOR THE PROJECT FOR IMPROVEMENT AND MAINTENANCE OF NDOLA AND KITWE CITY ROADS IN THE REPUBLIC OF ZAMBIA	JAPAN INTERNATIONAL COOPERATION AGENCY (JICA)	PLAN	SCALE	APPROVED	KATAHIRA & ENGINEERS INTERNATIONAL JAPAN ENGINEERING CONSULTANTS	PREPARED CHECKED	SHEET NO
				S=1:500			DATE	

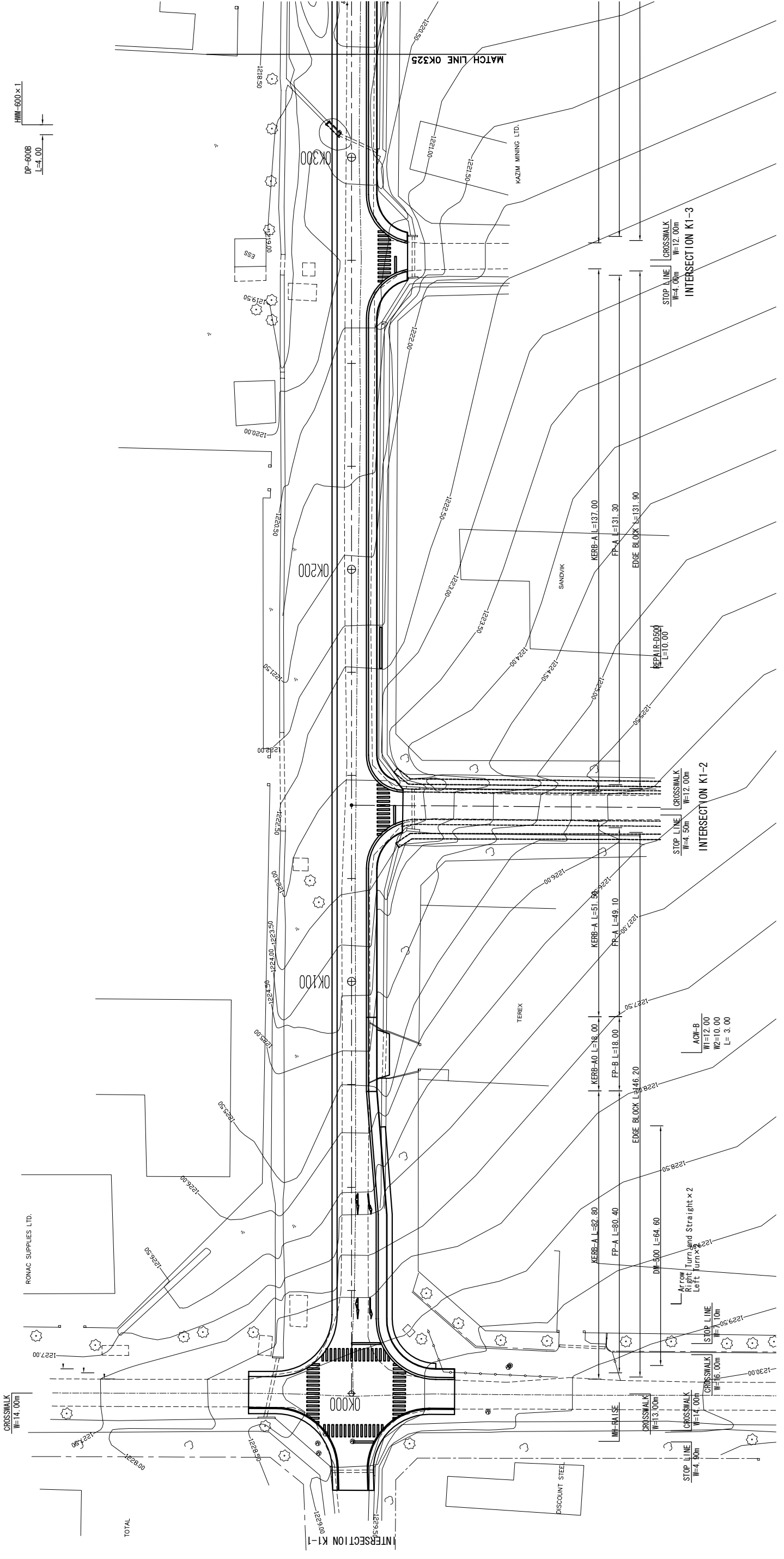
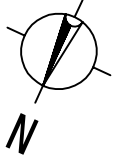


ACW-A
W1= 7.00
W2= 7.00
L=10.00

MINISTRY OF LOCAL GOVERNMENT AND HOUSING THE REPUBLIC OF ZAMBIA	BASIC DESIGN FOR THE PROJECT FOR IMPROVEMENT AND MAINTENANCE OF NDDOLA AND KITWE CITY ROADS IN THE REPUBLIC OF ZAMBIA	JAPAN INTERNATIONAL COOPERATION AGENCY (JICA)	PLAN	SCALE S=1:500	APPROVED DATE	KATAHIRA & ENGINEERS INTERNATIONAL JAPAN ENGINEERING CONSULTANTS	PREPARED CHECKED	DATE	SHEET NO
							SUBMITTED		PL-36



MINISTRY OF LOCAL GOVERNMENT AND HOUSING THE REPUBLIC OF ZAMBIA	BASIC DESIGN FOR THE PROJECT FOR IMPROVEMENT AND MAINTENANCE OF NDOLA AND KITWE CITY ROADS IN THE REPUBLIC OF ZAMBIA	JAPAN INTERNATIONAL COOPERATION AGENCY (JICA)	PLAN	SCALE	APPROVED	KATAHIRA & ENGINEERS INTERNATIONAL JAPAN ENGINEERING CONSULTANTS	PREPARED CHECKED	DATE	SHEET NO
				S=1:500			DATE	SUBMITTED	PL-37



CROSSWALK
W=14.00m

ROMAC SUPPLIES LTD.

DISCOUNT STEEL

KAZIM MINING LTD.

SANDVIK

TEREX

ES

DP-6008
1:4,000

HMM-600 x 1
1:600

MINISTRY OF LOCAL GOVERNMENT AND HOUSING THE REPUBLIC OF ZAMBIA	BASIC DESIGN FOR THE PROJECT FOR IMPROVEMENT AND MAINTENANCE OF NDOLA AND KITWE CITY ROADS IN THE REPUBLIC OF ZAMBIA	JAPAN INTERNATIONAL COOPERATION AGENCY (JICA)	PLAN	SCALE	APPROVED	KATAHIRA & ENGINEERS INTERNATIONAL JAPAN ENGINEERING CONSULTANTS	PREPARED	DATE	SHEET NO
							CHECKED		
			K1: DR. AGGREY AVENUE(1/3)	S=1:500	DATE				PL-38