

相手国関係者リスト

相手国関係者面談者

(1) Bhutan Broadcasting Service (BBS)ブータン国営放送局

Mr. Mingbo Dukpa	Managing Director
Mr. Sonam Tobgyar	Chief Engineer
Mr. Rajesy Kafley	Dy. Executive Engineer (送信機材担当)
Mr. Dorji Wangchuk	Transmission Engineer
Ms. Sangay Ghoden	Planning Officer
Mr. Panchaman Rai	Head Studio Operation (放送機材担当)
Mr. Thnkten Yeshei	Research Officer (裨益効果担当)
Mr. Toshi Dorji	General Manager of TV (番組編成部長)
Mr. Tshewang Rinzin	Finance Manager (財務担当)
喜久村一	JICA 専門家

Sangaygang Transmitter Station

Mr. Trshi Darjay	Transmitter Station Chief
Mr. Hansjorg Kait	Supervisor of Thomson 100kw Short Wave Transmitter

BBS Jakar 支局

Mr. Wangchuk Tobgyel	Producer BBS Jakar
Mr. Tandin Phuntsho	Reporter BBS Jakar
Mr. Yonten	Technician BBS Jakar

BBS Mongar 支局

Mr. Karma Tenzin Jr	Associate Producer (BBS Mongar)
---------------------	---------------------------------

BBS Kanglung 支局

Mr. Dukpo Wangdi	Head of Bureau /Sr.Reporter	Covers Trashigang & Trashi Yangtse Districts.
Mr. Tenzin Namgay	Assistant Reporter	
Mr. Jigme Lhendup	Producer	
Ms. Dorji Dema	Assistant Reporter	
Mr. Dorji Tshewang	Junior Engineer/Editor	
Mr. Ugyen Wangchuk	Assistant Cameraman	
Mr. Sonam Zangpo	Assistant Cameraman	
Ms. Tshering Choden	Office Assistant	

BBS Trongsa 支局

Mr. Kunzang Yeshe	Reporter
-------------------	----------

(2) Ministry of Finance(財務省)

Dasho Yanki Tobgyel WANGCHUK	Secretary
Mr. Sonam WANGCHUK	Director General, Department of Aid and Debt Management
Mr. Norbu Wangchuk	Program Officer

添付資料— 2
(2)

(3) Ministry of Information & Communication(情報通信省)

Dasho Tashi PHUNTSOG	Secretary
Mr. Yeshey	Assistant Planning Officer

(4) Bhutan Telecom Ltd.(ブータンテレコム)

Mr. Sonam Rinchen	Planning Engineer, Fiber Optical Network
Mr. Karma Tshewang	Planning Engineer, Transmission
Mr. B.K Chheri	Sr. Technical Officer NMSC (Network Management Satellite Center)
Mr. Pema Dorji	Sr. Manager of NMSC

(5) Trashigang Dzongdag(タシガン県庁)

Dasho Mijur Dorji	タシガン県知事
-------------------	---------

(6) CATV 会社

* KR Cable (モンガル)

Mr. Tenzin Thinley	Proprietor
Mr. Yeshi Dorji	Operator
Mr. Choney Dorji	Operator
Mr. Tashi Norbu	Operator

* NP Cable Service (カングルン)

Mr. Ngawang Pezzang	Proprietor
Mr. Chhimi Dorji	Sr. Technician
Mr. Jigme Dorji	Line man

* T N Cable (タシガン)

Mrs Tshering Dema	Proprietor
-------------------	------------

(7) Ministry of Trade & Industry (通産省)

Mr.Ngawang Choeda Rural Electrification Project Department of Energy
Project Manager

Mr.Gem Dorji Executive Engineer Department of Energy

(8) インド国営放送公社 (Doordarshari India:DDI)

Mr. C.K.Jain Station Engineer

(9) ローカル・コンサルタント (Nyima-Yodsel Communication Consultants)

Mr. Nim Karma Sherpa Executive Head & Consultant

テレビ普及率試算に要する資料

地上波テレビ及び CATV の普及率

地上波テレビ及び CATV の普及率の算出に当たっては、下表に示す 2005 年の国勢調査を基本としている。

国勢調査からの抜粋 (Table 8.26) :

HOUSEHOLDS BY COMMUNICATION MEDIA FACILITIES

(所帯別メディア機器所有数及び所有率)

Dzongkhag (県)	Radio / Tape player	TV/ Video	Telephone	Mobile Phone	Computer	Internet
All Dzongkhag	83,183	35,420	21,597	13,703	3,219	1,564
Urban	25,903	24,650	15,394	10,834	2,805	1,412
Rural	57,280	10,770	6,203	2,869	414	152
All Dzongkhag	66.0%	28.1%	17.1%	10.9%	2.6%	1.2%
Urban	20.5%	19.6%	12.2%	8.6%	2.3%	1.1%
Rural	45.5%	8.5%	4.9%	2.3%	0.3%	0.1%

この表からテレビ関係の基本数値は次の通りである。

テレビ関係概要 (2005 年) [全所帯数: 12.6 万]

- ・全国のテレビ台数 : 約 3.5 万台 (所帯当たりの普及率 28%)
- ・全国の CATV 契約者数 : 約 2.5 万人 (所帯当たりの普及率 20%)
- ・全国の地上波テレビの台数 : 約 1 万台 (所帯当たりの普及率 8%)

2008 年末の地上波 (T-TV) テレビ普及率の試算

既存 TV 送信所	所在県 (dzongkhag)	県の総 人口 *1	Rural 地 域の人口	所帯数 (5.0 人/ 所帯)	T-TV 所有者数
1. Sangaygang	Thimphu	98,676	19,491	3,898	
2. Dopchula	Punakha	17,715	15,423	3,085	13,000
3. Yonphula	Tashigang	51,134	44,318	8,864	*2
新設 TV 送信所				受信可能な 人口 (世帯数)	購入希望 世帯 *4
1. Yongla	Pemagatshel	13,864	11,577	11,091 (2,411)	
	Samdrup.J	39,961	29,012	11,989 (2,606)	
2. Bidung *3	Tashigang	51,134	44,318	20,454 (4,447)	
3. Zhemgang	Zhemgang	18,636	15,250	7,454 (1,620)	
4. Takti	Chhukha	74,387	41,461	37,194 (8,086)	35,016
5. Samtse	Samtse	60,100	49,961	30,050 (6,533)	x 30%
6. Tashilling	Trongsa	13,419	10,724	6,710 (1,459)	=10,504
7. Tsirang	Tsirang	18,667	17,001	11,201 (2,435)	
8. Panbang	Sarpang	41,549	28,953	24,929 (5,419)	
T-TV 購入数の合計 (初年度)					10,500
T-TV 所有者の総計					23,500
T-TV 所有者の全所帯(人口)に対する割合					17.0 %

注、*1: 人口、所帯数の出典(Population and Housing Census of Bhutan 2005)が
2005 年であるが、

テレビ所有者の割合を求めないので、計算上の問題はない。

*2: 既存 TV 保有者から試算、年増加率を10%とする。[1 万x(1+0.1)³ =1.3 万

台]

*3: Bidung の TV は、既存送信所 Yonphula に含めて計算

*4: T-TV 購入者は、初年度なので所帯の 30%と推定される。(BBS)

2008 年における地上波テレビによるカバー推定人口 (世帯)

1. 既存3TV送信所のカバー人口

送信所名	受信可能な Districts	Districts の人口	受信可能な人口の割合	TV 受信が可能な人口、(所帯数)
Sangaygang	Thimphu	98,676 (21,451)	80 %	78,941 (17,161)
Dopchula	Punakha	17,715 (25,302)	50 %	8,858 (1,926)
	Wangdue	31,135 (6,768)	50 %	15,568 (3,384)
	Thimphu	98,676 (21,451)	10 %	9,868 (2,145)
	Gasa	3,116 (677)	70 %	2,181 (474)
Yonphula	Trashigang	51,134 (11,116)	50 %	25,567 (5,558)
	Mongar	37,069 (8,063)	20 %	7,414 (1,612)
合 計				148,397 (32,260)
テレビ視聴が可能な人口の全人口に対する割合				22.8 %

(出典: BBS)

2. 新設8TV送信所のカバー人口

Station Name	受信可能な Districts	Districts の人口、(所帯数)	受信可能な人口の割合	TV 受信が可能な人口、(所帯数)
Yongla	Pemagatsel	13,864 (3,014)	80	11,091 (2,411)
	SamdrupJongkha	39,962 (8,687)	30	11,989 (2,606)
Bidung	Trashigang	51,134 (11,116)	40	20,454 (4,447)
Namgaygang	Zhemgang	18,636 (4,051)	40	7,454 (1,620)
Takti	Chukha	74,387 (16,171)	50	37,194 (8,086)
Saureni	Samtse	60,100 (13,065)	50	30,050 (6,533)
Tashilling	Trongsa	13,419 (2,917)	50	6,710 (1,459)
Tsirang	Tsirang	18,668 (4,058)	60	11,201 (2,435)
Gaylegphug	Sarpang	41,549 (9,032)	60	24,929 (5,419)
合 計				161,071 (35,015)
テレビ視聴が可能な人口(世帯)の全人口に対する割合				25.4 %

(出典: BBS)

CATV にカバーされる Urban の人口及び全人口比

(CATV にアクセス可能な人口で、実際の CATV 視聴者数ではない)

県名	県の人口	Urban の人口 (%)		Rural の人口
		%	人口	
Bumthang	16,116	26.1%:	4,203	11,913
Chhukha	74,387	44.3%:	32,926	41,461
Dagana	18,222	10.7%:	1,958	16,264
Gasa	3,116	12.9%:(CATV なし)		2,714
Ha	11,648	21.4%:	2,495	9,153
Lhuentse	15,395	9.6%:	1,476	13,919
Mongar	37,069	19.3%:	7,153	29,916
Paro	36,433	8.0%:	2,932	33,501
Pemagatshel	13,864	16.5%:	2,287	11,577
Punakha	17,715	12.9%:	2,292	15,423
Samdrup Jongkhar	39,961	27.4%:	10,964	28,997
Samtse	60,100	16.9%:	10,139	49,961
Sarpang	41,549	30.3%:	12,596	28,953
Thimphu	98,676	80.2%:	79,185	19,491
Trashigang	51,134	13.3%:	6,816	44,318
Trashy Yangtse	17,740	17.0%:	3,018	14,722
Trongsa	13,419	20.1%:	2,695	10,724
Tsirang	18,667	8.9%:	1,666	17,001
Wangdue	31,135	24.2%:	7,522	23,613
Zhemgang	18,636	18.2%:	3,386	15,250
合計	634,982	30.9%:	196,111	438,871
CATV にアクセス可能な人口 (2005 年)		合計 *1	117,170	人口比: 18.5%
CATV にアクセス可能な人口 (2008 年)		合計 *2	128,000	人口比: 18.5%

出典 : Population & Housing Census of Bhutan 2005

注、*1 Thimphu の Urban 人口は、T-TV に加算されているので、本人口から除く

*2 人口増加率を年3%ととして計算 [117,170 x 1.03³ = 128,000] (人口比は不変)

本表は、2005 年の人口を基に、CATV にカバーされる Urban の人口(アクセス可能人口)を算出した

ものである。ただし、首都ティンプーの CATV 人口が BBS の資料中で T-TV に加算されているので

除外した。(BBS 資料:別紙—4、地上波テレビのカバー推定人口)

インド/ITU 支援衛星回線無料使用期間終了後の対応に関するブータン政府のレター



དཔལ་ལྷན་འགྲུག་གཞུང་། བརྒྱུད་ལྷན་འགྲུག་ལྷན་ཁག་།

Ministry of Information & Communications

Royal Government of Bhutan

Thimphu: Bhutan

PPD/271 347

February 22, 2007

Mr. Kunihiro Yamauchi
Team Leader
The JICA Preliminary Study Mission for Grant Aid to BBSC
(Jan. 29 - Feb. 27, 2007)

Dear Mr. Yamauchi San,

I have the pleasure to convey the confirmation that the Royal Government of Bhutan will provide financing for the rentals of the satellite after the expiration of the Government of India's assistance. This confirmation has been communicated to us by Ministry of Finance in writing.

With best wishes,

Yours sincerely,

Tashi Phuntsog.
Secretary.

CC:

1. The Resident Representative, JICA Office, Thimphu, Bhutan.
2. The Managing Director, BBSC, Thimphu.



དངུལ་ཚེས་ལྷན་ཁག།

ROYAL GOVERNMENT OF BHUTAN
MINISTRY OF FINANCE
TASHICHHO DZONG

DADM/JAP-BBSC/494

Date: February 20, 2007

The Secretary
Ministry of Information and Communication
Thimphu.


Sub: JICA Preliminary Study Mission's Report for Grant Aid to BBSC.

Dear Dasho,

As one of the pre-conditions for Japan Government's Grant Aid to BBSC, the JICA Preliminary Study Mission for Grant Aid to BBSC (January 29 – February 27, 2007) requested confirmation from the RGoB to continue allocation of budget for utilization of the satellite after the termination of the Indian assistance.

In this connection, the Ministry of Finance agrees in principle to provide financing for the rental of the satellite after the expiration of the Government of India's assistance. Dasho can therefore, communicate the same to the JICA Preliminary Study Mission.

Yours sincerely,


(Yanki T Wangchuk)
Finance Secretary

CC: The Managing Director, BBSC, Thimphu.
The Director General, DADM, Mof, Thimphu

週間放送番組時刻表（2007年2月現在）

07 Feb 2007 8:55

NEW TV PROGRAMME SCHEDULE FROM JANUARY 29TH 2007 (EVENING)

Time	Language	Monday	Tuesday	Wednesday	Thursday	Friday	Saturday	Sunday
1755-1800	D				SIGNATURE TUNE			
1800-1803	Z				National Anthem			
1803-1823	O			News Headlines/National News/News Break/1 Primetime Commercial				
1823-1828	N			International News/News Headlines/1 TV-Spot/1 Teaser				
1828-1833	G			Weather/ Currency				
1833-1837	K			3 Public-Announcements /3 Commercials/1 TV Spot				
1837-1900	H A	CA (PT) TSEKIG/ SETPIECE (ST/DWI)	CA (PT) TSEKIG	CA (DAWA)	JAKAR BUREAU	DOCUMENTARY	CA (K.DOLMA) PELJOR	PILING BUREAU
1900-1920	D			News at Seven. Live, Interactive with reports from the Bureaus/ Guests in the Studio				
1920-1923	Z			News Break/1 Primetime Commercial				
1923-1928	O			International News/News Headlines/1 TV Spot/1 Teaser				
1928-1933	N			Weather/ Currency /1 TV Spot				
1933-1937	G			3 Public-Announcements /3 Commercials/1 TV Spot				
1937-2000	K H A	CA (NAM)	ZHUNGCHOG (JUD)	CA (DAWA)	CA (KD) BUREAU REPORT	CA (CD) LEGISLATIVE	CA (CD) LEGISLATIVE	CA (TP)
2000-2020	E			News at Eight. Live & Interactive (with reports from the Bureaus/ Guests in the Studio)				
2020-2023	N			News Break/1 Primetime Commercial				
2023-2028	G			International News/News Headlines/1 TV Spot/1 Teaser				
2028-2033	L			Weather/ Currency /1 TV Spot				
2033-2037	I			3 Public-Announcements /3 Commercials/1 TV Spot				
2037-2100	S H	CA (CR) BUREAU REPORT	CA (AT) MBF	CA (KELSA) H & E	CA (SP)	CA (TC)	BTW (CR)	CA (DAWA) CORRUPTION
2100-2120	D			News Headlines/ National News				
2120-2123	Z			News Break/1 Primetime Commercial				
2123-2128	O			International News/News Headlines/1 TV Spot/1 Teaser				
2128-2133	N			Weather/ Currency /1 TV Spot				
2133-2137	G			3 Public-Announcements /3 Commercials/1 TV Spot				
2137-2200	K H A	KANGLUNG BUREAU	TROWA	SERIAL	SERIAL	NEYTSHUEL CHARZHIP (PG)	TROWA	DOCUMENTARY
2200-2220	E			News Headlines/ National News				
2220-2223	N			News Break/1 Primetime Commercial				
2223-2228	G			International News/News Headlines/1 TV Spot/1 Teaser				
2228-2233	L			Weather/ Currency /1 TV Spot				
2233-2237	I			3 Public-Announcements /3 Commercials/1 TV Spot				
2237-2300	S H	SERIAL	CA	GIPHUG BUREAU	CA (TC/DCCD) SETPIECE	CA (AT) MBF	CA (TC)	CA (TY)
								PRAYER/TRANSMISSION CLOSE

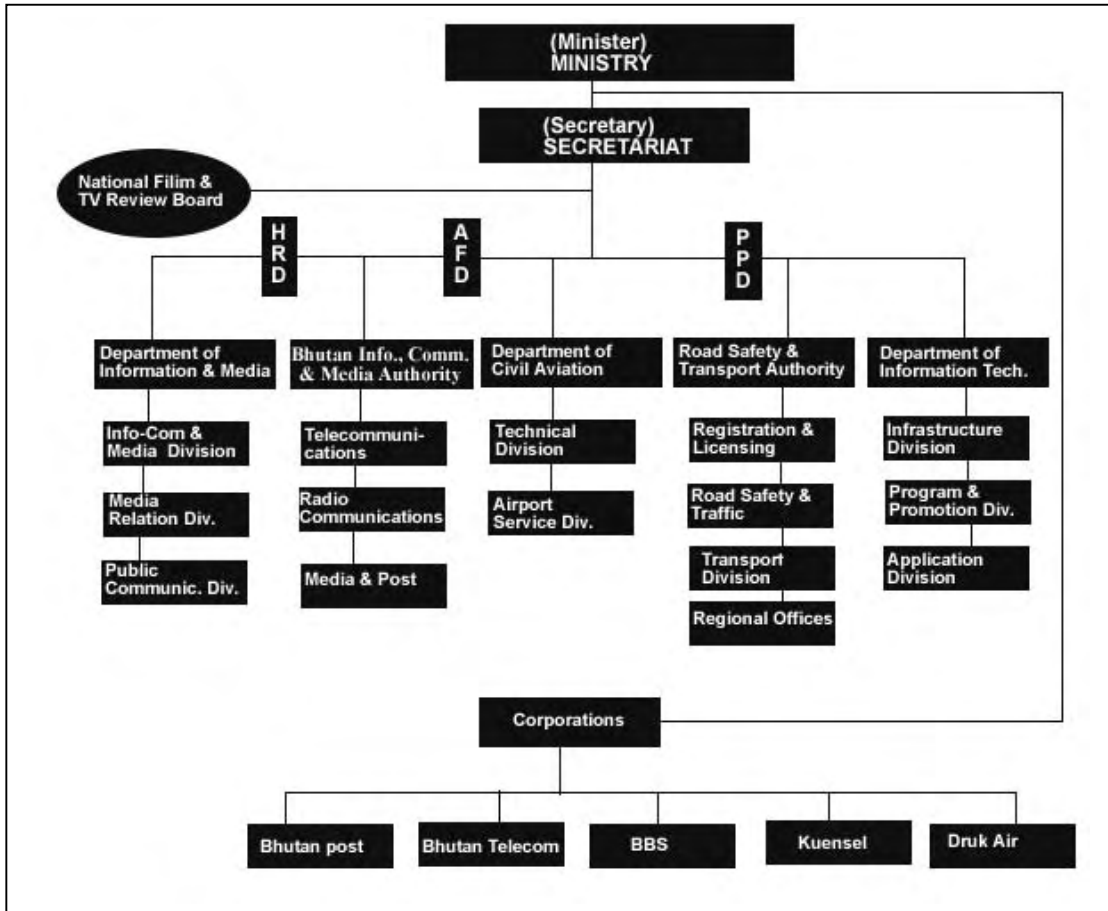
NEW TV PROGRAMME SCHEDULE FROM SEPTEMBER 2006 (AFTERNOON)

Time	Language	Monday	Tuesday	Wednesday	Thursday	Friday	Saturday	Sunday
- 1400	D				music			
1500 - 1505	Z				Afternoon Programme line-up with BG music			
1505 - 1506	O				Signature Tune			
1506 - 1507	N				Programme Trailer (Coming-Up)			
1507 - 1510	G				2/3 Commercials			
1510 - 1535	K H A						SERIAL Episode One	MOVIE/ARCHIVE
1535 - 1536	D				Commercial Break			
1536 - 1600	Z O N						SERIAL Episode Two	MOVIE/ARCHIVE
1600 - 1601	G				Commercial Break			
1601 - 1602	K				Programme Trailer (Coming-Up Next)			
1602 - 1630	H A						MTV on demand	MOVIE/ARCHIVE
1630 - 1631	D				Commercial Break			
1631 - 1658	Z O N						MTV on demand	MOVIE/ARCHIVE
1658 - 1659	G				Commercial Break			
1659 - 1700	K				Programme Trailer (Coming-Up Next)			
1700 - 1800	H A						SERIAL Episode One	MOVIE/ARCHIVE
					Commercial Break			
					Commercial Break		SERIAL Episode Two	MOVIE/ARCHIVE
					Commercial Break			

NEW TV PROGRAMME SCHEDULE FROM SEPTEMBER 2006 (MORNING)

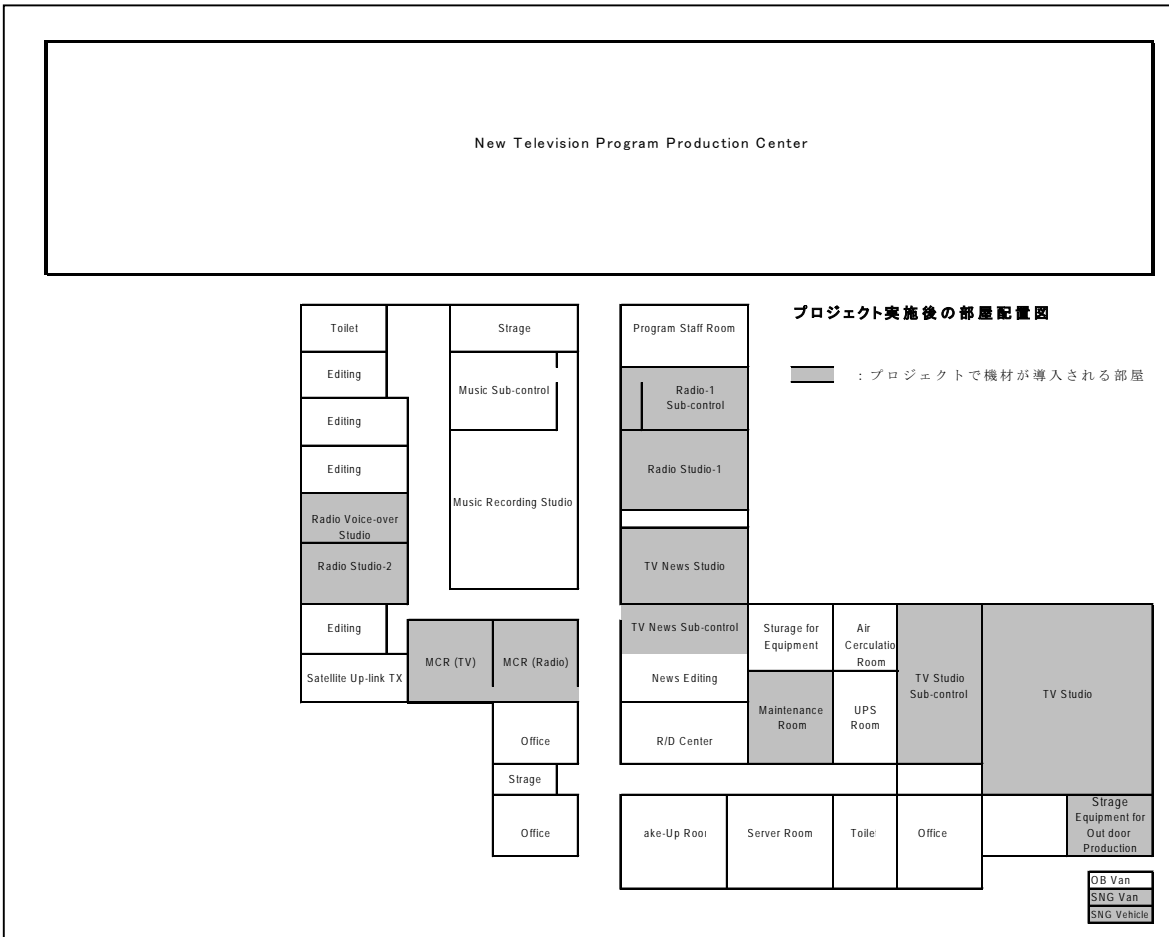
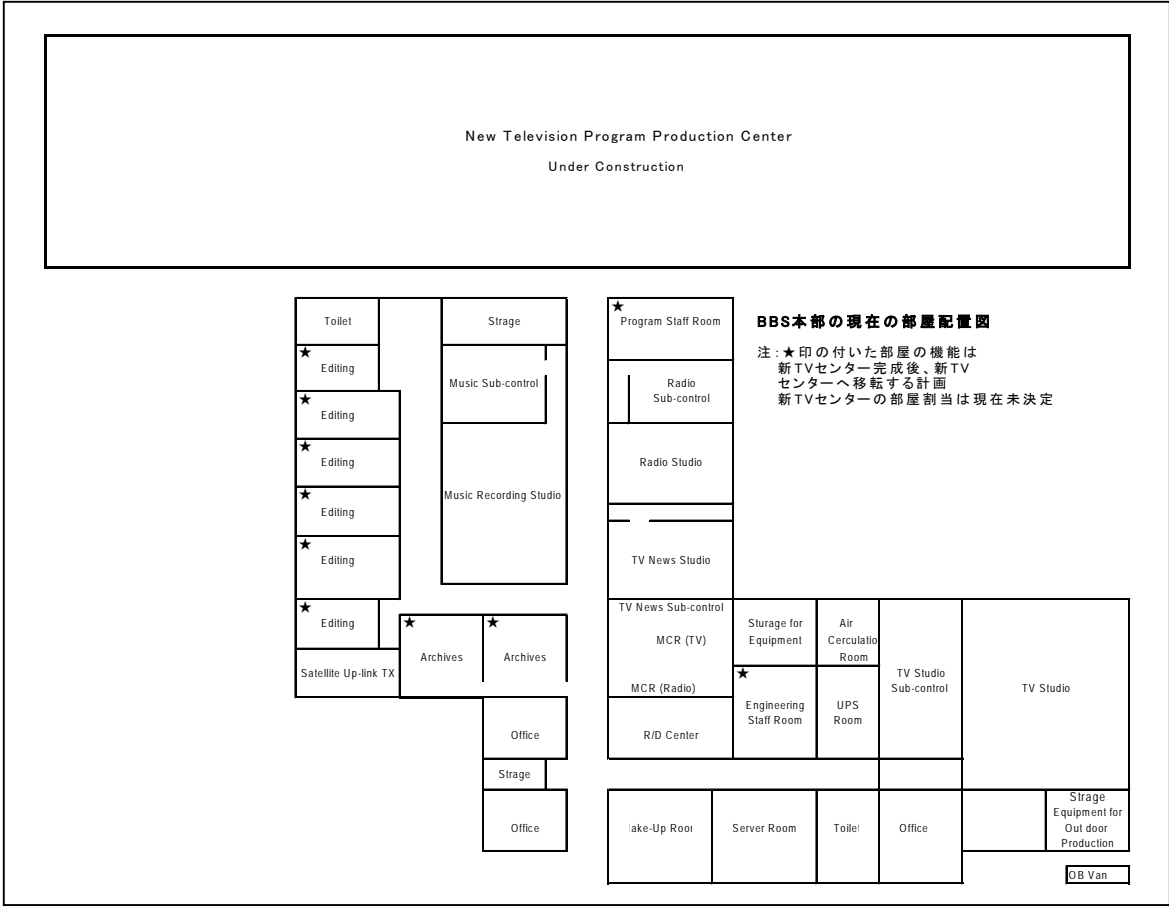
Time	Language	Monday	Tuesday	Wednesday	Thursday	Friday	Saturday	Sunday
0600-0601	D				SIGNATURE TUNE			
0601-0603	Z				National Anthem			
0603-0610	O				News in Brief			
0610-0635	N				Prayer			
0635-0700	G				Discourse			
0700-0701	K				SIGNATURE TUNE			
0701-0720	D				News Headlines/National News			
0720-0722	Z				News Break/1 Primetime Commercial			
0722-0728	O				International News / News Headlines / 1 TV Spot / 1 Teaser			
0728-0733	N				Weather / Currency / 1 TV Spot			
0733-0737	G				3 Public Announcements / 3 Commercials / 1 TV Spot			
0737-0800	K DZ-A	POLITICAL(JUD) (CA)	POLITICAL (LEGIS.)(CA)	TSERIG (CA)	SOCIAL (MIDAY) (CA)	SOCIAL (SANAM) (CA)	SOCIAL(H&E) (CA)	POLITICS(EXE) (CA)
0800-0820	E				News Headlines/ National			
0820-0823	N				News Break / 1 Primetime Commercial			
0823-0828	G				International News / News Headlines / 1 TV Spot / 1 Teaser			
0828-0833	L				Weather / Currency / 1 TV Spot			
0833-0837	I				3 Public Announcements / 3 Commercials / 1 TV Spot			
0837-0900	S DZ-H	SOCIAL(CHILDREN) (CA)	POLITICAL (EXE) (CA)	SOCIAL (YOUTH) (CA)	SOCIAL (WOMEN) (CA)	ECONOMICS(MBF) (CA)	SOCIAL(H&E) (CA)	TSERIG (CA)
0900-0920	D				News Headlines / National News			
0920-0923	Z				News Break / 1 Primetime Commercial			
0923-0928	O				International News / News Headlines / 1 TV Spot / 1 Teaser			
0928-0933	N				Weather / Currency / 1 TV Spot			
0933-0937	G				3 Public Announcements / 3 Commercials / 1 TV Spot			
0937-1000	E K A	KANGLUNG BUREAU	TROWA	SERIAL	SERIAL	BTW	TROWA	DOCUMENTARY
1000-1020	E				News Headlines / National News			
1020-1023	N				News Break / 1 Primetime Commercial			
1023-1028	G				International News / News Headlines / 1 TV Spot / 1 Teaser			
1028-1033	L				Weather / Currency / 1 TV Spot			
1033-1037	I				3 Public Announcements / 3 Commercials / 1 TV Spot			
1037-1100	S DZ-H	OSHIN SERIAL	ICT	G/PHUG BUREAU	JAKAR BUREAU	ICT	BTW	GUEST OF THE WEEK (CA)
								PRAYER / TRANSMISSION CLOSE

情報・通信省組織構成図



政府組織構成図

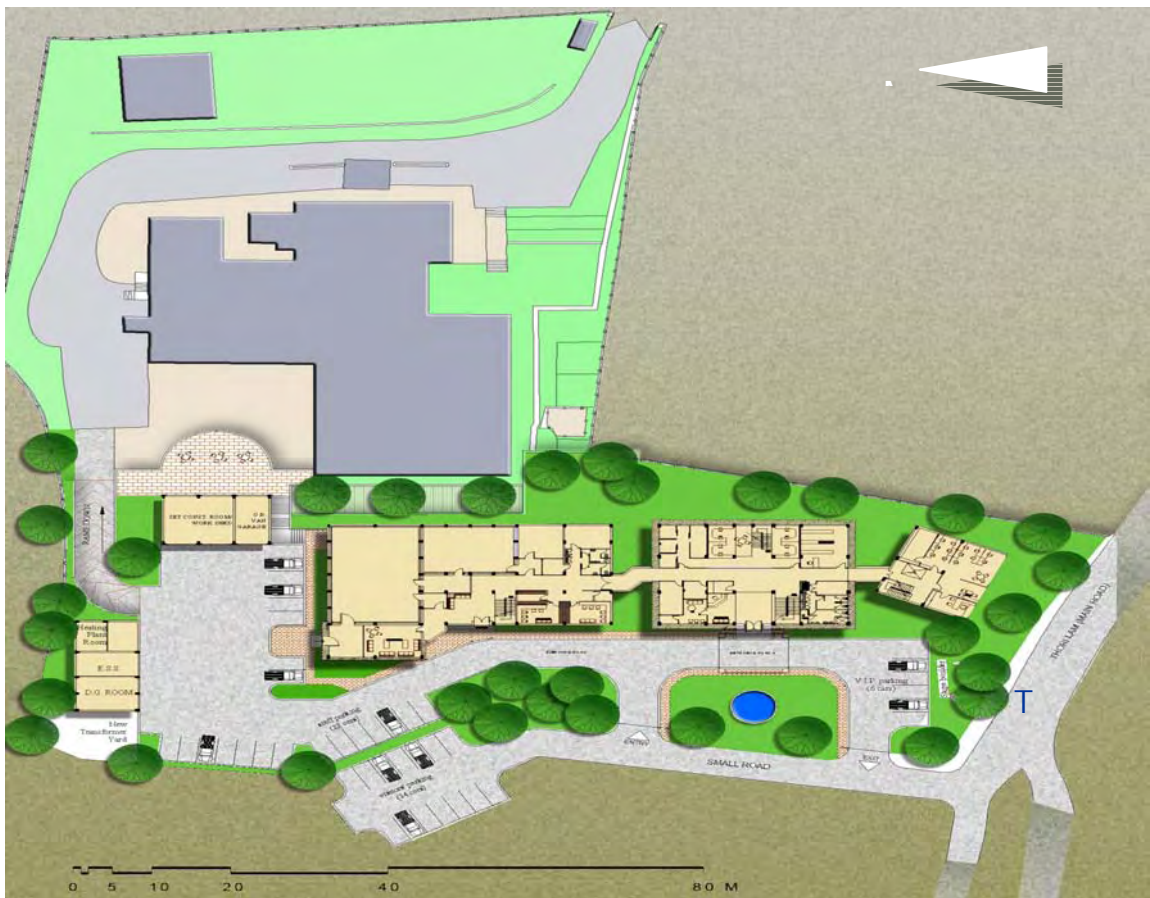
新 TV センター完成に伴う部屋割当予定平面図及び新 TV センター平面図



新センター完成図及び平面図



新テレビセンター完成模型



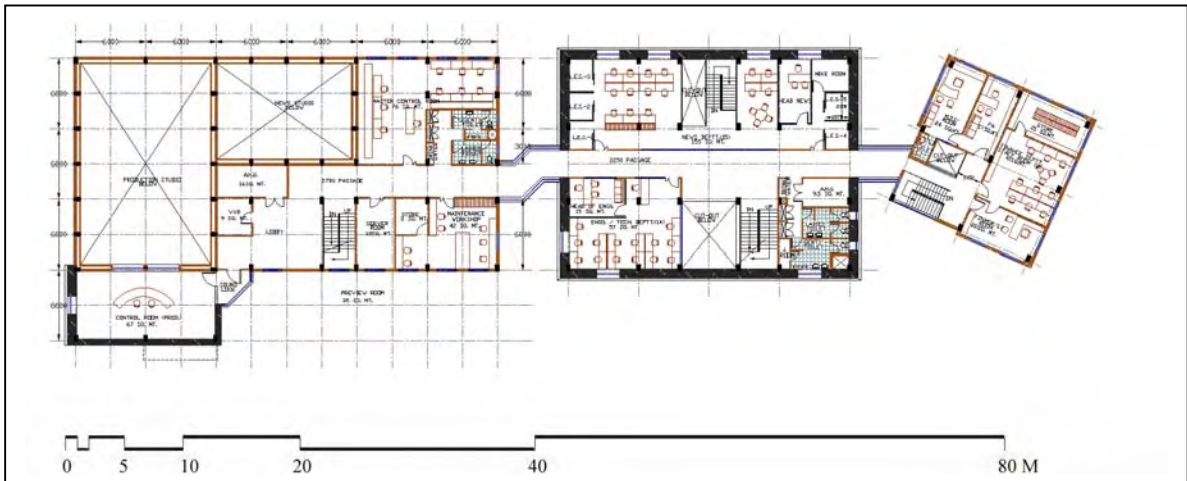
新テレビセンター建設敷地配置図

(黒い部分が既存の建物)

新テレビセンター平面図



1階平面図



2階平面図



3階平面図

新 TV センター用調達予定機材リスト

A. Main Studio			
No.	Description	Qty	Remarks
1	Digital Studio Camera Chains with individual RCPs for all 4 cameras and camera selection switcher.	4	Similar to SONY DXC-D50, Hitachi SK 888, Ikegami HL 60AW and Thomson LDK 300.
2	CAMERA SUPPORT SYSTEM with two stage heavy duty tripods, matching EFP Studio Skid and dollies for Studio applications.	3	Tripod Head simialr to Vision 250 of Vinten with dual extendable panhandles Or Video 75 plus studio of Sachtler with dual extendable panhandles and 150 mm Ball base.
3	CAMERA SUPPORT SYSTEM with two stage heavy duty tripods, matching EFP Studio Skid and dollies for Studio applications.	1	Tripod Head simialr to Vision 250 of Vinten with dual extendable panhandles and elevation unit for quick height range adjustment Or Video 75 plus studio of Sachtler with dual extendable panhandles, hand crank column and 150 mm Ball base with all accessories.
4	Professional quality 2/3" ENG 19X /20X or higher ZOOM LENS with built in extender, servo zoom and manual focus.	3	Similar to Fujinon, Canon etc. Please essentailly quote other accessories such as zoom and focus demand units.
5	Professional quality wide angle 2/3" ENG 12X /13X or higher ZOOM LENS with built in extender, servo zoom and manual focus.	1	Similar to Fujinon A 13x6.3BERM or similar lens from Canon
6	16 Input, 1.5 ME Digital Production Switcher	1	Similar to ROSS, Snell & Wilcox, Thomson, and SONY
7	On Air broadcast quality Mixing Console with 16 channel faders, with analog audio Inputs and Outputs. All audio inputs and outputs should be on XLR. The mixer must have P&G faders.	1set	Similar to Soundcraft, Studer, SSL, Carlec
8	Dual Channel Character Generator with SDI I/O and analog preview output.	1	Similar to C-DAC MOVE CG PRO, Inscriber Inca CG, Pinnacle Deko cast.
9	TFT Video Monitors 20" with SDI and PAL Input.	2	Similar to SONY, KROMA, JVC, BOLAND.
10	TFT Video Monitors 14"	16	Similar to SONY, KROMA, JVC, BOLAND.

11	TFT Video Monitors 9"	4	Similar to SONY, KROMA, JVC, BOLAND.
12	Analaog waveform monitor	1	Similar to 1731 of Tektronix
13	Digital waveform monitor	1	Similar to 601 M of Tektronix, LD 5100 of Leader.
14	DVCAM Editing Recorders with SDI and IEEE 1394 I/Os.	3	SONY DSR-1800P
15	Amplispeakers	4	Similar to Genelec, JBL and Tannoy.
16	CD/MD Palyer	2	Similar to TASCAM MD-CD1
17	Studio Speakers for Fold Back.	2	of standard make
18	Essential installation material such as video/audio patch panles, equipment racks, cables, connectors, cable trays and other essential accessories	1 lot	
19	Any other equipments and accessories to complete the above system	1 lot	

B. News Studio

No.	Description	Qty	Remarks
1	Digital Studio Camera Chains with individual RCPs for all 3 cameras and camera selection switcher.	3	Similar to SONY DXC-D50, Hitachi SK 888, Ikegami HL 60AW and Thomson LDK 300.
2	CAMERA SUPPORT SYSTEM with two stage heavy duty tripods, matching EFP Studio Skid for Studio applications.	1	Simialr to Vision 250 of Vinten with dual extendable panhandles and Video 75 plus studio of Sachtler with dual extendable panhandles and 150 mm Ball base.
3	CAMERA SUPPORT SYSTEM with two stage heavy duty tripods, matching EFP Studio Skid for Studio applications.	2	Simialr to Vision 250 of Vinten with dual extendable panhandles and elevation unit for quick height range adjustment Or Video 75 plus studio of Sachtler with dual extendable panhandles, hand crank coloumn and 150 mm Ball base.
4	Professional quality 2/3" ENG 20X or higher ZOOM LENS with built in extender, servo	3	Similar to Fujinon, Canon etc. Please essentially quote other accessories such

	zoom and manual focus.		as zoom and focus demand units.
5	Professional wide angle 2/3" ENG 12X /13X or higher ZOOM LENS with built in extender, servo zoom and manual focus.	1	Similar to Fujinon A 13x6.3BERM or similar lens from Canon
6	16 Input, 1.5 ME Digital Production Switcher	1	Similar to ROSS, Snell & Wilcox, Thomson, and SONY
7	On Air broadcast quality Mixing Console with 16 channel faders, with analog audio Inputs and Outputs. All audio inputs and outputs should be on XLR. The mixer must have P&G faders.	1set	Similar to Soundcraft, Studer, SSL, Carlec
8	Dual Channel Character Generator with SDI I/O and analog preview output.	1	Similar to C-DAC MOVE CG PRO, Inscribe Inca CG, Pinnacle Deko cast.
9	TFT Video Monitors 20" with SDI and PAL Inputs.	2	Similar to SONY, KROMA, JVC, BOLAND.
10	TFT Video Monitors 14"	17	Similar to SONY, KROMA, JVC, BOLAND.
11	TFT Video Monitors 9"	3	Similar to SONY, KROMA, JVC, BOLAND.
12	Analog waveform monitor	1	Similar to 1731 of Tektronix
13	Digital waveform monitor	1	Similar to 601 M of Tektronix, LD 5100 of Leader.
14	DVCAM Editing Recorders with SDI and IEEE 1394 I/Os.	1	SONY DSR-1800P
15	DVCAM Editing Player with SDI and IEEE1394 Outputs	2	SONY DSR-1600P
16	TBC remote Controller for DVCAM Player/Recorder	2	SONY UVR-60P
17	Amplispeakers	4	Similar to Genelec, JBL and Tannoy.
18	Teleprompter with two display unit.	1	Similar to BDL Autoscript, Autocue
19	CD/MD Player	2	Similar to TASCAM MD-CD1
20	Studio Speakers for Fold Back.	2	Of standard make

21	Essential installation material such as video/audio patch panels, equipment racks, cables, connectors, cable trays and other essential accessories	1 lot	
C. Equipment for Master Control Room and other Common Facilities			
No.	Description	Qty	Remarks
1	32x32 Digital Video and analog audio Router expandable to 64x64, with one XY RCP, 4 Single Bus RCPs and 2 multibus RCPs.	1	Similar to Leitch, Thomson GrassValley, Quartz, Network Electronics
2	Digital Frame Synchronizer	2	Similar to X 75D.
3	Digital Logo Generators	2	Similar to Leitch, Evertz, Eyeheight, Miranda.
4	Dual Digital Sync Pulse Generaor with auto change over unit.	1	Similar to tektronix, Evertz, Triology.
5	Centralized GPS Clock System with 7 digital clock displays and 7 analog clock displays with all the accessories.	1 lot	Similar to Leitch, Evertz
6	Digital waveform monitor	1	Similar to 601 M of Tektronix, LD 5100 of Leader.
7	TFT Video Monitors 14" with SDI and PAL Input.	8	Similar to SONY, KROMA, BOLAND.
8	High Quality Digital Intercom System with 32 port matrix, 2 Producer/Director Remote Station with gooseneck microphones for two Studios, 10 Desk mount Remote Stations with gooseneck microphones for operators, four wireless belt packs for Floor Managers with headsets (Two for each Studio), 4 wired belt packs for Anchors with ear plugs (Two for each studio).	1 lot	Similar to Triology, Clearcom, Kroma, Reidel.
9	Amplispeakers	2	Similar to Genelec, JBL and Tannoy.
10	24x2 Digital Video Patch Panels for both the studios and MSR with patch cords of different length.	1 lot	Similar to ADC, Canare, Media.

11	Audio Patch Panels for both the studios and MSR with patch cords of different length.	1 lot	Similar to ADC, Canare.
12	Equipment Racks for both the studios and MSR.	1 lot	Similar to President.
13	Wired Lapel Microphones	12	Similar to Sennheiser
14	Handheld Condenser Microphones	12	Similar to Sennheiser
15	Wireless Lapel Microphones	8	Similar to Sennheiser
16	Wireless Handheld condenser microphones	6	Similar to Sennheiser
17	DVD Writers with HDD.	4	
19	Shot Gun Microphones	4	Similar to Sennheiser
20	SDI Video/Audio Monitors	1	Similar to Wholer Tech.
21	Digital Two Channels Telephone Hybrid	2	Similar to Telos, Comrex
22	21" Flat TV Receiver	6	Similar to SONY.
23	14" Flat TV Receiver	4	Similar to SONY.
24	42" Plasma with SDI and PAL Inputs	3	Similar to SONY, Panasonic, JVC.
25	Quad Splitter with four PAL Inputs.	2	Similar to Maranda, Image Video, Evertz, Zandar.
26	Rasterizer with audio monitoring option.	1	Similar to WVR 6001 of tektronix.
27	Digital Peripheral Equipment		Similar to Vistek, ROSS, Snell & Wilcox, Thomson, Miranda, Evertz, Crystal Vision, Probel.
a	DVDA	8	
b	Analaog VDA	6	
c	PAL to SDI onverter	4	
d	Component to SDI converter	2	
e	DAC	4	
f	Embedder with SDI video and stereo analog audio inputs.	6	
g	Deembedder with SDI video and analog audio outputs including PAL monitoring output.	6	

h	Analog Audio Distribution Amplifiers	8	
i	Analog Audio Delay units	4	
j	AES/EBU to Analog Audio Converter	4	
k	Analog Audio to AES/EBU Digital Audio Converters	4	
l	Rack Frame Units each with the capacity of 10 or more cards, with redundant power supplies.	8	
28	Audio Processor with Stereo or Dual Analog Audio I/Os	1	Similar to Junger d02
29	500 Mhz Dual Channels Digital Storage Oscilloscope	1	Similar to HP and Tektronix
30	Installation Material such as cables, connectors, cable ties, cable trays etc.	As Required	
31	Operation and Maintenance Manual	1 lot	
32	Digital Multimeter	2	
33	Soldering Station with vacuum pump and soldering lead etc.	2	
34	Audio Analyzer Test Set	1 No.	Similar to Neutrik A2-D
35	Set of tools including Crimping tools, and general purpose tools	3 lots	

D. Post Production Facilities

1	A/B Roll Equipment		
a	DVCAM Editing recorder	1	SONY DSR-2000P
b	DVCAM Editing Player	2	SONY DSR-1600P
c	DVE cum Switcher	1	Similar to DFS 700 of SONY.
d	Audio Mixer	1	Similar to M-8 of Soundcraft
e	TFT Video Monitors	3	Similar to SONY, KROMA, JVC, BOLAND.
f	Edit Controller	1	Similar to AG-A 850 of Panasonic.

g	Amplispeaker	1	Similar to Genelec, JBL and Tannoy.
E. ENG Facilities			
1	DVCAM ENG Camcorders with soft carrying case, Camera Rain Cover, Electret Condenser Microphones, Microphone cable, DV Cable	3	SONY DSR-390-PK
2	Matching Camera Support System	3	Similar to Vision 3 of Vinten
3	Anton Bauyer ProPac 65	6	Anton Bauyer
4	Dual Battery Charger for charging above batteries	3	Anton Bauyer
5	DVCAM ENG Camcorders each with two batteries and one charger and other accessories including microphone.	2	SONY HDV 100
6	Matching Camera Support System	2	with a carrying capacity of approximately 3 Kg.
7	Camera mounted battery operated lights.	12	Similar to Anton Bauyer, Ianiro
8	Portable Light kits with umbrella and flight carrying case	3 sets	Similar to Sachtler, Canara, and Aultra
9	Handheld ENG 500 watt mains operated Halogen Lights	8	Similar to Sachtler, Canara, and Aultra
11	Handheld Portable Digital waveform monitors	1	Similar to Tektronix, Videotek
12	Light Intensity and color temperature meter	1	

No.	Description	Qty	Remarks
1.1	NRCS HARDWARE		
a	NRCS Database Application Servers in clustering including archive server complete with storage with RAID protection, mounting frame, redundant power supplies & fans, interface etc.	1 lot	Similar to IBM, HP, Compaq,

b	Journalist client PCs complete with built-in speakers, keyboard, optical mouse, SVGA TFT 17" monitor	15 Nos.	Similar to IBM, HP, Compaq,
c	Application client licences	10	
d	Heavy Duty laser network printer	2	Similar to HP 4300N
e	Multi port serial card, network interface cards	1 lot	
f	Hubs, routers and jack panels etc.	1 lot	
g	Other required hardware including equipment racks etc. Networking peripherals including switches, interfaces, adaptors, redundant components	1 lot	
1.2	NRCS Software		
a	Comprehensive Newsroom System consisting of: core broadcasting service, database, prompting, wires, MOS Interface, 24x7 channel, email, messaging/SMS, user portal, CG interface, tape archive, transfer agent, strong security, replicator software	1	Similar to Octopus, ENPS
b	NRCS Servers Operating Systems	1 lot	
c	Machine control Interfaces for Teleprompters & Character Generators.	As required	
d	Machine control Interfaces for Video Server, CGs, NLEs, and graphics to be integrated in the system	As required	
e	Conversion hardware for lower speed wires.	As required	
2	INGEST - VIDEO SERVERS AND RELATED EQUIPMENT		
a	Broadcast Quality Servers complete with the required SDI I/O Ports, fiber channel interfaces, control module, Gigabit ethernet networking, redundant power supply, redundant fans, mounting frame each with 2 bi-directional paths etc.	4 Nos.	Similar to Avid, Thomson Grass Valley, Leitch, Seachange, Omneon etc.
b	Application software	1 lot	
c	Software for data protection, management and control, networking	1 lot	
d	Software for data protection, browse management and control, networking (to be listed)	1 lot	

e	Other engineering components	1 lot	
g	Rasterizer similar to Tektronix	1	
h	Other engineering components	1 lot	
3	STORAGE		
a	Fiber channel storage for high resolution ingesting with RAID protection with the effective storage of 400 hours @ DV 25 and 4 channel of audio and VBI complete with mounting frame, redundant power supply, redundant fans with two chassis etc.	1 lot	
4	CONTROL Workstations	Similar to HP/IBM	
a	Ingest	3	
c	Workstations for PCRs	2	
d	Graphics control	2	
e	Automation control (System administrator)	2	
f	Transmission control PCs	2	
g	Additional workstations	2	
5	High Quality Non Linear Editing Systems and Browse Edit Systems		
a	Non Linear Editing Editing Suites each with two 17" TFT monitors complete in all respects.	8	Similar to Final Cut Pro, Avid Express Pro, Canopus Edius SD, Adobe etc.
b	Audio levellers for voice over	4 set	
c	Browse Edit Licenses	4	Similar to INCITE
6	MASTER CONTROL ROOM		
a	Master (Transmission) Switcher complete with all features, redundant power supplies etc.	1 Lot	Simialr to Eyeheight, Quartz, Oxtel etc.
7	Centralized Graphic System & Character Generators		
a	Real time On Air Broadcast Graphic Systems with Audio embedded SDI I/O and integrating Equipment.	2	similar to Wasp3D, VizRT

b	3D Graphic Systems with suitable workstation of HP or IBM or simialr with Xeon Processor, 1GB or higher RAM, 140 GB or higher video storage, 20" TFT monitor, high quality graphic card with SDI I/O and other accessories.	2 sets	Similar to 3D Studio Max
c	All other associated hardware and software for making centralized graphic system.	1 lot	
d	Necessary hardware, software and other accessories for integrating 2 character generators which are part of studio setup.	1 lot	
8	Miscellaneous Equipment		
a	32x32 SDI router complete with redundant power supplies, mounting frame, automation control, other required interfaces one XY remote control panels and 2 multi bus & 2 serial bus panel.	1 lot	Similar to Leitch, Thomson GrassValley, Quartz,
b	Digital dual SPG with all accessories	1 lot	Similar to tektronix, Evertz, Triology.
c	Device controllers for controlling various devices.	1 lot	
d	MOS Gateway (If required)	1 lot	
e	Standard 19" Equipment Racks for installing all the equipment with enough empty space complete with noiseless fans, power supply distribution etc.	1 lot	
f	KVM Switch	1 lot	
g	All installation materials such as FC switches & Ethernet switches (Including redundant switches), video, audio, data cables, connectors, harnesses, tie clips etc.	1 lot	
h	Coles 4104 Lip Microphones with mounting arrangement for voice over	4 Nos.	
i	Dual Head phones of standard make	4 Nos.	
j	14" TFT Broadcast colour monitors.	12 Nos.	Similar to Sony, Boand, Kroma
k	All other peripheral equipment such as DVDAs, ADAs, VDAs, converters, multiplexers, de-multiplexers as per the system requirement.	1 lot	Similar to Snell & Wilcox, Evertz
l	Rasterizer with audio monitoring option	1	
m	Technical Furniture	1 lot	

9	Power Supply Accessories and all other essential power supply requirements	1 lot	
10	TECHNICAL JOURNALS and DOCUMENTATION		
a	Operation Manuals for all equipment	1 lot	
b	Maintenance/ service Manuals for all equipment	1 lot	
c	Operation manual for automation system	1 lot	
d	Diagnostics, maintenance, upgradation manuals for the entire automation system.	1 lot	

地上波テレビ送信所及びBBS支局ロケーションマップ

地上波テレビ送信所及びBBS支局

県名

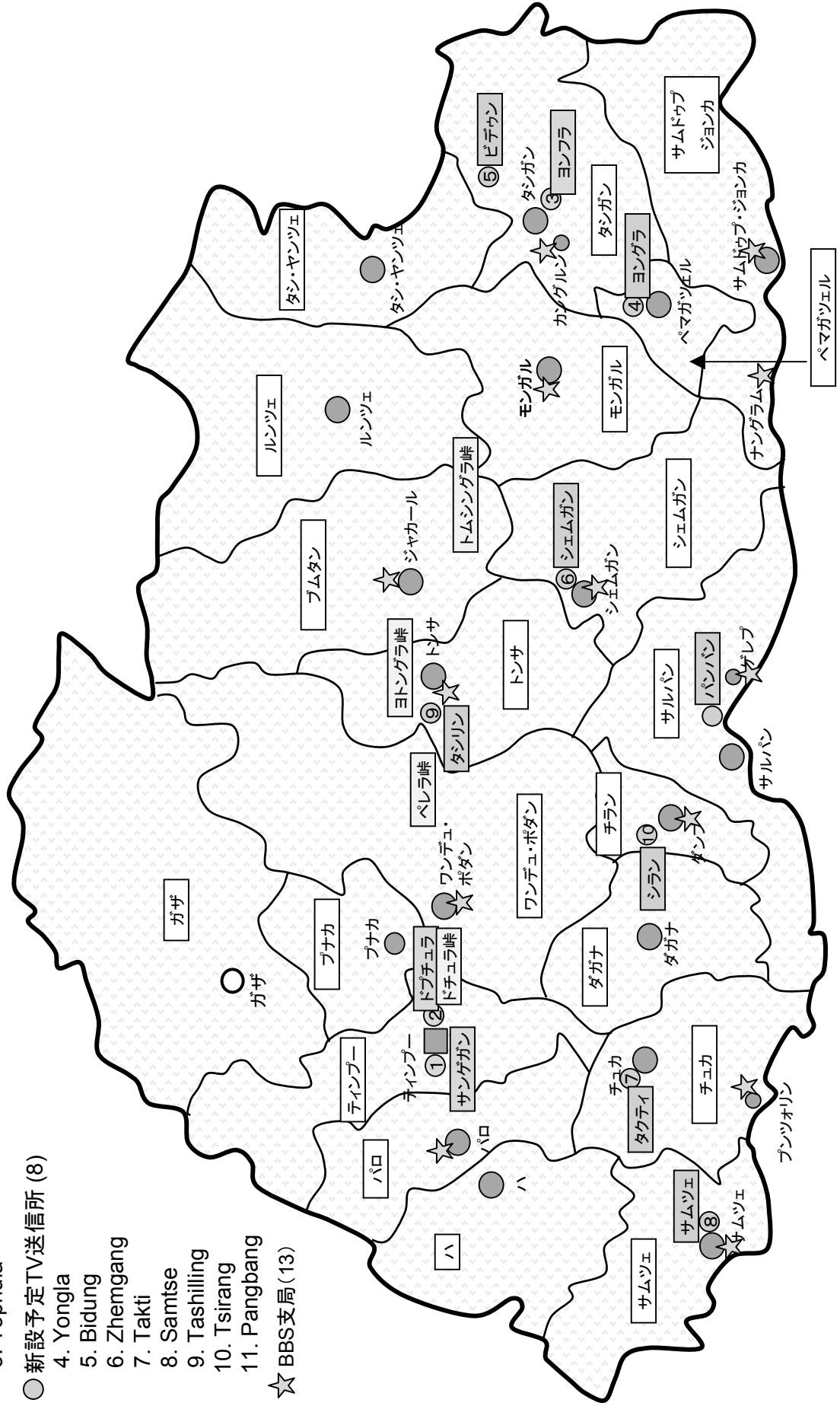
● 既設TV送信所 (3)

1. Sangaygang
2. Dopchula
3. Yophula

● 新設予定TV送信所 (8)

4. Yongla
5. Bidung
6. Zhemgang
7. Takti
8. Samtse
9. Tashilling
10. Tsirang
11. Pangbang

☆ BBS支局 (13)



ブータンテレコム回線使用料リスト

Point to Point Leased Line:

It is a dedicated line connecting two offices for transferring data. This service is provided for national and International connectivity. The data will be very secure since only two offices are connected directly.

Distance	64K	128K	256K	320K	512K	768K	960K	1 Mb*	1600K	1792K	2Mb
<=5	1500	2596	4982	6097	8000	8000	8000	8000	8000	8000	8000
10	2150	3723	7152	8757	12100	12100	12100	12100	12100	12100	12100
15	3030	5245	10070	12326	16500	16500	16500	16500	16500	16500	16500
20	3140	5452	10503	12879	19405	20900	20900	20900	20900	20900	20900
25	3250	5658	10931	13424	20324	25000	25000	25000	25000	25000	25000
30	3360	5861	11348	13952	21201	28500	28500	28500	28500	28500	28500
35	3470	6064	11765	14480	22078	30104	32000	32000	32000	32000	32000
40	3580	6268	12183	15008	22954	31456	35500	35500	35500	35500	35500
45	3690	6471	12600	15536	23831	32808	37425	38645	39000	39000	39000
50	3800	6674	13017	16064	24708	34160	39125	40462	42500	42500	42500
55	3855	6776	13225	16328	25146	34836	39975	41371	44250	44250	44250
60	3910	6878	13434	16592	25584	35512	40825	42279	46000	46000	46000
65	3965	6979	13643	16856	26022	36188	41675	43188	47750	47750	47750
70	4020	7081	13851	17120	26461	36864	42525	44096	49000	49000	49500
75	4075	7182	14060	17384	26899	37540	43375	45004	51250	51250	51250
80	4130	7284	14268	17648	27337	38216	44225	45913	53000	53000	53000
85	4185	7386	14477	17912	27776	38892	45075	46821	54750	54750	54750
90	4240	7487	14686	18176	28214	39568	45925	47730	56500	56500	56500
95	4295	7589	14894	18440	28652	40244	46775	48638	58250	58250	58250
100	4350	7691	15103	18704	29091	40920	47625	49547	59792	60000	60000

Distance	64K	128K	256K	320K	512K	768K	960K	1 Mb*	1600K	1792K	2Mb
105	4405	7792	15311	18968	29529	41596	48475	50455	61236	61750	61750
110	4460	7894	15520	19232	29967	42272	49325	51364	62681	63500	63500
115	4515	7996	15728	19496	30406	42948	50175	52272	64125	65250	65250
120	4570	8097	15937	19760	30844	43624	51025	53180	65569	66895	67000
125	4625	8199	16146	20024	31282	44300	51875	54089	67014	68522	68750
130	4680	8301	16354	20288	31721	44976	52725	54997	68458	70149	70500
135	4735	8402	16563	20552	32159	45652	53575	55906	69903	71776	72250
140	4790	8504	16771	20816	32597	46328	54425	56814	71347	73404	74000
145	4845	8605	16980	21080	33035	47004	55275	57723	72792	75031	75750
150	4900	8707	17188	21344	33474	47680	56125	58631	74236	76658	77500
155	4955	8809	17397	21608	33912	48356	56975	59540	75681	78285	79250
160	5010	8910	17606	21873	34350	49032	57825	60448	77125	79912	81000
165	5065	9012	17814	22137	34789	49708	58675	61356	78569	81539	82750
170	5120	9114	18023	22401	35227	50384	59525	62265	80014	83166	84500
175	5175	9215	18231	22665	35665	51060	60375	63173	81458	84793	86250
180	5230	9317	18440	22929	36104	51736	61225	64082	82903	86420	88000
185	5285	9419	18648	23193	36542	52412	62075	64990	84347	88048	89750
190	5340	9520	18857	23457	36980	53088	62925	65899	85792	89675	91500
195	5395	9622	19066	23721	37419	53764	63775	66807	87236	91302	93250
200	5450	9724	19274	23985	37857	54440	64625	67716	88681	92929	95000
205	5505	9825	19483	24249	38295	55116	65475	68624	90125	94556	96750
210	5560	9927	19691	24513	38734	55792	66325	69532	91569	96183	98500
215	5615	10028	19900	24777	39172	56468	67175	70441	93014	97810	100250
220	5670	10130	20109	25041	39610	57144	68025	71349	94458	99437	102000
225	5725	10232	20317	25305	40048	57820	68875	72258	95903	101064	103750
230	5780	10333	20526	25569	40487	58496	69725	73166	97347	102692	105500
235	5835	10435	20734	25833	40925	59172	70575	74075	98792	104319	107250
240	5890	10537	20943	26097	41363	59848	71425	74983	100236	105946	109000
245	5945	10638	21151	26361	41802	60524	72275	75892	101681	107573	110750
250	6000	10740	21360	26625	42240	61200	73125	76800	103125	109200	112500
255	6055	10842	21569	26889	42678	61876	73975	77708	104569	110827	114250
260	6110	10943	21777	27153	43117	62552	74825	78617	106014	112454	116000
265	6165	11045	21986	27417	43555	63228	75675	79525	107458	114081	117750
270	6220	11147	22194	27681	43993	63904	76525	80434	108903	115708	119500
275	6275	11248	22403	27945	44432	64580	77375	81342	110347	117336	121250

Distance	64K	128K	256K	320K	512K	768K	960K	1 Mb*	1600K	1792K	2Mb
280	6330	11350	22611	28209	44870	65256	78225	82251	111792	118963	123000
285	6385	11452	22820	28473	45308	65932	79075	83159	113236	120590	124750
290	6440	11553	23029	28737	45746	66608	79925	84068	114681	122217	126500
295	6495	11655	23237	29001	46185	67284	80775	84976	116125	123844	128250
300	6550	11756	23446	29265	46623	67960	81625	85884	117569	125471	130000
305	6605	11858	23654	29529	47061	68636	82475	86793	119014	127098	131750
310	6660	11960	23863	29793	47500	69312	83325	87701	120458	128725	133500
315	6715	12061	24072	30057	47938	69988	84175	88610	121903	130352	135250
320	6770	12163	24280	30321	48376	70664	85025	89518	123347	131980	137000
325	6825	12265	24489	30585	48815	71340	85875	90427	124792	133607	138750
330	6880	12366	24697	30849	49253	72016	86725	91335	126236	135234	140500
335	6935	12468	24906	31113	49691	72692	87575	92244	127681	136861	142250
340	6990	12570	25114	31378	50130	73368	88425	93152	129125	138488	144000
345	7045	12671	25323	31642	50568	74044	89275	94060	130569	140115	145750
350	7100	12773	25532	31906	51006	74720	90125	94969	132014	141742	147500
355	7155	12875	25740	32170	51445	75396	90975	95877	133458	143369	149250
360	7210	12976	25949	32434	51883	76072	91825	96786	134903	144996	151000
365	7265	13078	26157	32698	52321	76748	92675	97694	136347	146624	152750
370	7320	13179	26366	32962	52759	77424	93525	98603	137792	148251	154500
375	7375	13281	26574	33226	53198	78100	94375	99511	139236	149878	156250
380	7430	13383	26783	33490	53636	78776	95225	100420	140681	151505	158000
385	7485	13484	26992	33754	54074	79452	96075	101328	142125	153132	159750
390	7540	13586	27200	34018	54513	80128	96925	102236	143569	154759	161500
395	7595	13688	27409	34282	54951	80804	97775	103145	145014	156386	163250
≥400	7650	13789	27617	34546	55389	81480	98625	104053	146458	158013	165000

1 Mbps = 1024 Kbps

Note: Distance in Kilometres

Table A.2: One Time Set-up Fee/Shifting Fee for Domestic leased lines

Sl No.	Leaseline Type	Setup Fee	Shifting Fee
1.	64 Kbps to 2 Mbps	Nu. 5,000.00	Nu. 5,000.00
2.	Above 2 Mbps till 8 Mbps	Nu. 10,000.00	Nu. 10,000.00



འབྲུག་འབྲུག་འབྲུག་

BHUTAN TELECOM

BT/ADM/09/2004 | 3297

August 3, 2004

The Managing Director,
Bhutan Broadcasting Service Corporation,
Thimphu

Subject : E2 Bandwidth Leased Line from Thimphu to Paro and Phuentsholing

Sir,

In-line with MoU signed between BBSC and BT and subsequent approval of special priced leased lines (E2 i.e. 8 Mbps) by the BT Board of Directors in the 24th Board Meeting, I am pleased to offer you the following special price (exclusive to BBSC only):

<u>S/No.</u>	<u>Particulars</u>	<u>Monthly Rate</u> <u>(Nu.)</u>
1	Price per E2 (Thimphu-Chumdo) – 25.34 KM	11,000.00
2	Price per E2 (Chumdo-Paro) – 24.46 KM	10,620.00
3	Price per E2 (Chumdo-Phuentsholing) – 74.65 KM	32,405.00
5	Monthly price for use of Tower at Phuentsholing	1,150.00
6	Monthly price for use of Tower at Paro	1,610.00
	Total	56,785.00
7	Onetime Setup Fee	15,000.00

Besides, BBSC shall also pay monthly instalments of Nu. 24,635.00 towards the cost recovery of MPEG CODEC as agreed in the MoU, until the recovery of the equipment cost.

Therefore, I look forward to start of the services at the earliest and hope you will maintain our special rates confidential. We await your order for the service immediately in line with our MoU and discussions.

Yours Sincerely,


Sangey Tenzing
Managing Director

CC:

1. General Manger, Operations Division, Bhutan Telecom – for information.
2. Manager, Billing & Int'l Affairs Section, Bhutan Telecom – for information and necessary action.
3. Sr. Manager, Finance Division, Bhutan Telecom – for information.

Tel: +975-2-322678 Fax: +975-2-324312
Post Box 134, Thimphu, BHUTAN

収集資料リスト

収集資料リスト

調査名 ブータン王国「国営放送局機能強化計画」予備調査

番号	名称	形態 図書・ビデオ 地図・写真等	オリジナル・コピー	発行機関	発行年
1	BHUTAN INFORMATION, COMMUNICATIONS AND MEDIA ACT (BICMA) 2006	図書	オリジナル		2006
2	Minutes of Meetings Between the Japanese Evaluation Team and Bhutan Broadcasting Service Corporation of The Royal Government of Bhutan on the Japanese Technical Cooperation for the Project on Enhancement of the Bhutan Broadcasting Service	図書	コピー	終了時評価調査団	29/Jan./2007
3	現地調査報告書	図書	コピー	終了時評価調査団	29/Jan./2007
4	Answer for Questionnaire for Bhutan	図書	コピー	BBS	29/Jan./2007
5	National Survey on Radio and Television In Bhutan 2006	図書	コピー	By Renate Ehlers Head of multimedia, Audience Reserch & Strategy Hessischer Rundfunk Germany	2006
6	Fact Sheet (Population and Housing Censur Of Bhutan 2005	図書	コピー	Office of the Census Commissioner Thimphu	2005
7	Editorial Policy and Code of Conduct of The Bhutan Broadcasting Service Corporation (BBS)	図書	コピー	BBS	30/Jan./2007
8	Ninth Plan Document (2003-07)	図書	コピー	BBS	2003

番号	名称	形態 図書・ビデオ 地図・写真等	デジタル・コピー	発行機関	発行年
9	BBS Organization Chart	図書	コピー	BBS (終了時評価調査団より)	27/June/2006
10	HRD Master Plan 2005-2010	図書	コピー	BBS (終了時評価調査団より)	2005
11	Bhutan Broadcasting Service (Presentation) Present	図書	コピー	BBS	30/Jan./2007
12	Strengthening of BBS Program Production Capacity and improving local content and Participation from rural areas...(1)	図書	コピー	BBS	30/Jan./2007
13	Balance Sheet as at 31 st DEC. 2005	図書	コピー	BBS	31/Jan./2007
14	Budget Form III Budget Presentation Scheme In Details 2007-2008	図書	コピー	BBS	31/Jan./2007
15	Allocation of Approved Government Budget For Financial Year 2006-2007	図書	コピー	BBS	31/Jan./2007
16	Acquisition of land for construction of BBS Regional Production Studio in Kanglang	図書	コピー	BBS	9/Oct./2006
17	Regional Bureau of BBSC	図書	コピー	Office of the Census Commissioner, Royal Government of Bhutan UNFPA	2005
18	Population and Housing Census of Bhutan 2005	図書	コピー	BBS	30/Jan./2007
19	BBSC ORGAN (BBS ODA 07_02_02 (BBS関係資料) に収録)	電子ファイル (CD-ROM)	コピー	BBS	02/Feb./2007
20	budget breakup_0607 (BBS ODA 07_02_02 (BBS関係資料) に収録)	電子ファイル (CD-ROM)	コピー	BBS	02/Feb./2007
21	BUREAU EXPENSES 2006 (BBS ODA 07_02_02 (BBS関係資料) に収録)	電子ファイル (CD-ROM)	コピー	BBS	02/Feb./2007

番号	名称	形態 図書・ビデオ 地図・写真等	デジタル・コピー	発行機関	発行年
22	current state of BBS (BBS ODA 07_02_02 (BBS関係資料) (ニ)収録)	電子ファイル (CD-ROM)	コピー	BBS	02/Feb./2007
23	DETAILS OF STAFF WHO HAVE SUBMITTED 2006 (BBS ODA 07_02_02 (BBS関係資料) (ニ)収録)	電子ファイル (CD-ROM)	コピー	BBS	02/Feb./2007
24	FM Radio transmitting stations (BBS ODA 07_02_02 (BBS関係資料) (ニ)収録)	電子ファイル (CD-ROM)	コピー	BBS	02/Feb./2007
25	Kanglung Regional Bureau (BBS ODA 07_02_02 (BBS関係資料) (ニ)収録)	電子ファイル (CD-ROM)	コピー	BBS	02/Feb./2007
26	Maintenance Fee . 2007-08 (BBS ODA 07_02_02 (BBS関係資料) (ニ)収録)	電子ファイル (CD-ROM)	コピー	BBS	02/Feb./2007
27	Population coverage (BBS ODA 07_02_02 (BBS関係資料) (ニ)収録)	電子ファイル (CD-ROM)	コピー	BBS	02/Feb./2007
28	Presentation to ODA (BBS ODA 07_02_02 (BBS関係資料) (ニ)収録)	電子ファイル (CD-ROM)	コピー	BBS	02/Feb./2007
29	Answer for question (BBS ODA 07_02_02 (BBS関係資料) (ニ)収録)	電子ファイル (CD-ROM)	コピー	BBS	02/Feb./2007
30	REGIONAL BUREAU OF BBSC (BBS ODA 07_02_02 (BBS関係資料) (ニ)収録)	電子ファイル (CD-ROM)	コピー	BBS	02/Feb./2007
31	Studio Budget 2007-08 (BBS ODA 07_02_02 (BBS関係資料) (ニ)収録)	電子ファイル (CD-ROM)	コピー	BBS	02/Feb./2007
32	Trx budget 2006-07 (BBS ODA 07_02_02 (BBS関係資料) (ニ)収録)	電子ファイル (CD-ROM)	コピー	BBS	02/Feb./2007
33	List Eq. 070119 (1-1) A (JICA技術協力による供与機材リスト) (ニ)収録)	電子ファイル (CD-ROM)	コピー	BBS	07/Feb./2007
34	List Eq. 070119 (1-2) A (JICA技術協力による供与機材リスト) (ニ)収録)	電子ファイル (CD-ROM)	コピー	BBS	07/Feb./2007
35	新TVセンター平面図2枚	図書	コピー	BBS	07/Feb./2007

番号	名称	形態 図書・ビデオ 地図・写真等	オリジナル・コピー	発行機関	発行年
36	テレコム回線リース料金表	図書	コピー	BT	07/Feb./2007
37	新TVセンター平面図3枚	図書	コピー	BBS	08/Feb./2007
38	NEW TV PROGRAMME SCHEDULE FROM SEPTEMBER 2006 (MORNING)	図書	コピー	BBS	09/Feb./2007
39	NEW TV PROGRAMME SCHEDULE FROM SEPTEMBER 2006 (AFTERNOON)	図書	コピー	BBS	09/Feb./2007
40	NEW TV PROGRAMME SCHEDULE FROM JANUARY 29 TH 2007 (EVENING)	図書	コピー	BBS	09/Feb./2007
41	2003～2006収支表	図書	コピー	BBS	12/Feb./2007
42	BBS_TV Centre (新テレビセンター—資料07_02_12)に収録)	電子ファイル (CD-ROM)	コピー	BBS	12/Feb./2007
43	Master Schematic (新テレビセンター—資料07_02_12)に収録)	電子ファイル (CD-ROM)	コピー	BBS	12/Feb./2007
44	NRCS & Automation_Amended_05022007 (新テレビセンター—資料07_02_12)に収録)	電子ファイル (CD-ROM)	コピー	BBS	12/Feb./2007
45	Studios_amended_05022007 (新テレビセンター—資料07_02_12)に収録)	電子ファイル (CD-ROM)	コピー	BBS	12/Feb./2007
46	System Schematics (新テレビセンター—資料07_02_12)に収録)	電子ファイル (CD-ROM)	コピー	BBS	12/Feb./2007
47	Main_Sche_Ann3 (新テレビセンター—資料07_02_12)に収録)	電子ファイル (CD-ROM)	コピー	BBS	12/Feb./2007
48	News_Sche_Ann4 (新テレビセンター—資料07_02_12)に収録)	電子ファイル (CD-ROM)	コピー	BBS	12/Feb./2007
49	放送機材取扱デ—ラ—(現地業者)—覧表	図書	コピー	JICA/Bhutan事務所	12/Feb./2007
50	COMPANY PROFILE SUMMARY	図書	オリジナル	GELCHEN ENTERPRISE	12/Feb./2007
51	COMPANY PROFILE	図書	オリジナル	Tshomo Geo-Tech Enterprise	12/Feb./2007

番号	名称	形態 図書・ビデオ 地図・写真等	デジタル・コピー	発行機関	発行年
52	Audience Survey	電子ファイル	コピー	BBS	2006
53	国勢調査	電子ファイル	コピー	BBS	2005
54	RE(Rural Electrification) Master Plan	電子ファイル (CD-ROM)	コピー	Ministry of Trade & Industry Department of Energy	Oct/2005
55	State of electrification as of May 2005 (ブータン電化率)	電子ファイル (CD-ROM)	コピー	Ministry of Trade & Industry Department of Energy	May/2005
56	ブータンテレコム・マイクロ回線網	電子ファイル (CD-ROM)	コピー	Bhutan Telecom	21/Feb/2007
57	National Fiber Optic. Network	電子ファイル (CD-ROM)	コピー	Bhutan Telecom (BBSより受領)	02/Feb/2007
58	ブータン王国・世帯調査結果 (Inquiry survey of inhabitants on television diffusion in Bhutan for the preliminary study to expand terrestrial television service area.	図書 電子ファイル (CD-ROM)	コピー	Nyima/Yodse Communication Consultants	March/2007
59	サーベイ・データ集	電子ファイル (CD-ROM)	コピー	Nyima/Yodse Communication Consultants	March/2007
60	Business Master Plan 2005-2010	図書	オリジナル	BBS	31/Dec./2005