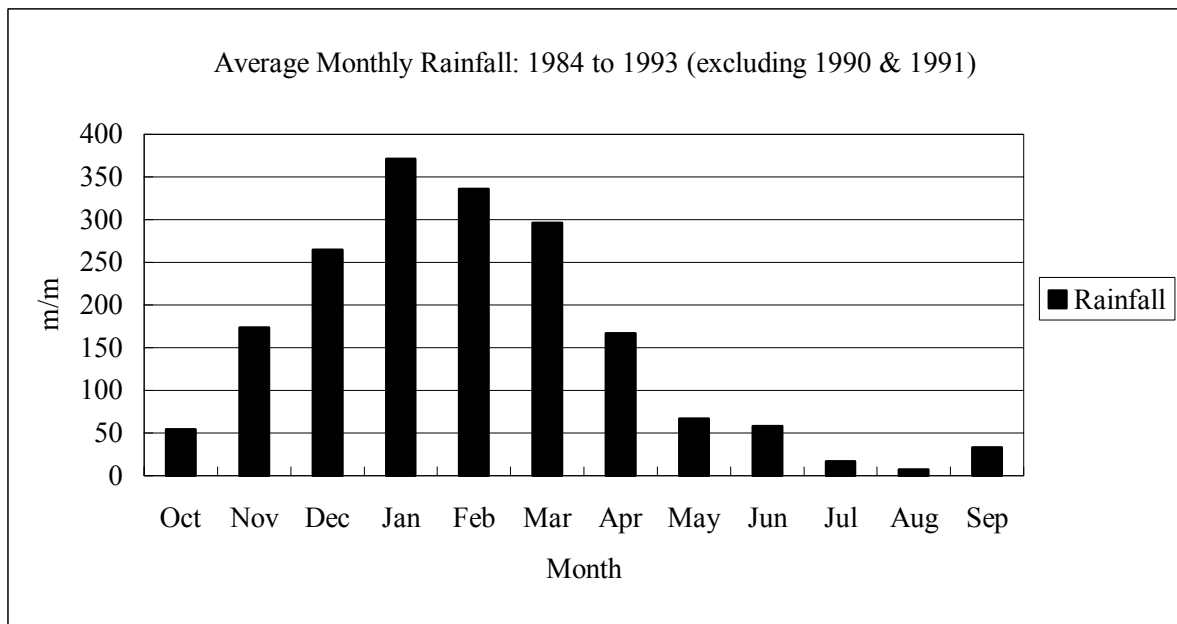


Bagian I Studi Rencana Induk
Gambar-Gambar

Cropping Season	MT I (1st Cropping Season)				MT II (2nd Cropping Season)				MT III (3rd Cropping Season)				Remarks
	Oct.	Nov.	Dec.	Jan.	Feb.	Mar.	April	May	June	July	Aug.	Sep.	
Typical Pattern	Palawija (single or plural)				Beans				Cassava				Palawija: - Maize - Upland Rice - Beans
	(Intensity 100%)				(Intensity depending)								



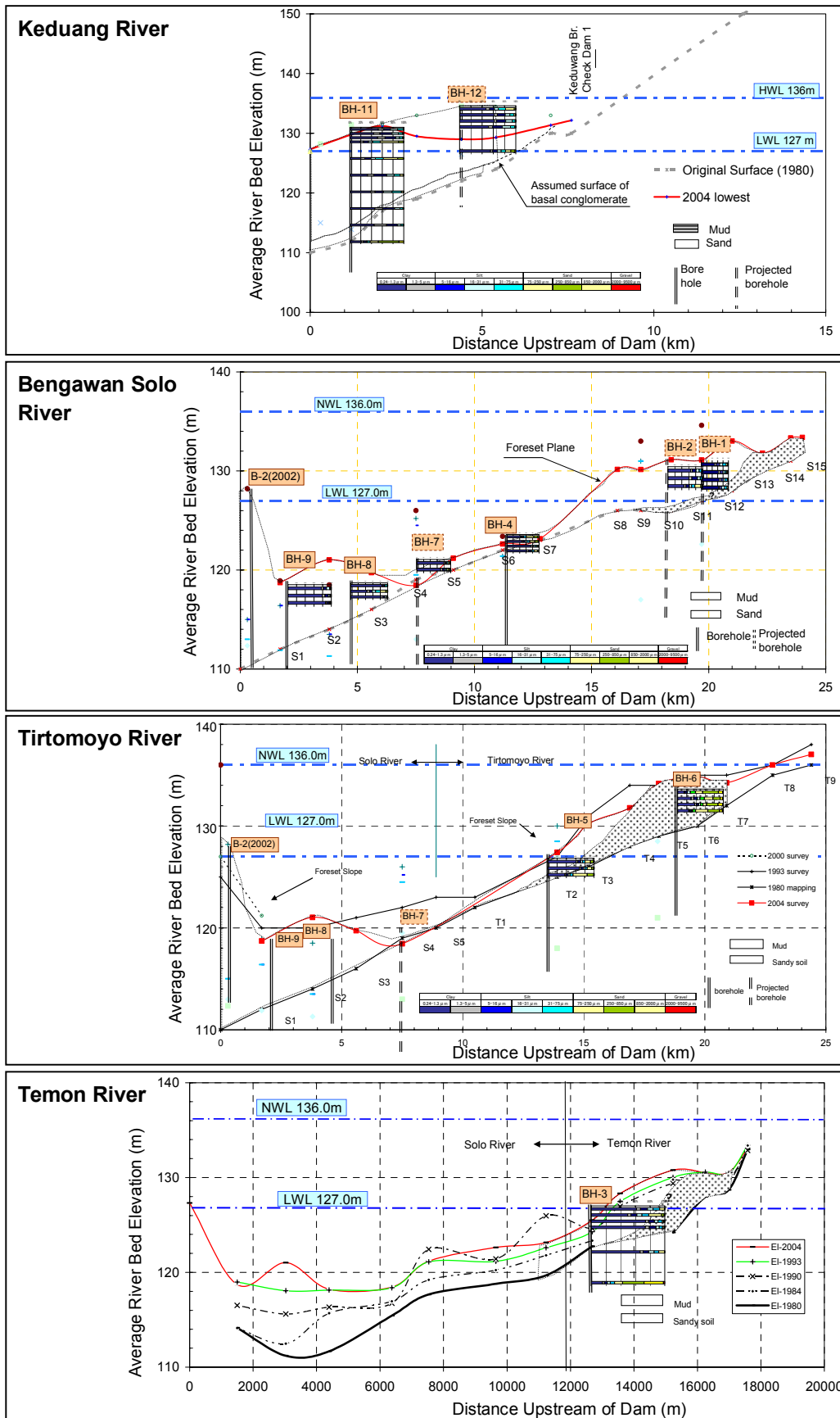
Unit: mm

Year	Oct	Nov	Dec	Jan	Feb	Mar	Apr	May	Jun	Jul	Aug	Sep	Total
1984	61	289	317	358	373	313	231	111	10	24	4	130	1,554
1985	103	139	215	245	303	511	210	55	116	6	13	0	1,459
1986	46	211	108	525	287	282	82	15	143	0	0	33	1,367
1987	0	0	517	613	298	134	98	25	0	0	0	0	1,168
1988	122	303	143	275	451	214	77	133	45	0	0	0	1,195
1989	29	104	219	142	406	217	205	109	69	97	14	31	1,290
1992	74	192	255	321	382	543	125	38	18	9	27	71	1,534
1993	0	150	346	493	189	159	308	49	66	0	3	0	1,267
Avg.	54	174	265	372	336	297	167	67	58	17	8	33	1,354

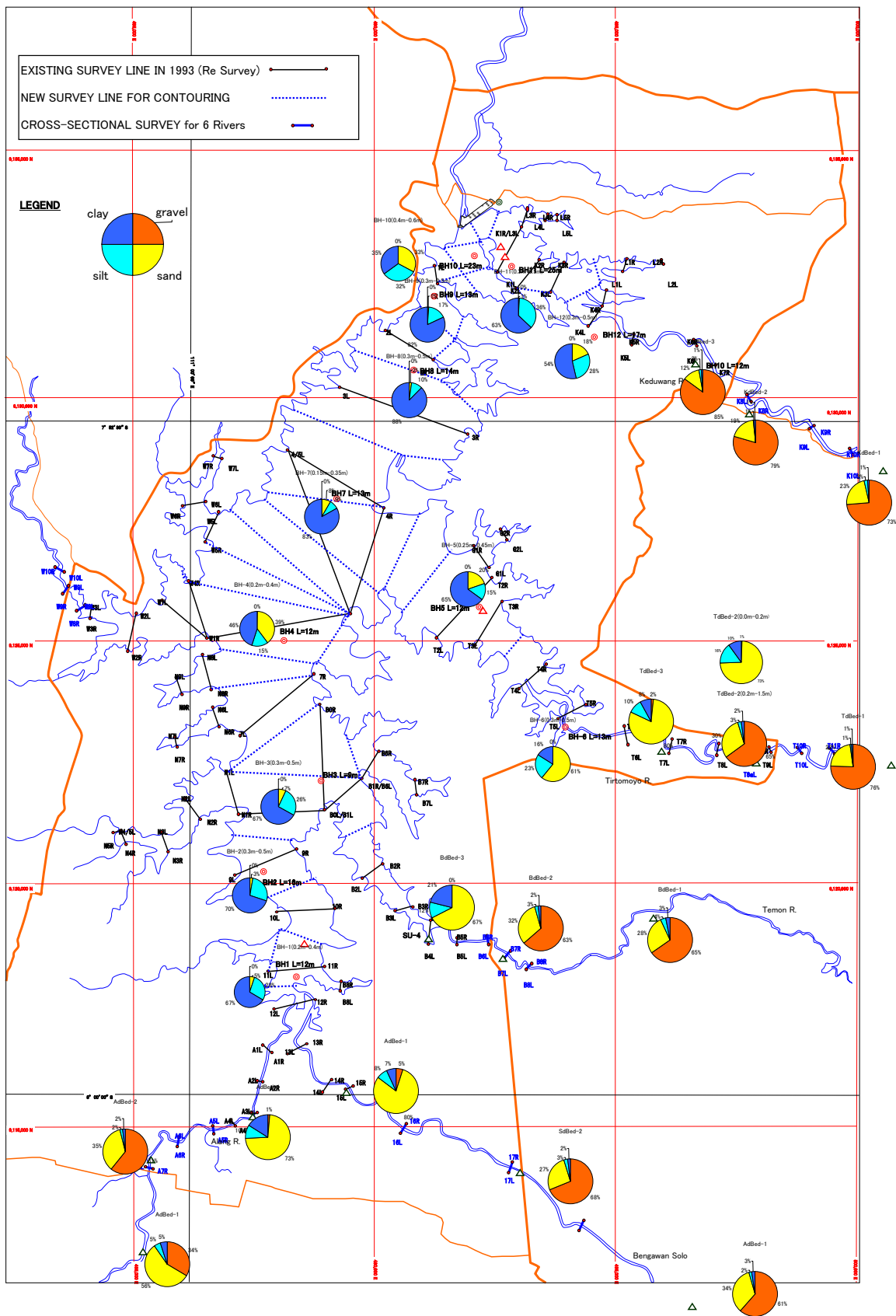
Source: Report on The Evaluation of Wonogiri Watershed Management, Research & Development Project of Solo Watershed Management, 1995

256 Wet month ($\geq 200\text{mm}$) 120 Humid Month ($\geq 100\text{mm} - < 200\text{mm}$) 38 Dry month ($< 100\text{mm}$)

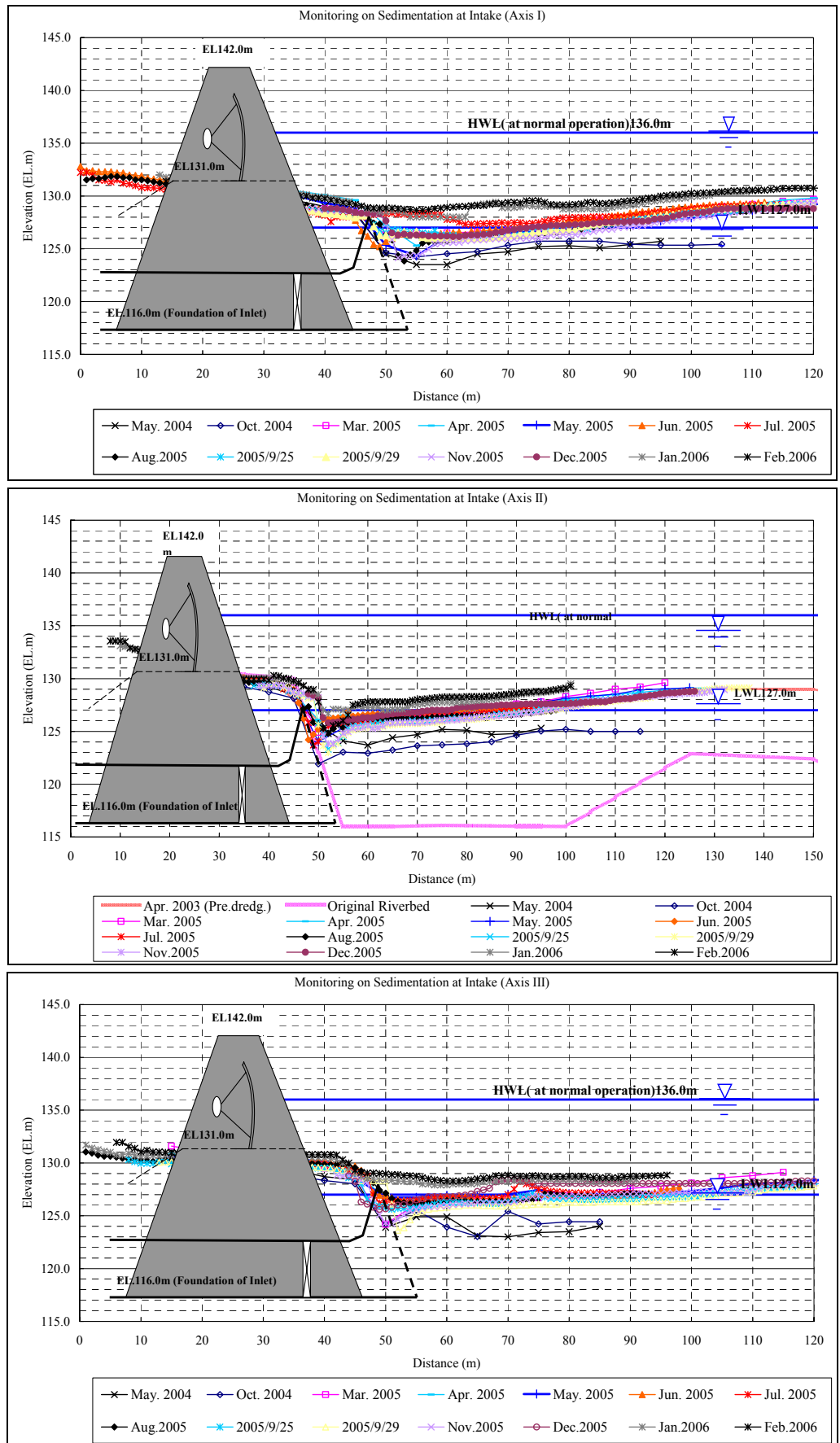
Gambar 2.5.1 Jadwal Umum dan Pola Tanam di DAS Wonogiri



Gambar 3.3.2 Penampang Memanjang Kondisi Geologi Waduk Wonogiri

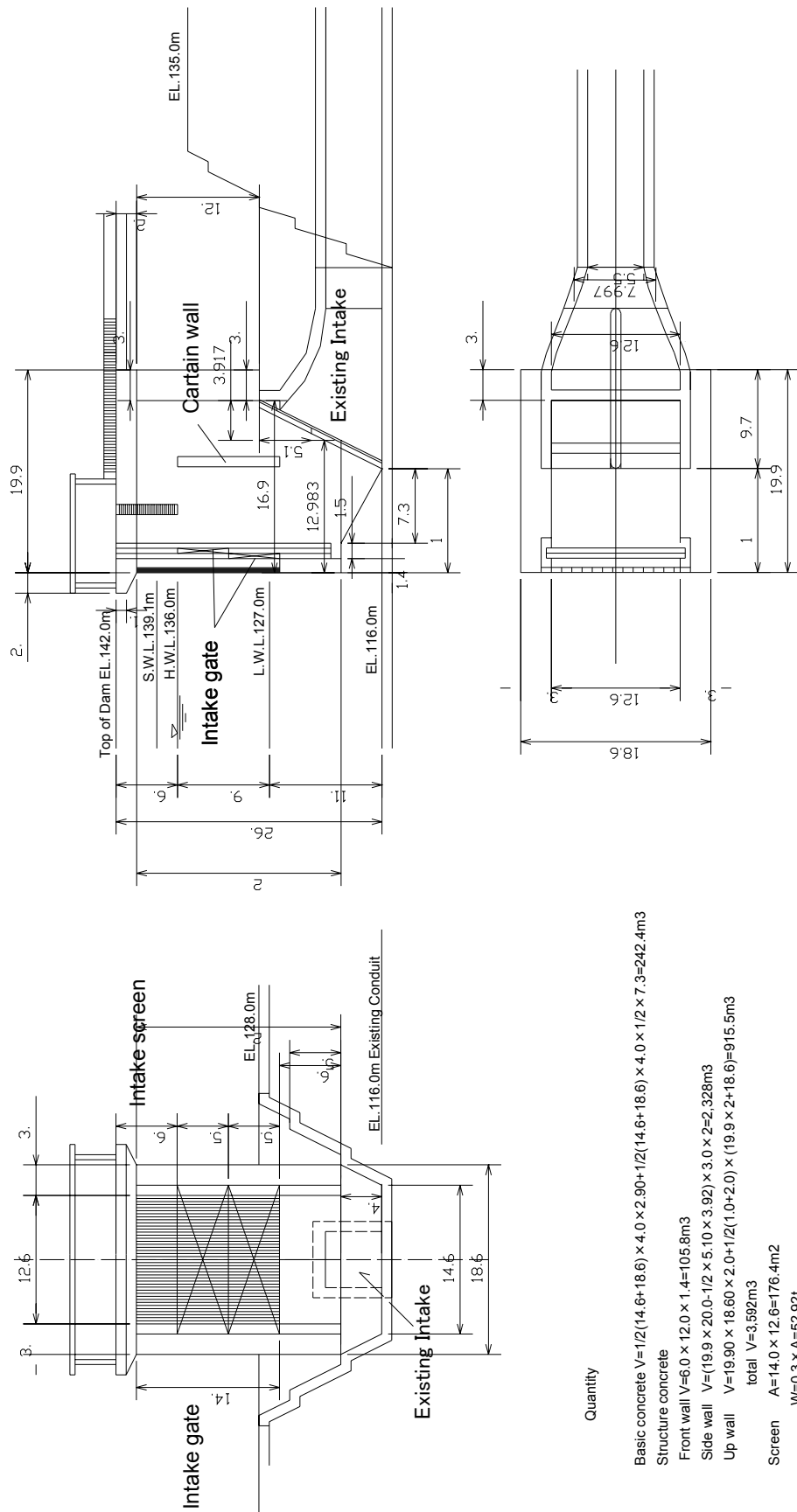


Gambar 3.3.3 Komposisi Material Sedimen Permukaan di Waduk Wonogiri dan 5 Anak Sungai Utama

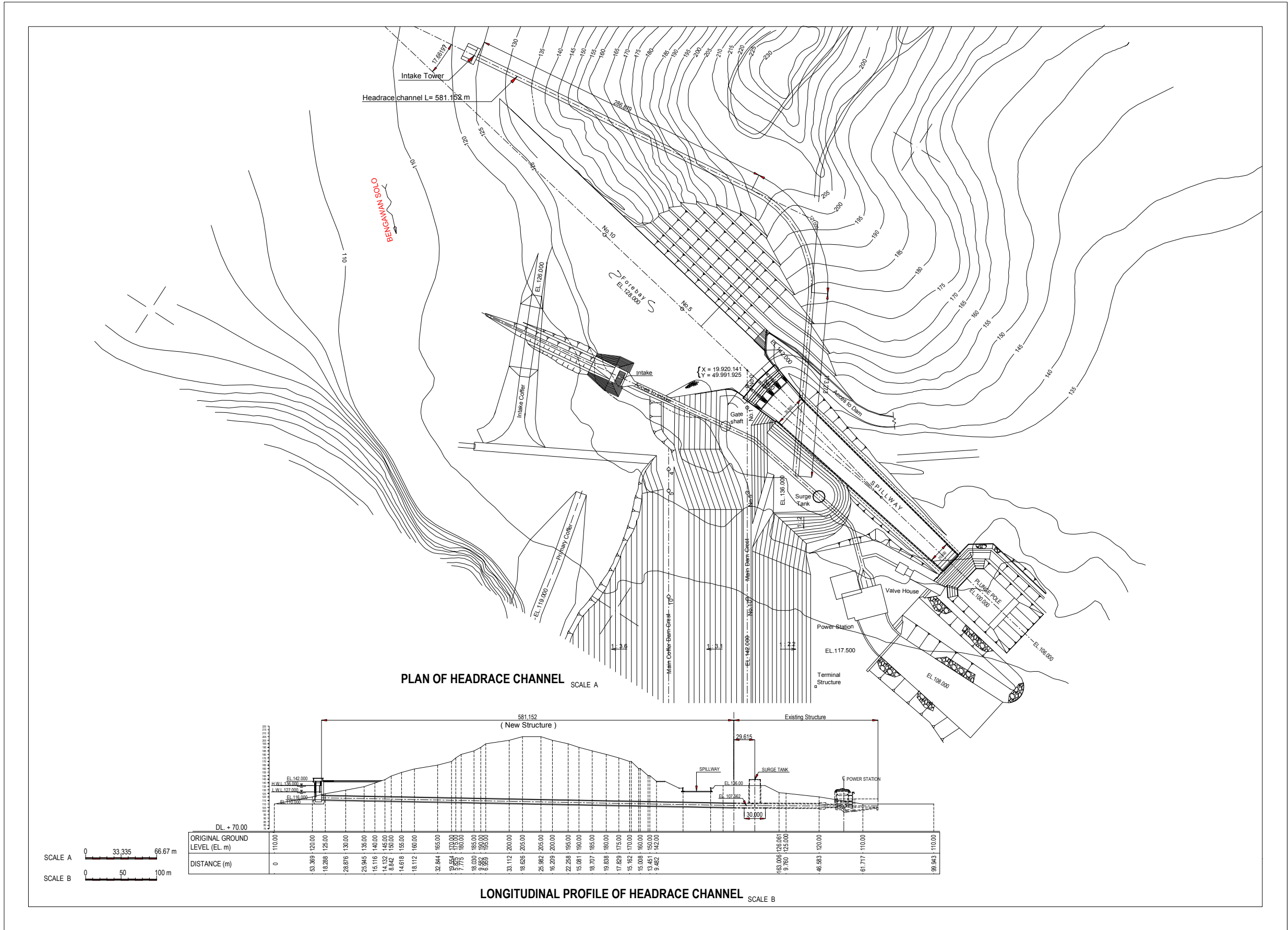


Gambar 3.4.2 Hasil Pemantauan Sedimentasi di Intake

Intake Tower on Existing Intake

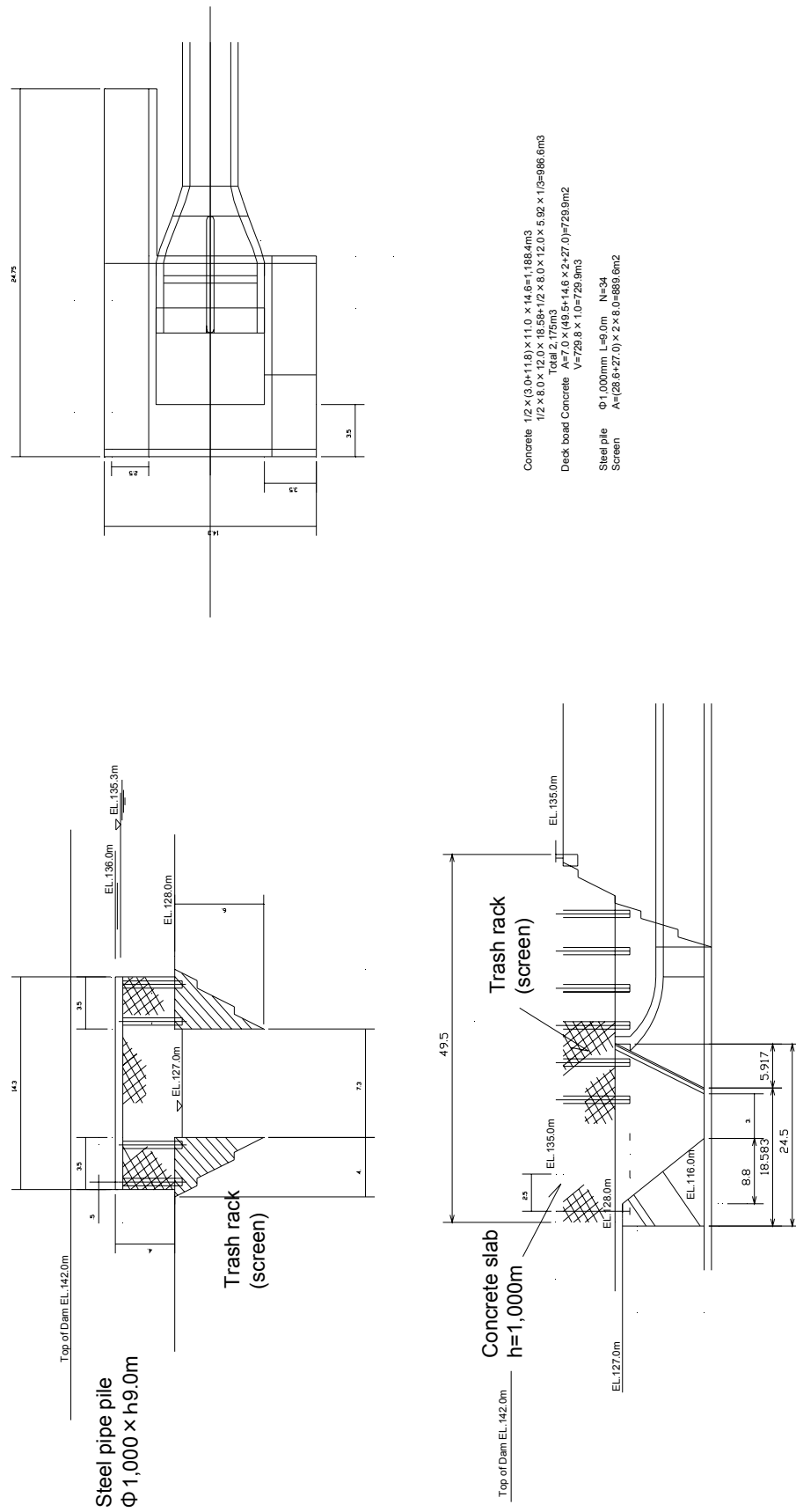


Gambar 8.2.2 Rencana Tata Letak Modifikasi Intake

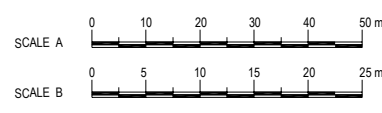
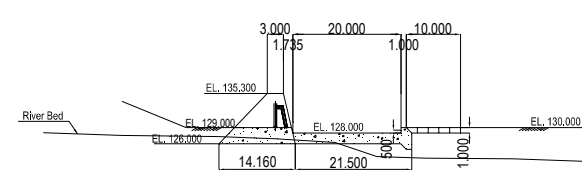
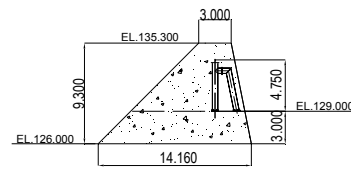
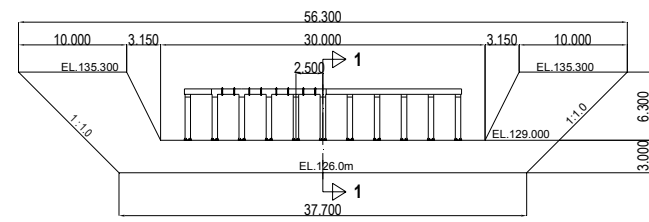
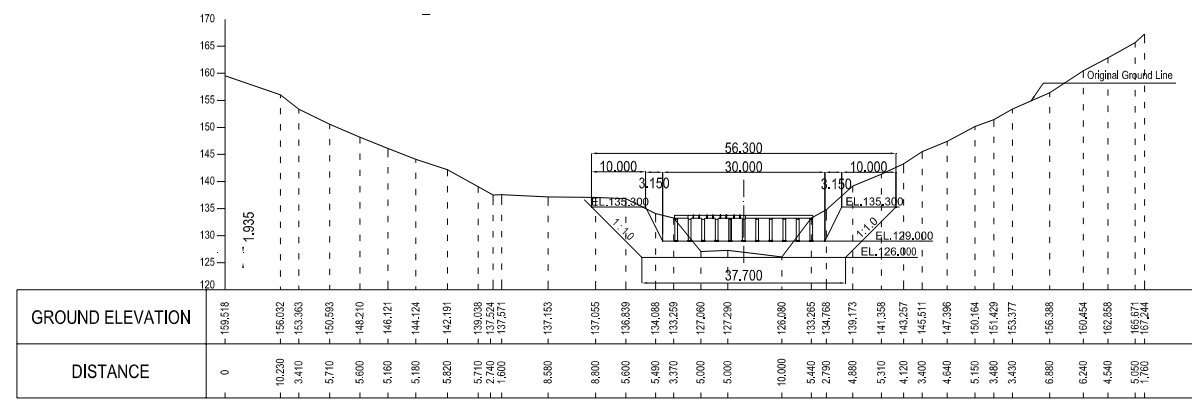
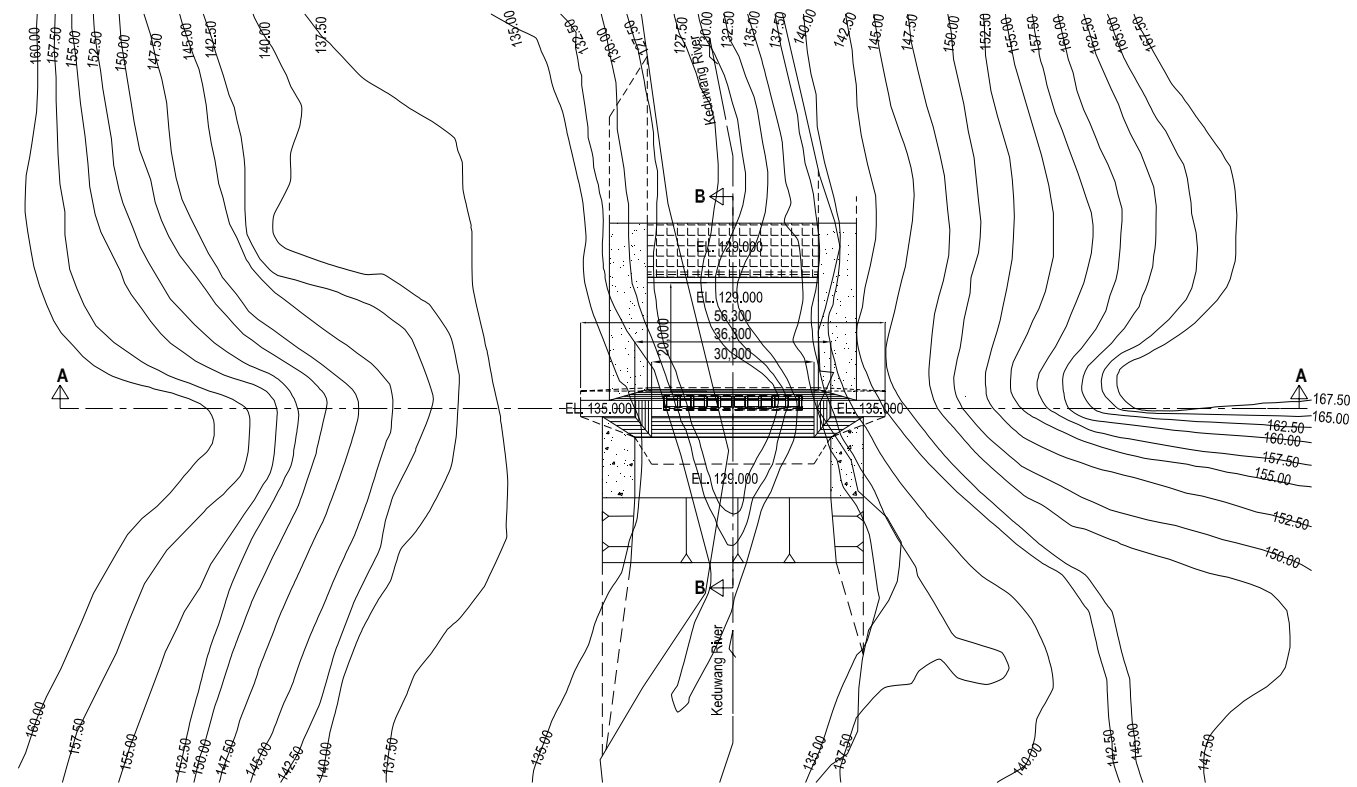
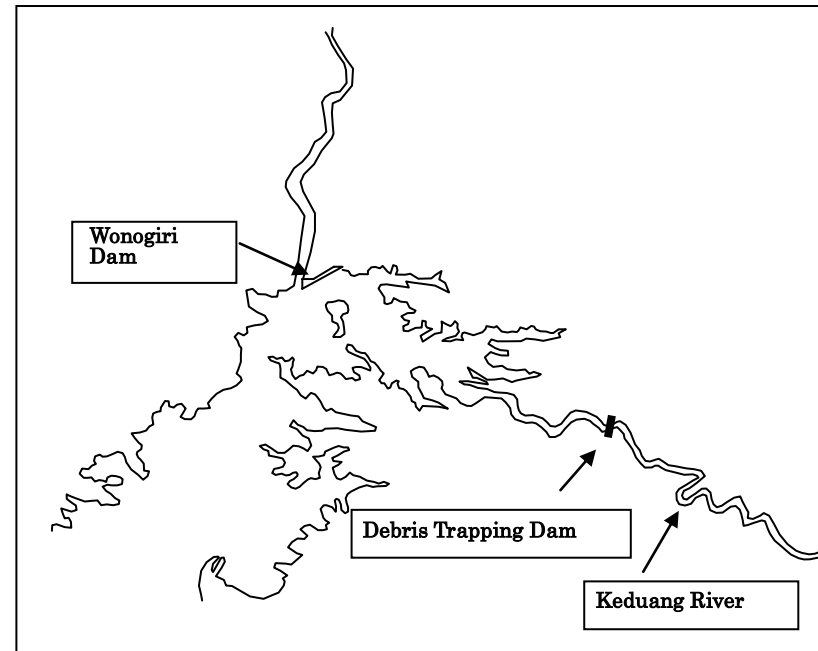


Gambar 8.2.3 Rencana Tata Letak dan Penampang Relokasi Intake

Debris trapping structure at Intake



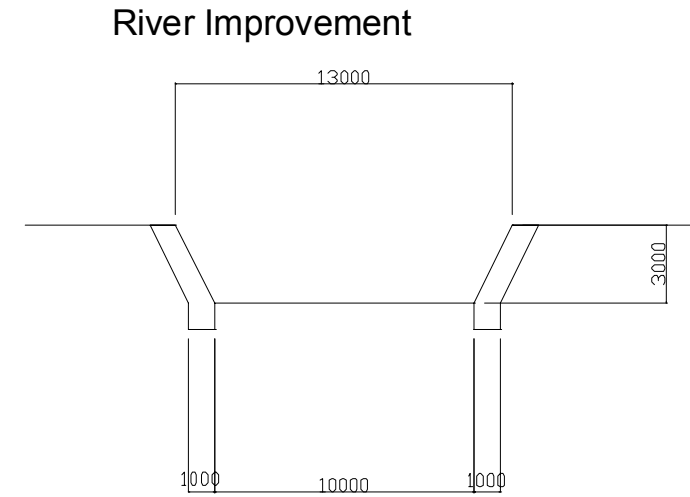
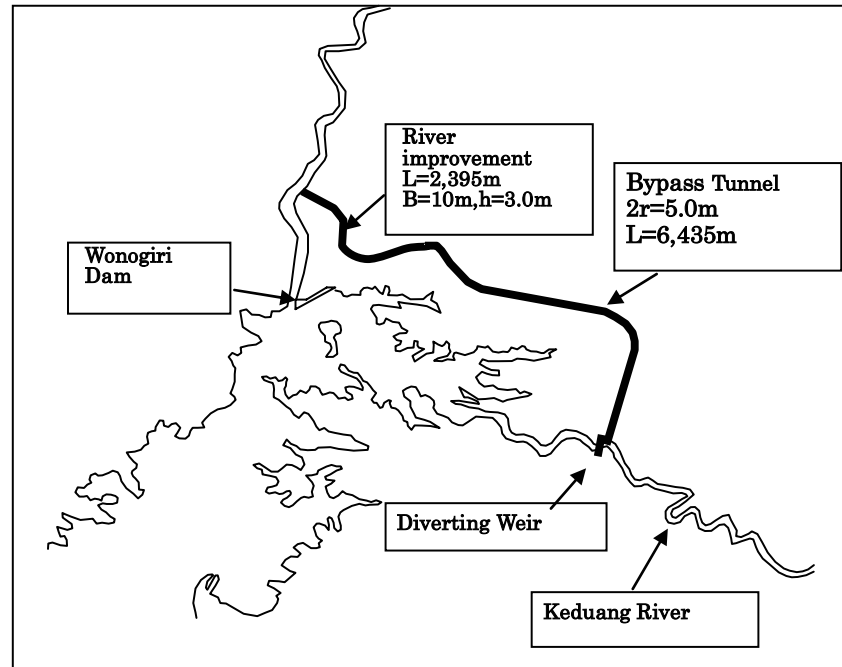
Gambar 8.2.5 Rencana Tata Letak Bangunan Penahan Sampah di Intake



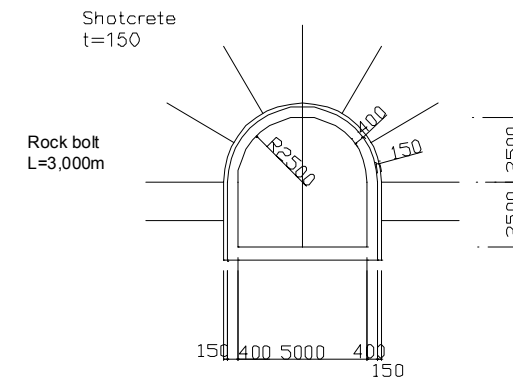
WONOGIRI MULTI PURPOSE DAM DIVERTING WEIR

Gambar 8.2.6 Rencana Tata Letak Umum Bangunan Penahan Sampah di S.Keduang

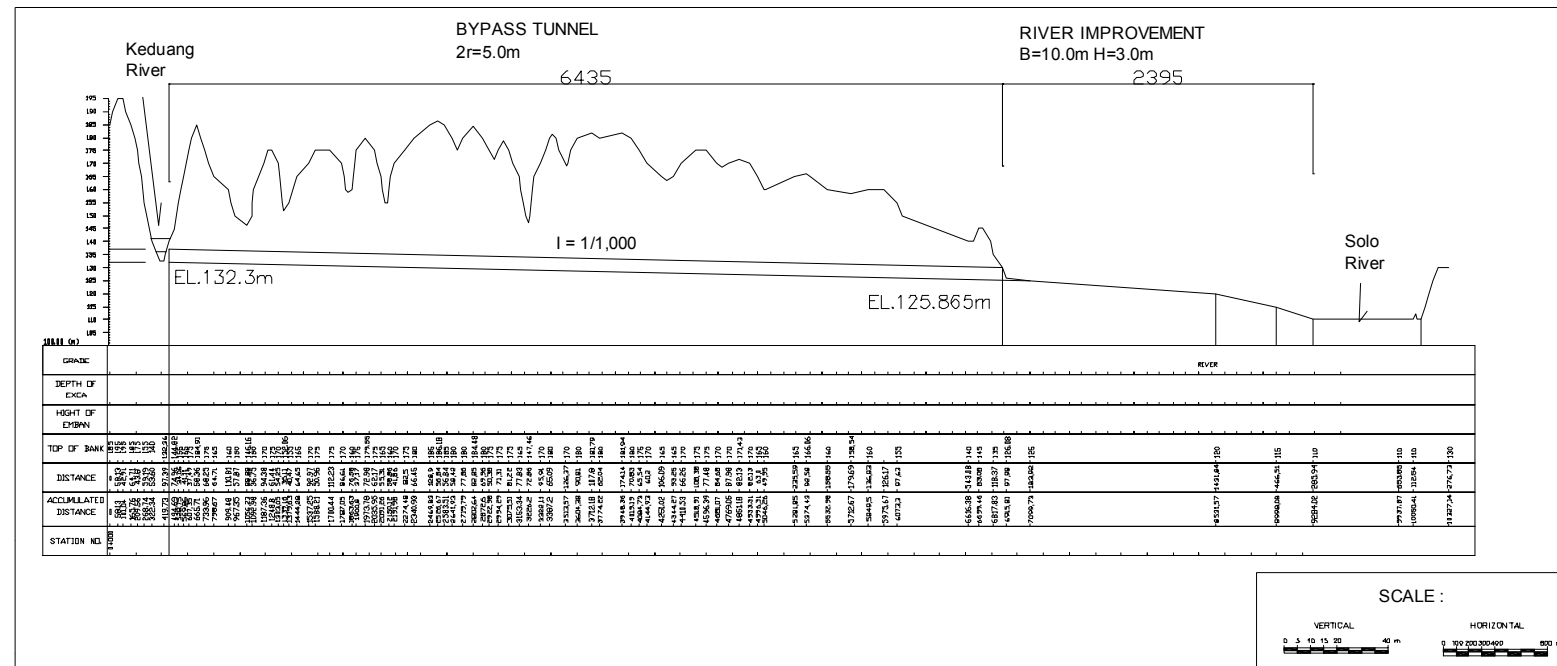
Typical Cross section of Bypass Channel



Diverting Tunnel



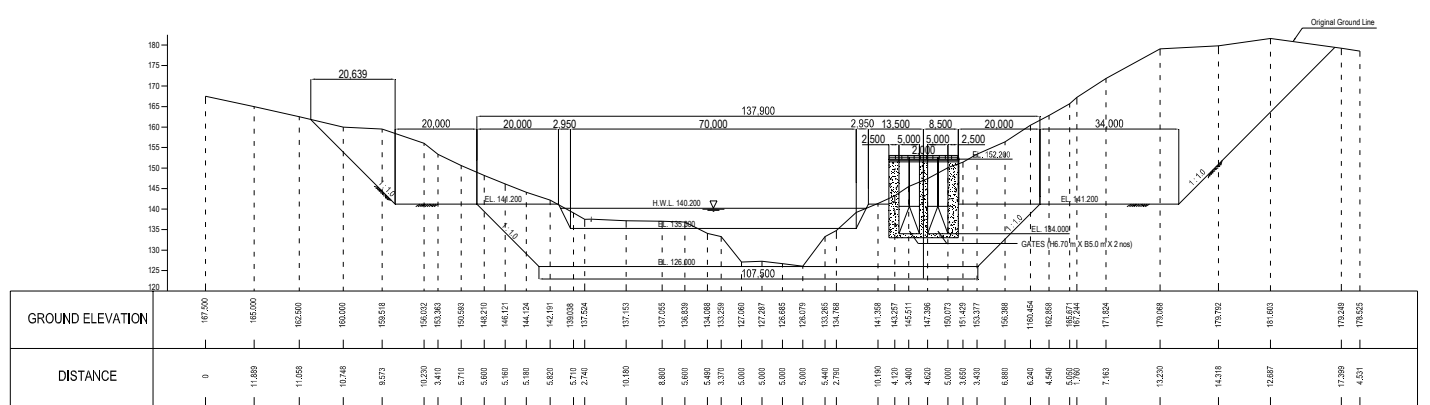
LONGITUDINAL PROFILE

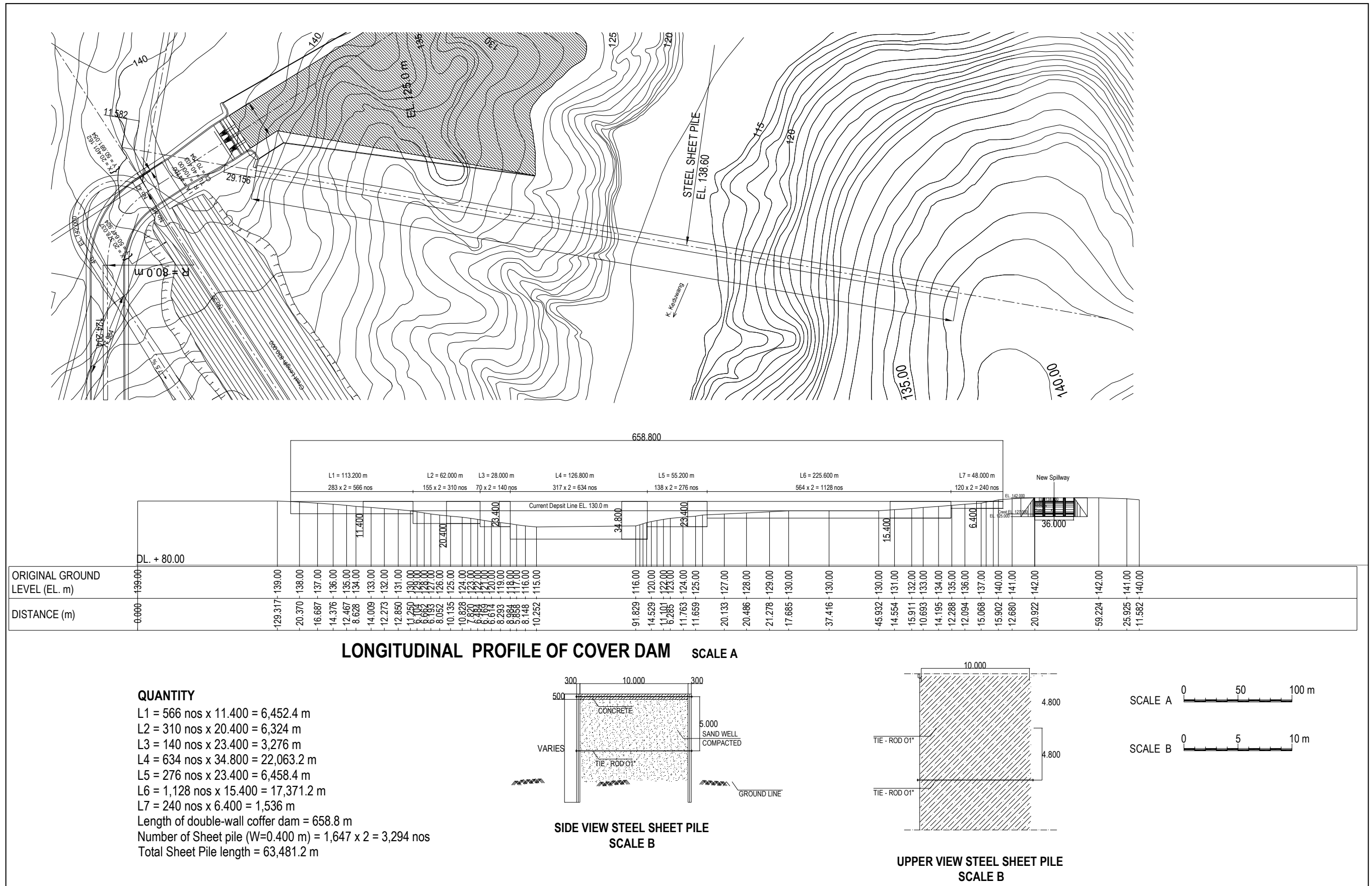


Gambar 8.3.2 Rencana Tataletak Bypass Sedimen di Sungai Keduang (1/2)

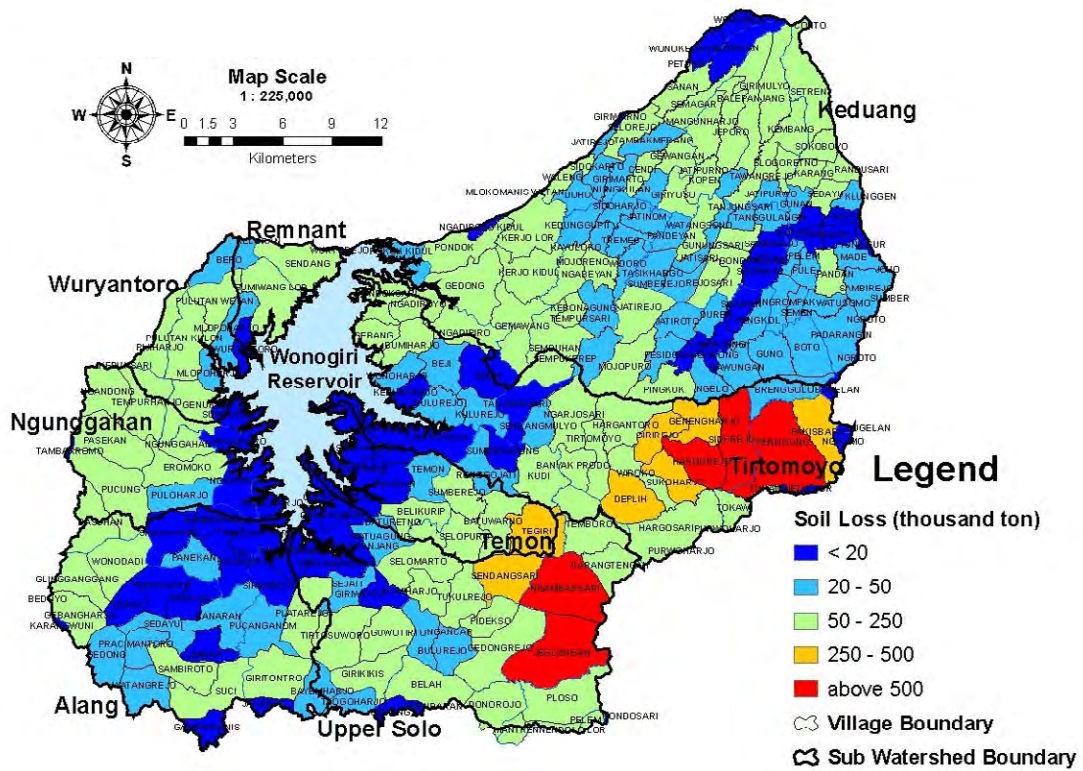


PLAN

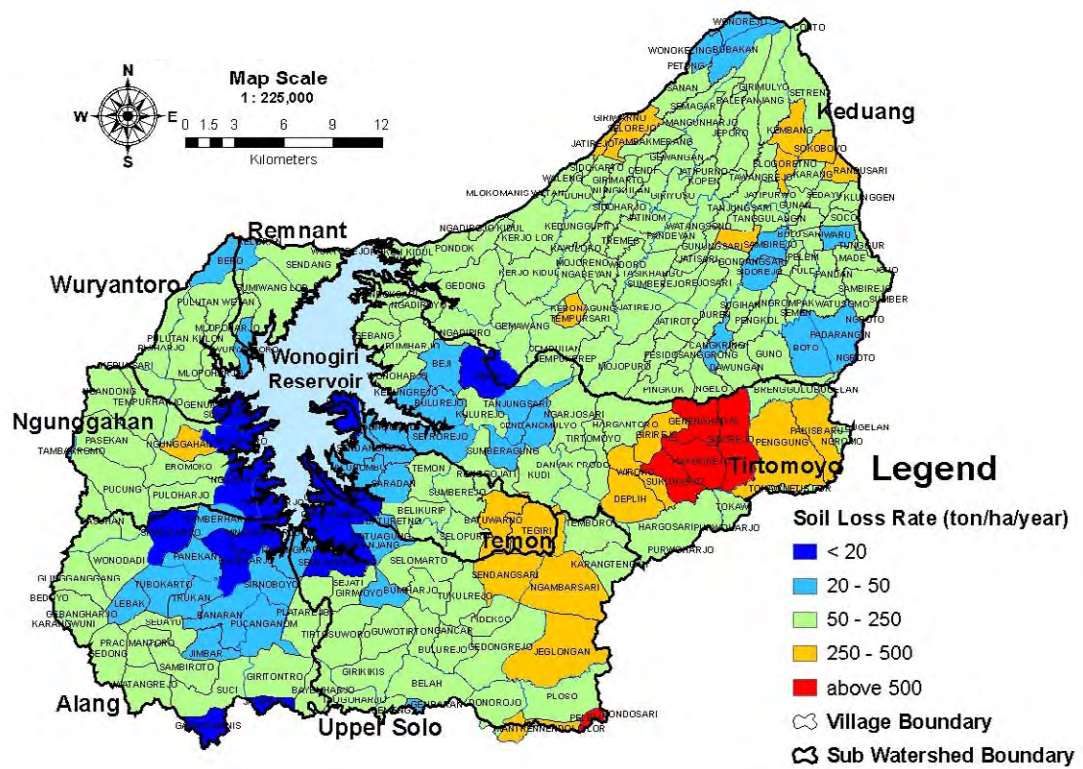




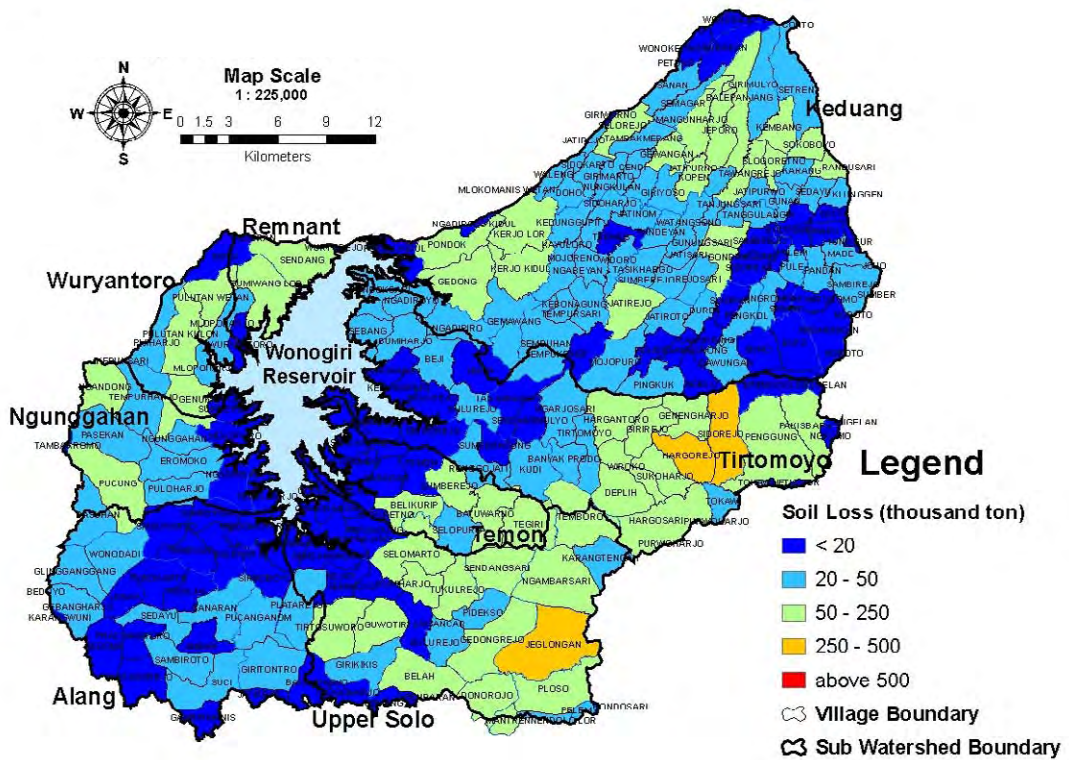
Gambar 8.3.8 Rencana Tataletak Tanggul Penutup



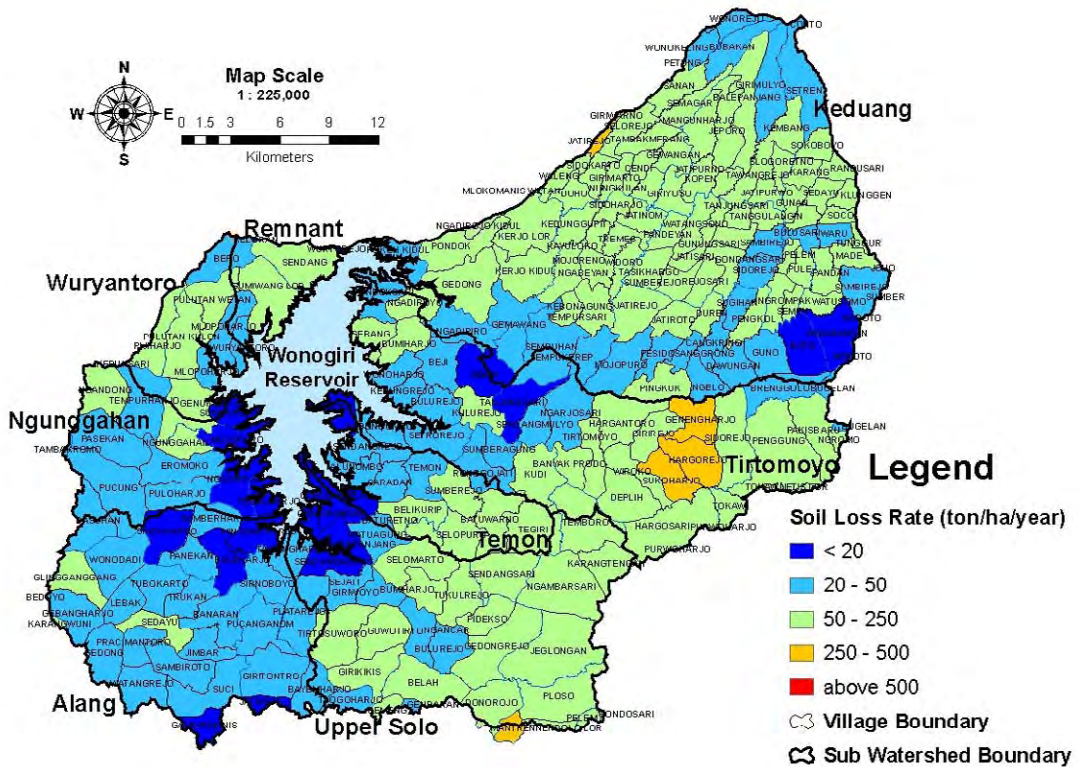
Gambar 9.3.3 Kehilangan Tanah Tahunan Saat Ini di Desa-desanya DAS Wonogiri



Gambar 9.3.4 Kehilangan Tanah Tahunan Per Hektar Saat Ini di Desa-desanya di DAS Wonogiri



Gambar 9.3.5 Kehilangan Tanah Yang Direncanakan (*Future*) di DAS Wonogiri



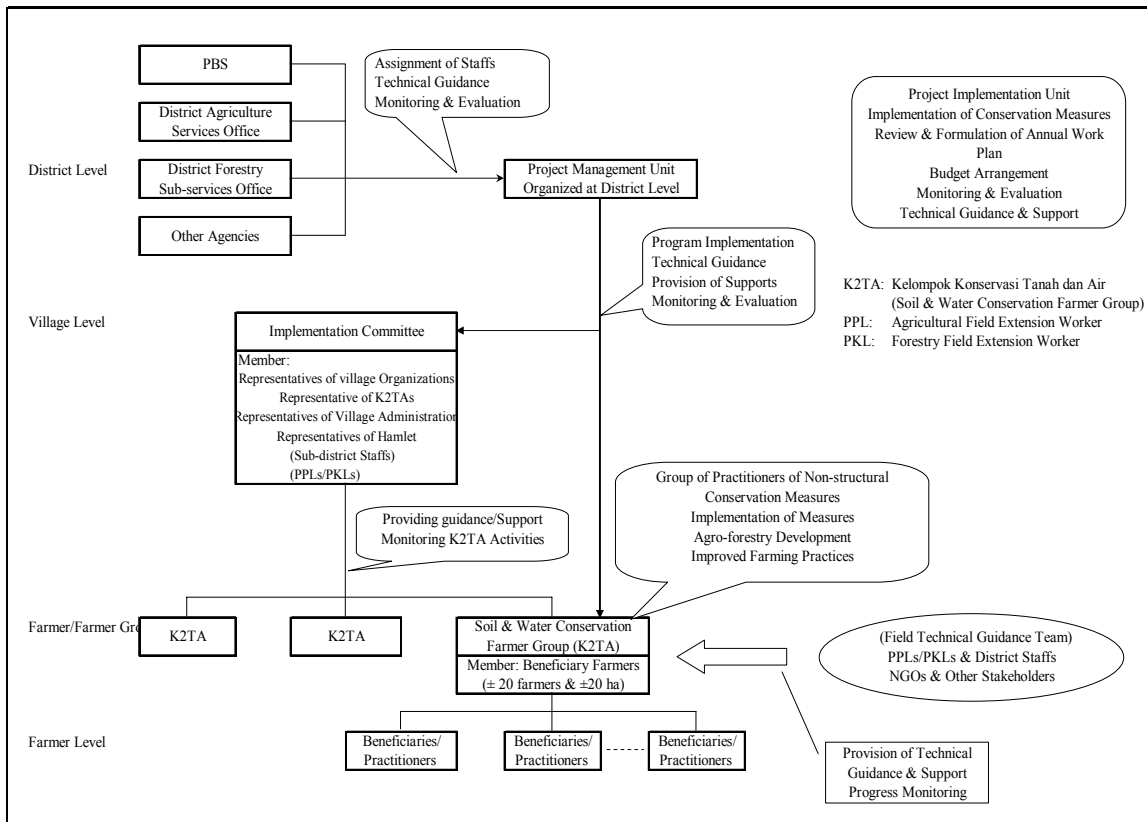
Gambar 9.3.6 Kehilangan Tanah Tahunan Yang Direncanakan (*Future*) Per Hektar di Desa-desa di DAS Wonogiri

Project Activities	1st Year	2nd Year	3rd Year	4th Year	5th	6th & on
	Preparatory Stage			Implementation Stage		
1. Implementation of VA&VAP	---	---	---			
- Village Assessment and Village Action Plan	---					
- Formulation of Implementation Committee	---					
- Support for Implementation Committee	---					
2 Farmer Group (K2TA) Formation Program	---					
- Mass Guidance/Socialization/Workshop	---					
- Support for Formation of K2TA	---					
3 Farmer Group Empowerment Program		---	---			
- Key Farmer Training		---	---			
- Demonstration Activities by Key Farmers		---	---			
- Mass Guidance on Conservation Measures				
- Need Inventory on Agro-forestry etc.		---	---			
4 Terrace Formation Guidance Program			---	---		
5 Agro-forestry Development Program (for 3 years)			---	---	---	
6 Farming Support Program (for 1 cropping season)			---			
7 Field Guidance Program		
8 Agricultural Support Programs		

--- Program schedule
 Continuous activities or activities to be made during the period

Source: JICA Study Team

Gambar 11.5.2 Susunan Implementasi Dasar Penanganan Konservasi DAS



Source: JICA Study Team

Gambar 11.5.3 Usulan Sementara Pembentukan Organisasi di Tingkat Desa dan Lapangan Untuk Implementasi Penanganan Konservasi