

5. Other Relevant Data

Criteria for Site Selection: Excerpts from Preparatory Study Report

1. Sites survived the screening by DARD.
2. No overlap with other afforestation projects being performed by other donors or Vietnam.
3. No overlap with other projects not related afforestation.
4. Necessity for the establishment of coastal protection forests (shifting sand protection and wind protection).
5. Either government owned land or public land.
6. Confirmation of the forest maintenance and management setup of the Vietnamese side.
7. No overlap with areas for agroforestry or other purposes.
8. Compatibility with the grant aid scheme.
9. Positive socio-economic effect on the local community through forest establishment.
10. Likelihood of environmental improvement effect by forest establishment.
11. Site located in objective districts.
12. No serious difficulties in establishing access roads.
13. Suitability of geological and soil conditions for planting.
14. Site not in danger of being inundated by waves (sand pit etc.) and where car access is possible without using any boat.
15. Topographical conditions which does not hinder afforestation taking into account following factors.
 - i Sites where the surface gradient is 10° or more.
 - ii Sites of sand spit terrain where afforestation cannot be carried out without using boats.
 - iii Sites where sand fixation walls are required.
 - iv Sites where there is evidence of wave inundation.
 - v Sites which are flooded and stagnated for a long time during the rainy season.
 - vi Sites where construction of access roads to the Site are difficult.
16. Degree of Technical difficulties for afforestation taking into account following factors and order.
 - i Moving sand area
 - ii Wind erosion area
 - iii Areas adjacent to the shoreline
 - iv Frequently flooded area in rainy season
 - v Ordinary sand area
 - vi Poorly growing scattered high tree area
 - vii Old aged forest area
17. Possibility of expansion of the planting area around the Site.

Fig. 4-1 Organization chart of MARD

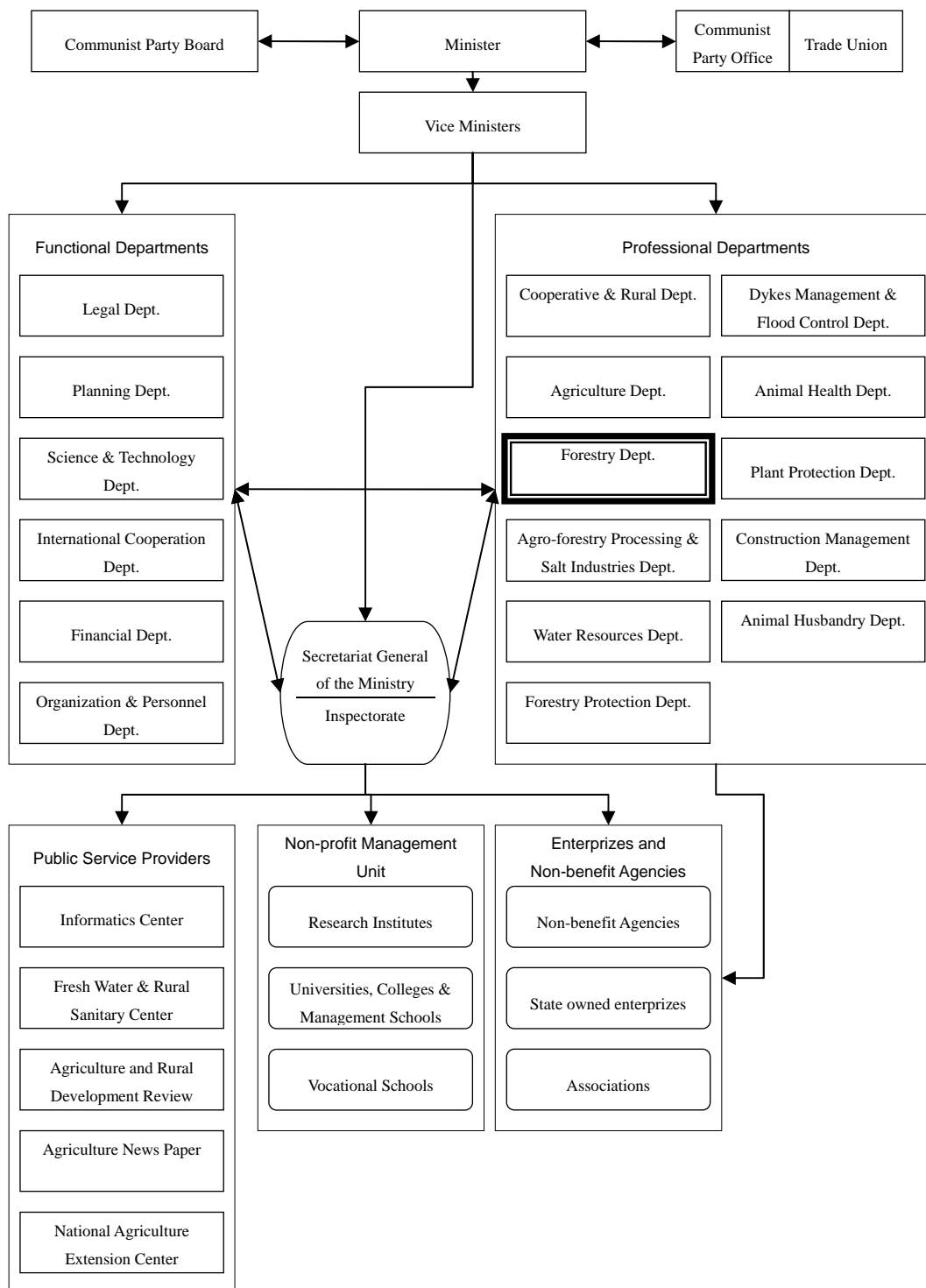


Fig. 4-2 Organization Chart of DARD, Quang Nam Province

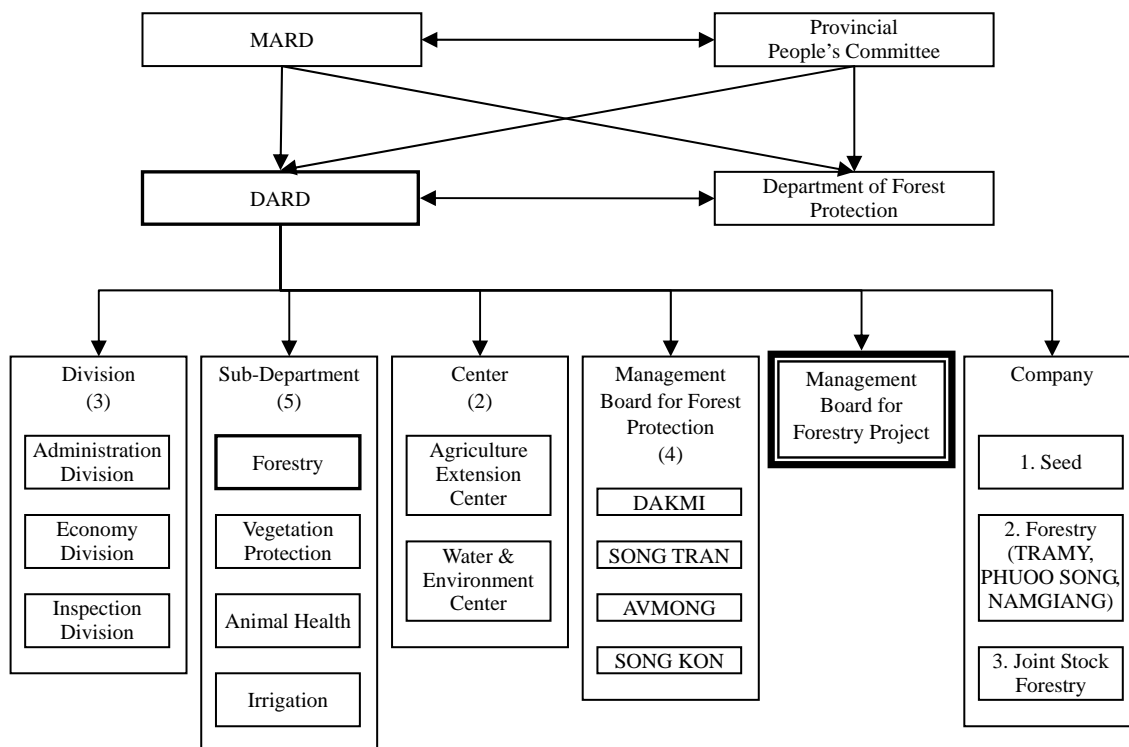


Fig. 4-3 Organization Chart of DARD, Quang Ngai Province

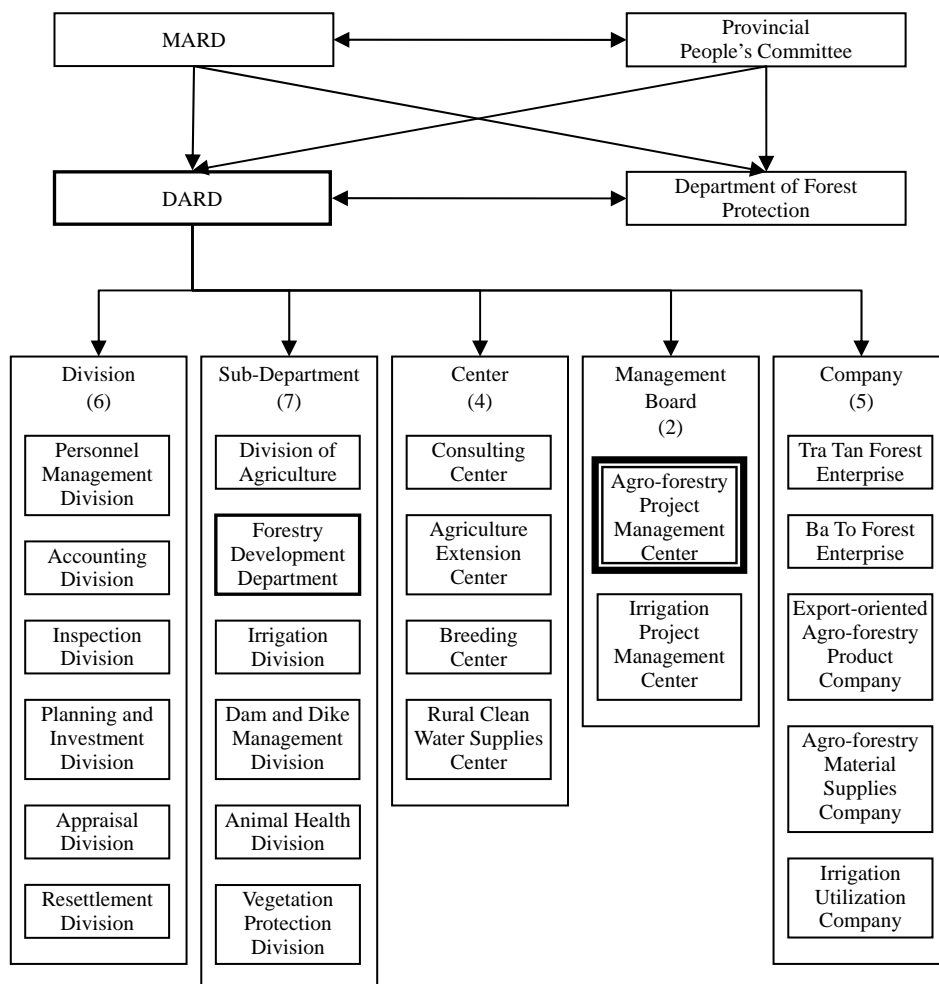
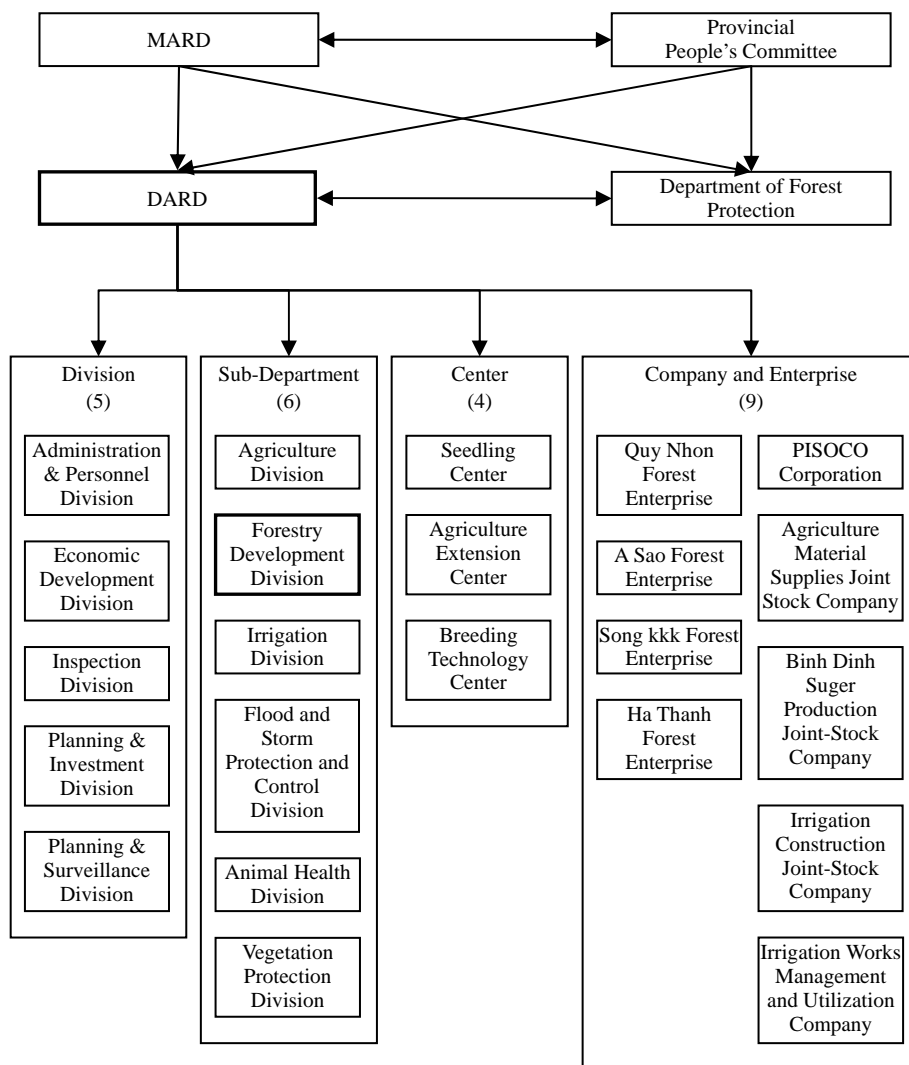


Fig. 4-4 Organization Chart of DARD, Binh Dinh Province

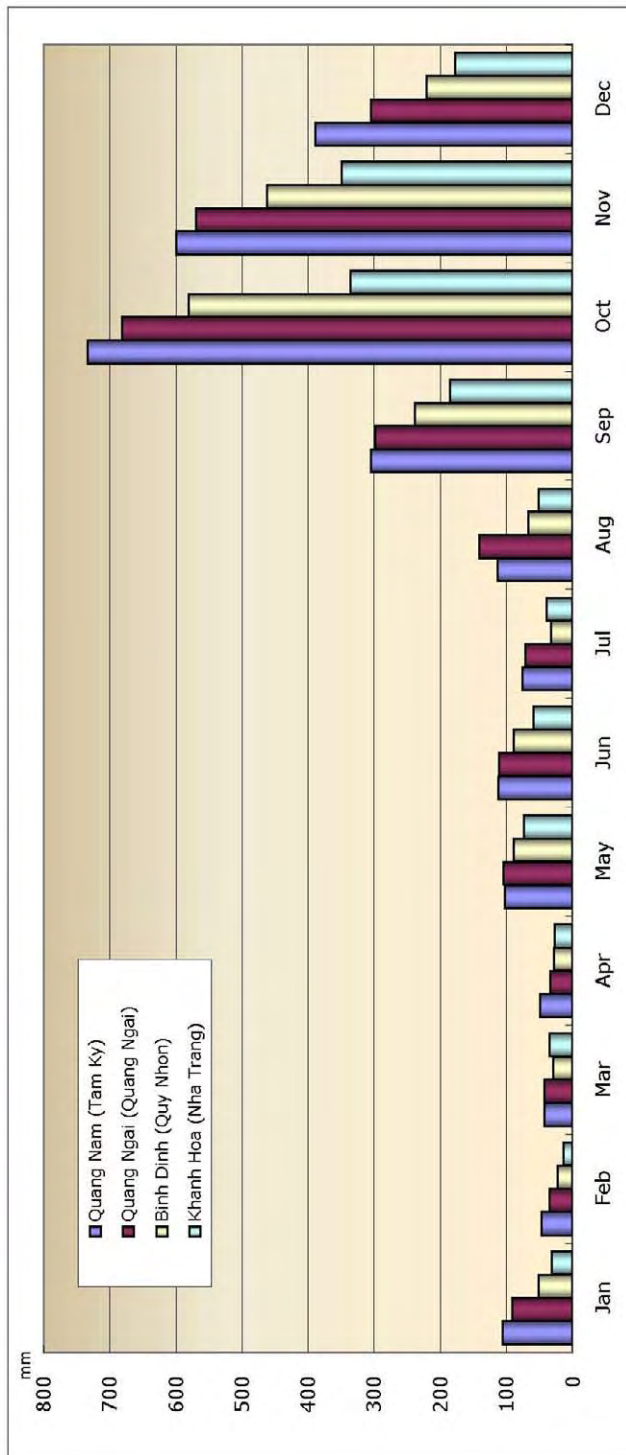


Meteorological Data

Weather Station	Level of Station	Number of Observation (times/day)	Location	Altitude (m)	Height of Anemometer and Anemoscope (m)
Quang Nam (Tam Ky)	level II station	4	Tam Ky Town, Quang Nam Province Lat. 15°34 'N. Long. 108°28 'E.	20.89	12.00
Quang Ngai (Quang Ngai)	level I station	8	Quang Ngai Town, Quang Ngai Province Lat. 15°07 'N. Long. 108°48 'E.	8.07	12.00
Binh Dinh (Quy Nhon)	level I station	8	Quy Nhon City, Binh Dinh Province Lat. 13°46 'N. Long. 109°13 'E.	5.94	12.00
Khanh Hoa (Nha Trang)	level I station	8	Nha Trang City, Khanh Hoa Province Lat. 12°15 'N. Long. 109°12 'E.	2.65	12.00

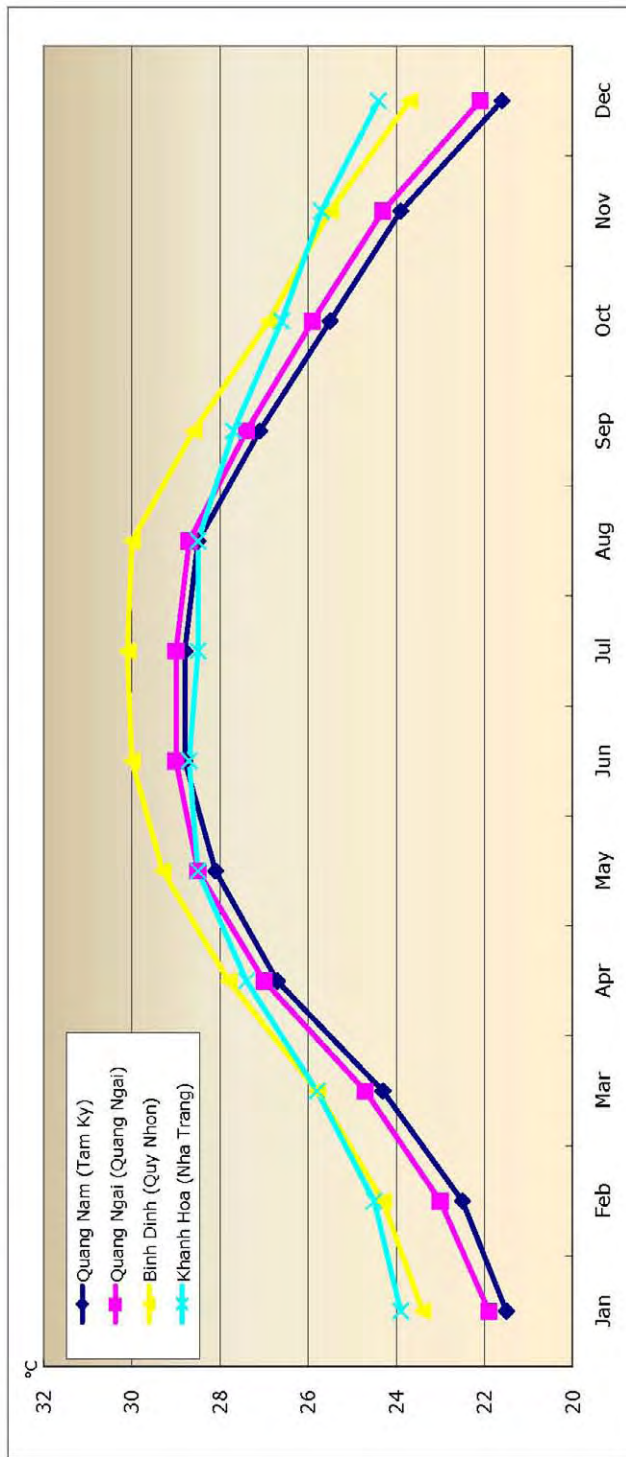
MONTHLY RAINFALL DATA (unit: mm)

W. Station	Jan	Feb	Mar	Apr	May	Jun	Jul	Aug	Sep	Oct	Nov	Dec	total
Quang Nam (Tam Ky)	105.1	47.2	42.0	48.9	102.6	112.1	76.2	113.4	304.9	733.1	600.0	388.8	2,674.3
Quang Ngai (Quang Ngai)	91.5	34.6	42.5	33.8	104.3	111.0	71.2	141.5	298.3	681.2	570.1	304.4	2,484.4
Binh Dinh (Quy Nhon)	51.7	22.3	28.8	27.6	89.5	88.9	32.7	67.3	238.2	581.0	462.5	220.7	1,911.2
Khanh Hoa (Nha Trang)	31.3	13.3	34.7	26.4	73.4	59.2	38.6	51.1	185.7	335.6	348.7	178.1	1,376.1



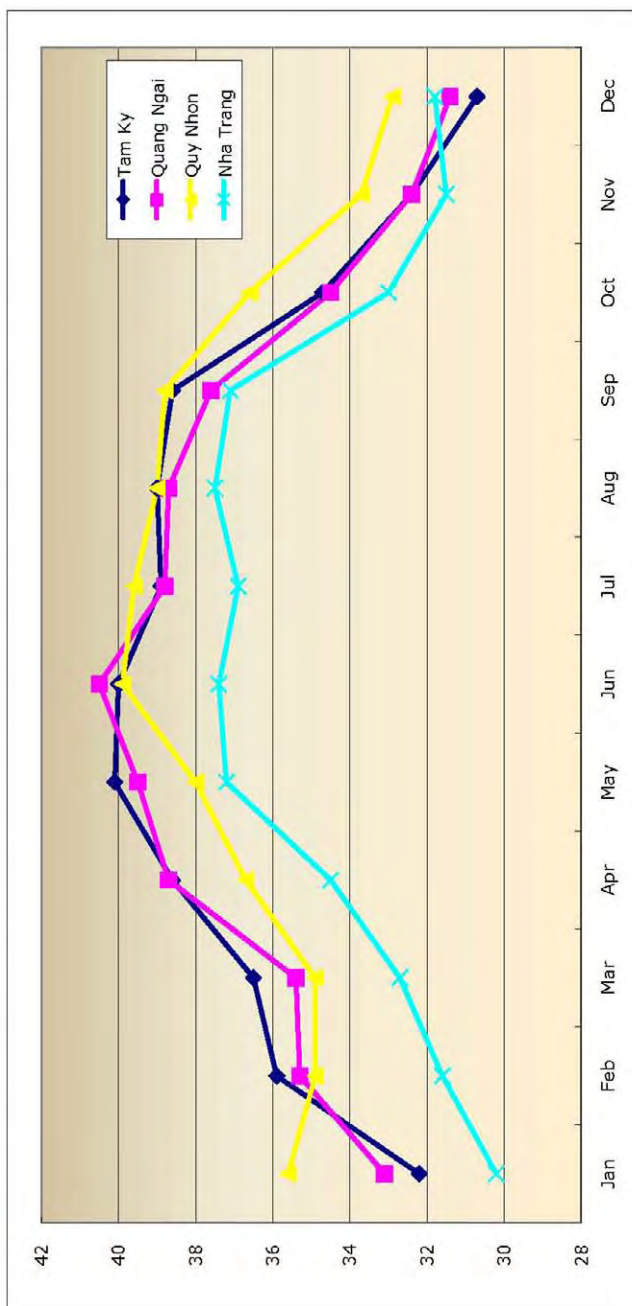
MONTHLY AVERAGE TEMPERATURE DATA (unit: °C)

W. Station	Jan	Feb	Mar	Apr	May	Jun	Jul	Aug	Sep	Oct	Nov	Dec	Average
Quang Nam (Tam Ky)	21.5	22.5	24.3	26.7	28.1	28.8	28.8	28.5	27.1	25.5	23.9	21.6	25.6
Quang Ngai (Quang Ngai)	21.9	23.0	24.7	27.0	28.5	29.0	29.0	28.7	27.4	25.9	24.3	22.1	26.0
Binh Dinh (Quy Nhon)	23.4	24.3	25.8	27.8	29.3	30.0	30.1	30.0	28.6	26.9	25.5	23.7	27.1
Khanh Hoa (Nha Trang)	23.9	24.5	25.8	27.4	28.5	28.7	28.5	28.5	27.7	26.6	25.7	24.4	26.7



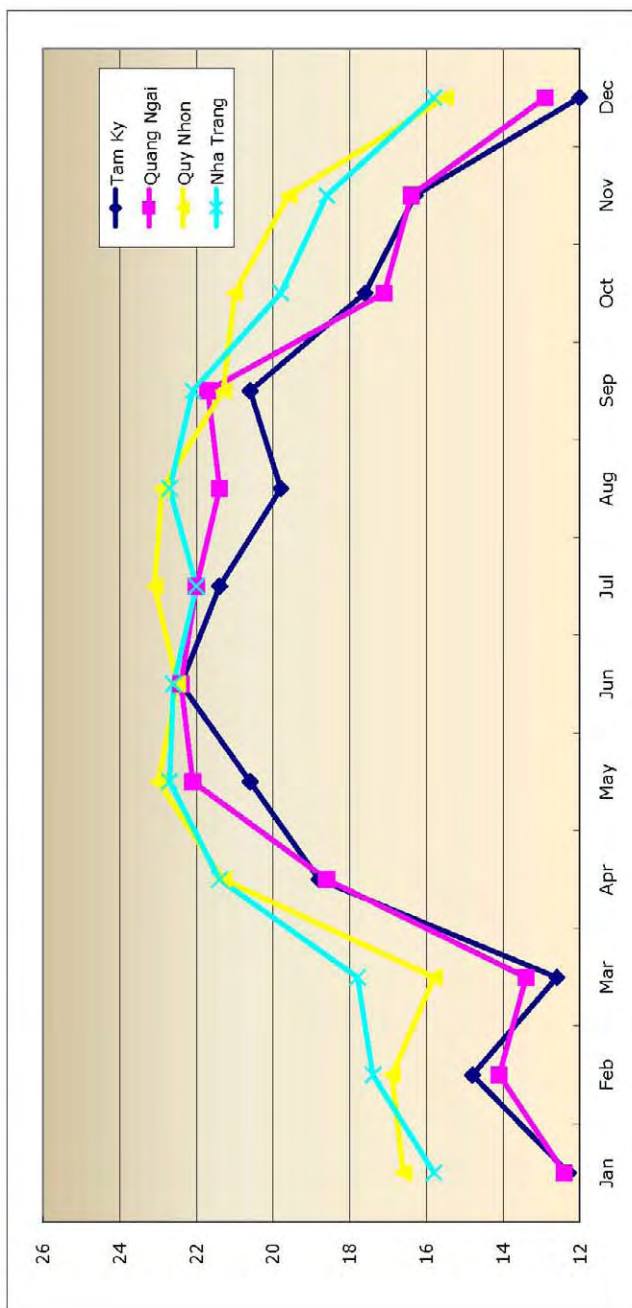
MONTHLY MAXIMUM TEMPERATURE DATA

W. Station	Jan	Feb	Mar	Apr	May	Jun	Jul	Aug	Sep	Oct	Nov	Dec	Max.
Tam Ky	32.2	35.9	36.5	38.6	40.1	40.0	38.9	39.0	38.6	34.7	32.4	30.7	40.1
Quang Ngai	33.1	35.3	35.4	38.7	39.5	40.5	38.8	38.7	37.6	34.5	32.4	31.4	40.5
Quy Nhon	35.6	34.9	34.9	36.7	38.0	39.9	39.6	39.0	38.8	36.6	33.7	32.9	39.9
Nha Trang	30.2	31.6	32.7	34.5	37.2	37.4	36.9	37.5	37.1	33.0	31.5	31.8	37.5



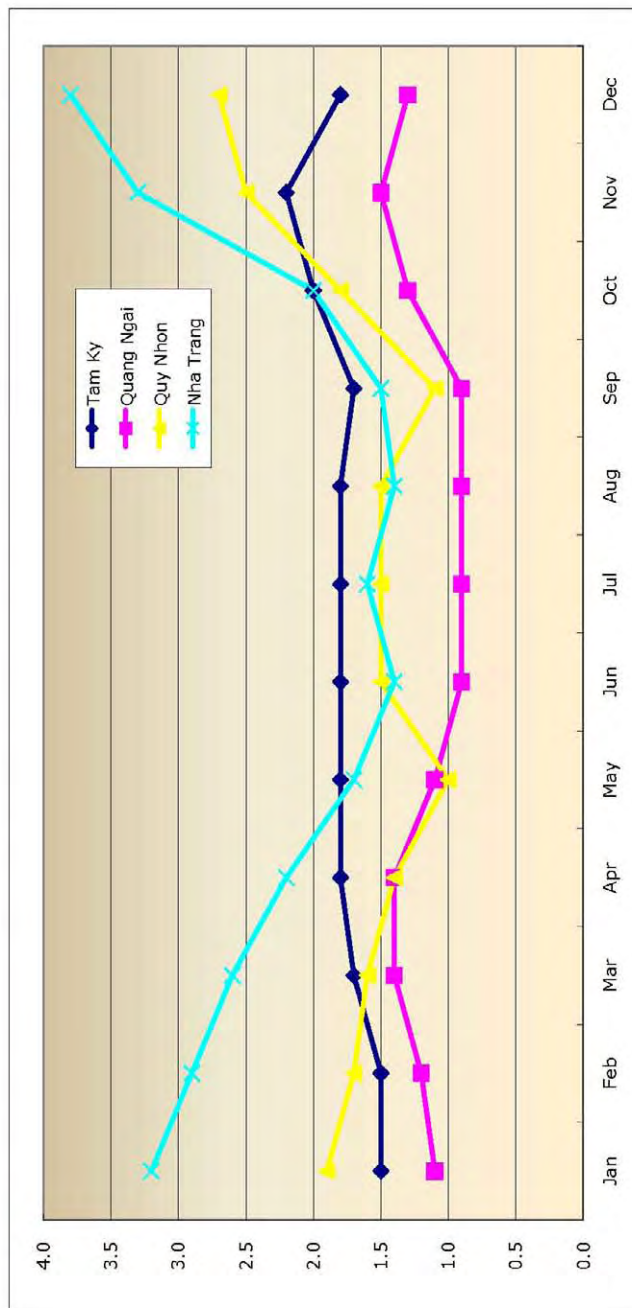
MONTHLY MINIMUM TEMPERATURE DATA

W. Station	Jan	Feb	Mar	Apr	May	Jun	Jul	Aug	Sep	Oct	Nov	Dec	Min.
Tam Ky	12.3	14.8	12.6	18.8	20.6	22.4	21.4	19.8	20.6	17.6	16.3	12.0	12.0
Quang Ngai	12.4	14.1	13.4	18.6	22.1	22.4	22.0	21.4	21.7	17.1	16.4	12.9	12.4
Quy Nhon	16.6	16.9	15.8	21.3	23.0	22.5	23.1	22.9	21.3	21.0	19.6	15.5	15.5
Nha Trang	15.8	17.4	17.8	21.4	22.7	22.6	22.0	22.7	22.1	19.8	18.6	15.8	15.8



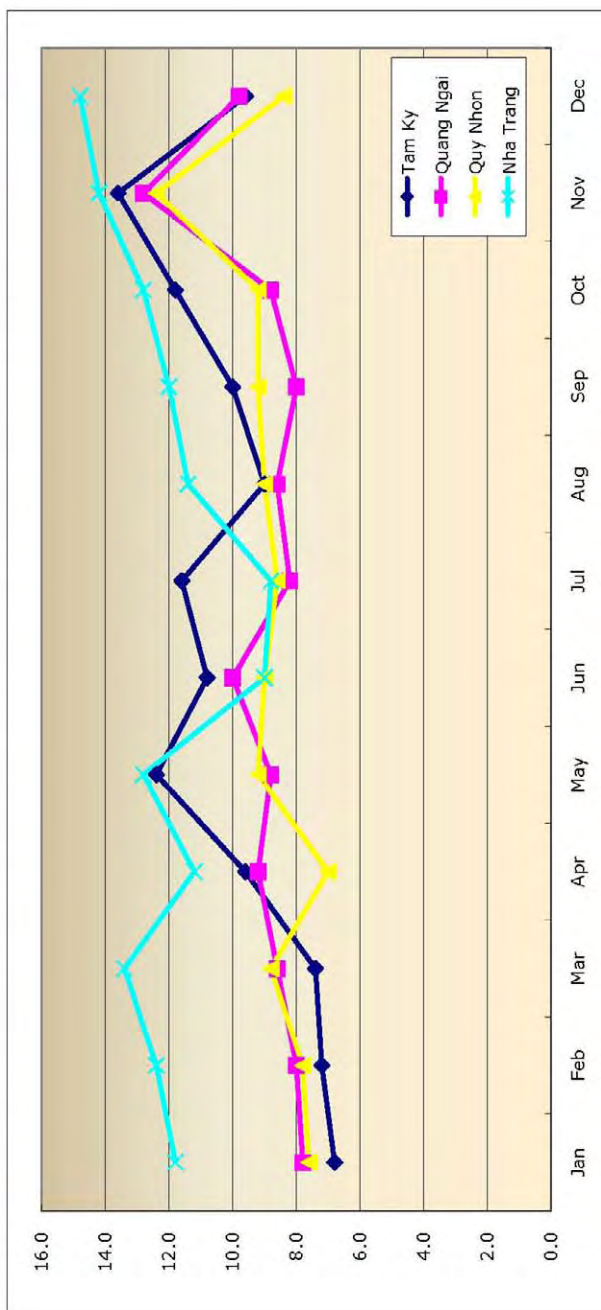
MONTHLY AVERAGE WIND VELOCITY DATA

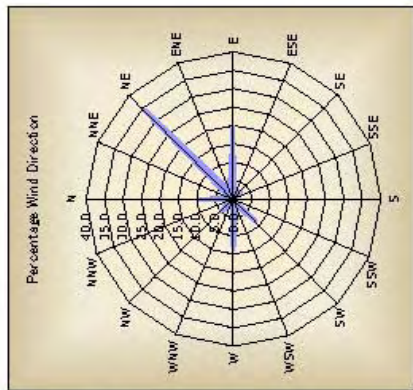
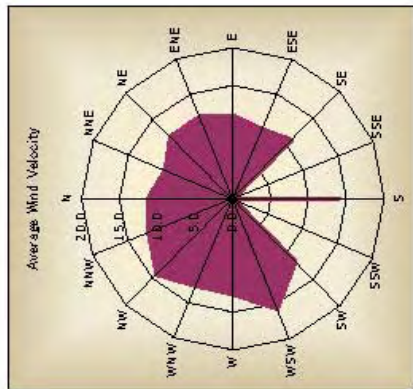
W. Station	Jan	Feb	Mar	Apr	May	Jun	Jul	Aug	Sep	Oct	Nov	Dec	Average
Tam Ky	1.5	1.5	1.7	1.8	1.8	1.8	1.8	1.8	1.7	2.0	2.2	1.8	1.8
Quang Ngai	1.1	1.2	1.4	1.4	1.1	0.9	0.9	0.9	0.9	1.3	1.5	1.3	1.2
Quy Nhon	1.9	1.7	1.6	1.4	1.0	1.5	1.5	1.5	1.1	1.8	2.5	2.7	1.7
Nha Trang	3.2	2.9	2.6	2.2	1.7	1.4	1.6	1.4	1.5	2.0	3.3	3.8	2.3



MONTHLY MAXIMUM WIND VELOCITY DATA

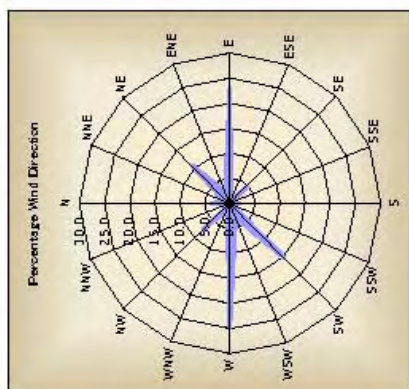
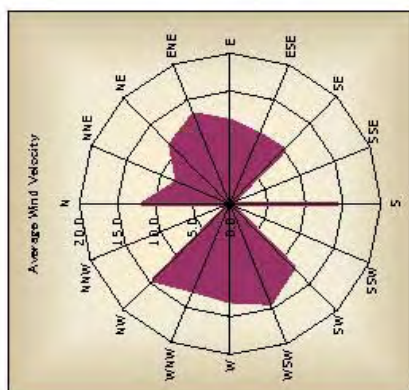
W. Station	Jan	Feb	Mar	Apr	May	Jun	Jul	Aug	Sep	Oct	Nov	Dec	Average
Tam Ky	6.8	7.2	7.4	9.6	12.4	10.8	11.6	9.0	10.0	11.8	13.6	9.6	10.0
Quang Ngai	7.8	8.0	8.6	9.2	8.8	10.0	8.2	8.6	8.0	8.8	12.8	9.8	9.1
Quy Nhon	7.6	7.8	8.8	7.0	9.2	9.0	8.6	9.0	9.2	9.2	12.4	8.4	8.9
Nha Trang	11.8	12.4	13.4	11.2	12.8	9.0	8.8	11.4	12.0	12.8	14.2	14.8	12.1





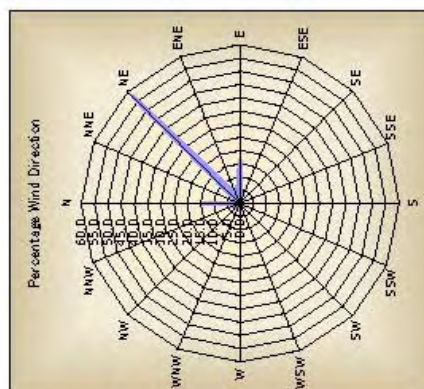
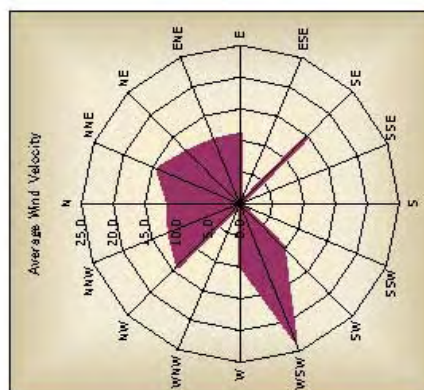
Tam Ky

Wind Direction	Frequency	Percentage Wind Direction	Average Wind Velocity
N	29	9.0	11.2
NNE	3	0.9	9.7
NE	110	34.0	11.6
ENE	9	2.8	11.7
E	63	19.4	11.0
ESE	1	0.3	10.0
SE	10	3.1	11.0
SSE	0	0.0	0.0
S	3	0.9	14.0
SSW	0	0.0	0.0
SW	27	8.3	11.7
WSW	6	1.9	15.7
W	44	13.6	12.6
WNW	2	0.6	12.5
NW	16	4.9	14.2
NNW	1	0.3	12.0



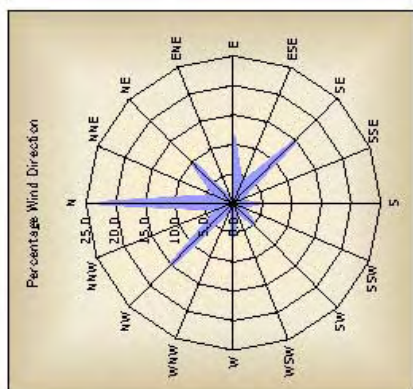
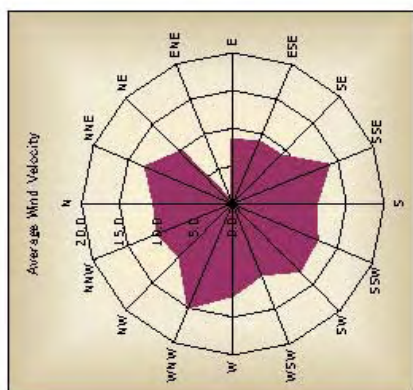
Tam Ky from Apr. to Sep.

Wind Direction	Frequency	Percentage Wind Direction	Average Wind Velocity
N	6	3.7	11.5
NNE	2	1.2	7.5
NE	17	10.5	11.1
ENE	4	2.5	12.8
E	37	22.8	11.0
ESE	1	0.6	10.0
SE	8	4.9	10.1
SSE	0	0.0	0.0
S	3	1.9	14.0
SSW	0	0.0	0.0
SW	25	15.4	11.9
WSW	5	3.1	14.2
W	40	24.7	12.9
WNW	2	1.2	12.5
NW	12	7.4	14.3
NNW	0	0.0	0.0



Tam Ky from Oct. to Mar.

Wind Direction	Frequency	Percentage Wind Direction	Average Wind Velocity
N	23	14.2	11.2
NNE	1	0.6	14.0
NE	93	57.4	11.6
ENE	5	3.1	10.8
E	26	16.0	10.9
ESE	0	0.0	0.0
SE	2	1.2	14.5
SSE	0	0.0	0.0
S	0	0.0	0.0
SSW	0	0.0	0.0
SW	2	1.2	9.5
WSW	1	0.6	23.0
W	4	2.5	9.5
WNW	0	0.0	0.0
NW	4	2.5	13.8
NNW	1	0.6	12.0

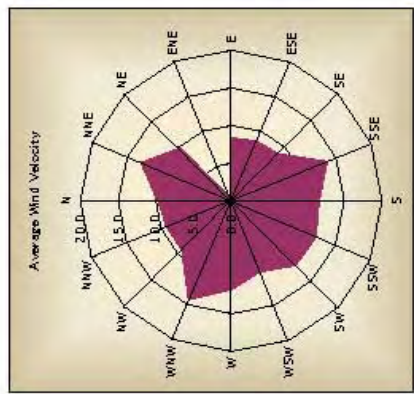
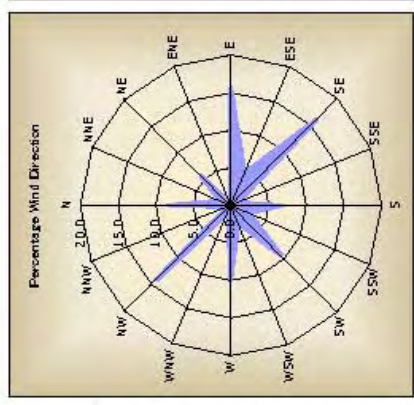


Quang Ngai

Wind Direction	Frequency	Percentage Wind Direction	Average Wind Velocity
N	86	22.4	10.3
NNE	12	3.1	12.4
NE	36	9.4	9.6
ENE	0	0.0	0.0
E	43	11.2	8.4
ESE	13	3.4	8.8
SE	56	14.6	8.9
SSE	2	0.5	13.5
S	16	4.2	10.9
SSW	5	1.3	12.0
SW	19	4.9	12.4
WSW	5	1.3	10.0
W	21	5.5	12.0
WNW	3	0.8	14.7
NW	57	14.8	9.8
NNW	10	2.6	10.5

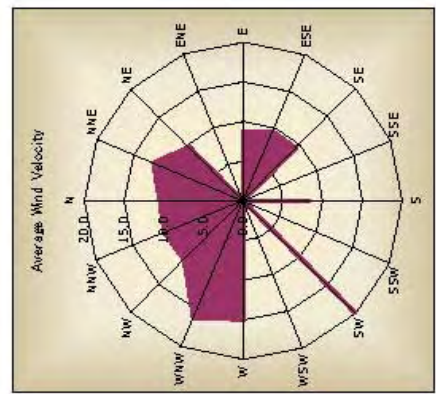
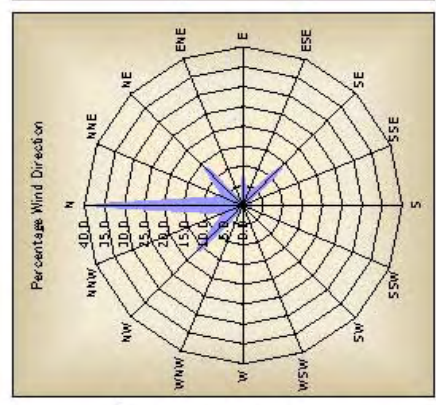
Quang Ngai from Apr. to Sep.

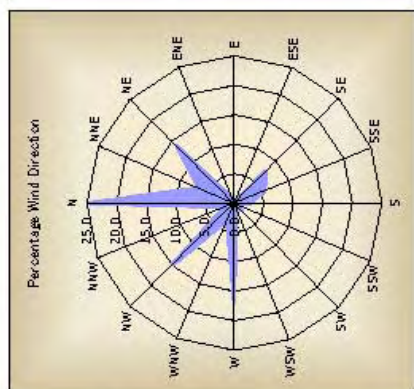
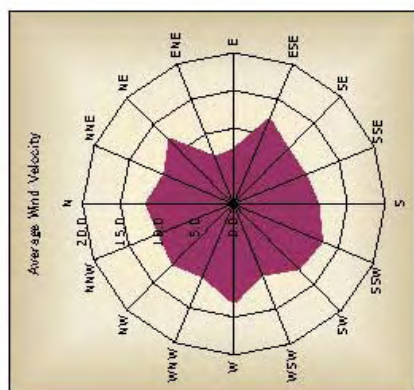
Wind Direction	Frequency	Percentage Wind Direction	Average Wind Velocity
N	16	8.3	9.5
NNE	3	1.6	12.7
NE	11	5.7	9.6
ENE	0	0.0	0.0
E	30	15.6	8.2
ESE	9	4.7	8.4
SE	31	16.1	8.6
SSE	2	1.0	13.5
S	13	6.8	11.5
SSW	5	2.6	12.0
SW	18	9.4	11.9
WSW	5	2.6	10.0
W	19	9.9	11.6
WNW	2	1.0	14.0
NW	27	14.1	9.0
NNW	1	0.5	9.0



Quang Ngai from Oct. to Mar.

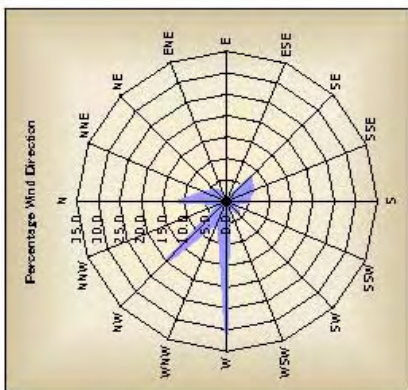
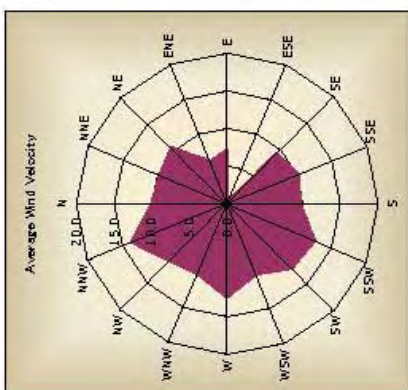
Wind Direction	Frequency	Percentage Wind Direction	Average Wind Velocity
N	70	36.5	10.5
NNE	9	4.7	12.3
NE	25	13.0	9.6
ENE	0	0.0	0.0
E	13	6.8	8.8
ESE	4	2.1	9.5
SE	25	13.0	9.4
SSE	0	0.0	0.0
S	3	1.6	8.3
SSW	0	0.0	0.0
SW	1	0.5	20.0
WSW	0	0.0	0.0
W	2	1.0	15.0
WNW	1	0.5	16.0
NW	30	15.6	10.5
NNW	9	4.7	10.7





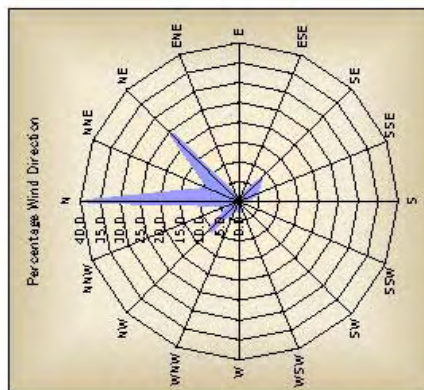
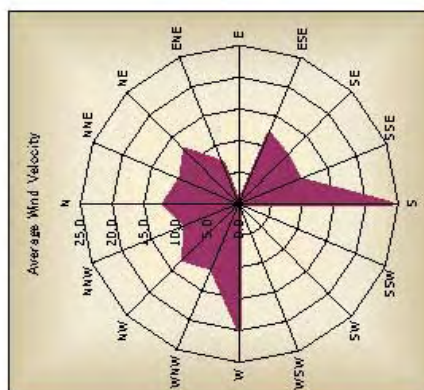
Quy Nhon

Wind Direction	Frequency	Percentage Wind Direction	Average Wind Velocity
N	94	24.4	11.4
NNE	25	6.5	9.8
NE	53	13.8	11.8
ENE	2	0.5	6.5
E	1	0.3	7.0
ESE	1	0.3	12.0
SE	29	7.5	10.0
SSE	21	5.5	10.1
S	10	2.6	11.0
SSW	2	0.5	12.5
SW	7	1.8	12.0
WSW	1	0.3	10.0
W	64	16.6	12.9
WNW	12	3.1	10.3
NW	57	14.8	11.2
NNW	6	1.6	10.5



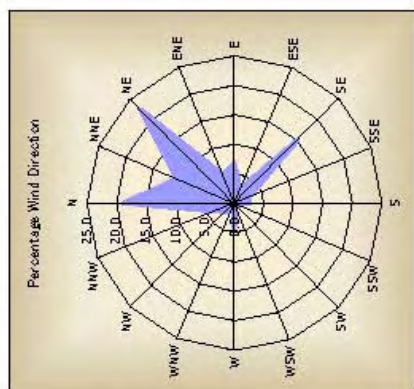
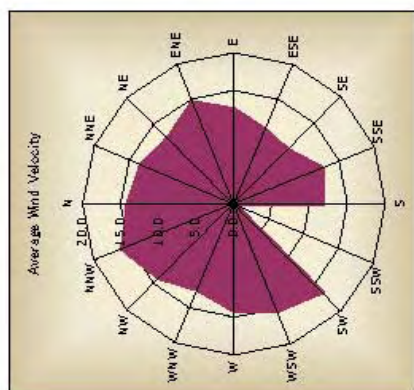
Quy Nhon from Apr. to Sep.

Wind Direction	Frequency	Percentage Wind Direction	Average Wind Velocity
N	21	10.9	9.9
NNE	10	5.2	9.6
NE	7	3.6	10.4
ENE	1	0.5	6.0
E	1	0.5	7.0
ESE	0	0.0	0.0
SE	15	7.8	9.3
SSE	12	6.2	10.1
S	9	4.7	9.6
SSW	2	1.0	12.5
SW	7	3.6	12.0
WSW	1	0.5	10.0
W	59	30.6	12.3
WNW	9	4.7	10.0
NW	37	19.2	10.6
NNW	2	1.0	13.5



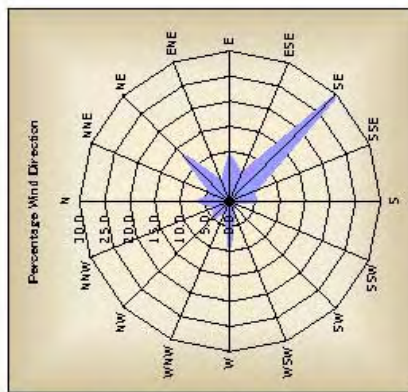
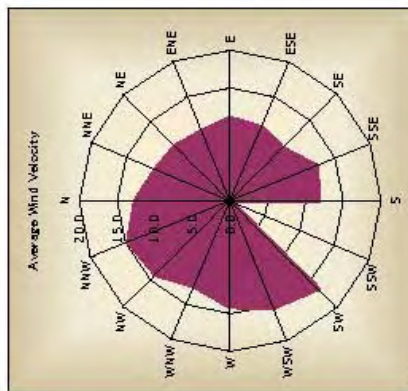
Quy Nhon from Oct. to Mar.

Wind Direction	Frequency	Percentage Wind Direction	Average Wind Velocity
N	73	38.0	11.8
NNE	15	7.8	10.0
NE	46	24.0	12.0
ENE	1	0.5	7.0
E	0	0.0	0.0
ESE	1	0.5	12.0
SE	14	7.3	10.7
SSE	9	4.7	10.2
S	1	0.5	24.0
SSW	0	0.0	0.0
SW	0	0.0	0.0
WSW	0	0.0	0.0
W	5	2.6	19.8
WNW	3	1.6	11.0
NW	20	10.4	12.4
NNW	4	2.1	9.0



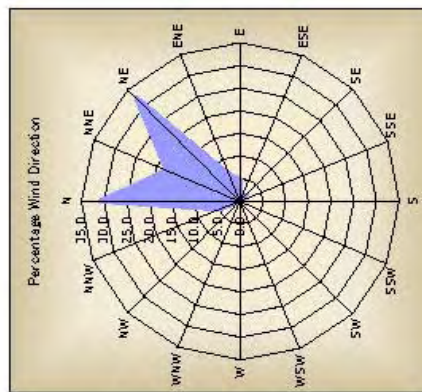
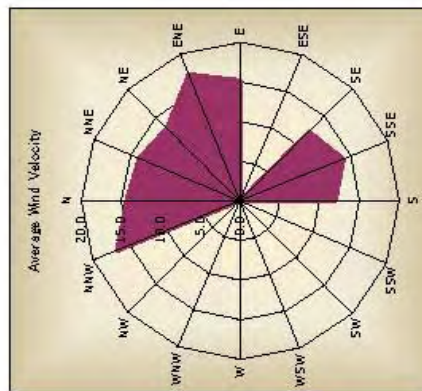
Nha Trang

Wind Direction	Frequency	Percentage Wind Direction	Average Wind Velocity
N	69	18.8	14.0
NNE	39	10.6	13.3
NE	83	22.6	12.3
ENE	19	5.2	14.5
E	25	6.8	12.5
ESE	10	2.7	10.6
SE	56	15.3	10.1
SSE	10	2.7	12.6
S	10	2.7	11.8
SSW	0	0.0	0.0
SW	2	0.5	16.5
WSW	3	0.8	15.3
W	16	4.4	14.1
WNW	3	0.8	12.3
NW	8	2.2	13.9
NNW	14	3.8	15.9



Nha Trang from Apr. to Sep.

Wind Direction	Frequency	Percentage Wind Direction	Average Wind Velocity
N	11	6.1	12.6
NNE	6	3.4	10.7
NE	22	12.3	10.3
ENE	7	3.9	10.0
E	16	8.9	11.0
ESE	10	5.6	10.6
SE	52	29.1	9.9
SSE	9	5.0	12.4
S	9	5.0	11.8
SSW	0	0.0	0.0
SW	2	1.1	16.5
WSW	3	1.7	15.3
W	16	8.9	14.1
WNW	3	1.7	12.3
NW	8	4.5	13.9
NNW	5	2.8	14.6



Nha Trang from Oct. to Mar.

Wind Direction	Frequency	Percentage Wind Direction	Average Wind Velocity
N	58	30.9	14.3
NNE	33	17.6	13.8
NE	61	32.4	13.0
ENE	12	6.4	17.2
E	9	4.8	15.2
ESE	0	0.0	0.0
SE	4	2.1	12.3
SSE	1	0.5	14.0
S	1	0.5	12.0
SSW	0	0.0	0.0
SW	0	0.0	0.0
WSW	0	0.0	0.0
W	0	0.0	0.0
WNW	0	0.0	0.0
NW	0	0.0	0.0
NNW	9	4.8	16.7

MONTHLY RAINFALL DATA AT TAM KY, QUANG NAM PROVINCE

Year	Jan	Feb	Mar	Apr	May	Jun	Jul	Aug	Sep	Oct	Nov	Dec	total
1979	40.8	19.8	1.7	4.9	234.7	369.4	43.3	52.1	114.7	385.1	338.8	123.8	1,729.1
1980	73.5	30.1	2.1	25.8	18.1	106.0	39.2	115.0	711.2	702.7	764.8	229.9	2,818.4
1981	124.2	25.8	6.2	18.0	72.4	102.5	62.5	25.9	227.9	1,299.6	682.5	533.1	3,180.6
1982	83.2	12.8	17.3	46.3	27.3	90.4	76.2	182.4	399.3	137.1	322.3	188.6	1,583.2
1983	102.9	1.8	9.4	82.4	7.8	255.7	4.2	93.2	91.9	1,085.4	557.7	180.5	2,472.9
1984	67.5	52.2	0.8	5.5	218.3	138.4	98.6	89.8	197.2	493.6	791.0	489.5	2,642.4
1985	55.3	3.1	18.7	93.7	83.9	226.3	45.1	24.8	423.0	748.0	1,107.9	435.1	3,264.9
1986	79.7	55.1	11.8	0.6	345.5	23.4	36.0	46.1	160.4	1,084.2	419.2	931.9	3,193.9
1987	47.0	72.8	113.9	7.7	13.8	55.7	93.1	87.1	363.1	187.2	709.8	134.3	1,885.5
1988	55.6	82.5	9.6	16.8	23.9	25.0	30.0	9.0	225.2	530.4	301.5	267.8	1,577.3
1989	140.3	8.7	82.1	8.8	421.6	94.7	233.3	75.4	139.7	206.5	264.5	101.5	1,777.1
1990	88.7	32.9	15.1	13.7	41.2	57.4	112.9	59.8	155.9	507.2	701.5	211.1	1,997.4
1991	87.7	128.7	321.6	381.5	33.9	13.9	20.2	266.5	165.5	622.3	212.7	122.3	2,376.8
1992	230.2	4.3	1.3	0.2	113.4	141.7	66.3	241.7	353.9	1,353.6	358.7	247.2	3,112.5
1993	79.8	20.5	10.4	74.9	25.9	109.3	0.5	39.4	233.7	1,126.1	659.1	393.5	2,773.1
1994	57.3	97.7	98.7	0.5	115.4	129.5	53.9	207.2	421.0	687.7	193.4	321.4	2,383.7
1995	23.6	59.2	26.1	0.6	58.8	38.0	45.5	19.7	397.4	1,300.4	843.5	192.9	3,005.7
1996	70.1	173.0	2.4	48.3	234.0	21.4	35.3	27.8	402.7	964.1	1,193.7	205.1	3,377.9
1997	86.7	22.0	10.8	37.0	29.9	106.6	217.4	145.5	963.3	357.1	210.8	296.9	2,484.0
1998	143.1	0.2	16.2	3.3	77.5	58.9	40.2	27.2	521.1	556.9	1,481.8	877.9	3,804.3
1999	271.6	78.4	113.4	242.6	42.6	89.8	78.0	14.4	238.1	514.7	1,163.3	1,534.1	4,381.0
2000	366.6	29.3	3.6	165.2	129.3	112.0	136.7	372.3	123.3	1,319.5	581.9	480.1	3,819.8
2001	109.1	81.8	89.3	1.2	222.0	103.2	100.3	156.7	105.0	861.6	468.5	560.9	2,859.6
2002	40.9	34.6	19.0	6.0	63.6	110.1	28.4	336.8	400.3	420.8	643.9	358.7	2,463.1
2003	33.6	85.2	41.2	15.7	45.9	104.4	25.7	86.2	228.7	817.0	287.8	300.0	2,071.4
2004	240.4	43.4	18.1	12.5	52.4	267.5	108.5	79.3	170.6	499.3	365.2	152.0	2,009.2
2005	39.0	18.3	72.8	5.5	15.8	74.9	226.2	179.3	296.9	1,026.7	575.2	628.2	3,158.8
Avg.	105.1	47.2	42.0	48.9	102.6	112.1	76.2	113.4	304.9	733.1	600.0	388.8	2,674.3

MONTHLY RAINFALL DATA AT QUANG NGAI, QUANG NGAI PROVINCE

Year	Jan	Feb	Mar	Apr	May	Jun	Jul	Aug	Sep	Oct	Nov	Dec	total
1979	54.4	21.2	5.7	8.9	381.1	360.3	78.6	267.4	88.5	537.2	428.5	135.6	2,367.4
1980	63.7	25.1	14.2	24.8	15.8	57.9	71.2	104.2	364.1	1,002.6	597.3	166.6	2,507.5
1981	108.5	14.2	4.0	8.2	92.1	201.5	30.2	87.4	281.5	1,127.5	717.9	377.9	3,050.9
1982	119.2	5.6	9.8	76.7	27.4	137.0	46.2	103.9	320.9	200.0	185.7	139.6	1,372.0
1983	61.1	1.5	4.6	2.4	19.0	172.4	13.1	63.9	107.6	871.0	535.8	191.5	2,043.9
1984	68.3	32.2	4.4	33.4	33.9	106.8	26.9	181.2	180.2	363.6	795.0	358.6	2,174.5
1985	83.9	2.2	17.6	27.5	161.8	248.0	40.7	55.8	360.8	442.8	1,177.8	208.4	2,827.3
1986	51.0	101.4	19.0	4.4	378.9	28.4	53.8	191.8	101.8	936.2	172.9	550.2	2,589.8
1987	29.5	38.7	10.5	28.9	0.7	149.5	169.3	124.1	260.8	185.0	1,207.4	119.6	2,324.0
1988	100.8	71.3	4.3	37.7	50.7	98.5	8.6	16.8	349.3	448.5	214.1	161.5	1,562.1
1989	101.8	15.7	145.1	3.2	324.7	64.7	207.2	194.7	198.5	150.1	153.6	143.9	1,703.2
1990	93.5	21.3	25.6	14.7	50.6	119.5	74.6	105.0	164.3	712.1	474.9	194.6	2,050.7
1991	56.6	62.0	229.1	121.7	4.7	47.1	67.5	191.6	194.5	627.1	110.3	179.2	1,891.4
1992	188.5	7.3	0.2	0.6	25.8	194.8	63.4	142.1	207.7	1,075.3	419.7	93.6	2,419.0
1993	20.0	11.9	24.8	39.2	45.3	13.6	24.3	26.1	198.3	558.8	611.2	315.9	1,889.4
1994	53.4	36.6	101.5	0.6	24.2	169.4	83.9	87.9	519.5	549.9	164.5	170.3	1,961.7
1995	49.4	84.7	57.8	0.9	67.0	51.0	31.8	6.1	396.3	1,186.1	634.2	207.4	2,772.7
1996	95.4	107.3	18.0	16.0	238.3	76.3	21.3	25.9	561.8	744.2	1,422.5	245.4	3,572.4
1997	122.3	24.5	5.5	33.7	47.2	5.9	213.6	171.6	787.8	319.9	211.8	211.6	2,155.4
1998	152.3	5.7	38.5	4.0	101.7	1.4	27.6	37.3	539.0	912.5	1,359.0	650.1	3,829.1
1999	243.4	69.5	114.7	323.6	111.7	49.5	78.5	38.8	216.5	730.8	772.8	1,197.8	3,947.6
2000	279.0	29.3	16.7	52.5	143.0	112.8	211.6	568.6	79.0	965.3	521.7	441.8	3,421.3
2001	64.7	32.1	115.9	9.8	200.8	111.3	38.1	210.1	142.3	883.6	291.1	483.1	2,582.9
2002	62.7	63.6	9.6	8.7	103.3	6.9	49.6	285.3	288.8	325.8	601.0	257.0	2,062.3
2003	15.1	13.7	40.5	20.3	60.1	9.1	61.6	184.1	513.8	1,133.0	408.9	179.8	2,640.0
2004	119.1	2.0	25.2	7.7	106.6	284.7	45.0	200.1	342.5	433.5	481.3	171.2	2,218.9
2005	11.8	34.4	83.9	2.5	0.7	119.7	84.6	148.6	289.0	970.0	732.0	667.6	3,144.8
Avg.	91.5	34.6	42.5	33.8	104.3	111.0	71.2	141.5	298.3	681.2	570.1	304.4	2,484.4

MONTHLY RAINFALL DATA AT QUY NHON, BINH DINH PROVINCE

Year	Jan	Feb	Mar	Apr	May	Jun	Jul	Aug	Sep	Oct	Nov	Dec	total
1979	64.0	9.4	5.9	4.7	50.1	142.3	7.4	11.2	124.6	504.5	330.6	173.5	1,428.2
1980	15.0	20.1	9.8	1.2	166.6	223.6	16.0	50.7	317.2	541.5	446.2	80.0	1,867.9
1981	64.9	15.3	11.9	11.0	76.3	208.1	74.6	35.2	192.5	884.2	869.4	241.9	2,685.3
1982	65.9	19.0	5.3	12.2	18.2	86.5	16.9	128.7	180.2	352.7	157.3	86.9	1,129.8
1983	49.4	-	5.1	-	7.0	95.3	18.8	113.4	228.8	533.1	393.6	148.9	1,593.4
1984	59.2	15.3	0.4	9.1	66.0	132.8	49.6	12.8	169.5	535.3	715.8	86.0	1,851.8
1985	69.7	0.5	16.3	76.6	302.8	43.2	73.5	2.2	343.5	405.4	719.8	292.9	2,346.4
1986	23.4	82.7	10.6	6.9	66.4	-	9.6	76.7	134.6	574.6	174.0	426.1	1,585.6
1987	40.7	45.3	0.8	6.0	9.4	47.3	5.6	38.4	193.2	249.1	1,143.2	59.8	1,838.8
1988	74.9	21.3	9.4	10.0	8.8	60.4	39.5	28.0	224.0	938.6	213.8	71.9	1,700.6
1989	41.5	21.6	177.7	0.7	78.1	75.4	68.8	80.6	154.1	277.2	295.3	105.4	1,376.4
1990	44.2	7.4	16.2	71.2	41.5	178.5	45.0	68.7	169.2	936.5	315.8	236.5	2,130.7
1991	50.6	38.6	81.3	101.2	33.2	79.5	15.0	22.4	353.0	691.8	398.3	117.1	1,982.0
1992	188.2	8.0	-	0.7	32.0	61.2	38.5	145.3	140.9	858.9	382.3	27.4	1,883.4
1993	10.7	2.9	17.8	16.7	19.9	6.3	8.7	77.6	294.2	922.3	379.6	476.9	2,233.6
1994	34.8	7.5	15.9	-	115.8	57.9	29.8	55.1	212.4	395.4	112.5	268.1	1,305.2
1995	21.4	16.9	56.1	4.4	97.8	2.8	52.6	44.2	406.7	375.4	303.3	107.0	1,488.6
1996	93.0	43.7	12.9	39.9	133.2	88.8	16.4	48.0	389.8	485.9	905.8	373.3	2,630.7
1997	28.7	19.5	1.4	75.4	80.0	55.4	13.5	15.1	396.2	468.9	285.3	120.7	1,560.1
1998	45.0	0.2	34.0	7.8	223.7	29.5	58.6	101.0	217.8	711.2	1,126.6	336.1	2,891.5
1999	71.1	90.8	6.1	124.0	45.4	5.4	7.8	3.4	165.7	697.3	574.1	698.3	2,489.4
2000	125.1	12.5	8.7	39.1	354.4	50.9	88.2	129.7	63.6	534.3	369.5	223.4	1,999.4
2001	25.2	16.4	95.5	23.4	87.6	20.8	28.5	114.5	123.7	500.0	218.1	86.0	1,339.7
2002	14.5	50.3	4.3	26.7	49.5	29.5	26.5	200.1	452.2	259.9	624.9	347.3	2,085.7
2003	19.1	1.2	7.5	0.5	129.8	177.7	35.6	120.9	140.6	903.4	312.5	113.6	1,962.4
2004	52.7	0.1	2.8	0.5	74.7	325.6	24.9	72.4	281.4	235.3	231.9	63.0	1,365.3
2005	3.3	12.2	136.0	19.9	49.0	27.0	13.3	20.4	362.4	914.3	487.7	592.1	2,637.6
Avg.	51.7	22.3	28.8	27.6	89.5	88.9	32.7	67.3	238.2	581.0	462.5	220.7	1,911.2