

7. その他の資料・情報

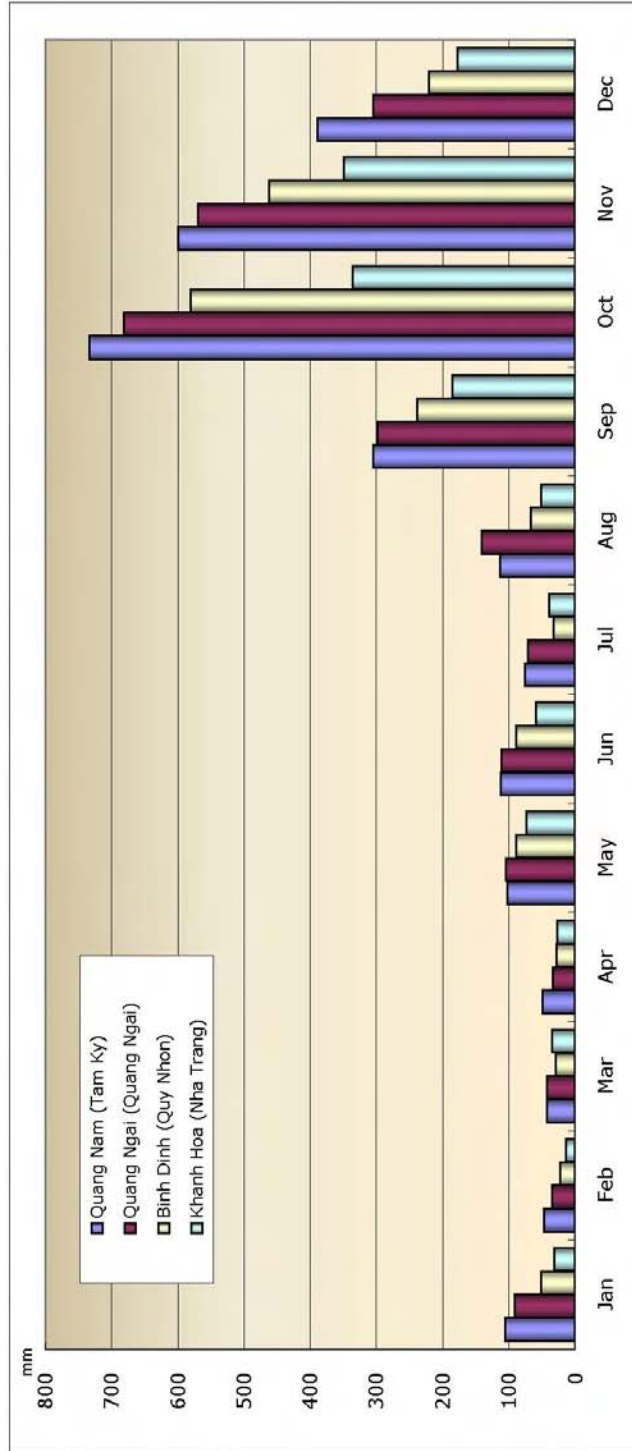
サイト選定基準：予備調査報告書（抄）

1. DARD による選別された場所であること
2. 他プロジェクト（「ベ」国または他ドナーによる植林事業）との重複がないこと
3. 植林事業以外のプロジェクトと重複していないこと
4. 海岸保全林（飛砂防備林、防風林）造成の必要性があること
5. 国有地・公有地であること
6. 「ベ」国側の森林維持管理体制が確認できること
7. アグロ・フォレストリーや他の目的に重複利用されていないこと
8. 無償資金協力制度との整合性が認められたこと
9. 森林造成によって地域社会に社会経済的によい効果をもたらすこと
10. 森林造成によって環境改善効果が期待できること
11. サイトが「ベ」国側が対象と位置づける県内にあること
12. アクセス道路の開設が困難でないこと
13. 条件が植栽に適していること
14. 砂嘴状地形等、波を被る危険性が高い箇所ではなく、かつ、舟を用いずに車でアクセスできること
15. 植栽を妨げる次の要因を持つ地形でないこと
  - ① 地表面の勾配が 10 度以上ある箇所
  - ② 砂嘴状地形で、舟を使用しないと植栽できない箇所
  - ③ 静砂垣を必要とする箇所
  - ④ 波を被った形跡が認められる箇所
  - ⑤ 雨期に長期間冠水する箇所
  - ⑥ アクセス道の作設が困難な箇所
16. 植林地のプライオリティーは次のとおりになる。
  - ① 流砂地
  - ② 風蝕地
  - ③ 海岸に隣接した場所
  - ④ 雨期に頻繁に浸水する場所
  - ⑤ 半固定砂地
  - ⑥ 高木の生育が悪く、疎らにある場所
  - ⑦ 老齢林
17. サイト以外に植栽地を拡大できる可能性

Weather Station	Level of Station	Number of Observation (times/day)	Location	Altitude (m)	Height of Anemometer and Anemoscope (m)
Quang Nam (Tam Ky)	level II station	4	Tam Ky Town, Quang Nam Province Lat. 15°34' N. Long. 108°28' E.	20.89	12.00
Quang Ngai (Quang Ngai)	level I station	8	Quang Ngai Town, Quang Ngai Province Lat. 15°07' N. Long. 108°48' E.	8.07	12.00
Binh Dinh (Quy Nhon)	level I station	8	Quy Nhon City, Binh Dinh Province Lat. 13°46' N. Long. 109°13' E.	5.94	12.00
Khanh Hoa (Nha Trang)	level I station	8	Nha Trang City, Khanh Hoa Province Lat. 12°15' N. Long. 109°12' E.	2.65	12.00

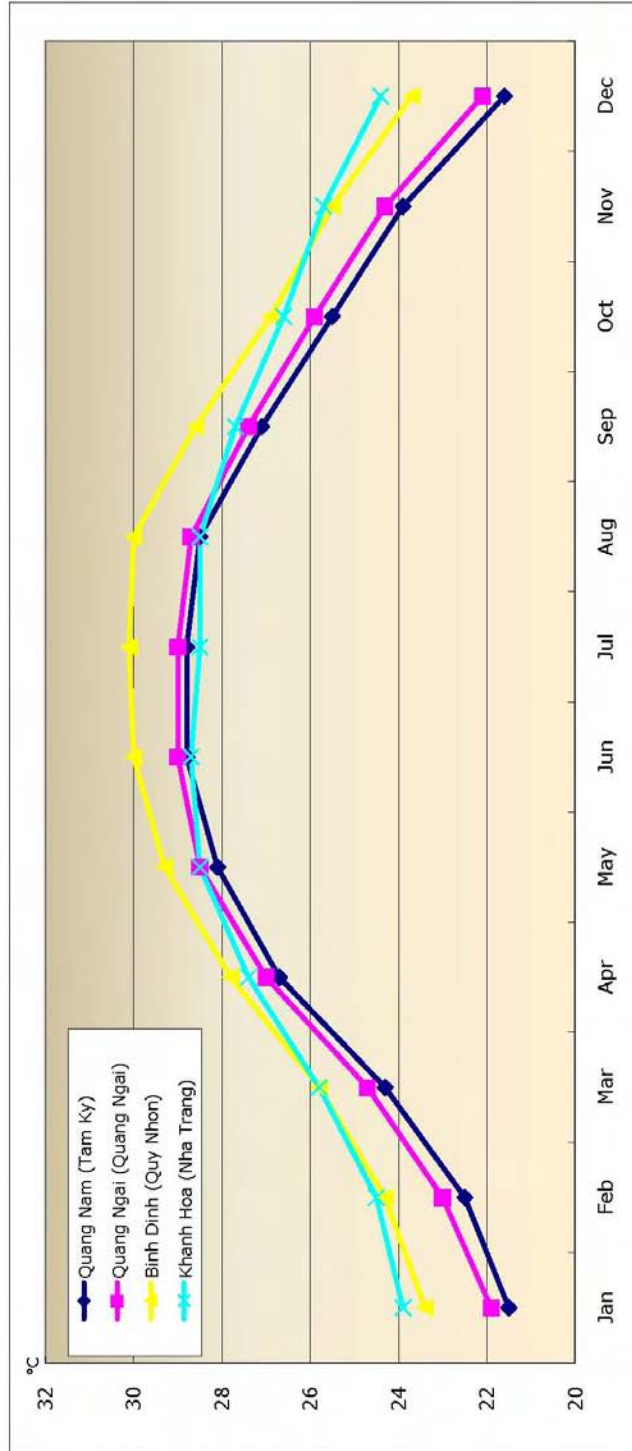
MONTHLY RAINFALL DATA (unit: mm)

W. Station	Jan	Feb	Mar	Apr	May	Jun	Jul	Aug	Sep	Oct	Nov	Dec	total
Quang Nam (Tam Ky)	105.1	47.2	42.0	48.9	102.6	112.1	76.2	113.4	304.9	733.1	600.0	388.8	2,674.3
Quang Ngai (Quang Ngai)	91.5	34.6	42.5	33.8	104.3	111.0	71.2	141.5	298.3	681.2	570.1	304.4	2,484.4
Binh Dinh (Quy Nhon)	51.7	22.3	28.8	27.6	89.5	88.9	32.7	67.3	238.2	581.0	462.5	220.7	1,911.2
Khanh Hoa (Nha Trang)	31.3	13.3	34.7	26.4	73.4	59.2	38.6	51.1	185.7	335.6	348.7	178.1	1,376.1



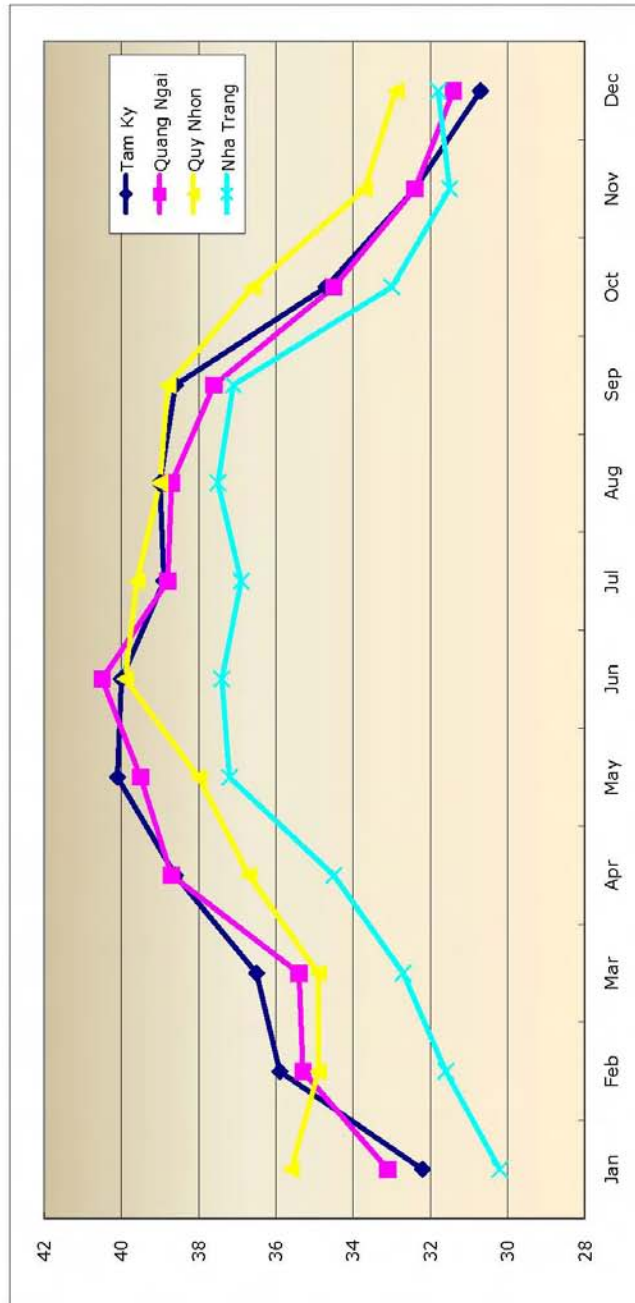
MONTHLY AVERAGE TEMPERATURE DATA (unit: °C)

W. Station	Jan	Feb	Mar	Apr	May	Jun	Jul	Aug	Sep	Oct	Nov	Dec	Average
Quang Nam (Tam Ky)	21.5	22.5	24.3	26.7	28.1	28.8	28.8	28.5	27.1	25.5	23.9	21.6	25.6
Quang Ngai (Quang Ngai)	21.9	23.0	24.7	27.0	28.5	29.0	29.0	28.7	27.4	25.9	24.3	22.1	26.0
Binh Dinh (Quy Nhon)	23.4	24.3	25.8	27.8	29.3	30.0	30.1	30.0	28.6	26.9	25.5	23.7	27.1
Khanh Hoa (Nha Trang)	23.9	24.5	25.8	27.4	28.5	28.7	28.5	28.5	27.7	26.6	25.7	24.4	26.7



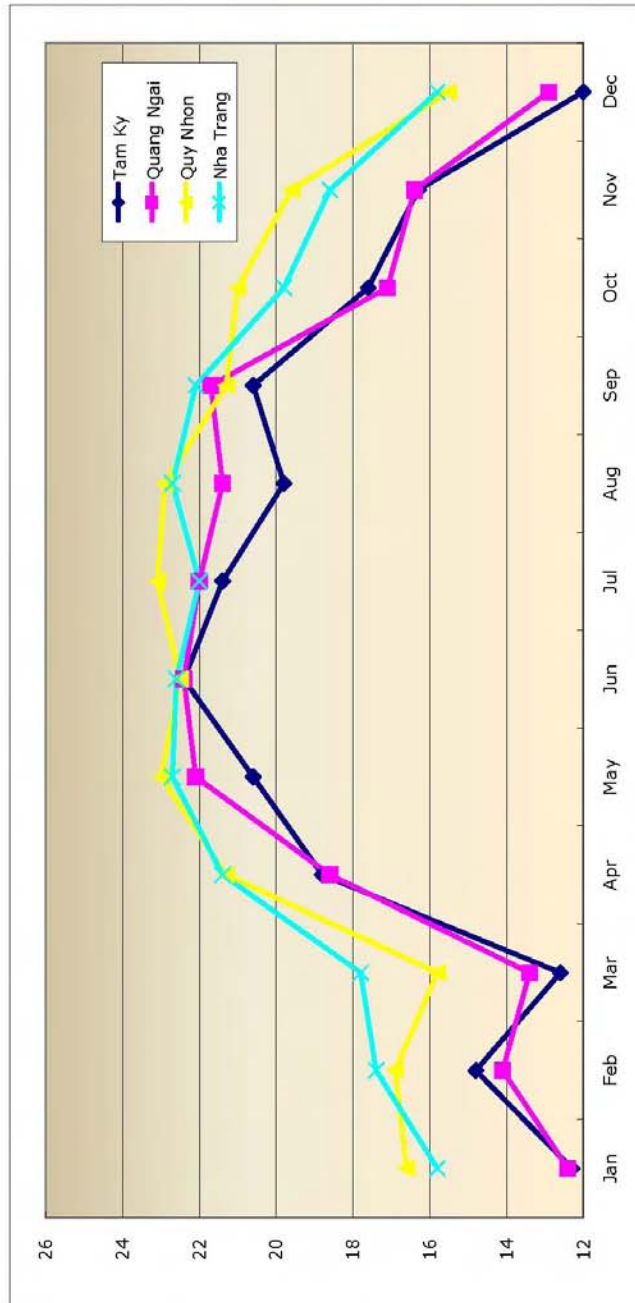
MONTHLY MAXIMUM TEMPERATURE DATA

W. Station	Jan	Feb	Mar	Apr	May	Jun	Jul	Aug	Sep	Oct	Nov	Dec	Max.
Tam Ky	32.2	35.9	36.5	38.6	40.1	40.0	38.9	39.0	38.6	34.7	32.4	30.7	40.1
Quang Ngai	33.1	35.3	35.4	38.7	39.5	40.5	38.8	38.7	37.6	34.5	32.4	31.4	40.5
Quy Nhon	35.6	34.9	34.9	36.7	38.0	39.9	39.6	39.0	38.8	36.6	33.7	32.9	39.9
Nha Trang	30.2	31.6	32.7	34.5	37.2	37.4	36.9	37.5	37.1	33.0	31.5	31.8	37.5



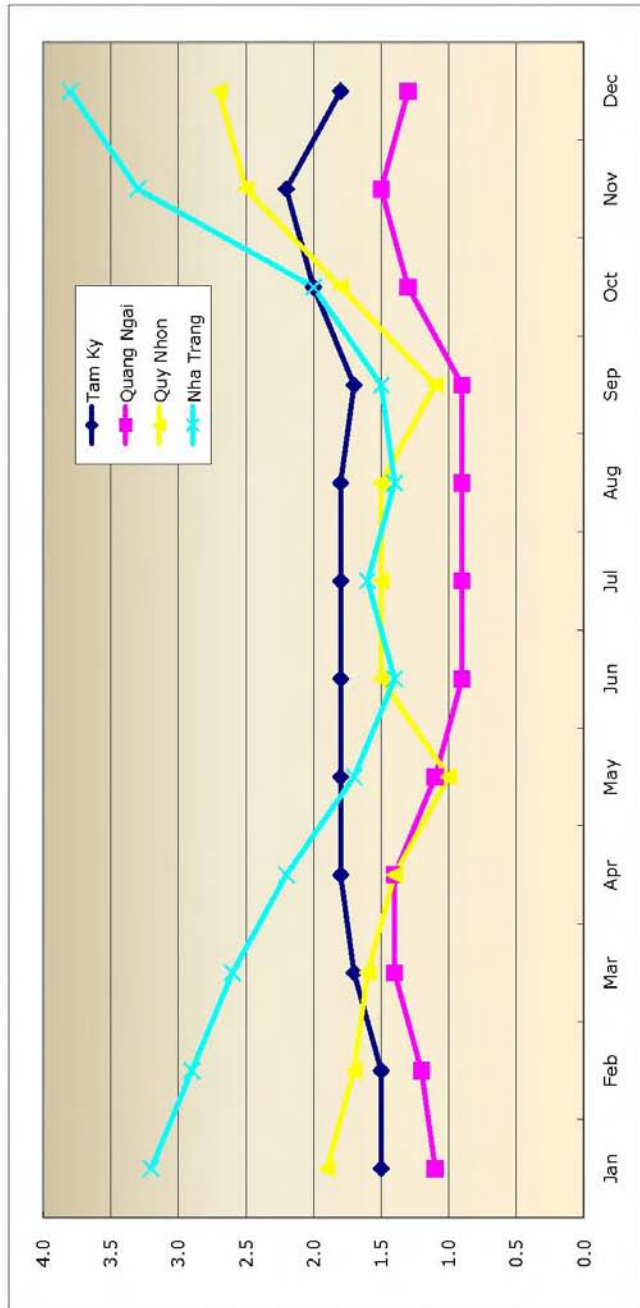
MONTHLY MINIMUM TEMPERATURE DATA

W. Station	Jan	Feb	Mar	Apr	May	Jun	Jul	Aug	Sep	Oct	Nov	Dec	Min.
Tam Ky	12.3	14.8	12.6	18.8	20.6	22.4	21.4	19.8	20.6	17.6	16.3	12.0	12.0
Quang Ngai	12.4	14.1	13.4	18.6	22.1	22.4	22.0	21.4	21.7	17.1	16.4	12.9	12.4
Quy Nhon	16.6	16.9	15.8	21.3	23.0	22.5	23.1	22.9	21.3	21.0	19.6	15.5	15.5
Nha Trang	15.8	17.4	17.8	21.4	22.7	22.6	22.0	22.7	22.1	19.8	18.6	15.8	15.8



MONTHLY AVERAGE WIND VELOCITY DATA

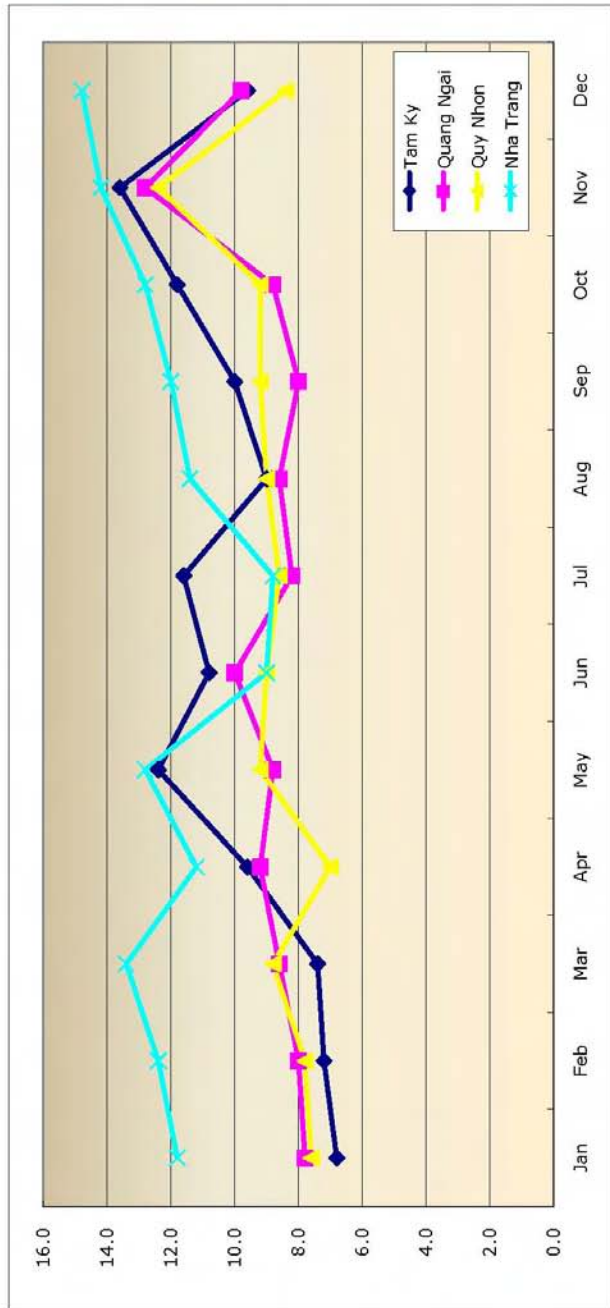
W. Station	Jan	Feb	Mar	Apr	May	Jun	Jul	Aug	Sep	Oct	Nov	Dec	Average
Tam Ky	1.5	1.5	1.7	1.8	1.8	1.8	1.8	1.8	1.7	2.0	2.2	1.8	1.8
Quang Ngai	1.1	1.2	1.4	1.4	1.1	0.9	0.9	0.9	0.9	1.3	1.5	1.3	1.2
Quy Nhon	1.9	1.7	1.6	1.4	1.0	1.5	1.5	1.5	1.1	1.8	2.5	2.7	1.7
Nha Trang	3.2	2.9	2.6	2.2	1.7	1.4	1.6	1.4	1.5	2.0	3.3	3.8	2.3

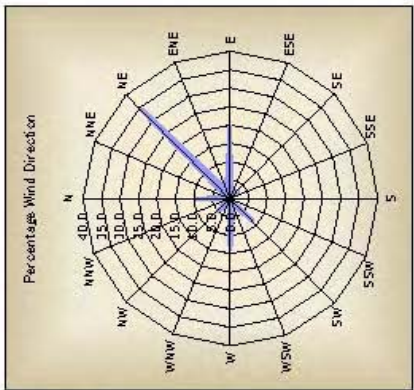
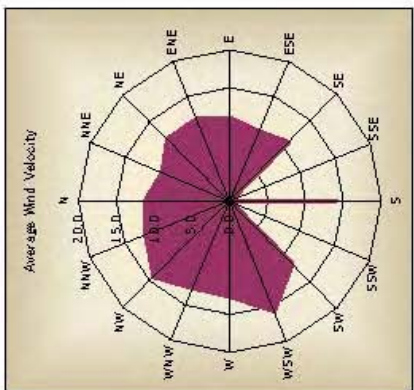




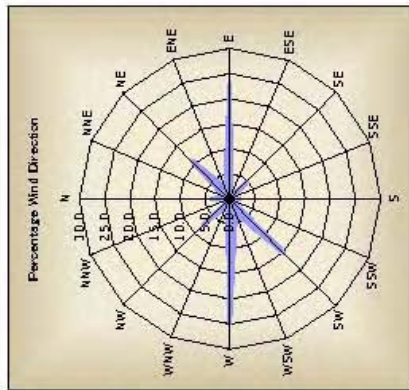
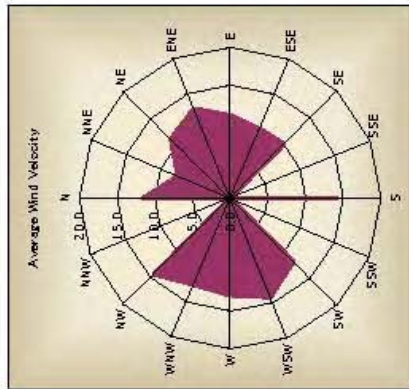
MONTHLY MAXIMUM WIND VELOCITY DATA

W. Station	Jan	Feb	Mar	Apr	May	Jun	Jul	Aug	Sep	Oct	Nov	Dec	Average
Tam Ky	6.8	7.2	7.4	9.6	12.4	10.8	11.6	9.0	10.0	11.8	13.6	9.6	10.0
Quang Ngai	7.8	8.0	8.6	9.2	8.8	10.0	8.2	8.6	8.0	8.8	12.8	9.8	9.1
Quy Nhon	7.6	7.8	8.8	7.0	9.2	9.0	8.6	9.0	9.2	9.2	12.4	8.4	8.9
Nha Trang	11.8	12.4	13.4	11.2	12.8	9.0	8.8	11.4	12.0	12.8	14.2	14.8	12.1



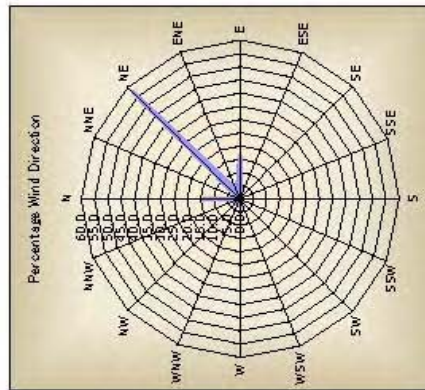
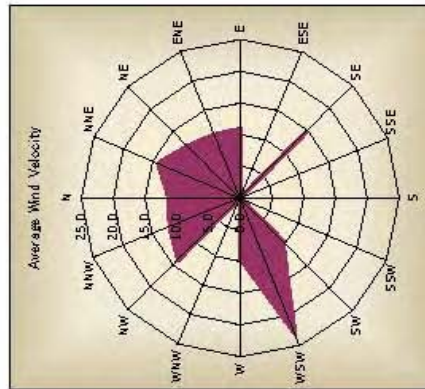


Wind Direction	Frequency	Percentage Wind Direction	Average Wind Velocity
N	29	9.0	11.2
NNE	3	0.9	9.7
NE	110	34.0	11.6
ENE	9	2.8	11.7
E	63	19.4	11.0
ESE	1	0.3	10.0
SE	10	3.1	11.0
SSE	0	0.0	0.0
S	3	0.9	14.0
SSW	0	0.0	0.0
SW	27	8.3	11.7
WSW	6	1.9	15.7
W	44	13.6	12.6
WNW	2	0.6	14.2
NW	16	4.9	14.2
NNW	1	0.3	12.0



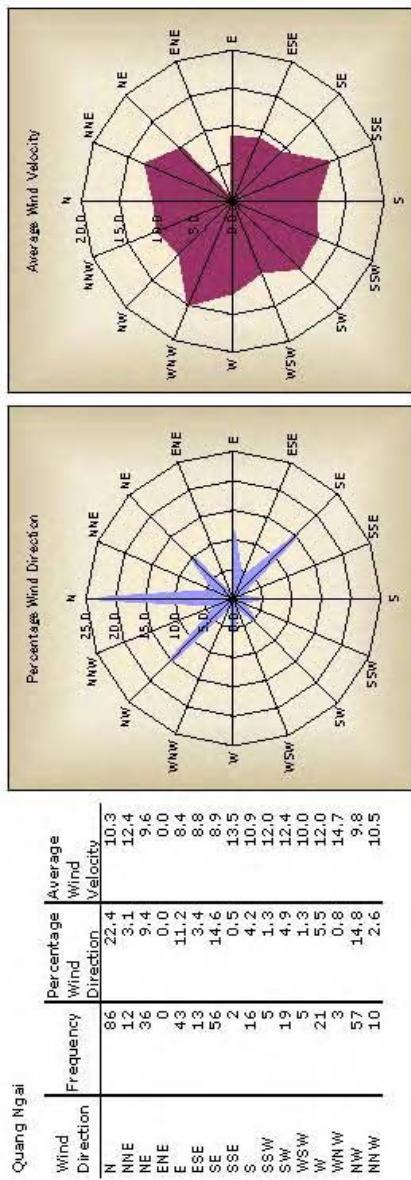
Tam Ky from Apr. to Sep.

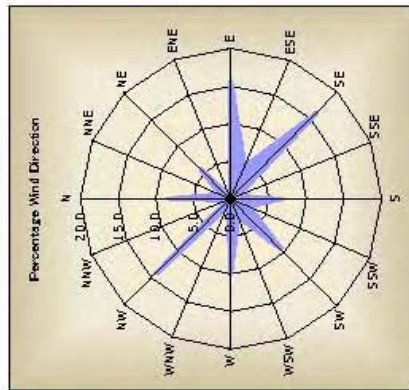
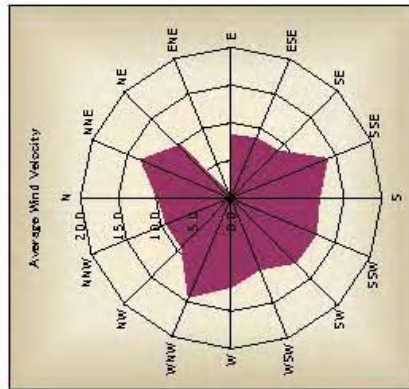
Wind Direction	Frequency	Percentage Wind Direction	Average Wind Velocity
N	6	3.7	11.5
NNE	2	1.2	7.5
NE	17	10.5	11.1
ENE	4	2.5	12.8
E	37	22.8	11.0
ESE	1	0.6	10.0
SE	8	4.9	10.1
SSE	0	0.0	0.0
S	3	1.9	14.0
SSW	0	0.0	0.0
SW	25	15.4	11.9
WSW	5	3.1	14.2
W	40	24.7	12.9
WNW	2	1.2	12.5
NW	12	7.4	14.3
NNW	0	0.0	0.0



Tam Ky from Oct. to Mar.

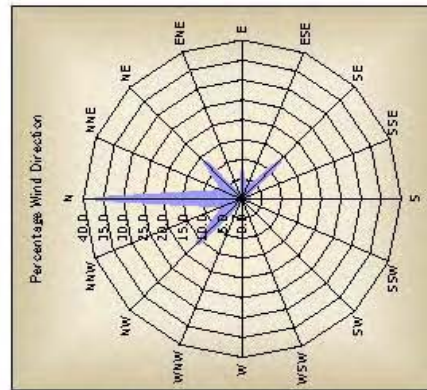
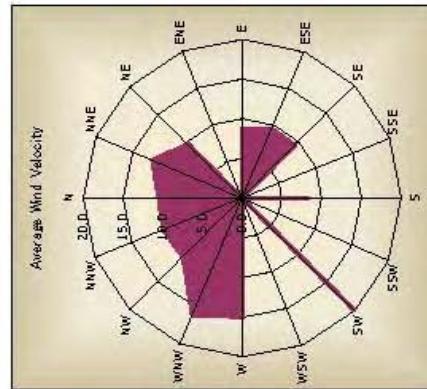
Wind Direction	Frequency	Percentage Wind Direction	Average Wind Velocity
N	23	14.2	11.2
NNE	1	0.6	14.0
NE	93	57.4	11.6
ENE	5	3.1	10.8
E	26	16.0	10.9
ESE	0	0.0	0.0
SE	2	1.2	14.5
SSE	0	0.0	0.0
S	0	0.0	0.0
SSW	0	0.0	0.0
SW	2	1.2	9.5
WSW	1	0.6	23.0
W	4	2.5	9.5
WNW	0	0.0	0.0
NW	4	2.5	13.8
NNW	1	0.6	12.0





Quang Ngai from Apr. to Sep.

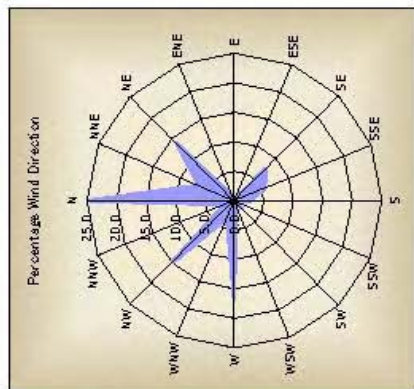
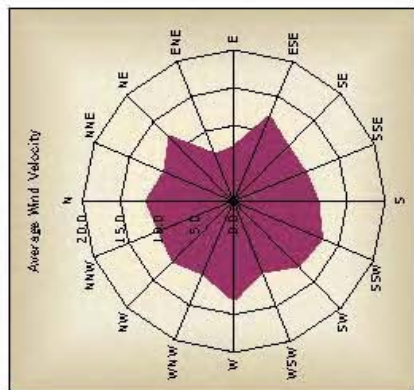
Wind Direction	Frequency	Percentage Wind Direction	Average Wind Velocity
N	16	8.3	9.5
NNE	3	1.6	12.7
NE	11	5.7	9.6
ENE	0	0.0	0.0
E	30	15.6	8.2
ESE	9	4.7	8.4
SE	31	16.1	8.6
SSE	12	6.2	13.5
S	13	6.8	11.5
SSW	5	2.6	12.0
SW	18	9.4	11.9
WSW	5	2.6	10.0
W	19	9.9	11.6
WNW	2	1.0	14.0
NW	27	14.1	9.0
NNW	1	0.5	9.0



Quang Ngai from Oct. to Mar.

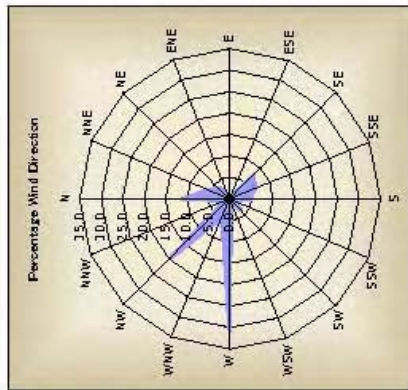
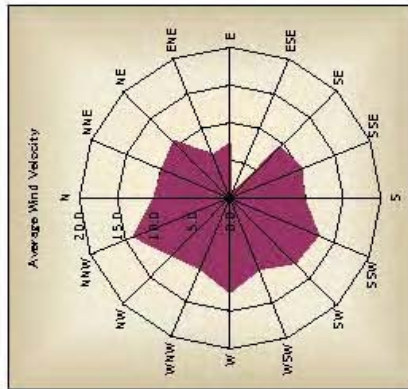
Wind Direction	Frequency	Percentage Wind Direction	Average Wind Velocity
N	70	36.5	10.5
NNE	9	4.7	12.3
NE	25	13.0	9.6
ENE	0	0.0	0.0
E	13	6.8	8.8
ESE	4	2.1	9.5
SE	25	13.0	9.4
SSE	0	0.0	0.0
S	3	1.6	8.2
SSW	0	0.0	0.0
SW	1	0.5	20.0
WSW	0	0.0	0.0
W	2	1.0	15.0
WNW	1	0.5	16.0
NW	30	15.6	10.5
NNW	9	4.7	10.7





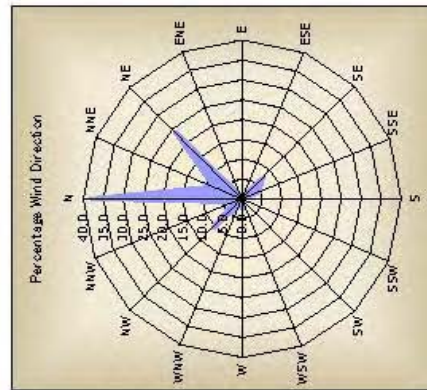
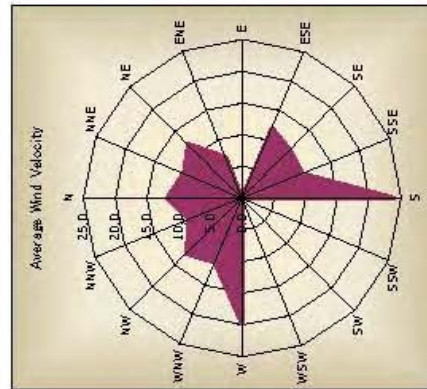
Quy Nhon

Wind Direction	Frequency	Percentage Wind Direction	Average Wind Velocity
N	94	24.4	11.4
NNE	25	6.5	9.8
NE	53	13.8	11.8
ENE	2	0.5	6.5
E	1	0.3	7.0
ESE	1	0.3	12.0
SE	29	7.5	10.0
SSE	21	5.5	10.1
S	10	2.6	11.0
SSW	2	0.5	12.5
SW	7	1.8	12.0
WSW	1	0.3	10.0
W	64	16.6	12.9
WNW	12	3.1	10.3
NW	57	14.8	11.2
NNW	6	1.6	10.5



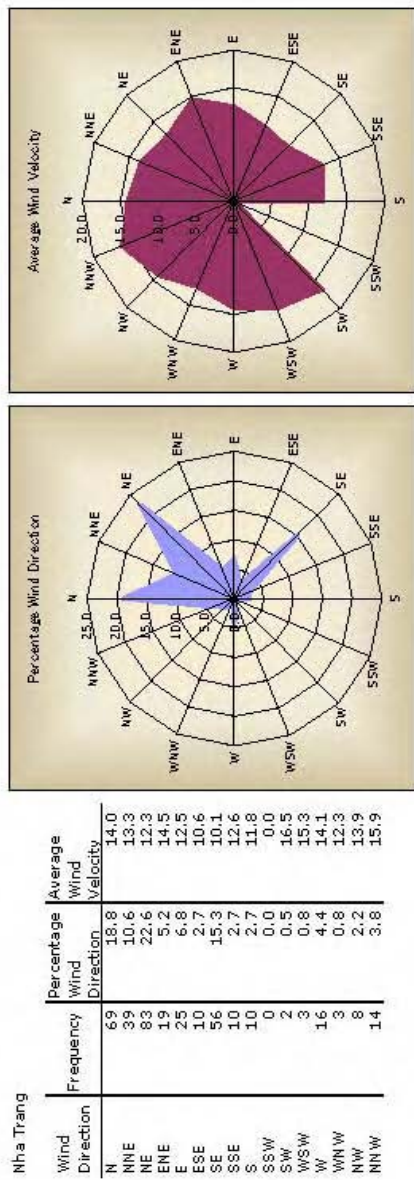
Quỳ Nhon from Apr. to Sep.

Wind Direction	Frequency	Percentage Wind Direction	Average Wind Velocity
N	21	10.9	9.9
NNE	10	5.2	9.6
NE	7	3.6	10.4
ENE	1	0.5	6.0
E	1	0.5	7.0
ESE	0	0.0	0.0
SE	15	7.8	9.3
SSE	12	6.2	10.1
S	9	4.7	9.6
SSW	2	1.0	12.5
SW	7	3.6	12.0
WSW	1	0.5	10.0
W	59	30.6	12.3
WNW	9	4.7	10.0
NW	37	19.2	10.6
NNW	2	1.0	13.5

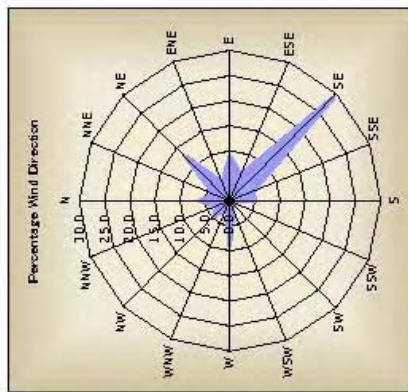
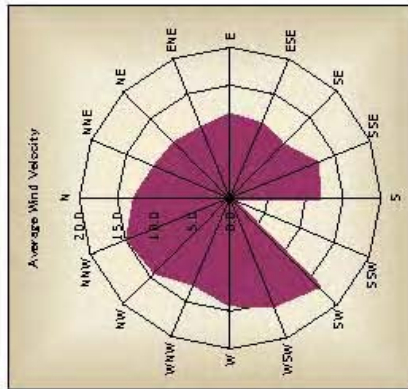


Quỳ Nhon from Oct. to Mar.

Wind Direction	Frequency	Percentage Wind Direction	Average Wind Velocity
N	73	38.0	11.8
NNE	15	7.8	10.0
NE	46	24.0	12.0
ENE	1	0.5	7.0
E	0	0.0	0.0
ESE	1	0.5	12.0
SE	14	7.3	10.7
SSE	9	4.7	10.2
S	1	0.5	24.0
SSW	0	0.0	0.0
SW	0	0.0	0.0
WSW	0	0.0	0.0
W	5	2.6	19.8
WNW	3	1.6	11.0
NW	20	10.4	12.4
NNW	4	2.1	9.0

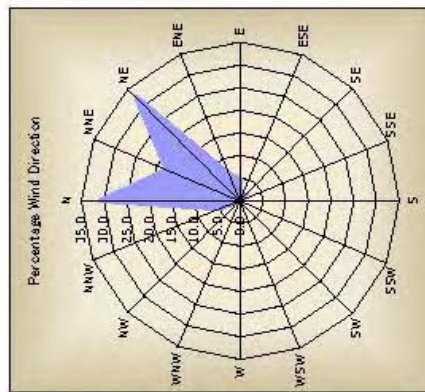
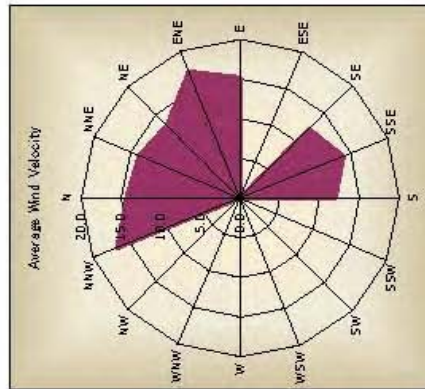






Nha Trang from Apr. to Sep.

Wind Direction	Frequency	Percentage Wind Direction	Average Wind Velocity
N	11	6.1	12.6
NNE	6	3.4	10.7
NE	22	12.3	10.3
ENE	7	3.9	10.0
E	16	8.9	11.0
ESE	10	5.6	10.6
SE	52	29.1	9.9
SSE	9	5.0	12.4
S	9	5.0	11.8
SSW	0	0.0	0.0
SW	2	1.1	16.5
WSW	3	1.7	15.3
W	16	8.9	14.1
WNW	3	1.7	12.3
NW	8	4.5	13.9
NNW	5	2.8	14.6



Nha Trang from Oct. to Mar.

Wind Direction	Frequency	Percentage Wind Direction	Average Wind Velocity
N	58	30.9	14.3
NNE	33	17.6	13.8
NE	61	32.4	13.0
ENE	12	6.4	17.2
E	9	4.8	15.2
ESE	0	0.0	0.0
SE	4	2.1	12.3
SSE	1	0.5	14.0
S	1	0.5	12.0
SSW	0	0.0	0.0
SW	0	0.0	0.0
WSW	0	0.0	0.0
W	0	0.0	0.0
WNW	0	0.0	0.0
NW	0	0.0	0.0
NNW	9	4.8	16.7

MONTHLY RAINFALL DATA AT TAM KY, QUANG NAM PROVINCE

Year	Jan	Feb	Mar	Apr	May	Jun	Jul	Aug	Sep	Oct	Nov	Dec	total
1979	40.8	19.8	1.7	4.9	234.7	369.4	43.3	52.1	114.7	385.1	338.8	123.8	1,729.1
1980	73.5	30.1	2.1	25.8	18.1	106.0	39.2	115.0	71.2	702.7	764.8	229.9	2,818.4
1981	124.2	25.8	6.2	18.0	72.4	102.5	62.5	25.9	227.9	1,299.6	682.5	533.1	3,180.6
1982	83.2	12.8	17.3	46.3	27.3	90.4	76.2	182.4	399.3	137.1	322.3	188.6	1,583.2
1983	102.9	1.8	9.4	82.4	7.8	255.7	4.2	93.2	91.9	1,085.4	557.7	180.5	2,472.9
1984	67.5	52.2	0.8	5.5	218.3	138.4	98.6	89.8	197.2	493.6	791.0	489.5	2,642.4
1985	55.3	3.1	18.7	93.7	83.9	226.3	45.1	24.8	423.0	748.0	1,107.9	435.1	3,264.9
1986	79.7	55.1	11.8	0.6	345.5	23.4	36.0	46.1	160.4	1,084.2	419.2	931.9	3,193.9
1987	47.0	72.8	113.9	7.7	13.8	55.7	93.1	87.1	363.1	187.2	709.8	134.3	1,885.5
1988	55.6	82.5	9.6	16.8	23.9	25.0	30.0	9.0	225.2	530.4	301.5	267.8	1,577.3
1989	140.3	8.7	82.1	8.8	421.6	94.7	233.3	75.4	139.7	206.5	264.5	101.5	1,777.1
1990	88.7	32.9	15.1	13.7	41.2	57.4	112.9	59.8	155.9	507.2	701.5	211.1	1,997.4
1991	87.7	128.7	321.6	381.5	33.9	13.9	20.2	266.5	165.5	622.3	212.7	122.3	2,376.8
1992	230.2	4.3	1.3	0.2	113.4	141.7	66.3	241.7	353.9	1,353.6	358.7	247.2	3,112.5
1993	79.8	20.5	10.4	74.9	25.9	109.3	0.5	39.4	233.7	1,126.1	659.1	393.5	2,773.1
1994	57.3	97.7	98.7	0.5	115.4	129.5	53.9	207.2	421.0	687.7	193.4	321.4	2,383.7
1995	23.6	59.2	26.1	0.6	58.8	38.0	45.5	19.7	397.4	1,300.4	843.5	192.9	3,005.7
1996	70.1	173.0	2.4	48.3	234.0	21.4	35.3	27.8	402.7	964.1	1,193.7	205.1	3,377.9
1997	86.7	22.0	10.8	37.0	29.9	106.6	217.4	145.5	963.3	357.1	210.8	296.9	2,484.0
1998	143.1	0.2	16.2	3.3	77.5	58.9	40.2	27.2	521.1	556.9	1,481.8	877.9	3,804.3
1999	271.6	78.4	113.4	242.6	42.6	89.8	78.0	14.4	238.1	514.7	1,163.3	1,534.1	4,381.0
2000	366.6	29.3	3.6	165.2	129.3	112.0	136.7	372.3	123.3	1,319.5	581.9	480.1	3,819.8
2001	109.1	81.8	89.3	1.2	222.0	103.2	100.3	156.7	105.0	861.6	468.5	560.9	2,859.6
2002	40.9	34.6	19.0	6.0	63.6	110.1	28.4	336.8	400.3	420.8	643.9	358.7	2,463.1
2003	33.6	85.2	41.2	15.7	45.9	104.4	25.7	86.2	228.7	817.0	287.8	300.0	2,071.4
2004	240.4	43.4	18.1	12.5	52.4	267.5	108.5	79.3	170.6	499.3	365.2	152.0	2,009.2
2005	39.0	18.3	72.8	5.5	15.8	74.9	226.2	179.3	296.9	1,026.7	575.2	628.2	3,158.8
Avg.	105.1	47.2	42.0	48.9	102.6	112.1	76.2	113.4	304.9	733.1	600.0	388.8	2,674.3

MONTHLY RAINFALL DATA AT QUANG NGAI, QUANG NGAI PROVINCE

Year	Jan	Feb	Mar	Apr	May	Jun	Jul	Aug	Sep	Oct	Nov	Dec	total
1979	54.4	21.2	5.7	8.9	381.1	360.3	78.6	267.4	88.5	537.2	428.5	135.6	2,367.4
1980	63.7	25.1	14.2	24.8	15.8	57.9	71.2	104.2	364.1	1,002.6	597.3	166.6	2,507.5
1981	108.5	14.2	4.0	8.2	92.1	201.5	30.2	87.4	281.5	1,127.5	717.9	377.9	3,050.9
1982	119.2	5.6	9.8	76.7	27.4	137.0	46.2	103.9	320.9	200.0	185.7	139.6	1,372.0
1983	61.1	1.5	4.6	2.4	19.0	172.4	13.1	63.9	107.6	871.0	535.8	191.5	2,043.9
1984	68.3	32.2	4.4	33.4	33.9	106.8	26.9	181.2	180.2	363.6	785.0	358.6	2,174.5
1985	83.9	2.2	17.6	27.5	161.8	248.0	40.7	55.8	360.8	442.8	1,177.8	208.4	2,827.3
1986	51.0	101.4	19.0	4.4	378.9	28.4	53.8	191.8	101.8	936.2	172.9	550.2	2,589.8
1987	29.5	38.7	10.5	28.9	0.7	149.5	169.3	124.1	260.8	185.0	1,207.4	119.6	2,324.0
1988	100.8	71.3	4.3	37.7	50.7	98.5	8.6	16.8	349.3	448.5	214.1	161.5	1,562.1
1989	101.8	15.7	145.1	3.2	324.7	64.7	207.2	194.7	198.5	150.1	153.6	143.9	1,703.2
1990	93.5	21.3	25.6	14.7	50.6	119.5	74.6	105.0	164.3	712.1	474.9	194.6	2,050.7
1991	56.6	62.0	229.1	121.7	4.7	47.1	67.5	191.6	194.5	627.1	110.3	179.2	1,891.4
1992	188.5	7.3	0.2	0.6	25.8	194.8	63.4	142.1	207.7	1,075.3	419.7	93.6	2,419.0
1993	20.0	11.9	24.8	39.2	45.3	13.6	24.3	26.1	198.3	558.8	611.2	315.9	1,889.4
1994	53.4	36.6	101.5	0.6	24.2	169.4	83.9	87.9	519.5	549.9	164.5	170.3	1,961.7
1995	49.4	84.7	57.8	0.9	67.0	51.0	31.8	6.1	396.3	1,186.1	634.2	207.4	2,772.7
1996	95.4	107.3	18.0	16.0	238.3	76.3	21.3	25.9	561.8	744.2	1,422.5	245.4	3,572.4
1997	122.3	24.5	5.5	33.7	47.2	5.9	213.6	171.6	787.8	319.9	211.8	211.6	2,155.4
1998	152.3	5.7	38.5	4.0	101.7	1.4	27.6	37.3	539.0	912.5	1,359.0	650.1	3,829.1
1999	243.4	69.5	114.7	323.6	111.7	49.5	78.5	38.8	216.5	730.8	772.8	1,197.8	3,947.6
2000	279.0	29.3	16.7	52.5	143.0	112.8	211.6	568.6	79.0	965.3	521.7	441.8	3,421.3
2001	64.7	32.1	115.9	9.8	200.8	111.3	38.1	210.1	142.3	883.6	291.1	483.1	2,582.9
2002	62.7	63.6	9.6	8.7	103.3	6.9	49.6	285.3	288.8	325.8	601.0	257.0	2,062.3
2003	15.1	13.7	40.5	20.3	60.1	9.1	61.6	184.1	513.8	1,133.0	408.9	179.8	2,640.0
2004	119.1	2.0	25.2	7.7	106.6	284.7	45.0	200.1	342.5	433.5	481.3	171.2	2,218.9
2005	11.8	34.4	83.9	2.5	0.7	119.7	84.6	148.6	289.0	970.0	732.0	667.6	3,144.8
Avg.	91.5	34.6	42.5	33.8	104.3	111.0	71.2	141.5	298.3	681.2	570.1	304.4	2,484.4

MONTHLY RAINFALL DATA AT QUY NHON, BINH DINH PROVINCE

Year	Jan	Feb	Mar	Apr	May	Jun	Jul	Aug	Sep	Oct	Nov	Dec	total
1979	64.0	9.4	5.9	4.7	50.1	142.3	7.4	11.2	124.6	504.5	330.6	173.5	1,428.2
1980	15.0	20.1	9.8	1.2	166.6	223.6	16.0	50.7	317.2	541.5	446.2	80.0	1,887.9
1981	64.9	15.3	11.9	11.0	76.3	208.1	74.6	35.2	192.5	884.2	869.4	241.9	2,685.3
1982	65.9	19.0	5.3	12.2	18.2	86.5	16.9	128.7	180.2	352.7	157.3	86.9	1,129.8
1983	49.4	-	5.1	-	7.0	95.3	18.8	113.4	228.8	533.1	393.6	148.9	1,593.4
1984	59.2	15.3	0.4	9.1	66.0	132.8	49.6	12.8	169.5	535.3	715.8	86.0	1,851.8
1985	69.7	0.5	16.3	76.6	302.8	43.2	73.5	2.2	343.5	405.4	719.8	292.9	2,346.4
1986	23.4	82.7	10.6	6.9	66.4	-	9.6	76.7	134.6	574.6	174.0	426.1	1,585.6
1987	40.7	45.3	0.8	6.0	9.4	47.3	5.6	38.4	193.2	249.1	1,143.2	59.8	1,838.8
1988	74.9	21.3	9.4	10.0	8.8	60.4	39.5	28.0	224.0	938.6	213.8	71.9	1,700.6
1989	41.5	21.6	177.7	0.7	78.1	75.4	68.8	80.6	154.1	277.2	295.3	105.4	1,376.4
1990	44.2	7.4	16.2	71.2	41.5	178.5	45.0	68.7	169.2	936.5	315.8	236.5	2,130.7
1991	50.6	38.6	81.3	101.2	33.2	79.5	15.0	22.4	353.0	691.8	398.3	117.1	1,982.0
1992	188.2	8.0	-	0.7	32.0	61.2	38.5	145.3	140.9	858.9	382.3	27.4	1,883.4
1993	10.7	2.9	17.8	16.7	19.9	6.3	8.7	77.6	294.2	922.3	379.6	476.9	2,233.6
1994	34.8	7.5	15.9	-	115.8	57.9	29.8	55.1	212.4	395.4	112.5	268.1	1,305.2
1995	21.4	16.9	56.1	4.4	97.8	2.8	52.6	44.2	406.7	375.4	303.3	107.0	1,488.6
1996	93.0	43.7	12.9	39.9	133.2	88.8	16.4	48.0	389.8	485.9	905.8	373.3	2,630.7
1997	28.7	19.5	1.4	75.4	80.0	55.4	13.5	15.1	396.2	468.9	285.3	120.7	1,560.1
1998	45.0	0.2	34.0	7.8	223.7	29.5	58.6	101.0	217.8	711.2	1,126.6	336.1	2,891.5
1999	71.1	90.8	6.1	124.0	45.4	5.4	7.8	3.4	165.7	697.3	574.1	698.3	2,489.4
2000	125.1	12.5	8.7	39.1	354.4	50.9	88.2	129.7	63.6	534.3	369.5	223.4	1,999.4
2001	25.2	16.4	95.5	23.4	87.6	20.8	28.5	114.5	123.7	500.0	218.1	86.0	1,339.7
2002	14.5	50.3	4.3	26.7	49.5	29.5	26.5	200.1	452.2	259.9	624.9	347.3	2,085.7
2003	19.1	1.2	7.5	0.5	129.8	177.7	35.6	120.9	140.6	903.4	312.5	113.6	1,962.4
2004	52.7	0.1	2.8	0.5	74.7	325.6	24.9	72.4	281.4	235.3	231.9	63.0	1,365.3
2005	3.3	12.2	136.0	19.9	49.0	27.0	13.3	20.4	362.4	914.3	487.7	592.1	2,637.6
Avg.	51.7	22.3	28.8	27.6	89.5	88.9	32.7	67.3	238.2	581.0	462.5	220.7	1,911.2

MONTHLY RAINFALL DATA AT NHA TRANG, KHANH HOA PROVINCE

Year	Jan	Feb	Mar	Apr	May	Jun	Jul	Aug	Sep	Oct	Nov	Dec	total
1979	4.3	1.8	0.3	24.4	132.1	74.4	15.0	16.2	93.1	163.2	254.4	158.4	937.6
1980	20.8	16.2	19.0	9.8	123.2	104.3	103.3	37.0	189.6	290.5	318.2	110.3	1,342.2
1981	33.1	8.1	15.0	23.8	116.1	65.4	12.0	28.8	380.1	703.9	880.4	284.8	2,551.5
1982	35.9	1.3	234.2	1.3	20.2	61.0	23.7	18.3	74.9	249.2	166.5	63.2	949.7
1983	9.2	0.2	0.0	1.2	54.4	46.7	13.9	199.6	121.3	480.8	235.7	42.5	1,205.5
1984	42.3	4.7	51.2	11.8	20.5	49.2	7.6	52.4	130.6	354.4	188.0	34.3	947.0
1985	34.9	30.5	12.9	43.9	142.6	42.1	50.9	6.0	242.8	124.3	542.1	145.4	1,418.4
1986	15.5	38.2	0.9	0.5	33.6	59.5	19.7	121.6	167.2	158.8	137.6	508.8	1,261.9
1987	14.4	1.9	7.8	16.2	12.4	52.2	52.8	8.1	187.2	125.0	549.2	32.5	1,059.7
1988	18.4	86.3	1.3	15.1	31.2	82.8	9.4	10.8	146.6	299.8	313.5	24.1	1,039.3
1989	20.4	8.8	24.6	19.5	30.9	43.4	99.4	101.0	203.2	294.0	238.7	14.2	1,098.1
1990	8.9	2.0	3.2	34.9	26.7	50.8	37.5	93.6	134.4	319.5	363.7	72.7	1,147.9
1991	19.7	22.4	255.2	120.7	38.4	32.9	28.6	20.0	182.9	338.0	102.6	27.3	1,188.7
1992	80.4	23.0	1.0	1.0	18.5	69.4	47.3	61.7	116.3	507.6	105.8	19.5	1,051.5
1993	2.9	0.3	6.3	4.1	52.2	11.6	23.9	85.3	72.9	356.3	317.1	237.9	1,170.8
1994	10.6	14.7	19.9	0.1	47.0	297.4	28.1	38.6	229.0	299.7	180.0	180.3	1,345.4
1995	11.7	2.4	13.8	37.2	60.8	12.1	109.9	46.3	91.0	336.1	208.9	225.2	1,155.4
1996	48.8	7.1	5.0	49.8	159.4	109.6	8.0	70.4	284.3	280.7	387.5	481.8	1,892.4
1997	9.3	14.9	0.0	23.9	34.0	10.2	57.5	89.1	302.5	207.4	174.2	81.3	1,004.3
1998	45.7	7.8	15.0	4.9	89.8	13.4	30.5	32.5	325.0	502.3	820.3	340.4	2,227.6
1999	75.9	18.4	7.8	86.4	17.7	44.2	36.1	44.8	80.0	440.7	538.4	432.5	1,822.9
2000	136.7	11.5	13.5	79.6	166.5	73.0	58.6	13.3	96.5	576.4	758.7	280.1	2,264.4
2001	111.9	0.0	186.4	73.5	96.6	12.5	3.3	62.3	355.5	287.4	156.0	64.3	1,409.7
2002	1.0	14.4	0.0	18.3	53.1	7.8	13.7	37.8	339.6	203.6	723.8	187.3	1,600.4
2003	6.6	7.5	5.0	0.4	238.6	23.1	51.5	24.7	92.7	532.9	317.8	145.1	1,445.9
2004	18.9	-	0.3	8.3	163.9	117.2	58.3	49.2	115.6	141.4	81.7	47.9	802.7
2005	5.9	0.4	38.4	3.4	0.2	32.3	41.9	10.8	258.4	487.3	355.0	566.7	1,800.7
Avg.	31.3	13.3	34.7	26.4	73.4	59.2	38.6	51.1	185.7	335.6	348.7	178.1	1,376.1

MONTHLY AVERAGE TEMPERATURE DATA AT TAM KY, QUANG NAM PROVINCE

Year	Jan	Feb	Mar	Apr	May	Jun	Jul	Aug	Sep	Oct	Nov	Dec	Average
1979	22.6	23.2	25.5	26.9	27.9	27.8	29.0	28.6	27.1	24.2	22.7	21.2	25.6
1980	21.8	21.8	25.4	26.7	28.3	27.8	29.0	28.1	25.9	25.5	23.6	22.1	25.5
1981	20.7	23.1	25.2	27.2	27.7	28.2	28.3	29.3	27.3	26.1	24.2	20.5	25.7
1982	20.3	22.4	24.5	25.4	28.1	28.2	28.8	28.6	26.7	26.0	24.8	20.7	25.4
1983	20.6	22.5	23.4	26.5	28.8	28.7	28.7	28.1	27.8	26.0	22.9	20.8	25.4
1984	19.4	21.1	23.3	27.4	27.1	28.8	28.1	28.1	26.8	25.3	23.5	21.6	25.0
1985	21.3	23.3	23.6	25.0	27.6	29.3	28.3	29.4	26.8	25.1	24.4	21.6	25.5
1986	20.3	22.3	23.5	26.8	27.7	29.1	29.1	28.2	27.1	25.4	23.2	21.7	25.4
1987	21.5	22.4	25.6	26.8	28.9	29.2	29.6	28.4	26.8	26.4	25.1	20.0	25.9
1988	22.2	23.3	23.9	25.5	29.2	28.9	29.2	29.5	27.8	25.3	22.6	21.0	25.7
1989	21.7	21.6	22.5	26.8	27.6	28.2	27.8	26.7	27.5	25.6	24.0	21.8	25.2
1990	22.2	23.2	24.0	27.5	27.2	28.7	28.5	28.6	27.4	25.9	24.4	21.8	25.8
1991	22.9	22.7	25.0	26.0	27.7	29.2	29.1	28.4	27.6	25.3	23.3	22.5	25.8
1992	20.1	22.6	24.8	27.0	28.5	28.5	28.2	27.9	27.4	24.3	22.6	22.5	25.4
1993	20.6	21.8	24.4	26.8	28.1	29.2	29.2	29.2	27.3	24.9	23.7	20.9	25.5
1994	21.6	24.0	23.0	27.1	28.6	28.8	29.2	28.8	27.0	24.6	23.9	23.7	25.9
1995	21.8	21.6	24.0	27.1	28.1	29.6	28.4	28.5	26.8	25.7	22.6	21.2	25.5
1996	21.1	20.6	24.3	25.2	26.9	28.1	28.9	28.8	27.2	25.5	24.2	21.5	25.2
1997	20.8	22.0	24.4	26.5	28.0	29.0	28.7	29.1	26.6	26.2	24.7	23.2	25.8
1998	23.6	24.2	26.0	27.8	29.1	30.2	29.5	28.8	26.9	25.7	24.7	22.4	26.6
1999	21.3	22.4	25.6	26.5	27.2	28.3	29.1	29.0	27.3	25.7	24.3	19.3	25.5
2000	22.0	21.8	23.9	26.8	27.7	28.2	28.5	28.5	27.0	25.7	23.4	22.5	25.5
2001	22.6	22.3	24.4	27.8	28.4	28.7	29.5	28.0	27.8	26.2	23.0	22.1	25.9
2002	21.8	22.5	24.8	27.1	28.9	29.7	30.3	27.8	26.9	25.7	24.7	23.5	26.1
2003	21.2	23.6	24.7	27.6	28.8	29.3	28.5	29.0	27.2	25.6	24.7	21.3	26.0
2004	21.7	21.5	24.3	26.7	28.5	29.0	28.4	28.9	27.2	24.7	24.0	21.7	25.6
2005	21.6	24.0	23.1	26.4	29.4	30.2	28.4	28.4	27.5	25.9	25.1	21.2	25.9
Avg.	21.5	22.5	24.3	26.7	28.1	28.8	28.8	28.5	27.1	25.5	23.9	21.6	25.6

MONTHLY AVERAGE TEMPERATURE DATA AT QUANG NGAI, QUANG NGAI PROVINCE

Year	Jan	Feb	Mar	Apr	May	Jun	Jul	Aug	Sep	Oct	Nov	Dec	Average
1979	22.7	23.3	25.7	27.4	28.1	28.1	28.7	28.6	27.4	24.4	23.2	21.6	25.8
1980	22.2	22.6	25.5	26.7	28.7	28.5	29.3	28.6	26.7	25.9	24.0	22.5	25.9
1981	21.0	23.3	25.4	27.5	28.1	27.9	28.6	29.2	27.9	26.4	24.7	20.9	25.9
1982	20.7	22.8	24.9	25.8	28.2	28.6	28.9	29.1	27.1	26.4	25.2	21.3	25.8
1983	21.4	23.2	24.1	26.3	28.9	28.9	29.1	28.7	28.3	26.3	23.4	21.3	25.8
1984	20.0	21.7	23.7	27.5	28.0	29.2	28.4	28.0	26.8	25.9	23.8	22.1	25.4
1985	21.8	24.0	24.3	25.7	28.0	29.0	28.3	29.2	27.0	25.7	24.6	22.2	25.8
1986	20.9	22.4	23.4	27.0	28.3	29.1	28.8	28.1	27.1	25.8	23.6	22.3	25.6
1987	22.0	22.8	25.7	27.1	29.1	29.5	29.3	28.4	27.3	26.6	25.4	20.8	26.2
1988	22.6	23.6	24.3	26.1	29.0	29.0	29.2	29.2	27.5	25.6	23.1	21.3	25.9
1989	22.1	21.5	22.9	26.8	28.1	28.3	28.4	28.1	27.4	25.9	24.2	21.9	25.5
1990	22.6	23.6	24.5	27.8	27.9	28.8	28.7	29.0	27.7	26.0	24.7	22.0	26.1
1991	23.2	22.9	25.1	26.3	28.4	29.1	28.8	28.3	27.7	25.5	23.7	22.8	26.0
1992	20.7	23.2	25.1	26.9	28.9	28.7	28.2	27.9	27.7	24.8	22.8	23.0	25.7
1993	21.2	22.3	24.6	26.8	28.2	29.5	29.7	29.5	27.7	25.3	24.2	21.6	25.9
1994	21.9	24.3	23.4	27.0	29.0	29.0	29.4	29.4	27.4	25.0	24.3	23.8	26.2
1995	22.2	22.4	24.2	27.2	28.5	29.6	28.9	29.2	27.3	26.1	23.4	21.8	25.9
1996	21.7	21.1	24.9	26.0	27.7	28.4	29.1	29.1	27.3	26.1	24.7	22.3	25.7
1997	21.6	22.7	24.8	26.9	28.5	29.7	29.1	29.3	27.1	26.6	25.0	23.8	26.3
1998	24.1	24.7	26.2	28.1	29.2	30.4	29.7	29.4	27.4	26.0	25.0	23.0	26.9
1999	22.1	23.0	25.8	27.1	27.6	28.6	29.5	28.9	27.5	25.9	24.8	20.3	25.9
2000	22.6	22.5	24.6	27.1	28.1	28.4	28.5	28.4	27.2	26.0	24.0	22.9	25.9
2001	23.1	23.1	25.2	27.9	28.4	28.7	29.7	28.3	28.2	26.5	23.6	22.7	26.3
2002	22.3	22.9	25.1	27.4	29.3	29.8	30.3	28.0	27.0	26.2	24.9	23.9	26.4
2003	21.7	24.2	25.0	27.7	29.0	29.6	29.0	28.9	27.3	25.8	24.9	21.9	26.3
2004	22.2	22.1	24.7	27.3	29.0	28.9	28.3	28.6	27.5	25.1	24.5	21.9	25.8
2005	21.9	24.1	23.4	26.6	29.5	30.2	28.6	28.7	27.8	26.2	25.3	21.6	26.2
Avg.	21.9	23.0	24.7	27.0	28.5	29.0	29.0	28.7	27.4	25.9	24.3	22.1	26.0