

4. 討議議事録 (M/D)

4-1 基本設計調査討議議事録

Minutes of Discussions
on the Basic Design Study on the Project for Supply of Equipment
for Interpretative Display and Presentation of the Cultural Heritage of Sigiriya
at the New Sigiriya Museum
in the Democratic Socialist Republic of Sri Lanka

In response to the request from the Government of the Democratic Socialist Republic of Sri Lanka, the Government of Japan decided to conduct a Basic Design Study on "The Project for Supply of Equipment for Interpretative Display and Presentation of the Cultural Heritage of Sigiriya at the New Sigiriya Museum" (hereinafter referred to as "the Project") and entrusted the study to the Japan International Cooperation Agency (hereinafter referred to as "JICA").

JICA sent to the Democratic Socialist Republic of Sri Lanka the Basic Design Study Team (hereinafter referred to as "the Team"), headed by Mr. Hideki SAKATA, the Deputy Resident Representative of the JICA Sri Lanka Office, and is scheduled to stay in the country from January 11 to February 14, 2007.

The Team held discussions with the officials concerned of the Government of the Democratic Socialist Republic of Sri Lanka and conducted the field survey at the study areas.

In the course of the discussions and field survey, both sides have confirmed the main items described in the attached sheets. The Team will proceed to further works and prepare the Basic Design Study Report.

Colombo, January 19, 2007



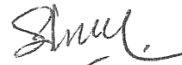
Hideki SAKATA
Leader
Basic Design Study Team
Japan International Cooperation Agency



G.L.W. SAMARASINGHE
Secretary
Ministry of Cultural Affairs and National Heritage
Secretary,
Ministry of Cultural Affairs &
National Heritage
3rd Floor "Sethsiripaya", Battaramulla.



M.P.D.K. MAPA PATHIRANA
Director-Japan Division
Department of External Resources
Ministry of Finance and Planning



W.H. WIJAYAPALA
Director General
Central Cultural Fund
Ministry of Cultural Affairs and National Heritage

ATTACHMENT

1. Objective of the Project

The objective of the Project is to improve the exhibit of Sigiriya's heritage through the procurement and installation of equipment at the New Sigiriya Museum (hereinafter referred to as "the New Museum").

2. Project Site

The site of the Project is the New Museum, as shown in Annex-1.

3. Responsible and Implementing Organization

The responsible organization is Ministry of Cultural Affairs and National Heritage. The implementing organization is the Central Cultural Fund (hereinafter referred to as "CCF") on behalf of the Government of Sri Lanka. The organization charts of the above organizations are attached as Annex-2.

The Expert Committee for the New Museum, appointed by the Ministry of Cultural Affairs and National Heritage, technically consults on archeological and artistic issues, such as selecting display items and designing the display.

4. Items requested by the Government of the Democratic Socialist Republic of Sri Lanka

After discussions with the Team, the equipment described in Annex-3 (hereinafter referred to as "the Equipment") which is the finalized list of items, were requested by the Sri Lankan side. JICA will assess the appropriateness of the request and will recommend to the Government of Japan for approval.

5. Japan's Grant Aid Scheme

- (1) The Sri Lankan side understands the Japan's Grant Aid scheme and the necessary measures to be taken by the Government of Democratic Socialist Republic of Sri Lanka, as explained by the Team and as described in Annex-4.
- (2) The Sri Lankan side will take necessary measures, as described in Annex-5, for smooth implementation of the Project, as a condition for the Japan's Grant Aid to be implemented.

6. Schedule of the Study

- (1) The technical members of the Team will proceed to further study in the Democratic Socialist Republic of Sri Lanka until February 14, 2007.
- (2) JICA will analyze the results of the field study and prepare the draft report in English and dispatch a mission to the Democratic Socialist Republic of Sri Lanka in order to explain its contents around the beginning of May, 2007. This is subject to change according to the analysis in Japan.
- (3) In case that the contents of the report is accepted in principle by the Government of



the Democratic Socialist Republic of Sri Lanka, JICA will complete the final report and send it to the Government of the Democratic Socialist Republic of Sri Lanka by the end of August, 2007.

7. Other Relevant Issues

- (1) The Sri Lankan side will complete all construction work of the New Museum by March, 2008. In case of change, the Sri Lankan side informs to the Japanese side.
- (2) The Sri Lankan side strongly requests that the Japanese Grant Aid Project cover all requested items deemed necessary based on the Sri Lankan side's display concept. The Japanese side has informed, however, that Japan's Grant Aid Project may not be able to cover all the requests, and the Sri Lankan side understands the need to optimize the components of the Equipment List from the viewpoint of technical and financial viability, sustainability and cost-effectiveness. Both sides agree to find the best way thorough discussions for implementing this Project, with necessary compromise on both sides.
- (3) Both sides confirm that the interior finishing work and furniture will be designed and procured by Sri Lankan side based on the total design concept. The Japanese side will give necessary advice to Sri Lankan side.
- (4) The Sri Lankan side requests technical assistance as mentioned below, which may not be covered by Japan's Grant Aid scheme, and understands that a separate official request by the Sri Lankan side to the Japanese side through the Embassy of Japan may be necessary for such technical assistance. The Japanese side will convey the importance of the following requests to the relevant authorities in Japan.
 - Technical /artistic direction for total coordination of galleries and/or other display spaces during the interior finishing work and the procurement and installation of the furniture.
 - Technical /artistic direction for production of video program and/or software contents.
- (5) The Sri Lankan side will allocate sufficient budget and qualified staff to properly and effectively operate and maintain the Equipment. The Sri Lanka side explained that the budget and staff to operate the New Museum is in preparation.
- (6) The Sri Lankan side shall ensure prompt tax exemption and customs clearance of the products at the terminal of disembarkation.
- (7) The Sri Lankan side shall ensure exemption of VAT concerning local procurement of goods and services under the Project by a Japanese supplier.
- (8) The Sri Lankan side understands to stick national flag of Japan and/or ODA symbol mark sticker is required on all the Equipment procured by the Japanese Grant Aid.
- (9) The Sri Lankan side expressed the intent to put a commemorative plate in three official languages and Japanese at the main entrance and exit of the display area of the New Museum.
- (10) The Sri Lankan side shall submit answers of the questionnaire given by the Team



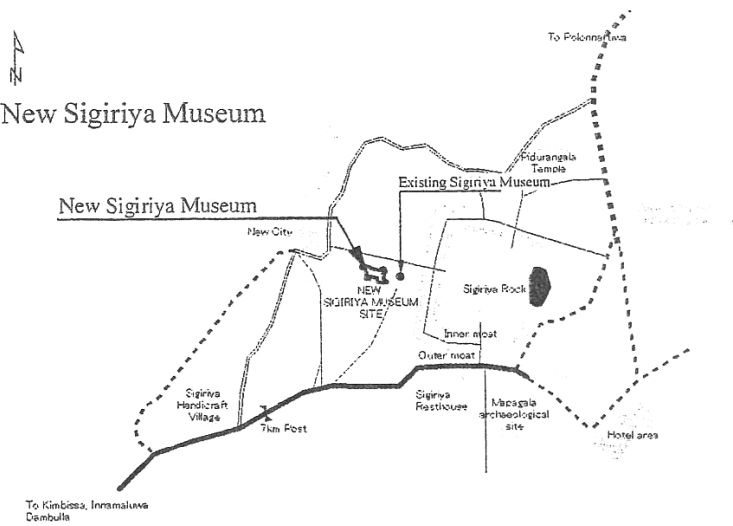
before January 29, 2007.

(End)

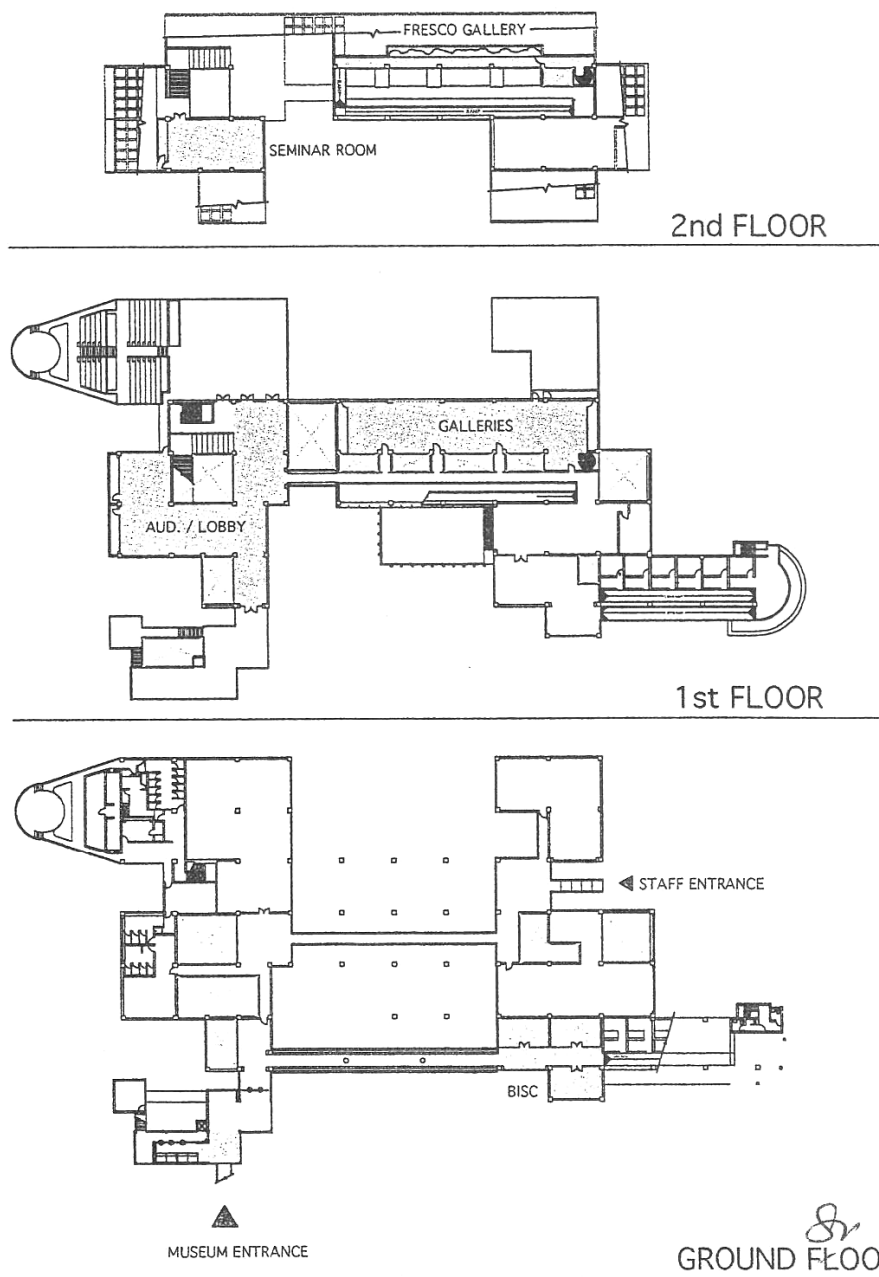
- Annex – 1 Site of the Project
- Annex – 2 Organization Charts
Annex 2- 1 Ministry of Cultural Affairs and National Heritage
Annex 2- 2 Central Cultural Fund
- Annex – 3 Requested Equipment List
- Annex – 4 Japan’s Grant Aid Scheme
- Annex – 5 Major undertakings to be taken by each Government



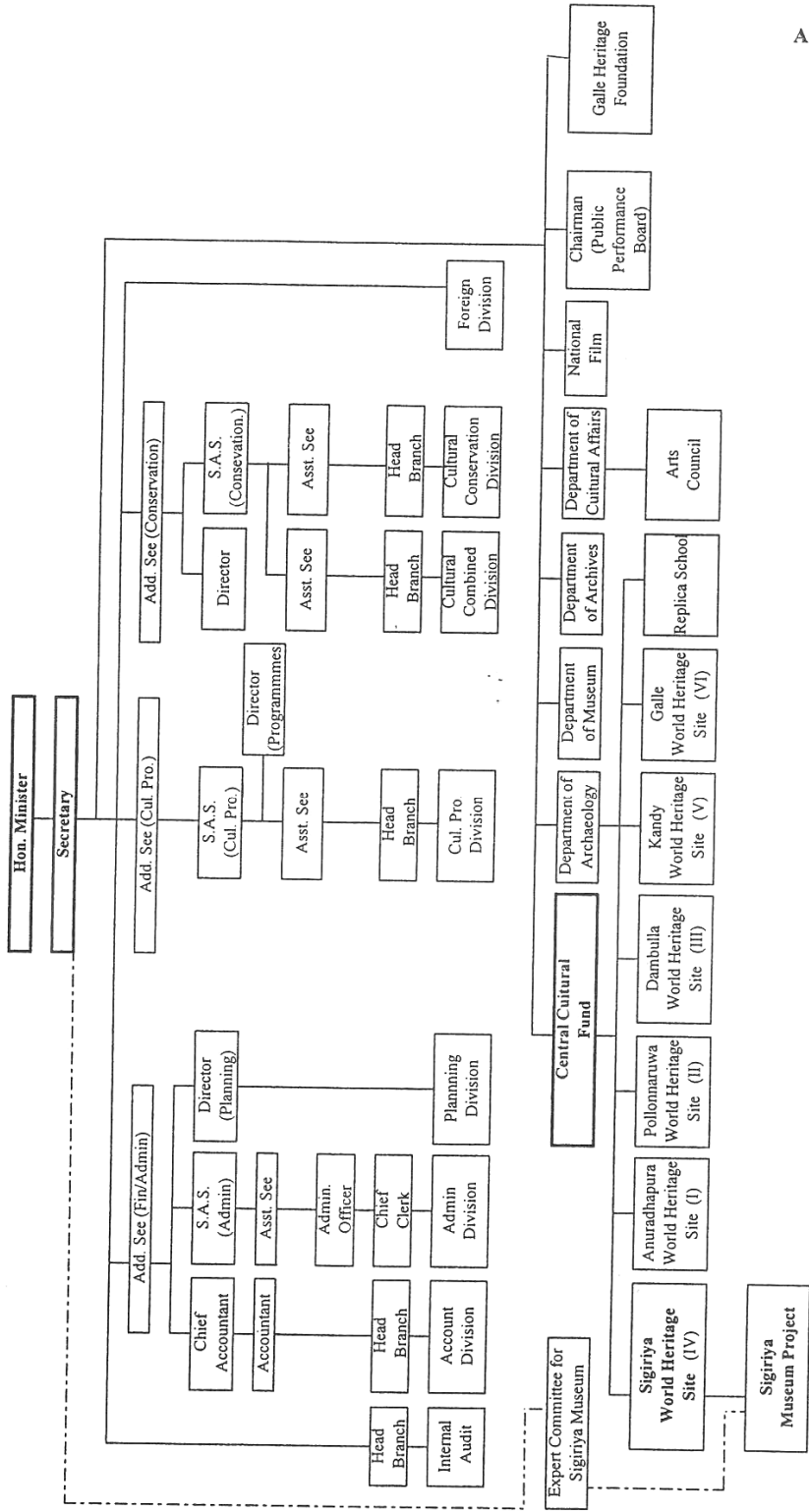
Site Location of the New Sigiriya Museum



Floor Plan of the New Sigiriya Museum



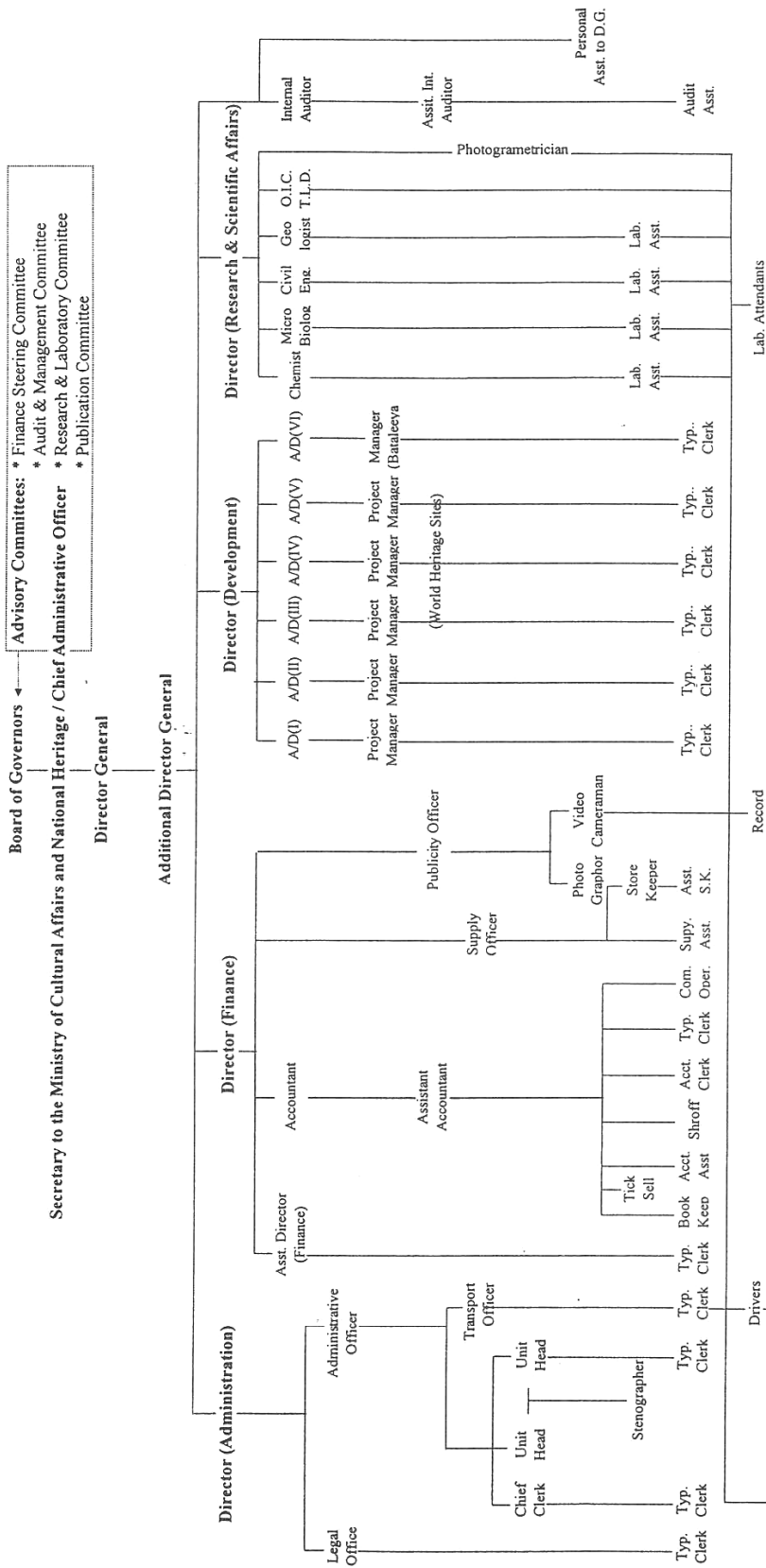
Ministry of Cultural Affairs and National Heritage



Annex 2-1

[Handwritten signature]

Organization Chart of Central Cultural Fund



Annex 2-2

Abbreviations: A/D - Assistant Director, O.I.C.T.L.D. - Officer in charge Test Laboratory Dating, Lab. Asst. - Laboratory Assistant, Typ. Clerk - Typist Clerk, Tick. Sell - Ticket Seller, Acct. Clerk - Account Clerk, Com. Oper. - Computer Operator, Asst. S.K. - Assistant Store Keeper, Aud. Asst. - Audit Assistant

[Handwritten signatures]

Requested Equipment				
Requested item		Quantity	Location	Priority
1. Display equipment				
1-1	Glass case (floor mounted)	1	Lobby	A
	Glass display cases (floor mounted tabletop height)	3	Gallery 1	
	Glass display cases (floor mounted tabletop height)	3	Gallery 2	
	Glass display cases (floor mounted tabletop height)	5	Gallery 3	
	Glass display cases (floor mounted tabletop height)	5	Gallery 4	
	Glass display cases (floor mounted tabletop height)	5	Gallery 5	
	TOTAL	22		
1-2	Display shelves/stands (floor mounted tabletop height)	3	Gallery 1	A
	Display shelves/stands (floor mounted tabletop height)	5	Gallery 2	
	Display shelves/stands (floor mounted tabletop height)	4	Gallery 3	
	Display shelves/stands (floor mounted tabletop height)	4	Gallery 4	
	Display shelves/stands (floor mounted tabletop height)	4	Gallery 5	
	TOTAL	20		
1-3	Artifact display kits	24	Gallery 1	A
	Artifact display kits	30	Gallery 2	
	Artifact display kits	30	Gallery 3	
	Artifact display kits	30	Gallery 4	
	Artifact display kits	20	Gallery 5	
	TOTAL	134		
2. Information equipment				
2-1	Museum information/directory board	1	Lobby	A
	Museum information/directory board	1	Gallery 1	
	Museum information/directory board	1	Gallery 2	
	Museum information/directory board	1	Gallery 3	
	Museum information/directory board	1	Gallery 4	
	Museum information/directory board	1	Gallery 5	
	Museum information/directory board	1	Fresco pocket	
	TOTAL	7		
2-2	Curved graphic panel (floor to ceiling height)	1	Auditorium	A
	Flat graphic panel (floor to ceiling height)	3	Auditorium	
	Flat graphic panel (floor to ceiling height)	6	Gallery 1	
	Flat graphic panel (floor to ceiling height)	6	Gallery 2	
	Flat graphic panel (floor to ceiling height)	6	Gallery 3	
	Flat graphic panel (floor to ceiling height)	6	Gallery 4	
	Flat graphic panel (floor to ceiling height)	6	Gallery 5	
	Flat graphic panel (floor to ceiling height)	3	Seminar room	
	Flat information panel (floor to ceiling height)	1	Fresco pocket	
	TOTAL	38		
2-3	Caption boards	30	Auditorium	B
	Caption boards	1	Lobby	
	Caption boards	90	Gallery 1	
	Caption boards	90	Gallery 2	
	Caption boards	90	Gallery 3	
	Caption boards	90	Gallery 4	
	Caption boards	90	Gallery 5	
	Caption boards	10	Seminar room	
	Caption boards	10	Fresco pocket	
	Caption boards	25	BISC	
	TOTAL	526		
2-4	Flat embossed glass panel (floor to ceiling height)	1	Lobby	A
2-5	Replica of Ibbunkatuwa Megalithic tomb	1	Gallery 1	A
2-6	Replica of Potana Man skeleton	1	Gallery 1	A
2-7	Replica of Alakolawewa iron smelting furnace	1	Gallery 1	A
2-8	Detail architectural model of Sigiriva complex	1	Gallery 3	A
2-9	Glass floor to cover architectural model	1	Gallery 3	A
2-10	Replica of Mirror Wall full size scale	1	Gallery 4	A

BISC: Books and information Publication Display Sales Center

Annex-3, 1

Requested Equipment				
	Requested item	Quantity	Location	Priority
2-11	Working model of water garden	1	Undecided	A
2-12	Replica of Fresco Pocket	1	Fresco pocket	A
2-13	Flat panel LCD display mounted overhead	6	Auditorium	A
2-14	Large image display, high resolution LCD projector set	1	Gallery 3	A
2-15	Audio presentation equipment	1	Gallery 3	A
2-16	Audio presentation equipment	1	Gallery 4	A
2-17	Electronic interactive touch system/information panel	1	Gallery 1	A
	Electronic interactive touch system/information panel	1	Gallery 2	
	Electronic interactive touch system/information panel	1	Gallery 3	
	Electronic interactive touch system/information panel	1	Gallery 4	
	Electronic interactive touch system/information panel	1	Gallery 5	
	TOTAL	5		
3. Lighting fixtures				
3-1	Graphic panel spotlights (ceiling mounted)	9	Auditorium	A
	Caption board illumination lights	10	Auditorium	
	Spotlights for centrepiece display (ceiling mounted)	4	Lobby	
	Caption board illumination lights	2	Lobby	
	Information/directory board illumination lights	2	Lobby	
	Graphic panel spotlights (ceiling mounted)	20	Gallery 1	
	Caption board illumination lights	30	Gallery 1	
	Graphic panel spotlights (ceiling mounted)	25	Gallery 2	
	Caption board illumination lights	30	Gallery 2	
	Graphic panel spotlights (ceiling mounted)	20	Gallery 3	
	Caption board illumination lights	30	Gallery 3	
	Graphic panel spotlights (ceiling mounted)	20	Gallery 4	
	Caption board illumination lights	30	Gallery 4	
	Graphic panel spotlights (ceiling mounted)	30	Gallery 5	
	Caption board illumination lights	30	Gallery 5	
	Graphic panel spotlights (ceiling mounted)	9	Seminar room	
	Caption board illumination lights	10	Seminar room	
	Information panel spotlights (ceiling mounted)	2	Fresco pocket	
	Caption board illumination lights	10	Fresco pocket	
	Fresco gallery special effects illumination lights	10	Fresco pocket	
	Caption board illumination lights	30	BISC	
	TOTAL	363		
4. Educational equipment				
4-1	Computer set	4	Seminar room	A
4-2	Server and network system	1	Seminar room	
4-3	Projector	1	Seminar room	
4-4	Screen	1	Seminar room	
5. Management equipment				
5-1	Security monitoring facilities (cameras/alarm system)	1	Entry lobby	B
	Security monitoring facilities (cameras/alarm system)	1	Auditorium	
	Security monitoring facilities (cameras/alarm system)	1	Lobby	
	Security monitoring facilities (cameras/alarm system)	1	Gallery 1	
	Security monitoring facilities (cameras/alarm system)	1	Gallery 2	
	Security monitoring facilities (cameras/alarm system)	1	Gallery 3	
	Security monitoring facilities (cameras/alarm system)	1	Gallery 4	
	Security monitoring facilities (cameras/alarm system)	1	Gallery 5	
	Security monitoring facilities (cameras/alarm system)	1	Seminar room	
	Security monitoring facilities (cameras/alarm system)	1	Fresco pocket	
	Security monitoring facilities (cameras/alarm system)	1	BISC	
	TOTAL	11		
5-2	Ticket sales counter	2	Entry lobby	A
5-3	Ticket collecting/counting unit	2	Entry lobby	

BISC: Books and information Publication Display Sales Center

