

***Department of Social Development
and Welfare
Ministry of Social Development
and Human Security***

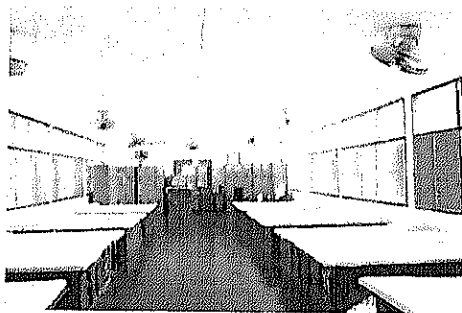
3

Background

Kredtrakarn Shelter

- Established on 2 July 1960; began to formally receive trafficking victims around 4 years ago.
- Provide assistance to victims of trafficking, non-victims of trafficking, homeless, traumatized, and those with family/social problems who are both Thai and non-Thai women/girls/female children referred by Immigration Detention Centers, local police stations, non-governmental organizations, and individual citizens.

4



6 Dormitories in Baan Kredtrakarn

5

Intake/ Reception

Cases are reported from:

- 99 DSDW shelters
- 75 Provincial Social Welfare and Human Security Offices
- Police Station, Immigration Detention Centre or Check Point, Labour Welfare and Protection Office
- NGO
- People in general



6



Rescue and Protection Step

- Sending a social worker and translator to help identification and to provide protection assistance.
- Foreign victims will not be put in jail, on the contrary they will be referred to DSDW shelters according to the Measure on Prevention and Suppression on Trafficking in Women and Children Act of 1997



7

Protection and Services Provision



8



Legal Assistance

9

Prepare case for prosecution and judicial procedure

- Check whether the victims are ready for prosecution and judicial procedure
- It needs on their consent to involve in the process
- There is a need for prepare the case before and after judicial process
- Social worker / caretaker will accompany the case for the whole process

10

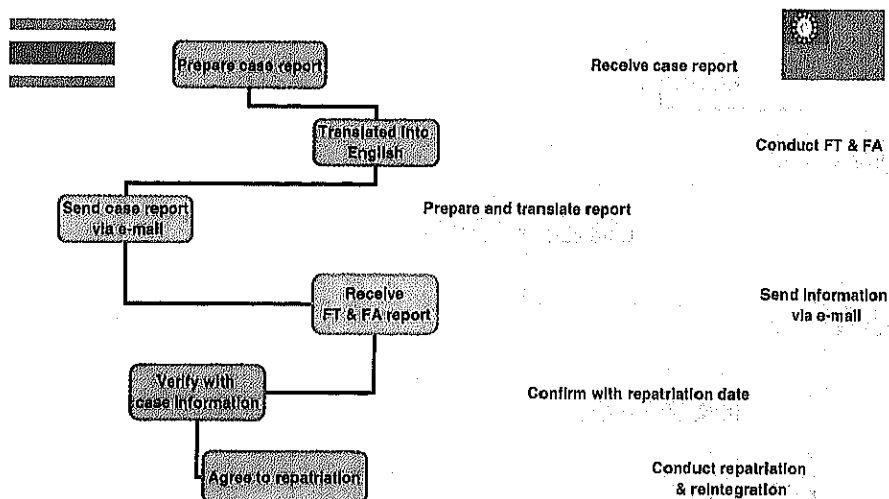
Child friendly judicial procedures



- According to the Criminal Procedure Amendment Act of 1999
- To prevent young children from unnecessary trauma during the investigation and testimony
- Children can give videotaped statement and provide evidence to the court via video link
- Social worker, psychologist or a person requested to join in the investigation or trial
- Authorized officers are requested to present at the investigation room at the same time.
- Early deposition if the offender has not yet been identified or in a case of difficulties for the victim or witness to attend the trial

11

Referral information for family tracing and assessment



12



Family Tracing and Assessment Repatriation and Reintegration



13

Current Caseload Under Kredtrakarn Shelter (February 28 , 2007)

• Myanmar	:	116
• Lao	:	140
• Vietnamese	:	3
• Cambodian	:	21
• Thai	:	111
Total	:	391

14

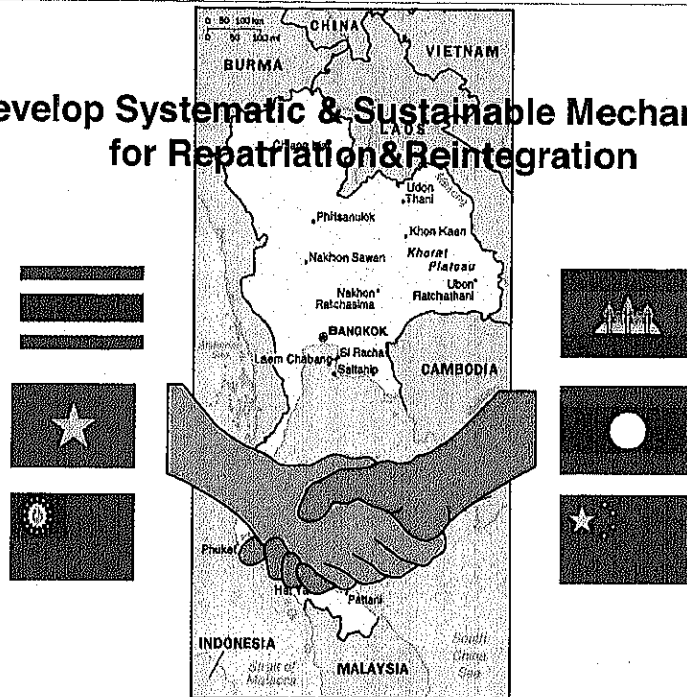
Preventive Measure



- Anti – Prostitution Campaign
- Thai Women Network in Europe, Japan, Australia

15

Develop Systematic & Sustainable Mechanisms for Repatriation & Reintegration



16

Mekong Regional Indigenous Child Rights Home (MRICRH)



Mekong Regional Indigenous Child Rights Home The Chiang Rai Social Development Center, Unit 12



Mekong Regional Indigenous Child Rights Home

- **Location :** Mae Chan, Mae Salong, Chiang Rai, Thailand
- **Status :** Independent NGO. Operates in conjunction with the gov't. Social Development Centre in Chiang Rai, Joint Project and Staff of GO's & NGO's, (SDC & DEPDC)
- **Support :** Oxfam Novib (the Netherlands)
- **Establish :** 2002
- **Areas:** Greater Mekong Sub-region and beyond
- **MRIORH:** Safe Shelter for rescued cross border trafficked women & children in the Mekong sub-region.

9

Mekong Regional Indigenous Child Rights Home

◆ 3 Main Activities

- Half Way Home
- Border Child Protection Rights
- Child Helpline

Mekong Regional Indigenous Child Rights Home

◆ **Target Group:** Refuge for all indigenous children & victims throughout the Mekong.

- Child Abuse
- Sexual Abuse
- Physical Abuse
- Emotional Abuse
- Neglect
- Exploitation
- Child Labor
- Child Prostitution
- Trafficking

5

Mekong Regional Indigenous Child Rights Home

◆ **Project Aims:**

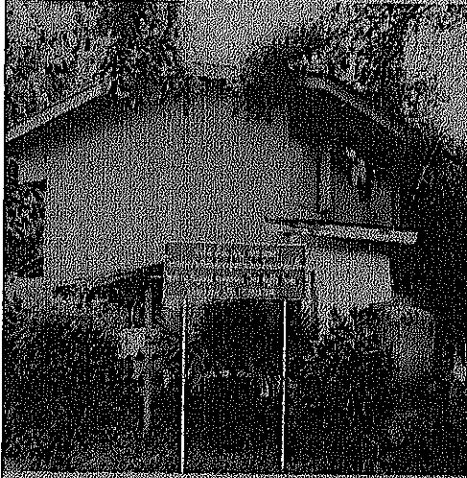
- ◆ Performs social services & advocates for the rights and protection of children & women.
- Safe Shelter
- Case-studies
- Vocational skill training
- Medical assistance
- Counselling
- Reintegration
- Repatriation
- Follow-ups
- Networks locally, internationally & throughout the Mekong.
- Encourage & empower communities to care for children's needs.
- Stand against networks that traffic women & children.

6

Mekong Regional Indigenous Child Rights Home

◆ Half Way Home (HWH)

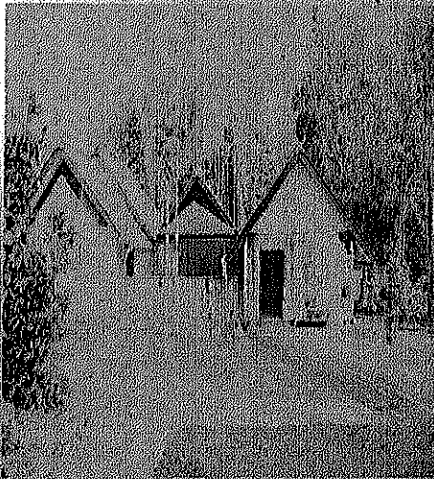
◆ Safe Shelter



- Qualified staff.
- A safe place for rehabilitation.
- A place to learn life skills.
- Health development.
- Education.

Mekong Regional Indigenous Child Rights Home

★ Border Child Protection Rights (BCRP)



- Education
- Life skill development
- Short term vocational training

Mekong Regional Indigenous Child Rights Home

Child Helpline

- 24 Hour emergency service
- Trained counselors
- Case follow up and investigation
- Rescue and referral

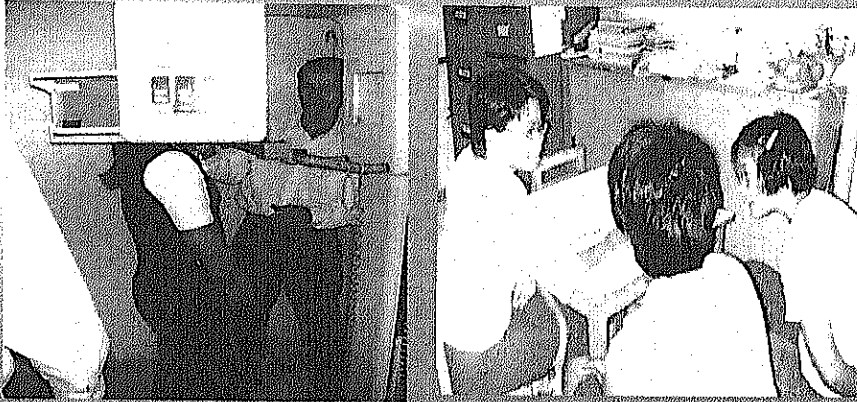
9

Rehabilitation Activities

10

Mekong Regional Indigenous Child Rights Home

★ Rehabilitation



- Health Care and Medical Treatment.
- Counselling by Psychologists and Social Workers.

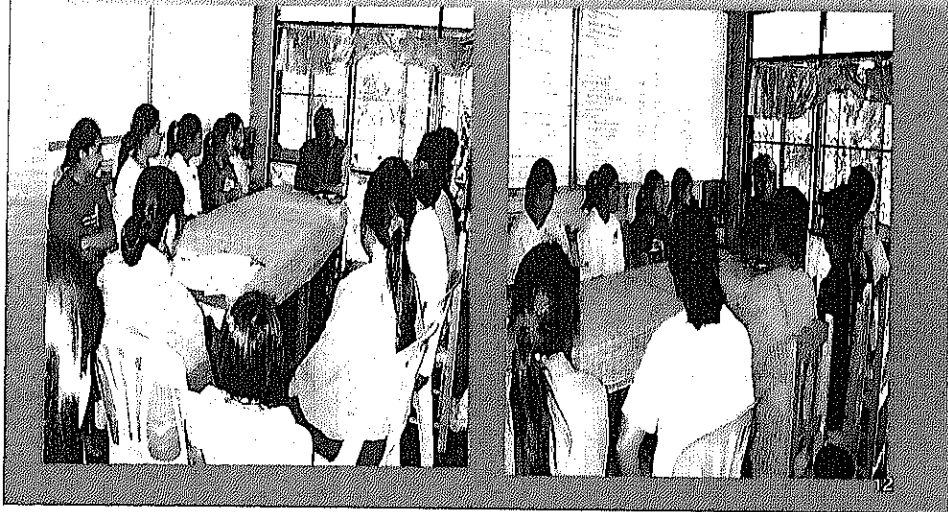
Mekong Regional Indigenous Child Rights Home

◆ Psychologist



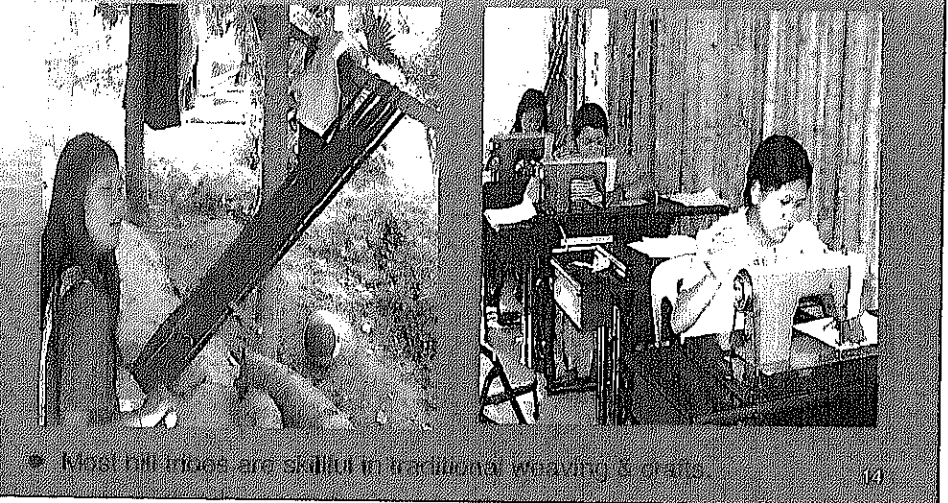
Mekong Regional Indigenous Child Rights Home

◆ Psychologist



Mekong Regional Indigenous Child Rights Home

★ Vocational Training Handicrafts



Mekong Regional Indigenous Child Rights Home

★ Vocational Skill Training
Agriculture/Gardening



•To teach self-sufficiency

15

Mekong Regional Indigenous Child Rights Home

★ Vocational Skill Training
Culinary Skills



•Learning to cook food & sweets.

16