

### 3.4 Interchange Plan

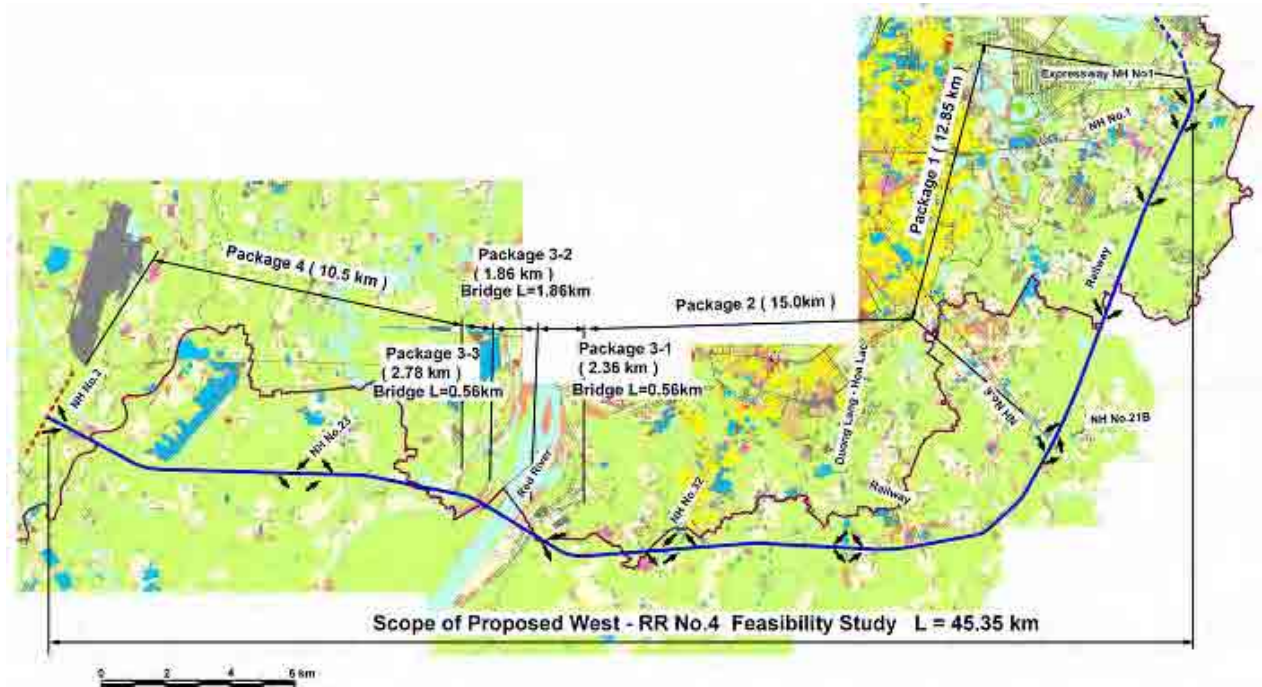
The types of road intersection are influenced by many factors, the most important of which are the following:

- (i) Road classification.
- (ii) Traffic volume.
- (iii) Design speed.
- (iv) Adjacent land use.
- (v) Environmental considerations.
- (vi) Economic considerations.
- (vii) Topography.
- (viii) Relationship to other features of the highway system.

RR4 West Section will include six interchanges at intersection points whose designs are illustrated in figures 3.4.2 to 3.4.7.

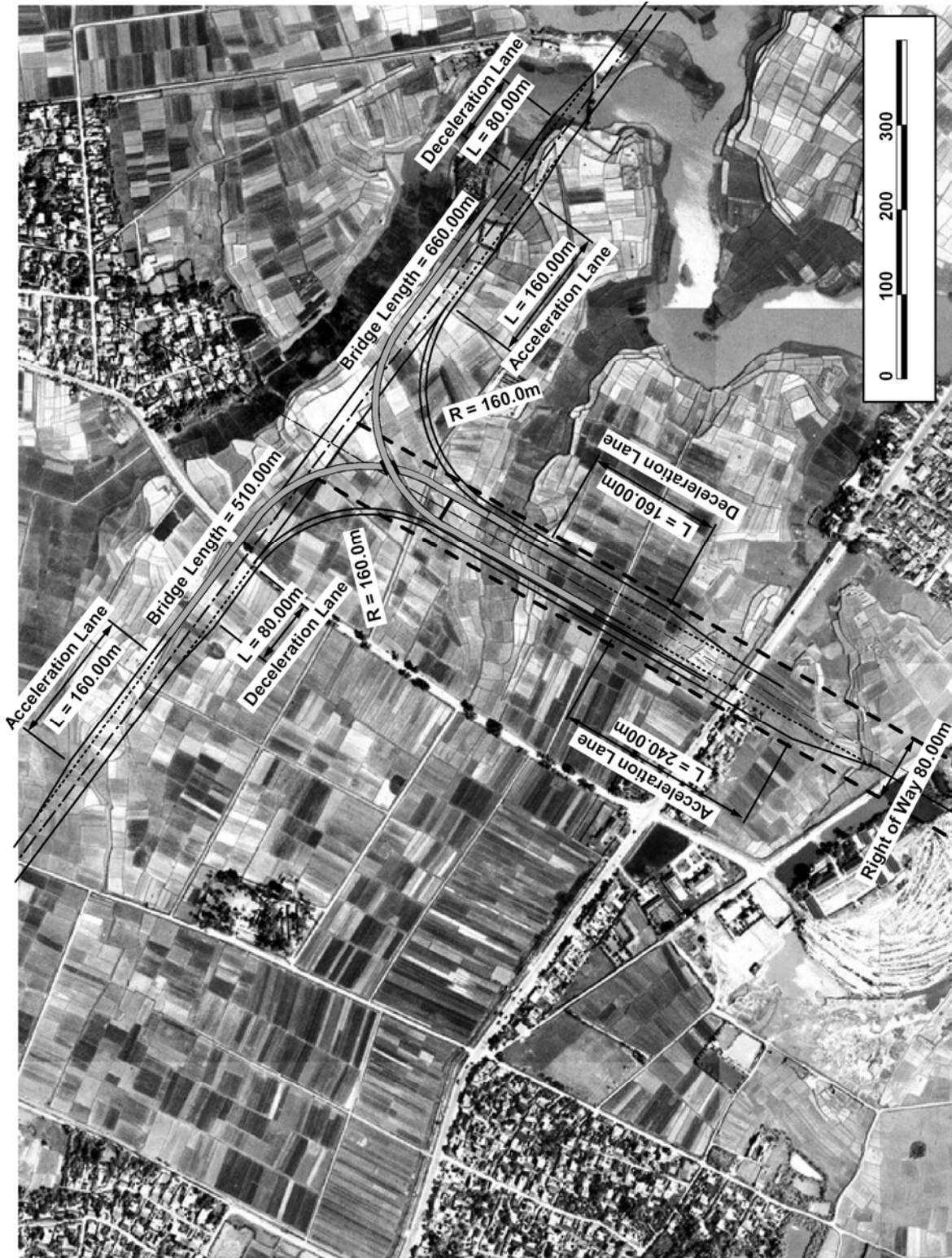
- (i) NH2
- (ii) NH23
- (iii) NH32
- (iv) Duong Luong-Hoa Lac
- (v) NH6
- (vi) NH1 Expressway

**Figure 3.4.1 Location of Interchanges Along RR4 West**



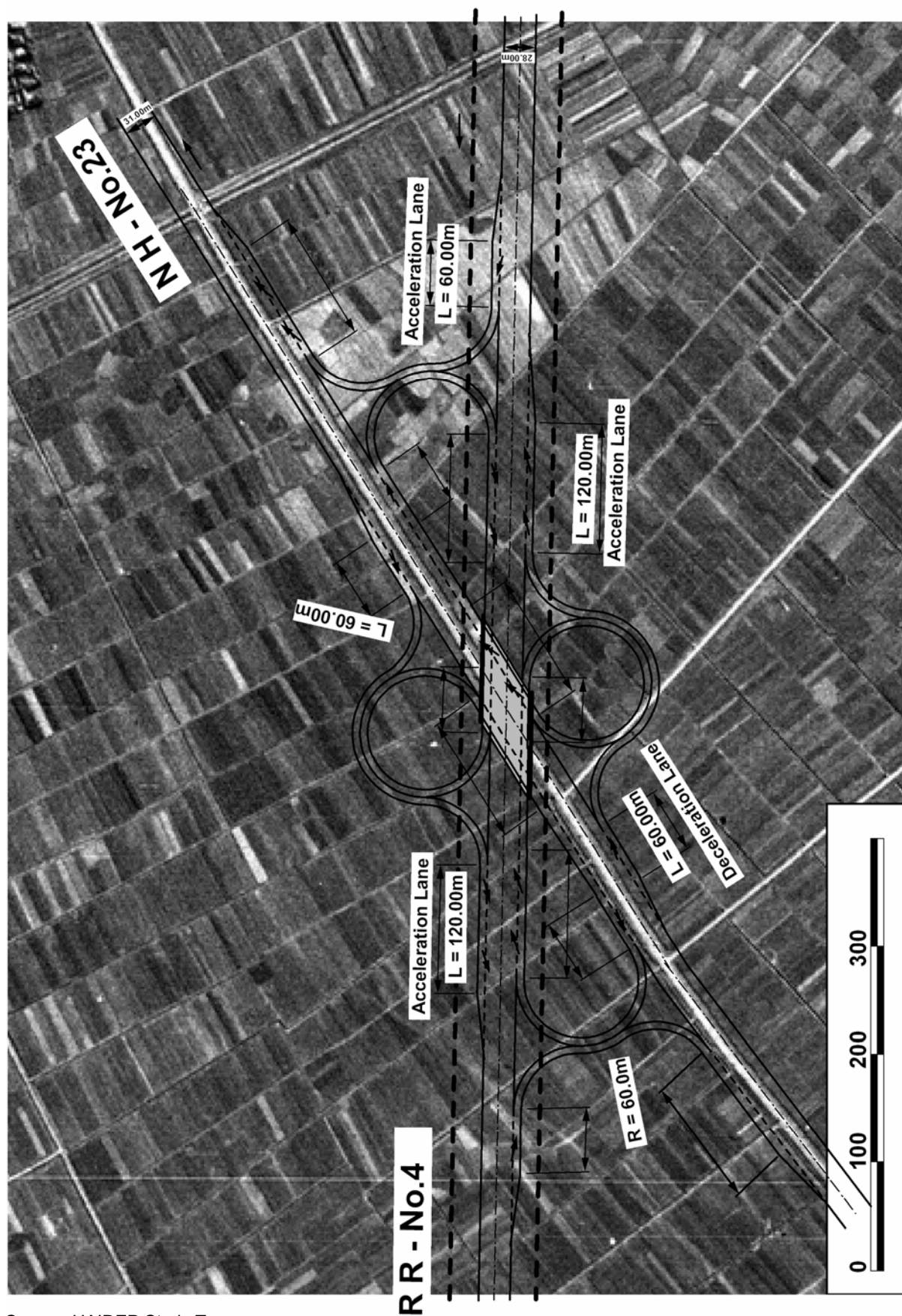
Source: HAIDEP Study Team

Figure 3.4.2 Intersection Plan for NH2 and RR4



Source: HAIDEP Study Team

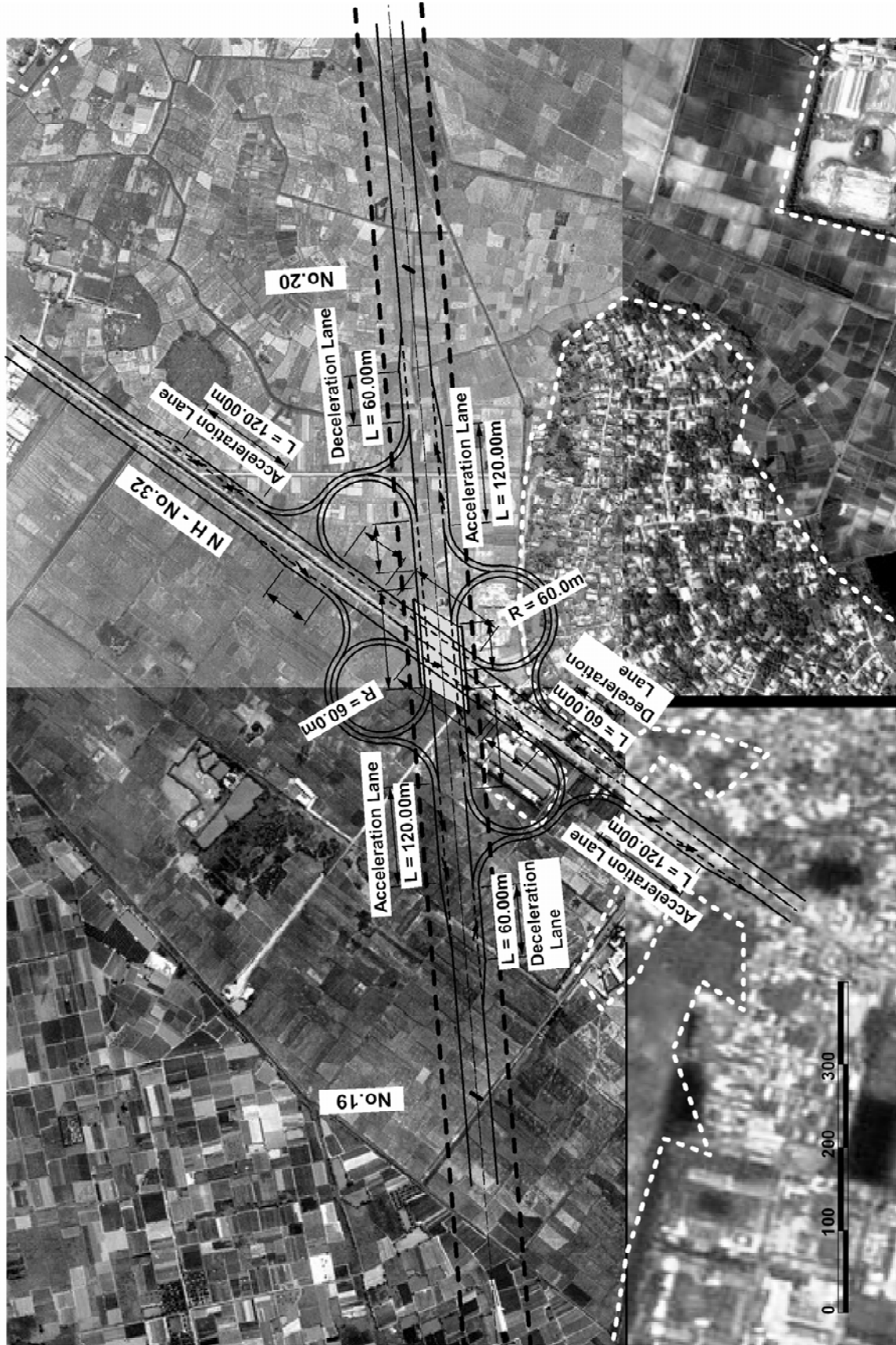
Figure 3.4.3 Intersection Plan for NH23 and RR4



Source: HAIDEP Study Team



Figure 3.4.4 Intersection Plan for NH32 and RR4



Source: HAIDEP Study Team