

## 付属資料

1. 調査団員・氏名
2. 調査行程
3. 関係者（面会者）リスト
4. 討議議事録（M/D）
5. 事業事前計画表（基本設計時）
6. 参考資料／入手資料リスト
7. 自然条件調査結果
  - 7-1 自然条件調査位置図
  - 7-2 陸上・海底地形測量図
  - 7-3 地質調査結果
    - ボーリング柱状図
    - 室内試験結果概要（比重、かさ比重、含水比）
    - 粒度分析試験結果
    - 1軸圧縮試験
  - 7-4 流向・流速調査結果
8. 既存栈橋の老朽度調査結果
9. 島間連絡船の運航実績（2004年～2006年）
10. コンテナ船（Southern Moana）の輸送実績（2004年～2006年）

## 1. 調査団員・氏名

### 1-1 現地調査時

<u>担当業務</u>		<u>氏名および所属</u>
総括	永友 紀章	独立行政法人国際協力機構 無償資金協力部 業務第3グループ 農漁村開発チーム長
業務主任 / 港湾開発計画	小笠原 敏也	水産エンジニアリング(株)
水産流通 / 環境社会配慮	鳥居 道夫	水産エンジニアリング(株)
土木施設設計 / 自然条件調査	秋山 佳光	水産エンジニアリング(株)
施工計画 / 積算	小川 雅	水産エンジニアリング(株)

### 1-2 基本設計概要説明時

<u>担当業務</u>		<u>氏名および所属</u>
副総括	三村 一郎	独立行政法人国際協力機構 無償資金協力部 業務第3グループ 農漁村開発チーム
業務主任 / 港湾開発計画	小笠原 敏也	水産エンジニアリング(株)
土木施設設計 / 自然条件調査	秋山 佳光	水産エンジニアリング(株)

## 2. 調査行程

### 2-1 現地調査時

月日	曜日	官団員	コンサルタント団員				
		団長	業務主任 / 港湾開発計画	水産流通 / 環境社会配慮	土木施設設計 / 自然条件調査	施工計画 / 積算	
11/13	月		成田発 (19:00)				
11/14	火	成田発 (21:25)	(6:45) ナンディ (11:30) スバ着 (12:00)、団内協議				
11/15	水	(8:55) シドニー (13:55) (18:45) ナンディ (20:45) スバ着 (21:15)	船舶・貨物量・環境関連資料収集		建設・調達事情調査		
11/16	木	スバ発 (10:00) フナフチ着 (12:30)					
11/17	金	AM: インセプション・レポートの説明(プロジェクト実行委員会) PM: 水産局、土地測量局、環境局、通信・運輸省との協議			簡易深淺測量		
11/18	土	サイト調査(既存スリップウェイ、棧橋、保税倉庫、水産局事務所等)					
11/19	日	団内協議					
11/20	月	プロジェクト実行委員会との協議、討議議事録署名 フナフチ発 (13:15) スバ着 (15:45) 大使館、JICA 事務所報告	プロジェクト実行委員会との協議、議事録署名  フナフチ港利用状況調査				
11/21	火	スバ ナンディ(陸路) ナンディ発 (12:15) ブリスベン着 (14:15)	海運局との協議		自然条件調査、海象調査		
11/22	水	ブリスベン発 (8:55) 成田着 (16:45)	水産局との協議		自然条件調査	建設・調達事情調査	
11/23	木		管理・運営体制調査		自然条件調査	建設・調達事情調査	
11/24	金		管理・運営体制調査	援助動向調査	自然条件調査	建設・調達事情調査	
11/25	土		自然条件調査、既存 棧橋現況調査	環境社会配慮調査		自然条件調査、既存 棧橋現況調査	
11/26	日		団内協議				
11/27	月		港利用状況 / 島間連 絡船貨物量調査	水産流通事情調査	自然条件調査、既存 棧橋現況調査	フナフチ発 (13:15) スバ着 (15:45)	
11/28	火		港利用状況 / 島間連 絡船貨物量調査	水産流通事情調査	自然条件調査、既存 棧橋現況調査	建設・調達事情調査	
11/29	水		管理・運営体制調査	水産流通事情調査	自然条件調査	建設・調達事情調査	
11/30	木		管理・運営体制調査	水産流通事情調査	自然条件調査	建設・調達事情調査	
12/1	金		管理・運営体制調査	水産流通事情調査	自然条件調査	積算関連調査	
12/2	土		資料整理				積算関連調査
12/3	日		団内協議				
12/4	月		補足調査、追加資料収集			自然条件調査	積算関連調査
12/5	火		補足調査、追加資料収集			自然条件調査	積算関連調査
12/6	水		補足調査、追加資料収集			自然条件調査	積算関連調査
12/7	木		補足調査	フナフチ発 (13:15) スバ着 (15:45)			積算関連調査
12/8	金		補足調査	大使館、JICA 報告(電話)			
12/9	土		資料整理	スバ発 (6:00) (6:25) ナンディ (10:30) 成田着 (17:00)			
12/10	日		資料整理				
12/11	月		地質調査監理				
12/12	火		地質調査監理				
12/13	水	地質調査監理					
12/14	木	フナフチ発 (13:15) スバ着 (15:45)					
12/15	金	大使館、JICA 事務所 報告					
12/16	土	スバ発 (6:00) (6:25) ナンディ (10:30) 成田着 (17:00)					

2-2 基本設計概要説明時

月日	曜日	官団員	コンサルタント団員
		副総括	業務主任 / 港湾開発計画・土木施設設計 / 自然条件調査
3/10	土	成田発 (19:00)	成田発 (19:00)
3/11	日	(6:45) ナンディ スパ(陸路)	(6:45) ナンディ (11:30) スパ着 (12:00)
3/11	月	スパ発 (10:00) フナフチ着 (12:30)、サイト調査	
3/13	火	天然資源土地省、通信・運輸省表敬、基本設計概要書説明	
3/14	水	天然資源土地大臣表敬、プロジェクト実行委員会との討議議事録案協議	
3/15	木	討議議事録署名 フナフチ発 (13:15) スパ着 (15:45)	同左 補足資料収集
3/16	金	大使館報告、JICA 事務所報告 スパ ナンディ(陸路)	補足資料収集
3/17	土	ナンディ発 (10:30) 成田着 (17:00)	補足資料収集
3/18	日	/	団内協議
3/19	月		フナフチ発 (13:15) スパ着 (15:45)
3/20	火		大使館報告、JICA 事務所報告、スパ発 (19:00) ナンディ着 (19:30)
3/21	水		ナンディ発 (9:45) (17:35) ソウル (18:40) 成田着 (20:50)

### 3. 関係者（面会者）リスト

#### 3-1 現地調査時

##### 1. ツバル国政府

Mr. Pnapasi Nelesone	Secretary to Government, Office of the Prime Minister
Mr. Faatasi Malologa	Director, Lands & Survey
Filipo Taulima	Director, Public Works Division
Isaia Taape	Ag. Secretary, Ministry of Communication & Transport
Uale Sinapati	Ag. Director, Department of Marine
Temate Melitiana	Director, Aid Department
Charles Safega	Director, Customs
Minute A. Taupo	Secretary, Ministry of Natural Resources & Lands
Itaia Lausaveve	Director, Department of Agriculture
Enate E. Tauaa	Ag. Director, Department of Environment
Samsoni Finikaso	Director, Department of Fisheries
Monise Laafai	General Manager, Tuvalu Cooperative Society
Mafalu Lotolua	General Manager, Tuvalu Electricity Cooperation
Tepau Paape	Senior Immigration Officer, Immigration
Talafou Esekia	Maritime Commander, Police Maritime Wing
Falasese Tupau (以上「ツ」国プロジェクト実行委員会メンバー)	Fisheries Licensing Officer, Department of Fisheries
Siulai Fioana Levita	Quantity Surveyor, Design & Supervision Unit, Public Works Department

##### 2. 在フィジー日本国大使館

高屋繁樹 一等書記官

##### 3. JICA フィジー事務所

武下悌治	所長
池 哲広	次長
鈴木 央	所員

##### 4. 国際機関

Pasemeta Sateko Talaapa EU, NZaid In-Country Coordinator

### 3-2 基本設計概要説明時

#### 1. ツバル国政府

Hon. Tavau Teii	Minister of Ministry of Natural Resources & Lands
Pnapasi Nelesone	Secretary to Government, Office of the Prime Minister
apugao Faleffou	Secretary, Ministry of Communication & Transports
Minute A. Taupo	Secretary, Ministry of Natural Resources & Land
Faatasi Malologa	Director, Lands & Survey
Uale Sinapati	Ag. Director, Department of Marine
Charles Safega	Director, Customs
Itaia Lausaveve	Director, Department of Agriculture
Samuelu Teiit	Ag. Director, Department of Fisheries
Monise Laafai	General Manager, Tuvalu Cooperative Society
Mafalu Lotolua	General Manager, Tuvalu Electricity Cooperation
Taniklo Imeli	Assistant Marine Manager
Selegunia Fusi	Commanding Officer
Houati Iece	Tuuaiu Pilot
Lesua Taape	Assistant Secretary, Ministry of Communication & Transports
Pepptua E Latasi	Climate Change Officer
Ampelosa M Teltulu	Deputy Director of Works

(上記天然資源省大臣以外は、ツバル国プロジェクト実行委員会メンバー)

#### 2. 在フィジー日本国大使館

高屋繁樹	一等書記官
渡邊 弘	二等書記官

#### 3. JICA フィジー事務所

武下悌治	所長
池 哲広	次長
若杉 聡	所員

#### 4. 討議議事録 (M/D)

##### 4-1 現地調査時

**Minutes of Discussions  
on the Basic Design Study on  
the Project for The Improvement of Funafuti Port  
in Tuvalu**

In response to the request from the Government of Tuvalu, the Government of Japan decided to conduct a Basic Design Study on the Project for The Improvement of Funafuti Port in Tuvalu (hereinafter referred to as "the Project") and entrusted the study to the Japan International Cooperation Agency (hereinafter referred to as "JICA").

JICA sent to Tuvalu the Basic Design Study Team (hereinafter referred to as "the Team"), headed by Mr. Noriaki Nagatomo, Team Director, Rural Development Team of Project Management Group III, Grant Aid Management Department, JICA, and is scheduled to stay in the country from November 16 to November 20, 2006.

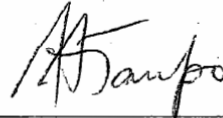
The Team held discussions with the relevant officials concerned of the Government of Tuvalu and conducted a field survey at the study area.

In the course of the discussions and field survey, both sides have confirmed the main items described in the attached sheets. The Team will proceed to further works and prepare the Basic Design Study Report.

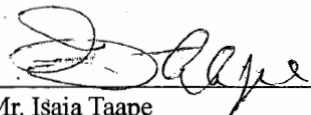
Funafuti, November 20, 2006



Mr. Noriaki Nagatomo  
Leader,  
Basic Design Study Team  
Japan International Cooperation Agency



Mr. Minute Taupo  
Secretary,  
Ministry of Natural Resources and Lands  
Tuvalu



Mr. Isaia Taape  
Acting Secretary,  
Ministry of Communication and Transport  
Tuvalu

## ATTACHMENT

### 1. Objective of the Project

The objective of the Project is to secure safety and efficient loading by improvement of facilities in Funafuti Port.

### 2. Project Site

The sites of the Project are located at Funafuti in Tuvalu as shown in ANNEX-1.

### 3. Responsible and Implementing Organizations

3-1. The Responsible Organization is the Ministry of Natural Resources and Lands (MNRL).

3-2. The Implementing Organization is the Ministry of Communication and Transport (MCT) which will conclude the contract with the Japanese contractor when the Project is implemented.

3-3. The Organization charts of MNRL and MCT are shown in ANNEX-2.

### 4. Items requested by the Government of Tuvalu

After discussions with the Team, the items described in ANNEX-3 were finally requested by the Tuvalu side. JICA will assess the appropriateness of each item and recommend to the Government of Japan for approval.

### 5. Japan's Grant Aid System

5-1. The Tuvalu side understands "The Japan's Grant Aid Scheme" explained by the Team as described in ANNEX-4.

5-2. The Tuvalu side will make the necessary arrangement with appropriate authorities to meet its major undertakings, as described in Annex-5, for the smooth implementation of the Project, as a condition for the Japan's Grant Aid to be implemented.

### 6. Schedule of the Study

6-1. The Consultant proceeds further studies in Tuvalu until December 7, 2006.

6-2. JICA will prepare the draft report in English and dispatch a mission to Tuvalu to explain its contents in March 2007.

6-3. In case that the contents of the report are accepted in principle by the Government of Tuvalu, JICA will complete the final report and send it to the Government of Tuvalu in May, 2007.

### 7. Other relevant issues

#### 7-1. Site of the new wharf

Both sides agreed that the new wharf should be placed at the southern side of the old wharf in terms of technical and natural conditions.

#### 7-2. Permissions necessary for the Project

The Tuvalu side agreed to issue permission necessary for the Project from the organizations concerned prior to the construction of facilities.



#### 7-3. Environmental and social impacts

The Team confirmed that all the items listed in the Scoping Check List attached to the application form of the Project have no serious impact.

However, the Tuvalu side will implement IEE and EIA, if dredging or reclamation is required.

#### 7-4. Land relevant issues

The Team confirmed that the construction sites for the facilities are secured by the Government of Tuvalu through the Government leased land from land owners as attached in ANNEX-6.

The Tuvalu side will hold a meeting with land owners for smooth implementation of the Project

#### 7-5. Dredging works after completion of the Project

The Team explained that the Tuvalu side is responsible for dredging works for maintenance of lanes for vessels after completion of the Project, if it is necessary. The Tuvalu side ensured to provide budget for this periodical works.

#### 7-6. Maintenance of facilities

The Tuvalu side ensured to secure enough budget and personnel for proper maintenance of the facilities constructed by the Project.

#### 7-7. Temporary construction yard

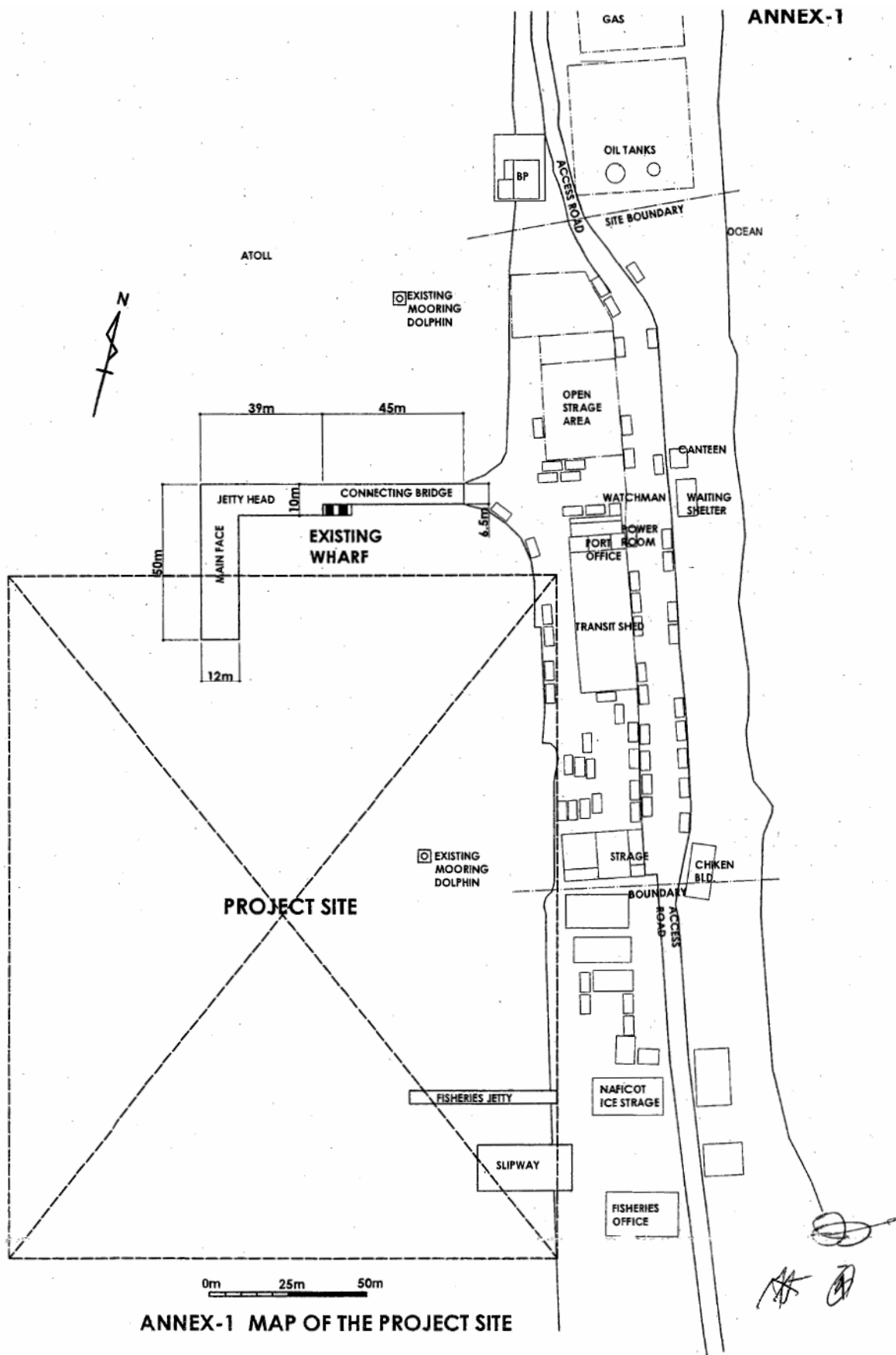
The Tuvalu side ensured to secure the vacant lot for construction materials.

#### 7-8. Questionnaire

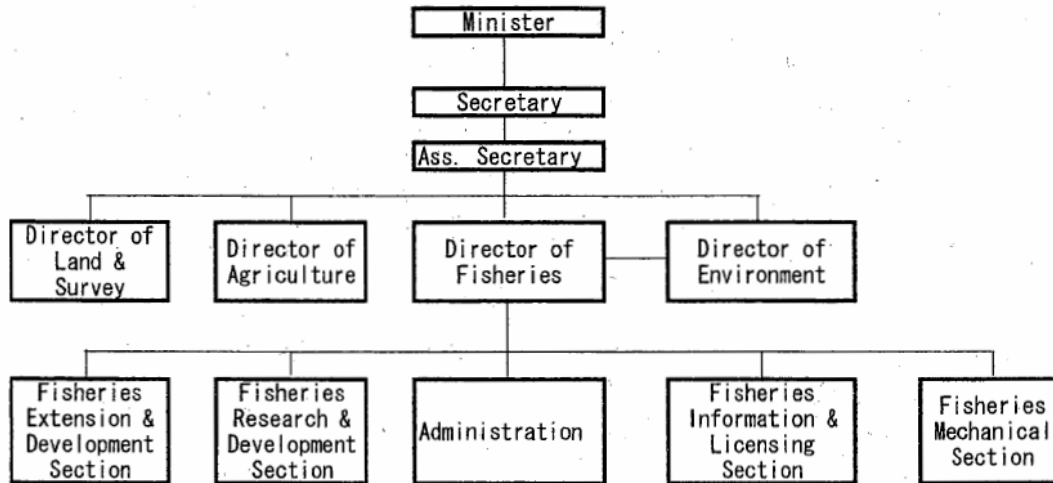
The Tuvalu side shall submit answers in English to the Questionnaire which the Team handed to the Tuvalu side by December 1, 2006.

- ANNEX-1 Map of the Project Site
- 2 Organization charts of MNRL and MCT
- 3 List of requested items
- 4 Japan's Grant Aid Scheme
- 5 Major Undertakings to be taken by Each Government
- 6 Land registries of the construction sites

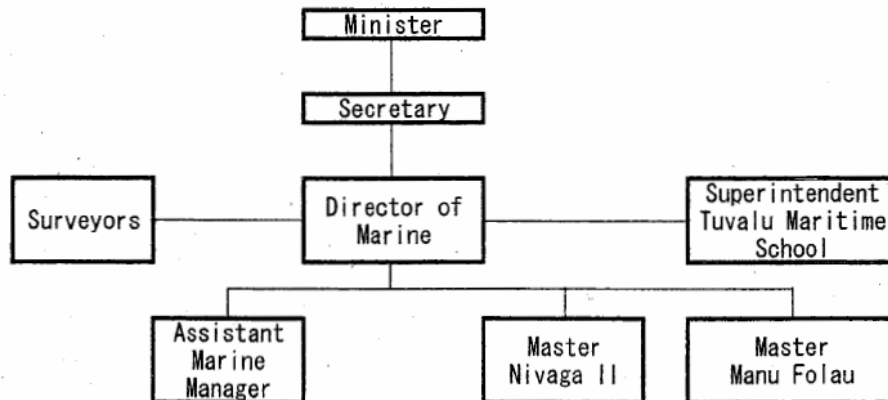




Organization Structure of Ministry of Natural Resources and Lands



Organization Structure of Ministry of Communication and Transport



**Items requested by the Government of Tuvalu**

Sr.No	Items	Description	Priority
1	Wharf (new)	with essential facility (power supply to vessels, security lights etc.)	A
2	Water Tank	with water supply to vessels	A
3	Slipway	repair of existing slipway	B
4	Office Building(renovation)	for Fisheries Department	B
5	Warehouse (renovation)	renovation to divide domestic and international use for efficient operation	B
6	Equipment	-Fork Lift -Side Lifter - Reefer Container	B B C

A: Urgently required for the Project

B: Important but alternatives are also considered

C: Necessary but justification is carefully examined through technical and financial aspects

Handwritten signatures and initials, including a large stylized signature and several smaller initials.

## JAPAN'S GRANT AID SCHEME

The Grant Aid Scheme provides a recipient country with non-reimbursable funds to procure the facilities, equipment and services (engineering services and transportation of the products, etc.) for economic and social development of the country under principles in accordance with the relevant laws and regulations of Japan. The Grant Aid is not supplied through the donation of materials as such.

### 1. Grant Aid Procedures

Japan's Grant Aid Scheme is executed through the following procedures.

Application	(Request made by the recipient country)
Study	(Basic Design Study conducted by JICA)
Appraisal & Approval	(Appraisal by the Government of Japan and Approval by the Cabinet)
Determination of Implementation	(The Note exchanged between the Governments of Japan and recipient country)

Firstly, the application or request for a Grant Aid project submitted by a recipient country is examined by the Government of Japan (the Ministry of Foreign Affairs) to determine whether or not it is eligible for Grant Aid. If the request is deemed appropriate, the Government of Japan assigns JICA (Japan International Cooperation Agency) to conduct a study on the request.

Secondly, JICA conducts the study (Basic Design Study) using (a) Japanese consulting firm(s).

Thirdly, the Government of Japan appraises the project to see whether or not it is suitable for Japan's Grant Aid Scheme, based on the Basic Design Study report prepared by JICA, and the results are then submitted to the Cabinet for approval.

Fourthly, the project, once approved by the Cabinet, becomes official with the Exchange of Notes (E/N) signed by the Governments of Japan and the recipient country.

Finally, for the implementation of the project, JICA assists the recipient country in such matters as preparing tenders, contracts and so on.

### 2. Basic Design Study

#### (1) Contents of the study

The aim of the Basic Design Study (hereafter referred to as "the Study") conducted by JICA on a requested project (hereafter referred to as "the Project") is to provide a basic document necessary for the appraisal of the Project by the Government of Japan. The contents of the Study are as follows:



- Confirmation of the background, objectives, and benefits of the Project and also institutional capacity of agencies concerned of the recipient country necessary for the Project's implementation.
- Evaluation of the appropriateness of the Project to be implemented under the Grant Aid Scheme from a technical, social and economic point of view.
- Confirmation of items agreed on by both parties concerning the basic concept of the Project.
- Preparation of a basic design of the Project.
- Estimation of costs of the Project.

The contents of the original request are not necessarily approved in their initial form as the contents of the Grant Aid project. The Basic Design of the Project is confirmed considering the guidelines of the Japan's Grant Aid Scheme.

The Government of Japan requests the Government of the recipient country to take whatever measures are necessary to ensure its self-reliance in the implementation of the Project. Such measures must be guaranteed even though they may fall outside of the jurisdiction of the organization in the recipient country actually implementing the Project. Therefore, the implementation of the Project is confirmed by all relevant organizations of the recipient country through the Minutes of Discussions.

#### (2) Selection of Consultants

For smooth implementation of the Study, JICA uses (a) registered consulting firm(s). JICA selects (a) firm(s) based on proposals submitted by interested firms. The firm(s) selected carry(ies) out a Basic Design Study and write(s) a report, based upon terms of reference set by JICA. The consultant firm(s) used for the Study is(are) recommended by JICA to the recipient country to also work on the Project's implementation after the Exchange of Notes, in order to maintain technical consistency.

### 3. Japan's Grant Aid Scheme

#### (1) Exchange of Notes (E/N)

Japan's Grant Aid is extended in accordance with the Notes exchanged by the two Governments concerned, in which the objectives of the Project, period of execution, conditions and amount of the Grant Aid, etc., are confirmed.

(2) "The period of the Grant Aid" means the one fiscal year which the Cabinet approves the Project for. Within the fiscal year, all procedures such as exchanging of the Notes, concluding contracts with (a) consultant firm(s) and (a) contractor(s) and final payment to them must be completed. However, in case of delays in delivery, installation or construction due to unforeseen factors such as national disaster, the period of the Grant Aid can be further extended for a maximum of one fiscal year at most by mutual agreement between the two Governments.

(3) Under the Grant Aid, in principle, Japanese products and services including transport or those of the recipient country are to be purchased. When the two Governments deem it necessary, the Grant Aid may be used for the purchase of the products or services of a third country. However, the prime contractors, namely, consulting, constructing and procurement firms, are limited to "Japanese nationals". (The term "Japanese nationals" means persons of Japanese nationality or Japanese corporations controlled by persons of Japanese nationality.)

(4) Necessity of "Verification"

Handwritten signatures and initials, including a large stylized signature and several smaller initials, located at the bottom right of the page.

The Government of recipient country or its designated authority will conclude contracts denominated in Japanese yen with Japanese nationals. Those contracts shall be verified by the Government of Japan. This "Verification" is deemed necessary to secure accountability to Japanese taxpayers.

(5) Undertakings required of the Government of the Recipient Country

In the implementation of the Grant Aid Project, the recipient country is required to undertake such necessary measures as the following:

- a) To secure land necessary for the sites of the Project and to clear, level and reclaim the land prior to commencement of the construction,
- b) To provide facilities for the distribution of electricity, water supply and drainage and other incidental facilities in and around the sites,
- c) To secure buildings prior to the procurement in case the installation of the equipment,
- d) To ensure all the expenses and prompt excursion for unloading, customs clearance at the port of disembarkation and internal transportation of the products purchased under the Grant Aid,
- e) To exempt Japanese nationals from customs duties, internal taxes and other fiscal levies which will be imposed in the recipient country with respect to the supply of the products and services under the Verified Contracts,
- f) To accord Japanese nationals, whose services may be required in connection with the supply of the products and services under the Verified contracts, such facilities as may be necessary for their entry into the recipient country and stay therein for the performance of their work.

(6) "Proper Use"

The recipient country is required to maintain and use the facilities constructed and the equipment purchased under the Grant Aid properly and effectively and to assign staff necessary for this operation and maintenance as well as to bear all the expenses other than those covered by the Grant Aid.

(7) "Re-export"

The products purchased under the Grant Aid should not be re-exported from the recipient country.

(8) Banking Arrangements (B/A)

a) The Government of the recipient country or its designated authority should open an account in the name of the Government of the recipient country in a bank in Japan (hereinafter referred to as "the Bank"). The Government of Japan will execute the Grant Aid by making payments in Japanese yen to cover the obligations incurred by the Government of the recipient country or its designated authority under the Verified Contracts.

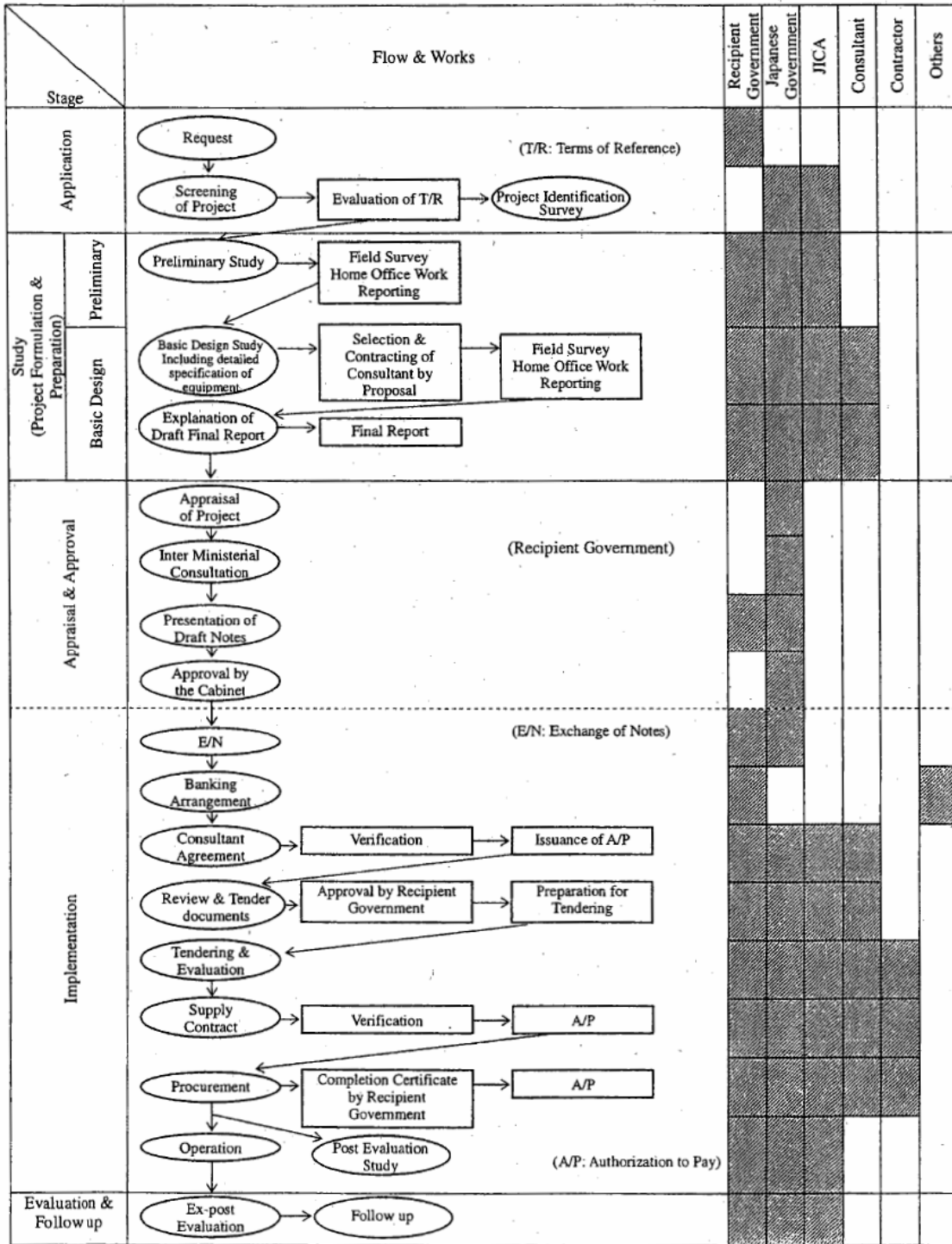
b) The payments will be made when payment requests are presented by the Bank to the Government of Japan under an Authorization to Pay (A/P) issued by the Government of the recipient country or its designated authority.

(9) Authorization to Pay (A/P)

The Government of the recipient country should bear an advising commission of an Authorization to Pay and payment commissions to the Bank.



### Flow Chart of Japan's Grant Aid Procedures



Note: This chart shows the procedures in case of the Basic Design Study will include preparation of detailed specification of equipment

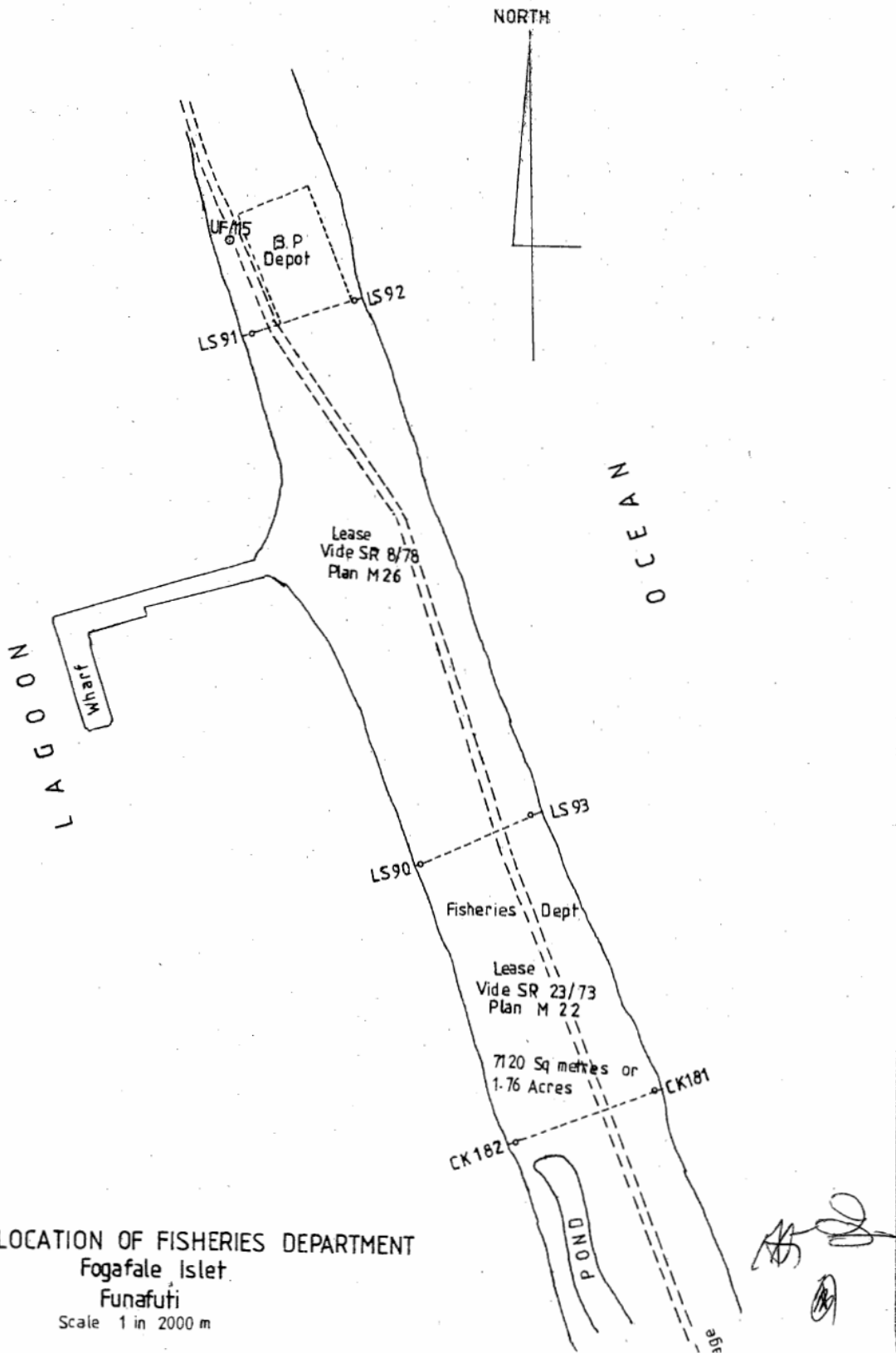


## ANNEX-5

## Major Undertaking to be Taken by Each Government

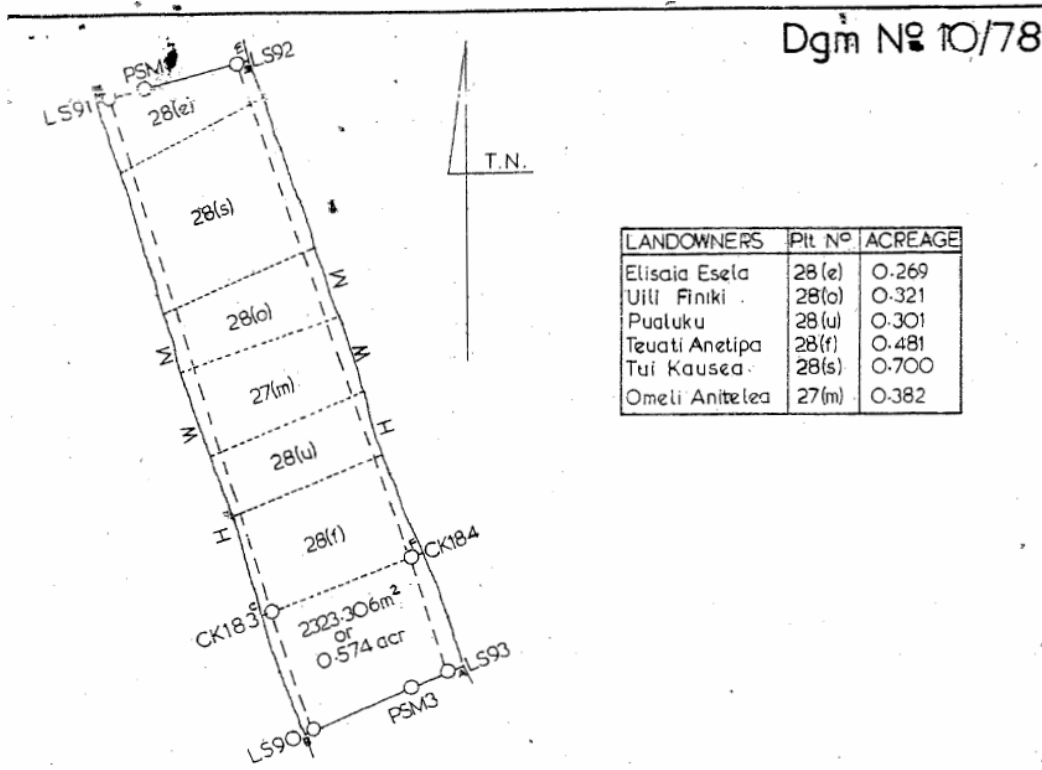
No.	Items	To be covered by Grant Aid	To be covered by Recipient Side
1	To secure land		•
2	To Clear, level and reclaim the site when needed		•
3	To prepare the temporary construction yard at the Funafuti Port area		•
4	To prepare temporary roads when needed		
	1) Within the site	•	
	2) Outside the site		•
5	To provide facilities for the distribution of electricity, water supply, drainage and other incidental facilities		
	1) Electricity to the temporary construction yard		
	a. The distribution line		•
	b. The drop wiring and internal wiring	•	
	c. The main circuit breaker and transformer	•	
	2) Water supply to the temporary construction yard		
	a. The city water distribution main		•
	b. The supply system (receiving and elevated tanks)	•	
	3) Drainage within the temporary construction yard		
	a. The city drainage main (for storm, sewer and others)		•
	b. The drainage system (for toilet sewer, ordinary waste, storm drainage and others) within the site	•	
6	To bear the following commissions to the Japanese bank for banking services based upon the B/A		
	1) Advising commission of A/P		•
	2) Payment commission		•
7	To ensure unloading and customs clearance at port of disembarkation in recipient country		
	1) Marine (Air) transportation of the products imported to the recipient country	•	
	2) Tax exemption and customs clearance of the products at the port of disembarkation		•
	3) Internal transportation from the port of disembarkation to the project site	(•)	(•)
8	To accord Japanese nationals whose services may be required in connection with the supply of the products and the services under the verified contract, such facilities as may be necessary for their entry into the recipient country and stay therein for the performance of their work.		•
9	To exempt Japanese nationals from customs duties, internal taxes and other fiscal levies which may be imported into the recipient country with respect to the supply of the products and services under the verified contract.		•
10	To maintain and use properly and effectively the facilities constructed and equipment provided under the Grant Aid		•
11	To bear all the expenses, other than those to be borne by the Grant Aid, necessary for construction of the facilities as well as for the transportation and installation of the equipment		•

(B/A: Banking Arrangement, A/P: Authorization to Pay)



LOCATION OF FISHERIES DEPARTMENT  
Fogafale Islet  
Funafuti  
Scale 1 in 2000 m

Dgm No 10/78



LANDOWNERS	Pit No	ACREAGE
Elisaia Esela	28(e)	0.269
Uili Finiki	28(o)	0.321
Pualuku	28(u)	0.301
Teuati Anetipa	28(f)	0.481
Tui Kausea	28(s)	0.700
Omeli Anitelea	27(m)	0.382

Scale 1 in 2000m

All beacons — copper spigot & plate in concrete except Bcns ABCDE  
F — temporary

The figure A,LS93,PSM3,LS90,B,C,D,LS90,PSM1,LS92,E,F to A  
represents 12254.900m<sup>2</sup> or 3.028 acres being

Lot FF174

situate on the islet of Funafuti Funafuti Atoll  
Tuvalu

Surveyed in September 1978 by Lands & Surveys Division

This Dgm is annexed to No	The original Dgm is No	L&S File No SR No 8/78 Compilation M26
date	Grant/Deed No	Cad sht No

*Handwritten signatures and initials.*

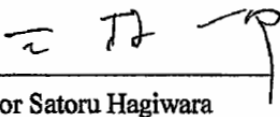
**Minutes of Discussions**  
**on**  
**the Basic Design Study**  
**on**  
**the Project for the Improvement of Funafuti Port**  
**in Tuvalu**  
**(EXPLANATION ON DRAFT REPORT)**

In November 2006, the Japan International Cooperation Agency (hereinafter referred to as "JICA") dispatched a Basic Design Study Team on The Project for the Improvement of Funafuti Port in Tuvalu (hereinafter referred to as "the Project") to Tuvalu, and through discussion, field survey, and technical examination of its results in Japan, JICA prepared a draft report of the study.

In order to explain and to consult the Government of Tuvalu on the components of the draft report, JICA sent to Tuvalu the Draft Report Explanation Team (hereinafter referred to as "the Team"), which is managed by Mr. Satoru Hagiwara, Group Director, Project Management Group III, Grant Aid Management Department JICA, and headed by Mr. Ichiro Mimura, from 12<sup>th</sup> March, 2007 to 19<sup>th</sup> March, 2007.

In the course of discussions and field survey, both parties confirmed the main items described on the attached sheets.

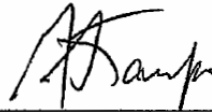
Funafuti, 15<sup>th</sup> March, 2007



---

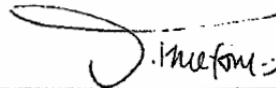
For Satoru Hagiwara

Draft Report Explanation Team  
Japan International Cooperation Agency  
(JICA)



---

Mr. Minute A. Taupo  
Secretary  
Ministry of Natural Resources and Lands  
Tuvalu



---

Mr. Tapugao Falefou  
Secretary  
Ministry of Communication and Transports  
Tuvalu

## ATTACHMENT

### 1. Components of the Draft Report

The Government of Tuvalu agreed and accepted in principle the components of the draft report explained by the Team including obligations of the recipient country which are mentioned in Chapter 3 of the draft report.

### 2. Japan's Grant Aid scheme

The Tuvalu side understands the Japan's Grant Aid Scheme and the necessary measures to be taken by the Government of Tuvalu as explained by the Team and described in Annex- 4 of the Minutes of Discussions signed by Tuvalu side and the Basic Design Study Team on 20<sup>th</sup> November, 2006.

### 3. Schedule of the Study

JICA will complete the final report in accordance with the confirmed items and send it to the Government of Tuvalu by May 2007.

### 4. Other relevant issues

#### (1) Environmental and Construction Permission of the Project

The Tuvalu side shall ensure to take necessary measures to obtain environmental assessment and to report the result of the environment assessment to the JICA Fiji Office in the Republic of Fiji prior to the P/Q.

The Japanese side confirms that construction permission from the Ministries concerned is not required.

#### (2) Temporary construction yard

The Tuvalu side shall secure and provide the vacant lot for construction materials at the location indicated in Annex- 1 before the commencement of the construction work.

#### (3) Demolition of the Cement shed and equipment workshop

The Tuvalu side shall ensure that the Cement shed and equipment workshop which may impede the progress of the Project are to be demolished and cleared before the commencement of the construction work.

**(4) Land relevant issues**

- 1) **Renewal of the land lease:** The Tuvalu side shall secure the renewal of the present leased land
- 2) **Meeting with land owners:** The Tuvalu side shall ensure to hold a meeting with land owners for smooth implementation of the Project and to report to the JICA Fiji Office in the Republic of Fiji by the end of April 2007.

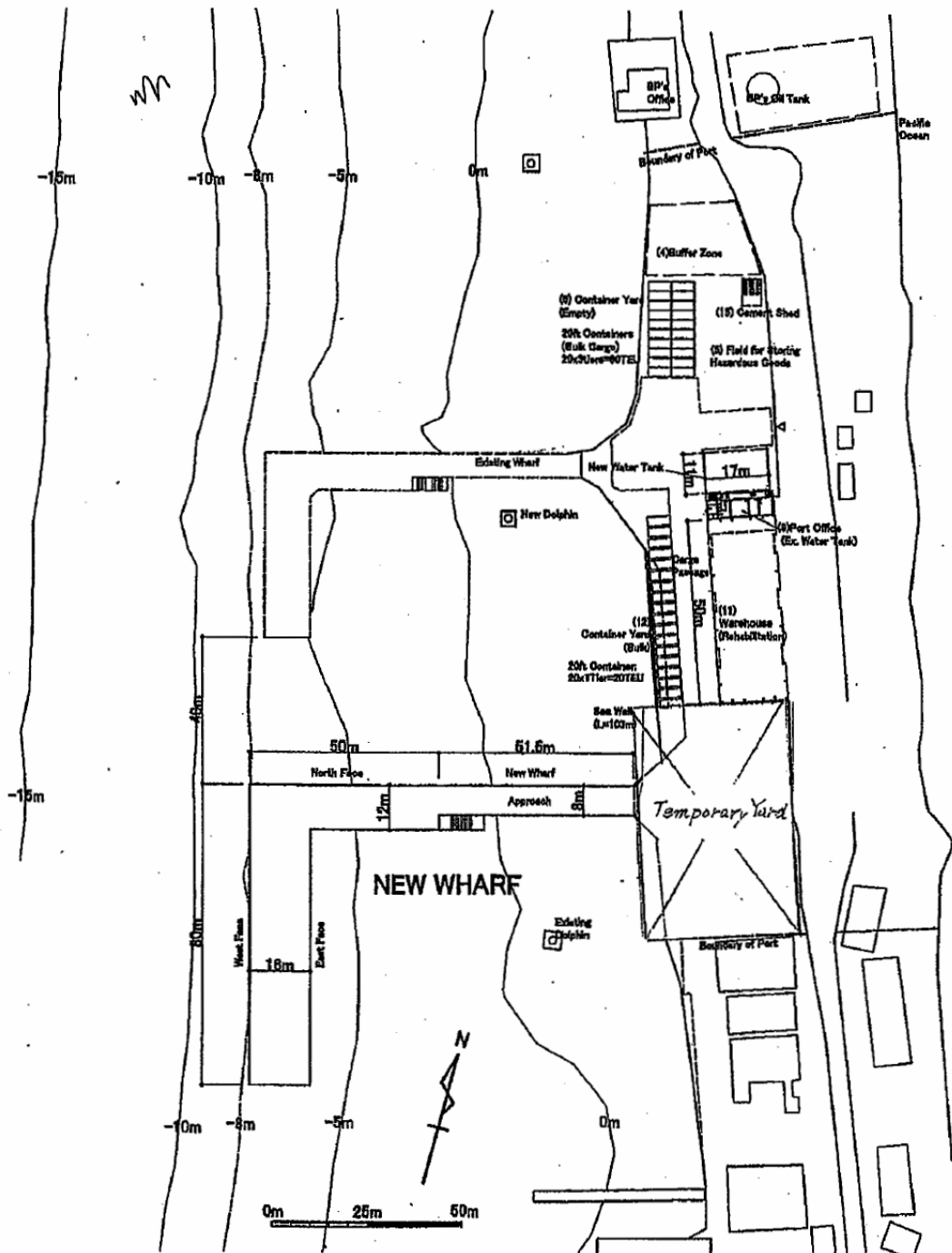
**(5) Facility and machinery equipment**

The Tuvalu side shall be responsible to secure sufficient budget and personnel to utilize and maintain the facility properly constructed and the equipment provided by the Project.

**(6) Water tank**

Both sides agree for the top of the water tank to be used for the passenger terminal.

ANNEX I



D.P.

*[Handwritten mark]*

*[Handwritten mark]*