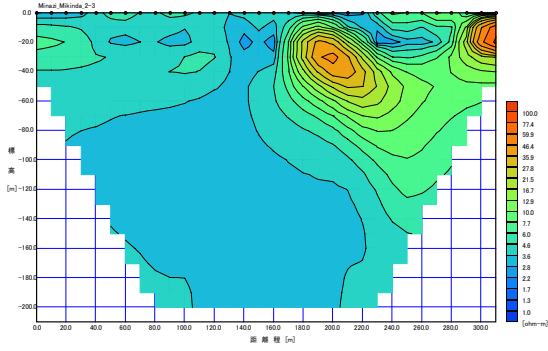
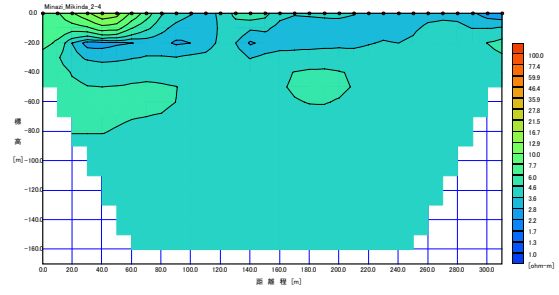


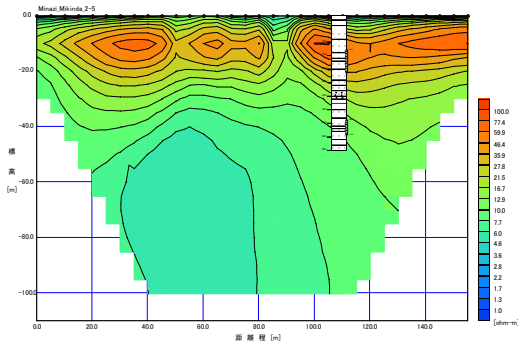
Kibaha



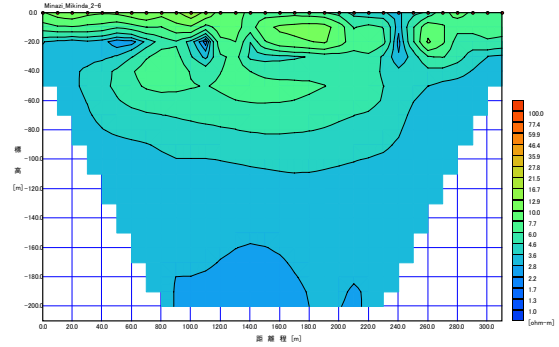
Minazi Mikinda(1/2) 2-3rd Line



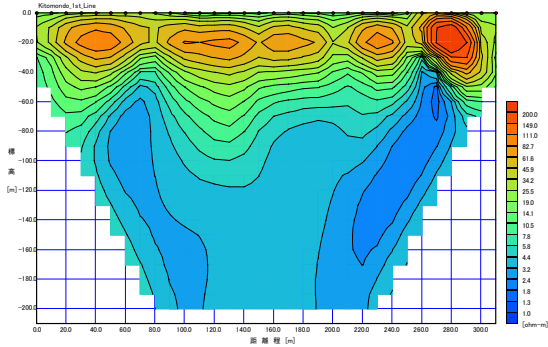
Minazi Mikinda(1/2) 2-4th Line



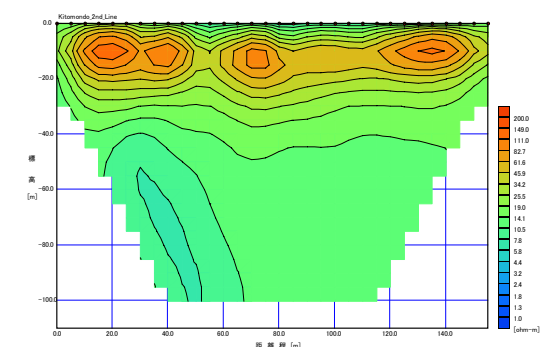
Minazi Mikinda(1/2) 2-5th Line



Minazi Mikinda(1/2) 2-6th Line



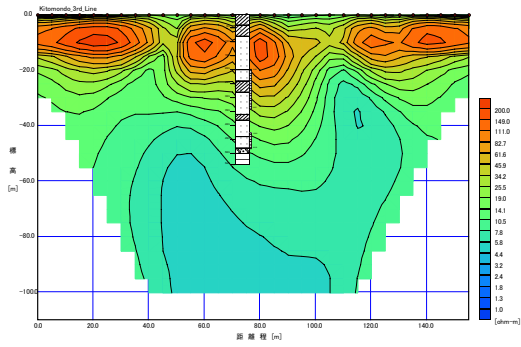
Minazi Mikinda (2/2) / Kitomondo 1st Line



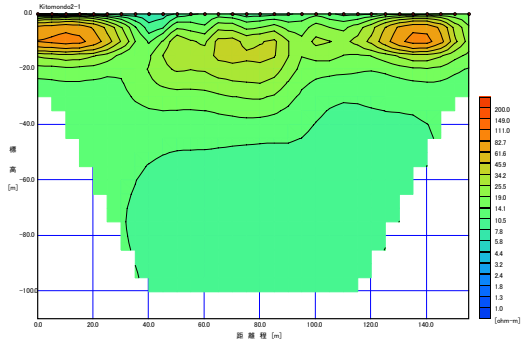
Minazi Mikinda (2/2) / Kitomondo 2nd Line

Figure A7-2 2-D Images of Groundwater Exploration Results (3/11)

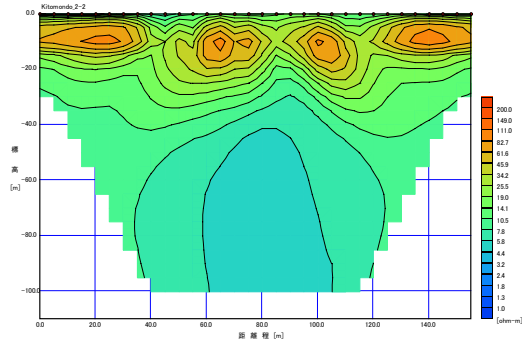
Kibaha



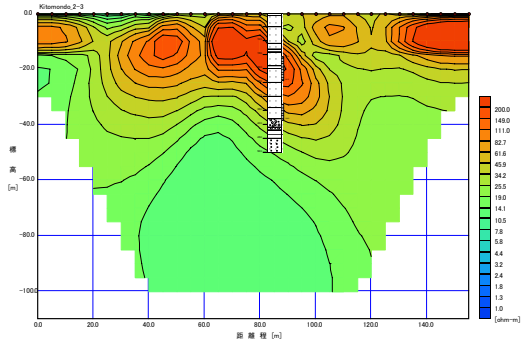
Minazi Mikinda (2/2) / Kitomondo 3rd Line



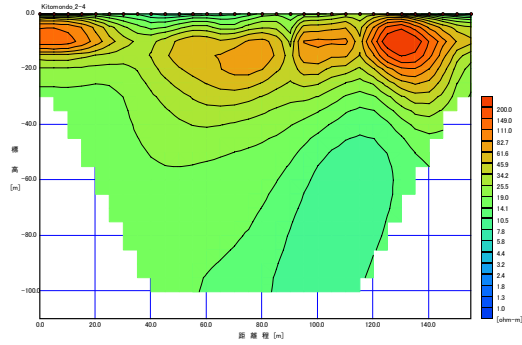
Minazi Mikinda(2/2) / Kitomondo 2-1st Line



Minazi Mikinda(2/2) / Kitomondo 2-2nd Line



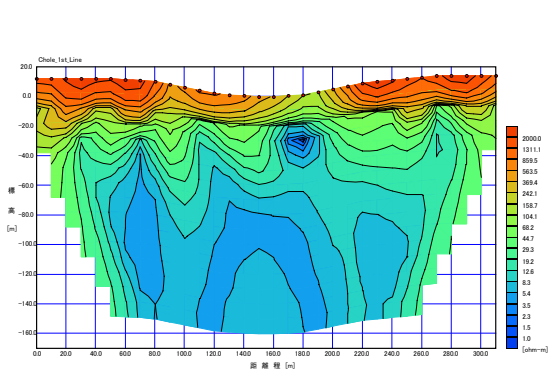
Minazi Mikinda (2/2) / Kitomondo 2-3rd Line



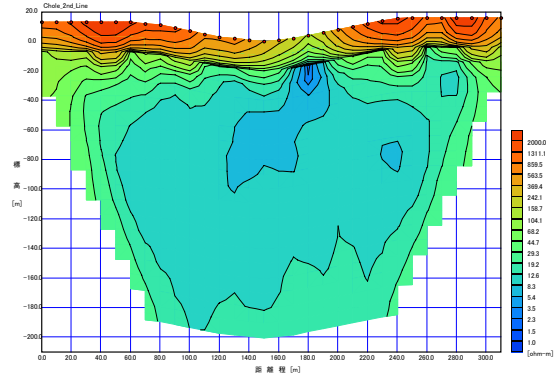
Minazi Mikinda (2/2) / Kitomondo 2-4th Line

Figure A7-2 2-D Images of Groundwater Exploration Results (4/11)

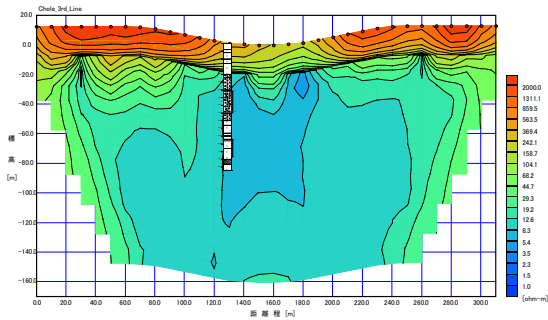
Kisarawe



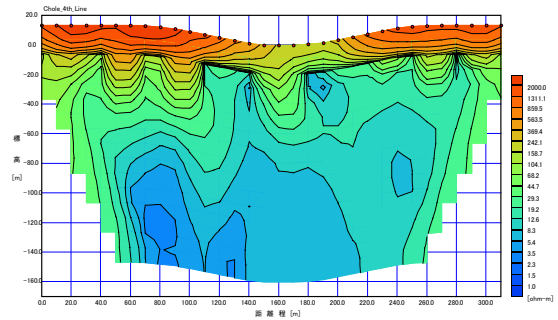
Chole 1st Line



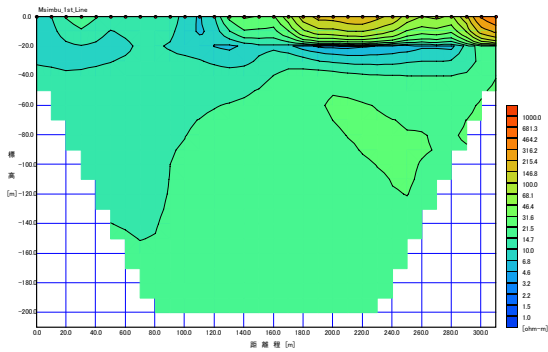
Chole 2nd Line



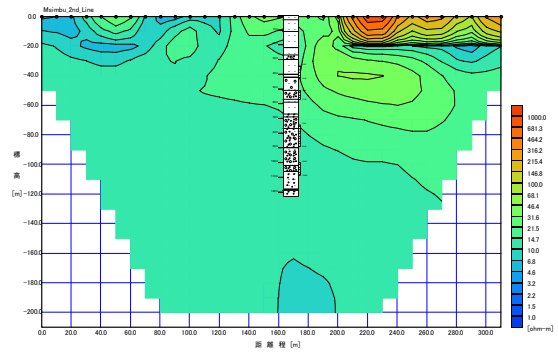
Chole 3rd Line



Chole 4th Line



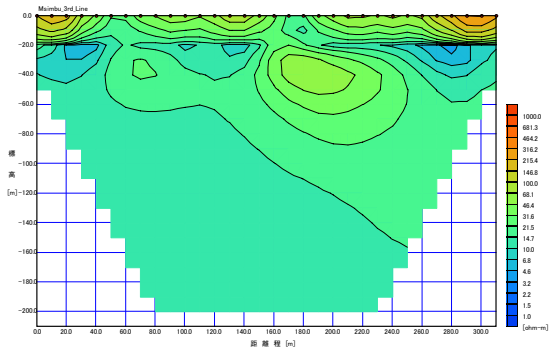
Msimbu 1st Line



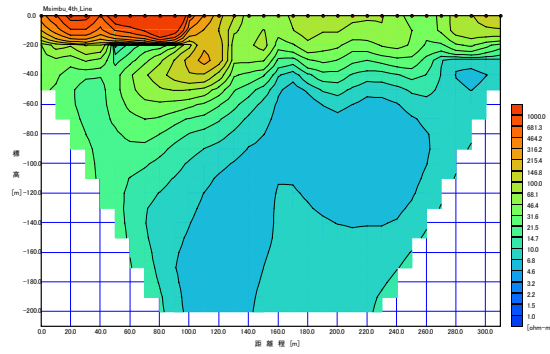
Msimbu 2nd Line

Figure A7-2 2-D Images of Groundwater Exploration Results (5/11)

Kisarawe

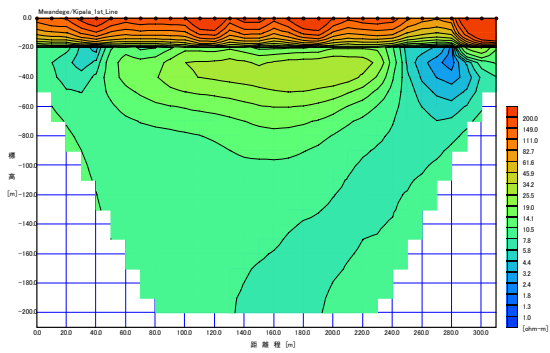


Msimbu 3rd Line

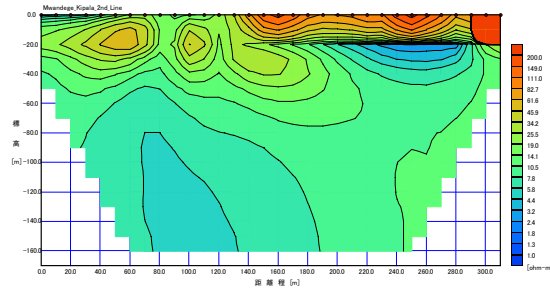


Msimbu 4th Line

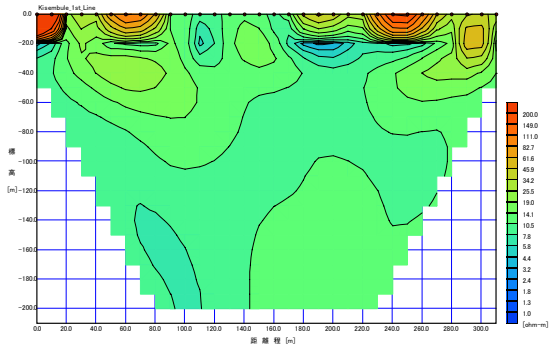
Mukuranga



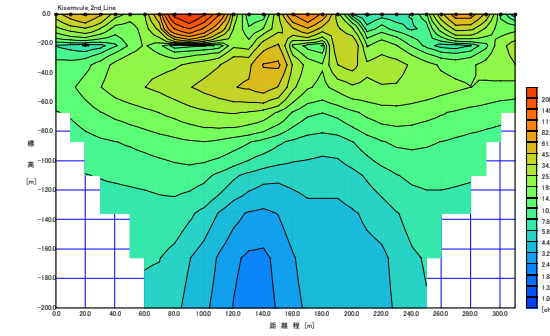
Mwandege/Kipala 1st Line



Mwandege/Kipala 2nd Line



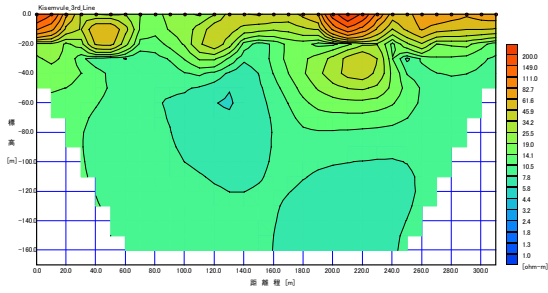
Kisemvule 1st Line



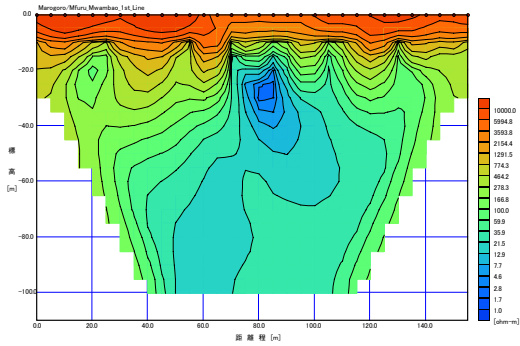
Kisemvule 2nd Line

Figure A7-2 2-D Images of Groundwater Exploration Results (6/11)

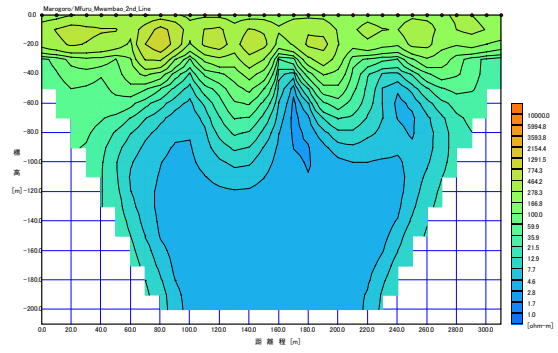
Mkuranga



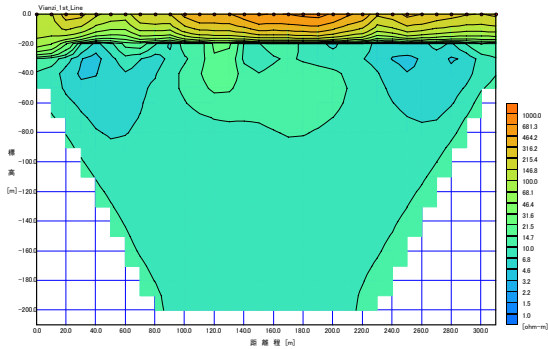
Kisemvule 3rd Line



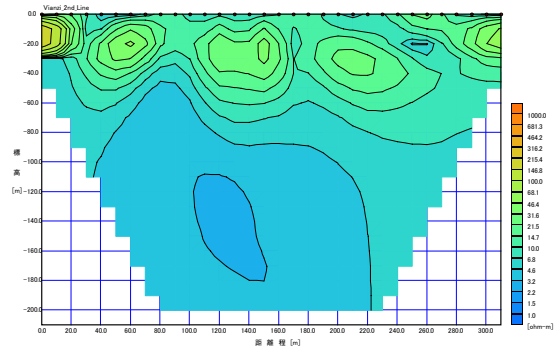
Marogoro / Mfuru Mwambao 1st Line



Marogoro / Mfuru Mwambao 2nd Line



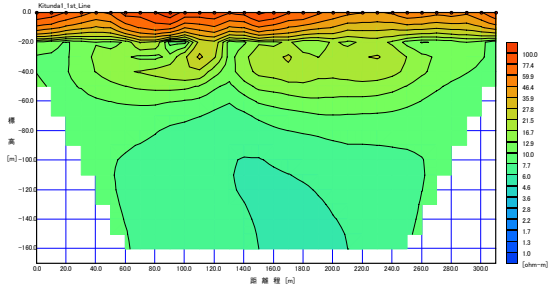
Vianzi 1st Line



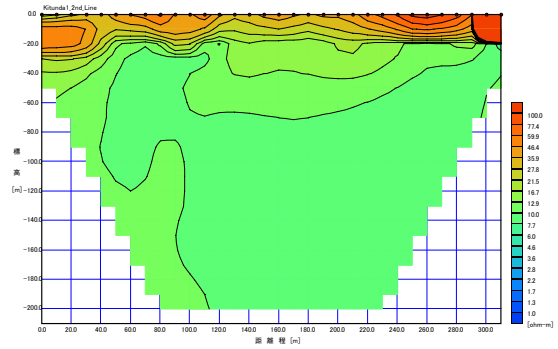
Vianzi 2nd Line

Figure A7-2 2-D Images of Groundwater Exploration Results (7/11)

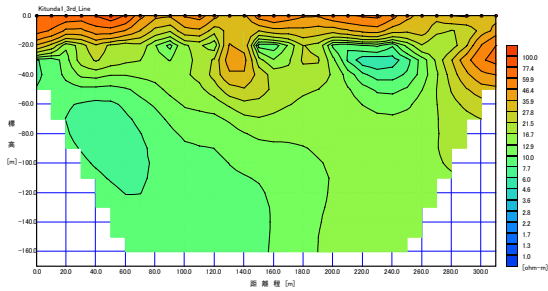
Ilala



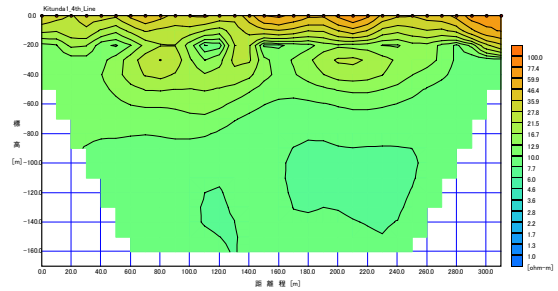
Kitunda –Kivule (1/2) 1st Line



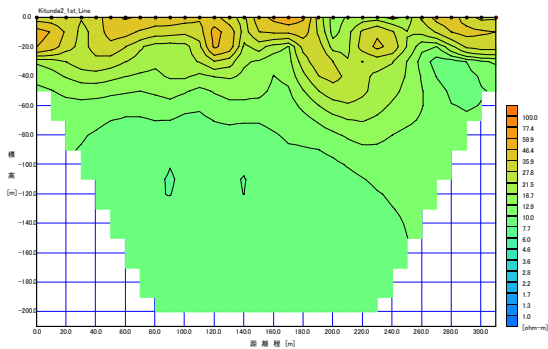
Kitunda –Kivule (1/2) 2nd Line



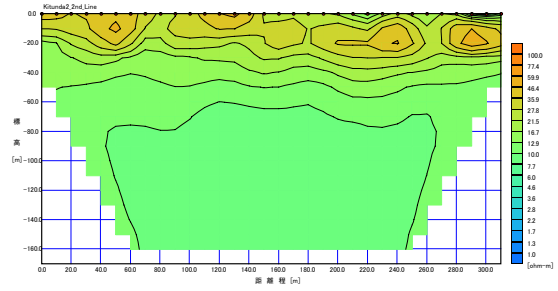
Kitunda –Kivule (1/2) 3rd Line



Kitunda –Kivule (1/2) 4th Line



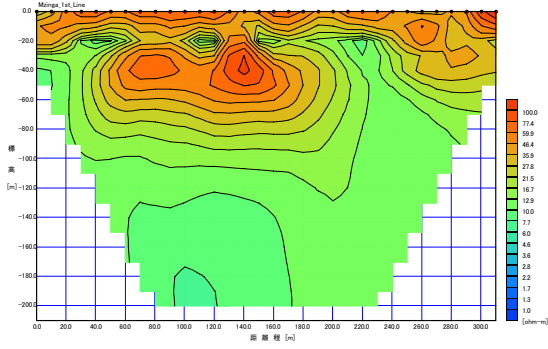
Kitunda –Kivule (2/2) 1st Line



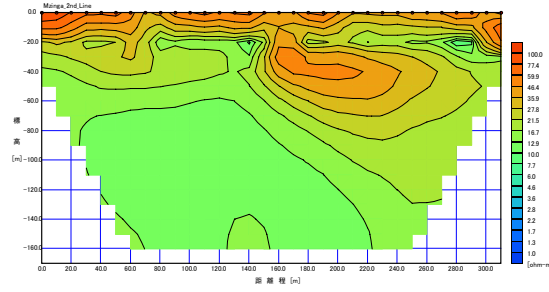
Kitunda –Kivule (2/2) 2nd Line

Figure A7-2 2-D Images of Groundwater Exploration Results (8/11)

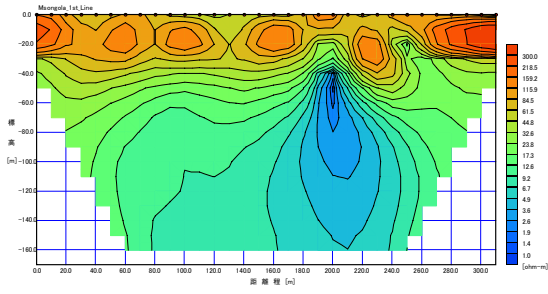
Ilala



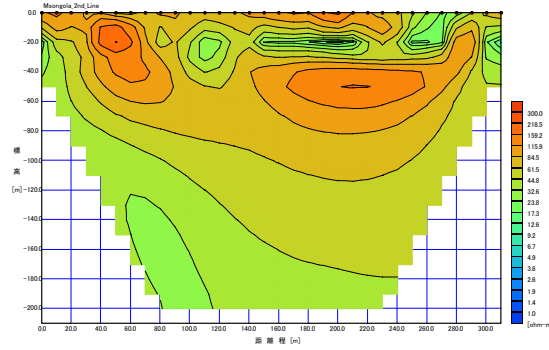
Kitunda –Mzinga 1st Line



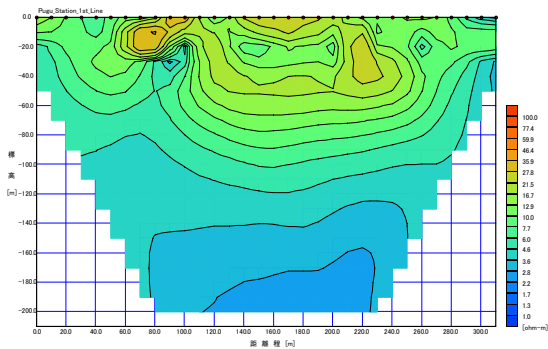
Kitunda –Mzinga 2nd Line



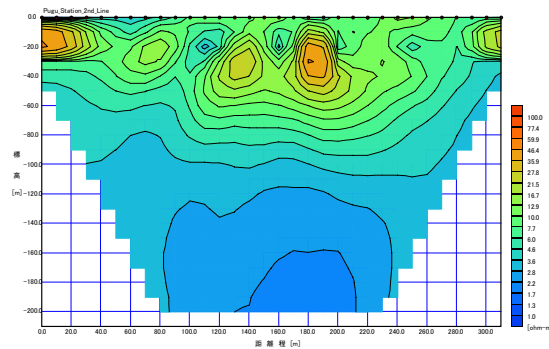
Msongola 1st Line



Msongola 2nd Line



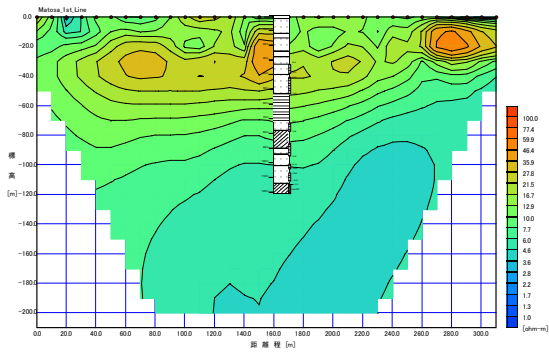
Pugu Station 1st Line



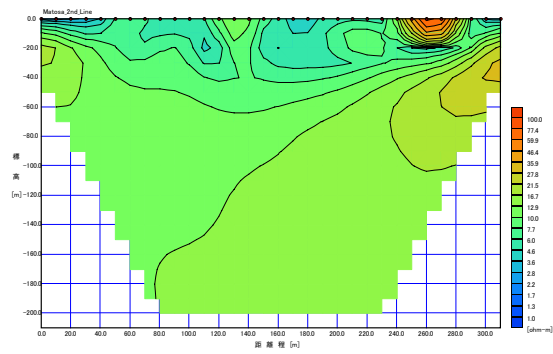
Pugu Station 2nd Line

Figure A7-2 2-D Images of Groundwater Exploration Results (9/11)

Kinondoni

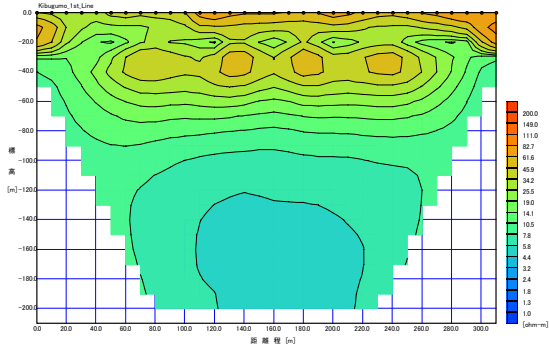


Matosa 1st Line

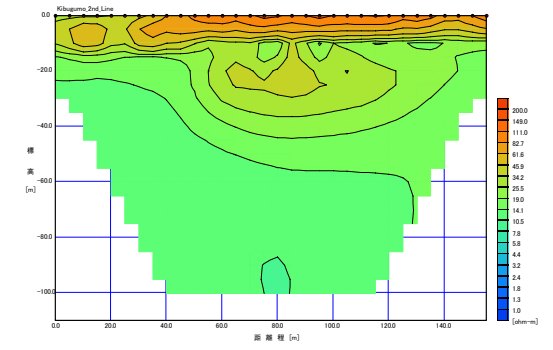


Matosa 2nd Line

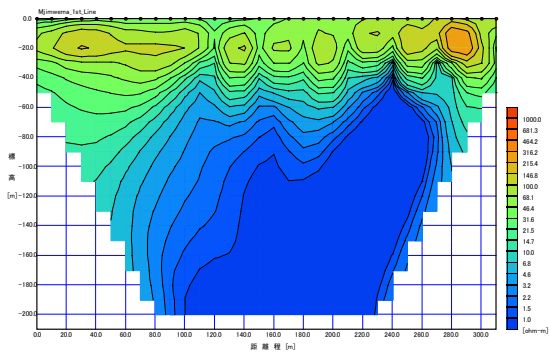
Temeke



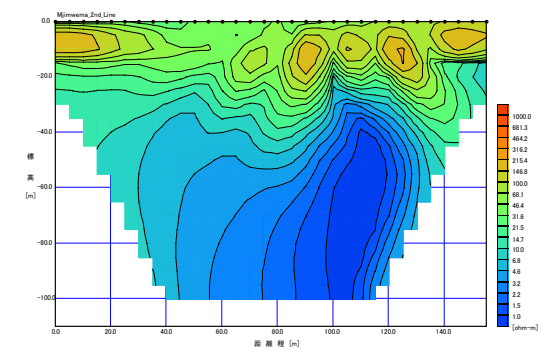
Kibugumo 1st Line



Kibugumo 2nd Line



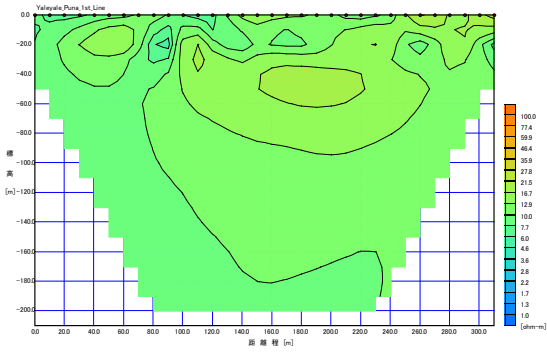
Mjimwema-Salanga 1st Line



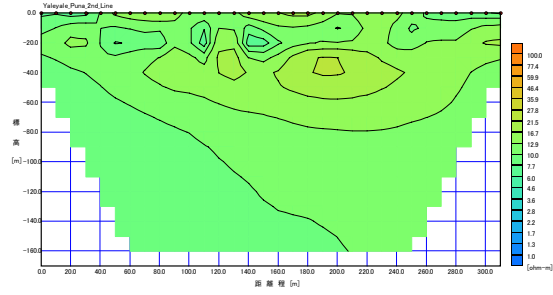
Mjimwema-Salanga 2nd Line

Figure A7-2 2-D Images of Groundwater Exploration Results (10/11)

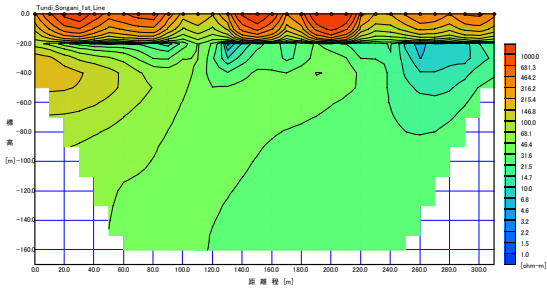
Temeke



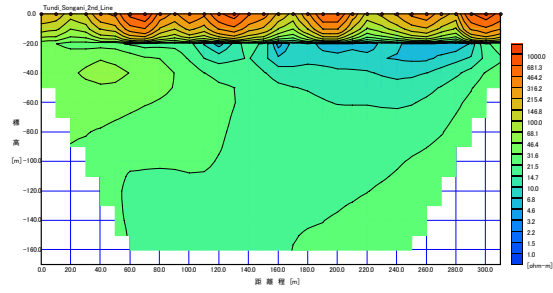
Yaleyale Puna 1st Line



Yaleyale Puna 2nd Line



Tundwi Songani 1st Line



Tundwi Songani 2nd Line

Figure A7-2 2-D Images of Groundwater Exploration Results (11/11)

Table A7-2 Proposed Test Well Locations in Detailed Design Study

District/ Municipality	Village	Latitude			Longitude			Elev. m	Depth m		
		d	m	s	d	m	s				
Bagamoyo	Kibindu No. 1	S	5	59	29.78	E	37	55	41.47	403	100
	No. 2	S	5	59	35.77	E	37	55	34.12	399	100
Mkuranga	Mwandege/Kipala	S	6	58	19.14	E	39	17	25.70	83	80
	Kisemvule No. 1	S	7	2	13.75	E	39	15	53.68	95	80
		No. 2	S	7	2	9.75	E	39	16	4.09	92
	Marogoro/Mfuru Mwambao	S	7	5	18.73	E	39	22	39.76	37	50
	Vianzi	S	7	2	43.56	E	39	19	44.89	107	120
Ilala	Kitunda-Kivule(1/2) No. 1	S	6	55	0.94	E	39	11	0.78	54	80
		No. 2	S	6	54	59.66	E	39	10	53.97	50
	Kitunda-Kivule(2/2)	S	6	56	25.97	E	39	10	38.64	51	80
	Kitunda-Mzinga No. 1	S	6	54	35.8	E	39	11	47.28	51	80
		No. 2	S	6	54	37.07	E	39	11	51.14	51
	Msongola	S	6	57	56.06	E	39	10	29.89	59	80
	Pugu Station	S	6	52	48.76	E	39	7	44.84	90	80
Temeke	Kibugumo	S	6	52	14.38	E	39	22	32.17	11	50
	Mjimwema-Salanga	S	6	51	11.69	E	39	20	38.65	19	50
	Yaleyale Puna	S	7	2	50.67	E	39	31	41.4	28	80
	Tundwi Songani No. 1	S	7	6	11.9	E	39	25	43.17	28	80
		No. 2	S	7	6	8.51	E	39	25	39.51	26

(2) Test Well Drilling and Pumping Test Data

Results of Test Well Drilling and Pumping Test

1. Test Well Drilling Point

Test wells were drilled at five sites as shown in Table A6-3.

Table A7-3 Test Wells Drilling Site

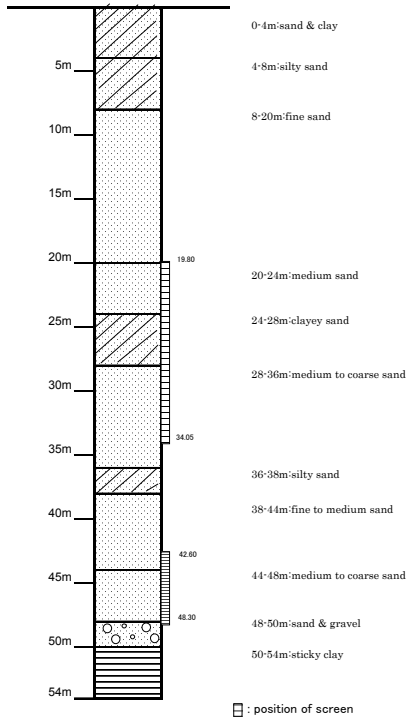
District/ Municipality	Village	Latitude			Longitude			Elevation (m)	Target Aquifer	Derilled Depth (m)	
		d	m	s	d	m	s				
Kibaha	Minazi Mikinda(1/2) 1st	S	6	48	46.24	E	38	39	15.23	40	
	Minazi Mikinda(1/2) 2nd	S	6	48	37.86	E	38	39	24.06	37	Neogene
	Minazi Mikinda(2/2) Kitomondo 1st	S	6	50	47.56	E	38	38	5.89	40	
	Minazi Mikinda(2/2) Kitomondo 2nd	S	6	51	30.17	E	38	37	31.85	41	Neogene
Kisarawe	Chole	S	7	20	57.7	E	38	39	36.32	356	Cretaceous
	Msimbu 1st	S	7	6	30.74	E	39	1	29.47	147	
	Msimbu 2nd	S	7	6	30.84	E	39	1	29.88	147	Cretaceous
Kinondoni	Matosa	S	6	44	39.29	E	39	7	48.93	125	Neogene

2. Results of Test Well Drilling

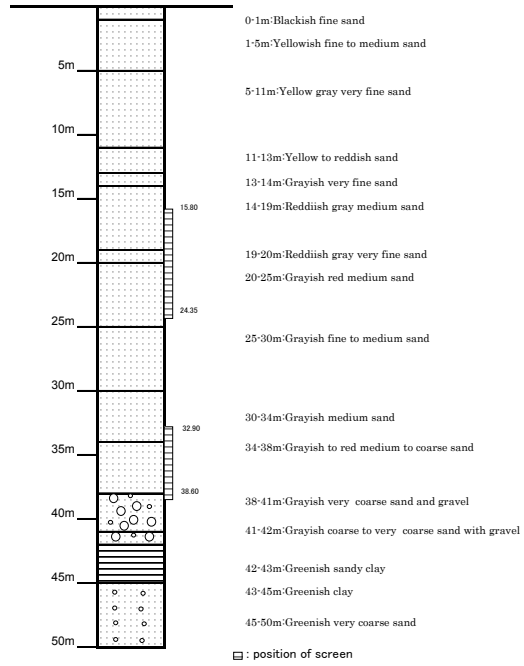
Lithological columns of test wells are shown in Figure A6-3.

Appendix 7 Other Relevant Data

Minazi Mikinda (2/2)/Kitomondo (1st) drilled depth=54m

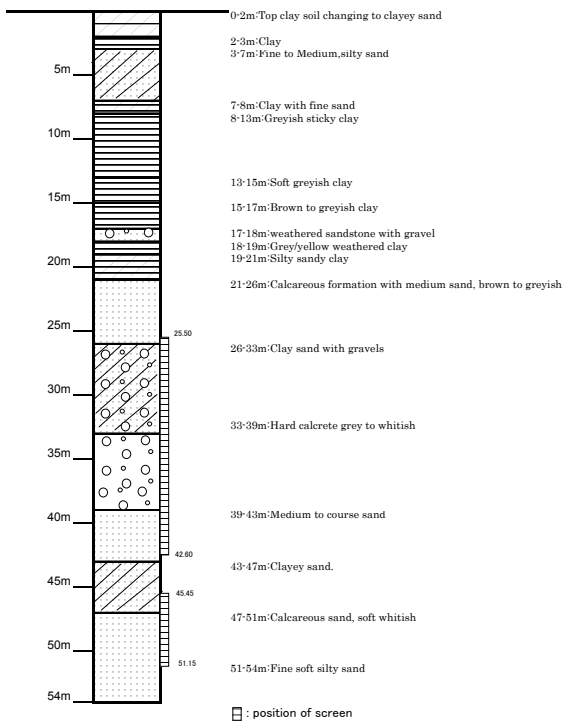


Minazi Mikinda (2/2)/Kitomondo (2nd) drilled depth=50m

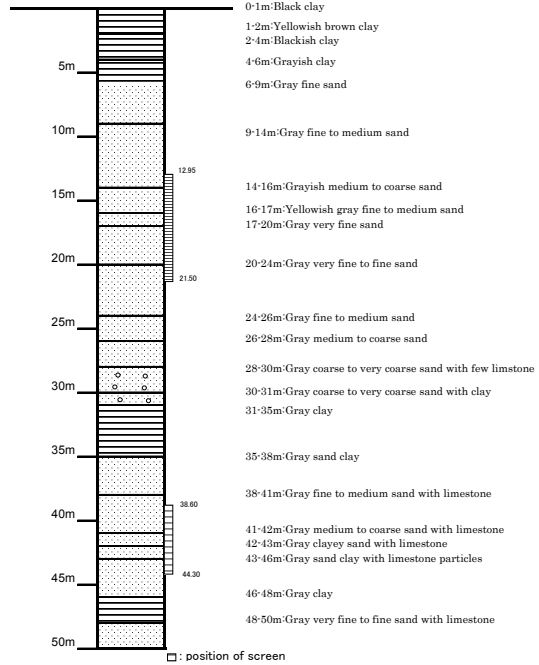


Minazi Mikinda(1/2) 1st & 2nd Test BH

Minazi Mikinda (1/2) (1st) drilled depth=54m



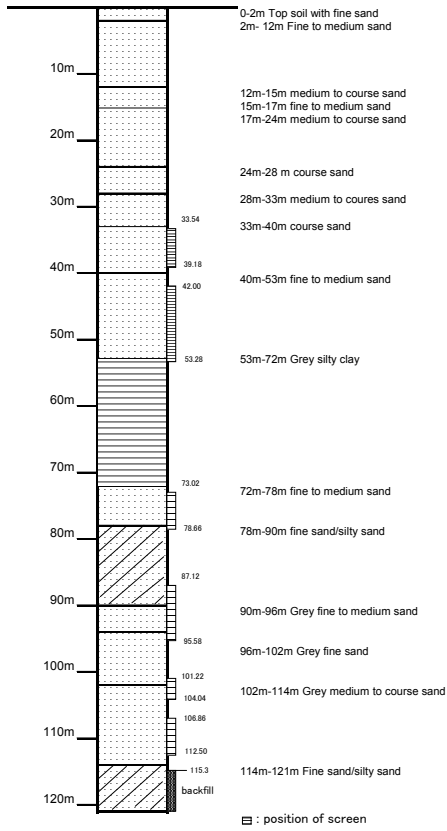
Minazi Mikinda (1/2) (2nd) drilled depth=50m



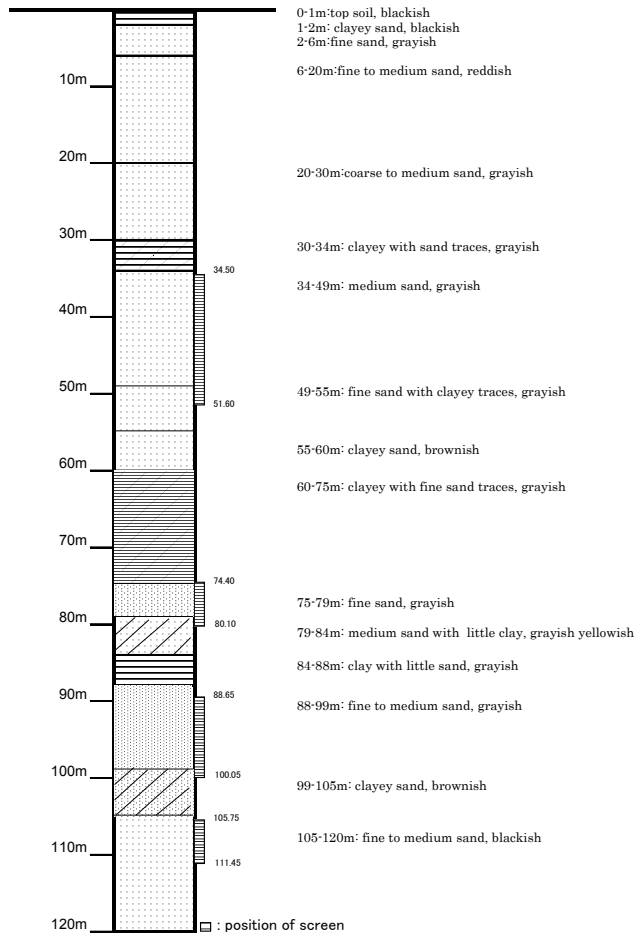
Minazi Mikinda (2/2) /Kitomondo 1st & 2nd Test BH

Figure A7-3

Matosa
1st drilled depth=121m



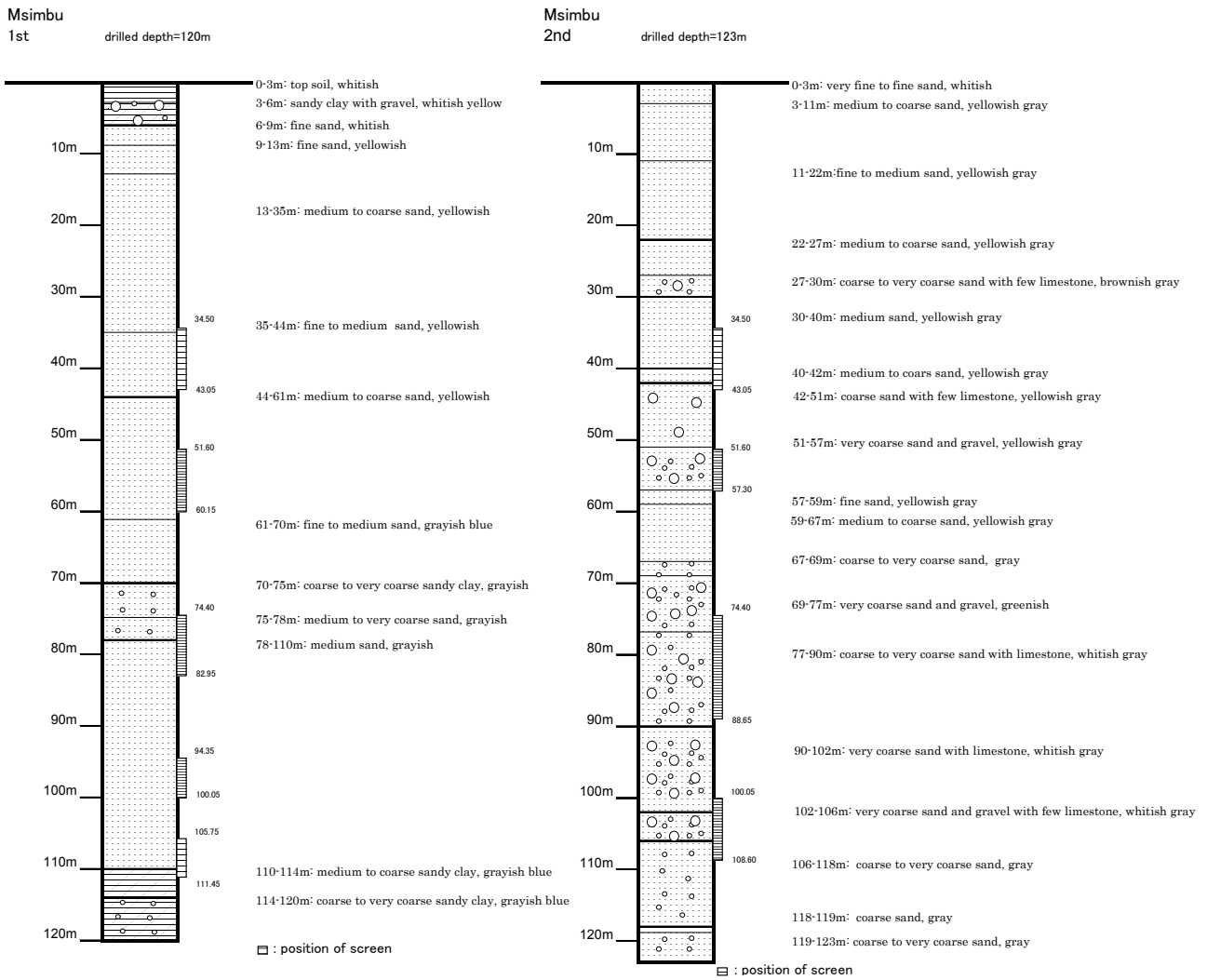
Matosa
2nd drilled depth=120m



Matosa 1st & 2nd Test BH

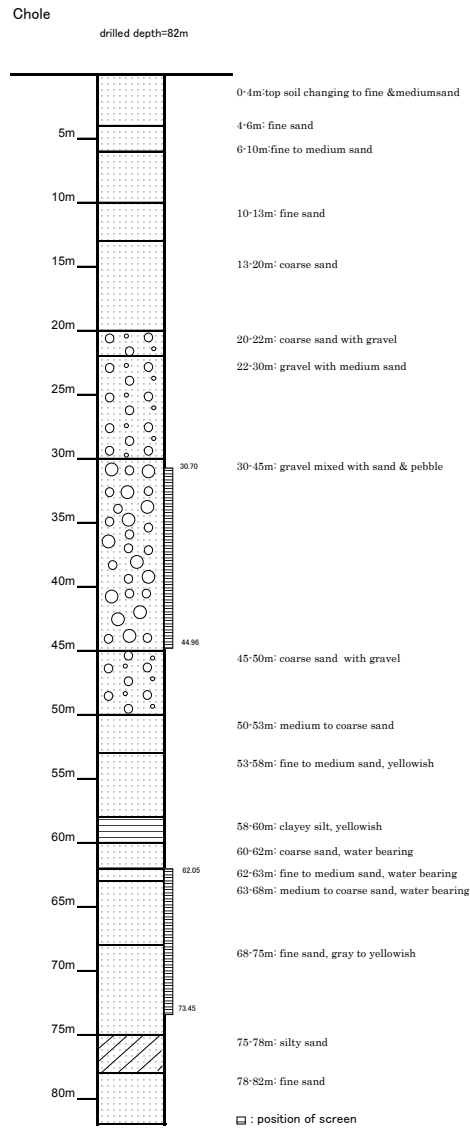
Figure A7-3

Appendix 7 Other Relevant Data



Msimbu 1st & 2nd Test BH

Figure A7-3



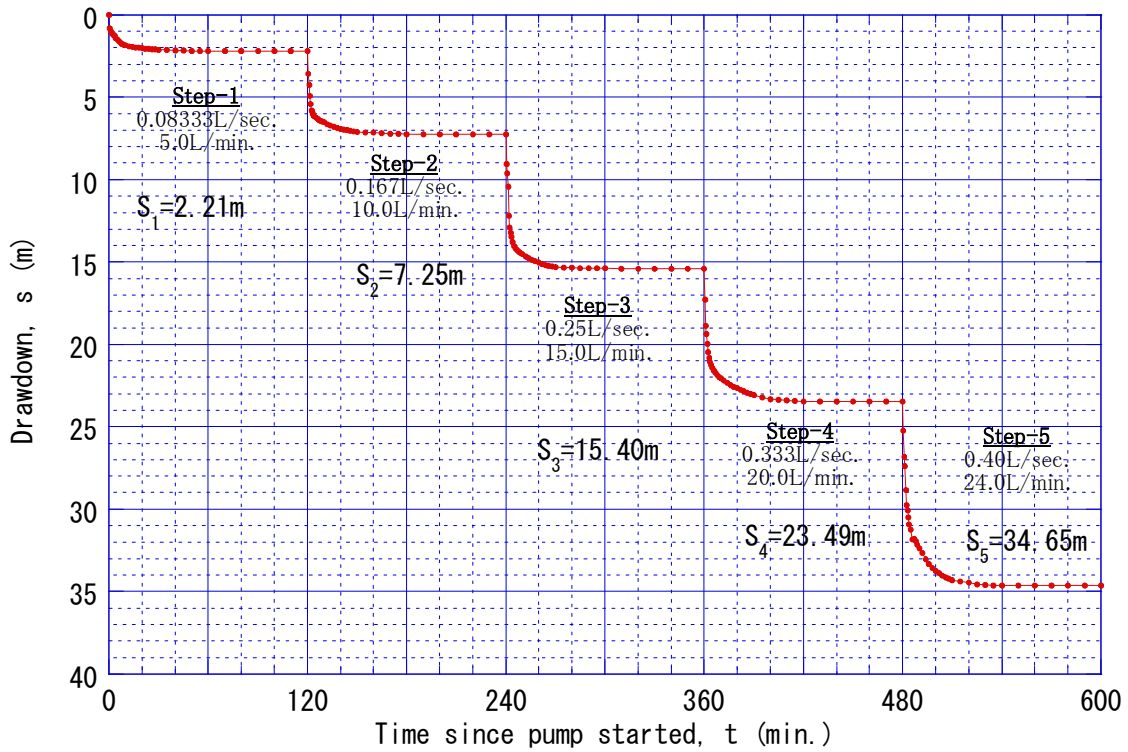
Chole Test BH

Figure A7-3

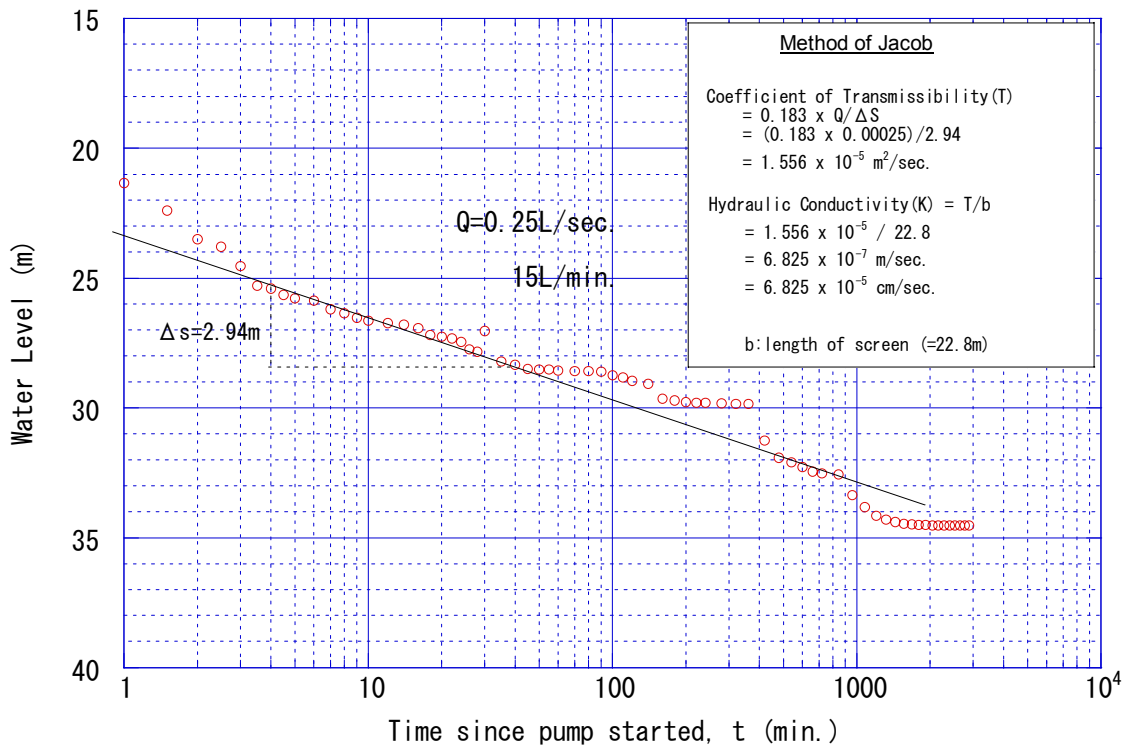
3. Results of Pumping test

After completion of drilling, careen and casing were installed for pumping test. Pumping test is composed of step drawdown test, constant discharge test and recovery test. The results are shown in Figure A6-4.

A water sample was collected at the final stage of the constant discharge test. Results of water quality analyses is shown in Table 3.6 in Chapter 3 of the report.

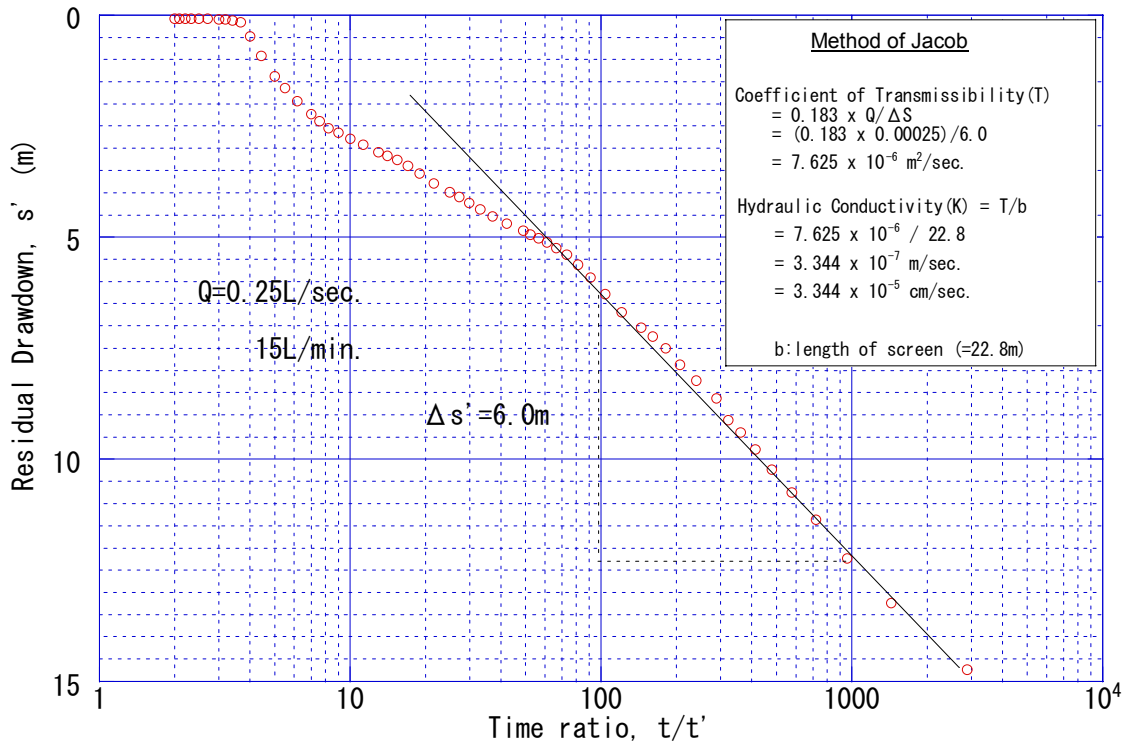


Step-Drawdown Test MinaziMikinda(1/2) 1st BH

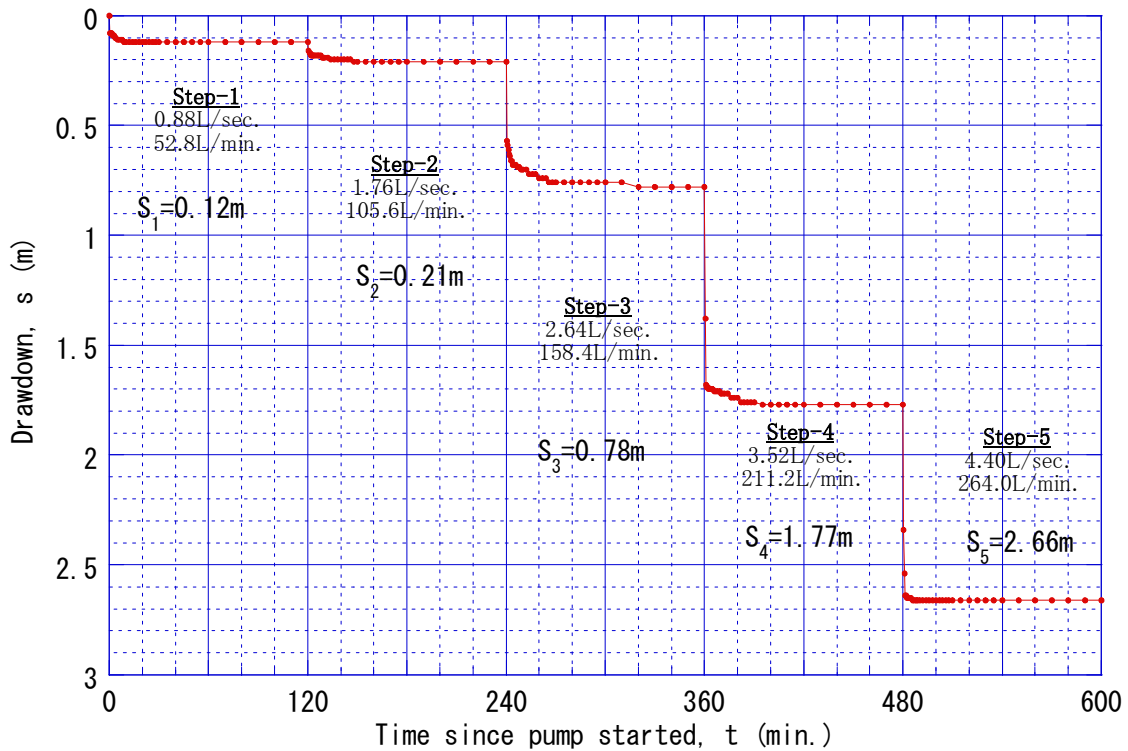


Constant-Discharge Test MinaziMikinda(1/2) 1st BH

Figure A7-4

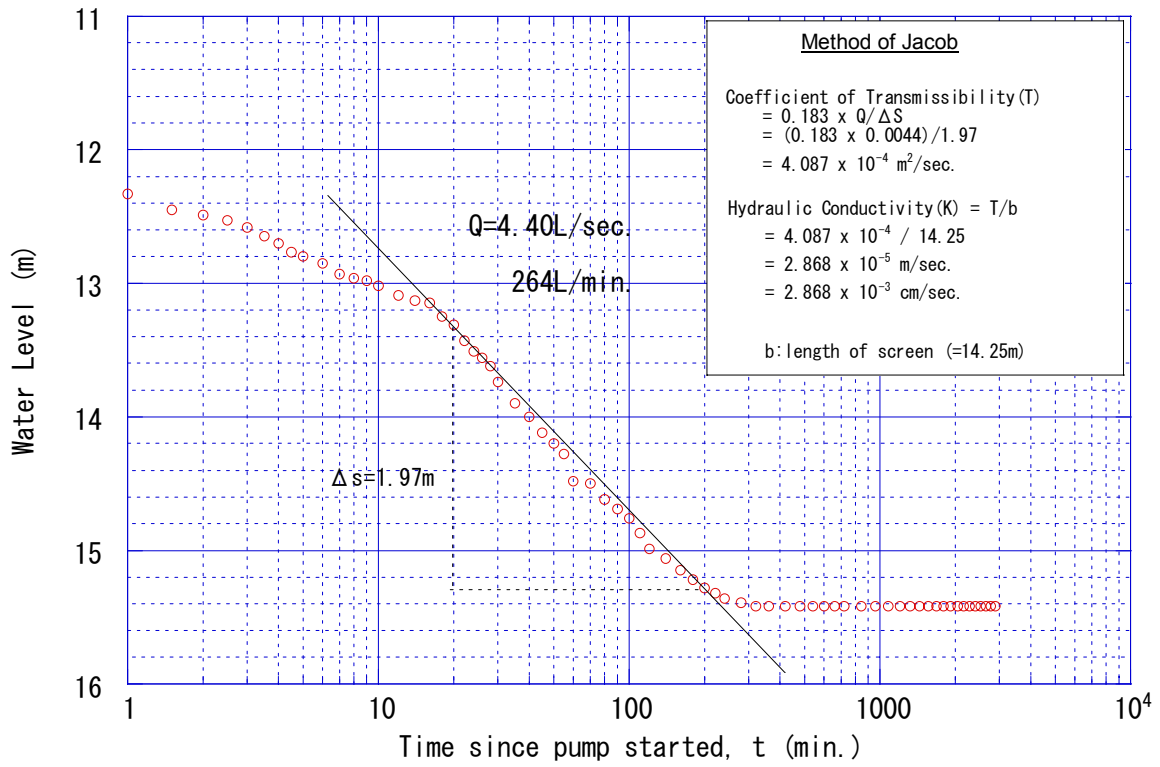


Recovery of Constant-Discharge Test
Minazi Mikinda(1/2) 1st BH

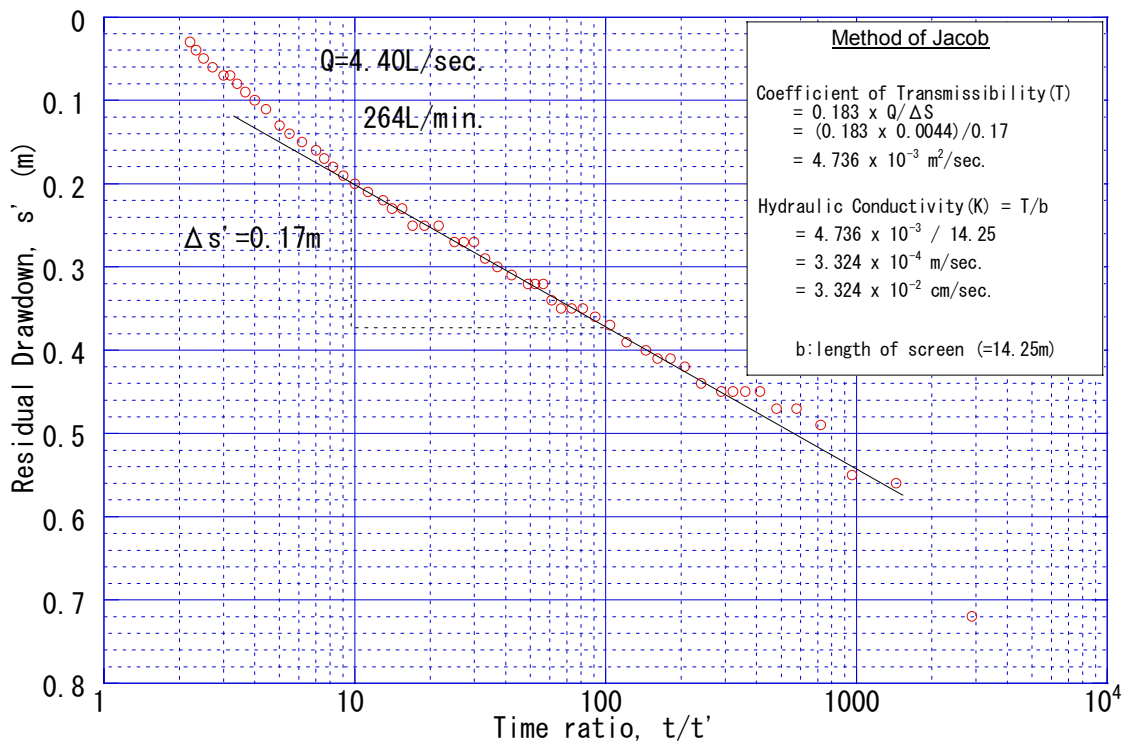


Step-Drawdown Test Minazi Mikinda(1/2) 2nd BH

Figure A7-4

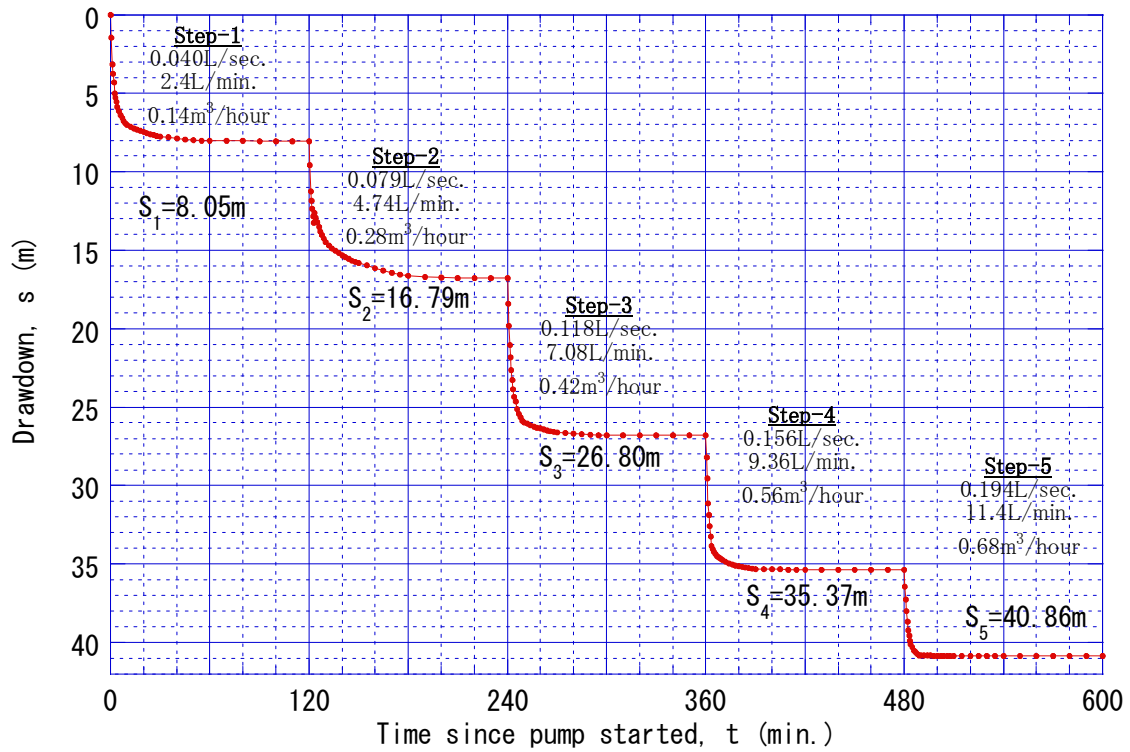


Constant-Discharge Test Minazi Mikinda(1/2) 2nd BH

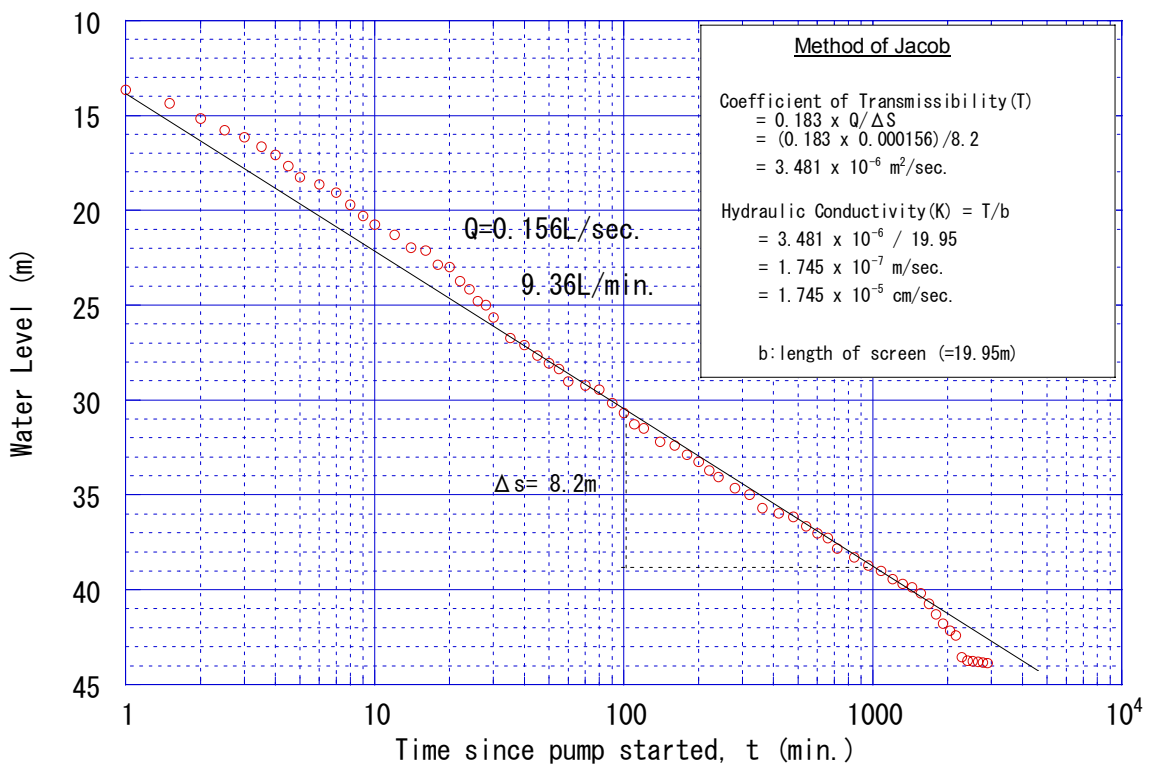


Recovery of Constant-Discharge Test
 Minazi Mikinda(1/2) 2nd BH

Figure A7-4

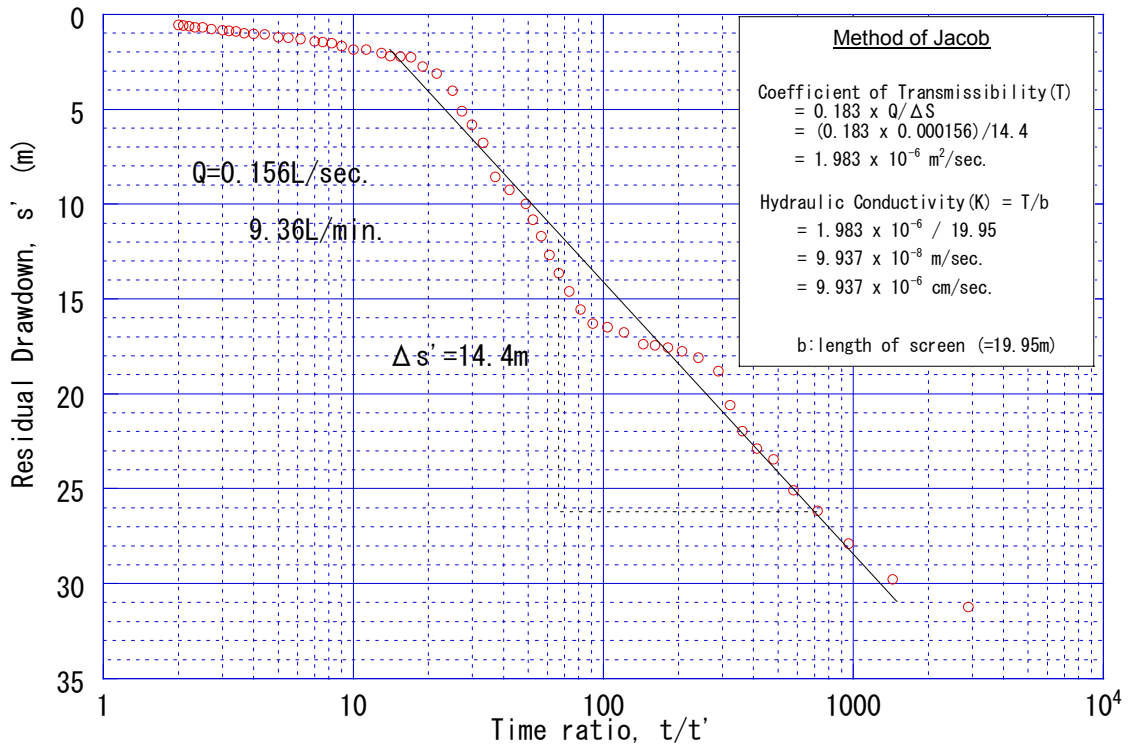


Step-Drawdown Test MinaziMikinda (2/2) /Kitomondo 1st BH

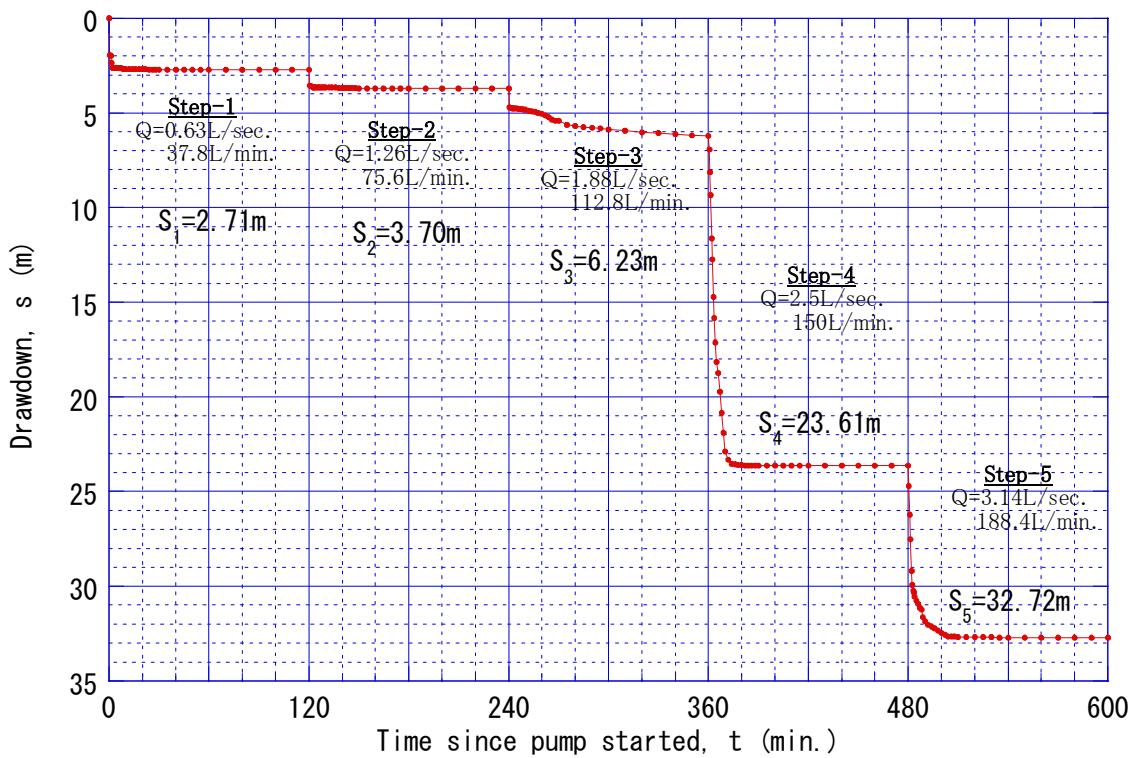


Constant-Discharge Test MinaziMikinda (2/2) /Kitomondo 1st BH

Figure A7-4

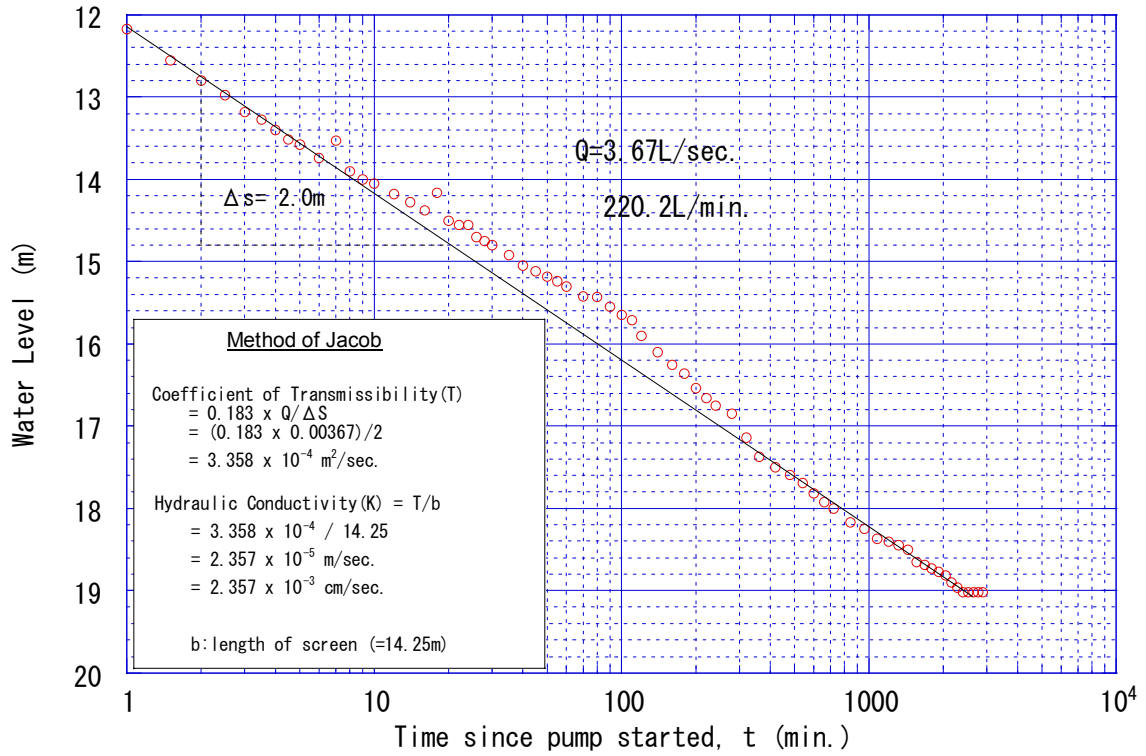


Recovery of Constant-Discharge Test
 Minazi Mikinda(2/2)/Kitomond 1st BH

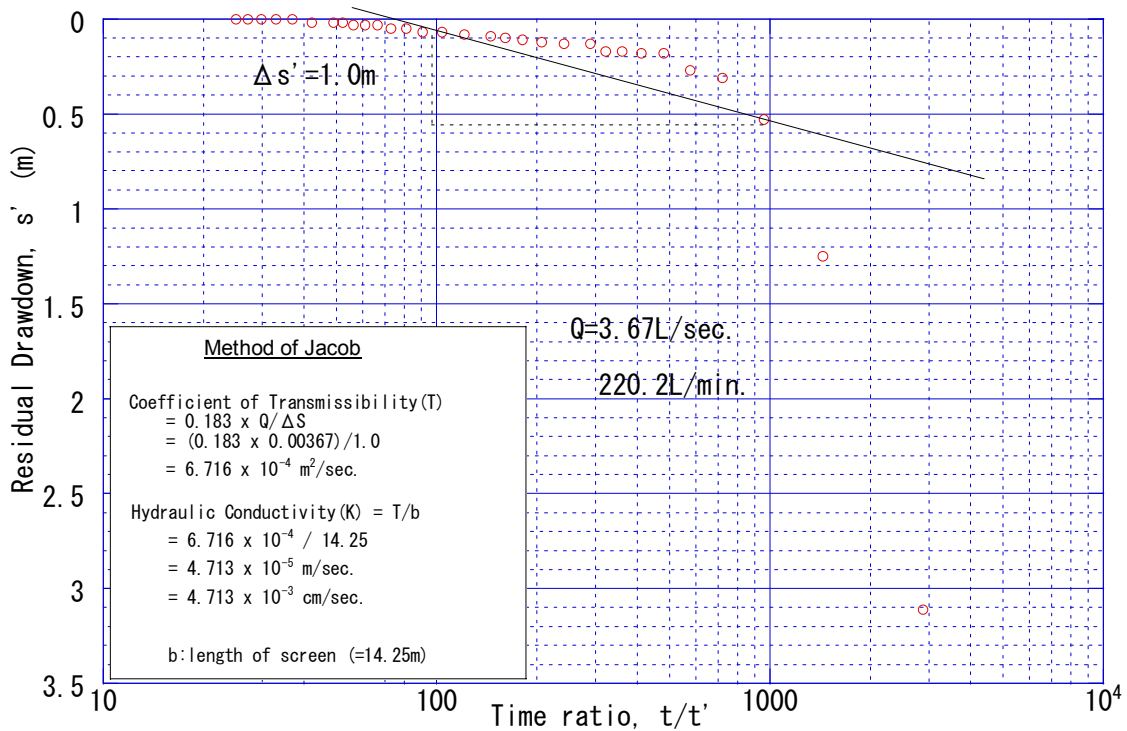


Step-Drawdown Test Minazi Mikinda(2/2)/Kitomondo 2nd BH

Figure A7-4

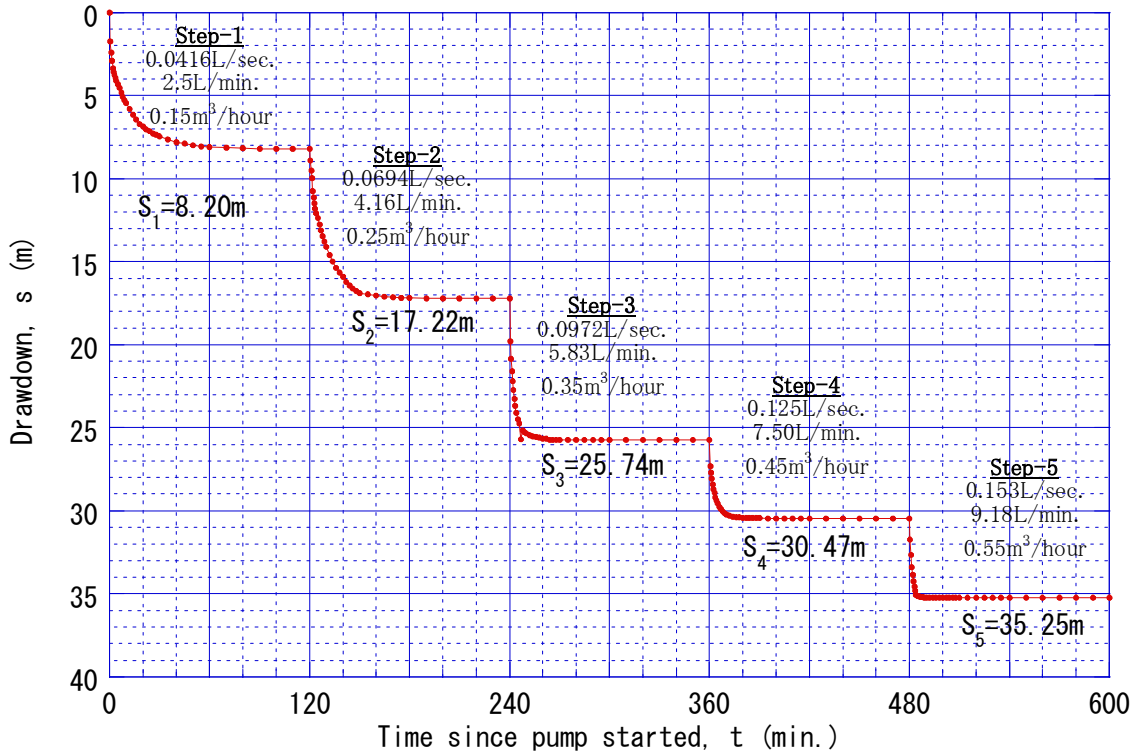


Constant-Discharge Test Minazi Mikinda (2/2) / Kitomondo 2nd BH

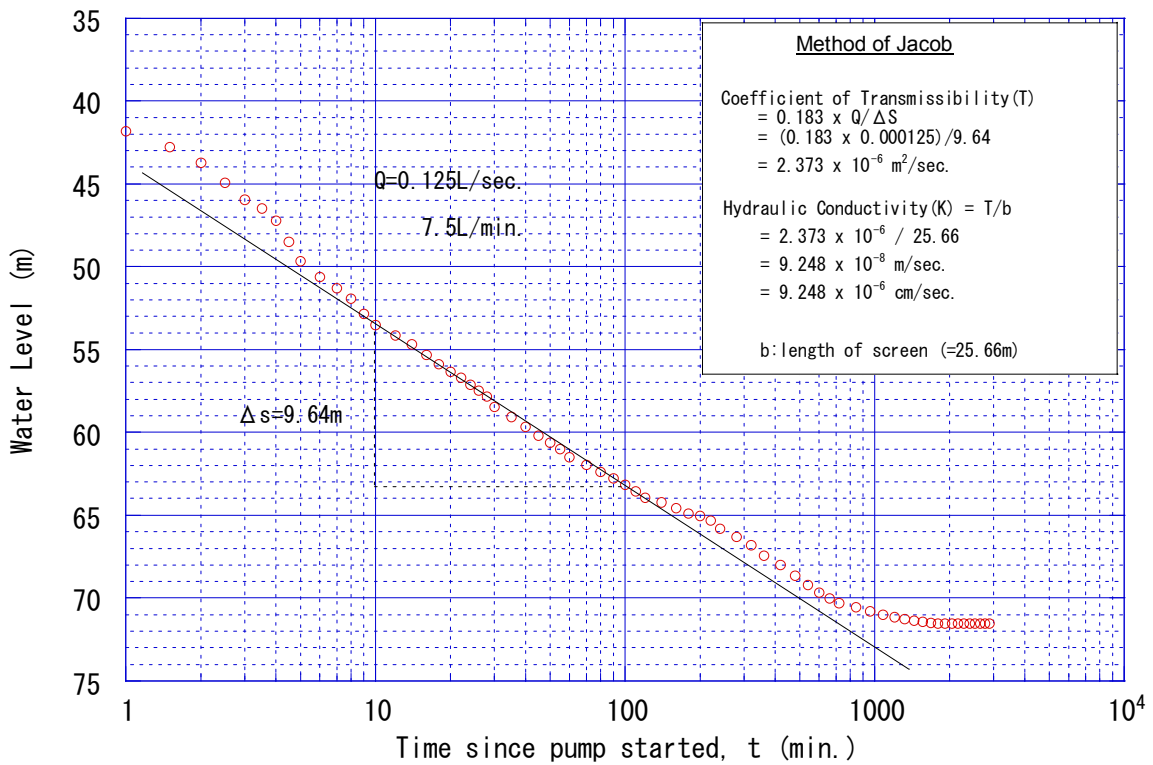


Recovery of Constant-Discharge Test
 Minazi Mikinda (2/2) / Kitomond 2nd BH

Figure A7-4

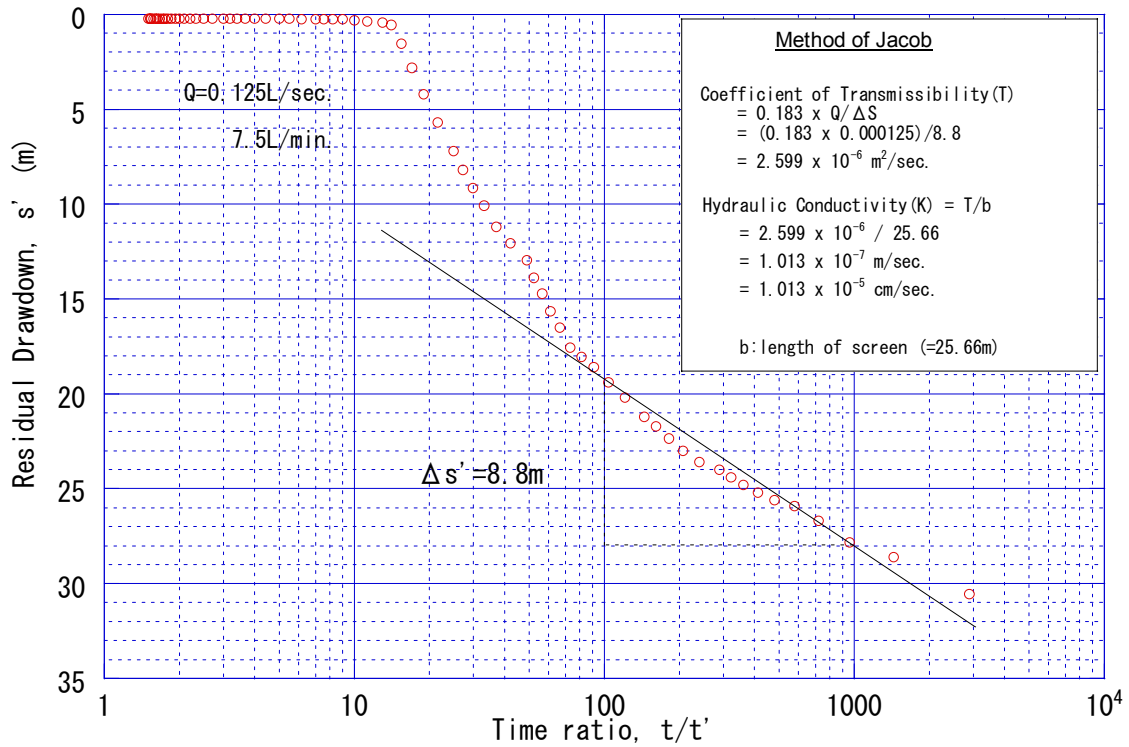


Step-Drawdown Test Chole

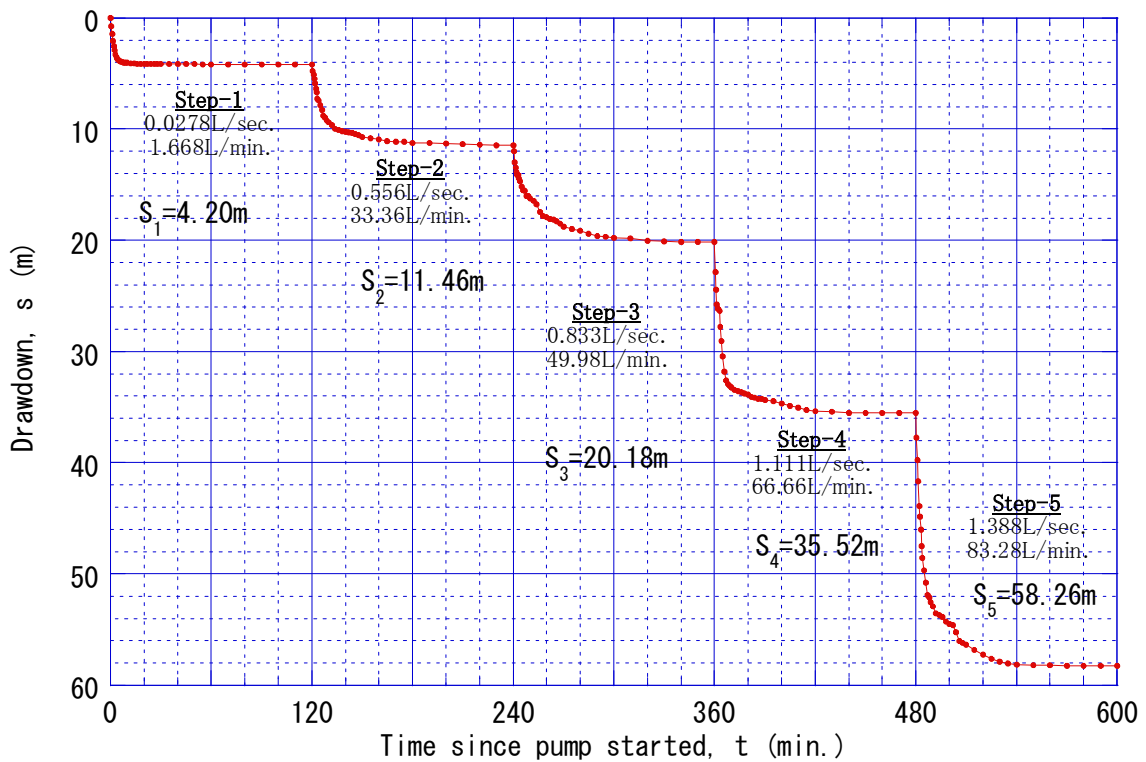


Constant-Discharge Test Chole

Figure A7-4



Recovery of Constant-Discharge Test Chole



Step-Drawdown Test Msimbu

Figure A7-4

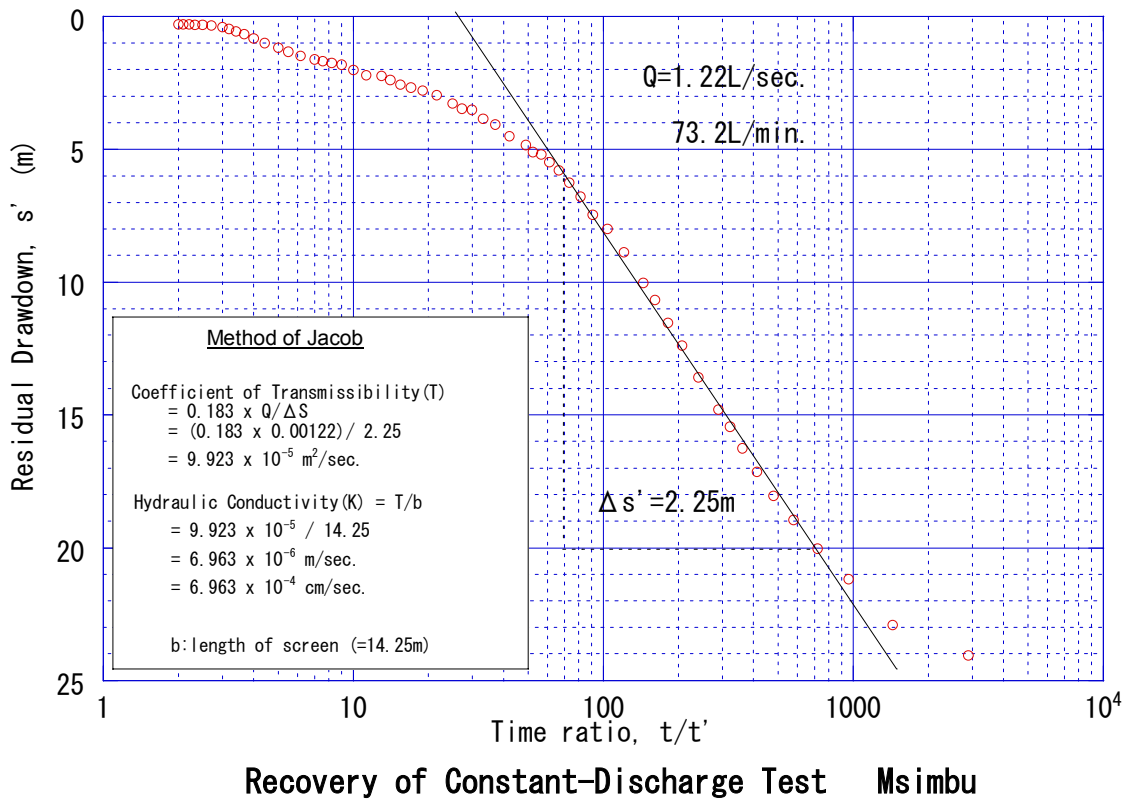
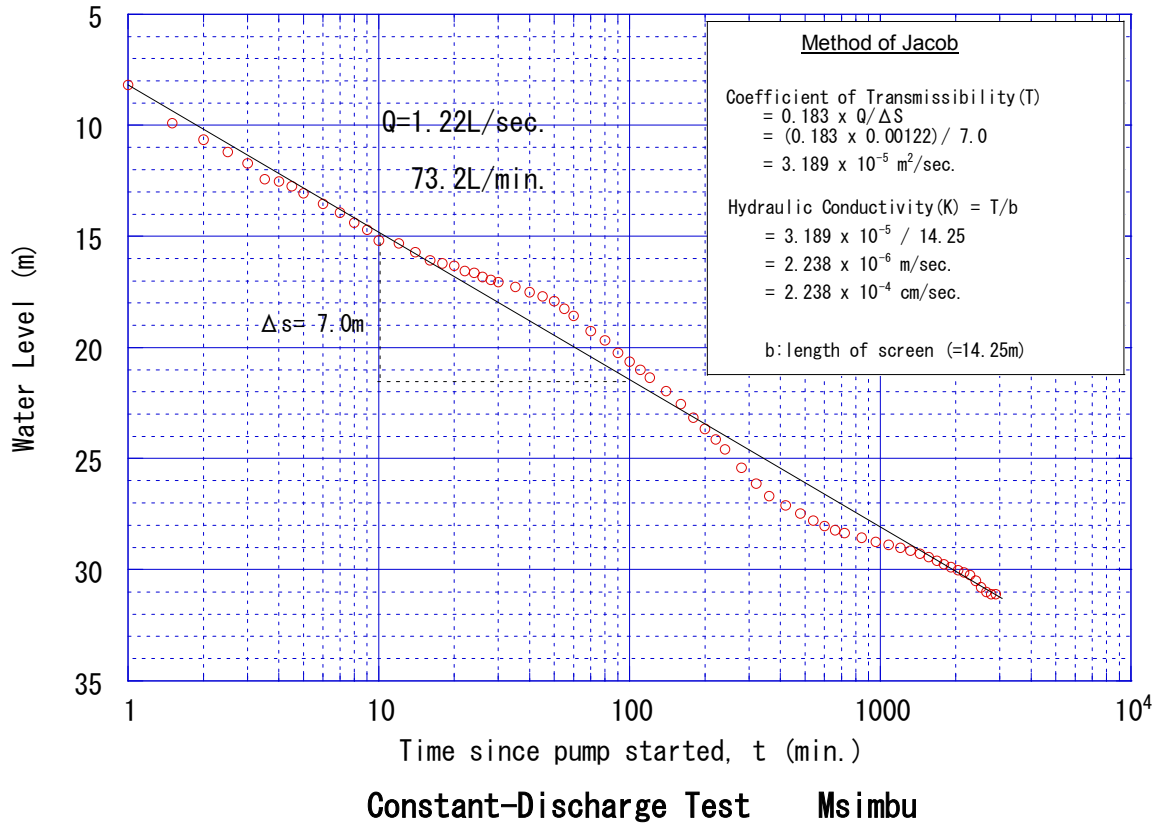


Figure A7-4

No.	Title	Form	Original/copy	Publisher	Year
1	National Strategy for Growth and Reduction of Poverty (NSGRP)	Document	Copy	Vice President's Office	April 2005
2	National Water Policy	Document	Copy	Min. of Water and Livestock Development	July 2002
3	National Water Sector Development Strategy- Circulation Draft	Document	Copy	Min. of Water and Livestock Development	June 2004
4	Tanzania National Projections – Volume VIII	Document	Original	National Bureau of Statistic, Min. of Planning, Economy and Employment	February 2006
5	Village and Street Statistics – Dar es Salaam Region – Volume VII	Document	Original	National Bureau of Statistic, Min. of Planning, Economy and Employment	June 2005
6	Village and Street Statistics – Pwani Region – Volume VII	Document	Original	National Bureau of Statistic, Min. of Planning, Economy and Employment	June 2005
7					
8					
9					
10					
11					
12					
13					
14					