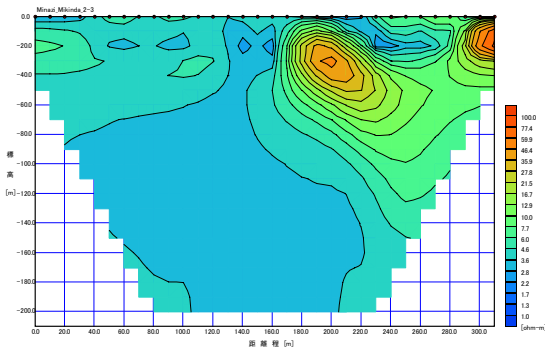
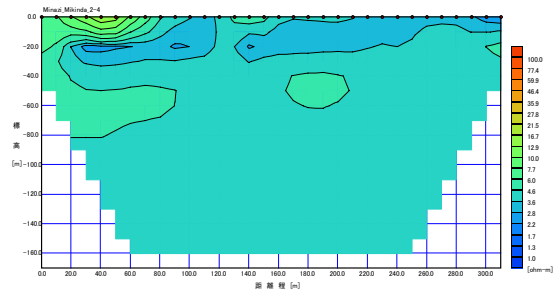


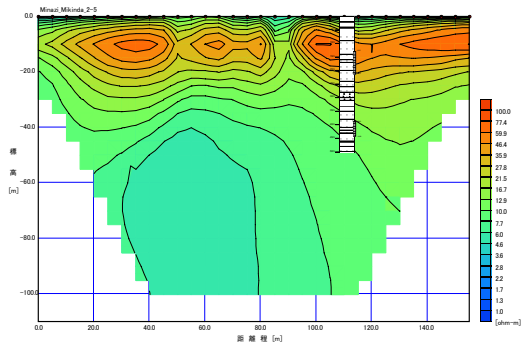
Kibaha



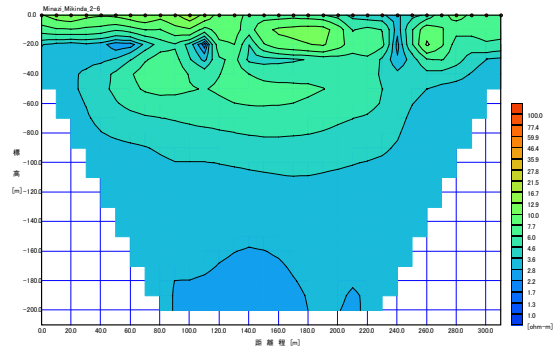
Minazi Mikinda(1/2) 2-3rd Line



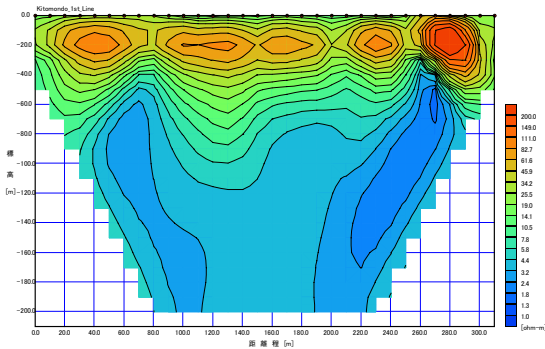
Minazi Mikinda(1/2) 2-4th Line



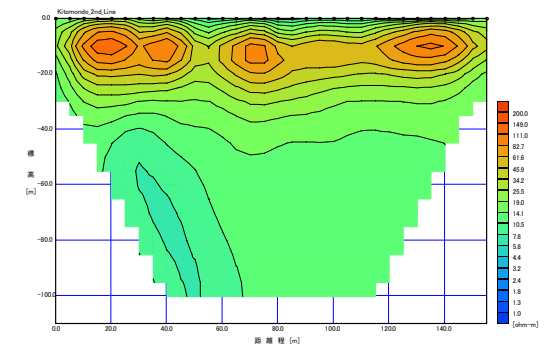
Minazi Mikinda(1/2) 2-5th Line



Minazi Mikinda(1/2) 2-6th Line



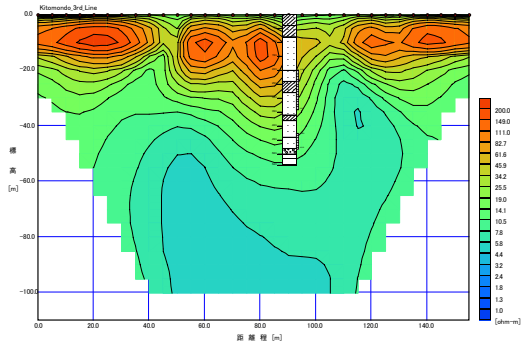
Minazi Mikinda (2/2) / Kitomondo 1st Line



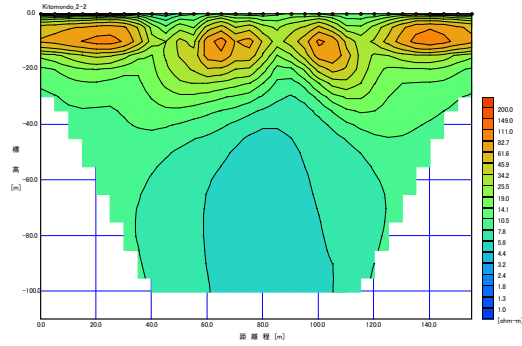
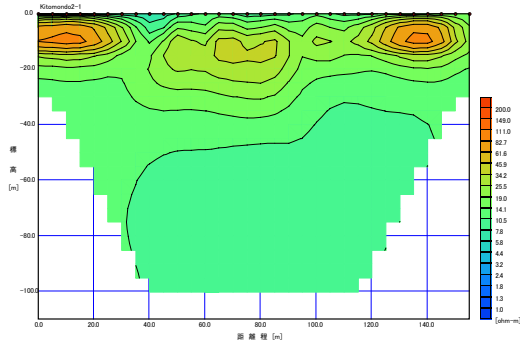
Minazi Mikinda (2/2) / Kitomondo 2nd Line

図-2 比抵抗二次元断面図 (3/11)

Kibaha

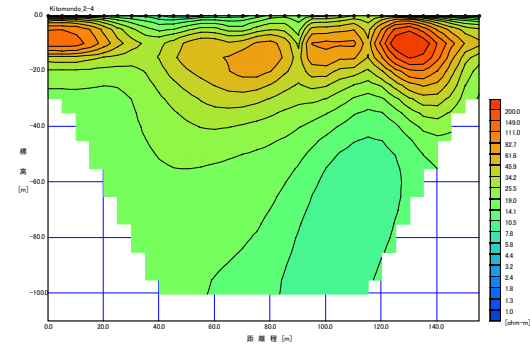
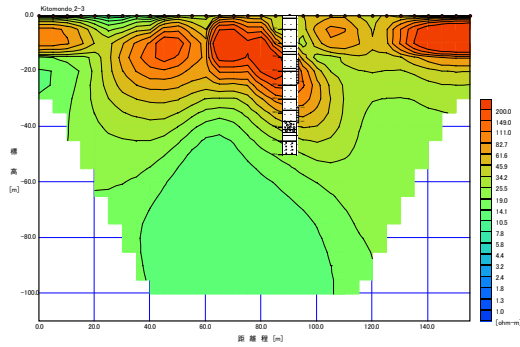


Minazi Mikinda (2/2) / Kitomondo 3rd Line



Minazi Mikinda(2/2) / Kitomondo 2-1st Line

Minazi Mikinda(2/2) / Kitomondo 2-2nd Line

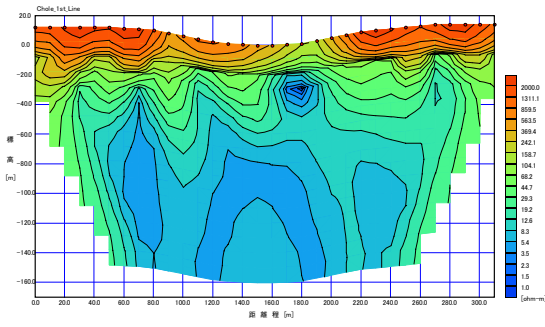


Minazi Mikinda (2/2) / Kitomondo 2-3rd Line

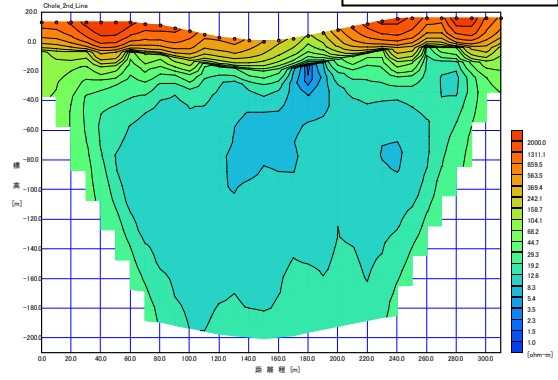
Minazi Mikinda (2/2) / Kitomondo 2-4th Line

図-2 比抵抗二次元断面図 (4/11)

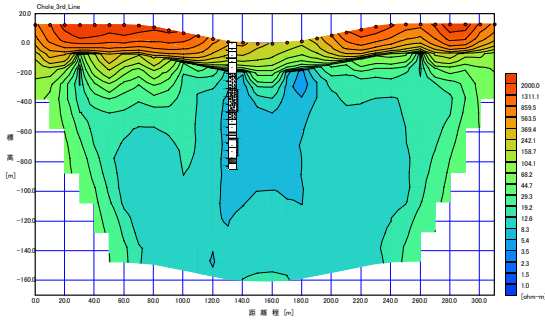
Kisarawe



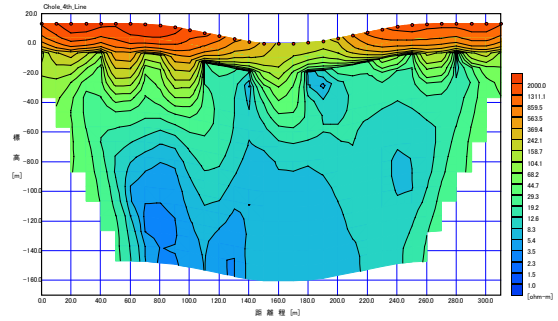
Chole 1st Line



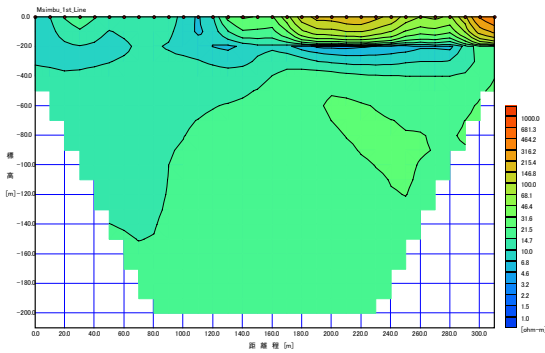
Chole 2nd Line



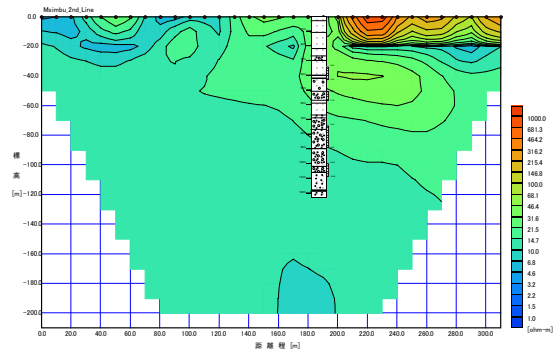
Chole 3rd Line



Chole 4th Line



Msimbu 1st Line



Msimbu 2nd Line

図一 比抵抗二次元断面図 (5/11)

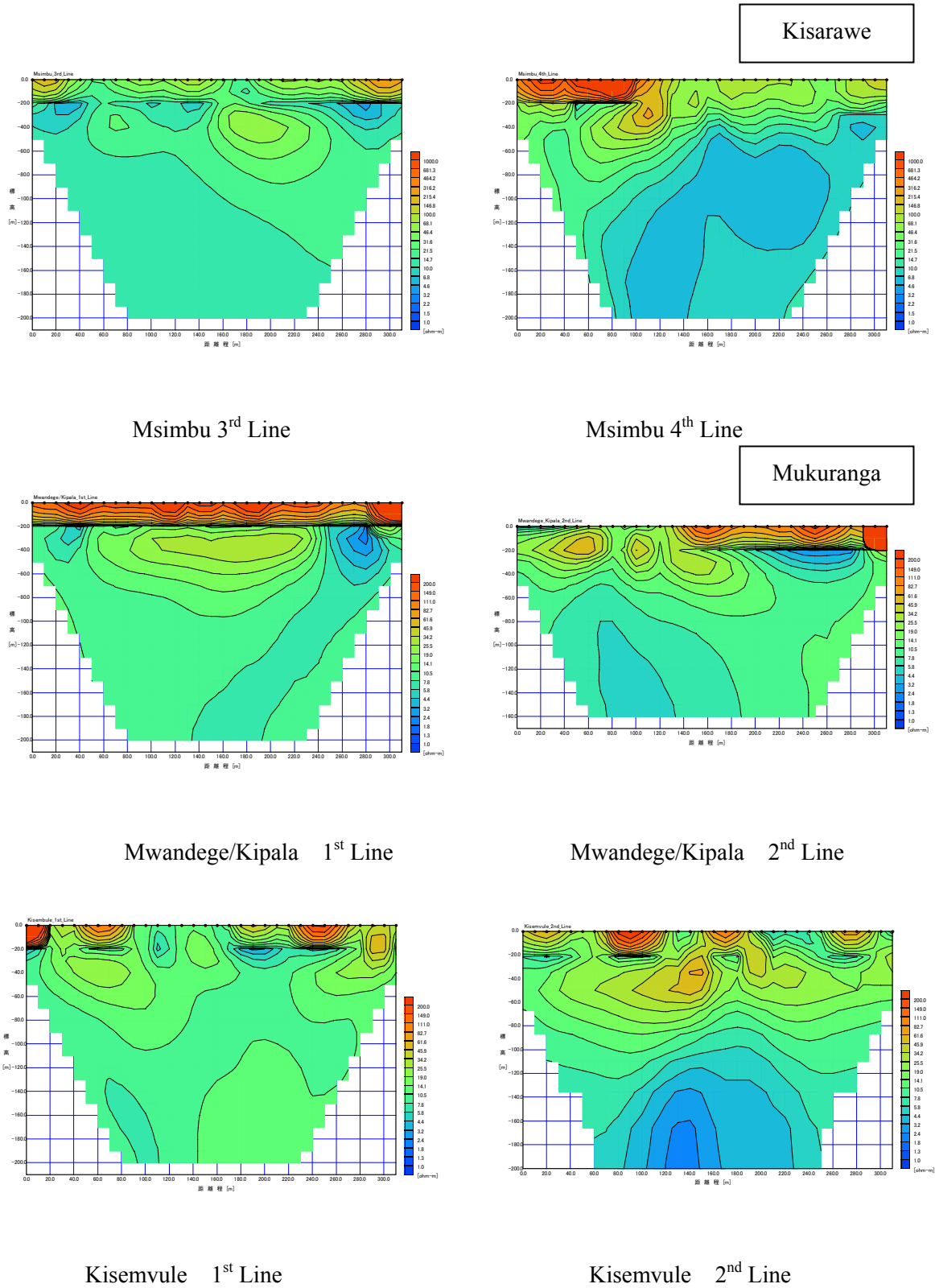
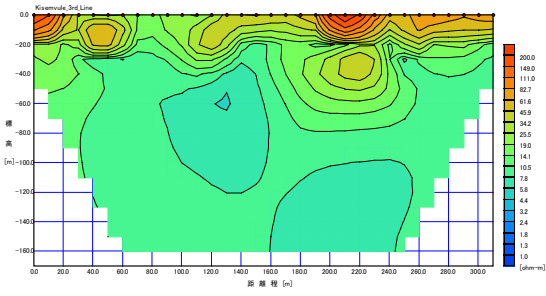
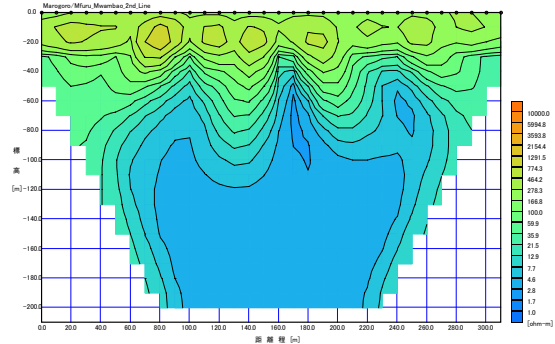
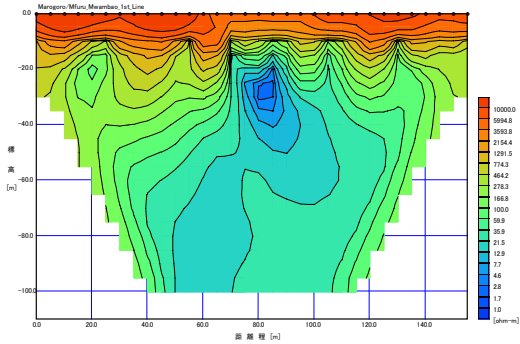


図-2 比抵抗二次元断面図 (6/11)

Mkuranga

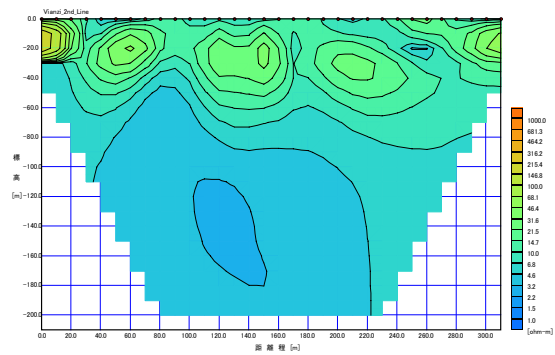
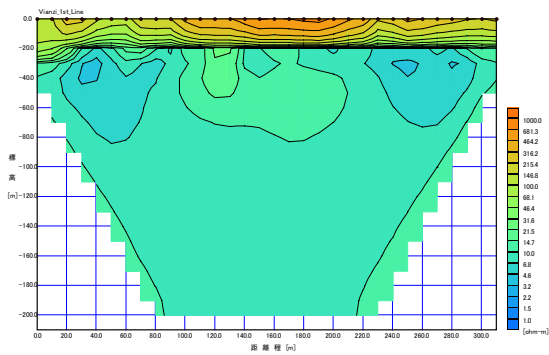


Kisemvule 3rd Line



Marogoro / Mfuru Mwambao 1st Line

Marogoro / Mfuru Mwambao 2nd Line

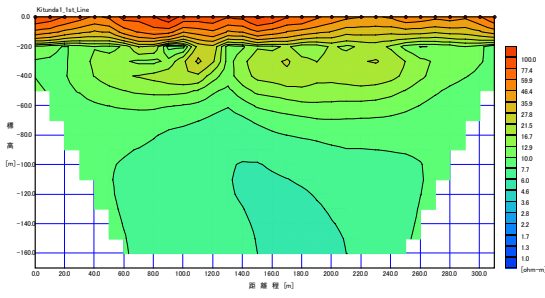


Vianzi 1st Line

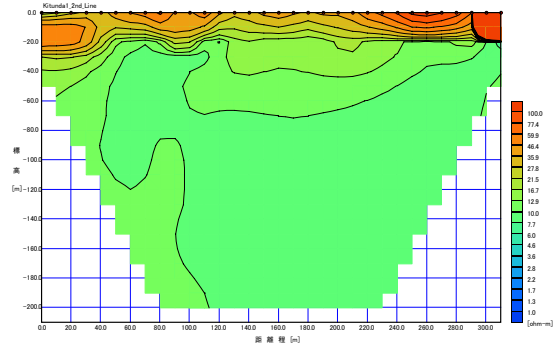
Vianzi 2nd Line

図一2 比抵抗二次元断面図 (7/11)

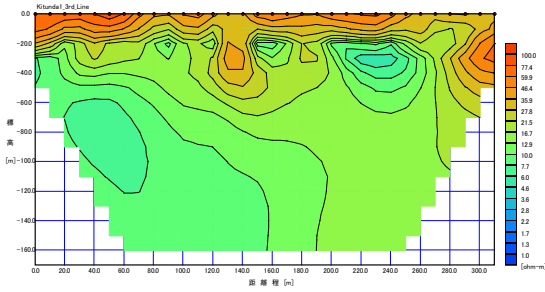
Ilala



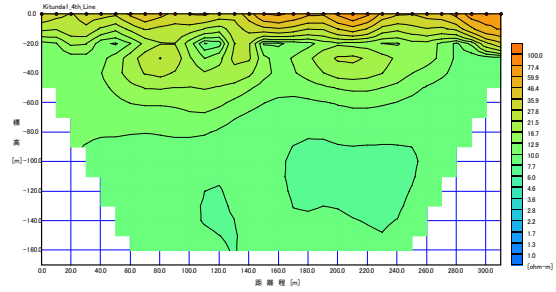
Kitunda –Kivule (1/2) 1st Line



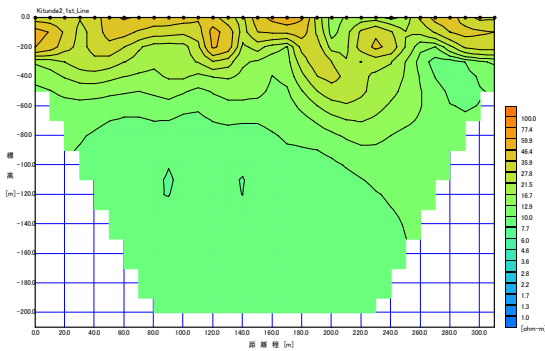
Kitunda –Kivule (1/2) 2nd Line



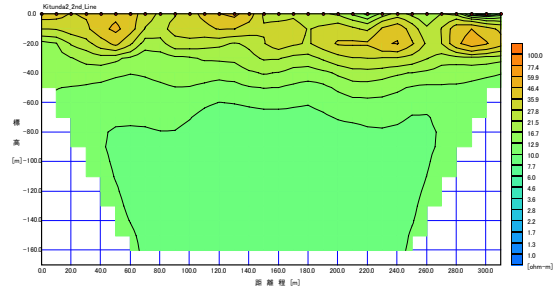
Kitunda –Kivule (1/2) 3rd Line



Kitunda –Kivule (1/2) 4th Line



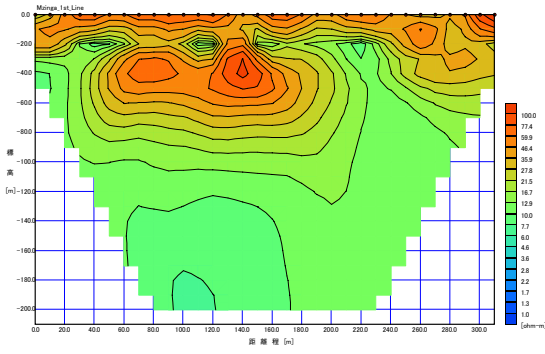
Kitunda –Kivule (2/2) 1st Line



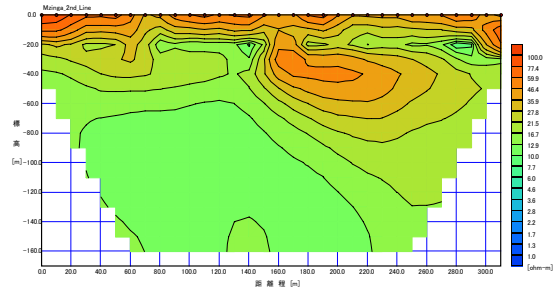
Kitunda –Kivule (2/2) 2nd Line

図-2 比抵抗二次元断面図 (8/11)

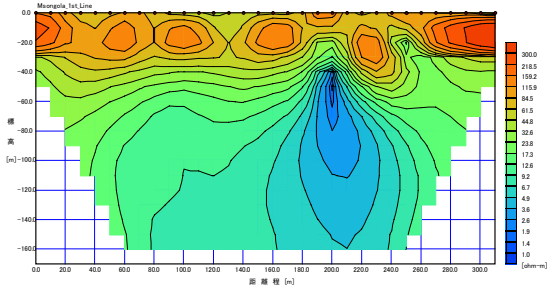
Ilala



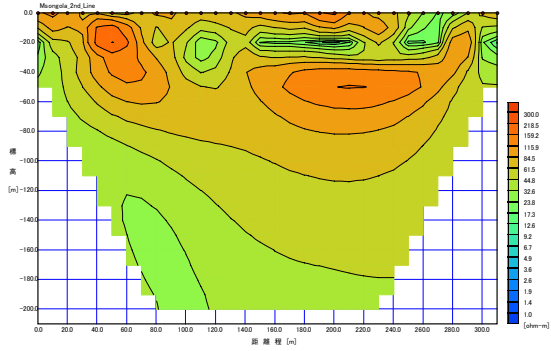
Kitunda-Mzinga 1st Line



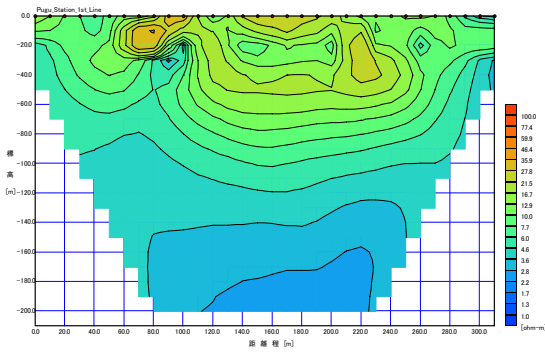
Kitunda-Mzinga 2nd Line



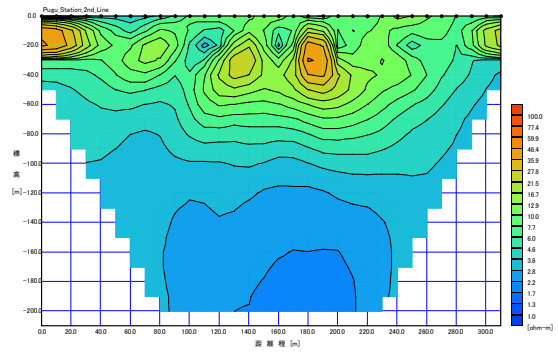
Msongola 1st Line



Msongola 2nd Line



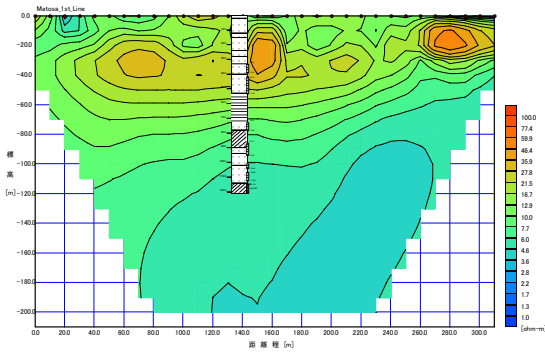
Pugu Station 1st Line



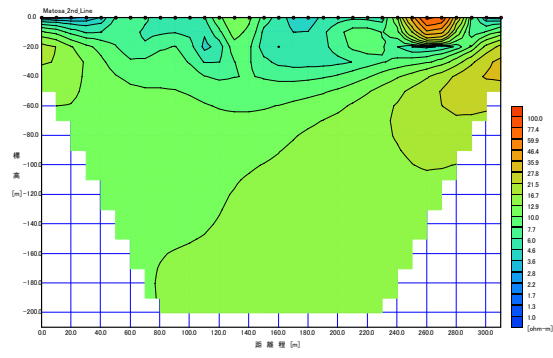
Pugu Station 2nd Line

図-2 比抵抗二次元断面図 (9/11)

Kinondoni

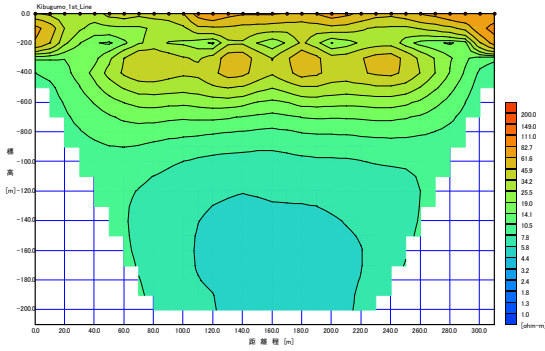


Matosa 1st Line

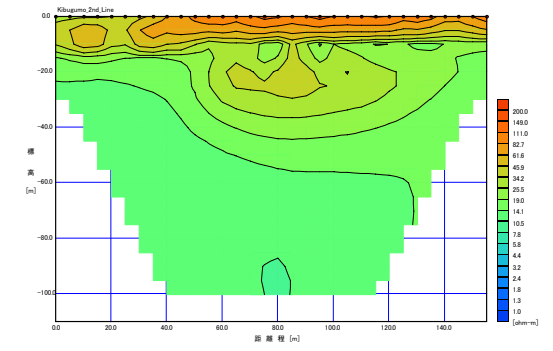


Matosa 2nd Line

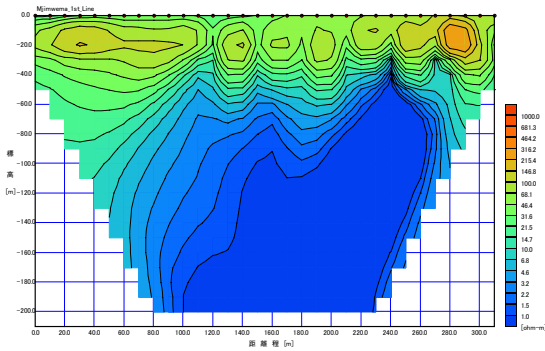
Temeke



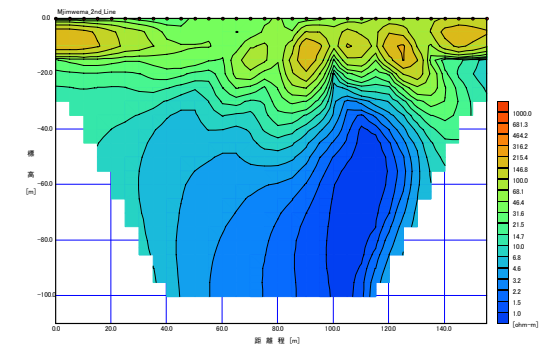
Kibugumo 1st Line



Kibugumo 2nd Line



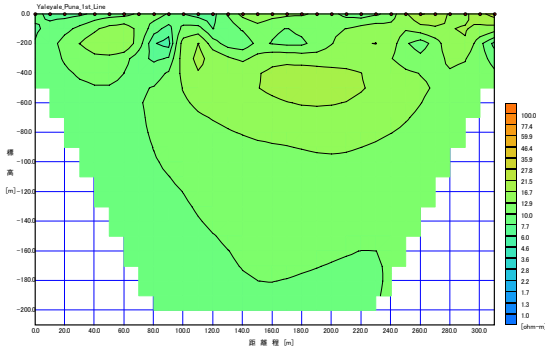
Mjimwema-Salanga 1st Line



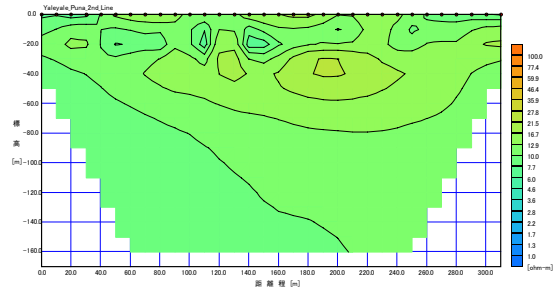
Mjimwema-Salanga 2nd Line

図-2 比抵抗二次元断面図 (10/11)

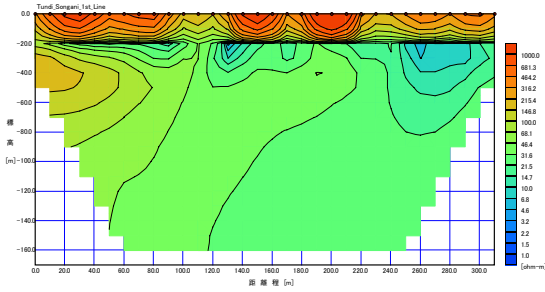
Temeke



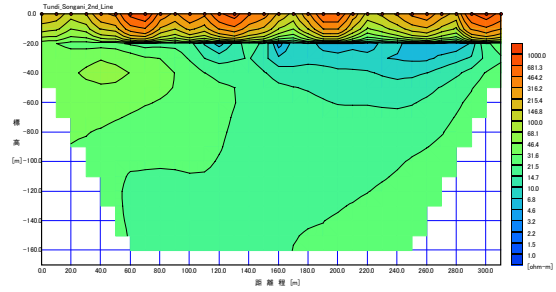
Yaleyale Puna 1st Line



Yaleyale Puna 2nd Line



Tundwi Songani 1st Line



Tundwi Songani 2nd Line

図-2 比抵抗二次元断面図 (11/11)

表-2 試掘予定地点一覧表

District/ Municipality	Village	Latitude			Longitude			Elev. m	Depth m		
		d	m	s	d	m	s				
Bagamoyo	Kibindu No. 1	S	5	59	29.78	E	37	55	41.47	403	100
	No. 2	S	5	59	35.77	E	37	55	34.12	399	100
Mkuranga	Mwandege/Kipala	S	6	58	19.14	E	39	17	25.70	83	80
	Kisemvule No. 1	S	7	2	13.75	E	39	15	53.68	95	80
		No. 2	S	7	2	9.75	E	39	16	4.09	92
	Marogoro/Mfuru Mwambao	S	7	5	18.73	E	39	22	39.76	37	50
Vianzi	S	7	2	43.56	E	39	19	44.89	107	120	
Ilala	Kitunda-Kivule(1/2) No. 1	S	6	55	0.94	E	39	11	0.78	54	80
		No. 2	S	6	54	59.66	E	39	10	53.97	50
	Kitunda-Kivule(2/2)	S	6	56	25.97	E	39	10	38.64	51	80
	Kitunda-Mzinga No. 1	S	6	54	35.8	E	39	11	47.28	51	80
		No. 2	S	6	54	37.07	E	39	11	51.14	51
	Msongola	S	6	57	56.06	E	39	10	29.89	59	80
Pugu Station	S	6	52	48.76	E	39	7	44.84	90	80	
Temeke	Kibugumo	S	6	52	14.38	E	39	22	32.17	11	50
	Mjimwema-Salanga	S	6	51	11.69	E	39	20	38.65	19	50
	Yaleyale Puna	S	7	2	50.67	E	39	31	41.4	28	80
	Tundwi Songani No. 1	S	7	6	11.9	E	39	25	43.17	28	80
No. 2		S	7	6	8.51	E	39	25	39.51	26	80

(2) 試掘揚水試験データ

試掘揚水試験結果

1. 試掘地点

地本調査では、表-1 に示す 5 地点において試掘試験を実施した。

表-1 試掘地点一覧表

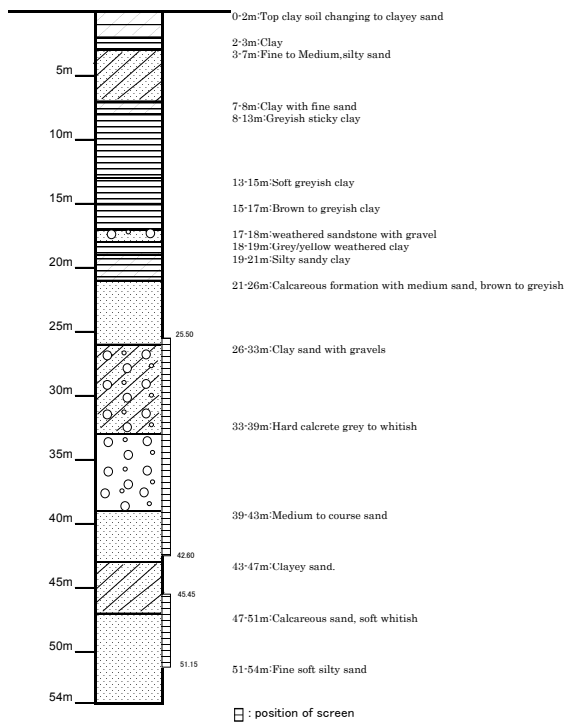
District/ Municipality	Village	Latitude			Longitude			Elevation (m)	Target Aquifer	Derilled Depth (m)		
		d	m	s	d	m	s					
Kibaha	Minazi Mikinda(1/2) 1st	S	6	48	46.24	E	38	39	15.23	40	Neogene	50
	Minazi Mikinda(1/2) 2nd	S	6	48	37.86	E	38	39	24.06	37		
	Minazi Mikinda(2/2) Kitomondo 1st	S	6	50	47.56	E	38	38	5.89	40	Neogene	50
	Minazi Mikinda(2/2) Kitomondo 2nd	S	6	51	30.17	E	38	37	31.85	41		
Kisarawe	Chole	S	7	20	57.7	E	38	39	36.32	356	Cretaceous	80
	Msimbu 1st	S	7	6	30.74	E	39	1	29.47	147	Cretaceous	120
	Msimbu 2nd	S	7	6	30.84	E	39	1	29.88	147		
Kinondoni	Matosa	S	6	44	39.29	E	39	7	48.93	125	Neogene	120

2. 試掘結果

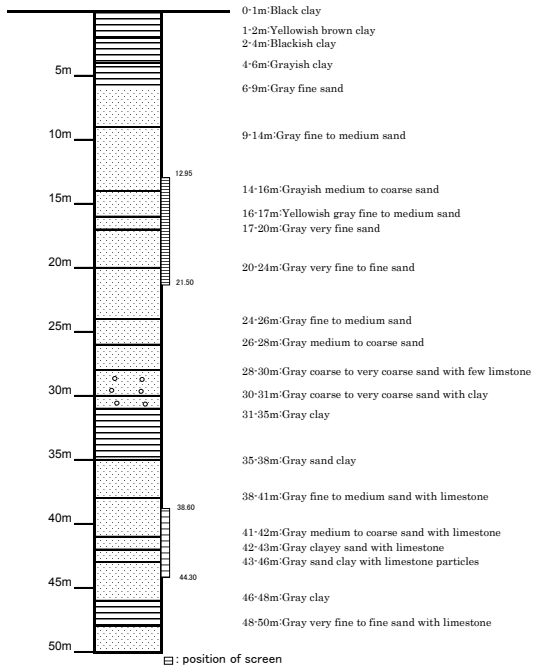
試掘によって得られた地質柱状図を図-2 に示す。

資料 9. その他の資料・情報

Minazi Mikinda (1/2)
(1st) drilled depth=54m

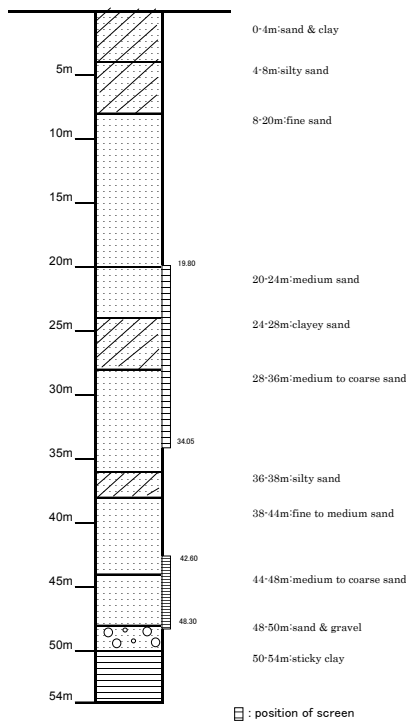


Minazi Mikinda (1/2)
(2nd) drilled depth=50m

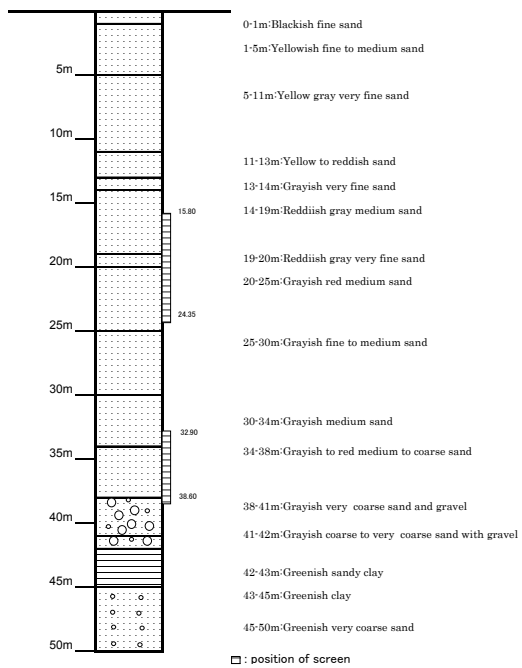


Minazi Mikinda(1/2) 1st & 2nd Test BH

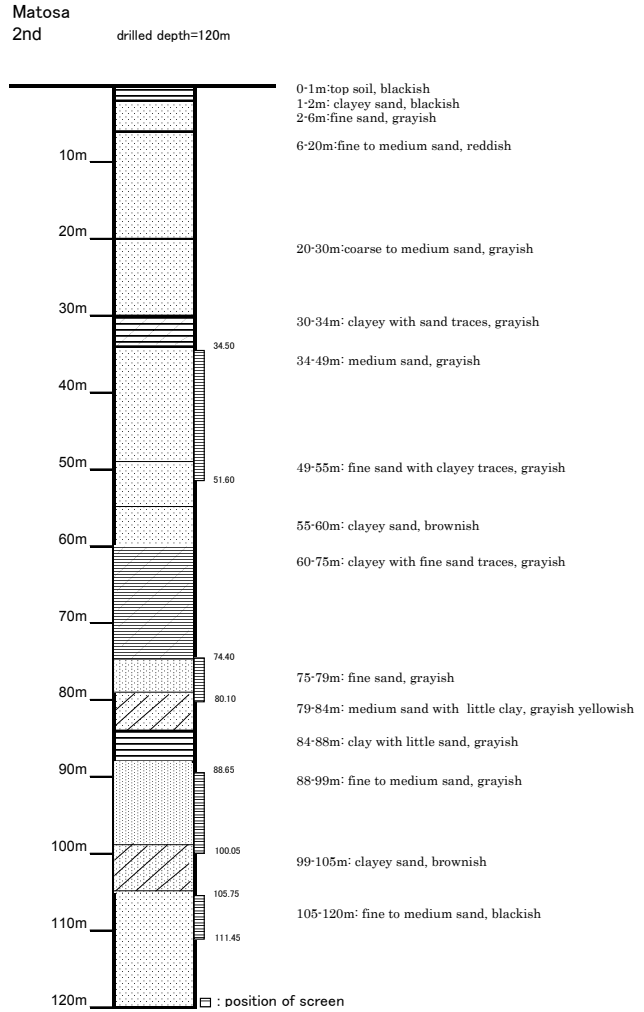
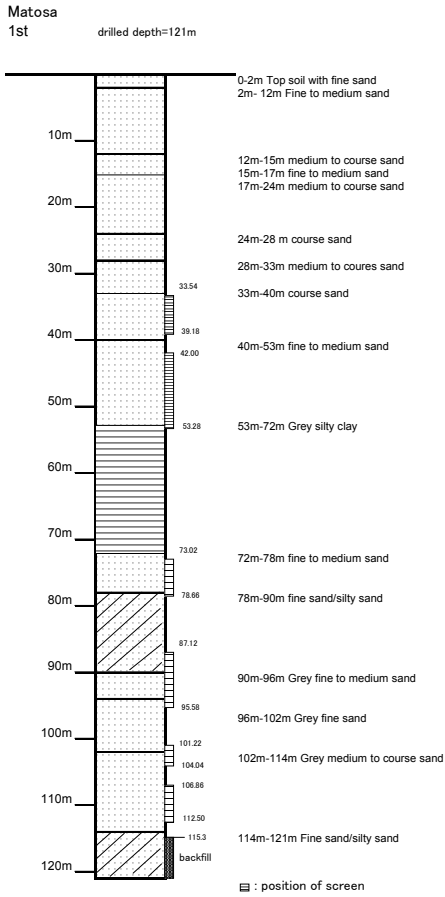
Minazi Mikinda (2/2)/Kitomondo
(1st) drilled depth=54m



Minazi Mikinda (2/2)/Kitomondo
(2nd) drilled depth=50m



Minazi Mikinda(2/2)/Kitomondo 1st & 2nd Test BH

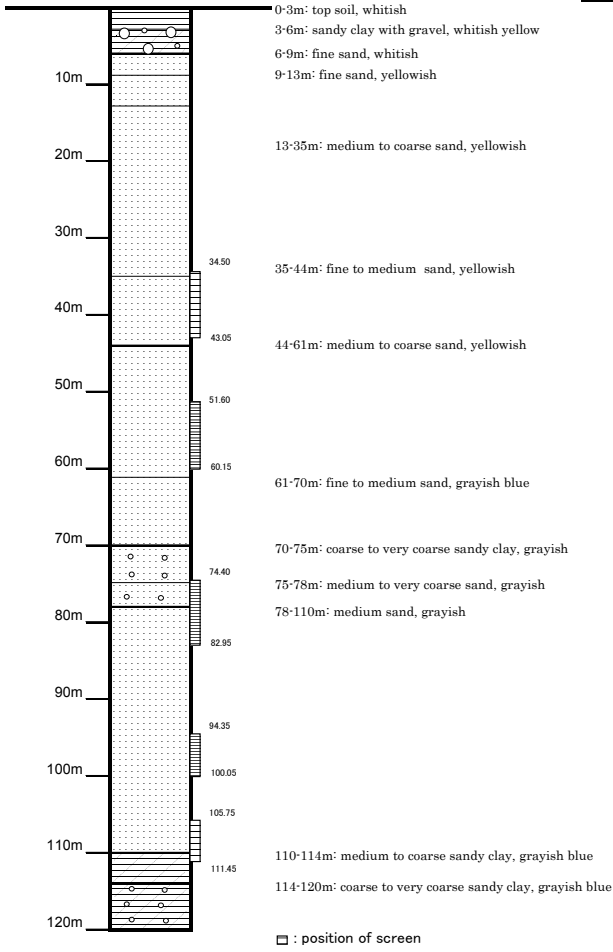


Matosa 1st & 2nd Test BH

資料 9. その他の資料・情報

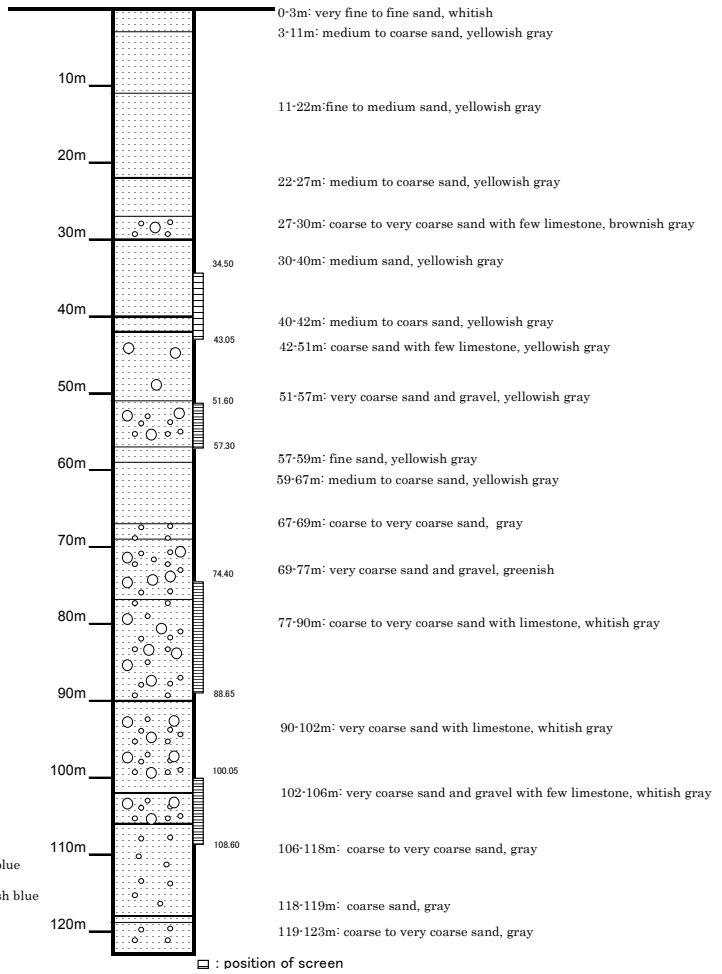
Msimbu
1st

drilled depth=120m

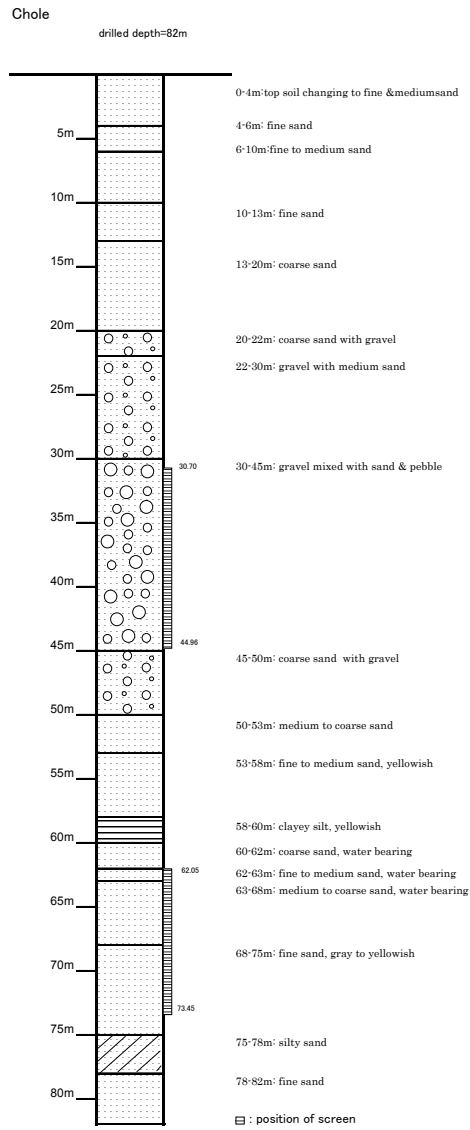


Msimbu
2nd

drilled depth=123m



Msimbu 1st & 2nd Test BH



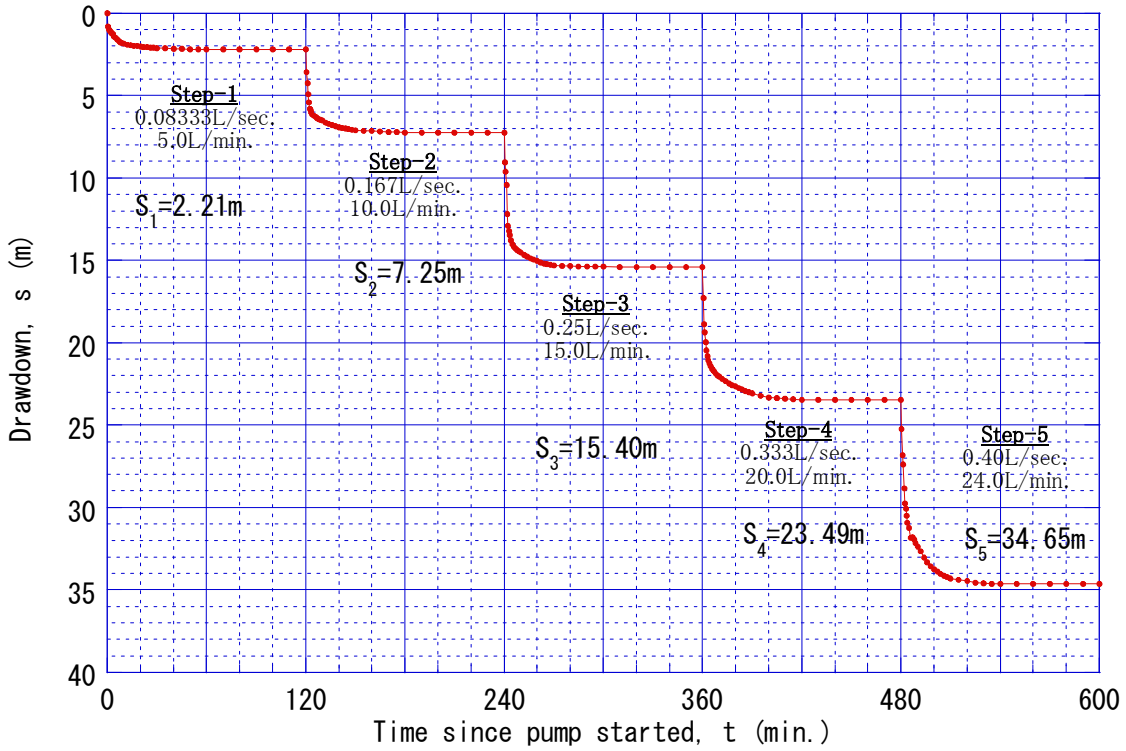
Chole Test BH

資料 9. その他の資料・情報

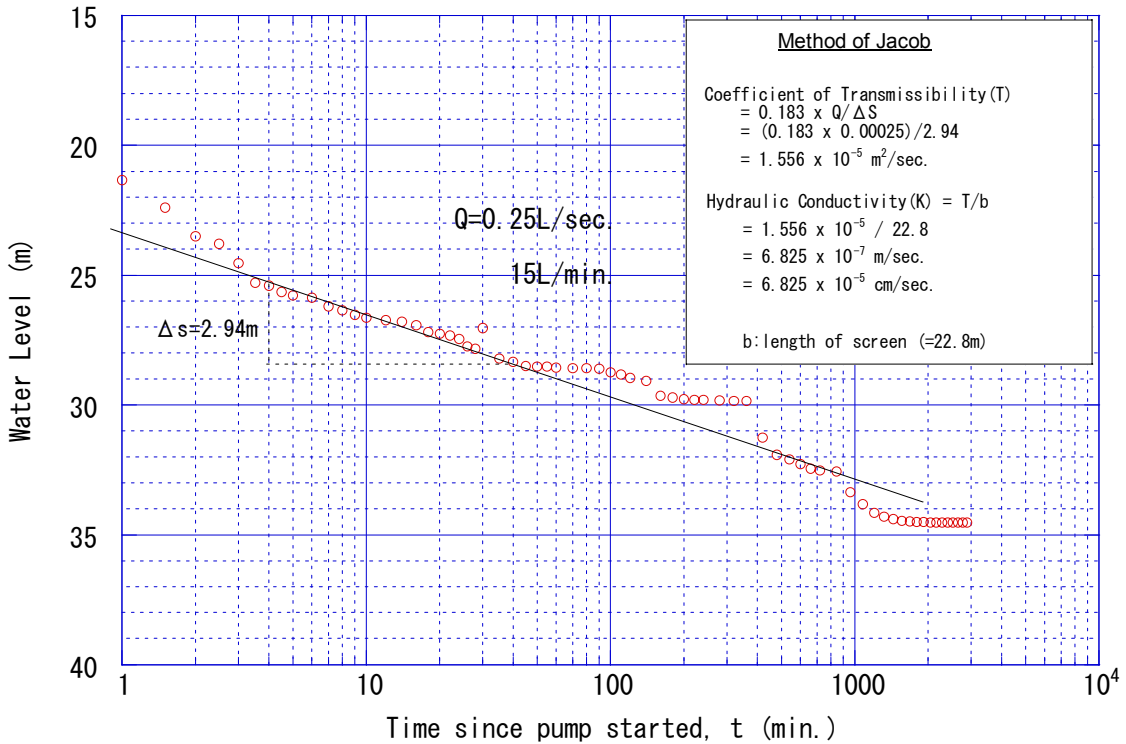
3. 揚水試験結果

掘削した井戸は仕上げを行い、段階揚水試験、連続揚水試験、回復試験の各揚水試験を実施した。試験結果を示す、水位曲線を図-1 に示す。

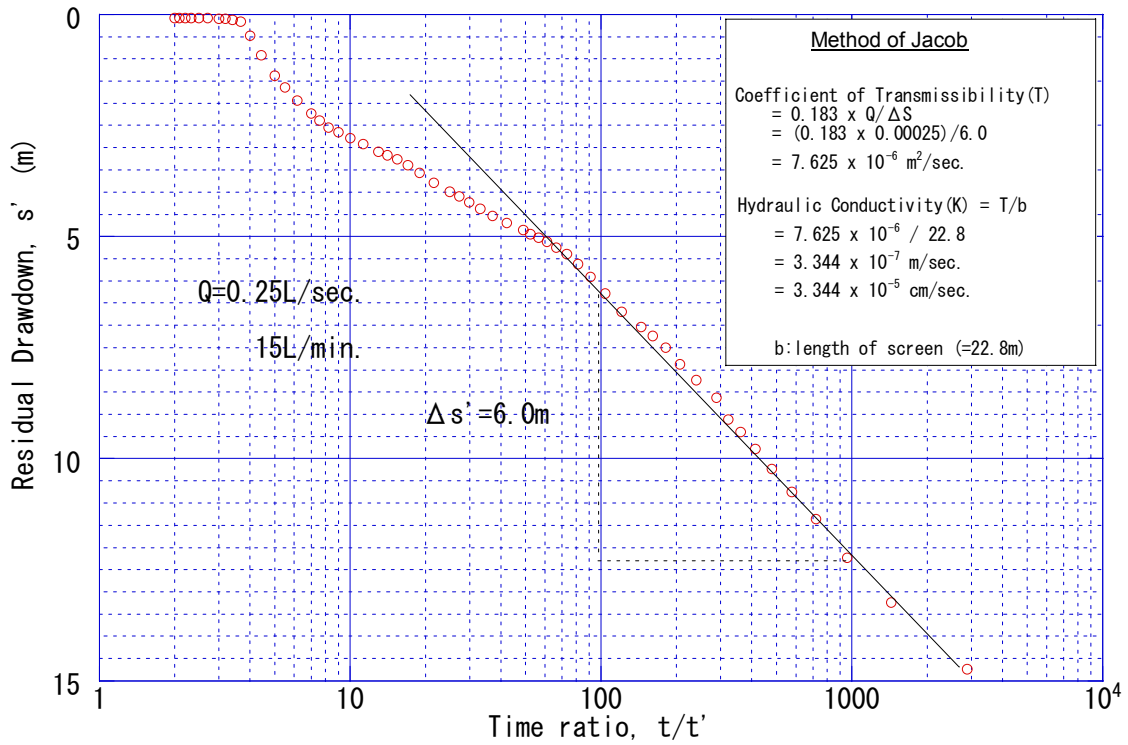
連続揚水試験の終了時には水質試料の採取を行った。水質分析の結果は、本報告書の第 3 章表 3.6 に示す。



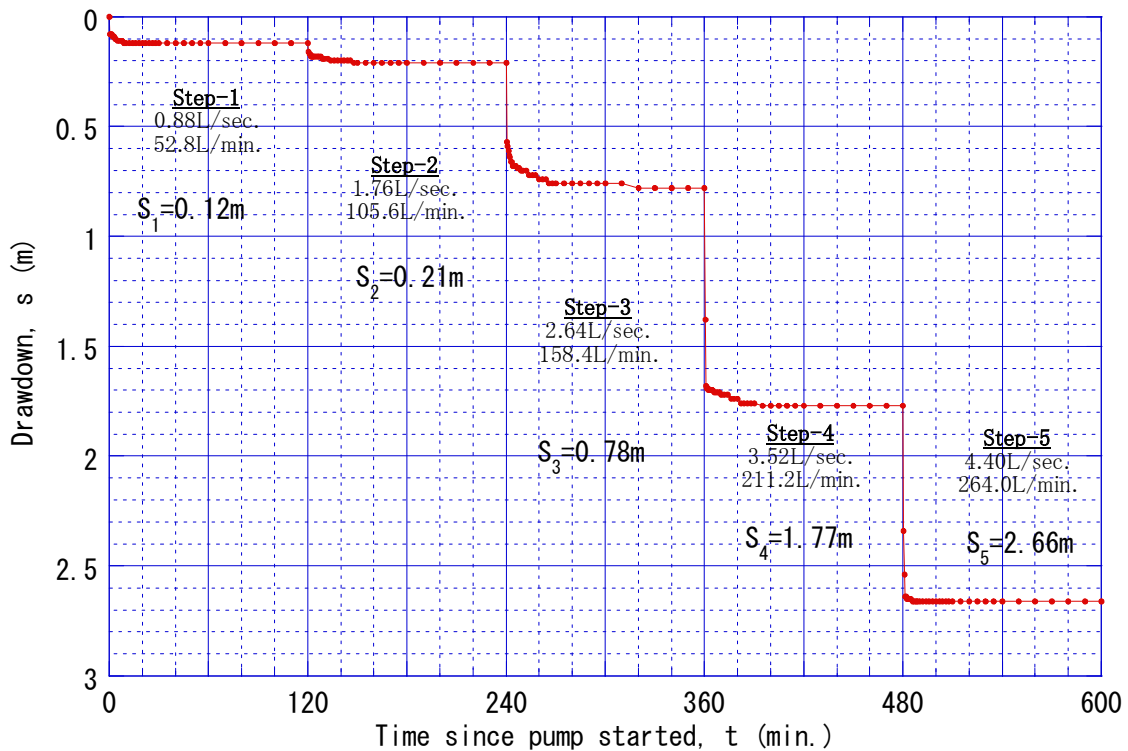
Step-Drawdown Test MinaziMikinda(1/2) 1st BH



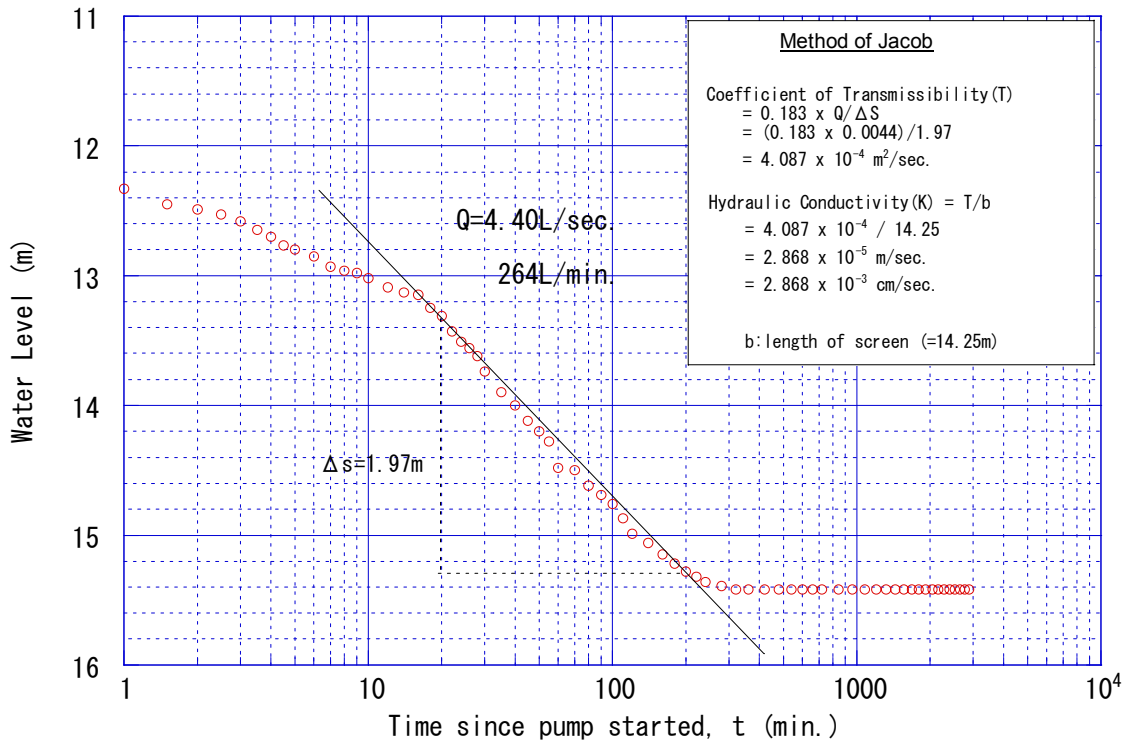
Constant-Discharge Test MinaziMikinda(1/2) 1st BH



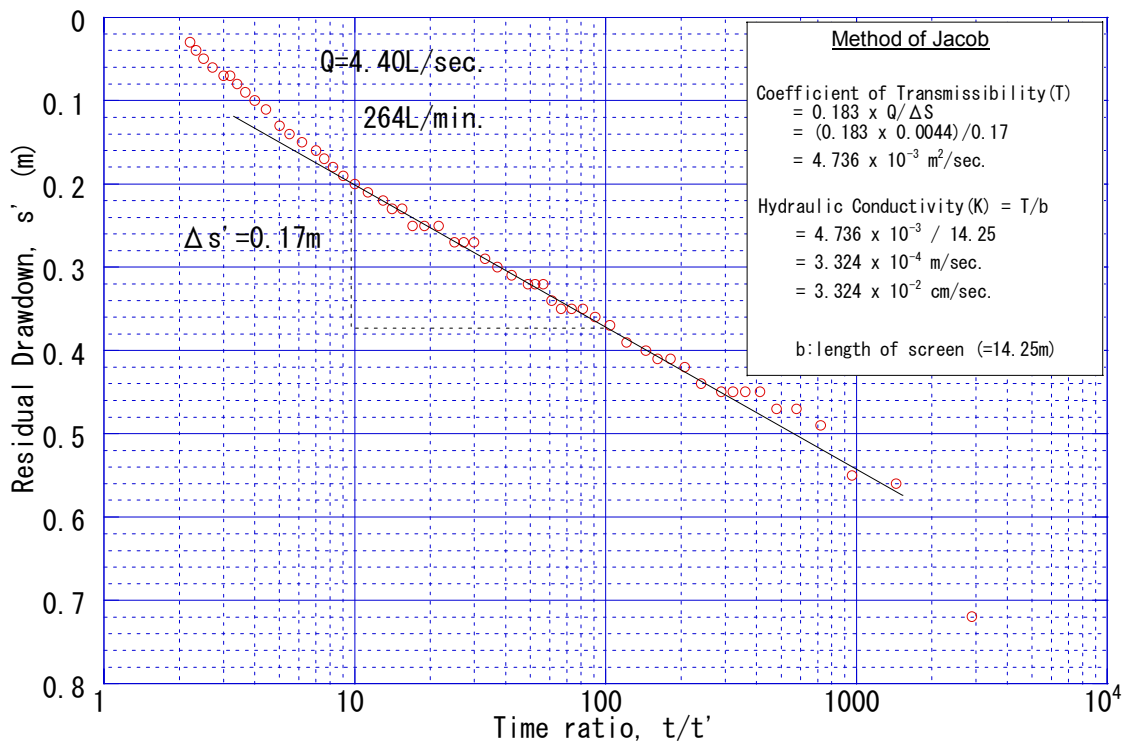
Recovery of Constant-Discharge Test
 Minazi Mikinda(1/2) 1st BH



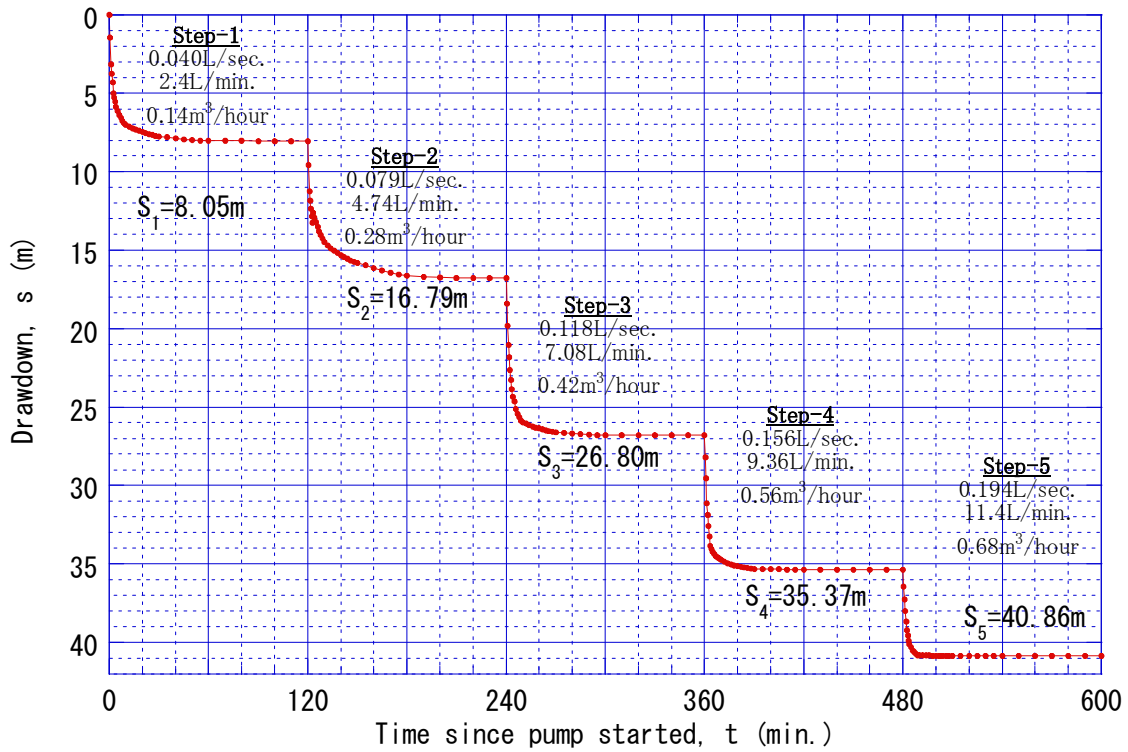
Step-Drawdown Test Minazi Mikinda(1/2) 2nd BH



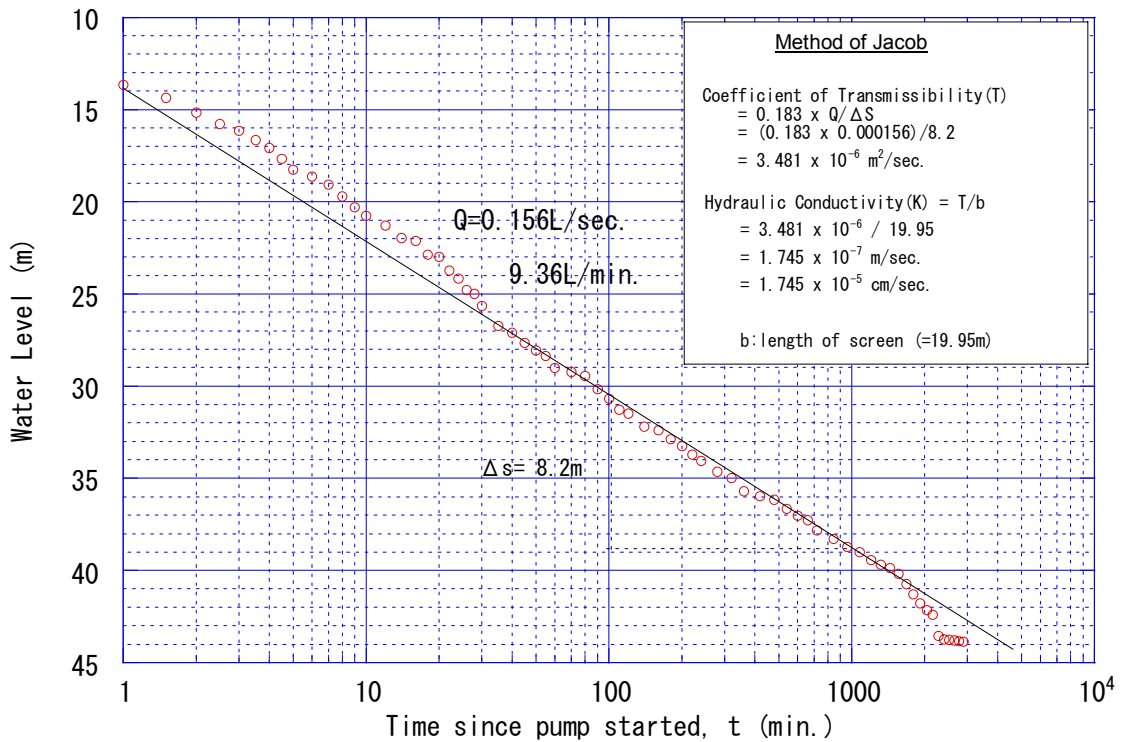
Constant-Discharge Test Minazi Mikinda (1/2) 2nd BH



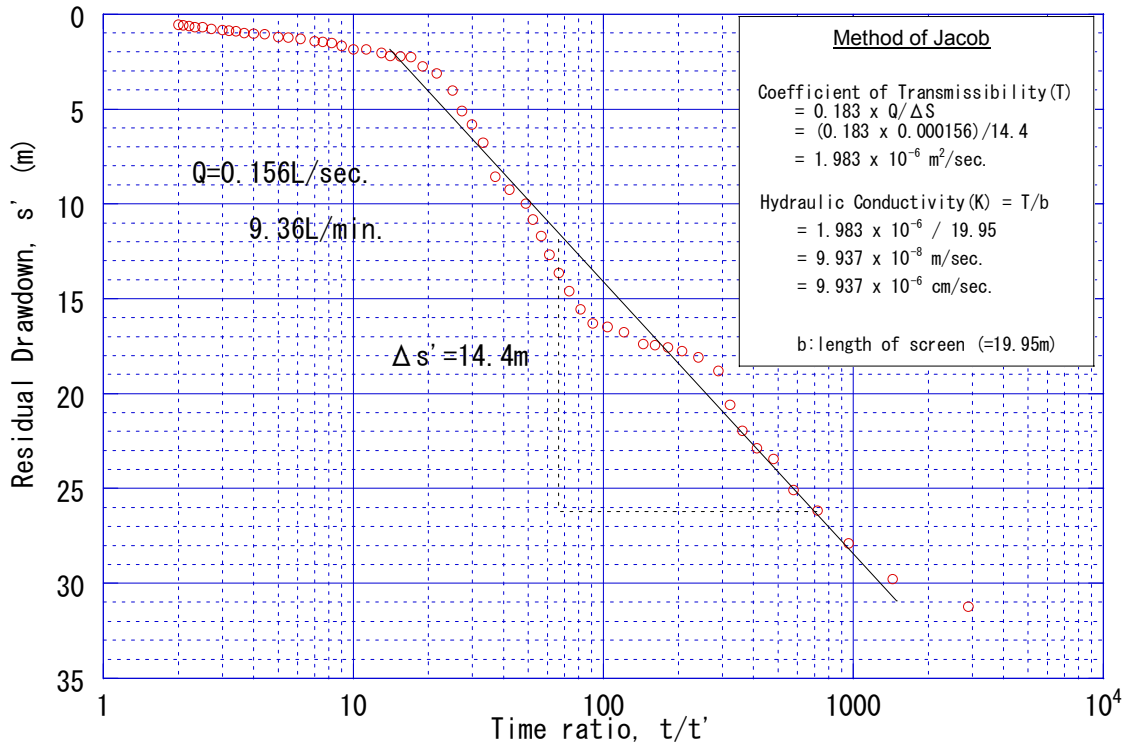
Recovery of Constant-Discharge Test
 Minazi Mikinda (1/2) 2nd BH



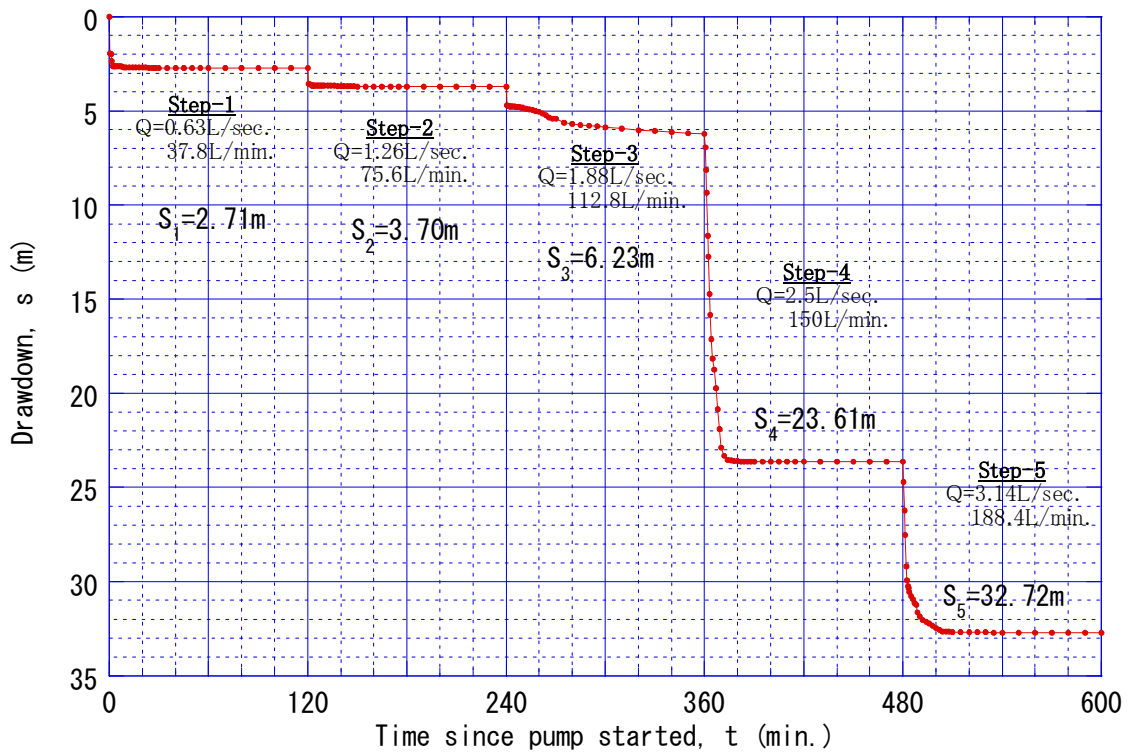
Step-Drawdown Test MinaziMikinda(2/2)/Kitomondo 1st BH



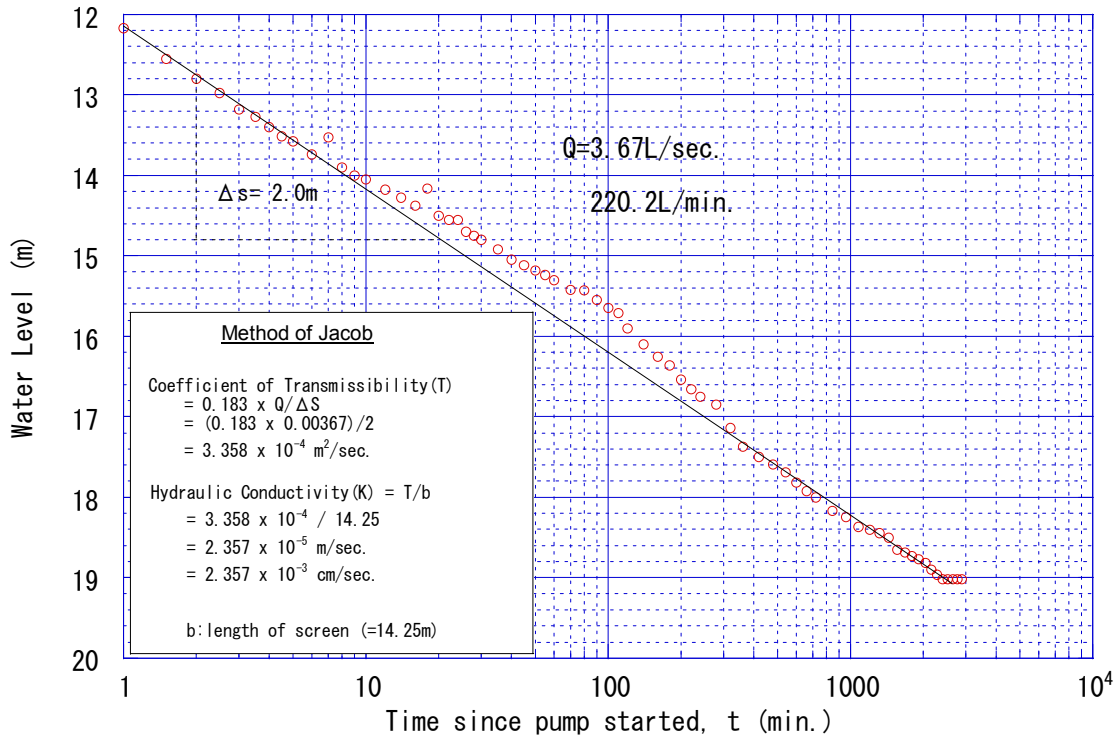
Constant-Discharge Test MinaziMikinda(2/2)/Kitomondo 1st BH



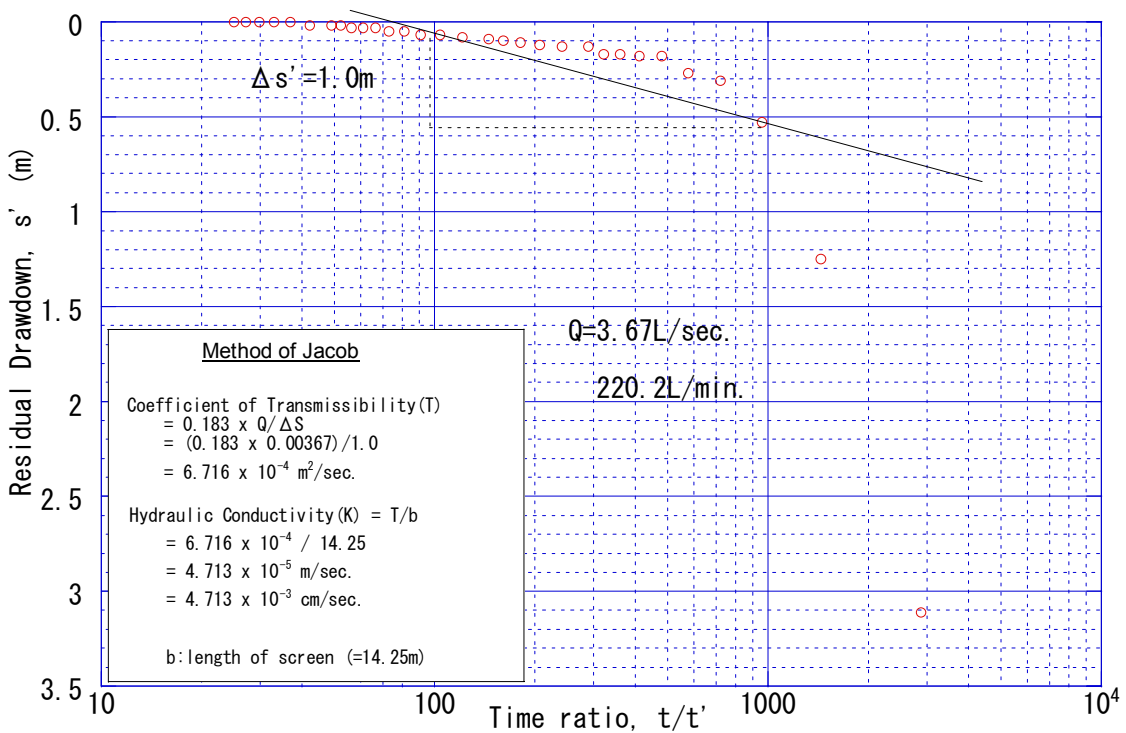
Recovery of Constant-Discharge Test
 Minazi Mikinda (2/2) / Kitomond 1st BH



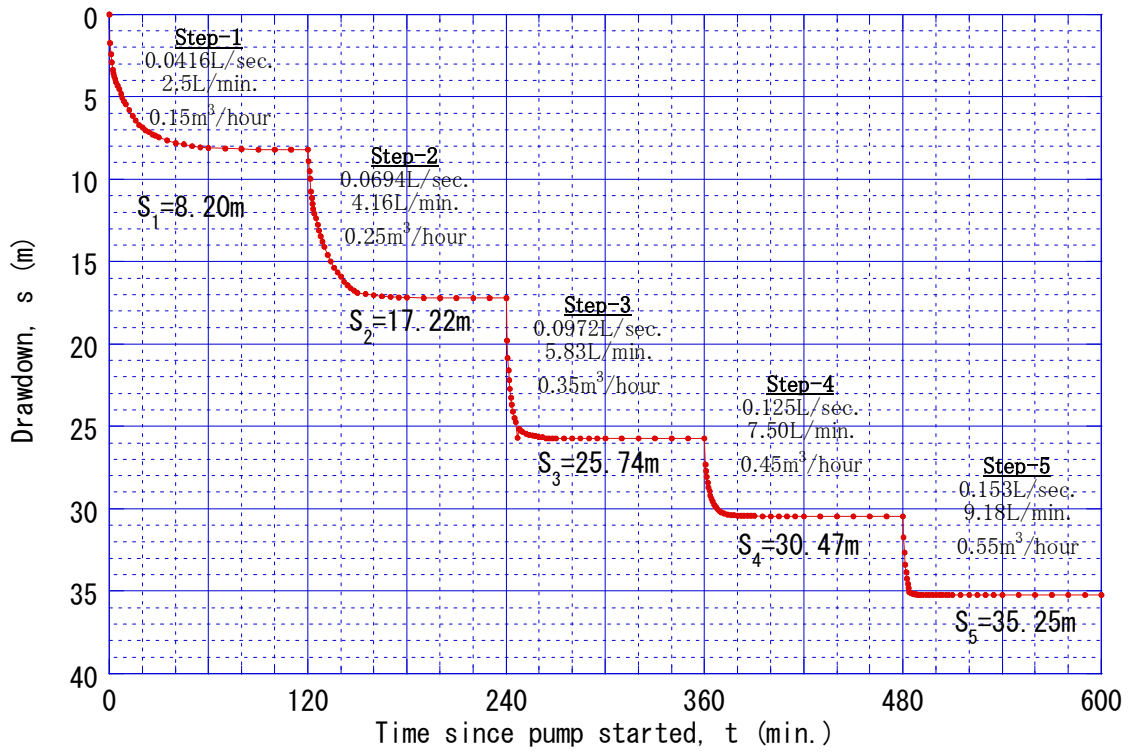
Step-Drawdown Test Minazi Mikinda (2/2) / Kitomondo 2nd BH



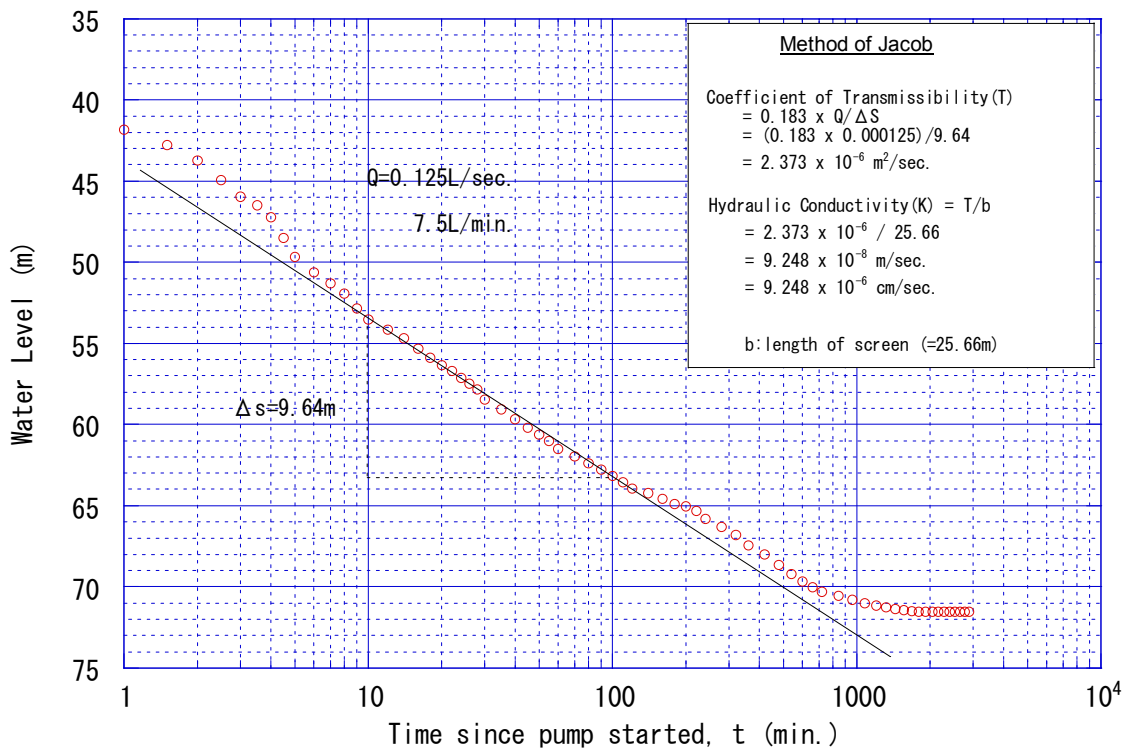
Constant-Discharge Test Minazi Mikinda (2/2) / Kitomondo 2nd BH



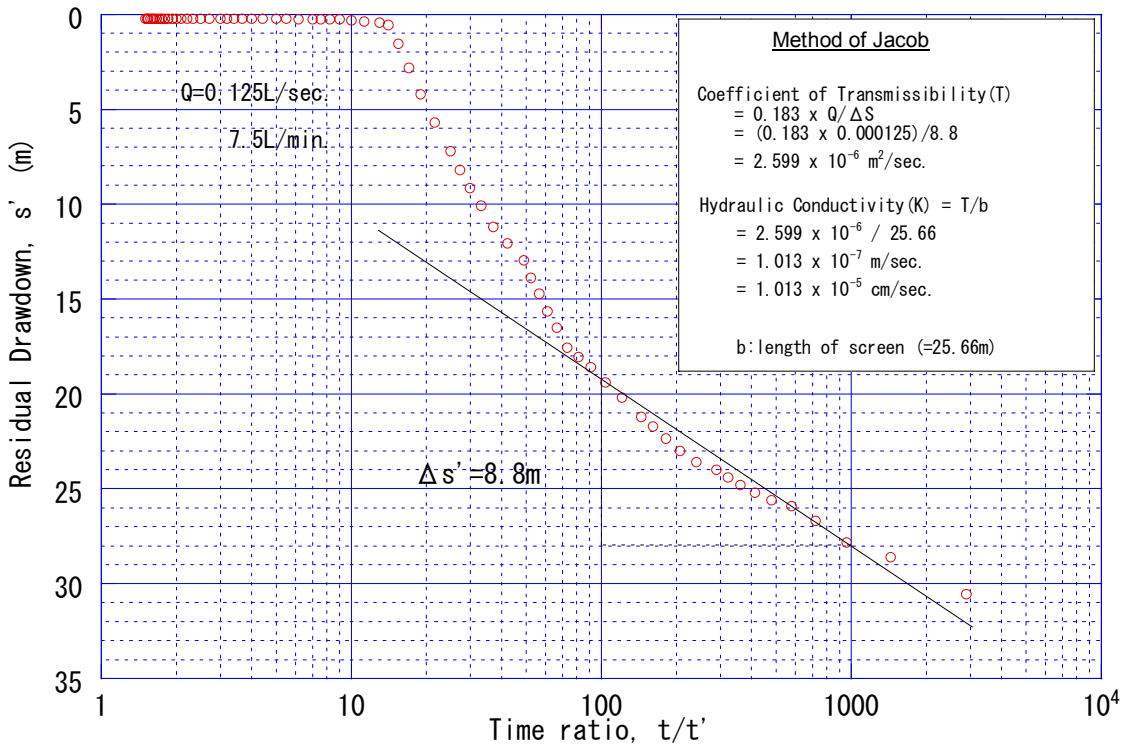
Recovery of Constant-Discharge Test
 Minazi Mikinda (2/2) / Kitomond 2nd BH



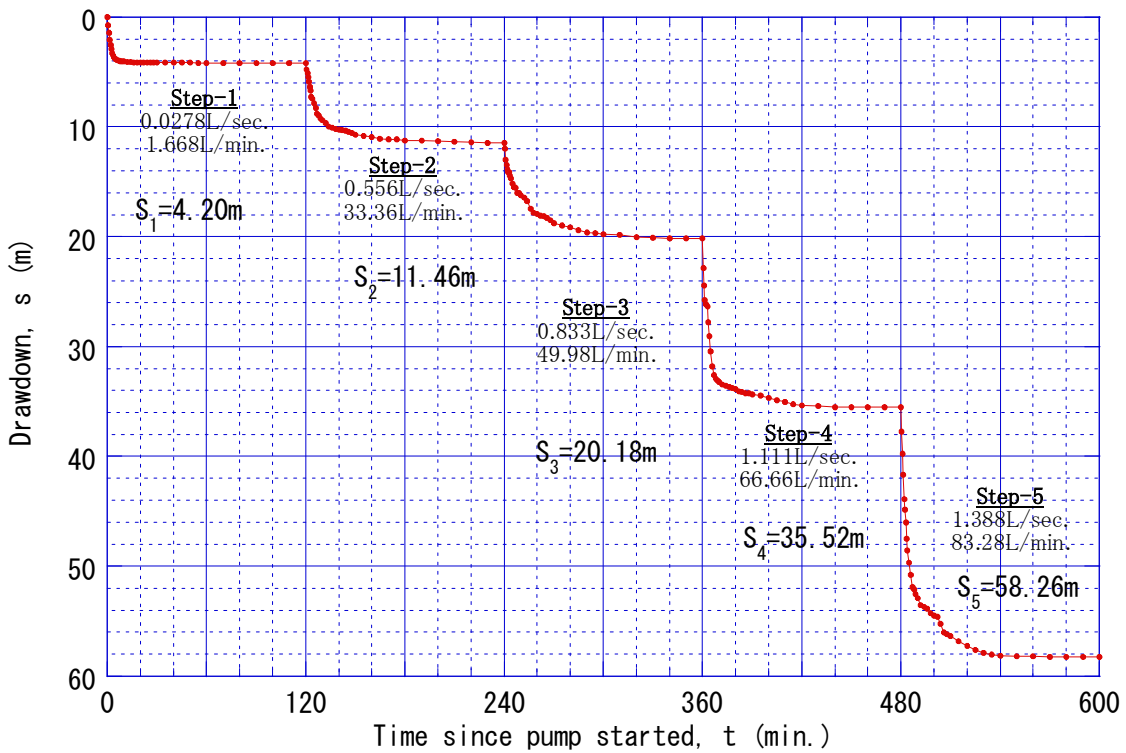
Step-Drawdown Test Chole



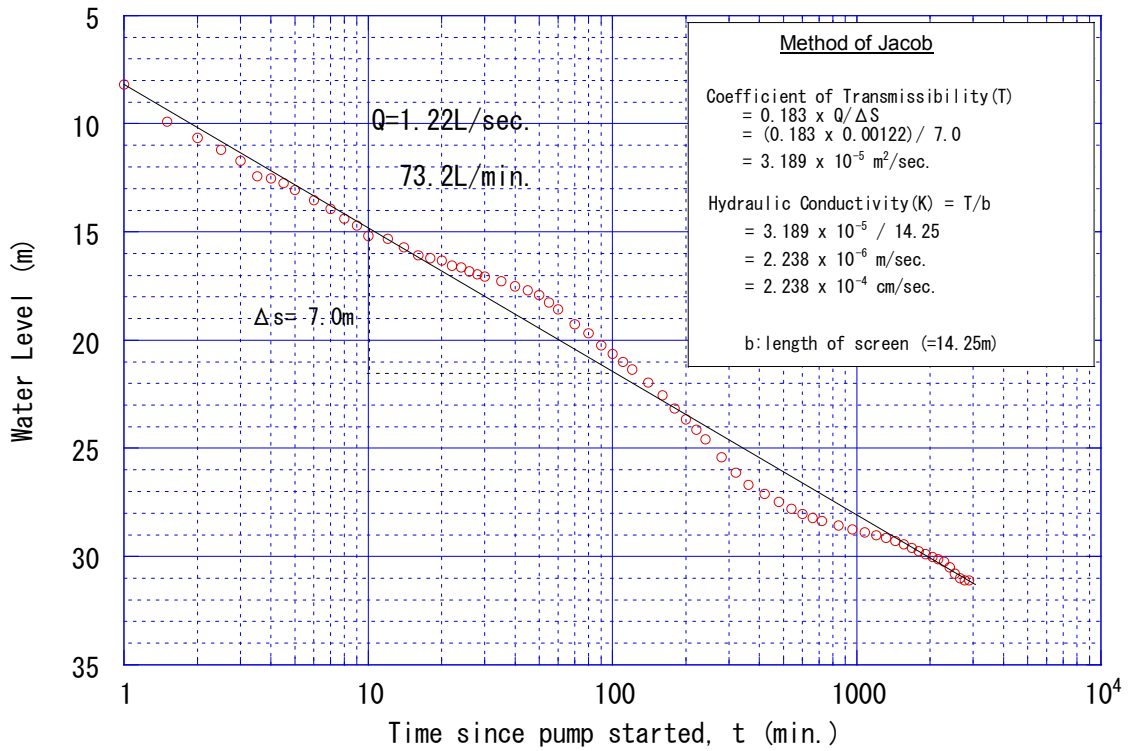
Constant-Discharge Test Chole



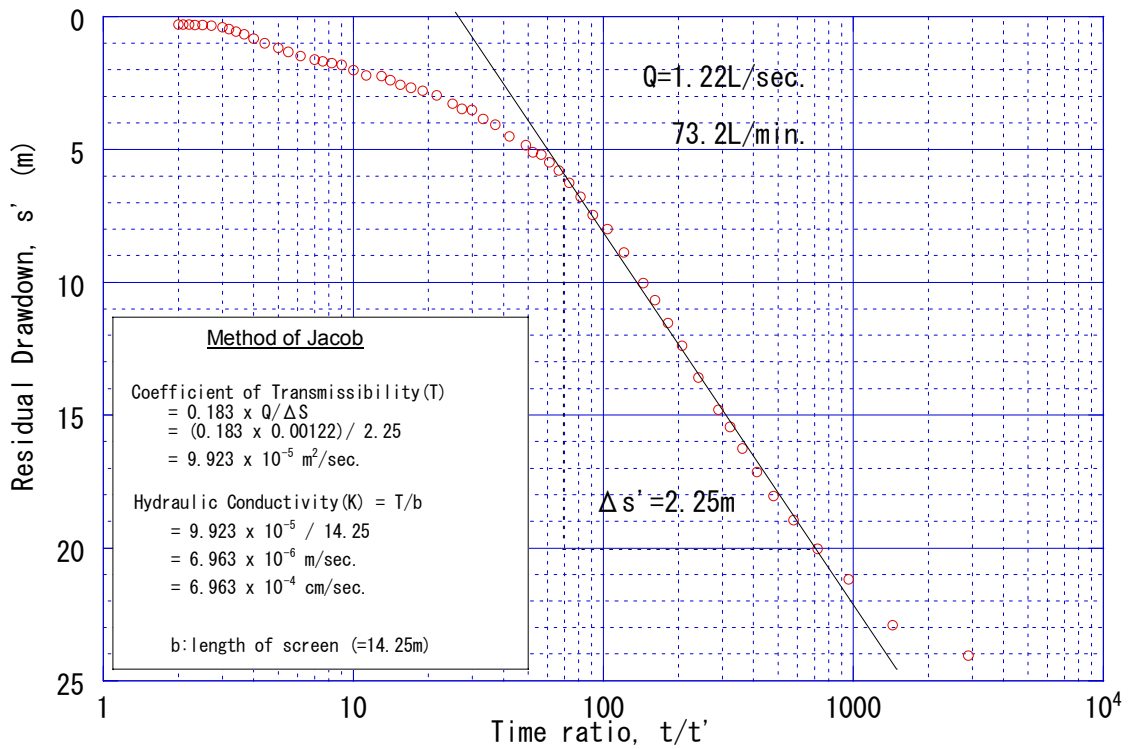
Recovery of Constant-Discharge Test Chole



Step-Drawdown Test Msimbu



Constant-Discharge Test Msimbu



Recovery of Constant-Discharge Test Msimbu