

LIST OF ELEMENTS OF HORIZONTAL ALIGNMENT

INTERSECTION POINT	X-COORDINATE (m)	Y-COORDINATE (m)	GRID AZIMUTH (Degrees)	ANGLE OF INTERSECTION (Degrees)	RADIUS OF CURVATURE (m)
BP	315,383.4700	62,356.3350			
IP-1	315,789.2855	62,546.7761	430.257	3-59-58.2(L)	2000.000
EP	315,857.0508	62,582.5568	69.799		

COORDINATES OF STATIONS

No.	STATIONS	X-COORDINATE (m)	Y-COORDINATE (m)	REMARKS
1	207+100.000	315,383.47000	62,356.33500	START POINT OF PROJECT
2	207+200.000	315,473.14100	62,400.59700	
3	207+213.250	315,485.02100	62,406.46400	ABUTMENT A1
4	207+300.000	315,562.81200	62,444.85900	BRIDGE
5	207+400.000	315,652.48270	62,489.12140	
6	207+451.050	315,696.26200	62,511.71200	ABUTMENT A2
7	207+500.000	315,742.32400	62,533.03200	
8	207+600.000	315,833.87600	62,573.23200	
9	207+625.000	315,857.05080	62,582.55680	END POINT OF PROJECT

COORDINATES AND ELEVATION OF BENCH MARKS

SYMBOL	X-COORDINATE (m)	Y-COORDINATE (m)	ELEVATION (Z) (m)
PP6	315,706.124	62,562.812	217.527
PP7	315,688.592	62,506.942	215.437
PP9	315,459.202	62,381.210	218.212
PP10	315,394.475	62,358.819	217.968
C1	315,703.777	62,484.500	216.338
C2	315,485.809	62,368.563	217.317

DIRECTEUR NATIONAL ADJOINT DES ROUTES
REPUBLIQUE DU MALI

BASIC DESIGN STUDY
ON THE PROJECT FOR BRIDGE
CONSTRUCTION OF
DAKAR-BAMAKO SOUTH CORRIDOR

JAPAN INTERNATIONAL COOPERATION AGENCY
KATAHIRA & ENGINEERS INTERNATIONAL

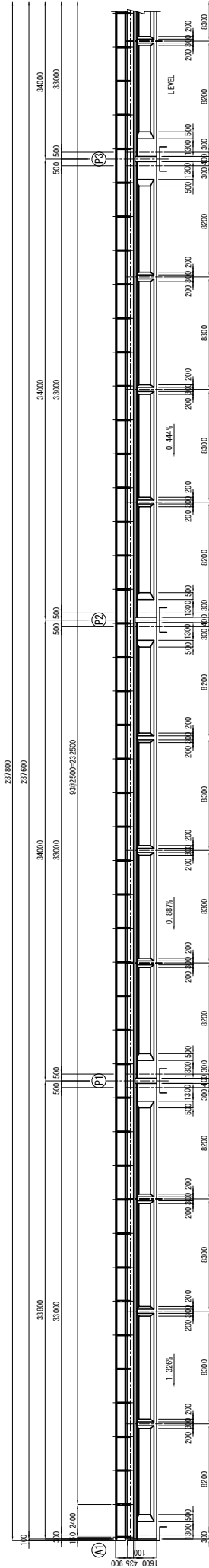
TITLE : BAFING BRIDGE
COORDINATES OF DESIGN ELEMENTS

SCALE
S=1:1000

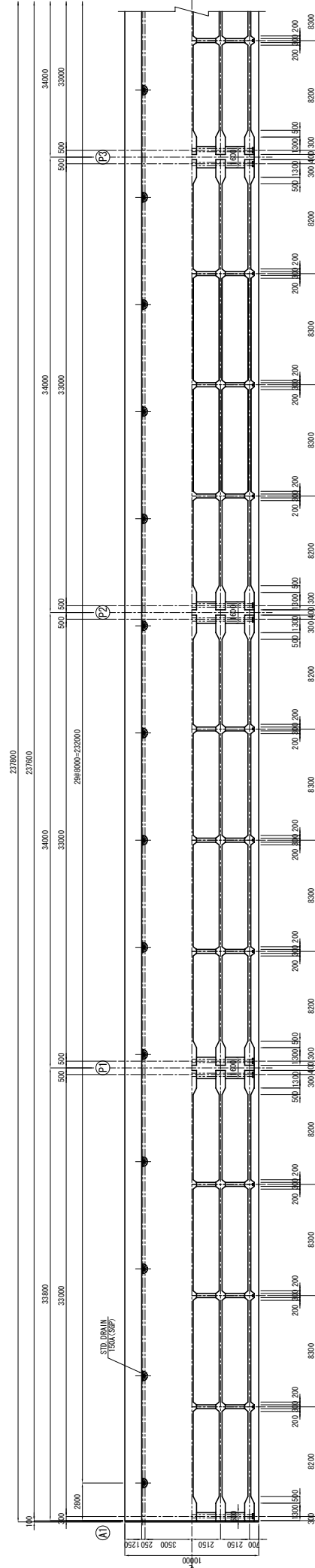
Drawing No.
BAF-1

STRUCTURE DRAWING OF SUPERSTRUCTURE

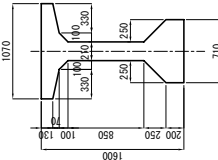
ELEVATION SCALE 1:150



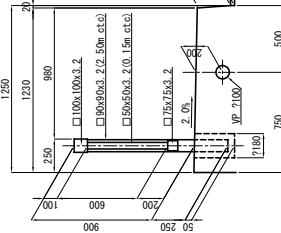
PLAN SCALE 1:150



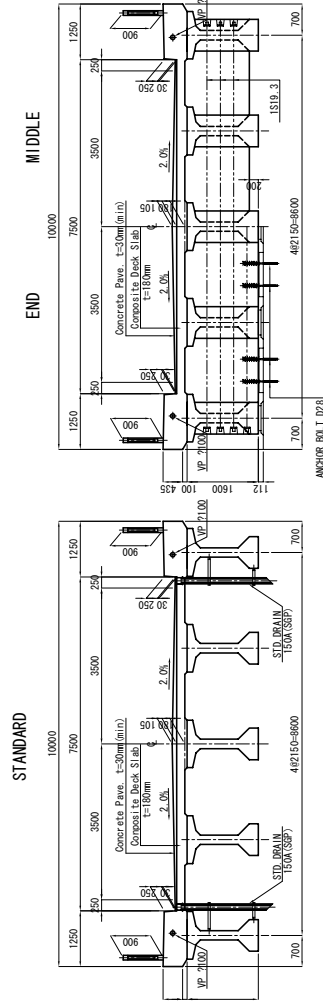
DETAILS SCALE 1:30



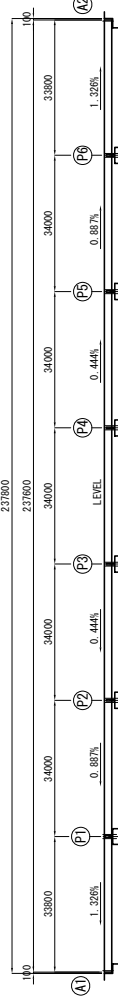
DETAILS SCALE 1:20



BRIDGE CROSS SECTION SCALE 1:60



KEY PLAN



DIRECTEUR NATIONAL ADJOINT DES ROUTES
REPUBLIQUE DU MALI

BASIC DESIGN STUDY
ON THE PROJECT FOR BRIDGE
CONSTRUCTION OF
DAKAR-BAMAKO SOUTH CORRIDOR

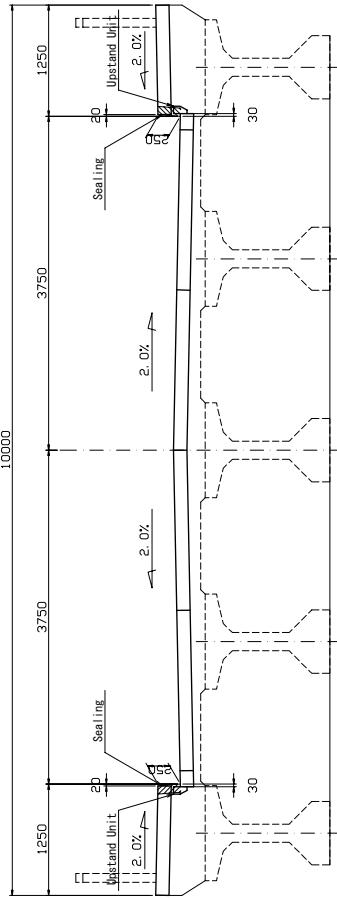
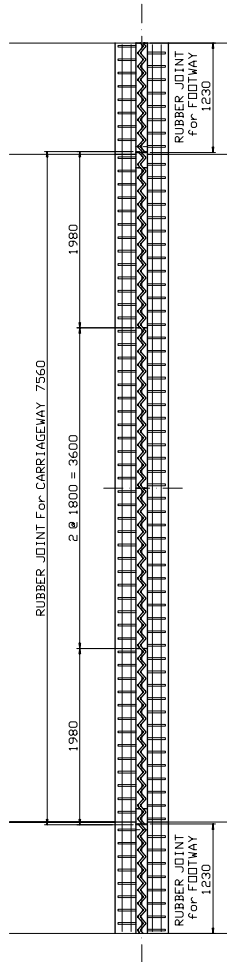
JAPAN INTERNATIONAL COOPERATION AGENCY
KATAHIRA & ENGINEERS INTERNATIONAL

TITLE : BAFING BRIDGE
STRUCTURE DRAWING OF SUPERSTRUCTURE

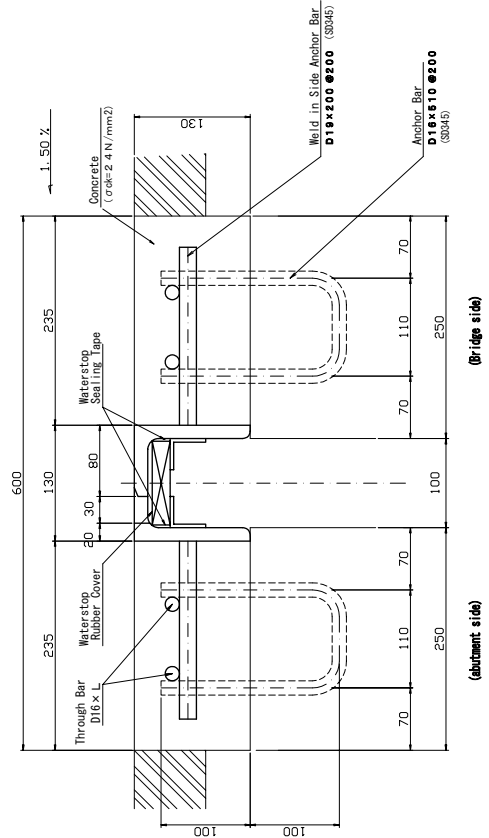
SCALE
S=1:150

Drawing No.
BAF-3

DETAILS OF EXPANSION JOINT SCALE 1:30



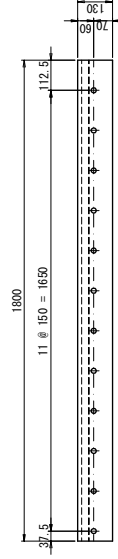
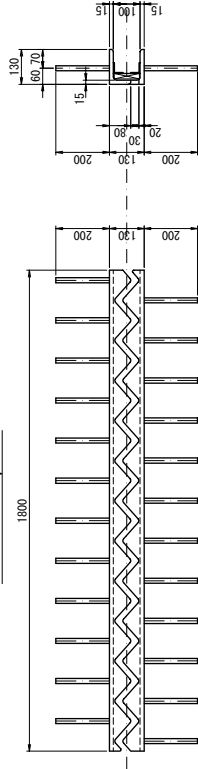
CROSS SECTION S=1/3



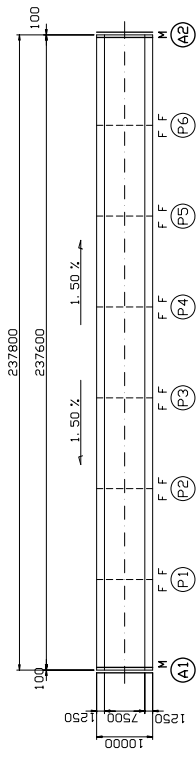
MATERIAL OF EXPANSION JOINT (1 set / 10m)				
No.	Material	Unit	Quantity	Remarks
1	RUBBER JOINT for CARRIAGEWAY	m	7.56	KMS II - 50
2	RUBBER JOINT for FOOTWAY	m	2.46	KMS II - 50
3	UPSTAND UNIT for CARRIAGEWAY	Set	2.00	
4	CONCRETE	$\sigma_{crack} = 2.4 N/mm^2$	0.61	
5	Through Bar for CARRIAGEWAY	kg	49.92	D18x4, Crack # Numbers
6	Through Bar for CARRIAGEWAY	kg	14.35	D18x1, 15m x 8 Numbers
7	Sealing	m	0.50	

8	Anchor Bar	kg	79.56	D18x510x100 Numbers
---	------------	----	-------	---------------------

PLAN S=1/10



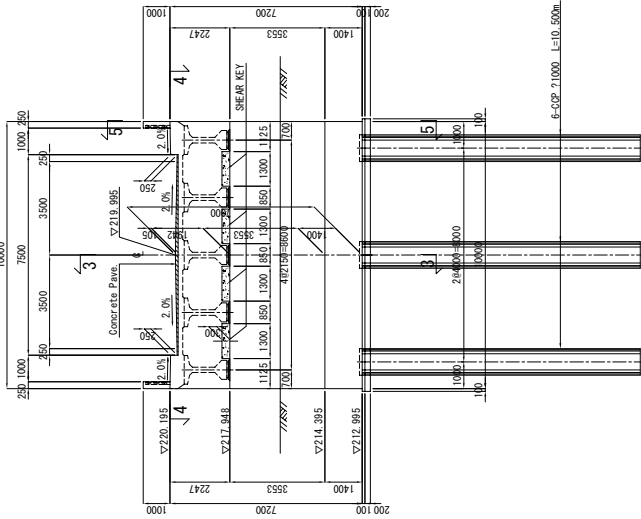
MARKING DIAGRAM



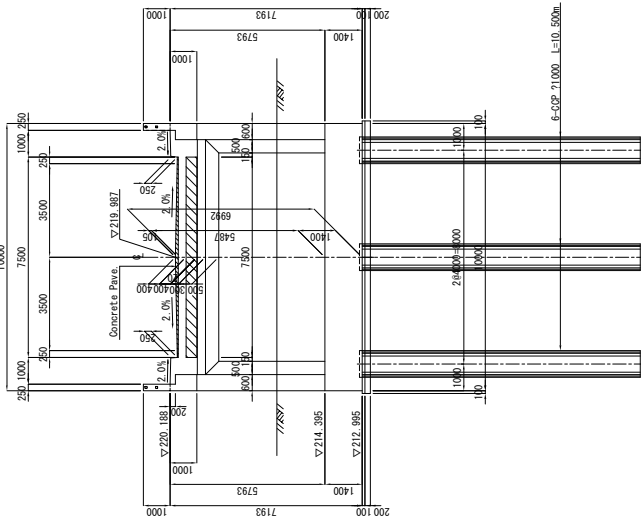
DIRECTEUR NATIONAL ADJOINT DES ROUTES REPUBLIQUE DU MALI	BASIC DESIGN STUDY ON THE PROJECT FOR BRIDGE CONSTRUCTION OF DAKAR-BAMAKO SOUTH CORRIDOR	JAPAN INTERNATIONAL COOPERATION AGENCY KATAHIRA & ENGINEERS INTERNATIONAL	TITLE : BAFFING BRIDGE DETAILS OF EXPANSION JOINT	SCALE S=1:30	Drawing No. BAF-5

STRUCTURE DRAWING OF A1 ABUTMENT SCALE 1:100

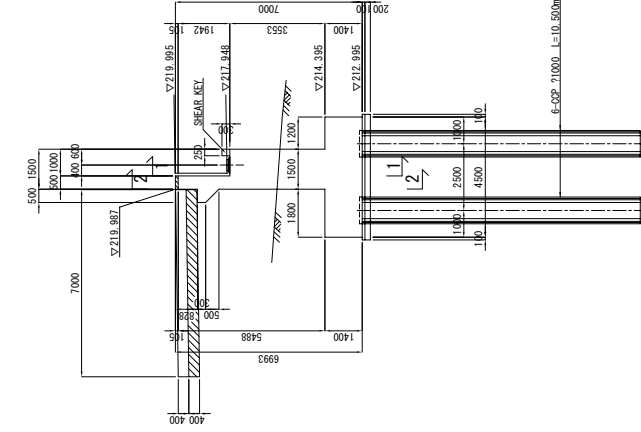
1 - 1



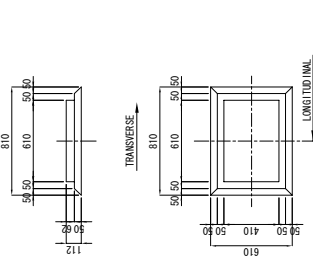
2 - 2



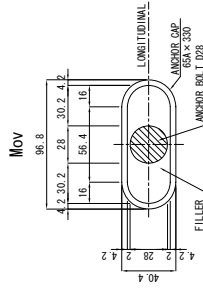
3 - 3



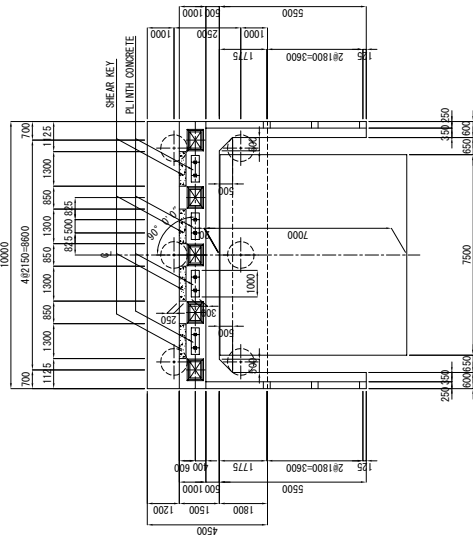
DETAILS SCALE 1:20



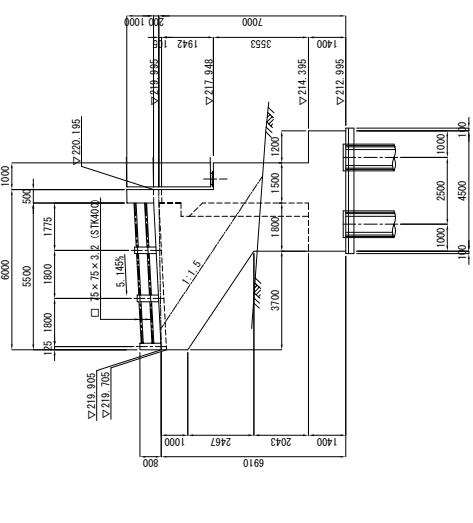
ANCHOR CAP SCALE 1:2



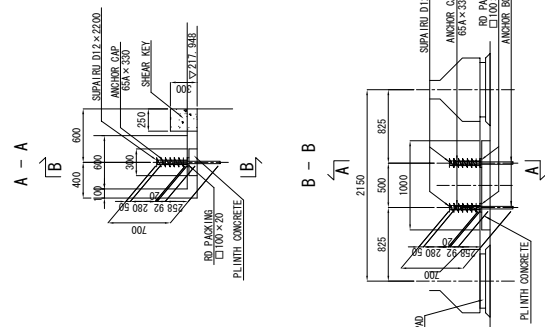
4 - 4



5 - 5



ANCHOR BOLT SCALE 1:30

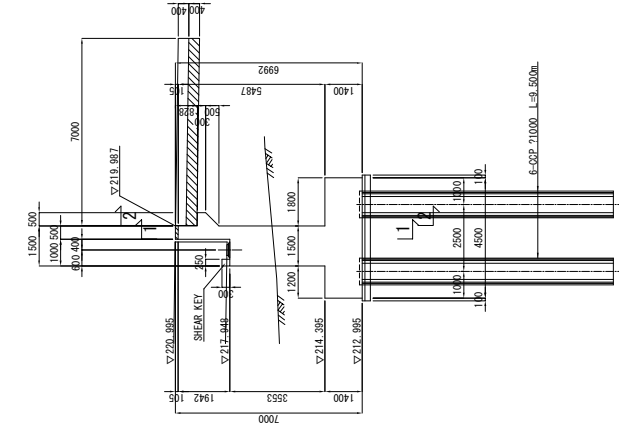


<p>DIRECTEUR NATIONAL ADJOINT DES ROUTES REPUBLIQUE DU MALI</p>	<p>BASIC DESIGN STUDY ON THE PROJECT FOR BRIDGE CONSTRUCTION OF DAKAR-BAMAKO SOUTH CORRIDOR</p>	<p>JAPAN INTERNATIONAL COOPERATION AGENCY KATAHIRA & ENGINEERS INTERNATIONAL</p>	<p>TITLE : BAFING BRIDGE STRUCTURE DRAWING OF A1 ABUTMENT</p>	<p>SCALE S=1:100</p>	<p>Drawing No. BAF-6</p>
---	---	--	---	--------------------------	------------------------------

STRUCTURE DRAWING OF A2 ABUTMENT SCALE 1:100

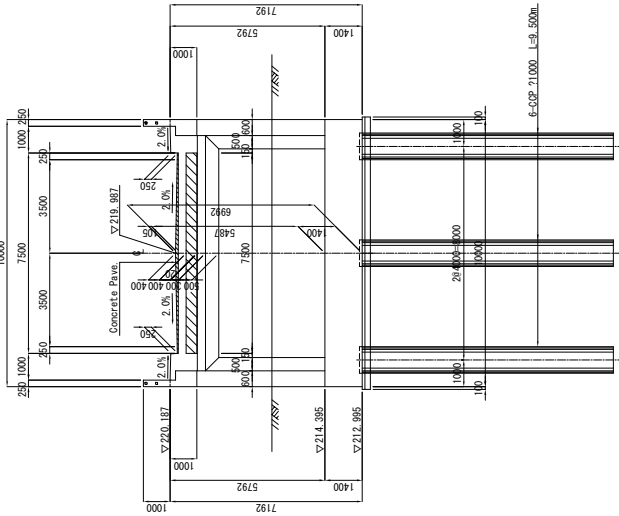
3 - 3

DETAILS SCALE 1:20



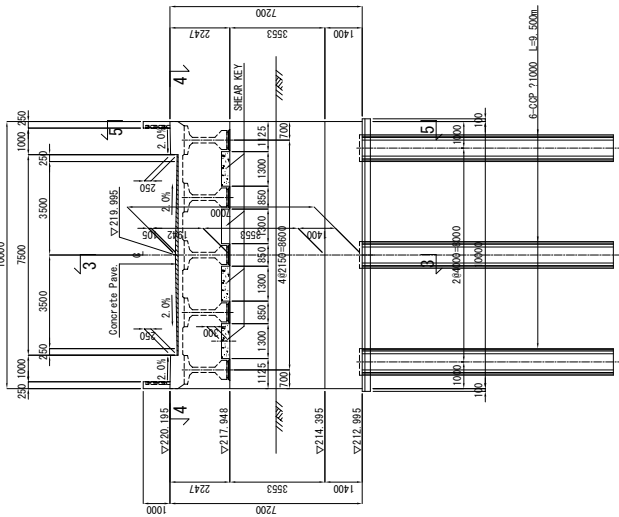
2 - 2

DETAILS SCALE 1:20



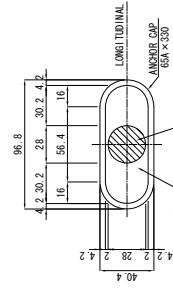
1 - 1

DETAILS SCALE 1:20



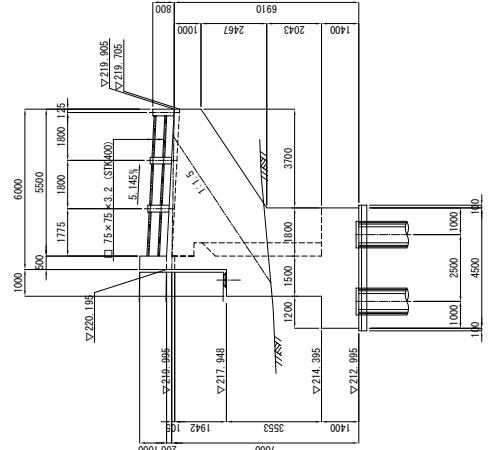
ANCHOR CAP SCALE 1:2

Mov



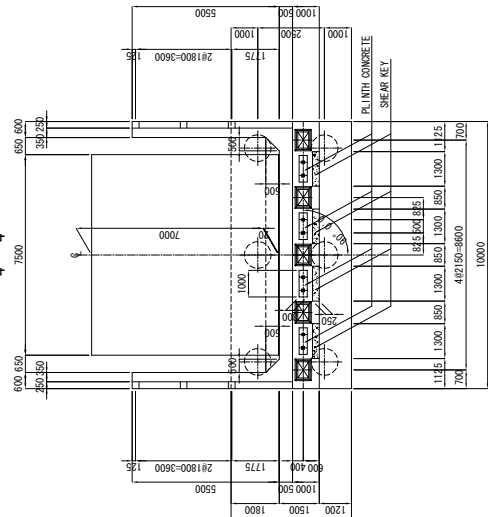
5 - 5

DETAILS SCALE 1:30



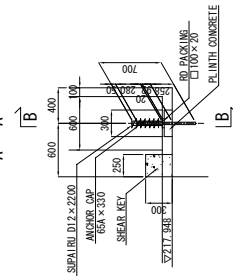
4 - 4

DETAILS SCALE 1:30

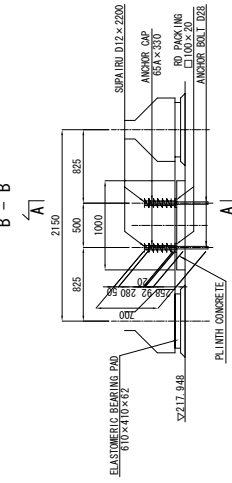


ANCHOR BOLT SCALE 1:30

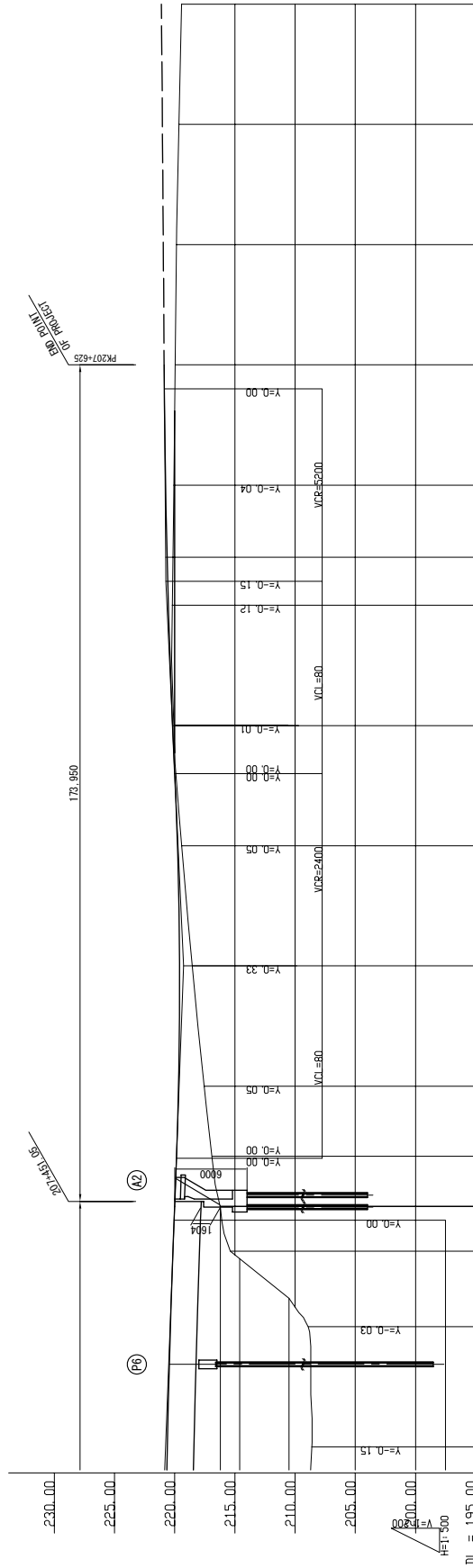
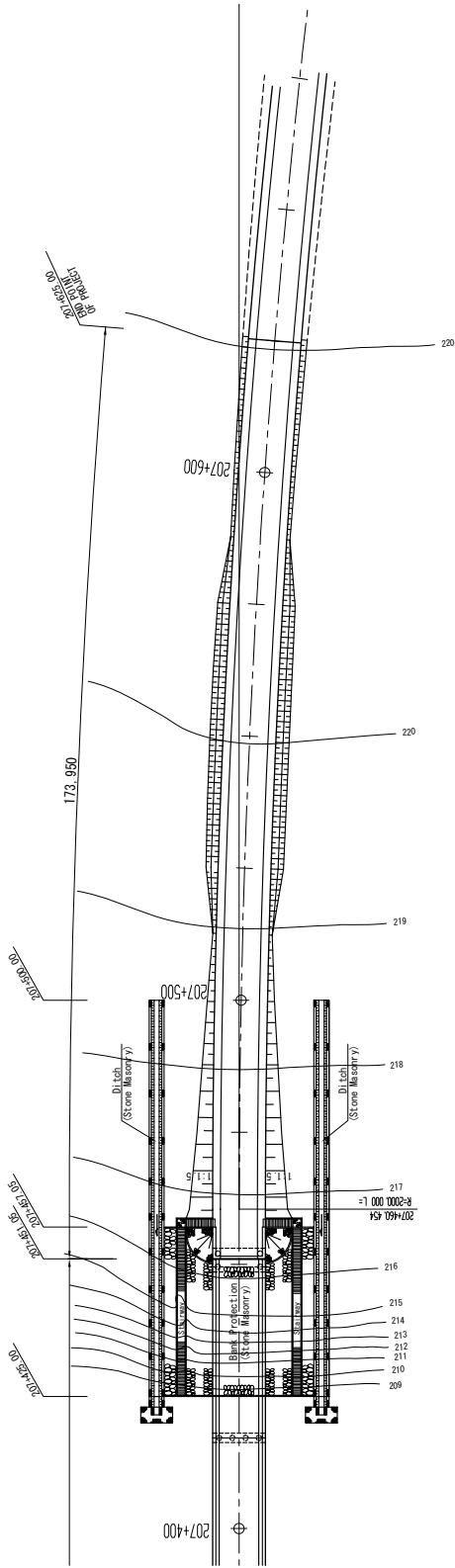
A - A



B - B



<p>DIRECTEUR NATIONAL ADJOINT DES ROUTES REPUBLIQUE DU MALI</p>	<p>BASIC DESIGN STUDY ON THE PROJECT FOR BRIDGE CONSTRUCTION OF DAKAR-BAMAKO SOUTH CORRIDOR</p>	<p>JAPAN INTERNATIONAL COOPERATION AGENCY KATAHIRA & ENGINEERS INTERNATIONAL</p>	<p>TITLE : BAFFING BRIDGE STRUCTURE DRAWING OF A2 ABUTMENT</p>	<p>SCALE S=1:100</p>	<p>Drawing No. BAF-7</p>
---	---	--	--	--------------------------	------------------------------



Station	Profile Elevation	Plan Elevation
207+400	208.62	220.615
207+425	208.92	220.353
207+450	216.23	220.010
207+475	217.55	219.682
207+500	218.53	219.595
207+525	219.43	219.769
207+550	220.08	220.173
207+575	220.20	220.526
207+600	220.17	220.582
207+625	219.96	220.872
207+650	219.65	221.022
207+675	219.841	221.841
207+700	221.841	221.841

DIRECTEUR NATIONAL ADJOINT DES ROUTES
REPUBLIQUE DU MALI

BASIC DESIGN STUDY
ON THE PROJECT FOR BRIDGE
CONSTRUCTION OF
DAKAR-BAMAKO SOUTH CORRIDOR

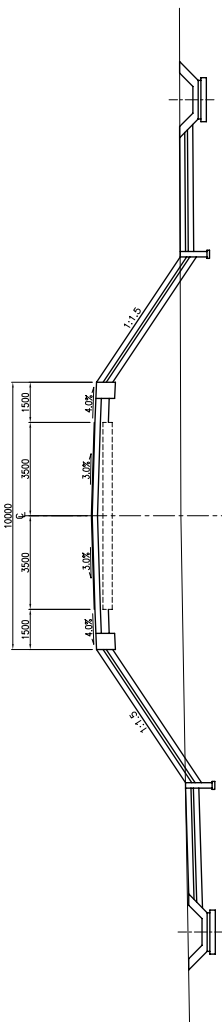
JAPAN INTERNATIONAL COOPERATION AGENCY
KATAHIRA & ENGINEERS INTERNATIONAL

TITLE : BAFING BRIDGE
PLAN AND PROFILE (2)

SCALE
HF:1:500
V:1:200

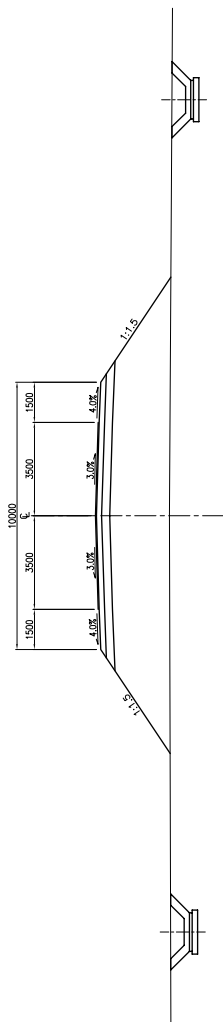
Drawing No.
BAF-11

PK. 207+207.25
FH=218.58
GH=218.58



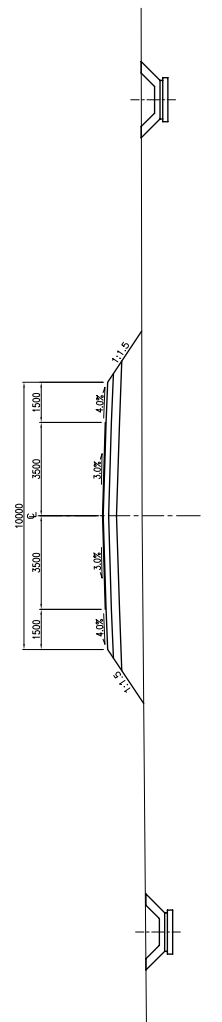
DL=212.00

PK. 207+200
FH=218.939
GH=217.10



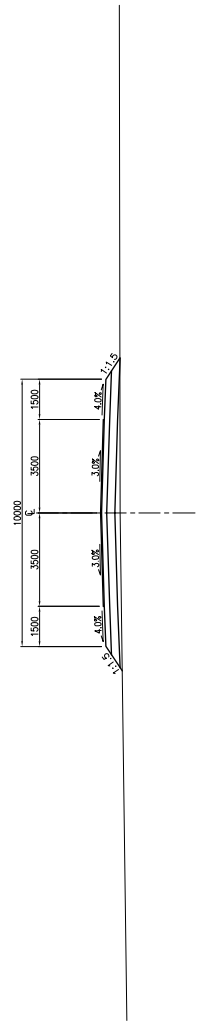
DL=213.00

PK. 207+175
FH=218.633
GH=218.18



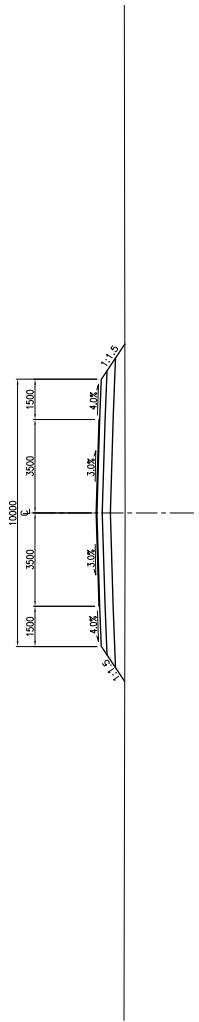
DL=214.00

PK. 207+150
FH=218.582
GH=218.807



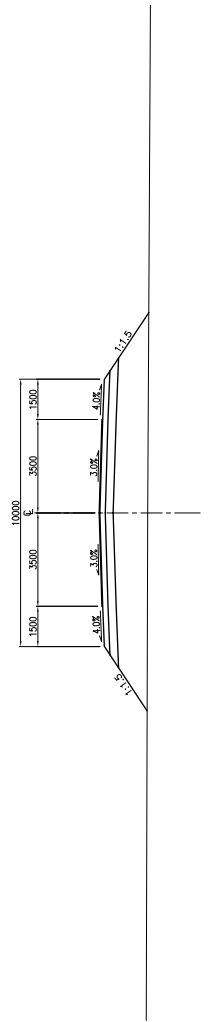
DL=214.00

PK. 207+125
FH=218.519
GH=218.57



DL=214.00

PK. 207+100
FH=218.759
GH=217.97

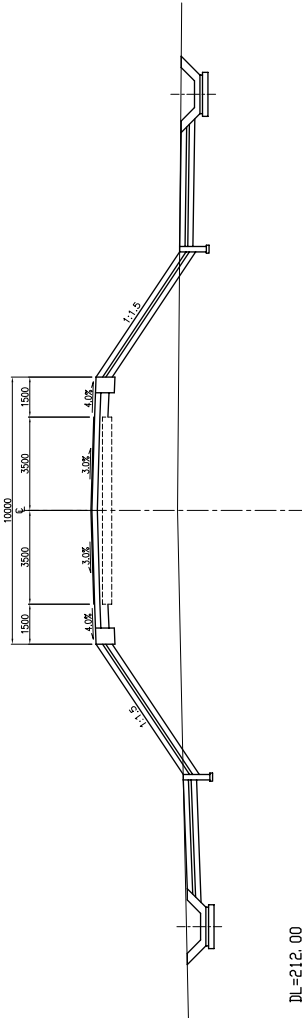


DL=214.00

BEGINNING POINT OF PROJECT

DIRECTEUR NATIONAL ADJOINT DES ROUTES REPUBLIQUE DU MALI	BASIC DESIGN STUDY ON THE PROJECT FOR BRIDGE CONSTRUCTION OF DAKAR-BAMAKO SOUTH CORRIDOR	JAPAN INTERNATIONAL COOPERATION AGENCY KATAHIRA & ENGINEERS INTERNATIONAL	TITLE : BAFING BRIDGE CROSS SECTIONS OF ROAD (1)	SCALE	Drawing No.
				1:100	BAF-13

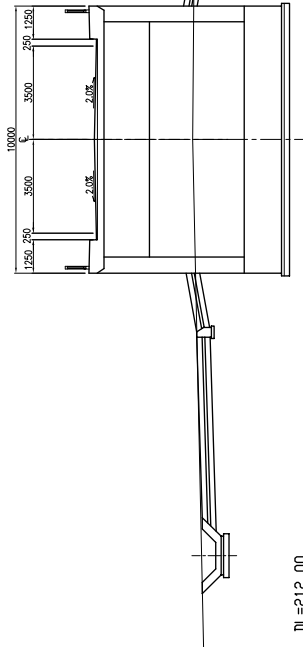
PK. 207+457. 05
 FH=212.995
 GH=212.724



DL=212.00

PK. 207+451. 05
 FH=212.824
 GH=212.324

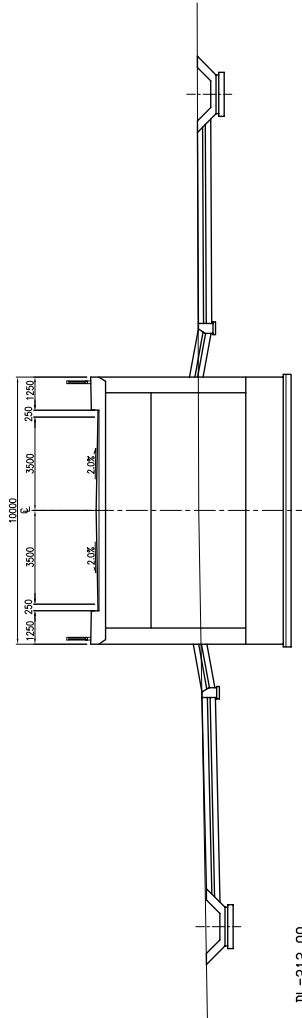
END OF BRIDGE



DL=212.00

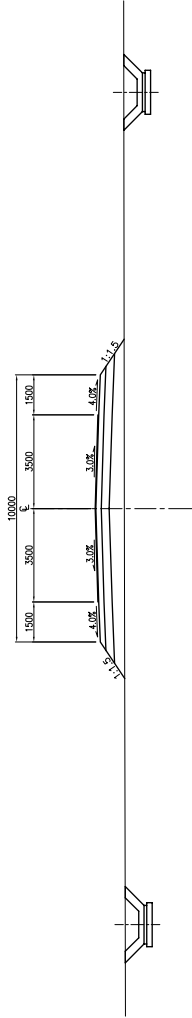
PK. 207+213. 25
 FH=212.995
 GH=212.15

BEGINING OF BRIDGE



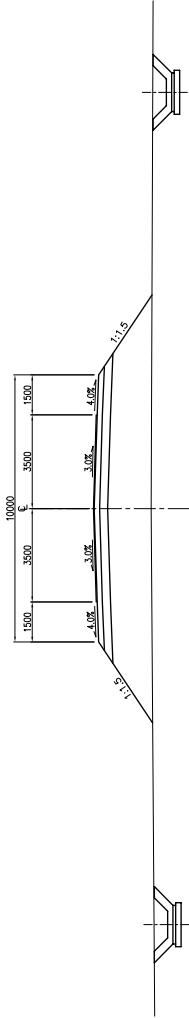
DL=212.00

PK. 207+500
 FH=212.995
 GH=212.33



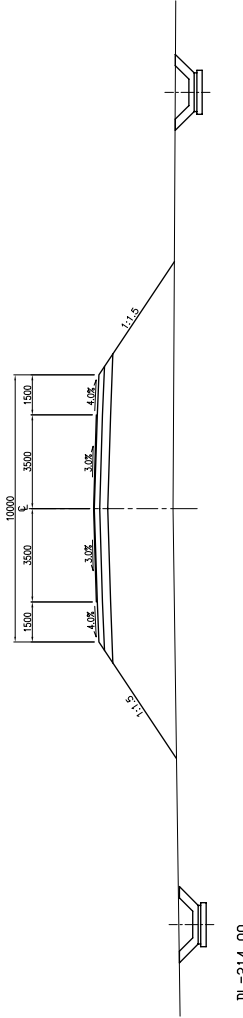
DL=214.00

PK. 207+475
 FH=212.662
 GH=217.55



DL=214.00

PK. 207+460. 454(BC)
 FH=212.863
 GH=212.91



DL=214.00

DIRECTEUR NATIONAL ADJOINT DES ROUTES
 REPUBLIQUE DU MALI

BASIC DESIGN STUDY
 ON THE PROJECT FOR BRIDGE
 CONSTRUCTION OF
 DAKAR-BAMAKO SOUTH CORRIDOR

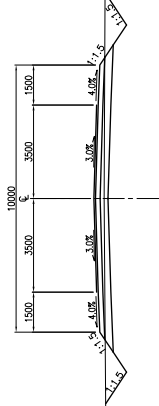
JAPAN INTERNATIONAL COOPERATION AGENCY
 KATAHIRA & ENGINEERS INTERNATIONAL

TITLE : BAFING BRIDGE
 CROSS SECTIONS OF ROAD (2)

SCALE
 1:100

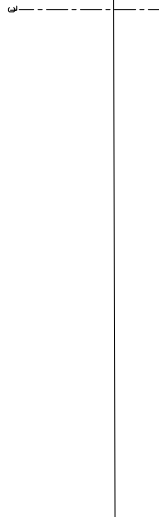
Drawing No.
 BAF-14

PK. 207+575
 FH=220.326
 GH=220.20



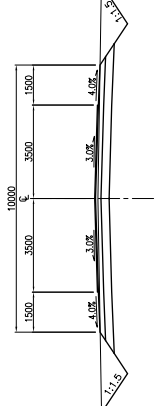
DL=216.00

PK. 207+650
 FH=220.247
 GH=219.85



DL=216.00

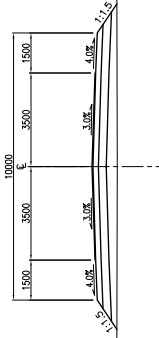
PK. 207+550
 FH=220.173
 GH=220.08



DL=216.00

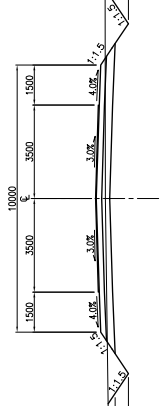
PK. 207+625
 FH=220.872
 GH=219.82

END POINT OF PROJECT



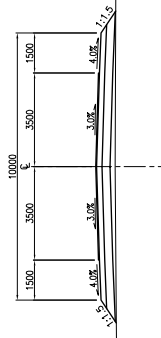
DL=216.00

PK. 207+525
 FH=219.759
 GH=219.43



DL=215.00

PK. 207+600
 FH=220.739
 GH=220.07



DL=216.00

DIRECTEUR NATIONAL ADJOINT DES ROUTES
 REPUBLIQUE DU MALI

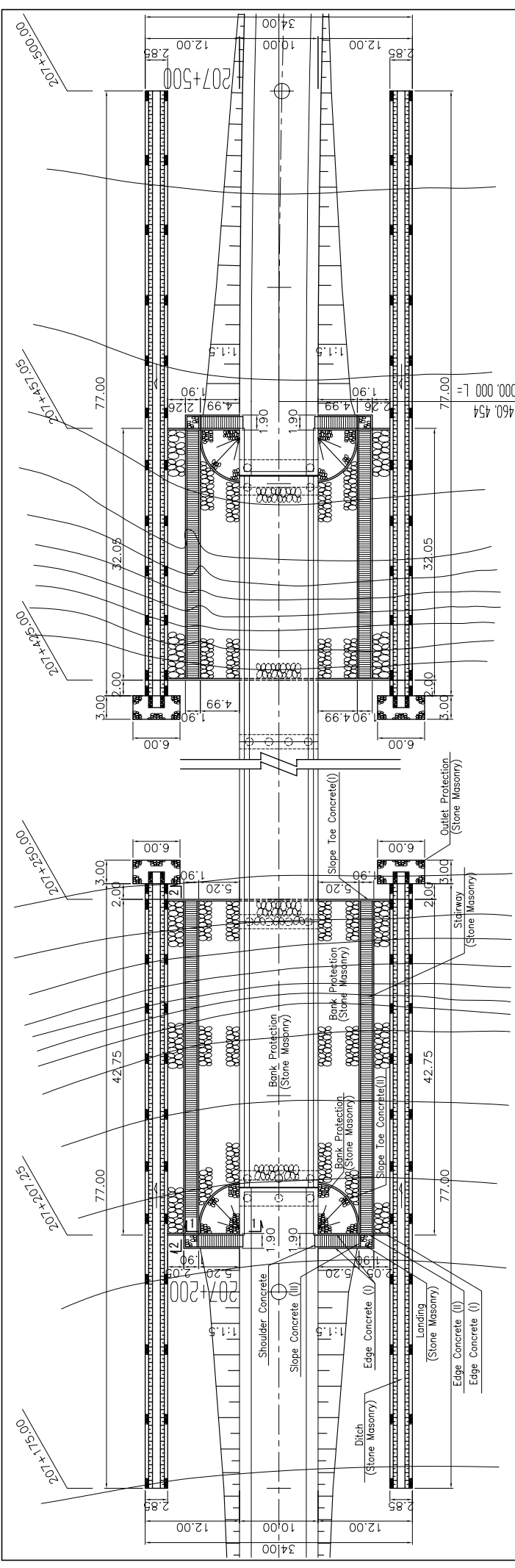
BASIC DESIGN STUDY
 ON THE PROJECT FOR BRIDGE
 CONSTRUCTION OF
 DAKAR-BAMAKO SOUTH CORRIDOR

JAPAN INTERNATIONAL COOPERATION AGENCY
 KATAHIRA & ENGINEERS INTERNATIONAL

TITLE : BAFING BRIDGE
 CROSS SECTIONS OF ROAD (3)

SCALE
 1:100

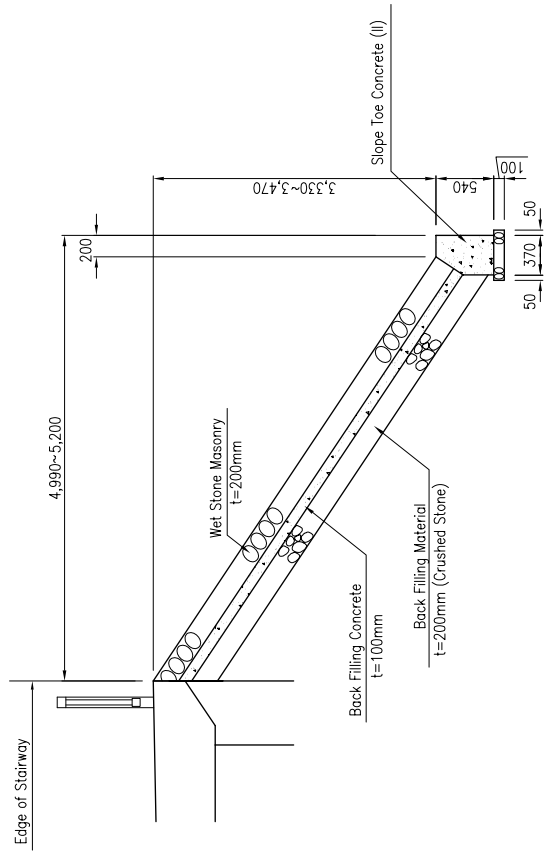
Drawing No.
 BAF-15



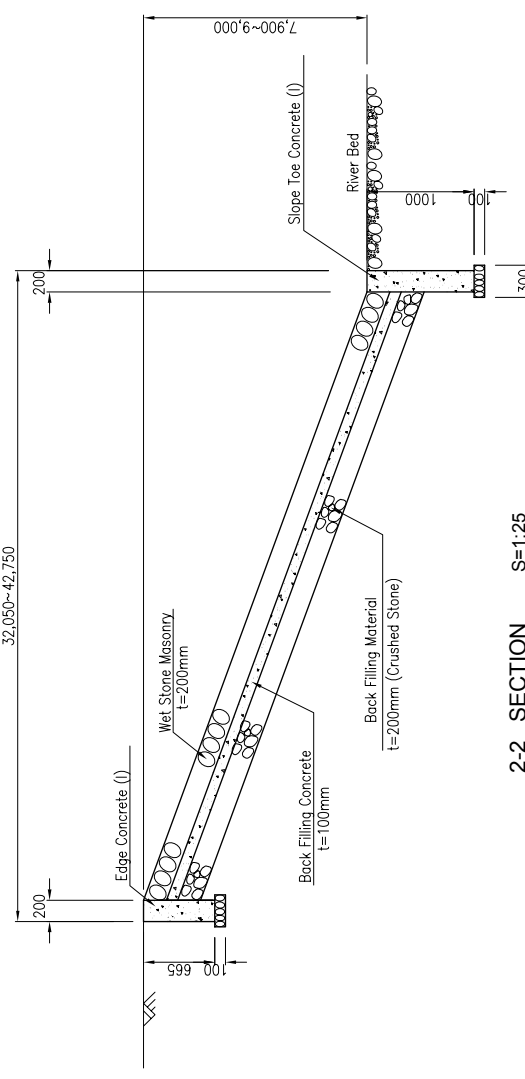
Abutment A1 Side

Abutment A2 Side

PLAN S=1:250

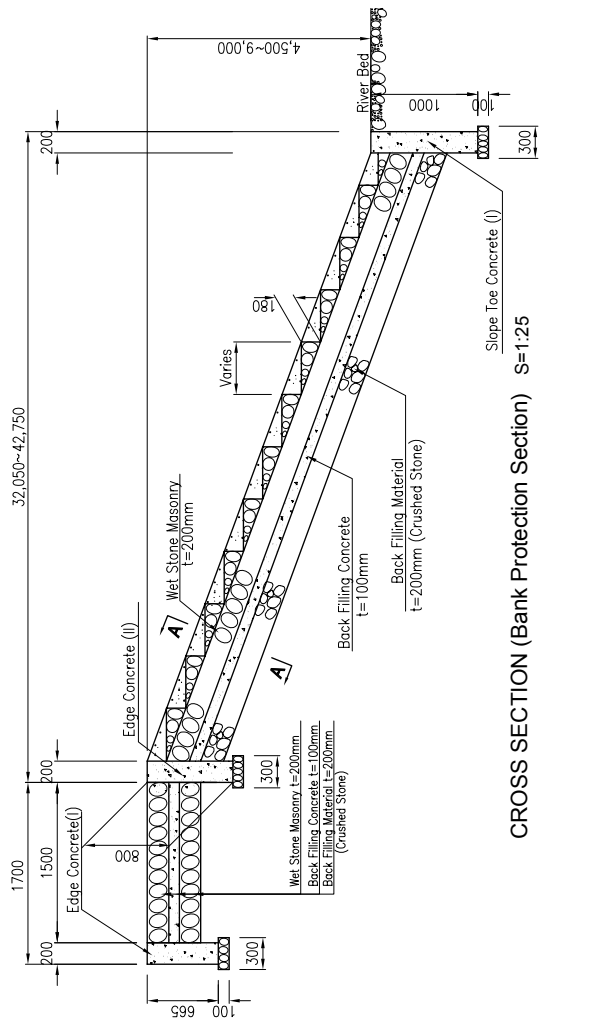


1-1 SECTION S=1:25

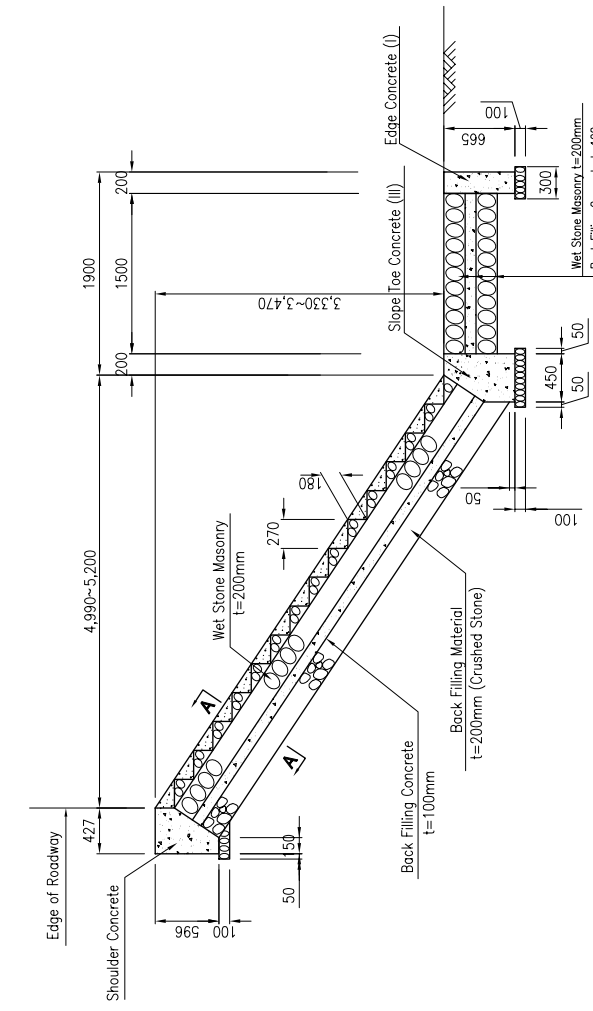


2-2 SECTION S=1:25

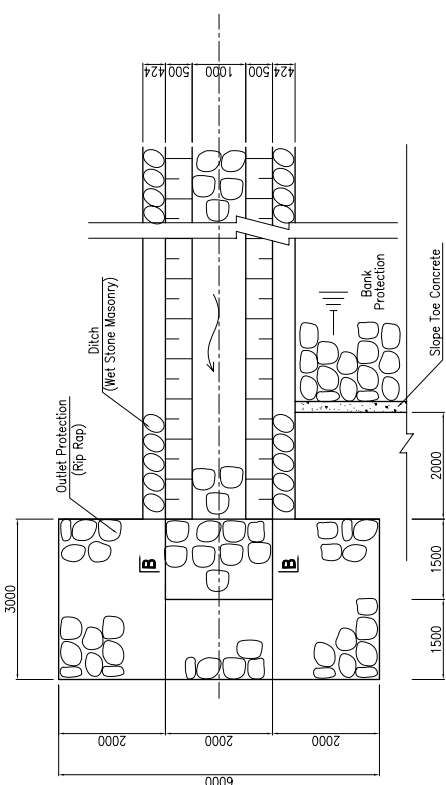
DIRECTEUR NATIONAL ADJOINT DES ROUTES REPUBLIQUE DU MALI	BASIC DESIGN STUDY ON THE PROJECT FOR BRIDGE CONSTRUCTION OF DAKAR-BAMAKO SOUTH CORRIDOR	JAPAN INTERNATIONAL COOPERATION AGENCY KATAHIRA & ENGINEERS INTERNATIONAL	TITLE : BAFING BRIDGE DETAIL OF BANK PROTECTION	SCALE As Mentioned	Drawing No. BAF-16
---	---	--	--	-----------------------	-----------------------



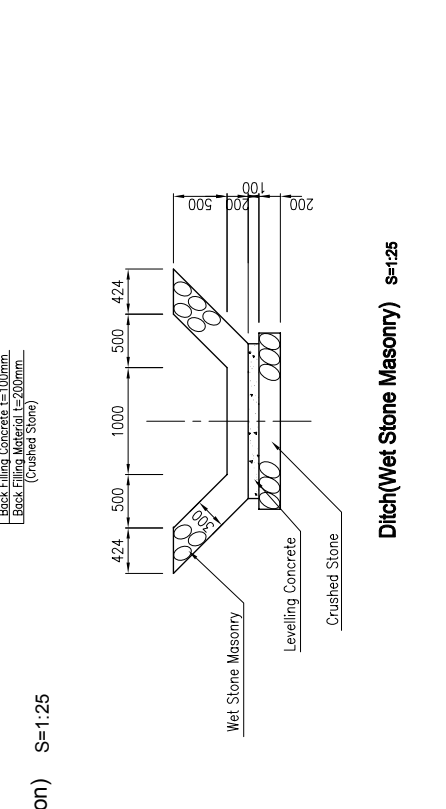
CROSS SECTION (Bank Protection Section) S=1:25



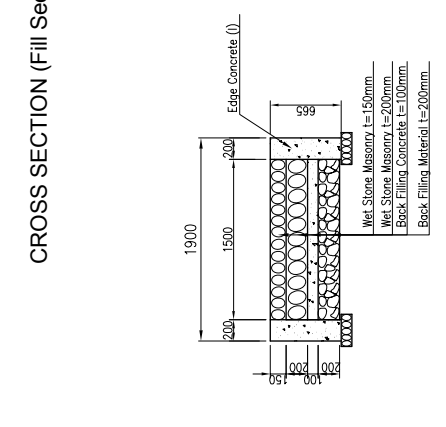
CROSS SECTION (Fill Section) S=1:25



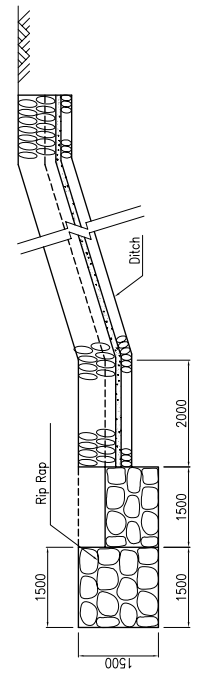
PLAN OF DITCH AND OUTLET PROTECTION S=1:50



SECTION B - B S=1:25



SECTION A - A S=1:25



SIDE VIEW OF DITCH AND OUTLET PROTECTION S=1:50

DIRECTEUR NATIONAL ADJOINT DES ROUTES REPUBLIQUE DU MALI	BASIC DESIGN STUDY ON THE PROJECT FOR BRIDGE CONSTRUCTION OF DAKAR-BAMAKO SOUTH CORRIDOR	JAPAN INTERNATIONAL COOPERATION AGENCY KATAHIRA & ENGINEERS INTERNATIONAL	TITLE : BAFING BRIDGE DETAIL OF STAIRWAY AND DITCH	SCALE As Mentioned	Drawing No.
					BAF-17

